

Figure 3.1.71 Time Series of Salinity and Water Temperature (P20, Spring Tide, Dry Season, from 11 to 12 Dec. 2000)

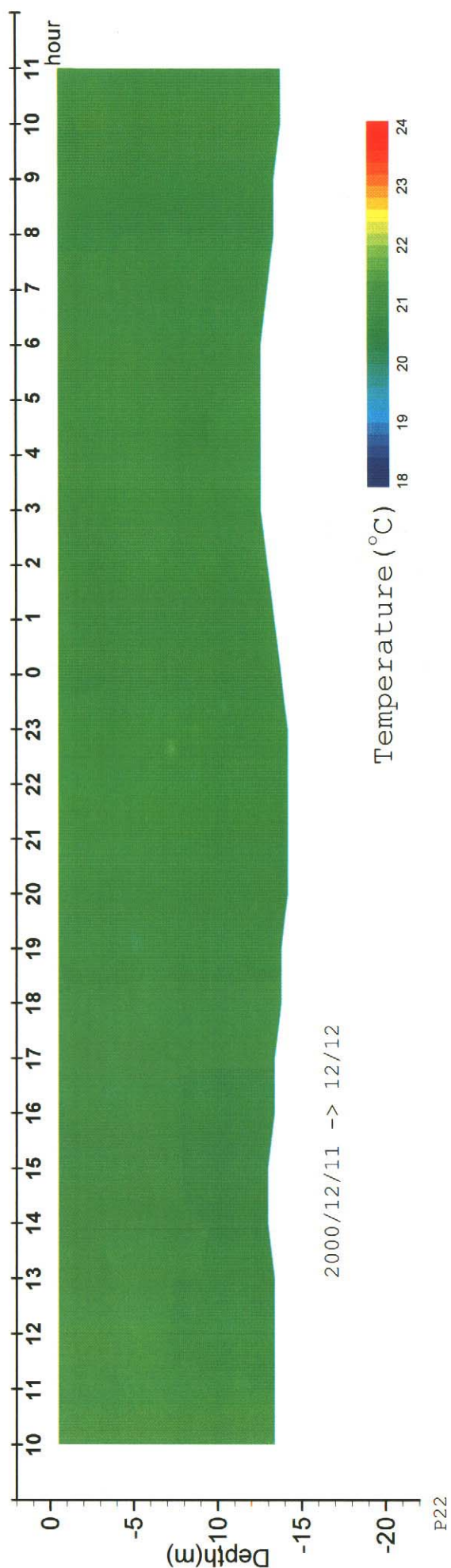
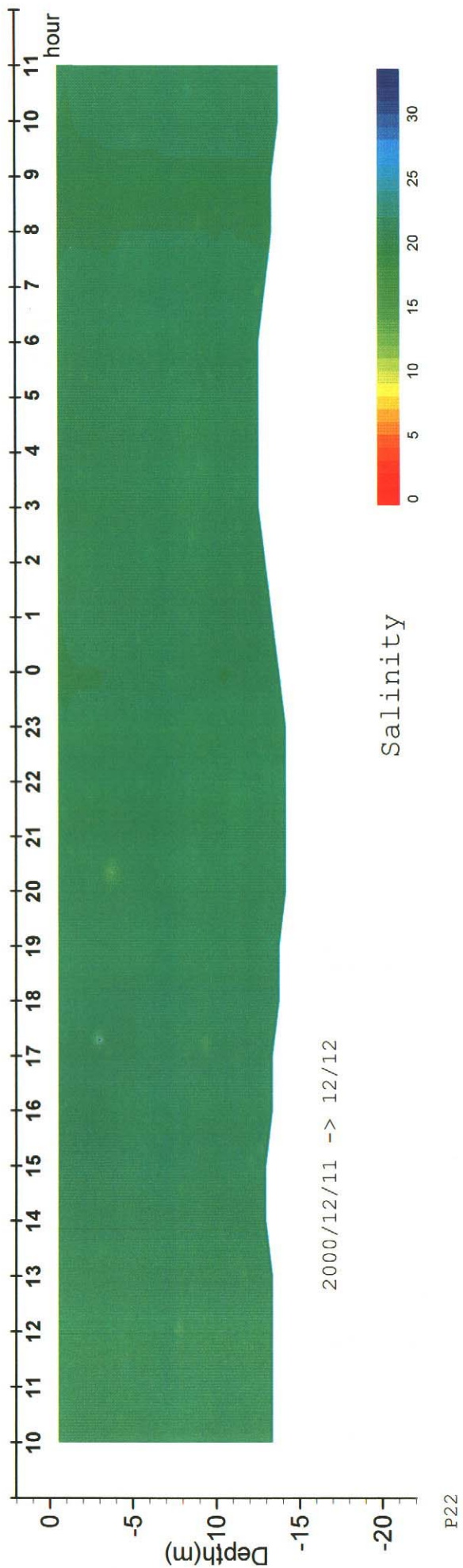


Figure 3.1.72 Time Series of Salinity and Water Temperature (P22, Spring Tide, Dry Season, from 11 to 12 Dec. 2000)

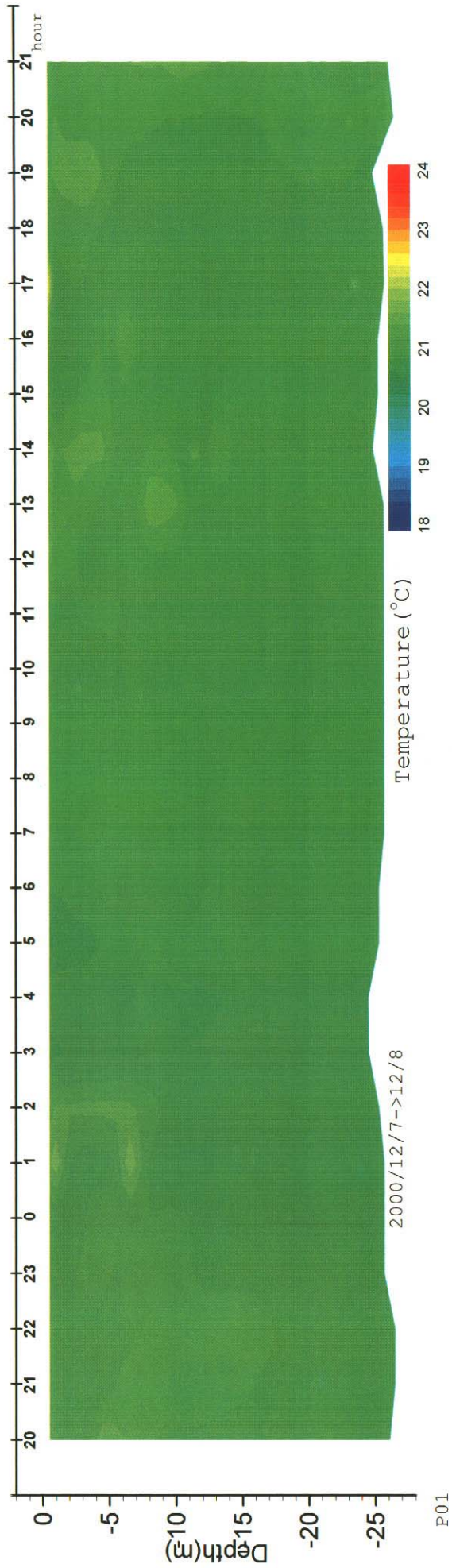
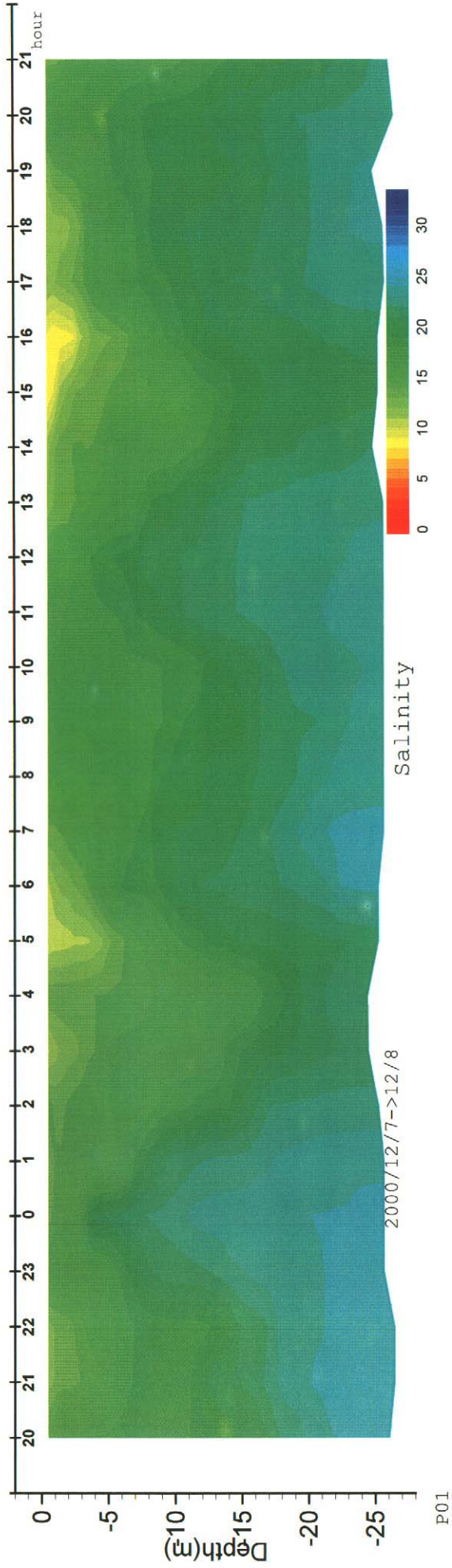


Figure 3.1.73 Time Series of Salinity and Water Temperature  
(P01, Neap Tide, Dry Season, from 7 & 8 Dec. 2000)

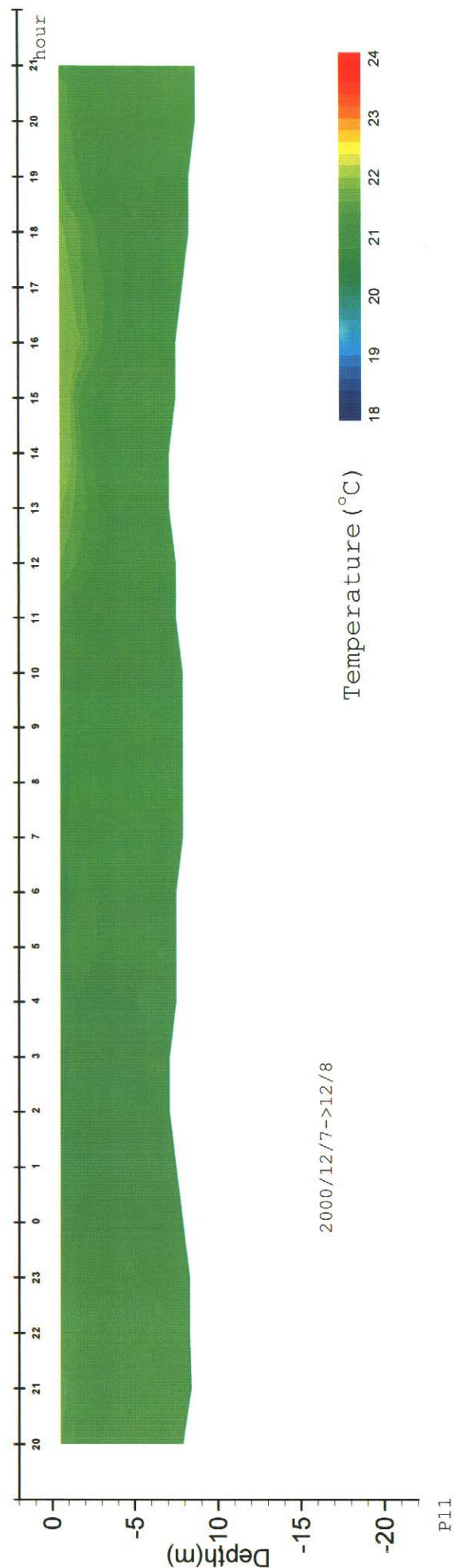
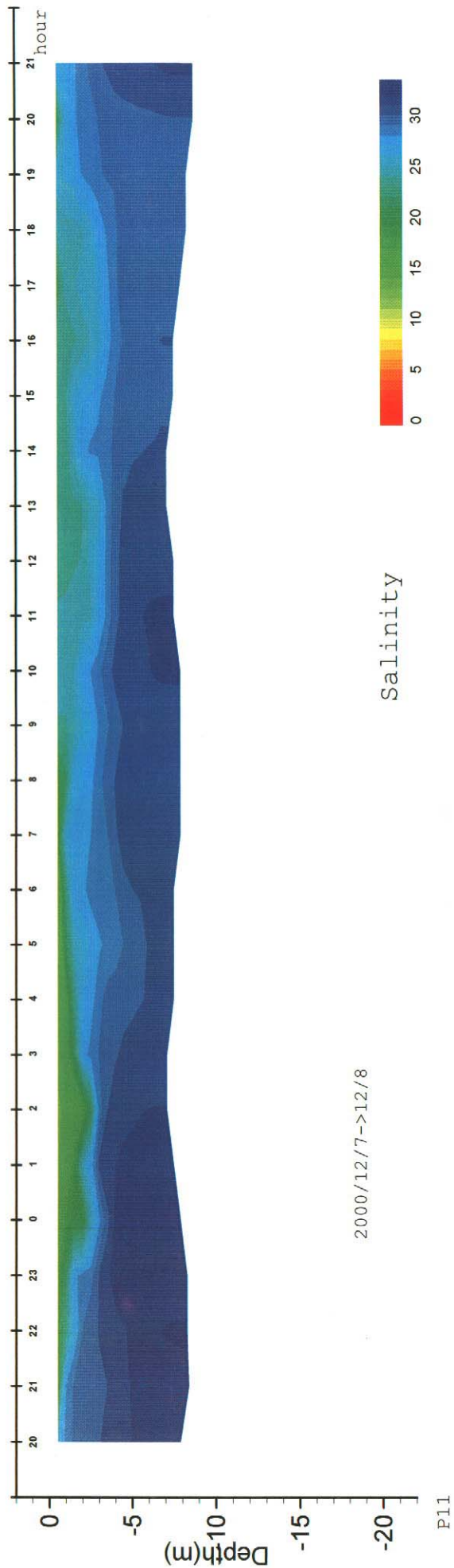


Figure 3.1.74 Time Series of Salinity and Water Temperature (P11, Neap Tide, Dry Season, from 7 to 8 Dec. 2000)

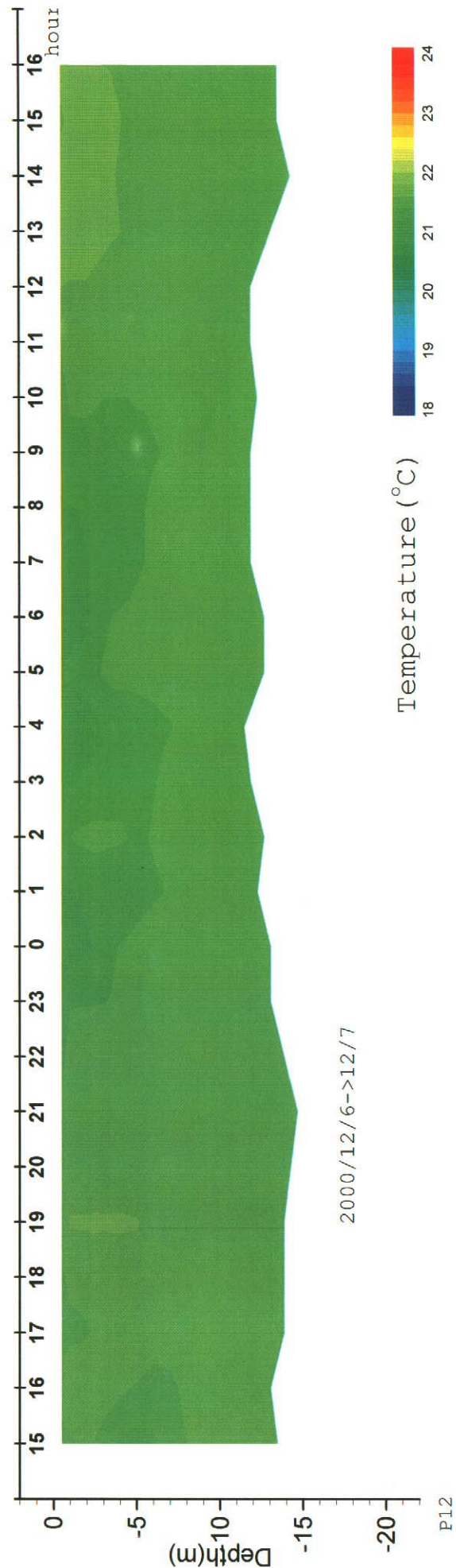
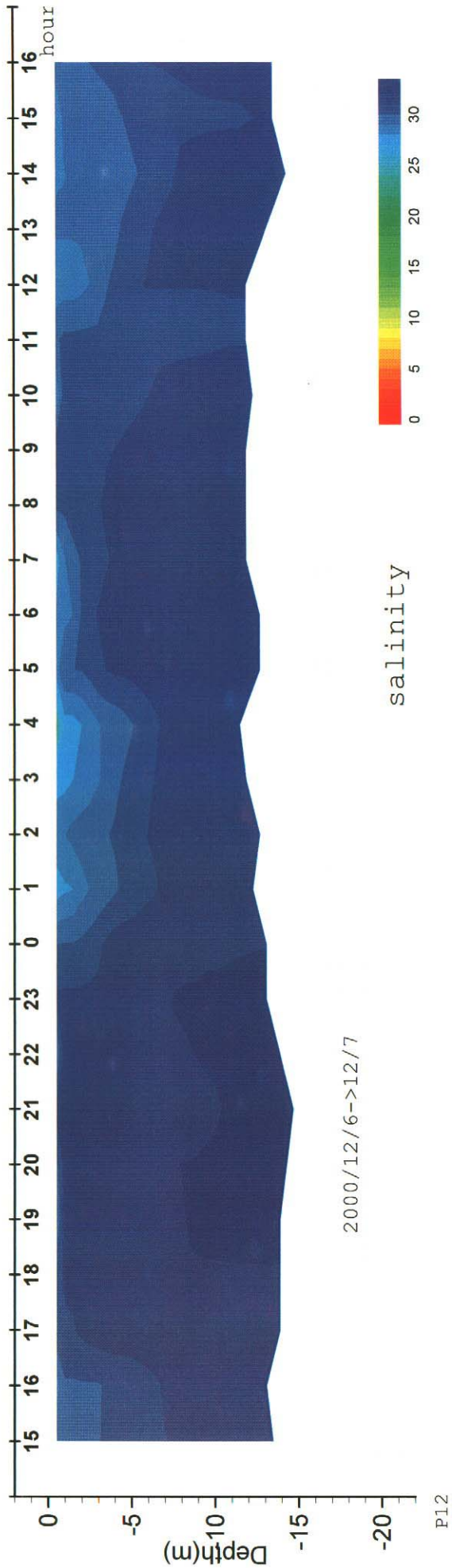


Figure 3.1.75 Time Series of Salinity and Water Temperature (P12, Neap Tide, Dry Season, from 6 to 7 Dec. 2000)

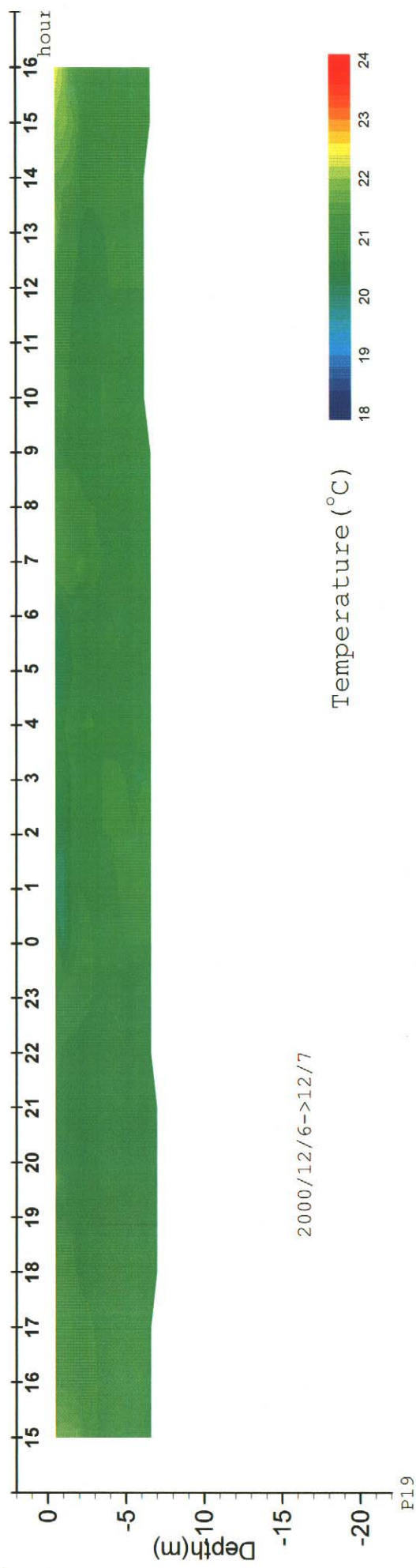
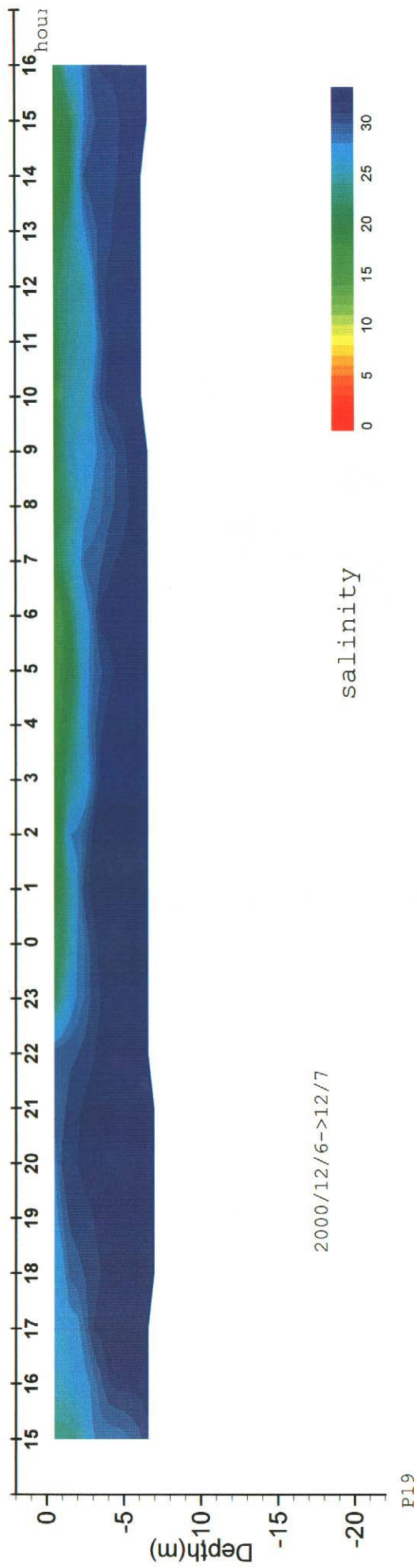


Figure 3.1.76 Time Series of Salinity and Water Temperature (P19, Neap Tide, Dry Season, from 6 to 7 Dec. 2000)

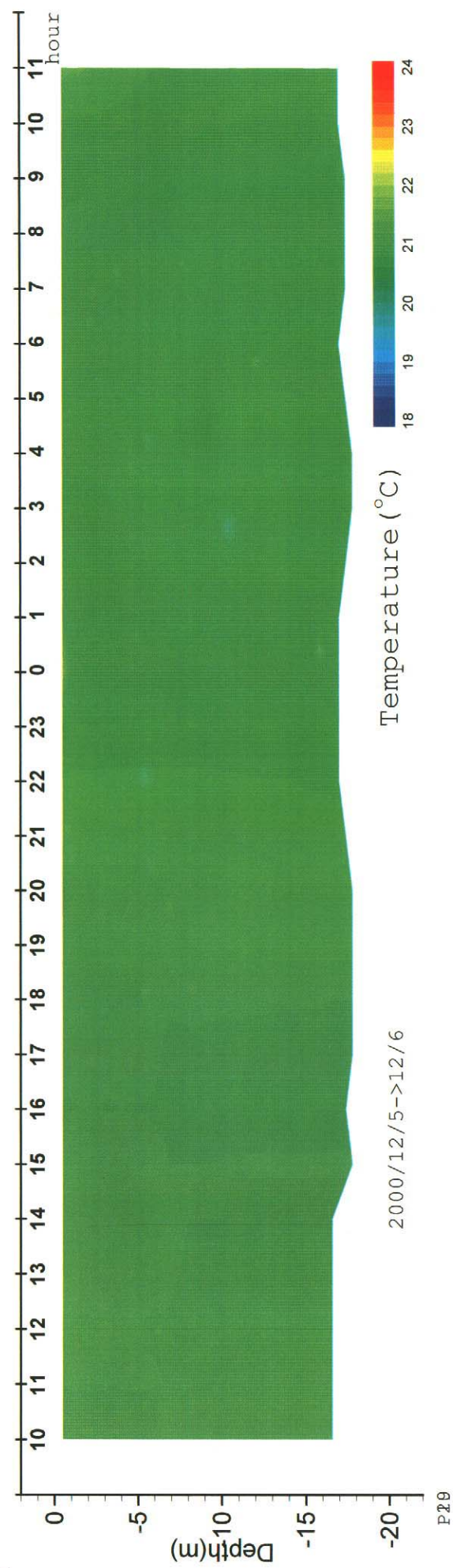
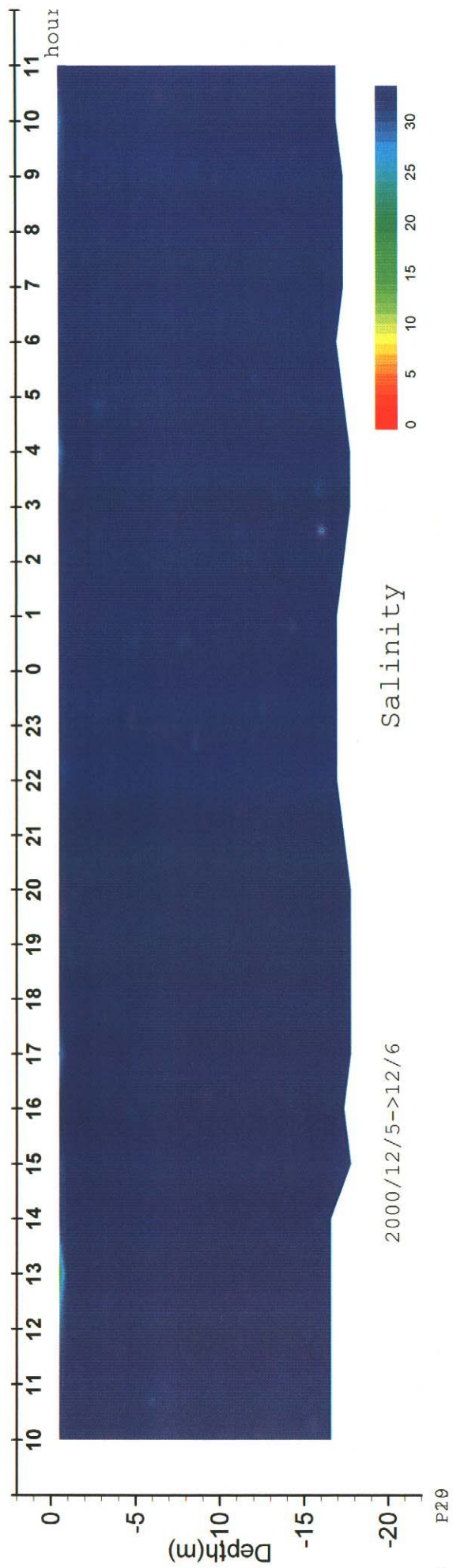


Figure 3.1.77 Time Series of Salinity and Water Temperature (P29, Neap Tide, Dry Season, from 5 to 6 Dec. 2000)

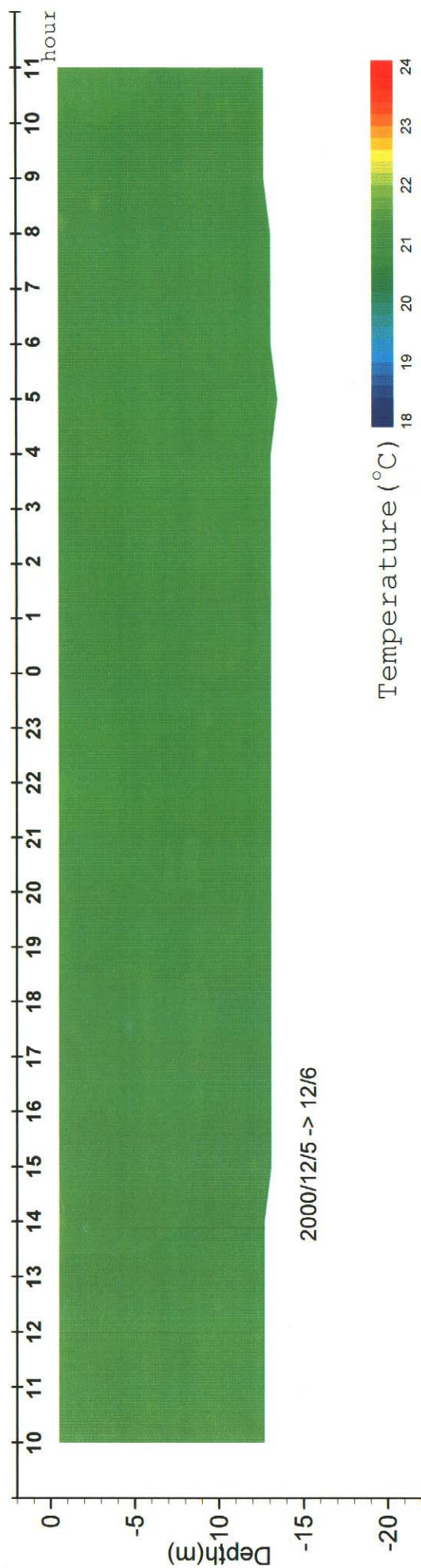
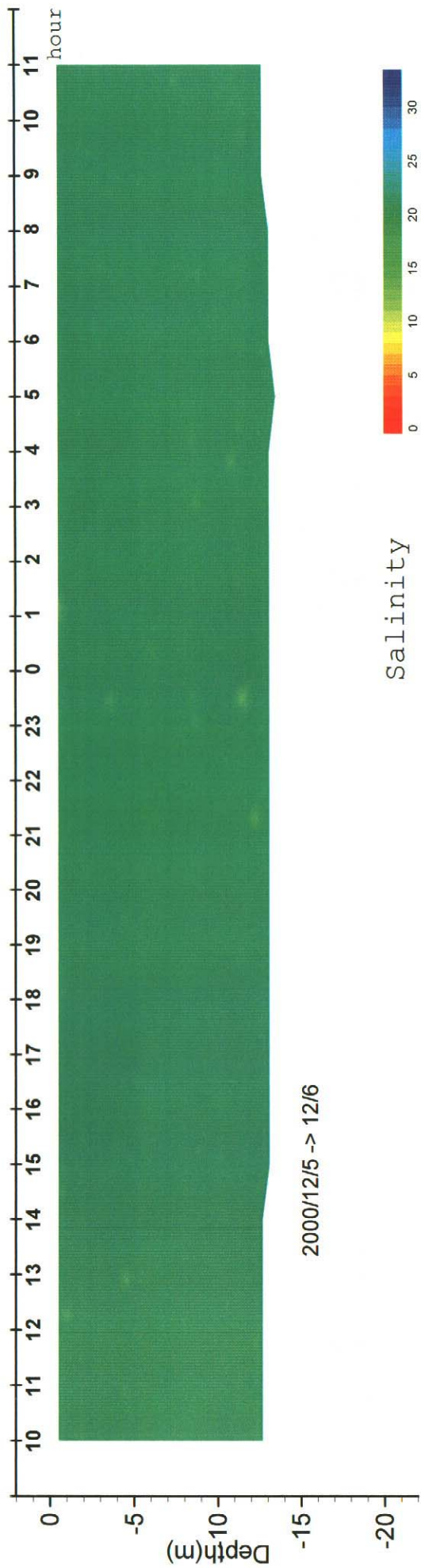


Figure 3.1.78 Time Series of Salinity and Water Temperature (P22, Neap Tide, Dry Season, from 5 to 6 Dec. 2000)