

**BASIC DESIGN STUDY REPORT
ON
THE PROJECT FOR CONSTRUCTION OF BRIDGES
ALONG RURAL ROADS IN NORTHERN LUZON
IN
THE REPUBLIC OF THE PHILIPPINES**

OCTOBER 2001

**JAPAN INTERNATIONAL COOPERATION AGENCY
KATAHIRA & ENGINEERS INTERNATIONAL**

| |
|--------------|
| G R 3 |
|--------------|

| |
|---------------|
| CR (2) |
|---------------|

| |
|---------------|
| 01-161 |
|---------------|

PREFACE

In response to a request from the Government of the Republic of the Philippines, the Government of Japan decided to conduct a basic design study on the Project for Construction of Bridges along Rural Roads in Northern Luzon and entrusted the study to the Japan International Cooperation Agency (JICA).

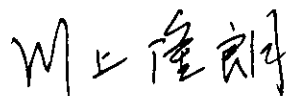
JICA sent to the Philippines a study team twice from February 11 to March 27, 2001 and from April 23 to June 6, 2001.

The team held discussions with the officials concerned of the Government of the Philippines, and conducted field studies at the study area. After the team returned to Japan, further studies were made. Then, a mission was sent to the Philippines from August 22 to 31, 2001 in order to discuss a draft basic design, and as this result, the present report was finalized.

I hope that this report will contribute to the promotion of the project and to the enhancement of friendly relations between our two countries.

I wish to express my sincere appreciation to the officials concerned of the Government of the Republic of the Philippines for their close cooperation extended to the teams.

October, 2001



Takao Kawakami
President

Japan International Cooperation Agency

October, 2001

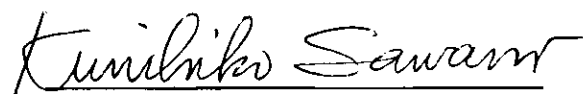
Letter of Transmittal

We are pleased to submit to you the basic design study report on the Project for Construction of Bridges along Rural Roads in Northern Luzon in the Republic of the Philippines.

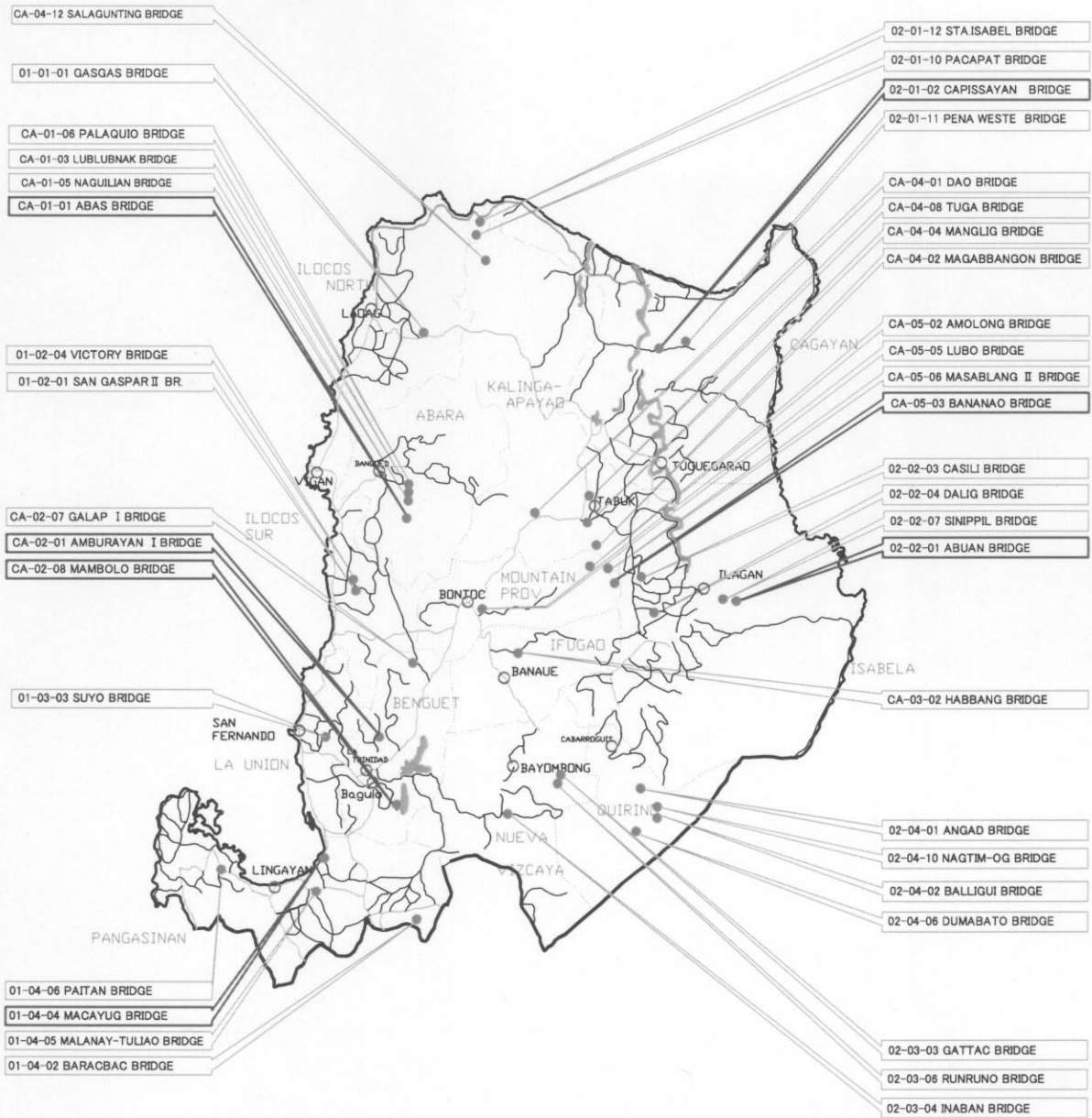
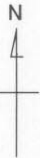
This study was conducted by Katahira & Engineers International, under a contract to JICA, during the period from February, 2001 to October, 2001. In conducting the study, we have examined the feasibility and rationale of the project with due consideration to the present situation of the Philippines and formulated the most appropriate basic design for the project under Japan's grant aid scheme.

Finally, we hope that this report will contribute to further promotion of the project.

Very truly yours,



Kunihiko Sawano
Project Manager,
Basic design study team on the Project
for Construction of Bridges along
Rural Roads in Northern Luzon
Katahira & Engineers International



LEGEND

- : GROUP 1
- : GROUP 2

BRIDGE No 01: REGION I
 02: REGION II
 CA: CAR



LOCATION MAP OF PROJECT BRIDGES

