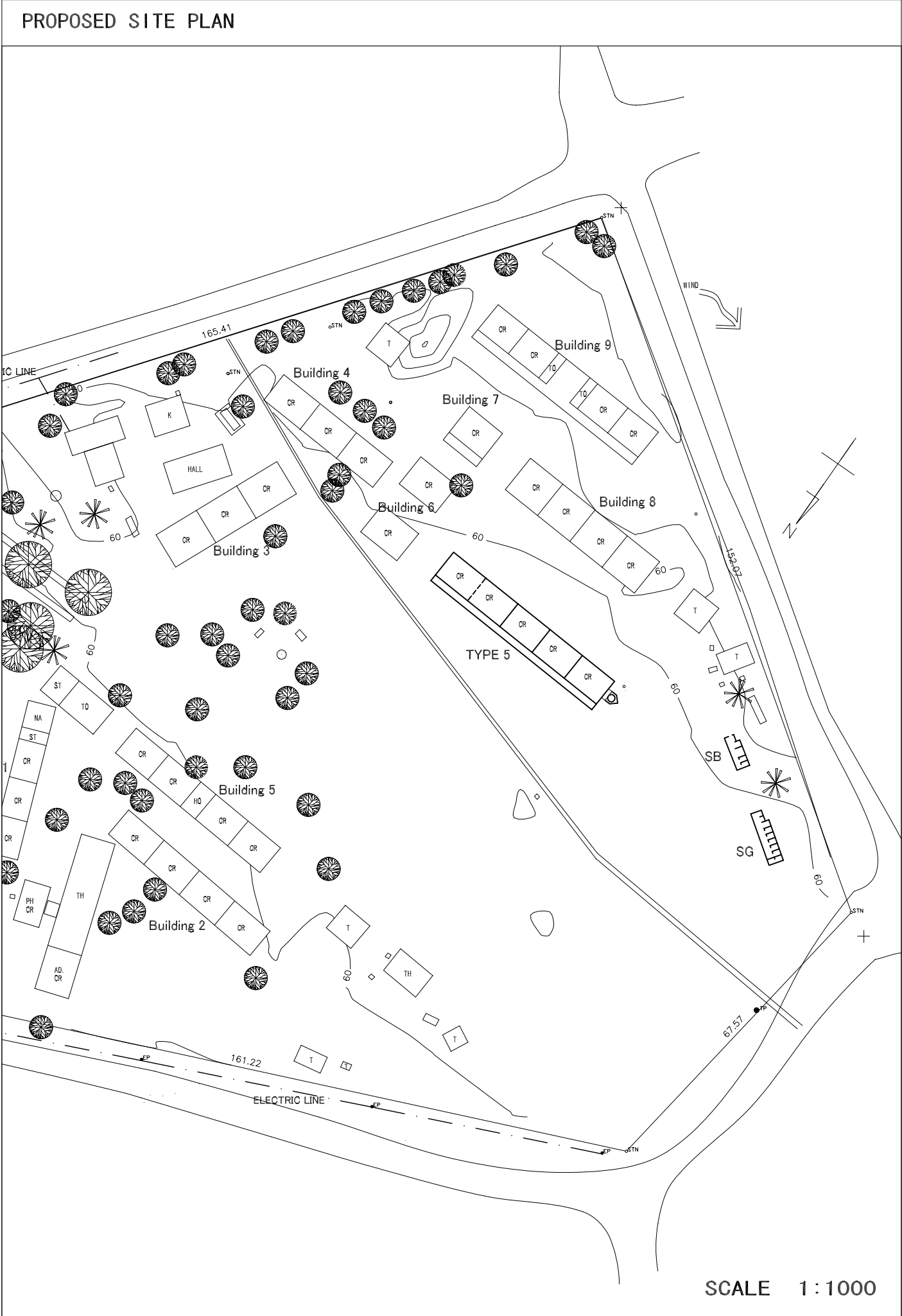


SCHOOL NAME	TEMEKE PRIMARY SCHOOL	SITE NO.	T-8
MUNICIPALITY	TEMEKE	DATE OF SURVEY	2001/5/09

EXISTING SITE CONDITION

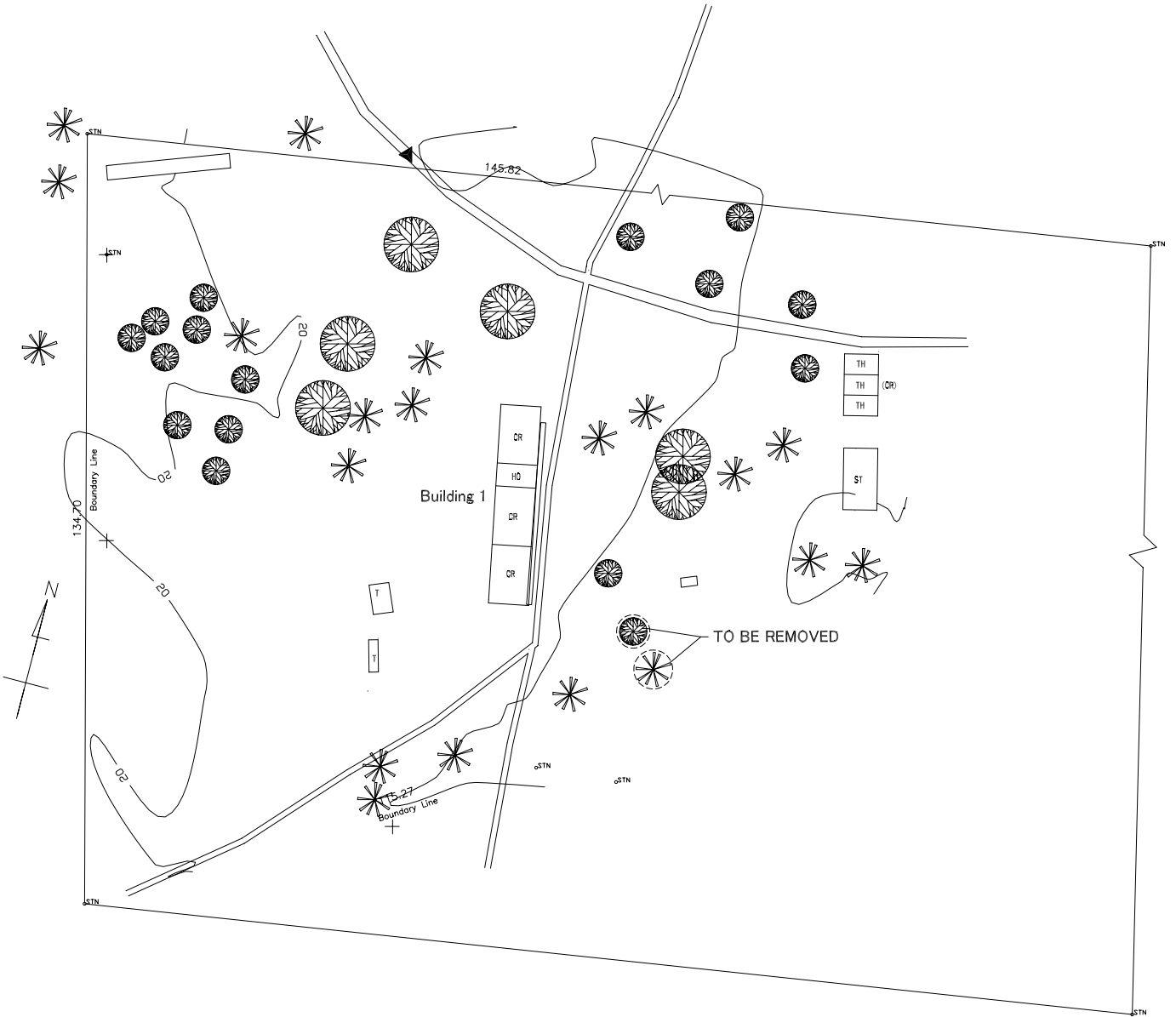


REGENGD			
CR	CLASS ROOM	HE	HOME ECONOMICS
TO	TEACHER'S OFFICE	CA	CANTEEN
HO	HEAD OFFICE	NU	NURSERY
T	TOILET	CO	CONFERENCE
L	LIBRARY	ST	STORAGE
K	KITCHEN	MO	MUNINCIPAL OFFICE
TH	TEACHER'S HOUSE	DS	DOMESTIC SCIENCE
ATO	ASCISTANT TEACHER'S OFFICE	DH	DINING HALL
TEMP	TEMPORALY BUILDING	WELL	
		ELECTRIC POST	
		ENTRANCE	
		TELEPHONE POST	
		CONTOUR LINE	
		FOR DEMOLITION	



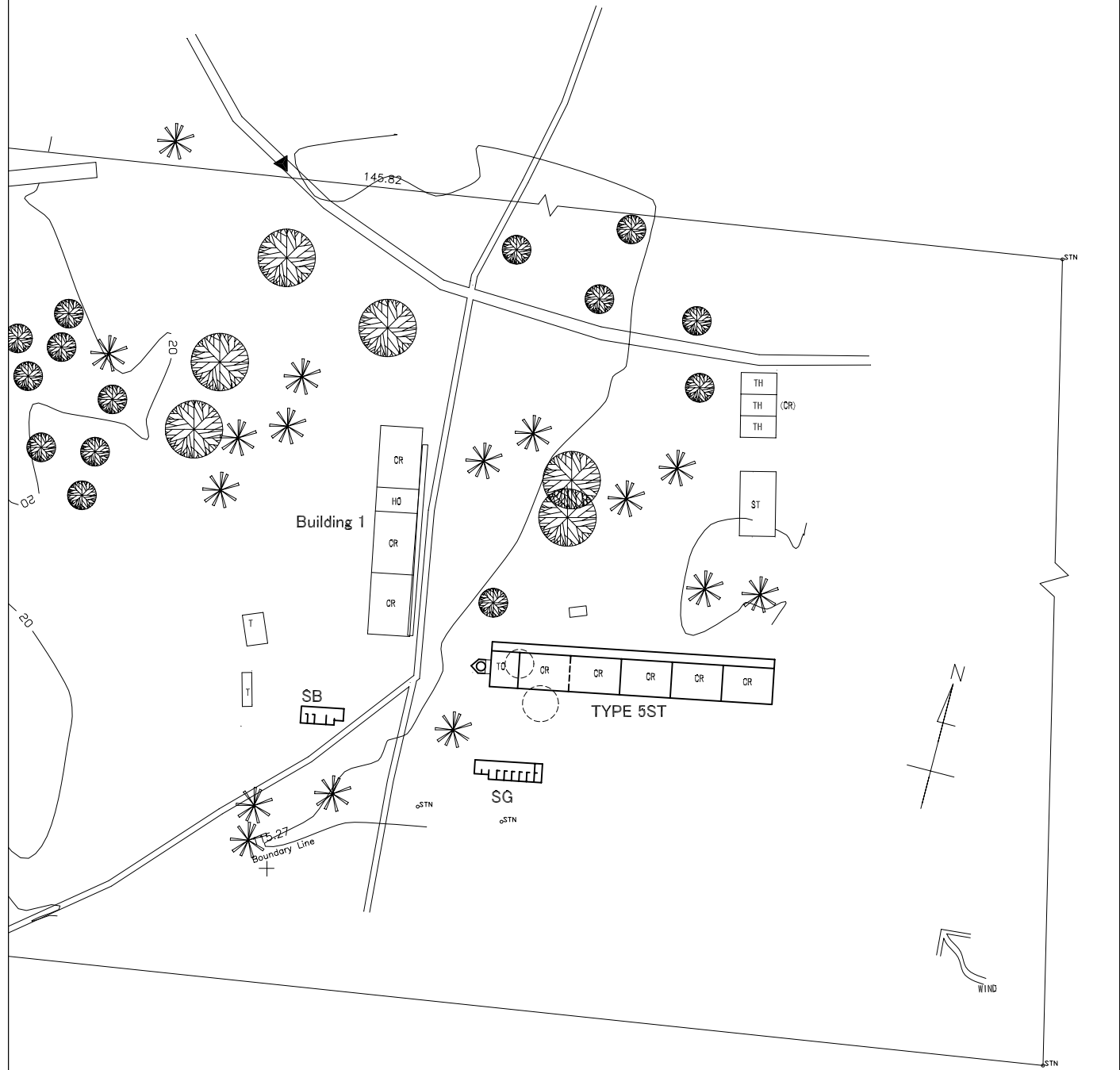
SCHOOL NAME	VIJIMBWEI PRIMARY SCHOOL	SITE NO.	T-10
MUNICIPALITY	TEMEKE	DATE OF SURVEY	2001/5/11

EXISTING SITE CONDITION



REGEN			
CR	CLASS ROOM	HE	HOME ECONOMICS
TO	TEACHER'S OFFICE	CA	CANTEEN
HO	HEAD OFFICE	NU	NURSERY
T	TOILET	CO	CONFERENCE
L	LIBRARY	ST	STORAGE
K	KITCHEN	MO	MUNINCHIPAL OFFICE
TH	TEACHER'S HOUSE	DS	DOMESTIC SCIENCE
ATO	ASCISTANT TEACHER'S OFFICE	DH	DINING HALL
		TEMP	TEMPORALY BUILDING
		●	WELL
		⊙	ELECTRIC POST
		▲	ENTRANCE
		⊙	TELEPHONE POST
		— () —	CONTOUR LINE
		▨	FOR DEMOLITION

PROPOSED SITE PLAN



SCALE 1:1000