

2-2-3 Basic Design Drawing

The scale of entire Project is shown in Table 2-15 and Basic Design drawings as listed below are shown respectively. The site plan of each Project school is shown in Appendices 7.

Drawing List

<u>No</u>	<u>Title</u>
01	Classrooms Building, Classrooms Building + Teacher's Office, Floor Plan Type3, Type4, Type5, Type6, 2-Type5ST(1,2F), 2-Type5MT(1,2F)
02	Classrooms Building + Teacher's Office, Teacher's Office, Classrooms Building with Movable Partitions, Floor Plan Type4ST, Type5ST, Type4LT, Type5LT, Type4MT, Type5MT, Type4-MP
03	Classrooms Building, Elevation, Section Type5, Type5MT
04	Classrooms Building, Classrooms Building + Teacher's office, Elevation, Section Type2-5ST, Type2-5MT
05	Classroom Plan, Furniture Layout, Furniture List
06	Teacher's office Plan, Furniture Layout, Furniture List
07	Toilet Building Plan, Elevation, Section SB, MB, LB, SG, MG, LG, XG
08	Pit Latrine Type Toilet Building Plan, Section SB(P), SG(P)

Table 2-15 Scale of Entire Project

Name of school		Number of classrooms	Project facilities				Building type	Number of building stories	Toilet's type (Boys)	Toilet's type (Girls)	Teacher's office type	Rainwater storage tanks	Floor Area (m ²)	Remarks
			C	T	TO	E								
Ilala														
I-1	Kinyerezi	4	○	○		○	4	1	SB	SG		1	307.45	
I-2	Boma	5	○	○		○	5	1	SB	SG		1	371.20	
I-3	Mchikichini	4	○	○		○	4	1	SB	SG		1	307.45	
I-4	Tabata	10	○	○	○	○	5MT+5	1	MB	LG	MT	2	799.26	School division
I-5	Ukonga	10	○	○	○	○	5ST+5	1	MB	LG	ST	2	770.76	School division
I-6	Gongo la mboto B	9	○	○		○	4+5	1	MB	LG		2	671.76	
I-8	Msongola	4	○	○		○	4	1	SB	SG		1	307.45	
I-9	Kiwalani	10	○	○	○	○	4ST,+6	1	MB	LG	ST	2	770.76	
I-10	Mvuti	4	○	○		○	4	1	SB	SG		1	307.45	
Kinondoni														
K-1	Tandale Magharibi	10	○	○		○	4+6	1	MB	LG		2	735.51	
K-2	Kimara B	4	○	○	○	○	4MT	1	SB	SG	MT	1	371.20	
K-3	Uzuri	10	○	○		○	5+5	1	MB	LG		2	735.51	
K-4	Mbezi	10	○	○	○	○	2-5MT	2	MB	LG	MT	2	924.90	Two-storied building due to small site
K-5	Mabibo	10	○	○	○	○	4ST+6	1	MB	LG	ST	2	770.76	
K-7	Mwananyamala B	10	○	○	○	○	2-5ST	2	MB	LG	ST	2	892.15	Two-storied building due to small site
K-8	Kunduchi	12	○	○		○	3+3+6	1	LB	XG		2	876.03	
K-9	Mburahati	10	○	○	○	○	5MT+5	1	MB	LG	MT	2	799.26	
K-10	Kawe A	10	○	○	○	○	4ST+6	1	MB	LG	ST	2	770.76	
Temeke														
T-1	Azimio	10	○	○	○	○	4ST+6	1	MB	LG	ST	2	770.76	
T-2	Sokoine	10	○	○	○	○	4ST+6	1	MB	LG	ST	2	770.76	
T-3	Mbagala	18	○	○	○	○	2LT+5+5+6	1	MBx2	MG, LG	LT	3	1,431.70	To be planned on different land due to school division
T-4	Madenge	10	○	○		○	3+3+4	1	MB	LG		2	735.51	
T-6	Rangi Tatu	11	○	○	○	○	5LT+6	1	LB	XG	LT	2	907.90	
T-7	Ufukoni	4	○	○	○	○	4ST	1	SB	SG	ST	1	342.70	
T-8	Temeke	5	○	○		○	5	1	SB	SG		1	371.20	
T-9	Yale Yale Puna	4	○	○	○	○	4ST	1	SB	SG	ST	1	342.70	
T-10	Vijibweni	5	○	○	○	○	5ST	1	SB	SG	ST	1	406.45	
		223	27	27	16	27						45	17,569.30	

Note 1 C(Classroom), T(Toilet), TO(Teacher's office), E(Equipment)

Note 2 3:3classrooms, 4:4classrooms, 5:5classrooms, 6:6classrooms

2-5MT: 2-Storey 10 Classrooms+Teacher's office (M)

2-5ST: 2-Storey 10 Classrooms+Teacher's office (S)

SB: Small Boy's Toilet SG: Small Girl's Toilet

MB: Medium Boy's Toilet MG: Medium Girl's Toilet

LB: Large Boy's Toilet LG: Large Girl's Toilet

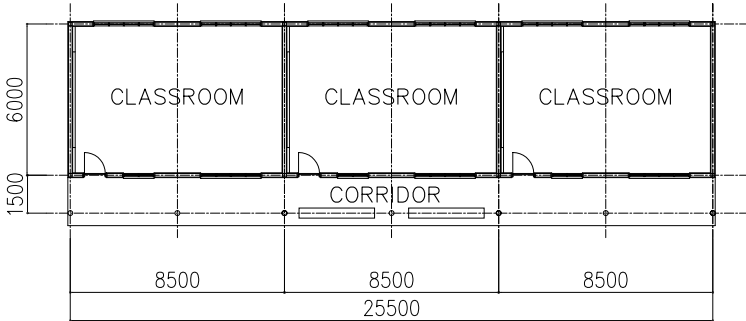
XG: Extra large Girl's Toilet

ST: Small Teacher's Office

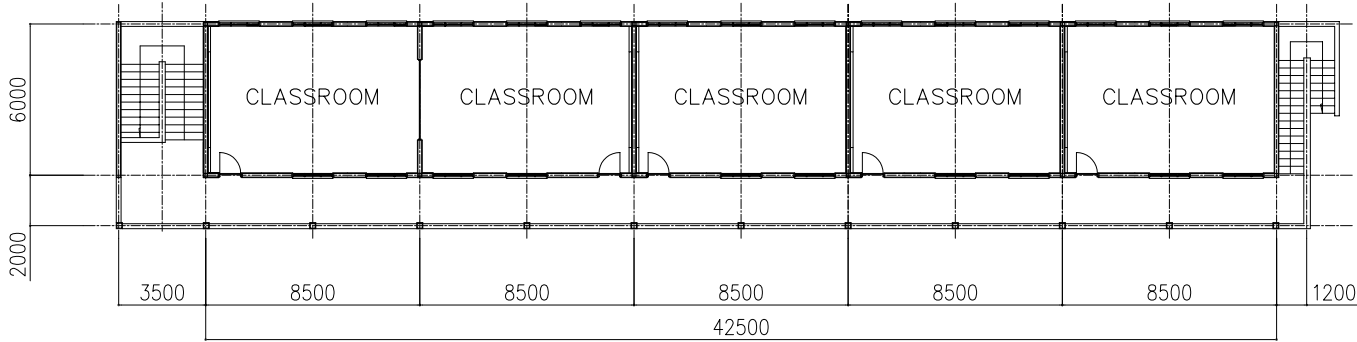
MT: Medium Teacher's Office

LT: Large Teacher's Office

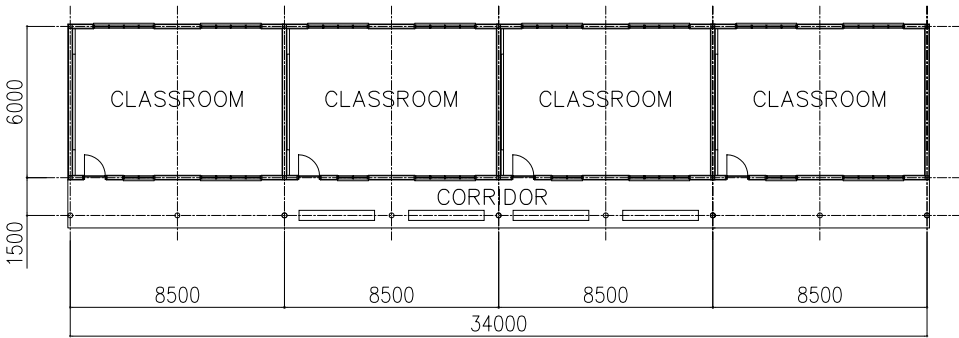
TYPE 3



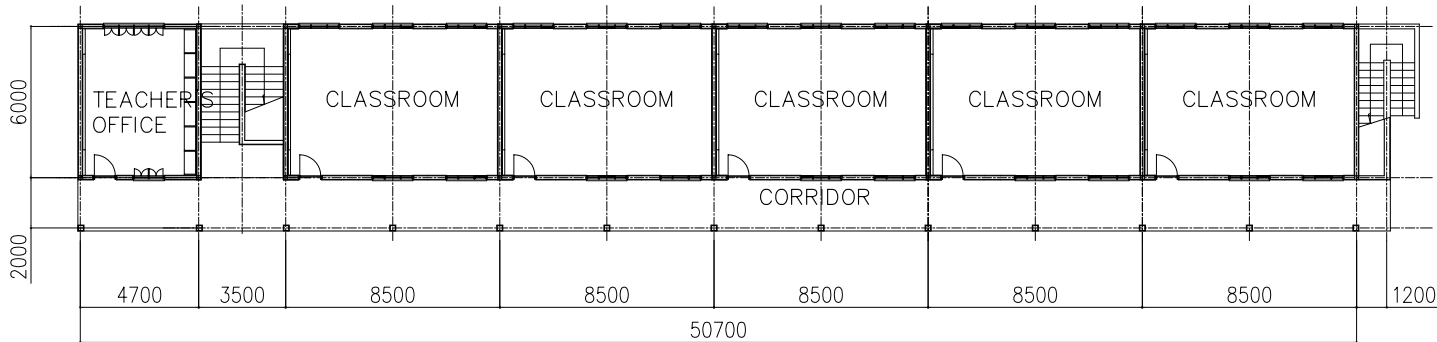
2-TYPE 5ST(2F), 2-TYPE 5MT(2F)



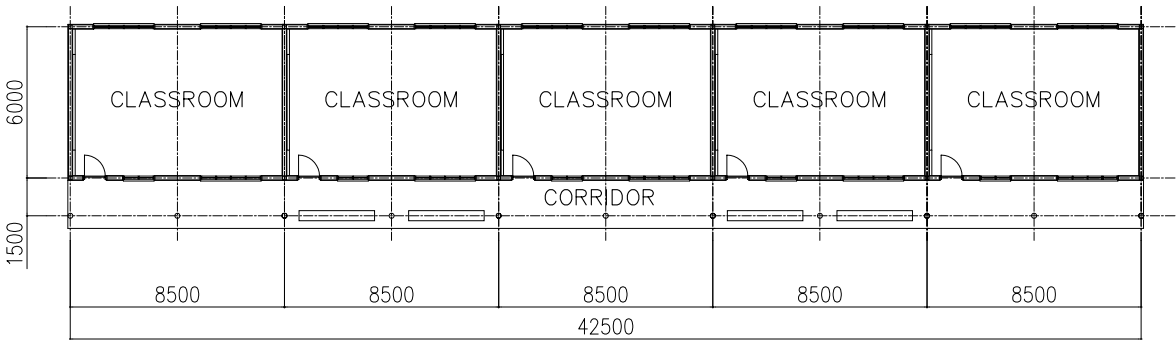
TYPE 4



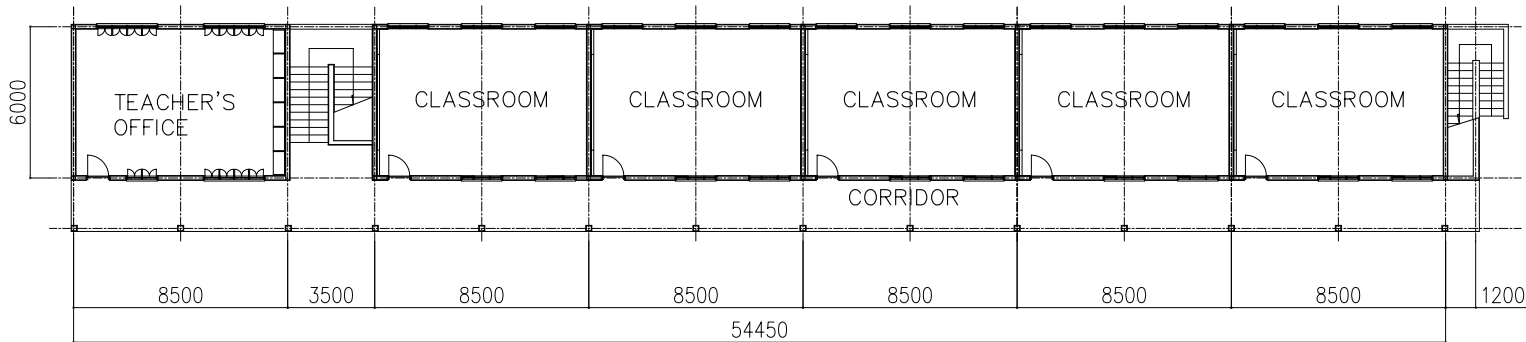
2-TYPE 5ST(GF)



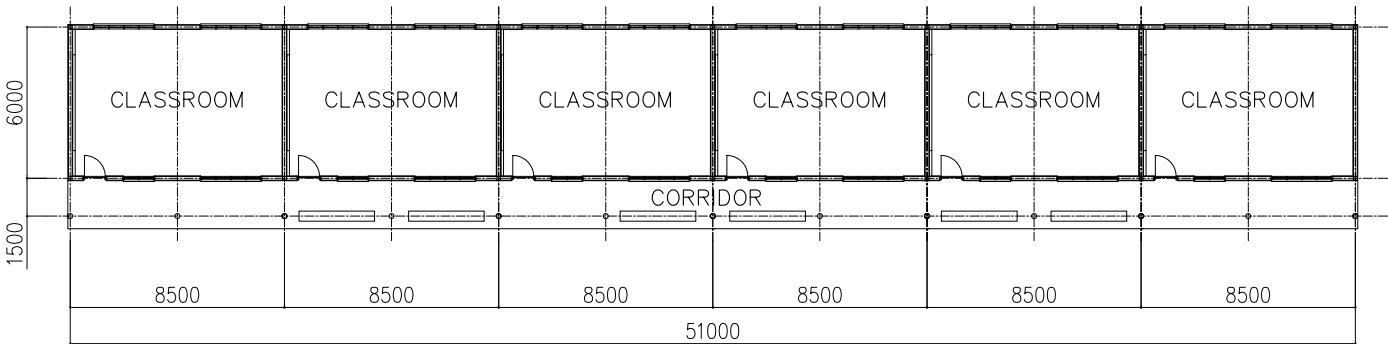
TYPE 5



2-TYPE 5MT(GF)

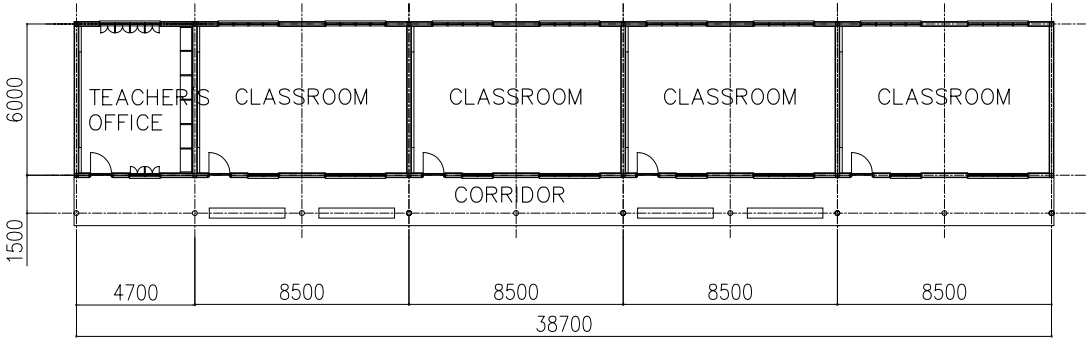


TYPE 6

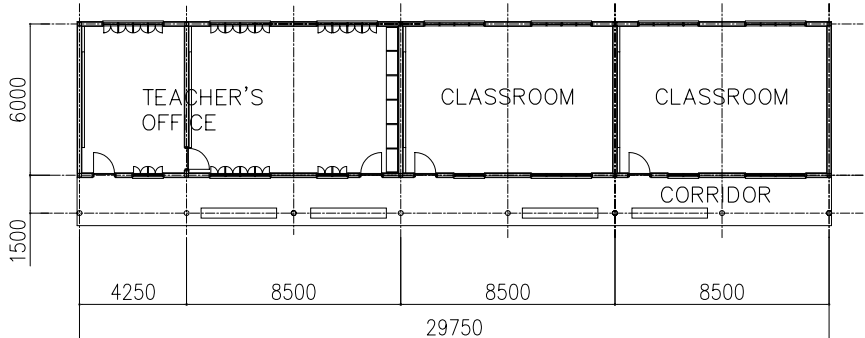


Notes: 1) A number before the type name indicates the number of building stories.
2) A number after the type name indicates the number of classrooms.
3) An abbreviation after the type name indicates followings:
ST : Teacher's office (for10 persons)
MT : Teacher's office (for20 persons)
LT : Teacher's office (for30 persons)
MP : Multipurpose Room (Provided with a movable partitions)

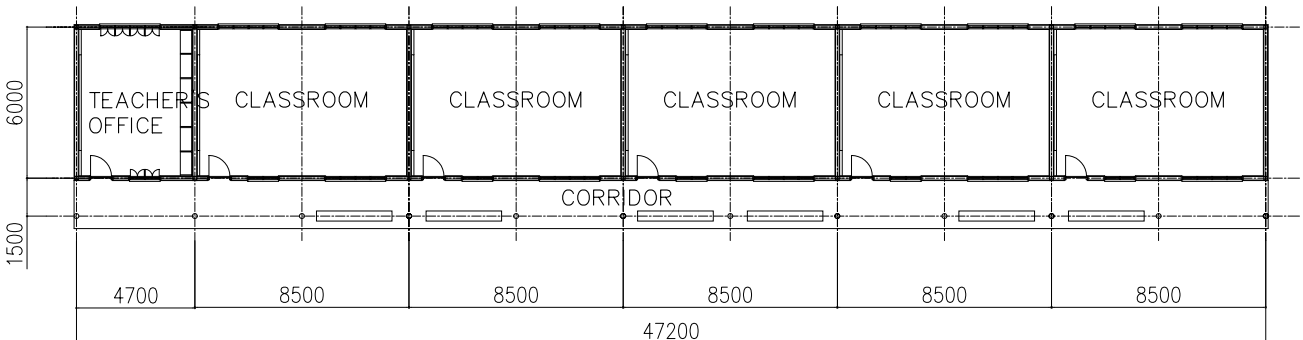
TYPE 4ST



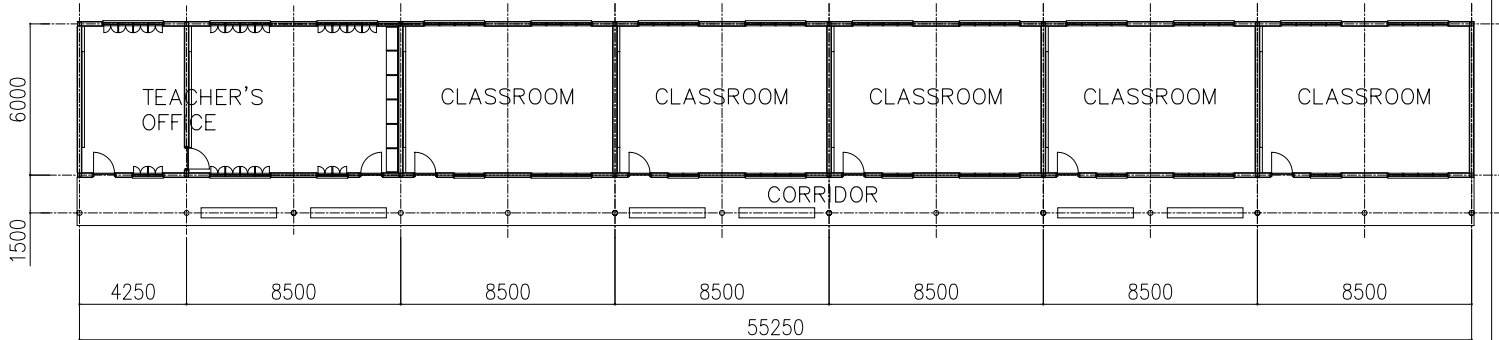
TYPE 2LT



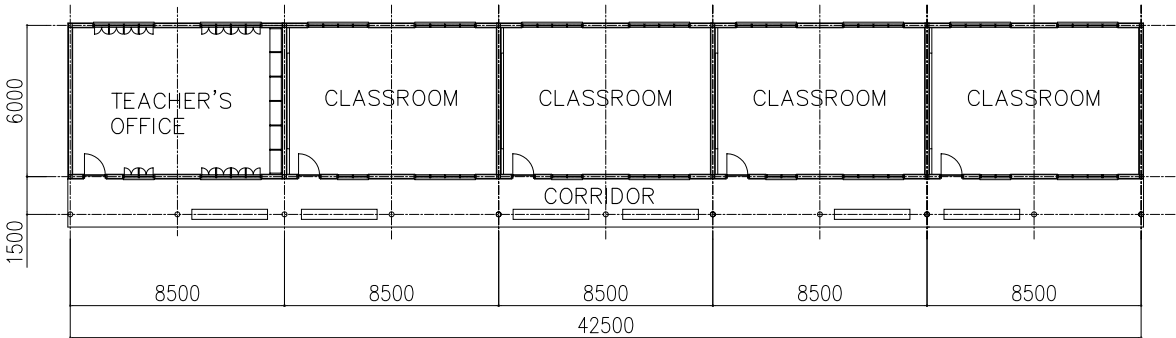
TYPE 5ST



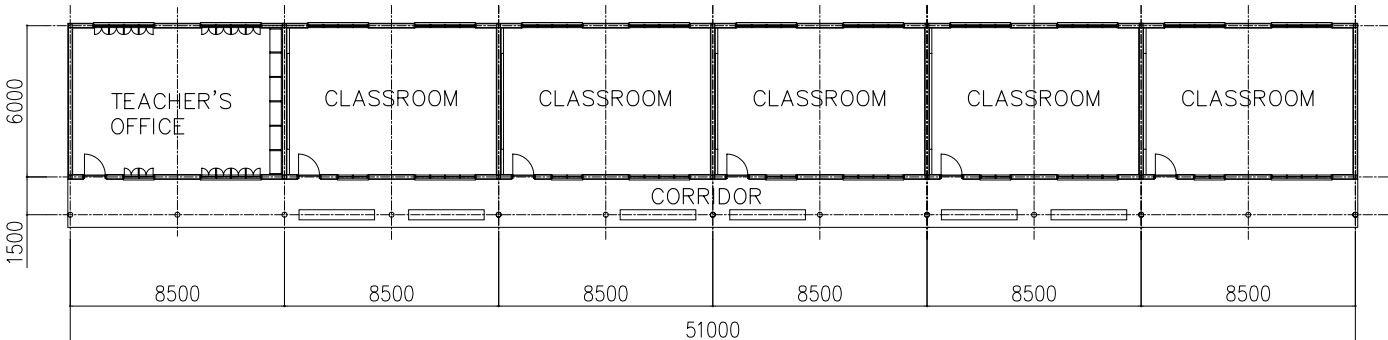
TYPE 5LT



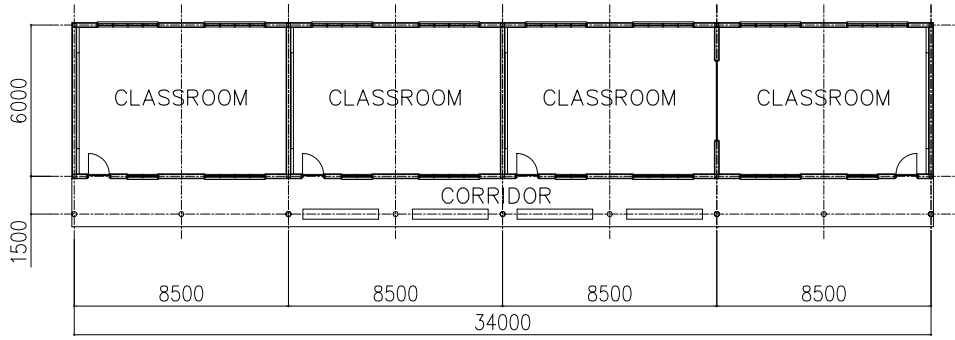
TYPE 4MT

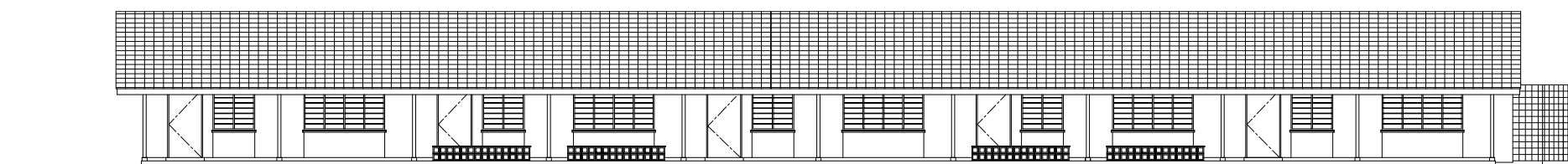


TYPE5MT

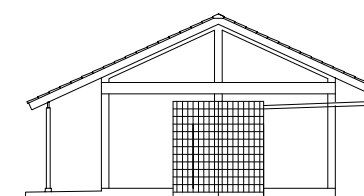


TYPE4-MP (Provided with a movable partitions)

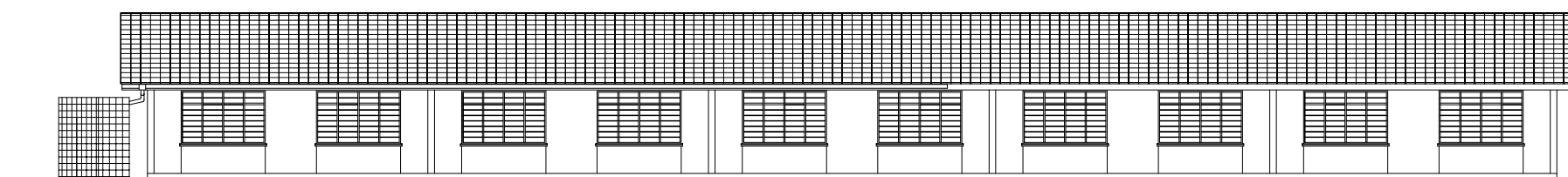




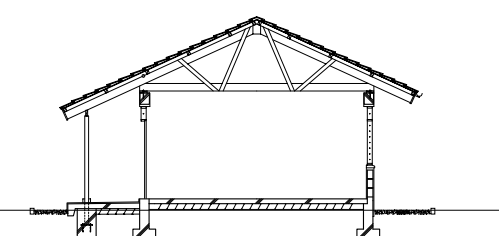
TYPE 5 FRONT ELEVATION



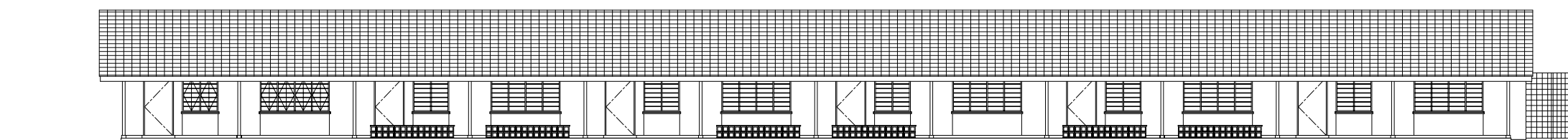
TYPE 5, 5MT SIDE ELEVATION



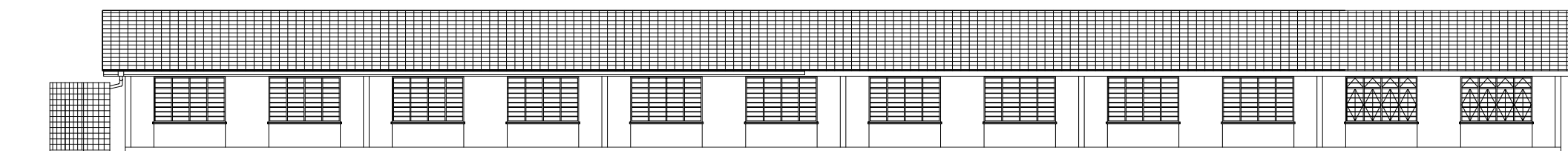
TYPE 5 REAR ELEVATION



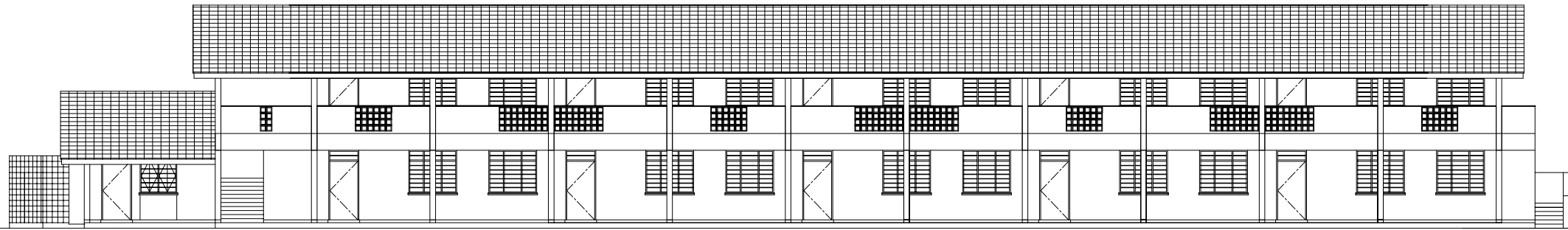
TYPE 5, 5MT SECTION



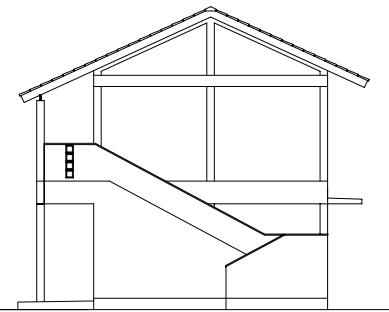
TYPE 5MT FRONT ELEVATION



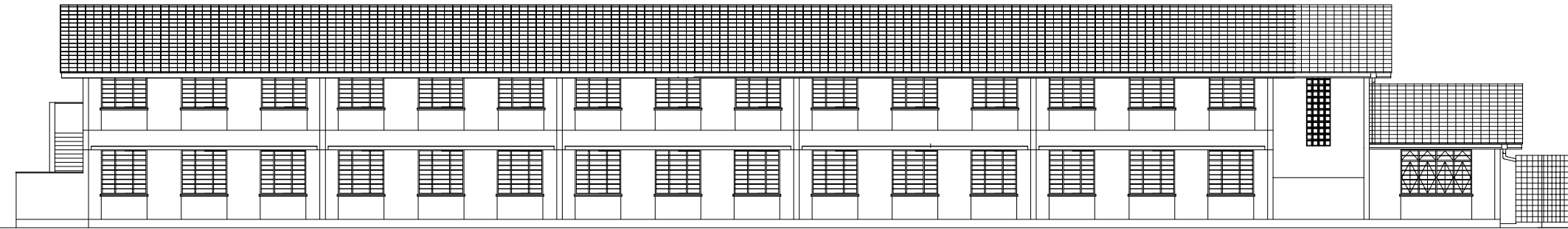
TYPE 5MT REAR ELEVATION



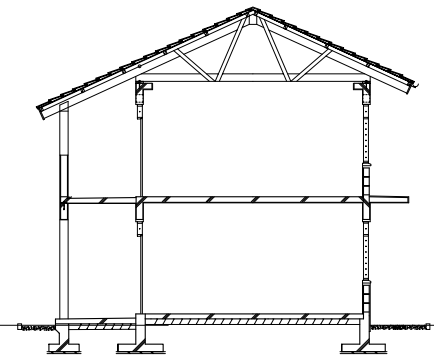
2-TYPE 5ST FRONT ELEVATION



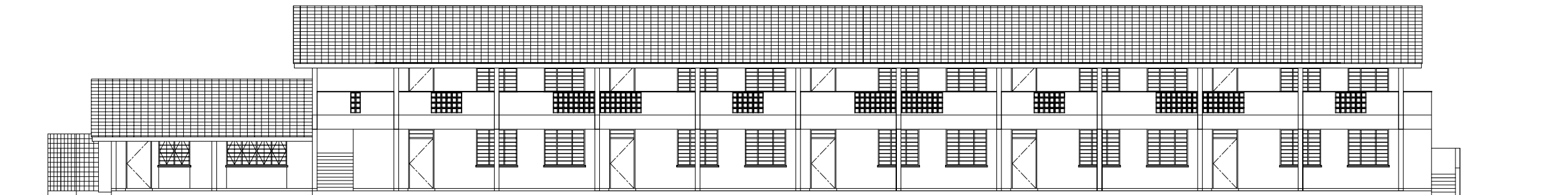
2-TYPE 5ST, 2-TYPE 5MT SIDE ELEVATION



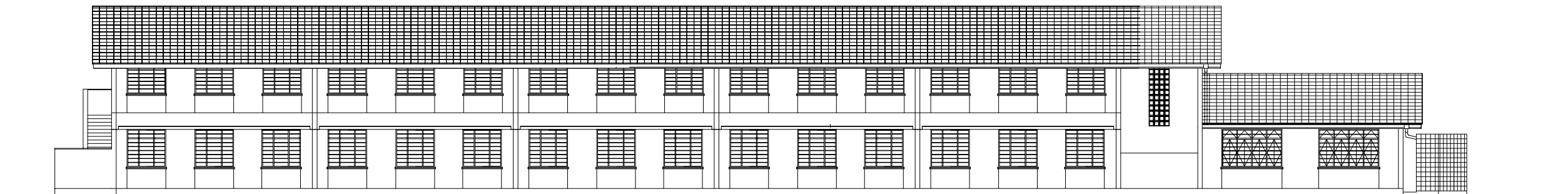
2-TYPE 5ST REAR ELEVATION



2-TYPE 5ST, 2-TYPE 5MT SECTION



2-TYPE 5MT FRONT ELEVATION



2-TYPE 5MT REAR ELEVATION