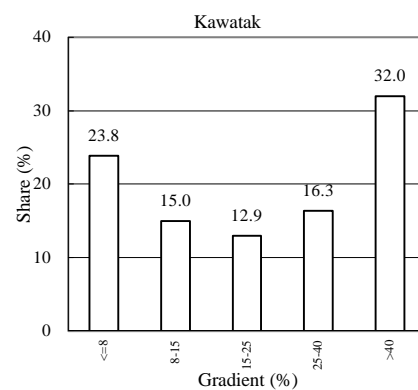
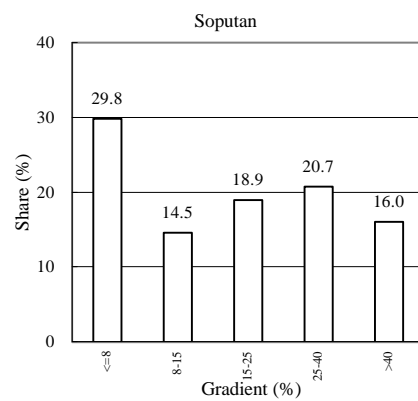
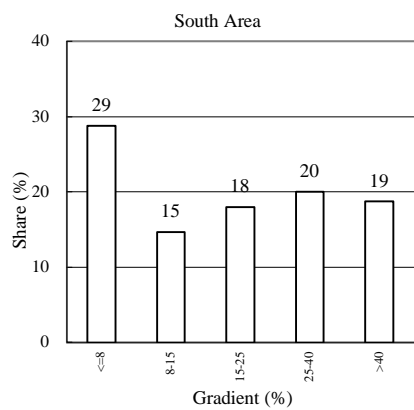
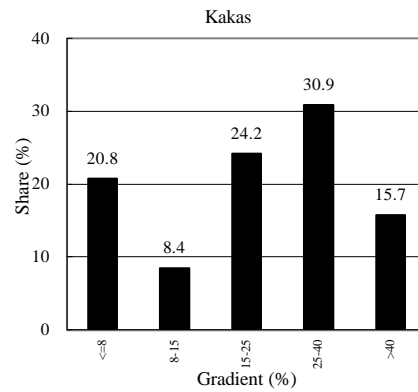
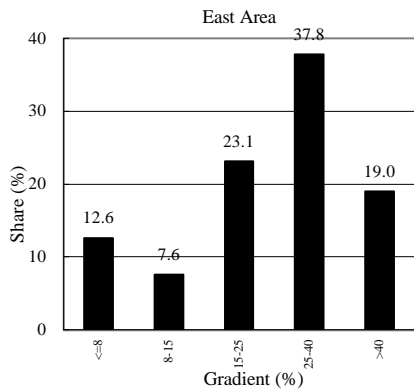
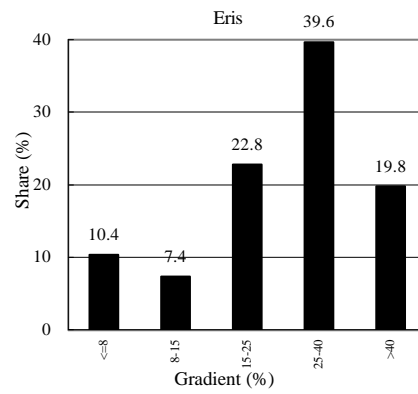
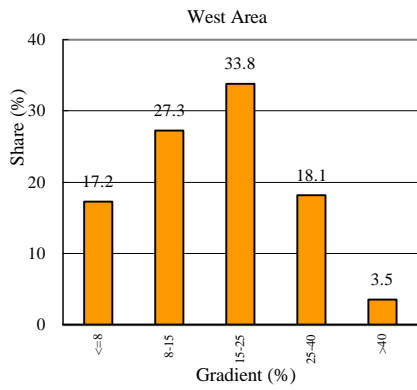


Studi Rehabilitasi Hutan Lindung dan Lahan Kritis di Daerah Aliran Sungai Tondano Republik Indonesia

Gambar II-4.2.1 Wilayah Intensif yang Diusulkan

Japan International Cooperation Agency

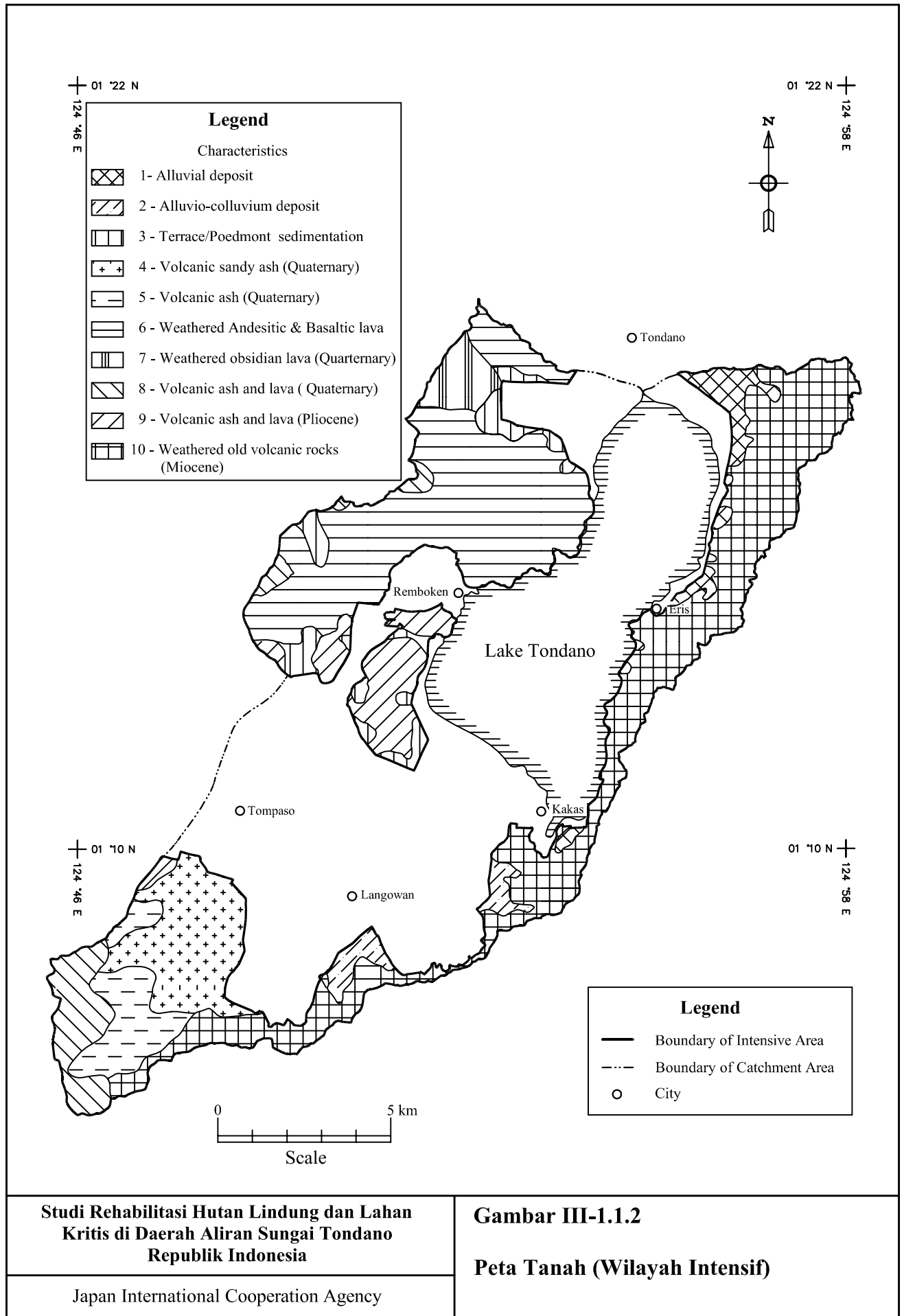


Studi Rehabilitasi Hutan Lindung dan Lahan Kritis
Di Daerah Aliran Sungai Tondano
Republik Indonesia

Japan International Cooperation Agency

Gambar III-1.1.1

Distribusi Lereng (Wilayah Intensif)

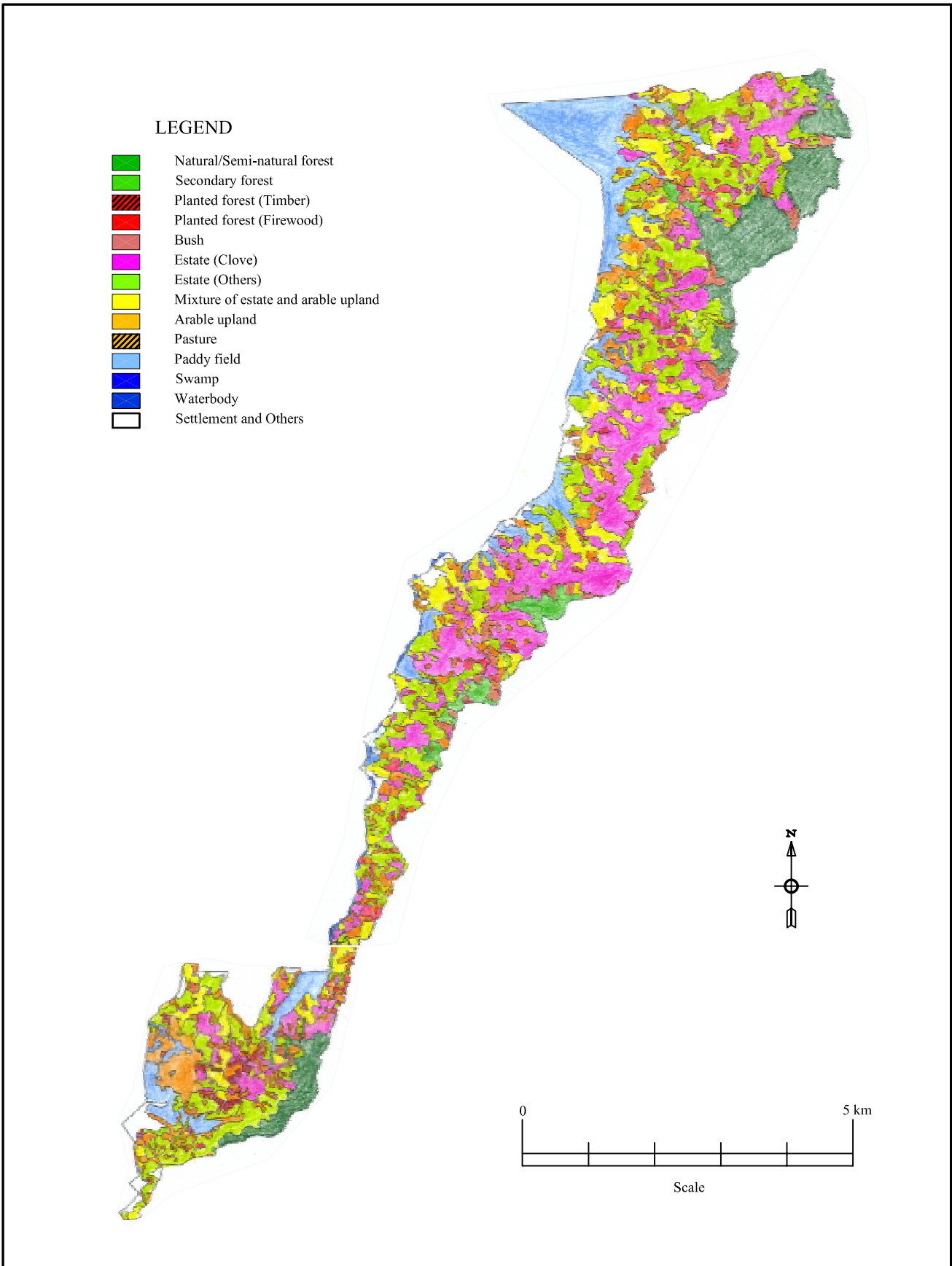


Studi Rehabilitasi Hutan Lindung dan Lahan Kritis di Daerah Aliran Sungai Tondano Republik Indonesia

Japan International Cooperation Agency

Gambar III-1.1.2

Peta Tanah (Wilayah Intensif)



Studi Rehabilitasi Hutan Lindung dan Lahan Kritis di Daerah Aliran Sungai Tondano Republik Indonesia

Japan International Cooperation Agency

Gambar III-1.3.1

Peta Tataguna Lahan di Wilayah Timur (Wilayah Intensif)