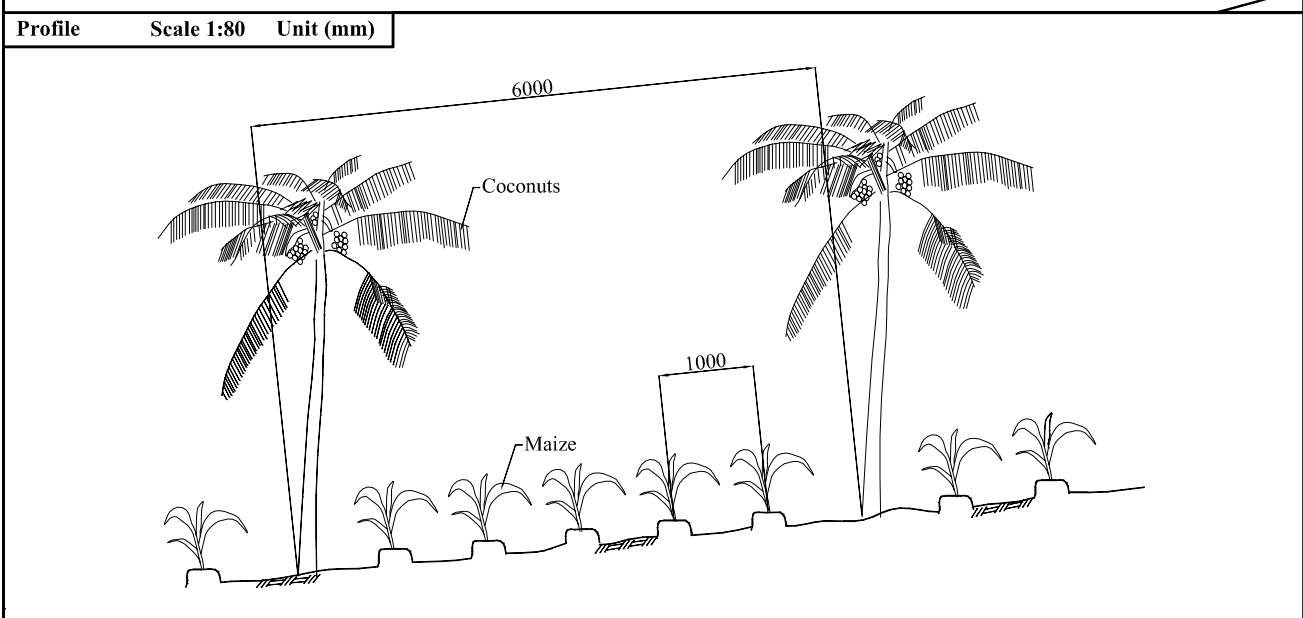
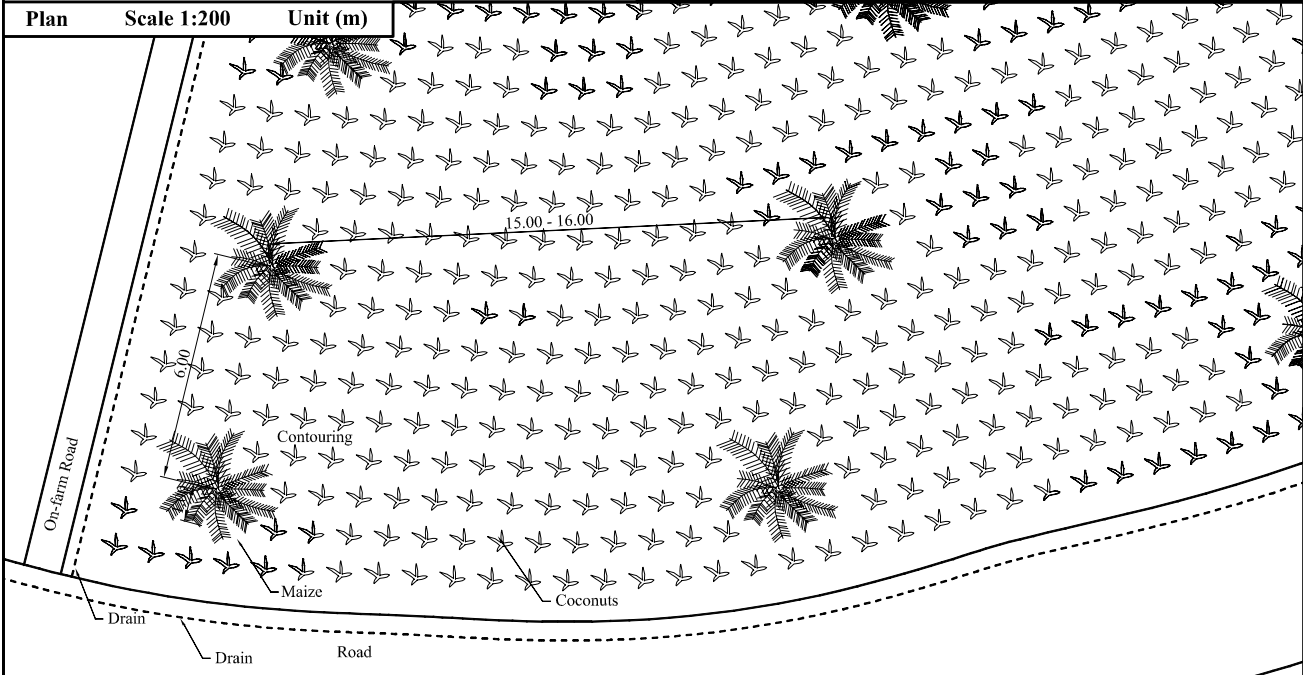



Data		Photo
Crops	Coconuts & Maize	
Cropping Interval		
Coconuts	6m	
Maize	1m	
Farming Practice	Contouring	

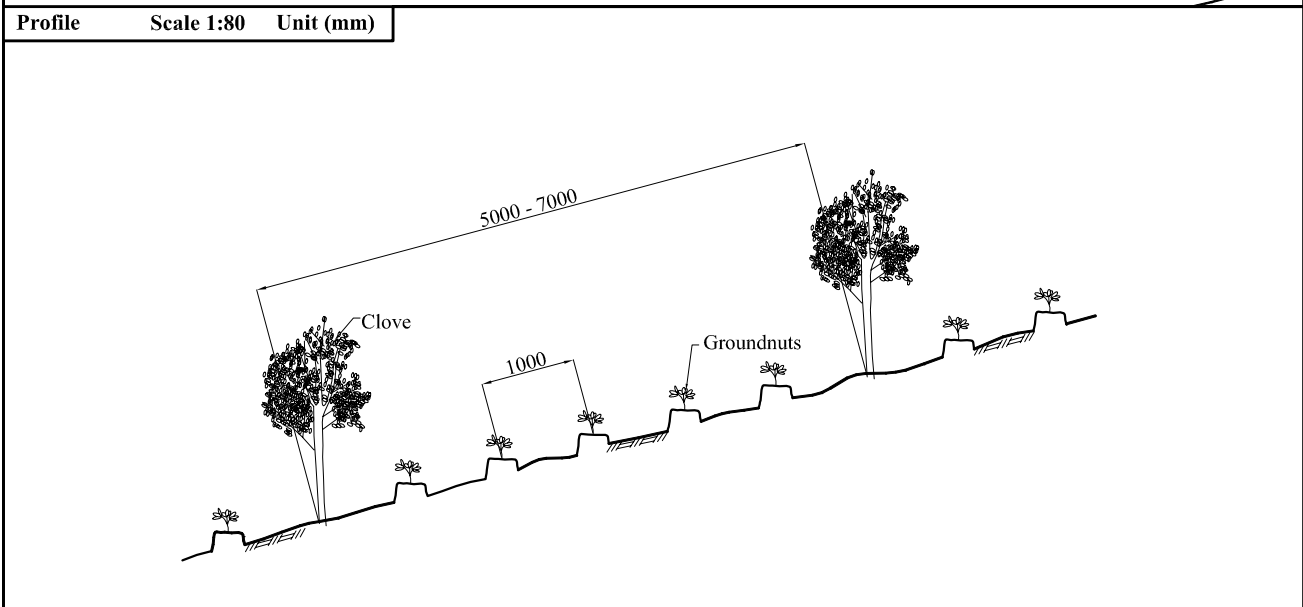
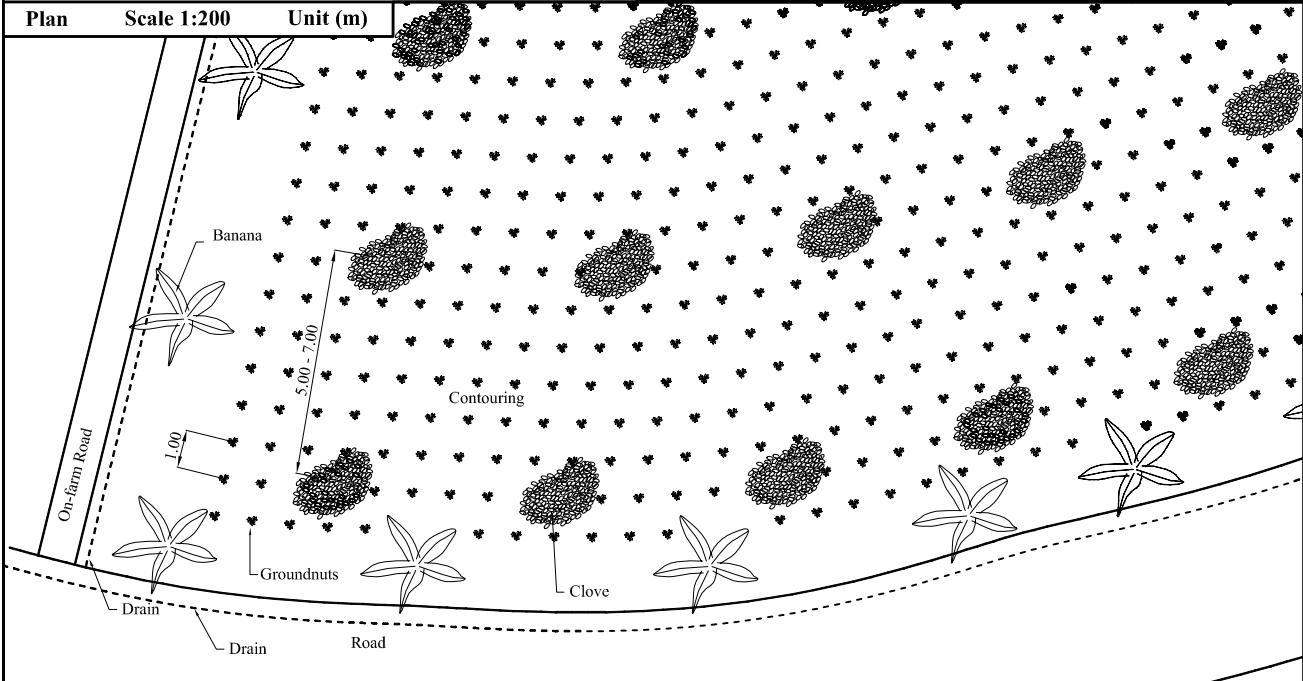


Studi Rehabilitasi Hutan Lindung dan Lahan Kritis di Daerah Aliran Sungai Tondano Republik Indonesia

Japan International Cooperation Agency

Gambar II-1.7.3
Sistem Agroforestry yang dikelola dengan baik dengan Kelapa

Data		Photo
Crops	Clove & Groundnuts	
Cropping Interval		
Clove	5 - 7m	
Groundnuts	1m	
Farming Practice	Contouring	
Hedgerow	with Bananas	



Studi Rehabilitasi Hutan Lindung dan Lahan Kritis di Daerah Aliran Sungai Tondano Republik Indonesia

Japan International Cooperation Agency

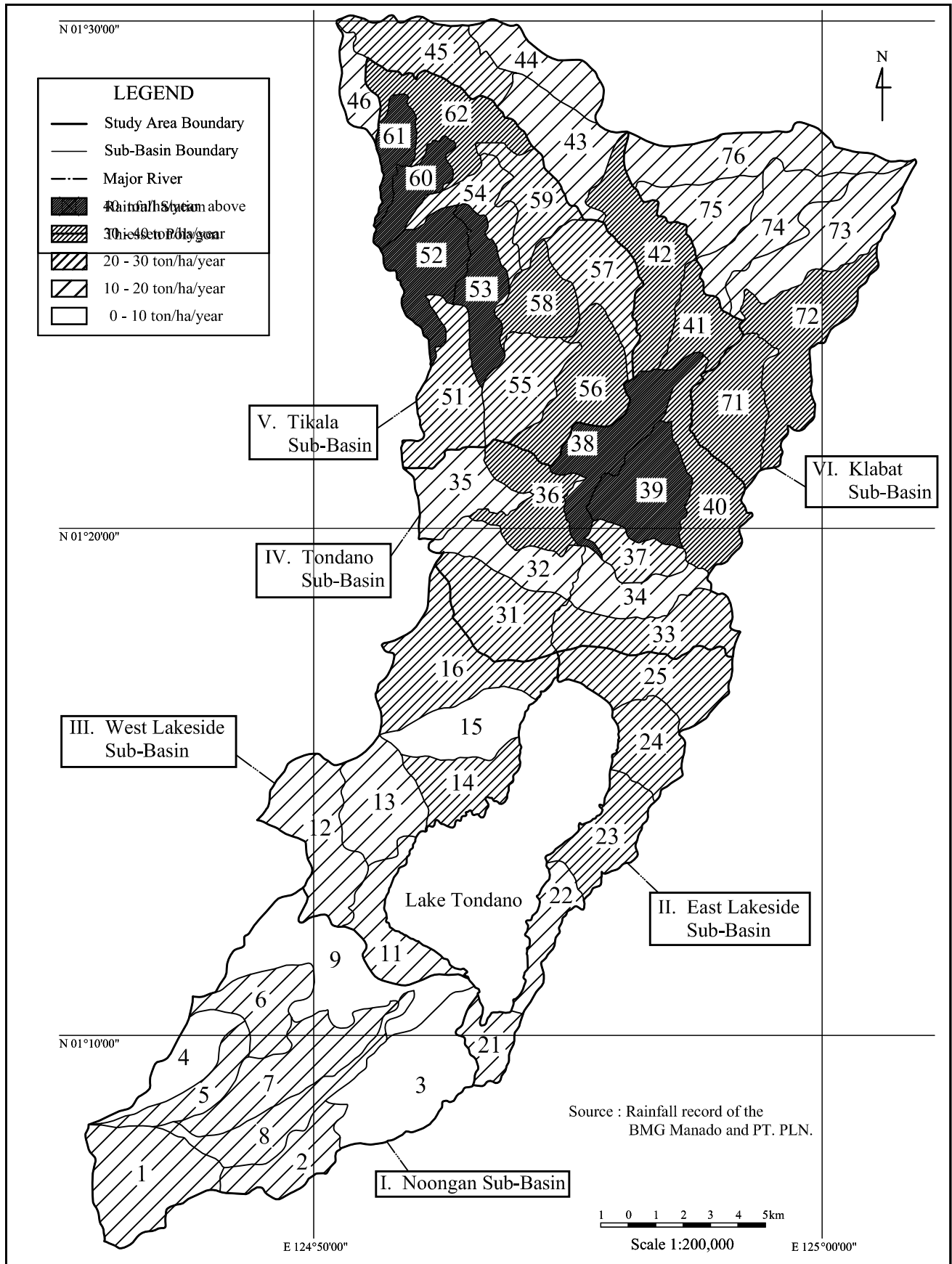
Gambar II-1.7.4
Sistem Agroforesty yang dikelola dengan Cengkih



Studi Rehabilitasi Hutan Lindung dan Lahan Kritis di Daerah Aliran Sungai Tondano Republik Indonesia

Japan International Cooperation Agency

**Gambar II-1.8.1
Wilayah dengan Degradasi lahan Kritis Yang Potensial (Wilayah Studi**



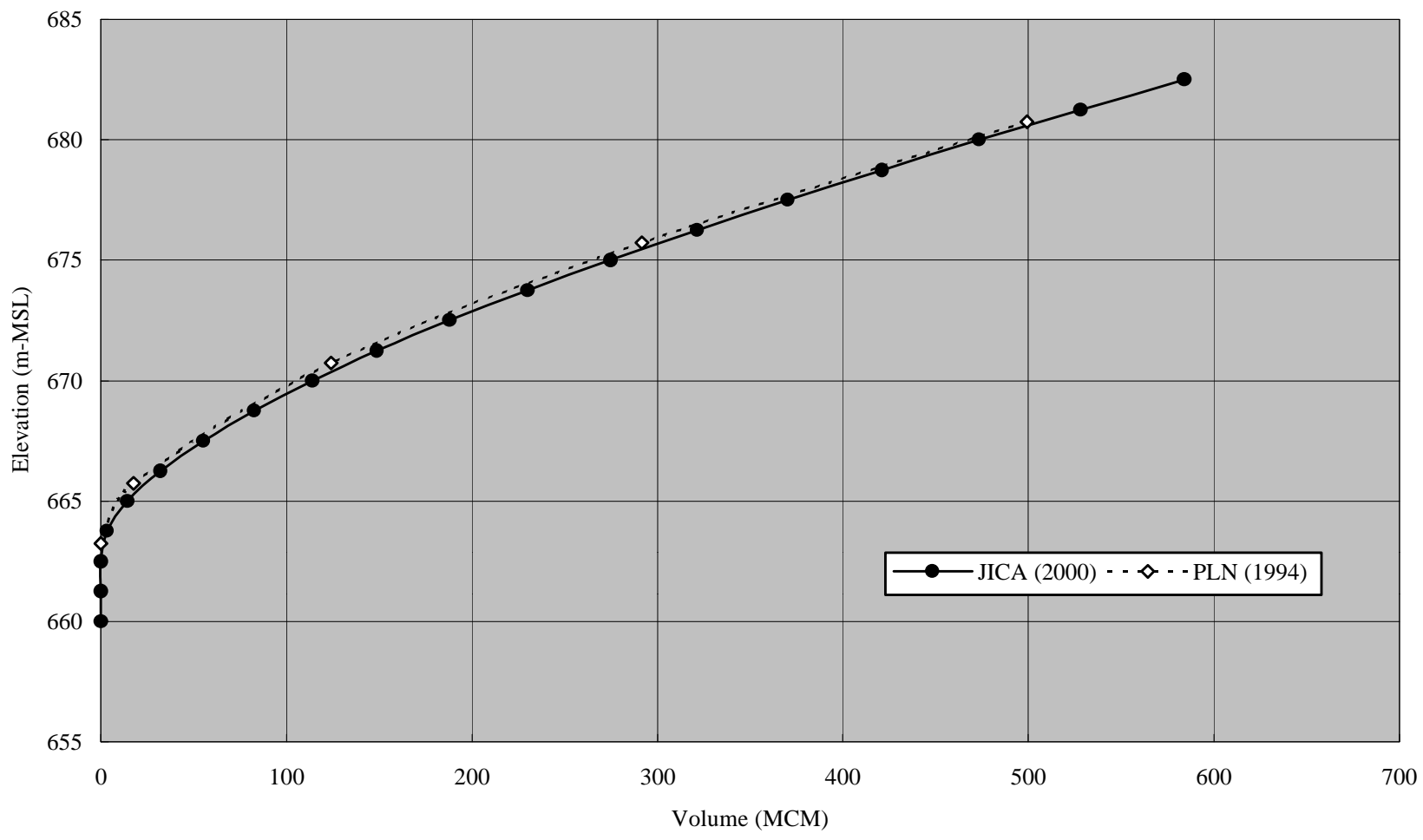
Studi Rehabilitasi Hutan Lindung dan Lahan Kritis di Daerah Aliran Sungai Tondano Republik Indonesia

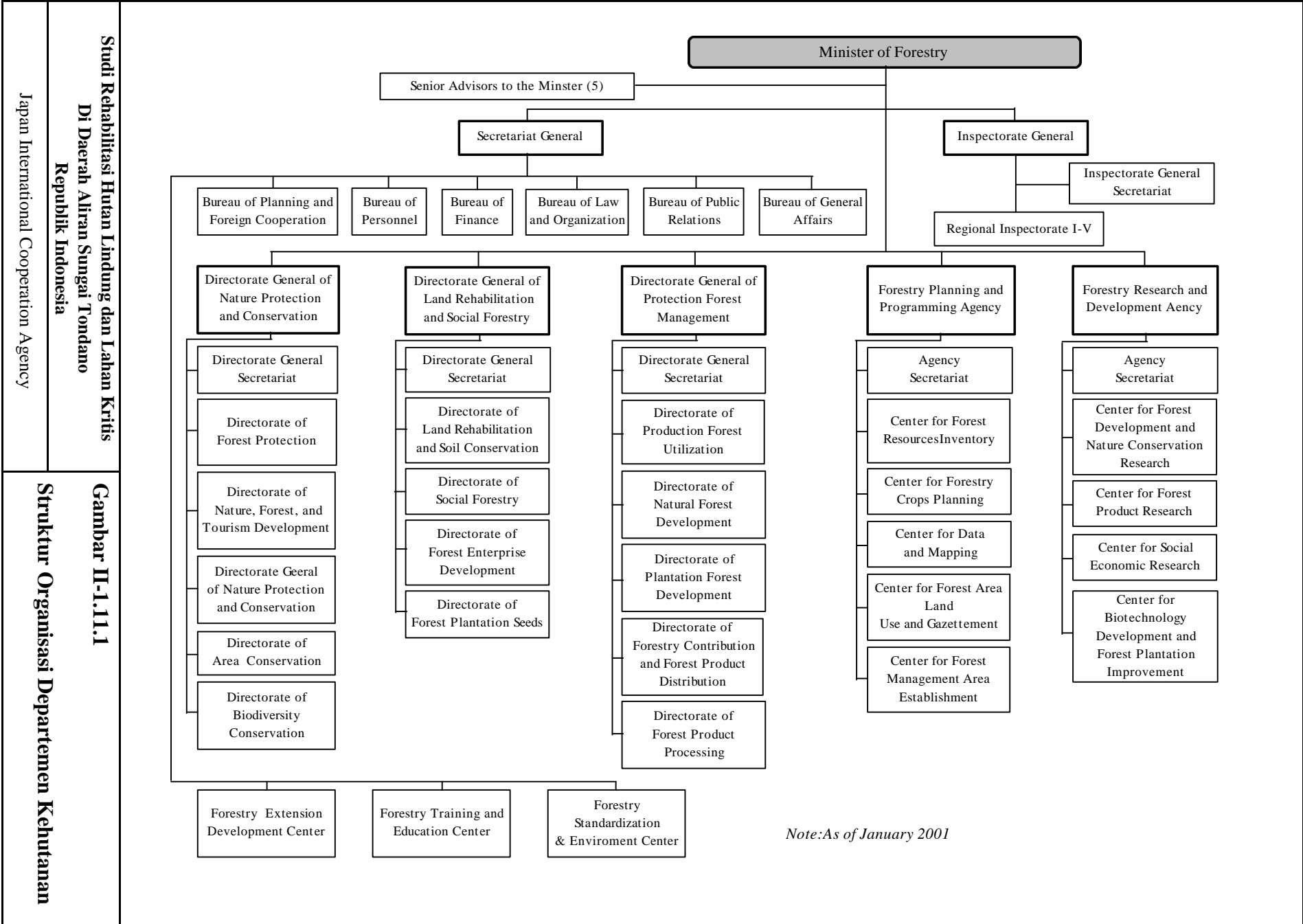
Japan International Cooperation Agency

Gambar II-1.8.2
Hasil dari Estimasi Kehilangan Tanah (Wilayah Studi)

Studi Rehabilitasi Hutan Lindung dan
Lahan Kritis Di Daerah Aliran Sungai
Tondano
Japan International Cooperation Agency

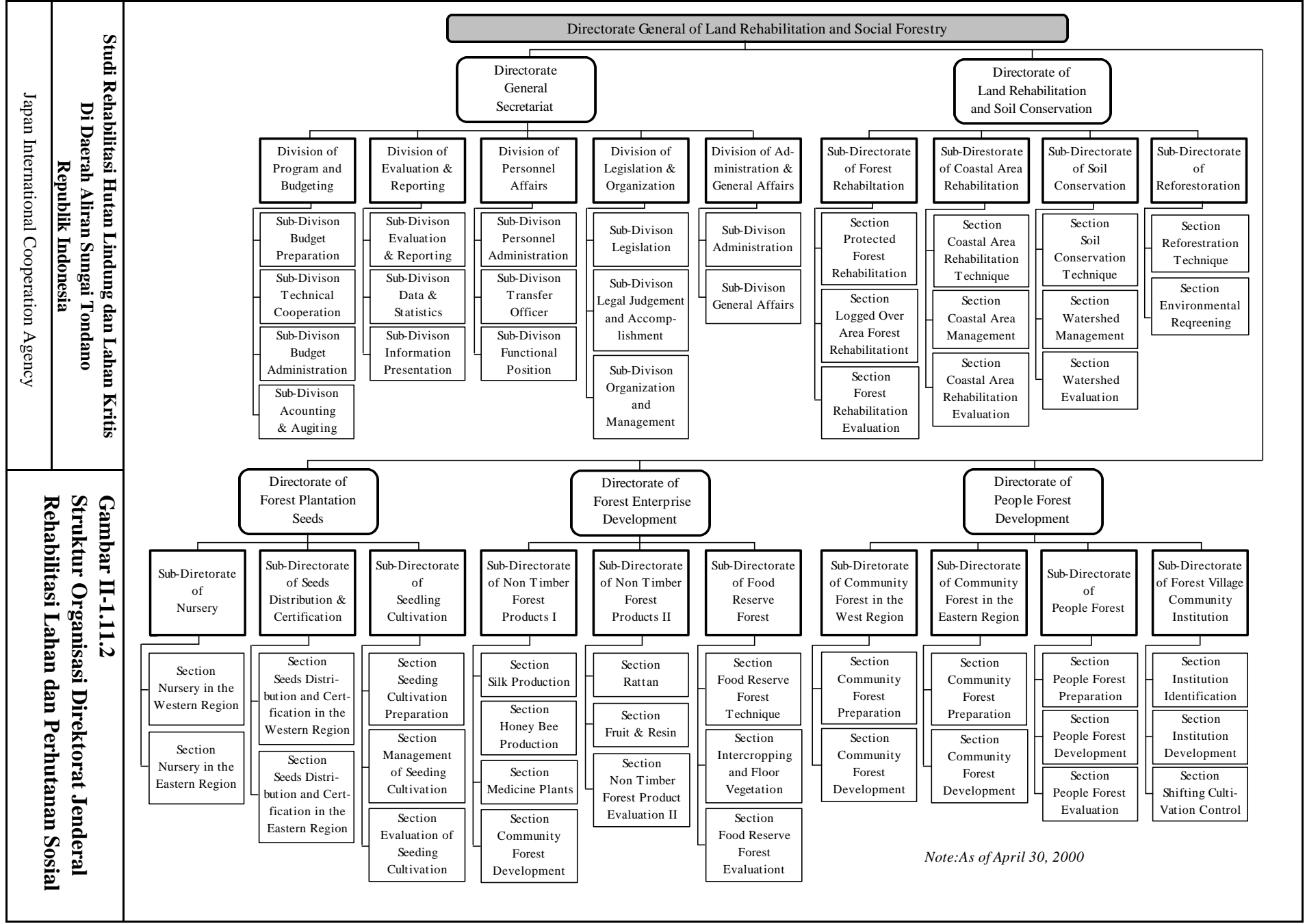
Gambar II-1.8.3
Perbandingan Hasil Sounding
(Bathymetry) untuk Danau Tondano





**Studi Rehabilitasi Hutan Lindung dan Lahan Kritis
 Di Daerah Aliran Sungai Tondano
 Republik Indonesia**
 Japan International Cooperation Agency

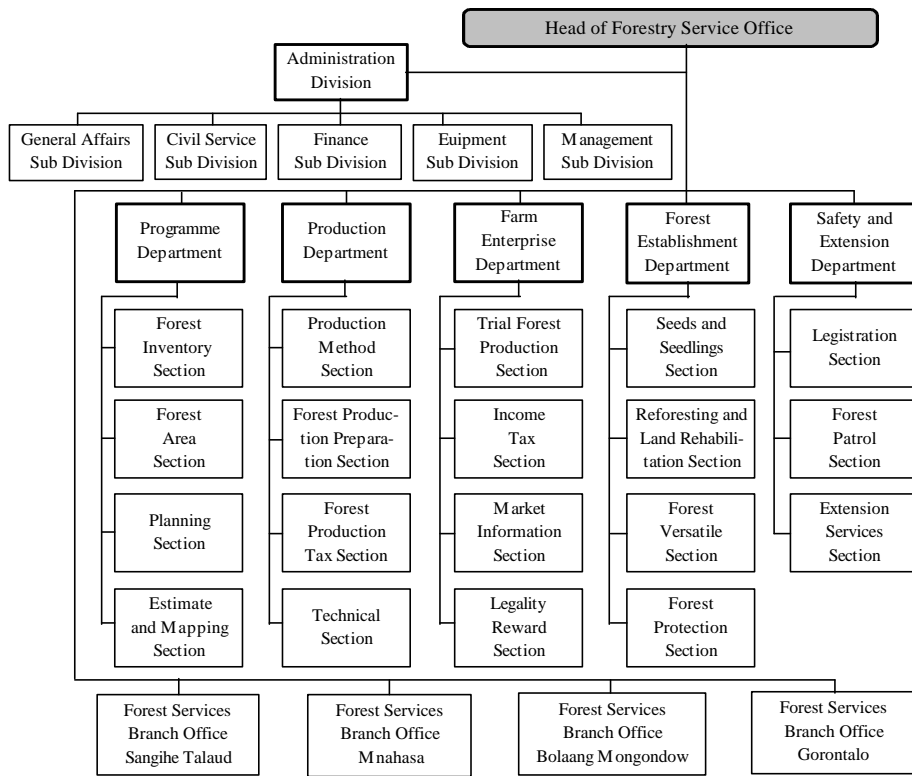
Gambar II-1.11.1
Struktur Organisasi Departemen Kehutanan



**Studi Rehabilitasi Hutan Lindung dan Lahan Kritis
 Di Daerah Aliran Sungai Tondano
 Republik Indonesia**
 Japan International Cooperation Agency

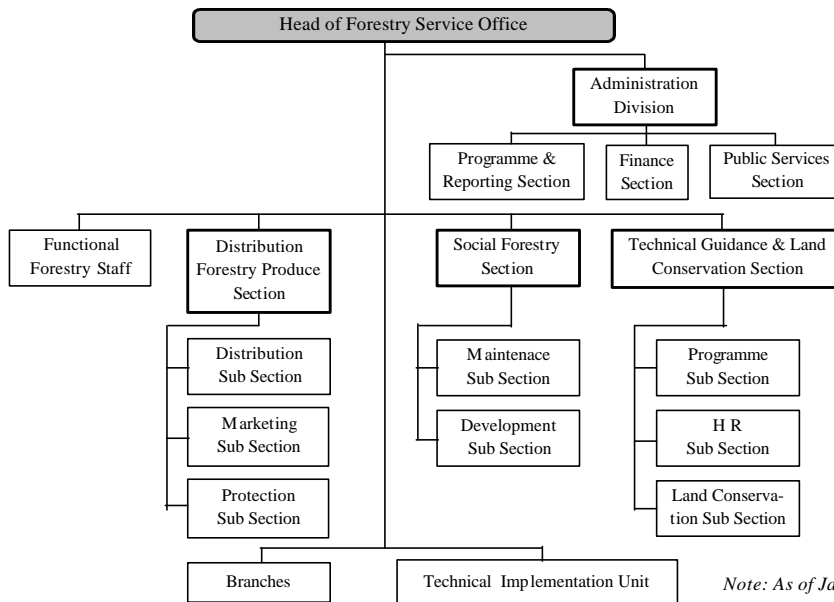
Gambar II-1.11.2
Struktur Organisasi Direktorat Jenderal Rehabilitasi Lahan dan Perhutanan Sosial

North Sulawesi Province Forestry Service Office



Note: As of January 2001

Minahasa District Forestry Service Office

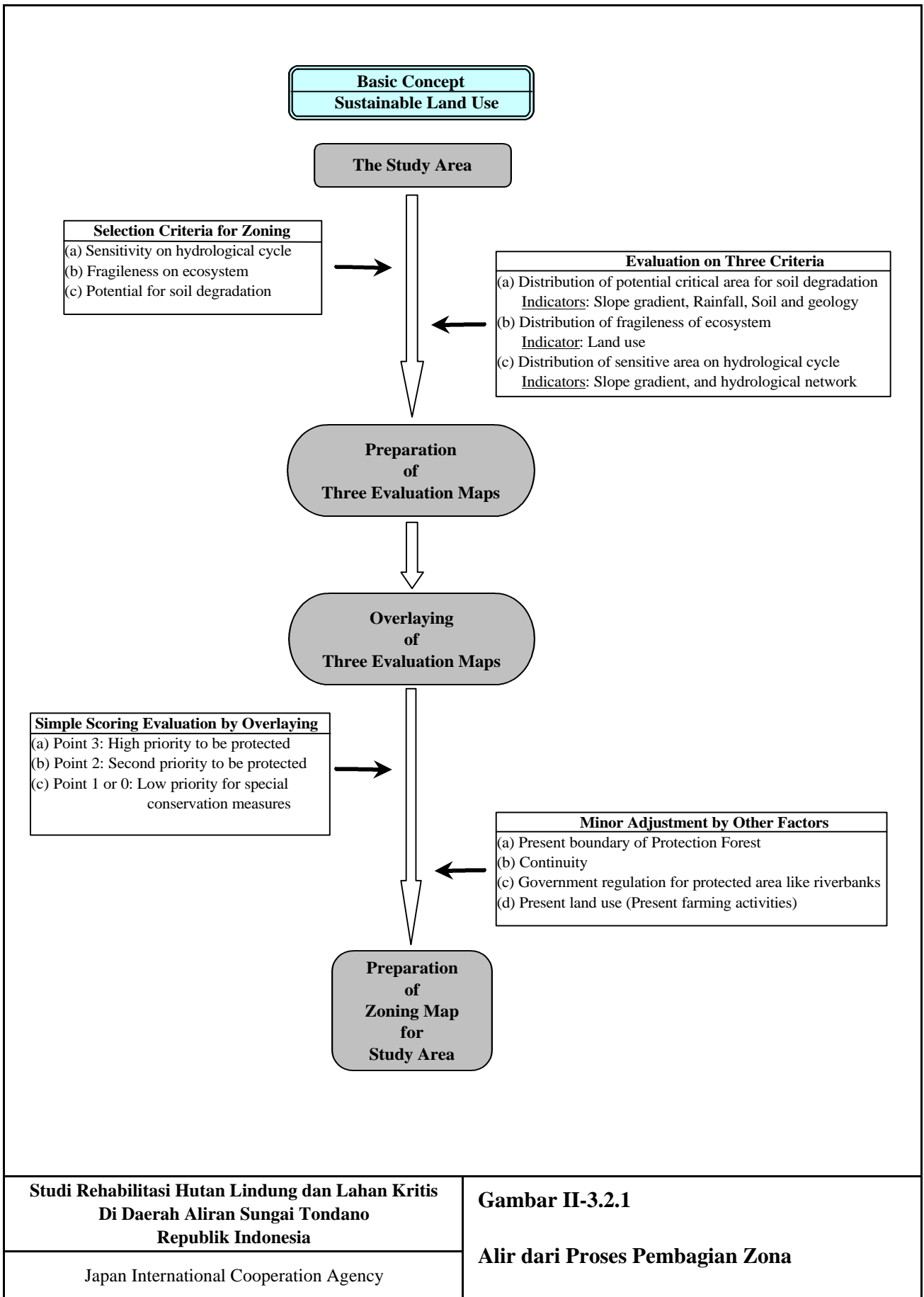


Note: As of January 2001

**Studi Rehabilitasi Hutan Lindung dan Lahan Kritis
Di Daerah Aliran Sungai Tondano
Republik Indonesia**

Japan International Cooperation Agency

**Gambar II-1.11.3
Struktur Organisasi Kantor Dinas Kehutanan
di Propinsi Sulawesi Utara dan Kabupaten
Minahasa**





Studi Rehabilitasi Hutan Lindung dan Lahan Kritis di Daerah Aliran Sungai Tondano Republik Indonesia

Gambar II-3.2.2 Wilayah Sensitif dalam Siklus Hidrologi (Wilayah Studi)

Japan International Cooperation Agency