

### 3) Soil Investigation



Photo No.15  
Point ①



Photo No.16  
Point ① Class IV

Photo No.17  
Concretion in impermeable layer





Photo No.18  
Point ② Soil Profile  
and View  
(Northeast of Potential  
Area)



Photo No.19  
Point② Soil Profile  
Land Suitability: Class II



Photo No.20  
Point③ Soil Profile  
Land Suitability: Class III



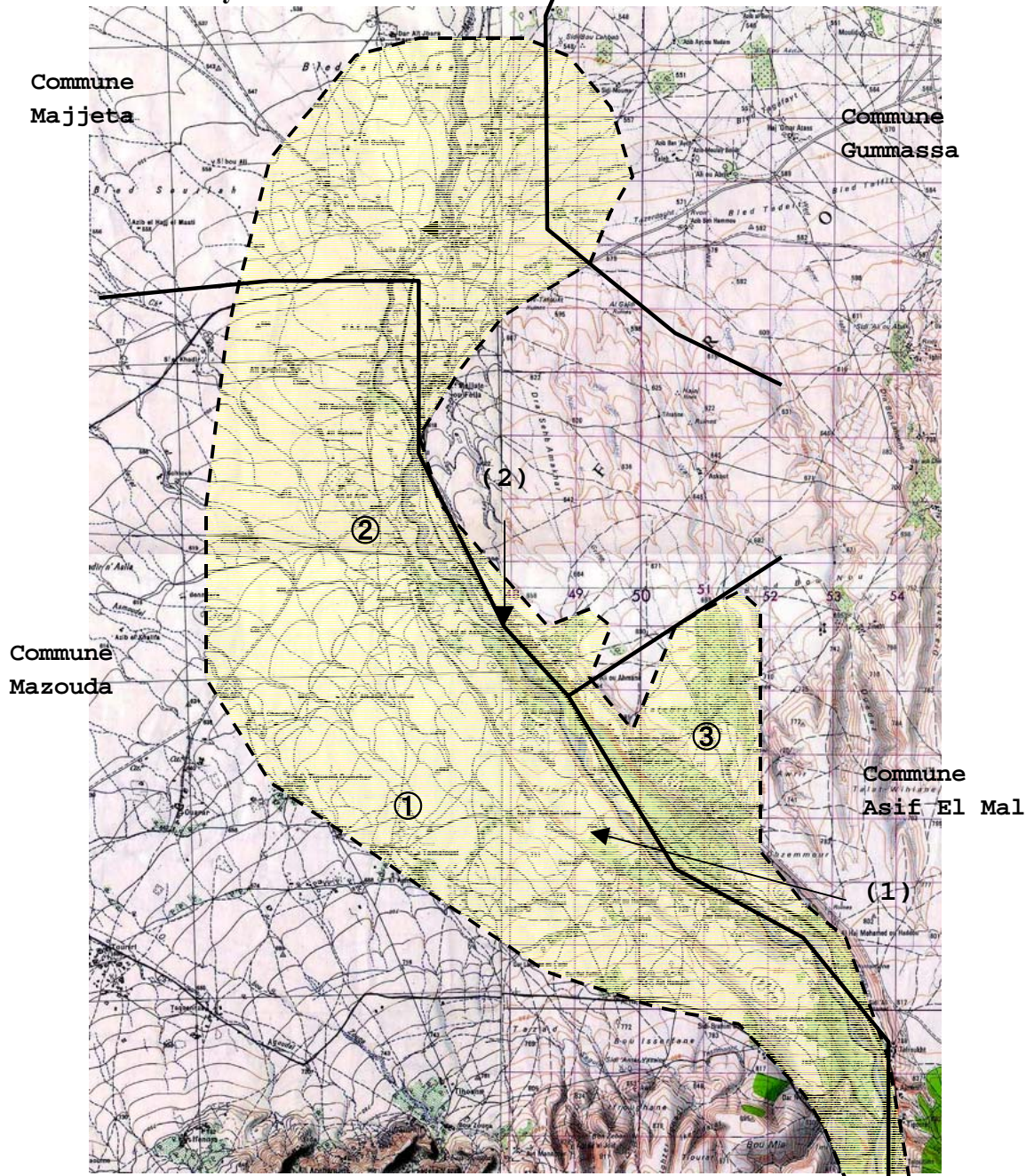
Photo No.21  
Point⑤ Soil Profile  
Land Suitability: Class III



Photo No.22  
Point⑤ Soil Profile  
Land Suitability: Class III

### (3) No.9 Taskourt

#### 1) Area of Soil Survey



--- Potential irrigated area

## 2) View of the Area



Photo No.23  
Agricultural Land on  
Left Bank of Asif El  
Mar River  
View from allow (1)  
on the Map



Photo No.24  
Cereal and Olive  
land on Alluvial  
Plain of Asif El  
Mar River  
View from allow  
(2) on the Map



Photo No.25  
Almond trees and  
cereal cultivation  
(Mixture cultivation)

### 3) Soil Investigation



Photo No.26  
Point①, Class III  
Sol a Sequioxydes de Fer



Photo No.27  
Point②, Class II  
Sols Peu Evolues



Photo No.28  
Point③, Class IV  
Calcimagnesiques  
Shallow Soil Depth