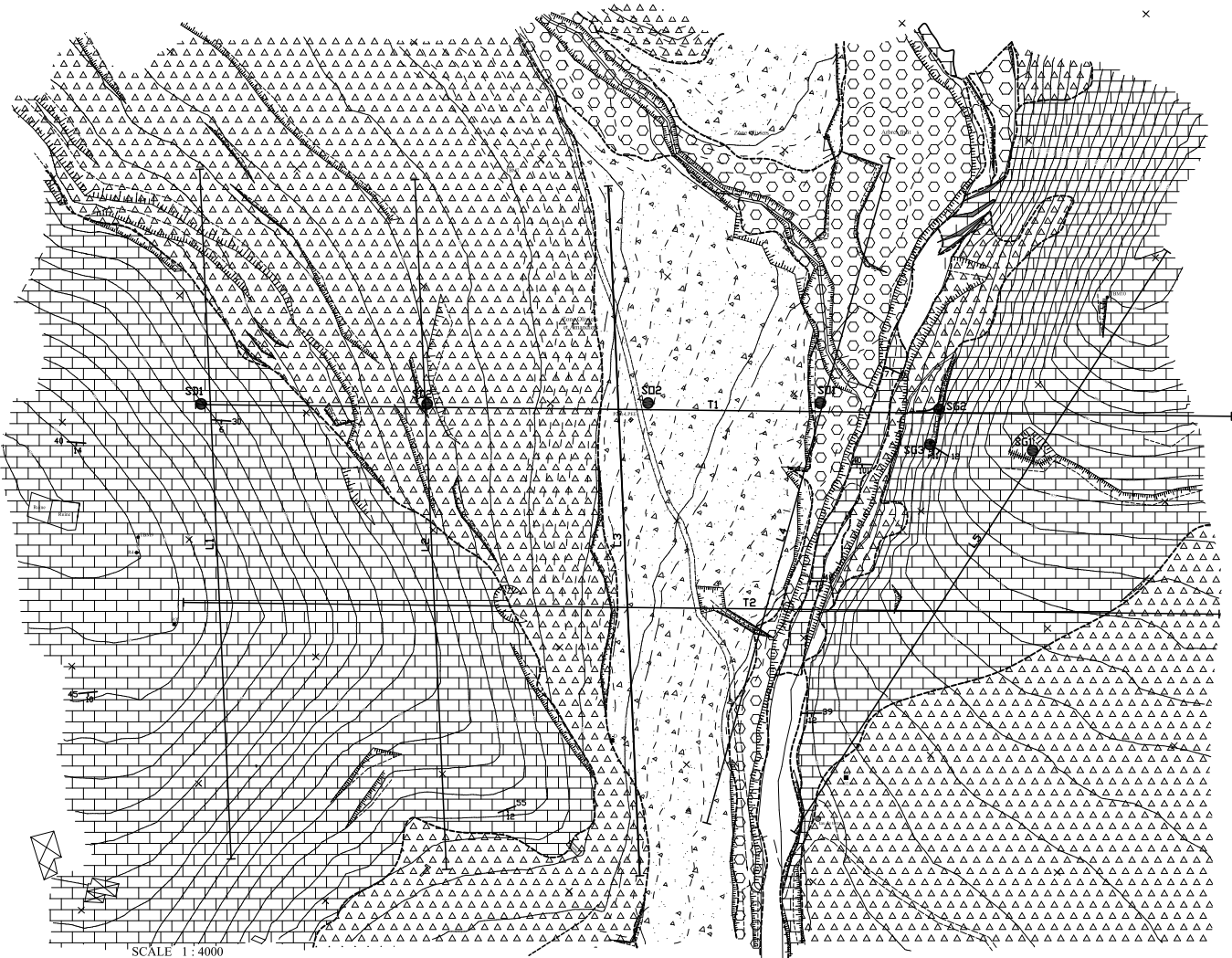
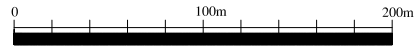


LEGENDE

	Present River deposits
	Alluvial Terrace deposits
	Colluvial deposits
	Terrace deposits covered by colluvium
	Alternation of Marl and Limestone
	Strike & dip of Bedding plane
	Geologic Boundary
	Seismic Prospecting Line
	Drilling Point



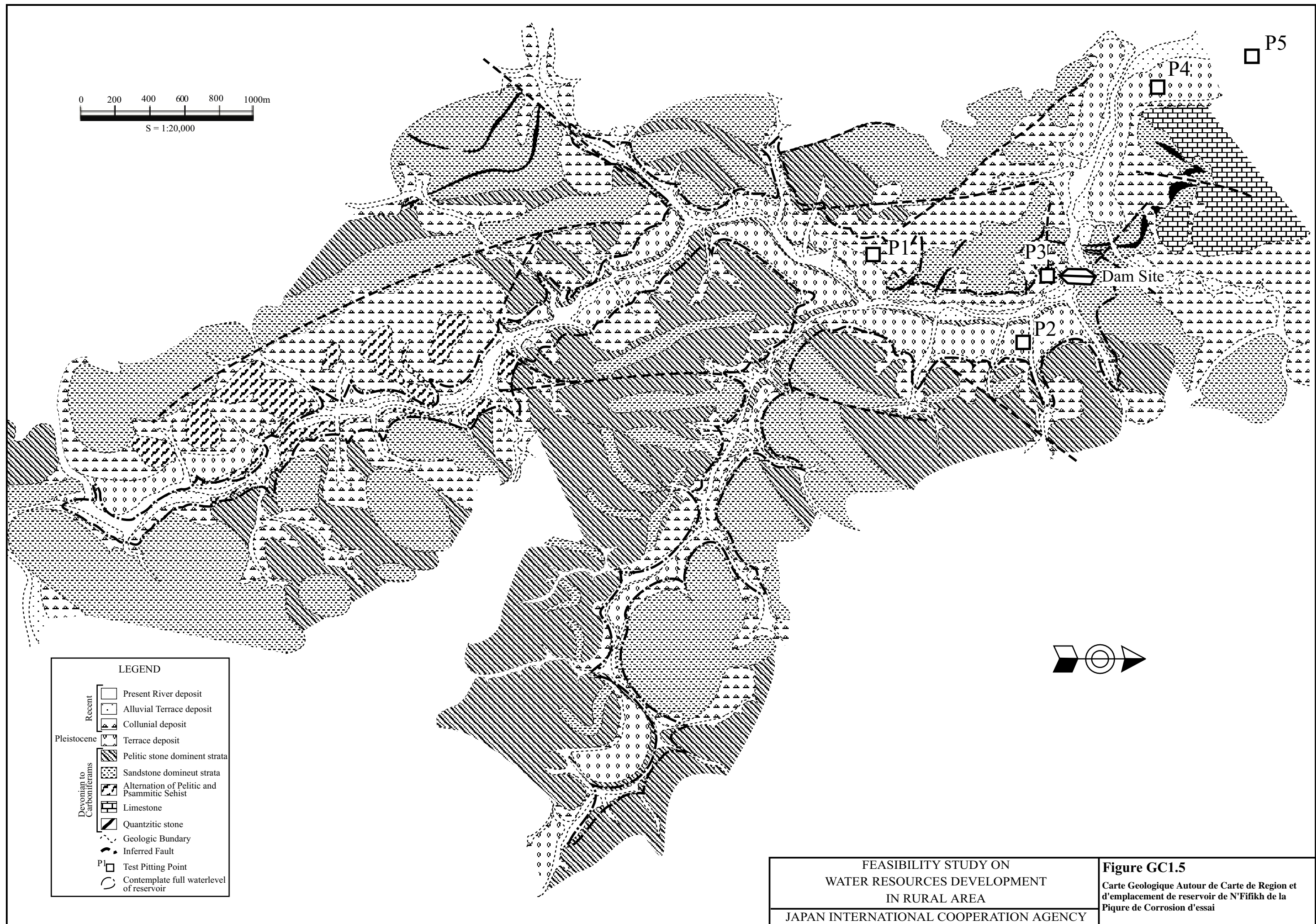
SCALE 1:4000

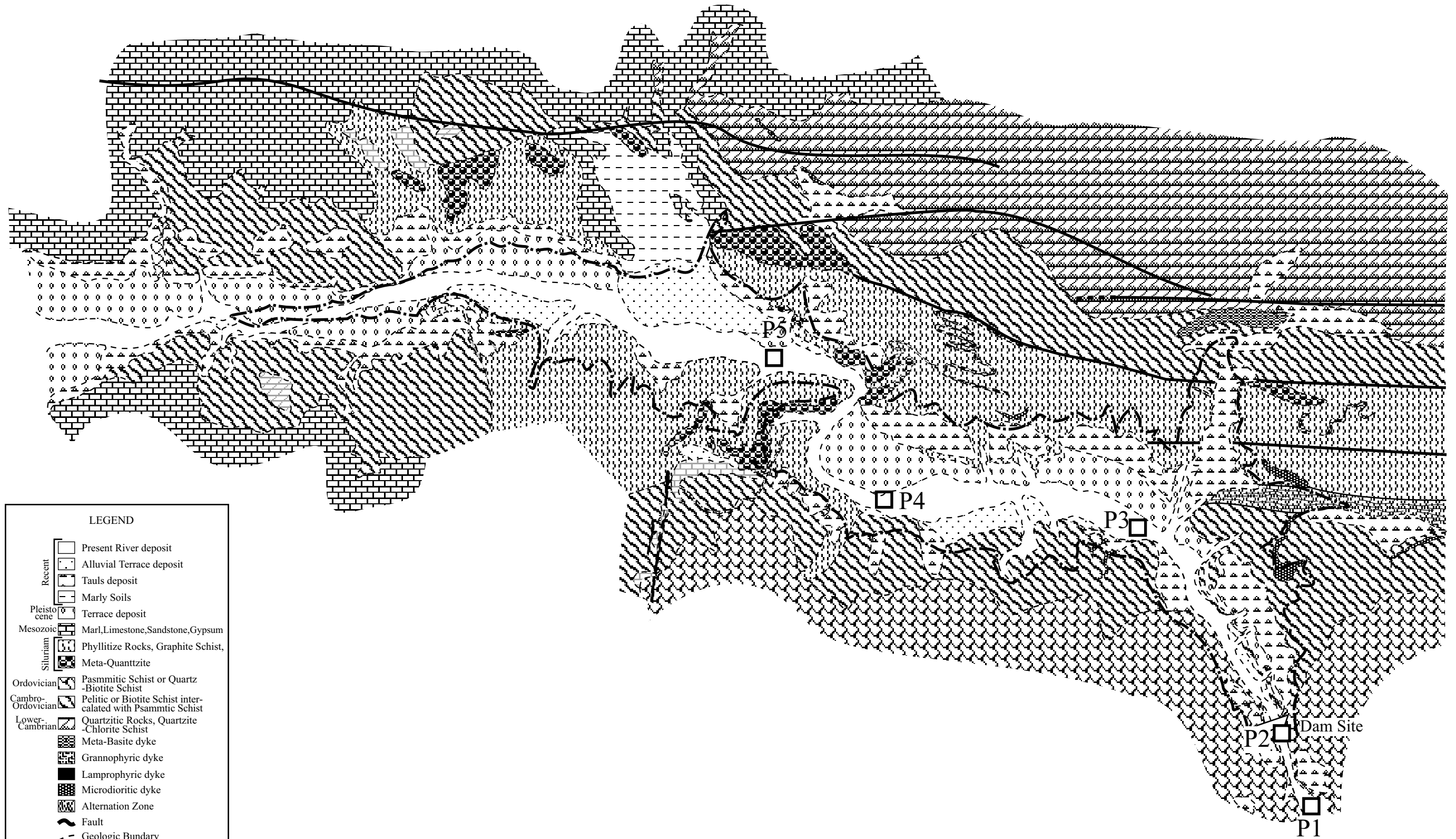
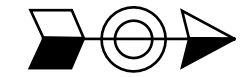
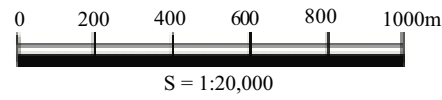


FEASIBILITY STUDY ON
WATER RESOURCES DEVELOPMENT
IN RURAL AREA
JAPAN INTERNATIONAL COOPERATION AGENCY

Figure GC1.4
Geological Map around Azghar Dam Site
& Location Map of Drilling and Seismic
Prospecting

GC1-4





LEGEND	
Recent	Present River deposit
	Alluvial Terrace deposit
	Talus deposit
	Marly Soils
Pleistocene	Terrace deposit
Mesozoic	Marl, Limestone, Sandstone, Gypsum
Silurian	Phyllitite Rocks, Graphite Schist,
	Meta-Quartzite
Ordovician	Pasmmitic Schist or Quartz-Biotite Schist
Cambro-Ordovician	Pelitic or Biotite Schist intercalated with Pasmmitic Schist
Lower-Cambrian	Quartzitic Rocks, Quartzite-Chlorite Schist
	Meta-Basite dyke
	Grannophyric dyke
	Lamprophyric dyke
	Microdioritic dyke
	Alternation Zone
	Fault
	Geologic Boundary
P1 □	Test Pitting Point
○	Contemplate full waterlevel of reservoir

FEASIBILITY STUDY ON
WATER RESOURCES DEVELOPMENT
IN RURAL AREA
JAPAN INTERNATIONAL COOPERATION AGENCY

Figure GC1.6
Carte Geologique Autour de Carte de Region
et d'emplacement de reservoir de Taskourt
de la Figure de Corrosion d'essai



GC1-7

P4

P5 is located at outlet from mountain area on oued Darya
(5~6km SE from Dam site)

FEASIBILITY STUDY ON
 WATER RESOURCES DEVELOPMENT
 IN RURAL AREA
 JAPAN INTERNATIONAL COOPERATION AGENCY

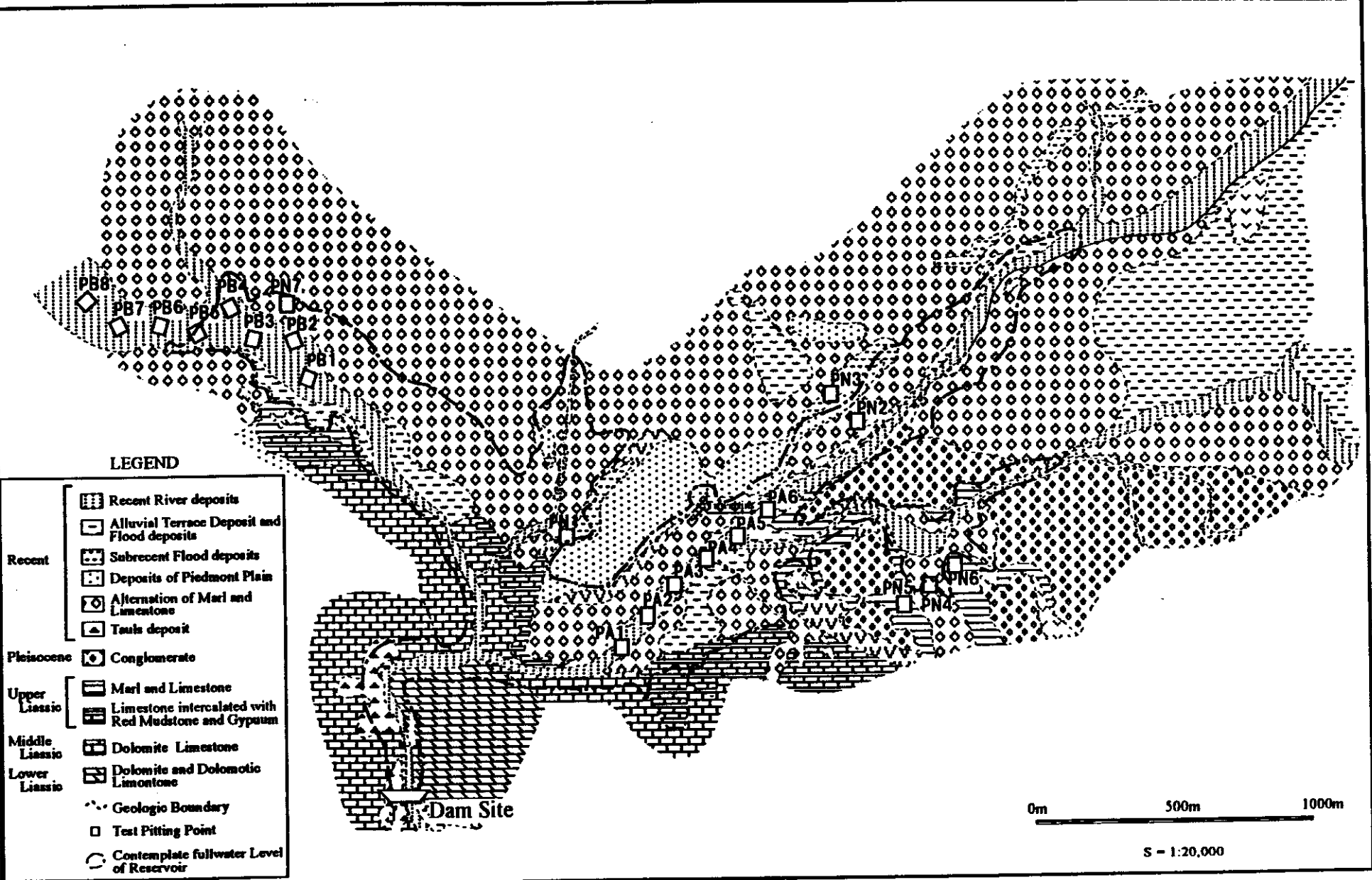


Figure GC1.8
 Carte Géologique Autour de Carte de Région
 et d'emplacement de réservoir de Azgar de
 la Région de Corrosion d'essai