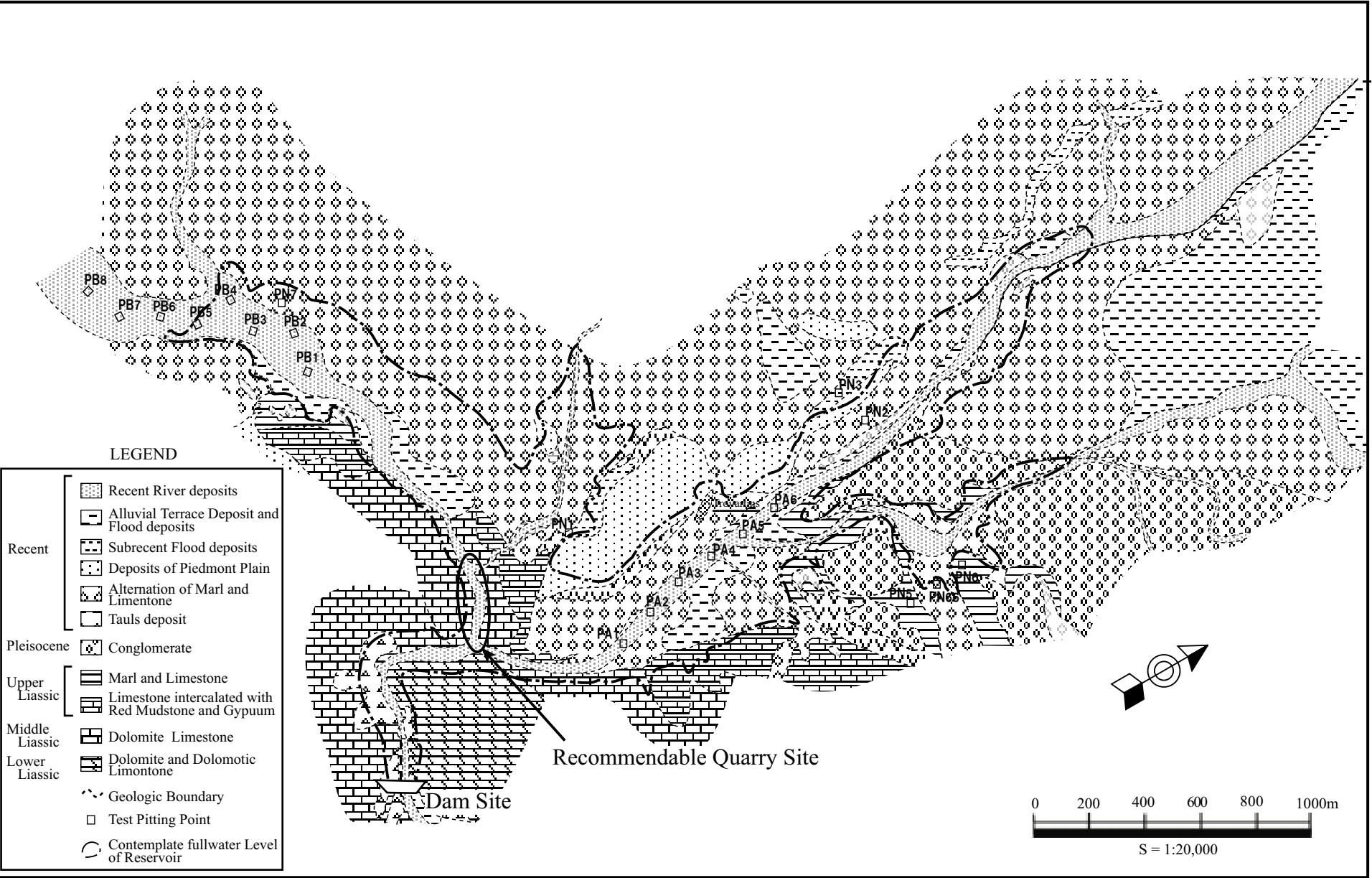
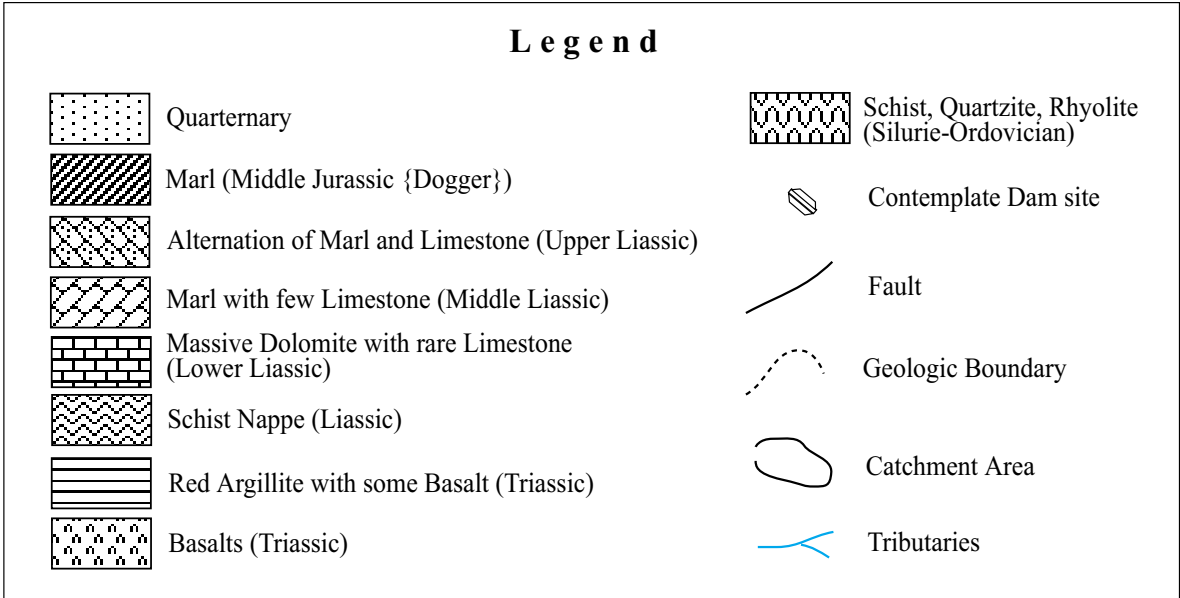
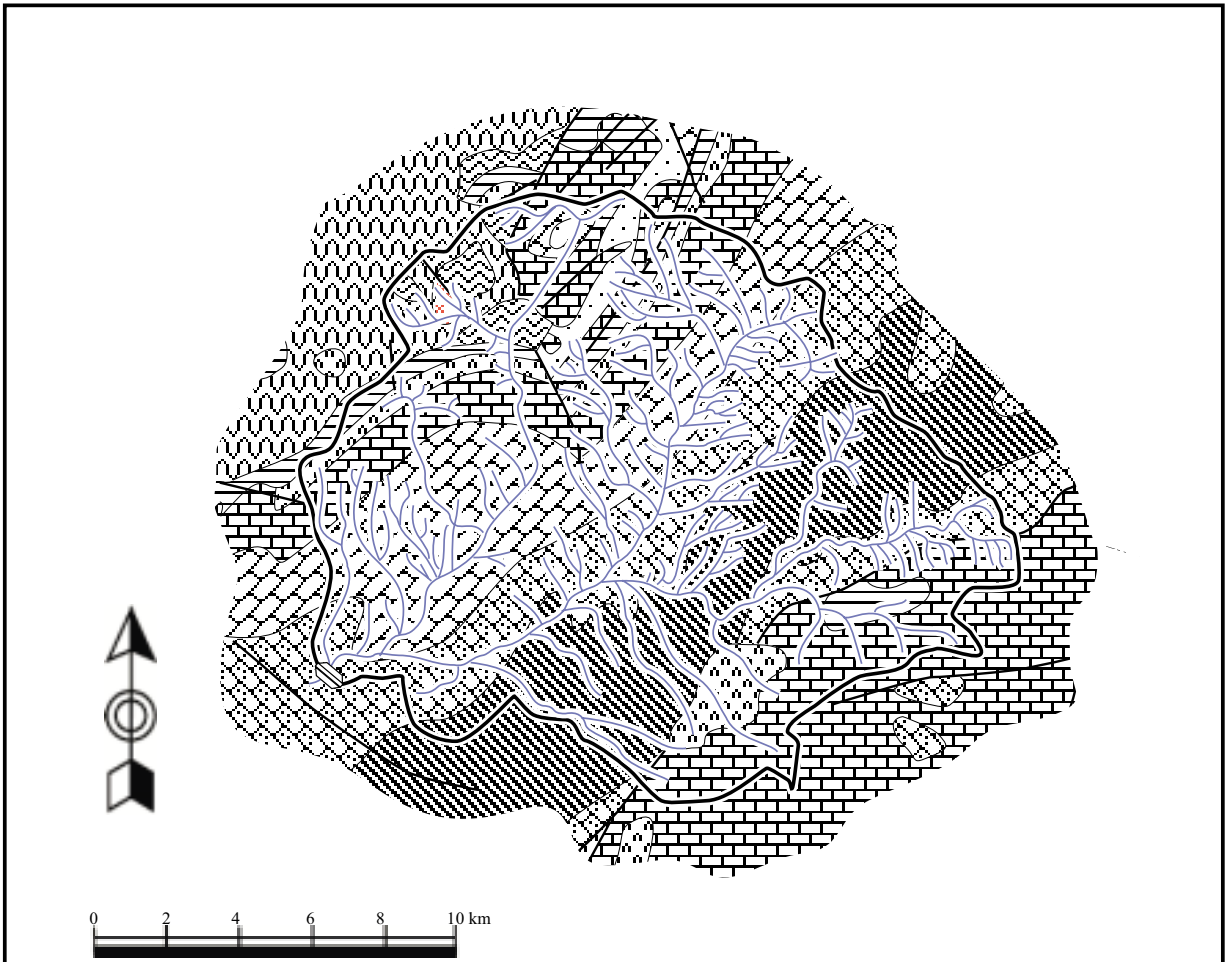


FEASIBILITY STUDY ON  
WATER RESOURCES DEVELOPMENT  
IN RURAL AREA

Figure X.2.3.6  
Design Quarry Site for  
Tinkit Dam





FEASIBILITY STUDY ON  
WATER RESOURCES DEVELOPMENT  
IN RURAL AREA

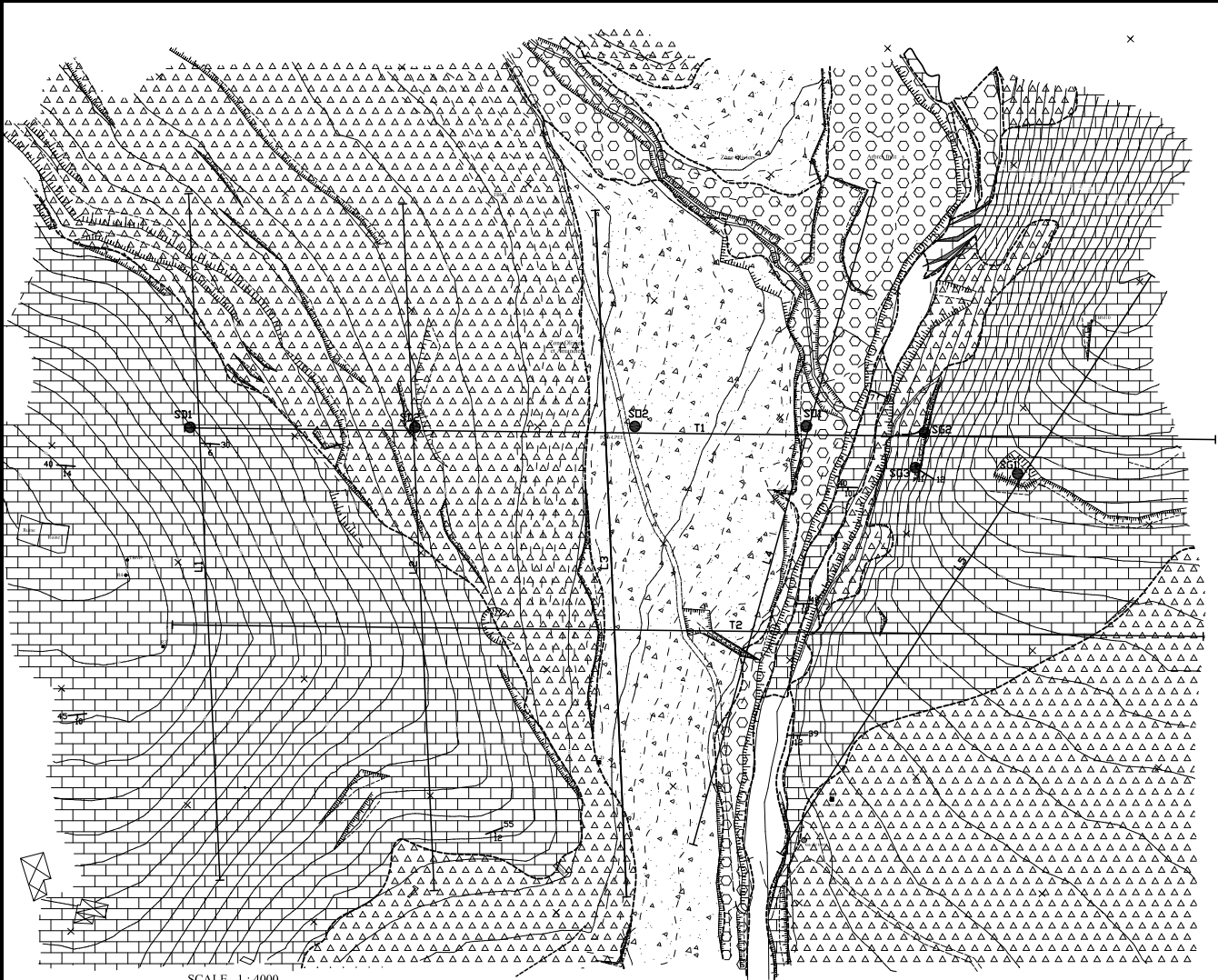
JAPAN INTERNATIONAL COOPERATION AGENCY

**Figure X2.4.1**  
**Geological Map around Catchment Area of Azghar Dam**



LEGENDE

	Present River deposits
	Alluvial Terrace deposits
	Colluvial deposits
	Terrace deposits covered by colluvium
	Alternation of Marl and Limestone
	Strike & dip of Bedding plane
	Geologic Boundary
	Seismic Prospecting Line
	Drilling Point



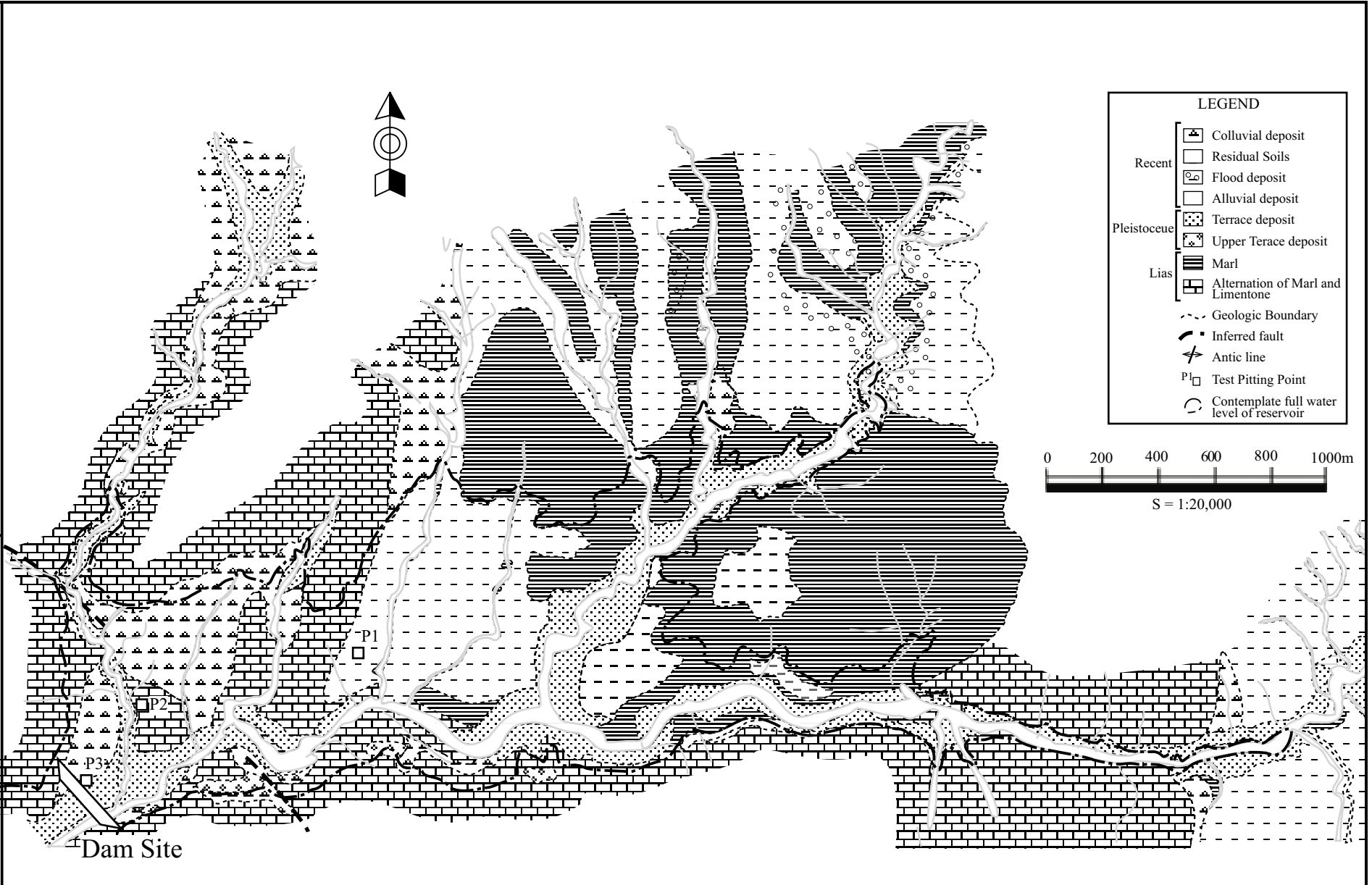
SCALE 1 : 4000  
0 100m 200m

FEASIBILITY STUDY ON  
WATER RESOURCES DEVELOPMENT  
IN RURAL AREA

JAPAN INTERNATIONAL COOPERATION AGENCY

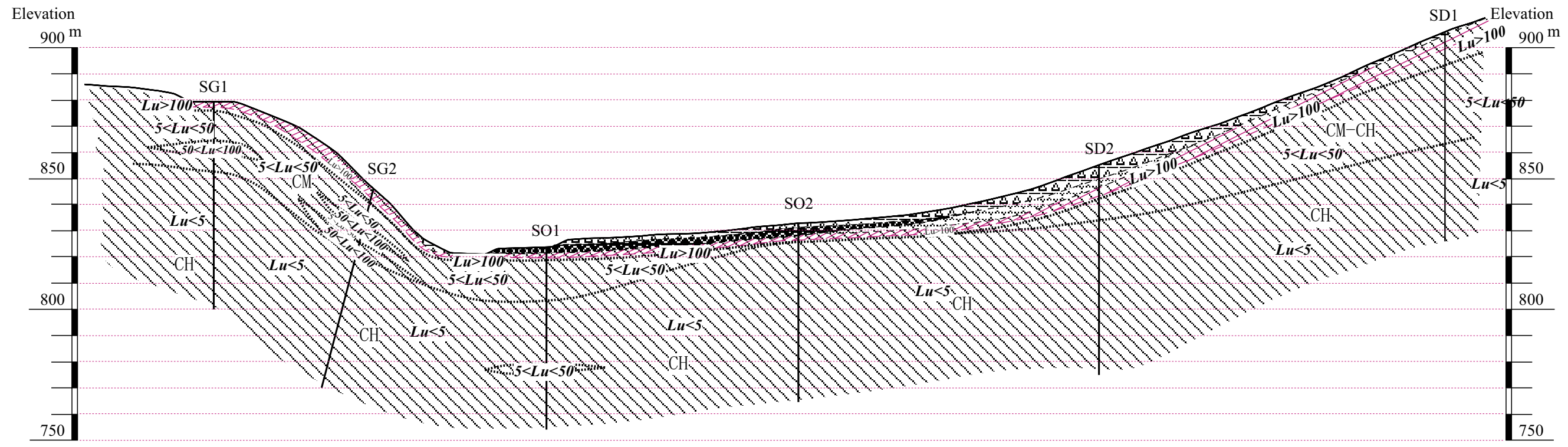
Figure X2.4.2  
Geological Map around Azghar Dam  
Site & Location Map of Drilling and  
Seismic Prospecting

Figure X2.4.3  
Geological Map around Reservoir  
Area of Azghar Dam




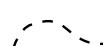




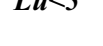



□P4

P5 is located at outlet from mountain area on oued Qarya  
(5~6km SE from Dam site)

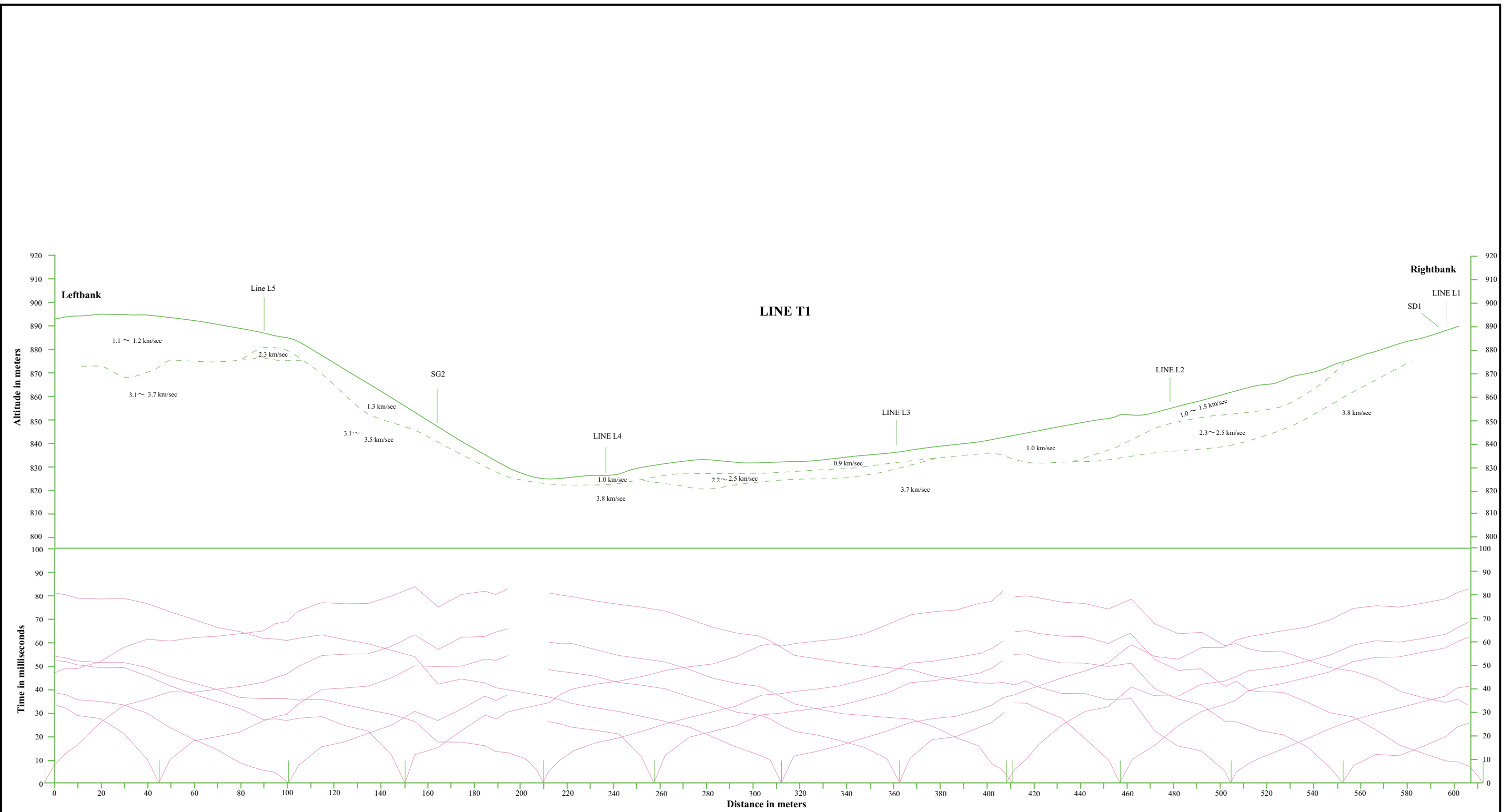


LEGEND

-  Terrace deposits
-  Colluvial deposits
-  Alternation of Marl and Limestone
-  Geological Boundary
-  SD1  
Drilling Location and their Numbers
-  Area of CL Rock Classe
-  CM-CH Rock Classes
-  Boundary of Rock Classes
-  Lu < 5 Lugeon Units of Bedrock
-  Boundary of Lugeon Units

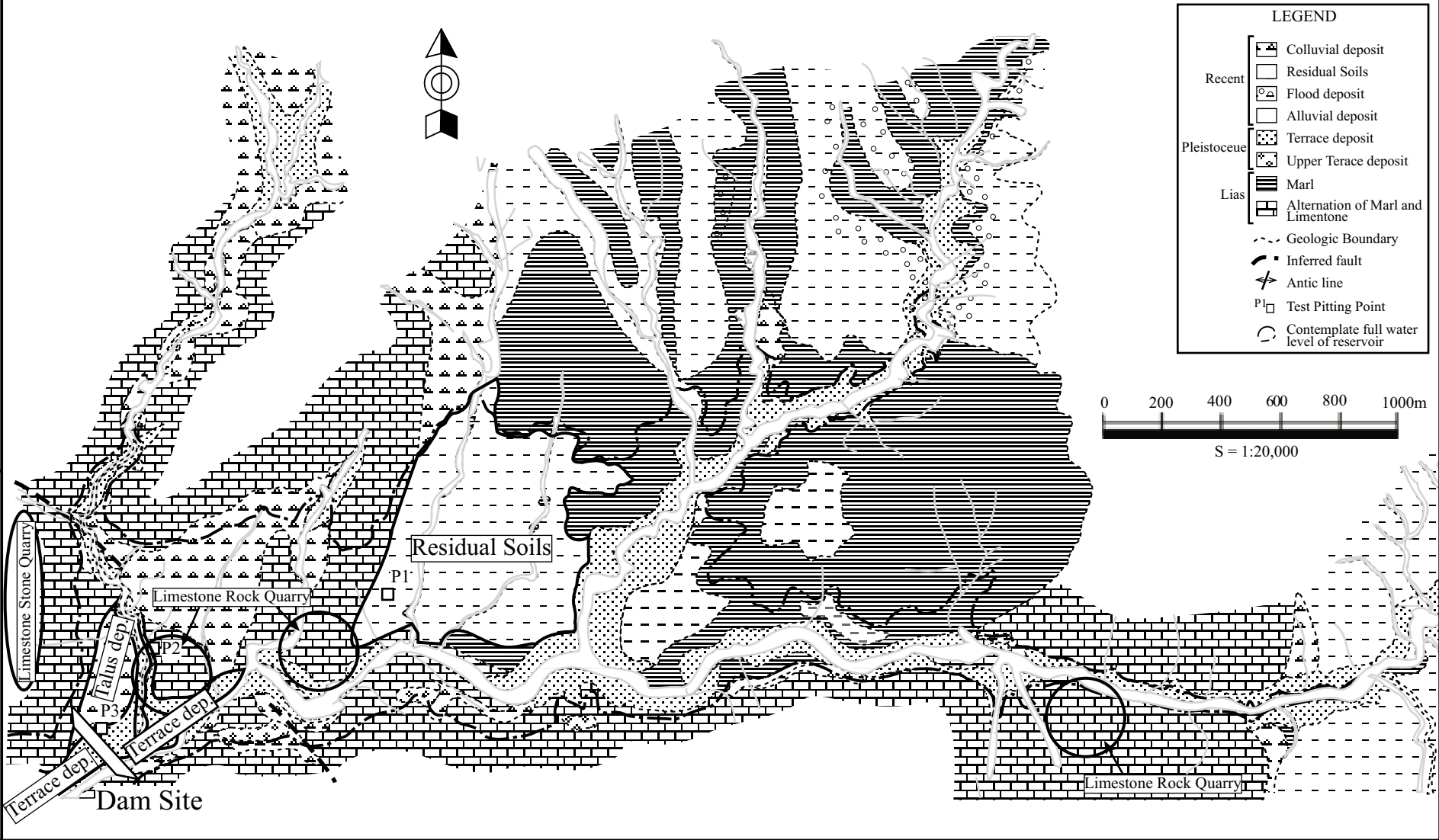
FEASIBILITY STUDY ON  
WATER RESOURCES DEVELOPMENT  
IN RURAL AREA  
JAPAN INTERNATIONAL COOPERATION AGENCY

Figure X2.4.4  
Geological Profile along  
Contemplate Azghar Dam Axis



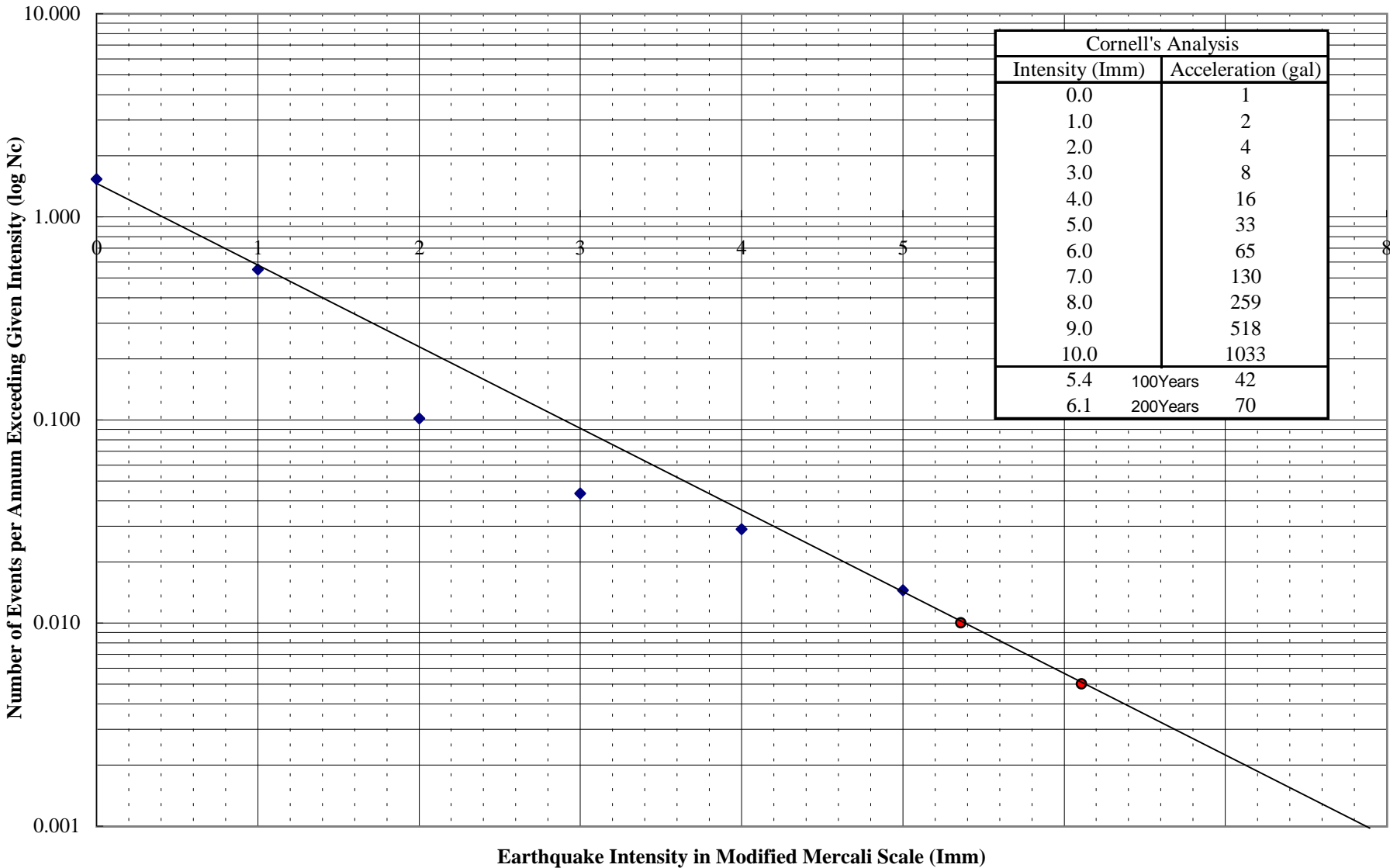
FEASIBILITY STUDY ON  
 WATER RESOURCES DEVELOPMENT  
 IN RURAL AREA  
 JAPAN INTERNATIONAL COOPERATION AGENCY

**Figure X2.4.5**  
**Profile of Seismic Velocity Distribution**  
**along Contemplate Azghar Dam Axis**

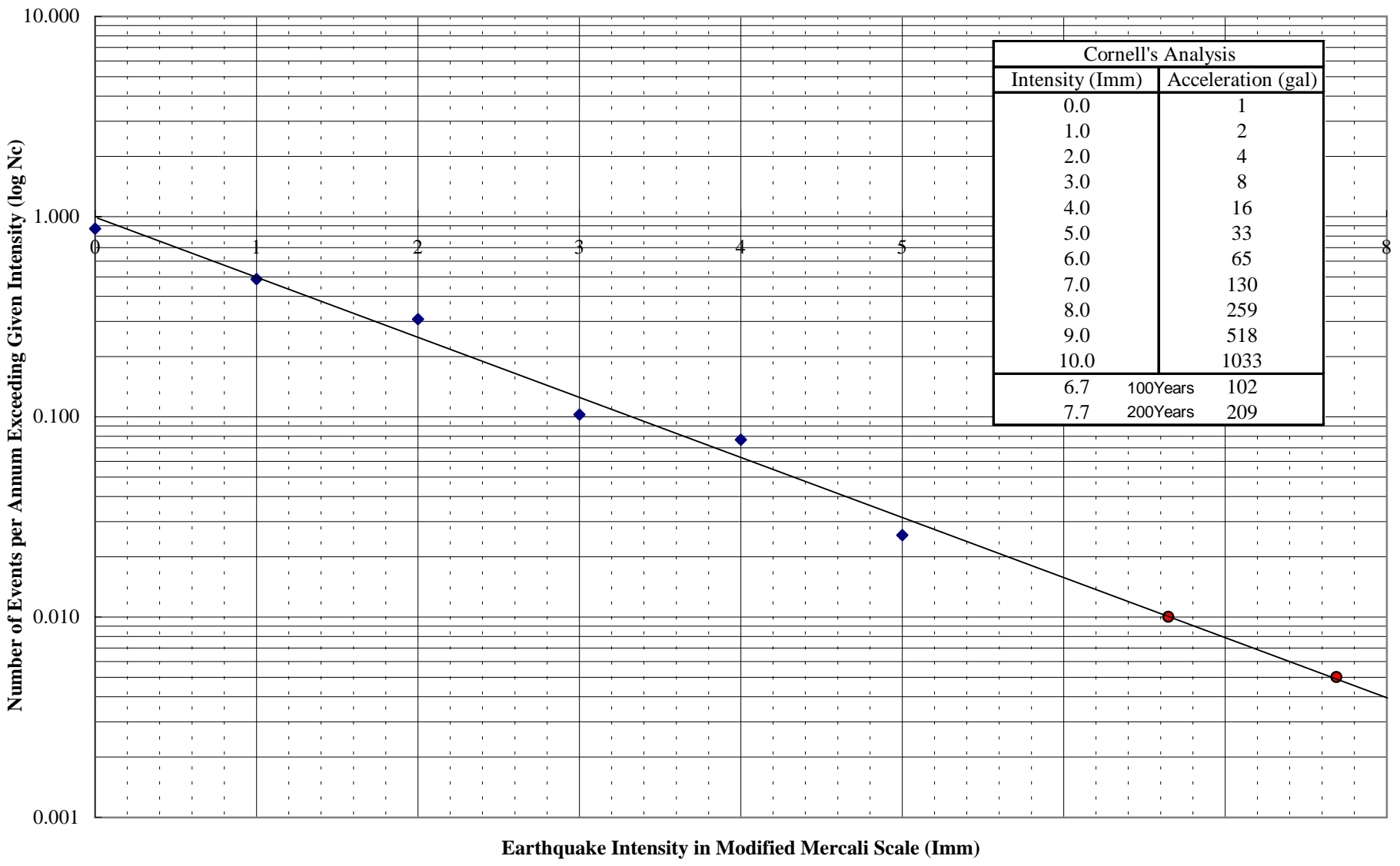


□P4

P5 is located at outlet from mountain area on oued Qarya  
(5~6km SE from Dam site)







**Figure X3.3**  
**Relationship between Earthquake**  
**Intensity and Frequency at Timkit**  
**Dam Site**

