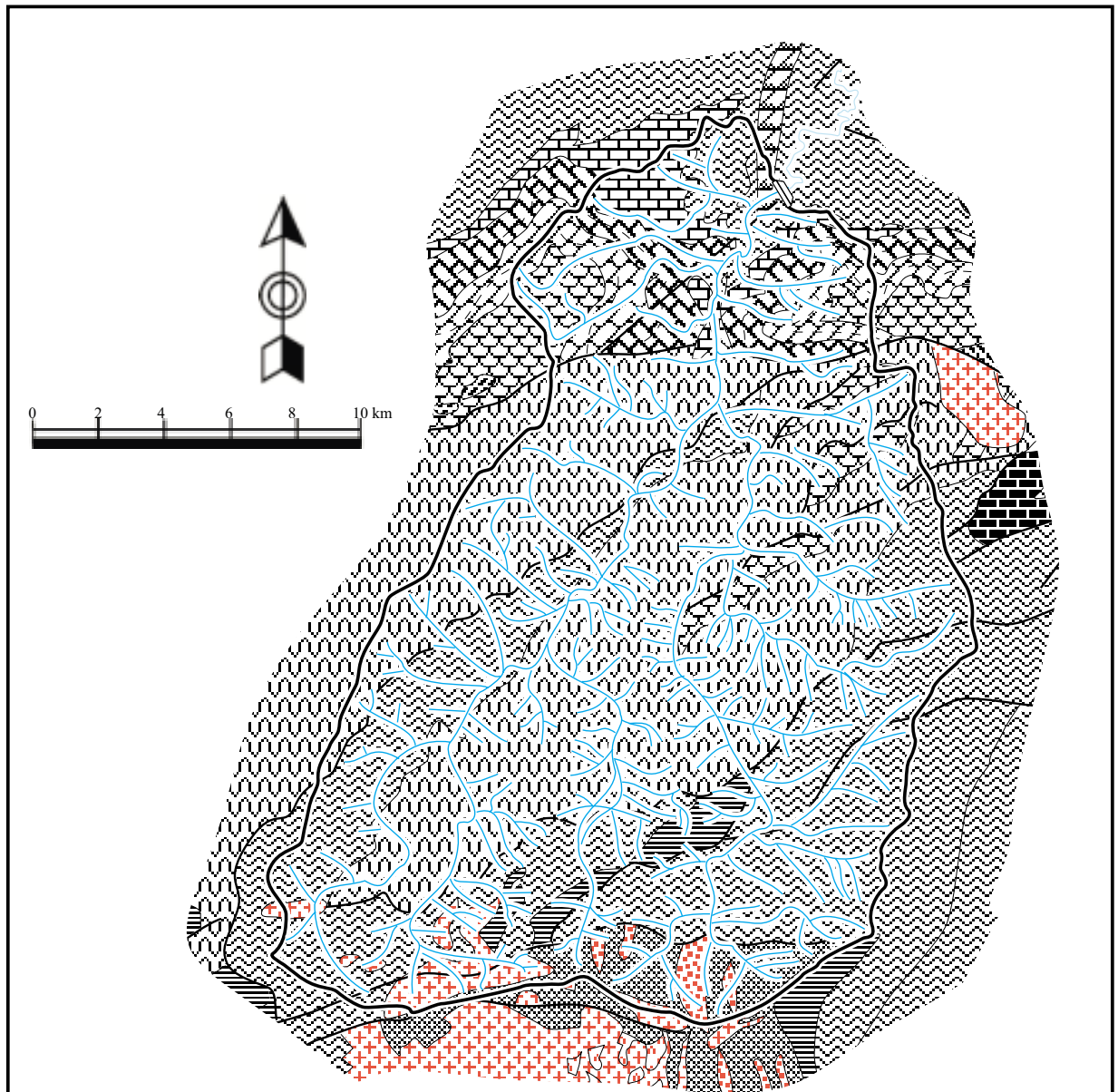


LEGEND	
Recent	Present River deposit
	Alluvial Terrace deposit
	Colluvial deposit
Pleistocene	Terrace deposit
	Pelitic stone dominant strata
	Sandstone dominant strata
	Alternation of Pelitic and Psammitic Schist
Devonian to Carboniferous	Limestone
	Quartzitic stone
	Geologic Boundary
	Inferred Fault
P1	Test Pitting Point
	Contemplate full waterlevel of reservoir

FEASIBILITY STUDY ON
WATER RESOURCES DEVELOPMENT
IN RURAL AREA
JAPAN INTERNATIONAL COOPERATION AGENCY

Figure X.2.1.6
Design Borrow Area and Quarry Site for N'Fifikh Dam



Legend

	Marl & Calcarenite (Eocene)		Schist, Quartzite (Cambrian-Ordovician)
	Marl, Sandstone with Marl, Gypsum (Upper Cretaceous)		Limestone (Cambrian)
	Limestone & Marl with Anhydrite (Middle Cretaceous)		Schist (Lower Cambrian)
	Marl & Limestone or Dolomite, Sandstone (Lower Cretaceous)		Contemplate Dam site
	Conglomerate, Sandstone, Sandy Limestone with Gypsum (Jura-Cretaceous)		Fault
	Hercynian Granite		Geologic Boundary
	Migmatite, Contact Metamorphic Rocks		Catchment Area
	Pelitic Schist, Sandstone & Conglomerate (Silurian-Devonian)		Tributaries
	Schist with Quartzite Bar (Silurian)		

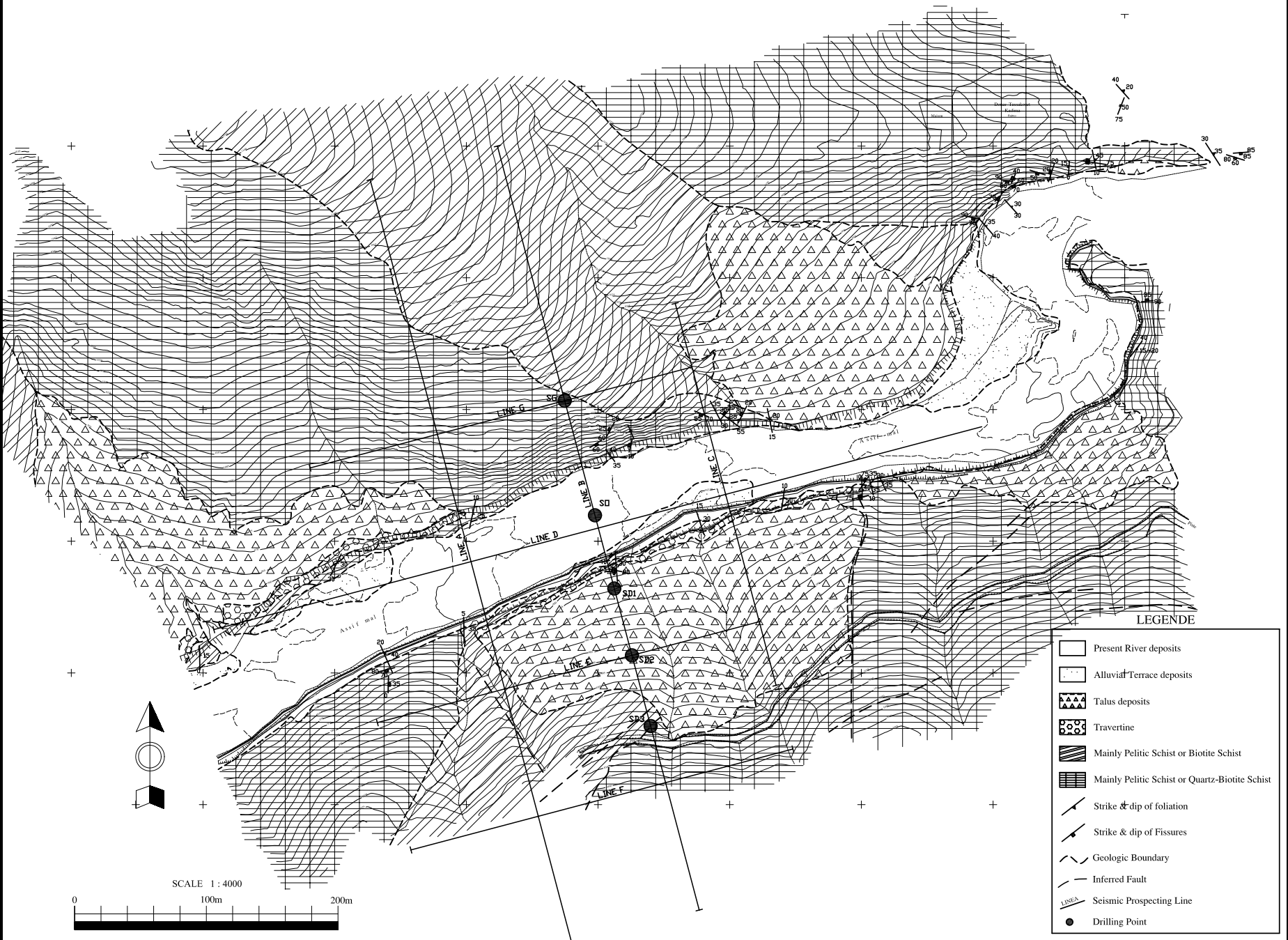
FEASIBILITY STUDY ON
WATER RESOURCES DEVELOPMENT
IN RURAL AREA

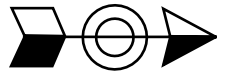
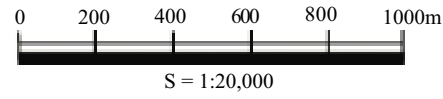
JAPAN INTERNATIONAL COOPERATION AGENCY

Figure X2.2.1

Geological Map around Catchment Area of Taskourt Dam

Figure X2.2.2
 Geological Map around Taskourt Dam Site &
 Location Map of Drilling and Seismic
 Prospecting

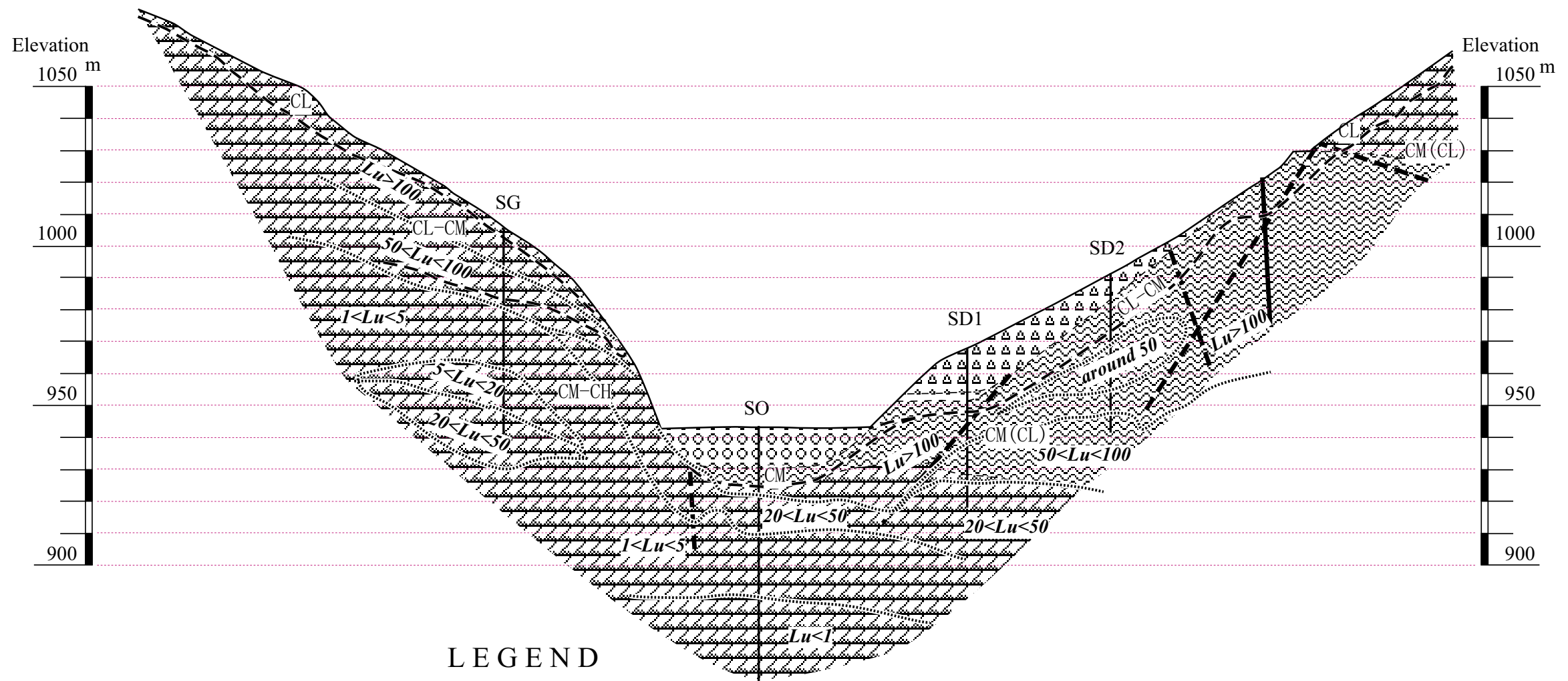













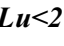


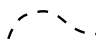
LEGEND	
Recent	Present River deposit
	Alluvial Terrace deposit
	Talus deposit
	Marly Soils
Pleistocene	Terrace deposit
Mesozoic	Marl, Limestone, Sandstone, Gypsum
Silurian	Phyllite Rocks, Graphite Schist,
	Meta-Quartzite
Ordovician	Pasmmitic Schist or Quartz-Biotite Schist
Cambro-Ordovician	Pelitic or Biotite Schist intercalated with Pasmmitic Schist
Lower-Cambrian	Quartzitic Rocks, Quartzite-Chlorite Schist
	Meta-Basite dyke
	Grannophyric dyke
	Lamprophyric dyke
	Microdioritic dyke
	Alternation Zone
	Fault
	Geologic Boundary
	P1 □ Test Pitting Point
	Contemplate full waterlevel of reservoir

FEASIBILITY STUDY ON
WATER RESOURCES DEVELOPMENT
IN RURAL AREA
JAPAN INTERNATIONAL COOPERATION AGENCY

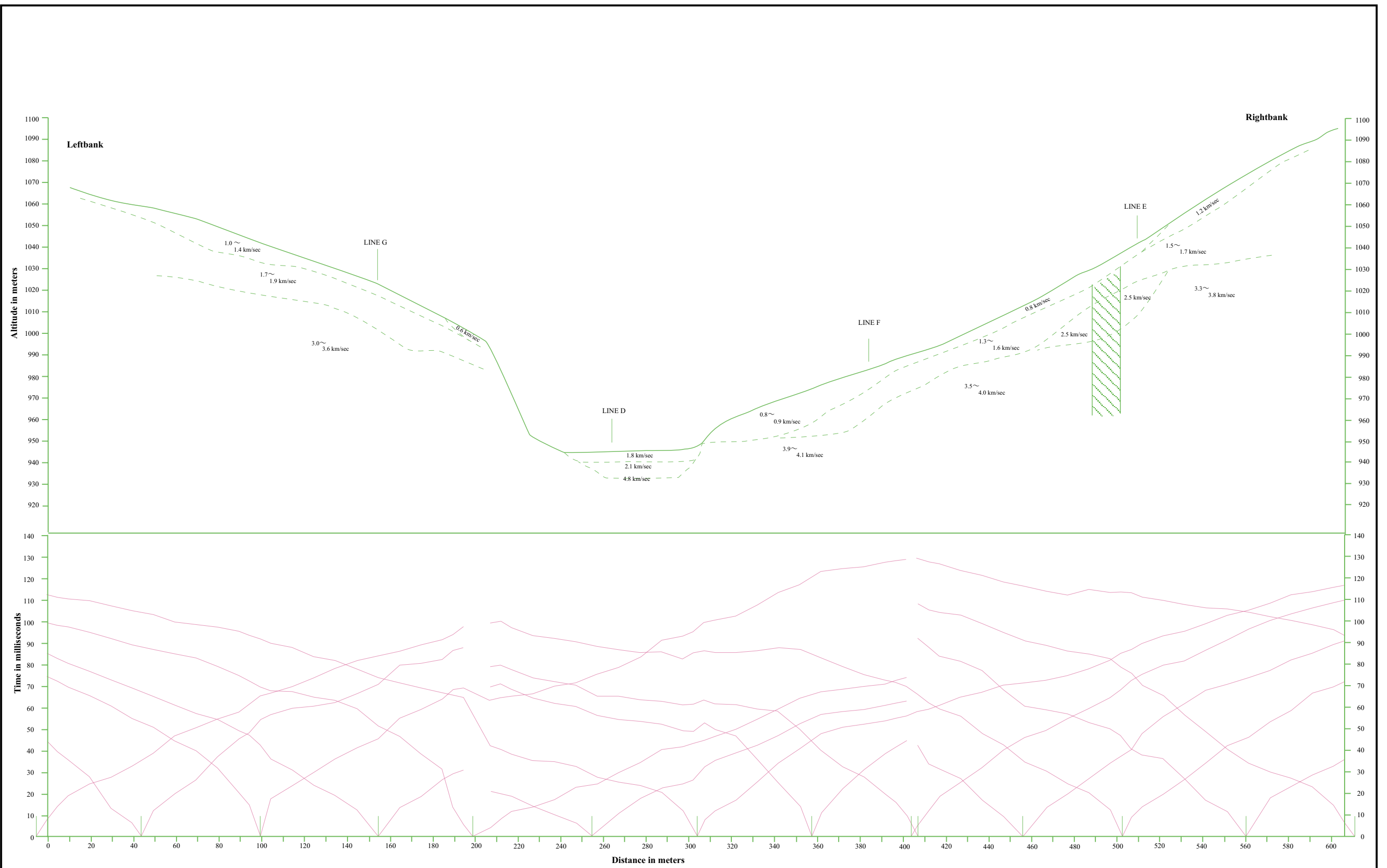
Figure X.2.2.3
Geological Map around Reservoir
Area of Taskourt Dam & Location
Map of Test Pitting

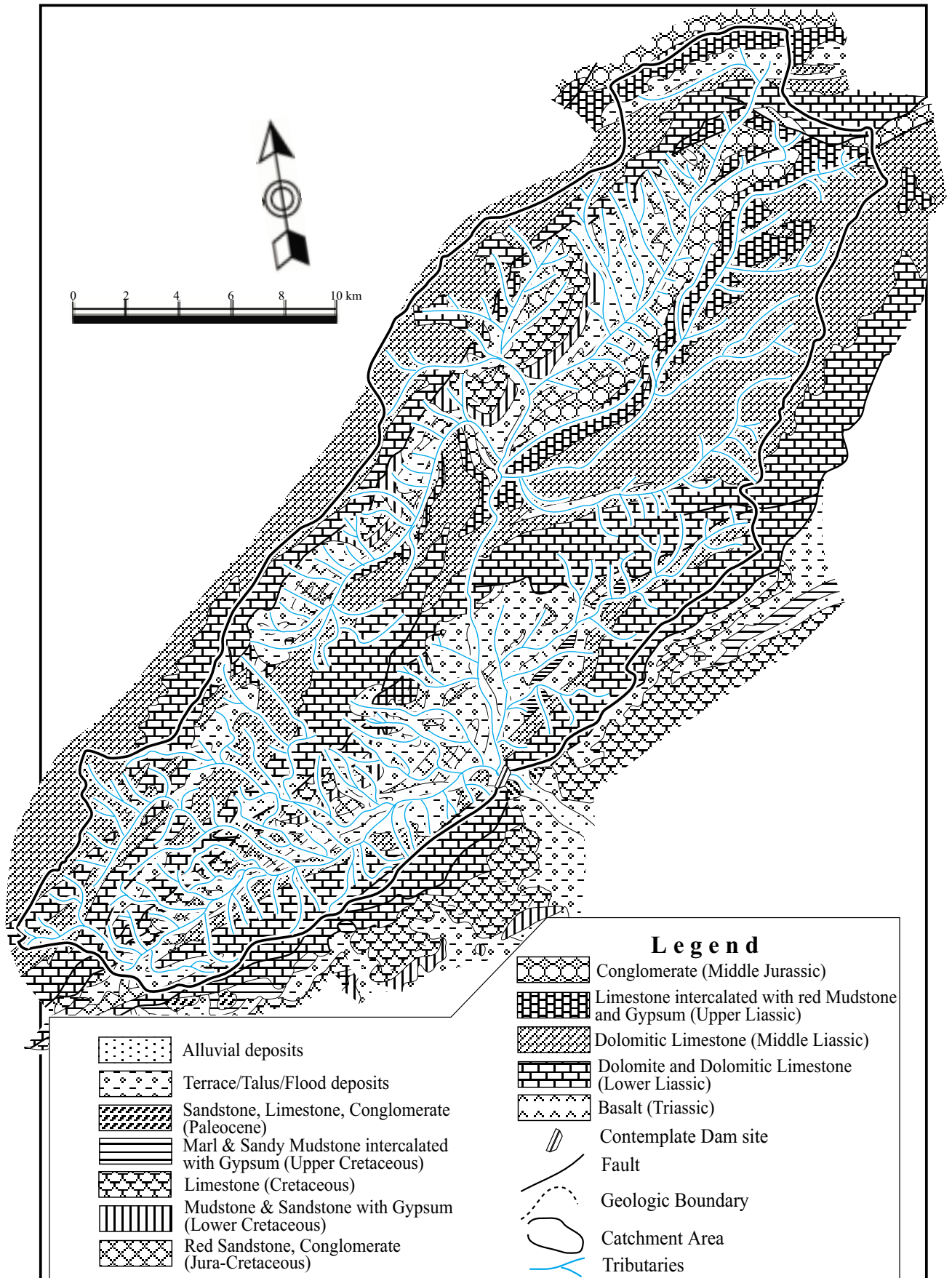


LEGEND

- | | | | |
|---|---|---|-------------------------------------|
|  | River deposits |  | CM-CH Rock Classes |
|  | Terrace deposits |  | Boundary of Rock Classes |
|  | Colluvial deposits |  | SD1 |
|  | Psammitic Schist or Quartz-Biotite Schist |  | Drilling Location and their Numbers |
|  | Pelitic Schist or Biotite Schist |  | $Lu < 2$ Lugeon Units of Bedrock |
|  | Inferred Faults |  | Boundary of Lugeon Units |
|  | Geological Boundary | | |

FEASIBILITY STUDY ON WATER RESOURCES DEVELOPMENT IN RURAL AREA	Figure X2.2.4 Geological Profile along Contemplate Taskourt Dam Axis
JAPAN INTERNATIONAL COOPERATION AGENCY	





FEASIBILITY STUDY ON
 WATER RESOURCES DEVELOPMENT
 IN RURAL AREA
 JAPAN INTERNATIONAL COOPERATION AGENCY

Figure X2.3.1
Geological Map around Catchment Area of Timkit Dam