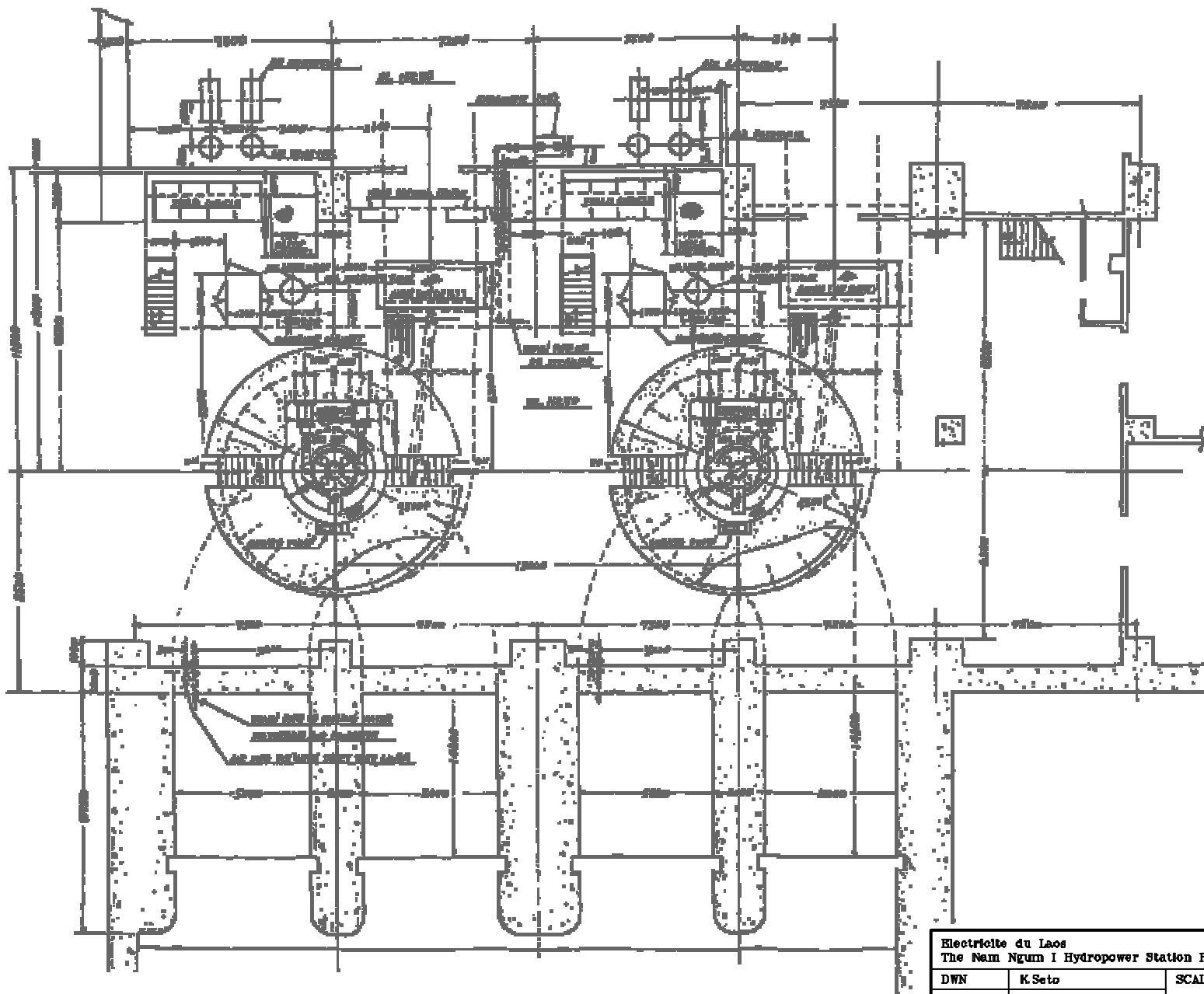


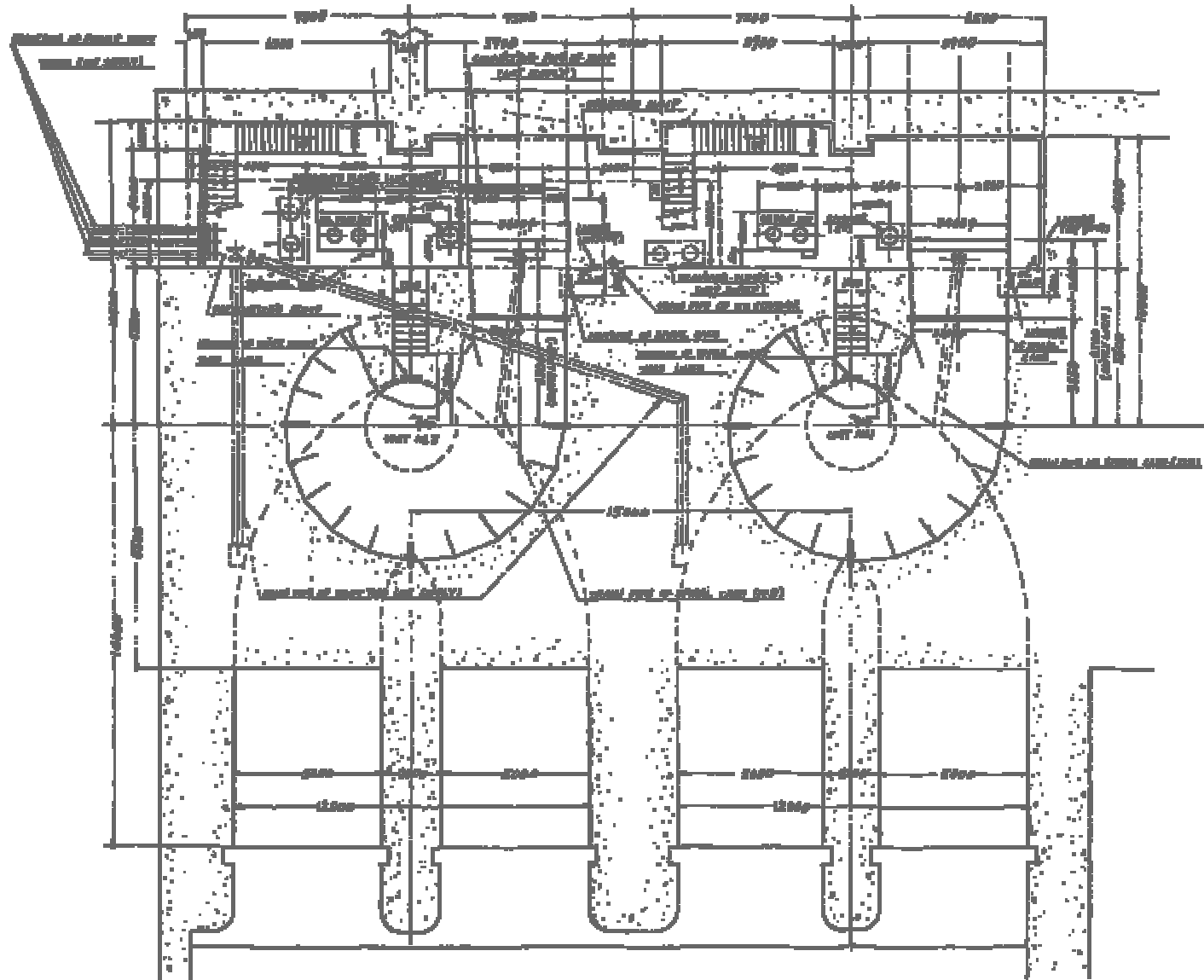
1. 1/2号水車断面図
 2. 1/2号水車断面図
 3. 1/2号水車断面図
 4. 1/2号水車断面図
 5. 1/2号水車断面図
 6. 1/2号水車断面図
 7. 1/2号水車断面図
 8. 1/2号水車断面図
 9. 1/2号水車断面図
 10. 1/2号水車断面図
 11. 1/2号水車断面図
 12. 1/2号水車断面図
 13. 1/2号水車断面図
 14. 1/2号水車断面図
 15. 1/2号水車断面図
 16. 1/2号水車断面図
 17. 1/2号水車断面図
 18. 1/2号水車断面図
 19. 1/2号水車断面図
 20. 1/2号水車断面図
 21. 1/2号水車断面図
 22. 1/2号水車断面図
 23. 1/2号水車断面図
 24. 1/2号水車断面図
 25. 1/2号水車断面図
 26. 1/2号水車断面図
 27. 1/2号水車断面図
 28. 1/2号水車断面図
 29. 1/2号水車断面図
 30. 1/2号水車断面図
 31. 1/2号水車断面図
 32. 1/2号水車断面図
 33. 1/2号水車断面図
 34. 1/2号水車断面図
 35. 1/2号水車断面図
 36. 1/2号水車断面図
 37. 1/2号水車断面図
 38. 1/2号水車断面図
 39. 1/2号水車断面図
 40. 1/2号水車断面図
 41. 1/2号水車断面図
 42. 1/2号水車断面図
 43. 1/2号水車断面図
 44. 1/2号水車断面図
 45. 1/2号水車断面図
 46. 1/2号水車断面図
 47. 1/2号水車断面図
 48. 1/2号水車断面図
 49. 1/2号水車断面図
 50. 1/2号水車断面図
 51. 1/2号水車断面図
 52. 1/2号水車断面図
 53. 1/2号水車断面図
 54. 1/2号水車断面図
 55. 1/2号水車断面図
 56. 1/2号水車断面図
 57. 1/2号水車断面図
 58. 1/2号水車断面図
 59. 1/2号水車断面図
 60. 1/2号水車断面図
 61. 1/2号水車断面図
 62. 1/2号水車断面図
 63. 1/2号水車断面図
 64. 1/2号水車断面図
 65. 1/2号水車断面図
 66. 1/2号水車断面図
 67. 1/2号水車断面図
 68. 1/2号水車断面図
 69. 1/2号水車断面図
 70. 1/2号水車断面図
 71. 1/2号水車断面図
 72. 1/2号水車断面図
 73. 1/2号水車断面図
 74. 1/2号水車断面図
 75. 1/2号水車断面図
 76. 1/2号水車断面図
 77. 1/2号水車断面図
 78. 1/2号水車断面図
 79. 1/2号水車断面図
 80. 1/2号水車断面図
 81. 1/2号水車断面図
 82. 1/2号水車断面図
 83. 1/2号水車断面図
 84. 1/2号水車断面図
 85. 1/2号水車断面図
 86. 1/2号水車断面図
 87. 1/2号水車断面図
 88. 1/2号水車断面図
 89. 1/2号水車断面図
 90. 1/2号水車断面図
 91. 1/2号水車断面図
 92. 1/2号水車断面図
 93. 1/2号水車断面図
 94. 1/2号水車断面図
 95. 1/2号水車断面図
 96. 1/2号水車断面図
 97. 1/2号水車断面図
 98. 1/2号水車断面図
 99. 1/2号水車断面図
 100. 1/2号水車断面図

品名	数量	単位	材料	規格	備注
1	1	個	鋼	SS400	
2	1	個	鋼	SS400	
3	1	個	鋼	SS400	
4	1	個	鋼	SS400	
5	1	個	鋼	SS400	
6	1	個	鋼	SS400	
7	1	個	鋼	SS400	
8	1	個	鋼	SS400	
9	1	個	鋼	SS400	
10	1	個	鋼	SS400	
11	1	個	鋼	SS400	
12	1	個	鋼	SS400	
13	1	個	鋼	SS400	
14	1	個	鋼	SS400	
15	1	個	鋼	SS400	
16	1	個	鋼	SS400	
17	1	個	鋼	SS400	
18	1	個	鋼	SS400	
19	1	個	鋼	SS400	
20	1	個	鋼	SS400	
21	1	個	鋼	SS400	
22	1	個	鋼	SS400	
23	1	個	鋼	SS400	
24	1	個	鋼	SS400	
25	1	個	鋼	SS400	
26	1	個	鋼	SS400	
27	1	個	鋼	SS400	
28	1	個	鋼	SS400	
29	1	個	鋼	SS400	
30	1	個	鋼	SS400	
31	1	個	鋼	SS400	
32	1	個	鋼	SS400	
33	1	個	鋼	SS400	
34	1	個	鋼	SS400	
35	1	個	鋼	SS400	
36	1	個	鋼	SS400	
37	1	個	鋼	SS400	
38	1	個	鋼	SS400	
39	1	個	鋼	SS400	
40	1	個	鋼	SS400	
41	1	個	鋼	SS400	
42	1	個	鋼	SS400	
43	1	個	鋼	SS400	
44	1	個	鋼	SS400	
45	1	個	鋼	SS400	
46	1	個	鋼	SS400	
47	1	個	鋼	SS400	
48	1	個	鋼	SS400	
49	1	個	鋼	SS400	
50	1	個	鋼	SS400	
51	1	個	鋼	SS400	
52	1	個	鋼	SS400	
53	1	個	鋼	SS400	
54	1	個	鋼	SS400	
55	1	個	鋼	SS400	
56	1	個	鋼	SS400	
57	1	個	鋼	SS400	
58	1	個	鋼	SS400	
59	1	個	鋼	SS400	
60	1	個	鋼	SS400	
61	1	個	鋼	SS400	
62	1	個	鋼	SS400	
63	1	個	鋼	SS400	
64	1	個	鋼	SS400	
65	1	個	鋼	SS400	
66	1	個	鋼	SS400	
67	1	個	鋼	SS400	
68	1	個	鋼	SS400	
69	1	個	鋼	SS400	
70	1	個	鋼	SS400	
71	1	個	鋼	SS400	
72	1	個	鋼	SS400	
73	1	個	鋼	SS400	
74	1	個	鋼	SS400	
75	1	個	鋼	SS400	
76	1	個	鋼	SS400	
77	1	個	鋼	SS400	
78	1	個	鋼	SS400	
79	1	個	鋼	SS400	
80	1	個	鋼	SS400	
81	1	個	鋼	SS400	
82	1	個	鋼	SS400	
83	1	個	鋼	SS400	
84	1	個	鋼	SS400	
85	1	個	鋼	SS400	
86	1	個	鋼	SS400	
87	1	個	鋼	SS400	
88	1	個	鋼	SS400	
89	1	個	鋼	SS400	
90	1	個	鋼	SS400	
91	1	個	鋼	SS400	
92	1	個	鋼	SS400	
93	1	個	鋼	SS400	
94	1	個	鋼	SS400	
95	1	個	鋼	SS400	
96	1	個	鋼	SS400	
97	1	個	鋼	SS400	
98	1	個	鋼	SS400	
99	1	個	鋼	SS400	
100	1	個	鋼	SS400	

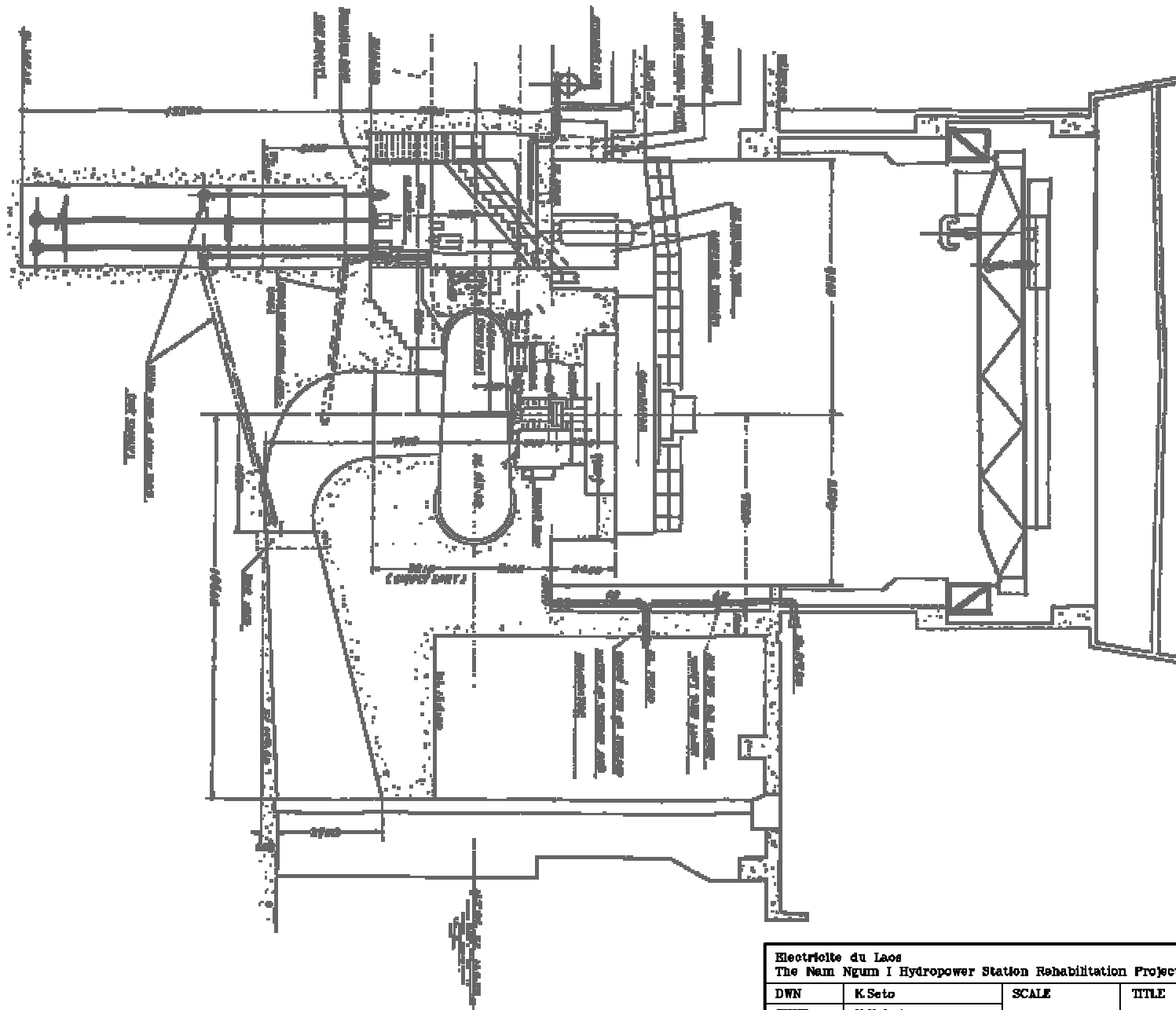
Electricite du Laos The Nam Ngum I Hydropower Station Rehabilitation Project			
DWN	K.Seto	SCALE	TITLE
CHKD	N.Nakato		1・2号水車断面図
APPD	N.Nakato	DATE	
NIPPON KOEI CO.,LTD. TOKYO, JAPAN		15 th March, 2001	DWG NO JCOPI06-21



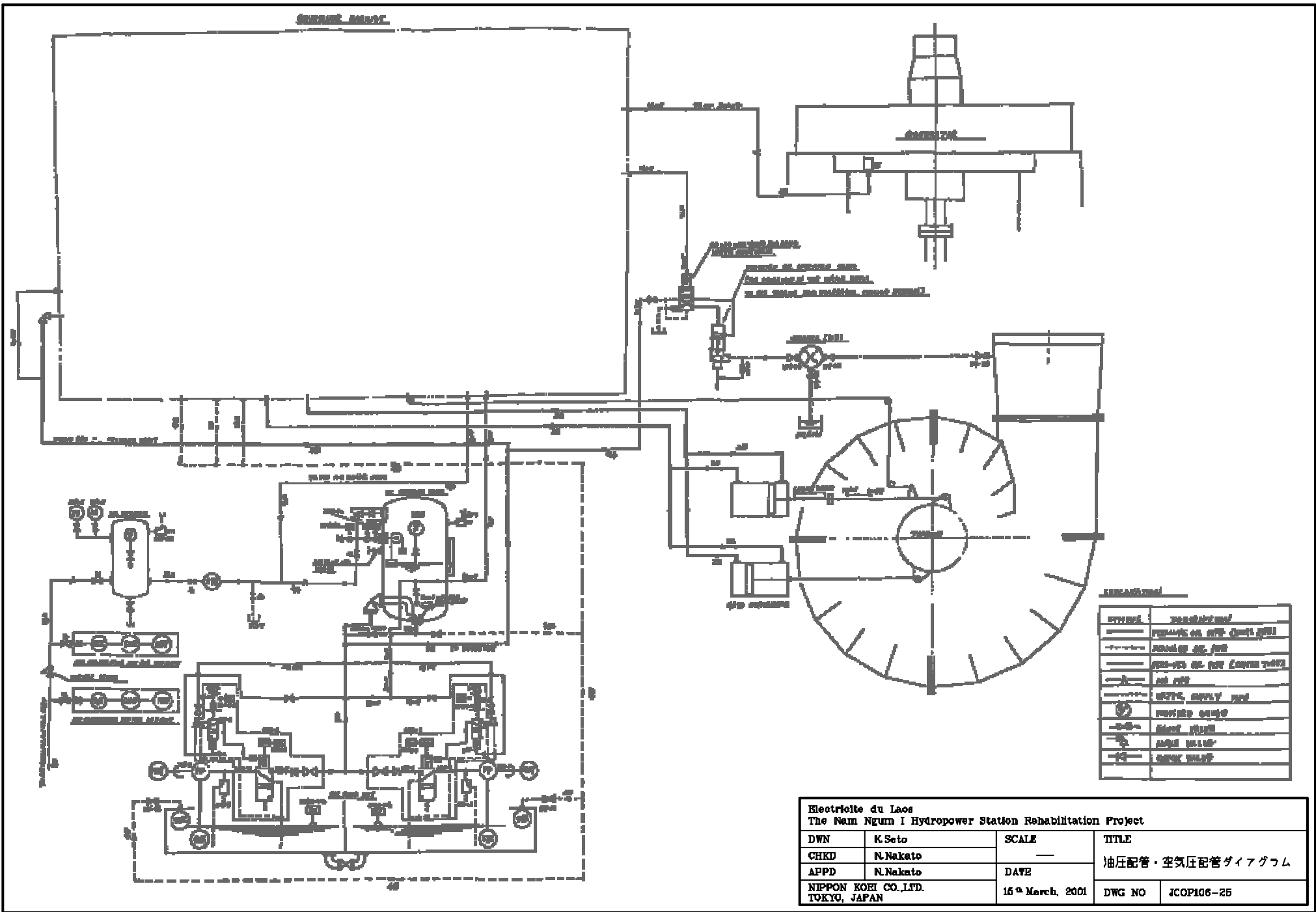
Electricite du Laos			
The Nam Ngum I Hydropower Station Rehabilitation Project			
DWN	K.Seto	SCALE	TITLE
CHKD	N.Nakato	—	1・2号水車平面図 (EL.168.50)
APPD	N.Nakato	DATE	
NIPPON KOEI CO.,LTD. TOKYO, JAPAN		15 th March, 2001	DWG NO JCOPI06-22



Electricite du Laos			
The Nam Ngum I Hydropower Station Rehabilitation Project			
DWN	K.Seto	SCALE	TITLE
CHKD	N.Nakato	—	1・2号水車平面図 (EL.161.50)
APPD	N.Nakato	DATE	
NIPPON KOEI CO.,LTD. TOKYO, JAPAN		15 th March, 2001	DWG NO JCOP106-23



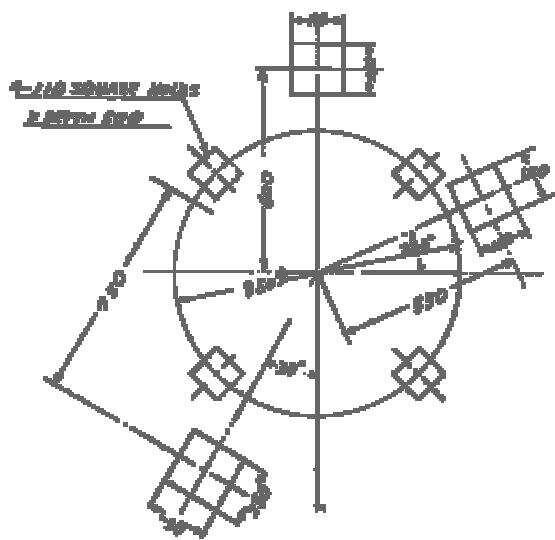
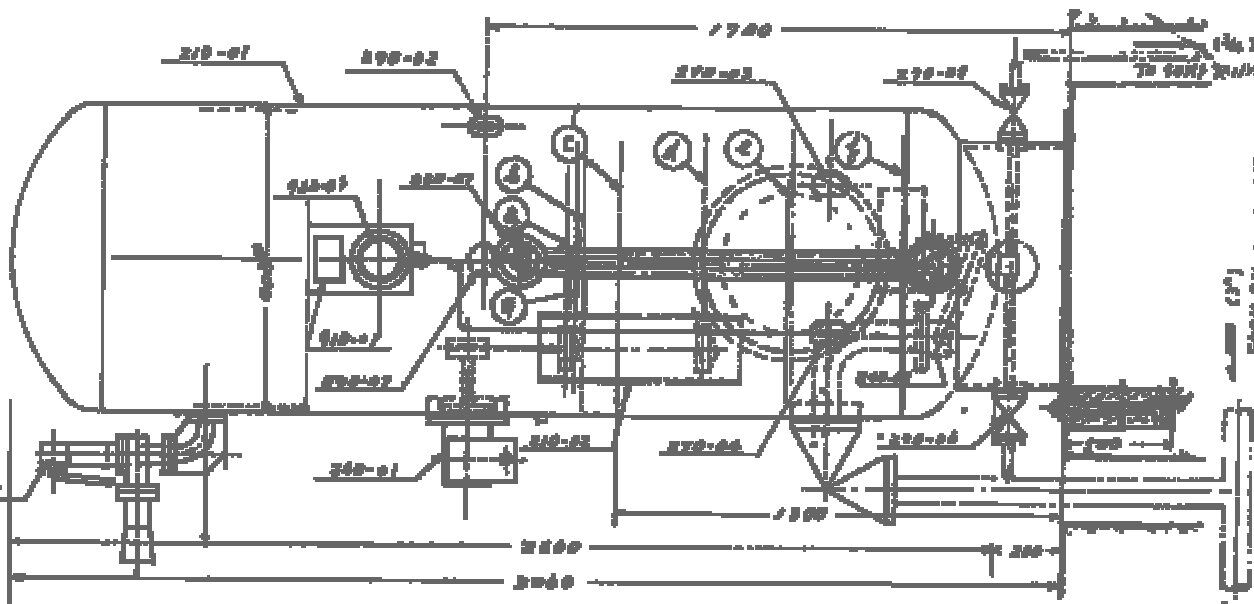
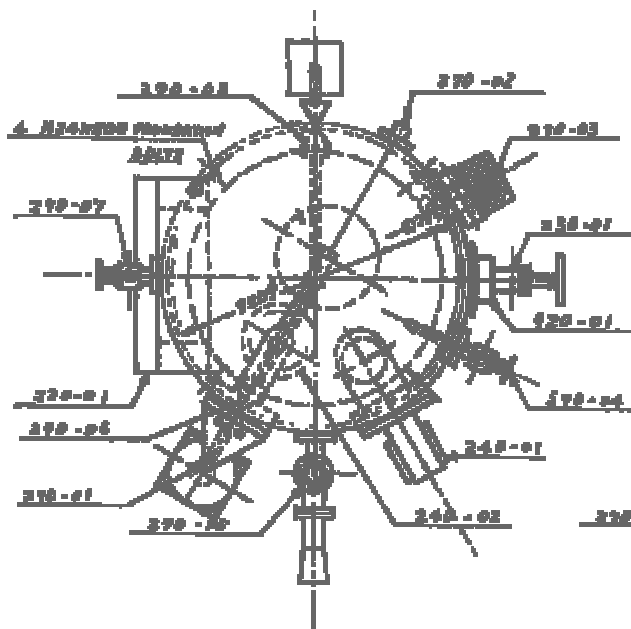
Electricite du Laos The Nam Ngum I Hydropower Station Rehabilitation Project			
DWN	K.Seto	SCALE	TITLE
CHKD	N.Nakato	—	1・2号機縦断面図
APPD	N.Nakato	DATE	
NIPPON KOEI CO.,LTD. TOKYO, JAPAN		15 th March, 2001	DWG NO JCOP106-24



Legend

—	main pipe
---	branch pipe
----	air pipe
----	air pipe (pressure pipe)
----	air pipe
----	air pipe (supply pipe)
○	valve
○	check valve
○	air valve
○	oil valve
○	oil valve

Electricite du Laos The Nam Ngum I Hydropower Station Rehabilitation Project			
DWN	K.Seto	SCALE	TITLE
CHKD	N.Nakato		油圧配管・空気圧配管ダイアグラム
APPD	N.Nakato	DATE	
NIPPON KOEI CO.,LTD. TOKYO, JAPAN		15 th March, 2001	DWG NO JCOPI06-25

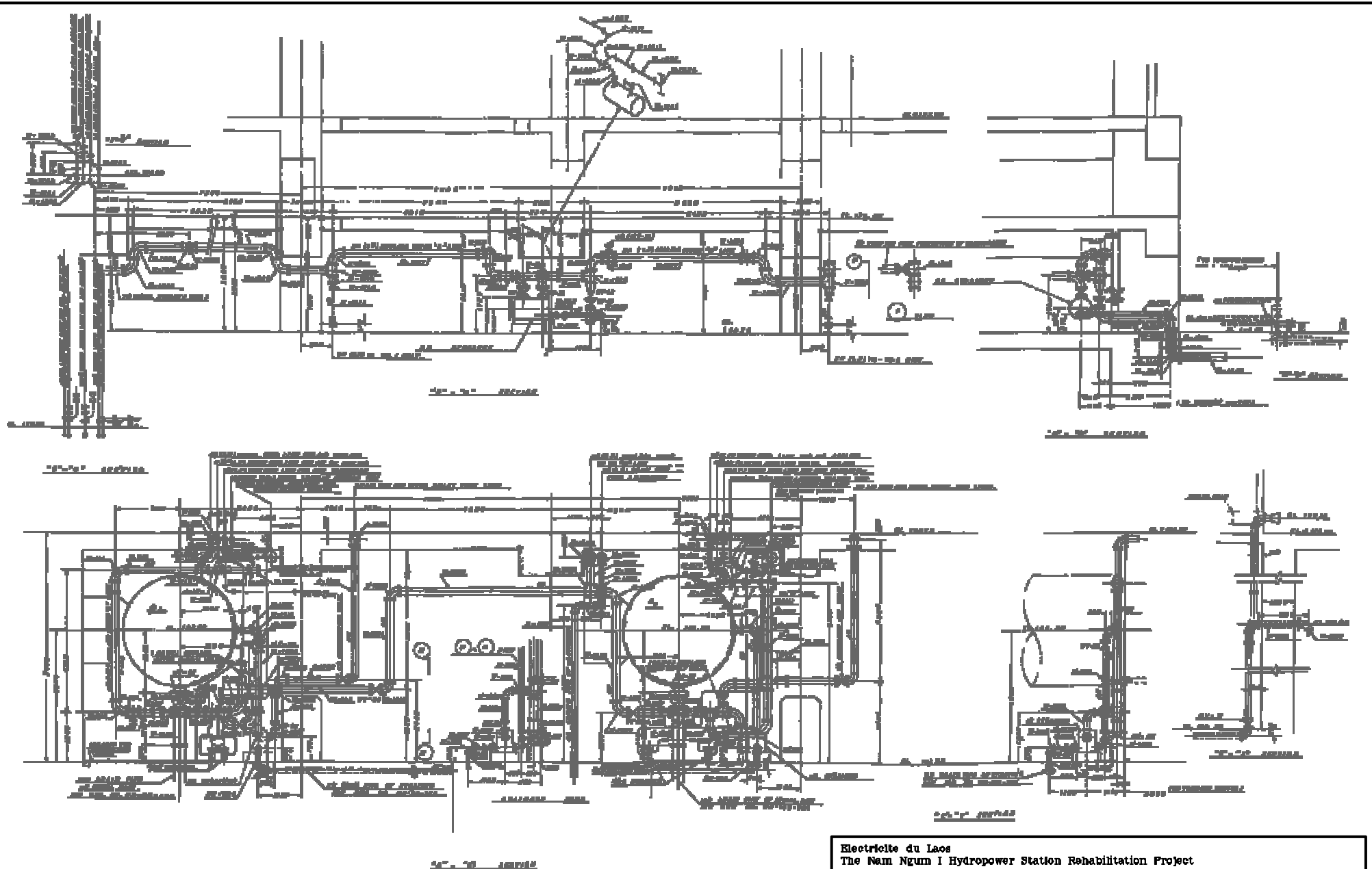


ITEM NO.	DESCRIPTION	QUANTITY	UNIT	REMARKS
01	STEEL SHEET	-127	(S)	FOR SHEET PILING
02	STEEL PIPE	-125	φ100	
03	STEEL PIPE	0	φ100	
04	ANCHOR	80	φ25	FOR SHEET PILING
05	CONCRETE	100	(M ³)	
06	STEEL PIPE	220	φ100	
07	STEEL PIPE	-125	(S)	

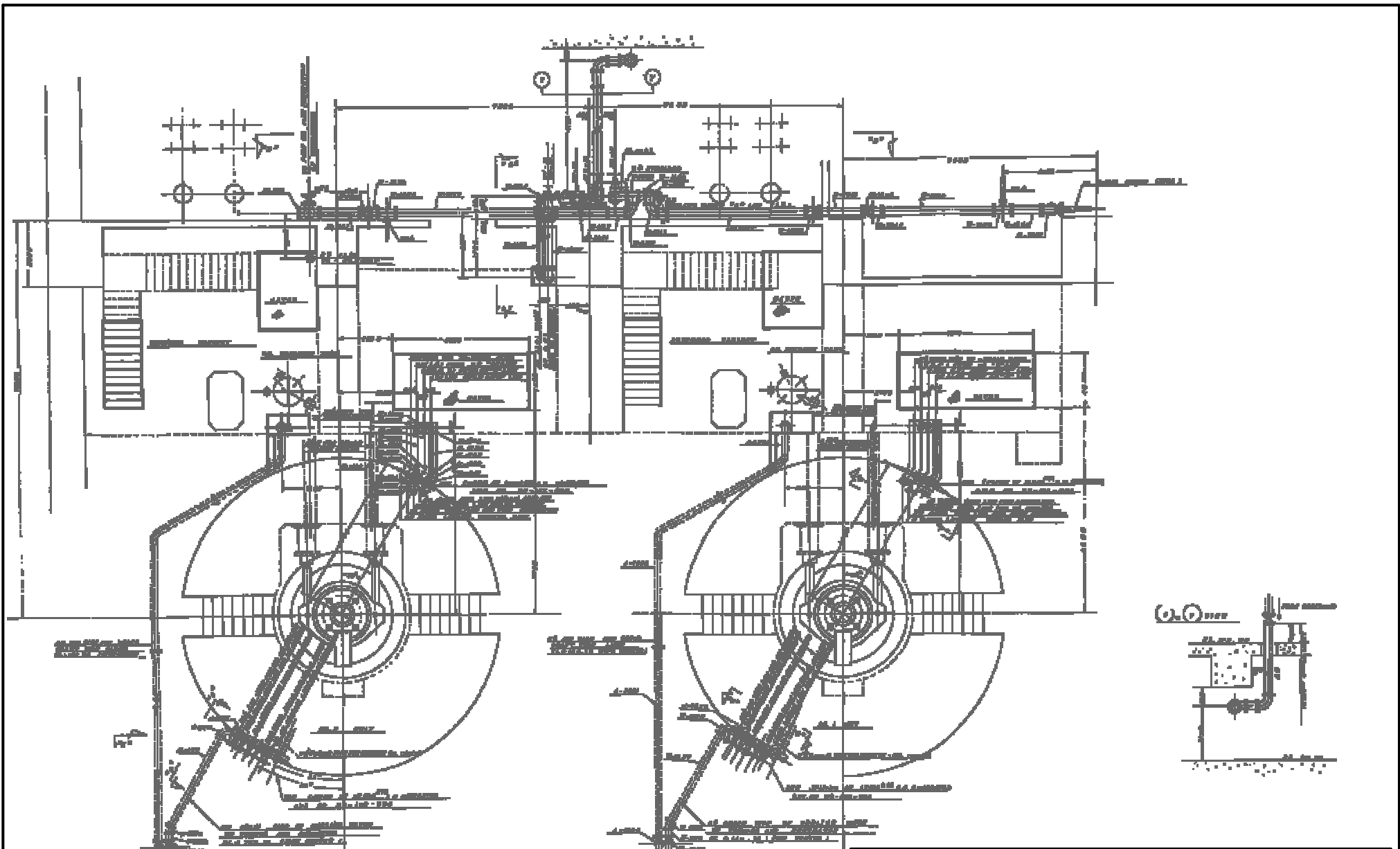
SPECIFICATION		
TOTAL VOL.	1700M ³	
NET VOL.	1600M ³	FOR OIL STORAGE
GROSS VOL.	1700M ³	FOR OIL STORAGE
NET WEIGHT	24.7 TON	
GROSS WEIGHT	31 TON	
REMARKS	FOR OIL STORAGE	FOR OIL STORAGE

ITEM NO.	DESCRIPTION	QUANTITY	UNIT
210-01	STEEL SHEET		
210-02	STEEL SHEET		
210-03	STEEL SHEET		
210-04	STEEL SHEET		
210-05	STEEL SHEET		
210-06	STEEL SHEET		
210-07	STEEL SHEET		
210-08	STEEL SHEET		
210-09	STEEL SHEET		
210-10	STEEL SHEET		
210-11	STEEL SHEET		
210-12	STEEL SHEET		
210-13	STEEL SHEET		
210-14	STEEL SHEET		
210-15	STEEL SHEET		
210-16	STEEL SHEET		
210-17	STEEL SHEET		
210-18	STEEL SHEET		
210-19	STEEL SHEET		
210-20	STEEL SHEET		
210-21	STEEL SHEET		
210-22	STEEL SHEET		
210-23	STEEL SHEET		
210-24	STEEL SHEET		
210-25	STEEL SHEET		
210-26	STEEL SHEET		
210-27	STEEL SHEET		
210-28	STEEL SHEET		
210-29	STEEL SHEET		
210-30	STEEL SHEET		

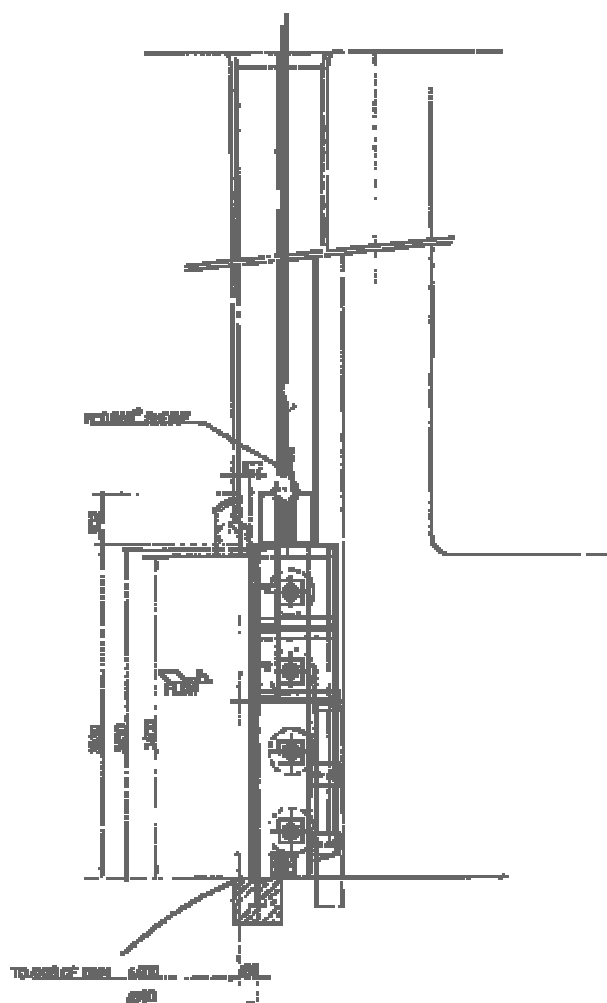
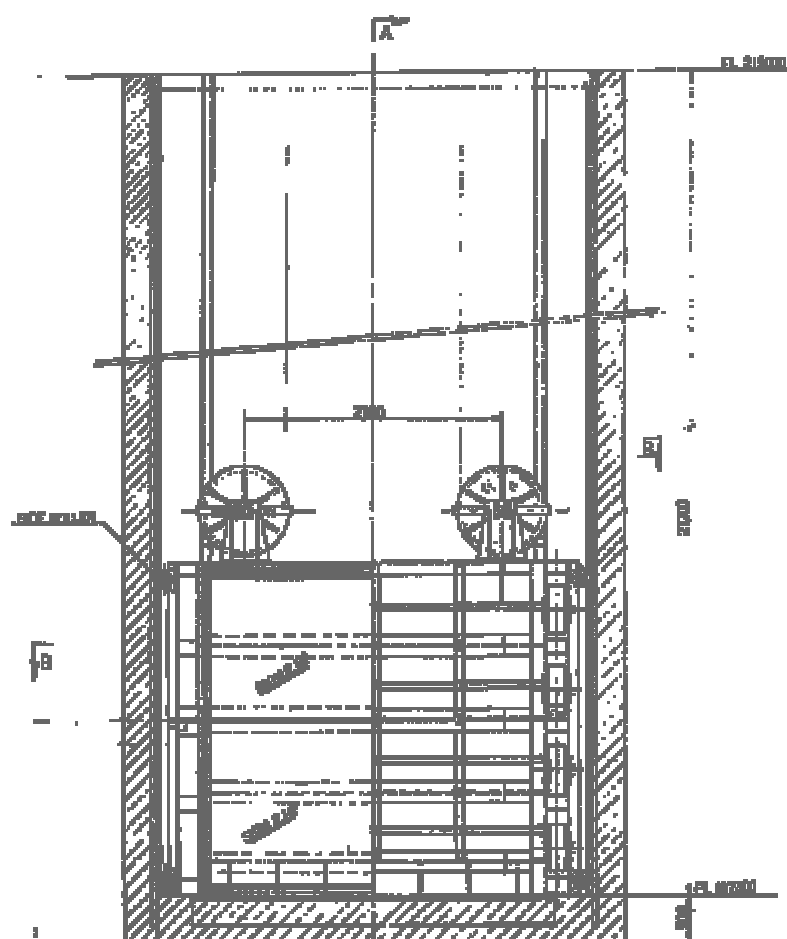
Electricite du Laos The Nam Ngum I Hydropower Station Rehabilitation Project			
DWN	K.Seto	SCALE	TITLE
CHKD	N.Nakato	—	油圧タンク外形図
APPD	N.Nakato	DATE	
NIPPON KOEI CO.,LTD. TOKYO, JAPAN		15 th March, 2001	DWG NO JCOP106-26



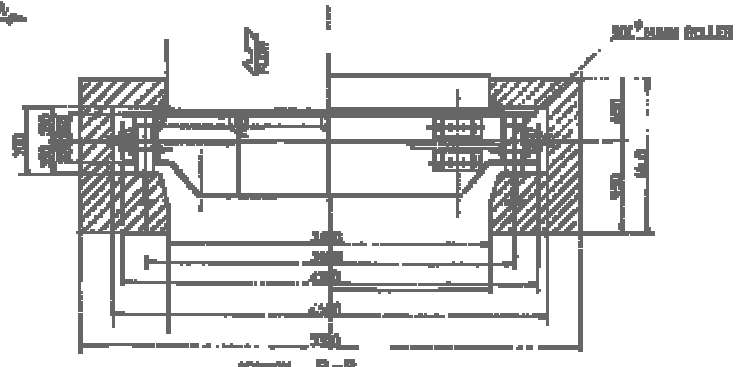
Electricite du Laos The Nam Ngum I Hydropower Station Rehabilitation Project			
DWN	K.Seto	SCALE	TITLE
CHKD	N.Nakato	—	冷却水配管図 (1)
APPD	N.Nakato	DATE	
NIPPON KOEI CO.,LTD. TOKYO, JAPAN		15 th March, 2001	DWG NO JCOPI06-27



Electricite du Laos			
The Nam Ngum I Hydropower Station Rehabilitation Project			
DWN	K.Seto	SCALE	TITLE
CHKD	N.Nakato	—	冷却水配管図 (2)
APPD	N.Nakato	DATE	
NIPPON KOEI CO.,LTD. TOKYO, JAPAN		15 th March, 2001	DWG NO JCOPI06-2B

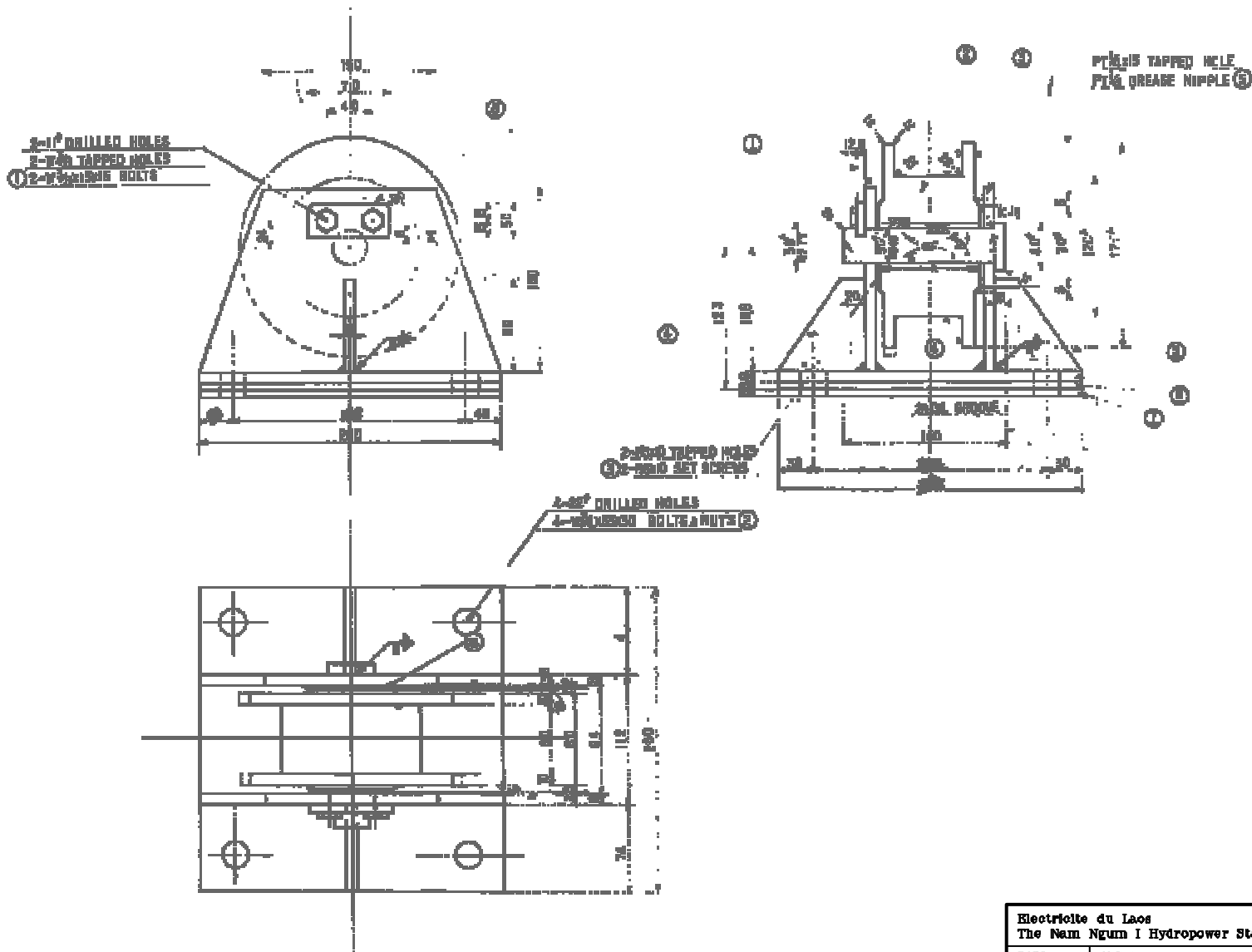


SECTION A-A



SECTION B-B

Electricite du Laos			
The Nam Ngum I Hydropower Station Rehabilitation Project			
DWN	K.Seto	SCALE	TITLE
CHKD	N.Nakato	—	1・2号取水口ゲート組立図
APPD	N.Nakato	DATE	
NIPPON KOEI CO.,LTD. TOKYO, JAPAN		15 th March, 2001	DWG NO JCOPI06-29



NO.	DESCRIPTION	QTY	UNIT	REMARKS
1	1/2" DIA. TAPPED HOLE	174		
2	1/2" DIA. TAPPED HOLE	174		
3	1/2" DIA. TAPPED HOLE	174		
4	1/2" DIA. TAPPED HOLE	174		
5	1/2" DIA. TAPPED HOLE	174		
6	1/2" DIA. TAPPED HOLE	174		
7	1/2" DIA. TAPPED HOLE	174		
8	1/2" DIA. TAPPED HOLE	174		
9	1/2" DIA. TAPPED HOLE	174		
10	1/2" DIA. TAPPED HOLE	174		
11	1/2" DIA. TAPPED HOLE	174		
12	1/2" DIA. TAPPED HOLE	174		
13	1/2" DIA. TAPPED HOLE	174		
14	1/2" DIA. TAPPED HOLE	174		
15	1/2" DIA. TAPPED HOLE	174		
16	1/2" DIA. TAPPED HOLE	174		
17	1/2" DIA. TAPPED HOLE	174		
18	1/2" DIA. TAPPED HOLE	174		
19	1/2" DIA. TAPPED HOLE	174		
20	1/2" DIA. TAPPED HOLE	174		
21	1/2" DIA. TAPPED HOLE	174		
22	1/2" DIA. TAPPED HOLE	174		
23	1/2" DIA. TAPPED HOLE	174		
24	1/2" DIA. TAPPED HOLE	174		
25	1/2" DIA. TAPPED HOLE	174		
26	1/2" DIA. TAPPED HOLE	174		
27	1/2" DIA. TAPPED HOLE	174		
28	1/2" DIA. TAPPED HOLE	174		
29	1/2" DIA. TAPPED HOLE	174		
30	1/2" DIA. TAPPED HOLE	174		
31	1/2" DIA. TAPPED HOLE	174		
32	1/2" DIA. TAPPED HOLE	174		
33	1/2" DIA. TAPPED HOLE	174		
34	1/2" DIA. TAPPED HOLE	174		
35	1/2" DIA. TAPPED HOLE	174		
36	1/2" DIA. TAPPED HOLE	174		
37	1/2" DIA. TAPPED HOLE	174		
38	1/2" DIA. TAPPED HOLE	174		
39	1/2" DIA. TAPPED HOLE	174		
40	1/2" DIA. TAPPED HOLE	174		
41	1/2" DIA. TAPPED HOLE	174		
42	1/2" DIA. TAPPED HOLE	174		
43	1/2" DIA. TAPPED HOLE	174		
44	1/2" DIA. TAPPED HOLE	174		
45	1/2" DIA. TAPPED HOLE	174		
46	1/2" DIA. TAPPED HOLE	174		
47	1/2" DIA. TAPPED HOLE	174		
48	1/2" DIA. TAPPED HOLE	174		
49	1/2" DIA. TAPPED HOLE	174		
50	1/2" DIA. TAPPED HOLE	174		
51	1/2" DIA. TAPPED HOLE	174		
52	1/2" DIA. TAPPED HOLE	174		
53	1/2" DIA. TAPPED HOLE	174		
54	1/2" DIA. TAPPED HOLE	174		
55	1/2" DIA. TAPPED HOLE	174		
56	1/2" DIA. TAPPED HOLE	174		
57	1/2" DIA. TAPPED HOLE	174		
58	1/2" DIA. TAPPED HOLE	174		
59	1/2" DIA. TAPPED HOLE	174		
60	1/2" DIA. TAPPED HOLE	174		
61	1/2" DIA. TAPPED HOLE	174		
62	1/2" DIA. TAPPED HOLE	174		
63	1/2" DIA. TAPPED HOLE	174		
64	1/2" DIA. TAPPED HOLE	174		
65	1/2" DIA. TAPPED HOLE	174		
66	1/2" DIA. TAPPED HOLE	174		
67	1/2" DIA. TAPPED HOLE	174		
68	1/2" DIA. TAPPED HOLE	174		
69	1/2" DIA. TAPPED HOLE	174		
70	1/2" DIA. TAPPED HOLE	174		
71	1/2" DIA. TAPPED HOLE	174		
72	1/2" DIA. TAPPED HOLE	174		
73	1/2" DIA. TAPPED HOLE	174		
74	1/2" DIA. TAPPED HOLE	174		
75	1/2" DIA. TAPPED HOLE	174		
76	1/2" DIA. TAPPED HOLE	174		
77	1/2" DIA. TAPPED HOLE	174		
78	1/2" DIA. TAPPED HOLE	174		
79	1/2" DIA. TAPPED HOLE	174		
80	1/2" DIA. TAPPED HOLE	174		
81	1/2" DIA. TAPPED HOLE	174		
82	1/2" DIA. TAPPED HOLE	174		
83	1/2" DIA. TAPPED HOLE	174		
84	1/2" DIA. TAPPED HOLE	174		
85	1/2" DIA. TAPPED HOLE	174		
86	1/2" DIA. TAPPED HOLE	174		
87	1/2" DIA. TAPPED HOLE	174		
88	1/2" DIA. TAPPED HOLE	174		
89	1/2" DIA. TAPPED HOLE	174		
90	1/2" DIA. TAPPED HOLE	174		
91	1/2" DIA. TAPPED HOLE	174		
92	1/2" DIA. TAPPED HOLE	174		
93	1/2" DIA. TAPPED HOLE	174		
94	1/2" DIA. TAPPED HOLE	174		
95	1/2" DIA. TAPPED HOLE	174		
96	1/2" DIA. TAPPED HOLE	174		
97	1/2" DIA. TAPPED HOLE	174		
98	1/2" DIA. TAPPED HOLE	174		
99	1/2" DIA. TAPPED HOLE	174		
100	1/2" DIA. TAPPED HOLE	174		

1. SCALE 1:10
 2. ALL DIMENSIONS ARE IN MILLIMETERS.

Electricite du Laos The Nam Ngum I Hydropower Station Rehabilitation Project			
DWN	K.Seto	SCALE	TITLE
CHKD	N.Nakato	—	1-2号取水ロケット
APPD	N.Nakato	DATE	サイドローラー詳細図
NIPPON KOEI CO.,LTD. TOKYO, JAPAN		15 th March, 2001	DWG NO JCOPI06-80