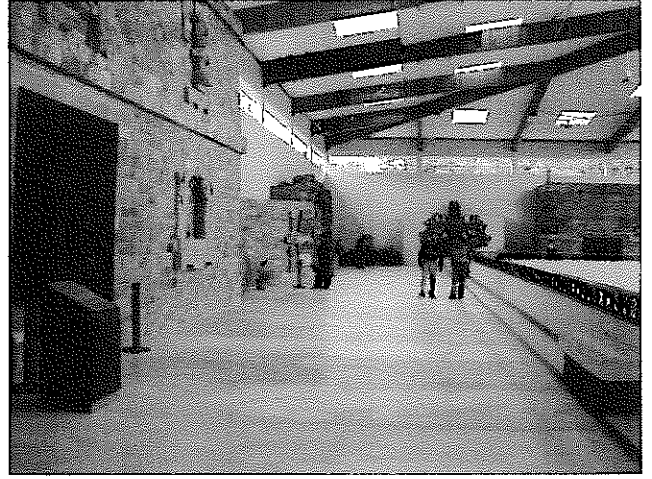


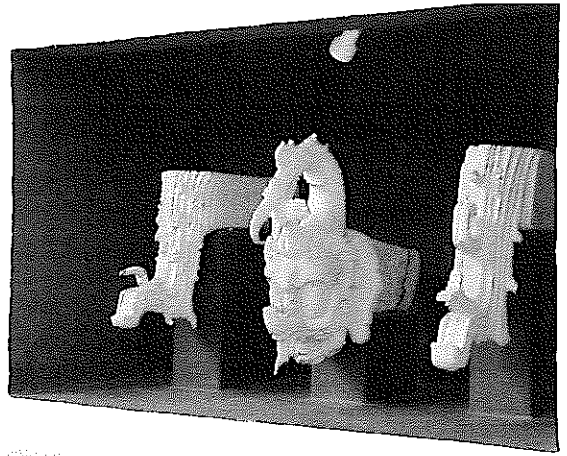
12-1 石造彫刻博物館入口 (石造彫刻博物館・コパン)



12-2 展示① (石造彫刻博物館・コパン)



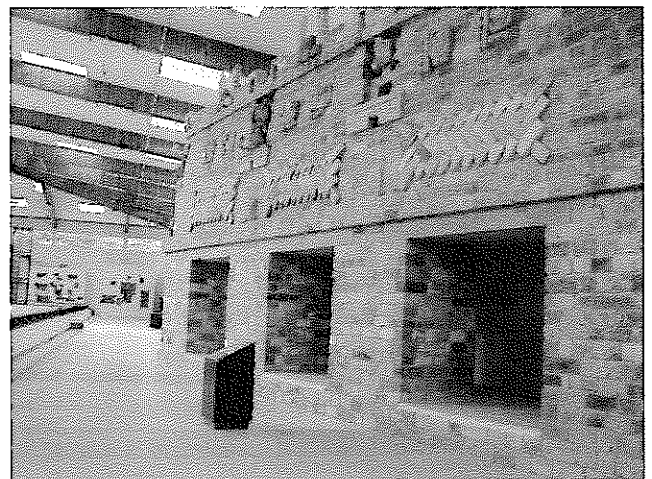
12-3 展示② (石造彫刻博物館・コパン)



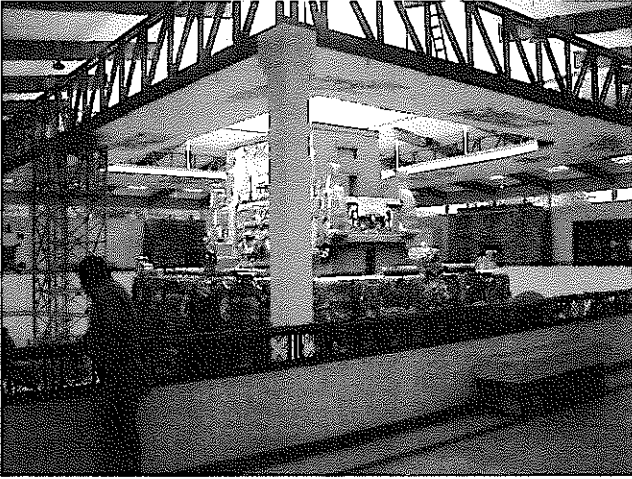
12-4 展示③ (石造彫刻博物館・コパン)



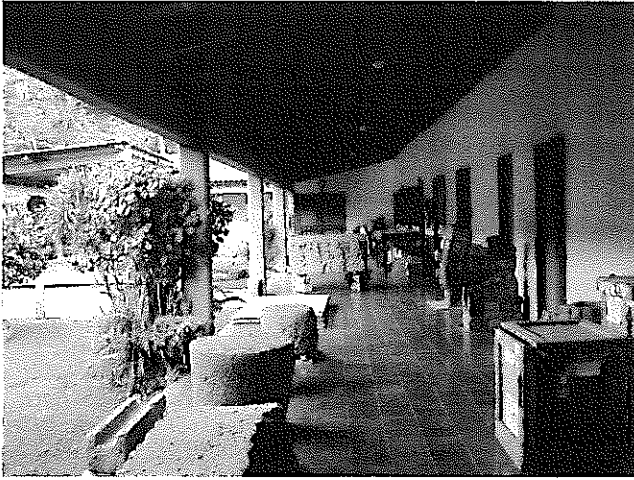
12-5 展示④ (石造彫刻博物館・コパン)



12-6 展示⑤ (石造彫刻博物館・コパン)



12-7 ロサリラの実物大レプリカ (石造彫刻博物館・コパン)



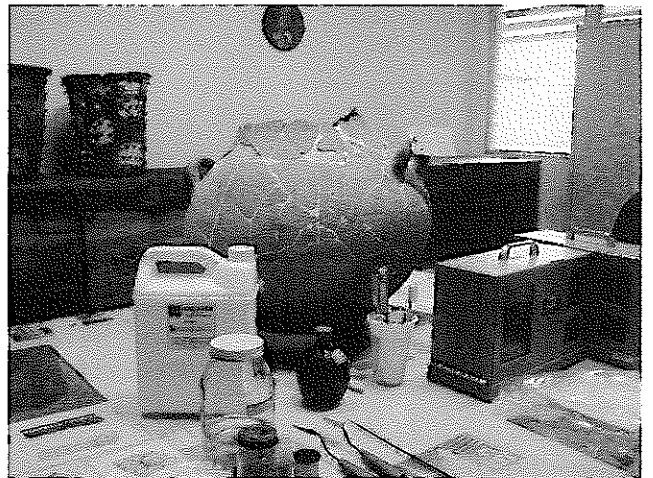
13-1 CRIA-中庭 (CRIA コパン)



13-2 暗室① (CRIA コパン)



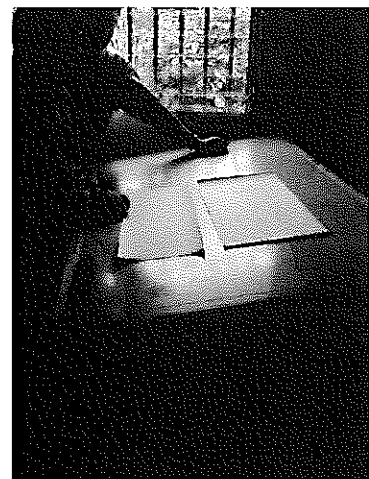
13-3 暗室② (CRIA コパン)



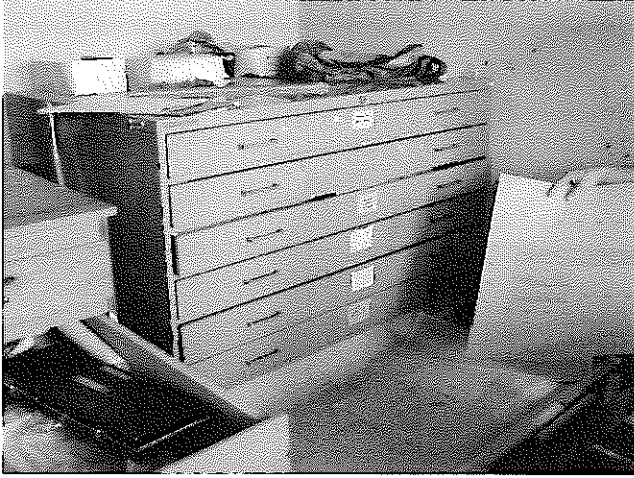
13-4 修復室① (CRIA コパン)



13-5 修復室②



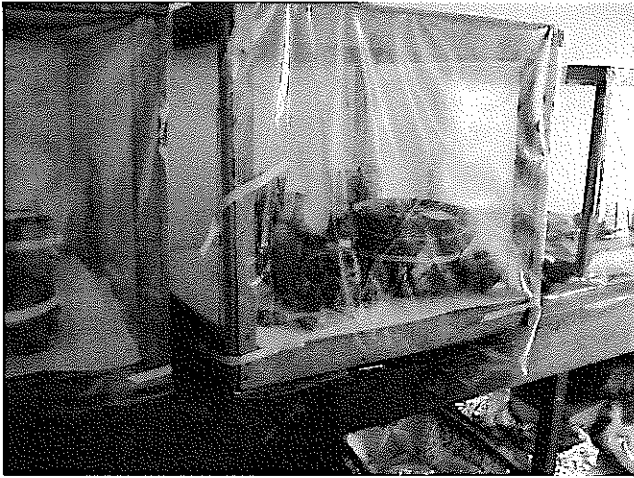
13-6 製図室① (CRIA コパン)



13-7 製図室② (CRIA コパン)



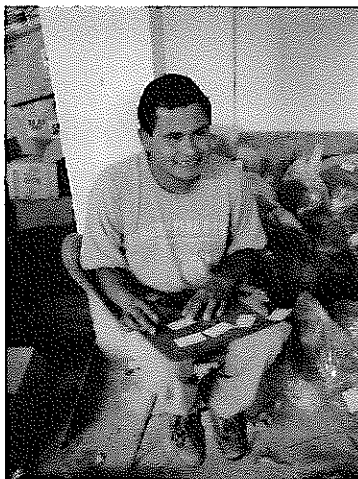
13-8 出土した状態の土器 (CRIA コパン)



13-9 洗浄後 乾燥中の出土品 (CRIA コパン)



13-10 出土品の整理 (CRIA コパン)



13-11 出土品のラベル作成 (CRIA コパン)



13-12 倉庫内の作業場 (CRIA コパン)



13-13 倉庫① (CRIA コパン)



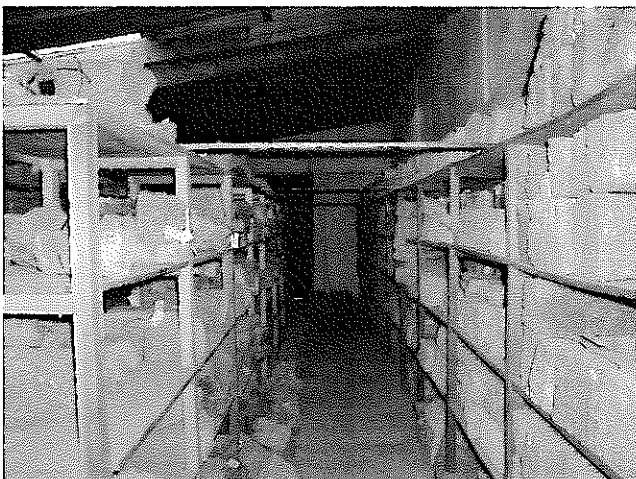
13-14 倉庫② (CRIA コパン)



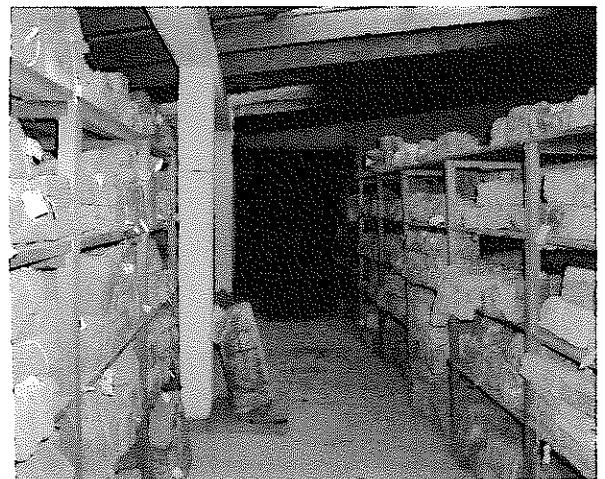
13-15 倉庫③ (CRIA コパン)



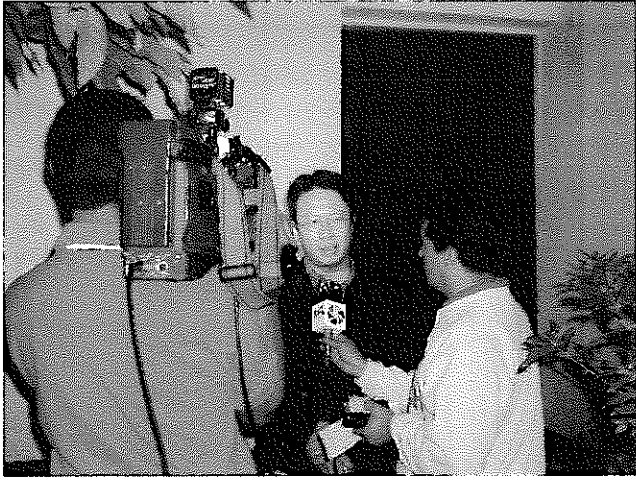
13-16 倉庫④ (CRIA コパン)



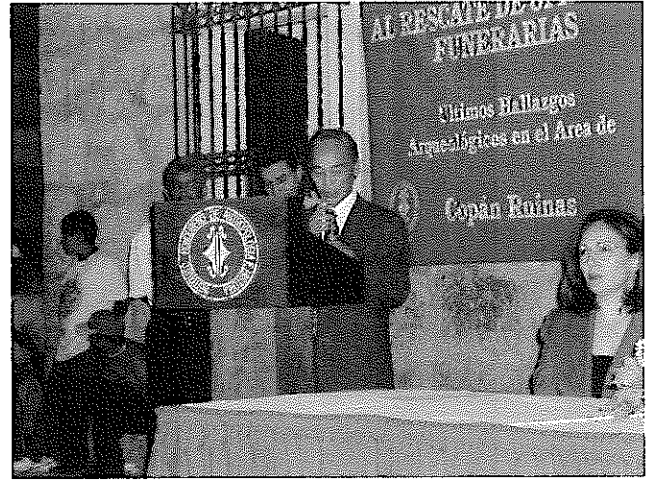
13-17 倉庫⑤ (CRIA コパン)



13-18 倉庫⑥ (CRIA コパン)



14-1 「王墓発掘展」でインタビューを受ける中村氏



14-2 「王墓発掘展」でスピーチをする小林参事官