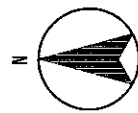
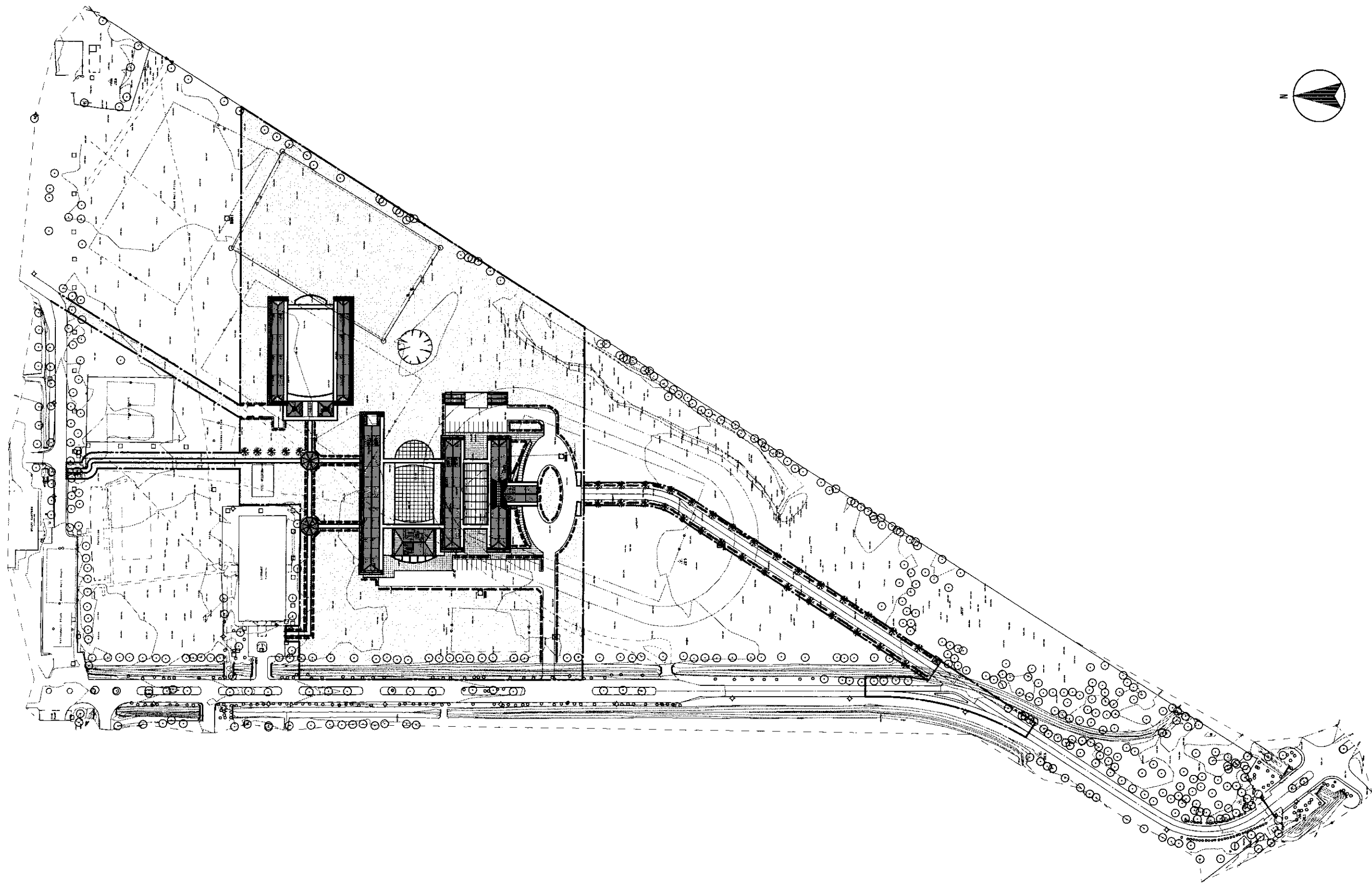
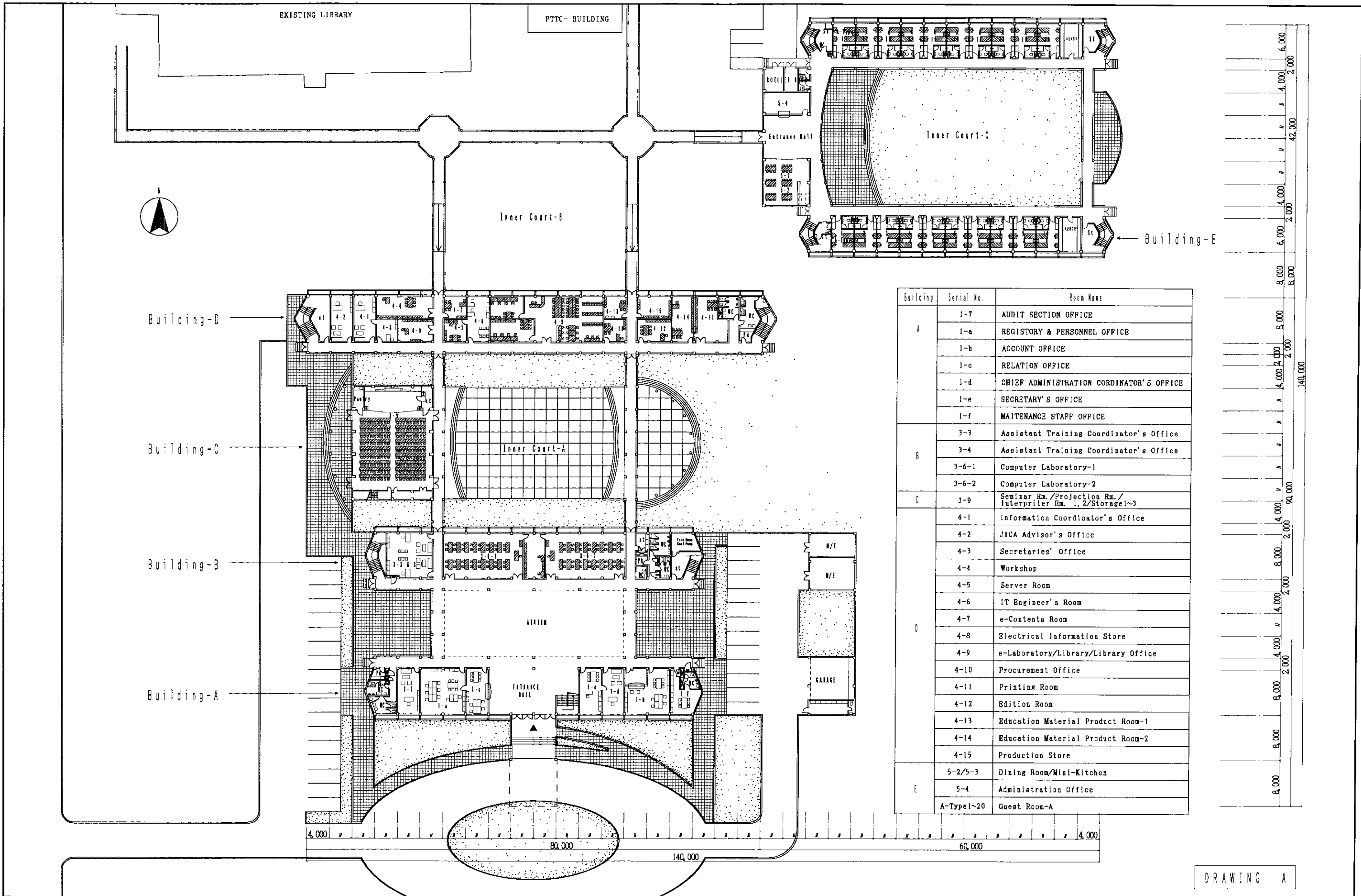


### **2-2-3 Basic Design Drawing & Equipment List**

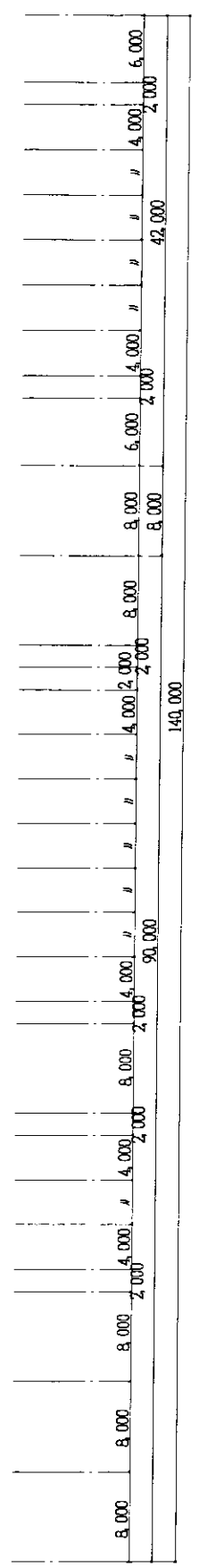
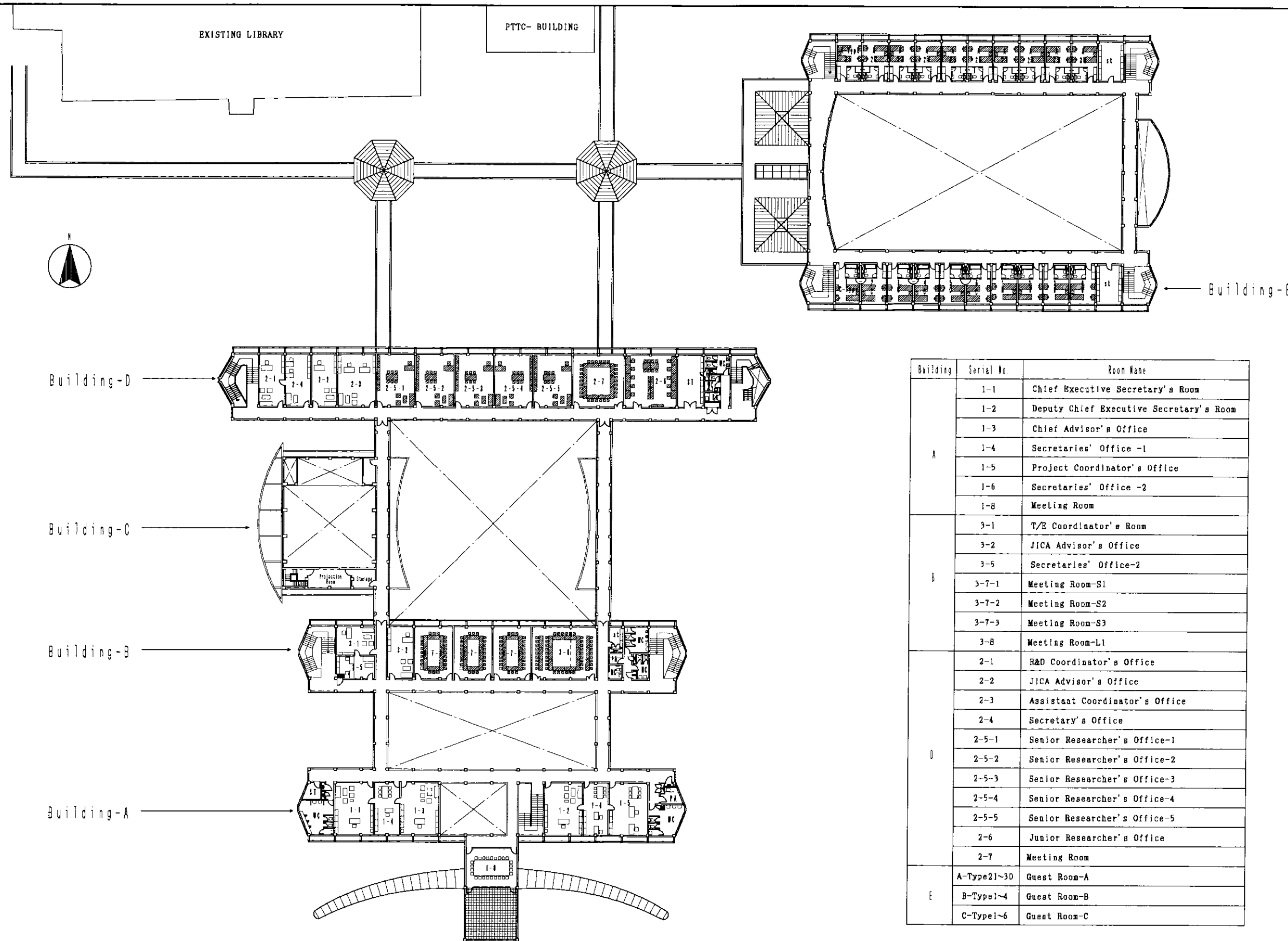


<p>PROJECT TITLE          THE BASIC DESIGN STUDY ON          THE PROJECT FOR ESTABLISHMENT OF          THE AFRICAN INSTITUTE FOR CAPACITY DEVELOPMENT          IN THE REPUBLIC OF KENYA</p>	<p>FACILITY DESIGN          PACIFIC CONSULTANTS INTERNATIONAL</p>	<p>SCALE          1:2000</p>	<p>DATE          MARCH. 2001</p>	<p>DWG. TITLE          SITE PLAN-2</p>	<p>DWG. NO.          1</p>
---	---	----------------------------------	--------------------------------------	--	--------------------------------

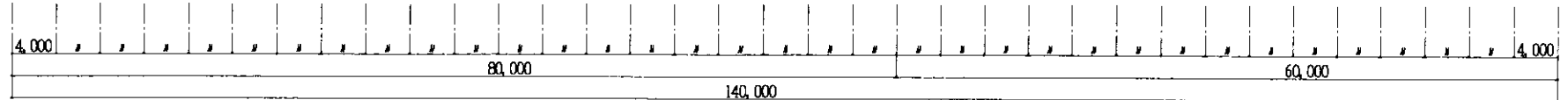


Building	Serial No.	Room Name
A	1-7	AUDIT SECTION OFFICE
	1-a	REGISTRY & PERSONNEL OFFICE
	1-b	ACCOUNT OFFICE
	1-c	RELATION OFFICE
	1-d	CHIEF ADMINISTRATION COORDINATOR'S OFFICE
	1-e	SECRETARY'S OFFICE
B	3-3	Assistant Training Coordinator's Office
	3-4	Assistant Training Coordinator's Office
	3-6-1	Computer Laboratory-1
C	3-6-2	Computer Laboratory-2
	3-9	Seminar Rm./Projection Rm./Interpreter Rm.-1, 2/Storage1~3
D	4-1	Information Coordinator's Office
	4-2	JICA Advisor's Office
	4-3	Secretaries' Office
	4-4	Workshop
	4-5	Server Room
	4-6	IT Engineer's Room
	4-7	e-Contents Room
	4-8	Electrical Information Store
	4-9	e-Laboratory/Library/Library Office
	4-10	Procurement Office
	4-11	Printing Room
	4-12	Edition Room
	4-13	Education Material Product Room-1
	4-14	Education Material Product Room-2
E	4-15	Production Store
	5-2/5-3	Dining Room/Mini-Kitchen
	5-4	Administration Office
	A-Typel~20	Guest Room-A

DRAWING A



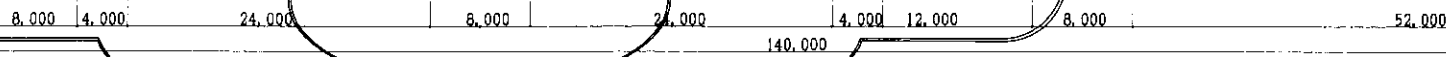
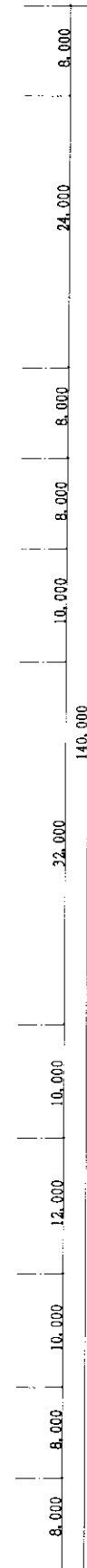
Building	Serial No.	Room Name
A	1-1	Chief Executive Secretary's Room
	1-2	Deputy Chief Executive Secretary's Room
	1-3	Chief Advisor's Office
	1-4	Secretaries' Office -1
	1-5	Project Coordinator's Office
	1-6	Secretaries' Office -2
	1-8	Meeting Room
	B	3-1
3-2		JICA Advisor's Office
3-5		Secretaries' Office-2
3-7-1		Meeting Room-S1
3-7-2		Meeting Room-S2
3-7-3		Meeting Room-S3
3-8		Meeting Room-L1
D		2-1
	2-2	JICA Advisor's Office
	2-3	Assistant Coordinator's Office
	2-4	Secretary's Office
	2-5-1	Senior Researcher's Office-1
	2-5-2	Senior Researcher's Office-2
	2-5-3	Senior Researcher's Office-3
	2-5-4	Senior Researcher's Office-4
E	2-5-5	Senior Researcher's Office-5
	2-6	Junior Researcher's Office
	2-7	Meeting Room
	A-Type21~30	Guest Room-A
	B-Type1~4	Guest Room-B
	C-Type1~6	Guest Room-C

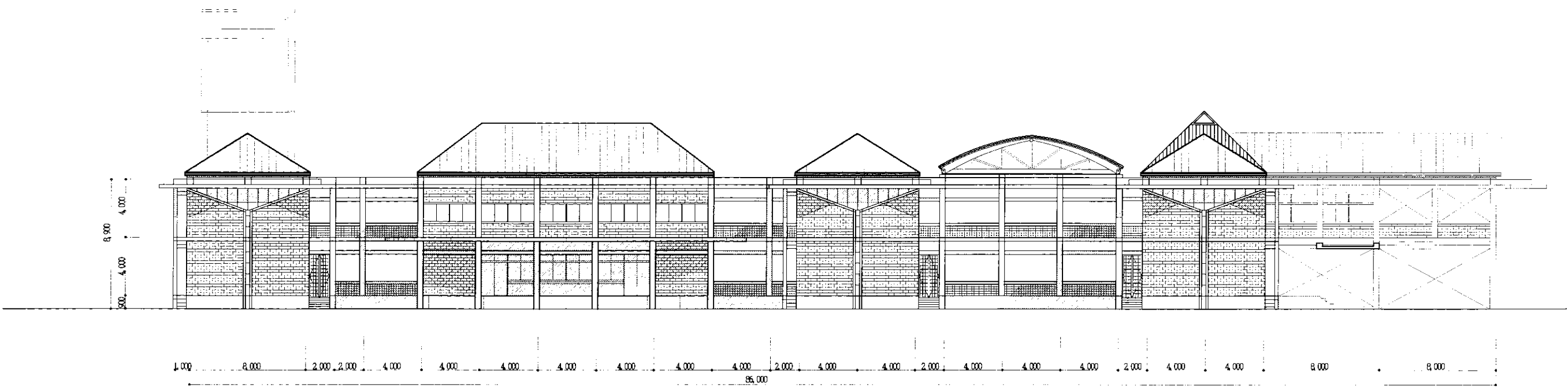
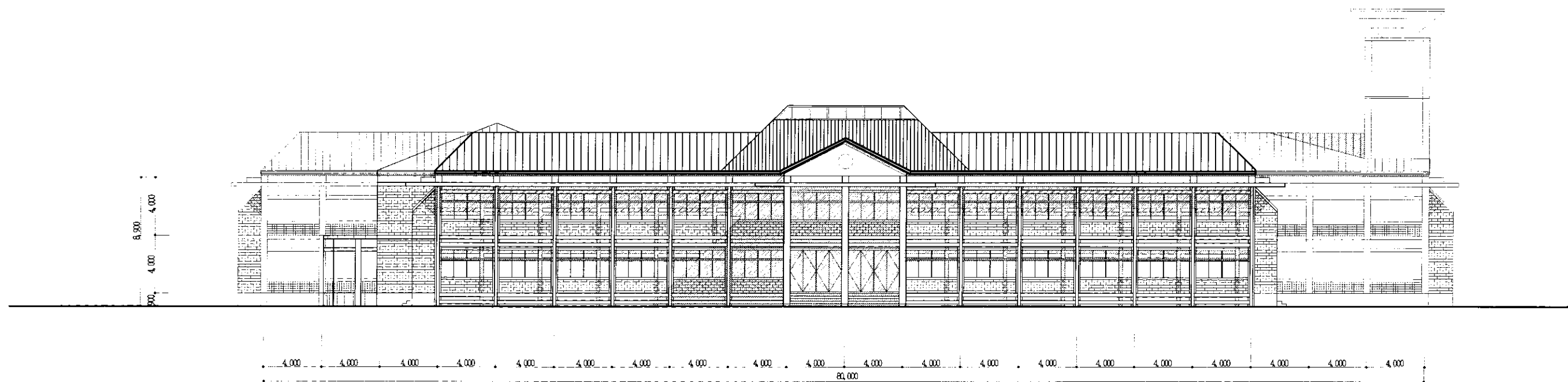


DRAWING B

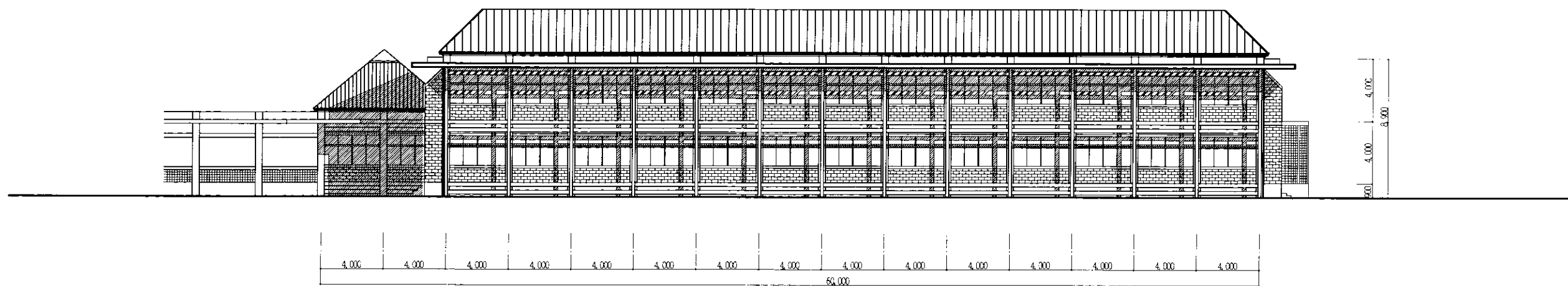
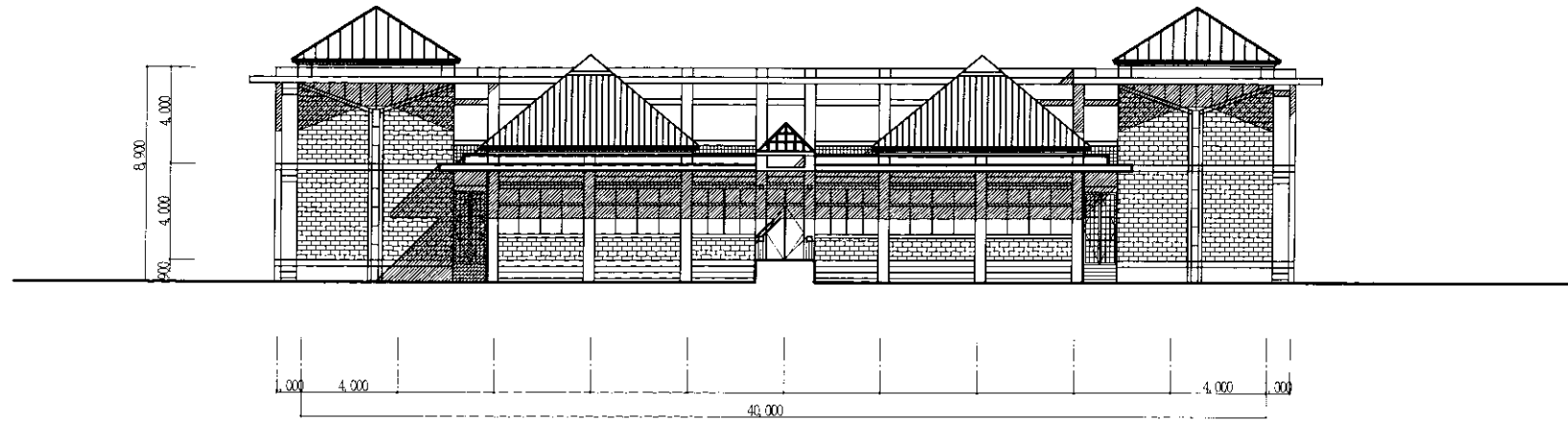
EXISTING LIBRARY

PTTC- BUILDING

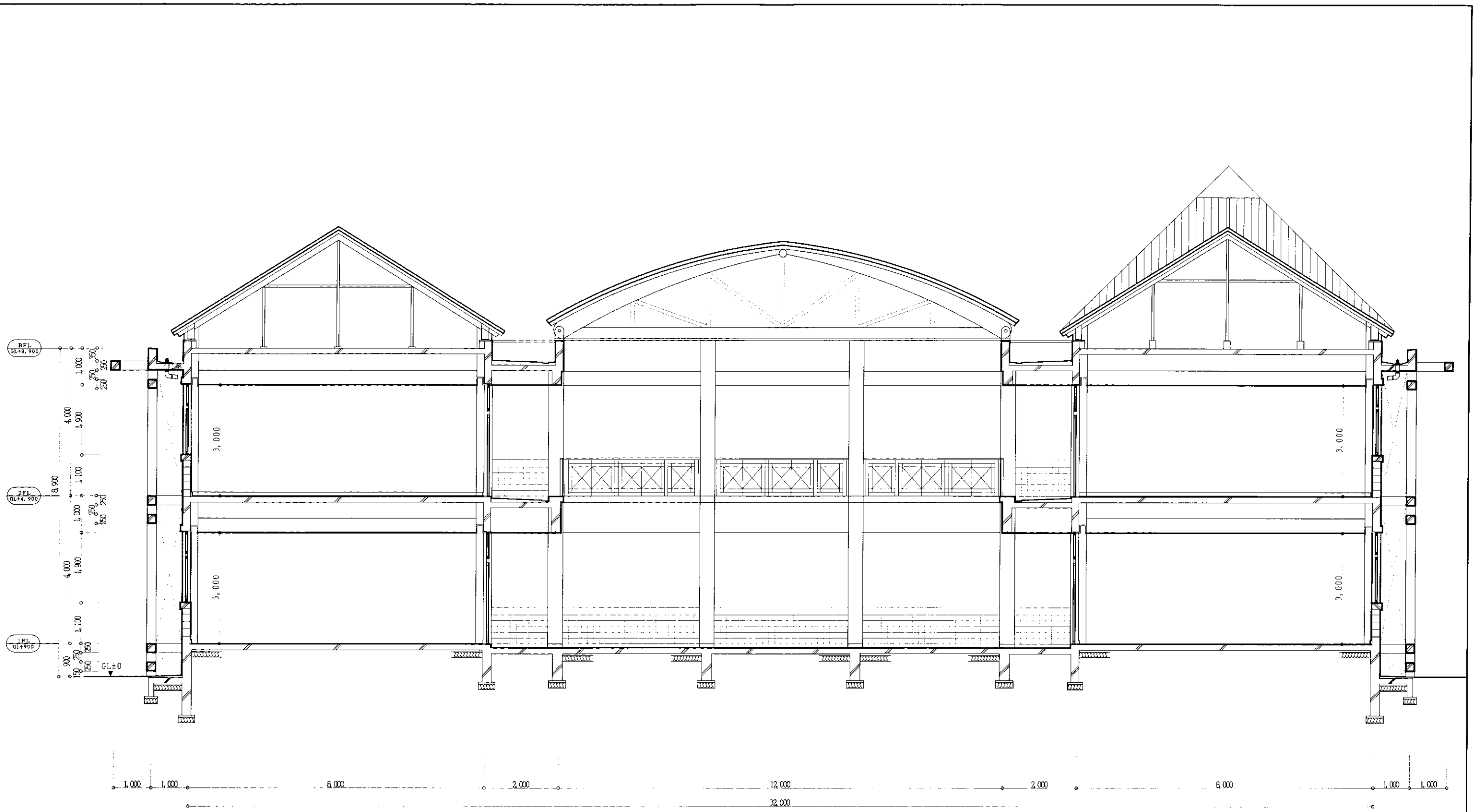




PROJECT TITLE THE BASIC DESIGN STUDY ON THE PROJECT FOR ESTABLISHMENT OF THE AFRICAN INSTITUTE FOR CAPACITY DEVELOPMENT IN THE REPUBLIC OF KENYA	FACILITY DESIGN PACIFIC CONSULTANTS INTERNATIONAL	SCALE 1:300	DATE MARCH. 2001	DRG. TITLE ELEVATION-1	DRG. NO. 5
--	--	----------------	---------------------	---------------------------	---------------



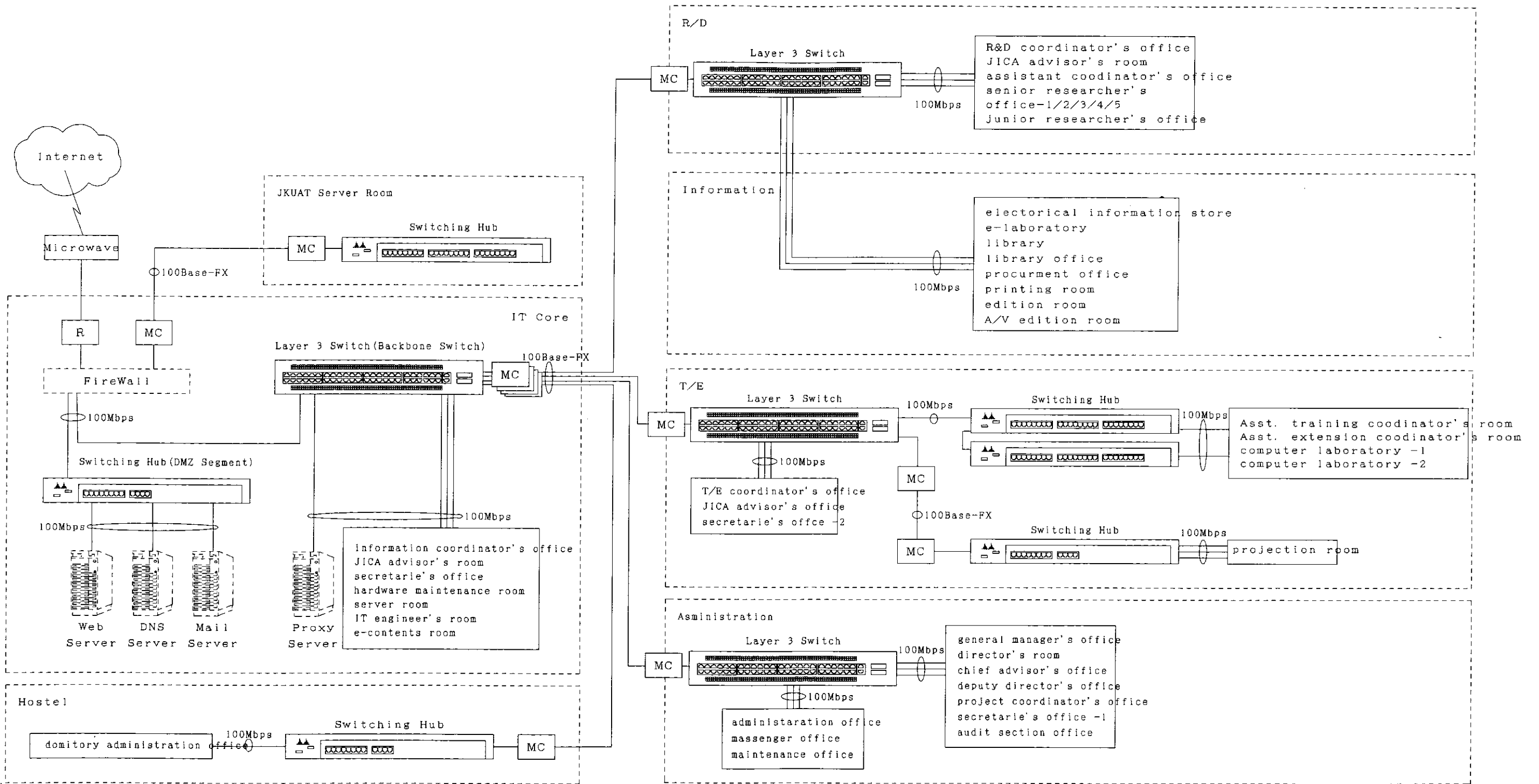
PROJECT TITLE THE BASIC DESIGN STUDY ON THE PROJECT FOR ESTABLISHMENT OF THE AFRICAN INSTITUTE FOR CAPACITY DEVELOPMENT IN THE REPUBLIC OF KENYA	FACILITY DESIGN PACIFIC CONSULTANTS INTERNATIONAL	SCALE 1:300	DATE MARCH, 2001	DWG. TITLE ELEVATION-2	DWG. NO. 6
--	--	----------------	---------------------	---------------------------	---------------



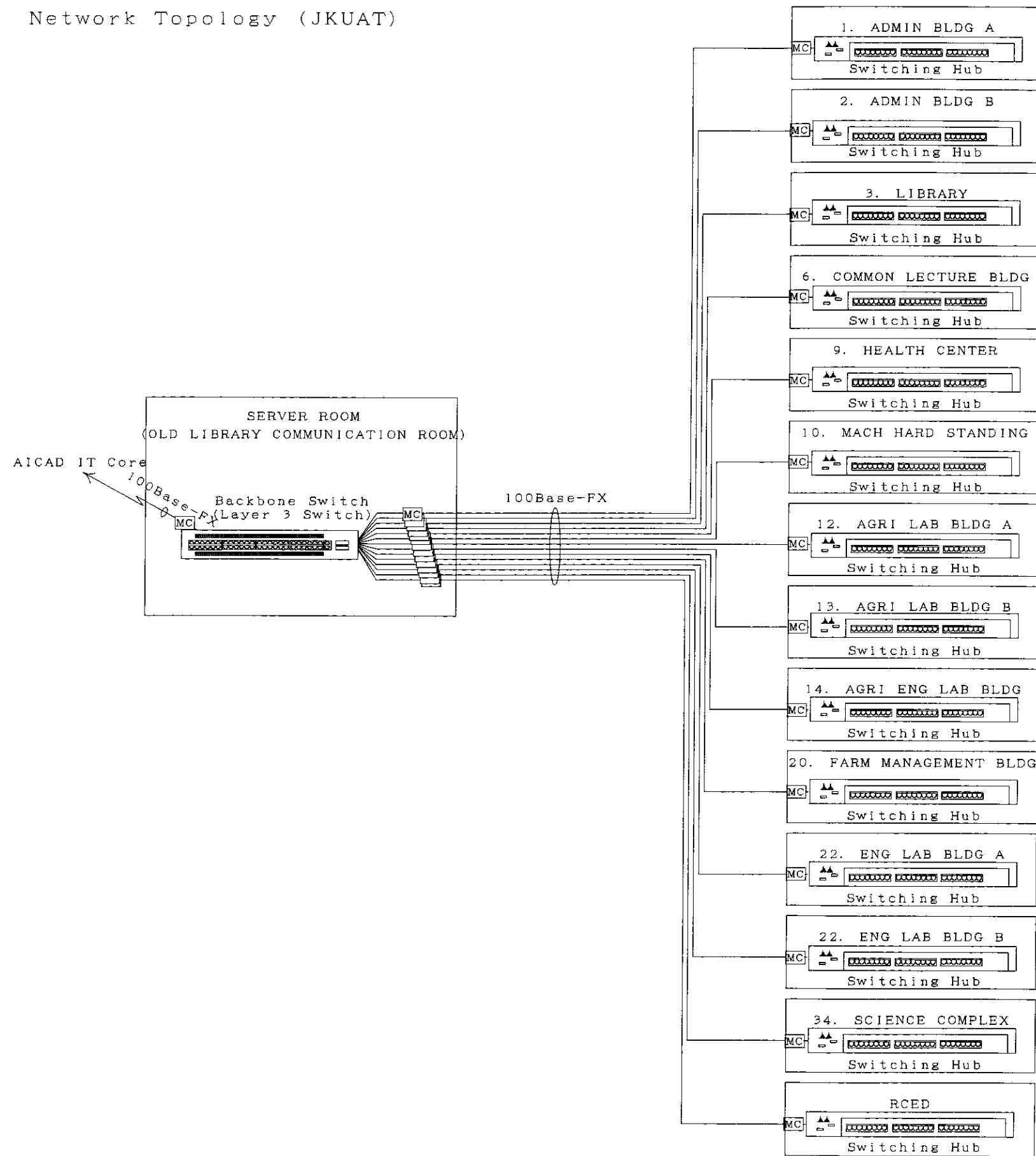
PROJECT TITLE THE BASIC DESIGN STUDY ON THE PROJECT FOR ESTABLISHMENT OF THE AFRICAN INSTITUTE FOR CAPACITY DEVELOPMENT IN THE REPUBLIC OF KENYA	FACILITY DESIGN  PACIFIC CONSULTANTS INTERNATIONAL	SCALE 1:100	DATE 1 FEB. 2001	DRG. TITLE SECTION	DRG. NO. 7
--	--	----------------	---------------------	-----------------------	---------------

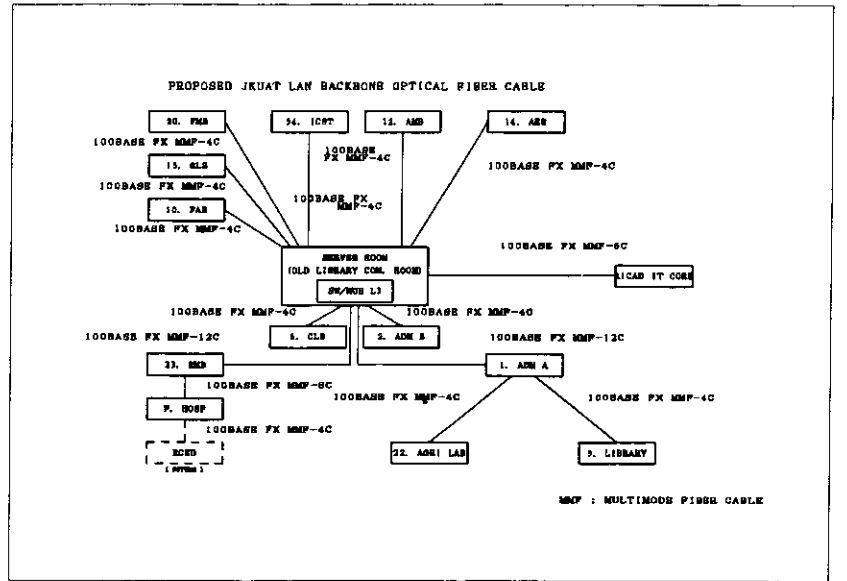
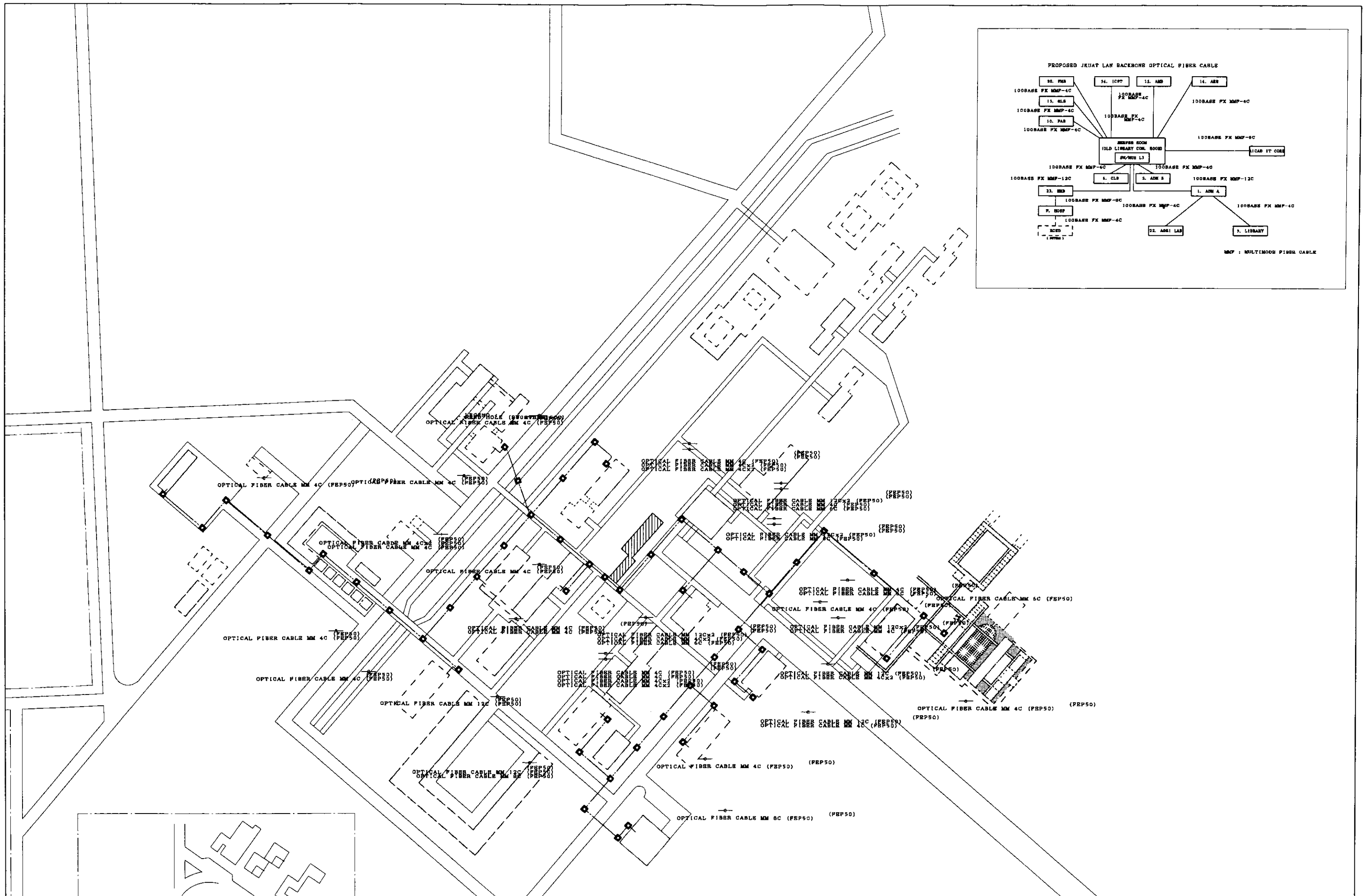


# Network Topology

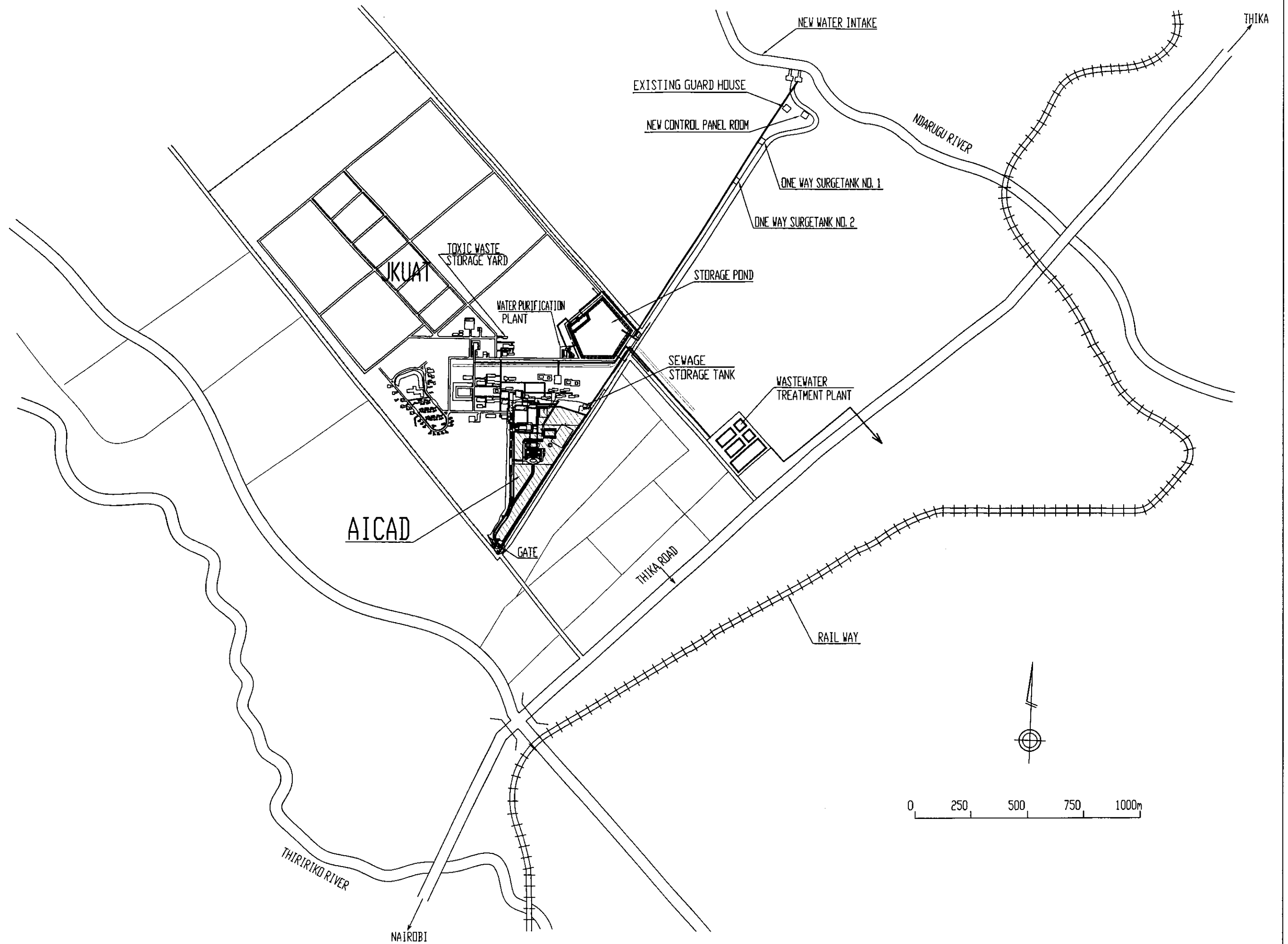


Network Topology (JKUAT)

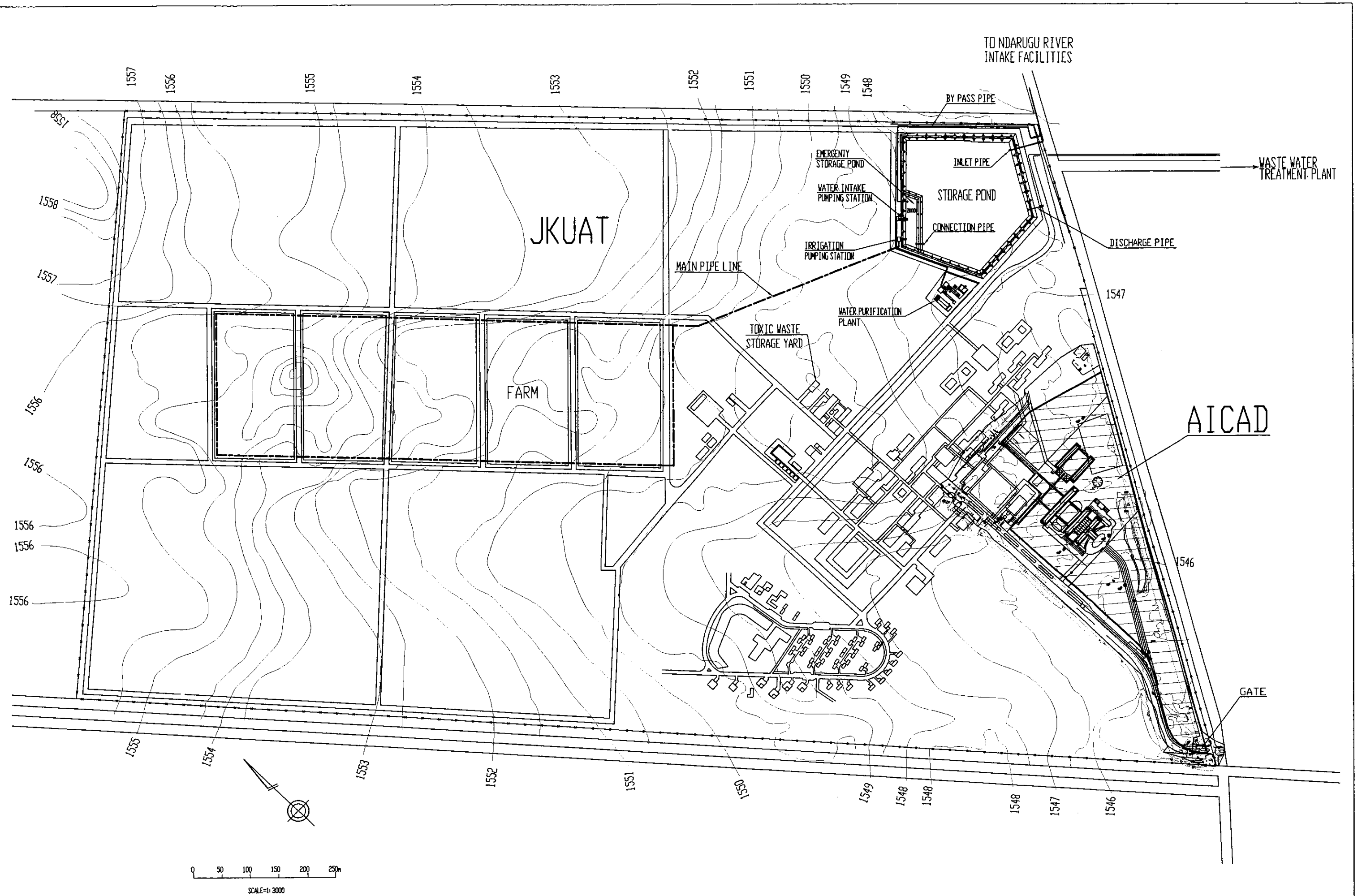




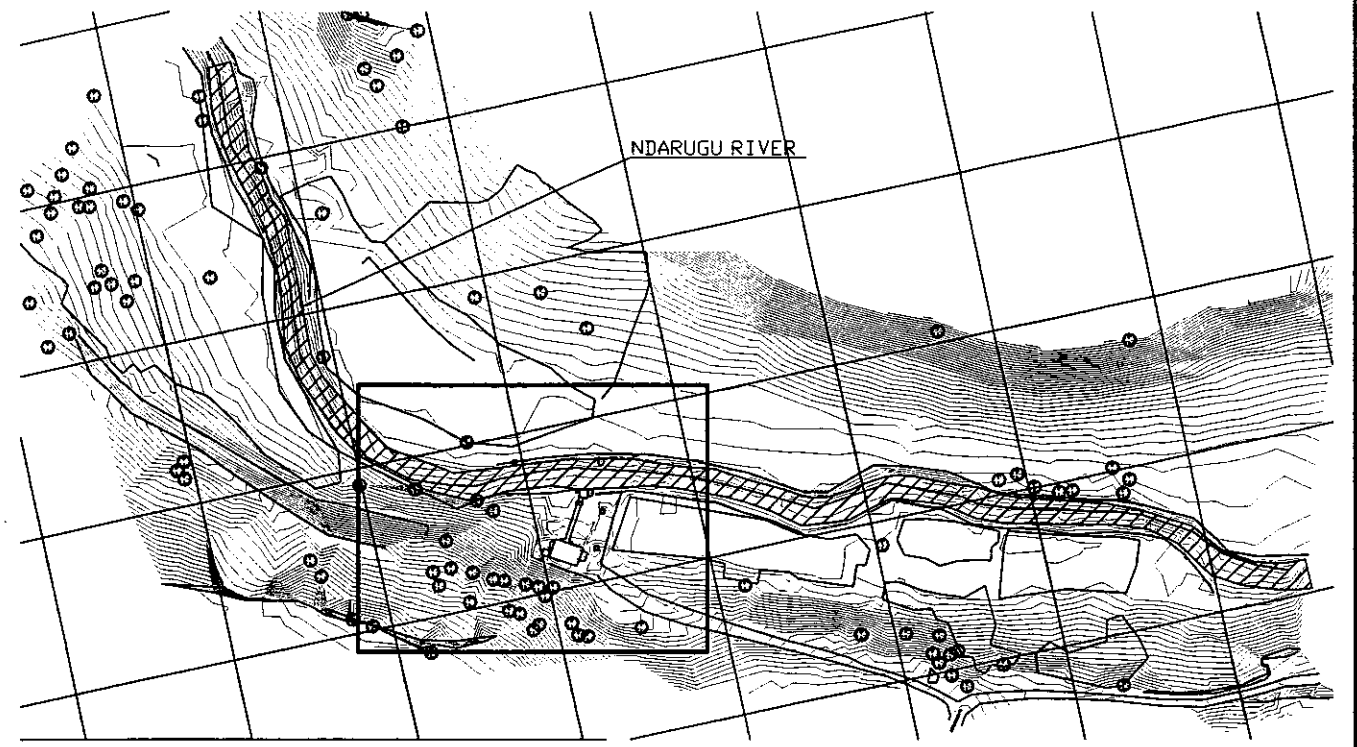
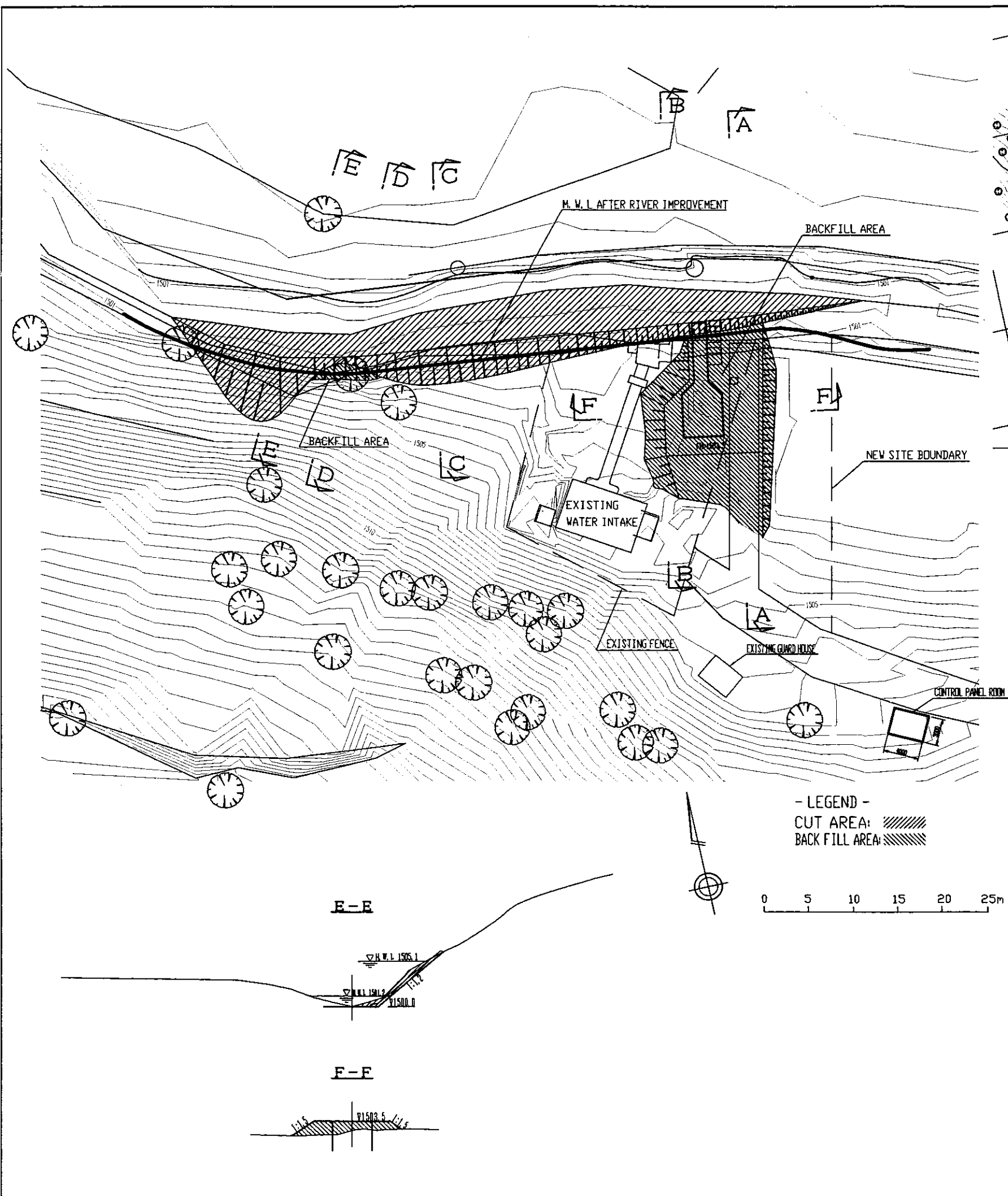
PROJECT TITLE THE BASIC DESIGN STUDY ON THE PROJECT FOR ESTABLISHMENT OF THE AFRICAN INSTITUTE FOR CAPACITY DEVELOPMENT IN THE REPUBLIC OF KENYA	FACILITY DESIGN  PACIFIC CONSULTANTS INTERNATIONAL	SCALE N. S	DATE MARCH, 2001	DWG. TITLE SITE PLAN FOR JKUAT BACKBONE	DWG. NO. IT-3
--	--	---------------	---------------------	--	------------------



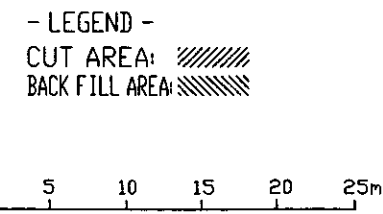
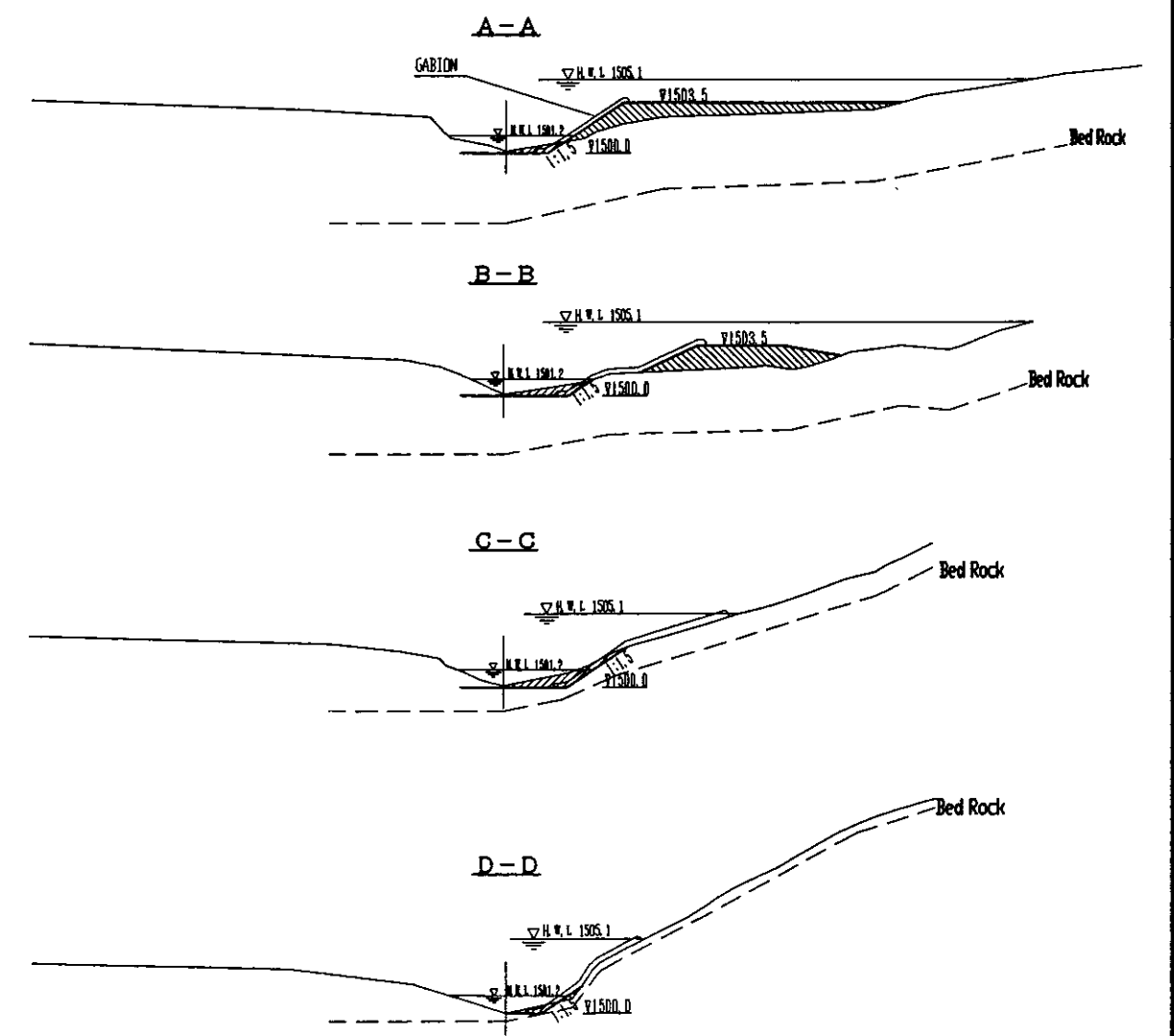
<p>PROJECT TITLE</p> <p>THE BASIC DESIGN STUDY ON THE PROJECT FOR ESTABLISHMENT OF THE AFRICAN INSTITUTE FOR CAPACITY DEVELOPMENT IN THE REPUBLIC OF KENYA</p>	<p>FACILITY DESIGN</p> <p>PACIFIC CONSULTANTS INTERNATIONAL</p>	<p>SCALE</p> <p>1 : 8000</p>	<p>DATE</p> <p>MAR . 2001</p>	<p>DWG. TITLE</p> <p>LAYOUT WATER SUPPLY AND SEWAGE FACILITIES FOR JKUAT</p>	<p>DWG. NO.</p> <p>W-1</p>
--	---	------------------------------	-------------------------------	--	----------------------------



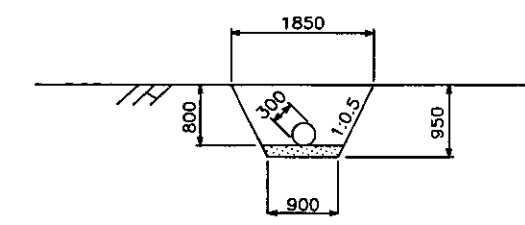
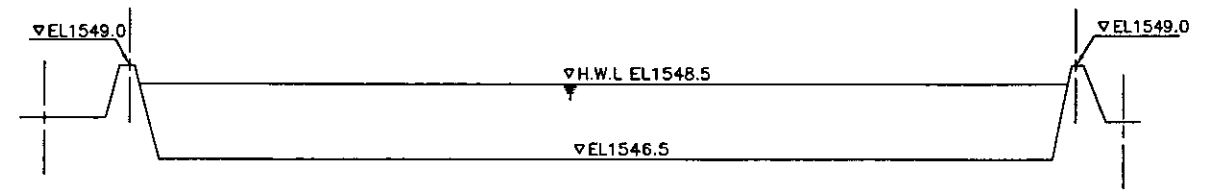
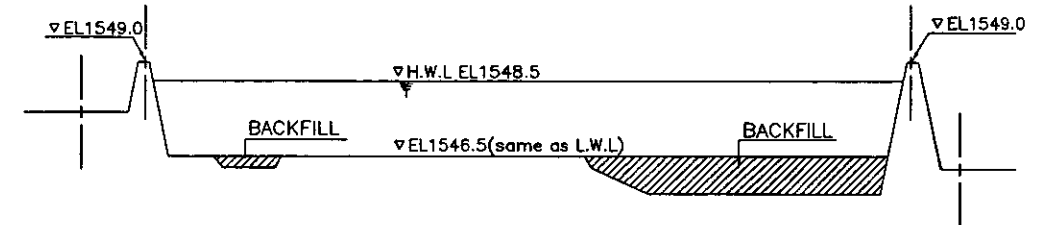
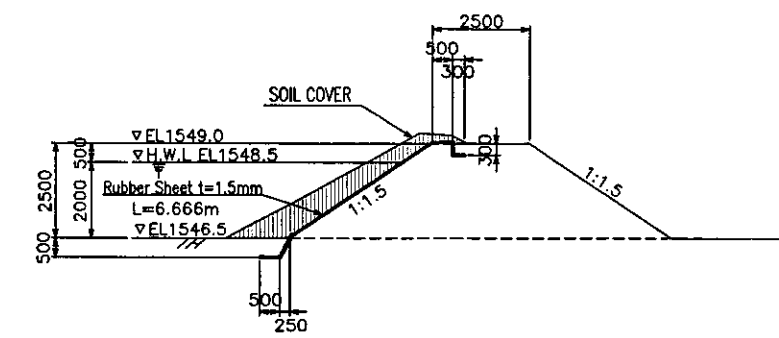
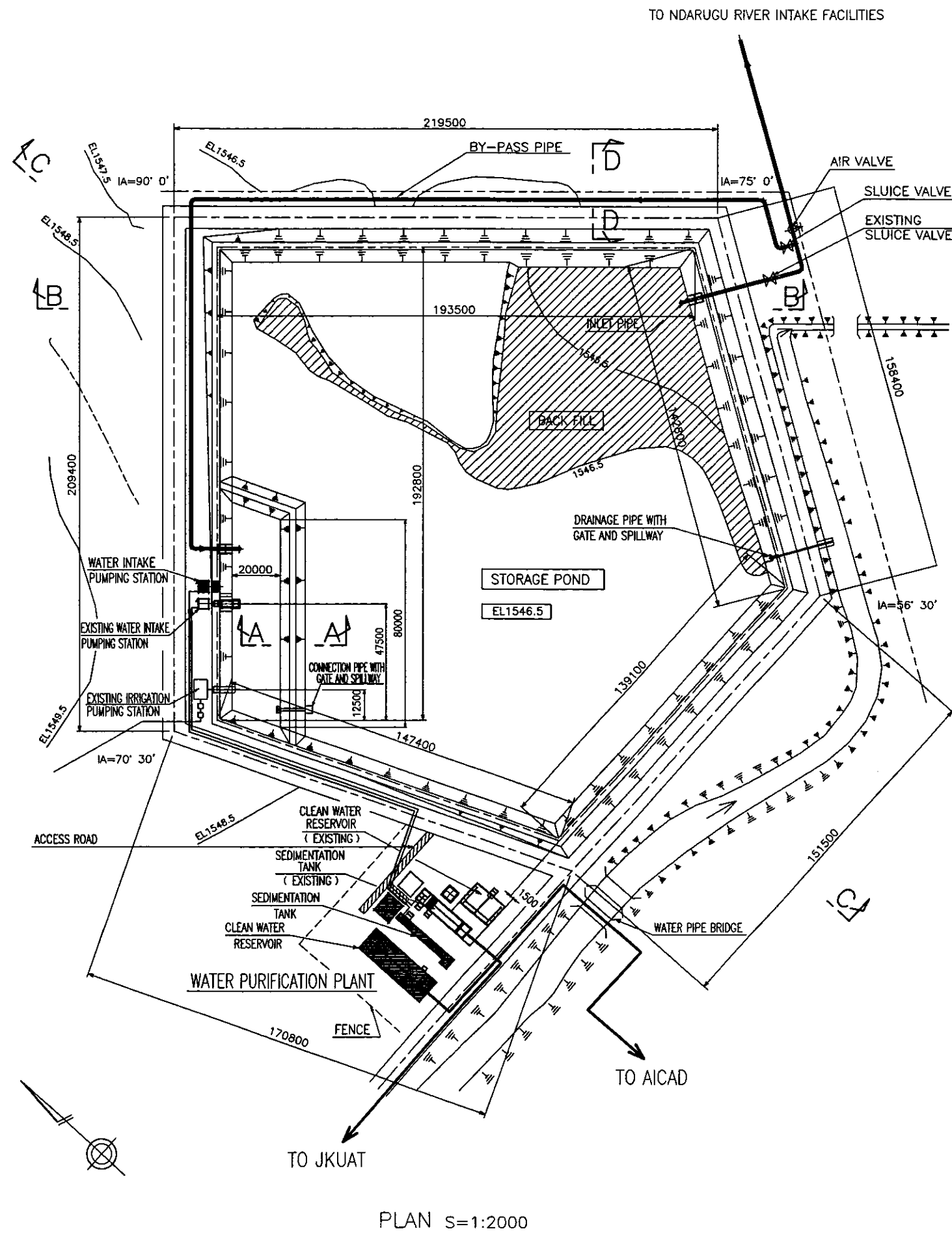
PROJECT TITLE THE BASIC DESIGN STUDY ON THE PROJECT FOR ESTABLISHMENT OF THE AFRICAN INSTITUTE FOR CAPACITY DEVELOPMENT IN THE REPUBLIC OF KENYA	FACILITY DESIGN  PACIFIC CONSULTANTS INTERNATIONAL	SCALE 1:3000	DATE MAR. 2001	DWG. TITLE LAYOUT OF WATER SUPPLY FACILITIES IN JKUAT	DWG. NO. W-2
--	--	-----------------	-------------------	---	-----------------



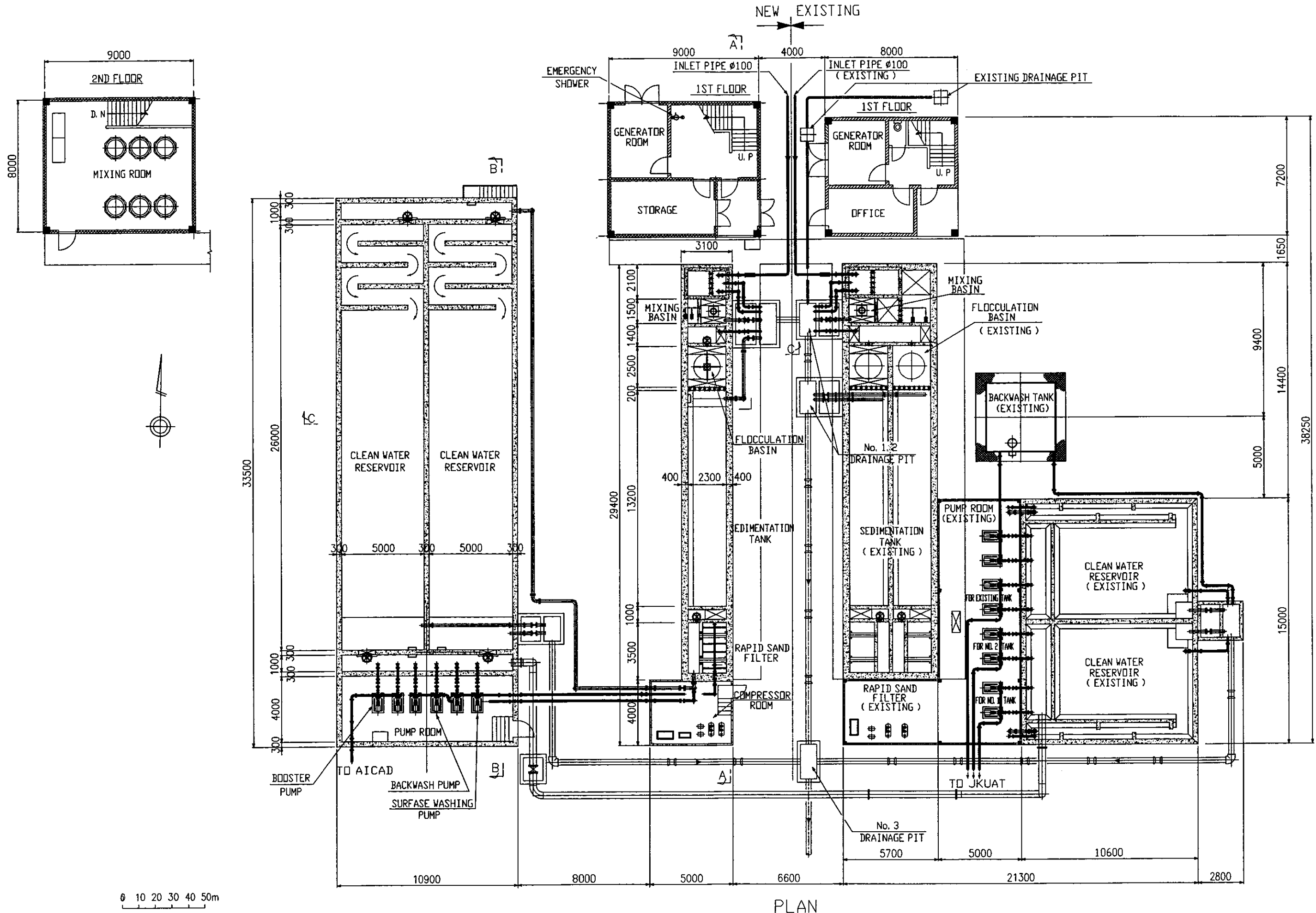
KEY PLAN (EXISTING CONDITION)



<p>PROJECT TITLE          THE BASIC DESIGN STUDY ON          THE PROJECT FOR ESTABLISHMENT OF          THE AFRICAN INSTITUTE FOR CAPACITY DEVELOPMENT          IN THE REPUBLIC OF KENYA</p>	<p>FACILITY DESIGN          PACIFIC CONSULTANTS INTERNATIONAL</p>	<p>SCALE          1:500</p>	<p>DATE          MAR. 2001</p>	<p>DWG. TITLE          RIVER IMPROVEMENT AROUND          WATER INTAKE FACILITIES</p>	<p>DWG. NO.          W-3</p>
---	---	---------------------------------	------------------------------------	--	----------------------------------



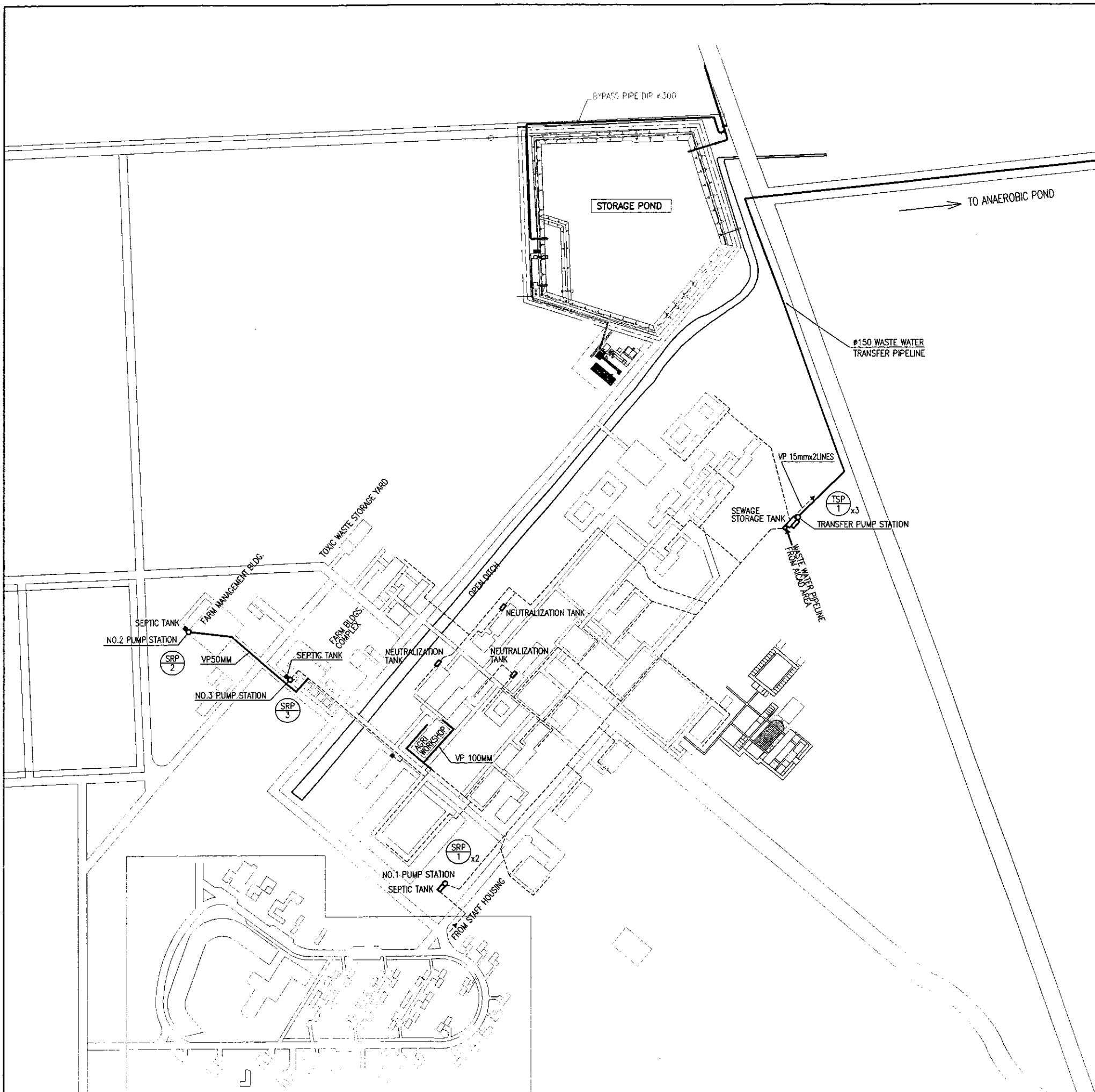
PROJECT TITLE THE BASIC DESIGN STUDY ON THE PROJECT FOR ESTABLISHMENT OF THE AFRICAN INSTITUTE FOR CAPACITY DEVELOPMENT IN THE REPUBLIC OF KENYA	FACILITY DESIGN PACIFIC CONSULTANTS INTERNATIONAL	SCALE SEE EACH INDICATION	DATE MAR. 2001	DWG. TITLE LAYOUT OF WATER SUPPLY FACILITIES AROUND STORAGE POND	DWG. NO W-4
--	--	---------------------------------	-------------------	--	----------------



PLAN

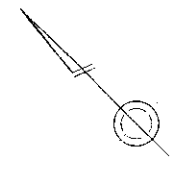
<p>PROJECT TITLE          THE BASIC DESIGN STUDY ON          THE PROJECT FOR ESTABLISHMENT OF          THE AFRICAN INSTITUTE FOR CAPACITY DEVELOPMENT          IN THE REPUBLIC OF KENYA</p>	<p>FACILITY DESIGN          PACIFIC CONSULTANTS INTERNATIONAL</p>	<p>SCALE          1:150</p>	<p>DATE          MAR. 2001</p>	<p>DWG. TITLE          WATER PURIFICATION PLANT PLAN</p>	<p>DWG. NO.          W-5</p>
---	---	---------------------------------	------------------------------------	--	----------------------------------

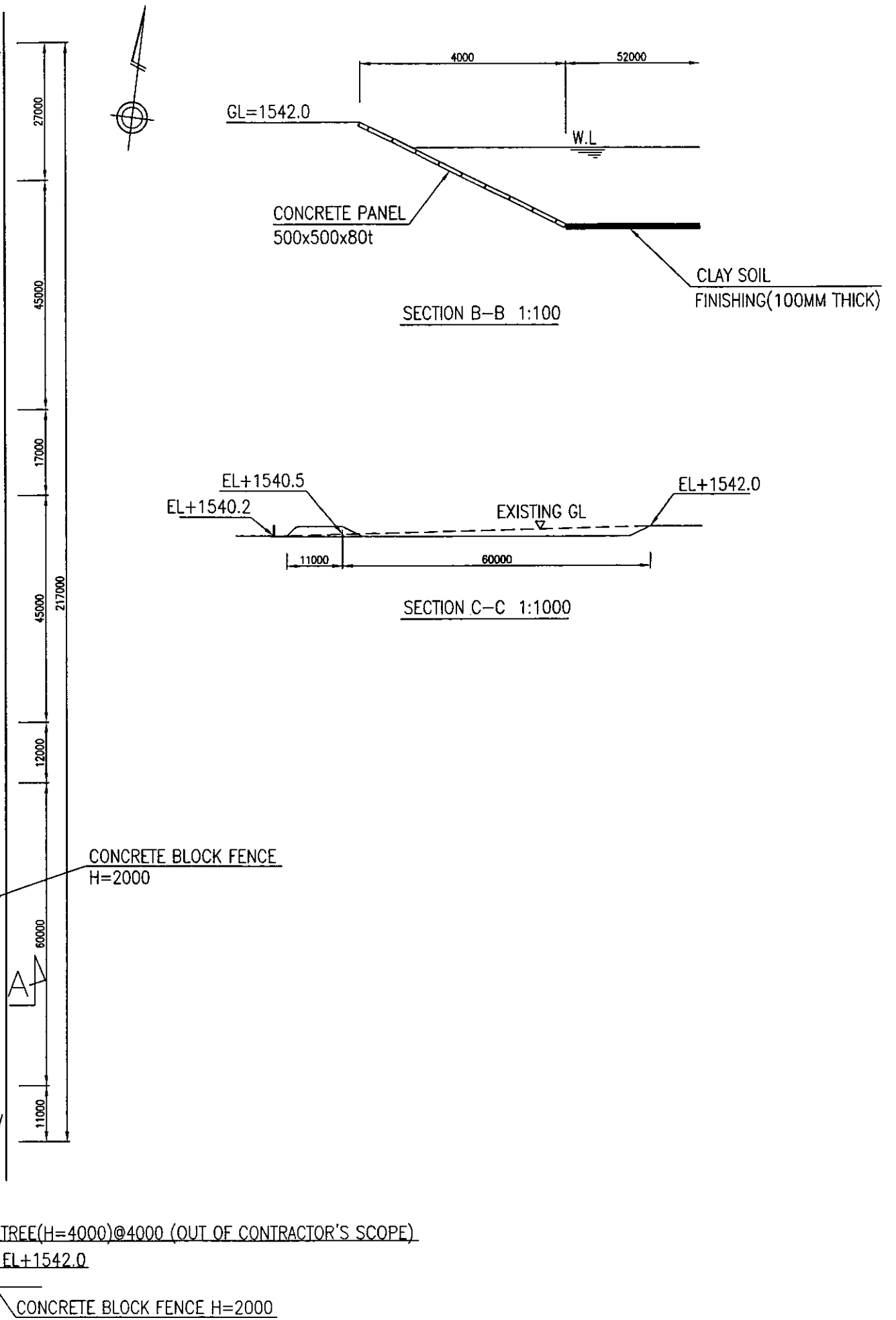
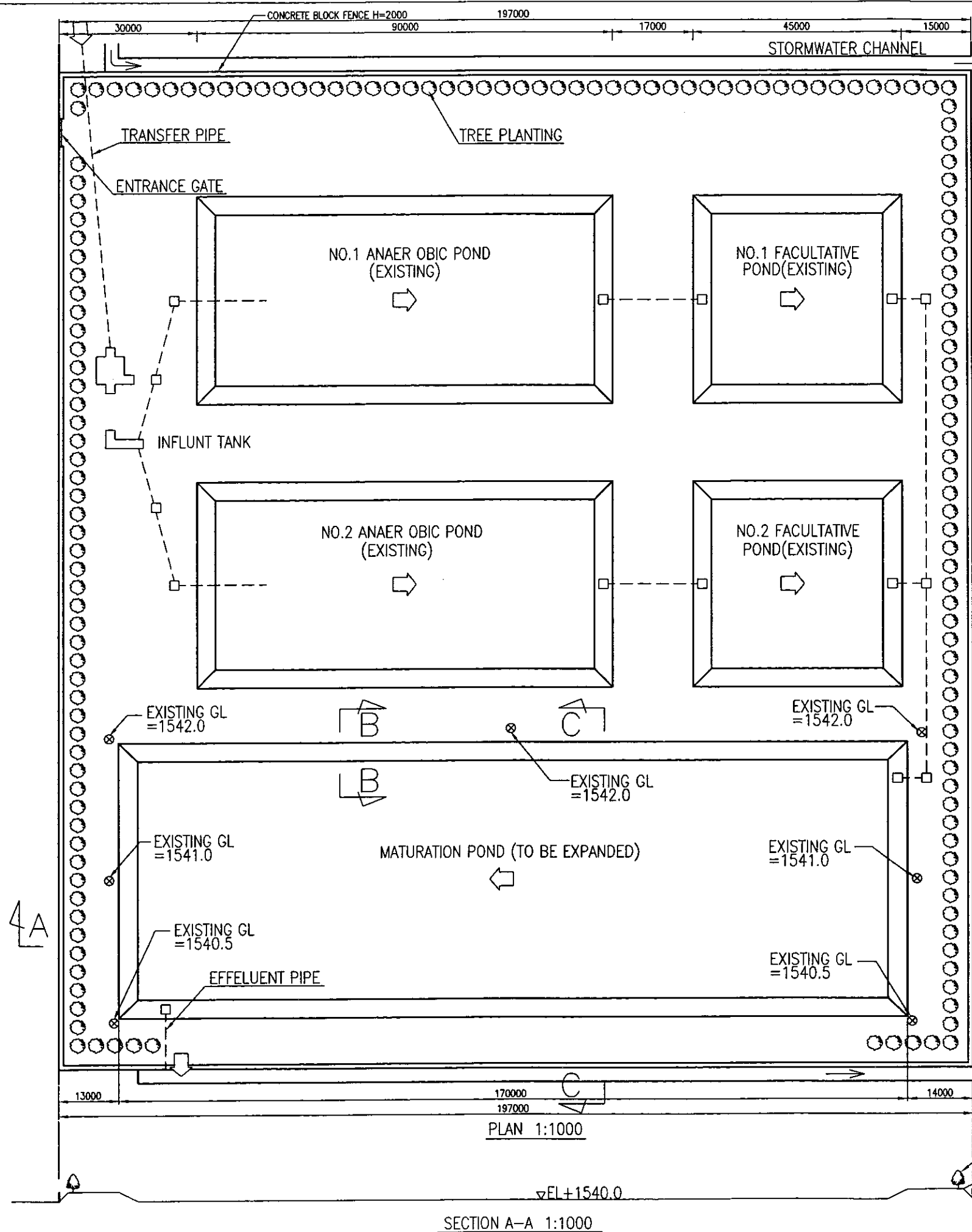




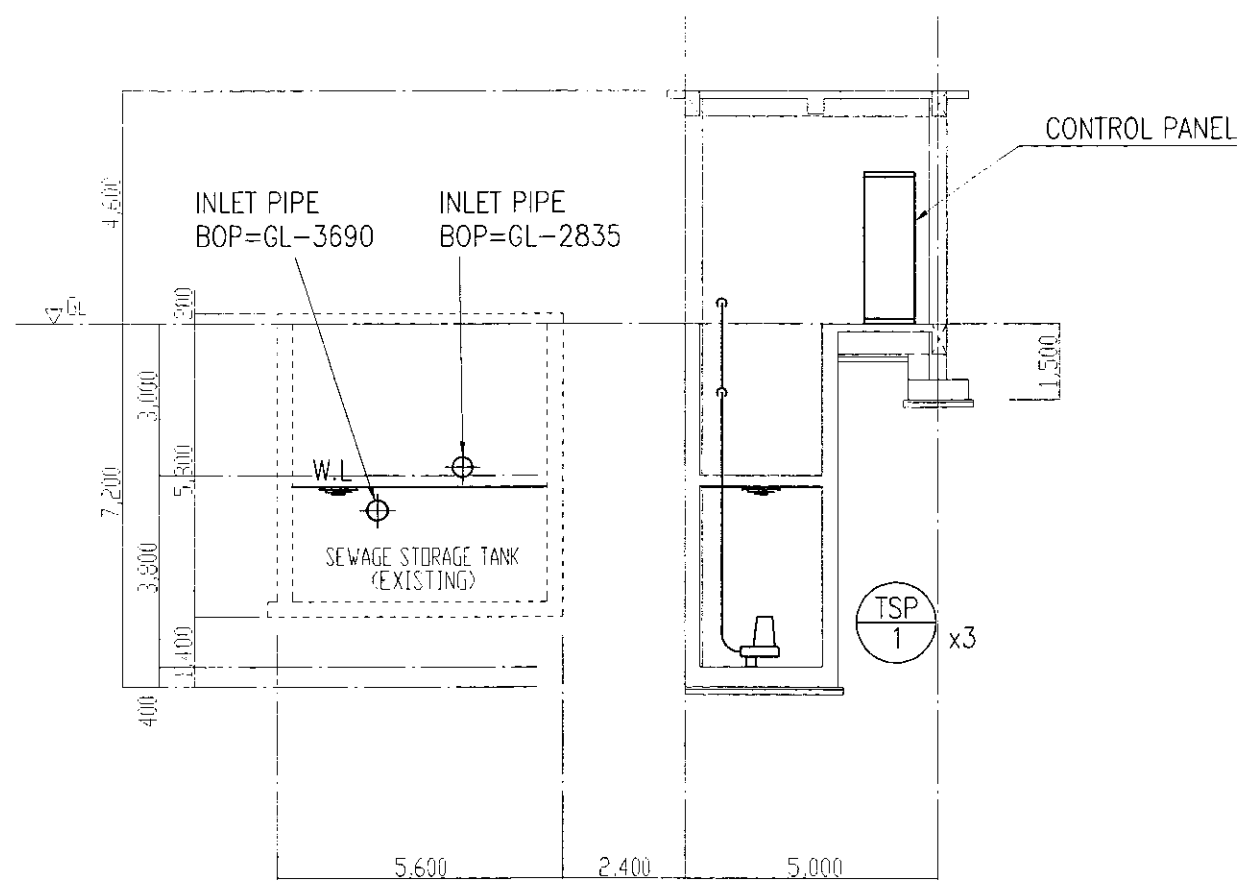
EQUIPMENT SCHEDULE							
EQUIP. NO.	EQUIPMENT	SPECIFICATION	PH/VOLTAGE (50HZ)	POWER kW	Qty	LOCATION	
TSP-1	TRANSFER PUMP	SUBMERSIBLE PUMP 1.4 m <sup>3</sup> /min x 22.0 mAq W/SUBMERSIBLE CABLE, QUICK DISCHARGE CONNECTED TYPE CONTROL PANEL(11 kw x 3Nos.) ACCESSORIES 1 No. 100% STANDBY	3ø 415V	1ø 240V	11	3 TRANSFER PUMP STATION	
SRP-1	NO.1 RELAY PUMP	SUBMERSIBLE PUMP 0.4 m <sup>3</sup> /min x 15.0 mAq W/SUBMERSIBLE CABLE, QUICK DISCHARGE CONNECTED TYPE CONTROL PANEL(3.70 kw x 2Nos.) ACCESSORIES ALTERNATING OPERATION	Ø	-	3.70	2 NO.1 PUMP STATION	
SRP-2	NO.2 RELAY PUMP	SUBMERSIBLE PUMP 0.05 m <sup>3</sup> /min x 13.0 mAq W/SUBMERSIBLE CABLE, QUICK DISCHARGE CONNECTED TYPE CONTROL PANEL(0.75 kw x 1No.) ACCESSORIES	Ø	-	0.75	1 NO.2 PUMP STATION	
SRP-3	NO.3 RELAY PUMP	SUBMERSIBLE PUMP 0.05 m <sup>3</sup> /min x 13.0 mAq W/SUBMERSIBLE CABLE, QUICK DISCHARGE CONNECTED TYPE CONTROL PANEL(0.75 kw x 1No.) ACCESSORIES	Ø	-	0.75	1 NO.3 PUMP STATION	

- - - - - EXITING WASTE WATER PIPE  
 ————— NEW WASTE WATER PIPE

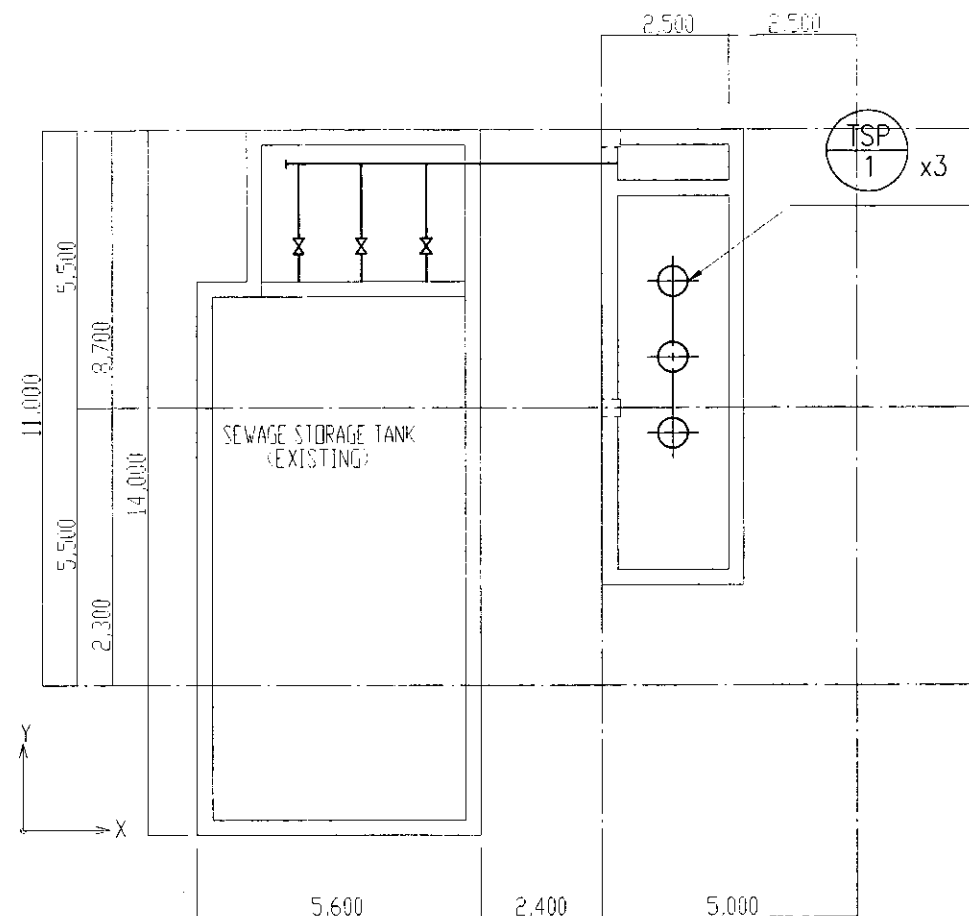




PROJECT TITLE THE BASIC DESIGN STUDY ON THE PROJECT FOR ESTABLISHMENT OF THE AFRICAN INSTITUTE FOR CAPACITY DEVELOPMENT IN THE REPUBLIC OF KENYA	FACILITY DESIGNER PACIFIC CONSULTANTS INTERNATIONAL	SCALE SEE EACH INDICATION	DATE MAR. 2001	DWG. TITLE WASTEWATER TREATMENT PLANT	DWG. NO. S-2
--	--	---------------------------------	-------------------	--	-----------------

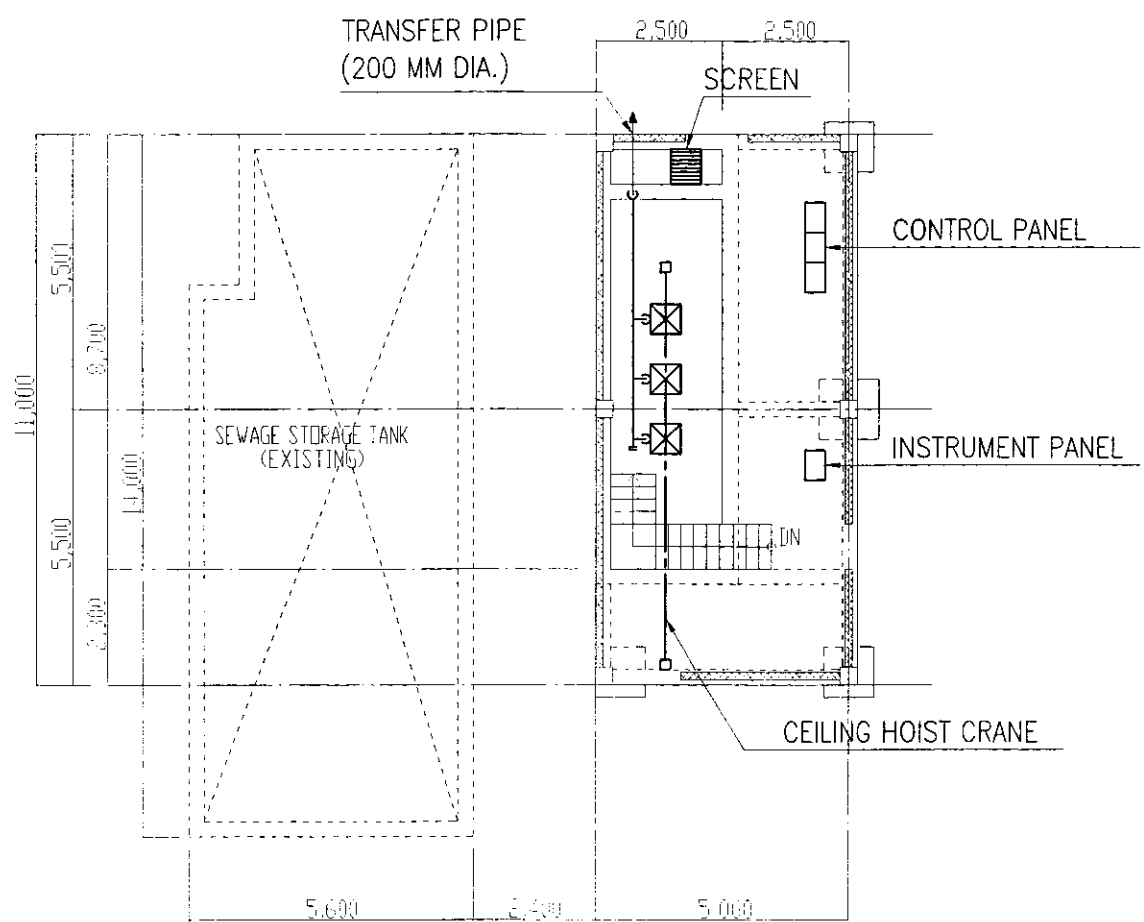


FRAMING ELEVATION 1:150



FOUNDATION PLAN 1:150

PLAN VIEW (G.L.-5.0M)



PLAN VIEW (G.L.+2.0M)

IFL FRAMING PLAN 1:150

EQUIPMENT SCHEDULE						
EQUIP. NO.	EQUIPMENT	SPECIFICATION	PH/VOLTAGE (50HZ)	POWER KW	Q'ty	LOCATION
TSP-1	TRANSFER PUMP	SUBMERSIBLE PUMP 1.4 m <sup>3</sup> /min x 22 mAq W/SUBMERSIBLE CABLE, QUICK DISCHARGE CONNECTED TYPE CONTROL PANEL(7.50 kw x 3Nos.) ACCESSORIES 1 No. 100% STANDBY	3*415V 1*240V	11 KW	3	TRANSFER PUMP STATION

Agreed Equipment List		
	Q'ty	M/D No
1. Equipment for AICAD		
A. Administration Division		
PC for Administrative Staff Use	3	1
PC for Coordinator	2	1
PC for Adviser	2	1
PC for Secretary	3	1
PC for Accounting	7	1
Printer	3	1
UPS	2	1
Vehicles	1	1
TV set	1	1
LCD projection system	1	1
Spare Parts for Repairing	1set	1
B. Research and Development Division		
PC for R&D coordinator	1	1
PC for Adviser	1	1
Printer	2	1
TV set	1	1
UPS	2	1
Desk/Chair	1set	1
Sofa/table	5	1
Steel shelf / Cabinet	1set	1
C. Training/Extension Division		
PC for students training	30	1
PC for T/E Coordinator	2	1
PC for Adviser	1	1
PC for Secretary	1	1
PC for Teaching	1	1
Printer	2	1
OHP	3	1
TV set	2	1
LCD projection system	2	1
PA set	1set	1
UPS	4	1
Desk chair	32	1
Steel shelf / Cabinet	1set	1
Folding table/chair for seminar room	1set	1
Monitor	1	1
D. Information Division		
PC for Info. staff	2	1
PC for coordinator	1	1
PC for Adviser	1	1
PC for Secretary	1	1
PC for reference	1	1
PC for Library	3	1
PC for e-Library	4	1
Printer	3	1
Video Booth	1	1
TV set	1	1
LCD projection system	1	1
UPS	13	1
Server	3	1
Desk/Chair	1set	1
Steel shelf / Cabinet	1set	1
IT Spare Parts	1set	1
E. Hostel Equipment		
Furniture for bed room	40 set	1
Desk/Chair	1 set	1
2. Equipment for JKUAT (Faculty of Agriculture)		
2-1 Horticulture Laboratory Equipment		
Portable photosynthetic System	1	2
Growth chamber	2	2
Freeze Drier	1	2
Spectrophotometer	1	2
Photocopier	1	2
Over Head Projector	1	2

	Q'ty	M/D No
2-2 Agricultural Engineering Equipment		
BOD mesuring units	1	3
2-3 Food Science and Postharvest Technology		
AA Spectrophotometer	1	2
HPLC	1	2
UV-VIS Spectrophotometer	2	2
Texturemeter	1	2
Soxhlet extractor	1	2
Microscope	1	2
Pilot scale expeller for food	1	2
Distillation apparatus	1	2
Kjeldhal distillation unit	3	2
Spectrophotometer	1	2
Polarimeter	1	2
pH meter	3	2
Gerber centrifuge	1	2
Colorimeter	2	2
Pressure tester	2	2
pH meters digital	3	2
Soxhlet apparatus	2	2
( Faculty of Engineering)		
2-4 Civil Engineering Department		
Deep Freezer	2	2
Autoclave	2	2
Incubator	2	2
pH meter	2	2
Turbidity meter	2	2
Jaw crusher mill	1	2
Photocopier	1	2
Over Head Projector	1	2
2-5 Mechanical Engineering		
Thermal conductivity apparatus	1	3
Attachment for Bomb calorimeter	1	3
Air compressor	1	3
Centrifugal pump	1	2
Solar distillation apparatus	1	3
Network of pipes apparatus	1	3
Multitube Manometer	1	3
Anemometer	1	3
Turbulent jet studies	1	3
Combined bending and torsion apparatus	1	2
Torsion testing machine	1	2
Educational robot	1	3
Torsional vibration apparatus	1	2
Photocopier	1	2
Over Head Projector	1	2
2-6 Electrical/Electronic Engineering		
Voltmeters/ammeters	10	2
Mini lathe machine	1	2
Converter trainer	1	3
Motor rewinding machine	1	3
Drilling machine	1	2
Oven	1	3
Digital servo trainer	1	2
Antenna trainer	1	2
Microwave trainer	1	2
Photocopier	1	2
Over Head Projector	1	2

	Q'ty	M/D No
(Faculty of Science)		
2-8 Department of Zoology		
VIS Spectrophotometer	1	3
Microscope with camera	1	3
Analytical balance	2	3
Cell counter	1	3
Photocopier	1	3
Over Head Projector	1	3
2-9 Department of Chemistry		
Infrared spectrophotometer	1	3
Water de-ioniser	1	3
Analytical balance	1	3
Photocopier	1	3
Over Head Projector	1	3
2-10 Department of Botany		
Laminar flow	2	3
Autoclave	1	3
Growth chamber	1	3
Distillation apparatus	1	3
2-11 Department of Biochemistry		
Spectrofluorimeter	1	3
Oven	1	3
2-12 Department of Physics		
Chiller	1	3
2-13 Department of Maths & Computer		
Photocopier	1	3
Over Head Projector	1	3
2-14 Institute of Computer Science and Information Technology		
Air Conditioner	1	3
Photocopier	1	3
Over Head Projector	1	3
2-15 Farm		
Demonstration Microscope	1	2
LCD Projector	1	2
2-16 Workshop		
Automatic saw sharpner	1	3
Single surface planner	1	3
Band sawing machine	1	3
Hacksaw machine	1	3
Power pipe threading machine	1	3
Abrasive cut off machine	1	3
Pipe drilling machine	1	3
Radial drilling machine	1	3
Welders	1	3
High temperature oven	1	3
Bench drilling machine	1	3
CNC Lathe	1	3
3. Water & Sewerage Equipment		
Leakage detecting rod	1	3
Ultrasonic flow meter	2	3
pH meter	1	3
Turbidity meter	1	3
Residual chlorine meter	1	3
Chemical drum	21	3
Drum carrier	2	3
Container for waste fluid	120	3
Cart	8	3
Electric hoist	1	3