

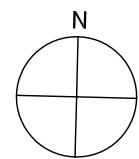
(CB) : CONCRETE BLOCK BLDG.

(M) : MUD BLDG.

(B) : BRICK BLDG.

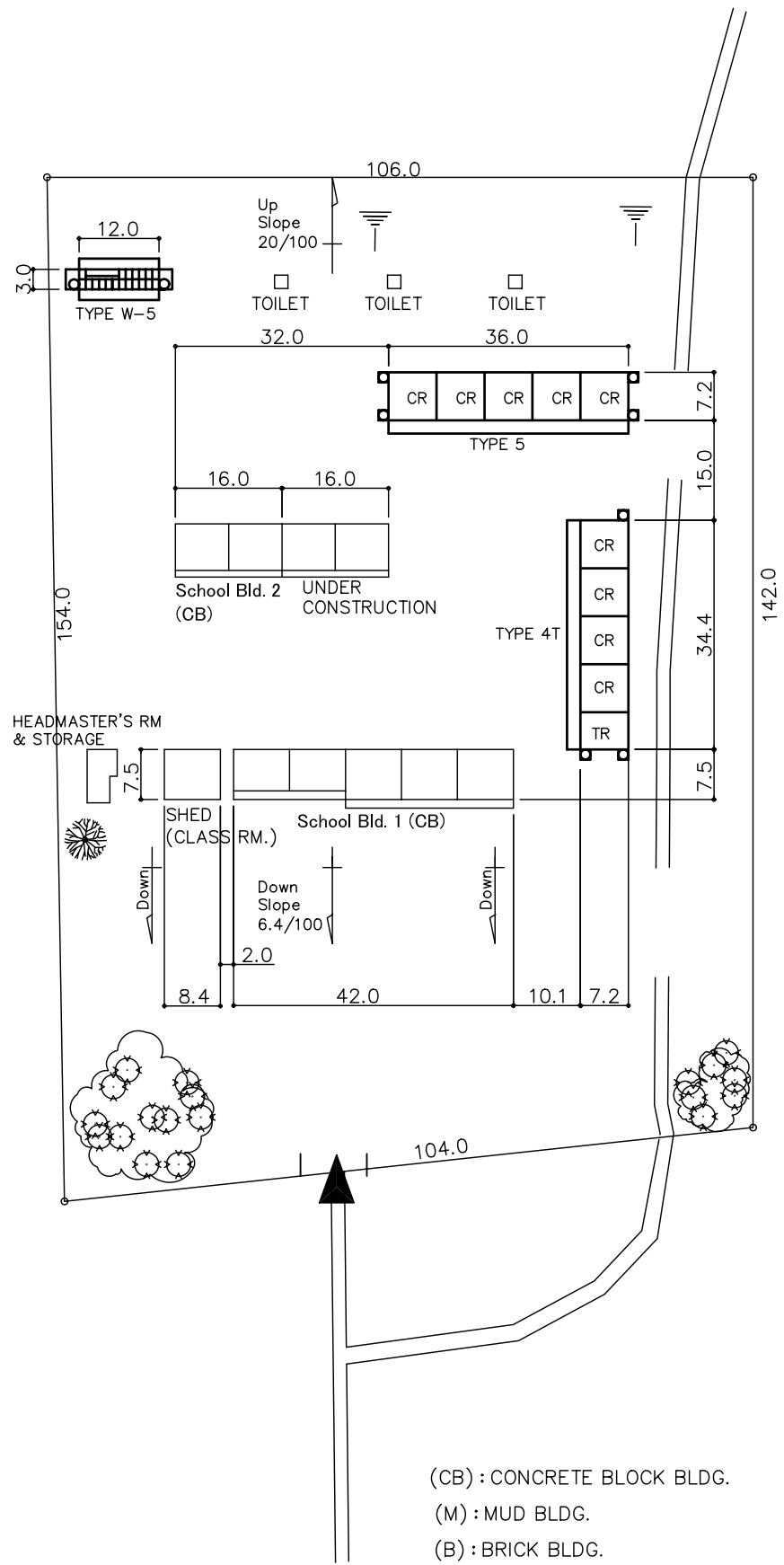
(W) : WOOD BLDG.

 : DISUSABLE CLASS RM.

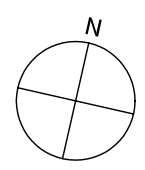


**SITE PLAN**

S: 1/1000



- (CB) : CONCRETE BLDG.
- (M) : MUD BLDG.
- (B) : BRICK BLDG.
- (W) : WOOD BLDG.
- : DISUSABLE CLASS RM.

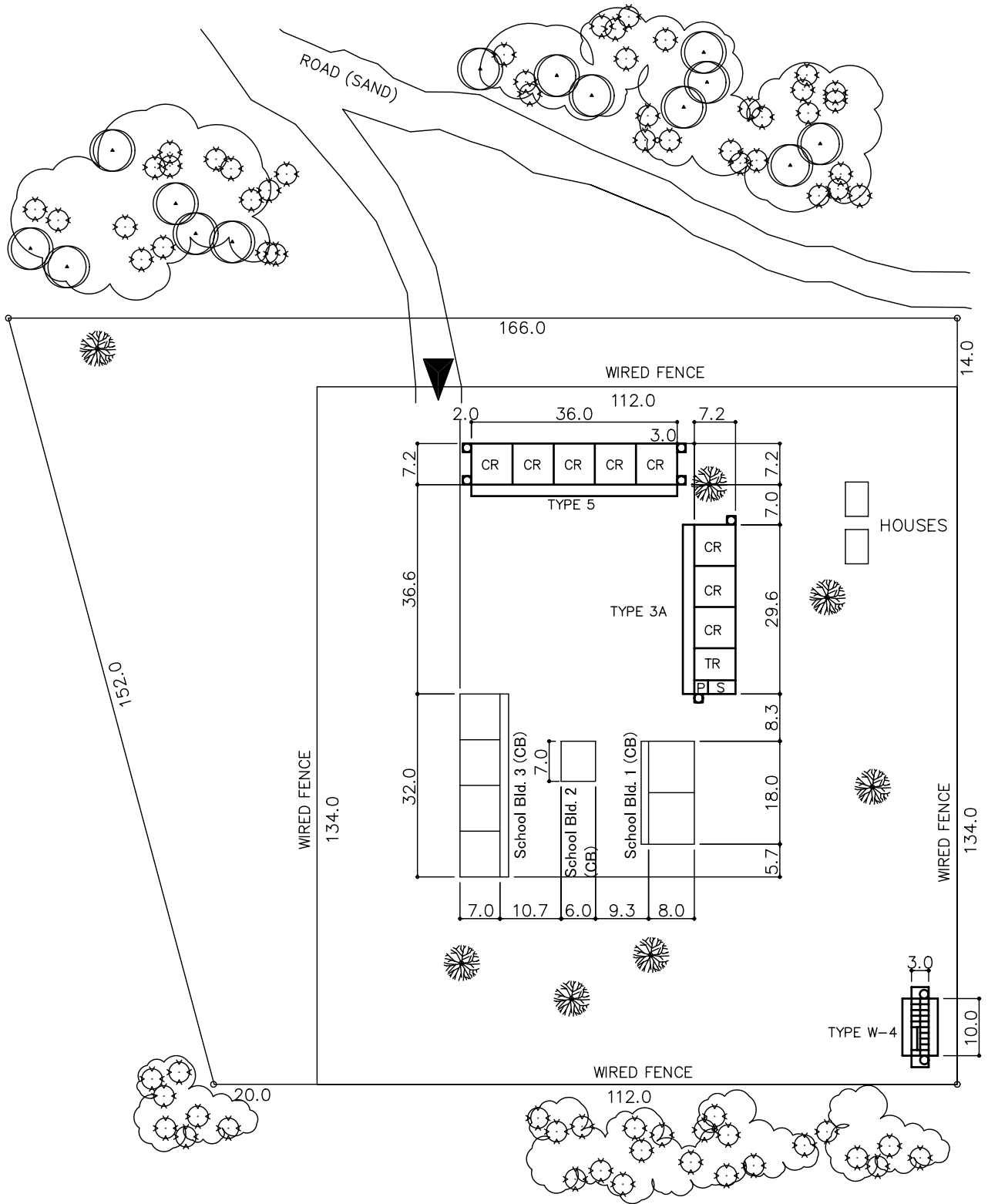


**SITE PLAN**  
S:1/1000

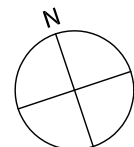
Date 2001-03-03

District, School Name ENKULISWENI

Site No. - 11



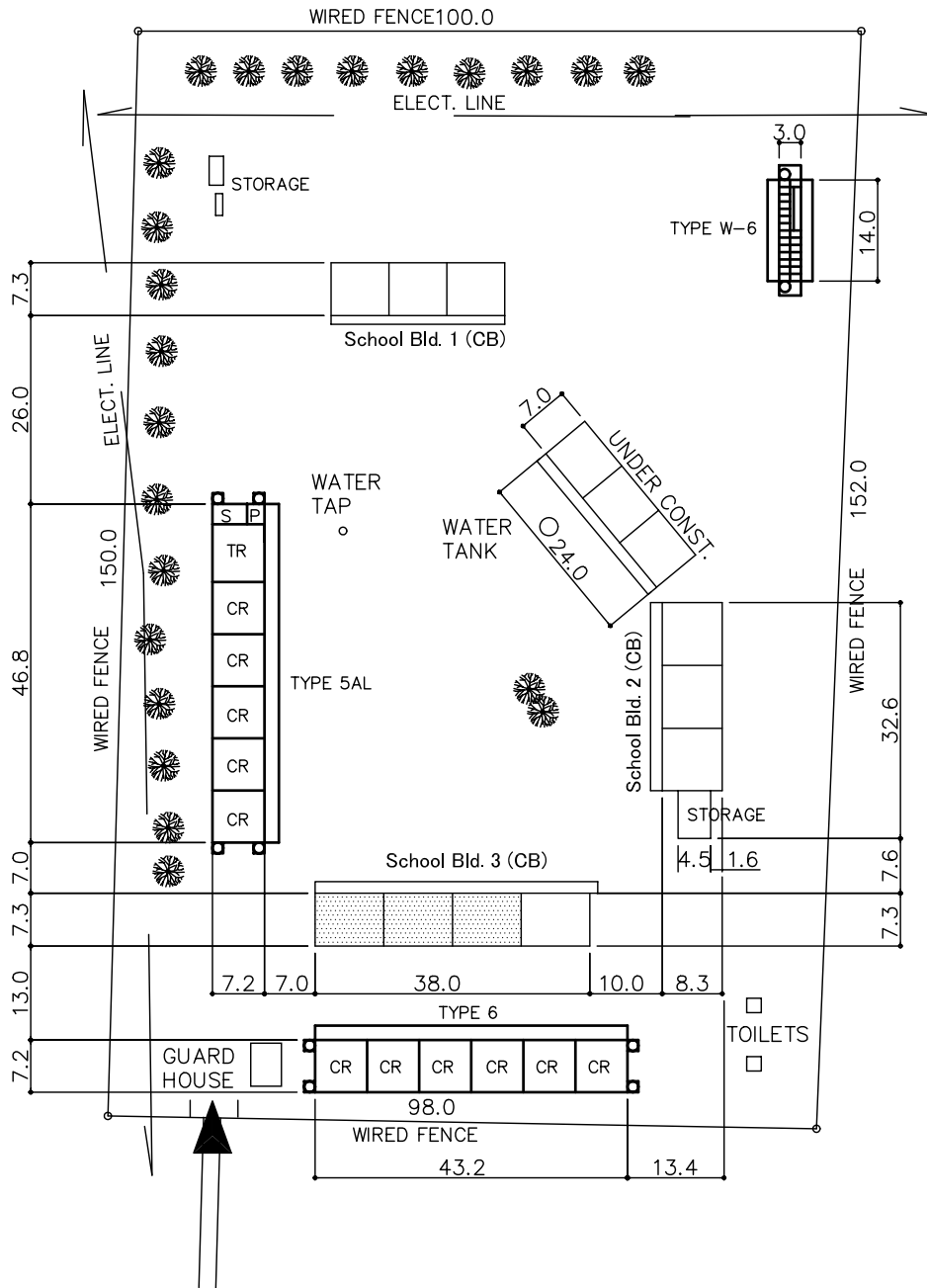
- (CB) : CONCRETE BLOCK BLDG.
- (M) : MUD BLDG.
- (B) : BRICK BLDG.
- (W) : WOOD BLDG.




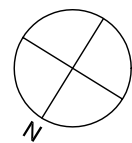
Date 2001-03-03

District, School Name **TENGANI**

Site No. - 13



- (CB) : CONCRETE BLOCK BLDG.
- (M) : MUD BLDG.
- (B) : BRICK BLDG.
- (W) : WOOD BLDG.
-  : DISUSABLE CLASS RM.



**SITE PLAN**  
S: 1/1000

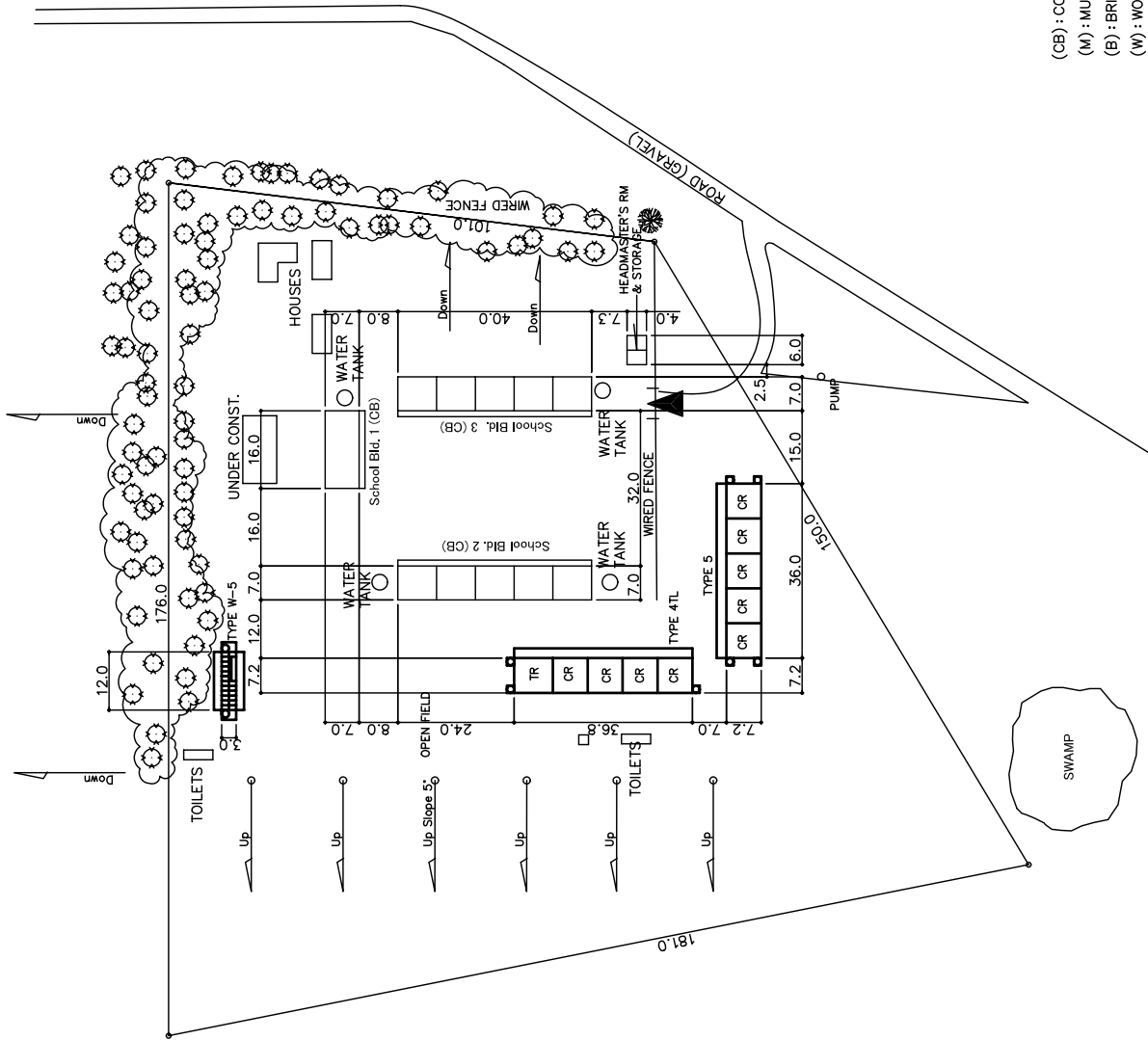
Date  
2001-03-06

District, School Name  
EKUHLEHLANI

Site No.  
- 14



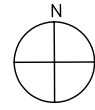
- (CB) : CONCRETE BLOCK BLDG.
- (M) : MUD BLDG.
- (B) : BRICK BLDG.
- (W) : WOOD BLDG.
- [Pattern] : DISUSABLE CLASS RM.




Date 2001-03-01

District, School Name ENDABENI

Site No. - 15



SITE PLAN  
S:1/1500

- (CB) : CONCRETE BLOCK BLDG.
- (M) : MUD BLDG.
- (B) : BRICK BLDG.
- (W) : WOOD BLDG.
-  : DISUSABLE CLASS RM.

