

Inventory Survey of Check Dams in the Intensive Area

Inventory ID No.

CD - 14

Page 1/2

Survey Date **19-Oct-00**

1) Location

Name of the Dam

Tandengan

Coordinate

01°13'51" N 124°55'47" E

Tandengan, Sub-district Eris

2) History

Year of construction

1984/1985

Government agency

BRLKT

3) Catchment Area

Sub-watershed No.

19

Name of the Downstream River

Tandengan 2

Catchment area

30 ha

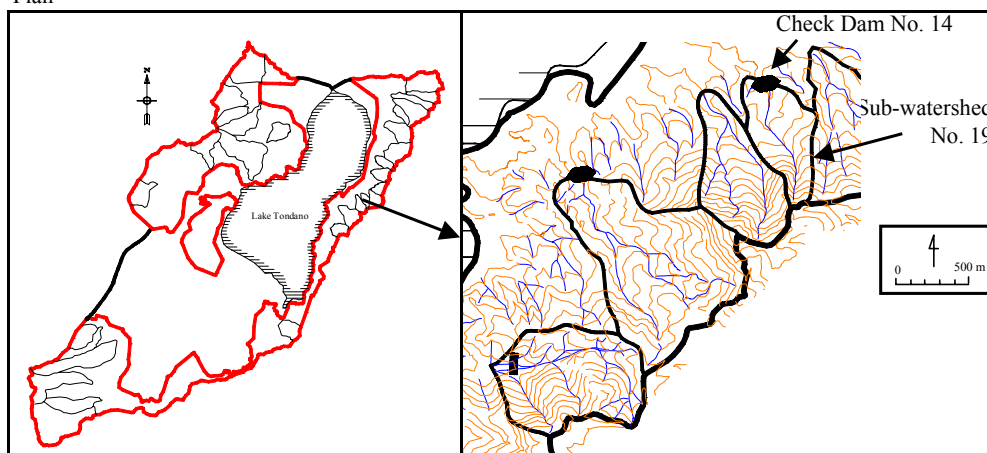
Estimated original river gradient

%

Landuse of the upstream

Estate

Plan



4) Dam Body

Dam Type

Earth Fill Dam

Crest Length

40.0 m

Dam Pengendali

Crest Width

4.0 m

D/S Slope

1:2.5 -

Dam Height

4.0 m

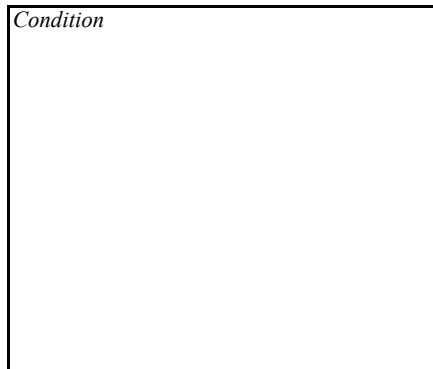
Note :

D/S = Downstream

View from upstream



Condition



**The Study on Critical Land and Protection Forest
Rehabilitation at Tondano Watershed
in the Republic of Indonesia**

Japan International Cooperation Agency

Figure HAT3.15

**Inventory Survey of Existing Check Dam
(CD-14) (1/2)**

Inventory Survey of Check Dams in the Intensive Area

Inventory ID No.

CD - 14

Page 2/2

Survey Date **19-Oct-00**

5) Spillway

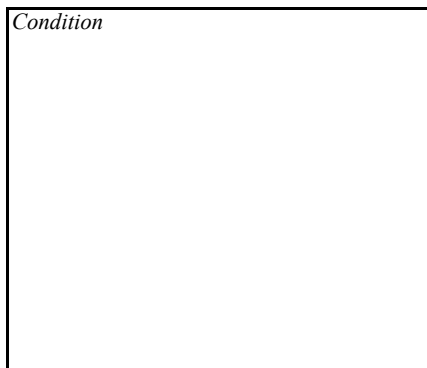
Spillway Bed Width **3.0** m
Spillway Height **1.0** m

Material **Wet Masonry**

View of spillway



Condition



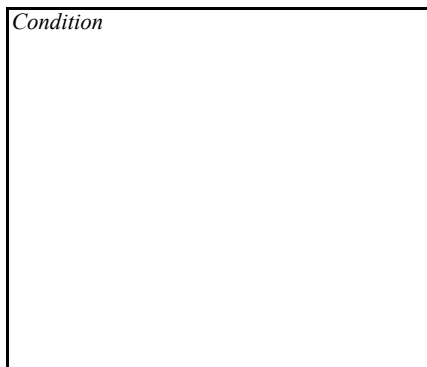
6) Intake Gate

Type **Sluice Gate**

View of intake gate



Condition



7) Water Supply

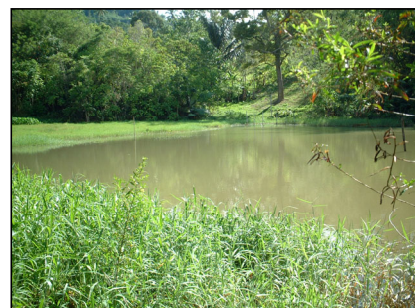
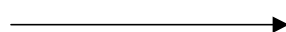
Intention for Water Supply	Yes
Purpose of Water Supply	Irrigation
Present Land Use of the Downstream	Paddy Field
Condition of Irrigation Facilities	Not functioning

8) Sedimentation

Status of Sediment Control	Functioning
Deposition Gradient	N/A %
Sedimentation Yield	N/A m ³
	N/A ton/ha/year

9) Dam Lake

General View of Dam Lake



**The Study on Critical Land and Protection Forest
Rehabilitation at Tondano Watershed
in the Republic of Indonesia**

Japan International Cooperation Agency

Figure HAT3.15

**Inventory Survey of Existing Check Dam
(CD-14) (2/2)**