

## Inventory Survey of Check Dams in the Intensive Area

Inventory ID No.

CD - 13

Page 1/2

Survey Date 18-Oct-00

### 1) Location

Name of the Dam

Eris

Coordinate

01°13'30" N

124°55'06" E

Eris, Sub-district Eris

### 2) History

Year of construction

1984/1985

Government agency

BRLKT

### 3) Catchment Area

Sub-watershed No.

17

Name of the Downstream River

Eris

Catchment area

100 ha

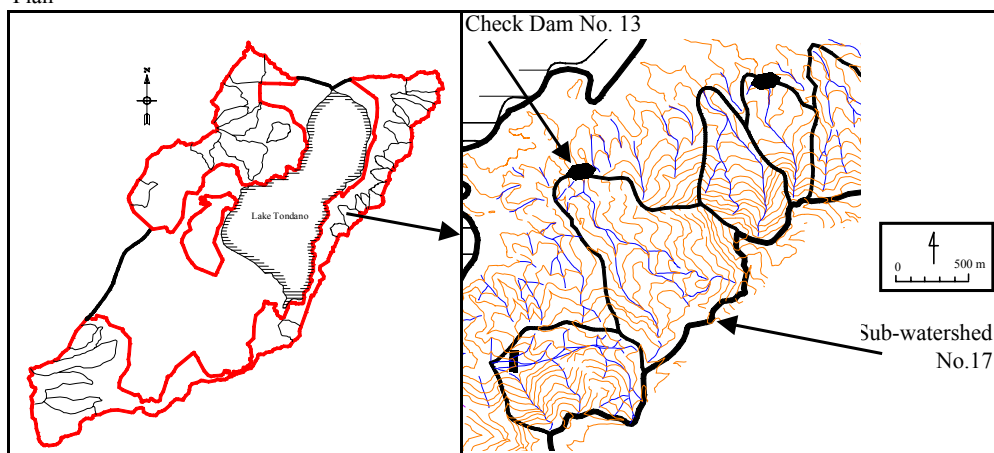
Estimated original river gradient

%

Landuse of the upstream

Estate

Plan



### 4) Dam Body

Dam Type

Earth Fill Dam

Crest Length

75.0 m

Dam Pengendali

Crest Width

4.0 m

D/S Slope

1:2.5

Dam Height

2.5 m

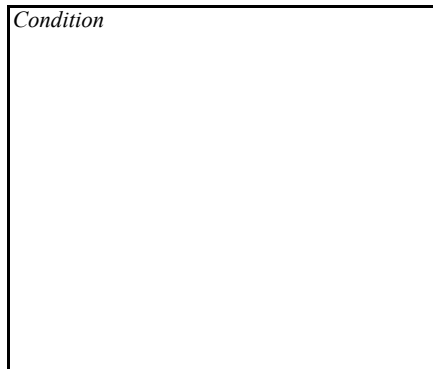
Note :

D/S = Downstream

View from upstream



Condition



The Study on Critical Land and Protection Forest  
Rehabilitation at Tondano Watershed  
in the Republic of Indonesia

Japan International Cooperation Agency

Figure HAT3.14

Inventory Survey of Existing Check Dam  
(CD-13) (1/2)

## Inventory Survey of Check Dams in the Intensive Area

Inventory ID No.

CD - 13

Page 2/2

Survey Date **18-Oct-00**

### 5) Spillway

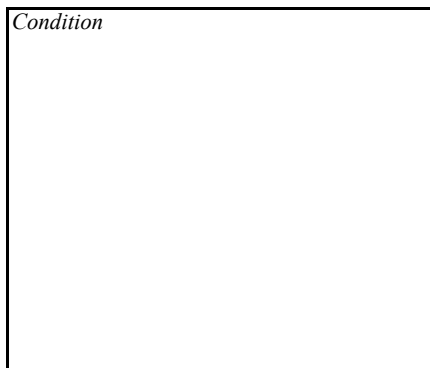
Spillway Bed Width **4.0** m  
Spillway Height **1.5** m

Material **Wet Masonry**

View of spillway



Condition



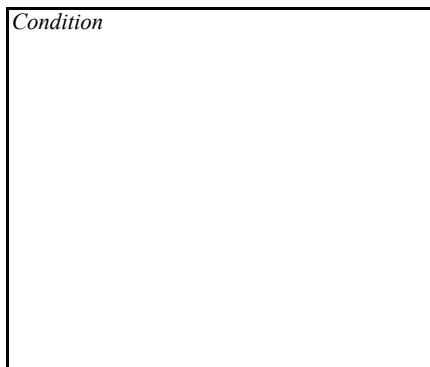
### 6) Intake Gate

Type **Sluice Gate**

View of intake gate



Condition



### 7) Water Supply

Intention for Water Supply	<b>Yes</b>
Purpose of Water Supply	<b>Inland Fishery</b>
Present Land Use of the Downstream	<b>Fish Pond</b>
Condition of Irrigation Facilities	<b>-</b>

### 8) Sedimentation

Status of Sediment Control	<b>Functioning</b>
Deposition Gradient	<b>N/A</b> %
Sedimentation Yield	<b>N/A</b> m <sup>3</sup>
	<b>N/A</b> ton/ha/year

### 9) Dam Lake

General View of Dam Lake



**The Study on Critical Land and Protection Forest  
Rehabilitation at Tondano Watershed  
in the Republic of Indonesia**

Japan International Cooperation Agency

**Figure HAT3.14**

**Inventory Survey of Existing Check Dam  
(CD-13) (2/2)**