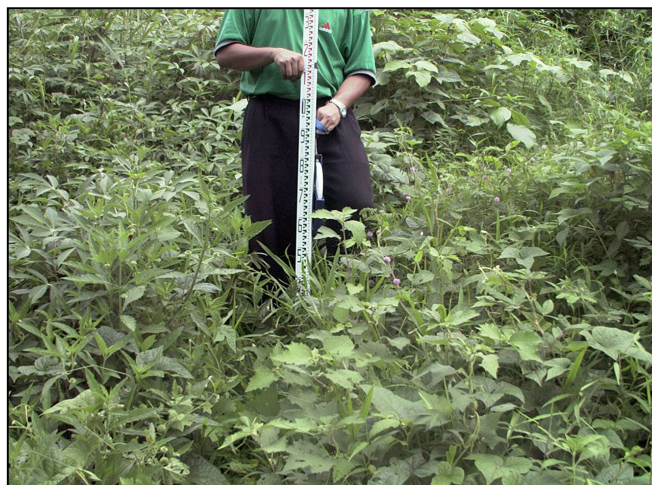
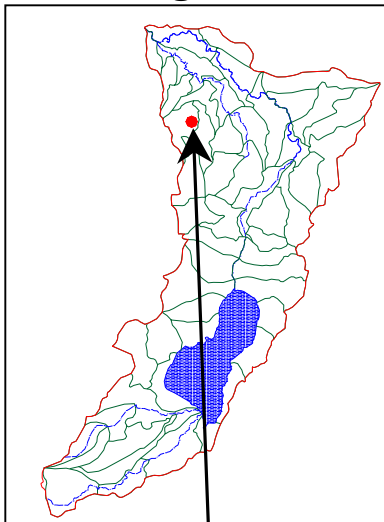


<Farming Practice Type 5>

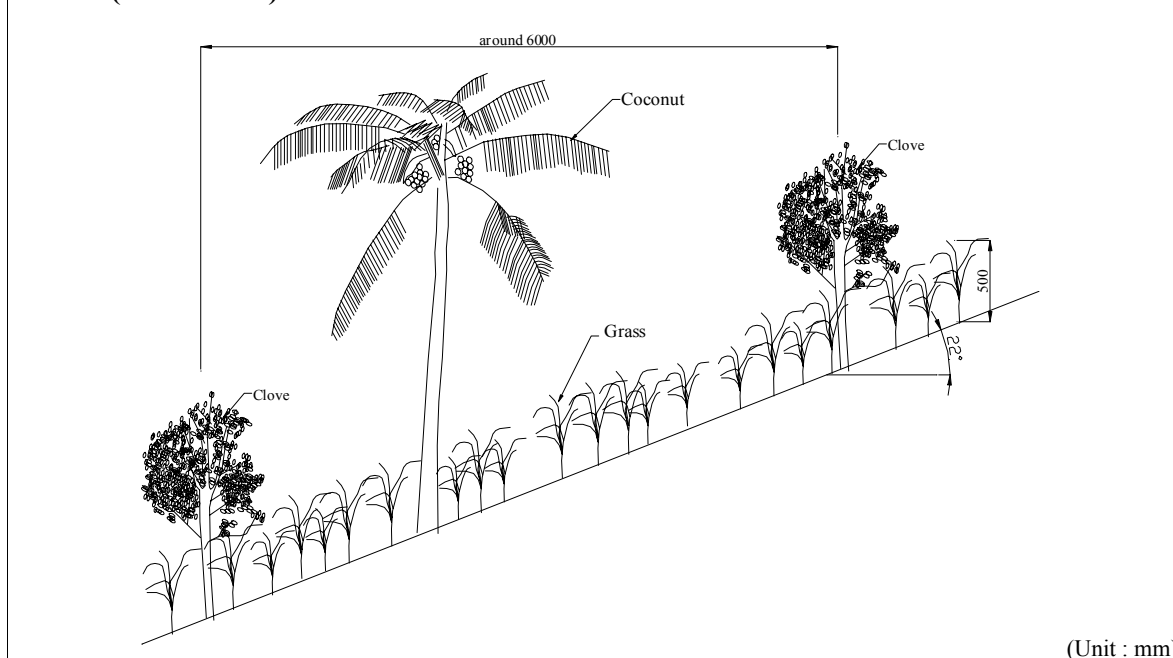
Estate Crop (Clove + Coconut) with Alang-alang



Survey Data

Date	: 25 Apr 2000	Planted Crop	: Clove (main)
Location	: Tombuluan - Kamangta Kabupaten Pineleng (N01°25'20", E124°52'43")		: Coconut (sub)
Altitude	: 240m	Covering Plant	: Alang-alang
		Slope Angle	: 22°

Profile (not in scale)



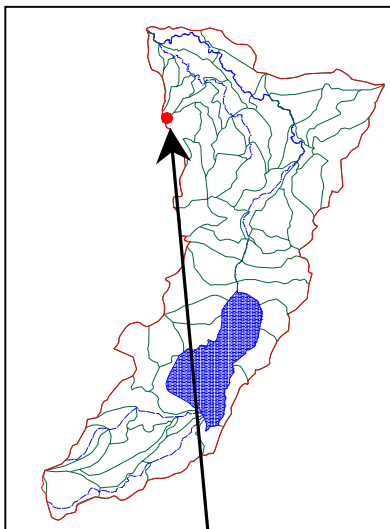
The Study on Critical Land and Protection Forest
Rehabilitation at Tondano Watershed
in the Republic of Indonesia

Japan International Cooperation Agency

Figure HAT1.5
Typical Farming Practice
- Estate Crop (Clove + Coconut)

<Farming Practice Type 6>

Estate Crop (Coconut) + Cereal (Maize) with Ridge Terrace



Survey Data

Date : 25 Apr 2000

Location : Manado-Koka
Kabupaten Pineleng
(N01°25'36", E124°51'26")

Altitude : 160m

Planted Crop : Coconut

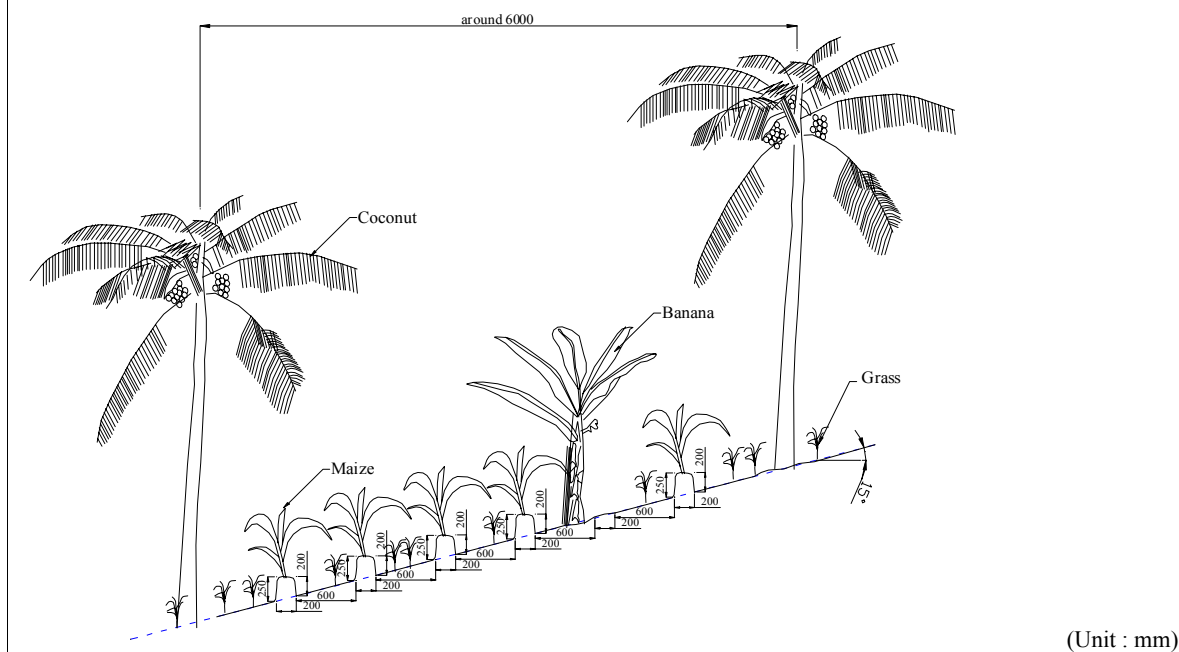
Maize

Support Practice : Ridge Terrace

Covering Plant : Alang-alang

Slope Angle : 15°

Profile (not in scale)



The Study on Critical Land and Protection Forest
Rehabilitation at Tondano Watershed
in the Republic of Indonesia

Japan International Cooperation Agency

Figure HAT1.6
Typical Farming Practice
- Estate Crop (Coconut) & Cereal (Maize)