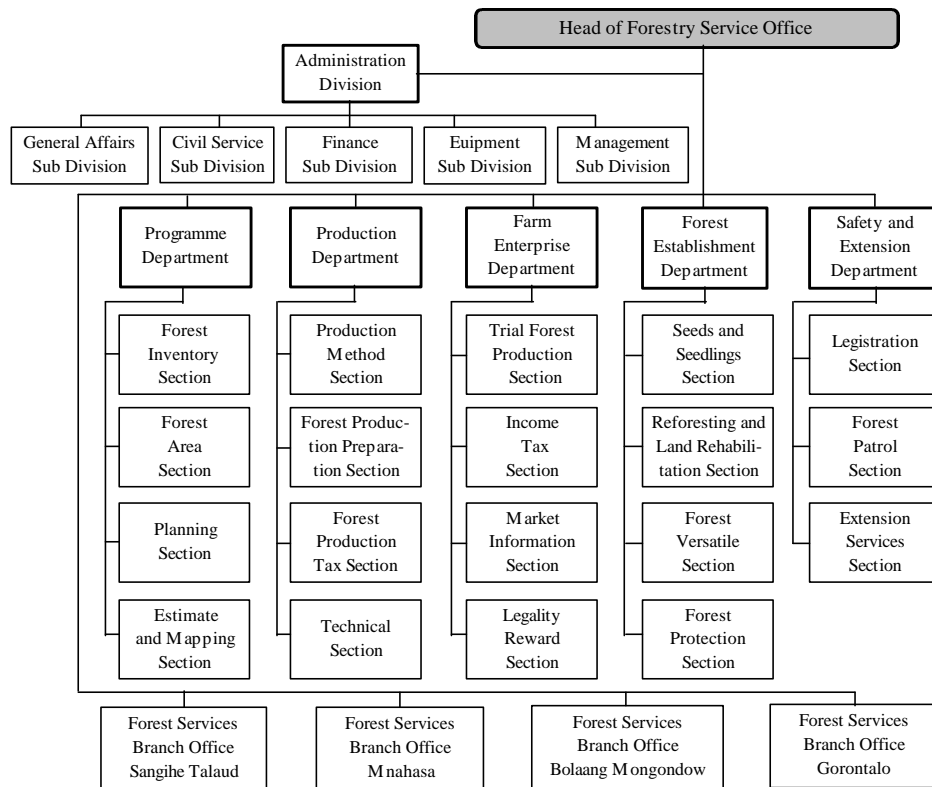
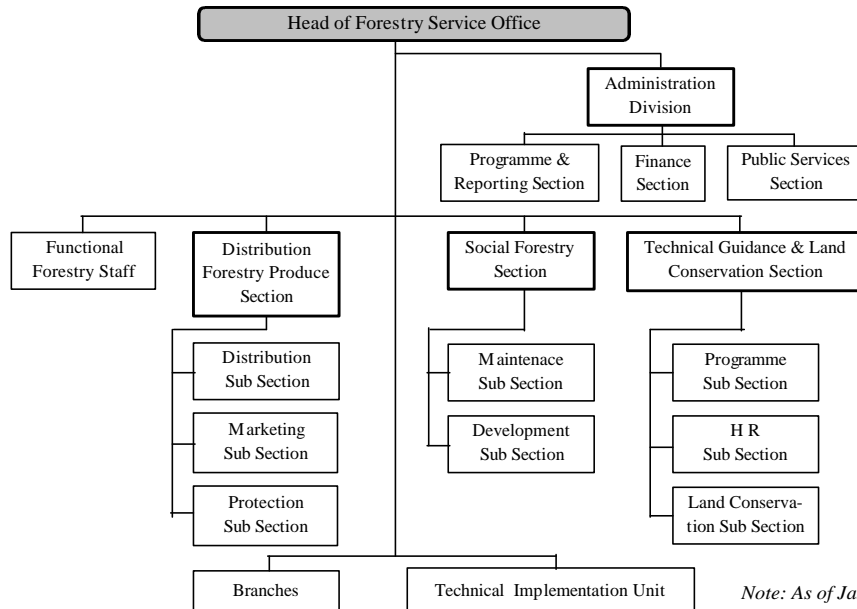


North Sulawesi Province Forestry Service Office



Note: As of January 2001

Minahasa District Forestry Service Office

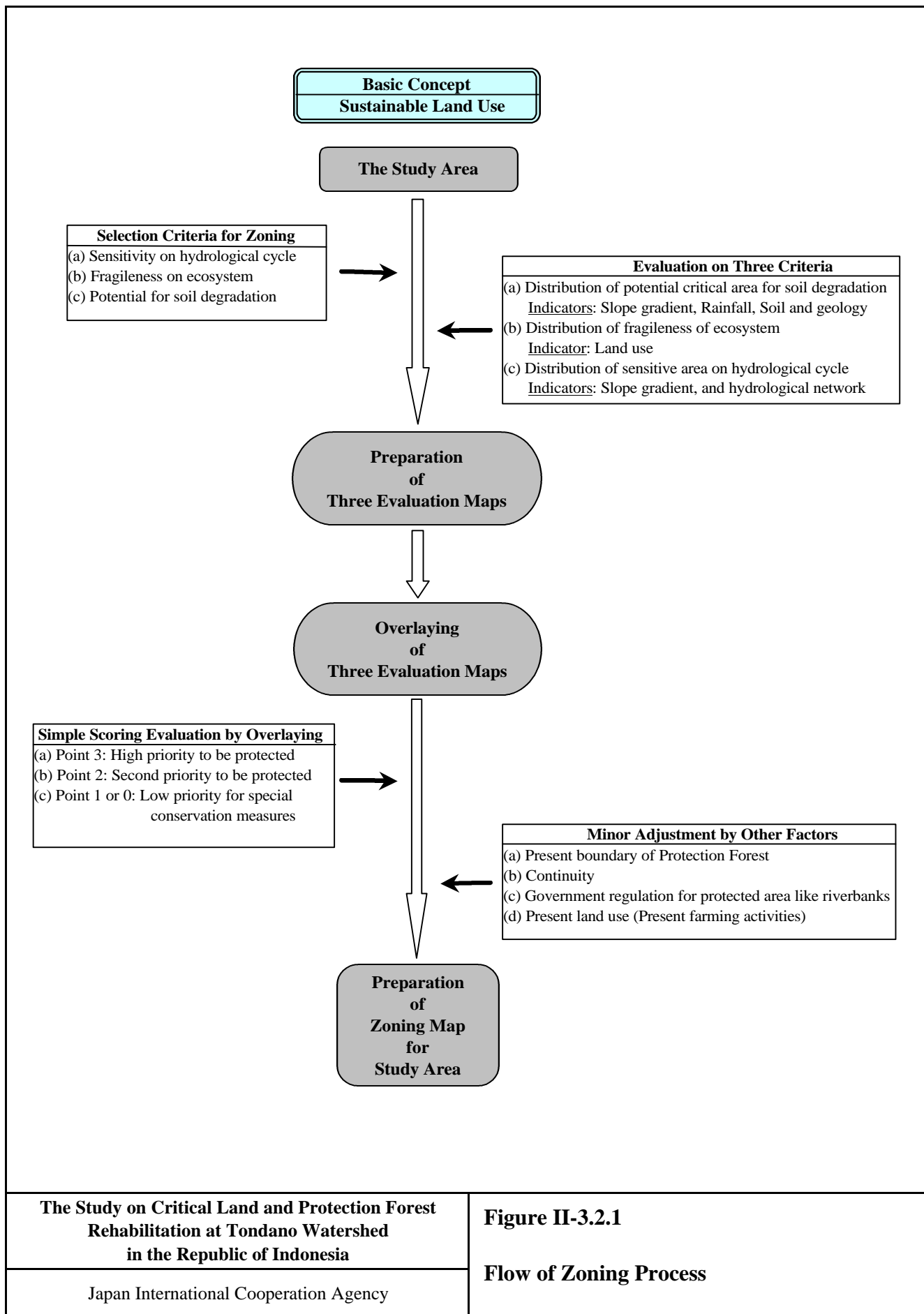


Note: As of January 2001

The Study on Critical Land and Protection Forest Rehabilitation at Tondano Watershed in the Republic of Indonesia

Japan International Cooperation Agency

**Figure II-1.11.3
Organization Chart for Forestry Service Offices in North Sulawesi Province and Minahasa District**

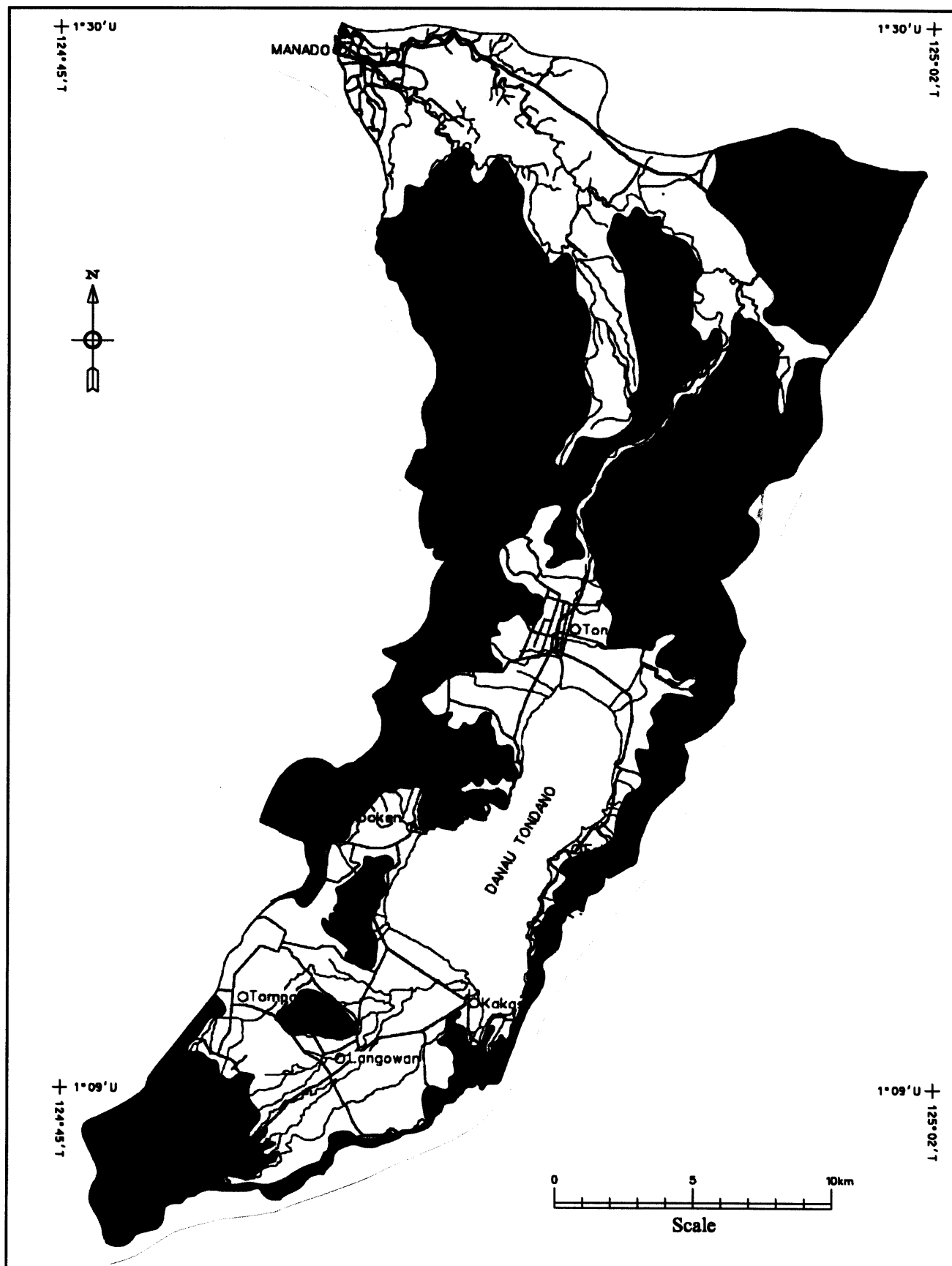


The Study on Critical Land and Protection Forest Rehabilitation at Tondano Watershed in the Republic of Indonesia

Japan International Cooperation Agency

Figure II-3.2.1

Flow of Zoning Process



**The Study on Critical Land and Protection Forest
Rehabilitation at Tondano Watershed
in the Republic of Indonesia**

Japan International Cooperation Agency

Figure II-3.2.2

**Sensitive Area on Hydrological Cycle
(Study Area)**