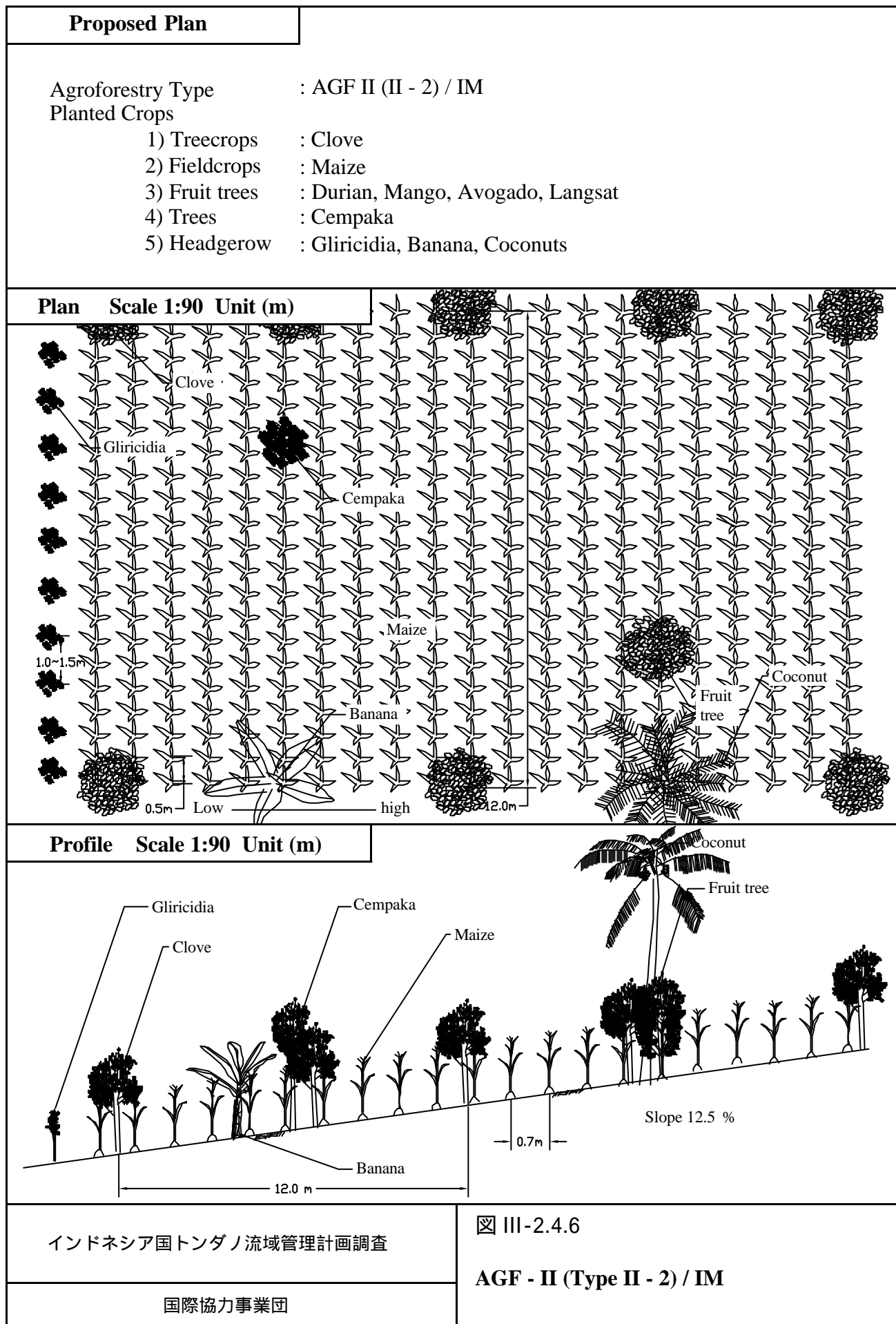


Proposed Plan	
Agroforestry Type : AGF I (Type I - 5) / IM Planted Crops <ul style="list-style-type: none"> 1) Treecrops : Clove, Coffee 2) Fieldcrops : None 3) Fruit trees : Durian, Mango, Langsat, Avogado 4) Trees : Cempaka 5) Headgerow : Gliricidia 	
Plan Scale 1:90 Unit (m) 	
Profile Scale 1:90 Unit (m) 	
インドネシア国トンダノ流域管理計画調査	☒ III-2.4.5 AGF-I (Type I - 5) / IM
国際協力事業団	

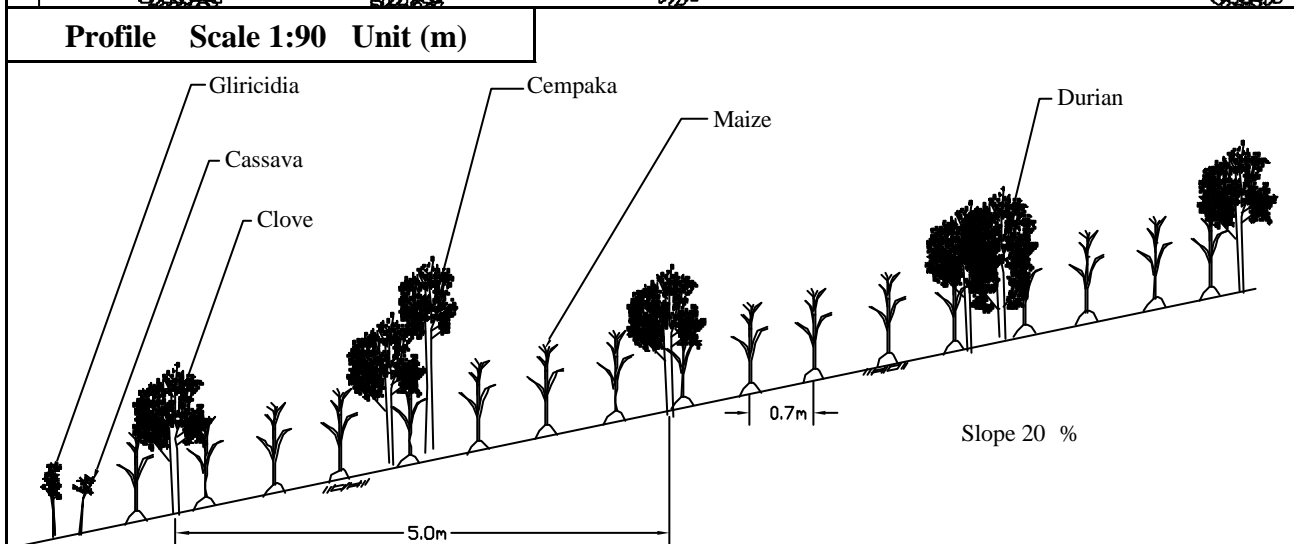
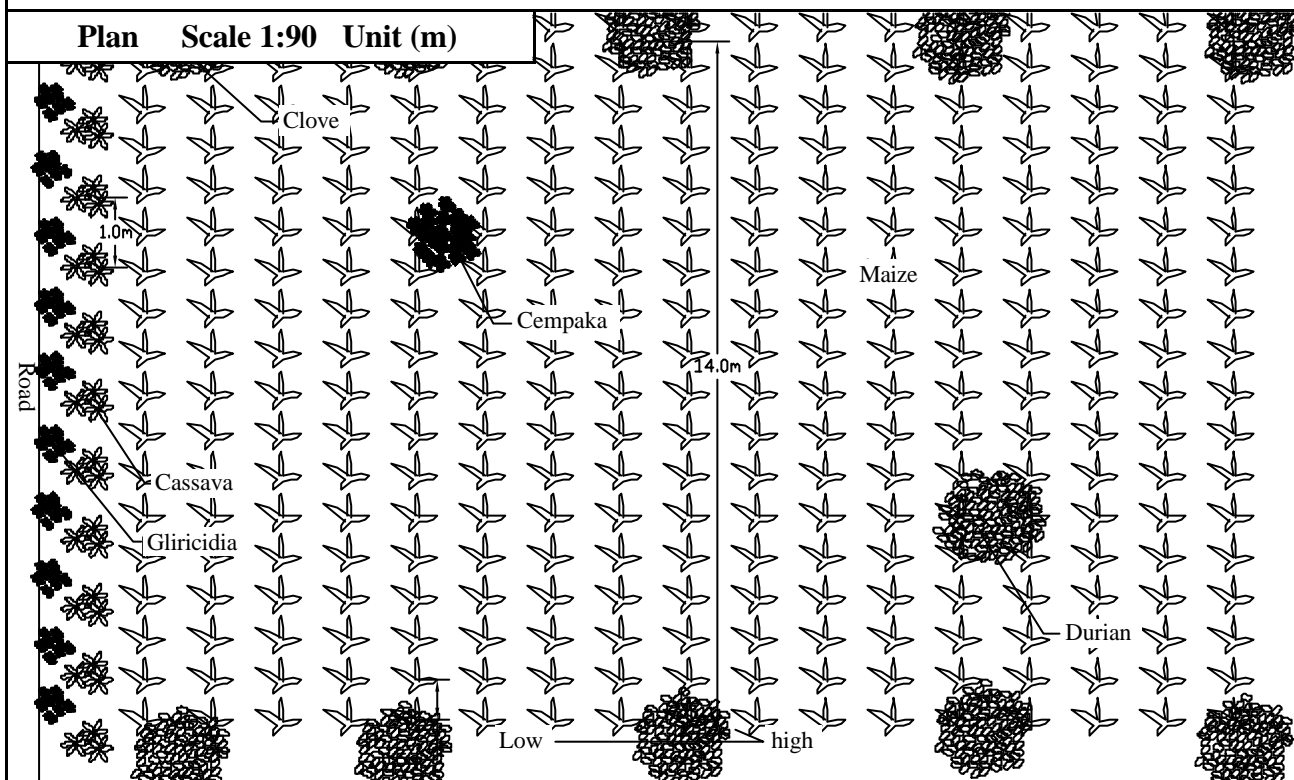


Proposed Plan

Agroforestry Type : AGF III (III - 2) / IM

Planted Crops

- 1) Treecrops : Clove, Durian
- 2) Fieldcrops : Maize
- 3) Fruit trees : Durian, Mango, Langsat
- 4) Trees : Cempaka
- 5) Headgerow : Gliricidia, Cassava, Banana, Coconuts,

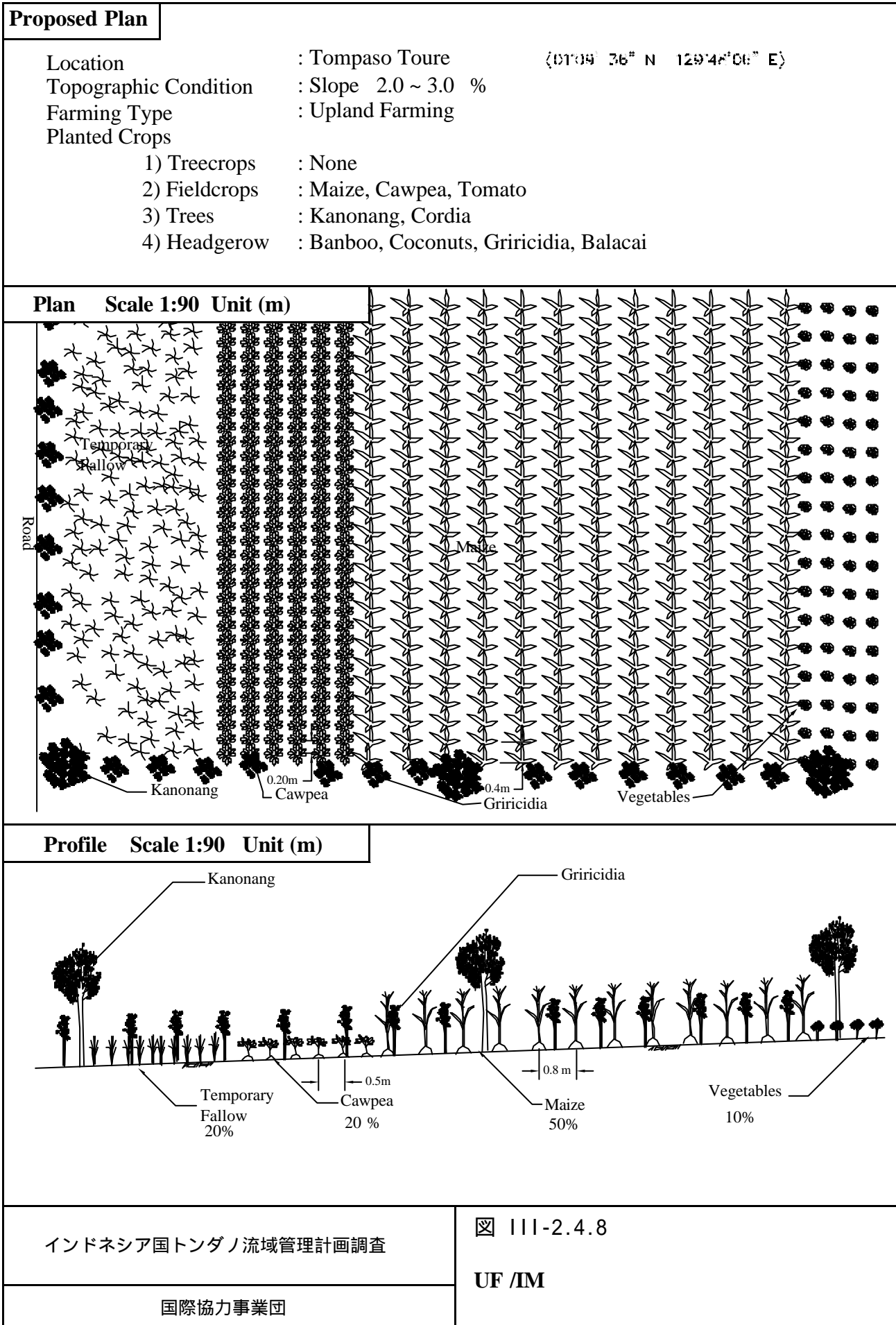


インドネシア国トンダノ流域管理計画調査

国際協力事業団

☒ III-2.4.7

AGF-III (Type III - 2) / IM

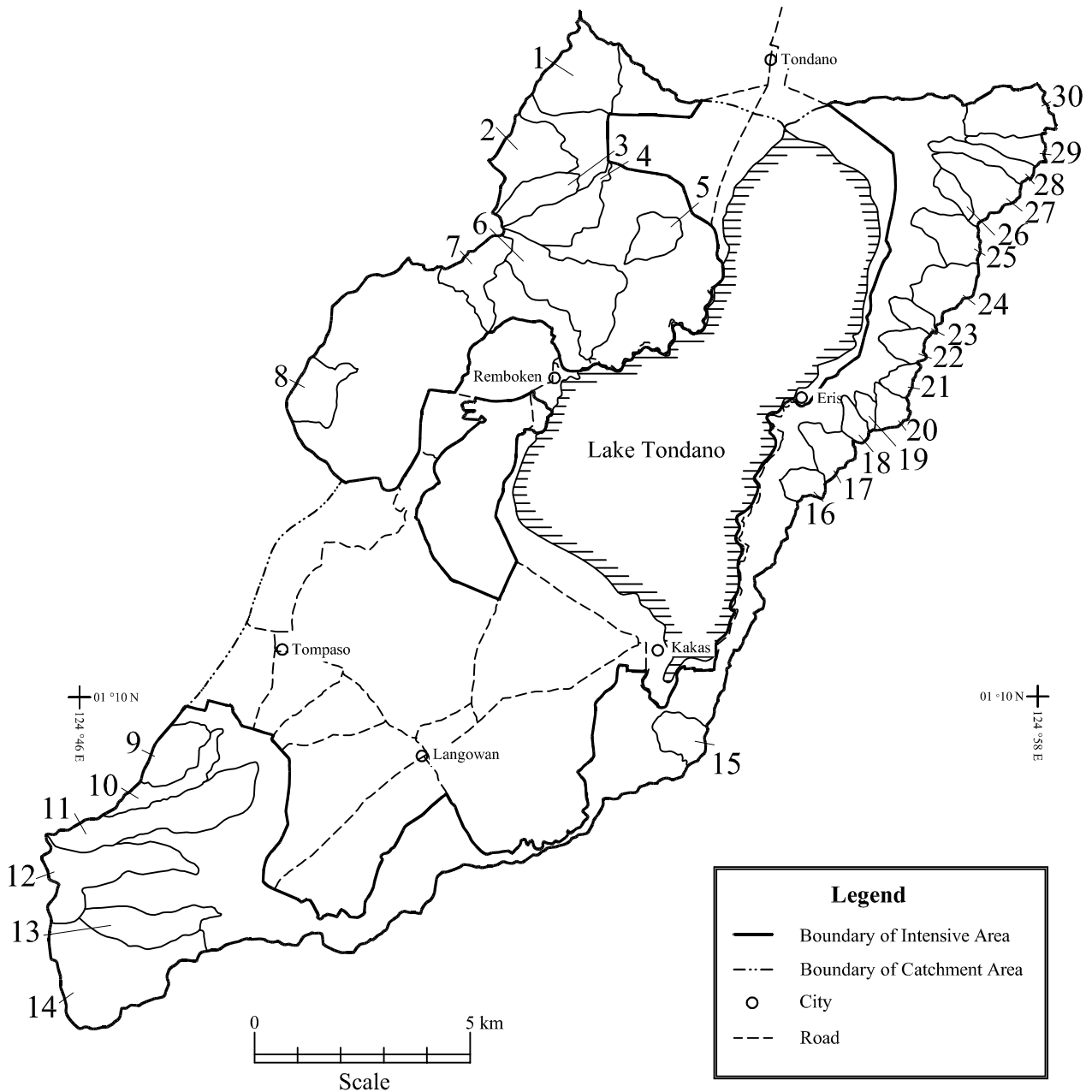


01°22'N
124°46'E

01°22'N
124°58'E



1 Sub-watershed No.

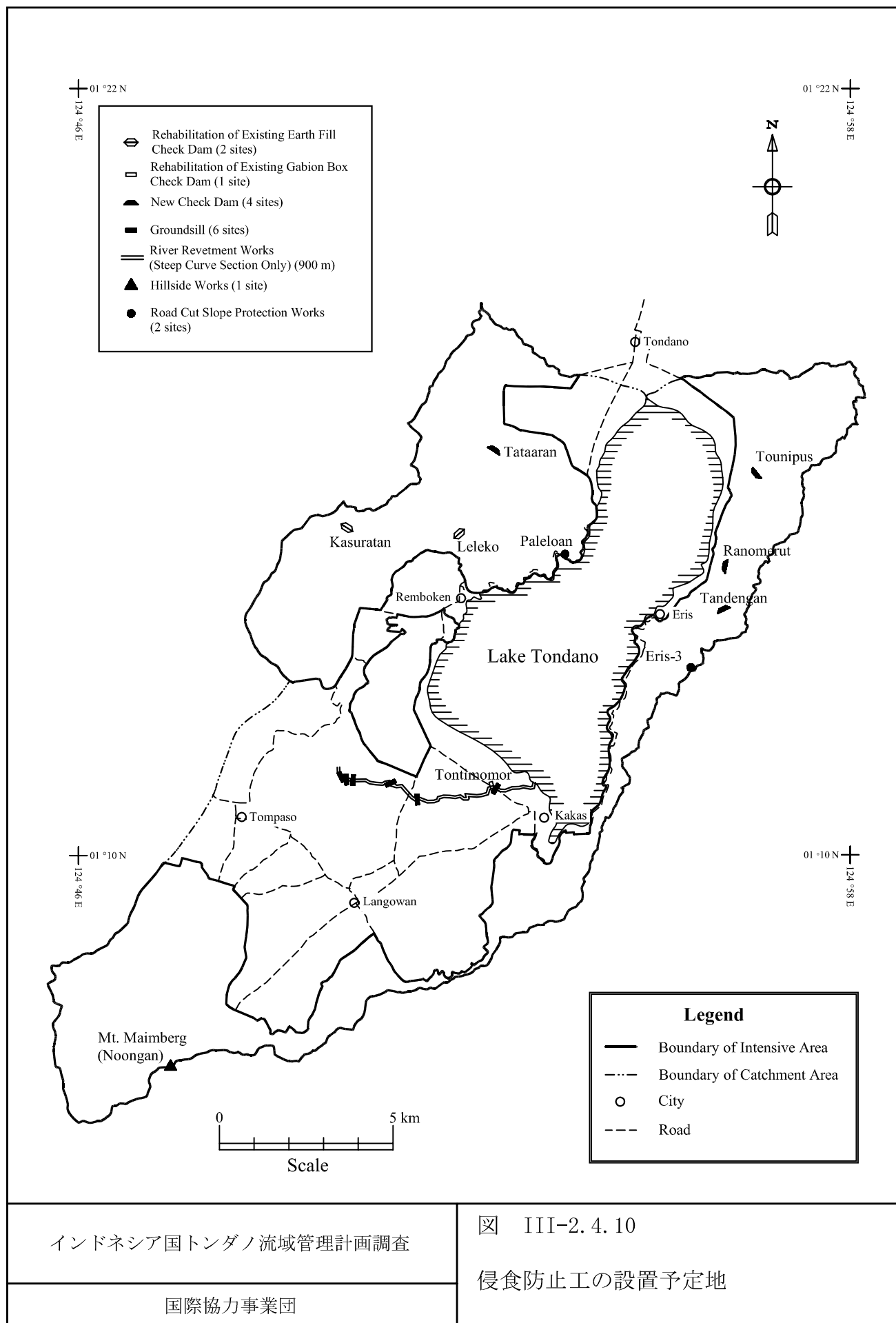


インドネシア国トンダノ流域管理計画調査

国際協力事業団

図 III-2.4.9

支流域の位置図
(インテンシブエリア)

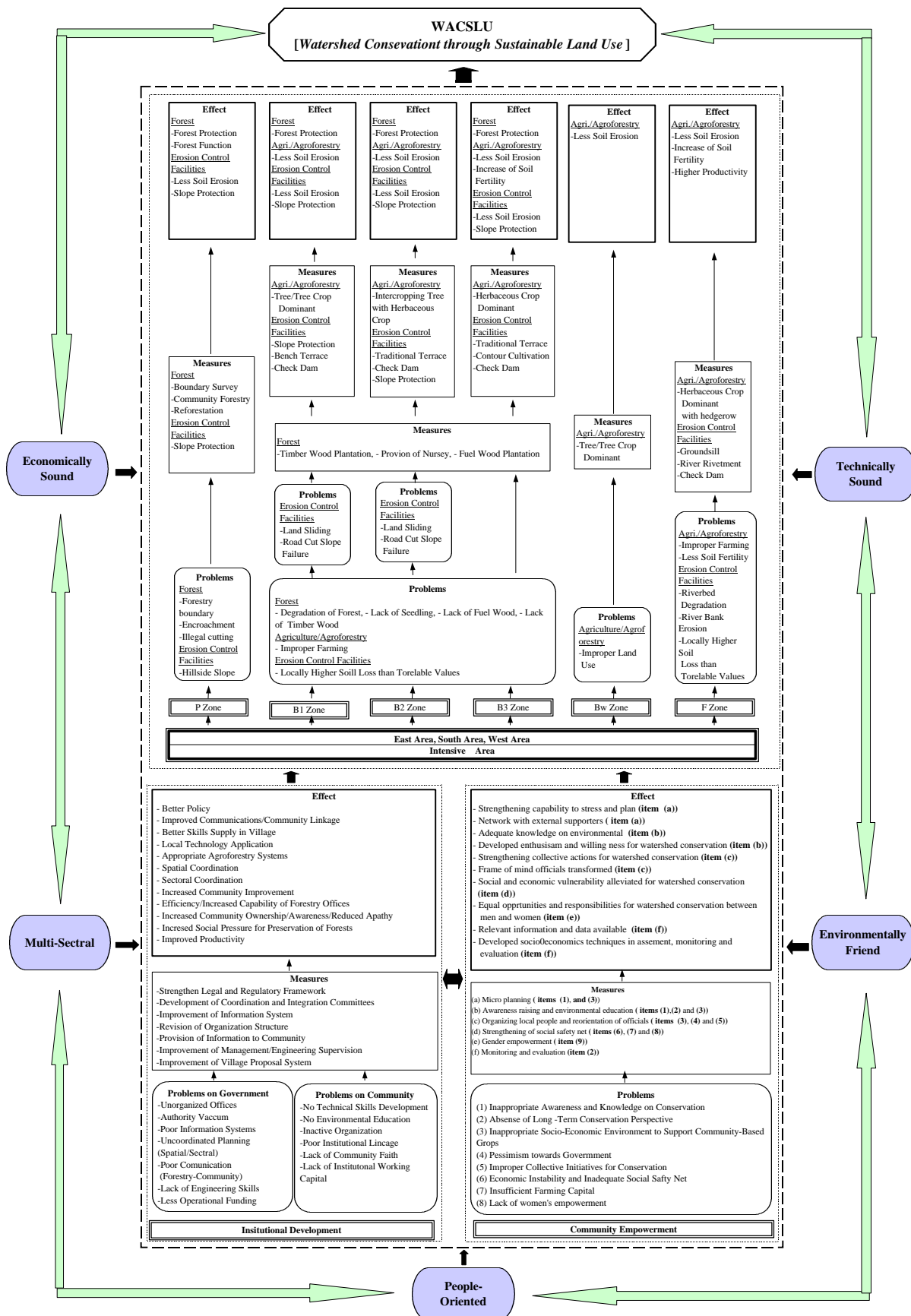


インドネシア国トンダノ流域管理計画調査

国際協力事業団

図 III-2.4.10

侵食防止工の設置予定地



インドネシア国トンダノ流域管理計画調査

国際協力事業団

図 III-2.4.11

流域保全計画の概念図

Components of Watershed Conservation Plan	1st Year	2nd Year	3rd Year	4th Year	5th Year	6th Year	7th Year	8th Year	9th Year	10th Year	11th Year	12th Year	13th Year	14th Year
1 Physical Watershed Conservation Measures Plan														
1.1 Forestry Management and Rehabilitation														
(1) Boundary Survey for Protection Forests														
(a) Field Survey and Mapping														
(b) Boundary Setting														
(2) Community Forestry Plan														
(a) Boundary Survey and Land Arrangement														
(b) Establishment of Community														
(c) Construction and Maintenance of Nurseries														
(d) Planting Activities														
(e) Treating Activities														
(3) Reforestation Plan														
(a) Field Survey														
(b) Construction and Maintenance of 5 Nurseries														
(c) Planting Activities														
(d) Tending of Planted Trees														
(e) Monitoring of Planting														
(4) Strengthening Plan of Forest Patrol														
(a) Construction of 6 Small Stations														
(b) Forest Patrol by 12 Forest Guards														
(5) Research Plan for Non-wood Forest Products														
(6) Fuel Wood Planting Plan														
(a) Construction of 7 Delivery Stations														
(b) Firewood Plantation for 150ha														
(7) Timber Tree Planting Plan														
(a) Construction of 9 Nurseries														
(b) Maintenance of 9 Nurseries by Extension Workers														
(8) Strengthening Plan of Extension Services														
1.2 Agriculture and Agroforestry Improvement Plan														
(1) Agriculture														
(a) Extension Services														
Plan and Procurement of Motorcycles and bicycles														
(b) Improvement Plan														
Crop Rotation														
Soil Fertility														
Cultural Practices														
Crop Protection against Deceases														
(2) Agroforestry														
(a) Extension Services														
Plan of Staff Employment														
Vehicles Arrangement														
Execution of Plan														
Training														
- Specialists														
- Extension Workers														
- Farmers														
(b) Improvement Plan														
Crop Rotation														
Replanting of Trees														
Cutting of Old Trees														
Cultural Practice														
Soil Conservation														
Crop Protection against Deceases														
1.3 Erosion Control Facilities Development Plan														
(1) Field Survey and Detailed Design														
(2) Construction of Erosion Control Facilities														
(a) At Critical Land														
(b) At Potential Critical Land														
2 Institutional Development														
(1) Pilot Community Institutional Development for 6 Villages														
(2) Community Institutional Development														
(3) Technical Institutional Development														
(4) Institutional Development for Forestry Services														
(5) Accurate Village Boundary Mapping														
(6) Institutional Integration and Strengthening of Legal and Regulatory Framework														
(7) Strengthening of Watershed Conservation Capacity at University Manado														
(8) Strengthening of Local NGOs														
3 Community Empowerment														
(1) Micro Planning for Sustainable Land Use														
(2) Awareness Raising and Environmental Education														
(3) Organizaing of Local People and Reorienting of Officials														
(4) Strengthening of Social Safety Network														
(5) Gender and Conservation														
4 Monitoring and Evaluation System Development Plan														
(1) Engineering Items														
(2) Socio-Economic Items														
5 Operation and Maintenance														

Bv 60th Year

インドネシア国トンダノ流域管理計画調査

国際協力事業団

図 III-4.1.1

事業実施計画