

B1 FLOOR PLAN

MOTOR LIST

MOTOR No.	NAME OF EQUIPMENT	MOTOR No.	NAME OF EQUIPMENT	MOTOR No.	NAME OF EQUIPMENT	ITEM No.	INSTRUMENTATION EQUIPMENT
414-1	SODIUM HYPOCHLORITE PUMP	514-7	FLOOR DRAINAGE PUMP	524-2	FILTERED WATER SUPPLY PUMP	LIA-501	SAND FILTRATION EFFLUENT TANK WATER LEVEL
414-2	SODIUM HYPOCHLORITE PUMP	514-8	FLOOR DRAINAGE PUMP	525-1	BACKWASH PUMP	FIQ-501	TREATED WATER EFFLUENT FLOW METER
414-3	SODIUM HYPOCHLORITE PUMP	516-1	TREATED WATER SUPPLY PUMP (2)	525-2	BACKWASH PUMP	LC-501	SECONDARY EFFLUENT TANK LEVEL SWITCH
512-1	TREATED WATER SUPPLY PUMP (1)	516-2	TREATED WATER SUPPLY PUMP (2)	526-1	AIR WASH BLOWER	LC-502	BACKWASH WASTEWATER TANK LEVEL SWITCH
512-2	TREATED WATER SUPPLY PUMP (1)	517-1	TREATED WATER STRAINER (2)	526-2	AIR WASH BLOWER	LC-503-506	FLOOR DRAINAGE PIT LEVEL SWITCH
513-1	TREATED WATER STRAINER (1)	521-1	FILTRATION SUPPLY PUMP	527-1	BACKWASH WASTEWATER PUMP		
514-1	FLOOR DRAINAGE PUMP	521-2	FILTRATION SUPPLY PUMP	527-2	BACKWASH WASTEWATER PUMP		
514-2	FLOOR DRAINAGE PUMP	522-1	FILTRATION SUPPLY STRAINER	528-1	AIR COMPRESSOR		
514-3	FLOOR DRAINAGE PUMP	522-2	FILTRATION SUPPLY STRAINER	528-2	AIR COMPRESSOR		
514-4	FLOOR DRAINAGE PUMP	523-1	SAND FILTER	529-1	DEHUMIDIFIER		
514-5	FLOOR DRAINAGE PUMP	523-2	SAND FILTER	530-1	SOLENOID VALVE BOX		
514-6	FLOOR DRAINAGE PUMP	524-1	FILTERED WATER SUPPLY PUMP	530-2	SOLENOID VALVE BOX		

NO.	DATE	DESCRIPTIONS	BY	APRO.

REVISIONS

PROJECT MANAGEMENT UNIT FOR  
HO CHI MINH CITY  
WATER ENVIRONMENT IMPROVEMENT

THE DETAILED DESIGN ON HO CHI MINH CITY  
WATER ENVIRONMENT IMPROVEMENT PROJECT  
IN THE SOCIALIST REPUBLIC OF VIET NAM

PACKAGE E  
WASTEWATER TREATMENT PLANT

WIRING & PIPING PLAN  
FOR  
CHLORINE STORAGE BUILDING  
(1/4)

SCALE : 1/150

JICA JAPAN INTERNATIONAL COOPERATION AGENCY ( JICA )

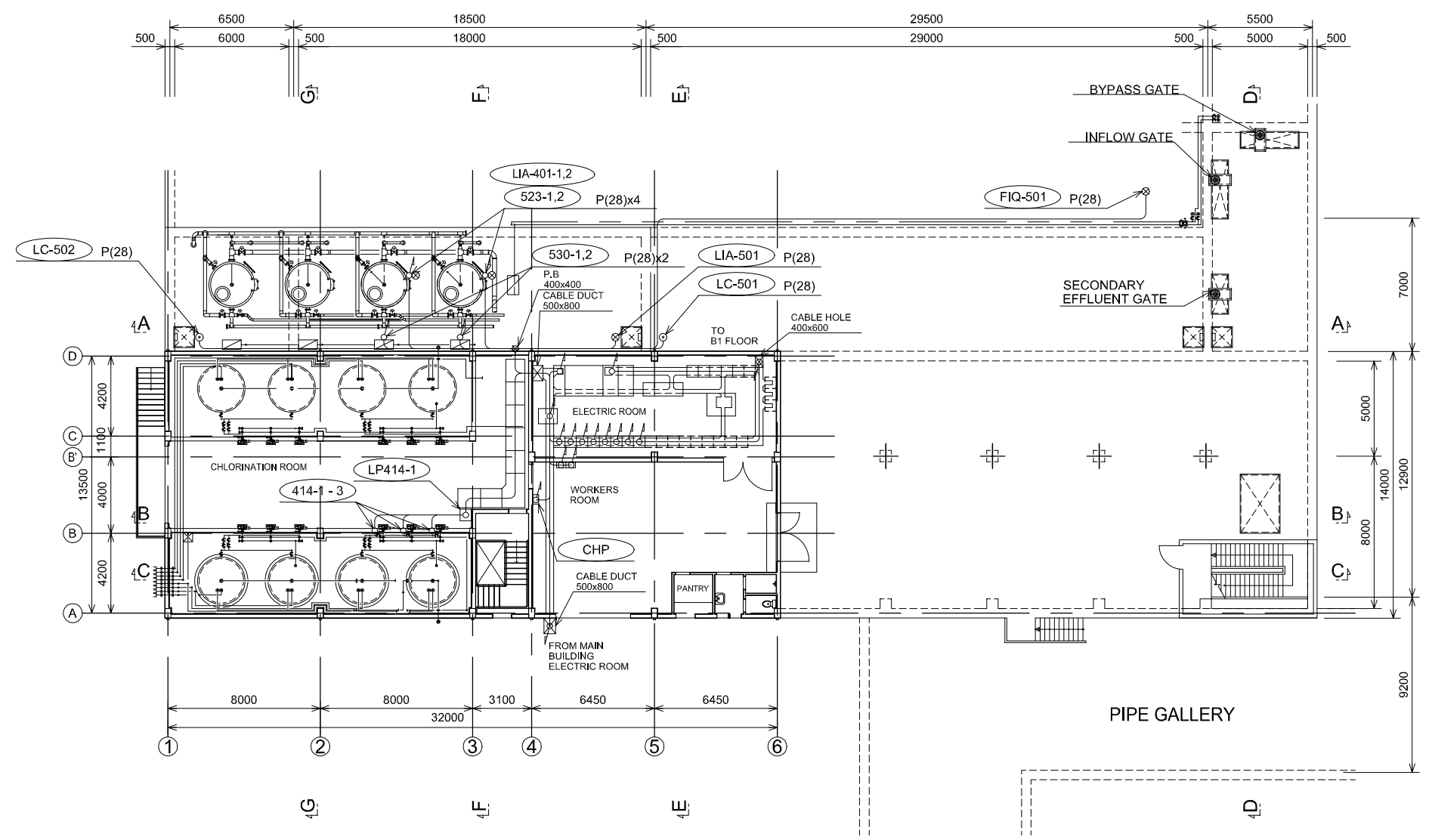
PACIFIC CONSULTANTS INTERNATIONAL

DESIGNED  
KOMIYA NOBUO

CHECKED  
KONDO MASAMI

DATE : JUNE 2001

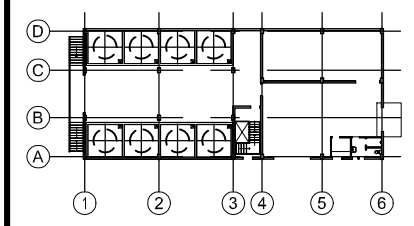
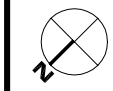
DWG. No. PE - WWTP - 535-01



1ST FLOOR PLAN

MOTOR LIST

MOTOR No.	NAME OF EQUIPMENT	MOTOR No.	NAME OF EQUIPMENT	MOTOR No.	NAME OF EQUIPMENT	ITEM No.	INSTRUMENTATION EQUIPMENT
414-1	SODIUM HYPOCHLORITE PUMP	514-7	FLOOR DRAINAGE PUMP	524-2	FILTERED WATER SUPPLY PUMP	LIA-501	SAND FILTRATION EFFLUENT TANK WATER LEVEL
414-2	SODIUM HYPOCHLORITE PUMP	514-8	FLOOR DRAINAGE PUMP	525-1	BACKWASH PUMP	FIQ-501	TREATED WATER EFFLUENT FLOW METER
414-3	SODIUM HYPOCHLORITE PUMP	516-1	TREATED WATER SUPPLY PUMP (2)	525-2	BACKWASH PUMP	LC-501	SECONDARY EFFLUENT TANK LEVEL SWITCH
512-1	TREATED WATER SUPPLY PUMP (1)	516-2	TREATED WATER SUPPLY PUMP (2)	526-1	AIR WASH BLOWER	LC-502	BACKWASH WASTEWATER TANK LEVEL SWITCH
512-2	TREATED WATER SUPPLY PUMP (1)	517-1	TREATED WATER STRAINER (2)	526-2	AIR WASH BLOWER	LC-503-506	FLOOR DRAINAGE PIT LEVEL SWITCH
513-1	TREATED WATER STRAINER (1)	521-1	FILTRATION SUPPLY PUMP	527-1	BACKWASH WASTEWATER PUMP	CHP	CHLORINATION BUILDING LIGHTING BOARD (ARCHITECTURE WORK)
514-1	FLOOR DRAINAGE PUMP	521-2	FILTRATION SUPPLY PUMP	527-2	BACKWASH WASTEWATER PUMP		
514-2	FLOOR DRAINAGE PUMP	522-1	FILTRATION SUPPLY STRAINER	528-1	AIR COMPRESSOR		
514-3	FLOOR DRAINAGE PUMP	522-2	FILTRATION SUPPLY STRAINER	528-2	AIR COMPRESSOR		
514-4	FLOOR DRAINAGE PUMP	523-1	SAND FILTER	529-1	DEHUMIDIFIER		
514-5	FLOOR DRAINAGE PUMP	523-2	SAND FILTER	530-1	SOLENOID VALVE BOX		
514-6	FLOOR DRAINAGE PUMP	524-1	FILTERED WATER SUPPLY PUMP	530-2	SOLENOID VALVE BOX		



KEY PLAN


NO.	DATE	DESCRIPTIONS	BY	APRO.
-----	------	--------------	----	-------

REVISIONS

PROJECT MANAGEMENT UNIT FOR  
HO CHI MINH CITY  
WATER ENVIRONMENT IMPROVEMENT

THE DETAILED DESIGN ON HO CHI MINH CITY  
WATER ENVIRONMENT IMPROVEMENT PROJECT  
IN THE SOCIALIST REPUBLIC OF VIET NAM

PACKAGE E  
WASTEWATER TREATMENT PLANT

WIRING & PIPING PLAN  
FOR  
CHLORINE STORAGE BUILDING  
(2/4)

SCALE : 1/150

JICA JAPAN INTERNATIONAL COOPERATION AGENCY ( JICA )

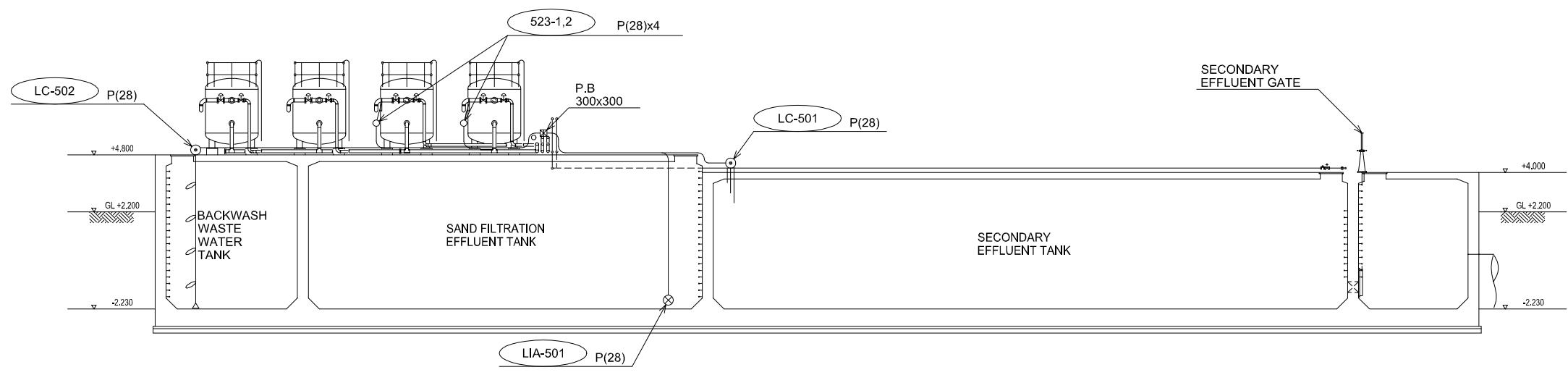
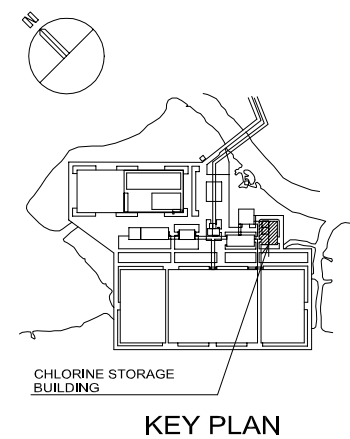
PACIFIC CONSULTANTS INTERNATIONAL

DESIGNED  
KOMIYA NOBUO

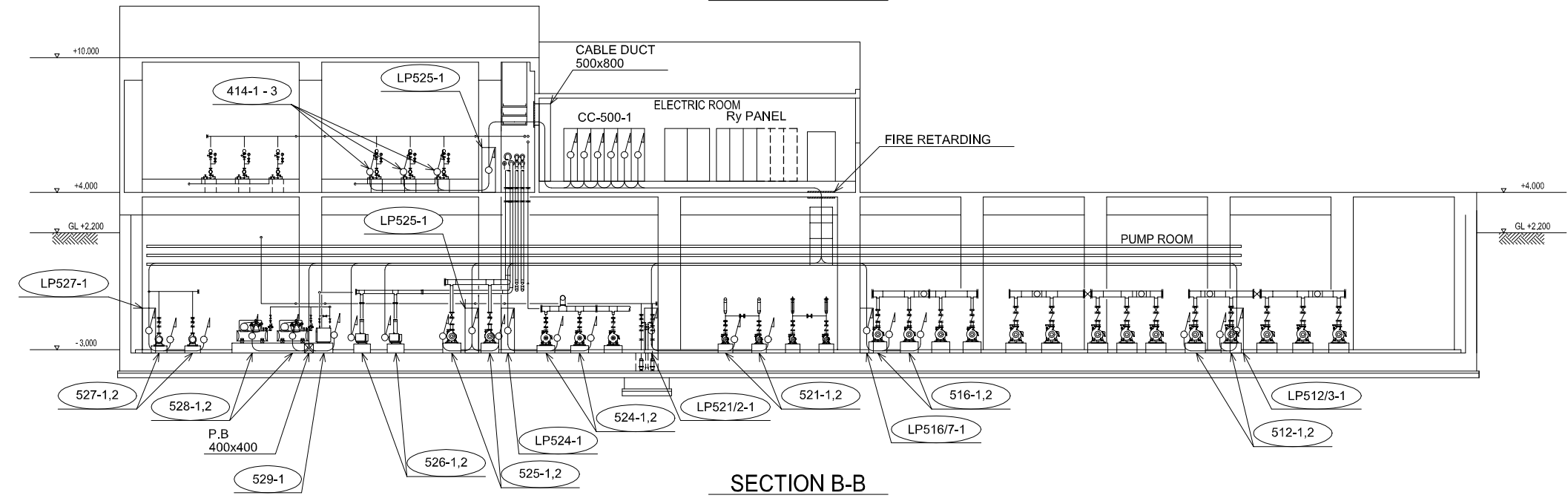
CHECKED  
KONDO MASAMI

DATE : JUNE 2001

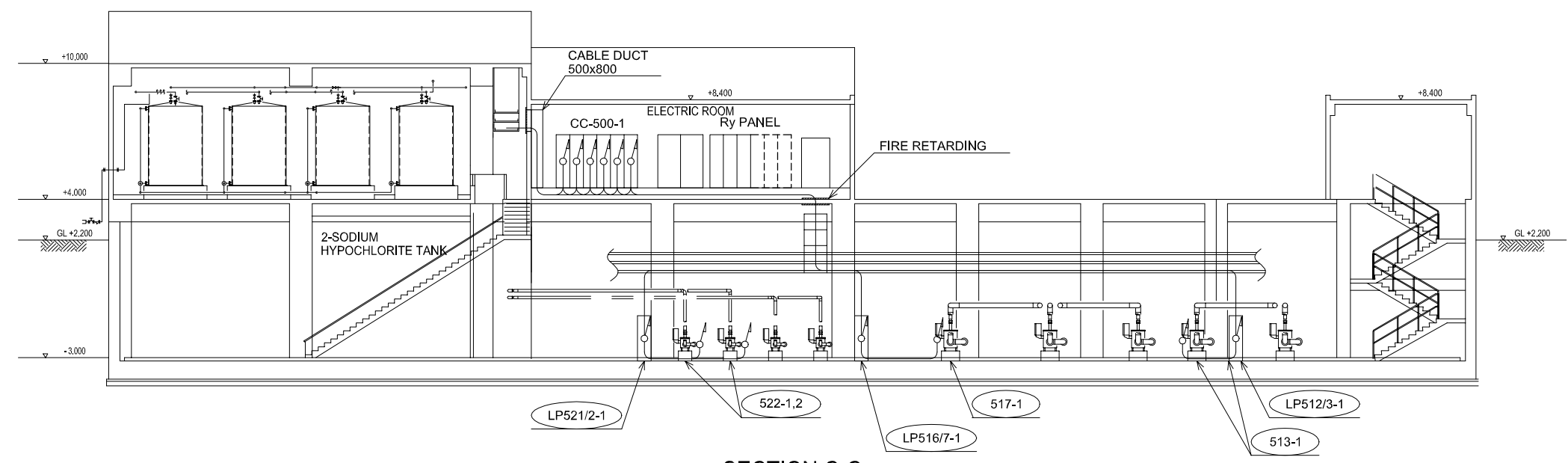
DWG. No. PE - WWTP - 535-02



SECTION A-A

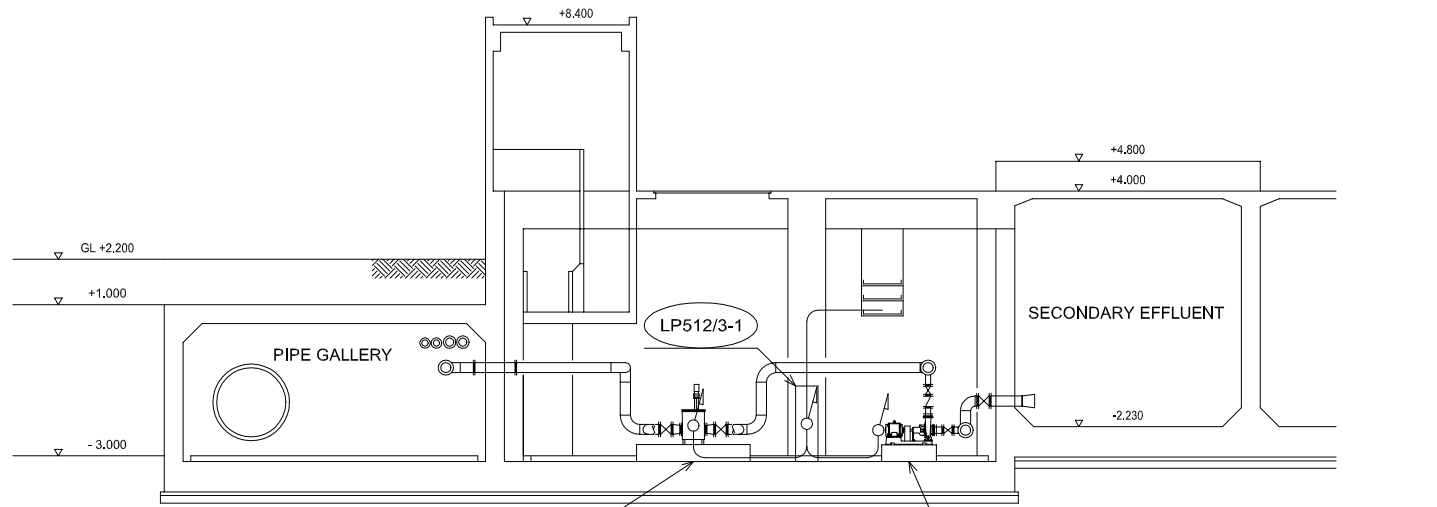


SECTION B-B

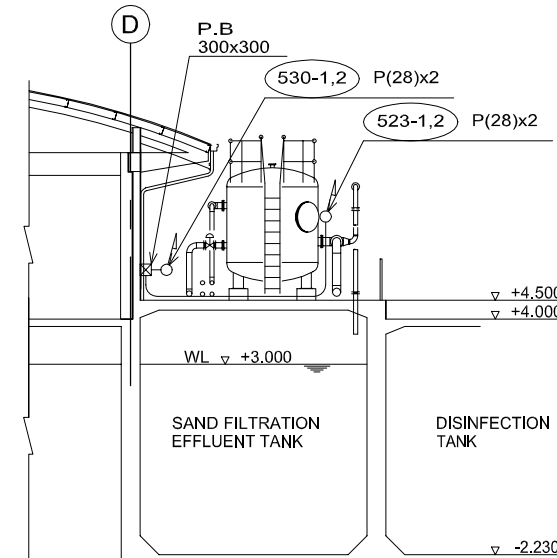


SECTION C-C

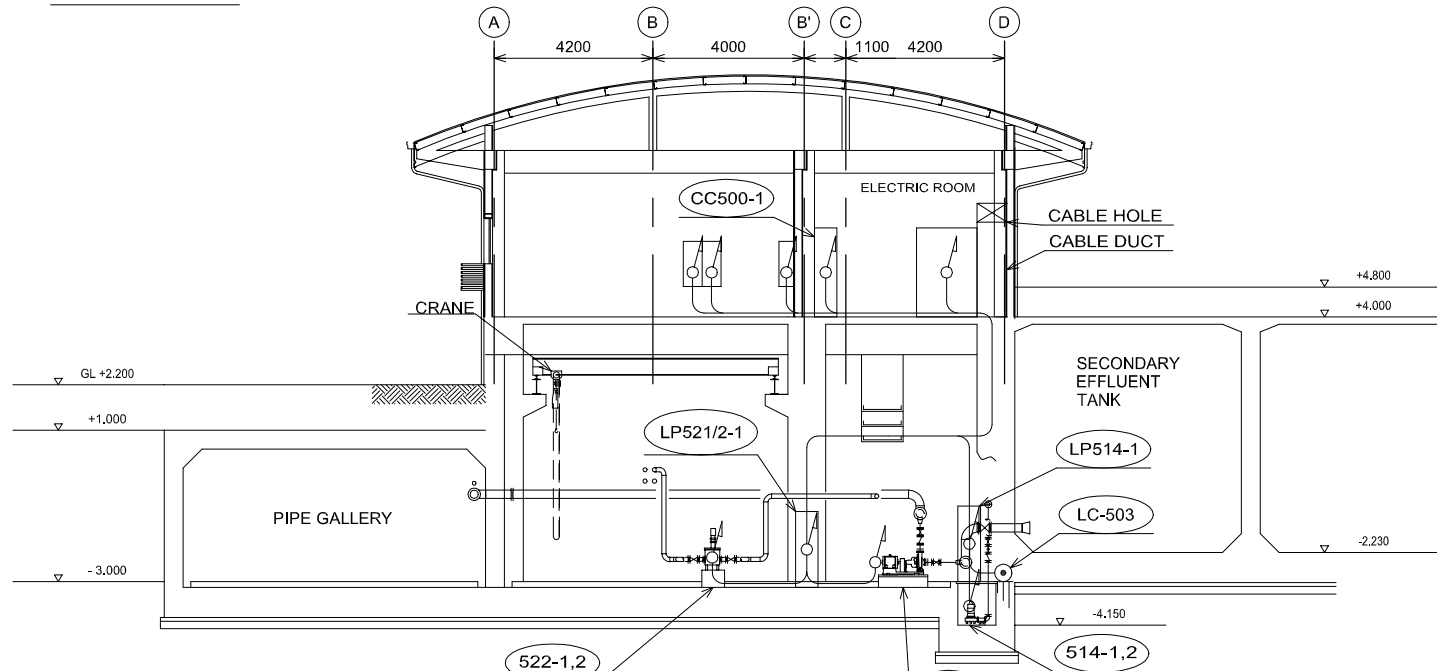
NO.	DATE	DESCRIPTIONS	BY	APRO.
REVISIONS				
PROJECT MANAGEMENT UNIT FOR HO CHI MINH CITY WATER ENVIRONMENT IMPROVEMENT				
THE DETAILED DESIGN ON HO CHI MINH CITY WATER ENVIRONMENT IMPROVEMENT PROJECT IN THE SOCIALIST REPUBLIC OF VIET NAM				
PACKAGE E WASTEWATER TREATMENT PLANT WIRING & PIPING PLAN FOR CHLORINE STORAGE BUILDING (3/4)				
SCALE : 1/125				
JAPAN INTERNATIONAL COOPERATION AGENCY ( JICA )				
PACIFIC CONSULTANTS INTERNATIONAL				
DESIGNED KOMIYA NOBUO		CHECKED KONDO MASAMI		
DATE : JUNE 2001		DWG. No. PE - WWTP - 535-03		



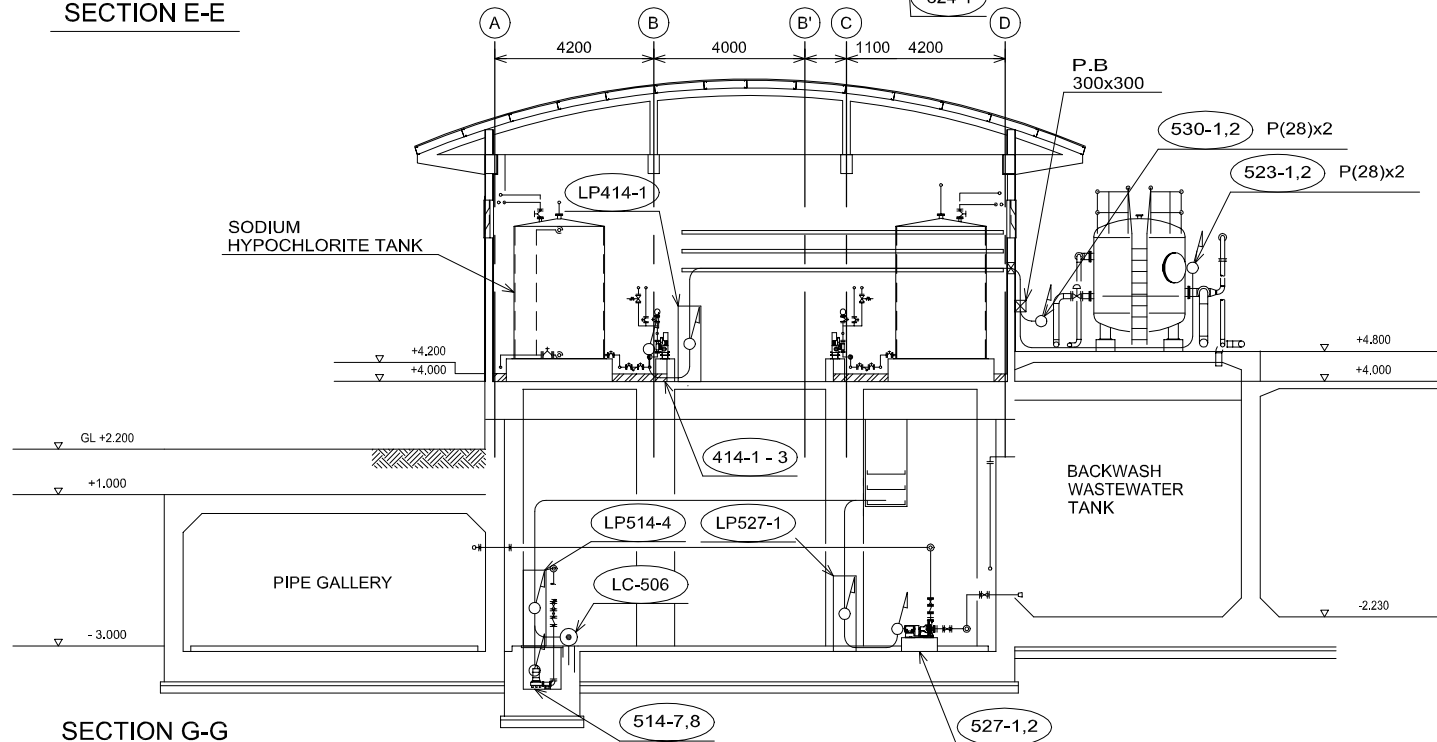
SECTION D-D



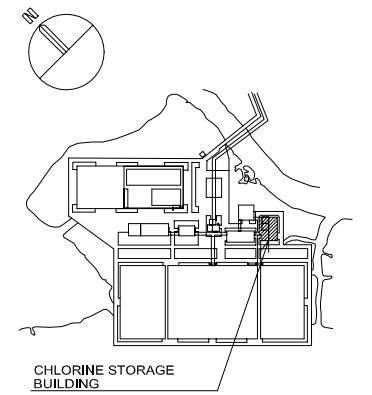
SECTION F-F



SECTION E-E



SECTION G-G



KEY PLAN

MOTOR LIST

MOTOR No.	NAME OF EQUIPMENT
414-1	SODIUM HYPOCHLORITE PUMP
414-2	SODIUM HYPOCHLORITE PUMP
414-3	SODIUM HYPOCHLORITE PUMP
512-1	TREATED WATER SUPPLY PUMP (1)
512-2	TREATED WATER SUPPLY PUMP (1)
513-1	TREATED WATER STRAINER (1)
514-1	FLOOR DRAINAGE PUMP
514-2	FLOOR DRAINAGE PUMP
514-3	FLOOR DRAINAGE PUMP
514-4	FLOOR DRAINAGE PUMP
514-5	FLOOR DRAINAGE PUMP
514-6	FLOOR DRAINAGE PUMP
514-7	FLOOR DRAINAGE PUMP
514-8	FLOOR DRAINAGE PUMP
516-1	TREATED WATER SUPPLY PUMP (2)
516-2	TREATED WATER SUPPLY PUMP (2)
517-1	TREATED WATER STRAINER (2)
521-1	FILTRATION SUPPLY PUMP
521-2	FILTRATION SUPPLY PUMP
522-1	FILTRATION SUPPLY STRAINER
522-2	FILTRATION SUPPLY STRAINER
523-1	SAND FILTER
523-2	SAND FILTER
524-1	FILTERED WATER SUPPLY PUMP
524-2	FILTERED WATER SUPPLY PUMP
525-1	BACKWASH PUMP
525-2	BACKWASH PUMP
526-1	AIR WASH BLOWER
526-2	AIR WASH BLOWER
527-1	BACKWASH WASTEWATER PUMP
527-2	BACKWASH WASTEWATER PUMP
528-1	AIR COMPRESSOR
528-2	AIR COMPRESSOR
529-1	DEHUMIDIFIER
530-1	SOLENOID VALVE BOX
530-2	SOLENOID VALVE BOX
ITEM No.	INSTRUMENTATION EQUIPMENT
LIA-501	SAND FILTRATION EFFLUENT TANK WATER LEVEL
FIQ-501	TREATED WATER EFFLUENT FLOW METER
LC-501	SECONDARY EFFLUENT TANK LEVEL SWITCH
LC-502	BACKWASH WASTEWATER TANK LEVEL SWITCH
LC-503-506	FLOOR DRAINAGE PIT LEVEL SWITCH

NO.	DATE	DESCRIPTIONS	BY	APRO.

REVISIONS

PROJECT MANAGEMENT UNIT FOR  
HO CHI MINH CITY  
WATER ENVIRONMENT IMPROVEMENT

THE DETAILED DESIGN ON HO CHI MINH CITY  
WATER ENVIRONMENT IMPROVEMENT PROJECT  
IN THE SOCIALIST REPUBLIC OF VIET NAM

PACKAGE E  
WASTEWATER TREATMENT PLANT  
WIRING & PIPING PLAN  
FOR  
CHLORINE STORAGE BUILDING  
(4/4)

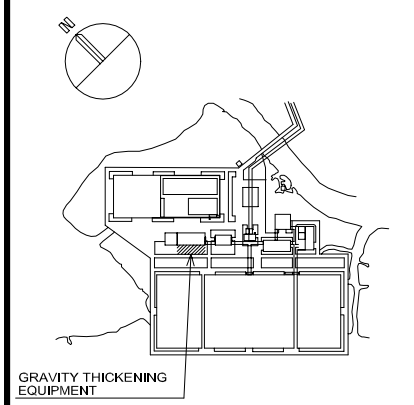
SCALE : 1/100

JICA JAPAN INTERNATIONAL COOPERATION AGENCY ( JICA )

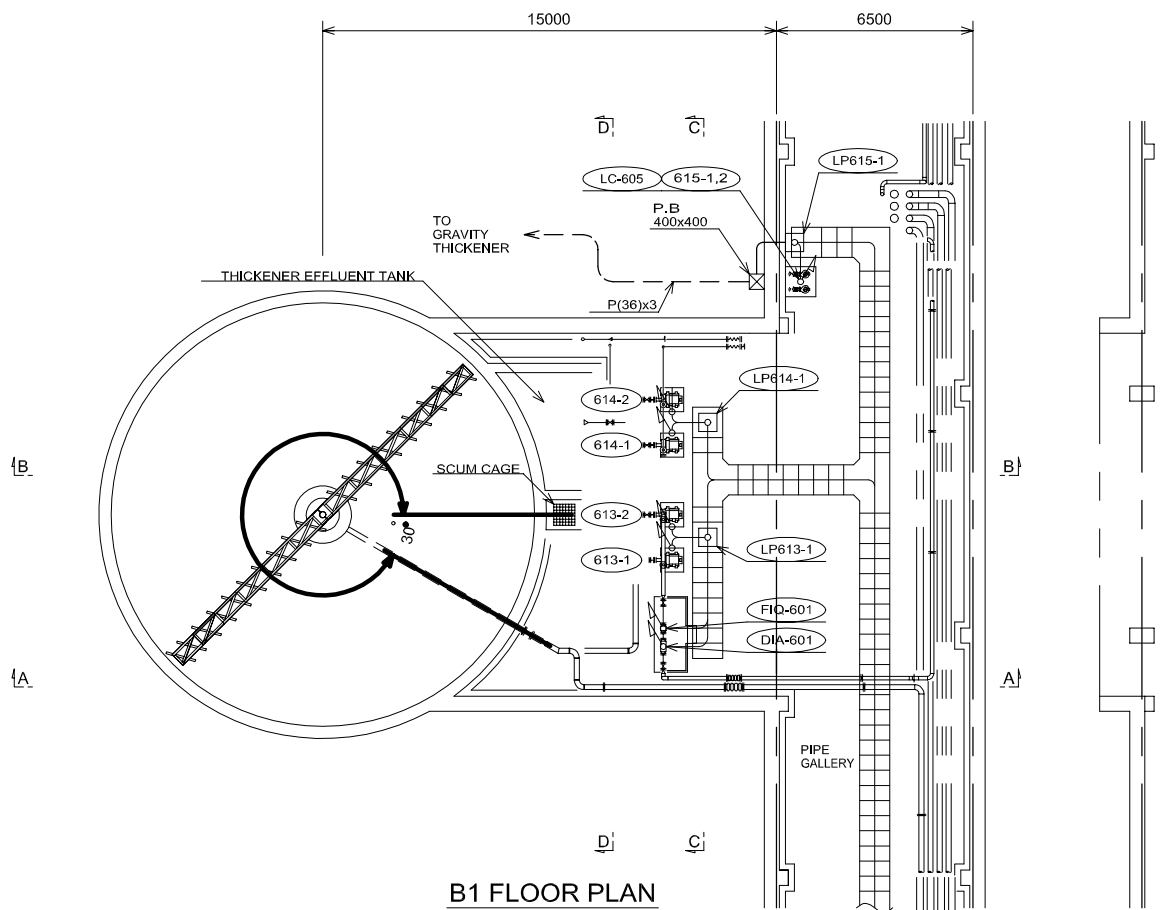
PACIFIC CONSULTANTS INTERNATIONAL

DESIGNED KOMIYA NOBUO CHECKED KONDO MASAMI

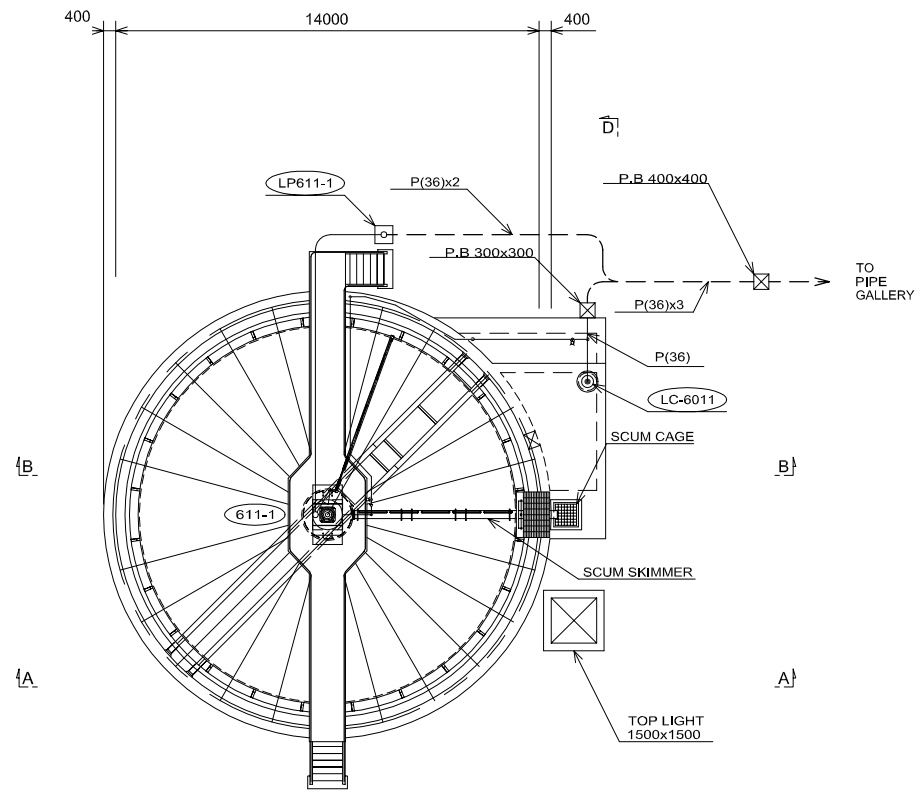
DATE : JUNE 2001 DWG. No. PE - WWTP - 535-04



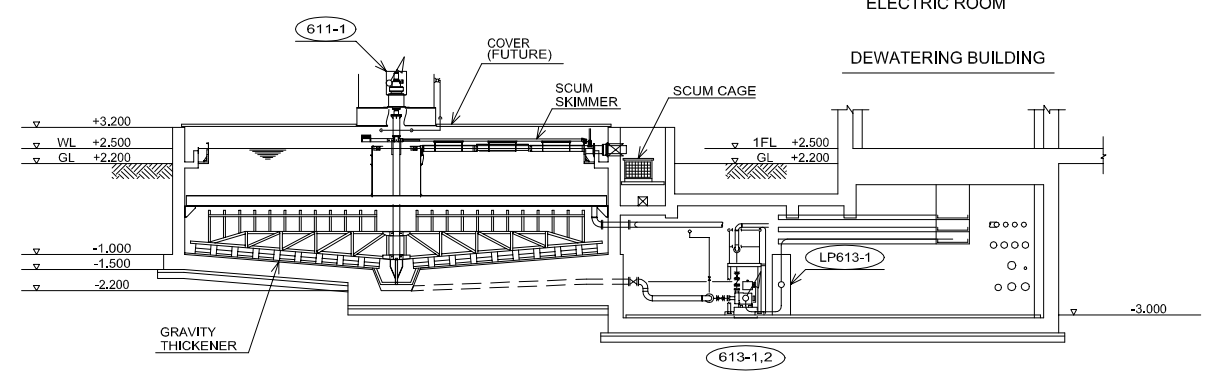
GRAVITY THICKENING EQUIPMENT  
KEY PLAN



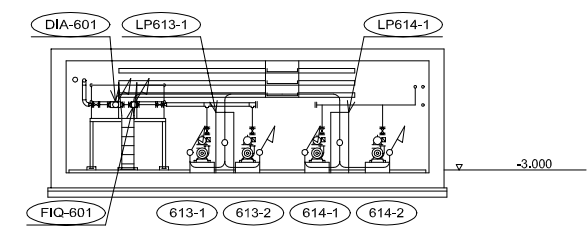
B1 FLOOR PLAN



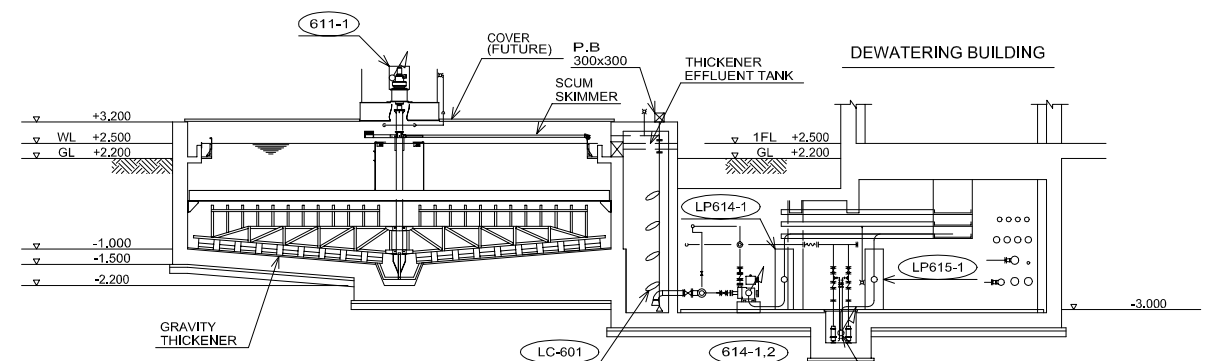
1ST FLOOR PLAN



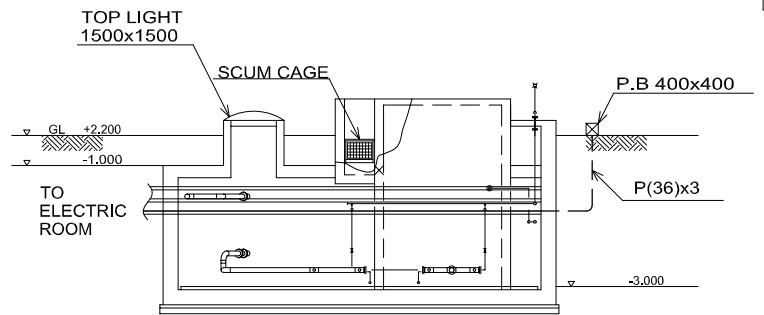
SECTION A-A



SECTION C-C



SECTION B-B



SECTION D-D

MOTOR No	NAME OF EQUIPMENT
611-1	GRAVITY THICKENER
613-1	THICKENED SLUDGE PUMP
613-2	THICKENED SLUDGE PUMP
614-1	THICKENER EFFLUENT PUMP
614-2	THICKENER EFFLUENT PUMP
615-1	FLOOR DRAINAGE PUMP
615-2	FLOOR DRAINAGE PUMP

ITEM No.	INSTRUMENTATION EQUIPMENT
FIQ-601	FLOW METER
DIA-601	DENSITY METER
LC-601	LEVEL SWITCH
LC-605	LEVEL SWITCH

NO.	DATE	DESCRIPTIONS	BY	APRO.

REVISIONS

PROJECT MANAGEMENT UNIT FOR  
HO CHI MINH CITY  
WATER ENVIRONMENT IMPROVEMENT

THE DETAILED DESIGN ON HO CHI MINH CITY  
WATER ENVIRONMENT IMPROVEMENT PROJECT  
IN THE SOCIALIST REPUBLIC OF VIET NAM

PACKAGE E  
WASTEWATER TREATMENT PLANT  
WIRING & PIPING PLAN FOR  
DEWATERING & CENTRIFUGAL  
THICKENER BUILDING  
(1/7)

SCALE : 1/125

JICA JAPAN INTERNATIONAL COOPERATION  
AGENCY ( JICA )

PACIFIC CONSULTANTS INTERNATIONAL

DESIGNED  
KOMIYA NOBUO

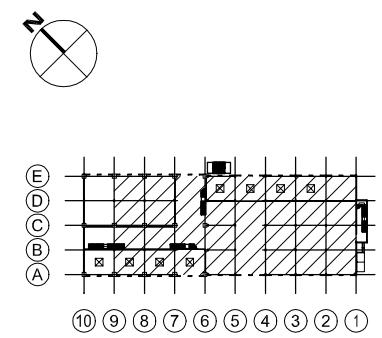
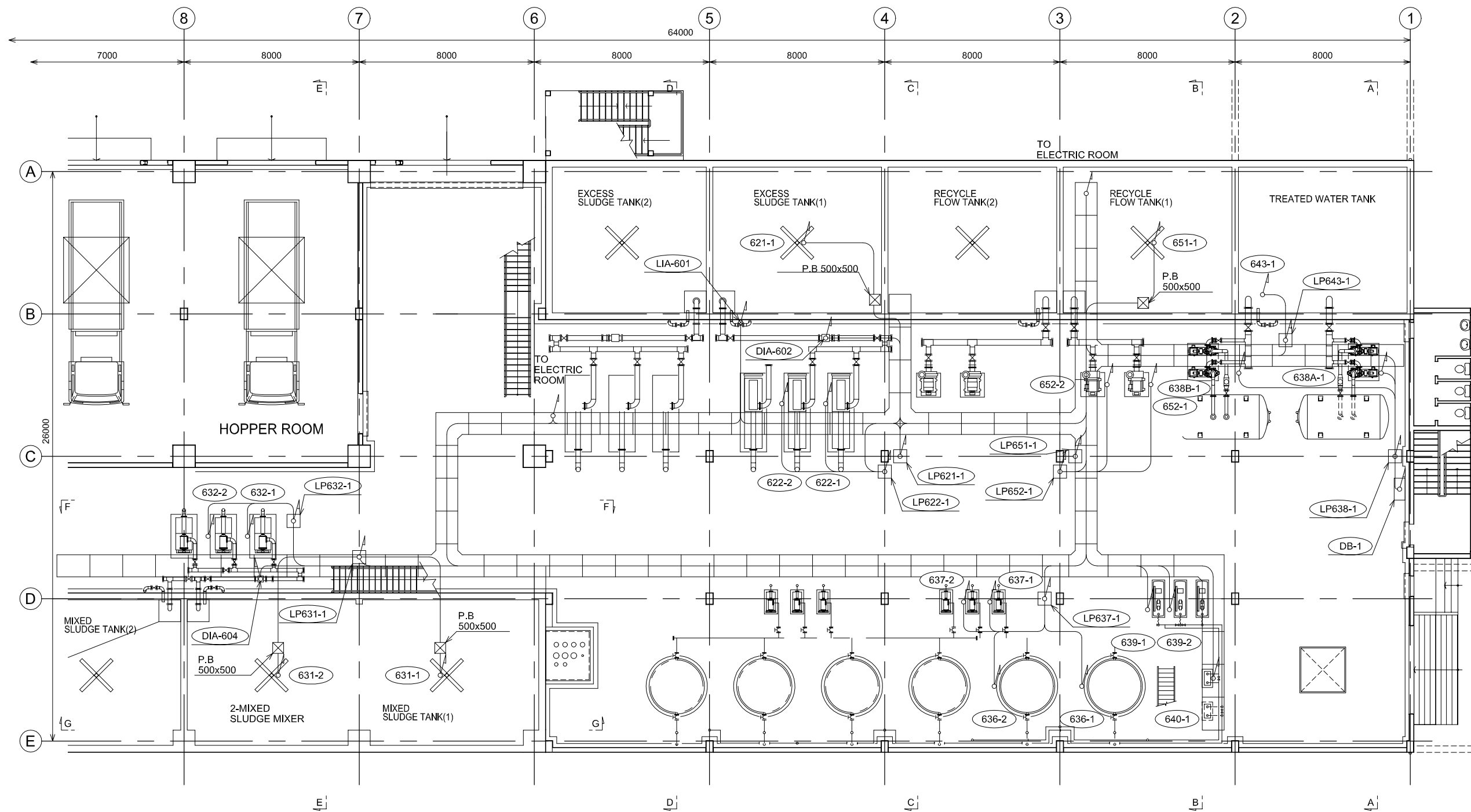
CHECKED  
KONDO MASAMI

DATE : JUNE 2001

DWG. No. PE - WWTP - 536-01

GRAVITY THICKENING EQUIPMENT PLAN





KEY PLAN

NO.	DATE	DESCRIPTIONS	BY	APRO.

REVISIONS

PROJECT MANAGEMENT UNIT FOR  
HO CHI MINH CITY  
WATER ENVIRONMENT IMPROVEMENT

THE DETAILED DESIGN ON HO CHI MINH CITY  
WATER ENVIRONMENT IMPROVEMENT PROJECT  
IN THE SOCIALIST REPUBLIC OF VIET NAM

PACKAGE E  
WASTEWATER TREATMENT PLANT  
  
WIRING & PIPING PLAN FOR  
DEWATERING & CENTRIFUGAL  
THICKENER BUILDING  
(2/7)

SCALE : 1/100

JICA JAPAN INTERNATIONAL COOPERATION  
AGENCY ( JICA )

PACIFIC CONSULTANTS INTERNATIONAL

DESIGNED  
KOMIYA NOBUO

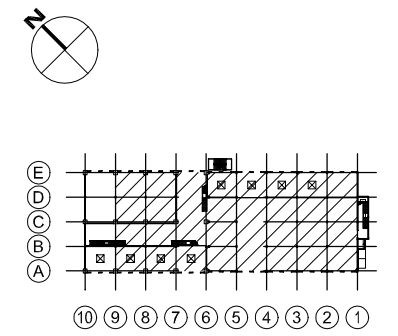
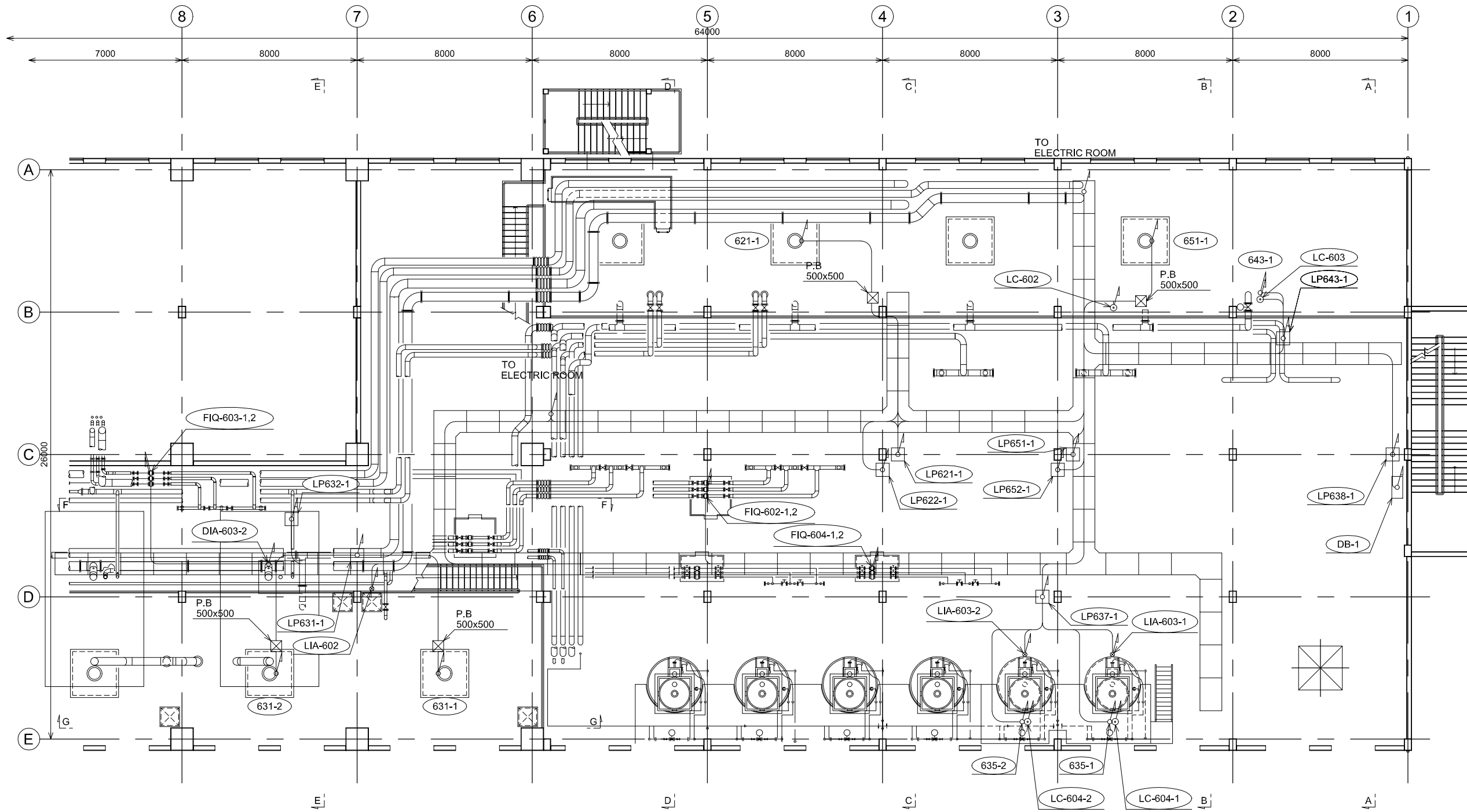
CHECKED  
KONDO MASAMI

DATE : JUNE 2001

DWG. No. PE - WWTP - 536-02

MOTOR No.	NAME OF EQUIPMENT	MOTOR No.	NAME OF EQUIPMENT	MOTOR No.	NAME OF EQUIPMENT	MOTOR No.	NAME OF EQUIPMENT	MOTOR No.	NAME OF EQUIPMENT	ITEM No.	INSTRUMENTATION EQUIPMENT	ITEM No.	INSTRUMENTATION EQUIPMENT
611-1	GRAVITY THICKENER	623A-2	CENTRIFUGAL THICKENER DRIVE MOTOR	633A-2	CENTRIFUGAL DEHYDRATOR DRIVE MOTOR	636-1	POLYMER DISSOLUTION TANK	651-1	RECYCLE FLOW MIXER	LIA-601	LIA FOR EXCESS SLUDGE TANK	LC-602	LC FOR RECYCLE FLOW TANK
613-1	THICKENED SLUDGE PUMP	623B-1	CENTRIFUGAL THICKENER BACKDRIVE MOTOR	633B-1	CENTRIFUGAL DEHYDRATOR BACK DRIVE MOTOR	636-2	POLYMER DISSOLUTION TANK	652-1	RECYCLE FLOW PUMP	LIA-602	LIA FOR MIXED SLUDGE TANK	LC-603	LC FOR TREATED WATER TANK
613-2	THICKENED SLUDGE PUMP	623B-2	CENTRIFUGAL THICKENER BACKDRIVE MOTOR	633B-2	CENTRIFUGAL DEHYDRATOR BACK DRIVE MOTOR	637-1	POLYMER FEED PUMP	652-2	RECYCLE FLOW PUMP	FIQ-602-1	FIQ FOR EXCESS SLUDGE FEED	LC-604	POWDER LEVEL SWITCH FOR POLYMER FEEDER
614-1	THICKENER EFFLUENT PUMP	623C-1	CENTRIFUGAL THICKENER LUBRICATION PUMP	633C-1	CENTRIFUGAL DEHYDRATOR LUBRICATION PUMP	637-2	POLYMER FEED PUMP			FIQ-602-2	FIQ FOR EXCESS SLUDGE FEED		
614-2	THICKENER EFFLUENT PUMP	623C-2	CENTRIFUGAL THICKENER LUBRICATION PUMP	633C-2	CENTRIFUGAL DEHYDRATOR LUBRICATION PUMP	638A-1	WATER SUPPLY PUMP UNIT	DB-1	DB-1 PANEL (ARCHITECTURE WORK)	FIQ-603-1	FIQ FOR MIXED SLUDGE FEED		
615-1	FLOOR DRAINAGE PUMP	624-1	CRANE (20t)	634A-1	CAKE HOPPER	638B-1	WATER SUPPLY PUMP UNIT			FIQ-603-2	FIQ FOR MIXED SLUDGE FEED		
615-2	FLOOR DRAINAGE PUMP	631-1	MIXED SLUDGE MIXER	634A-2	CAKE HOPPER	639-1	AIR COMPRESSOR			FIQ-604-1	FIQ FOR POLYMER FEED		
621-1	EXCESS SLUDGE MIXER	631-2	MIXED SLUDGE MIXER	634B-1	CAKE HOPPER	639-2	AIR COMPRESSOR			FIQ-604-2	FIQ FOR POLYMER FEED		
622-1	EXCESS SLUDGE FEED PUMP	632-1	MIXED SLUDGE FEED PUMP	634B-2	CAKE HOPPER	640-1	DEHUMIDIFIER			DIA-602	DIA FOR EXCESS SLUDGE FEED		
622-2	EXCESS SLUDGE FEED PUMP	632-2	MIXED SLUDGE FEED PUMP	635-1	POLYMER FEEDER	641-1	CRANE (20t)			DIA-603	DIA FOR CENTRIFUGAL THICKENED SLUDGE		
623A-1	CENTRIFUGAL THICKENER DRIVE MOTOR	633A-1	CENTRIFUGAL DEHYDRATOR DRIVE MOTOR	635-2	POLYMER FEEDER	643-1	TREATED WATER INFLOW VALVE			DIA-604	DIA FOR MIXED SLUDGE		

1ST FLOOR LOWER PLAN

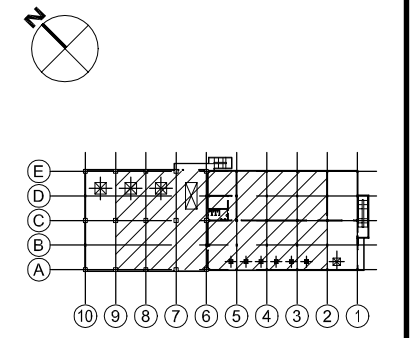
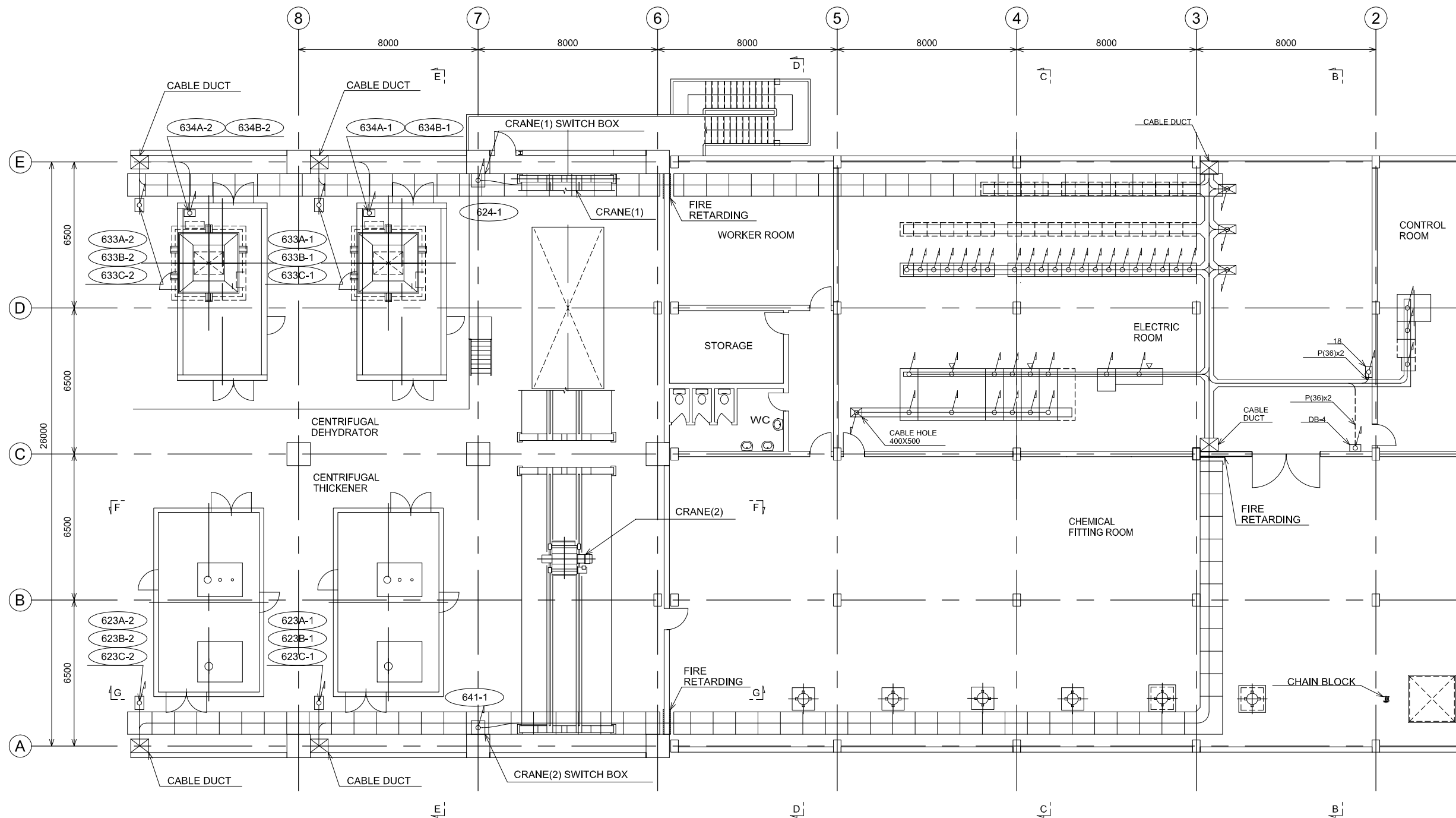


KEY PLAN

MOTOR No.	NAME OF EQUIPMENT	MOTOR No.	NAME OF EQUIPMENT	MOTOR No.	NAME OF EQUIPMENT	MOTOR No.	NAME OF EQUIPMENT	MOTOR No.	NAME OF EQUIPMENT	ITEM No.	INSTRUMENTATION EQUIPMENT	ITEM No.	INSTRUMENTATION EQUIPMENT
611-1	GRAVITY THICKENER	623A-2	CENTRIFUGAL THICKENER DRIVE MOTOR	633A-2	CENTRIFUGAL DEHYDRATOR DRIVE MOTOR	636-1	POLYMER DISSOLUTION TANK	651-1	RECYCLE FLOW MIXER	LIA-601	LIA FOR EXCESS SLUDGE TANK	LC-602	LC FOR RECYCLE FLOW TANK
613-1	THICKENED SLUDGE PUMP	623B-1	CENTRIFUGAL THICKENER BACKDRIVE MOTOR	633B-1	CENTRIFUGAL DEHYDRATOR BACK DRIVE MOTOR	636-2	POLYMER DISSOLUTION TANK	652-1	RECYCLE FLOW PUMP	LIA-602	LIA FOR MIXED SLUDGE TANK	LC-603	LC FOR TREATED WATER TANK
613-2	THICKENED SLUDGE PUMP	623B-2	CENTRIFUGAL THICKENER BACKDRIVE MOTOR	633B-2	CENTRIFUGAL DEHYDRATOR BACK DRIVE MOTOR	637-1	POLYMER FEED PUMP	652-2	RECYCLE FLOW PUMP	FIQ-602-1	FIQ FOR EXCESS SLUDGE FEED	LC-604	POWDER LEVEL SWITCH FOR POLYMER FEEDER
614-1	THICKENER EFFLUENT PUMP	623C-1	CENTRIFUGAL THICKENER LUBRICATION PUMP	633C-1	CENTRIFUGAL DEHYDRATOR LUBRICATION PUMP	637-2	POLYMER FEED PUMP			FIQ-602-2	FIQ FOR EXCESS SLUDGE FEED		
614-2	THICKENER EFFLUENT PUMP	623C-2	CENTRIFUGAL THICKENER LUBRICATION PUMP	633C-2	CENTRIFUGAL DEHYDRATOR LUBRICATION PUMP	638A-1	WATER SUPPLY PUMP UNIT	DB-1	DB-1 PANEL (ARCHITECTURE WORK)	FIQ-603-1	FIQ FOR MIXED SLUDGE FEED		
615-1	FLOOR DRAINAGE PUMP	624-1	CRANE (20t)	634A-1	CAKE HOPPER	638B-1	WATER SUPPLY PUMP UNIT			FIQ-603-2	FIQ FOR MIXED SLUDGE FEED		
615-2	FLOOR DRAINAGE PUMP	631-1	MIXED SLUDGE MIXER	634A-2	CAKE HOPPER	639-1	AIR COMPRESSOR			FIQ-604-1	FIQ FOR POLYMER FEED		
621-1	EXCESS SLUDGE MIXER	631-2	MIXED SLUDGE MIXER	634B-1	CAKE HOPPER	639-2	AIR COMPRESSOR			FIQ-604-2	FIQ FOR POLYMER FEED		
622-1	EXCESS SLUDGE FEED PUMP	632-1	MIXED SLUDGE FEED PUMP	634B-2	CAKE HOPPER	640-1	DEHUMIDIFIER			DIA-602	DIA FOR EXCESS SLUDGE FEED		
622-2	EXCESS SLUDGE FEED PUMP	632-2	MIXED SLUDGE FEED PUMP	635-1	POLYMER FEEDER	641-1	CRANE (20t)			DIA-603	DIA FOR CENTRIFUGAL THICKENED SLUDGE		
623A-1	CENTRIFUGAL THICKENER DRIVE MOTOR	633A-1	CENTRIFUGAL DEHYDRATOR DRIVE MOTOR	635-2	POLYMER FEEDER	643-1	TREATED WATER INFLOW VALVE			DIA-604	DIA FOR MIXED SLUDGE		

1ST FLOOR UPPER PLAN

NO.	DATE	DESCRIPTIONS	BY	APRO.
REVISIONS				
PROJECT MANAGEMENT UNIT FOR HO CHI MINH CITY WATER ENVIRONMENT IMPROVEMENT				
THE DETAILED DESIGN ON HO CHI MINH CITY WATER ENVIRONMENT IMPROVEMENT PROJECT IN THE SOCIALIST REPUBLIC OF VIET NAM				
PACKAGE E WASTEWATER TREATMENT PLANT  WIRING & PIPING PLAN FOR DEWATERING & CENTRIFUGAL THICKENER BUILDING (3/7)				
SCALE : 1/100				
JAPAN INTERNATIONAL COOPERATION AGENCY ( JICA )				
PACIFIC CONSULTANTS INTERNATIONAL				
DESIGNED KOMIYA NOBUO		CHECKED KONDO MASAMI		
DATE : JUNE 2001		DWG. No. PE - WWTP - 536-03		

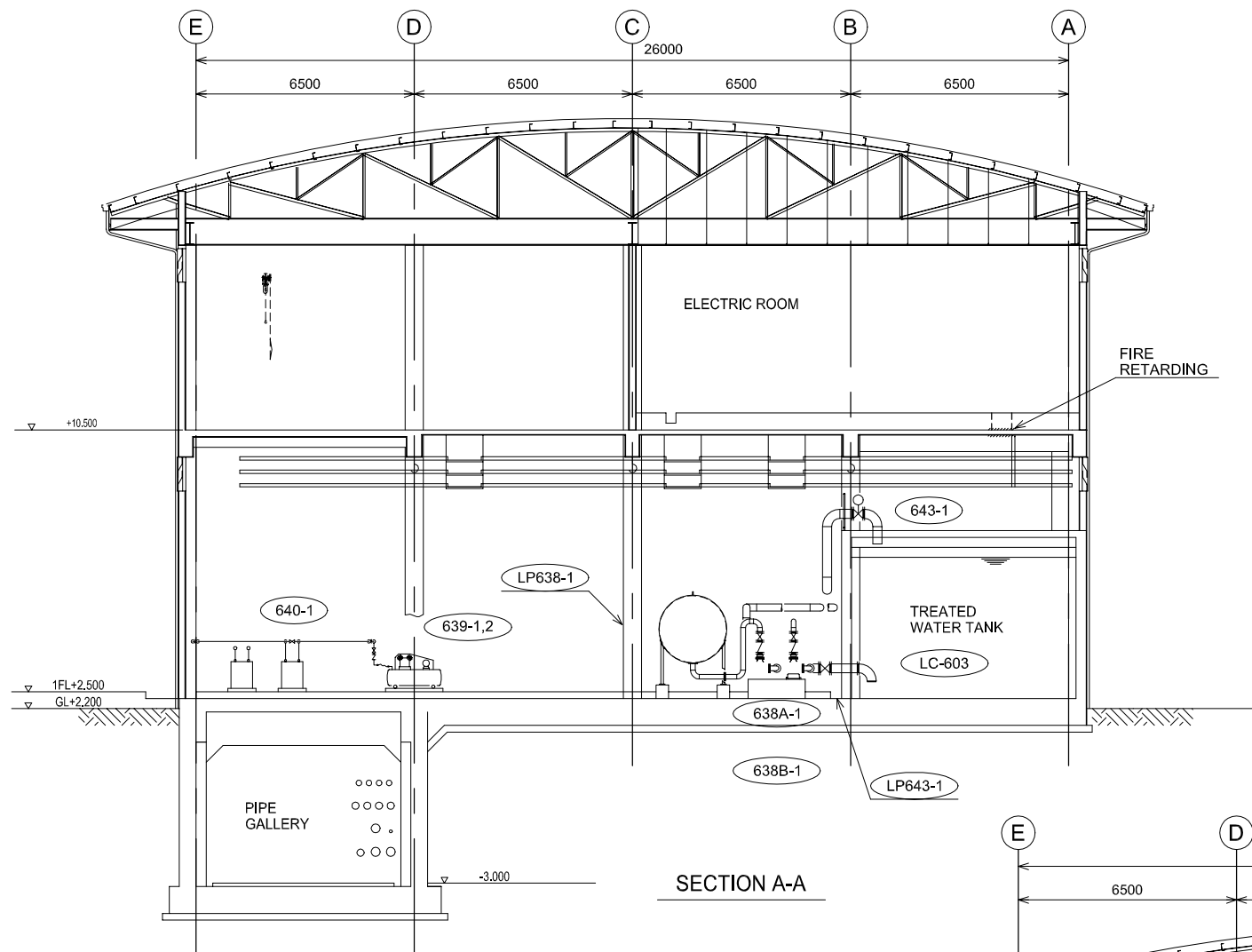


MOTOR No.	NAME OF EQUIPMENT	MOTOR No.	NAME OF EQUIPMENT	MOTOR No.	NAME OF EQUIPMENT	MOTOR No.	NAME OF EQUIPMENT	MOTOR No.	NAME OF EQUIPMENT	ITEM No.	INSTRUMENTATION EQUIPMENT	ITEM No.	INSTRUMENTATION EQUIPMENT
611-1	GRAVITY THICKENER	623A-2	CENTRIFUGAL THICKENER DRIVE MOTOR	633A-2	CENTRIFUGAL DEHYDRATOR DRIVE MOTOR	636-1	POLYMER DISSOLUTION TANK	651-1	RECYCLE FLOW MIXER	LIA-601	LIA FOR EXCESS SLUDGE TANK	LC-602	LC FOR RECYCLE FLOW TANK
613-1	THICKENED SLUDGE PUMP	623B-1	CENTRIFUGAL THICKENER BACKDRIVE MOTOR	633B-1	CENTRIFUGAL DEHYDRATOR BACK DRIVE MOTOR	636-2	POLYMER DISSOLUTION TANK	652-1	RECYCLE FLOW PUMP	LIA-602	LIA FOR MIXED SLUDGE TANK	LC-603	LC FOR TREATED WATER TANK
613-2	THICKENED SLUDGE PUMP	623B-2	CENTRIFUGAL THICKENER BACKDRIVE MOTOR	633B-2	CENTRIFUGAL DEHYDRATOR BACK DRIVE MOTOR	637-1	POLYMER FEED PUMP	652-2	RECYCLE FLOW PUMP	FIQ-602-1	FIQ FOR EXCESS SLUDGE FEED	LC-604	POWDER LEVEL SWITCH FOR POLYMER FEEDER
614-1	THICKENER EFFLUENT PUMP	623C-1	CENTRIFUGAL THICKENER LUBRICATION PUMP	633C-1	CENTRIFUGAL DEHYDRATOR LUBRICATION PUMP	637-2	POLYMER FEED PUMP			FIQ-602-2	FIQ FOR EXCESS SLUDGE FEED		
614-2	THICKENER EFFLUENT PUMP	623C-2	CENTRIFUGAL THICKENER LUBRICATION PUMP	633C-2	CENTRIFUGAL DEHYDRATOR LUBRICATION PUMP	638A-1	WATER SUPPLY PUMP UNIT	18	PIPE GALLERY LIGHTING DISTRIBUTION BOARD	FIQ-603-1	FIQ FOR MIXED SLUDGE FEED		
615-1	FLOOR DRAINAGE PUMP	624-1	CRANE (20)	634A-1	CAKE HOPPER	638B-1	WATER SUPPLY PUMP UNIT	DB-4	DB-4 PANEL (ARCHITECTURE WORK)	FIQ-603-2	FIQ FOR MIXED SLUDGE FEED		
615-2	FLOOR DRAINAGE PUMP	631-1	MIXED SLUDGE MIXER	634A-2	CAKE HOPPER	639-1	AIR COMPRESSOR			FIQ-604-1	FIQ FOR POLYMER FEED		
621-1	EXCESS SLUDGE MIXER	631-2	MIXED SLUDGE MIXER	634B-1	CAKE HOPPER	639-2	AIR COMPRESSOR			FIQ-604-2	FIQ FOR POLYMER FEED		
622-1	EXCESS SLUDGE FEED PUMP	632-1	MIXED SLUDGE FEED PUMP	634B-2	CAKE HOPPER	640-1	DEHUMIDIFIER			DIA-602	DIA FOR EXCESS SLUDGE FEED		
622-2	EXCESS SLUDGE FEED PUMP	632-2	MIXED SLUDGE FEED PUMP	635-1	POLYMER FEEDER	641-1	CRANE (20)			DIA-603	DIA FOR CENTRIFUGAL THICKENED SLUDGE		
623A-1	CENTRIFUGAL THICKENER DRIVE MOTOR	633A-1	CENTRIFUGAL DEHYDRATOR DRIVE MOTOR	635-2	POLYMER FEEDER	643-1	TREATED WATER INFLOW VALVE			DIA-604	DIA FOR MIXED SLUDGE		

2ND FLOOR PLAN

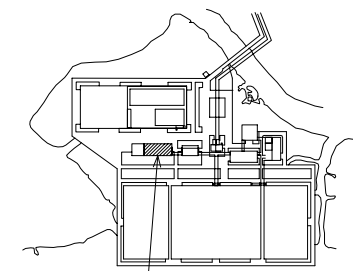
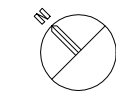
NO.	DATE	DESCRIPTIONS	BY	APRO.
REVISIONS				
PROJECT MANAGEMENT UNIT FOR HO CHI MINH CITY WATER ENVIRONMENT IMPROVEMENT				
THE DETAILED DESIGN ON HO CHI MINH CITY WATER ENVIRONMENT IMPROVEMENT PROJECT IN THE SOCIALIST REPUBLIC OF VIET NAM				
PACKAGE E WASTEWATER TREATMENT PLANT WIRING & PIPING PLAN FOR DEWATERING & CENTRIFUGAL THICKENER BUILDING (4/7)				
SCALE : 1/100				
JAPAN INTERNATIONAL COOPERATION AGENCY ( JICA )				
PACIFIC CONSULTANTS INTERNATIONAL				
DESIGNED KOMIYA NOBUO		CHECKED KONDO MASAMI		
DATE : JUNE 2001		DWG. No. PE - WWTP - 536-04		





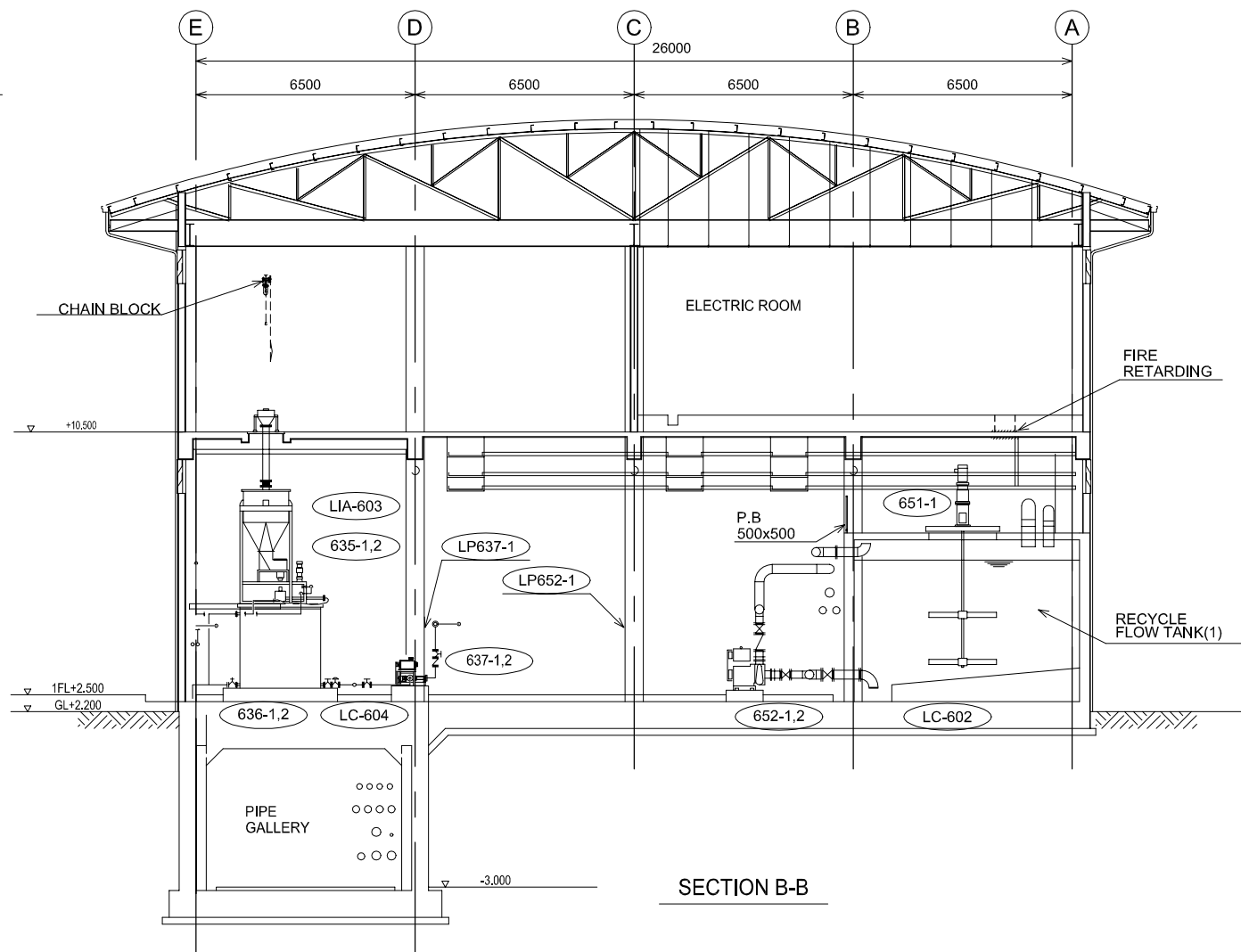
SECTION A-A

MOTOR No.	NAME OF EQUIPMENT	ITEM No.	INSTRUMENTATION EQUIPMENT
635-1	POLYMER FEEDER	LIA-603	LIA FOR TREATED WATER TANK
635-2	POLYMER FEEDER	LC-602	LC FOR RECYCLE FLOW TANK
636-1	POLYMER DISSOLUTION TANK	LC-603	LC FOR TREATED WATER TANK
636-2	POLYMER DISSOLUTION TANK	LC-604	POWDER LEVEL SWITCH FOR POLYMER FEEDER
637-1	POLYMER FEED PUMP		
637-2	POLYMER FEED PUMP		
638A-1	WATER SUPPLY PUMP UNIT		
638B-1	WATER SUPPLY PUMP UNIT		
639-1	AIR COMPRESSOR		
639-2	AIR COMPRESSOR		
640-1	DEHUMIDIFIER		
643-1	TREATED WATER INFLOW VALVE		
651-1	RECYCLE FLOW MIXER		
652-1	RECYCLE FLOW PUMP		
652-2	RECYCLE FLOW PUMP		



DEWATERING BUILDING

KEY PLAN



SECTION B-B


NO.	DATE	DESCRIPTIONS	BY	APRO.
-----	------	--------------	----	-------

REVISIONS

PROJECT MANAGEMENT UNIT FOR  
HO CHI MINH CITY  
WATER ENVIRONMENT IMPROVEMENT

THE DETAILED DESIGN ON HO CHI MINH CITY  
WATER ENVIRONMENT IMPROVEMENT PROJECT  
IN THE SOCIALIST REPUBLIC OF VIET NAM

PACKAGE E  
WASTEWATER TREATMENT PLANT  
WIRING & PIPING PLAN FOR  
DEWATERING & CENTRIFUGAL  
THICKENER BUILDING  
(5/7)

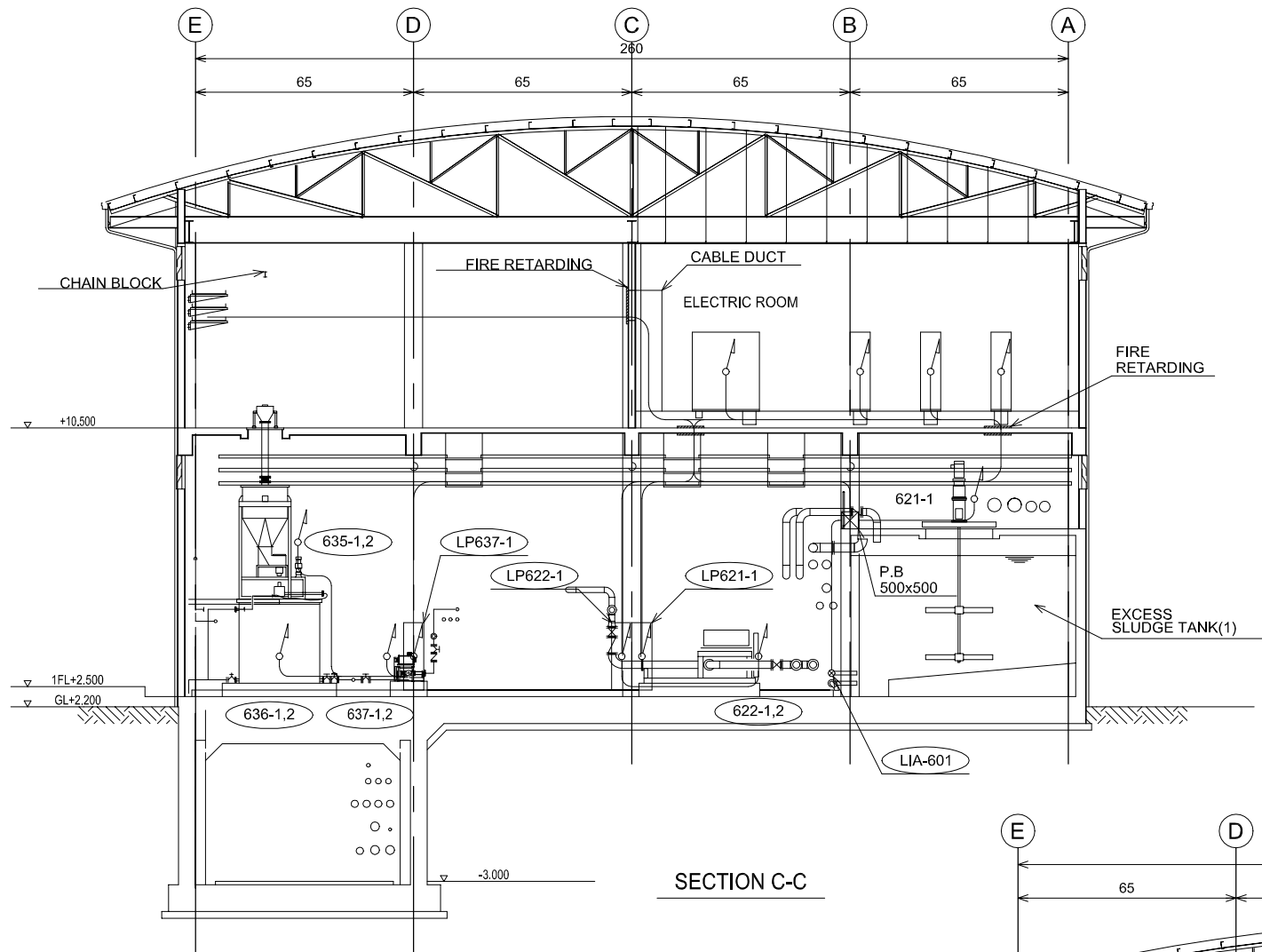
SCALE : 1/100

JICA JAPAN INTERNATIONAL COOPERATION  
AGENCY ( JICA )

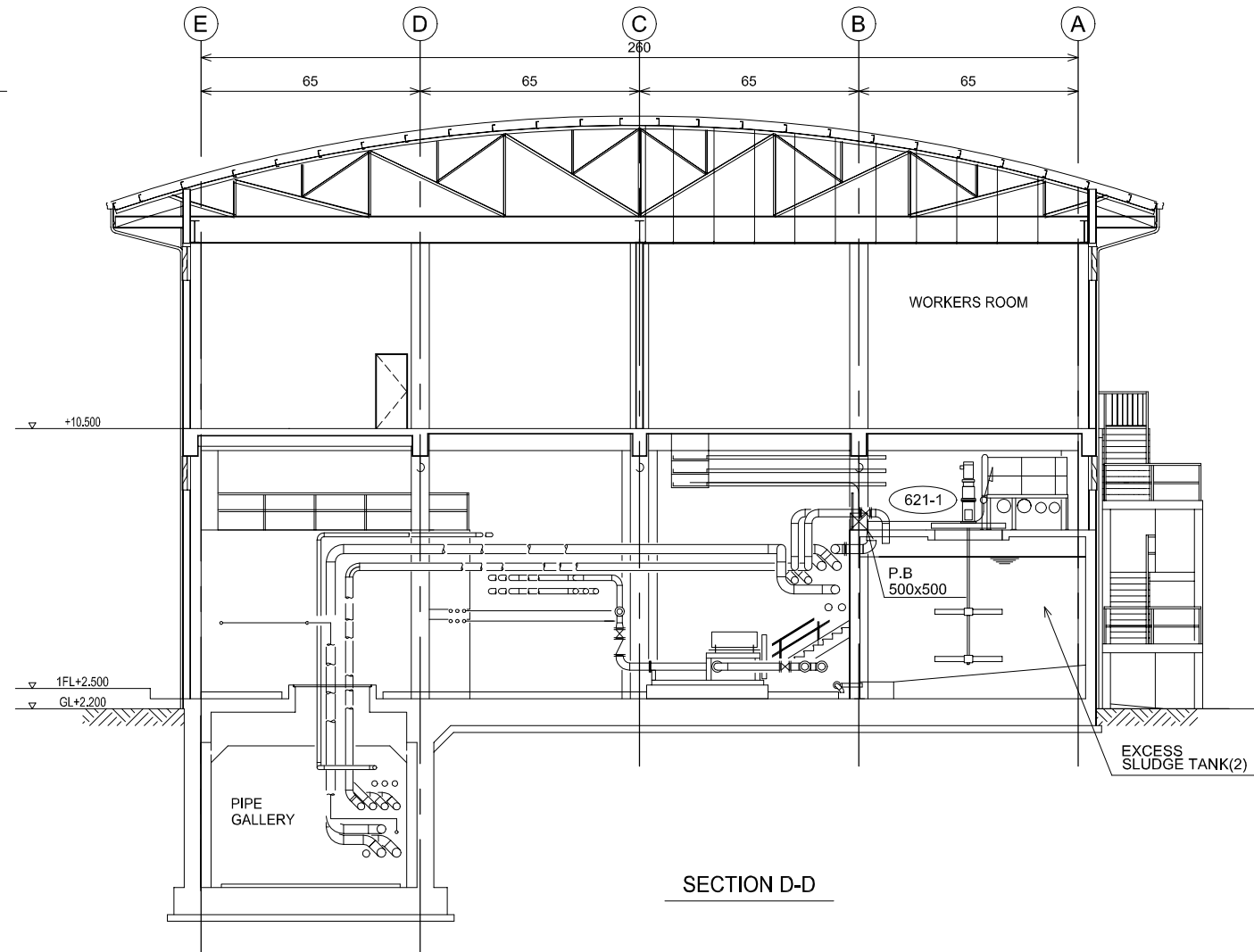
PACIFIC CONSULTANTS INTERNATIONAL

DESIGNED KOMIYA NOBUO	CHECKED KONDO MASAMI
--------------------------	-------------------------

DATE : JUNE 2001 DWG. No. PE - WWTP - 536-05



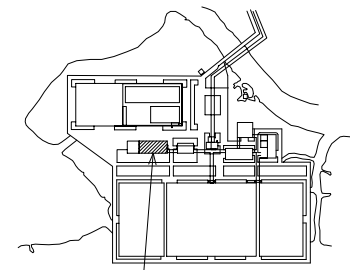
SECTION C-C



SECTION D-D

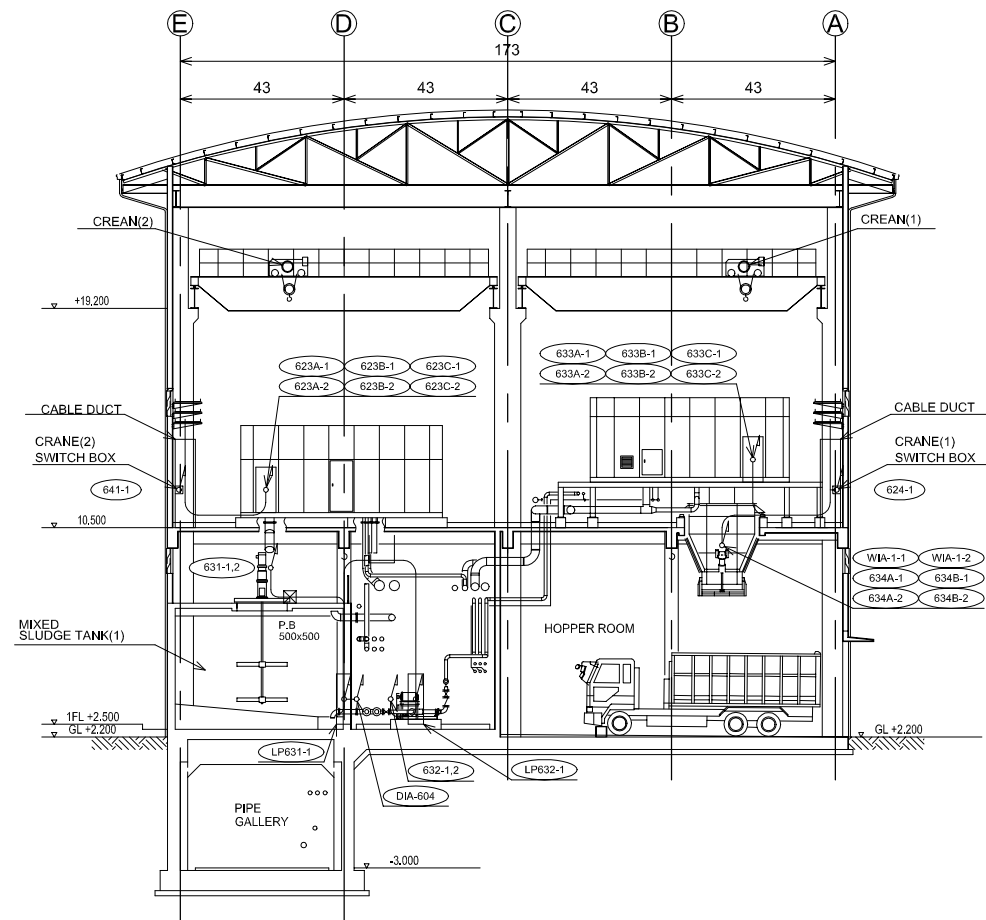
MOTOR No.	NAME OF EQUIPMENT
621-1	EXCESS SLUDGE MIXER
622-1	EXCESS SLUDGE FEED PUMP
622-2	EXCESS SLUDGE FEED PUMP
635-1	POLYMER FEEDER
635-2	POLYMER FEEDER
636-1	POLYMER DISSOLUTION TANK
636-2	POLYMER DISSOLUTION TANK
637-1	POLYMER FEED PUMP
637-2	POLYMER FEED PUMP

ITEM No.	INSTRUMENTATION EQUIPMENT
LIA-601	LIA FOR EXCESS SLUDGE TANK



Dewatering Building  
KEY PLAN

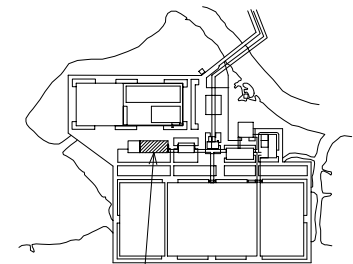
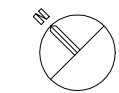
NO.	DATE	DESCRIPTIONS	BY	APRO.
REVISIONS				
PROJECT MANAGEMENT UNIT FOR HO CHI MINH CITY WATER ENVIRONMENT IMPROVEMENT				
THE DETAILED DESIGN ON HO CHI MINH CITY WATER ENVIRONMENT IMPROVEMENT PROJECT IN THE SOCIALIST REPUBLIC OF VIET NAM				
PACKAGE E WASTEWATER TREATMENT PLANT  WIRING & PIPING PLAN FOR DEWATERING & CENTRIFUGAL THICKENER BUILDING (6/7)				
SCALE : 1/100				
JAPAN INTERNATIONAL COOPERATION AGENCY ( JICA )				
PACIFIC CONSULTANTS INTERNATIONAL				
DESIGNED KOMIYA NOBUO			CHECKED KONDO MASAMI	
DATE : JUNE 2001		DWG. No. PE - WWTP - 536-06		



SECTION E-E

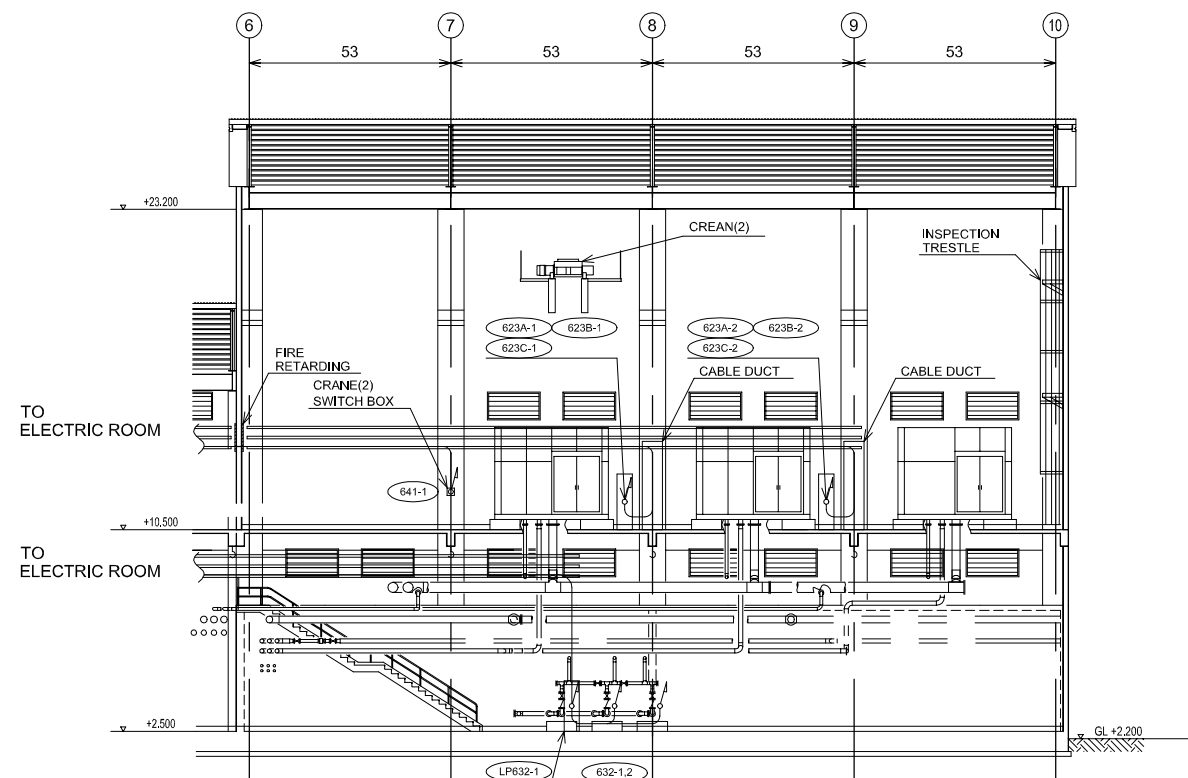
MOTOR No.	NAME OF EQUIPMENT	MOTOR No.	NAME OF EQUIPMENT
623A-1	CENTRIFUGAL THICKENER DRIVE MOTOR	633A-1	CENTRIFUGAL DEHYDRATOR DRIVE MOTOR
623A-2	CENTRIFUGAL THICKENER DRIVE MOTOR	633A-2	CENTRIFUGAL DEHYDRATOR DRIVE MOTOR
623B-1	CENTRIFUGAL THICKENER BACKDRIVE MOTOR	633B-1	CENTRIFUGAL DEHYDRATOR BACK DRIVE MOTOR
623B-2	CENTRIFUGAL THICKENER BACKDRIVE MOTOR	633B-2	CENTRIFUGAL DEHYDRATOR BACK DRIVE MOTOR
623C-1	CENTRIFUGAL THICKENER LUBRICATION PUMP	633C-1	CENTRIFUGAL DEHYDRATOR LUBRICATION PUMP
623C-2	CENTRIFUGAL THICKENER LUBRICATION PUMP	633C-2	CENTRIFUGAL DEHYDRATOR LUBRICATION PUMP
624-1	CRANE (20t)	634A-1	CAKE HOPPER
631-1	MIXED SLUDGE MIXER	634A-2	CAKE HOPPER
631-2	MIXED SLUDGE MIXER	634B-1	CAKE HOPPER
632-1	MIXED SLUDGE FEED PUMP	634B-2	CAKE HOPPER
632-2	MIXED SLUDGE FEED PUMP	641-1	CRANE (20t)

ITEM No.	INSTRUMENTATION EQUIPMENT	ITEM No.	INSTRUMENTATION EQUIPMENT
WIA-1-1	WIA FOR CAKE HOPPER	DIA-604	DIA FOR MIXED SLUDGE
WIA-1-2	WIA FOR CAKE HOPPER		

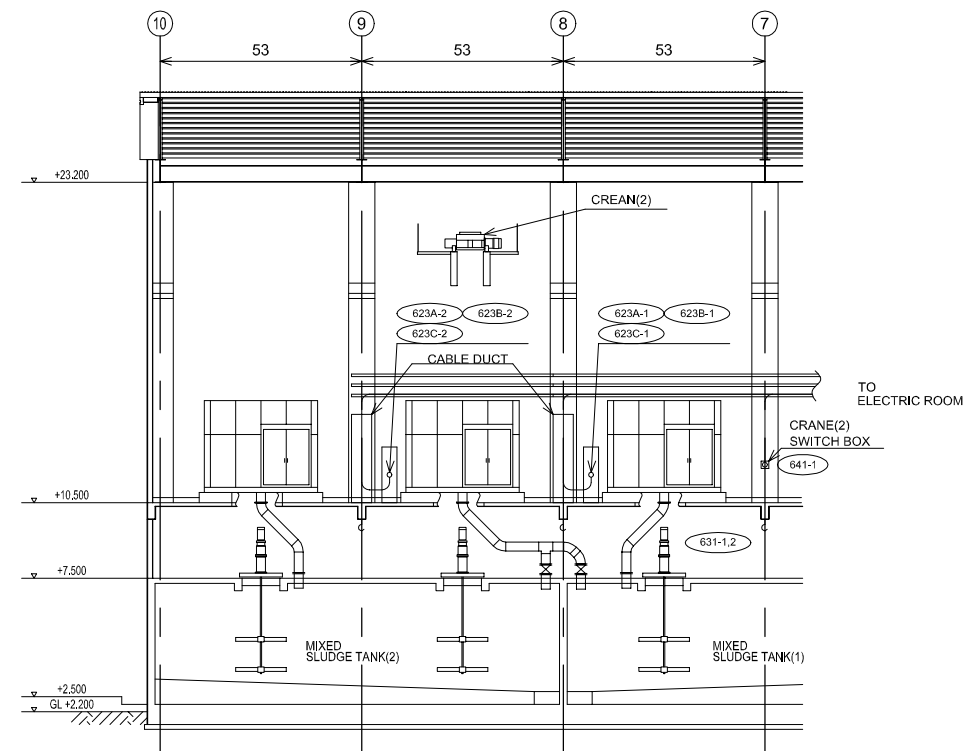


DEWATERING BUILDING

KEY PLAN



SECTION F-F



SECTION G-G

NO.	DATE	DESCRIPTIONS	BY	APRO.

REVISIONS

PROJECT MANAGEMENT UNIT FOR  
HO CHI MINH CITY  
WATER ENVIRONMENT IMPROVEMENT

THE DETAILED DESIGN ON HO CHI MINH CITY  
WATER ENVIRONMENT IMPROVEMENT PROJECT  
IN THE SOCIALIST REPUBLIC OF VIET NAM

PACKAGE E  
WASTEWATER TREATMENT PLANT

WIRING & PIPING PLAN FOR  
DEWATERING & CENTRIFUGAL  
THICKENER BUILDING  
(7/7)

SCALE : 1/150

JICA JAPAN INTERNATIONAL COOPERATION  
AGENCY ( JICA )

PACIFIC CONSULTANTS INTERNATIONAL

DESIGNED  
KOMIYA NOBUO

CHECKED  
KONDO MASAMI

DATE : JUNE 2001 DWG. No. PE - WWTP - 536-07