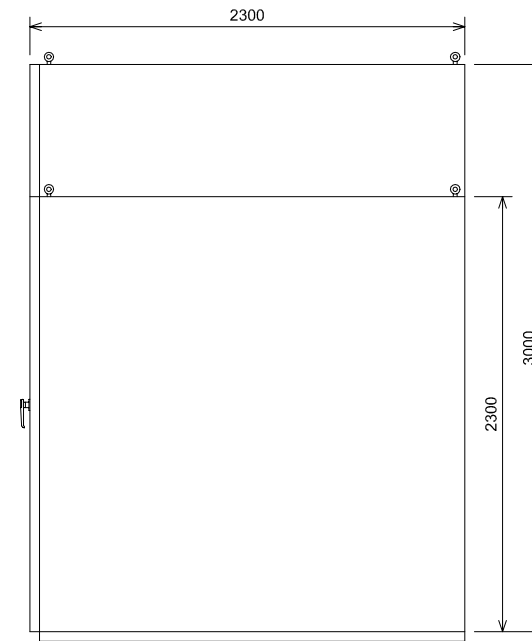
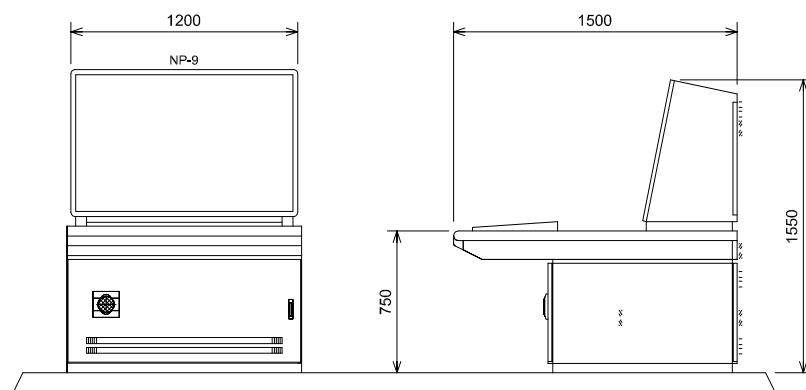


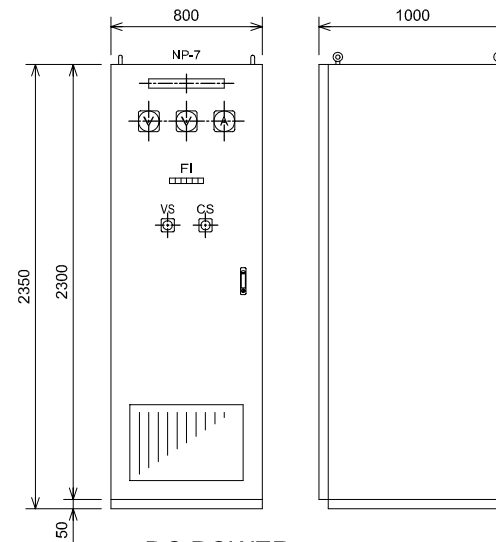
FRONT VIEW



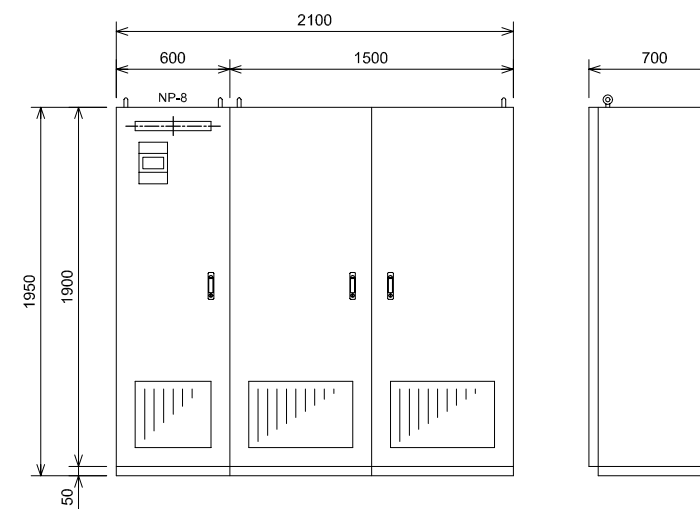
SIDE VIEW



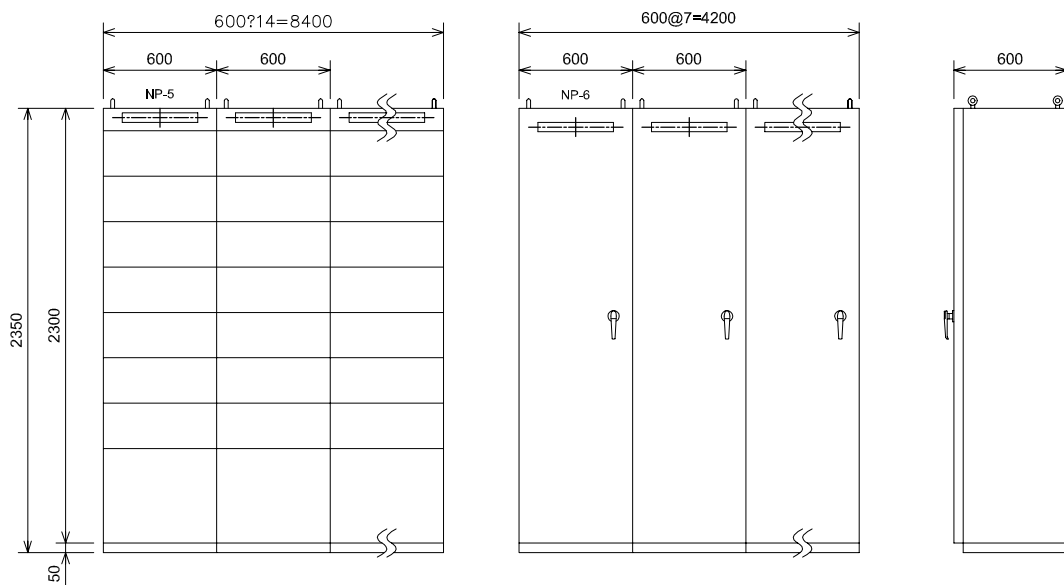
SUPERVISORY PANEL



DC POWER SUPPLY SYSTEM



UPS



CONTROL CENTER & Ry PANEL

NAME PLATE(NP)

No.	DESCRIPTION
NP-1	3.3kV INCOMING PANEL
NP-2	2500kVA TR PANEL
NP-3	LOW VOLTAGE SWG
NP-4	AC DISTRIBUTION PANEL
NP-5	CC-600-1-1,2
NP-6	Ry PANEL-1,2
NP-7	DC POWER SUPPLY SYSTEM
NP-8	UPS
NP-9	SUPERVISORY PANEL

NO.	DATE	DESCRIPTIONS	BY	APRO.

REVISIONS

PROJECT MANAGEMENT UNIT FOR
HO CHI MINH CITY
WATER ENVIRONMENT IMPROVEMENT

THE DETAILED DESIGN ON HO CHI MINH CITY
WATER ENVIRONMENT IMPROVEMENT PROJECT
IN THE SOCIALIST REPUBLIC OF VIET NAM

PACKAGE E
WASTEWATER TREATMENT PLANT

OUTLINE DIMENSION OF SWITCHGEARS FOR
DEWATERING ELECTRIC ROOM

SCALE : 1/20

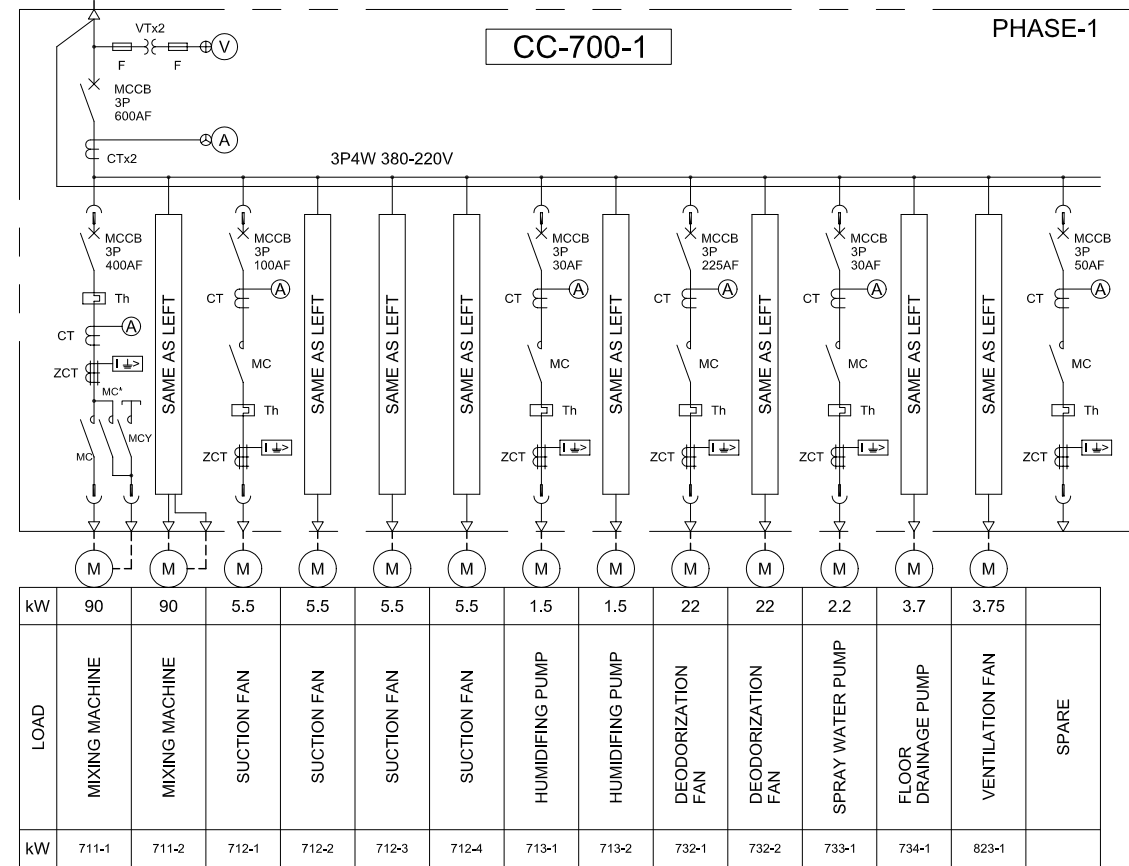
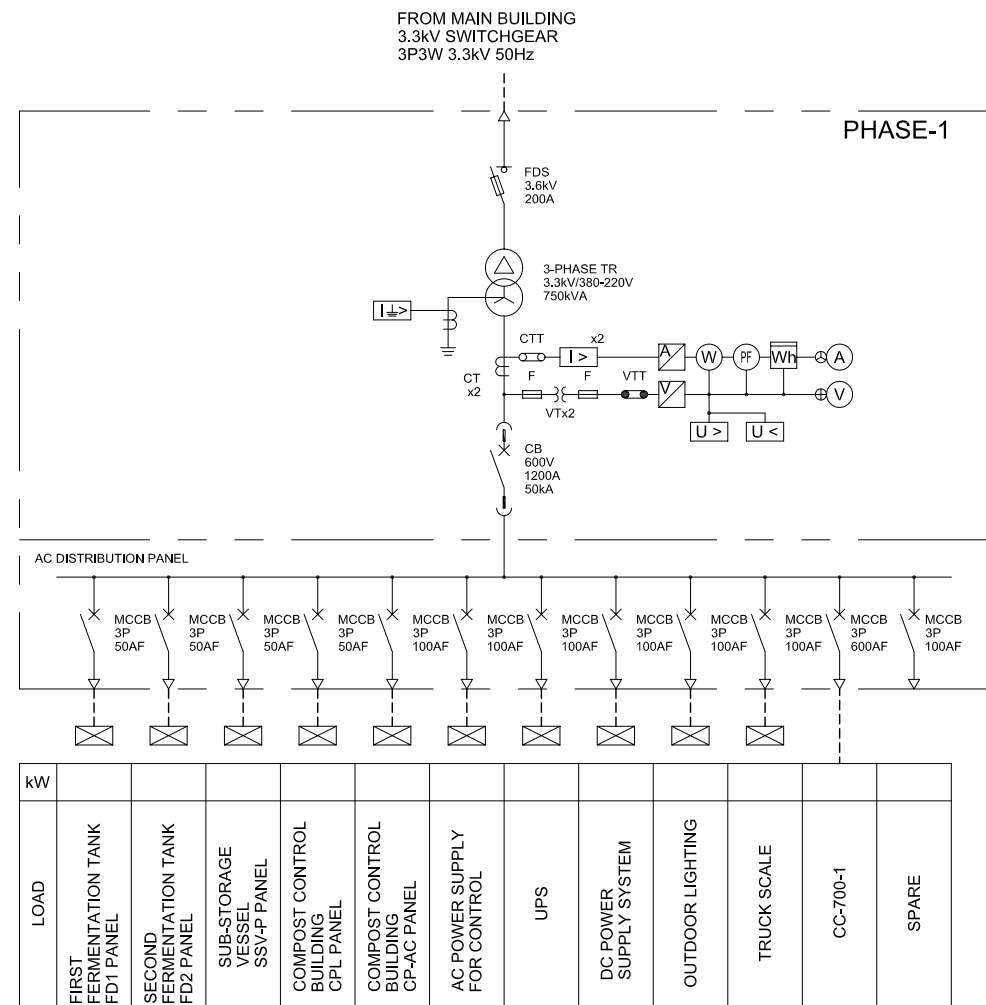
JAPAN INTERNATIONAL COOPERATION AGENCY (JICA)

PACIFIC CONSULTANTS INTERNATIONAL

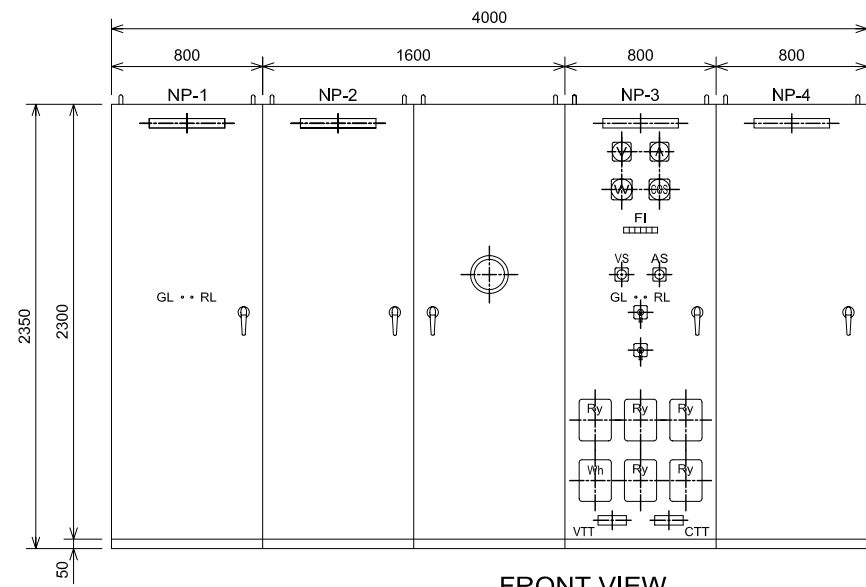
DESIGNED
KOMIYA NOBUO

CHECKED
KONDO MASAMI

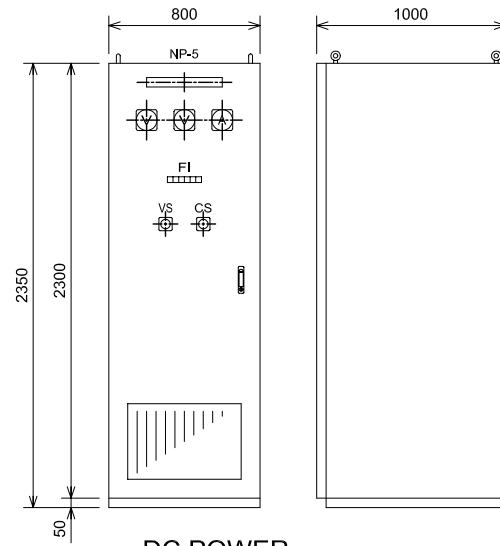
DATE : JUNE 2001 DWG. No. PE - WWTP - 521



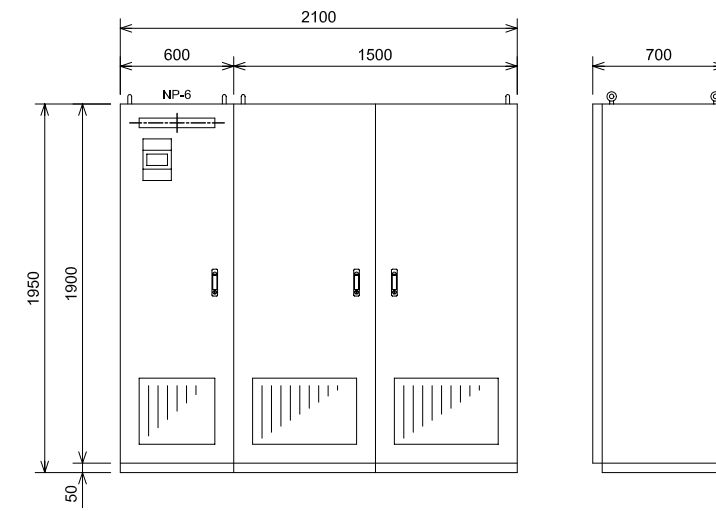
NO.	DATE	DESCRIPTIONS	BY	APRO.
REVISIONS				
PROJECT MANAGEMENT UNIT FOR HO CHI MINH CITY WATER ENVIRONMENT IMPROVEMENT				
THE DETAILED DESIGN ON HO CHI MINH CITY WATER ENVIRONMENT IMPROVEMENT PROJECT IN THE SOCIALIST REPUBLIC OF VIET NAM				
PACKAGE E WASTEWATER TREATMENT PLANT				
SINGLE LINE DIAGRAM FOR COMPOST CONTROL BUILDING ELECTRIC ROOM				
SCALE : N.T.S				
JAPAN INTERNATIONAL COOPERATION AGENCY (JICA)				
PACIFIC CONSULTANTS INTERNATIONAL				
DESIGNED KOMIYA NOBUO		CHECKED KONDO MASAMI		
DATE : JUNE 2001		DWG. No. PE - WWTP - 523		



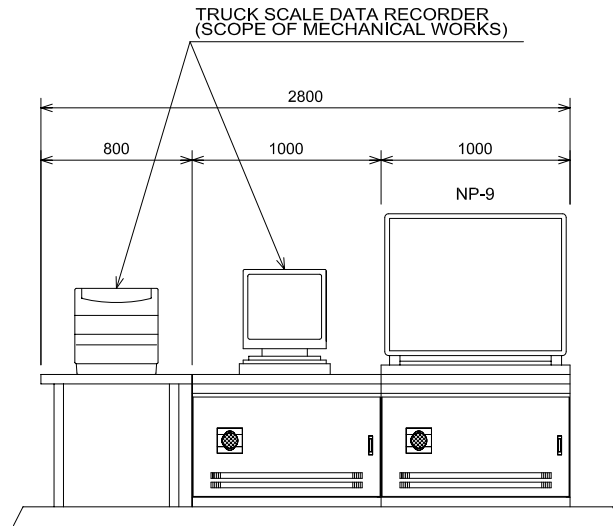
FRONT VIEW



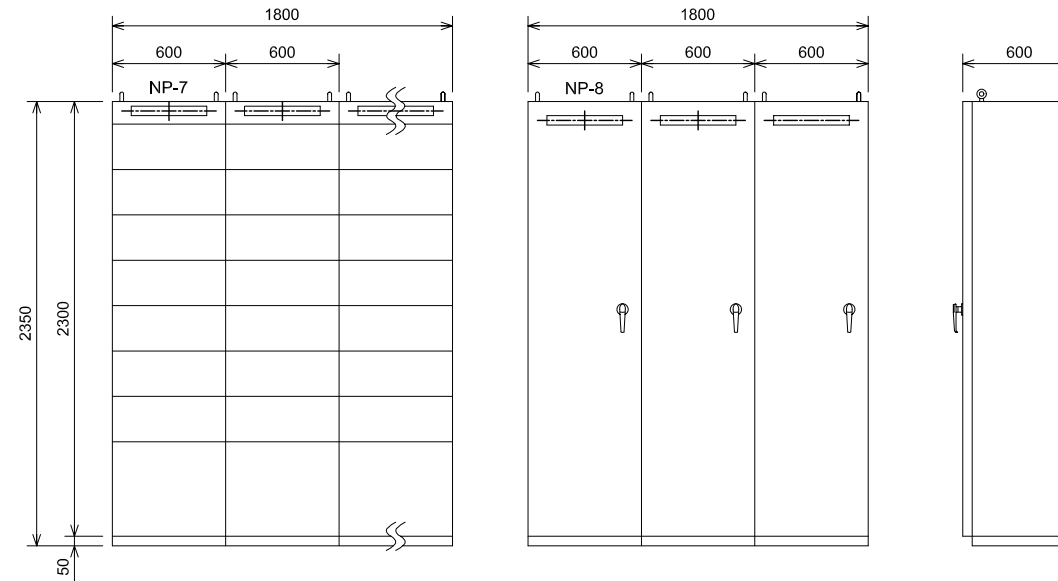
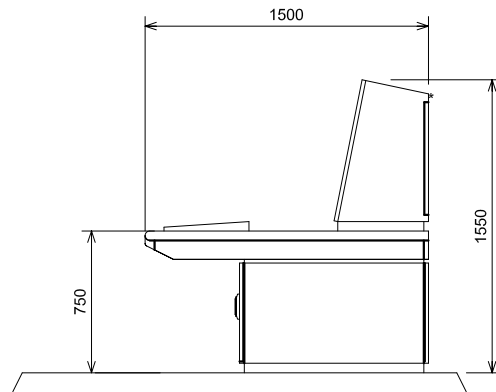
DC POWER SUPPLY SYSTEM



UPS



SUPERVISORY PANEL



CONTROL CENTER & Ry PANEL

NAME PLATE(NP)

No.	DESCRIPTION
NP-1	3.3kV INCOMING PANEL
NP-2	750kVA TR PANEL
NP-3	LOW VOLTAGE SWG
NP-4	AC DISTRIBUTION PANEL
NP-5	DC POWER SUPPLY SYSTEM
NP-6	UPS
NP-7	CC-700-1,2
NP-8	Ry PANEL
NP-9	SUPERVISORY PANEL

NO.	DATE	DESCRIPTIONS	BY	APRO.

REVISIONS

PROJECT MANAGEMENT UNIT FOR
HO CHI MINH CITY
WATER ENVIRONMENT IMPROVEMENT

THE DETAILED DESIGN ON HO CHI MINH CITY
WATER ENVIRONMENT IMPROVEMENT PROJECT
IN THE SOCIALIST REPUBLIC OF VIET NAM

PACKAGE E
WASTEWATER TREATMENT PLANT

OUTLINE DIMENSION OF SWITCHGEARS
FOR COMPOST CONTROL BUILDING
ELECTRIC ROOM

SCALE : 1/20

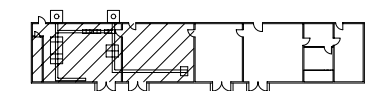
JICA JAPAN INTERNATIONAL COOPERATION
AGENCY (JICA)

PACIFIC CONSULTANTS INTERNATIONAL

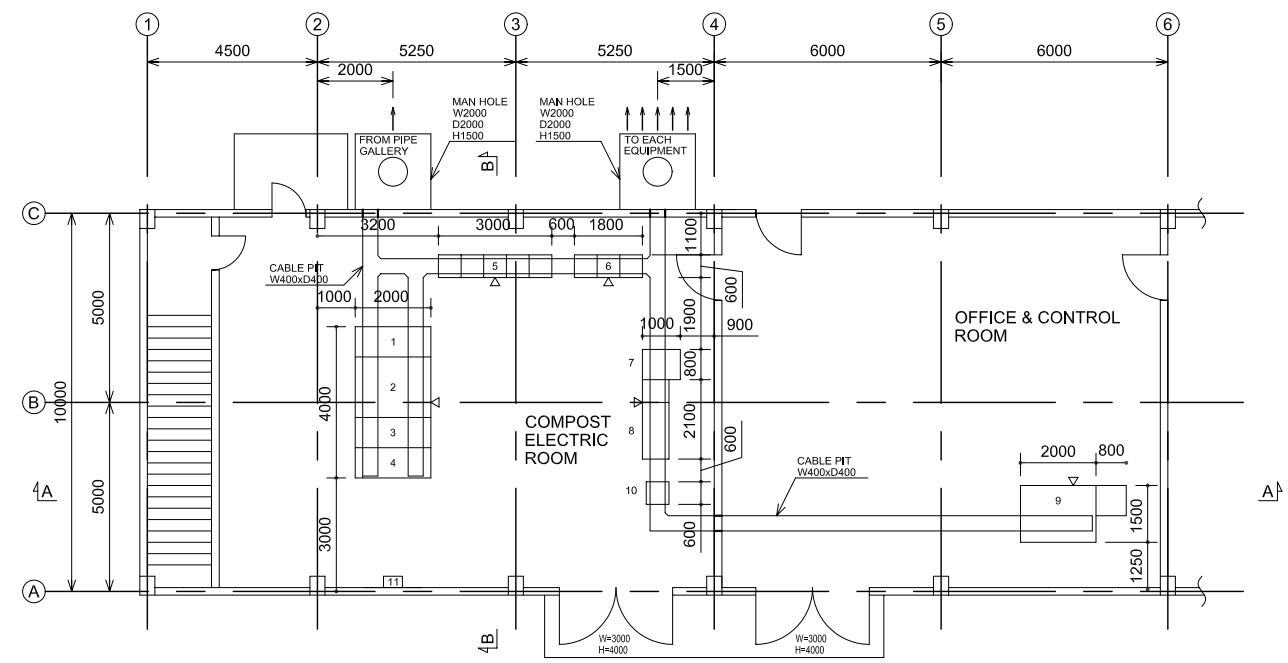
DESIGNED
KOMIYA NOBUO

CHECKED
KONDO MASAMI

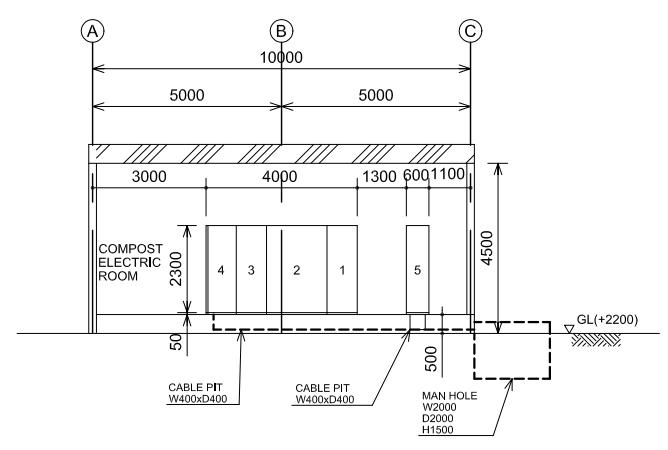
DATE : JUNE 2001 DWG. No. PE - WWTP - 524



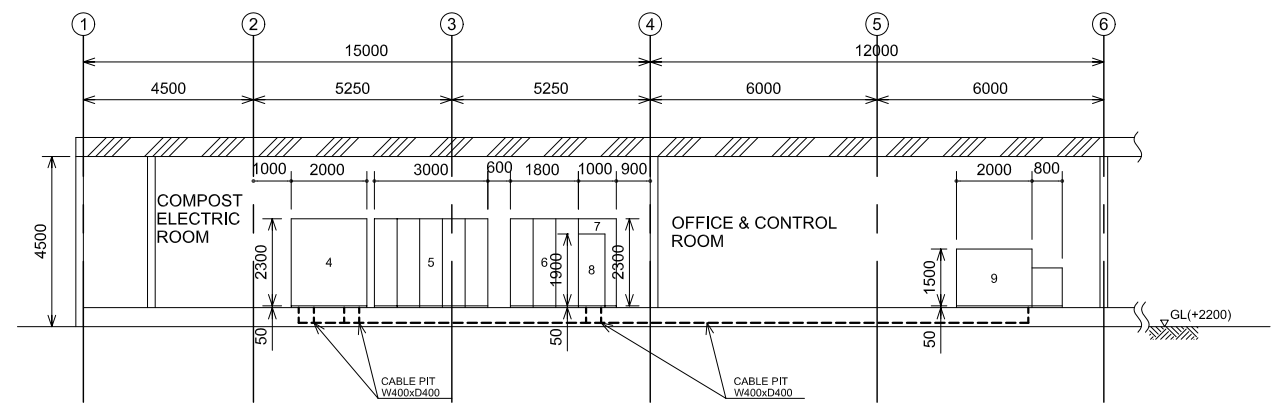
KEY PLAN



PLAN



B-B SECTION



A-A SECTION

No.	PANEL TYPE	SIZE	WEIGHT(Kg)
1	3.3KV INCOMING PANEL	W800 x D2000 x H2300	1200
2	750kVA TR PANEL	W1600 x D2000 x H2300	3100
3	LOW VOLTAGE SWG	W800 x D2000 x H2300	1000
4	AC DISTRIBUTION PANEL	W800 x D2000 x H2300	1000
5	CC-700-1	W600 x D600 x H2300 x 5UNITS	1000
6	Ry PANEL-1	W600 x D600 x H2300 x 3UNITS	450
7	DC POWER SUPPLY SYSTEM	W800 x D1000 x H2300	800
8	UPS	W2100 x D700 x H1900	1500
9	SUPERVISORY PANEL	W2000 x D1500 x H1500	550
10	INTER FACE PANEL	W600 x D600 x H2300	400
11	OUTDOOR LIGHTING BOARD		

NO.	DATE	DESCRIPTIONS	BY	APRO.
-----	------	--------------	----	-------

REVISIONS

PROJECT MANAGEMENT UNIT FOR
HO CHI MINH CITY
WATER ENVIRONMENT IMPROVEMENT

THE DETAILED DESIGN ON HO CHI MINH CITY
WATER ENVIRONMENT IMPROVEMENT PROJECT
IN THE SOCIALIST REPUBLIC OF VIET NAM

PACKAGE E
WASTEWATER TREATMENT PLANT

GENERAL ARRANGEMENT FOR
COMPOST CONTROL BUILDING
ELECTRIC ROOM

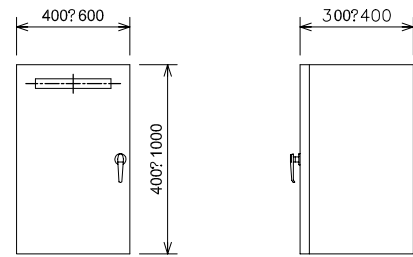
SCALE : 1/60

JICA JAPAN INTERNATIONAL COOPERATION
AGENCY (JICA)

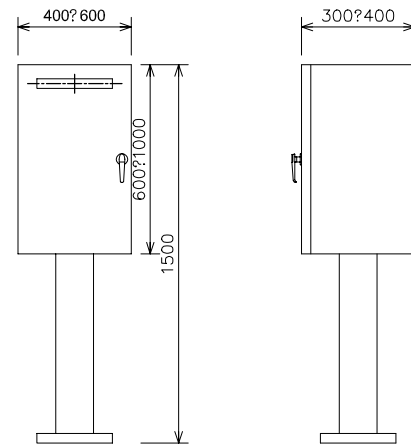
PACIFIC CONSULTANTS INTERNATIONAL

DESIGNED KOMIYA NOBUO	CHECKED KONDO MASAMI
--------------------------	-------------------------

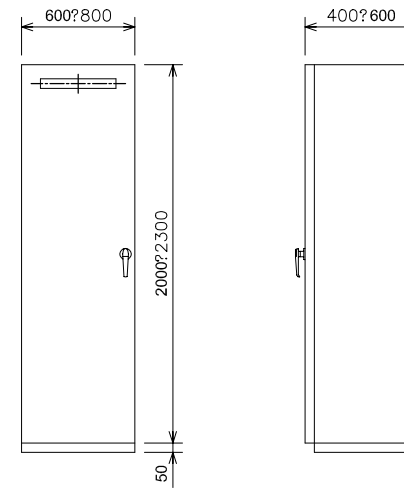
DATE : JUNE 2001 DWG. No. PE - WWTP - 525



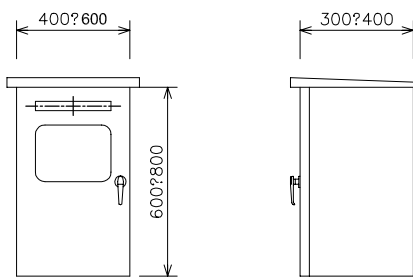
INDOOR WALL MOUNT TYPE



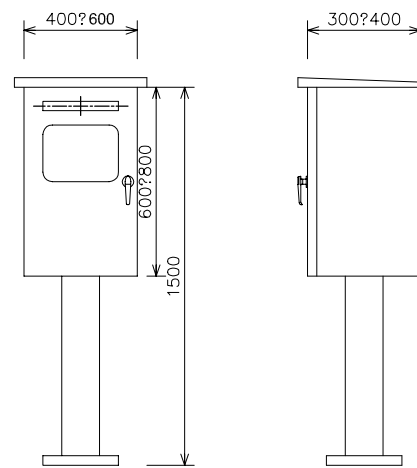
INDOOR STAND TYPE



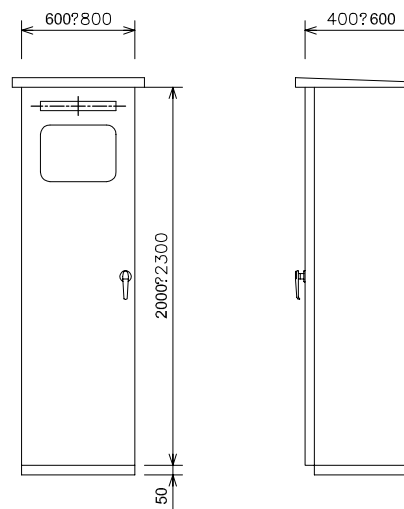
INDOOR SELF-STANDING TYPE



OUTDOOR WALL MOUNT TYPE



OUTDOOR STAND TYPE



OUTDOOR SELF-STANDING TYPE

NO.	DATE	DESCRIPTIONS	BY	APRO.
-----	------	--------------	----	-------

REVISIONS

PROJECT MANAGEMENT UNIT FOR
HO CHI MINH CITY
WATER ENVIRONMENT IMPROVEMENT

THE DETAILED DESIGN ON HO CHI MINH CITY
WATER ENVIRONMENT IMPROVEMENT PROJECT
IN THE SOCIALIST REPUBLIC OF VIET NAM

PACKAGE E
WASTEWATER TREATMENT PLANT

OUTLINE DIMENSION OF
LOCAL CONTROL PANELS

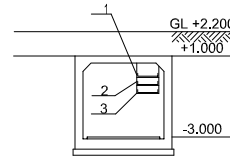
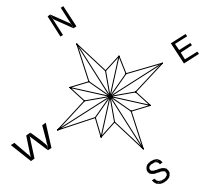
SCALE : 1/20

JICA JAPAN INTERNATIONAL COOPERATION
AGENCY (JICA)

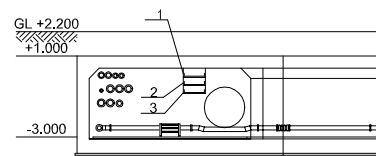
PACIFIC CONSULTANTS INTERNATIONAL

DESIGNED KOMIYA NOBUO	CHECKED KONDO MASAMI
--------------------------	-------------------------

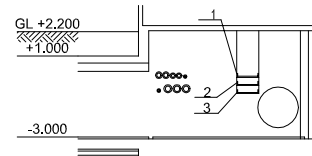
DATE : JUNE 2001 DWG. No. PE - WWTP - 526



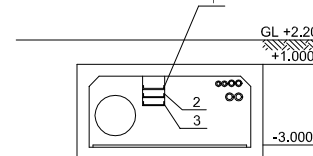
SECTION A-A



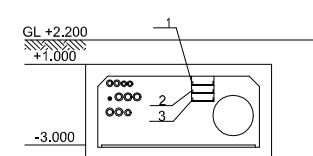
SECTION B-B



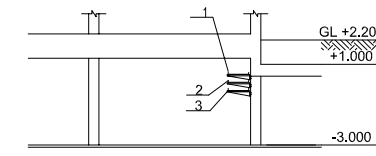
SECTION C-C



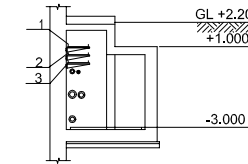
SECTION D-D



SECTION E-E

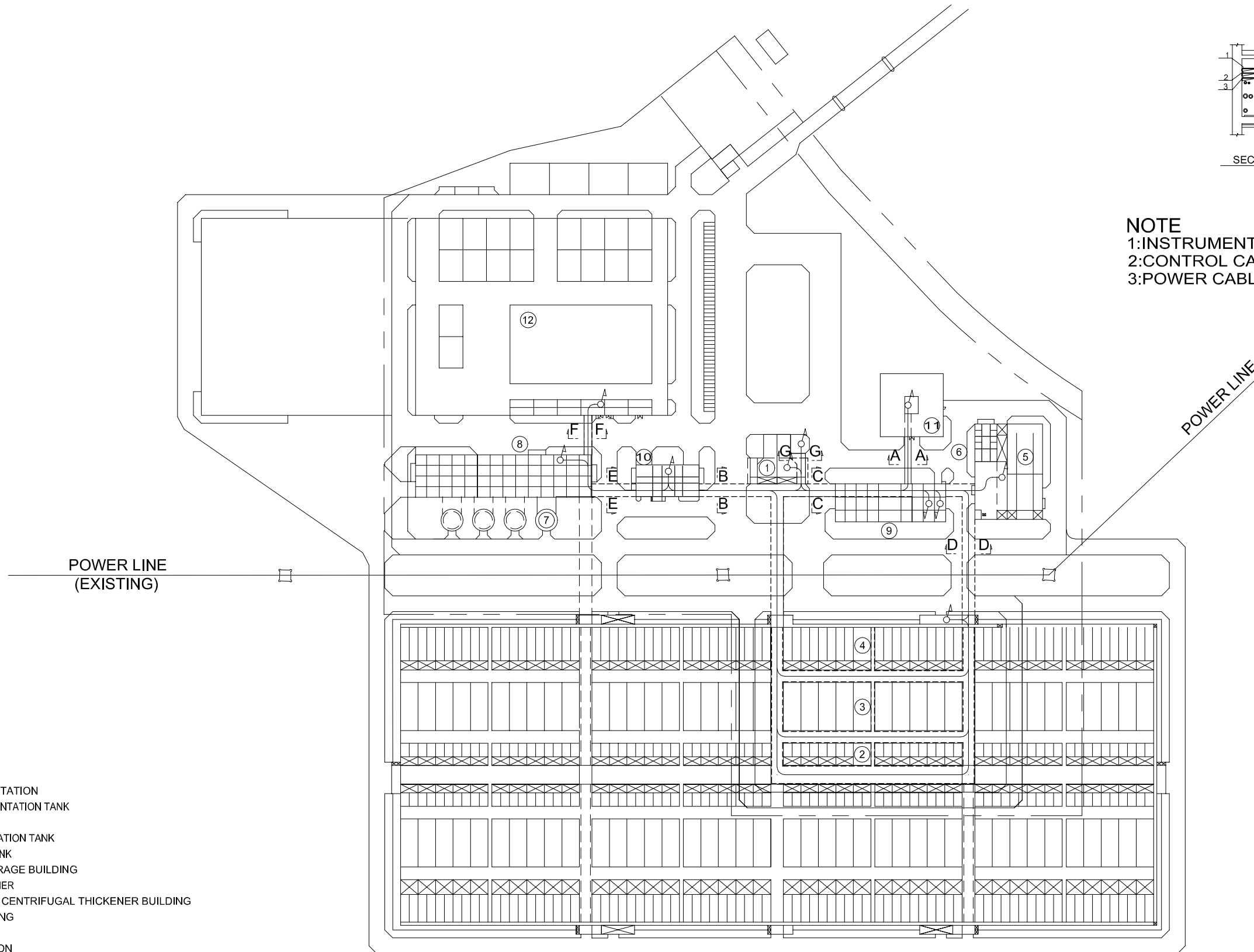


SECTION F-F



SECTION G-G

NOTE
 1: INSTRUMENTATION CABLE
 2: CONTROL CABLE
 3: POWER CABLE

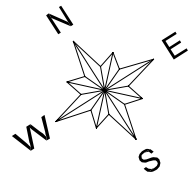


LEGEND

- ① LIFT PUMPING STATION
- ② PRIMARY SEDIMENTATION TANK
- ③ AERATION TANK
- ④ FINAL SEDIMENTATION TANK
- ⑤ DISINFECTION TANK
- ⑥ CHLORINE STORAGE BUILDING
- ⑦ GRAVITY THICKENER
- ⑧ DEWATERING & CENTRIFUGAL THICKENER BUILDING
- ⑨ BLOWER BUILDING
- ⑩ MAIN BUILDING
- ⑪ MAIN SUBSTATION
- ⑫ COMPOST PLANT FACILITY

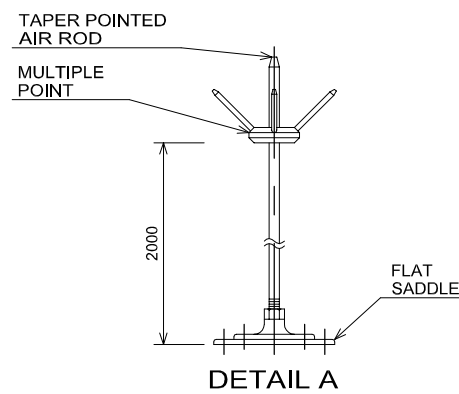
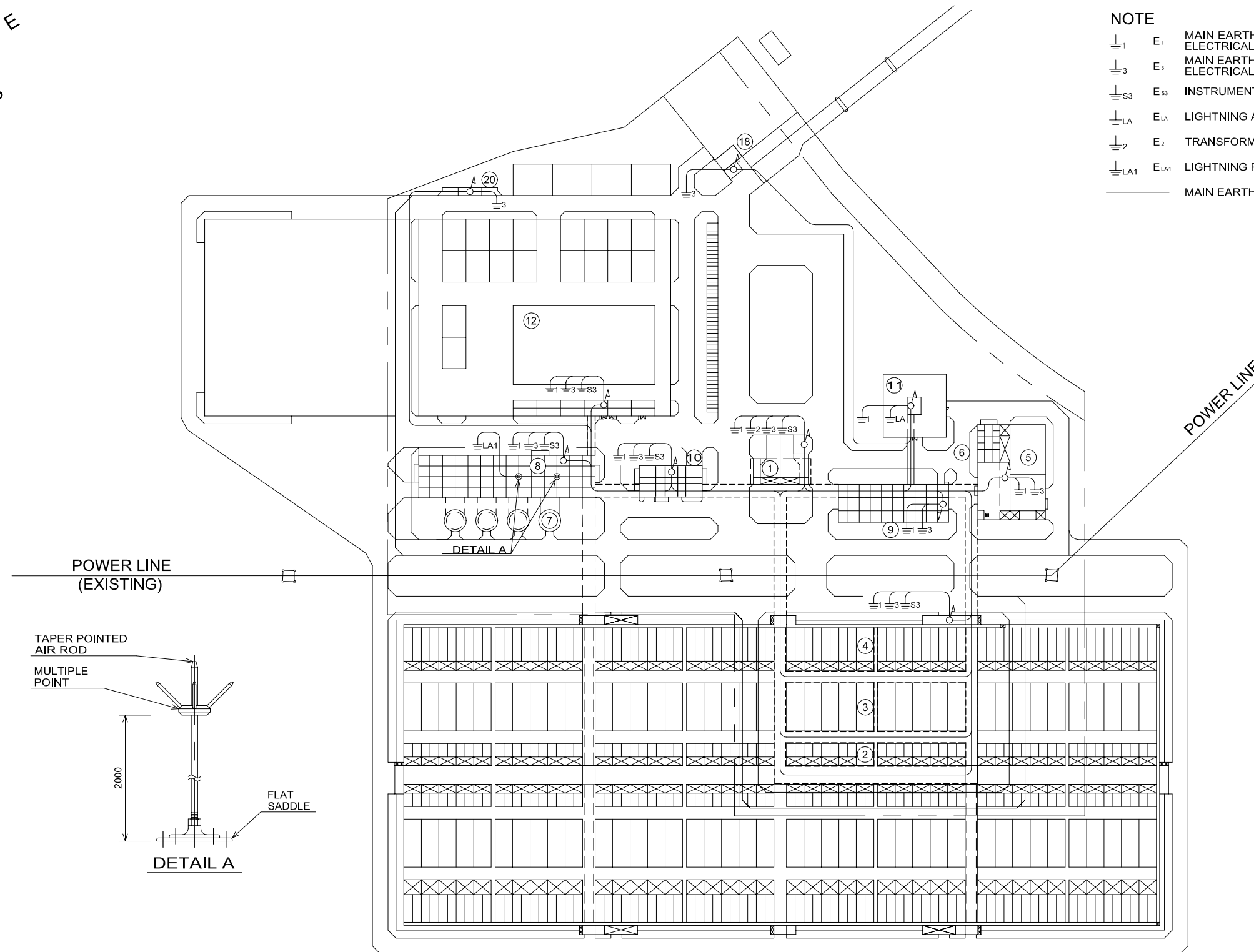
0 50 100 150 200m

NO.	DATE	DESCRIPTIONS	BY	APRO.
REVISIONS				
PROJECT MANAGEMENT UNIT FOR HO CHI MINH CITY WATER ENVIRONMENT IMPROVEMENT				
THE DETAILED DESIGN ON HO CHI MINH CITY WATER ENVIRONMENT IMPROVEMENT PROJECT IN THE SOCIALIST REPUBLIC OF VIET NAM				
PACKAGE E WASTEWATER TREATMENT PLANT				
GENERAL WIRING PLAN				
SCALE : 1/1500				
JAPAN INTERNATIONAL COOPERATION AGENCY (JICA)				
PACIFIC CONSULTANTS INTERNATIONAL				
DESIGNED KOMIYA NOBUO		CHECKED KONDO MASAMI		
DATE : JUNE 2001		DWG. No. PE - WWTP - 531		



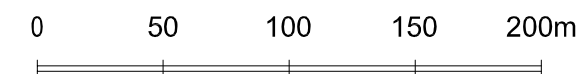
NOTE

- ⏚₁ E₁ : MAIN EARTHING FOR HIGH VOLTAGE ELECTRICAL EQUIPMENT
- ⏚₃ E₃ : MAIN EARTHING FOR LOW VOLTAGE ELECTRICAL EQUIPMENT
- ⏚_{S3} E_{S3} : INSTRUMENTATION EARTHING
- ⏚_{LA} E_{LA} : LIGHTNING ARRESTER EARTHING
- ⏚₂ E₂ : TRANSFORMER NEUTRAL EARTHING
- ⏚_{LA1} E_{LA1} : LIGHTNING PROTECTOR EARTHING
- : MAIN EARTHING CONDUCTOR ROUTE



LEGEND

- ① LIFT PUMPING STATION
- ② PRIMARY SEDIMENTATION TANK
- ③ AERATION TANK
- ④ FINAL SEDIMENTATION TANK
- ⑤ DISINFECTION TANK
- ⑥ CHLORINE STORAGE BUILDING
- ⑦ GRAVITY THICKENER
- ⑧ DEWATERING & CENTRIFUGAL THICKENER BUILDING
- ⑨ BLOWER BUILDING
- ⑩ MAIN BUILDING
- ⑪ MAIN SUBSTATION
- ⑫ COMPOST PLANT FACILITY
- ⑬ GUARD HOUSE
- ⑭ TRUCK SCALE



NO.	DATE	DESCRIPTIONS	BY	APRO.

REVISIONS

PROJECT MANAGEMENT UNIT FOR
HO CHI MINH CITY
WATER ENVIRONMENT IMPROVEMENT

THE DETAILED DESIGN ON HO CHI MINH CITY
WATER ENVIRONMENT IMPROVEMENT PROJECT
IN THE SOCIALIST REPUBLIC OF VIET NAM

PACKAGE E
WASTEWATER TREATMENT PLANT

GENERAL WIRING PLAN
FOR
EARTHING SYSTEM

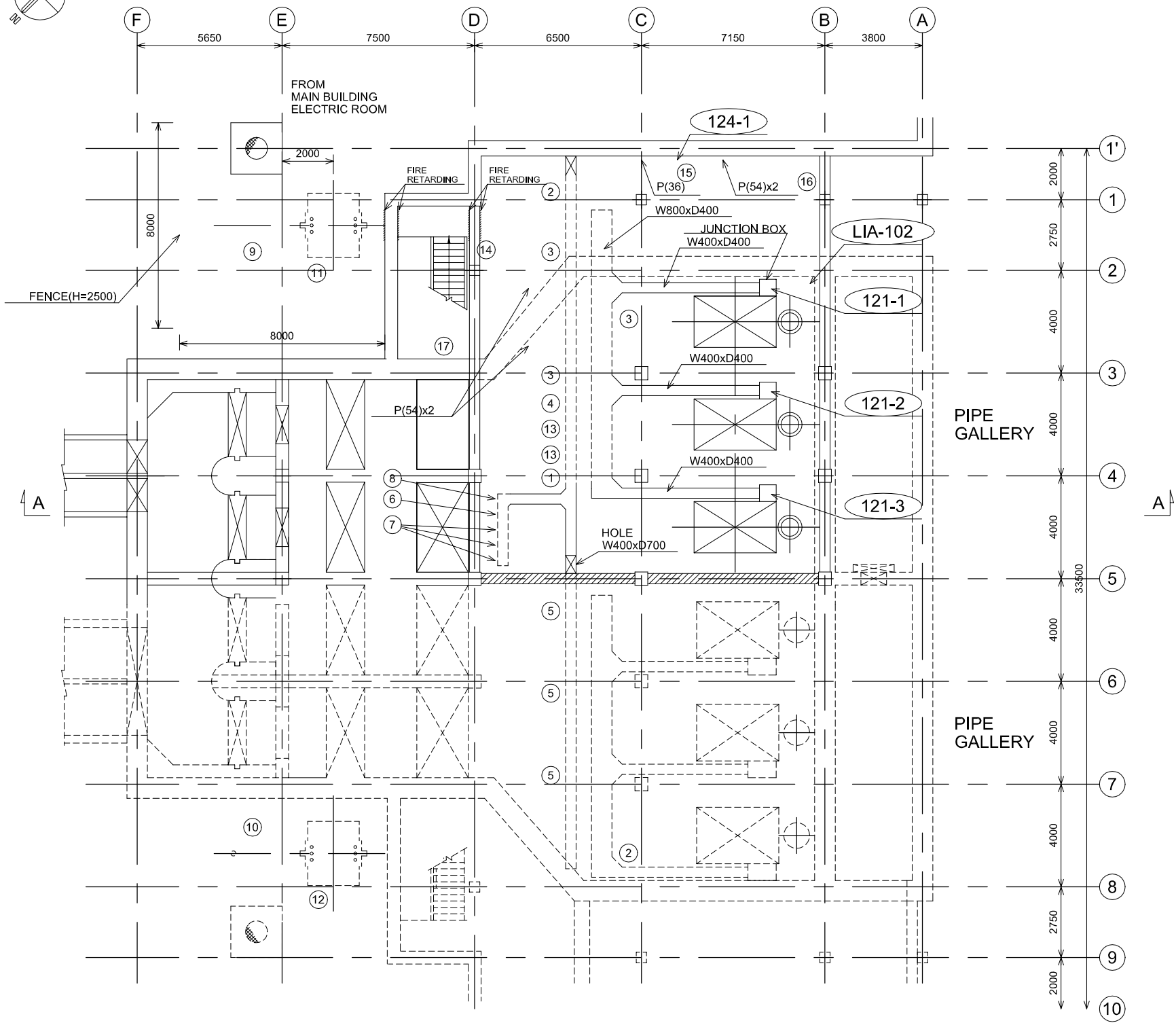
SCALE : 1/1500

JAPAN INTERNATIONAL COOPERATION AGENCY (JICA)

PACIFIC CONSULTANTS INTERNATIONAL

DESIGNED KOMIYA NOBUO	CHECKED KONDO MASAMI
--------------------------	-------------------------

DATE : JUNE 2001 DWG. No. PE - WWTP - 532



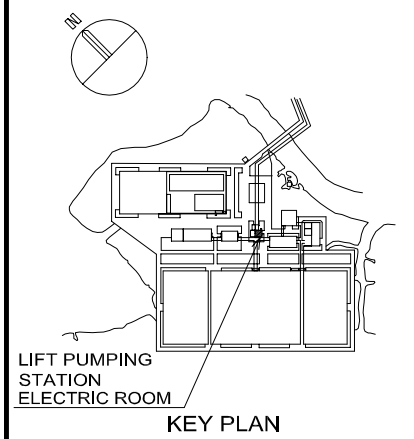
PLAN

No.	PANEL TYPE & SIZE
1	DC POWER SUPPLY SYSTEM W800xD1000xH2300
2	380V INCOMING PANEL W1200xD2000xH2300x2UNITS
3	LIFT PUMP(1) STARTING PANEL W2400xD2000xH2300x3UNITS
4	AC DISTRIBUTION PANEL W1000xD2000xH2300
5	LIFT PUMP(2) STARTING PANEL(PHASE-2) W3200xD2000xH2300x3UNITS
6	COMMON RELAY PANEL W600xD600xH2300
7	CC-100-1 W600xD600xH2300x3UNITS
8	INTERFACE PANEL W600xD600xH2300
9	TR PRIMARY PANEL W1200xD2000xH2300
10	TR PRIMARY PANEL(PHASE-2) W1200xD2000xH2300
11	1500KVA TRANSFORMER W3290xD2200xH2700
12	2500kVA TRANSFORMER W3400xD2600xH3100
13	CAPACITOR PANEL W1000xD600xH2300x2UNITS
14	OUTDOOR LIGHTING DISTRIBUTION BOX
15	HOIST SWITCH BOX
16	LPS-1 PANEL (ARCHITECTURE WORK)
17	LPS-2 PANEL (B1F) (ARCHITECTURE WORK)

MOTOR No.	NAME OF EQUIPMENT
121-1	LIFT PUMP (1-1)
121-2	LIFT PUMP (1-2)
121-3	LIFT PUMP (1-3)
124-1	HOIST(124)

ITEM No.	INSTRUMENTATION EQUIPMENT
LIA-102	LEVEL METER

NOTE
:PHASE-2



KEY PLAN

NO.	DATE	DESCRIPTIONS	BY	APRO.

REVISIONS

PROJECT MANAGEMENT UNIT FOR
HO CHI MINH CITY
WATER ENVIRONMENT IMPROVEMENT

THE DETAILED DESIGN ON HO CHI MINH CITY
WATER ENVIRONMENT IMPROVEMENT PROJECT
IN THE SOCIALIST REPUBLIC OF VIET NAM

PACKAGE E
WASTEWATER TREATMENT PLANT

WIRING & PIPING PLAN FOR
LIFT PUMPING PLANT
(1/2)

SCALE : 1/100

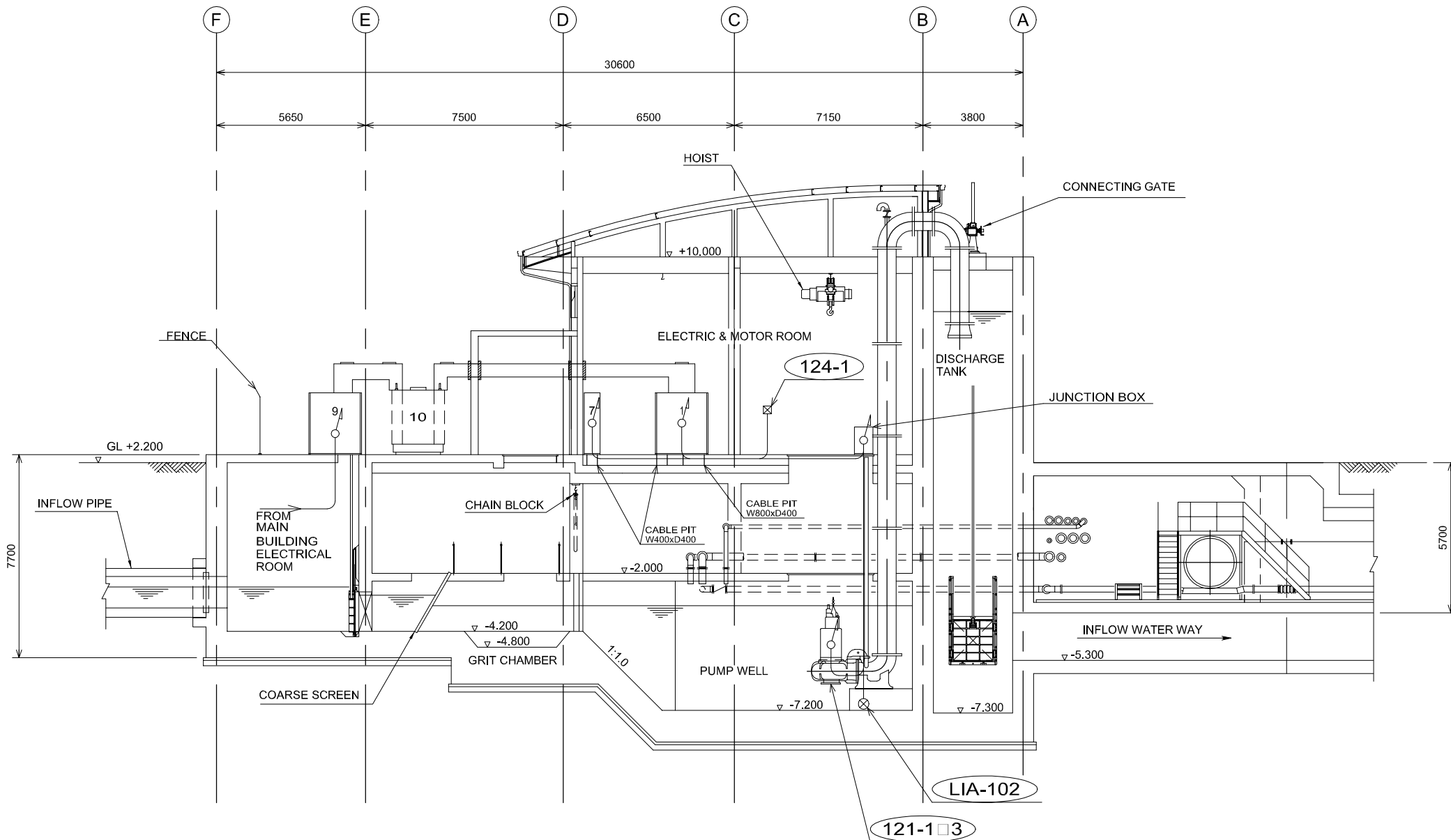
JICA JAPAN INTERNATIONAL COOPERATION AGENCY (JICA)

PACIFIC CONSULTANTS INTERNATIONAL

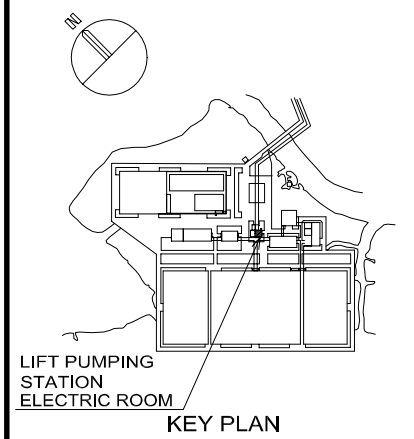
DESIGNED
KOMIYA NOBUO

CHECKED
KONDO MASAMI

DATE : JUNE 2001 DWG. No. PE - WWTP - 533-01



A-A SECTION



LIFT PUMPING STATION ELECTRIC ROOM KEY PLAN

NO.	DATE	DESCRIPTIONS	BY	APRO.

REVISIONS

PROJECT MANAGEMENT UNIT FOR
HO CHI MINH CITY
WATER ENVIRONMENT IMPROVEMENT

THE DETAILED DESIGN ON HO CHI MINH CITY
WATER ENVIRONMENT IMPROVEMENT PROJECT
IN THE SOCIALIST REPUBLIC OF VIET NAM

PACKAGE E
WASTEWATER TREATMENT PLANT

WIRING & PIPING PLAN FOR
LIFT PUMPING STATION
(2/2)

SCALE : 1/100

JICA JAPAN INTERNATIONAL COOPERATION AGENCY (JICA)

PACIFIC CONSULTANTS INTERNATIONAL

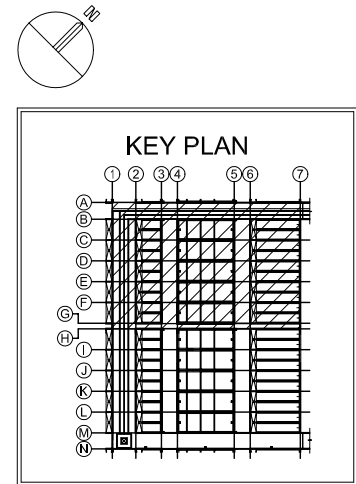
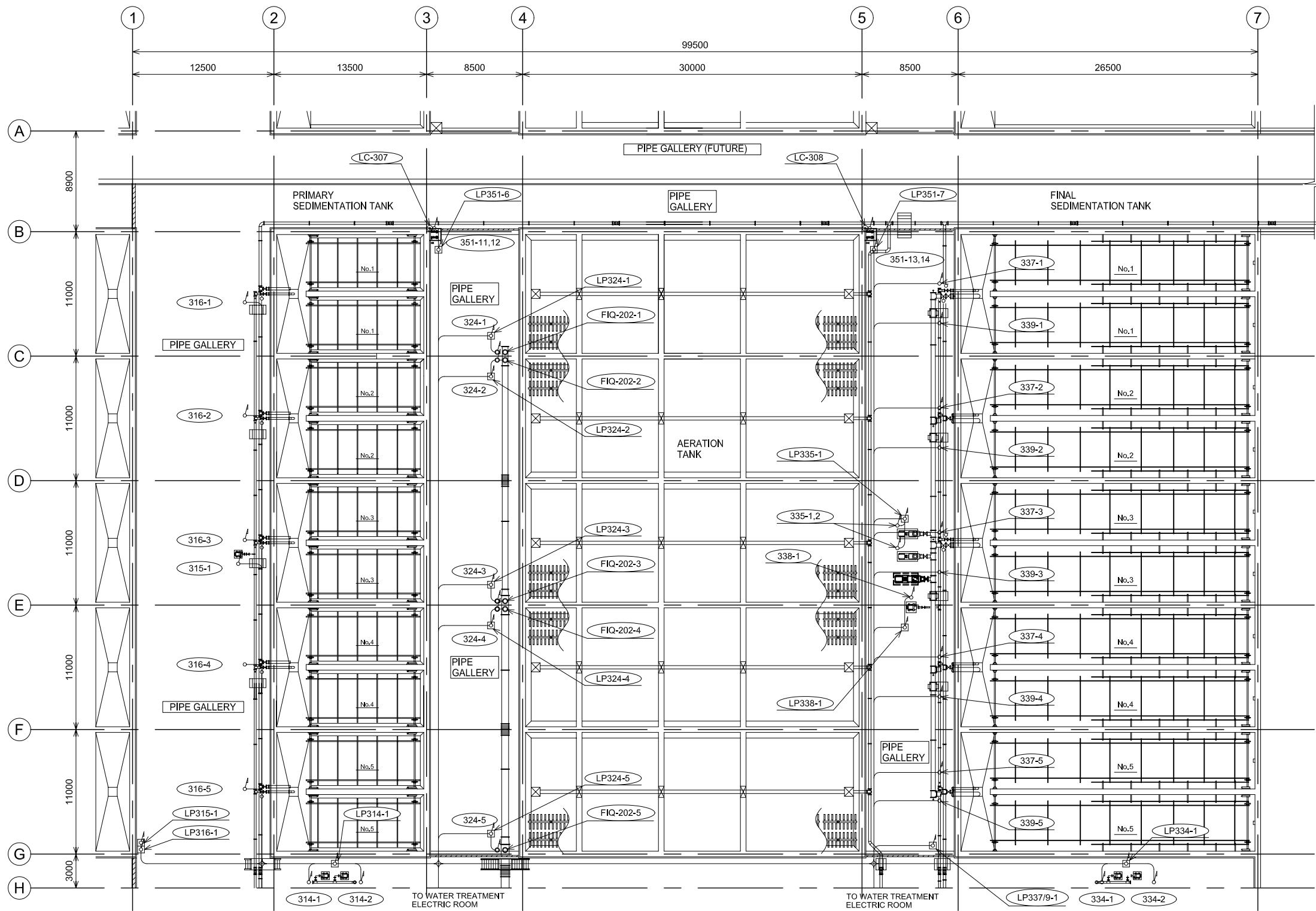
DESIGNED KOMIYA NOBUO CHECKED KONDO MASAMI

DATE : JUNE 2001 DWG. No. PE - WWTP - 533-02

No.	PANEL TYPE & SIZE
1	DC POWER SUPPLY SYSTEM W800 x D1000 x H2300
7	CC-100-1 W600 x D600 x H2300 x 3UNITS
9	TR PRIMARY PANEL W1200 x D2000 x H2300 x 2UNITS
10	1500kVA TRANSFORMER W3290 x D2200 x H2700

MOTOR No.	NAME OF EQUIPMENT
121-1	LIFT PUMP (1-1)
121-2	LIFT PUMP (1-2)
121-3	LIFT PUMP (1-3)
124-1	HOIST

ITEM No.	INSTRUMENTATION EQUIPMENT
LIA-102	PUMP WELL WATER LEVEL



NO.	DATE	DESCRIPTIONS	BY	APRO.

REVISIONS

PROJECT MANAGEMENT UNIT FOR
HO CHI MINH CITY
WATER ENVIRONMENT IMPROVEMENT

THE DETAILED DESIGN ON HO CHI MINH CITY
WATER ENVIRONMENT IMPROVEMENT PROJECT
IN THE SOCIALIST REPUBLIC OF VIET NAM

PACKAGE E
WASTEWATER TREATMENT PLANT

WIRING & PIPING PLAN
FOR
WASTEWATER TREATMENT PLANT
(1/8)

SCALE : 1/200

JICA JAPAN INTERNATIONAL COOPERATION
AGENCY (JICA)

PACIFIC CONSULTANTS INTERNATIONAL

DESIGNED
KOMIYA NOBUO

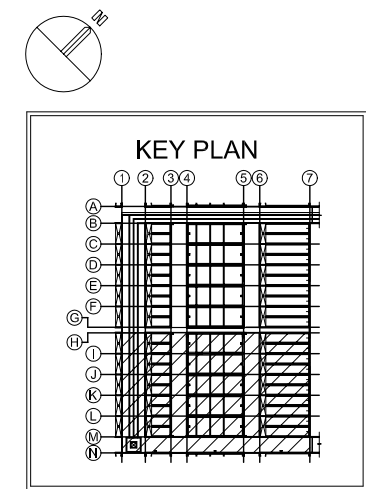
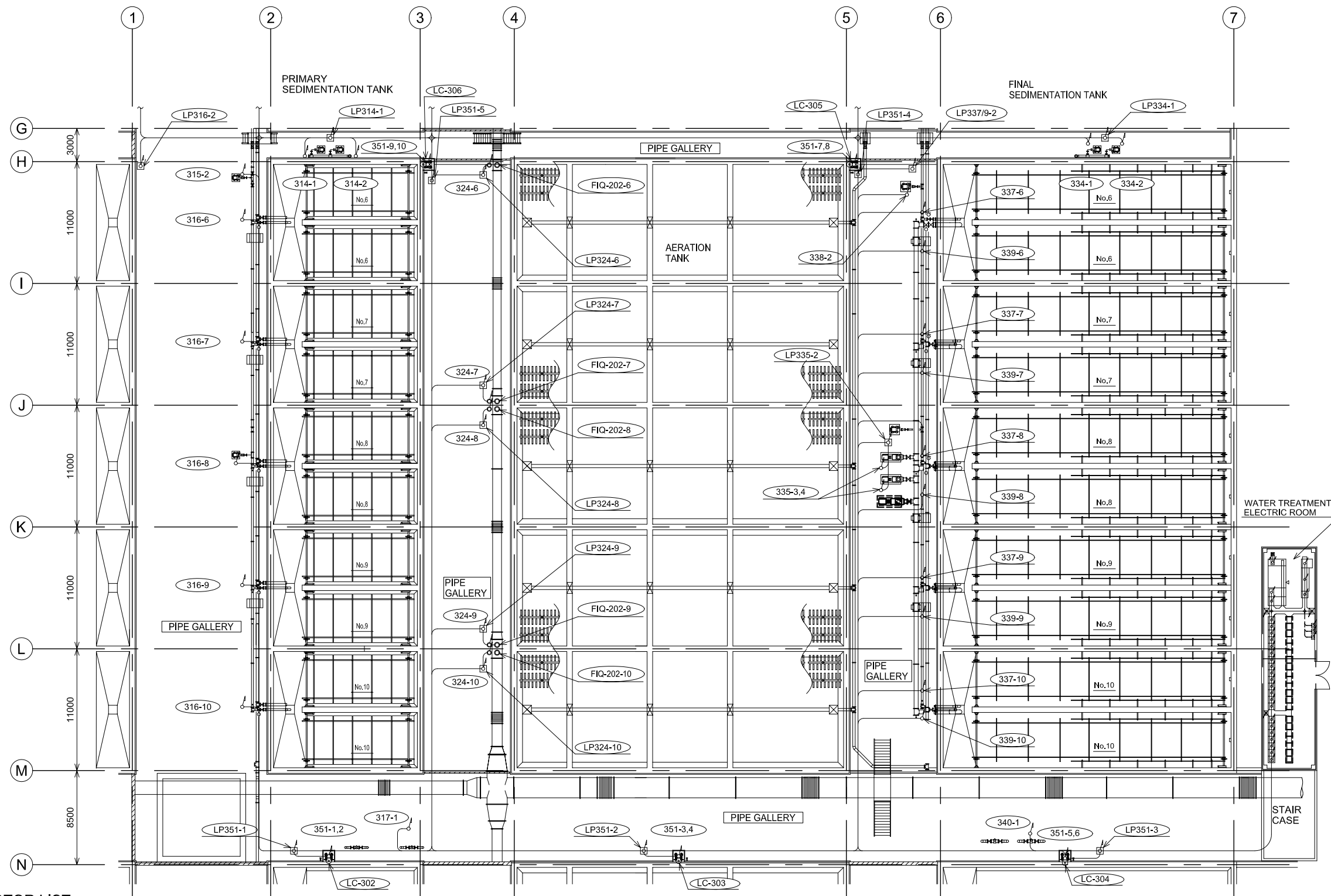
CHECKED
KONDO MASAMI

DATE : JUNE 2001 DWG. No. PE - WWTP - 534-01

MOTOR LIST

MOTOR No.	NAME OF EQUIPMENT	MOTOR No.	NAME OF EQUIPMENT	MOTOR No.	NAME OF EQUIPMENT	MOTOR No.	NAME OF EQUIPMENT
	PRIMARY SEDIMENTATION TANK						
312-1	SLUDGE SCRAPER	316-8	RAW SLUDGE VALVE	332-5	SLUDGE SCRAPER	338-1	EXCESS SLUDGE PUMP
312-2	SLUDGE SCRAPER	316-9	RAW SLUDGE VALVE	332-6	SLUDGE SCRAPER	338-2	EXCESS SLUDGE PUMP
312-3	SLUDGE SCRAPER	316-10	RAW SLUDGE VALVE	332-7	SLUDGE SCRAPER	339-1	EXCESS SLUDGE VALVE
312-4	SLUDGE SCRAPER	317-1	COMMINUTER	332-8	SLUDGE SCRAPER	339-2	EXCESS SLUDGE VALVE
312-5	SLUDGE SCRAPER			332-9	SLUDGE SCRAPER	339-3	EXCESS SLUDGE VALVE
312-6	SLUDGE SCRAPER		AERATION TANK	332-10	SLUDGE SCRAPER	339-4	EXCESS SLUDGE VALVE
312-7	SLUDGE SCRAPER	324-1	AIR FLOW CONTROL VALVE	334-1	SCUM PUMP	339-5	EXCESS SLUDGE VALVE
312-8	SLUDGE SCRAPER	324-2	AIR FLOW CONTROL VALVE	334-2	SCUM PUMP	339-6	EXCESS SLUDGE VALVE
312-9	SLUDGE SCRAPER	324-3	AIR FLOW CONTROL VALVE	335-1	RETURN SLUDGE PUMP (25%)	339-7	EXCESS SLUDGE VALVE
312-10	SLUDGE SCRAPER	324-4	AIR FLOW CONTROL VALVE	335-2	RETURN SLUDGE PUMP (25%)	339-8	EXCESS SLUDGE VALVE
314-1	SCUM PUMP	324-5	AIR FLOW CONTROL VALVE	335-3	RETURN SLUDGE PUMP (25%)	339-9	EXCESS SLUDGE VALVE
314-2	SCUM PUMP	324-6	AIR FLOW CONTROL VALVE	335-4	RETURN SLUDGE PUMP (25%)	339-10	EXCESS SLUDGE VALVE
315-1	RAW SLUDGE PUMP	324-7	AIR FLOW CONTROL VALVE	337-1	RETURN SLUDGE VALVE	340-1	COMMINUTER
315-2	RAW SLUDGE PUMP	324-8	AIR FLOW CONTROL VALVE	337-2	RETURN SLUDGE VALVE	351-1	FLOOR DRAINAGE PUMP
316-1	RAW SLUDGE VALVE	324-9	AIR FLOW CONTROL VALVE	337-3	RETURN SLUDGE VALVE	351-2	FLOOR DRAINAGE PUMP
316-2	RAW SLUDGE VALVE	324-10	AIR FLOW CONTROL VALVE	337-4	RETURN SLUDGE VALVE	351-3	FLOOR DRAINAGE PUMP
316-3	RAW SLUDGE VALVE			337-5	RETURN SLUDGE VALVE	351-4	FLOOR DRAINAGE PUMP
316-4	RAW SLUDGE VALVE		FINAL SEDIMENTATION TANK	337-6	RETURN SLUDGE VALVE	351-5	FLOOR DRAINAGE PUMP
316-5	RAW SLUDGE VALVE	332-1	SLUDGE SCRAPER	337-7	RETURN SLUDGE VALVE	351-6	FLOOR DRAINAGE PUMP
316-6	RAW SLUDGE VALVE	332-2	SLUDGE SCRAPER	337-8	RETURN SLUDGE VALVE	351-7	FLOOR DRAINAGE PUMP
316-7	RAW SLUDGE VALVE	332-3	SLUDGE SCRAPER	337-9	RETURN SLUDGE VALVE	351-8	FLOOR DRAINAGE PUMP
		332-4	SLUDGE SCRAPER	337-10	RETURN SLUDGE VALVE	351-9	FLOOR DRAINAGE PUMP

LOWER PLAN (1/2)



MOTOR LIST

MOTOR No.	NAME OF EQUIPMENT	MOTOR No.	NAME OF EQUIPMENT	MOTOR No.	NAME OF EQUIPMENT	MOTOR No.	NAME OF EQUIPMENT	MOTOR No.	NAME OF EQUIPMENT
312-1	PRIMARY SEDIMENTATION TANK	316-8	RAW SLUDGE VALVE	332-5	SLUDGE SCRAPER	338-1	EXCESS SLUDGE PUMP	351-10	FLOOR DRAINAGE PUMP
312-2	SLUDGE SCRAPER	316-9	RAW SLUDGE VALVE	332-6	SLUDGE SCRAPER	338-2	EXCESS SLUDGE PUMP	351-11	FLOOR DRAINAGE PUMP
312-3	SLUDGE SCRAPER	316-10	RAW SLUDGE VALVE	332-7	SLUDGE SCRAPER	339-1	EXCESS SLUDGE VALVE	351-12	FLOOR DRAINAGE PUMP
312-4	SLUDGE SCRAPER	317-1	COMMINUTER	332-8	SLUDGE SCRAPER	339-2	EXCESS SLUDGE VALVE	351-13	FLOOR DRAINAGE PUMP
312-5	SLUDGE SCRAPER			332-9	SLUDGE SCRAPER	339-3	EXCESS SLUDGE VALVE	351-14	FLOOR DRAINAGE PUMP
312-6	SLUDGE SCRAPER	324-1	AERATION TANK	332-10	SLUDGE SCRAPER	339-4	EXCESS SLUDGE VALVE	ITEM No.	INSTRUMENTATION EQUIPMENT
312-7	SLUDGE SCRAPER	324-2	AIR FLOW CONTROL VALVE	334-1	SCUM PUMP	339-5	EXCESS SLUDGE VALVE	FIQ-202-10	AERATION TANK AIR FLOW METER
312-8	SLUDGE SCRAPER	324-3	AIR FLOW CONTROL VALVE	334-2	SCUM PUMP	339-6	EXCESS SLUDGE VALVE	FIQ-301	RAW SLUDGE FLOW METER
312-9	SLUDGE SCRAPER	324-4	AIR FLOW CONTROL VALVE	335-1	RETURN SLUDGE PUMP (25%)	339-7	EXCESS SLUDGE VALVE	FRQ-302-1.2	RETURN SLUDGE FLOW METER
312-10	SLUDGE SCRAPER	324-5	AIR FLOW CONTROL VALVE	335-2	RETURN SLUDGE PUMP (25%)	339-8	EXCESS SLUDGE VALVE	FIQ-303	EXCESS SLUDGE FLOW METER
314-1	SCUM PUMP	324-6	AIR FLOW CONTROL VALVE	335-3	RETURN SLUDGE PUMP (25%)	339-9	EXCESS SLUDGE VALVE	DIA-301	RAW SLUDGE DENSITY METER
314-2	SCUM PUMP	324-7	AIR FLOW CONTROL VALVE	335-4	RETURN SLUDGE PUMP (25%)	339-10	EXCESS SLUDGE VALVE	DIA-302-1.2	RETURN SLUDGE DENSITY METER
315-1	RAW SLUDGE PUMP	324-8	AIR FLOW CONTROL VALVE	337-1	RETURN SLUDGE VALVE	340-1	COMMINUTER	LC-301-1.2	SCUM TANK LEVEL SWITCH
315-2	RAW SLUDGE PUMP	324-9	AIR FLOW CONTROL VALVE	337-2	RETURN SLUDGE VALVE	351-1	FLOOR DRAINAGE PUMP	LC-302-308	FLOOR DRAINAGE PIT LEVEL SWITCH
316-1	RAW SLUDGE VALVE	324-10	AIR FLOW CONTROL VALVE	337-3	RETURN SLUDGE VALVE	351-2	FLOOR DRAINAGE PUMP		
316-2	RAW SLUDGE VALVE			337-4	RETURN SLUDGE VALVE	351-3	FLOOR DRAINAGE PUMP		
316-3	RAW SLUDGE VALVE			337-5	RETURN SLUDGE VALVE	351-4	FLOOR DRAINAGE PUMP		
316-4	RAW SLUDGE VALVE			337-6	RETURN SLUDGE VALVE	351-5	FLOOR DRAINAGE PUMP		
316-5	RAW SLUDGE VALVE			337-7	RETURN SLUDGE VALVE	351-6	FLOOR DRAINAGE PUMP		
316-6	RAW SLUDGE VALVE			337-8	RETURN SLUDGE VALVE	351-7	FLOOR DRAINAGE PUMP		
316-7	RAW SLUDGE VALVE			337-9	RETURN SLUDGE VALVE	351-8	FLOOR DRAINAGE PUMP		
				337-10	RETURN SLUDGE VALVE	351-9	FLOOR DRAINAGE PUMP		

LOWER PLAN (2/2)

NO.	DATE	DESCRIPTIONS	BY	APRO.
REVISIONS				
PROJECT MANAGEMENT UNIT FOR HO CHI MINH CITY WATER ENVIRONMENT IMPROVEMENT				
THE DETAILED DESIGN ON HO CHI MINH CITY WATER ENVIRONMENT IMPROVEMENT PROJECT IN THE SOCIALIST REPUBLIC OF VIET NAM				
PACKAGE E WASTEWATER TREATMENT PLANT				
WIRING & PIPING PLAN FOR WASTEWATER TREATMENT PLANT (2/8)				
SCALE : 1/200				
JAPAN INTERNATIONAL COOPERATION AGENCY (JICA)				
PACIFIC CONSULTANTS INTERNATIONAL				
DESIGNED KOMIYA NOBUO		CHECKED KONDO MASAMI		
DATE : JUNE 2001		DWG. No. PE - WWTP - 534-02		