

GHI CHÚ:
- BÊ TÔNG LỚT ĐÁ 40x60, MÁC 100
- BÊ TÔNG ĐÁ 10x20, MÁC 300
- CỐT THÉP $R_a=2000$ Kg/cm²

NOTE:
- LEAN CONCRETE STONE 40x60, GRADE 100
- CONCRETE STONE 10x20, GRADE 300
- REINFORCEMENT $R_a=2000$ Kg/cm²

| NO. | DATE | DESCRIPTIONS | BY | APRO. |
|-----|------|--------------|----|-------|
| | | | | |
| | | | | |
| | | | | |
| | | | | |

REVISIONS

PROJECT MANAGEMENT UNIT FOR
HO CHI MINH CITY
WATER ENVIRONMENT IMPROVEMENT

THE DETAILED DESIGN STUDY ON HO CHI MINH CITY
WATER ENVIRONMENT IMPROVEMENT PROJECT
IN THE SOCIALIST REPUBLIC OF VIET NAM

PACKAGE E
WASTEWATER TREATMENT PLANT

STAIRCASE B
DETAIL OF 2nd FLOOR & ROOF BEAMS

SCALE : N.T.S.

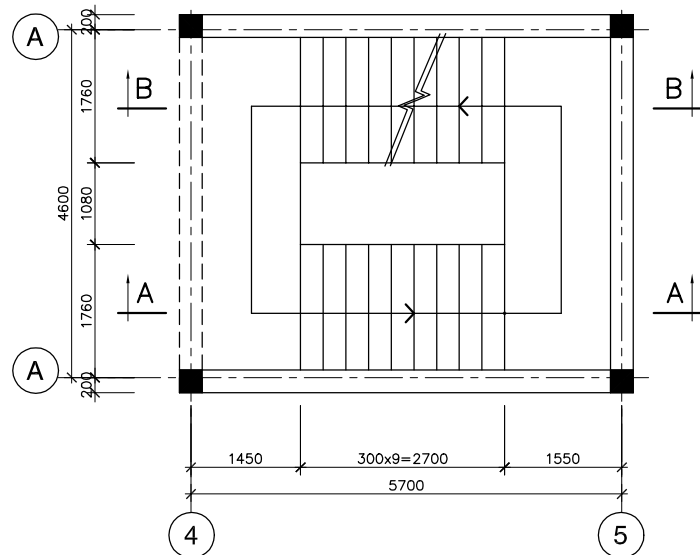
JICA JAPAN INTERNATIONAL COOPERATION
AGENCY (JICA)

PACIFIC CONSULTANTS INTERNATIONAL

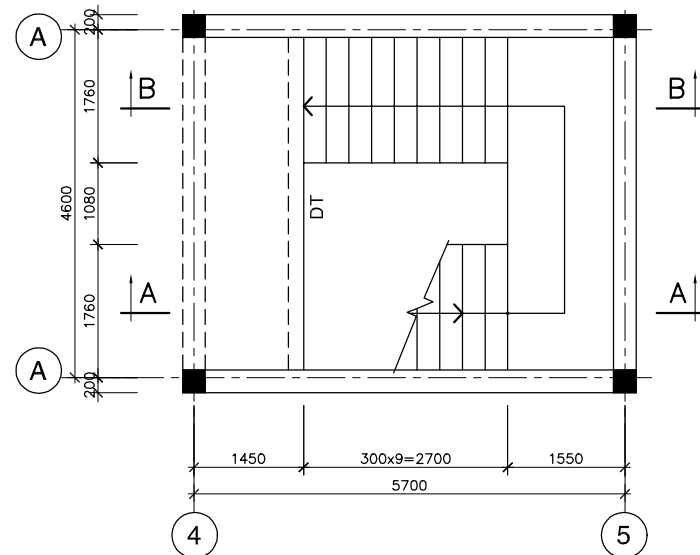
DESIGNED
KIKUTA HIROSHI

CHECKED
KONDO MASAMI

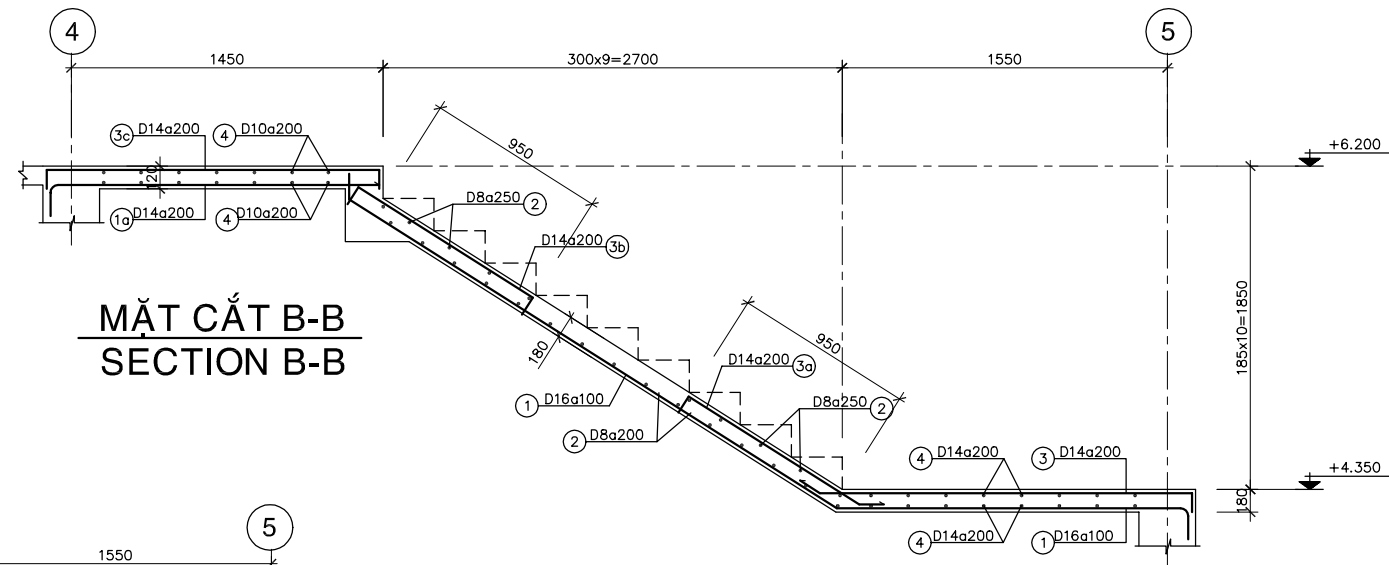
DATE : JUNE 2001 DWG. No. PE-WWTP-306-45



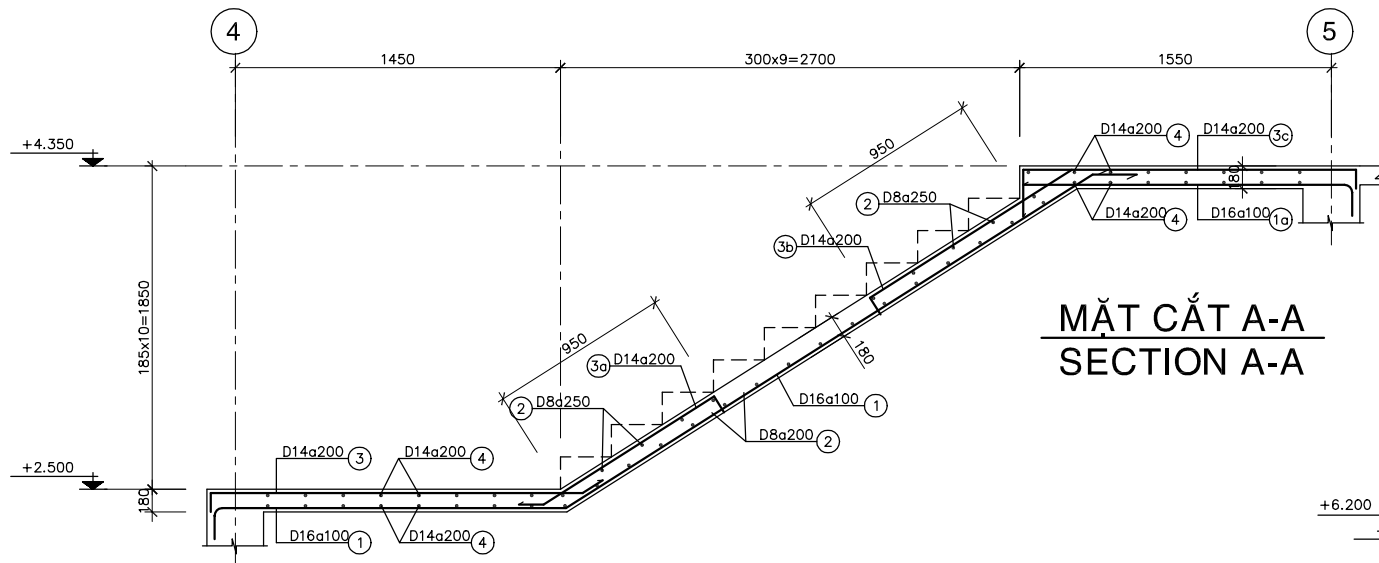
MẶT BẰNG CẦU THANG LẦU
PLAN OF 1st FLOOR STAIRCASE



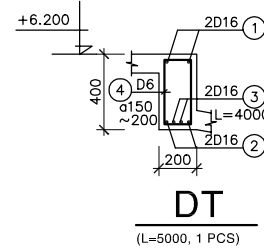
MẶT BẰNG CẦU THANG Mái
PLAN OF ROOF FLOOR STAIRCASE



MẶT CẮT B-B
SECTION B-B



MẶT CẮT A-A
SECTION A-A



DT
 (L=5000, 1 PCS)

GHI CHÚ:

- BÊ TÔNG LỚT ĐÁ 40X60, MÁC 100
- BÊ TÔNG ĐÁ 10X20, MÁC 300
- CỐT THÉP Ra=2000 Kg/cm²

NOTE :

- LEAN CONCRETE STONE 40x60, GRADE 100
- CONCRETE STONE 10x20, GRADE 300
- REINFORCEMENT Ra=2000 Kg/cm²

| NO. | DATE | DESCRIPTIONS | BY | APRO. |
|-----|------|--------------|----|-------|
| | | | | |
| | | | | |
| | | | | |
| | | | | |

| REVISIONS | | | | |
|-----------|--|--|--|--|
| | | | | |

PROJECT MANAGEMENT UNIT FOR
 HO CHI MINH CITY
 WATER ENVIRONMENT IMPROVEMENT

THE DETAILED DESIGN STUDY ON HO CHI MINH CITY
 WATER ENVIRONMENT IMPROVEMENT PROJECT
 IN THE SOCIALIST REPUBLIC OF VIET NAM

PACKAGE E
 WASTEWATER TREATMENT PLANT

STAIRCASE B
PLAN & DETAIL OF STAIRCASE

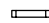



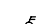

SCALE : N.T.S.

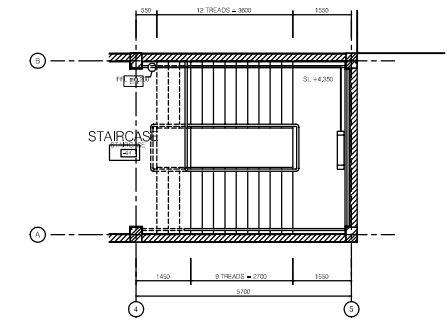
JAPAN INTERNATIONAL COOPERATION
 AGENCY (JICA)

PACIFIC CONSULTANTS INTERNATIONAL

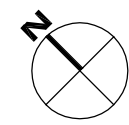
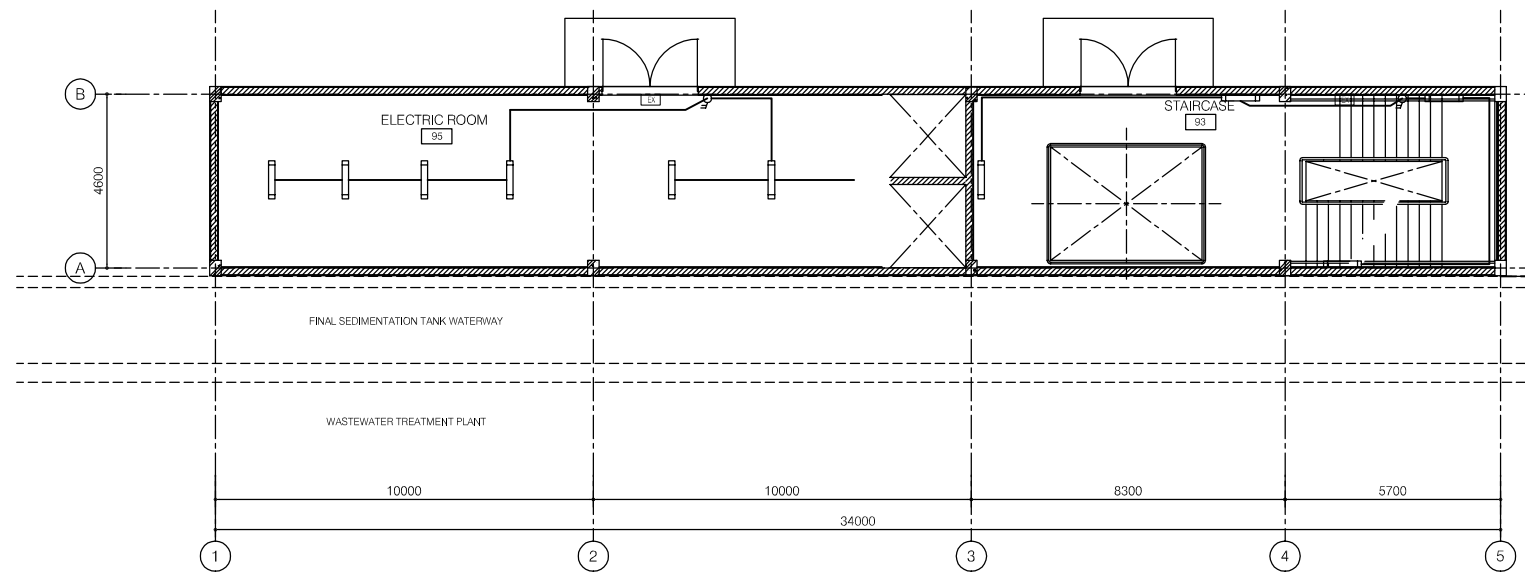
| | |
|----------------------------|-------------------------|
| DESIGNED KIKUTA HIROSHI | CHECKED KONDO MASAMI |
|----------------------------|-------------------------|

DATE : JUNE 2001 DWG. No. PE-WWTP-306-46

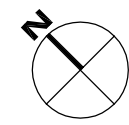
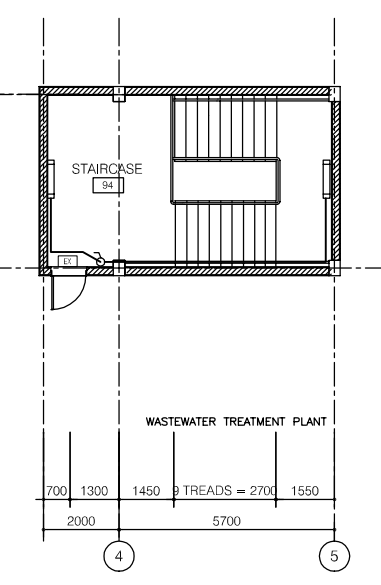
-  MOISTURE & RAINPROOF LIGHTING FIXTURES, STEEL HOUSING, OPAL ACRYLIC COVER, 2x36W, IP 65 TYPE
-  EMERGENCY LIGHT; SEALED, RECHARGEABLE NI-Cd BATTERIES, AUTOMATIC SWITCHING
AUTOMATIC RECHARGER, INSPECTION SWITCH, YEAR INDICATOR, RECHARGING MONITOR, 1x18W
-  EXIT SIGN LUMINAIRE (CEILING WALL MOUNTED TYPE); SEALED, RECHARGEABLE NI-Cd BATTERIES, AUTOMATIC SWITCHING
POWER ENOUGH TO KEEP THE LIGHT ON FOR AT LEAST 30 MIN., SINGLE FACE
AUTOMATIC RECHARGER, INSPECTION SWITCH, YEAR INDICATOR, RECHARGING MONITOR, 1x18W
-  SINGLE SWITCH, 1 WAY, 10A
-  SINGLE SWITCH, 2 WAY, 10A
-  DUPLEX SOCKET OUTLET, 2x3-PIN; 16A
(COVERED PROOF IN MOISTURE AREA)





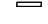




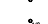

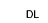





UNDERGROUND FLOOR PLAN
SCALE 1/100

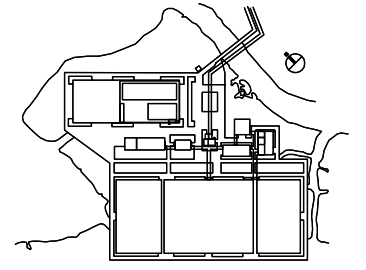


FIRST FLOOR PLAN
SCALE 1/100



SECOND FLOOR PLAN
SCALE 1/100

- LEGEND**
-  400W HIGH PRESSURE SODIUM INDUSTRIAL HIGH BAY LUMINAIRE
 -  2x36W RECESSED FLOURESCENT
 -  2x36W FLOURESCENT BATTEN (CEILING OR WALL MOUNTED)
 -  1x40W DOWNLIGHT (in VC)
 -  100W OUTDOOR LUMINAIRE, IP 56
 -  1x40W DOWNLIGHT (in VC)
 -  1x18W FLOURESCENT BATTEN, IP65
 -  2x36W FLOURESCENT BATTEN, IP65
 -  2x10W NON-MAINTAINED EXIT LIGHT
 -  16A DUPLEX SOCKET OUTLET
 -  16A DUPLEX SOCKET OUTLET FOR A/C UNIT
 -  1 WAY SINGLE SWITCH
 -  DISTRIBUTION BOARD
 -  DL : DOOR LOUVER
 -  EAF : EXHAUST AIR FAN



| NO. | DATE | DESCRIPTIONS | BY | APRO. |
|-----|------|--------------|----|-------|
| | | | | |
| | | | | |
| | | | | |
| | | | | |

REVISIONS


PROJECT MANAGEMENT UNIT FOR
HO CHI MINH CITY
WATER ENVIRONMENT IMPROVEMENT


THE DETAILED DESIGN STUDY ON HO CHI MINH CITY
WATER ENVIRONMENT IMPROVEMENT PROJECT
IN THE SOCIALIST REPUBLIC OF VIET NAM

PACKAGE E
WASTEWATER TREATMENT PLANT

STAIRCASE B
ELECTRICAL PLAN

SCALE : 1/100

 JAPAN INTERNATIONAL COOPERATION AGENCY (JICA)

 PACIFIC CONSULTANTS INTERNATIONAL

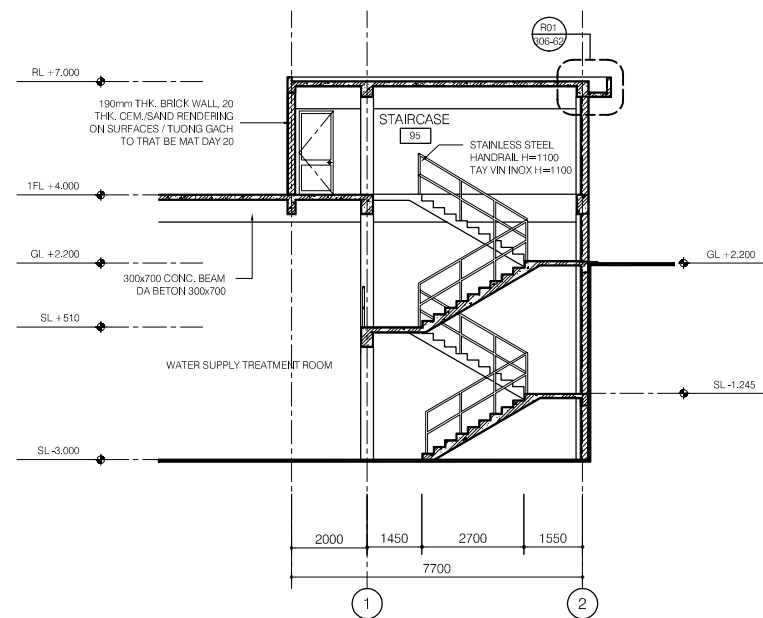
| | |
|----------------------------|-------------------------|
| DESIGNED KIKUTA HIROSHI | CHECKED KONDO MASAMI |
|----------------------------|-------------------------|

DATE : JUNE 2001 DWG. No. PE-WWTP-306-47

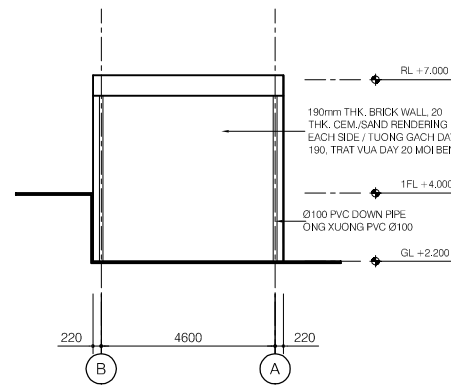
Staircase C

LEGEND

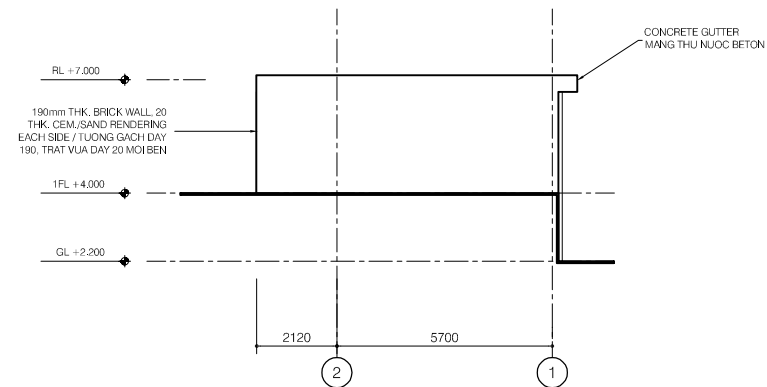
- 190mm THK. BRICK WALL, 20THK CEM./SAND RENDERING ON SURFACE / TUONG GACH DAY 190mm, TRAT VUA DAY 20 MOI MAT
- 90mm THK. BRICK WALL, 20THK CEM./SAND RENDERING ON SURFACE / TUONG GACH DAY 90mm, TRAT VUA DAY 20 MOI MAT



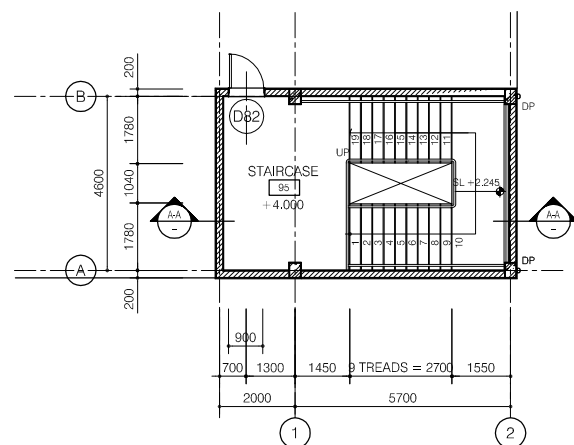
SECTION A-A



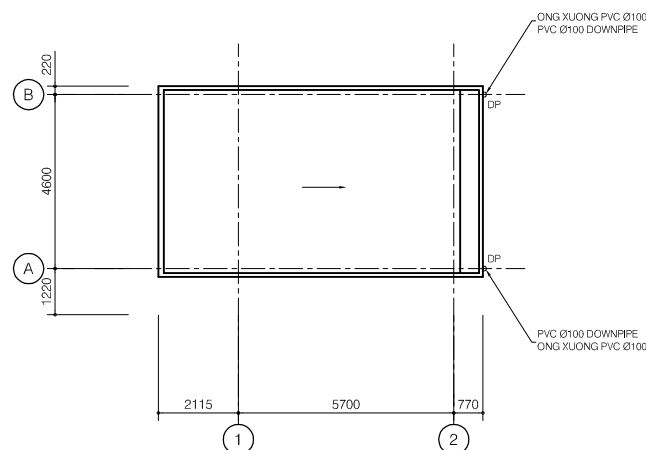
ELEVATION LINE 1



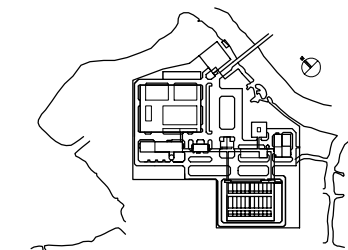
ELEVATION LINE B



FIRST FLOOR PLAN



ROOF PLAN



| | | | | | |
|--|--|--|--|--|--|
| | | | | | |
| | | | | | |
| | | | | | |
| | | | | | |
| | | | | | |

| NO. | DATE | DESCRIPTIONS | BY | APRO. |
|-----|------|--------------|----|-------|
|-----|------|--------------|----|-------|

REVISIONS

PROJECT MANAGEMENT UNIT FOR
HO CHI MINH CITY
WATER ENVIRONMENT IMPROVEMENT

THE DETAILED DESIGN STUDY ON HO CHI MINH CITY
WATER ENVIRONMENT IMPROVEMENT PROJECT
IN THE SOCIALIST REPUBLIC OF VIET NAM

PACKAGE E
WATER SUPPLY TREATMENT PLANT
STAIRCASE C
PLANS, SECTION, ELEVATIONS

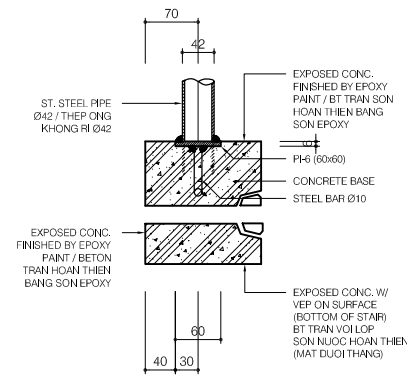
SCALE : 1/100

JAPAN INTERNATIONAL COOPERATION AGENCY (JICA)

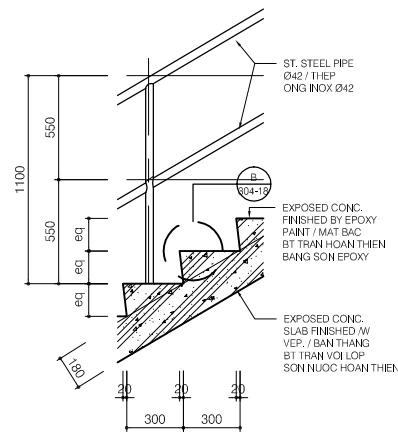
PACIFIC CONSULTANTS INTERNATIONAL

| | |
|----------------------------|-------------------------|
| DESIGNED KIKUTA HIROSHI | CHECKED KONDO MASAMI |
|----------------------------|-------------------------|

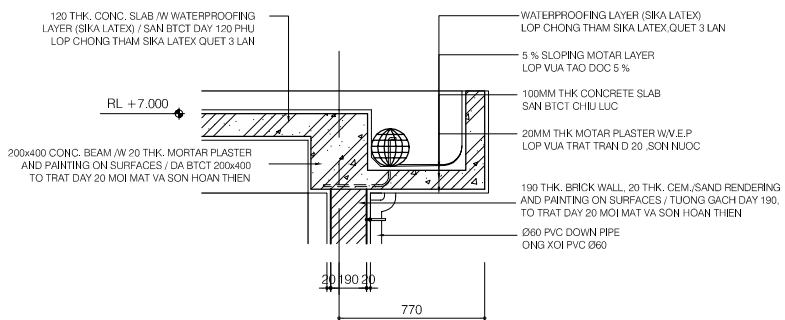
DATE : JUNE 2001 DWG. No. PE-WWTP-306-61



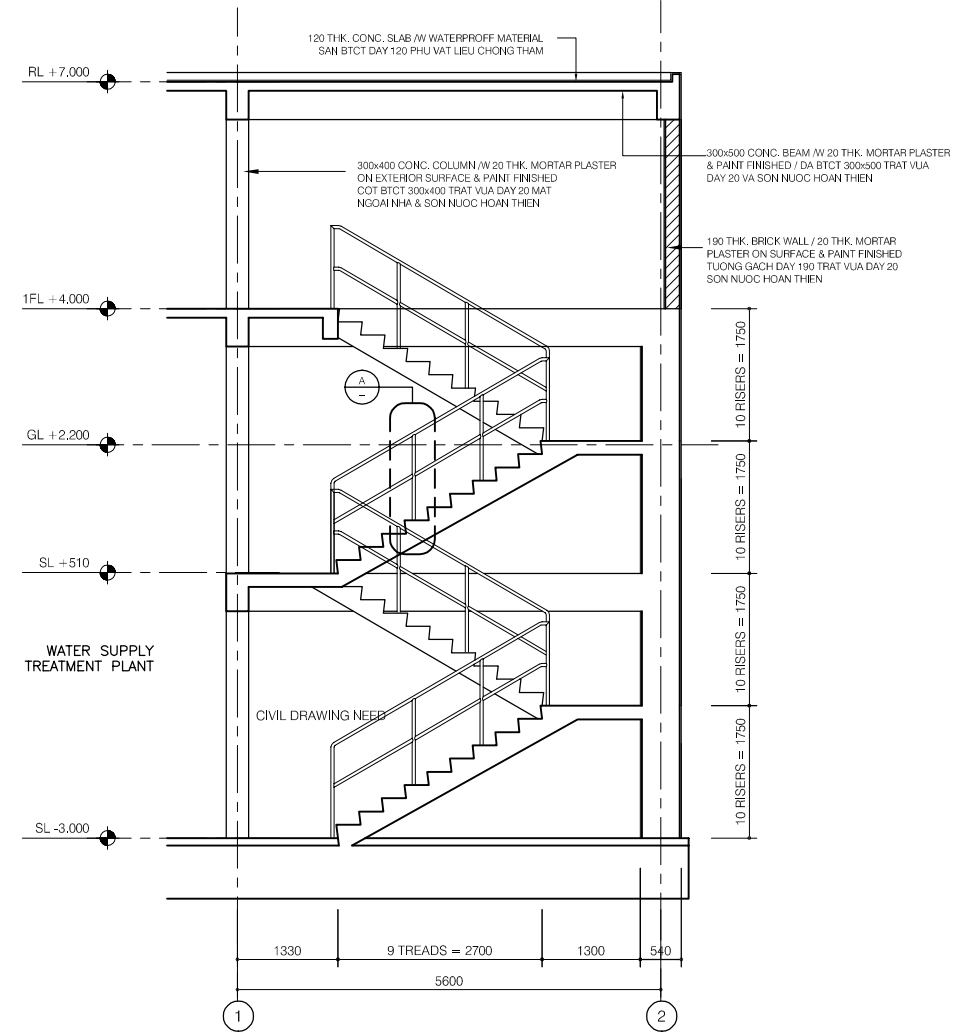
DETAIL B
SCALE: 1/20



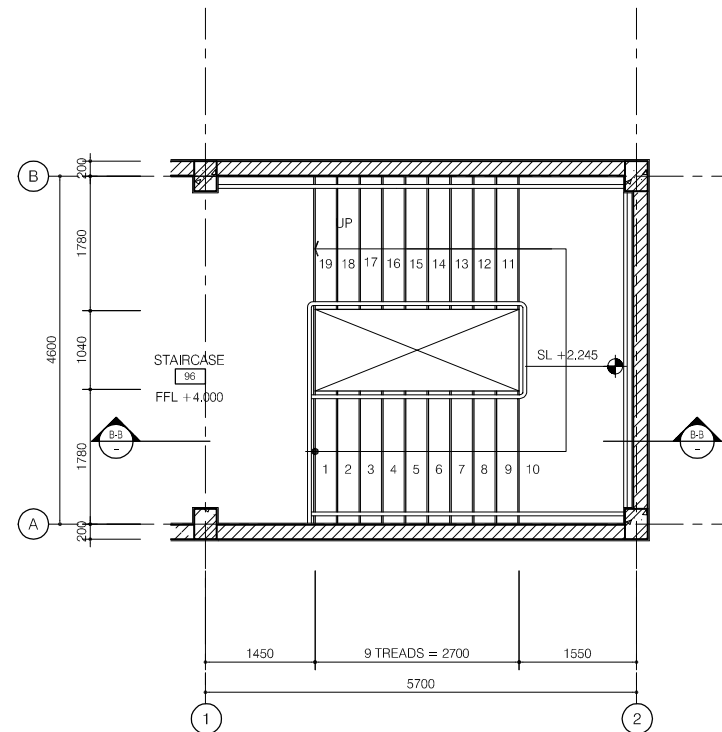
DETAIL A
SCALE: 1/20



SECTION DETAIL R01
SCALE: 1/20



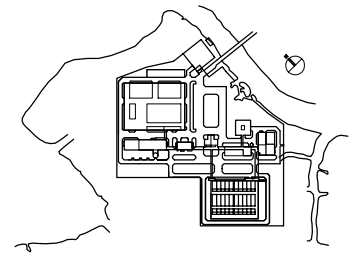
SECTION A-A
SCALE: 1/50



FLOOR PLAN (S01)
SCALE: 1/50

LEGEND

- 190mm THK. BRICK WALL, 20THK CEM./SAND RENDERING ON SURFACE / TUONG GACH DAY 190mm, TRAT VUA DAY 20 MOI MAT
- 90mm THK. BRICK WALL, 20THK CEM./SAND RENDERING ON SURFACE / TUONG GACH DAY 90mm, TRAT VUA DAY 20 MOI MAT



| NO. | DATE | DESCRIPTIONS | BY | APRO. |
|-----|------|--------------|----|-------|
|-----|------|--------------|----|-------|

REVISIONS

PROJECT MANAGEMENT UNIT FOR
HO CHI MINH CITY
WATER ENVIRONMENT IMPROVEMENT

THE DETAILED DESIGN STUDY ON HO CHI MINH CITY
WATER ENVIRONMENT IMPROVEMENT PROJECT
IN THE SOCIALIST REPUBLIC OF VIET NAM

PACKAGE E
WATER SUPPLY TREATMENT PLAN

**STAIRCASE C
DETAILS**

SCALE : AS SHOWN

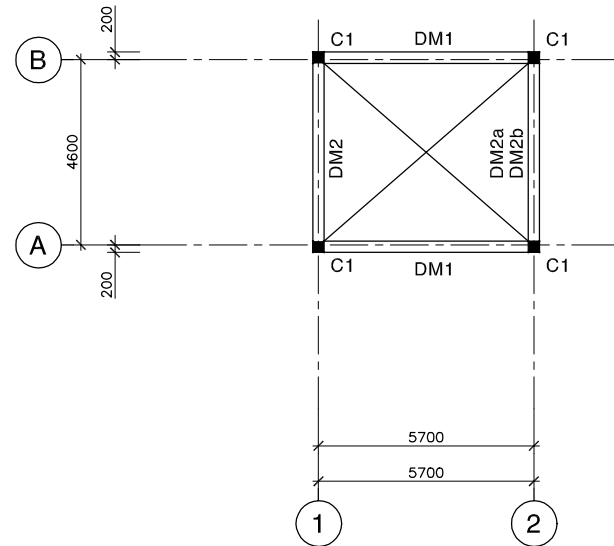
JICA JAPAN INTERNATIONAL COOPERATION
AGENCY (JICA)

PC PACIFIC CONSULTANTS INTERNATIONAL

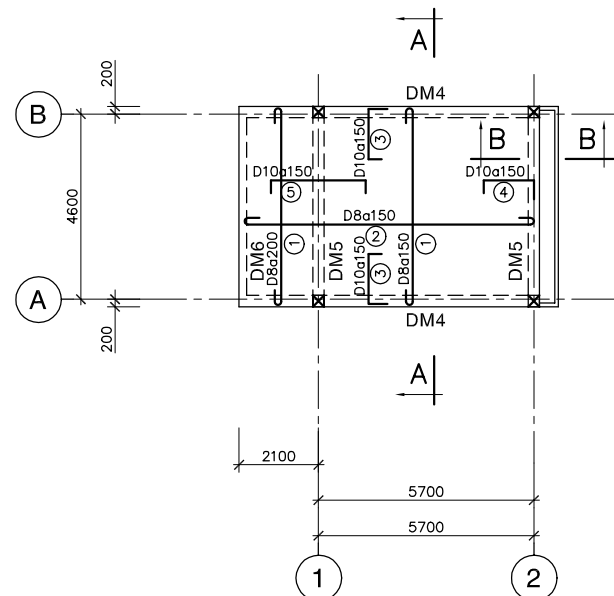
DESIGNED
KIKUTA HIROSHI

CHECKED
KONDO MASAMI

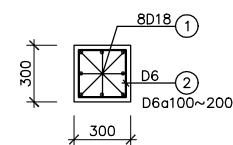
DATE : JUNE 2001 DWG. No. PE-WWTP-306-62



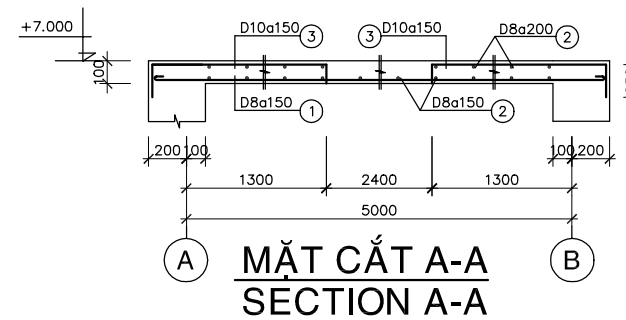
MẶT BẰNG DẦM & SÀN LẦU 2
PLAN OF 2nd FLOOR SLAB & BEAMS (+4.000)



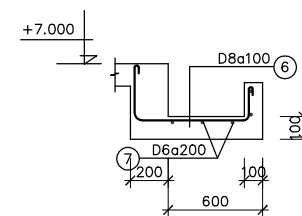
MẶT BẰNG DẦM & SÀN MÁI
PLAN OF ROOF SLAB & BEAMS (+7.000)



COLUMN C1
 (FROM -3.000~+7.000, 4 PCS)



MẶT CẮT A-A
SECTION A-A



MẶT CẮT B-B
SECTION B-B

GHI CHÚ:

- BÊ TÔNG LỚT ĐÁ 40x60, MÁC 100
- BÊ TÔNG ĐÁ 10x20, MÁC 300
- CỐT THÉP $R_a=2000$ Kg/cm²

NOTE :

- LEAN CONCRETE STONE 40x60, GRADE 100
- CONCRETE STONE 10x20, GRADE 300
- REINFORCEMENT $R_a=2000$ Kg/cm²

| NO. | DATE | DESCRIPTIONS | BY | APRO. |
|-----|------|--------------|----|-------|
|-----|------|--------------|----|-------|

REVISIONS

PROJECT MANAGEMENT UNIT FOR
 HO CHI MINH CITY
 WATER ENVIRONMENT IMPROVEMENT

THE DETAILED DESIGN STUDY ON HO CHI MINH CITY
 WATER ENVIRONMENT IMPROVEMENT PROJECT
 IN THE SOCIALIST REPUBLIC OF VIET NAM

PACKAGE E
 WASTEWATER TREATMENT PLANT

STAIRCASE C
PLAN & DETAIL OF 1st FLOOR & FLOOR
SLAB, BEAMS, COLUMNS

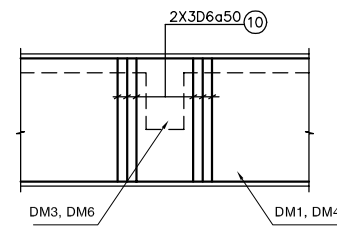
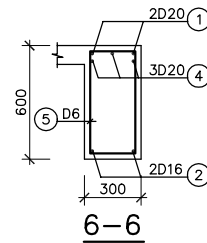
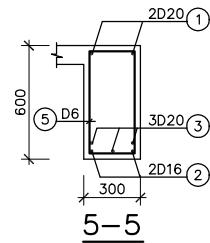
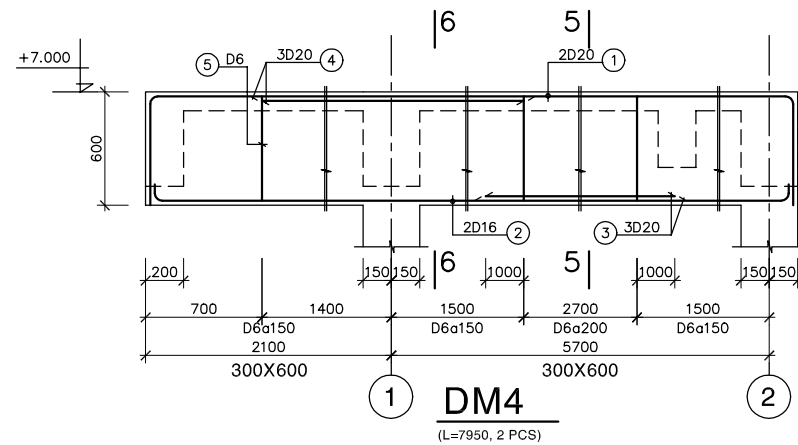
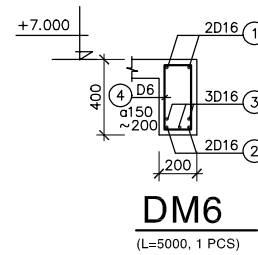
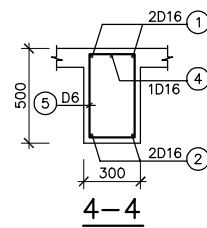
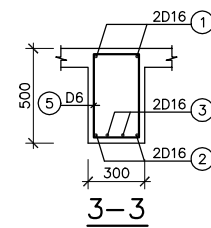
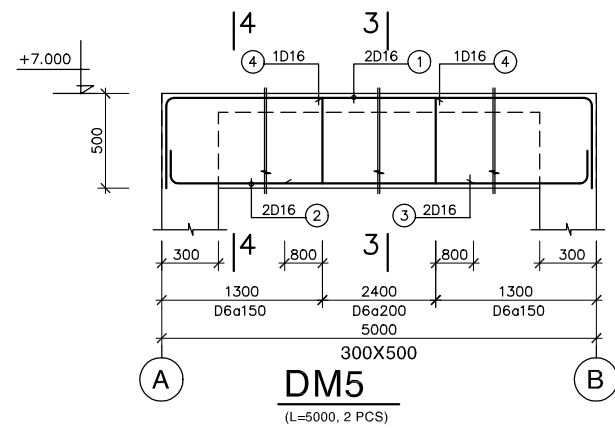
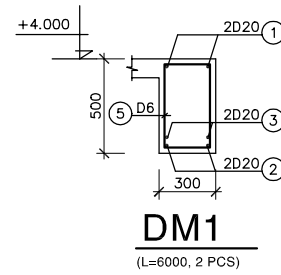
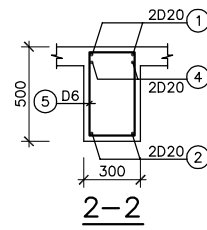
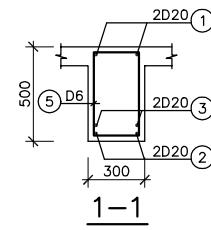
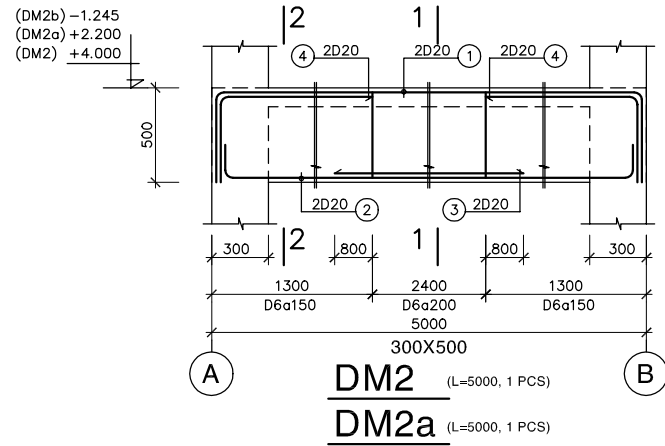
SCALE : N.T.S.

JAPAN INTERNATIONAL COOPERATION
 AGENCY (JICA)

PACIFIC CONSULTANTS INTERNATIONAL

| | |
|----------------------------|-------------------------|
| DESIGNED KIKUTA HIROSHI | CHECKED KONDO MASAMI |
|----------------------------|-------------------------|

DATE : JUNE 2001 DWG. No. PE-WWTP-306-63



**CT GIA CƯỜNG DÀM TRỰC GIAO
CONNECTION BEAM TO BEAM**

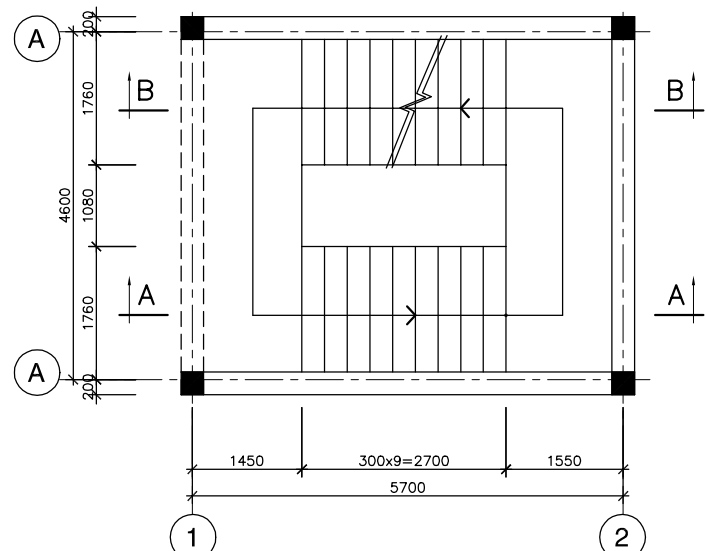
GHI CHÚ:

- BÊ TÔNG LỚT ĐÁ 40x60, MÁC 100
- BÊ TÔNG ĐÁ 10x20, MÁC 300
- CỐT THÉP Ra=2000 Kg/cm²

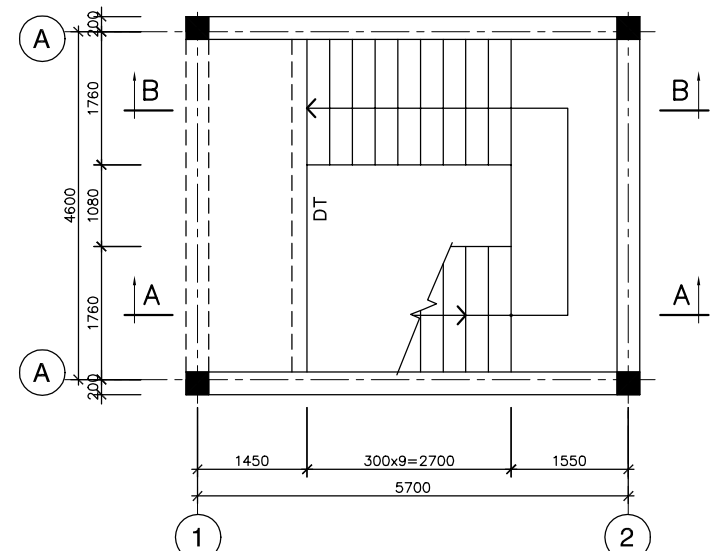
NOTE :

- LEAN CONCRETE STONE 40x60, GRADE 100
- CONCRETE STONE 10x20, GRADE 300
- REINFORCEMENT Ra=2000 Kg/cm²

| NO. | DATE | DESCRIPTIONS | BY | APRO. |
|---|------|--|----|-------|
| REVISIONS | | | | |
| PROJECT MANAGEMENT UNIT FOR HO CHI MINH CITY WATER ENVIRONMENT IMPROVEMENT | | | | |
| THE DETAILED DESIGN STUDY ON HO CHI MINH CITY WATER ENVIRONMENT IMPROVEMENT PROJECT IN THE SOCIALIST REPUBLIC OF VIET NAM | | | | |
| PACKAGE E WASTEWATER TREATMENT PLANT | | | | |
| STAIRCASE C DETAIL OF 1st FLOOR & ROOF BEAMS | | | | |
| SCALE : N.T.S. | | | | |
| JICA | | JAPAN INTERNATIONAL COOPERATION AGENCY (JICA) | | |
| PACIFIC CONSULTANTS INTERNATIONAL | | | | |
| DESIGNED KIKUTA HIROSHI | | CHECKED KONDO MASAMI | | |
| DATE : JUNE 2001 | | DWG. No. PE-WWTP-306-64 | | |



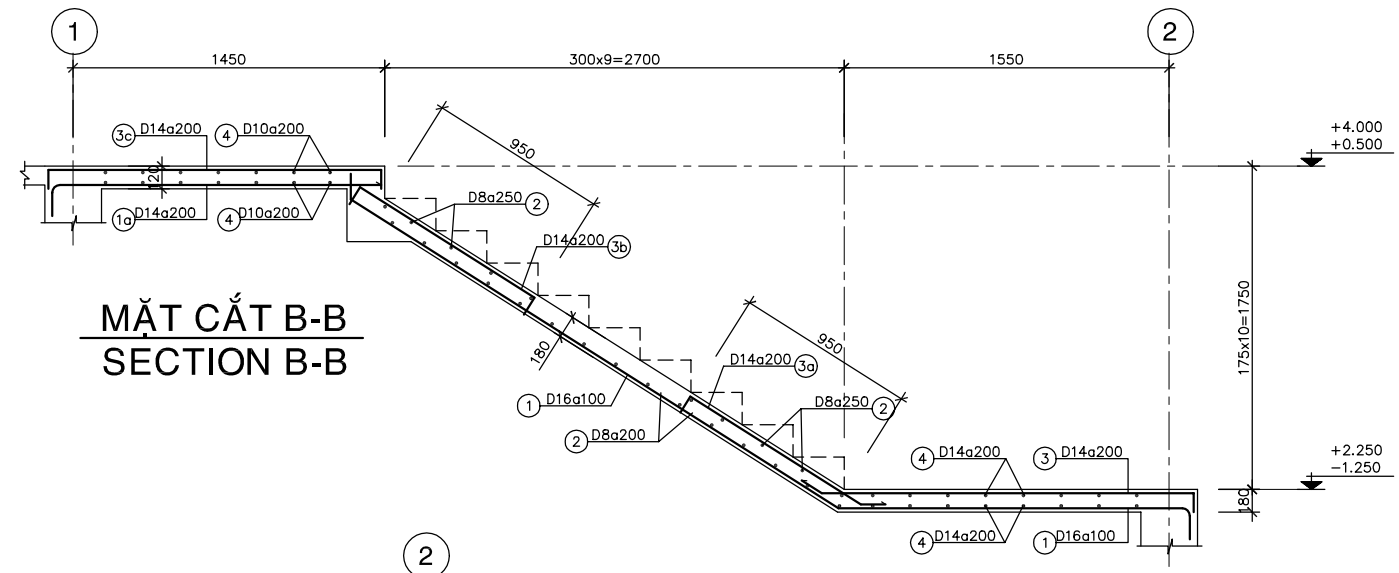
MẶT BẰNG CẦU THANG LẦU
PLAN OF 1st FLOOR STAIRCASE



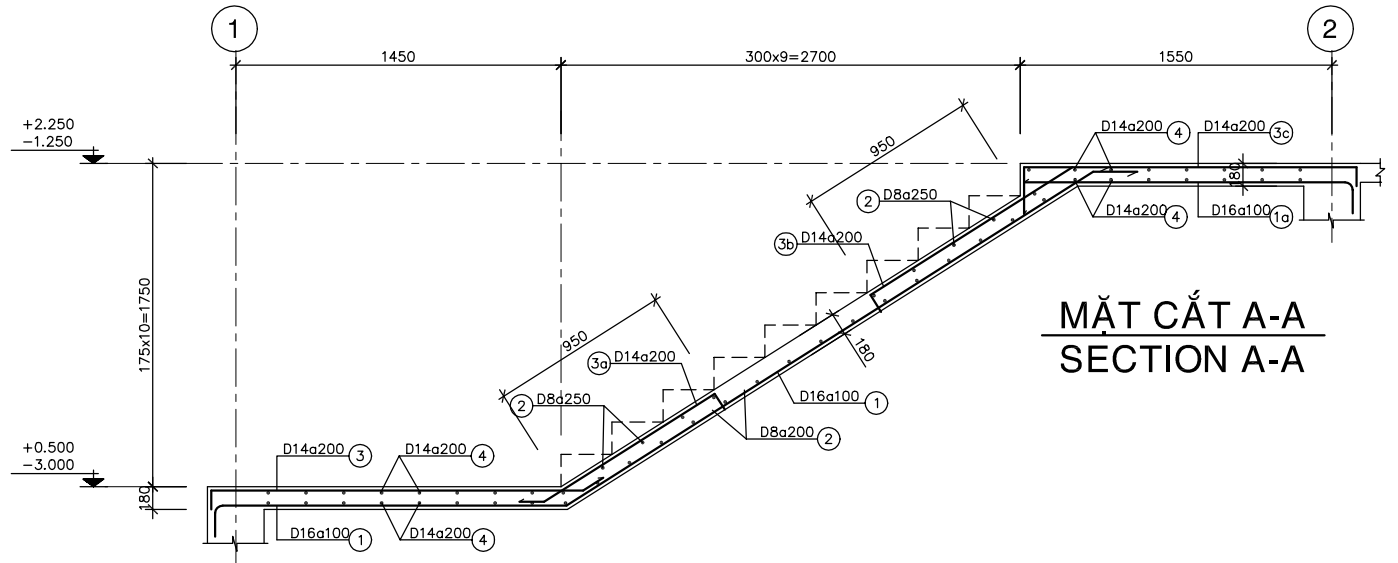
MẶT BẰNG CẦU THANG MÁI
PLAN OF ROOF FLOOR STAIRCASE

GHI CHÚ:
 - BÊ TÔNG LÓT ĐÁ 40X60, MÁC 100
 - BÊ TÔNG ĐÁ 10X20, MÁC 300
 - CỐT THÉP Ra=2000 Kg/cm²

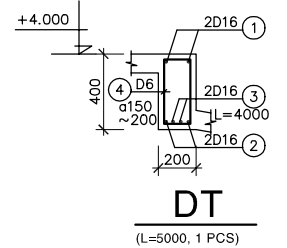
NOTE :
 - LEAN CONCRETE STONE 40x60, GRADE 100
 - CONCRETE STONE 10x20, GRADE 300
 - REINFORCEMENT Ra=2000 Kg/cm²



MẶT CẮT B-B
SECTION B-B

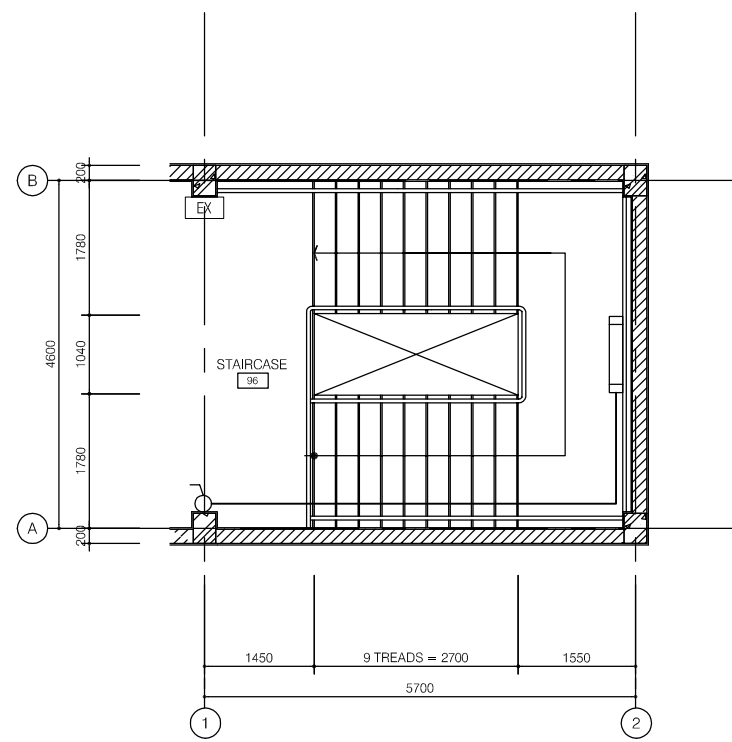


MẶT CẮT A-A
SECTION A-A

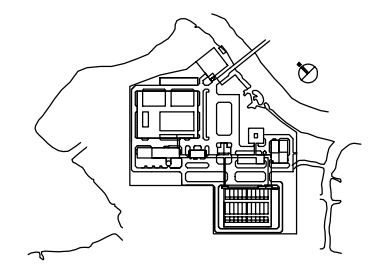


| NO. | DATE | DESCRIPTIONS | BY | APRO. |
|---|------|-------------------------|----|-------|
| REVISIONS | | | | |
| PROJECT MANAGEMENT UNIT FOR HO CHI MINH CITY WATER ENVIRONMENT IMPROVEMENT | | | | |
| THE DETAILED DESIGN STUDY ON HO CHI MINH CITY WATER ENVIRONMENT IMPROVEMENT PROJECT IN THE SOCIALIST REPUBLIC OF VIET NAM | | | | |
| PACKAGE E WASTEWATER TREATMENT PLANT | | | | |
| STAIRCASE C PLAN & DETAIL OF STAIRCASE | | | | |
| SCALE : N.T.S. | | | | |
| JICA JAPAN INTERNATIONAL COOPERATION AGENCY (JICA) | | | | |
| PACIFIC CONSULTANTS INTERNATIONAL | | | | |
| DESIGNED KIKUTA HIROSHI | | CHECKED KONDO MASAMI | | |
| DATE : JUNE 2001 | | DWG. No. PE-WWTP-306-65 | | |

- LEGEND**
- ⊗ 400W HIGH PRESSURE SODIUM INDUSTRIAL HIGH BAY LUMINAIRE
 - 2x36W RECESSED FLOURESCENT
 - ▬ 2x36W FLOURESCENT BATTEN (CEILING OR WALL MOUNTED)
 - 1x40W DOWNLIGHT (in VIC)
 - 100W OUTDOOR LUMINAIRE, IP 56
 - 1x40W DOWNLIGHT (in VIC)
 - ▬ 1x18W FLOURESCENT BATTEN, IP65
 - ▬ 2x36W FLOURESCENT BATTEN, IP65
 - 2x10W NON-MAINTAINED EXIT LIGHT
 - 16A DUPLEX SOCKET OUTLET
 - 16A DUPLEX SOCKET OUTLET FOR A/C UNIT
 - ⚡ 1 WAY SINGLE SWITCH
 - DISTRIBUTION BOARD
 - DL : DOOR LOUVER
 - EAF : EXHAUST AIR FAN



FIRST FLOOR PLAN
1/50



| | | | | |
|--|--|--|--|--|
| | | | | |
| | | | | |
| | | | | |
| | | | | |
| | | | | |

| NO. | DATE | DESCRIPTIONS | BY | APPRO. |
|-----|------|--------------|----|--------|
|-----|------|--------------|----|--------|

REVISIONS

PROJECT MANAGEMENT UNIT FOR
HO CHI MINH CITY
WATER ENVIRONMENT IMPROVEMENT

THE DETAILED DESIGN STUDY ON HO CHI MINH CITY
WATER ENVIRONMENT IMPROVEMENT PROJECT
IN THE SOCIALIST REPUBLIC OF VIET NAM

PACKAGE E
WASTEWATER TREATMENT PLANT

STAIRCASE C
ELECTRICAL PLAN

SCALE : 1/50

JAPAN INTERNATIONAL COOPERATION AGENCY (JICA)

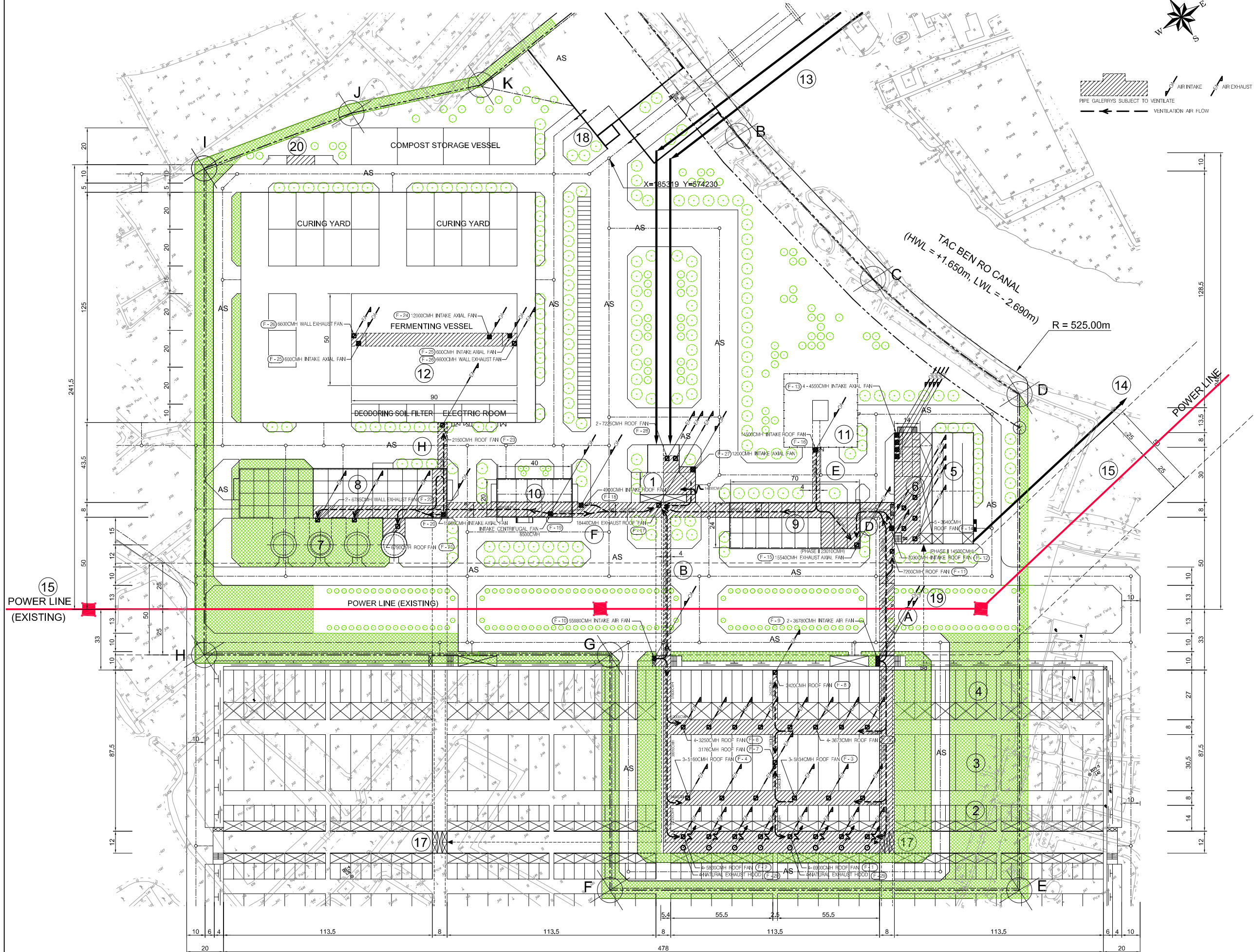
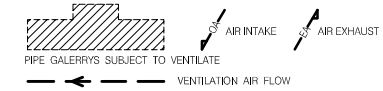
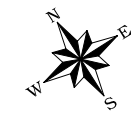
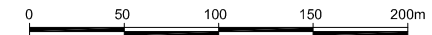
PACIFIC CONSULTANTS INTERNATIONAL

| | |
|----------------------------|-------------------------|
| DESIGNED KIKUTA HIROSHI | CHECKED KONDO MASAMI |
|----------------------------|-------------------------|

DATE : JUNE 2001 DWG. No. PE-WWTP-306-66

Ventilation facility

PIPE GALLERY PLAN



VENTILATION FANS SCHUDLE

| | | | | |
|-----------------------------|----------------------|----------------------------------|---|----------------------|
| F-1 | AIR EXHAUST FAN | ROOF FAN | dia.600 x 6900CMH x 60Pa x 0.4KW - 4 | |
| F-2 | AIR EXHAUST FAN | ROOF FAN | dia.600 x 5830CMH x 60Pa x 0.4KW - 1 | |
| F-3 | AIR EXHAUST FAN | ROOF FAN | dia.600 x 5834CMH x 70Pa x 0.4KW - 3 | |
| F-4 | AIR EXHAUST FAN | ROOF FAN | dia.600 x 5160CMH x 80Pa x 0.4KW - 3 | |
| F-5 | AIR EXHAUST FAN | ROOF FAN | dia.600 x 3673CMH x 50Pa x 0.3KW - 4 | |
| F-6 | AIR EXHAUST FAN | ROOF FAN | dia.500 x 3250CMH x 80Pa x 0.3KW - 4 | |
| F-7 | AIR EXHAUST FAN | ROOF FAN | dia.500 x 3176CMH x 80Pa x 0.3KW - 1 | |
| F-8 | AIR EXHAUST FAN | ROOF FAN | dia.400 x 2400CMH x 50Pa x 0.3KW - 1 | |
| F-9 | AIR INTAKE FAN | AXIAL FAN | dia.1000 x 3678CMH x 400Pa x 7.5KW - 2 | |
| F-10 | AIR INTAKE FAN | AXIAL FAN | dia.1120 x 5580CMH x 400Pa x 1.9KW - 1 | |
| F-11 | AIR EXHAUST FAN | ROOF FAN | dia.800 x 7200CMH x 50Pa x 0.75KW - 1 | |
| F-12 | AIR INTAKE FAN | ROOF FAN | dia.800 x 7030CMH x 40Pa x 0.75KW - 1 | |
| F-13 | AIR INTAKE FAN | AXIAL FAN | dia.400 x 4550CMH x 350Pa x 0.9KW - 4 | |
| F-14 | AIR EXHAUST FAN | ROOF FAN | dia.400 x 3840CMH x 40Pa x 0.3KW - 5 | |
| F-15 | AIR EXHAUST FAN | AXIAL FAN | dia.800 x 23010CMH x 50Pa x 1.1KW - 1 | |
| PHASE I THROTTLE 155-00CMH | | | | |
| F-16 | AIR INTAKE FAN | ROOF FAN | dia.750 x 14500CMH x 40Pa x 1.9KW - 1 | |
| F-17 | AIR EXHAUST FAN | ROOF FAN | dia.900 x 18400CMH x 50Pa x 2.2KW - 1 | |
| F-18 | AIR INTAKE FAN | ROOF FAN | dia.600 x 4900CMH x 90Pa x 0.75KW - 1 | |
| F-19 | AIR INTAKE FAN | CENTRIFUGAL FAN | #3 x 8500CMH x 350Pa x 3.76KW - 1 | |
| F-20 | AIR INTAKE FAN | AXIAL FAN | dia.710 x 15560CMH x 400Pa x 5.6KW - 1 | |
| F-21 | AIR EXHAUST FAN | ROOF FAN | dia.600 x 6790CMH x 50Pa x 0.4KW - 1 | |
| F-22 | AIR EXHAUST FAN | WALL EXHAUST FAN WITH STEEL HOOD | dia.600 x 6785CMH x 80Pa x 0.75KW - 2 | |
| F-23 | AIR EXHAUST FAN | ROOF FAN | dia.400 x 2150CMH x 100Pa x 0.3KW - 1 | |
| F-24 | AIR INTAKE FAN | AXIAL FAN | dia.600 x 12000CMH x 400Pa x 3.76KW - 1 | |
| F-25 | AIR INTAKE FAN | AXIAL FAN | dia.300 x 600CMH x 350Pa x 0.28KW - 2 | |
| WITH SOUND ABSORBING PLENUM | | | | |
| F-26 | AIR EXHAUST FAN | WALL EXHAUST FAN WITH SS HOOD | dia.600 x 6600CMH x 100Pa x 0.75KW - 2 | |
| F-27 | AIR INTAKE FAN | AXIAL FAN | dia.300 x 1200CMH x 300Pa x 0.28KW - 1 | |
| WITH SOUND ABSORBING PLENUM | | | | |
| F-28 | AIR EXHAUST FAN | ROOF FAN | dia.600 x 7225CMH x 50Pa x 0.4KW - 2 | |
| F-29 | NATURAL EXHAUST HOOD | ROOF FAN STYLE HOOD | dia.600 - 8 | |
| F-30 | F-31 | F-32 | F-33 | CRROSS RESISTANT FAN |

- ### LEGEND
- ① LIFT PUMPING STATION
 - ② PRIMARY SEDIMENTATION TANK (5.0m x 13.0m x 3.0m x 160 waterway 80 tank)
 - ③ AERATION TANK (10.5m x 28.0m x 5.5m x 80 tank)
 - ④ FINAL SEDIMENTATION TANK (5.0m x 23.0m x 3.5m x 1160 waterway 80 tank)
 - ⑤ DISINFECTION TANK (5.0m x 54.0m x 5.0m x 3 bend 4 waterway 1 tank)
 - ⑥ CHLORINATION STORAGE BUILDING
 - ⑦ SAND FILTRATION EFFLUENT TANK, SECONDARY EFFLUENT TANK
 - ⑧ GRAVITY THICKENER (14.0m x 3.5m x 4 tank)
 - ⑨ DEWATERING & CENTRIFUGAL THICKENER BUILDING
 - ⑩ BLOWER BUILDING
 - ⑪ MAIN BUILDING (Control Room, Electrical Room, etc.)
 - ⑫ MAIN SUBSTATION
 - ⑬ COMPOST PLANT FACILITY
 - ⑭ INLET PIPE (ø2,400mm x 1,300mm x 0.5%, ø3,800mm x 1,800mm x 0.4%)
 - ⑮ EFFLUENT PIPE (ø2,500mm x 1.2%, HP)
 - ⑯ POWER LINE (EXISTING)
 - ⑰ TOWER OF TRANSMISSION LINE
 - ⑱ DISTRIBUTION TANK
 - ⑲ GUARD ROOM
 - ⑳ CONNECTION PIPE (ø2,500mm, SP)
 - ㉑ TRUCK SCALE
 - AS : ASPHALT CONCRETE

| NO. | DATE | DESCRIPTIONS | BY | APRO. |
|-----|------|--------------|----|-------|
| | | | | |
| | | | | |
| | | | | |
| | | | | |

REVISIONS

PROJECT MANAGEMENT UNIT FOR
HO CHI MINH CITY
WATER ENVIRONMENT IMPROVEMENT

THE DETAILED DESIGN STUDY ON HO CHI MINH CITY
WATER ENVIRONMENT IMPROVEMENT PROJECT
IN THE SOCIALIST REPUBLIC OF VIET NAM

PACKAGE E
WASTEWATER TREATMENT PLANT
VENTILATION FACILITY (1/27)
PIPE GALLERY PLAN

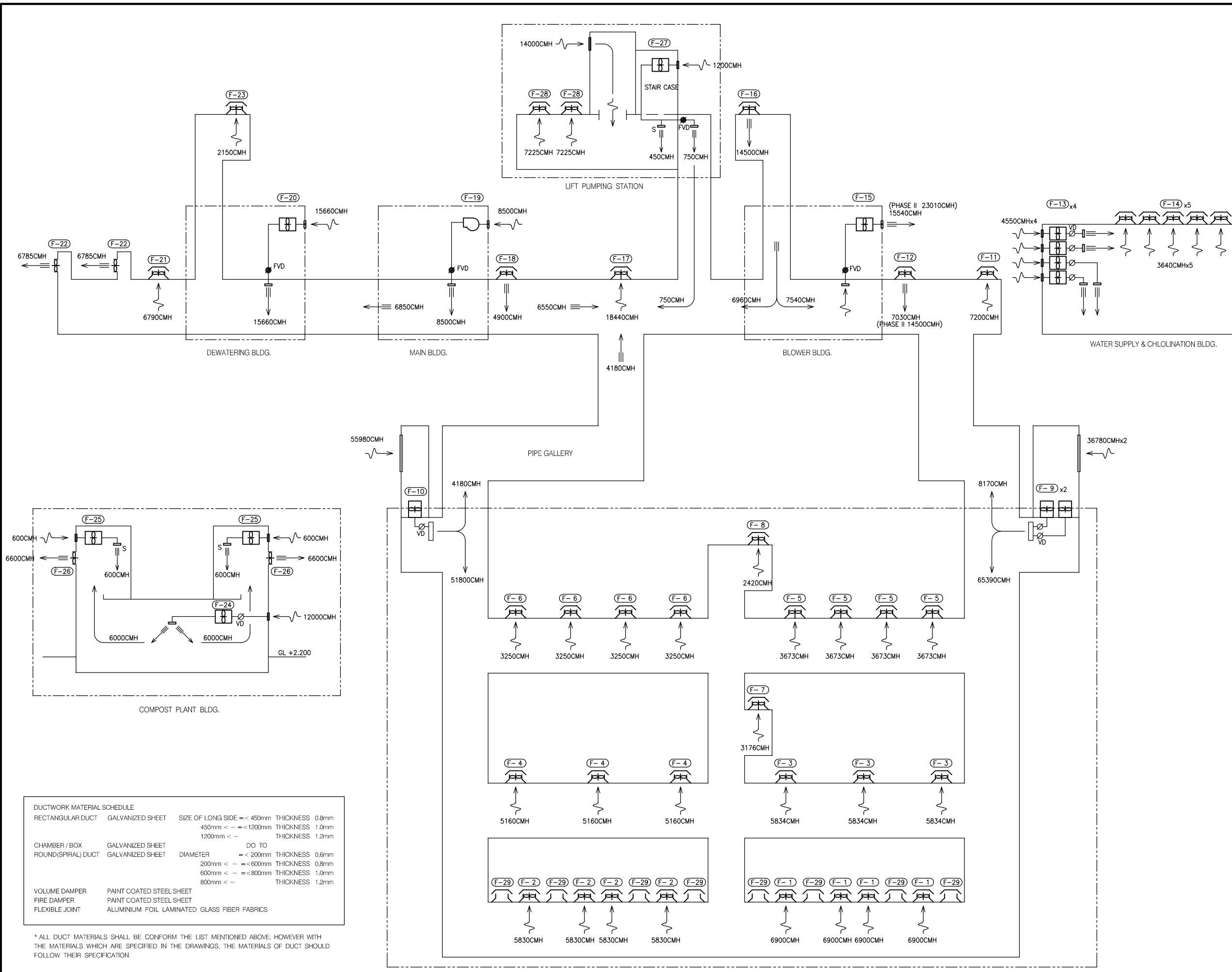
SCALE = 1 : 1000

JICA JAPAN INTERNATIONAL COOPERATION AGENCY (JICA)

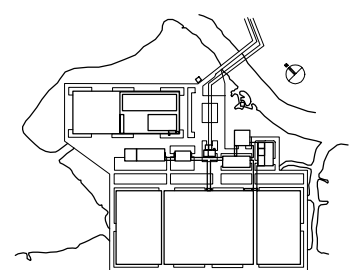
PACIFIC CONSULTANTS INTERNATIONAL

DESIGNED KIKUTA HIROSHI CHECKED KONDO MASAMI

DATE : JUNE 2001 DWG. No. PE - WWTP - 307 - 01



- LEGEND**
- ROOF FAN
 - NATURAL EXHAUST HOOD
 - AXIAL FAN
 - CENTRIFUGAL FAN
 - WALL EXHAUST FAN
 - VOLUME DAMPER
 - FIRE/VOLUME DAMPER
 - AIR OUTLET WITH SHUTTER



DUCTWORK MATERIAL SCHEDULE

| | | | |
|--------------------|--|-----------------------------|-----------------|
| RECTANGULAR DUCT | GALVANIZED SHEET | SIZE OF LONG SIDE = < 450mm | THICKNESS 0.8mm |
| | | 450mm < - - < 1200mm | THICKNESS 1.0mm |
| | | 1200mm < - - | THICKNESS 1.2mm |
| CHAMBER / BOX | GALVANIZED SHEET | DO TO | |
| ROUND(SPIRAL) DUCT | GALVANIZED SHEET | DIAMETER = < 200mm | THICKNESS 0.6mm |
| | | 200mm < - - < 600mm | THICKNESS 0.8mm |
| | | 600mm < - - < 800mm | THICKNESS 1.0mm |
| | | 800mm < - - | THICKNESS 1.2mm |
| VOLUME DAMPER | PAINT COATED STEEL SHEET | | |
| FIRE DAMPER | PAINT COATED STEEL SHEET | | |
| FLEXIBLE JOINT | ALUMINIUM FOIL LAMINATED GLASS FIBER FABRICS | | |

* ALL DUCT MATERIALS SHALL BE CONFORM THE LIST MENTIONED ABOVE. HOWEVER WITH THE MATERIALS WHICH ARE SPECIFIED IN THE DRAWINGS, THE MATERIALS OF DUCT SHOULD FOLLOW THEIR SPECIFICATION.

| NO. | DATE | DESCRIPTIONS | BY | APRO. |
|---|-------------------------------|-----------------------------------|----|-------|
| REVISIONS | | | | |
| PROJECT MANAGEMENT UNIT FOR HO CHI MINH CITY WATER ENVIRONMENT IMPROVEMENT | | | | |
| THE DETAILED DESIGN STUDY ON HO CHI MINH CITY WATER ENVIRONMENT IMPROVEMENT PROJECT IN THE SOCIALIST REPUBLIC OF VIET NAM | | | | |
| PACKAGE E WASTEWATER TREATMENT PLANT VENTILATION FACILITY (2/27) VENTILATION AIR FLOW SHEET | | | | |
| SCALE : 1/NOT | | | | |
| JAPAN INTERNATIONAL COOPERATION AGENCY (JICA) | | PACIFIC CONSULTANTS INTERNATIONAL | | |
| DESIGNED KIKUTA HIROSHI | CHECKED KONDO MASAMI | | | |
| DATE : JUNE 2001 | DWG. No. PE - WWTP - 307 - 02 | | | |