

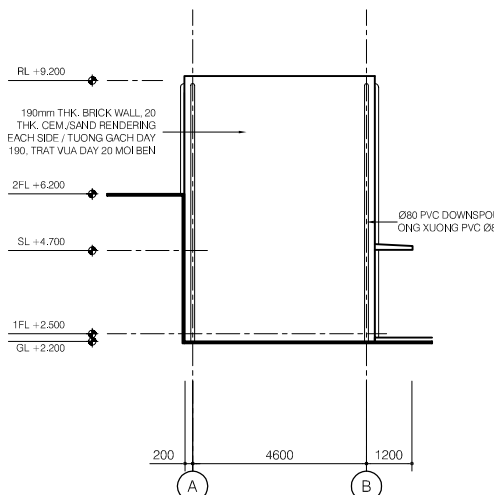
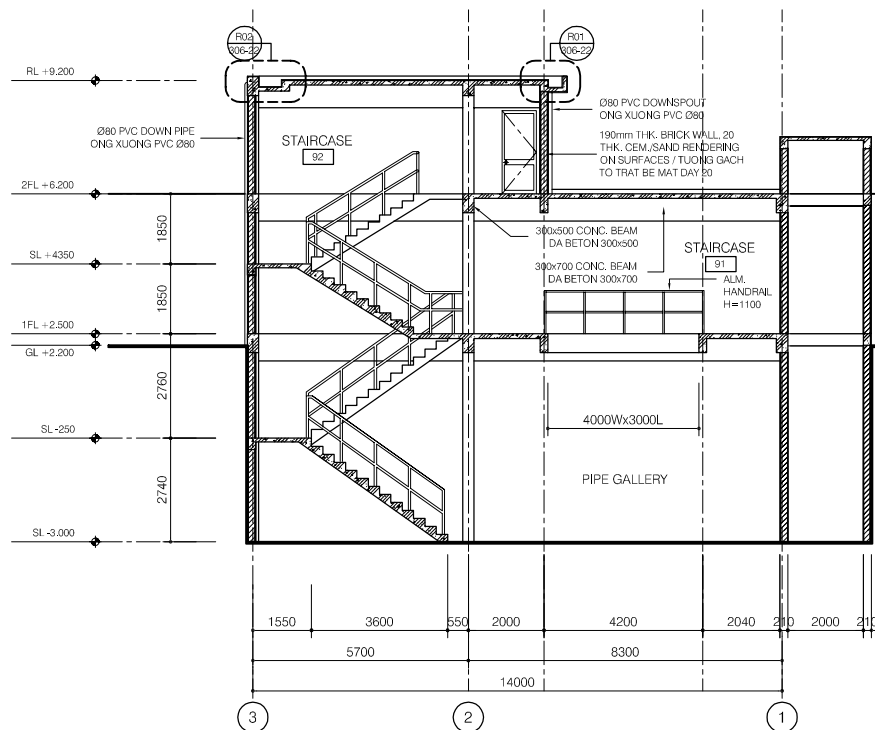


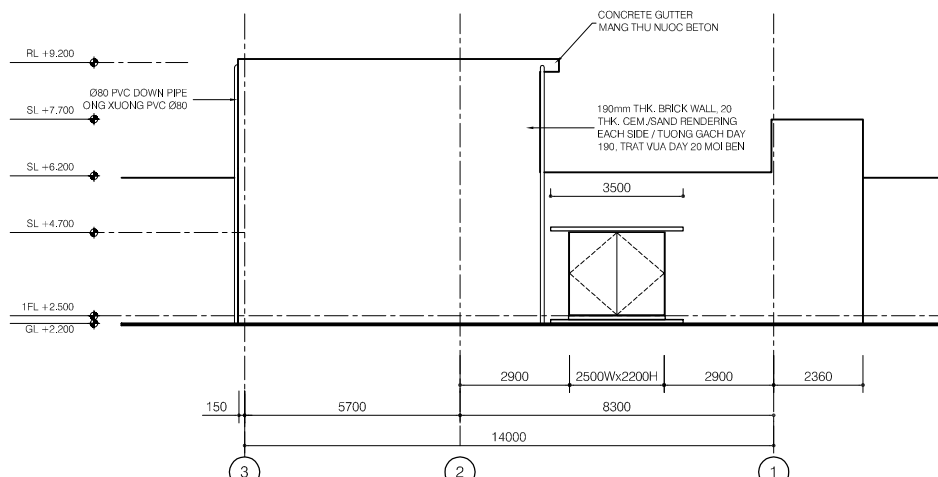
Staircase A

LEGEND

-  190mm THK. BRICK WALL, 20THK CEM./SAND RENDERING ON SURFACE / TUONG GACH DAY 190mm, TRAT VUA DAY 20 MOI BEN
-  90mm THK. BRICK WALL, 20THK CEM./SAND RENDERING ON SURFACE / TUONG GACH DAY 90mm, TRAT VUA DAY 20 MOI MAT

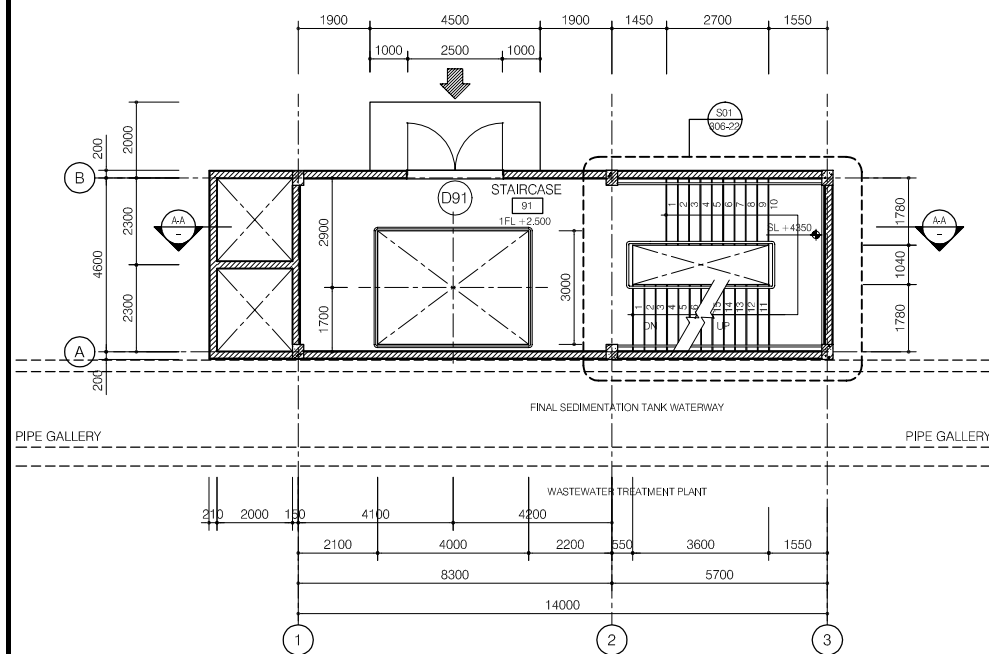


ELEVATION LINE 3

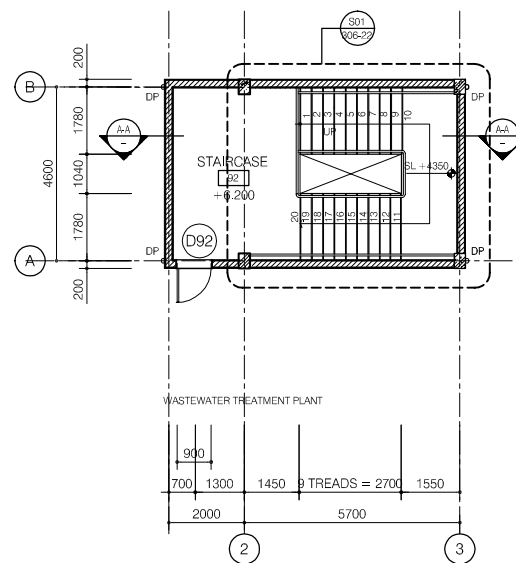


ELEVATION LINE B

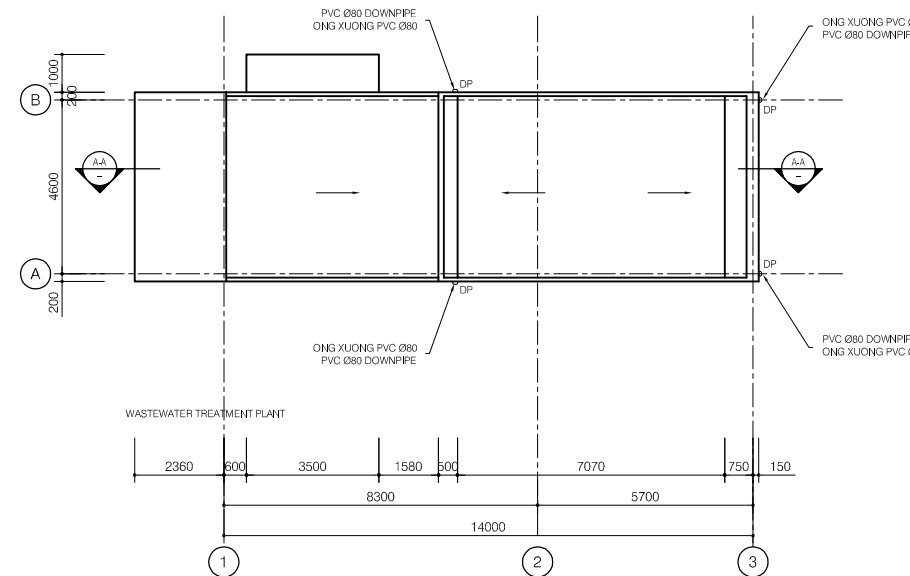
SECTION A-A



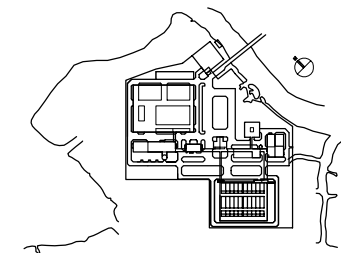
FIRST FLOOR PLAN



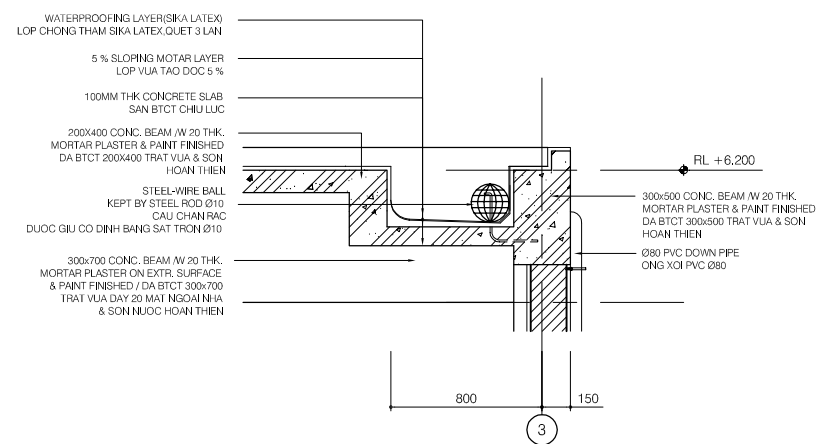
SECOND FLOOR PLAN



ROOF PLAN

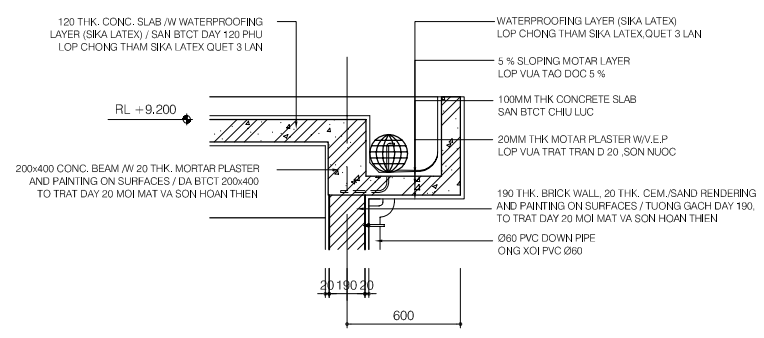


NO.	DATE	DESCRIPTIONS	BY	APRO.
REVISIONS				
PROJECT MANAGEMENT UNIT FOR HO CHI MINH CITY WATER ENVIRONMENT IMPROVEMENT				
THE DETAILED DESIGN STUDY ON HO CHI MINH CITY WATER ENVIRONMENT IMPROVEMENT PROJECT IN THE SOCIALIST REPUBLIC OF VIET NAM				
PACKAGE E WASTEWATER TREATMENT PLANT STAIRCASE A PLANS, SECTION & ELEVATIONS				
SCALE : 1/100				
 JAPAN INTERNATIONAL COOPERATION AGENCY (JICA)				
 PACIFIC CONSULTANTS INTERNATIONAL				
DESIGNED KIKUTA HIROSHI		CHECKED KONDO MASAMI		
DATE : JUNE 2001		DWG. No. PE-WWTP-306-21		



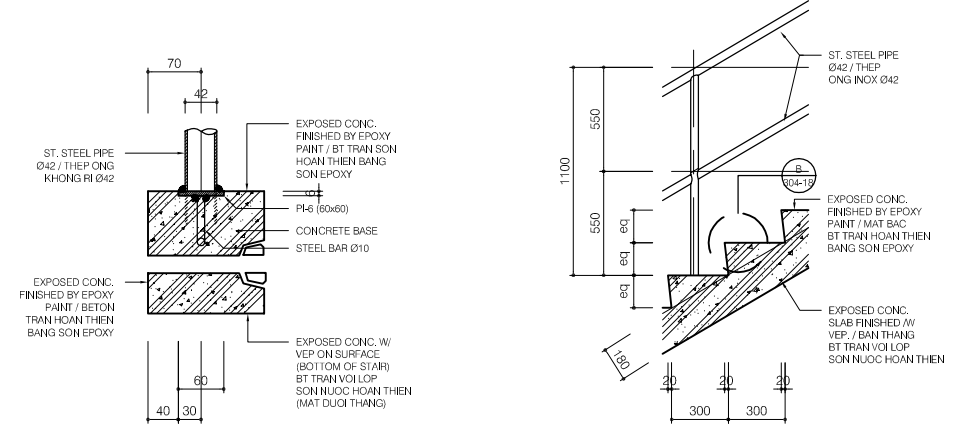
SECTION DETAIL R02

SCALE: 1/20



SECTION DETAIL R01

SCALE: 1/20

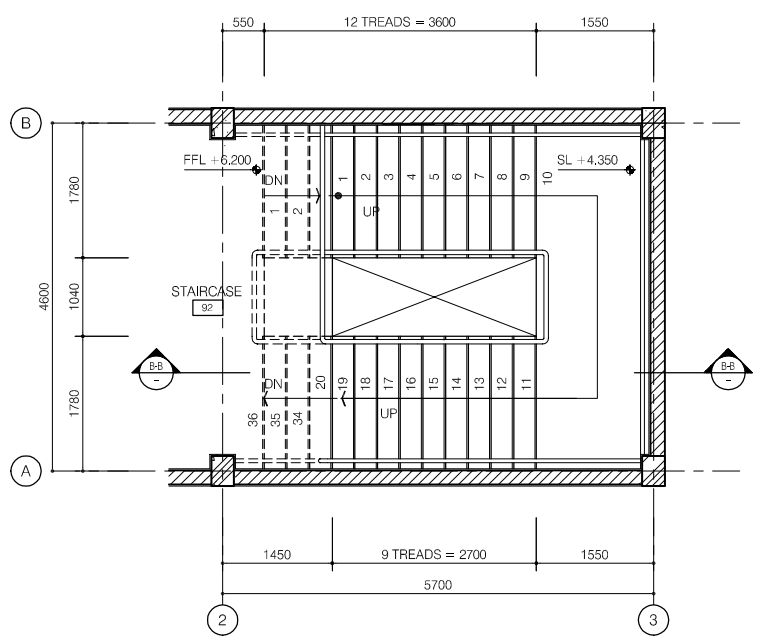


DETAIL B

SCALE: 1/5

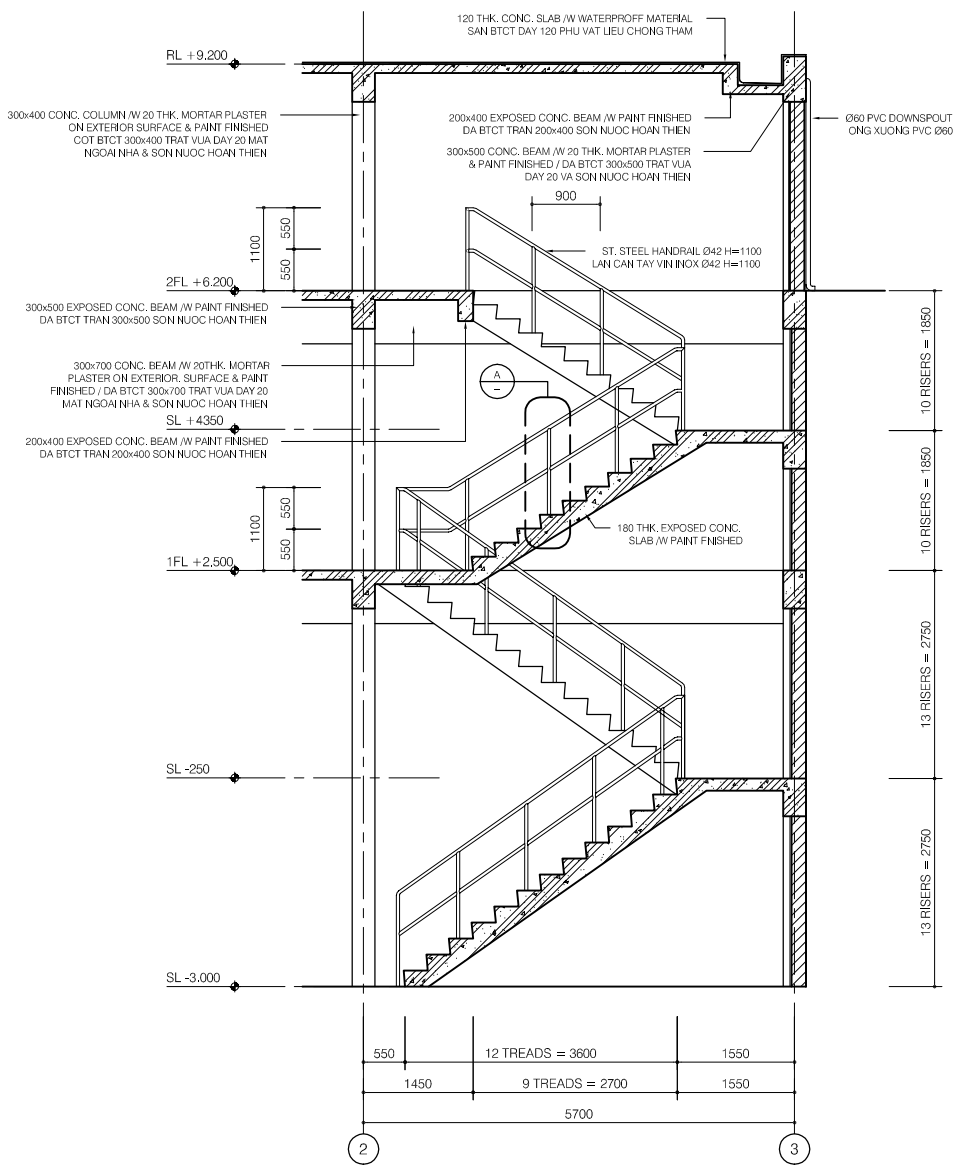
DETAIL A

SCALE: 1/20



FLOOR PLAN (S01)

SCALE: 1/50

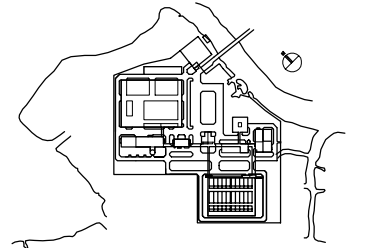


SECTION B-B

SCALE: 1/50

LEGEND

- 190mm THK. BRICK WALL, 20THK CEM./SAND RENDERING ON SURFACE / TUONG GACH DAY 190mm, TRAT VUA DAY 20 MOI MAT
- 90mm THK. BRICK WALL, 20THK CEM./SAND RENDERING ON SURFACE / TUONG GACH DAY 90mm, TRAT VUA DAY 20 MOI MAT



NO.	DATE	DESCRIPTIONS	BY	APRO.

REVISIONS

PROJECT MANAGEMENT UNIT FOR
HO CHI MINH CITY
WATER ENVIRONMENT IMPROVEMENT

THE DETAILED DESIGN STUDY ON HO CHI MINH CITY
WATER ENVIRONMENT IMPROVEMENT PROJECT
IN THE SOCIALIST REPUBLIC OF VIET NAM

PACKAGE E
WASTEWATER TREATMENT PLANT

**STAIRCASE A
DETAILS**

SCALE : AS SHOWN

JICA JAPAN INTERNATIONAL COOPERATION AGENCY (JICA)

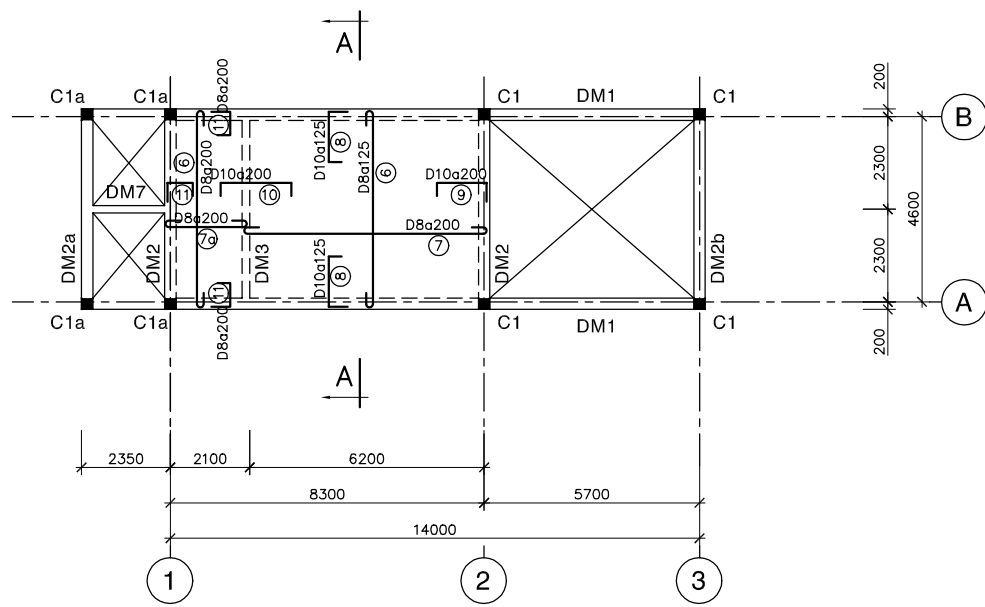
PACIFIC CONSULTANTS INTERNATIONAL

DESIGNED
KIKUTA HIROSHI

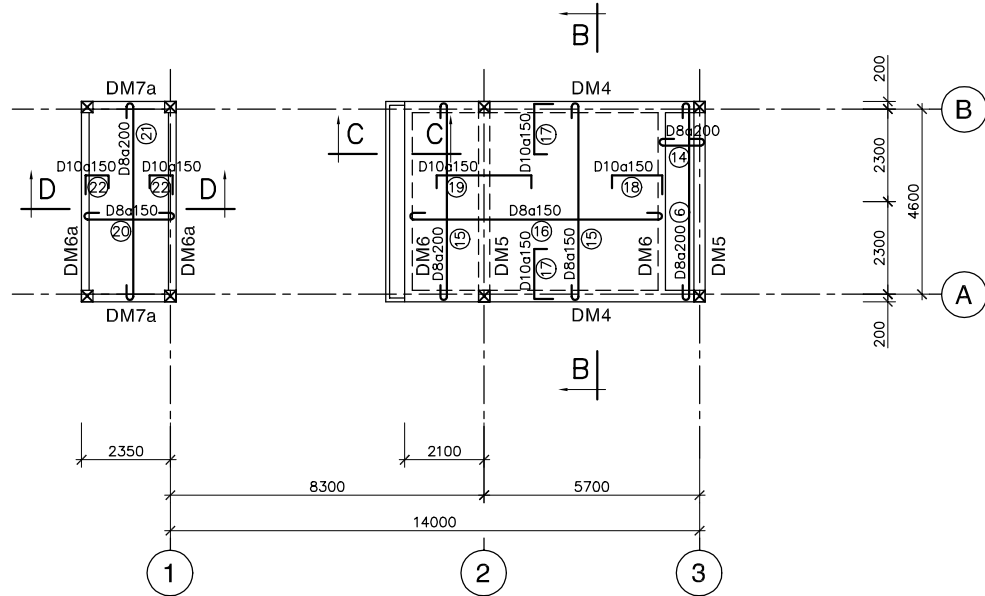
CHECKED
KONDO MASAMI

DATE : JUNE 2001

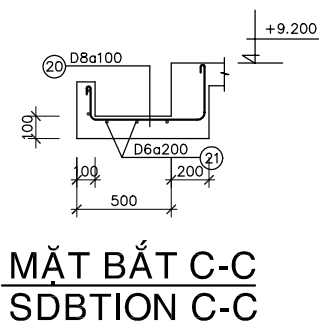
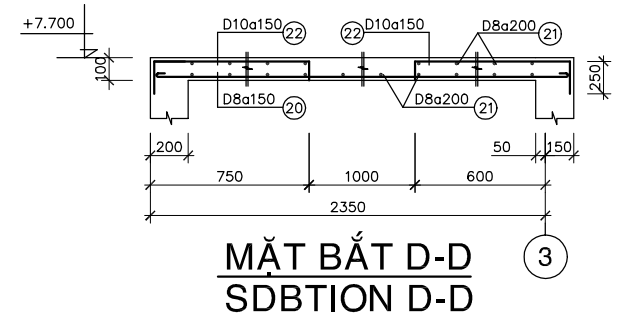
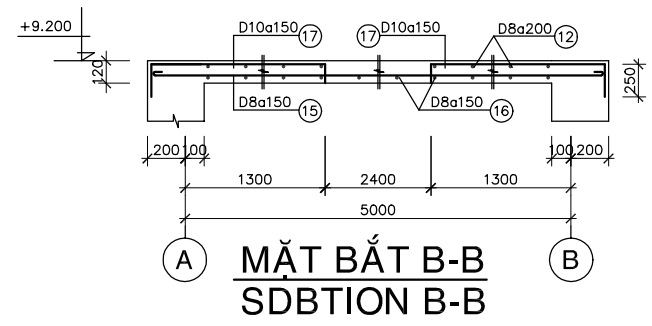
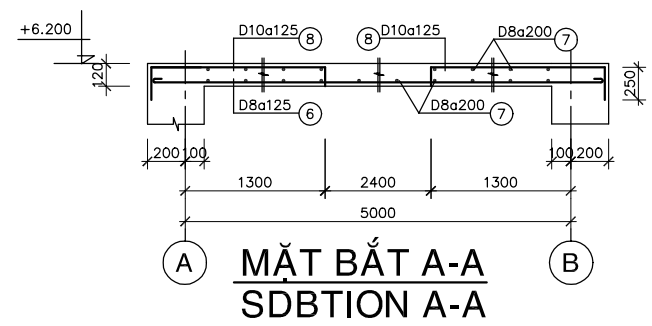
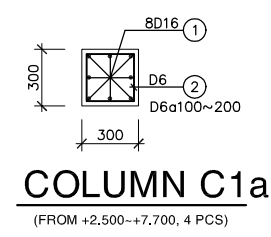
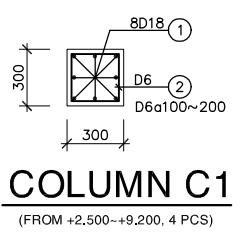
DWG. No. PE-WWTP-306-22



MẶT BẰNG DẦM & SÀN LẦU 2
PLAN OF 2nd FLOOR SLAB & BEAMS (+6.200)



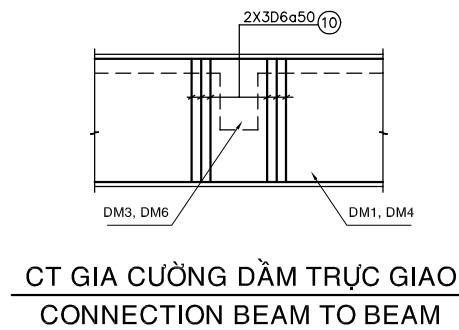
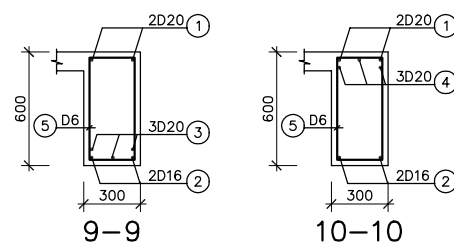
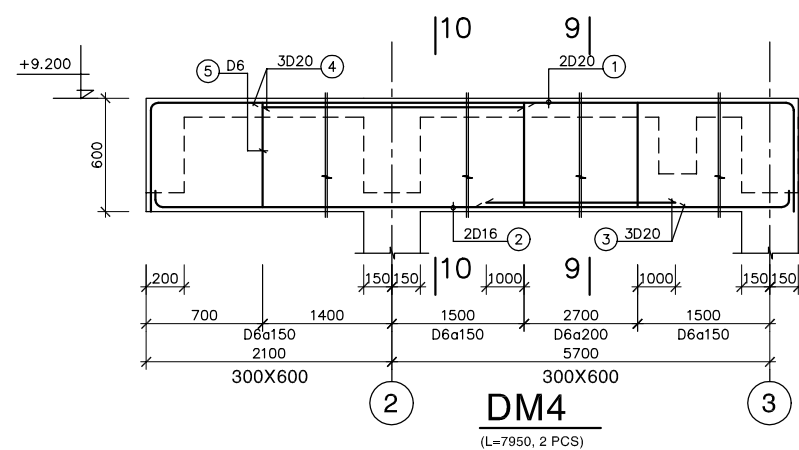
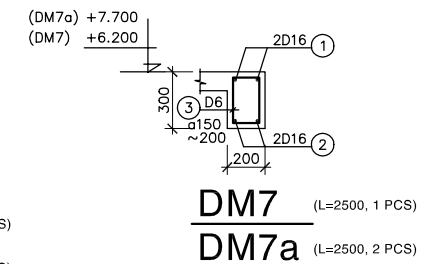
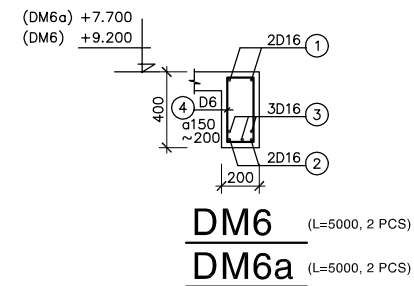
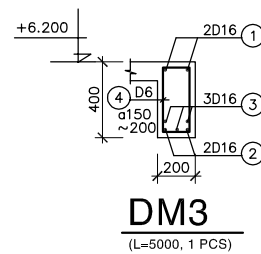
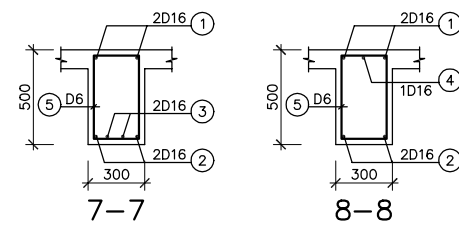
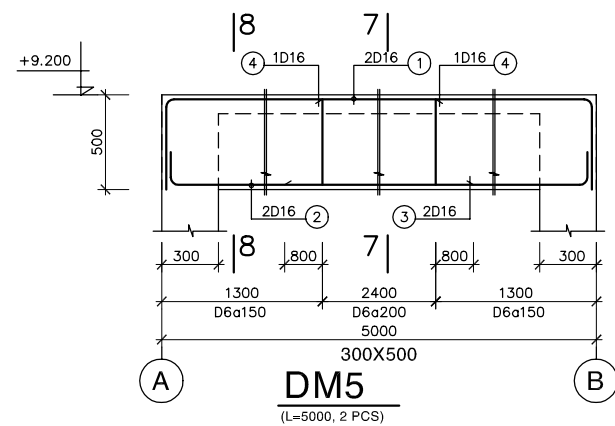
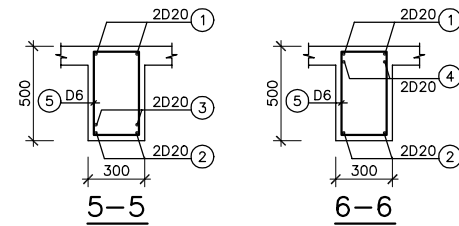
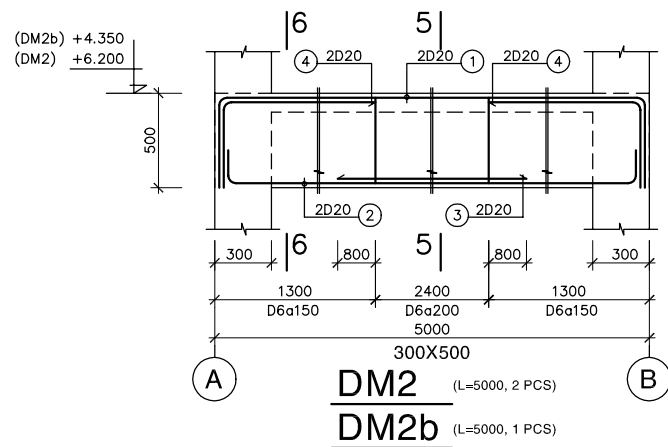
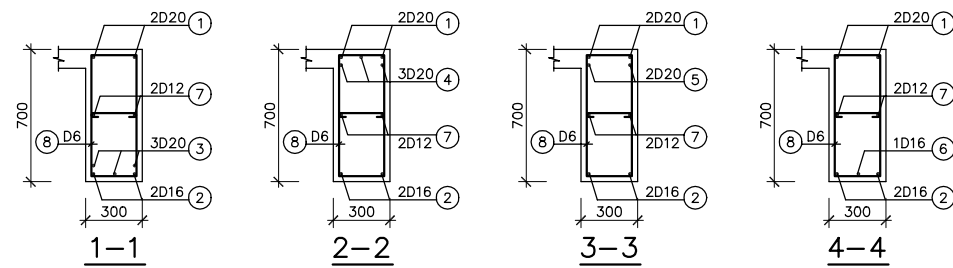
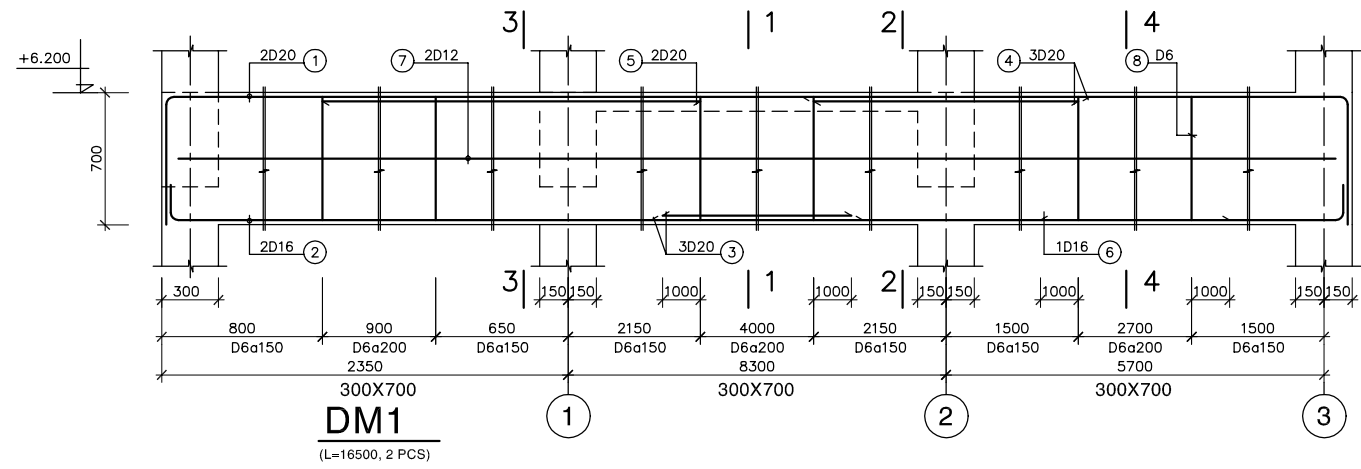
MẶT BẰNG DẦM & SÀN MÁI
PLAN OF ROOF SLAB & BEAMS (+7.700 & +9.200)



GHI CHÚ:
 - BÊ TÔNG LÓT ĐÁ 40x60, MÁC 100
 - BÊ TÔNG ĐÁ 10x20, MÁC 300
 - CỐT THÉP Ra=2000 Kg/cm²

NOTE :
 - LEAN CONCRETE STONE 40x60, GRADE 100
 - CONCRETE STONE 10x20, GRADE 300
 - REINFORCEMENT Ra=2000 Kg/cm²

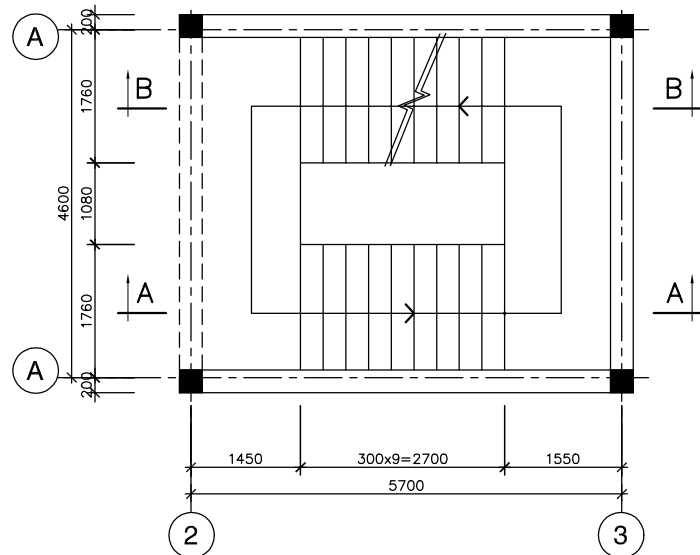
NO.	DATE	DESCRIPTIONS	BY	APRO.
REVISIONS				
PROJECT MANAGEMENT UNIT FOR HO CHI MINH CITY WATER ENVIRONMENT IMPROVEMENT				
THE DETAILED DESIGN STUDY ON HO CHI MINH CITY WATER ENVIRONMENT IMPROVEMENT PROJECT IN THE SOCIALIST REPUBLIC OF VIET NAM				
PACKAGE E WASTEWATER TREATMENT PLANT				
STAIRCASE A PLAN & DETAIL OF 2nd FLOOR & ROOF SLAB, BEAMS, COLUMNS				
SCALE : N.T.S.				
JICA JAPAN INTERNATIONAL COOPERATION AGENCY (JICA)				
PACIFIC CONSULTANTS INTERNATIONAL				
DESIGNED KIKUTA HIROSHI	CHECKED KONDO MASAMI			
DATE : JUNE 2001	DWG. No. PE-WWTP-306-23			



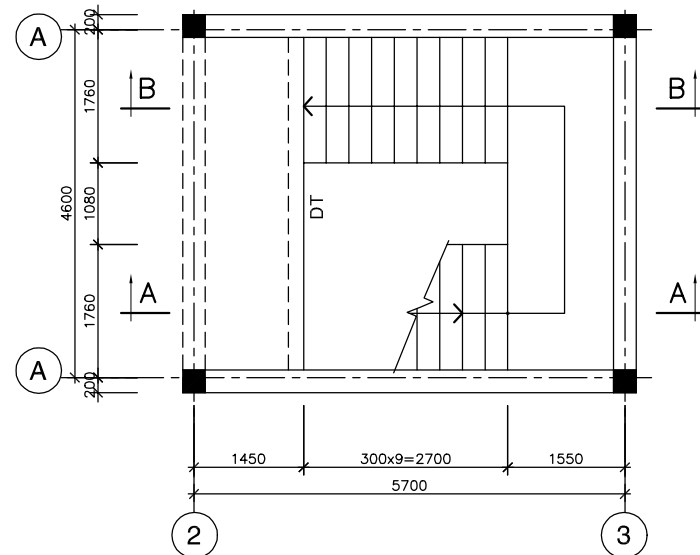
GHI CHÚ:
 - BÊ TÔNG LỚT ĐÁ 40x60, MÁC 100
 - BÊ TÔNG ĐÁ 10x20, MÁC 300
 - CỐT THÉP $R_a=2000$ Kg/cm²

NOTE:
 - LEAN CONCRETE STONE 40x60, GRADE 100
 - CONCRETE STONE 10x20, GRADE 300
 - REINFORCEMENT $R_a=2000$ Kg/cm²

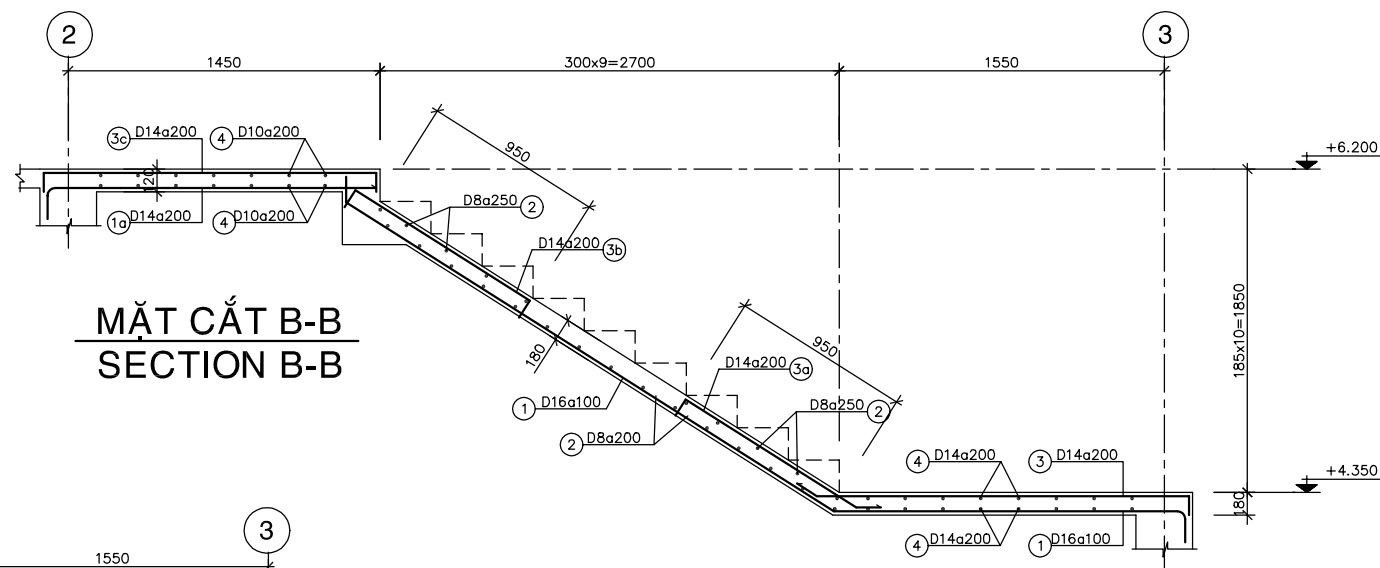
NO.	DATE	DESCRIPTIONS	BY	APPRO.
REVISIONS				
PROJECT MANAGEMENT UNIT FOR HO CHI MINH CITY WATER ENVIRONMENT IMPROVEMENT				
THE DETAILED DESIGN STUDY ON HO CHI MINH CITY WATER ENVIRONMENT IMPROVEMENT PROJECT IN THE SOCIALIST REPUBLIC OF VIET NAM				
PACKAGE E WASTEWATER TREATMENT PLANT				
STAIRCASE A DETAIL OF 2nd FLOOR & ROOF BEAMS				
SCALE : N.T.S.				
JAPAN INTERNATIONAL COOPERATION AGENCY (JICA)				
PACIFIC CONSULTANTS INTERNATIONAL				
DESIGNED KIKUTA HIROSHI		CHECKED KONDO MASAMI		
DATE : JUNE 2001		DWG. No. PE-WWTP-306-24		



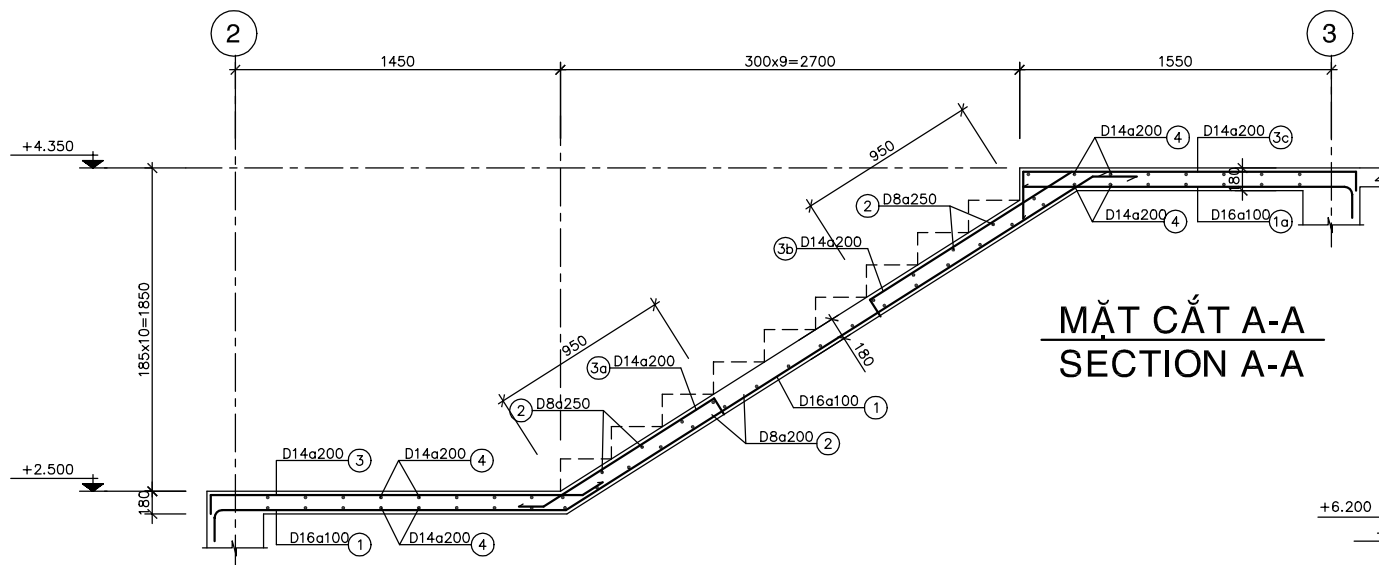
MẶT BẰNG CẦU THANG LẦU
PLAN OF 1st FLOOR STAIRCASE



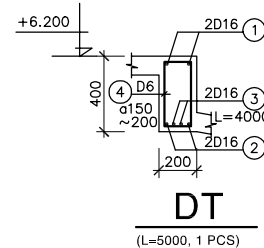
MẶT BẰNG CẦU THANG Mái
PLAN OF ROOF FLOOR STAIRCASE



MẶT CẮT B-B
SECTION B-B



MẶT CẮT A-A
SECTION A-A



DT
(L=5000, 1 PCS)

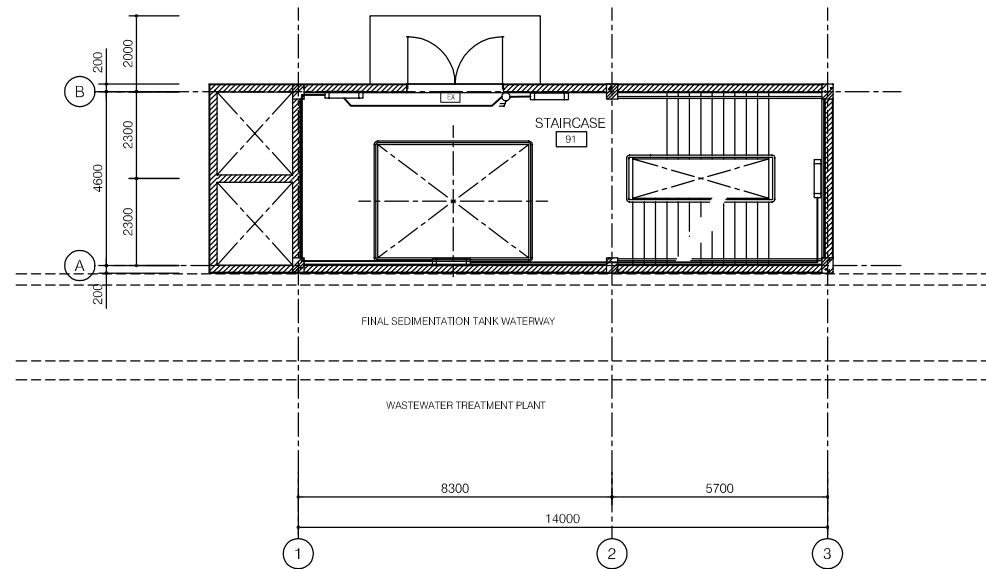
GHI CHÚ:

- BÊ TÔNG LỚT ĐÁ 40X60, MÁC 100
- BÊ TÔNG ĐÁ 10X20, MÁC 300
- CỐT THÉP Ra=2000 Kg/cm²

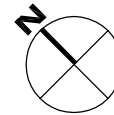
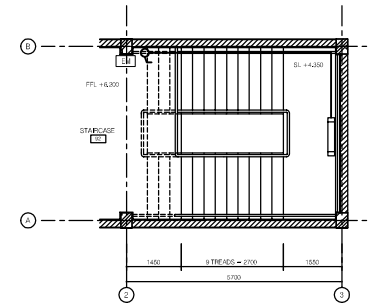
NOTE :

- LEAN CONCRETE STONE 40x60, GRADE 100
- CONCRETE STONE 10x20, GRADE 300
- REINFORCEMENT Ra=2000 Kg/cm²

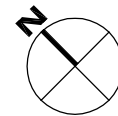
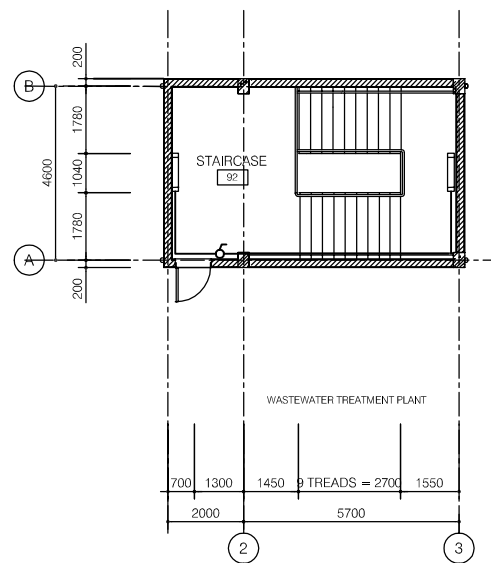
NO.	DATE	DESCRIPTIONS	BY	APRO.
REVISIONS				
PROJECT MANAGEMENT UNIT FOR HO CHI MINH CITY WATER ENVIRONMENT IMPROVEMENT				
THE DETAILED DESIGN STUDY ON HO CHI MINH CITY WATER ENVIRONMENT IMPROVEMENT PROJECT IN THE SOCIALIST REPUBLIC OF VIET NAM				
PACKAGE E WASTEWATER TREATMENT PLANT				
STAIRCASE A PLAN & DETAIL OF STAIRCASE				
SCALE : N.T.S.				
JICA JAPAN INTERNATIONAL COOPERATION AGENCY (JICA)				
PACIFIC CONSULTANTS INTERNATIONAL				
DESIGNED KIKUTA HIROSHI	CHECKED KONDO MASAMI			
DATE : JUNE 2001	DWG. No. PE-WWTP-306-25			



FIRST FLOOR PLAN
SCALE 1/100



UNDERGROUND FLOOR PLAN
SCALE 1/100

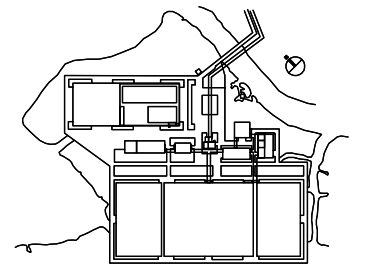


SECOND FLOOR PLAN
SCALE 1/100

- MOISTURE & RAINPROOF LIGHTING FIXTURES, STEEL HOUSING, OPAL ACRYLIC COVER, 2x36W, IP65 TYPE
- EMERGENCY LIGHT; SEALED, RECHARGEABLE Ni-Cd BATTERIES, AUTOMATIC SWITCHING
AUTOMATIC RECHARGER, INSPECTION SWITCH, YEAR INDICATOR, RECHARGING MONITOR, 1x18W
- EXIT SIGN LUMINAIRE(S) (CEILING WALL MOUNTED TYPE); SEALED, RECHARGEABLE Ni-Cd BATTERIES, AUTOMATIC SWITCHING
POWER ENOUGH TO KEEP THE LIGHT ON FOR AT LEAST 30MIN., SINGLE FACE
AUTOMATIC RECHARGER, INSPECTION SWITCH, YEAR INDICATOR, RECHARGING MONITOR, 1x18W
- SINGLE SWITCH, 1 WAY, 10A
- SINGLE SWITCH, 2 WAY, 10A
- DUPLEX SOCKET OUTLET, 2x3-PIN : 16A
(COVERED PROOF IN MOISTURE AREA)

LEGEND

- ⊗ 400W HIGH PRESSURE SODIUM INDUSTRIAL HIGH BAY LUMINAIRE
- 2x36W RECESSED FLOURESCENT
- ▬ 2x36W FLOURESCENT BATTEN (CEILING OR WALL MOUNTED)
- 1x40W DOWNLIGHT (in VIC)
- 100W OUTDOOR LUMINAIRE, IP 56
- 1x40W DOWNLIGHT (in VIC)
- ▬ 1x18W FLOURESCENT BATTEN, IP65
- ▬ 2x36W FLOURESCENT BATTEN, IP65
- 2x10W NON-MAINTAINED EXIT LIGHT
- 16A DUPLEX SOCKET OUTLET
- 16A DUPLEX SOCKET OUTLET FOR A/C UNIT
- 1 WAY SINGLE SWITCH
- DISTRIBUTION BOARD
- DL : DOOR LOUVER
- EAF : EXHAUST AIR FAN

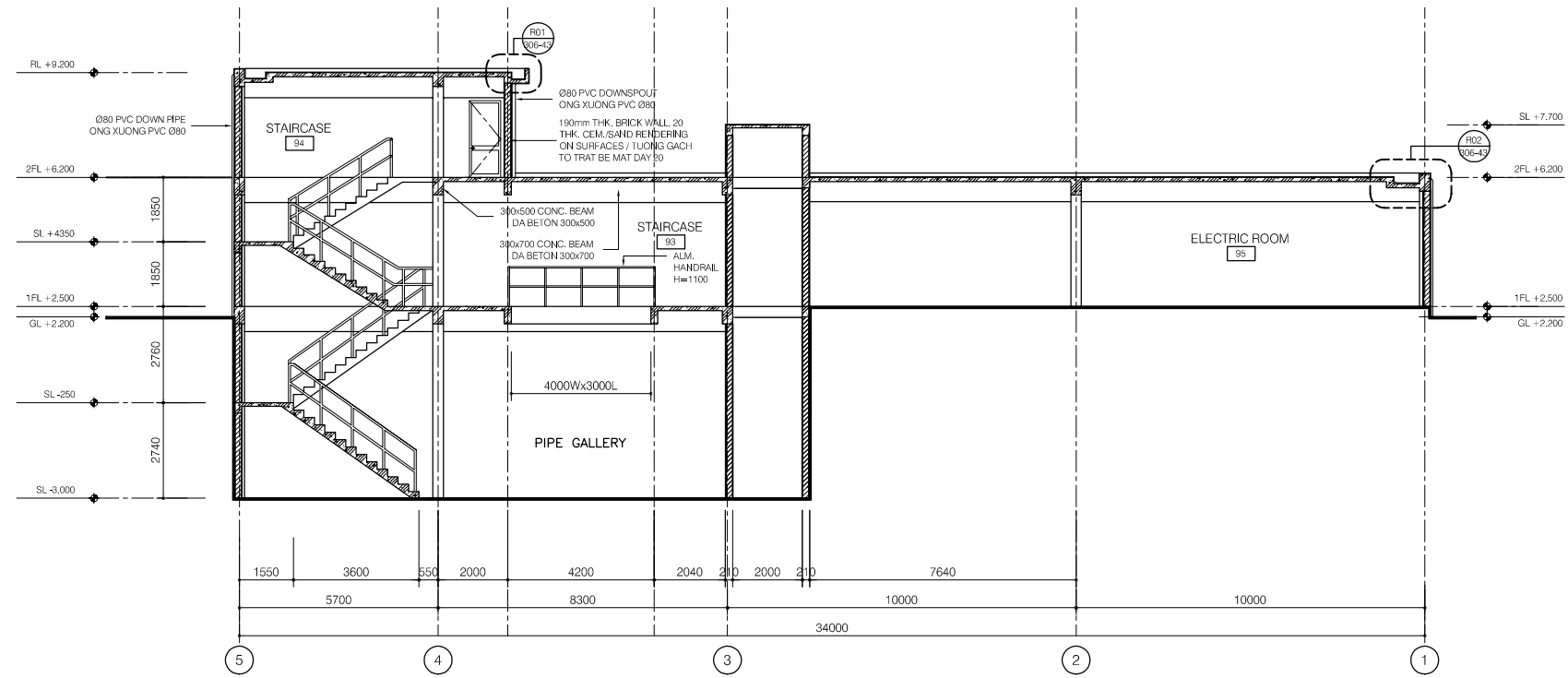


NO.	DATE	DESCRIPTIONS	BY	APRO.

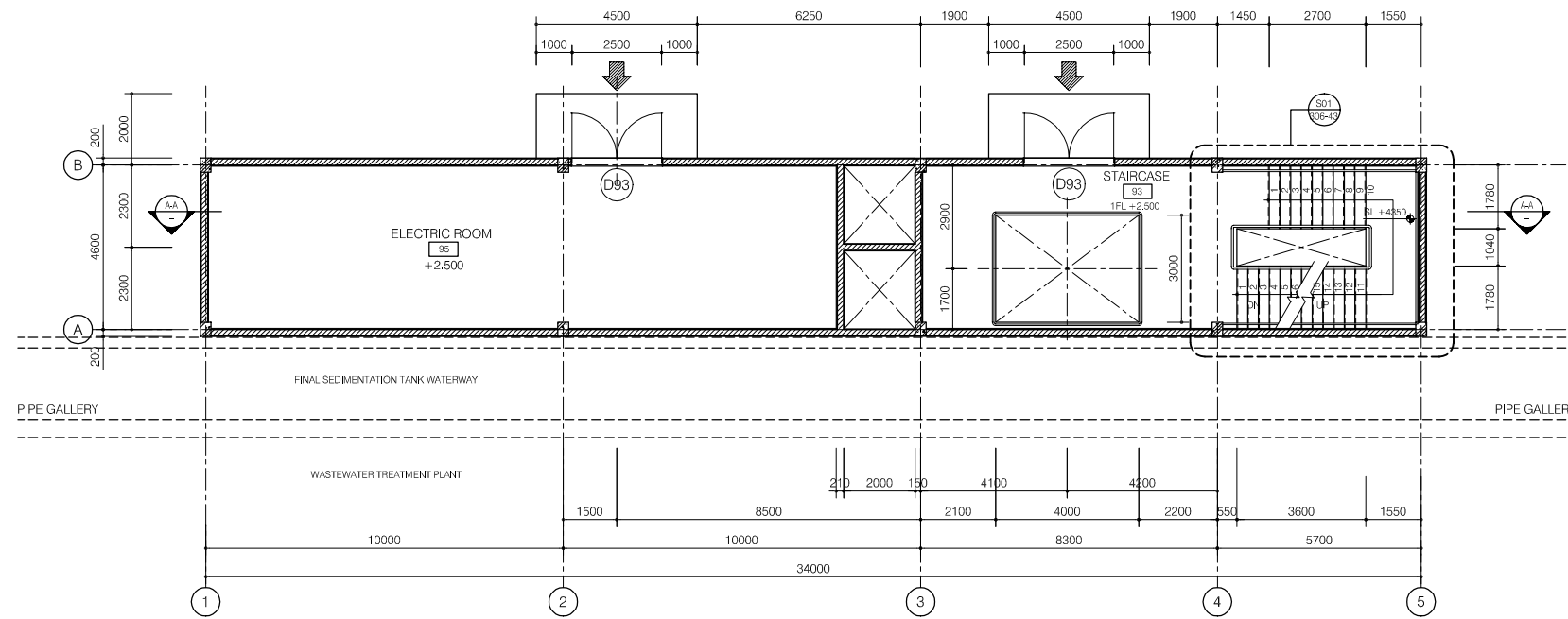
REVISIONS				
PROJECT MANAGEMENT UNIT FOR HO CHI MINH CITY WATER ENVIRONMENT IMPROVEMENT				
THE DETAILED DESIGN STUDY ON HO CHI MINH CITY WATER ENVIRONMENT IMPROVEMENT PROJECT IN THE SOCIALIST REPUBLIC OF VIET NAM				
PACKAGE E WASTEWATER TREATMENT PLANT STAIRCASE A ELECTRICAL PLAN				

SCALE : 1/100	
JAPAN INTERNATIONAL COOPERATION AGENCY (JICA)	
PACIFIC CONSULTANTS INTERNATIONAL	
DESIGNED KIKUTA HIROSHI	CHECKED KONDO MASAMI
DATE : JUNE 2001	DWG. No. PE-WWTP-306-26

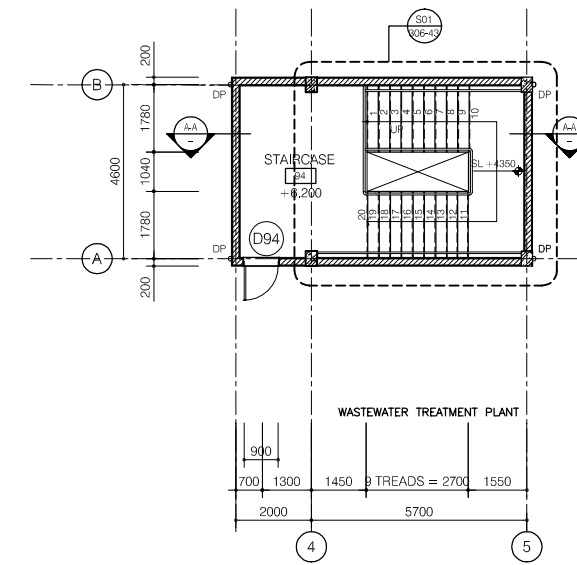
Staircase B



SECTION A-A



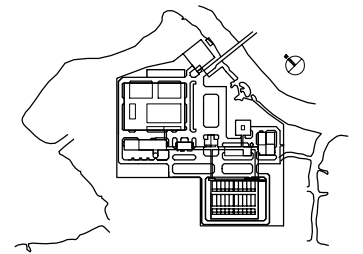
FIRST FLOOR PLAN



SECOND FLOOR PLAN

LEGEND

- 190mm THK. BRICK WALL, 20THK CEM./SAND RENDERING ON SURFACE / TUONG GACH DAY 190mm, TRAT VUA DAY 20 MOI MAT
- 90mm THK. BRICK WALL, 20THK CEM./SAND RENDERING ON SURFACE / TUONG GACH DAY 90mm, TRAT VUA DAY 20 MOI MAT



NO.	DATE	DESCRIPTIONS	BY	APRO.

REVISIONS

PROJECT MANAGEMENT UNIT FOR
HO CHI MINH CITY
WATER ENVIRONMENT IMPROVEMENT

THE DETAILED DESIGN STUDY ON HO CHI MINH CITY
WATER ENVIRONMENT IMPROVEMENT PROJECT
IN THE SOCIALIST REPUBLIC OF VIET NAM

PACKAGE E
WASTEWATER TREATMENT PLANT
STAIRCASE B
PLANS, SECTION A-A

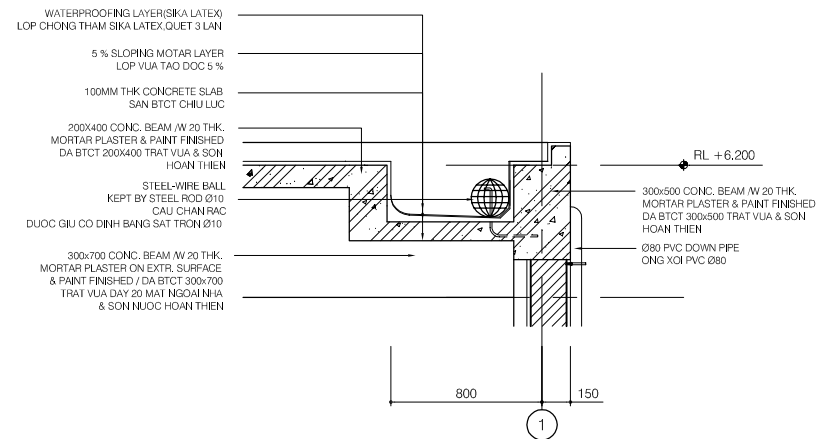
SCALE : 1/100

JAPAN INTERNATIONAL COOPERATION AGENCY (JICA)

PACIFIC CONSULTANTS INTERNATIONAL

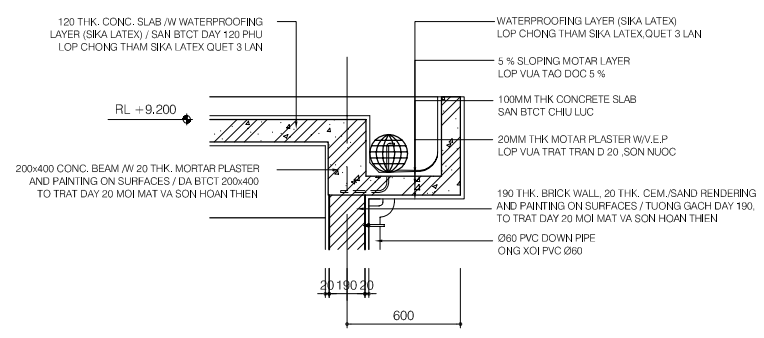
DESIGNED KIKUTA HIROSHI	CHECKED KONDO MASAMI
----------------------------	-------------------------

DATE : JUNE 2001 DWG. No. PE-WWTP-306-41



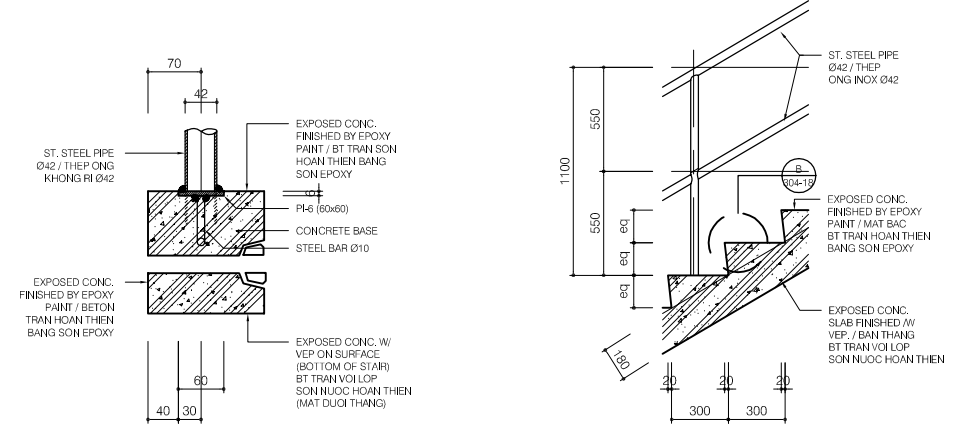
SECTION DETAIL R02

SCALE: 1/20



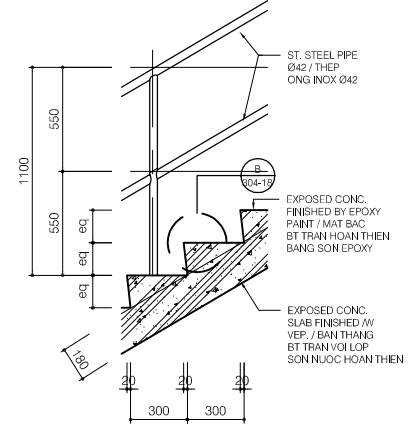
SECTION DETAIL R01

SCALE: 1/20



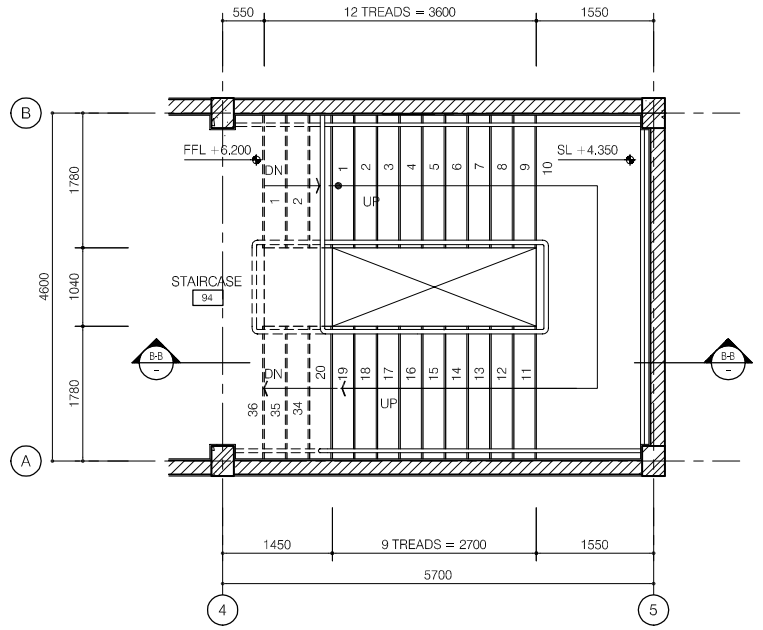
DETAIL B

SCALE: 1/5



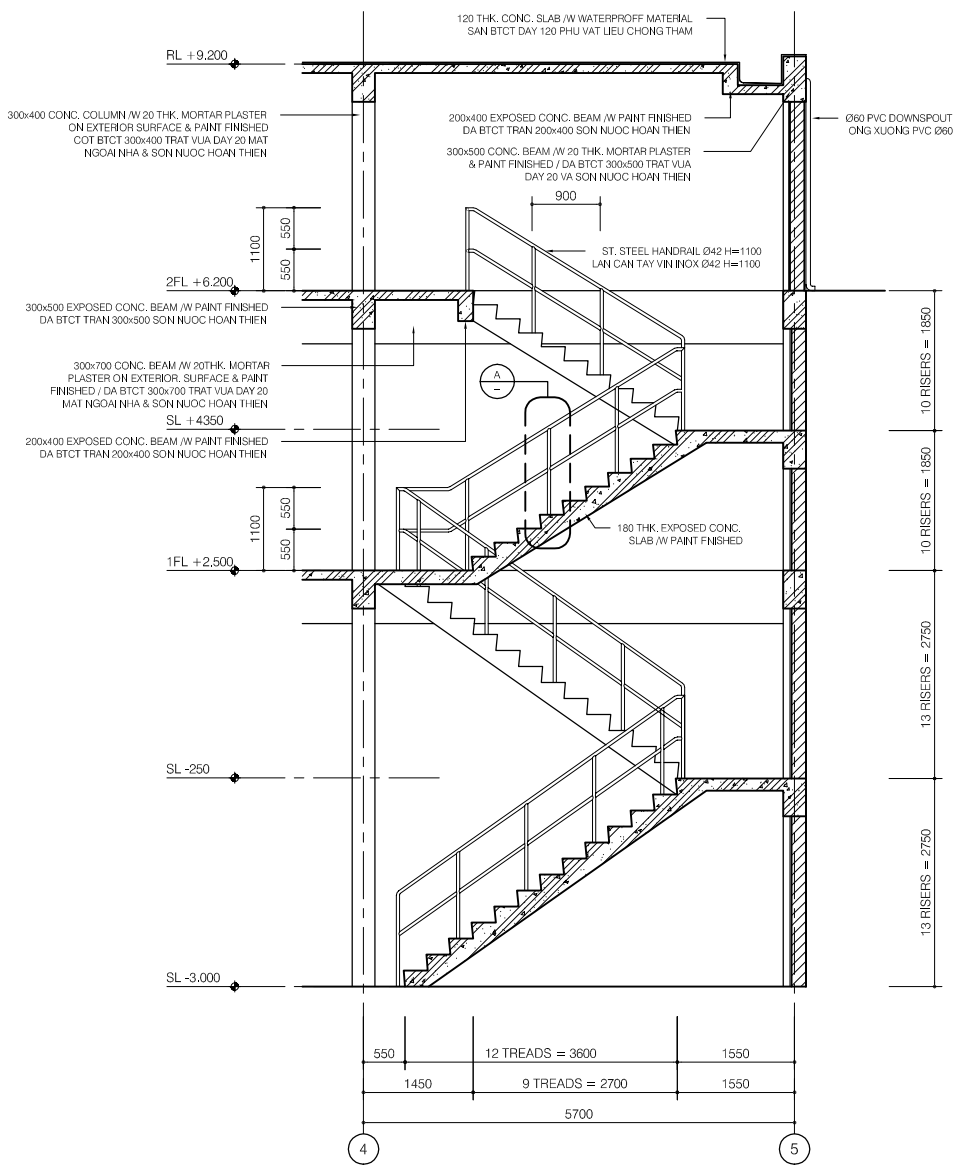
DETAIL A

SCALE: 1/20



FLOOR PLAN (S01)

SCALE: 1/50

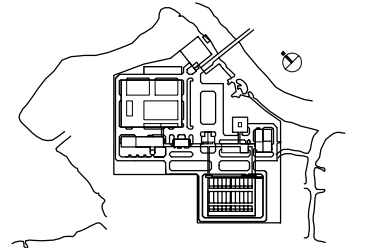


SECTION B-B

SCALE: 1/50

LEGEND

- 190mm THK. BRICK WALL, 20THK CEM./SAND RENDERING ON SURFACE / TUONG GACH DAY 190mm, TRAT VUA DAY 20 MOI MAT
- 90mm THK. BRICK WALL, 20THK CEM./SAND RENDERING ON SURFACE / TUONG GACH DAY 90mm, TRAT VUA DAY 20 MOI MAT



NO.	DATE	DESCRIPTIONS	BY	APRO.

REVISIONS

PROJECT MANAGEMENT UNIT FOR
HO CHI MINH CITY
WATER ENVIRONMENT IMPROVEMENT

THE DETAILED DESIGN STUDY ON HO CHI MINH CITY
WATER ENVIRONMENT IMPROVEMENT PROJECT
IN THE SOCIALIST REPUBLIC OF VIET NAM

PACKAGE E
WASTEWATER TREATMENT PLANT

**STAIRCASE B
DETAILS**

SCALE : AS SHOWN

JAPAN INTERNATIONAL COOPERATION AGENCY (JICA)

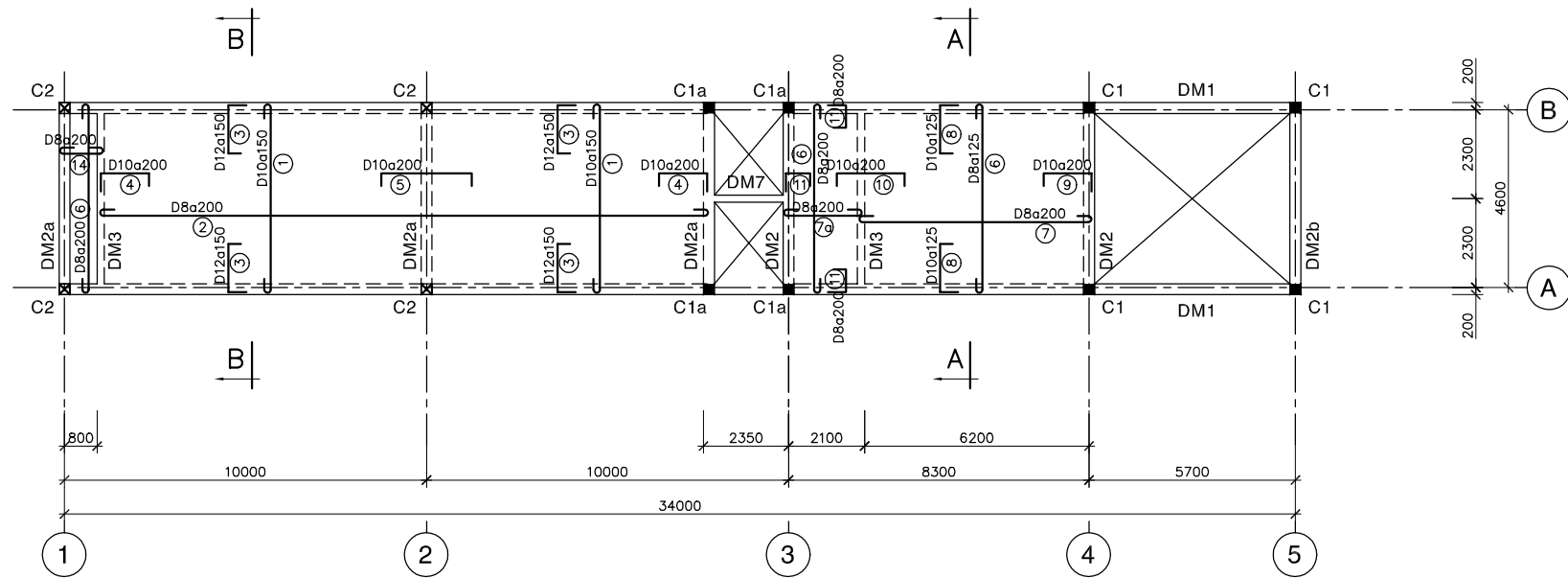
PACIFIC CONSULTANTS INTERNATIONAL

DESIGNED
KIKUTA HIROSHI

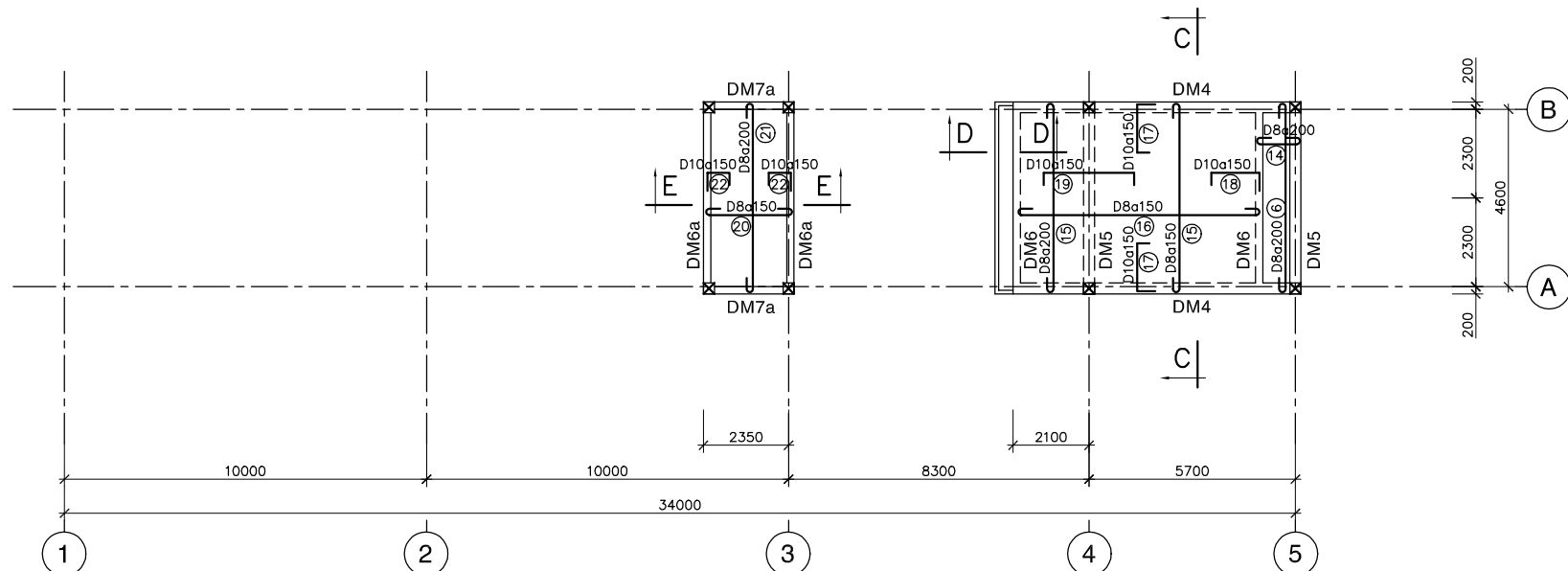
CHECKED
KONDO MASAMI

DATE : JUNE 2001

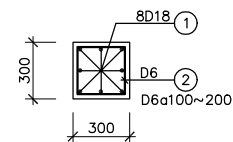
DWG. No. PE-WWTP-306-43



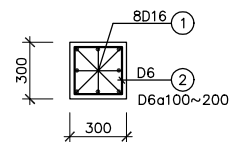
MẶT BẰNG DẦM & SÀN LẦU 2
PLAN OF 2nd FLOOR SLAB & BEAMS (+6.200)



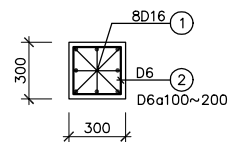
MẶT BẰNG DẦM & SÀN MÁI
PLAN OF ROOF SLAB & BEAMS (+7.700 & +9.200)



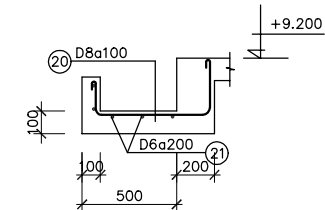
COLUMN C1
 (FROM +2.500~+9.200, 4 PCS)



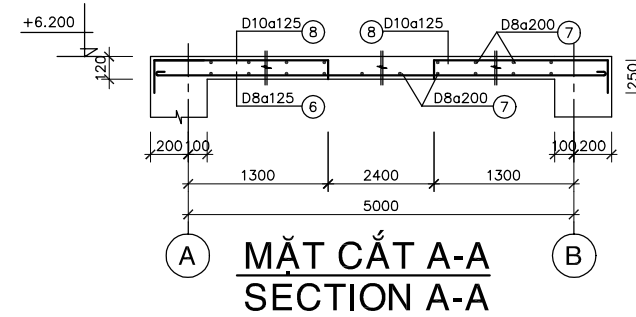
COLUMN C1a
 (FROM +2.500~+7.700, 4 PCS)



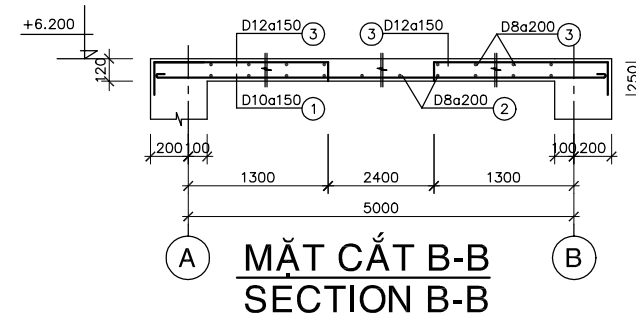
COLUMN C2
 (FROM +2.500~+6.200, 4 PCS)



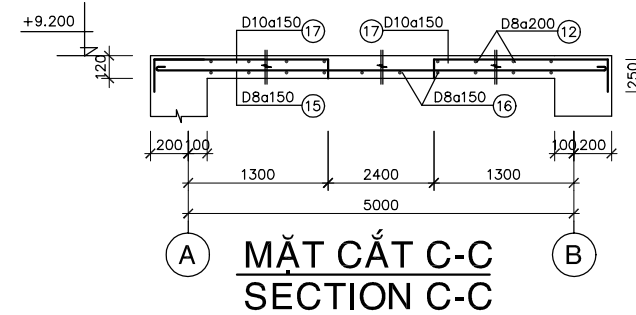
MẶT CẮT D-D
SECTION D-D



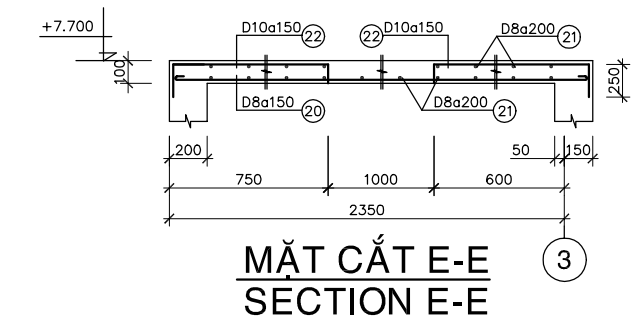
MẶT CẮT A-A
SECTION A-A



MẶT CẮT B-B
SECTION B-B



MẶT CẮT C-C
SECTION C-C



MẶT CẮT E-E
SECTION E-E

GHI CHÚ:

- BÊ TÔNG LÓT ĐÁ 40x60, MÁC 100
- BÊ TÔNG ĐÁ 10x20, MÁC 300
- CỐT THÉP Ra=2000 Kg/cm²

NOTE :

- LEAN CONCRETE STONE 40x60, GRADE 100
- CONCRETE STONE 10x20, GRADE 300
- REINFORCEMENT Ra=2000 Kg/cm²

NO.	DATE	DESCRIPTIONS	BY	APRO.

REVISIONS

PROJECT MANAGEMENT UNIT FOR
 HO CHI MINH CITY
 WATER ENVIRONMENT IMPROVEMENT

THE DETAILED DESIGN STUDY ON HO CHI MINH CITY
 WATER ENVIRONMENT IMPROVEMENT PROJECT
 IN THE SOCIALIST REPUBLIC OF VIET NAM

PACKAGE E
 WASTEWATER TREATMENT PLANT

STAIRCASE B
 PLAN & DETAIL OF 2nd FLOOR & ROOF
 SLAB, BEAMS, COLUMNS

SCALE : N.T.S.

JICA JAPAN INTERNATIONAL COOPERATION
 AGENCY (JICA)

PACIFIC CONSULTANTS INTERNATIONAL

DESIGNED
 KIKUTA HIROSHI

CHECKED
 KONDO MASAMI

DATE : JUNE 2001

DWG. No. PE-WWTP-306-44