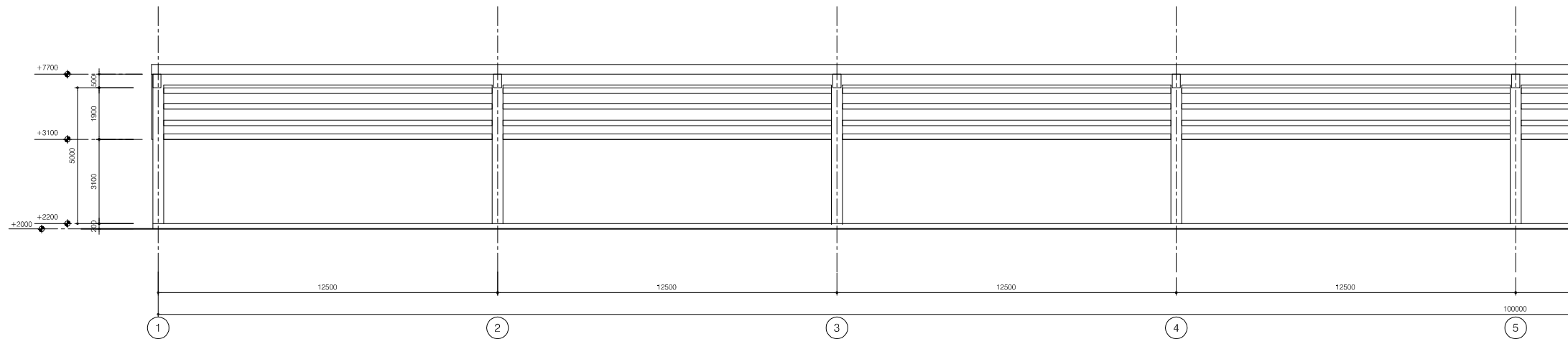
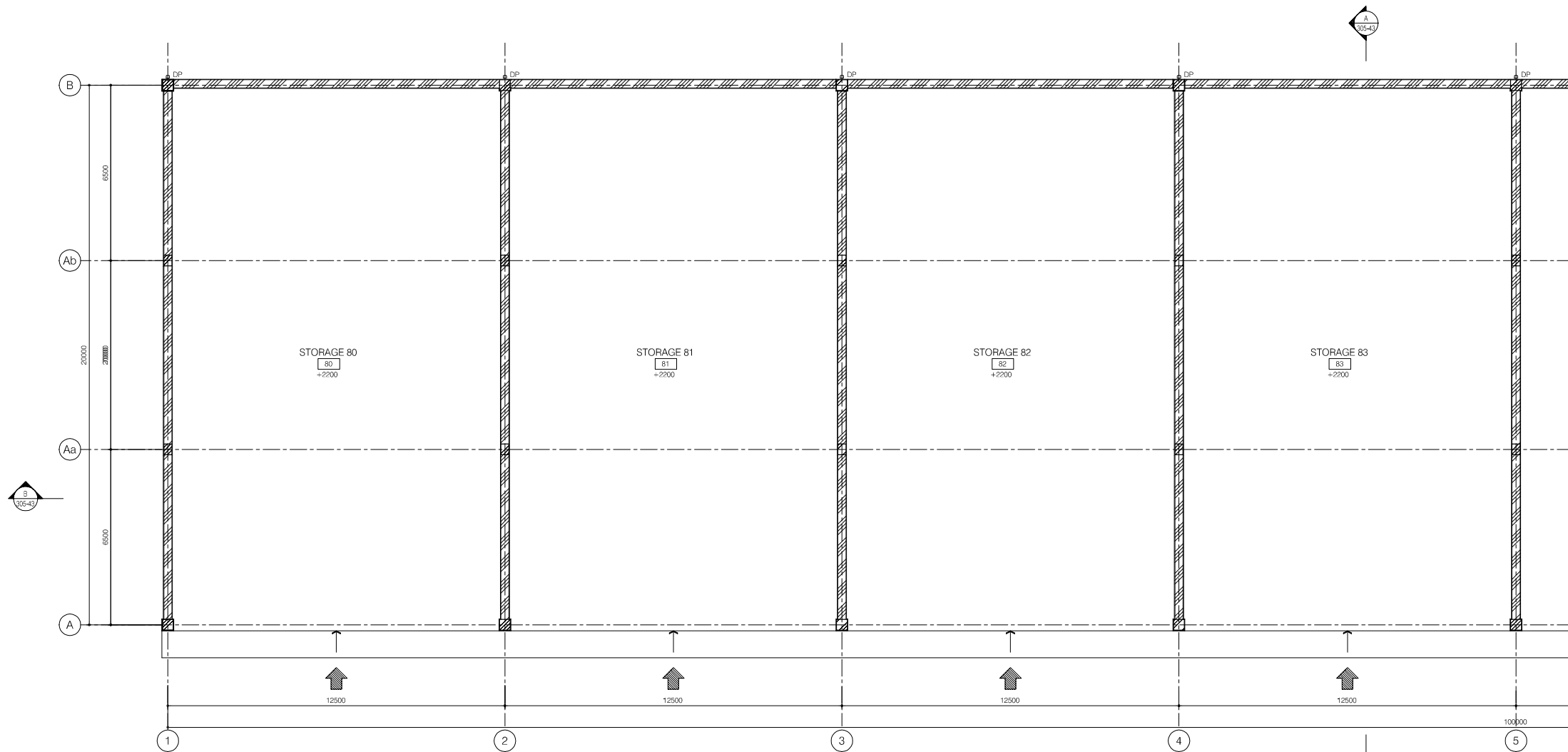


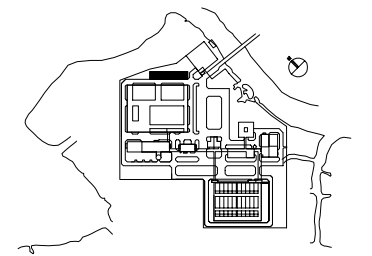
Storage vessel



PARTIAL ELEVATION LINE A (1/2)



PARTIAL FLOOR PLAN (1/2)



| NO. | DATE | DESCRIPTIONS | BY | APRO. |
|-----|------|--------------|----|-------|
| | | | | |
| | | | | |
| | | | | |
| | | | | |

REVISIONS

PROJECT MANAGEMENT UNIT FOR
HO CHI MINH CITY
WATER ENVIRONMENT IMPROVEMENT

THE DETAILED DESIGN STUDY ON HO CHI MINH CITY
WATER ENVIRONMENT IMPROVEMENT PROJECT
IN THE SOCIALIST REPUBLIC OF VIET NAM

PACKAGE E
WASTEWATER TREATMENT PLANT

STORAGE VESSEL
PARTIAL PLAN (1/2)
PARTIAL ELEVATION (1/2)

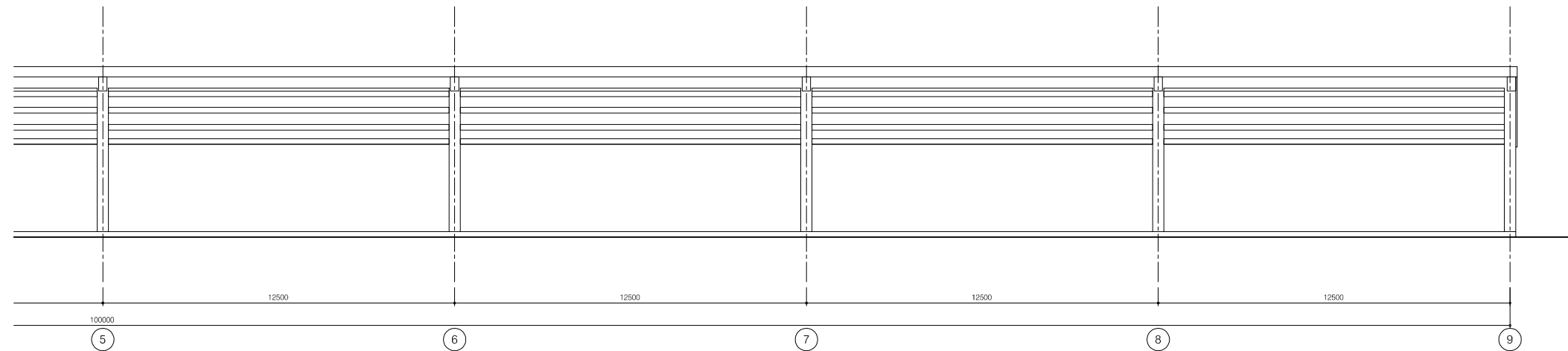
SCALE : 1/100

JAPAN INTERNATIONAL COOPERATION AGENCY (JICA)

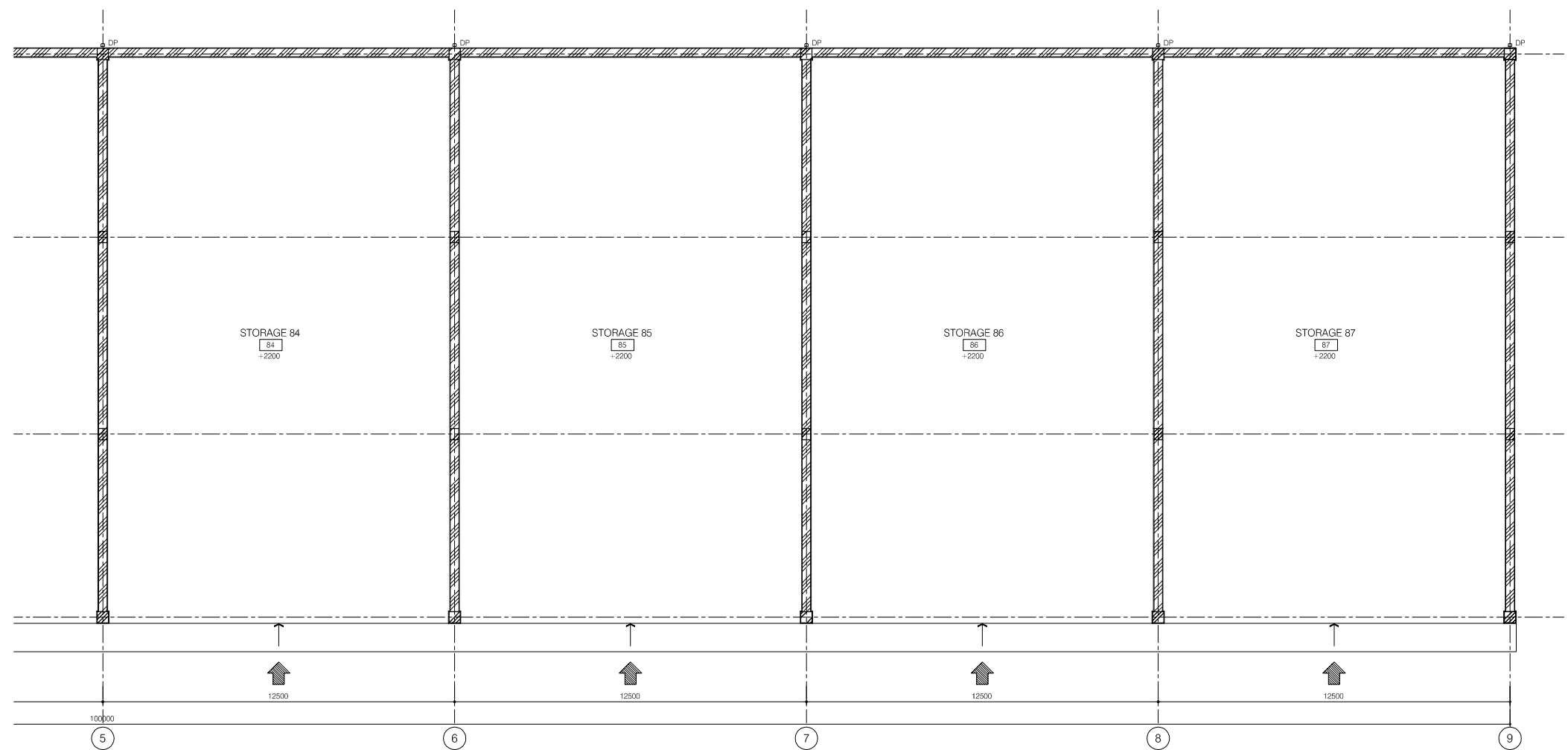
PACIFIC CONSULTANTS INTERNATIONAL

| | |
|----------------------------|-------------------------|
| DESIGNED KIKUTA HIROSHI | CHECKED KONDO MASAMI |
|----------------------------|-------------------------|

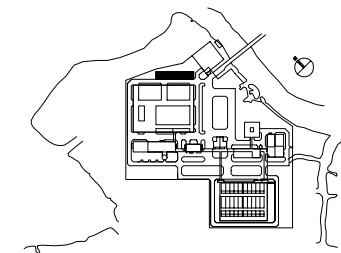
DATE : JUNE 2001 DWG. No. PE-WWTP-305-41



PARTIAL ELEVATION LINE A (2/2)



PARTIAL FLOOR PLAN (2/2)



| | | | | |
|--|--|--|--|--|
| | | | | |
| | | | | |
| | | | | |
| | | | | |
| | | | | |

| NO. | DATE | DESCRIPTIONS | BY | APRO. |
|-----|------|--------------|----|-------|
|-----|------|--------------|----|-------|

REVISIONS

PROJECT MANAGEMENT UNIT FOR
HO CHI MINH CITY
WATER ENVIRONMENT IMPROVEMENT

THE DETAILED DESIGN STUDY ON HO CHI MINH CITY
WATER ENVIRONMENT IMPROVEMENT PROJECT
IN THE SOCIALIST REPUBLIC OF VIET NAM

PACKAGE E
WASTEWATER TREATMENT PLANT

STORAGE VESSEL
PARTIAL PLAN (2/2)
PARTIAL ELEVATION (2/2)

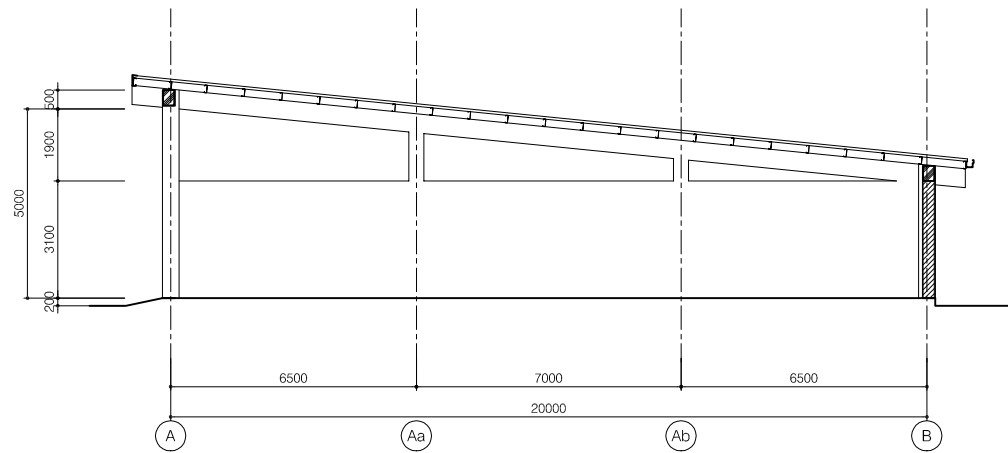
SCALE : 1/100

JAPAN INTERNATIONAL COOPERATION AGENCY (JICA)

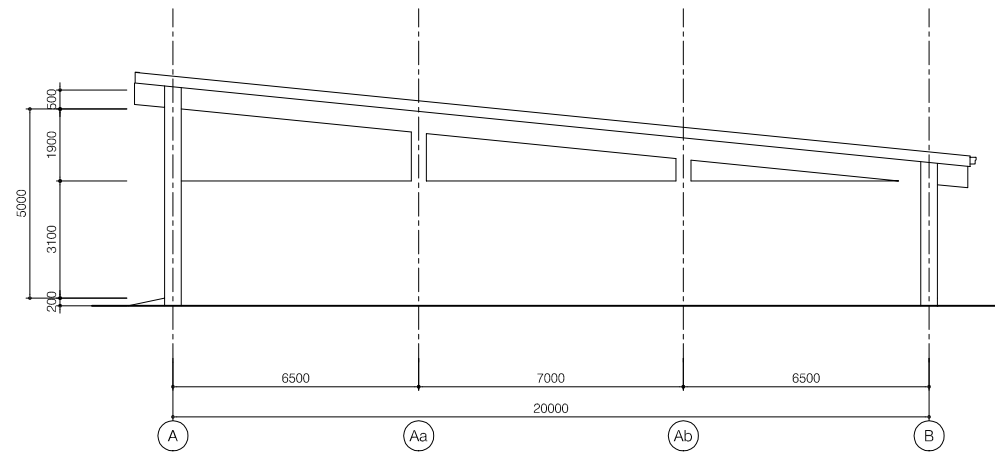
PACIFIC CONSULTANTS INTERNATIONAL

| | |
|----------------------------|-------------------------|
| DESIGNED KIKUTA HIROSHI | CHECKED KONDO MASAMI |
|----------------------------|-------------------------|

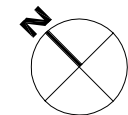
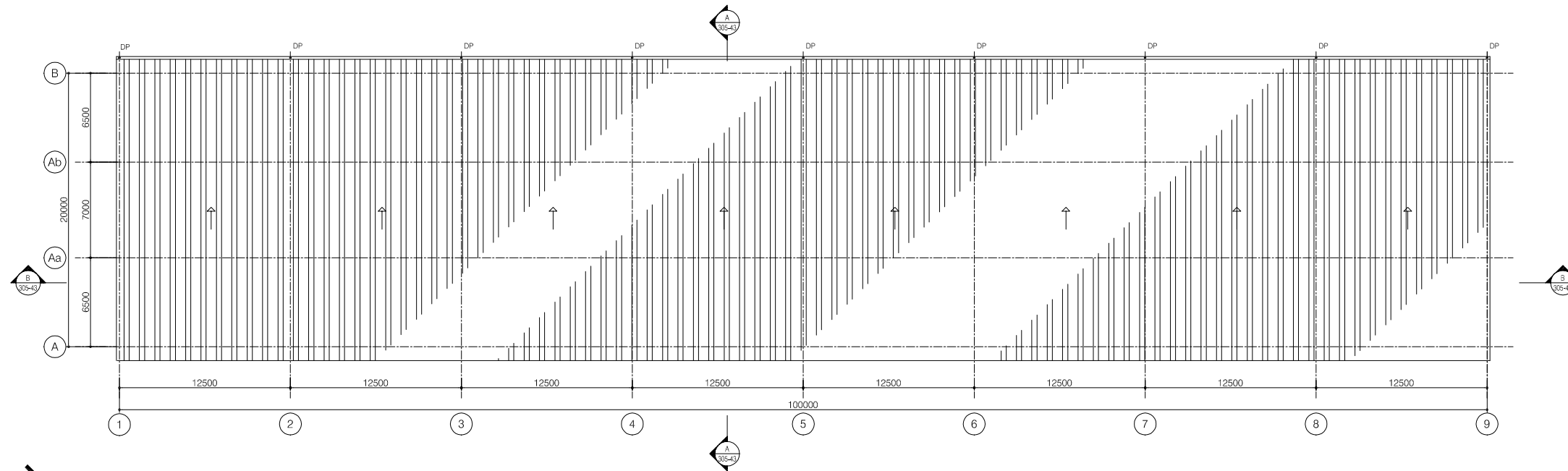
DATE : JUNE 2001 DWG. No. PE-WWTP-305-42



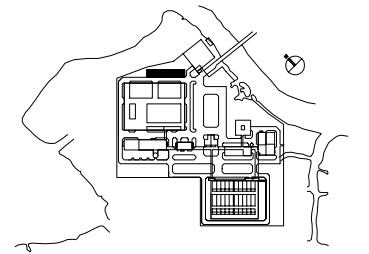
CROSS SECTION A-A





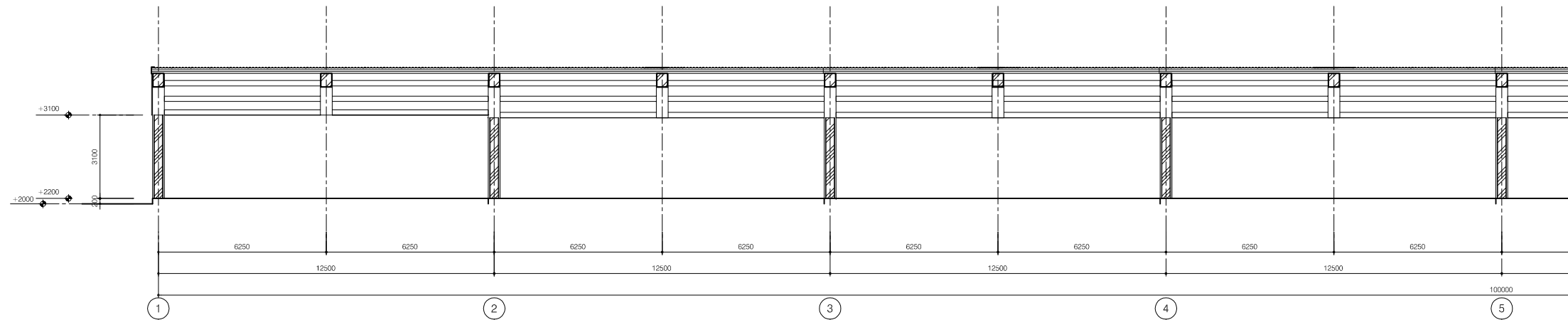
ELEVATION LINE 9



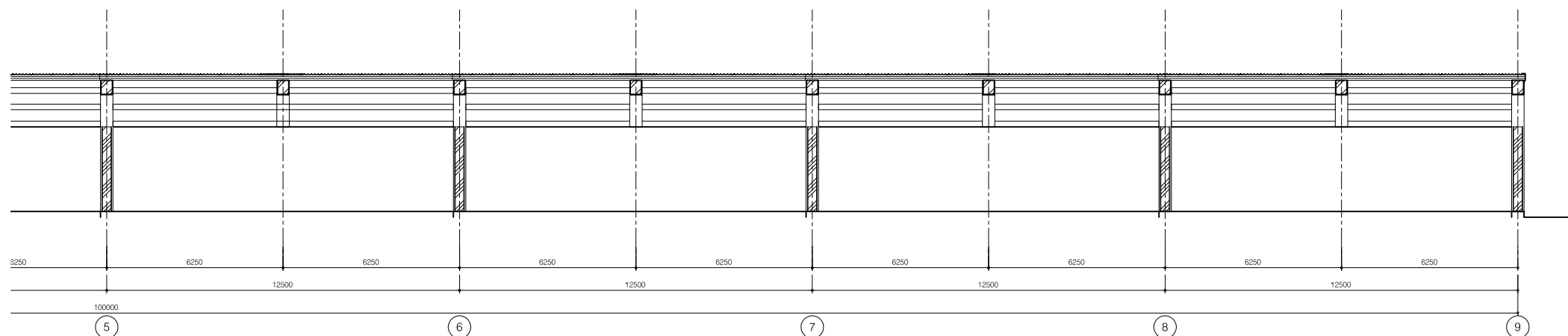
ROOF PLAN
SCALE:1/200



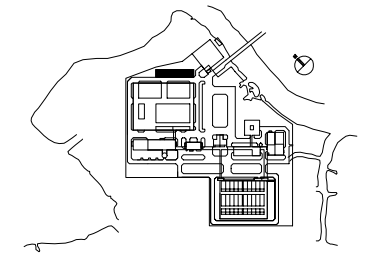
| NO. | DATE | DESCRIPTIONS | BY | APPRO. |
|---|------|-------------------------|----|--------|
| REVISIONS | | | | |
| PROJECT MANAGEMENT UNIT FOR HO CHI MINH CITY WATER ENVIRONMENT IMPROVEMENT | | | | |
| THE DETAILED DESIGN STUDY ON HO CHI MINH CITY WATER ENVIRONMENT IMPROVEMENT PROJECT IN THE SOCIALIST REPUBLIC OF VIET NAM | | | | |
| PACKAGE E WASTEWATER TREATMENT PLANT STORAGE VESSEL CROSS SECTION A-A, ELEVATIONLINE 9 | | | | |
| SCALE : 1/100 | | | | |
|  JAPAN INTERNATIONAL COOPERATION AGENCY (JICA) | | | | |
|  PACIFIC CONSULTANTS INTERNATIONAL | | | | |
| DESIGNED KIKUTA HIROSHI | | CHECKED KONDO MASAMI | | |
| DATE : JUNE 2001 | | DWG. No. PE-WWTP-305-43 | | |



PARTIAL LONGITUDINAL SECTION B-B (1/2)



PARTIAL LONGITUDINAL SECTION B-B (2/2)



| | | | | |
|--|--|--|--|--|
| | | | | |
| | | | | |
| | | | | |
| | | | | |
| | | | | |

| NO. | DATE | DESCRIPTIONS | BY | APRO. |
|-----|------|--------------|----|-------|
|-----|------|--------------|----|-------|

| REVISIONS | | | | |
|-----------|--|--|--|--|
| | | | | |

PROJECT MANAGEMENT UNIT FOR
HO CHI MINH CITY
WATER ENVIRONMENT IMPROVEMENT

THE DETAILED DESIGN STUDY ON HO CHI MINH CITY
WATER ENVIRONMENT IMPROVEMENT PROJECT
IN THE SOCIALIST REPUBLIC OF VIET NAM

PACKAGE E
WASTEWATER TREATMENT PLANT

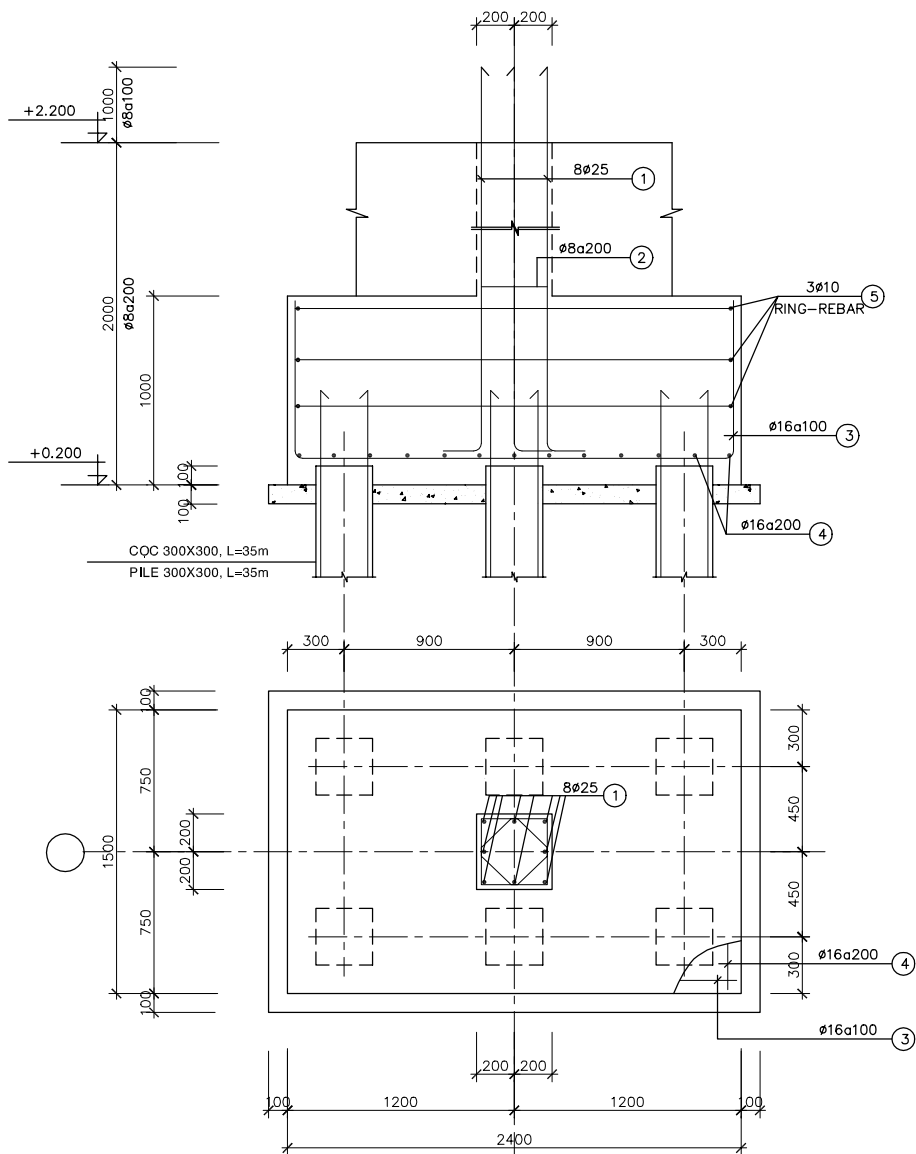
STORAGE VESSEL
LONGITUDINAL SECTION B-B

SCALE : 1/100

JICA JAPAN INTERNATIONAL COOPERATION
AGENCY (JICA)

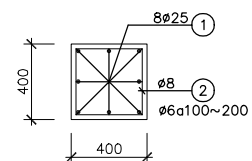
PACIFIC CONSULTANTS INTERNATIONAL

| | |
|----------------------------|-------------------------|
| DESIGNED KIKUTA HIROSHI | CHECKED KONDO MASAMI |
| DATE : JUNE 2001 | DWG. No. PE-WWTP-305-44 |

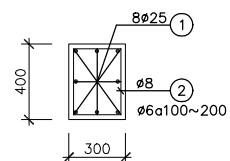


M1
(1500X2400, 18 PCS)

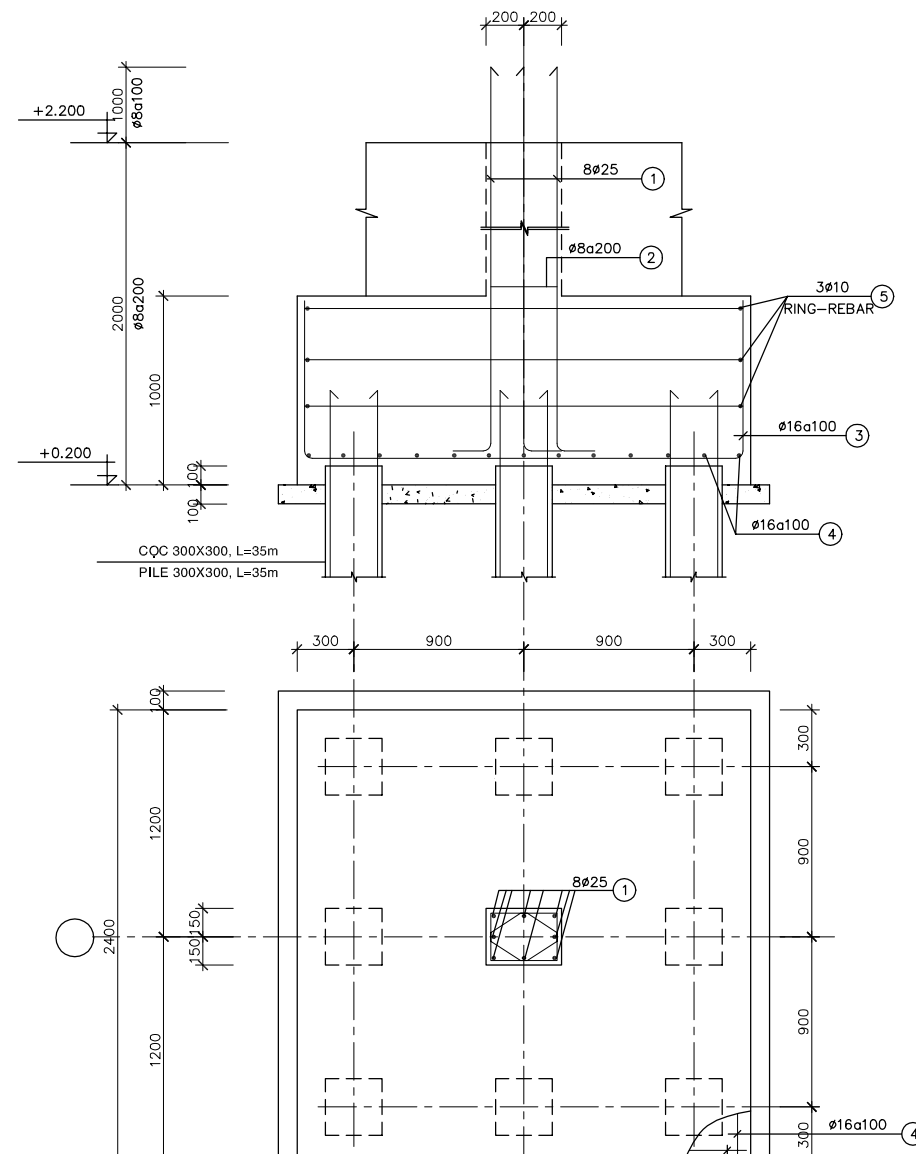
M1a
(1500X2400, 16 PCS)



COLUMN C1
(FROM +2.200~+5.800, 9 PCS)
COLUMN C1a
(FROM +2.200~+7.700, 9 PCS)

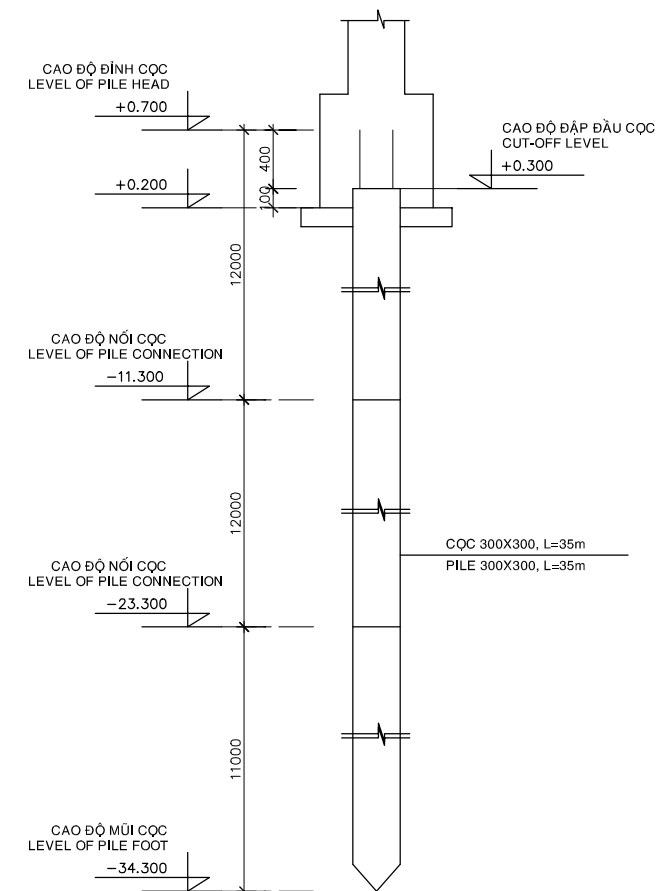


COLUMN C2
(FROM +2.200~+5.920, 9 PCS)
COLUMN C2a
(FROM +2.200~+6.580, 9 PCS)



M2
(2400X2400, 18 PCS)

M2a
(2400X2400, 16 PCS)

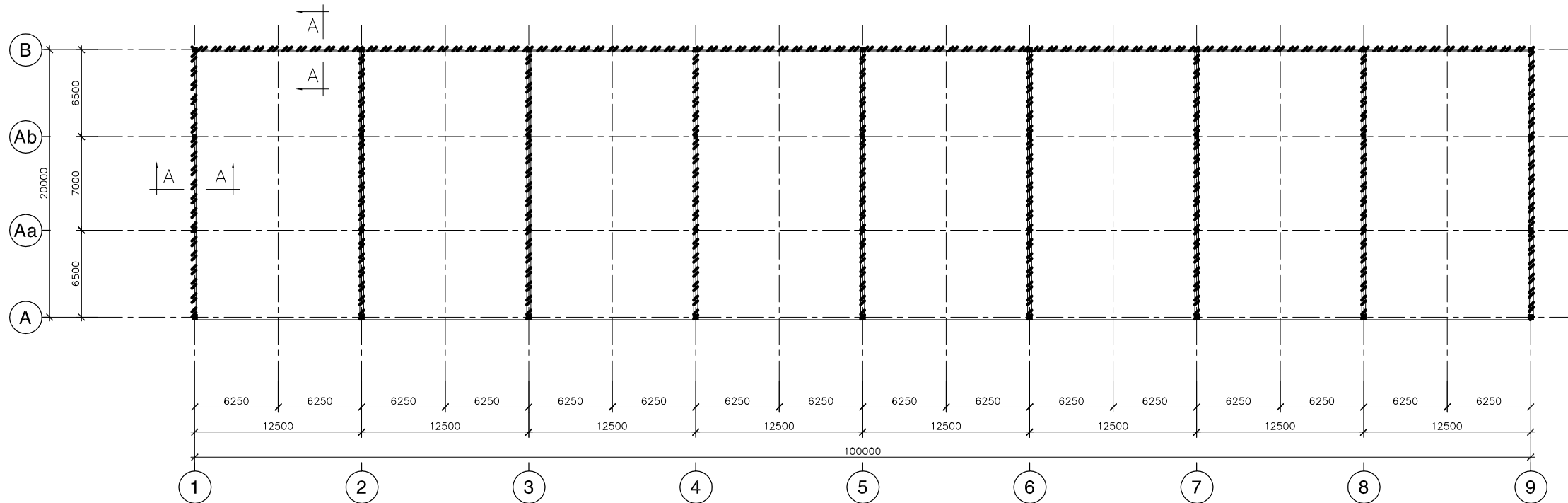


**SƠ ĐỒ ĐÓNG CỌC
PILING ELEVATION**

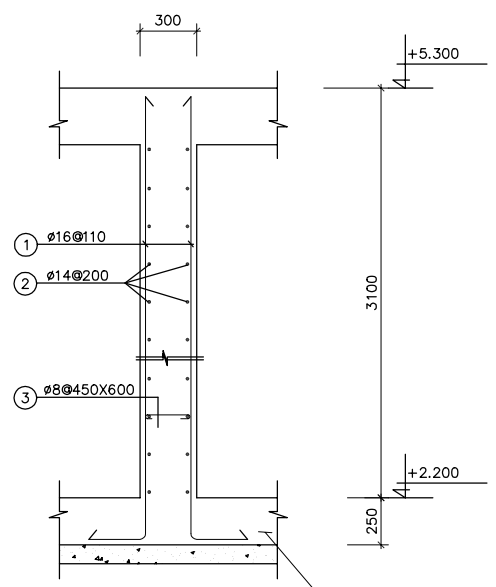
GHI CHÚ:
 - BÊ TÔNG LÓT ĐÁ 40x60, MÁC 100
 - BÊ TÔNG ĐÁ 10x20, MÁC 300
 - CỐT THÉP Ra=2000 Kg/cm2

NOTE:
 - LEAN CONCRETE STONE 40x60, GRADE 100
 - CONCRETE STONE 10x20, GRADE 300
 - REINFORCEMENT Ra=2000 Kg/cm2

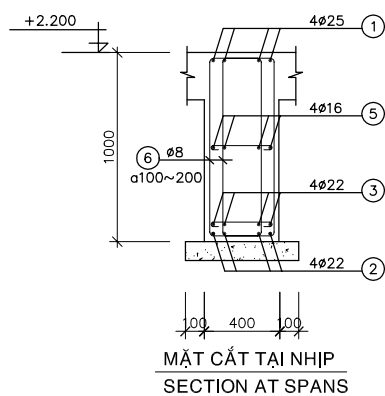
| NO. | DATE | DESCRIPTIONS | BY | APRO. |
|---|-------------------------|-----------------------------------|----|-------|
| REVISIONS | | | | |
| PROJECT MANAGEMENT UNIT FOR HO CHI MINH CITY WATER ENVIRONMENT IMPROVEMENT | | | | |
| THE DETAILED DESIGN STUDY ON HO CHI MINH CITY WATER ENVIRONMENT IMPROVEMENT PROJECT IN THE SOCIALIST REPUBLIC OF VIET NAM | | | | |
| PACKAGE E WASTEWATER TREATMENT PLANT | | | | |
| STORAGE VESSEL DETAIL OF FOUNDATIONS COLUMNS, GROUND-BEAM | | | | |
| SCALE : N.T.S | | | | |
| JAPAN INTERNATIONAL COOPERATION AGENCY (JICA) | | PACIFIC CONSULTANTS INTERNATIONAL | | |
| DESIGNED KIKUTA HIROSHI | CHECKED KONDO MASAMI | | | |
| DATE : JUNE 2001 | DWG. No. PE-WWTP-305-46 | | | |



MẶT BẰNG TƯỜNG BTCT
PLAN OF RC WALL

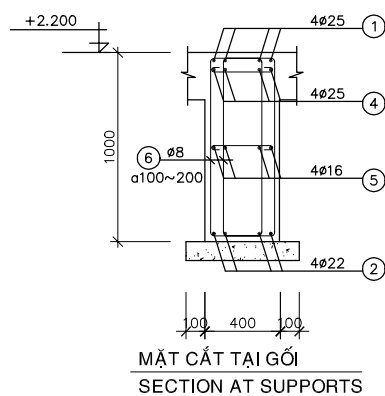


MẶT CẮT A-A
SECTION A-A
TYPICAL OF RC WALL

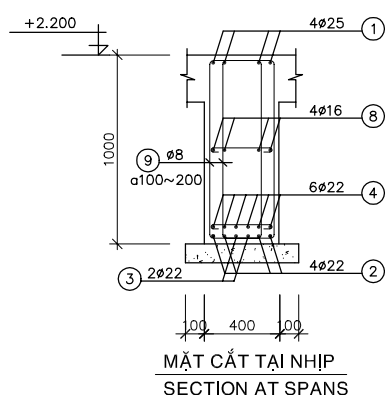


MẶT CẮT TẠI NHỊP
SECTION AT SPANS

DS1a
(L=100400, 1 PCS)

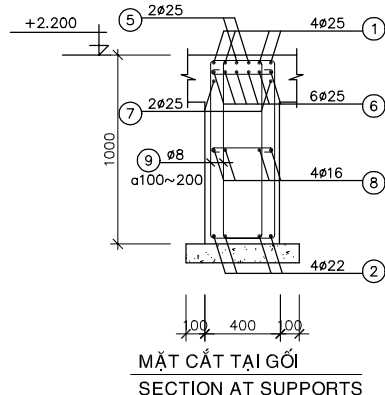


MẶT CẮT TẠI GỖ
SECTION AT SUPPORTS

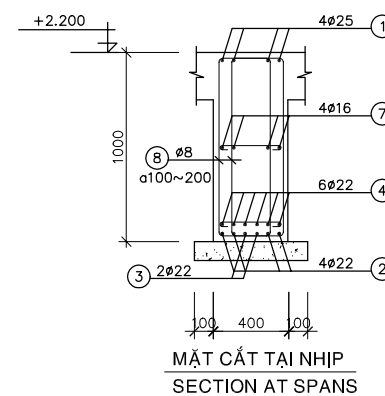


MẶT CẮT TẠI NHỊP
SECTION AT SPANS

DS2
(L=20400, 26 PCS)

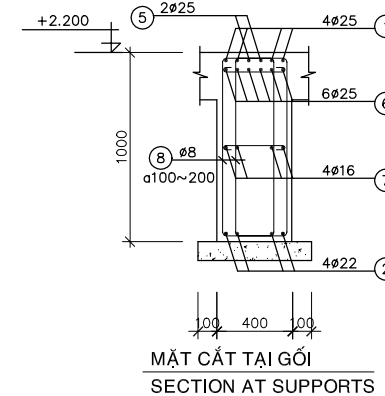


MẶT CẮT TẠI GỖ
SECTION AT SUPPORTS



MẶT CẮT TẠI NHỊP
SECTION AT SPANS

DS1
(L=100400, 3 PCS)



MẶT CẮT TẠI GỖ
SECTION AT SUPPORTS

GHI CHÚ:
- BÊ TÔNG LỚT ĐÁ 40x60, MÁC 100
- BÊ TÔNG ĐÁ 10x20, MÁC 300
- CỐT THÉP $R_a=2000$ Kg/cm²

NOTE:
- LEAN CONCRETE STONE 40x60, GRADE 100
- CONCRETE STONE 10x20, GRADE 300
- REINFORCEMENT $R_a=2000$ Kg/cm²

| NO. | DATE | DESCRIPTIONS | BY | APRO. |
|-----|------|--------------|----|-------|
| | | | | |
| | | | | |
| | | | | |
| | | | | |

REVISIONS

PROJECT MANAGEMENT UNIT FOR
HO CHI MINH CITY
WATER ENVIRONMENT IMPROVEMENT

THE DETAILED DESIGN STUDY ON HO CHI MINH CITY
WATER ENVIRONMENT IMPROVEMENT PROJECT
IN THE SOCIALIST REPUBLIC OF VIET NAM

PACKAGE E
WASTEWATER TREATMENT PLANT

STORAGE VESSEL
PLAN & DETAIL OF RC. WALL
DETAILS OF GROUND BEAMS

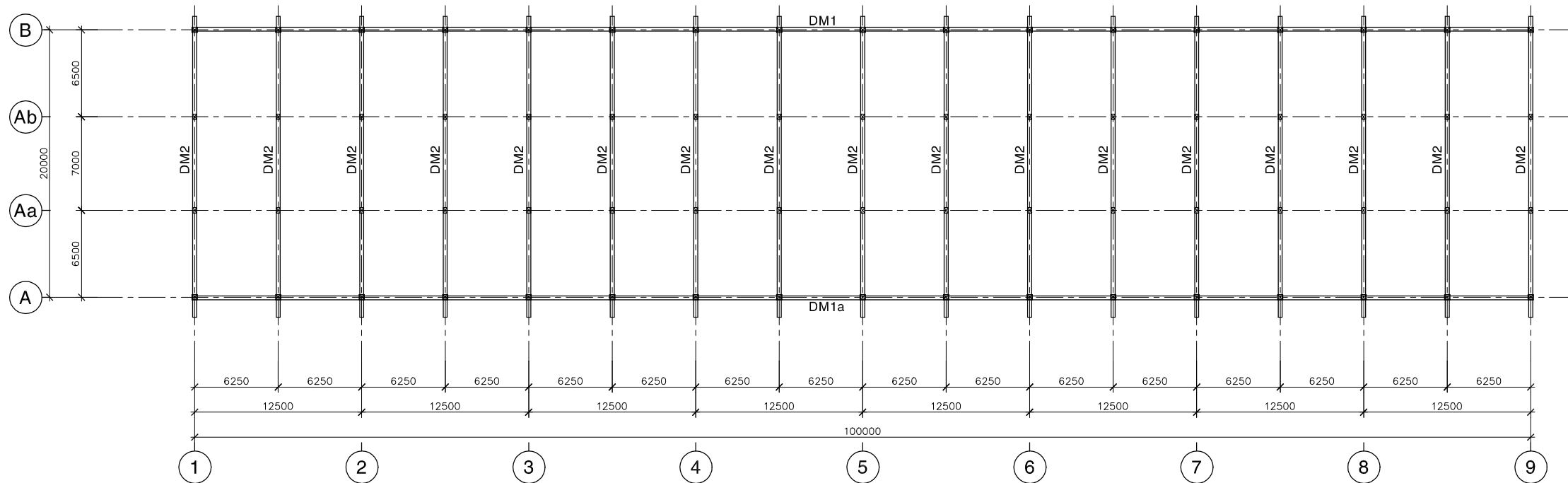
SCALE : N.T.S

JAPAN INTERNATIONAL COOPERATION
AGENCY (JICA)

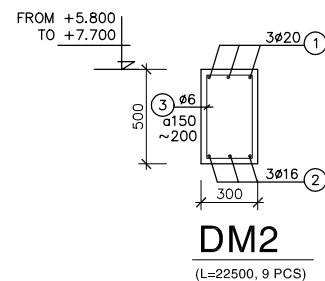
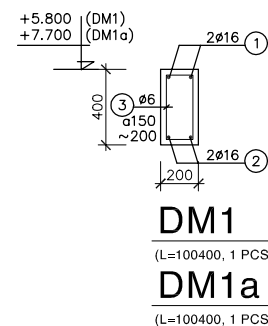
PACIFIC CONSULTANTS INTERNATIONAL

| | |
|----------------------------|-------------------------|
| DESIGNED KIKUTA HIROSHI | CHECKED KONDO MASAMI |
|----------------------------|-------------------------|

DATE : JUNE 2001 DWG. No. PE-WWTP-305-47



MẶT BẰNG DẦM MÁI
PLAN OF ROOF BEAMS



GHI CHÚ:
- BÊ TÔNG LÓT ĐÁ 40x60, MÁC 100
- BÊ TÔNG ĐÁ 10x20, MÁC 300
- CỐT THÉP Ra=2000 Kg/cm²

NOTE :
- LEAN CONCRETE STONE 40x60, GRADE 100
- CONCRETE STONE 10x20, GRADE 300
- REINFORCEMENT Ra=2000 Kg/cm²

| NO. | DATE | DESCRIPTIONS | BY | APRO. |
|-----|------|--------------|----|-------|
| | | | | |
| | | | | |
| | | | | |
| | | | | |

REVISIONS

PROJECT MANAGEMENT UNIT FOR
HO CHI MINH CITY
WATER ENVIRONMENT IMPROVEMENT

THE DETAILED DESIGN STUDY ON HO CHI MINH CITY
WATER ENVIRONMENT IMPROVEMENT PROJECT
IN THE SOCIALIST REPUBLIC OF VIET NAM

PACKAGE E
WASTEWATER TREATMENT PLANT

STORAGE VESSEL
PLAN & DETAIL OF ROOF BEAMS

SCALE : N.T.S

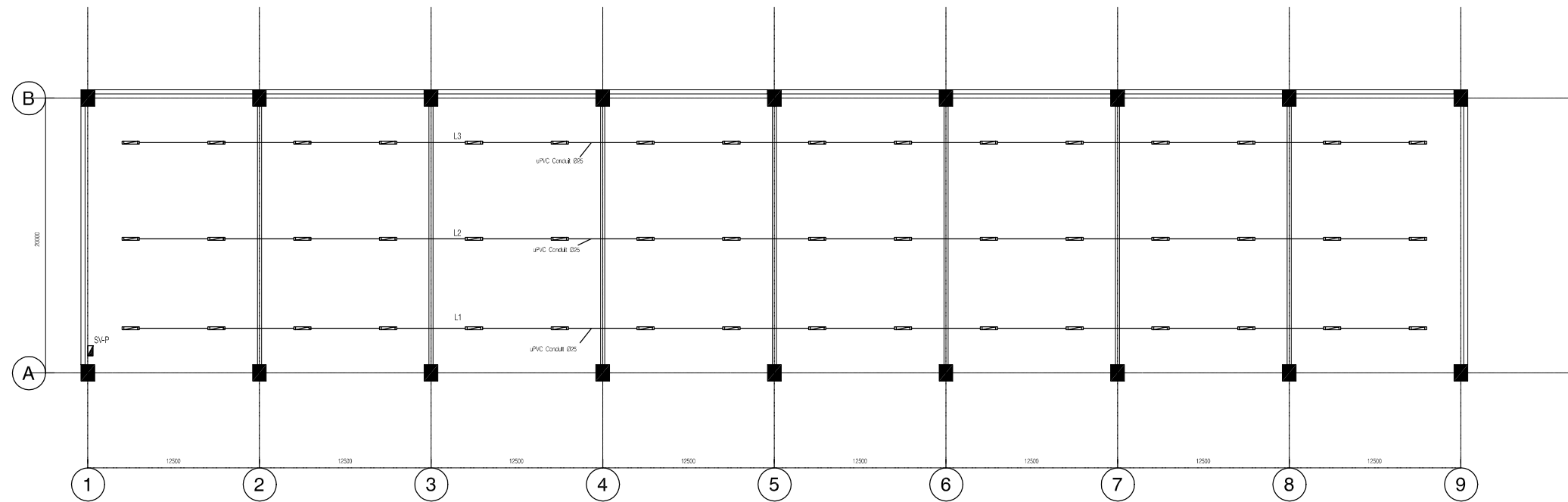
JICA JAPAN INTERNATIONAL COOPERATION
AGENCY (JICA)

PACIFIC CONSULTANTS INTERNATIONAL

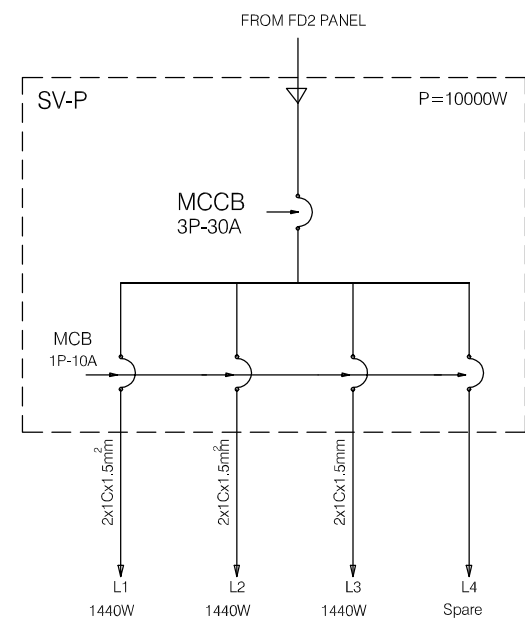
DESIGNED
KIKUTA HIROSHI

CHECKED
KONDO MASAMI

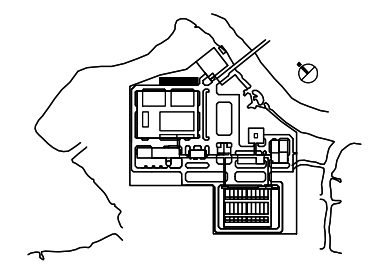
DATE : JUNE 2001 DWG. No. PE-WWTP-305-48



LIGHTING LAYOUT PLAN
SCALE : 1/200



- LEGEND
- ⊗ 400W HIGH PRESSURE SODIUM INDUSTRIAL HIGH BAY LUMINAIRE
 - 2x36W RECESSED FLOURESCENT
 - ▬ 2x36W FLOURESCENT BATTEN (CEILING OR WALL MOUNTED)
 - 1x40W DOWNLIGHT (in VIC)
 - 100W OUTDOOR LUMINAIRE, IP 56
 - ◆ 1x40W DOWNLIGHT (in VIC)
 - 1x18W FLOURESCENT BATTEN, IP65
 - ▬ 1x36W FLOURESCENT BATTEN, IP65
 - 2x10W NON-MAINTAINED EXIT LIGHT
 - 16A DUPLEX SOCKET OUTLET
 - ⚡ 16A DUPLEX SOCKET OUTLET FOR A/C UNIT
 - ⚡ 1 WAY SINGLE SWITCH
 - DISTRIBUTION BOARD
 - DL : DOOR LOUVER
 - EAF : EXHAUST AIR FAN



| | | | | |
|--|--|--|--|--|
| | | | | |
| | | | | |
| | | | | |
| | | | | |
| | | | | |

| NO. | DATE | DESCRIPTIONS | BY | APRO. |
|-----------|------|--------------|----|-------|
| REVISIONS | | | | |

PROJECT MANAGEMENT UNIT FOR
HO CHI MINH CITY
WATER ENVIRONMENT IMPROVEMENT

THE DETAILED DESIGN STUDY ON HO CHI MINH CITY
WATER ENVIRONMENT IMPROVEMENT PROJECT
IN THE SOCIALIST REPUBLIC OF VIET NAM

PACKAGE E
WASTEWATER TREATMENT PLANT
STORAGE VESSEL
LIGHTING LAYOUT PLAN

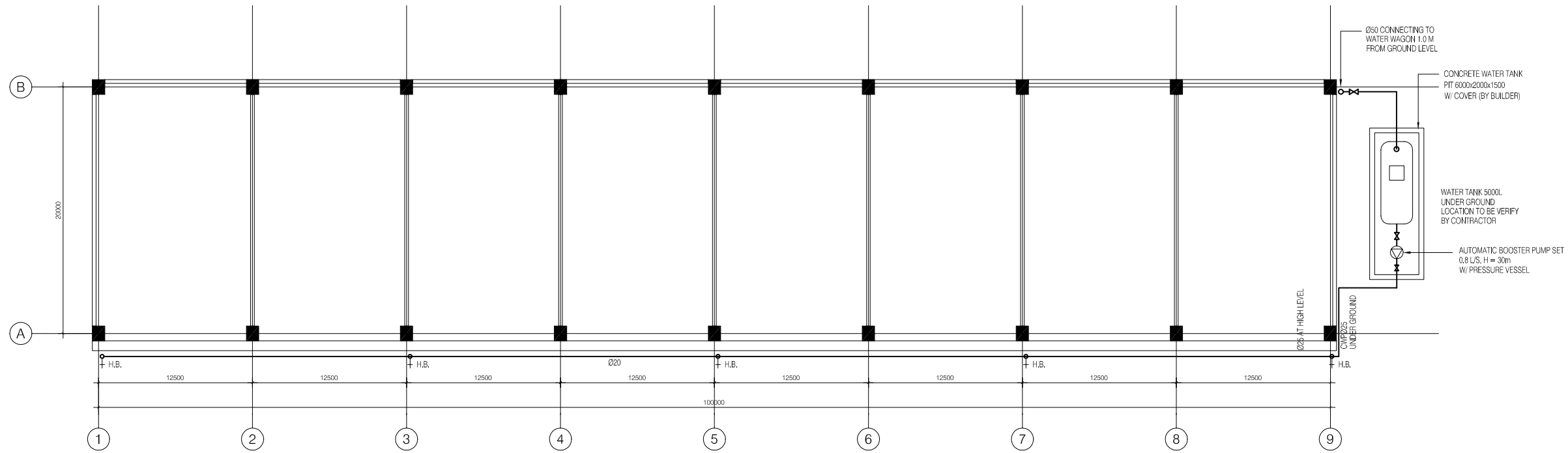
SCALE : 1/200

JICA JAPAN INTERNATIONAL COOPERATION AGENCY (JICA)

PC PACIFIC CONSULTANTS INTERNATIONAL

| | |
|----------------------------|-------------------------|
| DESIGNED KIKUTA HIROSHI | CHECKED KONDO MASAMI |
|----------------------------|-------------------------|

DATE : JUNE 2001 DWG. No. PE-WWTP-305-49



PLUMBING PLAN

SCALE : 1/100

| NO. | DATE | DESCRIPTIONS | BY | APRO. |
|-----|------|--------------|----|-------|
| | | | | |
| | | | | |
| | | | | |
| | | | | |

REVISIONS

PROJECT MANAGEMENT UNIT FOR
HO CHI MINH CITY
WATER ENVIRONMENT IMPROVEMENT

THE DETAILED DESIGN STUDY ON HO CHI MINH CITY
WATER ENVIRONMENT IMPROVEMENT PROJECT
IN THE SOCIALIST REPUBLIC OF VIET NAM

PACKAGE E
WASTEWATER TREATMENT PLANT

STORAGE VESSEL
PLUMBINGPLAN

SCALE : 1/100

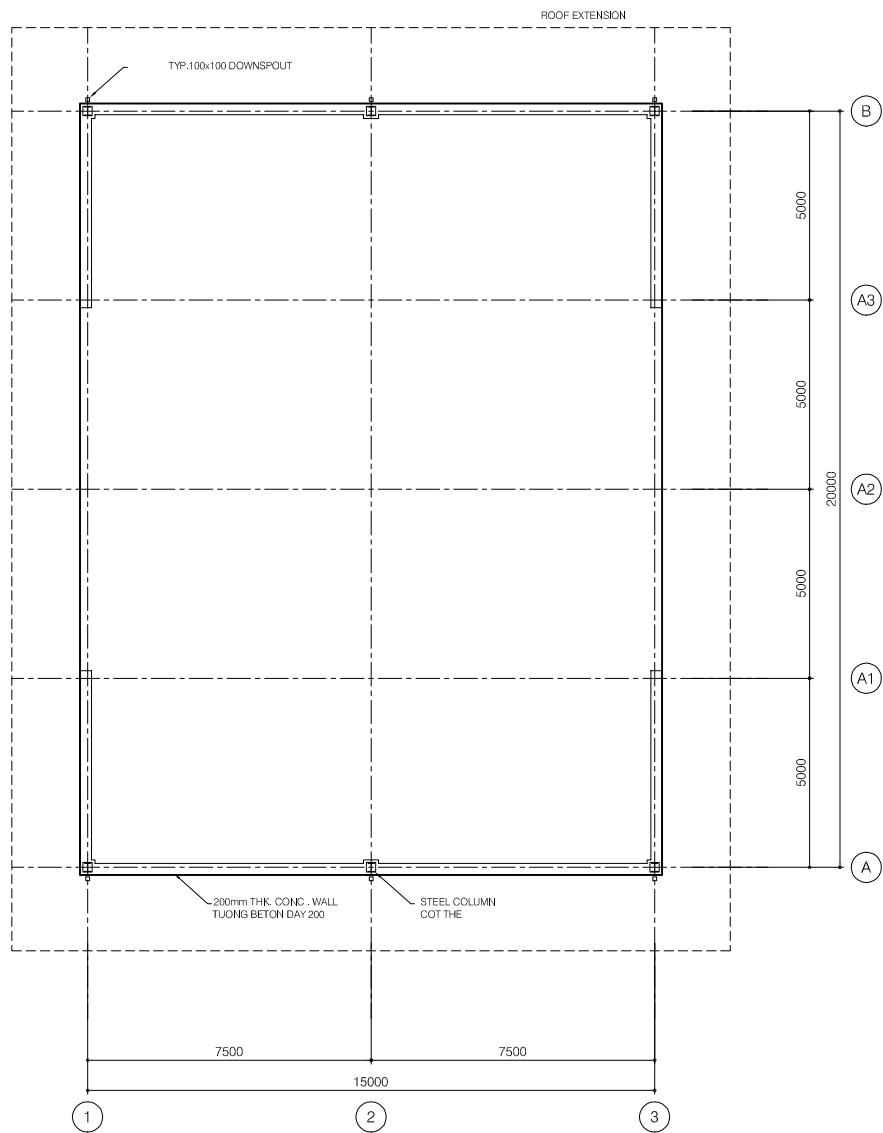
JAPAN INTERNATIONAL COOPERATION
AGENCY (JICA)

PACIFIC CONSULTANTS INTERNATIONAL

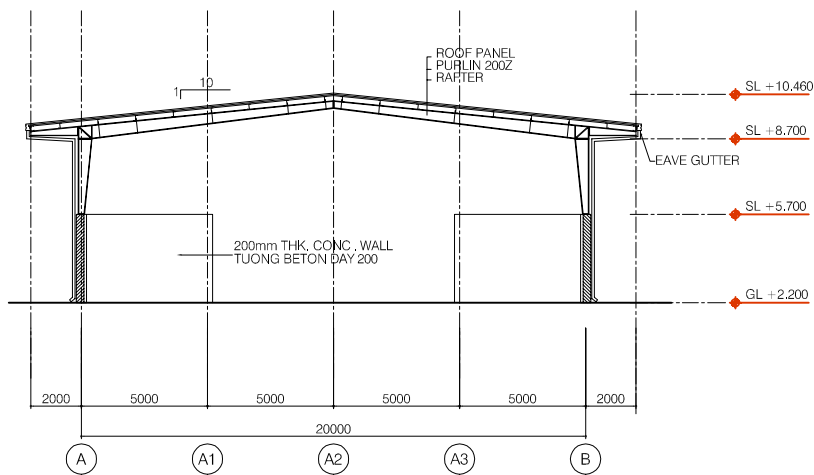
| | |
|----------------------------|-------------------------|
| DESIGNED KIKUTA HIROSHI | CHECKED KONDO MASAMI |
|----------------------------|-------------------------|

DATE : JUNE 2001 DWG. No. PE-WWTP-305-50

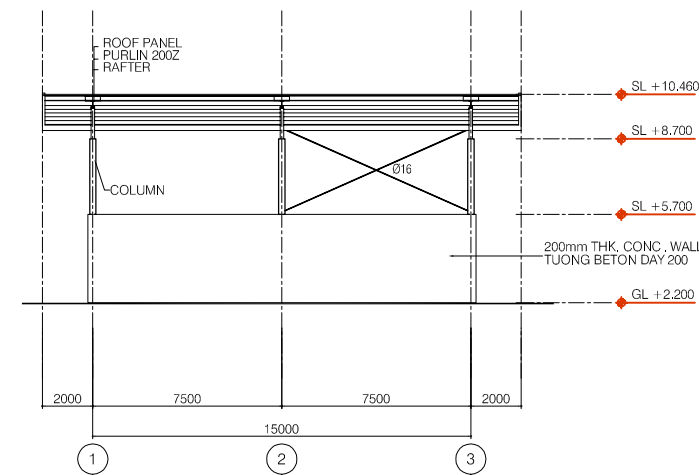
Sub storage vessel



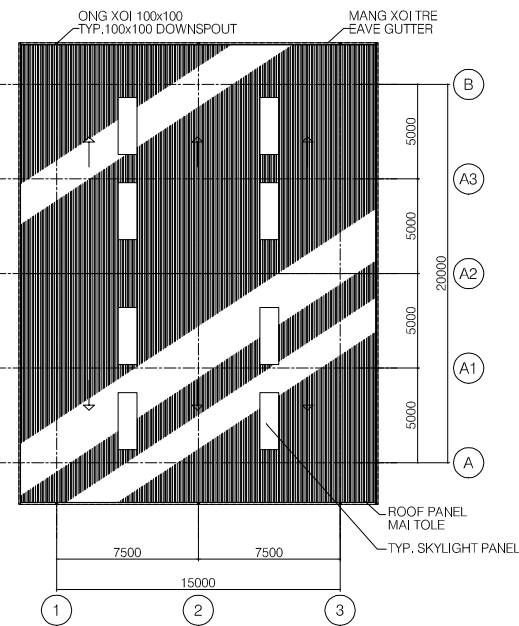
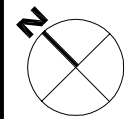
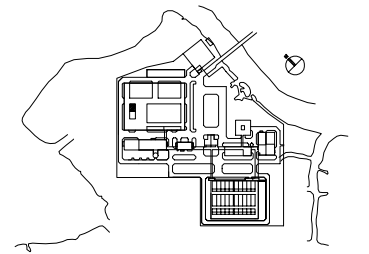
GROUND FLOOR PLAN
SCALE 1/100



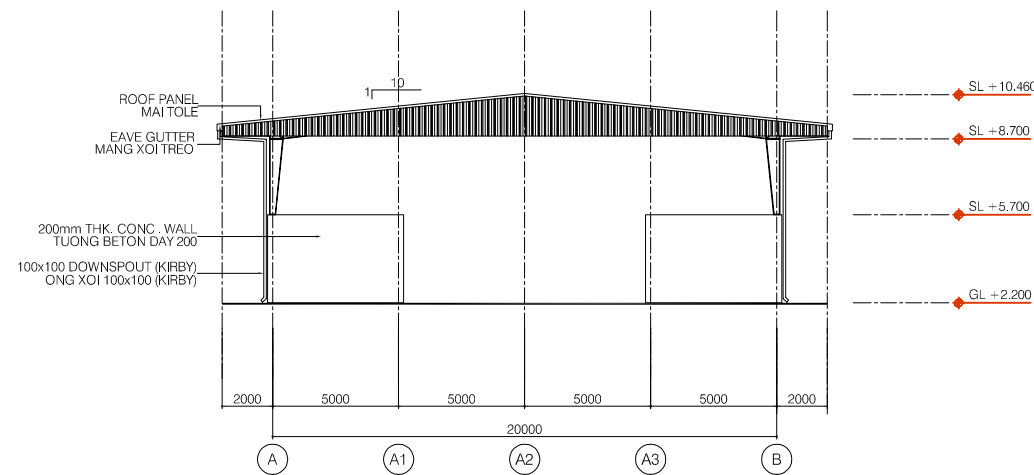
CROSS SECTION
SCALE 1/150



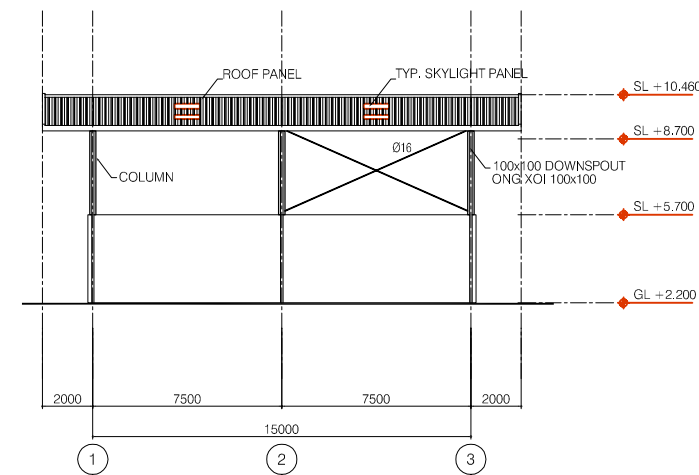
LONGITUDINAL SECTION
SCALE 1/150



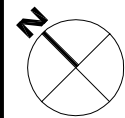
ROOF PLAN
SCALE 1/200



ELEVATION LINE 3
SCALE 1/150



ELEVATION LINE A
SCALE 1/150



| NO. | DATE | DESCRIPTIONS | BY | APRO. |
|-----|------|--------------|----|-------|
| | | | | |
| | | | | |
| | | | | |
| | | | | |

REVISIONS

PROJECT MANAGEMENT UNIT FOR
HO CHI MINH CITY
WATER ENVIRONMENT IMPROVEMENT

THE DETAILED DESIGN STUDY ON HO CHI MINH CITY
WATER ENVIRONMENT IMPROVEMENT PROJECT
IN THE SOCIALIST REPUBLIC OF VIET NAM

PACKAGE E
WASTEWATER TREATMENT PLANT
SUB-STORAGE VESSEL
FLOOR PLAN, ROOF PLAN,
SECTIONS & ELEVATIONS

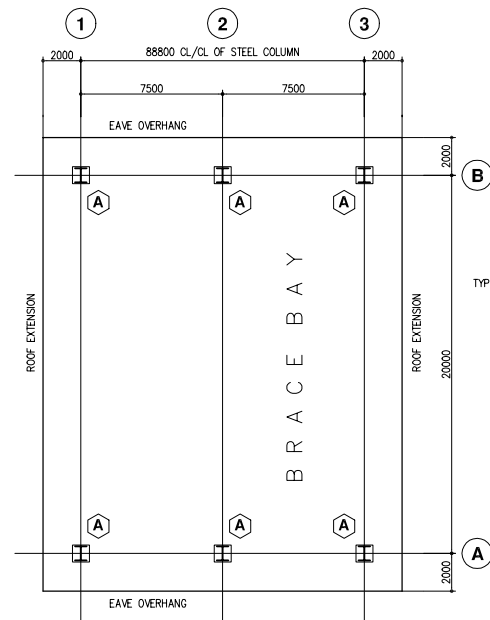
SCALE : AS SHOWN

JICA JAPAN INTERNATIONAL COOPERATION
AGENCY (JICA)

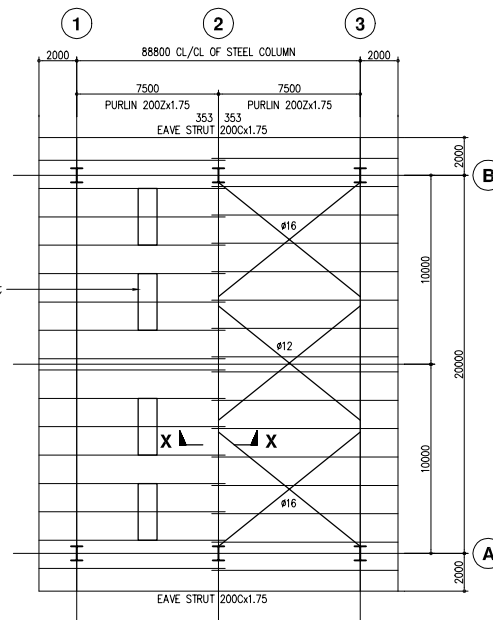
PACIFIC CONSULTANTS INTERNATIONAL

| | |
|----------------------------|-------------------------|
| DESIGNED KIKUTA HIROSHI | CHECKED KONDO MASAMI |
|----------------------------|-------------------------|

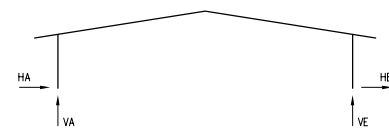
DATE : JUNE 2001 DWG. No. PE-WWTP-305-61



PRIMARY STEEL PLAN



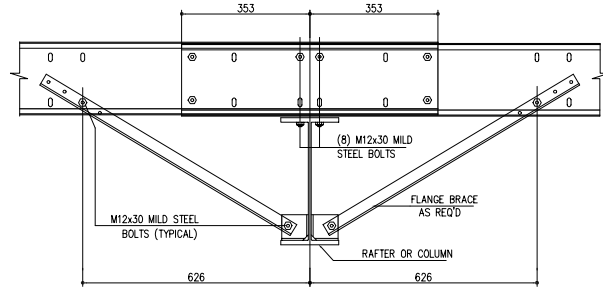
ROOF FRAMING PLAN



MAIN FRAME REACTIONS (KN)

COLUMN BASE REACTIONS FOR LOAD COMBINATIONS

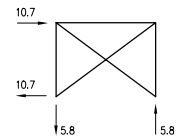
| | HORIZ. KN | VERT. KN | MOMT. KN-M | LOAD COMBINATION |
|------------------|-----------|----------|------------|------------------------|
| LEFT EXT. COLUMN | HA | VA | | |
| | 46.91 | 54.02 | 0.00 | CASE 1--1.0DL + 1.0LL |
| | -20.66 | -21.78 | 0.00 | CASE 2--1.0DL + 1.0WLL |
| LEFT EXT. COLUMN | HE | VE | | |
| | -46.91 | 54.02 | 0.00 | CASE 1--1.0DL + 1.0LL |
| | 11.09 | -13.91 | 0.00 | CASE 2--1.0DL + 1.0WLL |



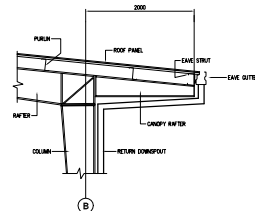
SECTION X-X

ALL HIGH STRENGTH BOLTS SHALL HAVE 2 HIGH STRENGTH WASHERS AND ONE HIGH STRENGTH NUT, AND SHALL BE INSTALLED IN ACCORDANCE WITH ASTM A325 BOLT SPECIFICATIONS.

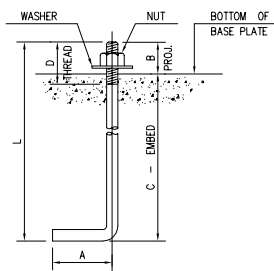
NOTE: - PLEASE MAKE SURE THAT ALL CONCRETE COLUMNS ARE DESIGNED FOR HORIZONTAL AS WELL AS VERTICAL REACTIONS FROM FRAMES AT TOP OF CONCRETE COLUMN.



BRACED BAY REACTIONS



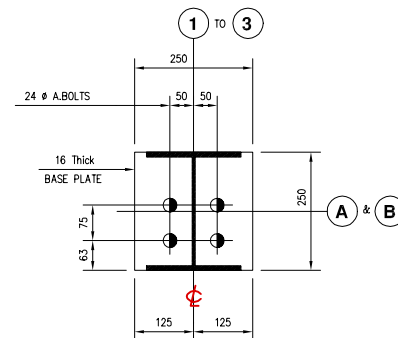
CANOPY DETAIL



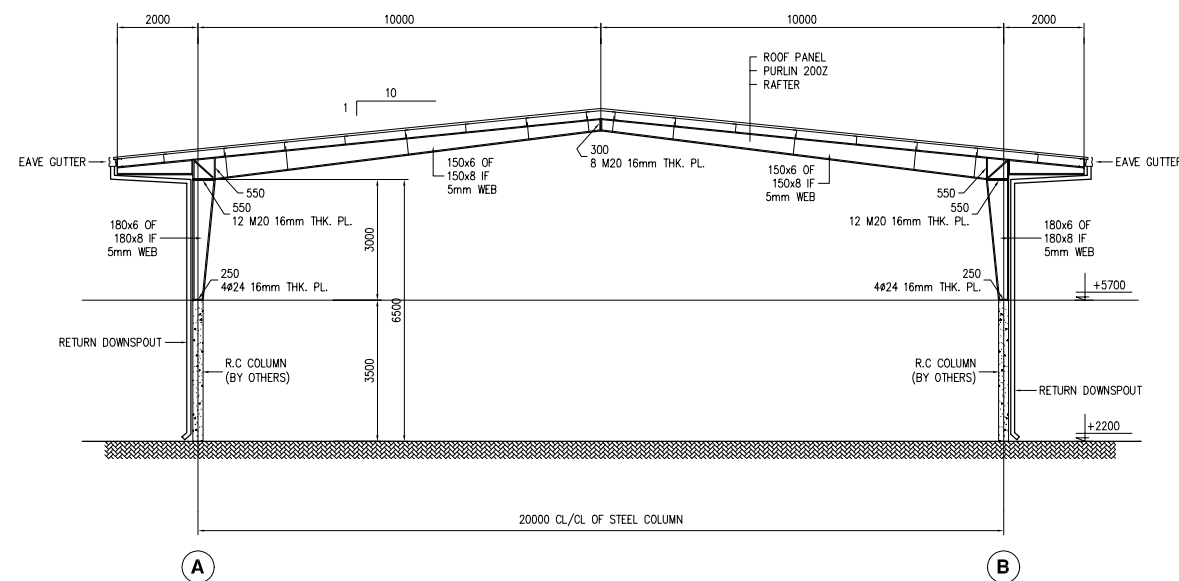
ANCHOR BOLT SETTING

ANCHOR BOLT SCHEDULE -- BOLTS BY:--

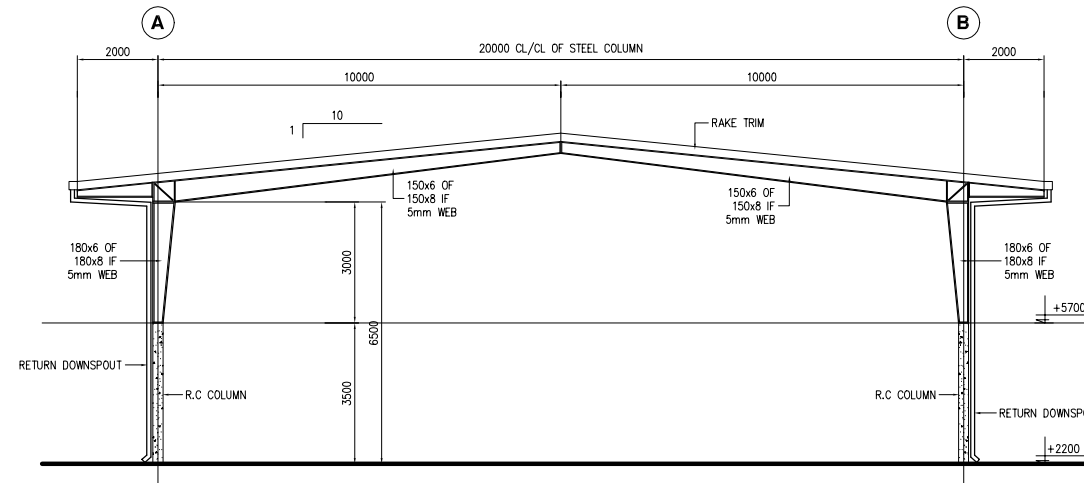
| SYMBOL | QUANTITY | DIAMETER | L | A | B | C | D |
|--------|----------|--|-----|-----|----|-----|-----|
| ⊕ | -- | 16 | 400 | 100 | 65 | 335 | 75 |
| ⊕ | -- | 20 | 500 | 120 | 65 | 435 | 75 |
| ⊕ | -- | 24 | 650 | 150 | 65 | 585 | 75 |
| ⊕ | -- | 32 | 950 | 200 | 75 | 875 | 100 |
| ⊕ | -- | M10x90 Expansion Bolts (HILTI HSA STUD TYPE - New Version) | | | | | |



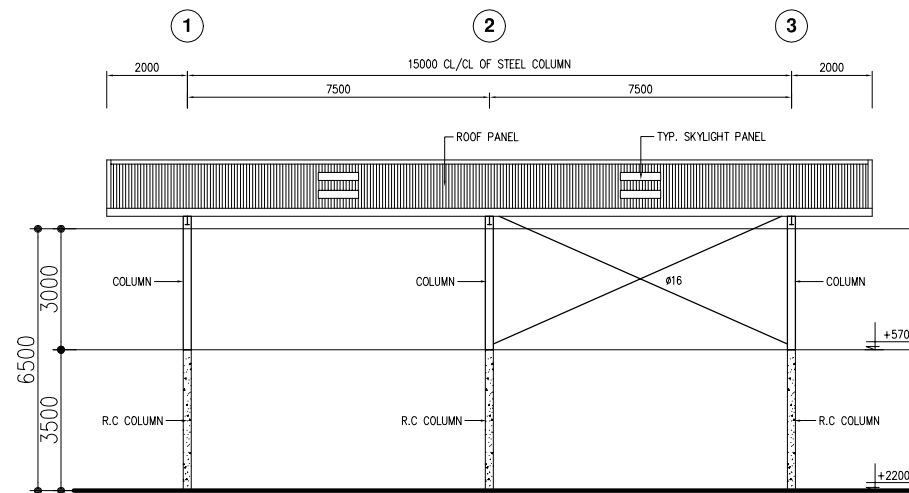
DETAIL - A



TYP. CROSS SECTION



ENDWALL ELEVATION A1-B1 (AS DRAWN)
ENDWALL ELEVATION B1-A1 (OPP. HAND)



SIDEWALL ELEVATION 1C-1A (AS DRAWN)
SIDEWALL ELEVATION 1A-1C (OPP. HAND)

TYPICAL BUILT-UP SECTION DESIGNATION SYSTEM

Eg.: Size 200 x 10 x 5 @ 400
Flanges = 200mm Wide x 10 mm thick.
Web = 5 mm thick.
Depth of Web = 400 mm.

| Designation | Depth | Width |
|-------------|-------|-------|
| WBx10 | 200 | 100 |
| WBx18 | 208 | 133 |
| WBx24 | 200 | 165 |
| WBx31 | 203 | 203 |
| W12x14 | 302 | 100 |
| W12x22 | 311 | 100 |
| W14x82 | 363 | 257 |

| Designation | Depth | Width |
|-------------|-------|-------|
| CBx11.5 | 254 | 57 |
| C10x15.3 | 254 | 66 |
| C12x20.7 | 305 | 75 |
| C15x33.9 | 381 | 86 |
| C20x75 | 200 | 75 |
| C30x100 | 300 | 100 |

DESIGN LOADS :
DL = 0.1KN/M² + SELF WEIGHT OF STRUCTURE FOR FRAME
LL = 0.57KN/M²
WIND SPEED = 31.0M/SEC.

DESIGN CRITERIA :
- METAL BUILDING MANUFACTURERS ASSOCIATION (MBMA)
- AMERICAN INSTITUTE OF STEEL CONSTRUCTION (AISC)
- AMERICAN IRON AND STEEL INSTITUTE (AISI)
- AMERICAN WELDING SOCIETY (AWS)

- ALL DIMENSIONS ARE IN MILLIMETER
- DO NOT SCALE DRAWING
- THIS DRAWING FOR PROPOSAL ONLY
- NOT FOR CONSTRUCTION

- ALL STEEL COLUMNS SIT ON TOP OF R.C. WALLS AT LEVEL +5700

| NO. | DATE | DESCRIPTIONS | BY | APRO. |
|-----|------|--------------|----|-------|
| | | | | |

REVISIONS

PROJECT MANAGEMENT UNIT FOR
HO CHI MINH CITY
WATER ENVIRONMENT IMPROVEMENT

THE DETAILED DESIGN STUDY ON HO CHI MINH CITY
WATER ENVIRONMENT IMPROVEMENT PROJECT
IN THE SOCIALIST REPUBLIC OF VIET NAM

PACKAGE E
WASTEWATER TREATMENT PLANT
SUB-STORAGE VESSEL
STEEL COLUMN PLAN &
SECTIONS & DETAILS

SCALE : N.T.S

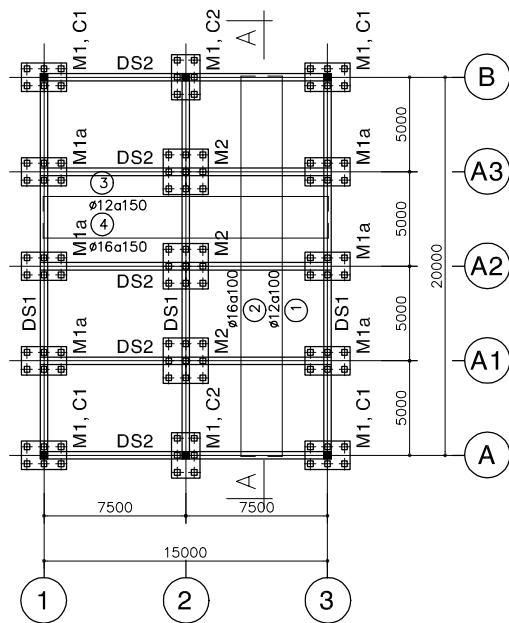
JICA JAPAN INTERNATIONAL COOPERATION AGENCY (JICA)

PACIFIC CONSULTANTS INTERNATIONAL

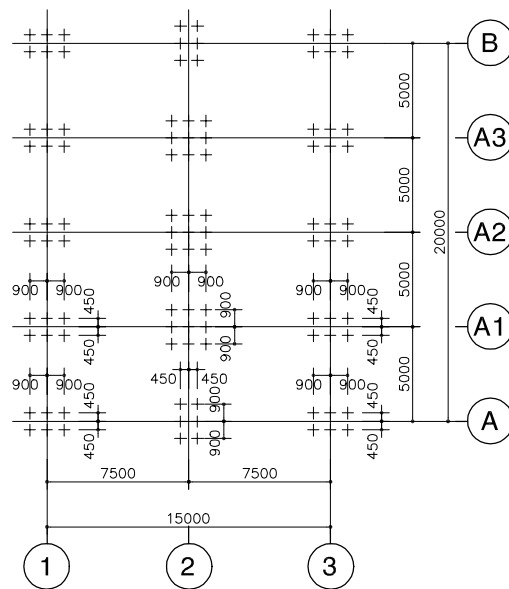
DESIGNED
KIKUTA HIROSHI

CHECKED
KONDO MASAMI

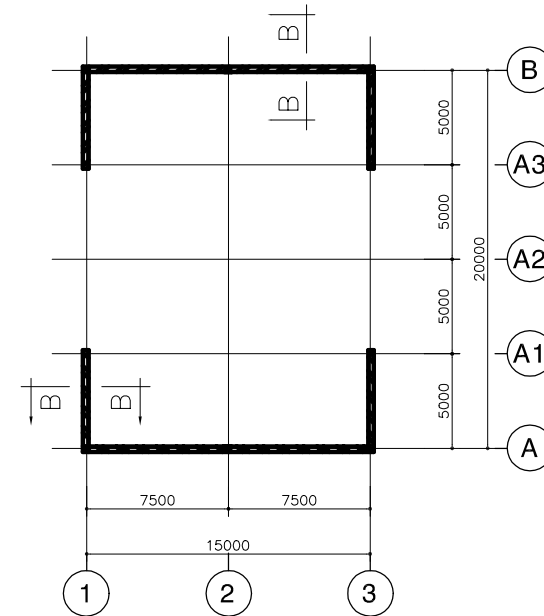
DATE : JUNE 2001 DWG. No. PE-WWTP-305-62



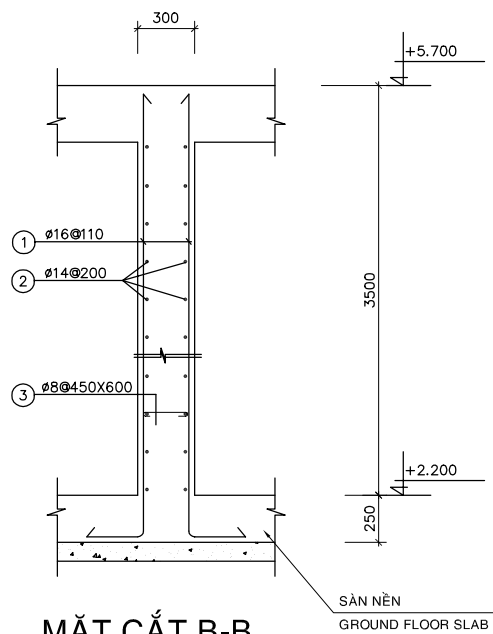
MẶT BẰNG MÓNG, CỘT & ĐÀ KIỀNG
PLAN OF FOUNDATION, COLUMN & G-BEAM



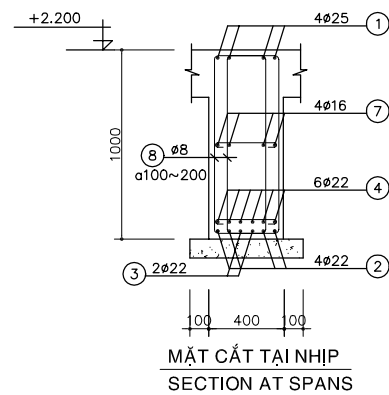
MẶT BẰNG ĐỊNH VỊ CỌC
PLAN OF PILES LOCATION



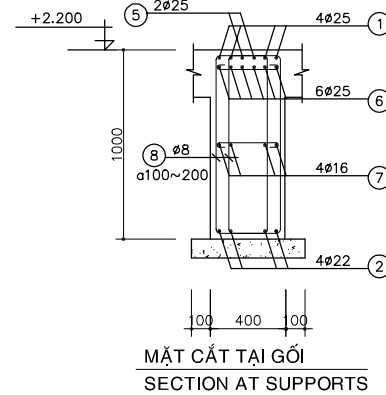
MẶT BẰNG TƯỜNG BTCT
PLAN OF RC WALL



MẶT CẮT B-B
SECTION B-B
TYPICAL OF RC WALL

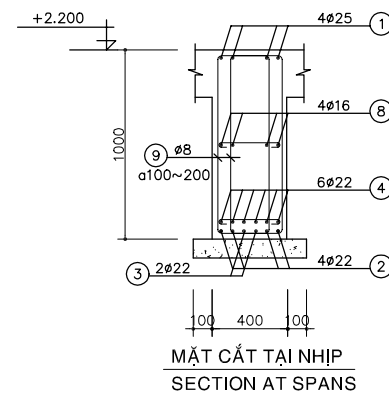


MẶT CẮT TẠI NHỊP
SECTION AT SPANS

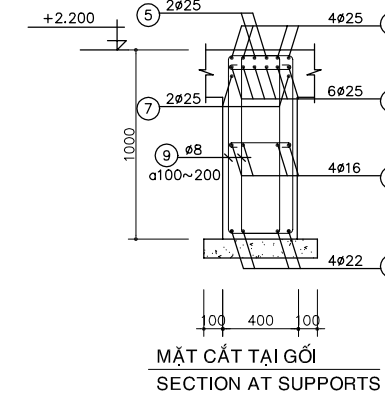


MẶT CẮT TẠI GỖ
SECTION AT SUPPORTS

DS1
(L=20400, 3 PCS)

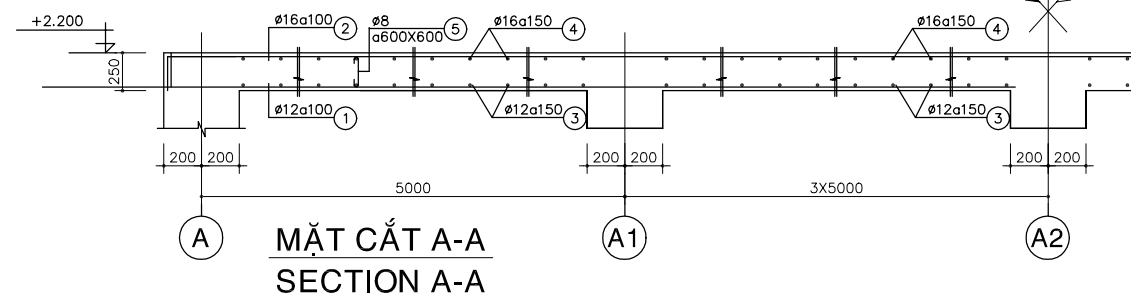


MẶT CẮT TẠI NHỊP
SECTION AT SPANS



MẶT CẮT TẠI GỖ
SECTION AT SUPPORTS

DS2
(L=15400, 5 PCS)



MẶT CẮT A-A
SECTION A-A

GHI CHÚ:

- BÊ TÔNG LÓT ĐÁ 40X60, MÁC 100
- BÊ TÔNG ĐÁ 10X20, MÁC 300
- CỐT THÉP $R_a=2000$ Kg/cm²

NOTE :

- LEAN CONCRETE STONE 40x60, GRADE 100
- CONCRETE STONE 10x20, GRADE 300
- REINFORCEMENT $R_a=2000$ Kg/cm²

| NO. | DATE | DESCRIPTIONS | BY | APRO. |
|-----|------|--------------|----|-------|
| | | | | |
| | | | | |
| | | | | |
| | | | | |

REVISIONS

PROJECT MANAGEMENT UNIT FOR
HO CHI MINH CITY
WATER ENVIRONMENT IMPROVEMENT

THE DETAILED DESIGN STUDY ON HO CHI MINH CITY
WATER ENVIRONMENT IMPROVEMENT PROJECT
IN THE SOCIALIST REPUBLIC OF VIET NAM

PACKAGE E
WASTEWATER TREATMENT PLANT
SUB-STORAGE VESSEL
PLANS & DETAILS OF FOUNDATIONS, COLUMNS,
G-BEAMS & RC WALL

SCALE : N.T.S

JICA JAPAN INTERNATIONAL COOPERATION
AGENCY (JICA)

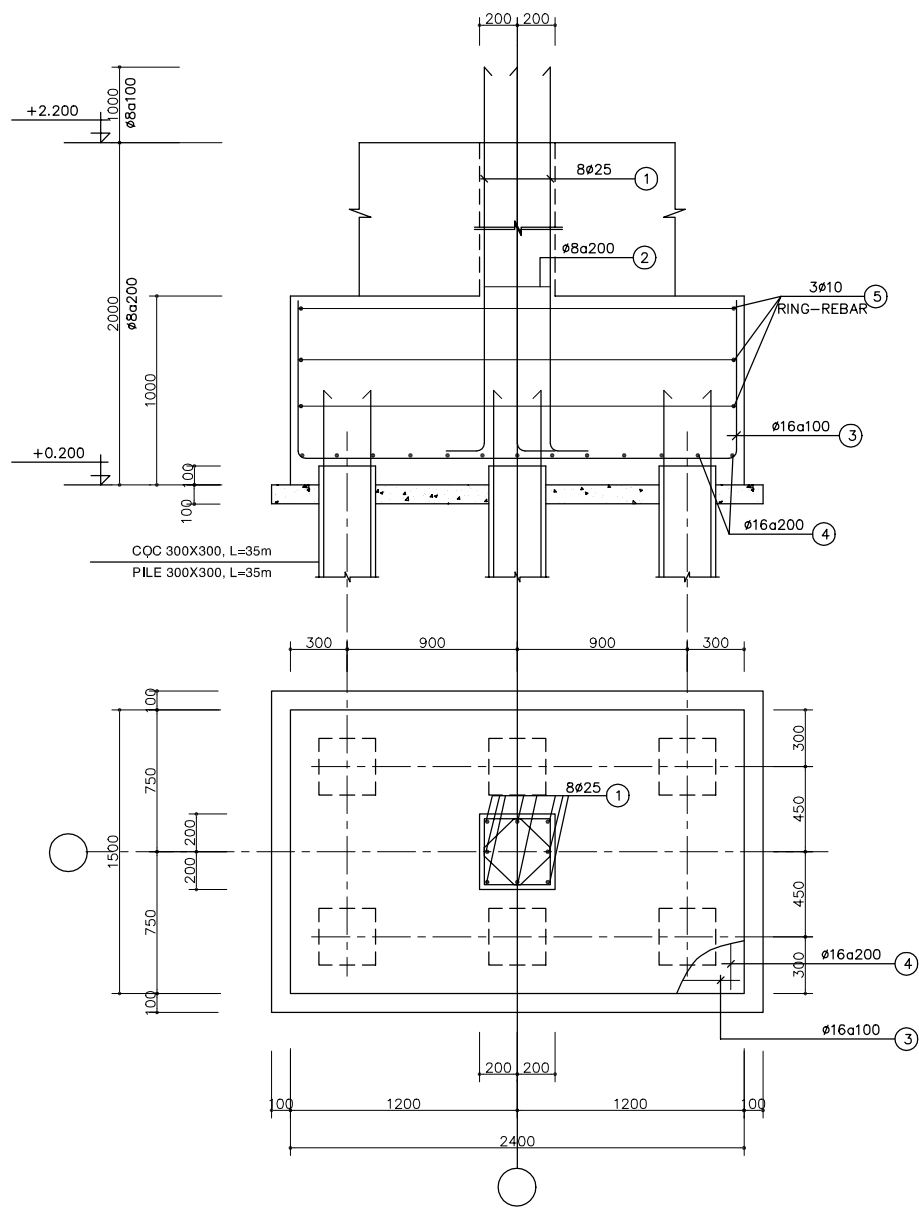
PACIFIC CONSULTANTS INTERNATIONAL

DESIGNED
KIKUTA HIROSHI

CHECKED
KONDO MASAMI

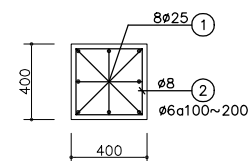
DATE : JUNE 2001

DWG. No. PE-WWTP-305-63

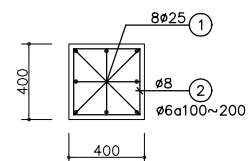


M1
(1500X2400, 6 PCS)

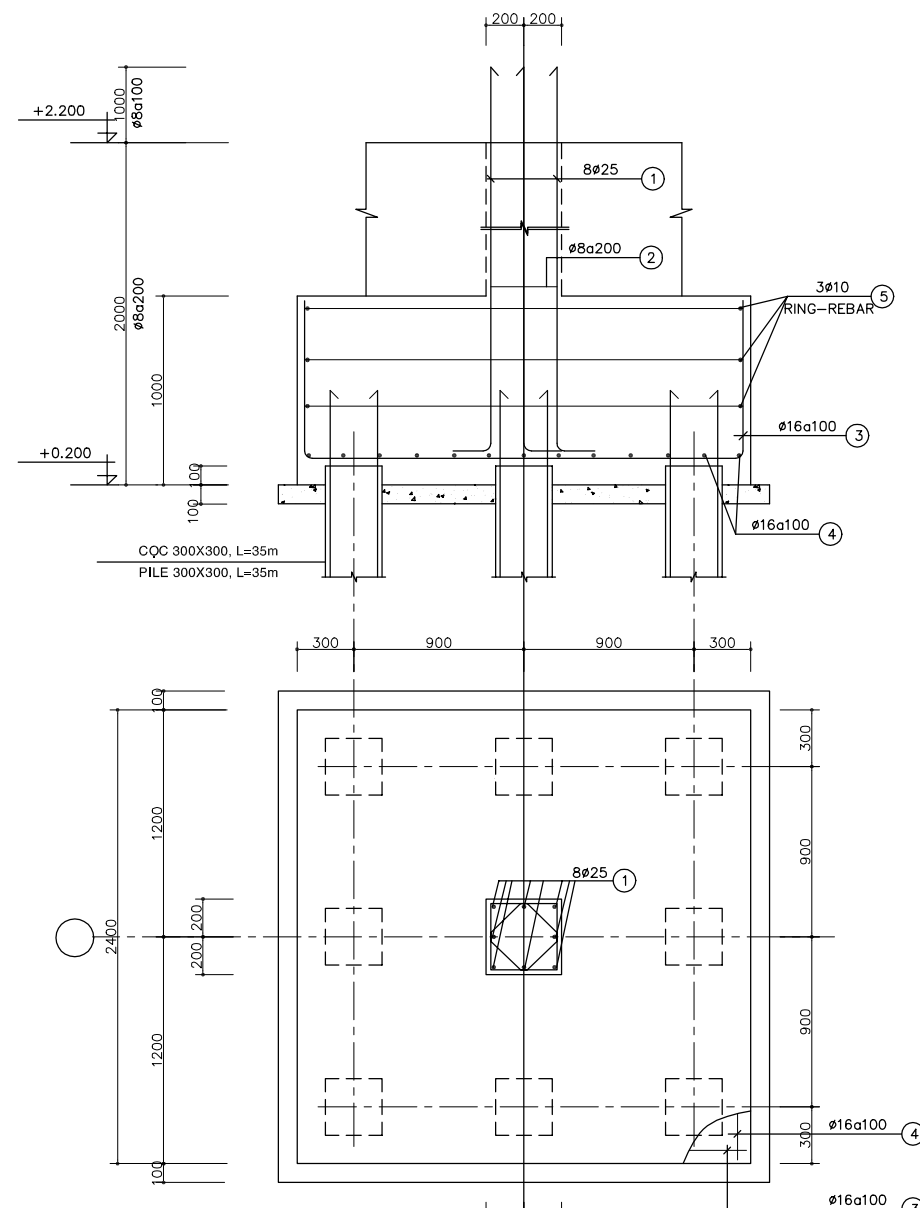
M1a
(1500X2400, 6 PCS)



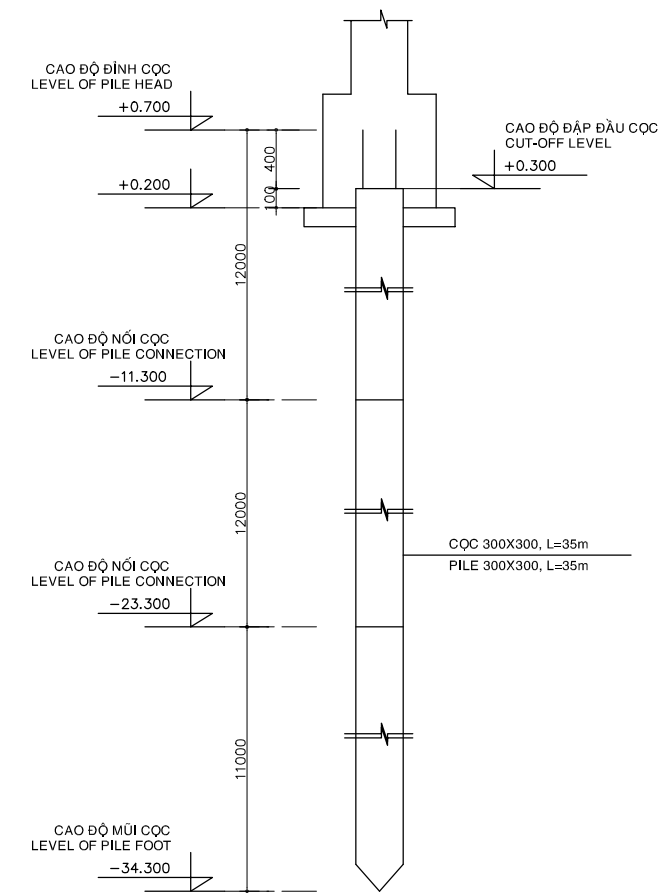
COLUMN C1
(FROM +2.200~+5.700, 4 PCS)



COLUMN C2
(FROM +2.200~+5.700, 2 PCS)



M2
(2400X2400, 3 PCS)

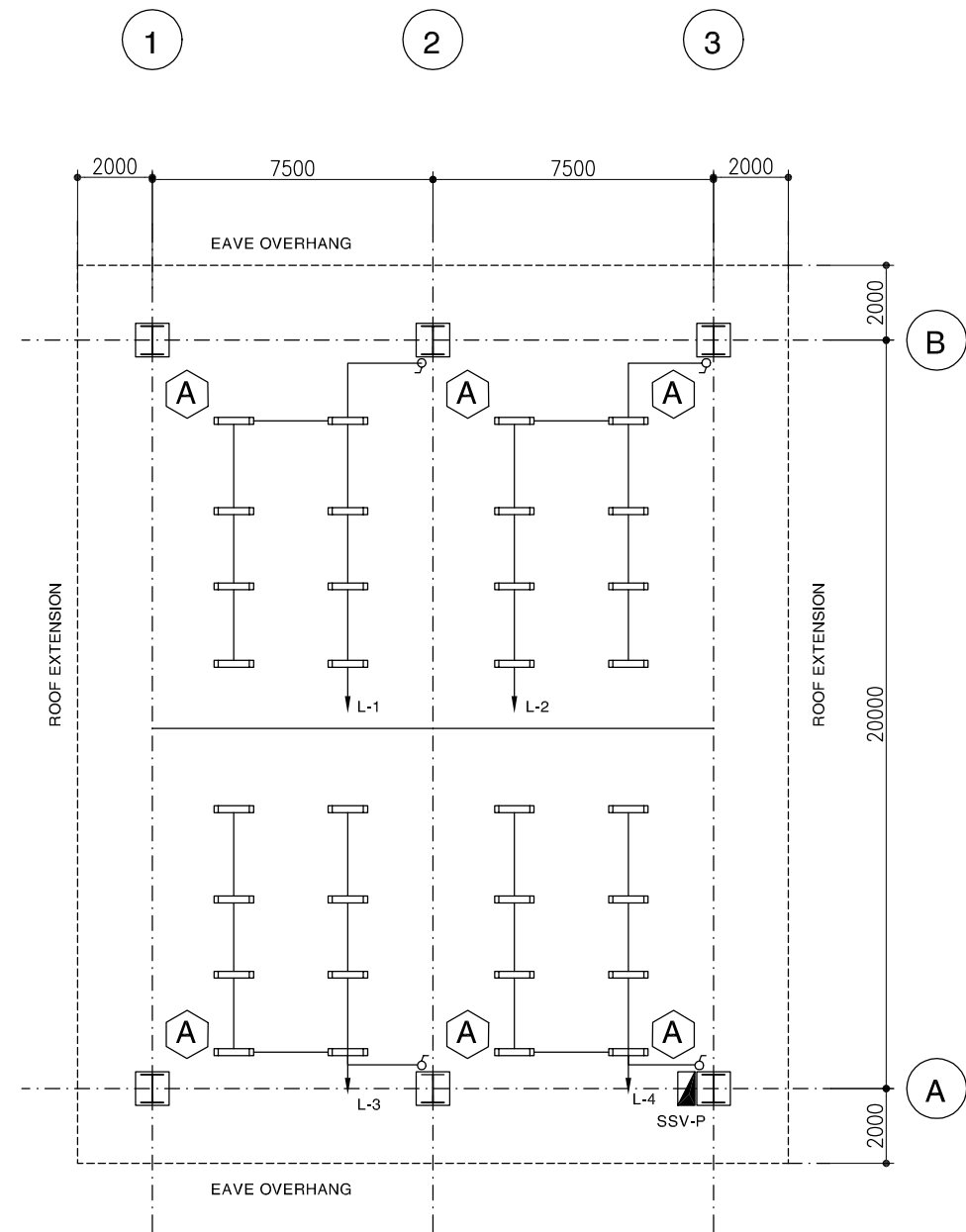


**SƠ ĐỒ ĐÓNG CỌC
PILING ELEVATION**

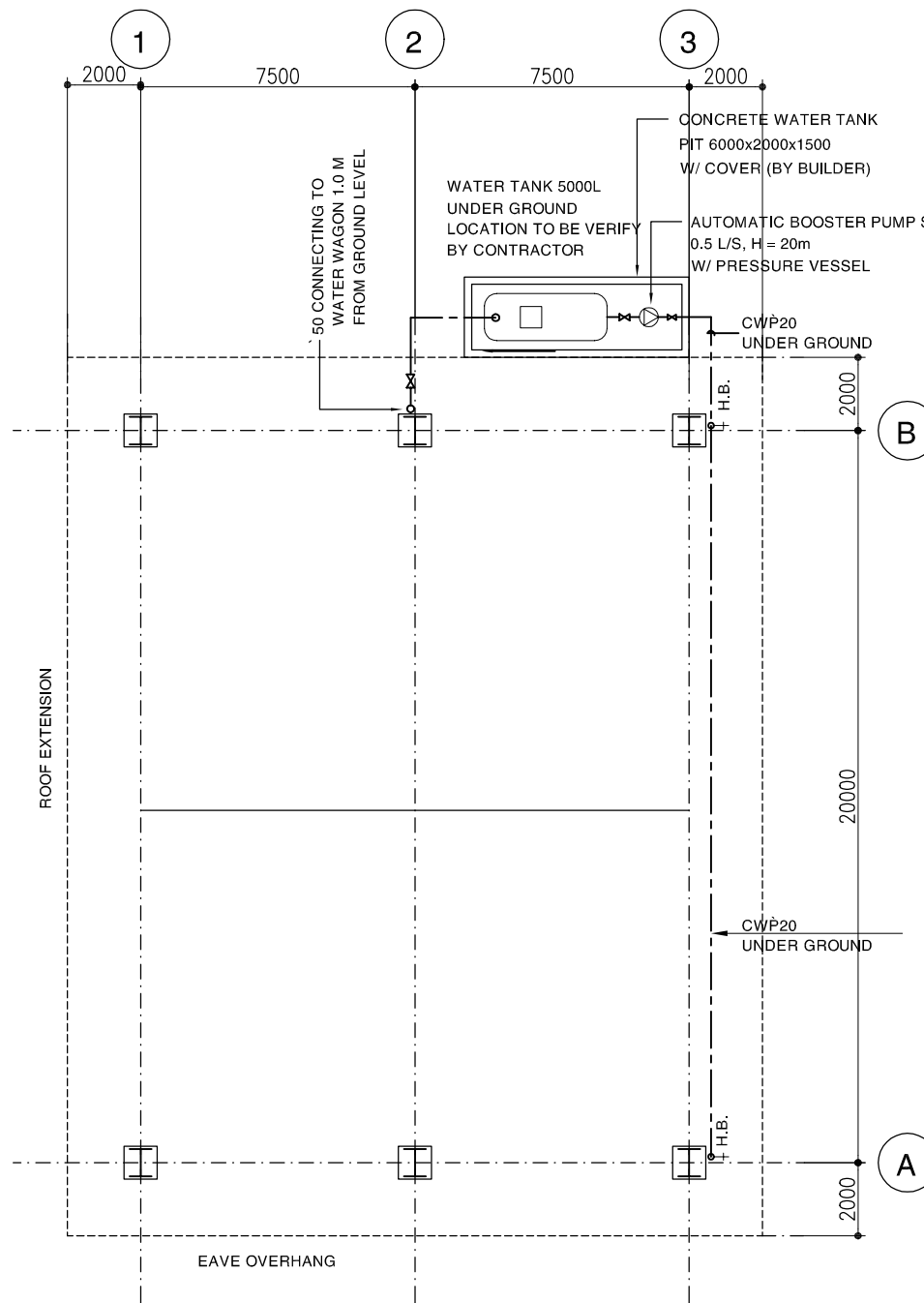
GHI CHÚ:
 - BÊ TÔNG LÓT ĐÁ 40X60, MÁC 100
 - BÊ TÔNG ĐÁ 10X20, MÁC 300
 - CỐT THÉP Ra=2000 Kg/cm2

NOTE:
 - LEAN CONCRETE STONE 40x60, GRADE 100
 - CONCRETE STONE 10x20, GRADE 300
 - REINFORCEMENT Ra=2000 Kg/cm2

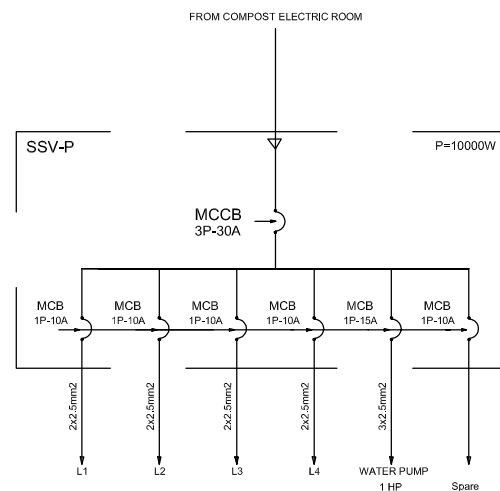
| NO. | DATE | DESCRIPTIONS | BY | APRO. |
|---|-------------------------|-----------------------------------|----|-------|
| REVISIONS | | | | |
| PROJECT MANAGEMENT UNIT FOR HO CHI MINH CITY WATER ENVIRONMENT IMPROVEMENT | | | | |
| THE DETAILED DESIGN STUDY ON HO CHI MINH CITY WATER ENVIRONMENT IMPROVEMENT PROJECT IN THE SOCIALIST REPUBLIC OF VIET NAM | | | | |
| PACKAGE E WASTEWATER TREATMENT PLANT | | | | |
| SUB-STORAGE VESSEL DETAIL OF FOUNDATIONS COLUMNS | | | | |
| SCALE : N.T.S | | | | |
| JAPAN INTERNATIONAL COOPERATION AGENCY (JICA) | | PACIFIC CONSULTANTS INTERNATIONAL | | |
| DESIGNED KIKUTA HIROSHI | CHECKED KONDO MASAMI | | | |
| DATE : JUNE 2001 | DWG. No. PE-WWTP-305-64 | | | |



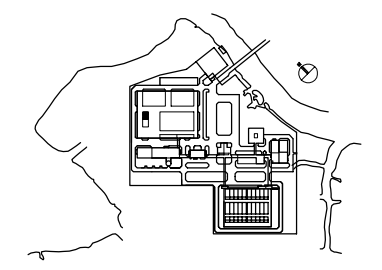
LIGHTING LAYOUT PLAN
SCALE : 1/100



PLUMPING PLAN
SCALE : 1/100



- LEGEND**
- ⊗ 400W HIGH PRESSURE SODIUM INDUSTRIAL HIGH BAY LUMINAIRE
 - 2x36W RECESSED FLOURESCENT.
 - ▬ 2x36W FLOURESCENT BATTEN (CEILING OR WALL MOUNTED)
 - 1x40W DOWNLIGHT (H WC)
 - 100W OUTDOOR LUMINAIRE, IP 56
 - 1x40W DOWNLIGHT (H WC)
 - ▬ 1x18W FLOURESCENT BATTEN, IP65
 - ▬ 2x36W FLOURESCENT BATTEN, IP65
 - 2x10W NON-MAINTAINED EXIT LIGHT
 - 16A DUPLEX SOCKET OUTLET
 - 16A DUPLEX SOCKET OUTLET FOR A/C UNIT
 - 1 WAY SINGLE SWITCH
 - DISTRIBUTION BOARD
 - DL : DOOR LOUVER
 - EAF : EXHAUST AIR FAN



| | | | | | |
|--|--|--|--|--|--|
| | | | | | |
| | | | | | |
| | | | | | |
| | | | | | |
| | | | | | |
| | | | | | |

| NO. | DATE | DESCRIPTIONS | BY | APRO. |
|---|------|--------------|----|-------|
| REVISIONS | | | | |
| PROJECT MANAGEMENT UNIT FOR HO CHI MINH CITY WATER ENVIRONMENT IMPROVEMENT | | | | |
| THE DETAILED DESIGN STUDY ON HO CHI MINH CITY WATER ENVIRONMENT IMPROVEMENT PROJECT IN THE SOCIALIST REPUBLIC OF VIET NAM | | | | |

PACKAGE
WASTEWATER TREATMENT PLANT
SUB-STORAGE VESSEL
LIGHTING LAYOUT & PLUMPING PLAN

| | |
|---|-------------------------|
| SCALE : 1/100 | |
| JAPAN INTERNATIONAL COOPERATION AGENCY (JICA) | |
| PACIFIC CONSULTANTS INTERNATIONAL | |
| DESIGNED KIKUTA HIROSHI | CHECKED KONDO MASAMI |
| DATE : JUNE 2001 | DWG. No. PE-WWTP-305-65 |