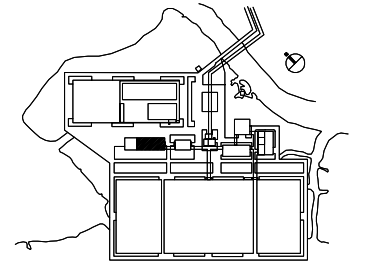


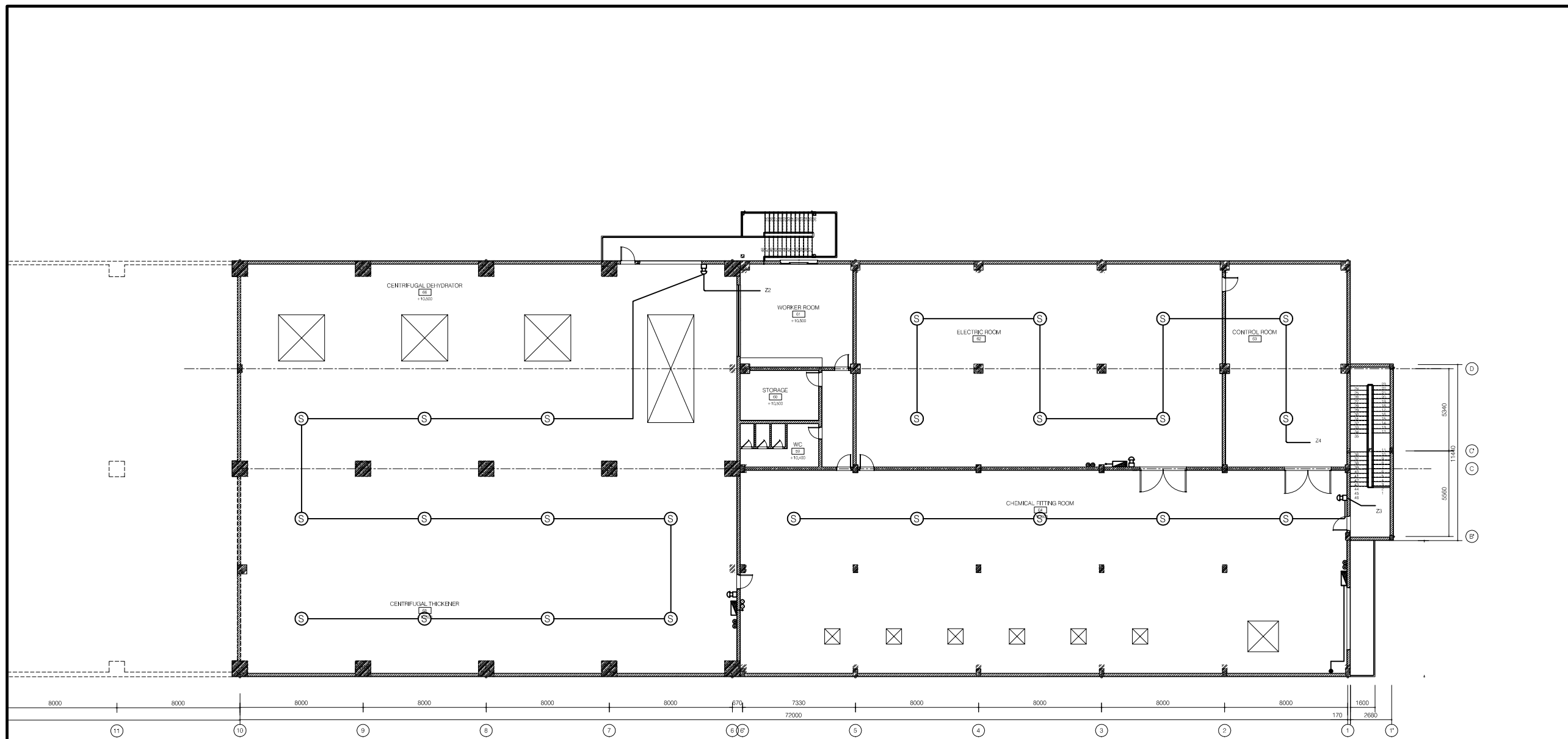
FIRST FLOOR- FIRE ALARM PLAN (UPPER - 2/2)

SCALE 1/100

- LEGEND**
- RX - TX BEAM TYPE
 - EMERGENCY BUTTON
 - FIRE ALARM BELL
 - HOSE REEL BOX
 - ABC FIRE EXTINGUISHER 8KG
 - SIREN
 - SMOKE DETECTOR ION-POINT TYPE

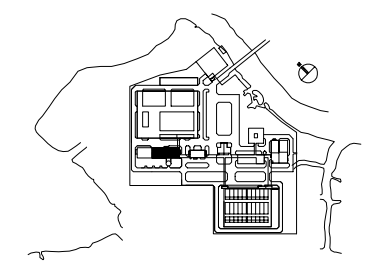


NO.	DATE	DESCRIPTIONS	BY	APPRO.
REVISIONS				
PROJECT MANAGEMENT UNIT FOR HO CHI MINH CITY WATER ENVIRONMENT IMPROVEMENT				
THE DETAILED DESIGN STUDY ON HO CHI MINH CITY WATER ENVIRONMENT IMPROVEMENT PROJECT IN THE SOCIALIST REPUBLIC OF VIET NAM				
PACKAGE E WASTEWATER TREATMENT PLANT DEWATERING & CENTRIFUGAL THICKENER BUILDING FIRST FLOOR PLAN (UPPER-2/2) FIRE ALARM PLAN				
SCALE : 1/100				
JAPAN INTERNATIONAL COOPERATION AGENCY (JICA)				
PACIFIC CONSULTANTS INTERNATIONAL				
DESIGNED KIKUTA HIROSHI		CHECKED KONDO MASAMI		
DATE : JUNE 2001		DWG. No. PE-WWTP-304-37		



SECOND FLOOR- FIRE ALARM PLAN
SCALE: 1/150

- LEGEND**
- ⊗ 400W HIGH PRESSURE SODIUM INDUSTRIAL HIGH BAY LUMINAIRE
 - 2x36W RECESSED FLOURESCENT
 - ▬ 2x36W FLOURESCENT BATTEN (CEILING OR WALL MOUNTED)
 - 1x40W DOWNLIGHT (in VIC)
 - 100W OUTDOOR LUMINAIRE, IP 56
 - 1x40W DOWNLIGHT (in VIC)
 - ▬ 1x18W FLOURESCENT BATTEN, IP65
 - ▬ 2x36W FLOURESCENT BATTEN, IP65
 - 2x10W NON-MAINTAINED EXIT LIGHT
 - 16A DUPLEX SOCKET OUTLET
 - 16A DUPLEX SOCKET OUTLET FOR A/C UNIT
 - 1 WAY SINGLE SWITCH
 - DISTRIBUTION BOARD
 - DL : DOOR LOUVER
 - EAF : EXHAUST AIR FAN



NO.	DATE	DESCRIPTIONS	BY	APRO.
-----	------	--------------	----	-------

REVISIONS

PROJECT MANAGEMENT UNIT FOR
HO CHI MINH CITY
WATER ENVIRONMENT IMPROVEMENT

THE DETAILED DESIGN STUDY ON HO CHI MINH CITY
WATER ENVIRONMENT IMPROVEMENT PROJECT
IN THE SOCIALIST REPUBLIC OF VIET NAM

PACKAGE E
WASTEWATER TREATMENT PLANT
DEWATERING AND CENTRIFUGAL THICKENER BUILDING
SECOND FLOOR
FIRE ALARM PLAN

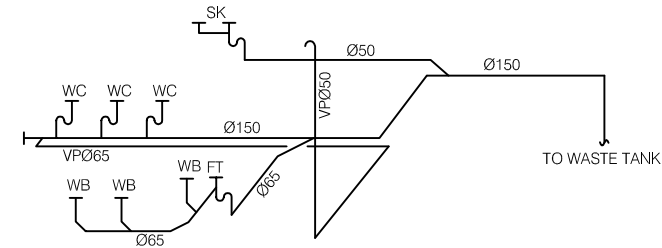
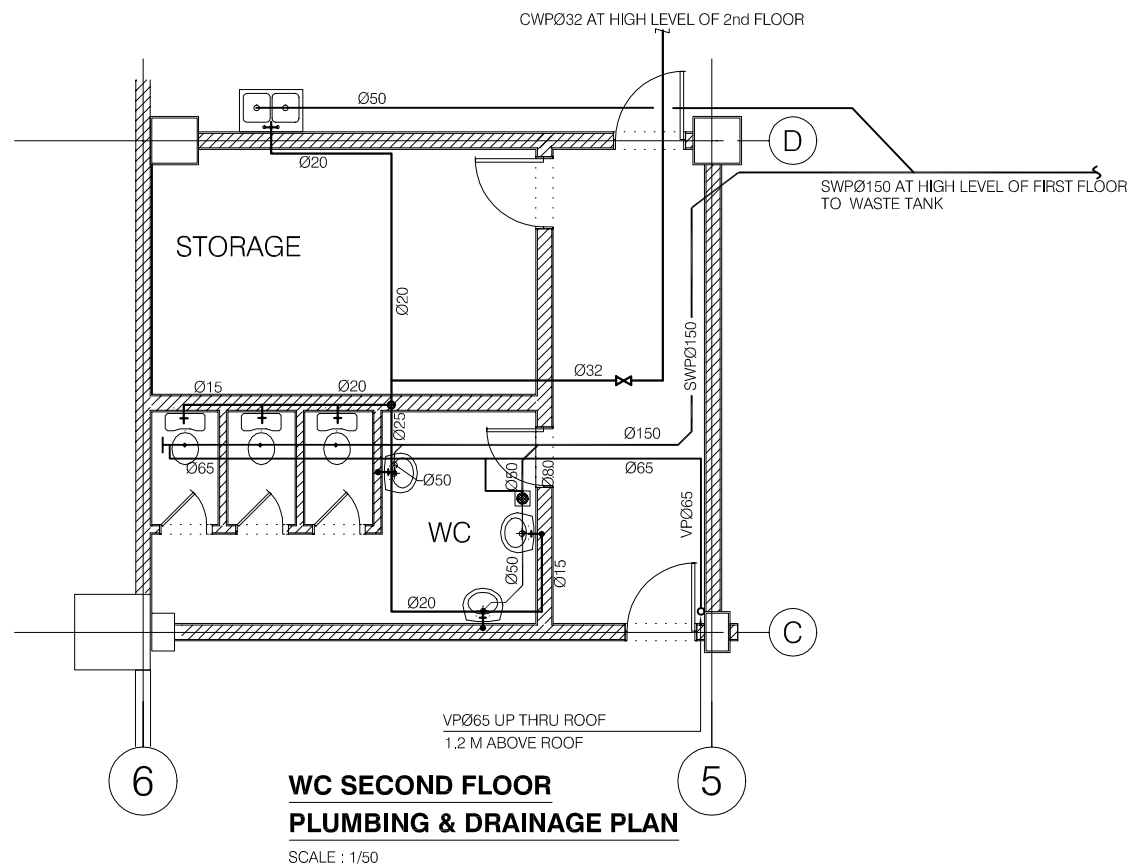
SCALE : 1/150

JAPAN INTERNATIONAL COOPERATION AGENCY (JICA)

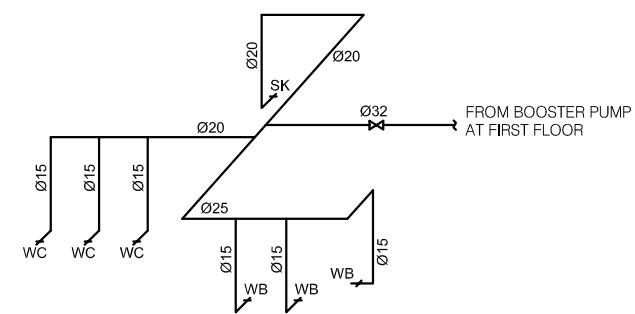
PACIFIC CONSULTANTS INTERNATIONAL

DESIGNED KIKUTA HIROSHI	CHECKED KONDO MASAMI
----------------------------	-------------------------

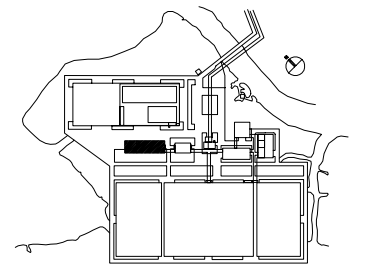
DATE : JUNE 2001 DWG. No. PE-WWTP-304-38



ISOMETRIC OF WASTE WATER SYSTEM

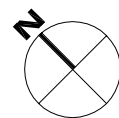
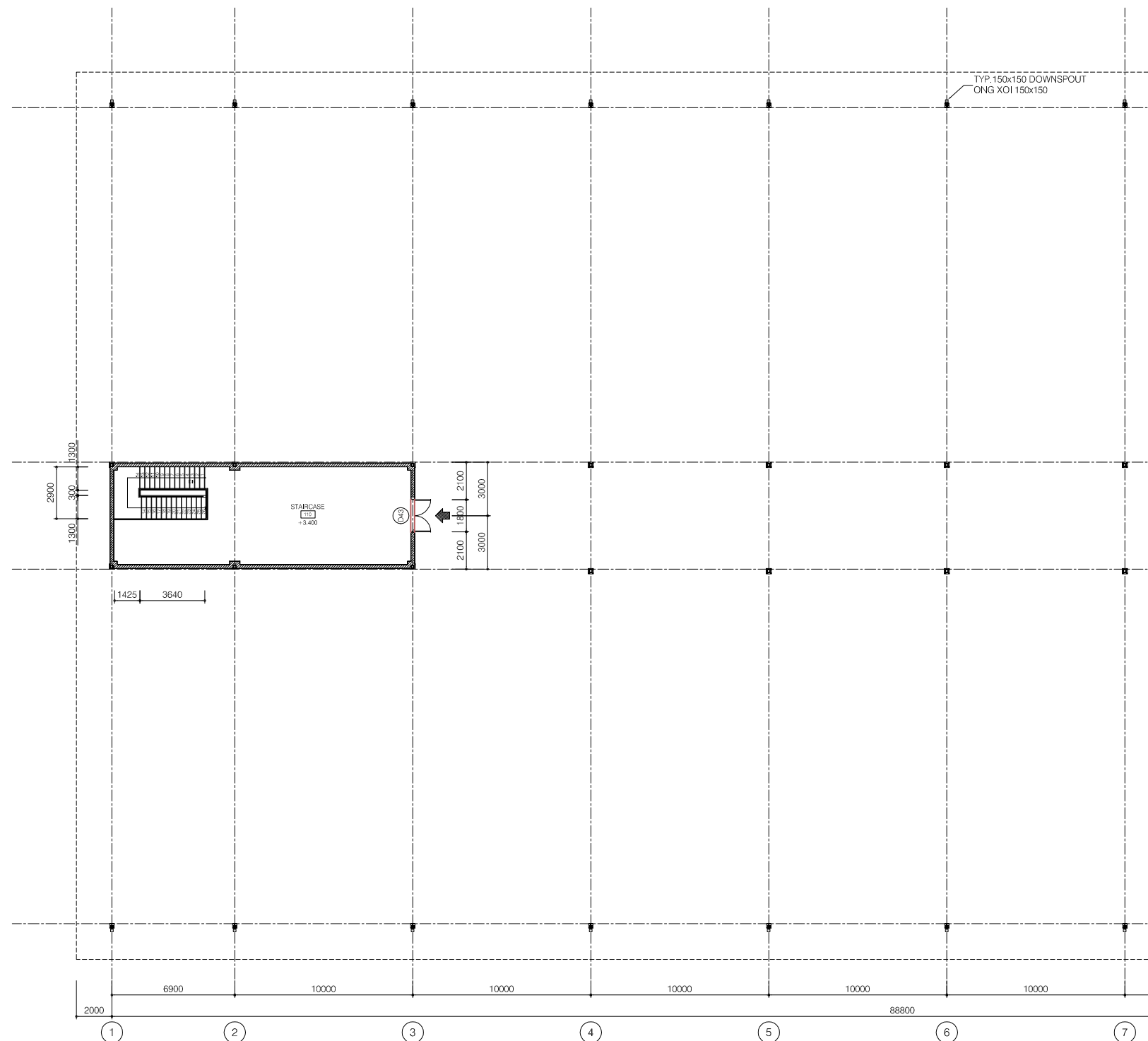


ISOMETRIC OF COLD WATER SUPPLY SYSTEM



NO.	DATE	DESCRIPTIONS	BY	APRO.
REVISIONS				
PROJECT MANAGEMENT UNIT FOR HO CHI MINH CITY WATER ENVIRONMENT IMPROVEMENT				
THE DETAILED DESIGN STUDY ON HO CHI MINH CITY WATER ENVIRONMENT IMPROVEMENT PROJECT IN THE SOCIALIST REPUBLIC OF VIET NAM				
PACKAGE E WASTEWATER TREATMENT PLANT DEWATERING AND CENTRIFUGAL THICKENER BUILDING - SECOND FLOOR PLUMBING AND DRAINAGE PLAN				
SCALE : 1/50				
JAPAN INTERNATIONAL COOPERATION AGENCY (JICA)				
PACIFIC CONSULTANTS INTERNATIONAL				
DESIGNED KIKUTA HIROSHI		CHECKED KONDO MASAMI		
DATE : JUNE 2001		DWG. No. PE-WWTP-304-40		

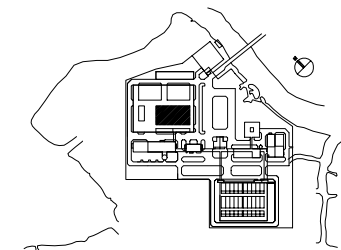
First fermentation tank



PARTIAL FIRST FLOOR PLAN (1/2)

LEGEND

- 190mm THK. BRICK WALL, 20THK CEM./SAND
 RENDERING ON SURFACE / TUONG GACH DAY
 190mm, TRAT VUA DAY 20 MOI MAT
- 90mm THK. BRICK WALL, 20THK CEM./SAND
 RENDERING ON SURFACE / TUONG GACH DAY
 90mm, TRAT VUA DAY 20 MOI MAT



NO.	DATE	DESCRIPTIONS	BY	APRO.

REVISIONS

PROJECT MANAGEMENT UNIT FOR
HO CHI MINH CITY
WATER ENVIRONMENT IMPROVEMENT

THE DETAILED DESIGN STUDY ON HO CHI MINH CITY
WATER ENVIRONMENT IMPROVEMENT PROJECT
IN THE SOCIALIST REPUBLIC OF VIET NAM

PACKAGE E
WASTEWATER TREATMENT PLANT
FIRST FERMENTATION TANK
PARTIAL FIRST FLOOR PLAN (1/2)

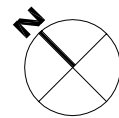
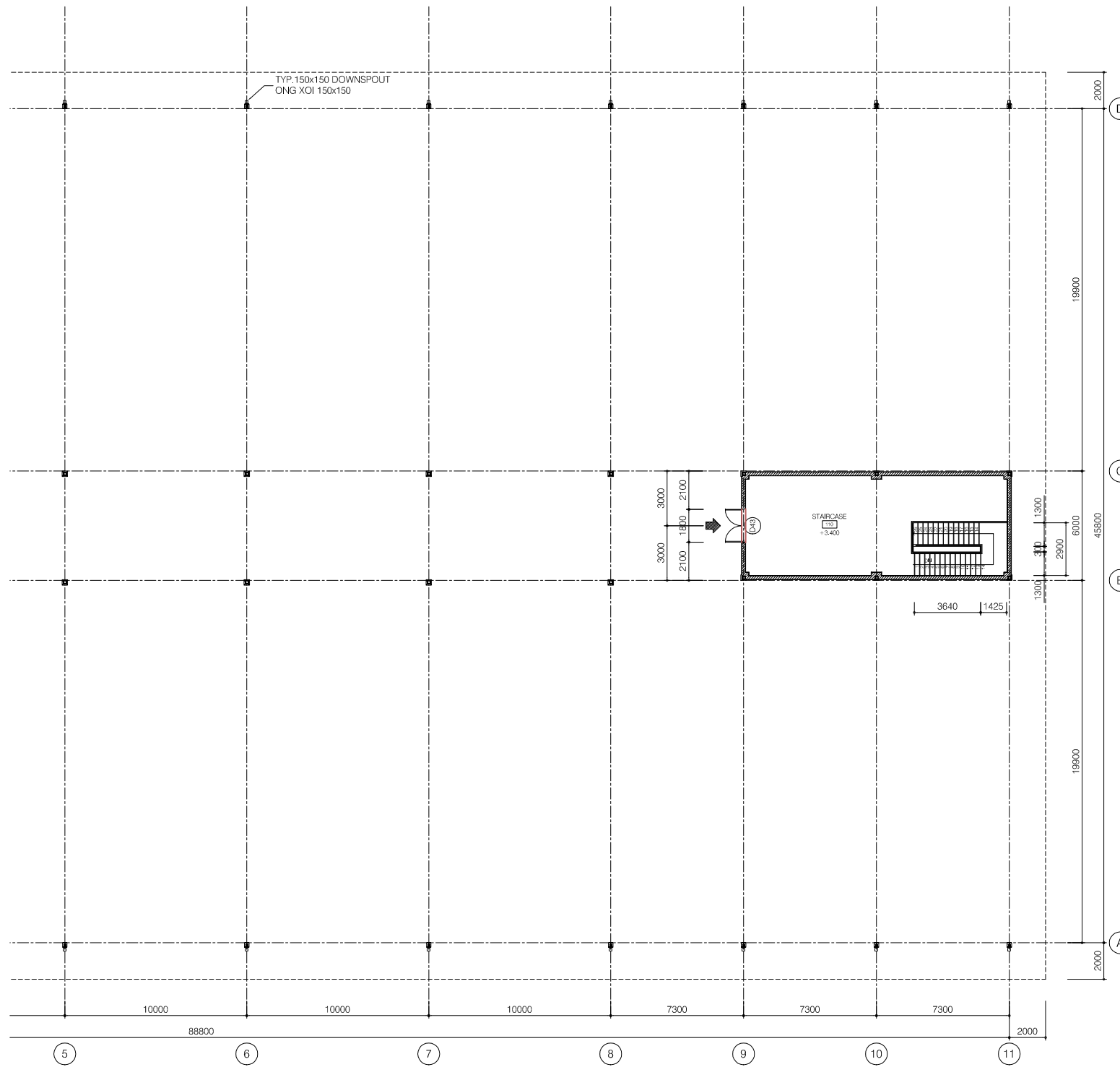
SCALE : 1/150

JAPAN INTERNATIONAL COOPERATION
AGENCY (JICA)

PACIFIC CONSULTANTS INTERNATIONAL

DESIGNED KIKUTA HIROSHI	CHECKED KONDO MASAMI
----------------------------	-------------------------

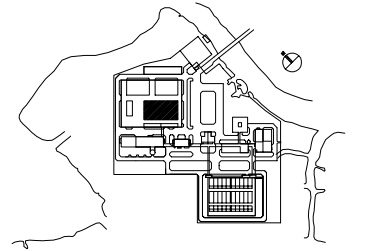
DATE : JUNE 2001 DWG. No. PE-WWTP-305-01



PARTIAL FIRST FLOOR PLAN (2/2)

LEGEND

- 190mm THK. BRICK WALL, 20THK CEM./SAND RENDERING ON SURFACE / TUONG GACH DAY 190mm, TRAT VUA DAY 20 MOI MAT
- 90mm THK. BRICK WALL, 20THK CEM./SAND RENDERING ON SURFACE / TUONG GACH DAY 90mm, TRAT VUA DAY 20 MOI MAT



NO.	DATE	DESCRIPTIONS	BY	APRO.

REVISIONS				
PROJECT MANAGEMENT UNIT FOR HO CHI MINH CITY WATER ENVIRONMENT IMPROVEMENT				
THE DETAILED DESIGN STUDY ON HO CHI MINH CITY WATER ENVIRONMENT IMPROVEMENT PROJECT IN THE SOCIALIST REPUBLIC OF VIET NAM				
PACKAGE E WASTEWATER TREATMENT PLANT FIRST FERMENTATION TANK PARTIAL FIRST FLOOR PLAN (2/2)				

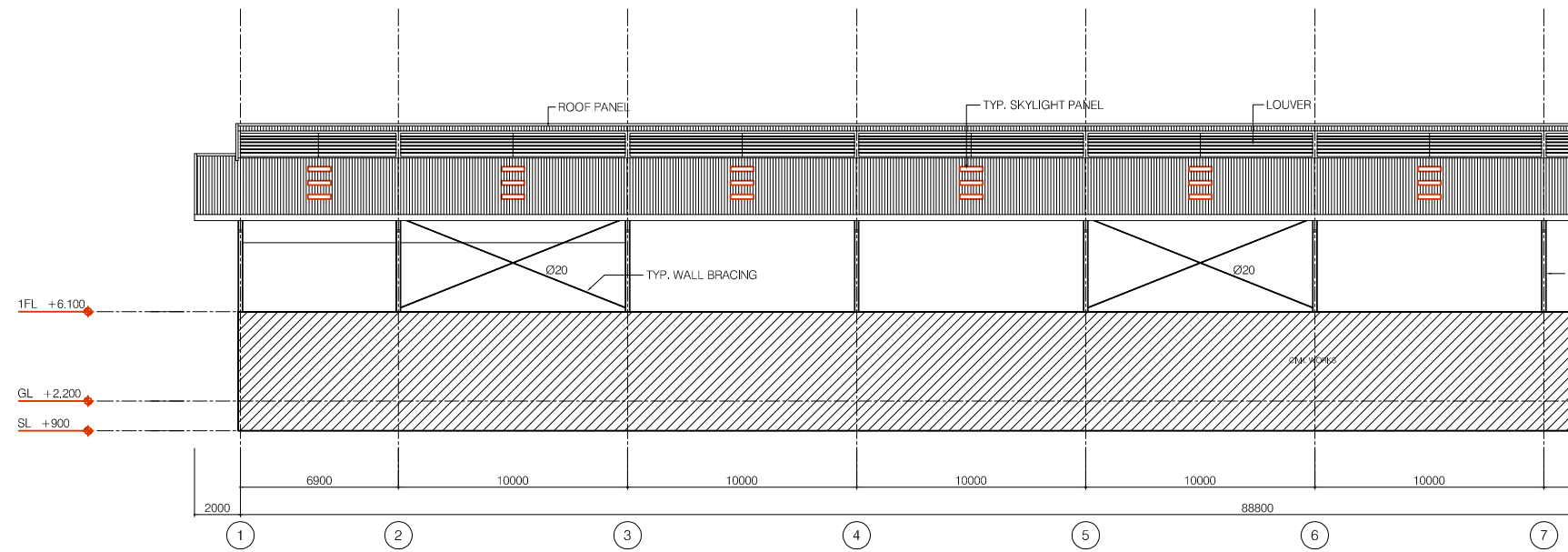
SCALE : 1/150

JAPAN INTERNATIONAL COOPERATION AGENCY (JICA)

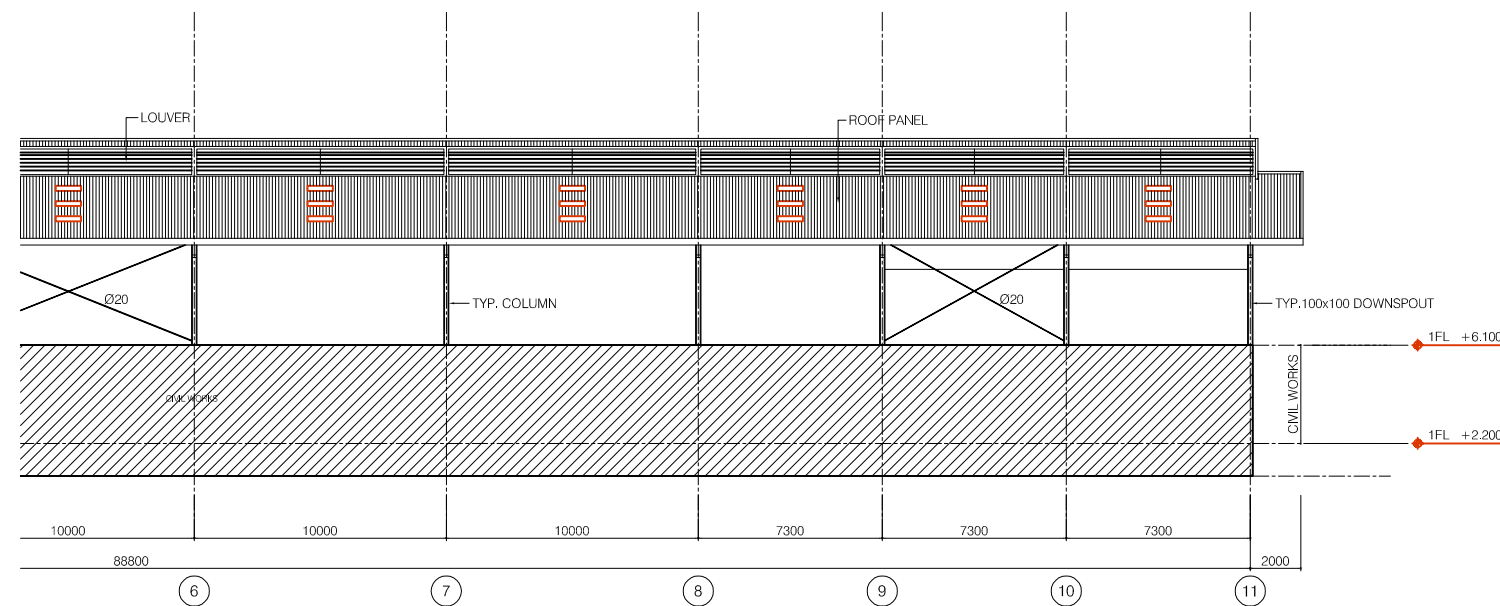
PACIFIC CONSULTANTS INTERNATIONAL

DESIGNED KIKUTA HIROSHI	CHECKED KONDO MASAMI
----------------------------	-------------------------

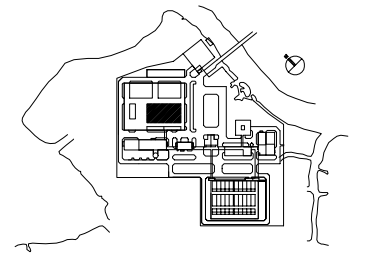
DATE : JUNE 2001 DWG. No. PE-WWTP-305-02



PARTIAL ELEVATION LINE A (1/2)



PARTIAL ELEVATION LINE A (2/2)



NO.	DATE	DESCRIPTIONS	BY	APPRO.

REVISIONS

PROJECT MANAGEMENT UNIT FOR
HO CHI MINH CITY
WATER ENVIRONMENT IMPROVEMENT

THE DETAILED DESIGN STUDY ON HO CHI MINH CITY
WATER ENVIRONMENT IMPROVEMENT PROJECT
IN THE SOCIALIST REPUBLIC OF VIET NAM

PACKAGE E
WASTEWATER TREATMENT PLANT
FIRST FERMENTATION TANK
PARTIAL ELEVATION LINE A

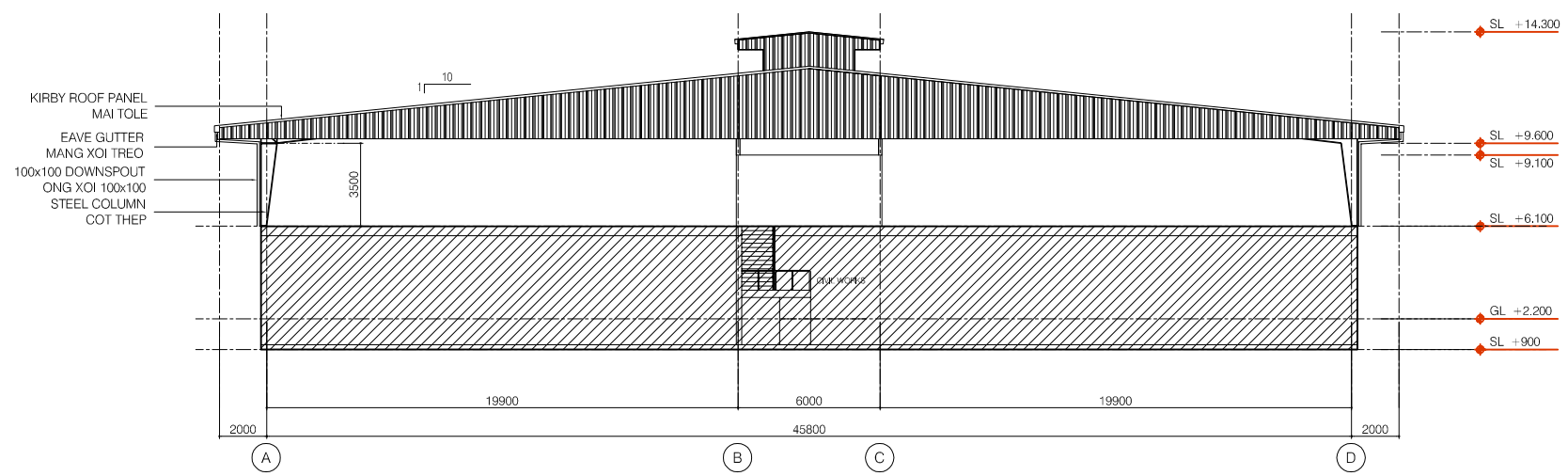
SCALE : 1/150

JAPAN INTERNATIONAL COOPERATION AGENCY (JICA)

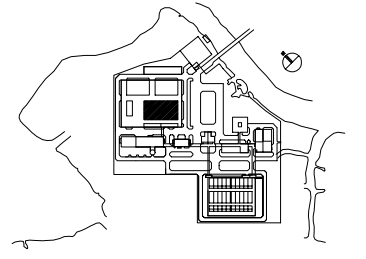
PACIFIC CONSULTANTS INTERNATIONAL

DESIGNED KIKUTA HIROSHI	CHECKED KONDO MASAMI
----------------------------	-------------------------

DATE : JUNE 2001 DWG. No. PE-WWTP-305-03



ELEVATION LINE 1&11



NO.	DATE	DESCRIPTIONS	BY	APRO.
-----	------	--------------	----	-------

REVISIONS

PROJECT MANAGEMENT UNIT FOR
HO CHI MINH CITY
WATER ENVIRONMENT IMPROVEMENT

THE DETAILED DESIGN STUDY ON HO CHI MINH CITY
WATER ENVIRONMENT IMPROVEMENT PROJECT
IN THE SOCIALIST REPUBLIC OF VIET NAM

PACKAGE E
WASTEWATER TREATMENT PLANT
FIRST FERMENTATION TANK
ELEVATION LINE 1

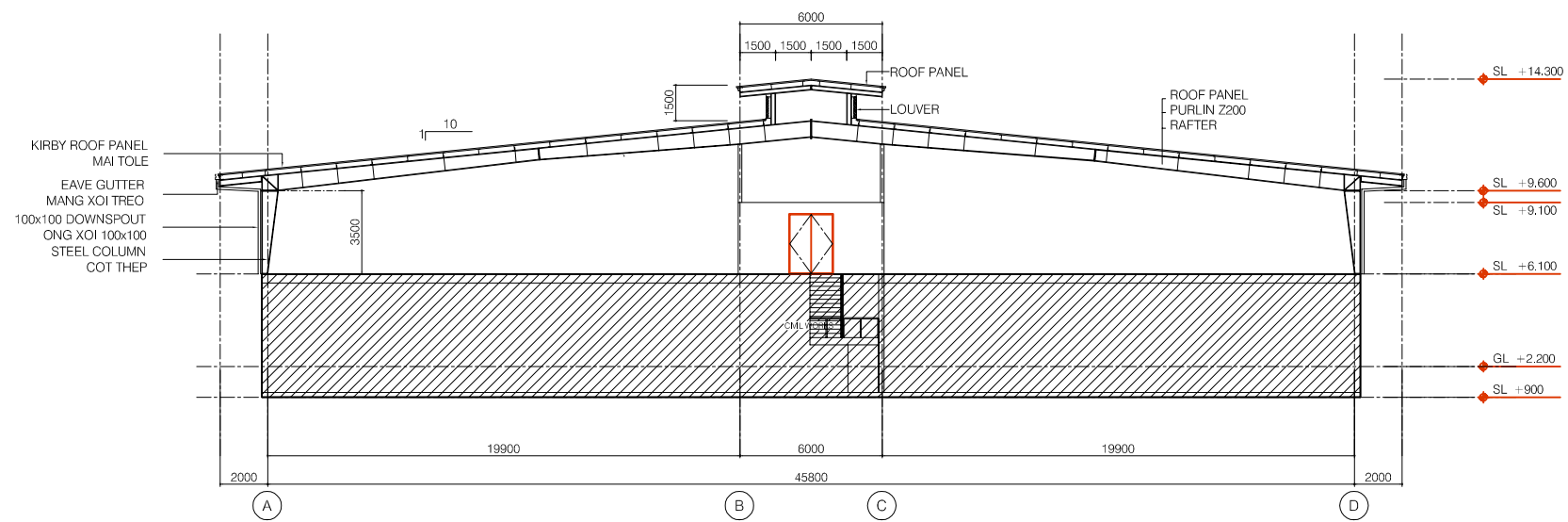
SCALE : 1/150

JAPAN INTERNATIONAL COOPERATION AGENCY (JICA)

PACIFIC CONSULTANTS INTERNATIONAL

DESIGNED KIKUTA HIROSHI	CHECKED KONDO MASAMI
----------------------------	-------------------------

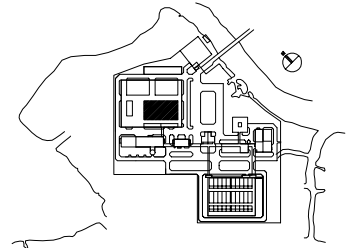
DATE : JUNE 2001 DWG. No. PE-WWTP-305-04



CROSS SECTION

KIRBY ROOF PANEL
MAI TOLE
EAVE GUTTER
MANG XOI TREO
100x100 DOWNSPOUT
ONG XOI 100x100
STEEL COLUMN
COT THEP

ROOF PANEL
LOUVER
ROOF PANEL
PURLIN Z200
RAFTER



NO.	DATE	DESCRIPTIONS	BY	APRO.
-----	------	--------------	----	-------

REVISIONS

PROJECT MANAGEMENT UNIT FOR
HO CHI MINH CITY
WATER ENVIRONMENT IMPROVEMENT

THE DETAILED DESIGN STUDY ON HO CHI MINH CITY
WATER ENVIRONMENT IMPROVEMENT PROJECT
IN THE SOCIALIST REPUBLIC OF VIET NAM

PACKAGE E
WASTEWATER TREATMENT PLANT
FIRST FERMENTATION TANK
CROSS SECTION

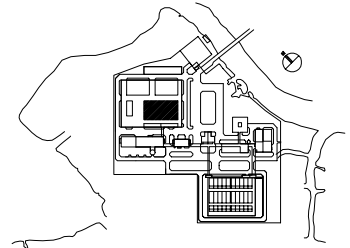
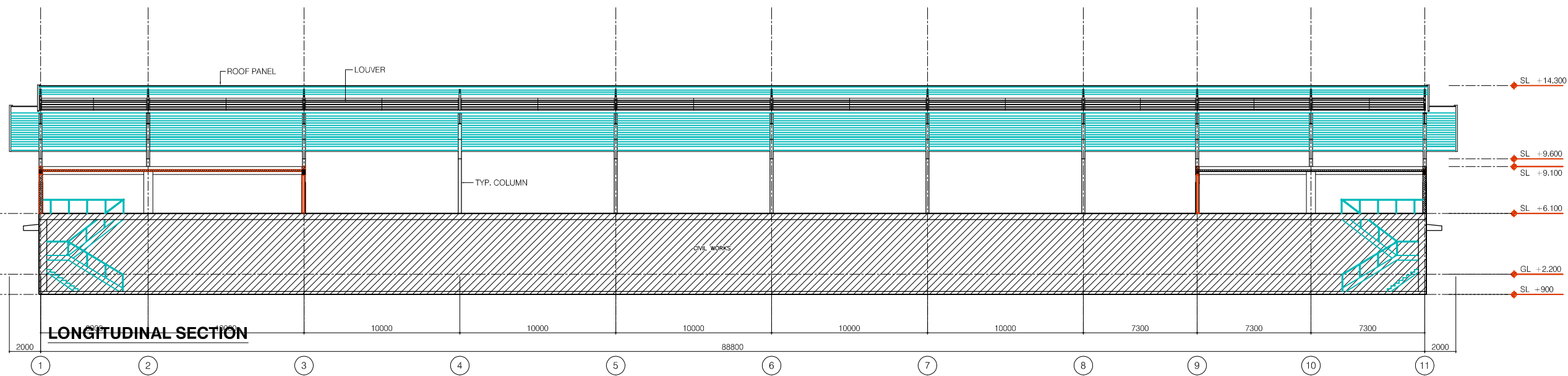
SCALE : 1/150

JAPAN INTERNATIONAL COOPERATION AGENCY (JICA)

PACIFIC CONSULTANTS INTERNATIONAL

DESIGNED KIKUTA HIROSHI	CHECKED KONDO MASAMI
----------------------------	-------------------------

DATE : JUNE 2001	DWG. No. PE-WWTP-305-05
------------------	-------------------------



NO.	DATE	DESCRIPTIONS	BY	APPRO.
-----	------	--------------	----	--------

REVISIONS

PROJECT MANAGEMENT UNIT FOR
HO CHI MINH CITY
WATER ENVIRONMENT IMPROVEMENT

THE DETAILED DESIGN STUDY ON HO CHI MINH CITY
WATER ENVIRONMENT IMPROVEMENT PROJECT
IN THE SOCIALIST REPUBLIC OF VIET NAM

PACKAGE E
WASTEWATER TREATMENT PLANT
FIRST FERMENTATION TANK
LONGITUDINAL SECTION

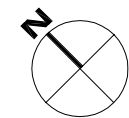
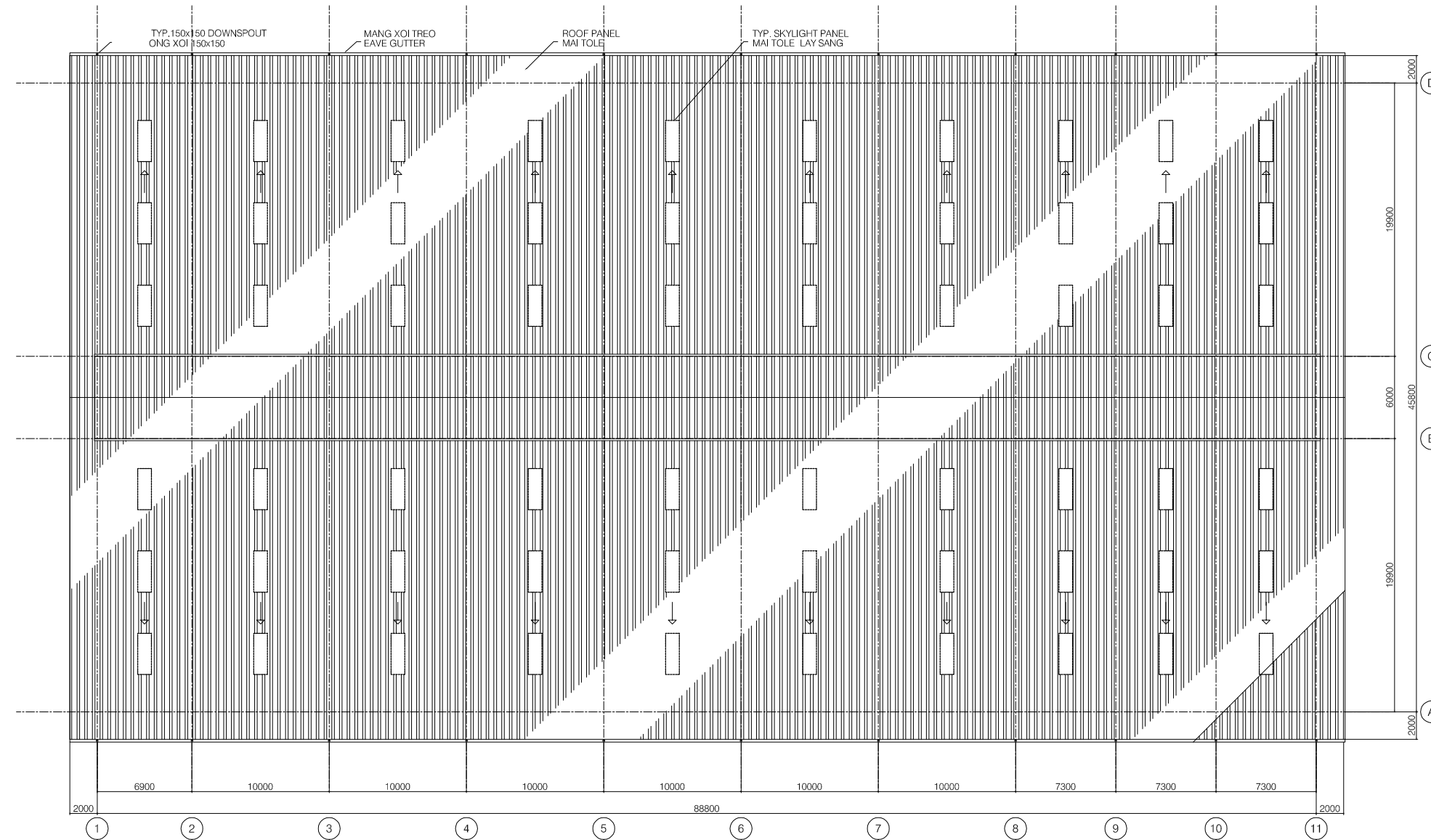
SCALE : 1/150

JAPAN INTERNATIONAL COOPERATION AGENCY (JICA)

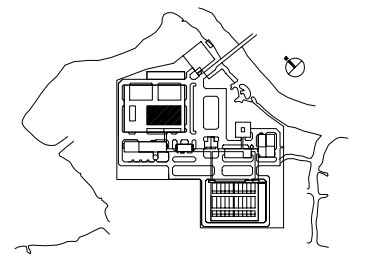
PACIFIC CONSULTANTS INTERNATIONAL

DESIGNED KIKUTA HIROSHI	CHECKED KONDO MASAMI
----------------------------	-------------------------

DATE : JUNE 2001 DWG. No. PE-WWTP-305-06



ROOF PLAN



NO.	DATE	DESCRIPTIONS	BY	APRO.
-----	------	--------------	----	-------

REVISIONS

PROJECT MANAGEMENT UNIT FOR
HO CHI MINH CITY
WATER ENVIRONMENT IMPROVEMENT

THE DETAILED DESIGN STUDY ON HO CHI MINH CITY
WATER ENVIRONMENT IMPROVEMENT PROJECT
IN THE SOCIALIST REPUBLIC OF VIET NAM

PACKAGE E
WASTEWATER TREATMENT PLANT
FIRST FERMENTATION TANK
ROOF PLAN

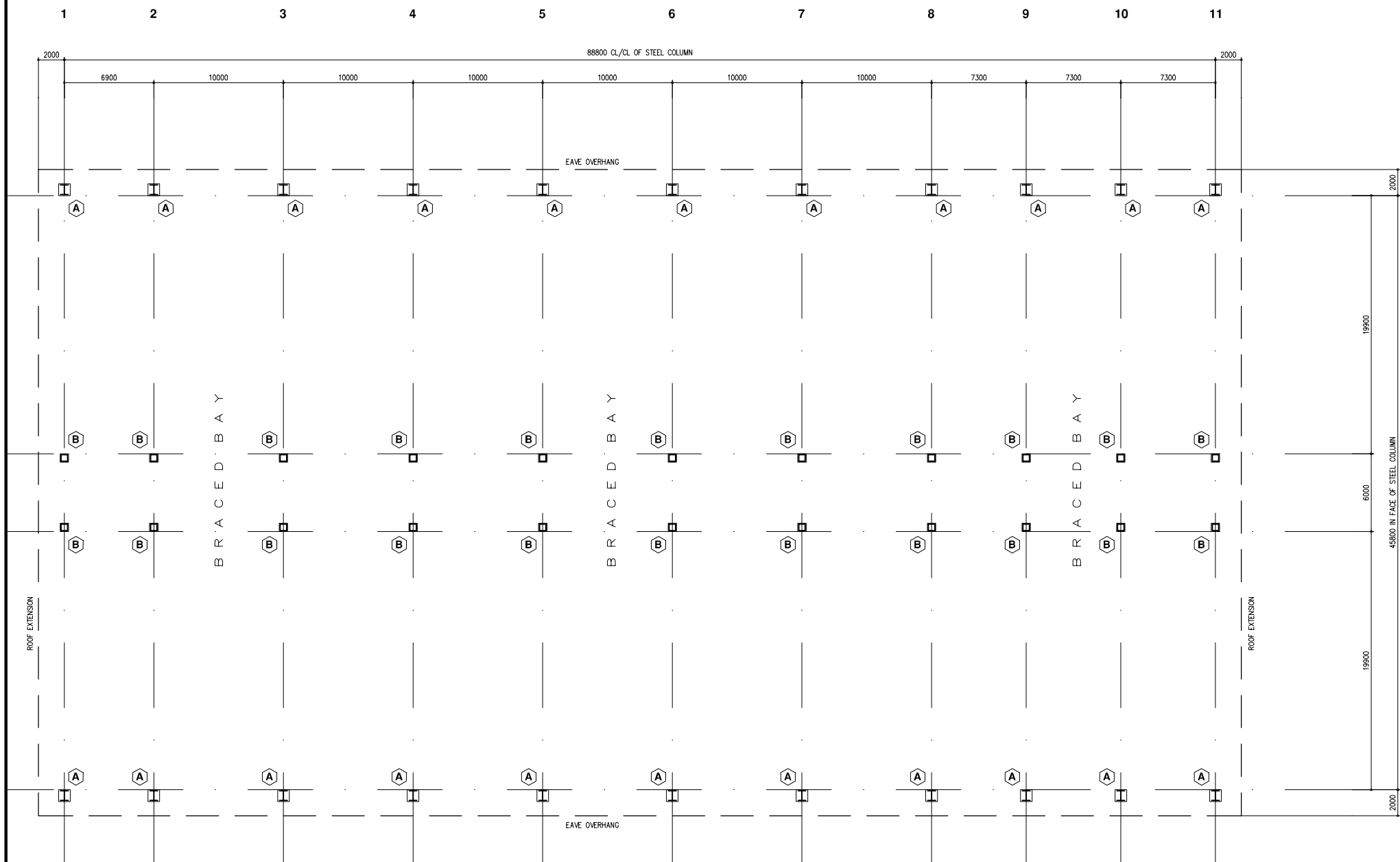
SCALE : 1/200

JICA JAPAN INTERNATIONAL COOPERATION
AGENCY (JICA)

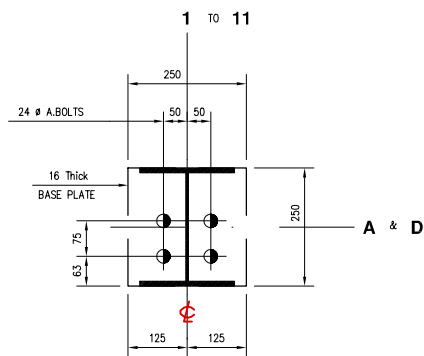
PACIFIC CONSULTANTS INTERNATIONAL

DESIGNED KIKUTA HIROSHI	CHECKED KONDO MASAMI
----------------------------	-------------------------

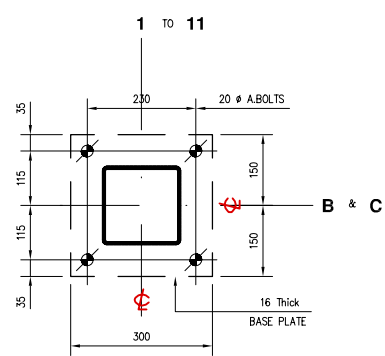
DATE : JUNE 2001 DWG. No. PE-WWTP-305-07



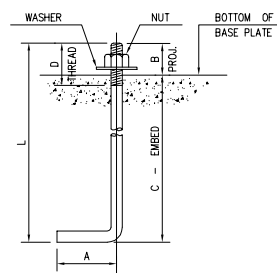
PRIMARY STEEL PLAN



DETAIL - A



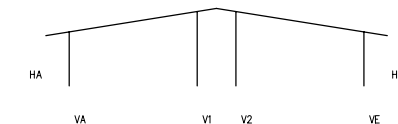
DETAIL - B



ANCHOR BOLT SETTING

ANCHOR BOLT SCHEDULE -- BOLTS BY:--

SYMBOL	QUANTITY	DIAMETER	L	A	B	C	D
⊕	--	16	400	100	65	335	75
⊕	--	20	500	120	65	435	75
⊕	--	24	650	150	65	585	75
⊕	--	32	950	200	75	875	100
⊕	--	M10x90 Expansion Bolts (HILTI HSA STUD TYPE - New Version)					

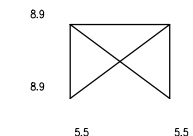


MAIN FRAME REACTIONS (KN)

COLUMN BASE REACTIONS FOR LOAD COMBINATIONS

	HORZ. KN	VERT. KN	MOMT. KN-M	LOAD COMBINATION
LEFT EXT. COLUMN	HA	VA	0.00	CASE 1--1.0DL + 1.0LL
	-29.08	-34.51	0.00	CASE 2--1.0DL + 1.0WLL
LEFT EXT. COLUMN	HE	VE	0.00	CASE 1--1.0DL + 1.0LL
	-65.66	-20.58	0.00	CASE 2--1.0DL + 1.0WLL
INT. COLUMN - 1		V1	0.00	CASE 1--1.0DL + 1.0LL
	0.00	-49.36	0.00	CASE 2--1.0DL + 1.0WLL
INT. COLUMN - 2		V2	0.00	CASE 1--1.0DL + 1.0LL
	0.00	-5.17	0.00	CASE 2--1.0DL + 1.0WLL

NOTE:
-- PLEASE MAKE SURE THAT ALL CONCRETE COLUMNS ARE DESIGNED FOR HORIZONTAL AS WELL AS VERTICAL REACTIONS FROM FRAMES AT TOP OF CONCRETE COLUMN.



BRACED BAY REACTIONS

DESIGN LOADS:
DL = 0.1KN/M2 + SELF WEIGHT OF STRUCTURE FOR FRAME
LL = 0.57KN/M2
WIND SPEED = 31.0M/SEC.

DESIGN CRITERIA:
-- METAL BUILDING MANUFACTURERS ASSOCIATION (MBMA)
-- AMERICAN INSTITUTE OF STEEL CONSTRUCTION (AISC)
-- AMERICAN IRON AND STEEL INSTITUTE (AISI)
-- AMERICAN WELDING SOCIETY (AWS)

-- ALL DIMENSIONS ARE IN MILLIMETER
-- DO NOT SCALE DRAWING
-- THIS DRAWING FOR PROPOSAL ONLY
-- NOT FOR CONSTRUCTION

-- ALL STEEL COLUMNS SIT ON TOP OF R.C. WALLS AT LEVEL +6100

NO.	DATE	DESCRIPTIONS	BY	APRO.

REVISIONS

PROJECT MANAGEMENT UNIT FOR
HO CHI MINH CITY
WATER ENVIRONMENT IMPROVEMENT

THE DETAILED DESIGN STUDY ON HO CHI MINH CITY
WATER ENVIRONMENT IMPROVEMENT PROJECT
IN THE SOCIALIST REPUBLIC OF VIET NAM

PACKAGE E
WASTEWATER TREATMENT PLANT
**FIRST FERMENTATION TANK
STEEL COLUMN PLAN &
COLUMN DETAILS**

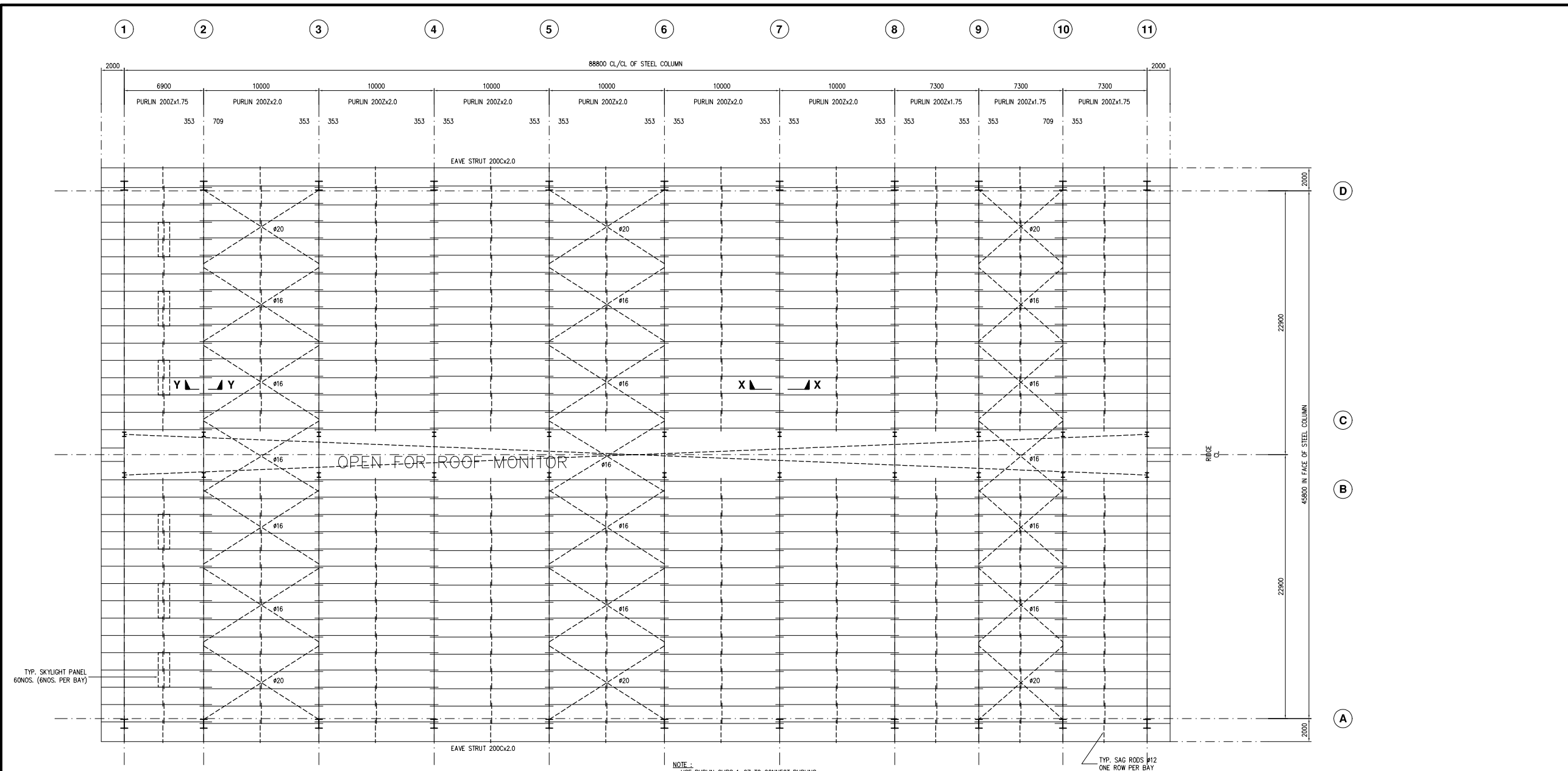
SCALE : N.T.S

JICA JAPAN INTERNATIONAL COOPERATION AGENCY (JICA)

PACIFIC CONSULTANTS INTERNATIONAL

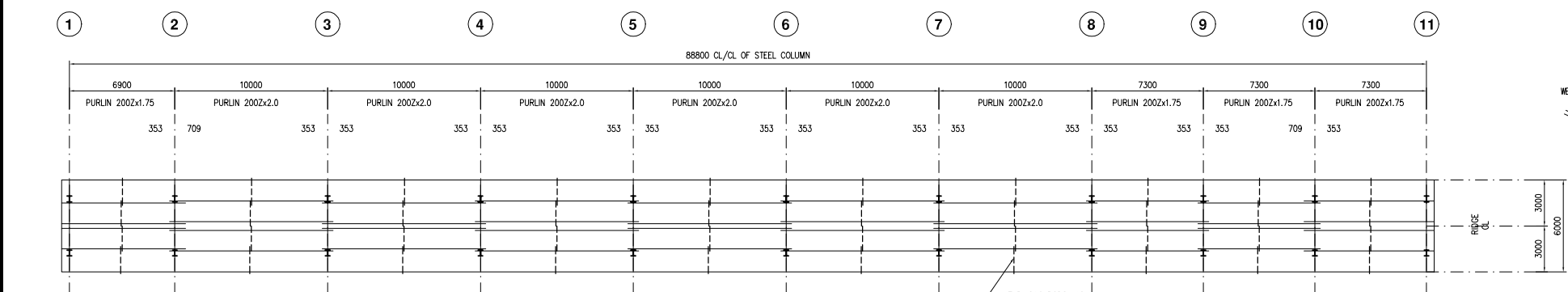
DESIGNED: KIKUTA HIROSHI
CHECKED: KONDO MASAMI

DATE : JUNE 2001
DWG. No. PE-WWTP-305-08

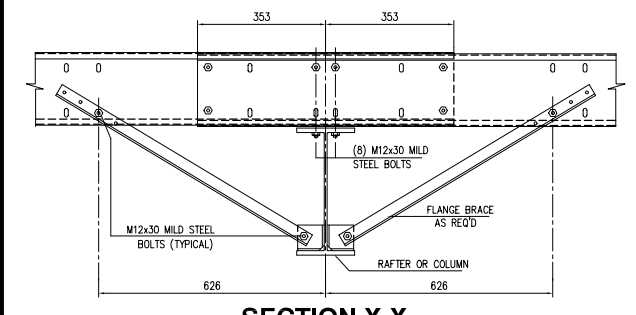


ROOF FRAMING PLAN

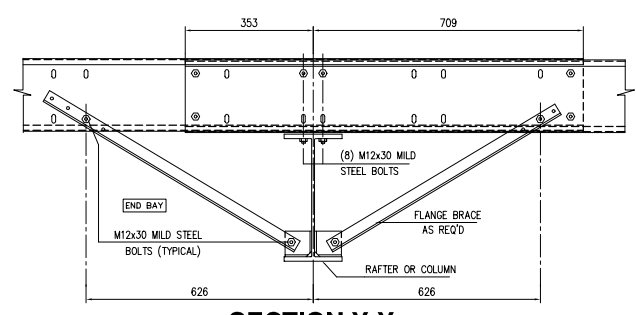
NOTE :
 - USE PURLIN CLIPS 1-27 TO CONNECT PURLINS.
 - USE EAVE STRUT CLIPS 1-48 TO CONNECT EAVE STRUT.



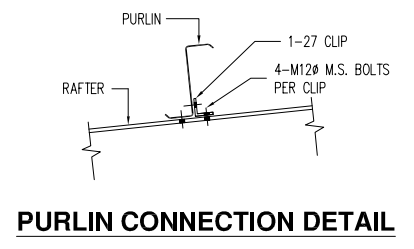
ROOF MONITOR FRAMING PLAN



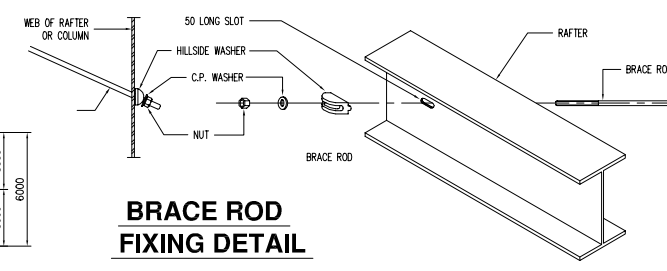
SECTION X-X



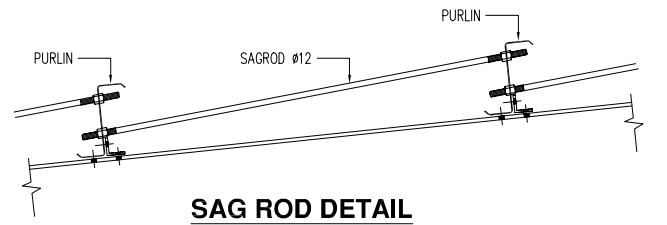
SECTION Y-Y



PURLIN CONNECTION DETAIL



BRACE ROD FIXING DETAIL



SAG ROD DETAIL

ALL HIGH STRENGTH BOLTS SHALL HAVE 2 HIGH STRENGTH WASHERS AND ONE HIGH STRENGTH NUT, AND SHALL BE INSTALLED IN ACCORDANCE WITH ASTM A325 BOLT SPECIFICATIONS.

TYPICAL BUILT-UP SECTION DESIGNATION SYSTEM

Eg.: Size 200 x 10 x 5 @ 400
 Flanges = 200mm Wide x 10 mm thick.
 Web = 5 mm thick.
 Depth of Web = 400 mm.

Designation	Depth	Width
WBx10	200	100
WBx18	208	133
WBx24	200	165
WBx31	203	203
W12x14	302	100
W12x22	311	100
W14x82	363	257

Designation	Depth	Width
C8x11.5	203	57
C10x15.3	254	66
C12x20.7	305	75
C15x33.9	381	86
C20x75	200	75
C30x100	300	100

DESIGN LOADS :
 DL = 0.1KN/M² + SELF WEIGHT OF STRUCTURE FOR FRAME
 LL = 0.57KN/M²
 WIND SPEED = 31.0M/SEC.

DESIGN CRITERIA :
 - METAL BUILDING MANUFACTURERS ASSOCIATION (MBMA)
 - AMERICAN INSTITUTE OF STEEL CONSTRUCTION (AISC)
 - AMERICAN IRON AND STEEL INSTITUTE (AISI)
 - AMERICAN WELDING SOCIETY (AWS)

- ALL DIMENSIONS ARE IN MILLIMETER
 - DO NOT SCALE DRAWING
 - THIS DRAWING FOR PROPOSAL ONLY
 - NOT FOR CONSTRUCTION

- ALL STEEL COLUMNS SIT ON TOP OF R.C. WALLS AT LEVEL +6100

NO.	DATE	DESCRIPTIONS	BY	APRO.

REVISIONS

PROJECT MANAGEMENT UNIT FOR
 HO CHI MINH CITY
 WATER ENVIRONMENT IMPROVEMENT

THE DETAILED DESIGN STUDY ON HO CHI MINH CITY
 WATER ENVIRONMENT IMPROVEMENT PROJECT
 IN THE SOCIALIST REPUBLIC OF VIET NAM

PACKAGE E
 WASTEWATER TREATMENT PLANT
 FIRST FERMENTATION TANK
 ROOF FRAMING PLAN &
 ROOF DETAILS

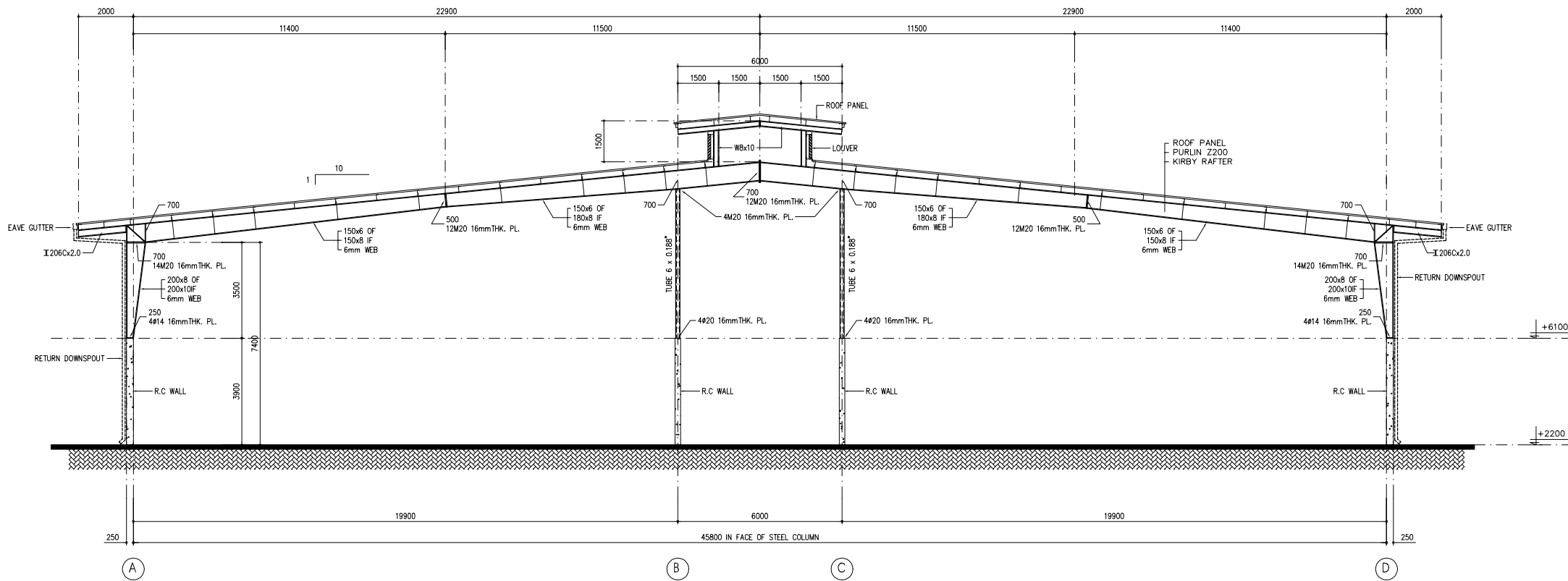
SCALE : N.T.S

JICA JAPAN INTERNATIONAL COOPERATION AGENCY (JICA)

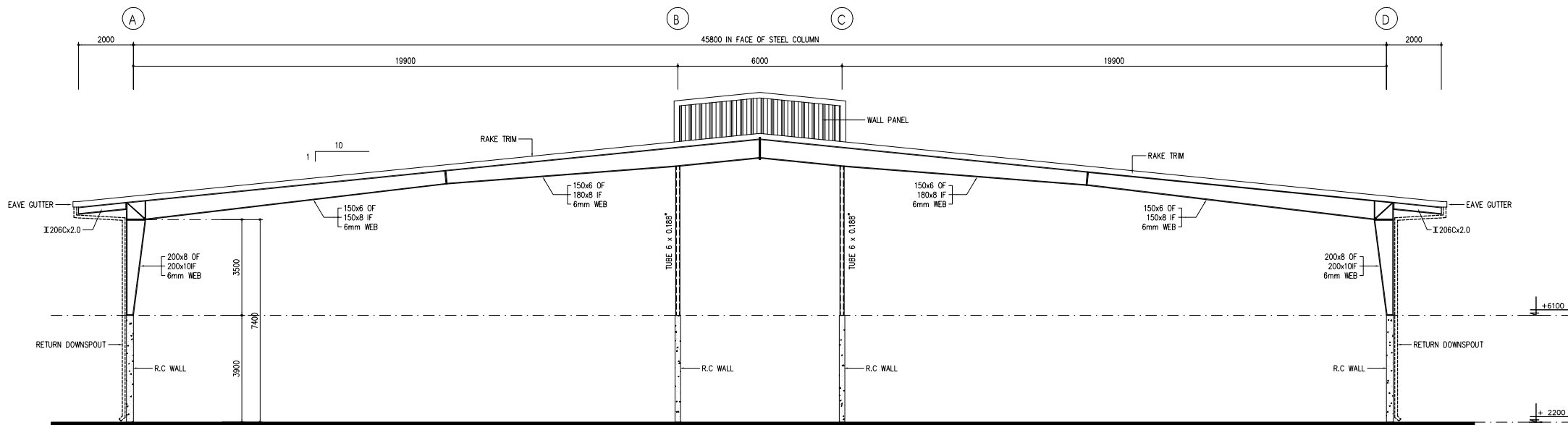
PACIFIC CONSULTANTS INTERNATIONAL

DESIGNED KIKUTA HIROSHI
 CHECKED KONDO MASAMI

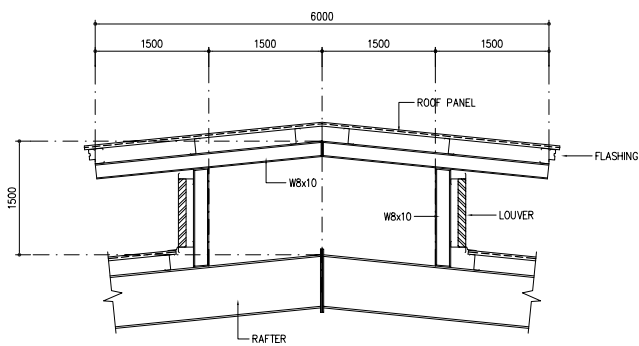
DATE : JUNE 2001 DWG. No. PE-WWTP-305-09



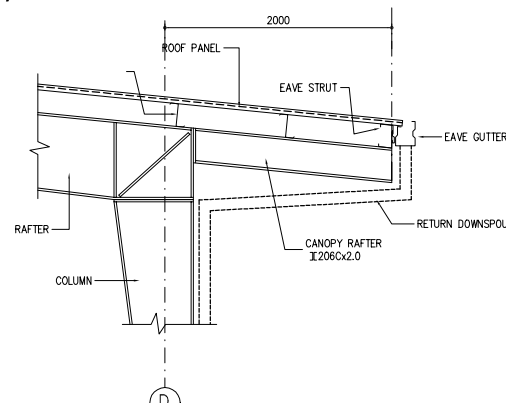
TYP. CROSS SECTION



ENDWALL ELEVATION A-D (AS DRAWN)
ENDWALL ELEVATION D-A (OPP. HAND)



ROOF MONITOR DETAIL



CANOPY DETAIL

TYPICAL BUILT-UP SECTION DESIGNATION SYSTEM

Eg.: Size 200 x 10 x 5 @ 400
 Flanges = 200mm Wide x 10 mm thick.
 Web = 5 mm thick.
 Depth of Web = 400 mm.

Designation	Depth	Width
WBx10	200	100
WBx18	208	133
WBx24	200	165
WBx31	203	203
W12x14	302	100
W12x22	311	100
W14x82	363	257

Designation	Depth	Width
C8x11.5	203	57
C10x15.3	254	66
C12x20.7	305	75
C15x33.9	381	86
C20x75	200	75
C30x100	300	100

DESIGN LOADS :
 DL = 0.1KN/M² + SELF WEIGHT OF STRUCTURE FOR FRAME
 LL = 0.57KN/M²
 WIND SPEED = 31.0M/SEC.

DESIGN CRITERIA :
 - METAL BUILDING MANUFACTURERS ASSOCIATION (MBMA)
 - AMERICAN INSTITUTE OF STEEL CONSTRUCTION (AISC)
 - AMERICAN IRON AND STEEL INSTITUTE (AISI)
 - AMERICAN WELDING SOCIETY (AWS)

- ALL DIMENSIONS ARE IN MILLIMETER
 - DO NOT SCALE DRAWING
 - THIS DRAWING FOR PROPOSAL ONLY
 - NOT FOR CONSTRUCTION

- ALL STEEL COLUMNS SIT ON TOP OF R.C. WALLS AT LEVEL +6100

NO.	DATE	DESCRIPTIONS	BY	APRO.

REVISIONS

PROJECT MANAGEMENT UNIT FOR
 HO CHI MINH CITY
 WATER ENVIRONMENT IMPROVEMENT

THE DETAILED DESIGN STUDY ON HO CHI MINH CITY
 WATER ENVIRONMENT IMPROVEMENT PROJECT
 IN THE SOCIALIST REPUBLIC OF VIET NAM

PACKAGE E
 WASTEWATER TREATMENT PLANT
 FIRST FERMENTATION TANK
 CROSS SECTION, ENDWALL ELEVATION
 CANOPY DETAILS

SCALE : N.T.S

JICA JAPAN INTERNATIONAL COOPERATION AGENCY (JICA)

PACIFIC CONSULTANTS INTERNATIONAL

DESIGNED KIKUTA HIROSHI
 CHECKED KONDO MASAMI

DATE : JUNE 2001 DWG. No. PE-WWTP-305-10

TYPICAL BUILT-UP SECTION DESIGNATION SYSTEM

Eg.: Size 200 x 10 x 5 @ 400
 Flanges = 200mm Wide x 10 mm thick.
 Web = 5 mm thick.
 Depth of Web = 400 mm.

Designation	Depth	Width
WBx10	200	100
WBx18	208	133
WBx24	200	165
WBx31	203	203
W12x14	302	100
W12x22	311	100
W14x82	363	257

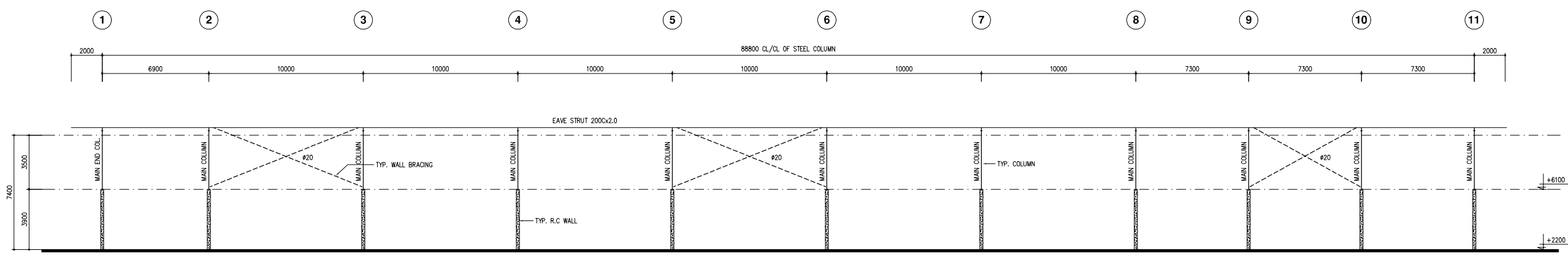
Designation	Depth	Width
C8x11.5	203	57
C10x15.3	254	66
C12x20.7	305	75
C15x33.9	381	86
C20x75	200	75
C30x100	300	100

DESIGN LOADS :
 DL = 0.1KN/M2 + SELF WEIGHT OF STRUCTURE FOR FRAME
 LL = 0.57KN/M2
 WIND SPEED = 31.0M/SEC.

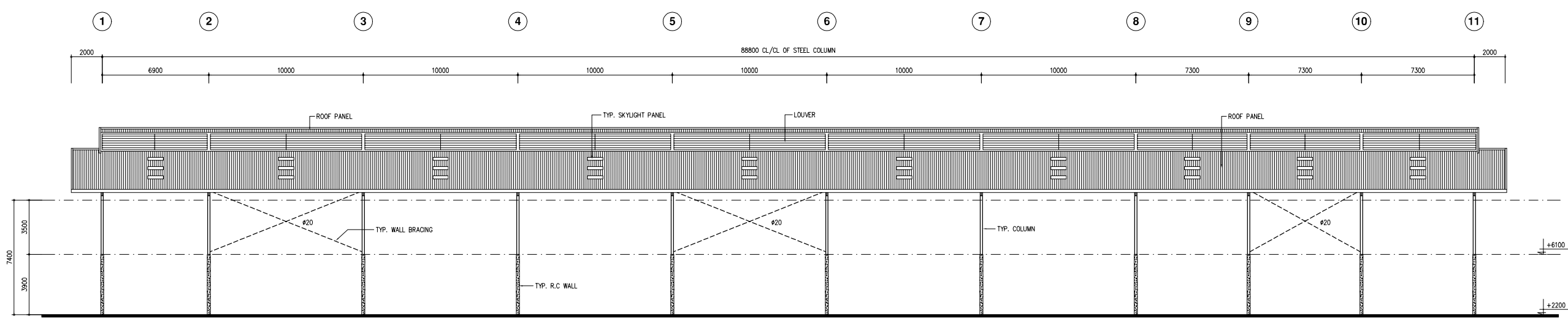
DESIGN CRITERIA :
 - METAL BUILDING MANUFACTURERS ASSOCIATION (MBMA)
 - AMERICAN INSTITUTE OF STEEL CONSTRUCTION (AISC)
 - AMERICAN IRON AND STEEL INSTITUTE (AISI)
 - AMERICAN WELDING SOCIETY (AWS)

- ALL DIMENSIONS ARE IN MILLIMETER
 - DO NOT SCALE DRAWING
 - THIS DRAWING FOR PROPOSAL ONLY
 - NOT FOR CONSTRUCTION

- ALL STEEL COLUMNS SIT ON TOP OF R.C. WALLS AT LEVEL +6100



SIDEWALL FRAMING ELEVATION 1-11 (AS DRAWN)
SIDEWALL FRAMING ELEVATION 11-1 (OPP. HAND)



SIDEWALL ELEVATION 1-11 (AS DRAWN)
SIDEWALL ELEVATION 11-1 (OPP. HAND)

NO.	DATE	DESCRIPTIONS	BY	APRO.

REVISIONS

PROJECT MANAGEMENT UNIT FOR
 HO CHI MINH CITY
 WATER ENVIRONMENT IMPROVEMENT

THE DETAILED DESIGN STUDY ON HO CHI MINH CITY
 WATER ENVIRONMENT IMPROVEMENT PROJECT
 IN THE SOCIALIST REPUBLIC OF VIET NAM

PACKAGE E
 WASTEWATER TREATMENT PLANT
 FIRST FERMENTATION TANK
 SIDEWALL ELEVATION &
 FRAMINGS

SCALE : N.T.S

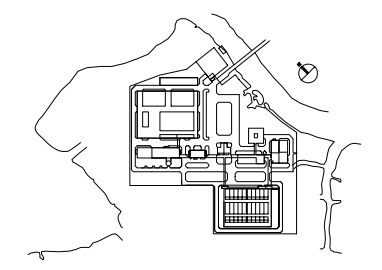
JICA JAPAN INTERNATIONAL COOPERATION AGENCY (JICA)

PACIFIC CONSULTANTS INTERNATIONAL

DESIGNED: KIKUTA HIROSHI
 CHECKED: KONDO MASAMI

DATE : JUNE 2001
 DWG. No. PE-WWTP-305-11

- LEGEND
- ⊗ 400W HIGH PRESSURE SODIUM INDUSTRIAL HIGH BAY LUMINAIRE
 - 2x36W RECESSED FLOURESCENT.
 - ▬ 2x36W FLOURESCENT BATTEN (CEILING OR WALL MOUNTED)
 - 1x40W DOWNLIGHT (H WC)
 - 100W OUTDOOR LUMINAIRE, IP 56
 - 1x40W DOWNLIGHT (H WC)
 - ▬ 1x18W FLOURESCENT BATTEN, IP65
 - ▬ 2x36W FLOURESCENT BATTEN, IP65
 - 2x10W NON-MAINTAINED EXIT LIGHT
 - 16A DUPLEX SOCKET OUTLET
 - 16A DUPLEX SOCKET OUTLET FOR A/C UNIT
 - ⚡ 1 WAY SINGLE SWITCH
 - DISTRIBUTION BOARD
 - DL : DOOR LOUVER
 - EAF : EXHAUST AIR FAN



NO.	DATE	DESCRIPTIONS	BY	APRO.
-----	------	--------------	----	-------

REVISIONS				
PROJECT MANAGEMENT UNIT FOR HO CHI MINH CITY WATER ENVIRONMENT IMPROVEMENT				

THE DETAILED DESIGN STUDY ON HO CHI MINH CITY
WATER ENVIRONMENT IMPROVEMENT PROJECT
IN THE SOCIALIST REPUBLIC OF VIET NAM

PACKAGE E
WASTEWATER TREATMENT PLANT
FIRST FERMENTATION TANK
LIGHTING PLAN

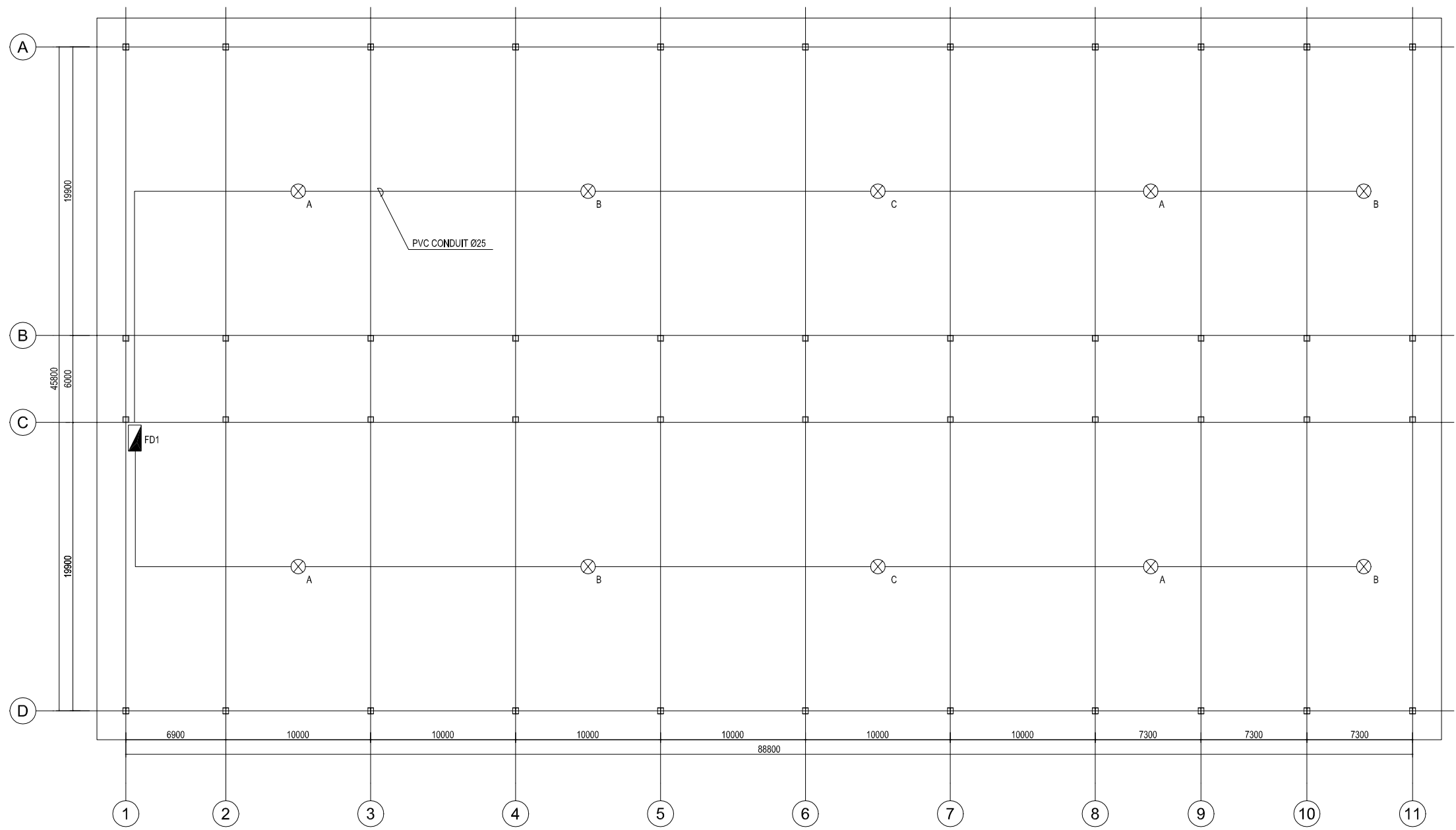
SCALE : 1/100

JICA JAPAN INTERNATIONAL COOPERATION
AGENCY (JICA)

PACIFIC CONSULTANTS INTERNATIONAL

DESIGNED KIKUTA HIROSHI	CHECKED KONDO MASAMI
----------------------------	-------------------------

DATE : JUNE 2001 DWG. No. PE-WWTP-305-12



FIRST FERMENTATION - ELECTRICAL PLAN
SCALE:1/100

