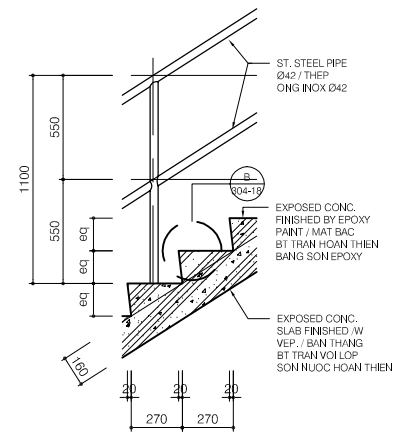
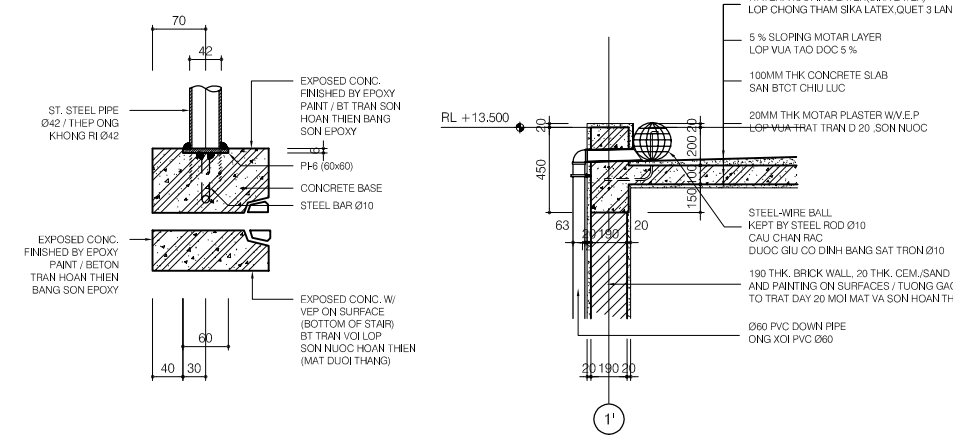


**FLOOR PLAN (S04)**  
SCALE: 1/50

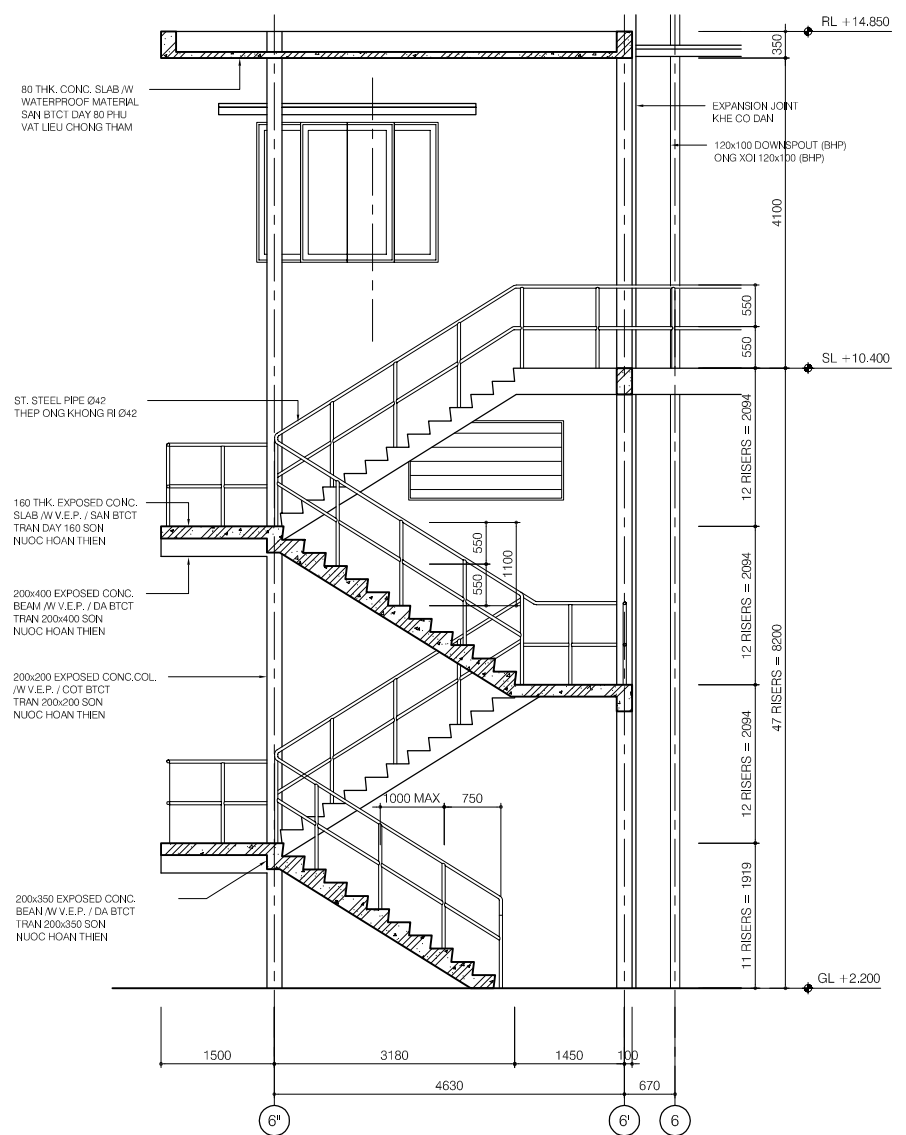


**DETAIL A**  
SCALE: 1/20

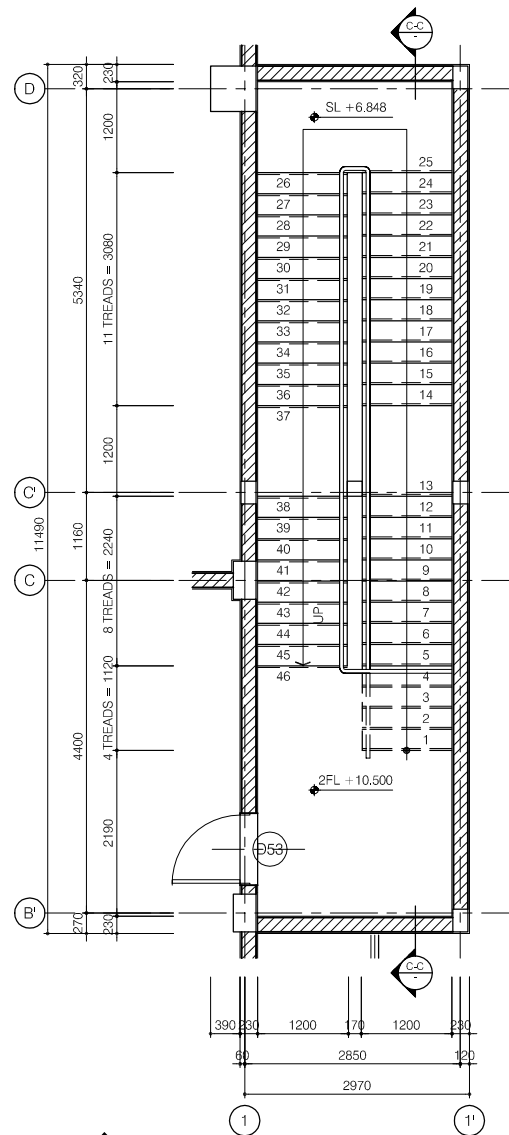


**DETAIL B**  
SCALE: 1/5

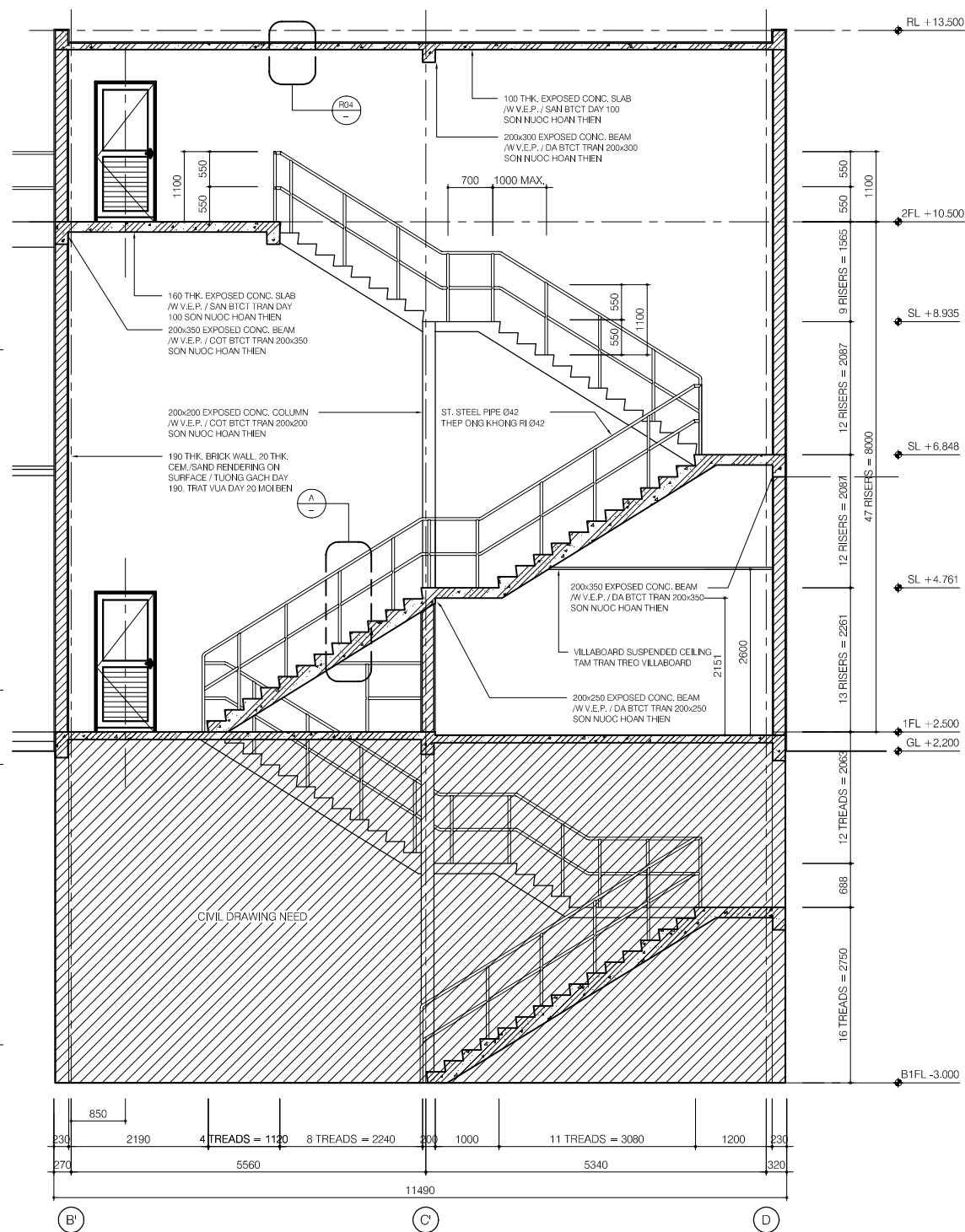
**SECTION DETAIL - R04**  
SCALE: 1/20



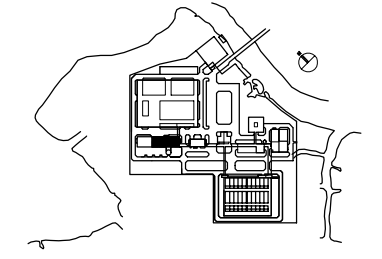
**SECTION D-D**  
SCALE: 1/50



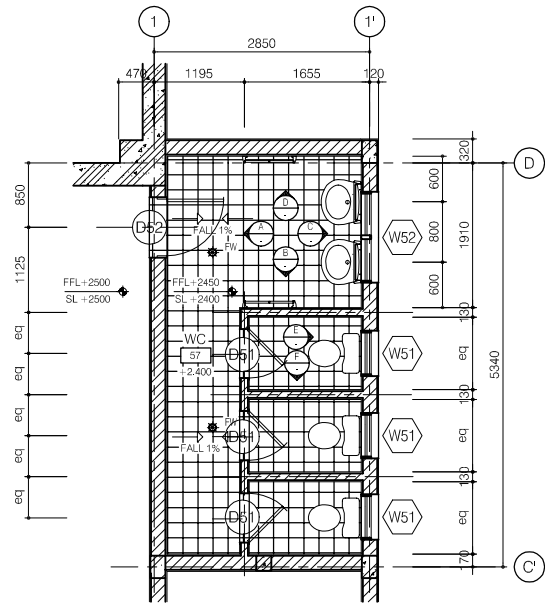
**FLOOR PLAN (S01)**  
SCALE: 1/50



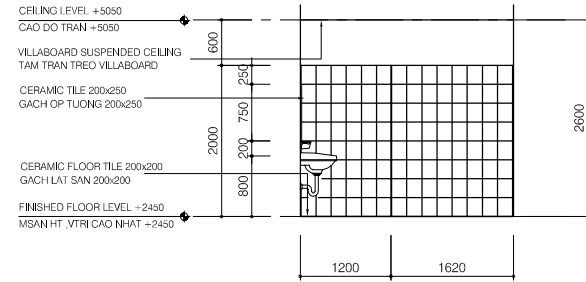
**SECTION C-C**  
SCALE: 1/50



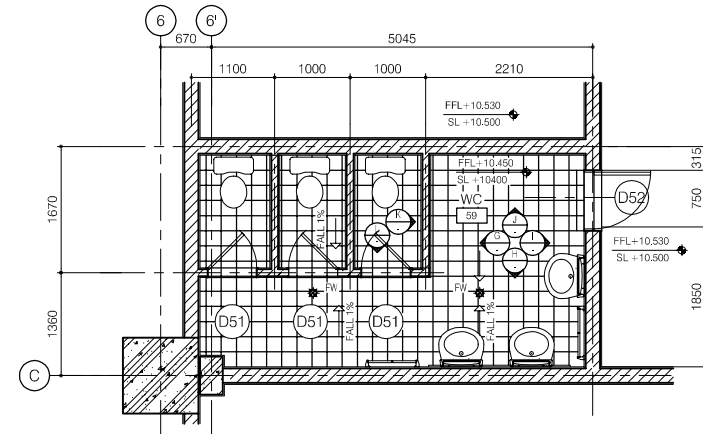
NO.	DATE	DESCRIPTIONS	BY	APRO.
REVISIONS				
PROJECT MANAGEMENT UNIT FOR HO CHI MINH CITY WATER ENVIRONMENT IMPROVEMENT				
THE DETAILED DESIGN STUDY ON HO CHI MINH CITY WATER ENVIRONMENT IMPROVEMENT PROJECT IN THE SOCIALIST REPUBLIC OF VIET NAM				
PACKAGE E WASTEWATER TREATMENT PLANT DEWATERING & CENTRIFUGAL THICKENER BUILDING STAIR DETAILS (2/2)				
SCALE : AS SHOWN				
JAPAN INTERNATIONAL COOPERATION AGENCY (JICA)				
PACIFIC CONSULTANTS INTERNATIONAL				
DESIGNED KIKUTA HIROSHI		CHECKED KONDO MASAMI		
DATE : JUNE 2001		DWG. No. PE-WWTP-304-18		



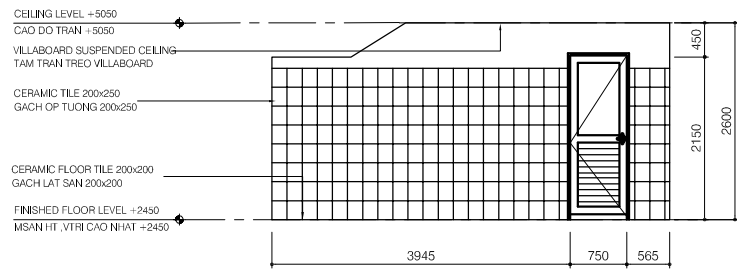
FLOOR PLAN - WC01



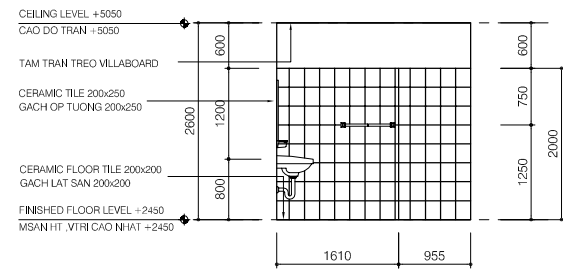
ELEVATION G



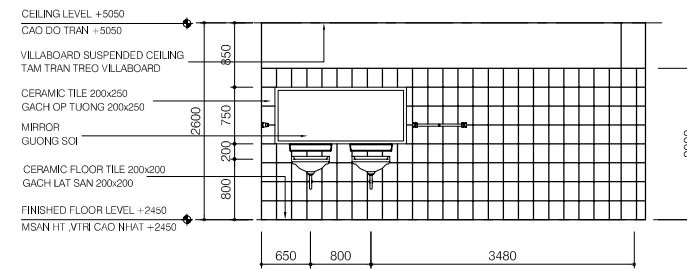
FLOOR PLAN - WC02



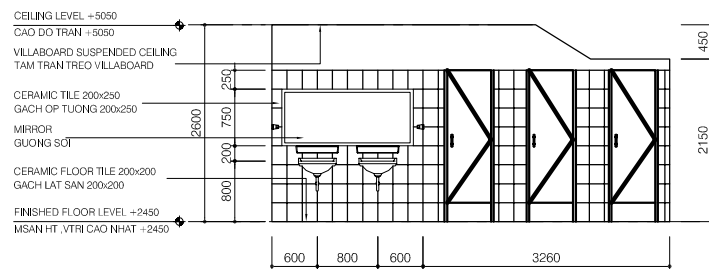
ELEVATION A



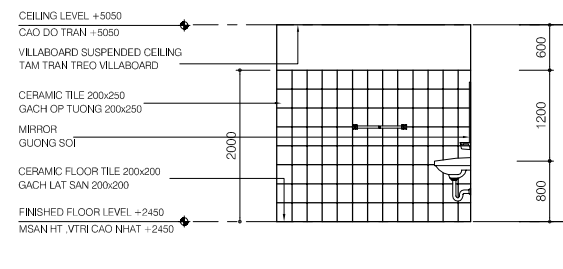
ELEVATION B



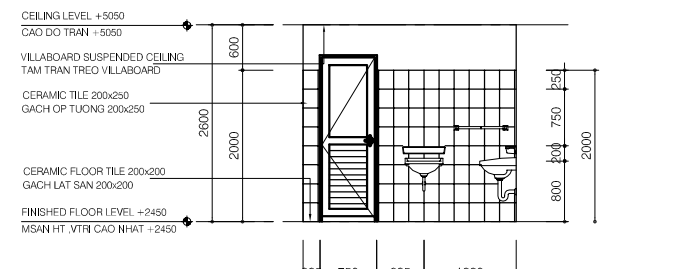
ELEVATION H



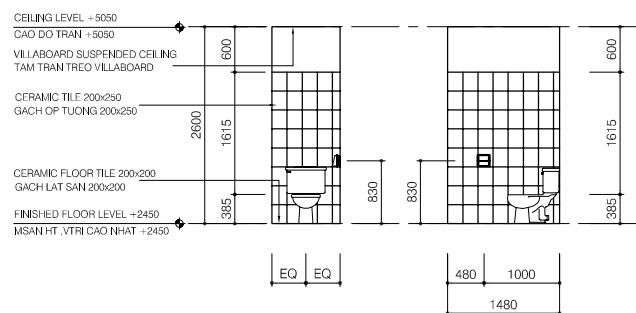
ELEVATION C



ELEVATION D

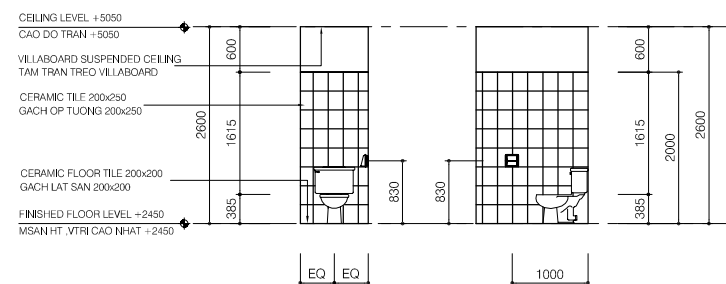


ELEVATION I



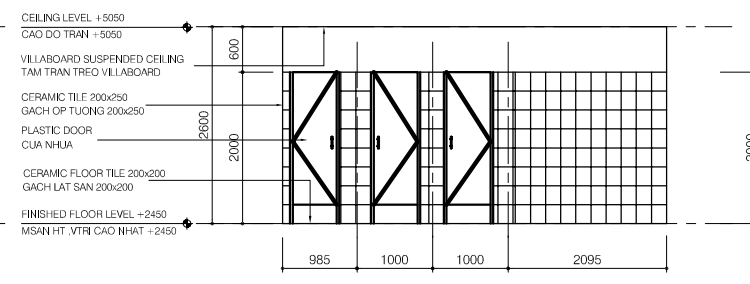
ELEVATION E

ELEVATION F

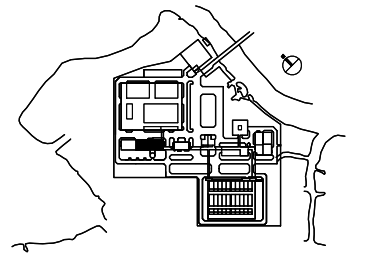


ELEVATION L

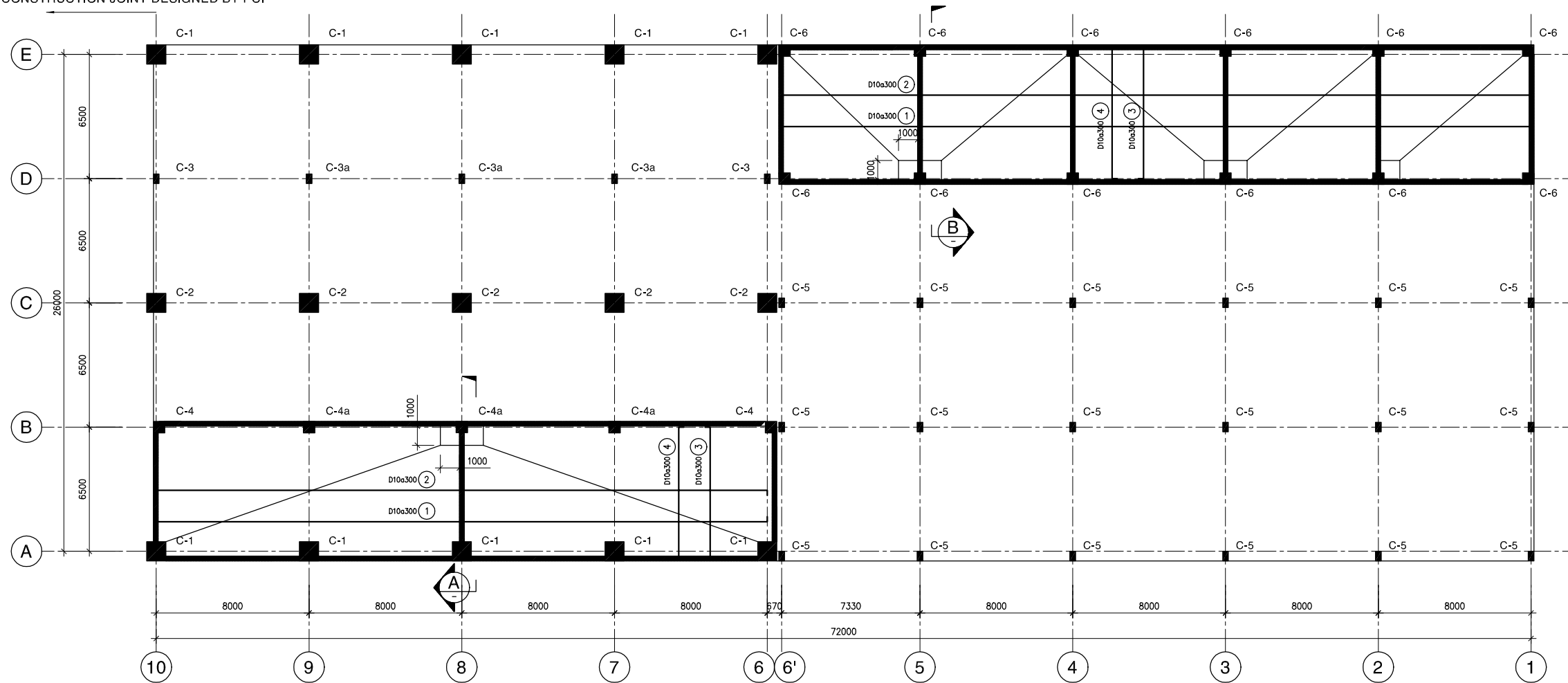
ELEVATION K



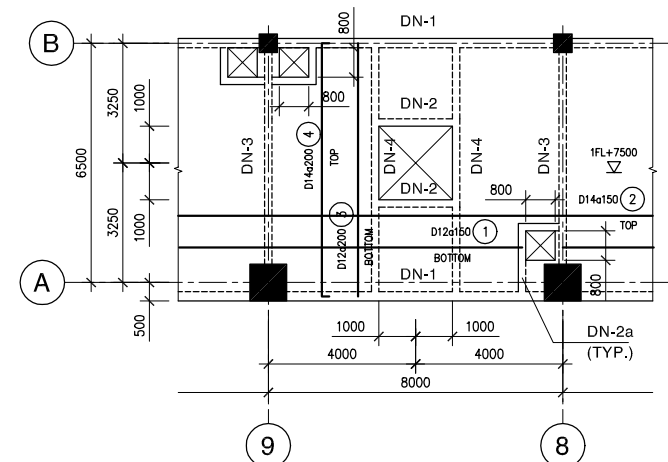
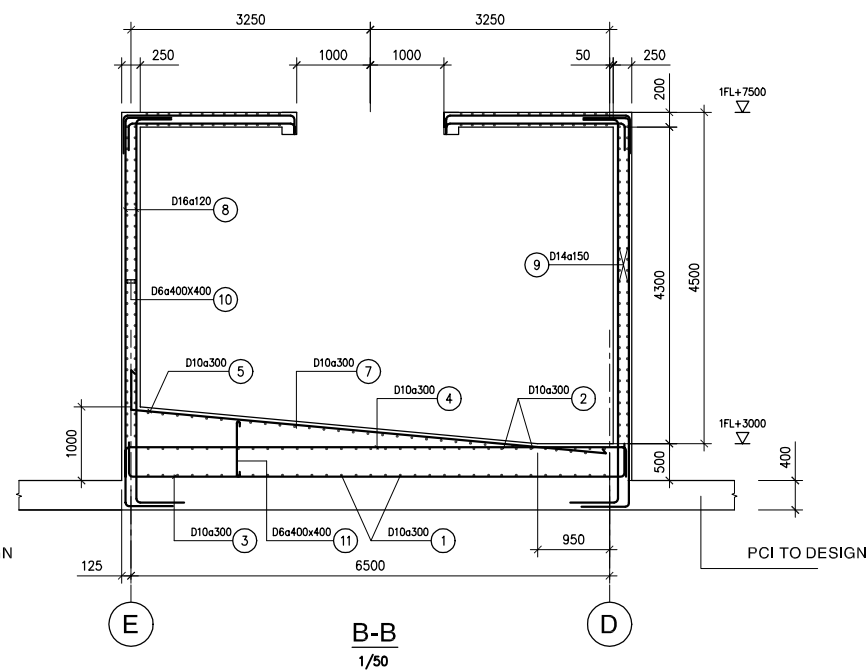
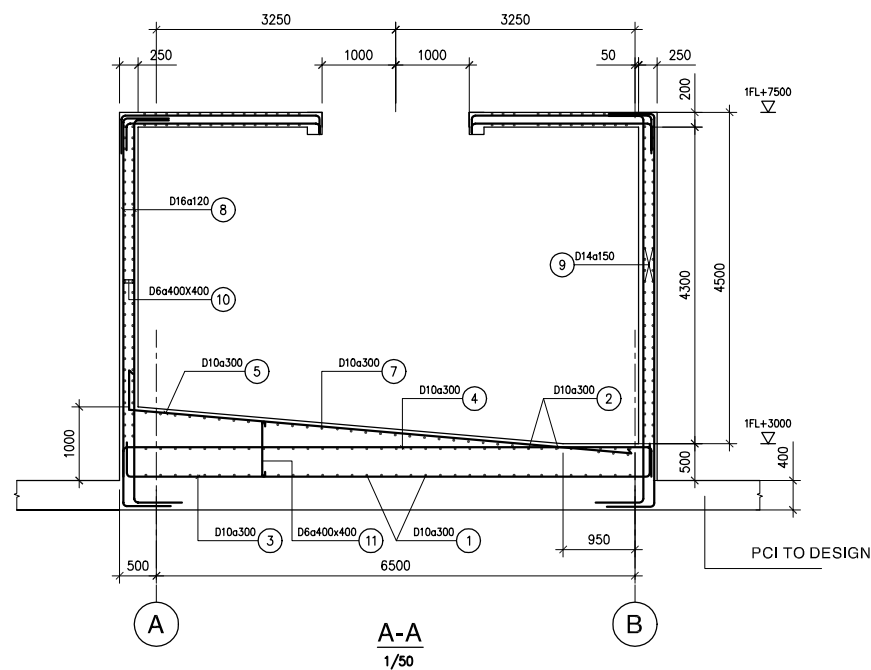
ELEVATION J



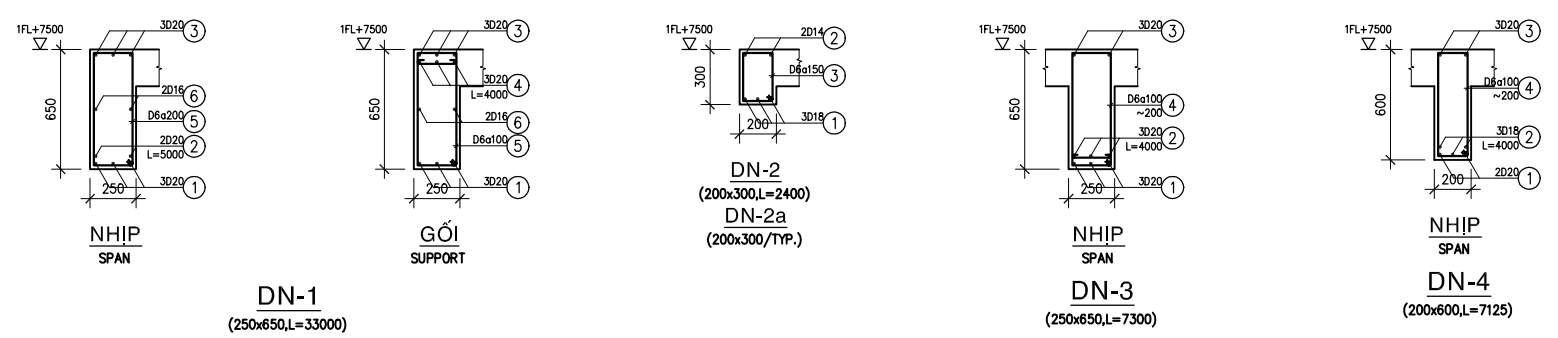
NO.	DATE	DESCRIPTIONS	BY	APPRO.
REVISIONS				
PROJECT MANAGEMENT UNIT FOR HO CHI MINH CITY WATER ENVIRONMENT IMPROVEMENT				
THE DETAILED DESIGN STUDY ON HO CHI MINH CITY WATER ENVIRONMENT IMPROVEMENT PROJECT IN THE SOCIALIST REPUBLIC OF VIET NAM				
PACKAGE E WASTEWATER TREATMENT PLANT DEWATERING AND CENTRIFUGAL THICKENER BUILDING TOILET DETAILS				
SCALE : 1/50				
JAPAN INTERNATIONAL COOPERATION AGENCY (JICA)				
PACIFIC CONSULTANTS INTERNATIONAL				
DESIGNED KIKUTA HIROSHI		CHECKED KONDO MASAMI		
DATE : JUNE 2001		DWG. No. PE-WWTP-304-19		



MẶT BẰNG CỘT, BỂ NƯỚC TẦNG 1  
FIRST FLOOR COLUMN, WATER TANK PLAN



MẶT BẰNG TRÍCH ĐOẠN NẮP BỂ MIXED SLUDGE  
PARTIAL PLAN OF MIXED SLUDGE TANK TOP COVER  
NẮP BỂ WATER TƯƠNG TỰ / WATER TANK TOP COVER SIMILAR  
1/100



**GHI CHÚ :**  
 BÊ TÔNG MẠC 300, RIÀO 10x20  
 COÁT THÉP : D<10 AI Ra=2300 kg/cm<sup>2</sup>  
 10<=D<16 AI Ra=2800 kg/cm<sup>2</sup>  
 D>=16 AIII Ra=3600 kg/cm<sup>2</sup>  
 KEÁT CÁU THÉP CT3, Ra = 2100 kg/cm<sup>2</sup>  
 BULOĂNG LOẠI 5.6, Rc = 1900 kg/cm<sup>2</sup>, Rk = 2100 kg/cm<sup>2</sup>, Rk = 2100 kg/cm<sup>2</sup>  
 CƯỜNG ĐỘ THIẾT KẾ CƯỜNG ĐỘ HAØN GIỎC Rh = 1500 kg/cm<sup>2</sup> / DESIGN STRENGTH Rh = 1500 kg/cm<sup>2</sup>

**NOTES :**  
 CONCRETE GRADE 300, STONE 10x20  
 REINFORCEMENT : D<10 AI Ra=2300 kg/cm<sup>2</sup>  
 10<=D<16 AI Ra=2800 kg/cm<sup>2</sup>  
 D>=16 AIII Ra=3600 kg/cm<sup>2</sup>  
 STRUCTURAL STEEL CT3, Ra = 2100 kg/cm<sup>2</sup>  
 BOLT TYPE 5.6, Rc = 1900 kg/cm<sup>2</sup>, Rk = 2100 kg/cm<sup>2</sup>, Rk = 2100 kg/cm<sup>2</sup>

NO.	DATE	DESCRIPTIONS	BY	APRO.

REVISIONS

PROJECT MANAGEMENT UNIT FOR  
HO CHI MINH CITY  
WATER ENVIRONMENT IMPROVEMENT

THE DETAILED DESIGN STUDY ON HO CHI MINH CITY  
WATER ENVIRONMENT IMPROVEMENT PROJECT  
IN THE SOCIALIST REPUBLIC OF VIET NAM

PACKAGE E  
WASTEWATER TREATMENT PLANT  
DEWATER BUILDING  
1ST FLOOR COLUMN & TANK PLAN  
TANK DETAILS

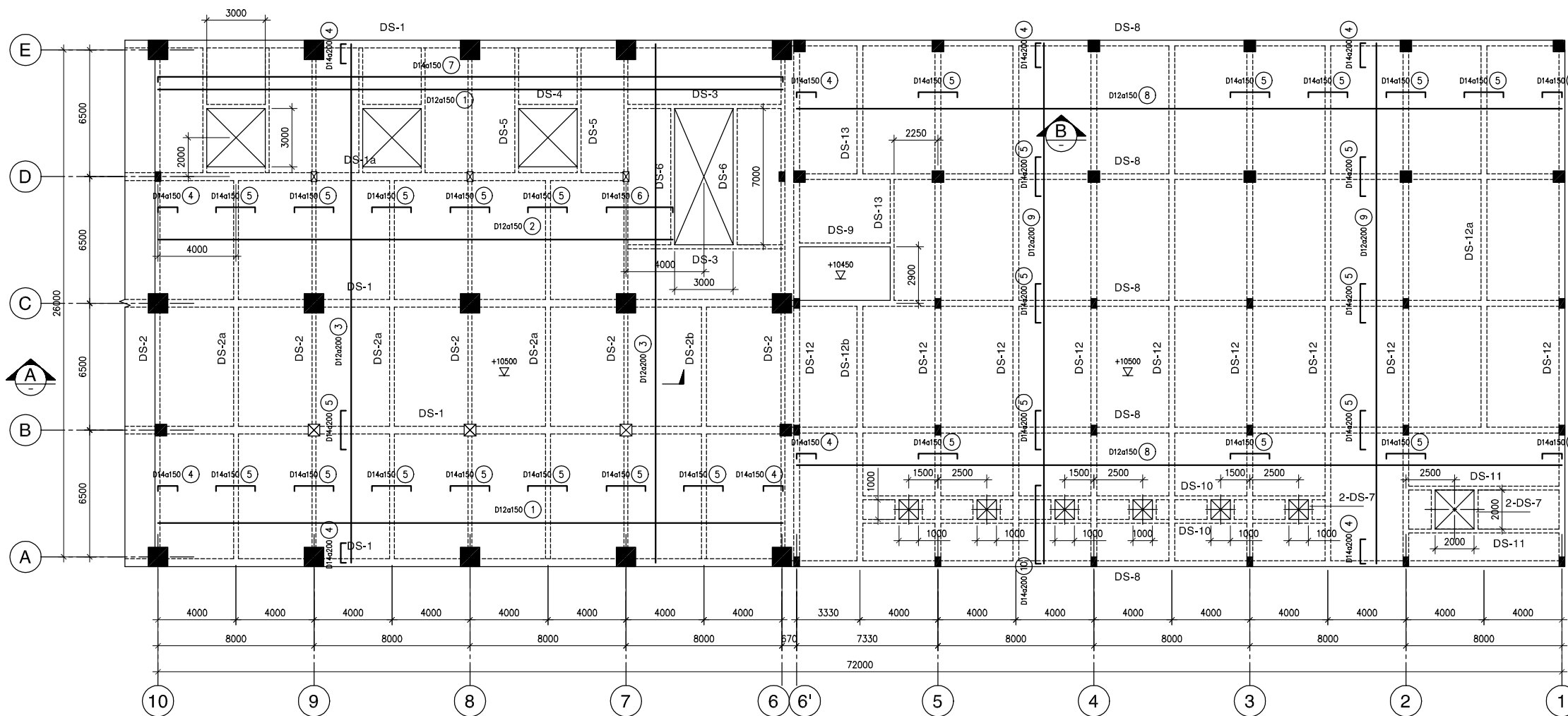
SCALE : N.T.S

JICA JAPAN INTERNATIONAL COOPERATION  
AGENCY ( JICA )

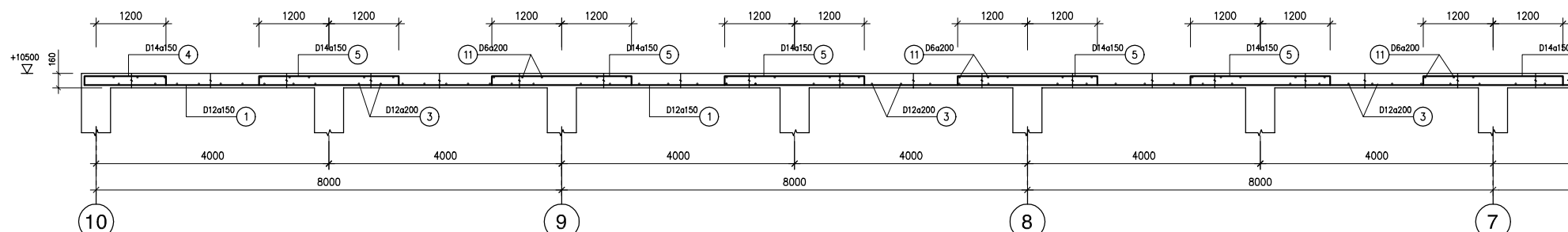
PACIFIC CONSULTANTS INTERNATIONAL

DESIGNED KIKUTA HIROSHI	CHECKED KONDO MASAMI
----------------------------	-------------------------

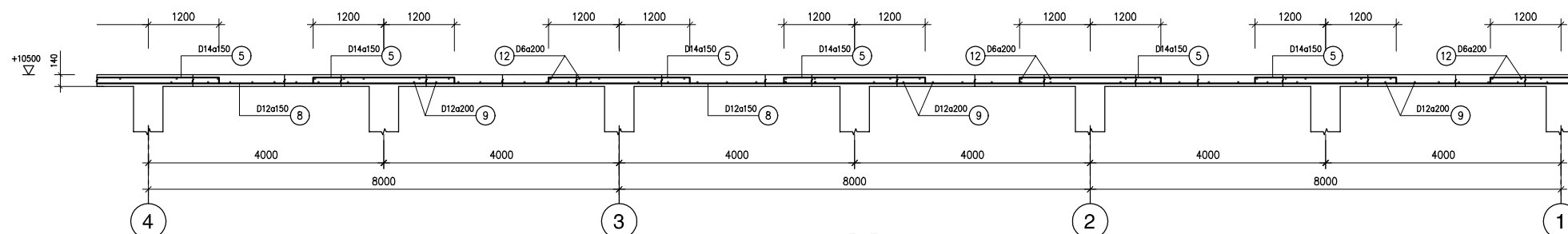
PHASE 2  
SEE CONSTRUCTION JOINT DETAIL AT PE-WWTP-304-23



MẶT BẰNG DÀM SÀN TẦNG 2  
SECOND FLOOR FRAMING PLAN



A-A  
1/20



B-B  
1/20

GHI CHÚ :

BEA TỜNG MÀDC 300, NÀO 10x20  
 COÁT THEDP :  $D < 10$  AI Ra=2300 kG/cm<sup>2</sup>  
 $10 \leq D < 16$  All Ra=2800 kG/cm<sup>2</sup>  
 $D \geq 16$  All Ra=3600 kG/cm<sup>2</sup>  
 KEAT CÀU THEDP CT3, Ra = 2100 kG/cm<sup>2</sup>  
 BULOANG LOAI 5.6, Rc = 1900 kG/cm<sup>2</sup>, Rk = 2100 kG/cm<sup>2</sup>  
 CỒONG NỮA THEAT KEA NỒONG HÀON GOUC Rh = 1500 kG/cm<sup>2</sup>  
 THAM KHAOU CHI TIET DAAM OÙ BAON VEÙ WTP-E3-203

NOTES :

CONCRETE GRADE 300, STONE 10x20  
 REINFORCEMENT :  $D < 10$  AI Ra=2300 kG/cm<sup>2</sup>  
 $10 \leq D < 16$  All Ra=2800 kG/cm<sup>2</sup>  
 $D \geq 16$  All Ra=3600 kG/cm<sup>2</sup>  
 STRUCTURAL STEEL CT3, Ra = 2100 kG/cm<sup>2</sup>  
 BOLT TYPE 5.6, Rc = 1900 kG/cm<sup>2</sup>, Rk = 2100 kG/cm<sup>2</sup>  
 WELD DESIGN STRENGTH Rh = 1500 kG/cm<sup>2</sup>  
 REFER TO DWG. WTP-E3-203 FOR DETAIL OF BEAMS

NO.	DATE	DESCRIPTIONS	BY	APRO.
-----	------	--------------	----	-------

REVISIONS

PROJECT MANAGEMENT UNIT FOR  
HO CHI MINH CITY  
WATER ENVIRONMENT IMPROVEMENT

THE DETAILED DESIGN STUDY ON HO CHI MINH CITY  
WATER ENVIRONMENT IMPROVEMENT PROJECT  
IN THE SOCIALIST REPUBLIC OF VIET NAM

PACKAGE E  
WASTEWATER TREATMENT PLANT  
DEWATER BUILDING  
SECOND FLOOR FRAMING PLAN

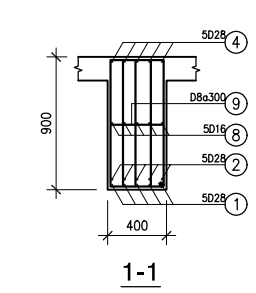
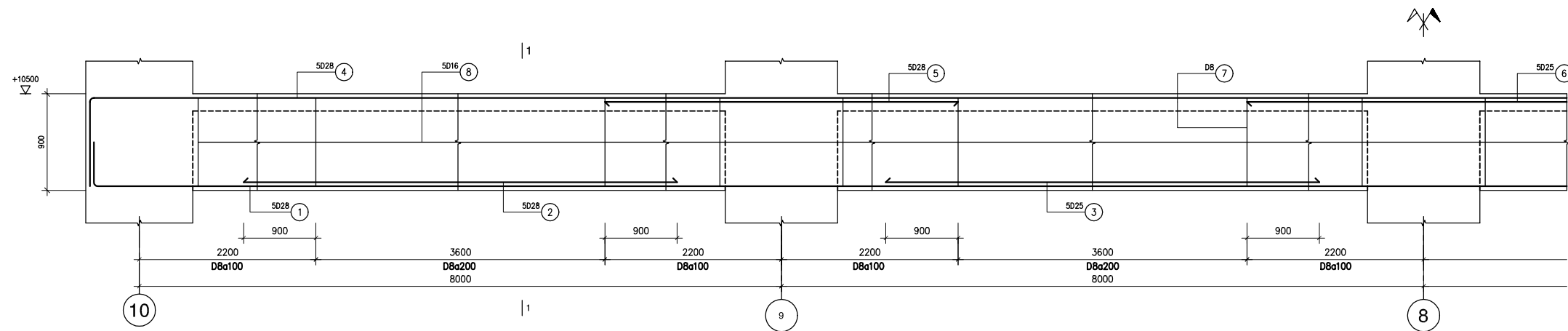
SCALE : N.T.S

JICA JAPAN INTERNATIONAL COOPERATION  
AGENCY ( JICA )

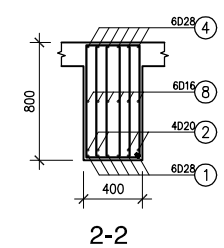
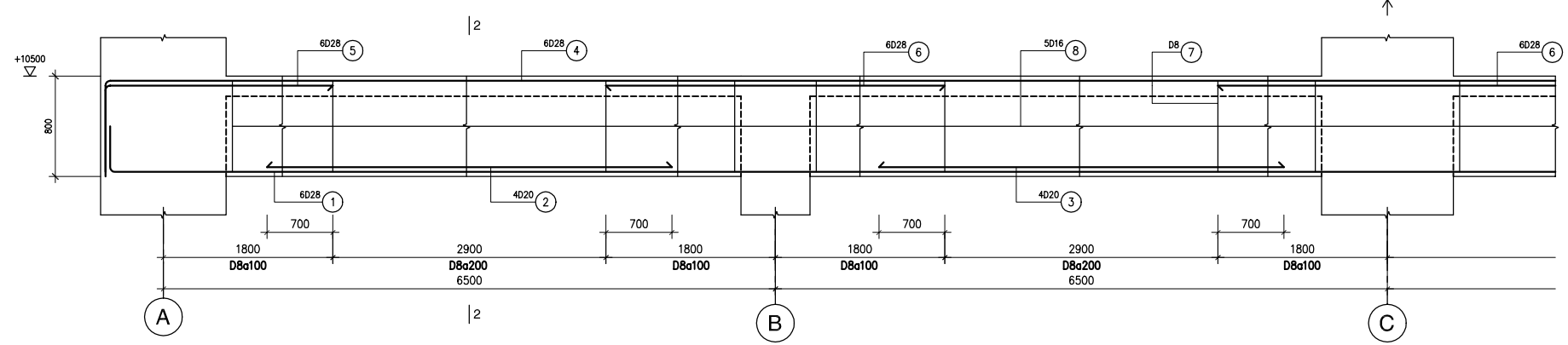
PACIFIC CONSULTANTS INTERNATIONAL

DESIGNED KIKUTA HIROSHI	CHECKED KONDO MASAMI
----------------------------	-------------------------

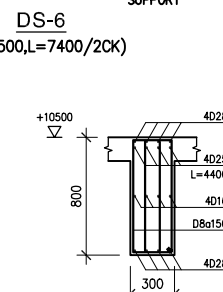
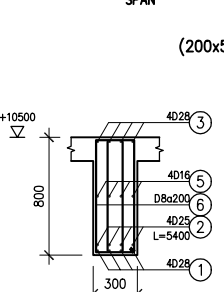
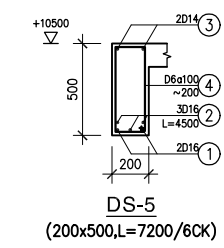
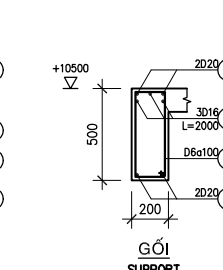
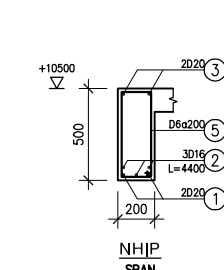
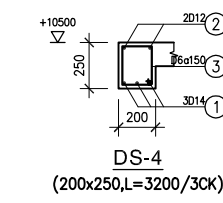
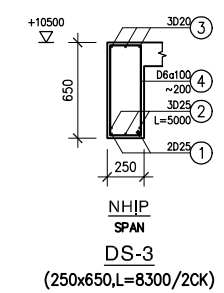
DATE : JUNE 2001 DWG. No. PE-WWTP-304-21



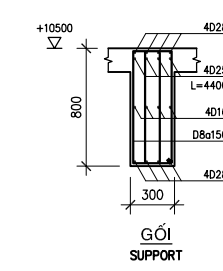
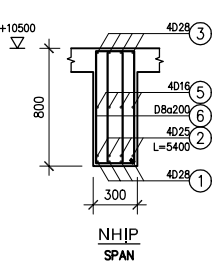
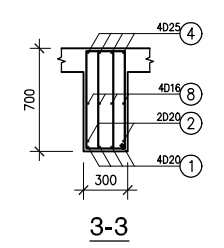
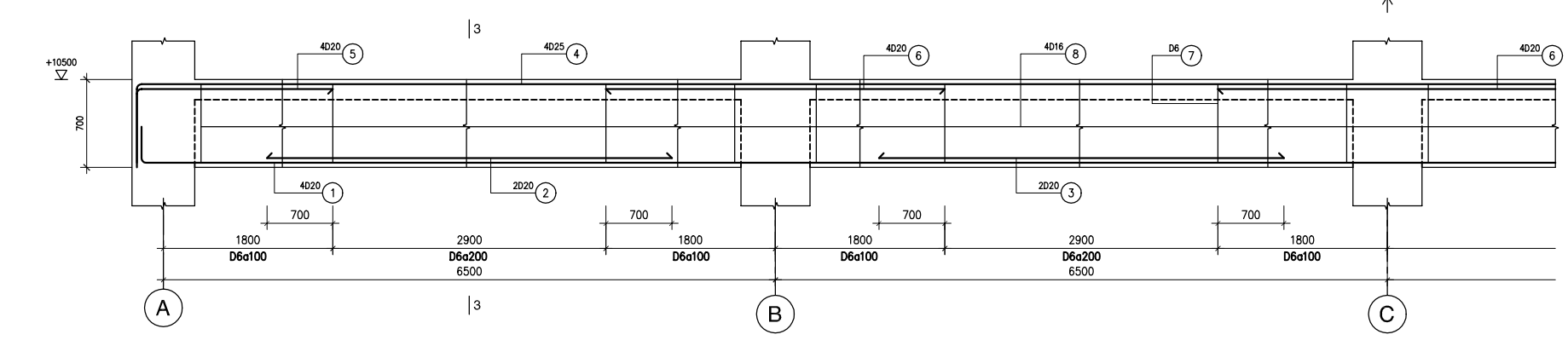
**DS-1**  
(400x900,L=33000/4CK)  
**DS-1a**  
(400x900,L=24400/1CK)



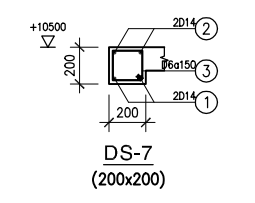
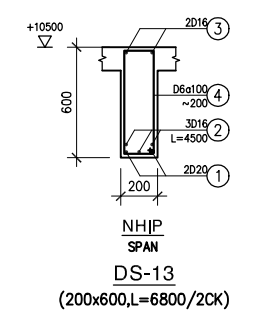
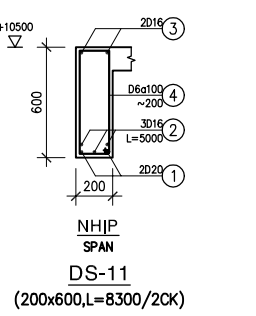
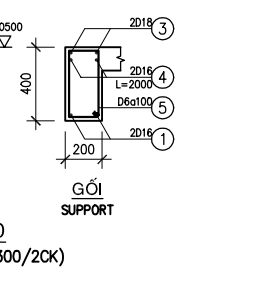
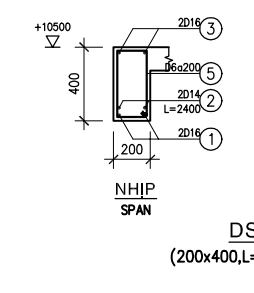
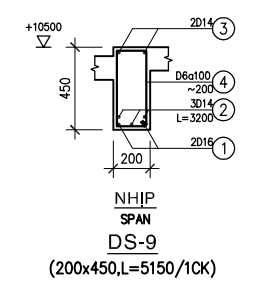
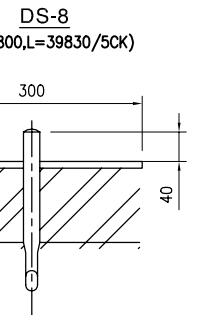
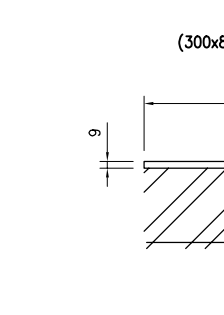
**DS-2**  
(400x800,L=27000/5CK)  
**DS-2a**  
(400x800,L=20250/3CK)  
**DS-2b**  
(400x800,L=13650/1CK)



**DS-2**  
(400x800,L=27000/5CK)  
**DS-2a**  
(400x800,L=20250/3CK)  
**DS-2b**  
(400x800,L=13650/1CK)



**DS-12**  
(300x700,L=27000/9CK)  
**DS-12a**  
(300x700,L=19950/1CK)  
**DS-12b**  
(300x700,L=13300/1CK)



**DS-9**  
(200x450,L=5150/1CK)

**DS-10**  
(200x400,L=24300/2CK)

**DS-11**  
(200x600,L=8300/2CK)

**DS-11**  
(200x600,L=8300/2CK)

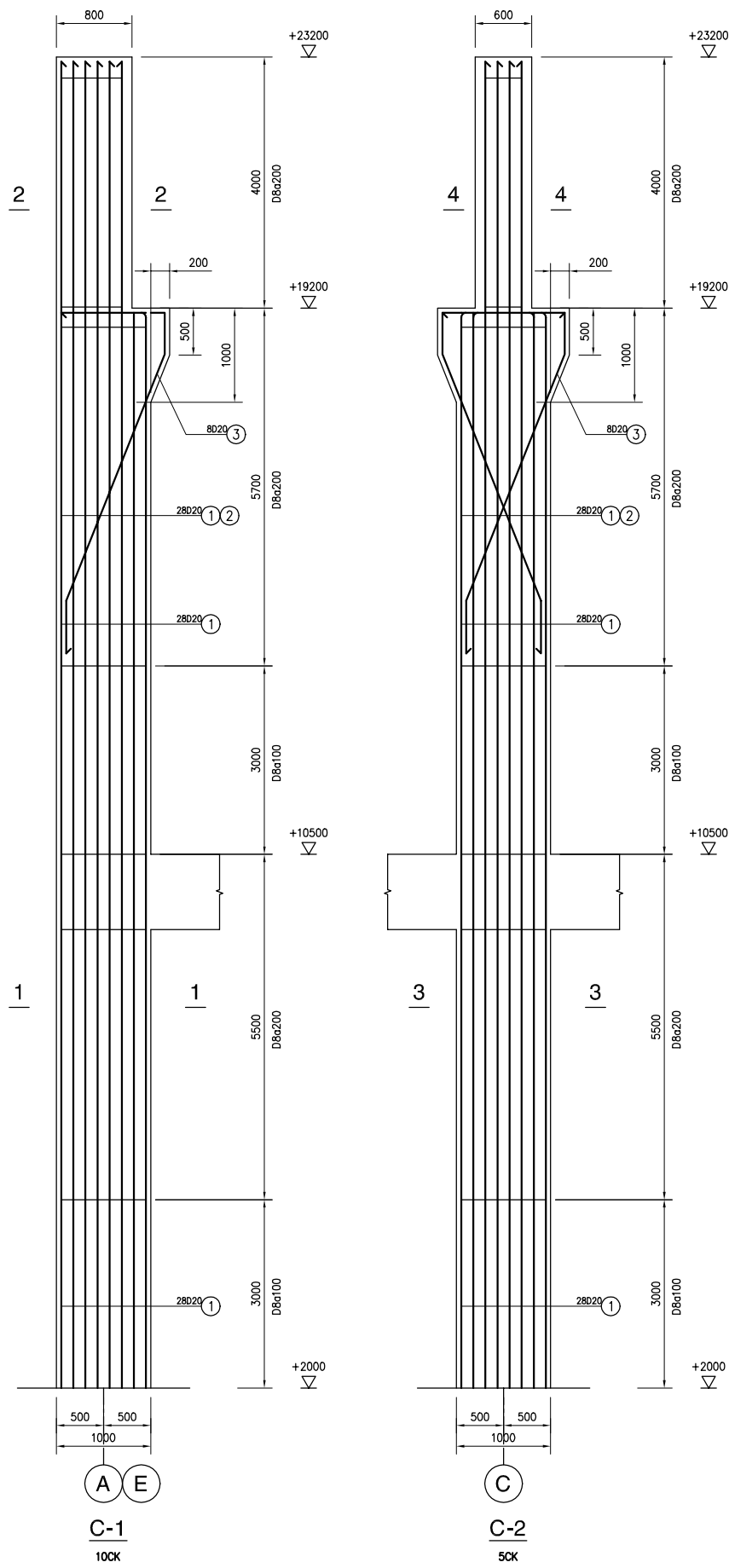
**DS-13**  
(200x600,L=6800/2CK)

**DS-7**  
(200x200)

**GHI CHÚ :**  
 BÊ TÔNG MÀC 300, NÀO 10x20  
 COÁT THÉP : D<10 Al Ra=2300 kg/cm<sup>2</sup>  
 10<=D<16 All Ra=2800 kg/cm<sup>2</sup>  
 D>=16 All Ra=3600 kg/cm<sup>2</sup>  
 KEAT CÀU THÉP CT3, Ra = 2100 kg/cm<sup>2</sup>  
 BULOÀNG LOẠI 5.6, Rc = 1900 kg/cm<sup>2</sup>, Rk = 2100 kg/cm<sup>2</sup>  
 CỒØNG RÕX THIẾT KẾ HÀ ØNG HÀN GỐC Rh = 1500 kg/cm<sup>2</sup>

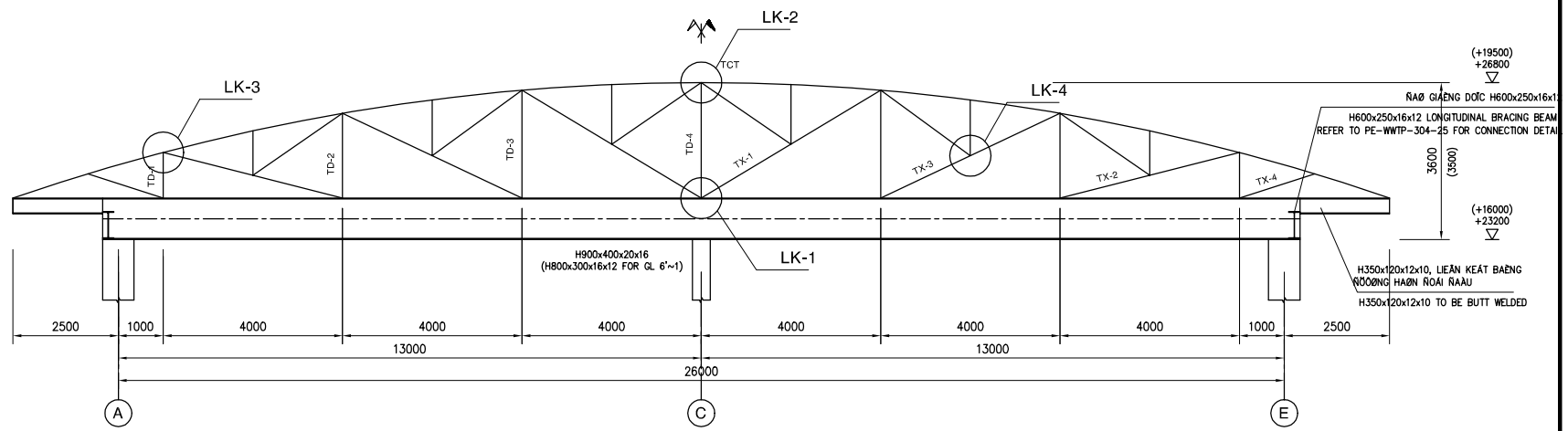
**NOTES :**  
 CONCRETE GRADE 300, STONE 10x20  
 REINFORCEMENT : D<10 Al Ra=2300 kg/cm<sup>2</sup>  
 10<=D<16 All Ra=2800 kg/cm<sup>2</sup>  
 D>=16 All Ra=3600 kg/cm<sup>2</sup>  
 STRUCTURAL STEEL CT3, Ra = 2100 kg/cm<sup>2</sup>  
 BOLT TYPE 5.6, Rc = 1900 kg/cm<sup>2</sup>, Rk = 2100 kg/cm<sup>2</sup>  
 WELDING STRENGTH Rh = 1500 kg/cm<sup>2</sup>

NO.	DATE	DESCRIPTIONS	BY	APRO.
REVISIONS				
PROJECT MANAGEMENT UNIT FOR HO CHI MINH CITY WATER ENVIRONMENT IMPROVEMENT				
THE DETAILED DESIGN STUDY ON HO CHI MINH CITY WATER ENVIRONMENT IMPROVEMENT PROJECT IN THE SOCIALIST REPUBLIC OF VIET NAM				
PACKAGE E WASTEWATER TREATMENT PLANT DEWATER BUILDING LEVEL 2 BEAM DETAIL				
SCALE : N.T.S				
		JAPAN INTERNATIONAL COOPERATION AGENCY ( JICA )		
		PACIFIC CONSULTANTS INTERNATIONAL		
DESIGNED KIKUTA HIROSHI		CHECKED KONDO MASAMI		
DATE : JUNE 2001		DWG. No. PE-WWTP-304-22		

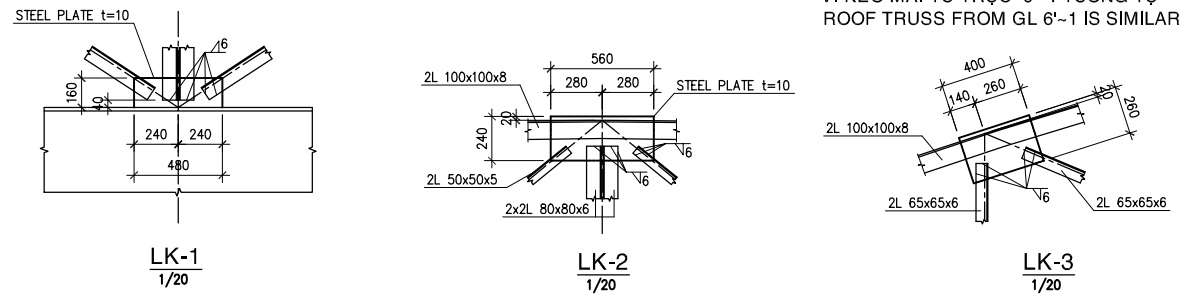


**GHI CHÚ :**  
 BÊ TÔNG MẠC 300, RAU 10x20  
 COÁT THÉP : D<10 AI R<sub>a</sub>=2300 kG/cm<sup>2</sup>  
 10<D<16 All R<sub>a</sub>=2800 kG/cm<sup>2</sup>  
 D>=16 All R<sub>a</sub>=3600 kG/cm<sup>2</sup>  
 KEÁT CẤU THÉP CT3, R<sub>a</sub> = 2100 kG/cm<sup>2</sup>  
 BULOĂNG LOẠI 5.6, R<sub>c</sub> = 1900 kG/cm<sup>2</sup>, R<sub>k</sub> = 2100 kG/cm<sup>2</sup>  
 CƯỜNG NỐX THIẾT KEÁ RỒOĂNG HAZN GỒC R<sub>h</sub> = 1500 kG/cm<sup>2</sup>

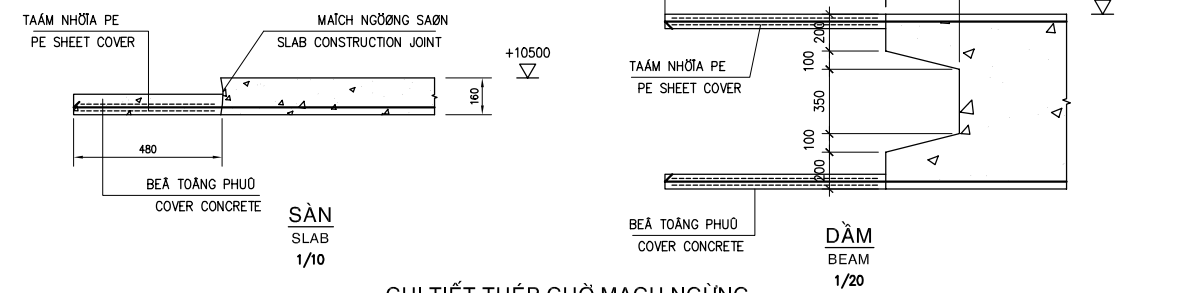
**NOTES :**  
 CONCRETE GRADE 300, STONE 10x20  
 REINFORCEMENT : D<10 AI R<sub>a</sub>=2300 kG/cm<sup>2</sup>  
 10<D<16 All R<sub>a</sub>=2800 kG/cm<sup>2</sup>  
 D>=16 All R<sub>a</sub>=3600 kG/cm<sup>2</sup>  
 STRUCTURAL STEEL CT3, R<sub>a</sub> = 2100 kG/cm<sup>2</sup>  
 BOLT TYPE 5.6, R<sub>c</sub> = 1900 kG/cm<sup>2</sup>, R<sub>k</sub> = 2100 kG/cm<sup>2</sup>  
 DESIGN STRENGTH R<sub>h</sub> = 1500 kG/cm<sup>2</sup>



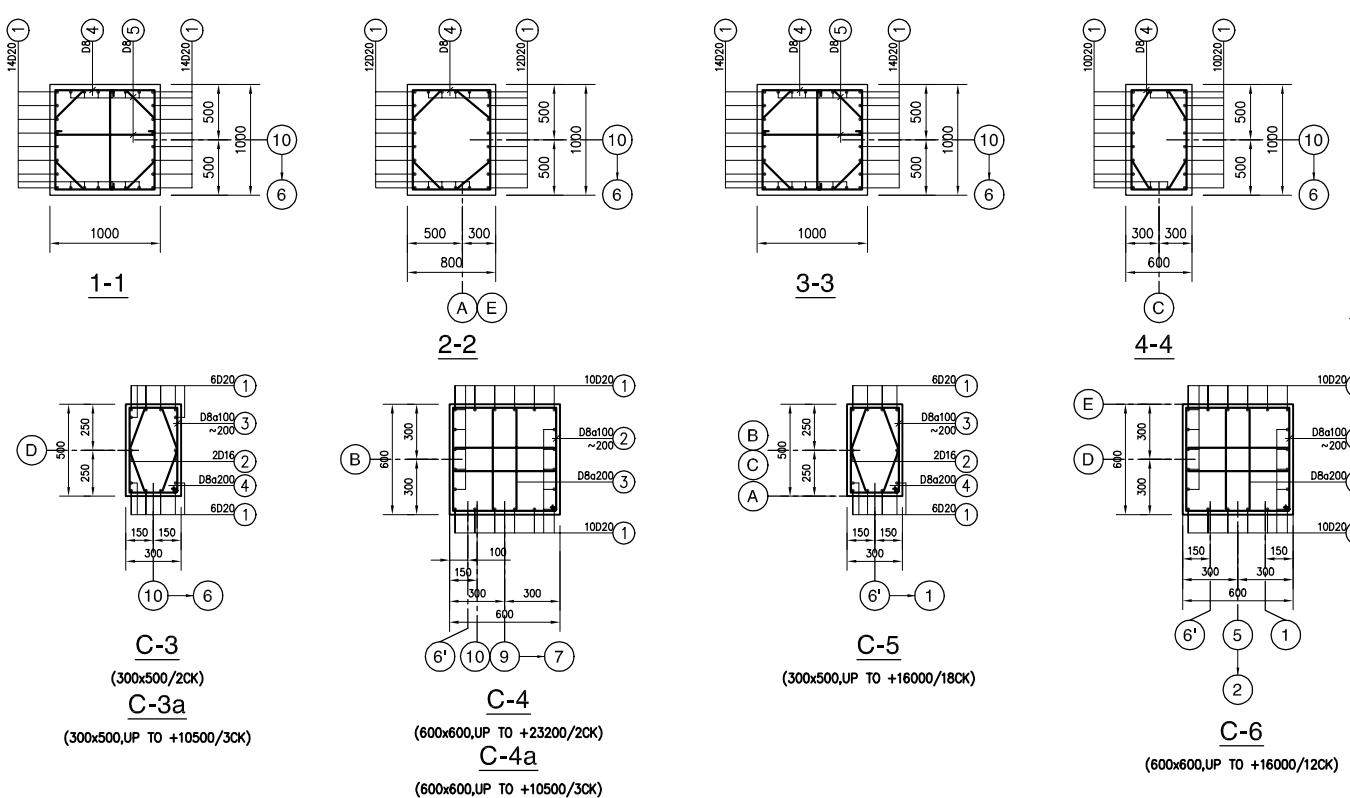
**CHI TIẾT VÌ KÈO MÁI (TRỤC 10-6)**  
 ROOF TRUSS DETAIL (GL 10-6)  
 1/75



VÌ KÈO MÁI TỪ TRỤC 6'-1 TƯƠNG TỰ  
 ROOF TRUSS FROM GL 6'-1 IS SIMILAR

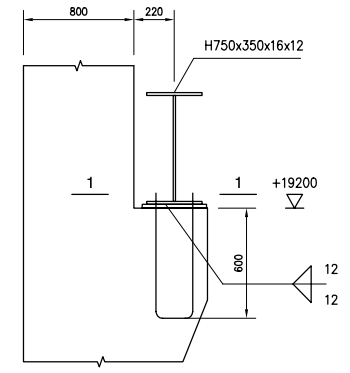


**CHI TIẾT THÉP CHỜ MẠCH NGỪNG**  
 STARTER BAR DETAIL AT CONSTRUCTION JOINT



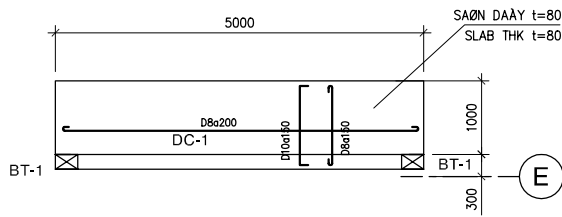
**THỐNG KÊ TIẾT DIỆN**  
 SECTION SCHEDULE

MARKING	SECTION
TCT	2L100x100x8
TX-1	2L100x100x8
TX-2	2L100x100x8
TX-3	2L80x80x6
TX-4	2L80x80x6
TD-1	2L63x63x6
TD-2	2L63x63x6
TD-3	2L63x63x6
TD-4	2L80x80x6
REMAINING	2L50x5

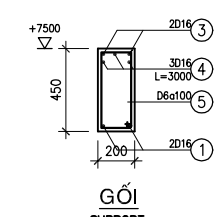
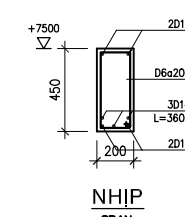
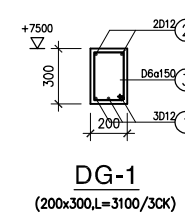
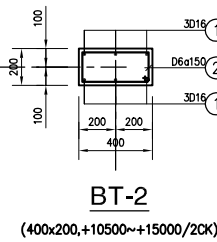
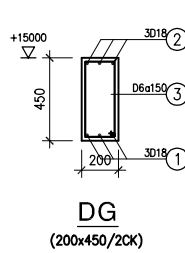
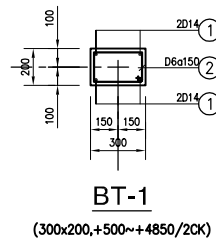


**CHI TIẾT DẦM CẦU CHẠY**  
 CRANE BEAM DETAIL  
 1/20

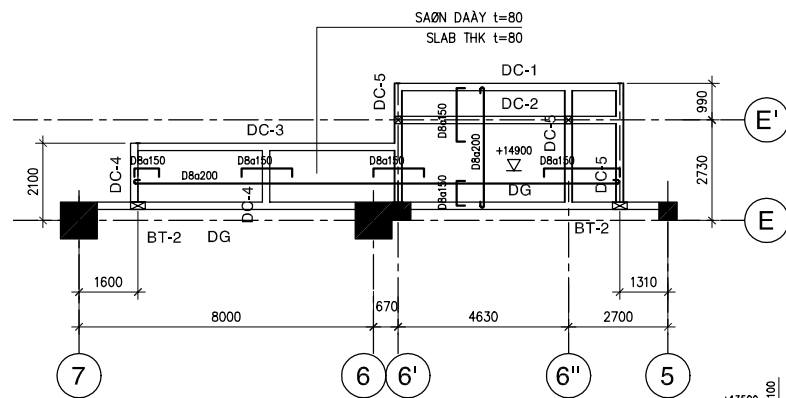
NO.	DATE	DESCRIPTIONS	BY	APRO.
REVISIONS				
PROJECT MANAGEMENT UNIT FOR HO CHI MINH CITY WATER ENVIRONMENT IMPROVEMENT				
THE DETAILED DESIGN STUDY ON HO CHI MINH CITY WATER ENVIRONMENT IMPROVEMENT PROJECT IN THE SOCIALIST REPUBLIC OF VIET NAM				
PACKAGE E WASTEWATER TREATMENT PLANT DEWATER BUILDING DETAIL OF COLUMN & ROOF				
SCALE : N.T.S				
JAPAN INTERNATIONAL COOPERATION AGENCY ( JICA )		PACIFIC CONSULTANTS INTERNATIONAL		
DESIGNED KIKUTA HIROSHI	CHECKED KONDO MASAMI			
DATE : JUNE 2001		DWG. No. PE-WWTP-304-23		



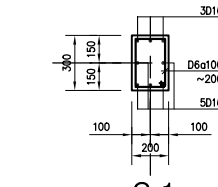
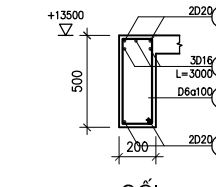
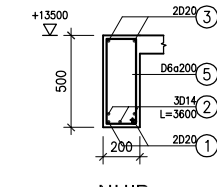
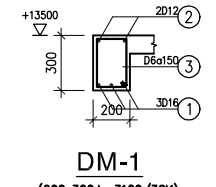
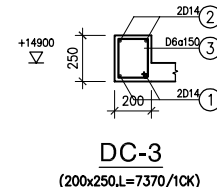
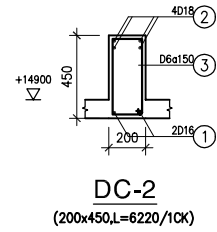
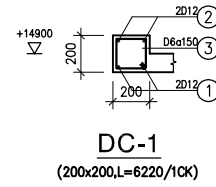
**CHI TIẾT Ô VĂNG ĐIỂN HÌNH**  
TYPICAL EAVE DETAIL  
1/50



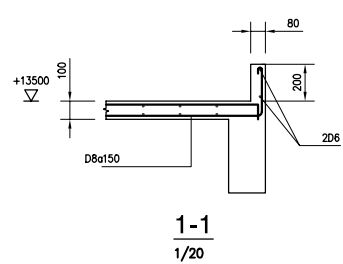
**DG-2**  
(200x450, L=11640/2CK)



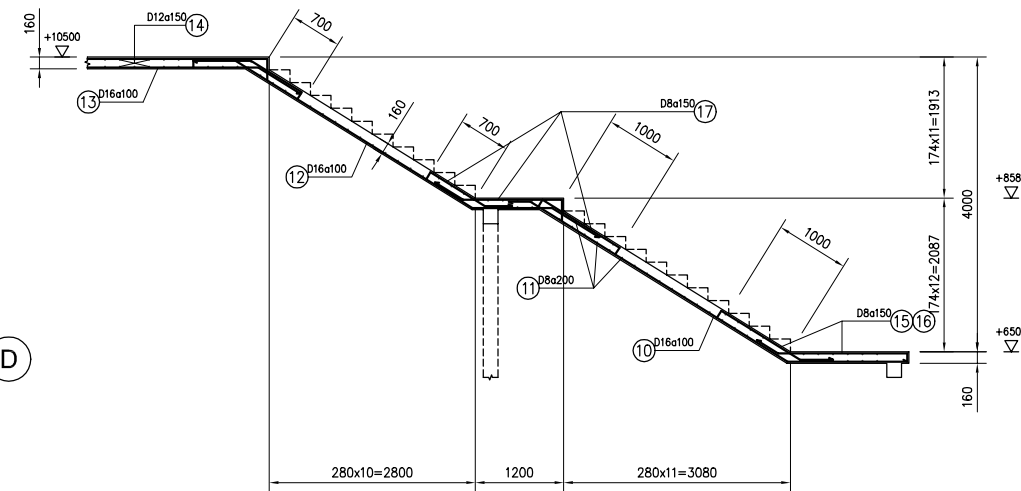
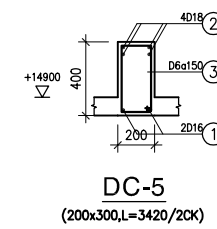
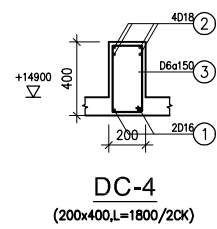
**MẶT BẰNG MÁI CẦU THANG TRỰC E, 7-5**  
ROOF PLAN OF STAIR AT GL E, 7-5  
1/100



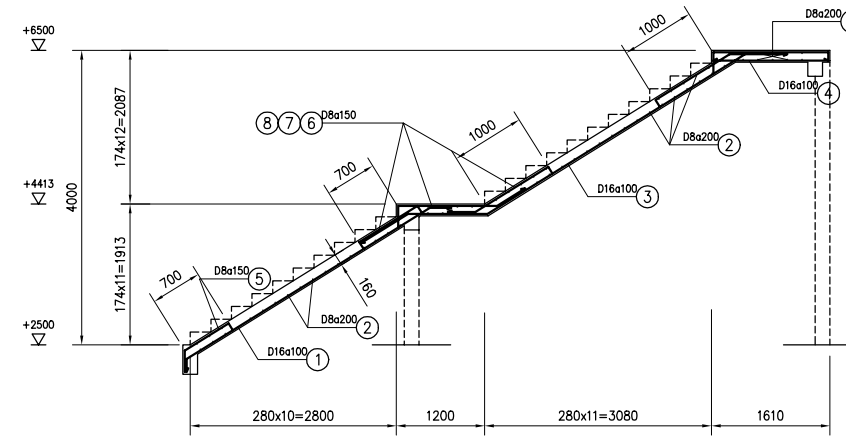
**C-1a**  
(200x300, +2500~+13500/1CK)



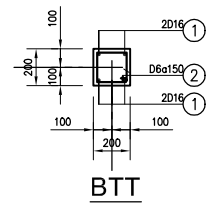
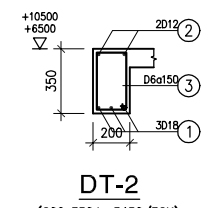
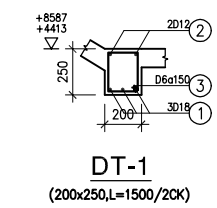
REFER TO DWG. PE-WWTP-304-25 FOR R.C RISER DETAILS



**B-B**  
1/50



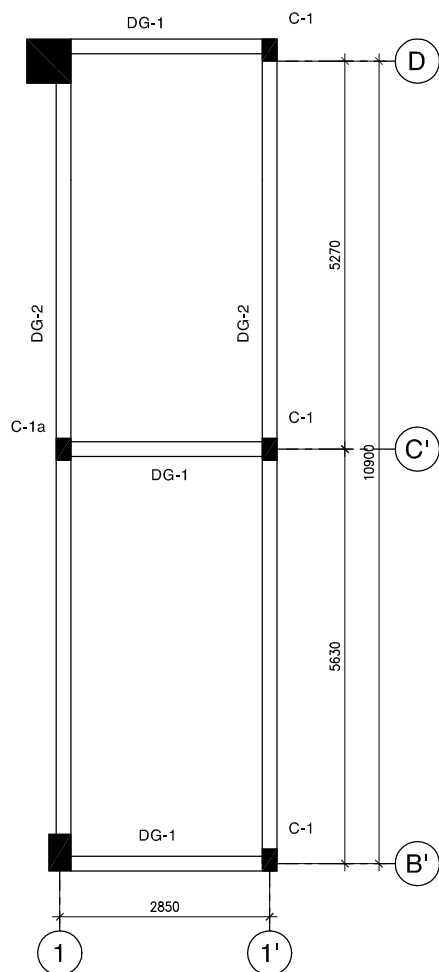
**A-A**  
1/50



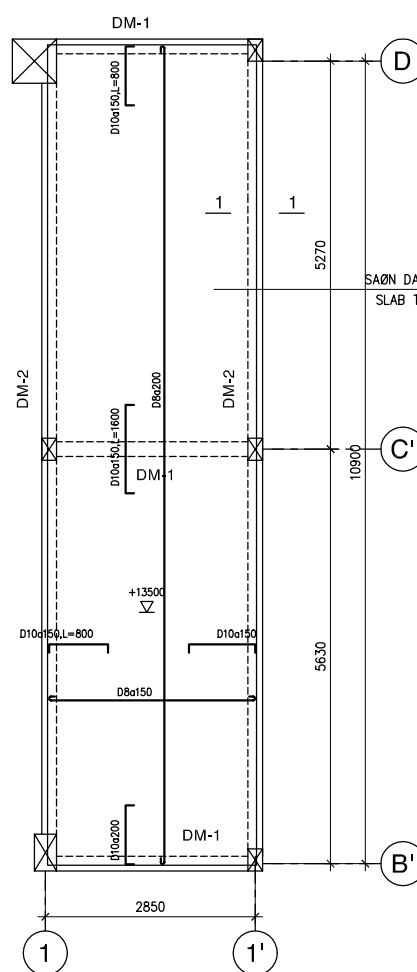
**DT-1**  
(200x250, L=1500/2CK)

**DT-2**  
(200x350, L=3450/3CK)

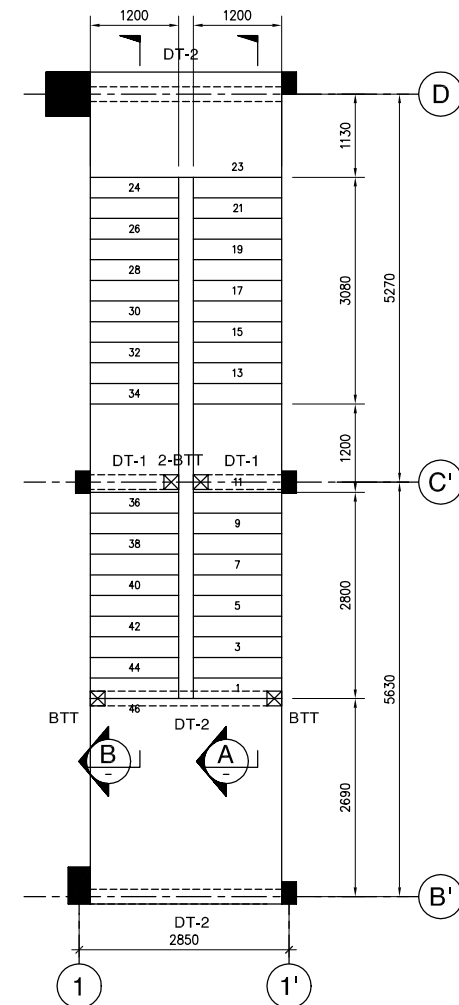
**BTT**  
(200x200/4CK)



**MẶT BẰNG ĐÀ GIẰNG CAO ĐỘ +7500**  
PLAN OF BRACING BEAM AT +7500  
1/50



**MẶT BẰNG MÁI**  
ROOF PLAN  
1/50



**MẶT BẰNG THANG**  
STAIRCASE PLAN  
1/50

NO.	DATE	DESCRIPTIONS	BY	APRO.

REVISIONS

PROJECT MANAGEMENT UNIT FOR  
HO CHI MINH CITY  
WATER ENVIRONMENT IMPROVEMENT

THE DETAILED DESIGN STUDY ON HO CHI MINH CITY  
WATER ENVIRONMENT IMPROVEMENT PROJECT  
IN THE SOCIALIST REPUBLIC OF VIET NAM

PACKAGE E  
WASTEWATER TREATMENT PLANT  
DEWATER BUILDING  
MISCELLANEOUS DETAILS

SCALE : N.T.S

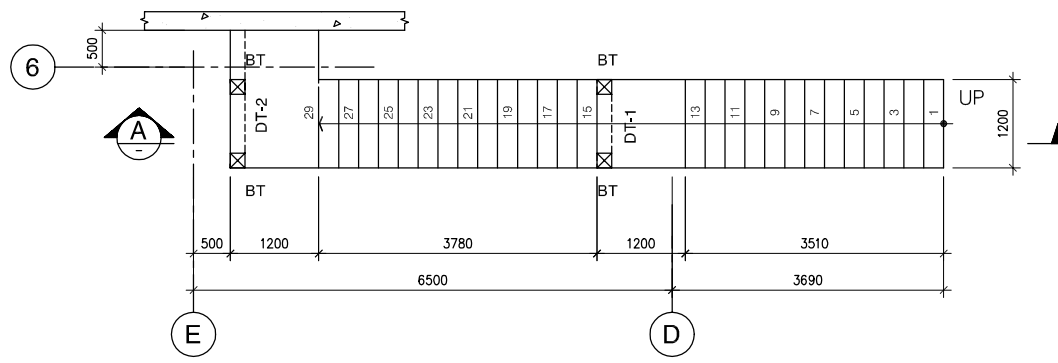
JICA JAPAN INTERNATIONAL COOPERATION  
AGENCY ( JICA )

PACIFIC CONSULTANTS INTERNATIONAL

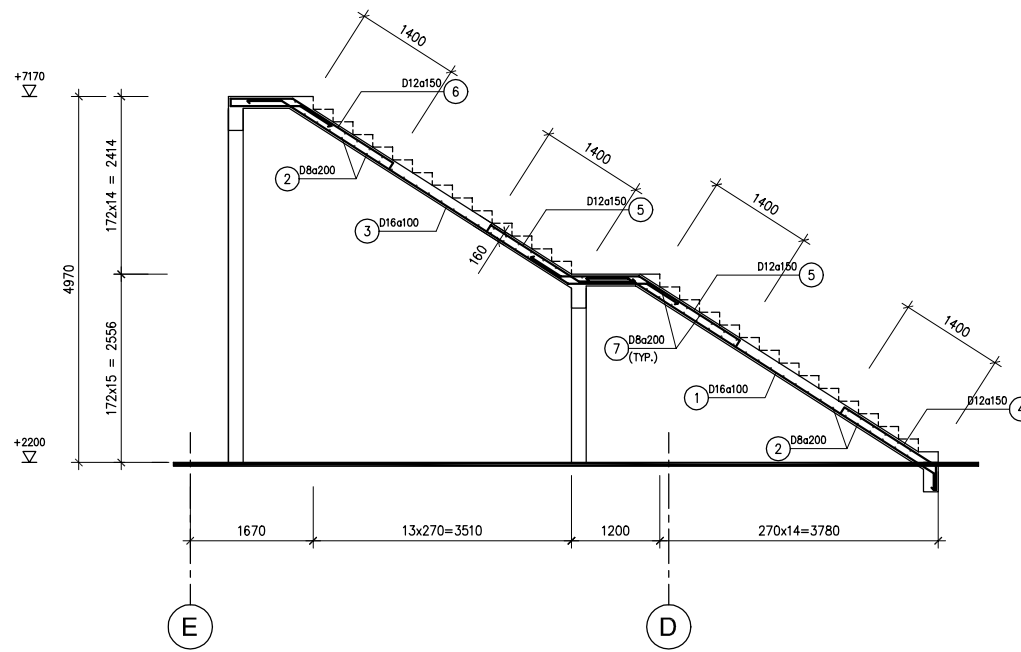
DESIGNED  
KIKUTA HIROSHI

CHECKED  
KONDO MASAMI

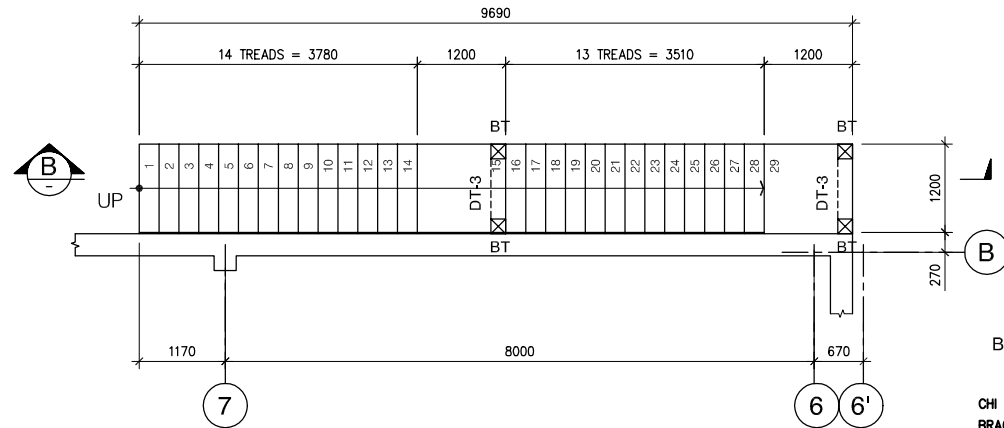
DATE : JUNE 2001 DWG. No. PE-WWTP-304-24



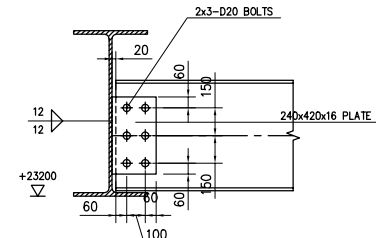
**MẶT BẰNG THANG 1**  
PLAN OF STAIR 1  
1/50



**A-A**  
1/50

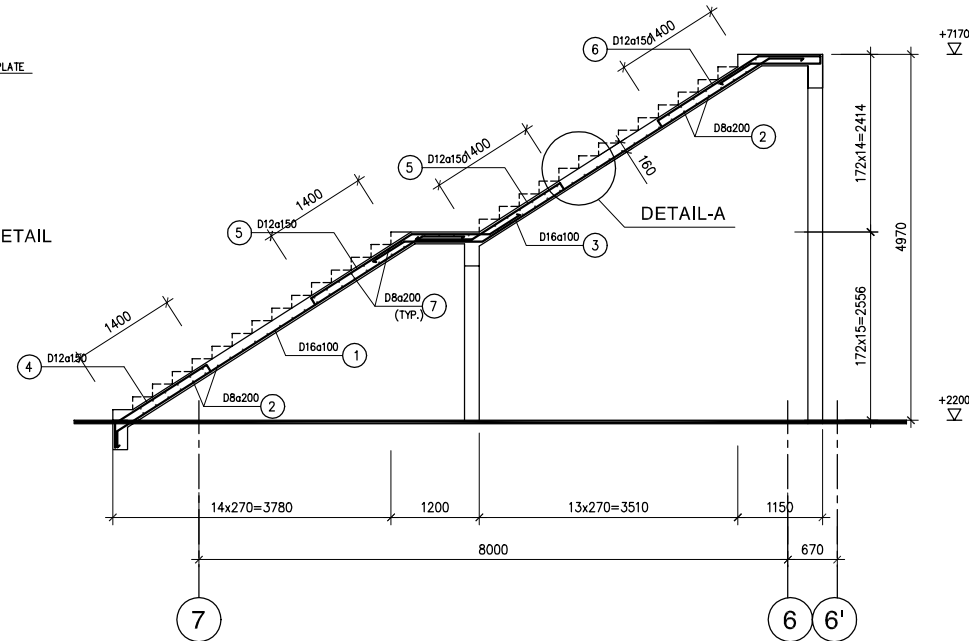


**MẶT BẰNG THANG 2**  
PLAN OF STAIR 2  
1/50

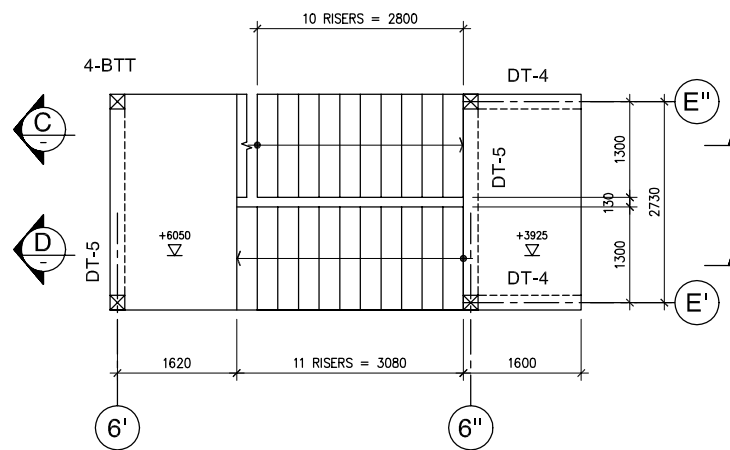


**CHI TIẾT LK ĐÀ GIẢNG ĐỌC VÀO DÀM MÁI**  
BRACING BEAM TO ROOF BEAM CONNECTION DETAIL  
1/20

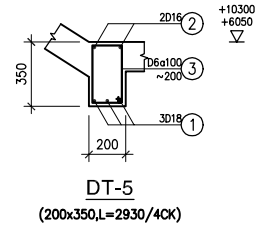
CHI TIẾT LIÊN KẾT RÀNG GIĂNG TỖ TRƯỚC 6~1 TƯƠNG TỬ  
BRACING BEAM CONNECTION DETAIL FROM GL 6~1 IS SIMILAR



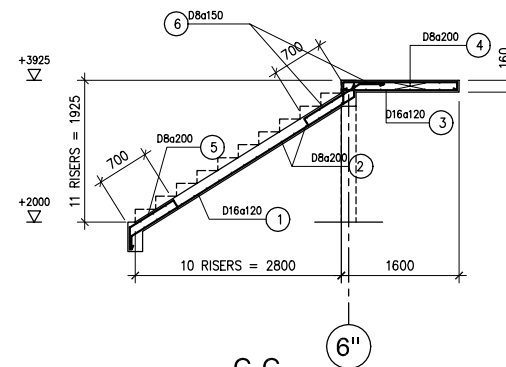
**B-B**  
1/50



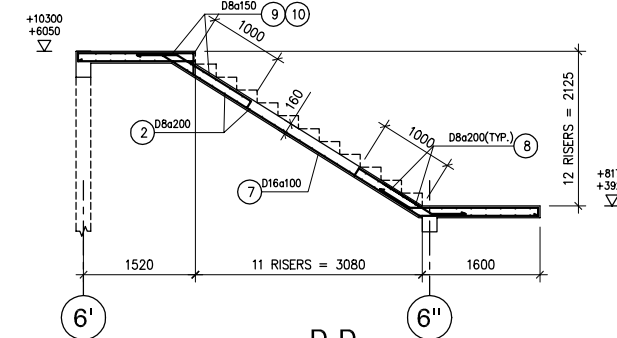
**MẶT BẰNG THANG 3**  
PLAN OF STAIR 3  
1/50



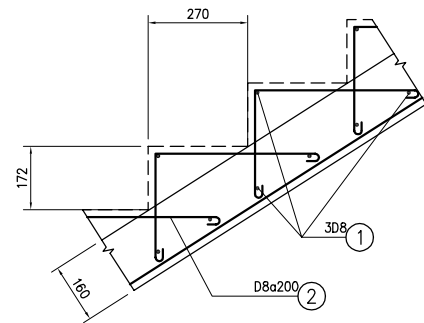
**DT-5**  
(200x350,L=2930/4CK)



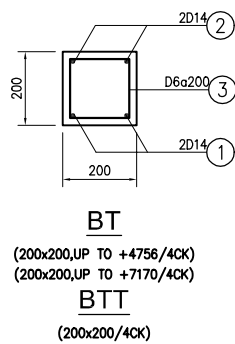
**C-C**  
1/50



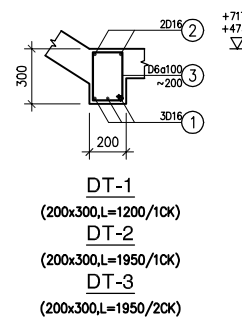
**D-D**  
1/50



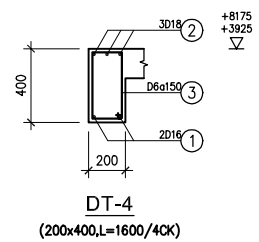
**CHI TIẾT A**  
DETAIL A  
(TYP. FOR ALL STAIRS)  
1/10



**BT**  
(200x200,UP TO +4756/4CK)  
(200x200,UP TO +7170/4CK)  
**BTT**  
(200x200/4CK)



**DT-1**  
(200x300,L=1200/1CK)  
**DT-2**  
(200x300,L=1950/1CK)  
**DT-3**  
(200x300,L=1950/2CK)



**DT-4**  
(200x400,L=1600/4CK)

NO.	DATE	DESCRIPTIONS	BY	APRO.

REVISIONS

PROJECT MANAGEMENT UNIT FOR  
HO CHI MINH CITY  
WATER ENVIRONMENT IMPROVEMENT

THE DETAILED DESIGN STUDY ON HO CHI MINH CITY  
WATER ENVIRONMENT IMPROVEMENT PROJECT  
IN THE SOCIALIST REPUBLIC OF VIET NAM

PACKAGE E  
WASTEWATER TREATMENT PLANT  
**DEWATER BUILDING  
STAIR DETAIL**

SCALE : N.T.S

JICA JAPAN INTERNATIONAL COOPERATION  
AGENCY ( JICA )

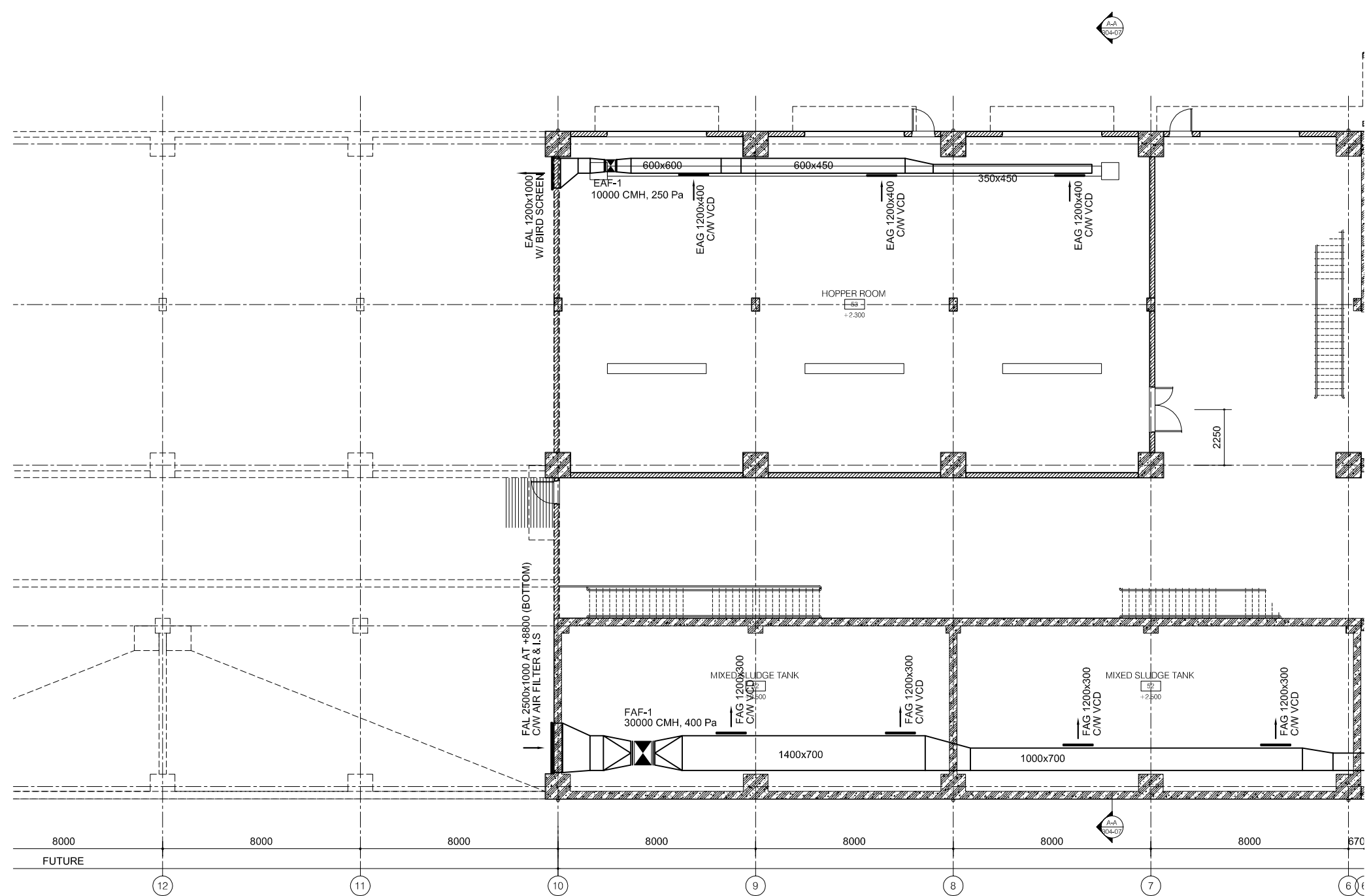
PACIFIC CONSULTANTS INTERNATIONAL

DESIGNED  
KIKUTA HIROSHI

CHECKED  
KONDO MASAMI

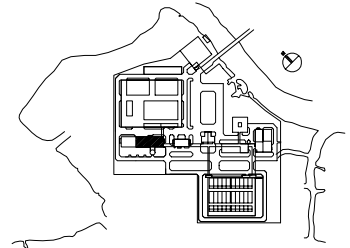
DATE : JUNE 2001 DWG. No. PE-WWTP-304-25





**FIRST FLOOR - MECHANICAL PLAN**  
SCALE: 1/100

- LEGEND :**
- EAG EXHAUST AIR GRILLE
  - EAF EXHAUST AIR FAN
  - EAL EXHAUST AIR LOUVRE
  - FAL FRESH AIR LOUVRE
  - W/ WITH
  - AXIAL FAN
  - WALL MOUNTED FAN
  - NON INSULATION
  - INTERNAL INSULATION 25mm THK



NO.	DATE	DESCRIPTIONS	BY	APRO.
REVISIONS				
PROJECT MANAGEMENT UNIT FOR HO CHI MINH CITY WATER ENVIRONMENT IMPROVEMENT				
THE DETAILED DESIGN STUDY ON HO CHI MINH CITY WATER ENVIRONMENT IMPROVEMENT PROJECT IN THE SOCIALIST REPUBLIC OF VIET NAM				
PACKAGE E WASTEWATER TREATMENT PLANT DEWATERING AND CENTRIFUGAL THICKENER BUILDING FIRST FLOOR PLAN (1/2) MECHANICAL PLAN				
SCALE : 1/100				
JAPAN INTERNATIONAL COOPERATION AGENCY ( JICA )				
PACIFIC CONSULTANTS INTERNATIONAL				
DESIGNED KIKUTA HIROSHI		CHECKED KONDO MASAMI		
DATE : JUNE 2001		DWG. No. PE-WWTP-304-26		