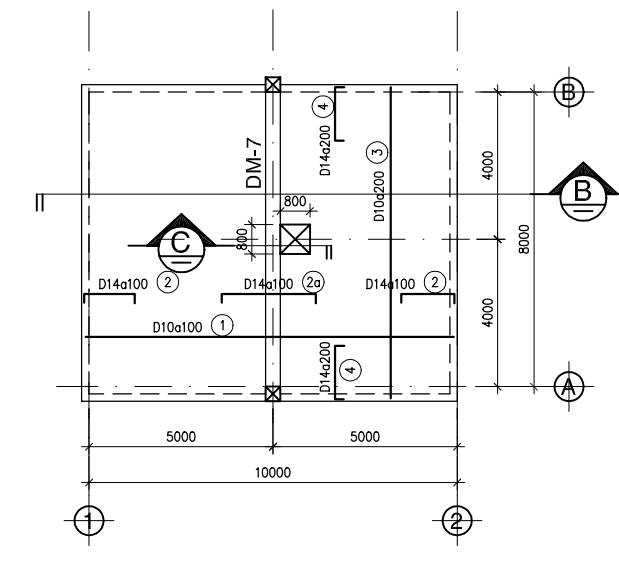
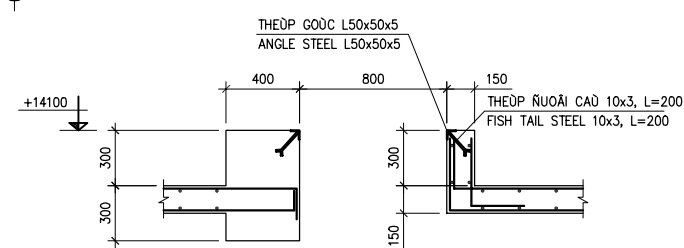


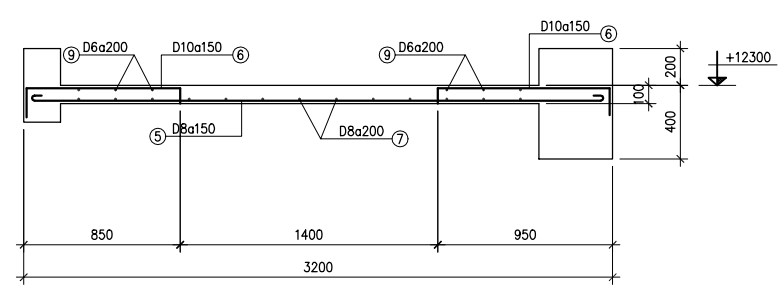
MẶT BẰNG CỘT, DÀM, SÀN TẦNG 2
PLAN OF 2nd COLUMNS, BEAMS, SLAB



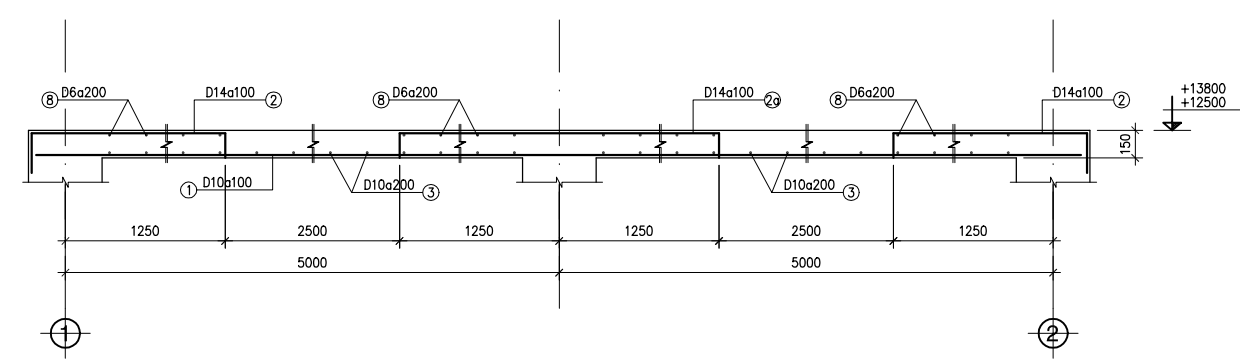
MẶT BẰNG NẮP BỂ
PLAN OF TANK COVER SLAB



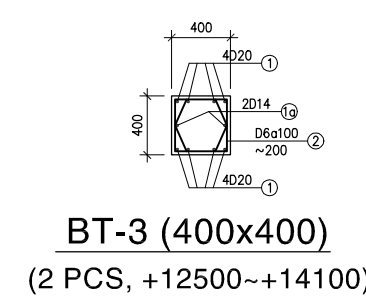
MẶT CẮT SECTION



MẶT CẮT SECTION



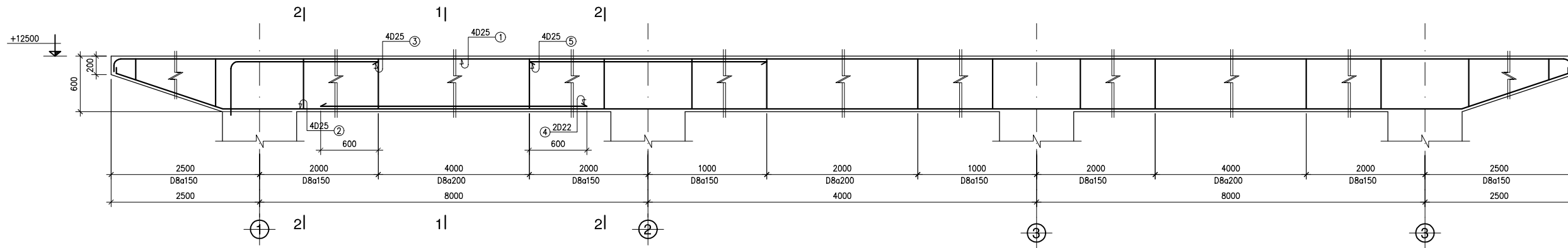
MẶT CẮT SECTION



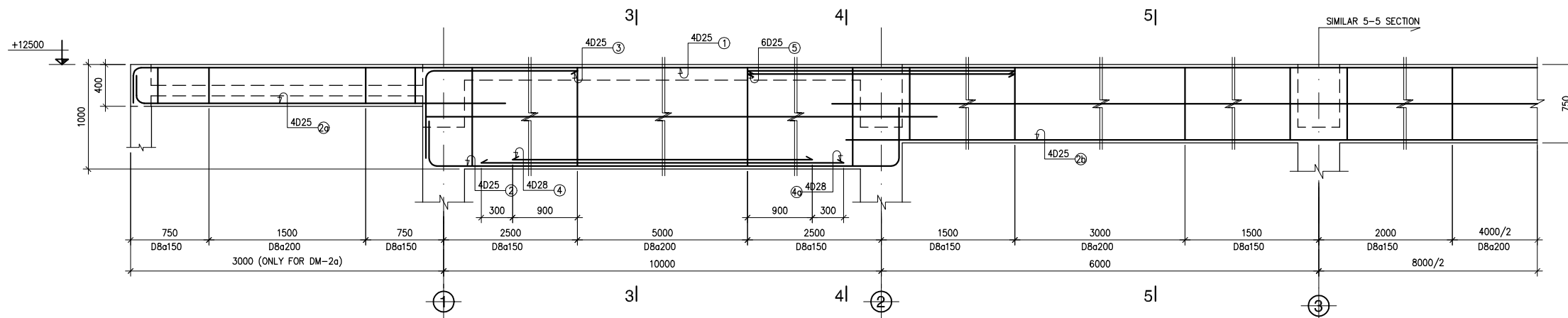
BT-3 (400x400)
(2 PCS, +12500~+14100)

GHI CHÚ :	NOTES :
BEA TOANG MAUC 300, RAO 10x20	CONCRETE GRADE 300, STONE 10x20
COAT THEOP : D<10 AI Ra=2300 kG/cm2	REINFORCEMENT : D<10 AI Ra=2300 kG/cm2
10<=D<16 All Ra=2800 kG/cm2	10<=D<16 All Ra=2800 kG/cm2
D>=16 All Ra=3600 kG/cm2	D>=16 All Ra=3600 kG/cm2

NO.	DATE	DESCRIPTIONS	BY	APRO.
REVISIONS				
PROJECT MANAGEMENT UNIT FOR HO CHI MINH CITY WATER ENVIRONMENT IMPROVEMENT				
THE DETAILED DESIGN STUDY ON HO CHI MINH CITY WATER ENVIRONMENT IMPROVEMENT PROJECT IN THE SOCIALIST REPUBLIC OF VIET NAM				
PACKAGE E WASTEWATER TREATMENT PLANT MAIN BUILDING PLAN OF ROOF SLAB & BEAMS				
SCALE : N.T.S				
JAPAN INTERNATIONAL COOPERATION AGENCY (JICA)				
PACIFIC CONSULTANTS INTERNATIONAL				
DESIGNED KIKUTA HIROSHI		CHECKED KONDO MASAMI		
DATE : JUNE 2001		DWG. No. PE-WWTP-303-17		

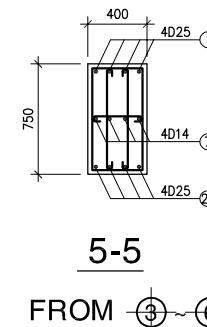


DM-3a (400x600)
(2 PCS, L=25000)

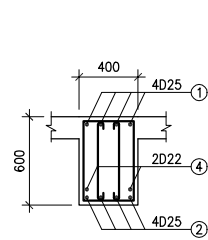


DM-2
(1 PCS, L=40400)

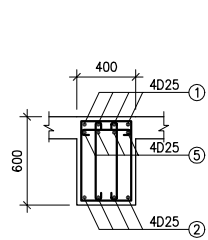
DM-2a
(1 PCS, L=46000)



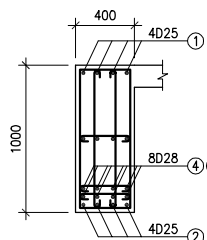
5-5
FROM ③ TO ⑥



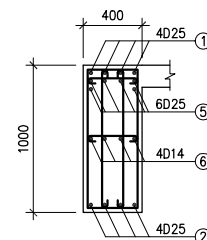
1-1



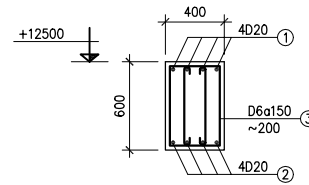
2-2



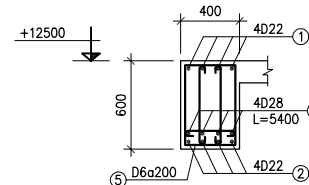
3-3



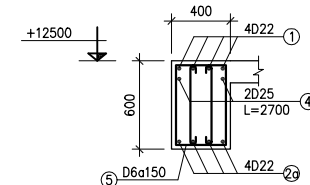
4-4



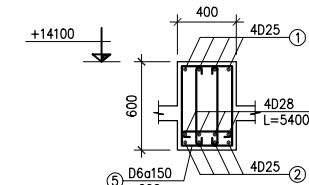
DM-3 (400x600)
(4 PCS, L=25000)



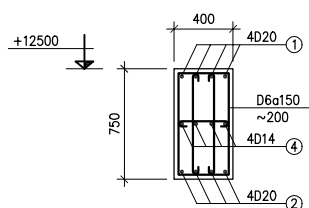
SPAN



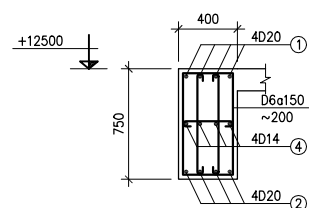
SUPPORT



DM-7 (400x600)
(1 PCS, L=8800)

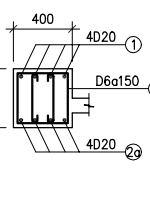


DM-1 (400x750)
(1 PCS, L=40400)

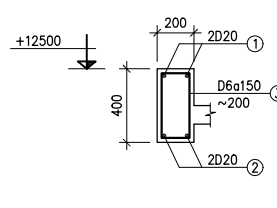


DM-1a
(1 PCS, L=46000)

SECTION ①-⑥



CONSOLE



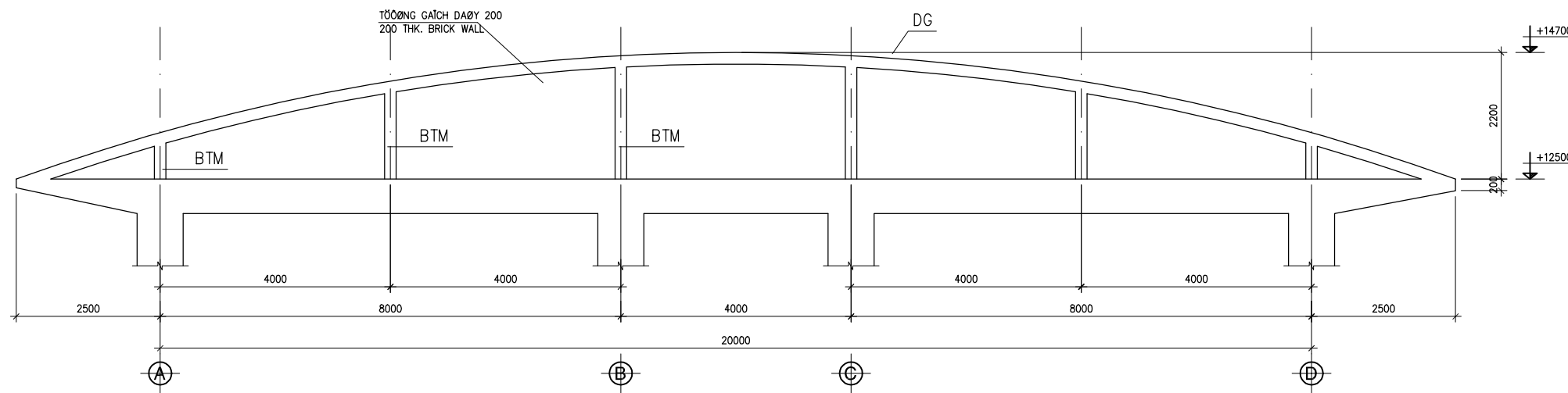
DM-5 (200x400)
(2 PCS, L=10000)

DM-6 (200x400)
(2 PCS, L=3200)

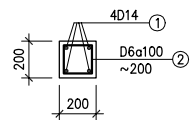
DM-4 (400x600)
(1 PCS, L=8800)

GHI CHÚ :	NOTES :
BEA TOANG MAUC 300, RAU 10x20	CONCRETE GRADE 300, STONE 10x20
COAT THEOP : D<10 AI Ra=2300 kG/cm ²	REINFORCEMENT : D<10 AI Ra=2300 kG/cm ²
10<=D<16 All Ra=2800 kG/cm ²	10<=D<16 All Ra=2800 kG/cm ²
D>=16 All Ra=3600 kG/cm ²	D>=16 All Ra=3600 kG/cm ²

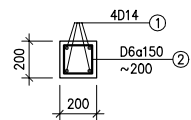
NO.	DATE	DESCRIPTIONS	BY	APRO.
REVISIONS				
PROJECT MANAGEMENT UNIT FOR HO CHI MINH CITY WATER ENVIRONMENT IMPROVEMENT				
THE DETAILED DESIGN STUDY ON HO CHI MINH CITY WATER ENVIRONMENT IMPROVEMENT PROJECT IN THE SOCIALIST REPUBLIC OF VIET NAM				
PACKAGE E WASTEWATER TREATMENT PLANT MAIN BUILDING DETAIL OF ROOF BEAMS				
SCALE : N.T.S				
JAPAN INTERNATIONAL COOPERATION AGENCY (JICA)				
PACIFIC CONSULTANTS INTERNATIONAL				
DESIGNED KIKUTA HIROSHI		CHECKED KONDO MASAMI		
DATE : JUNE 2001		DWG. No. PE-WWTP-303-18		



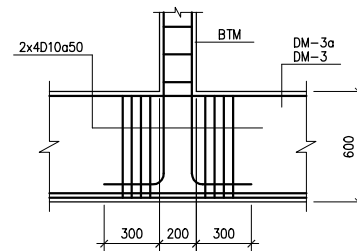
CHI TIẾT TƯỜNG HỒI
ROOF WALL DETAIL



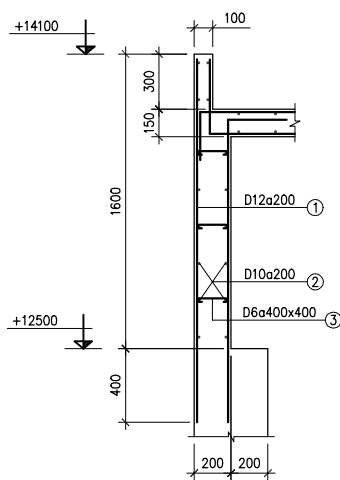
BTM (200x200)
(36 PCS)



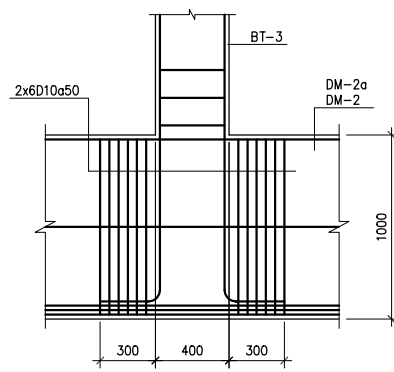
DG (200x200)
(6 PCS)



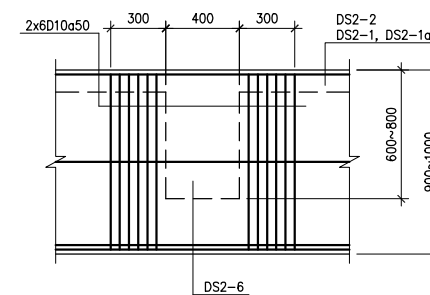
CHI TIẾT GIA CƯỜNG BỔ TRỢ
REINFORCING DETAIL FOR SUB-COLUMN



3 CHI TIẾT THÀNH BỂ (ĐIỂN HÌNH)
TANK R.C WALL DETAIL (TYP.)



2 CHI TIẾT GIA CƯỜNG
REINFORCING DETAIL



1 CHI TIẾT GIA CƯỜNG
REINFORCING DETAIL

GHI CHÚ :	NOTES :
BEÁT TỔNG MẠC 300, RIẾU 10x20	CONCRETE GRADE 300, STONE 10x20
COÁT THEÓP : D<10 All R _a =2300 kg/cm ²	REINFORCEMENT : D<10 All R _a =2300 kg/cm ²
10<=D<16 All R _a =2800 kg/cm ²	10<=D<16 All R _a =2800 kg/cm ²
D>=16 All R _a =3600 kg/cm ²	D>=16 All R _a =3600 kg/cm ²

NO.	DATE	DESCRIPTIONS	BY	APRO.

REVISIONS

PROJECT MANAGEMENT UNIT FOR
HO CHI MINH CITY
WATER ENVIRONMENT IMPROVEMENT

THE DETAILED DESIGN STUDY ON HO CHI MINH CITY
WATER ENVIRONMENT IMPROVEMENT PROJECT
IN THE SOCIALIST REPUBLIC OF VIET NAM

PACKAGE E
WASTEWATER TREATMENT PLANT
MAIN BUILDING
DETAIL OF ROOF WALL

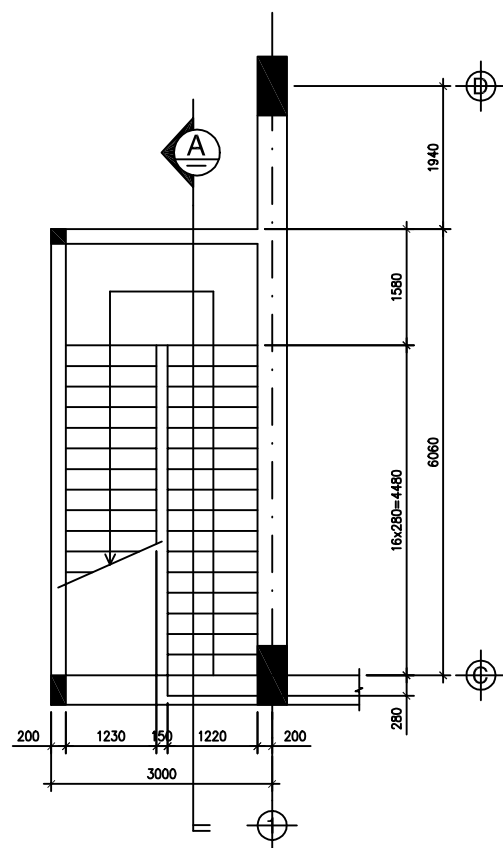
SCALE : N.T.S

JICA JAPAN INTERNATIONAL COOPERATION
AGENCY (JICA)

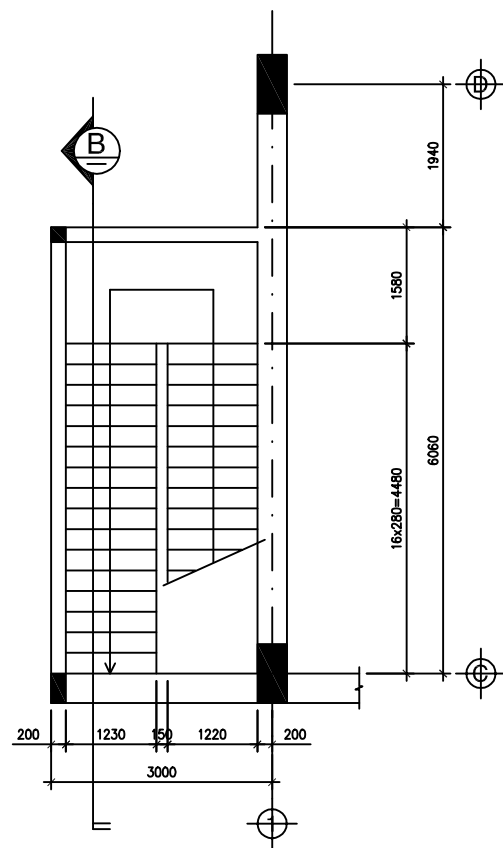
PACIFIC CONSULTANTS INTERNATIONAL

DESIGNED KIKUTA HIROSHI	CHECKED KONDO MASAMI
----------------------------	-------------------------

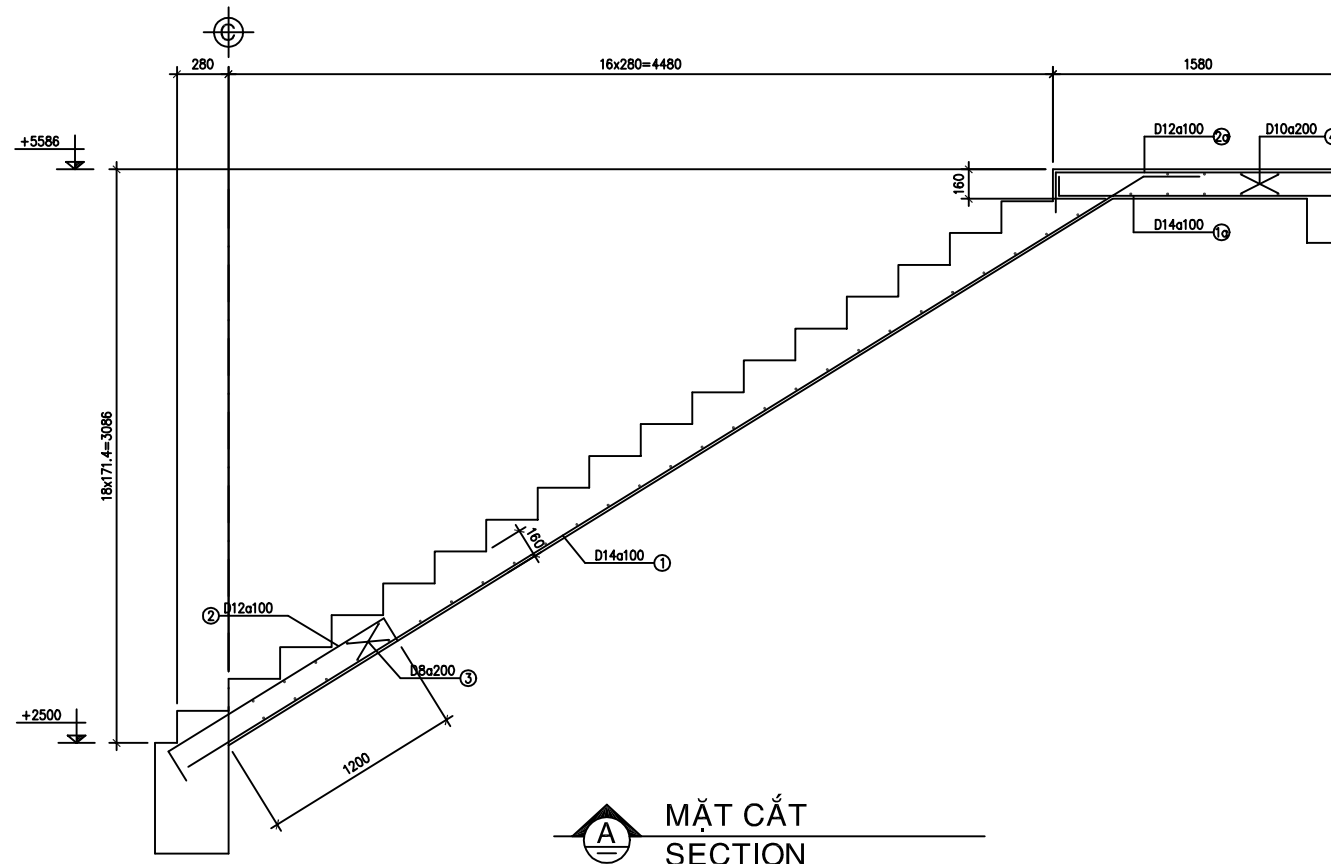
DATE : JUNE 2001 DWG. No. PE-WWTP-303-19



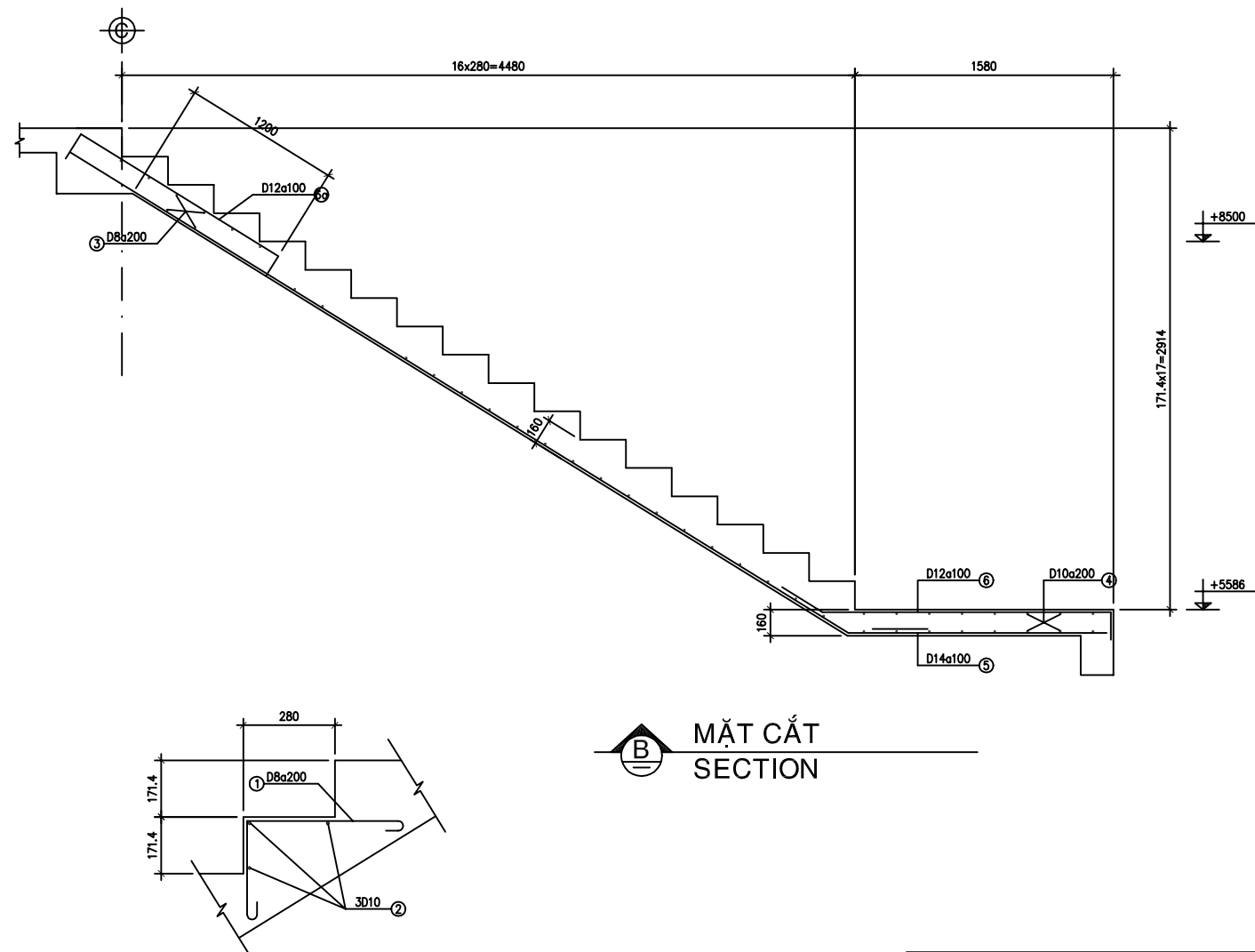
MẶT BẰNG TẦNG 1
1st FLOOR PLAN



MẶT BẰNG TẦNG 2
2nd FLOOR PLAN



MẶT CẮT SECTION A



MẶT CẮT SECTION B

CHI TIẾT BẬC THANG
DETAIL OF STEPS

GHI CHÚ :	NOTES :
BE TÔNG MẠC 300, RIẾM 10x20	CONCRETE GRADE 300, STONE 10x20
COÁT THEOP : D<10 A I R _a =2300 kG/cm ²	REINFORCEMENT : D<10 A I R _a =2300 kG/cm ²
10<=D<16 A II R _a =2800 kG/cm ²	10<=D<16 A II R _a =2800 kG/cm ²
D>=16 A III R _a =3600 kG/cm ²	D>=16 A III R _a =3600 kG/cm ²

NO.	DATE	DESCRIPTIONS	BY	APRO.

REVISIONS				

PROJECT MANAGEMENT UNIT FOR
HO CHI MINH CITY
WATER ENVIRONMENT IMPROVEMENT

THE DETAILED DESIGN STUDY ON HO CHI MINH CITY
WATER ENVIRONMENT IMPROVEMENT PROJECT
IN THE SOCIALIST REPUBLIC OF VIET NAM

PACKAGE E
WASTEWATER TREATMENT PLANT
MAIN BUILDING
PLAN & DETAIL OF STAIRCASE

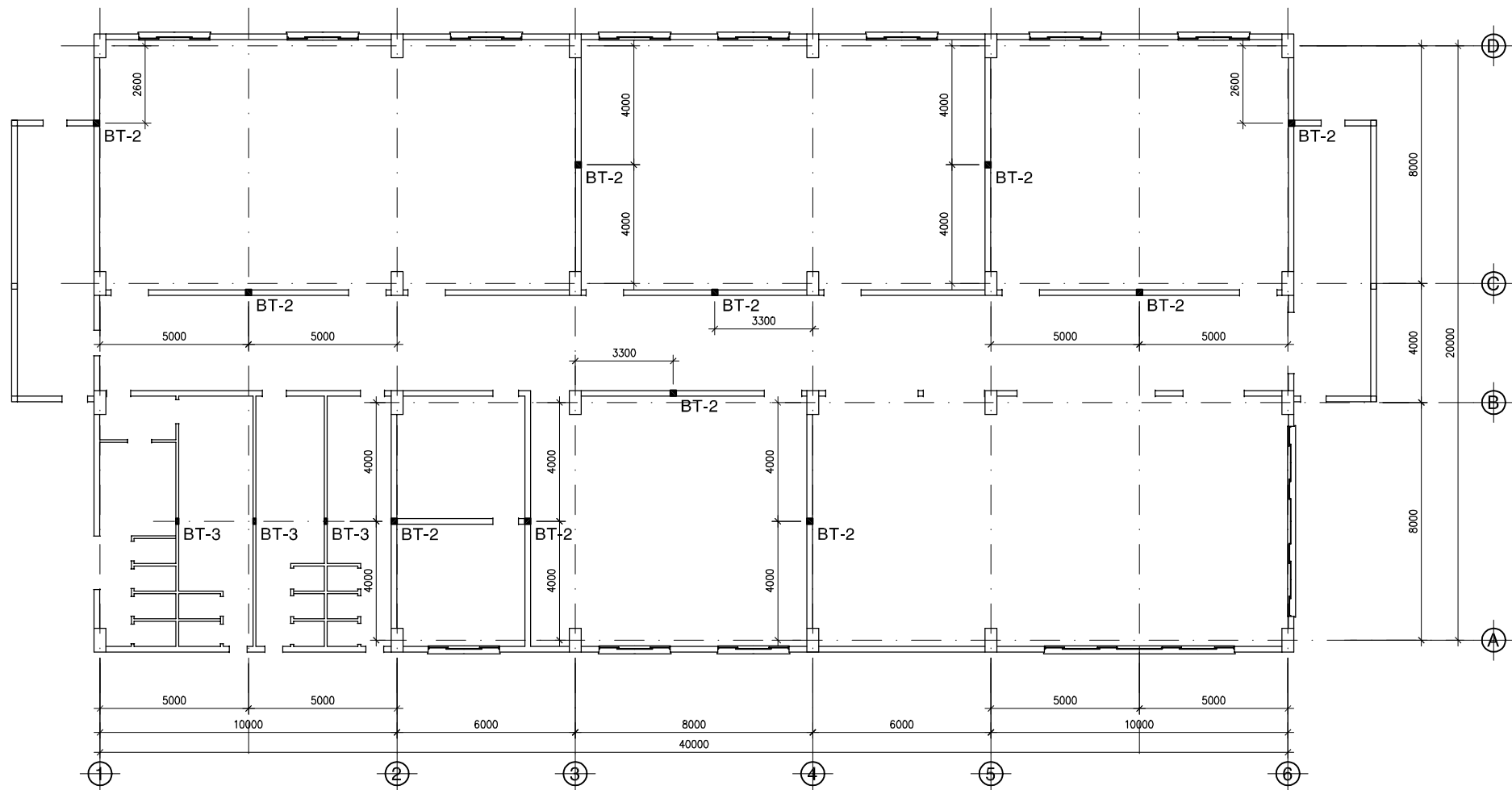
SCALE : N.T.S

JAPAN INTERNATIONAL COOPERATION AGENCY (JICA)

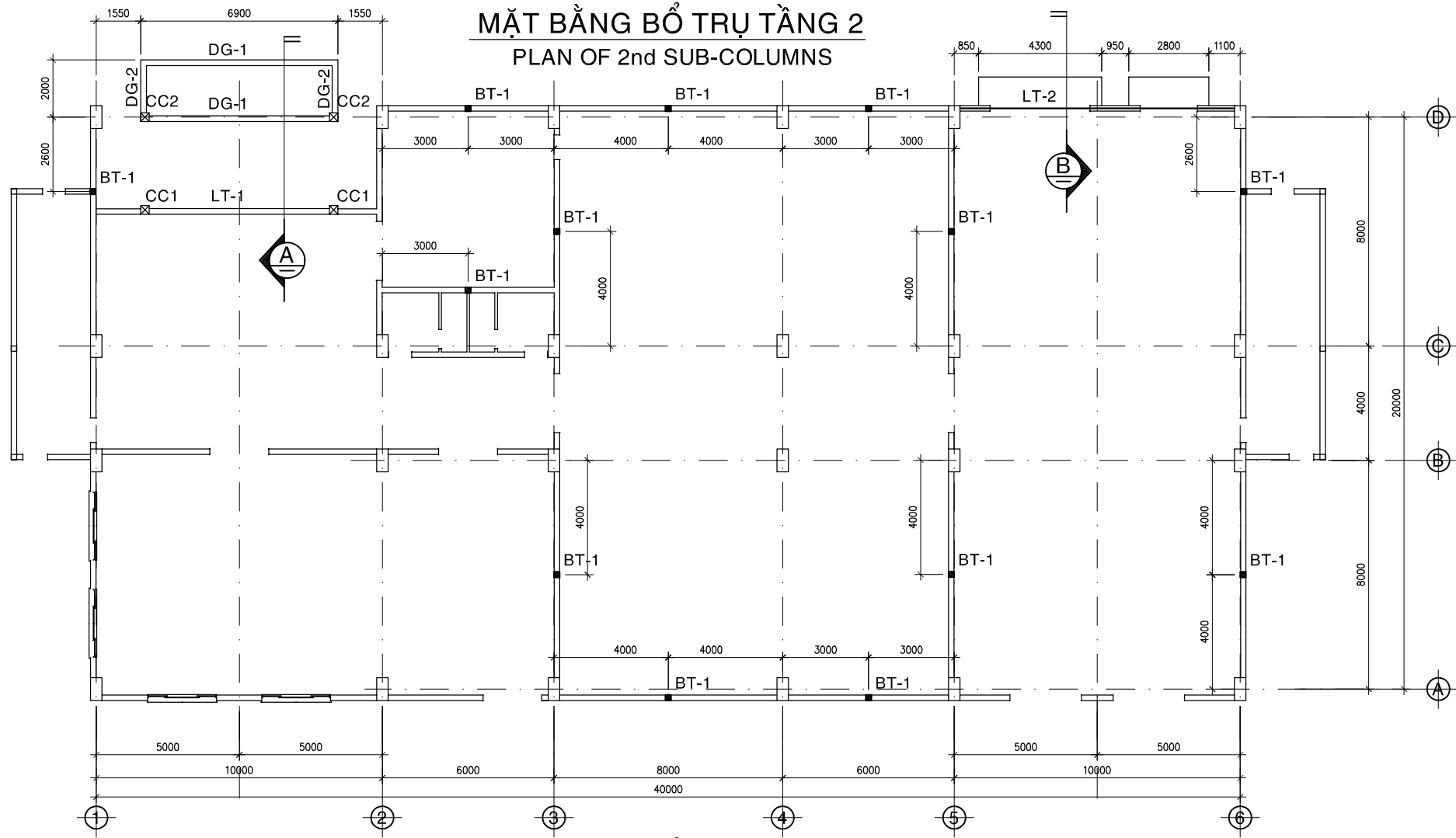
PACIFIC CONSULTANTS INTERNATIONAL

DESIGNED KIKUTA HIROSHI	CHECKED KONDO MASAMI
----------------------------	-------------------------

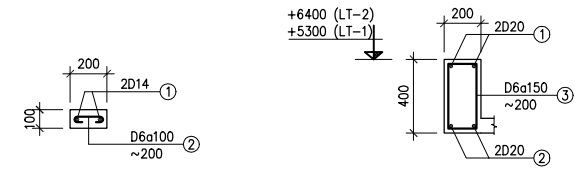
DATE : JUNE 2001 DWG. No. PE-WWTP-303-20



MẶT BẰNG BỔ TRỤ TẦNG 2
PLAN OF 2nd SUB-COLUMNS



MẶT BẰNG BỔ TRỤ TẦNG 1
PLAN OF 1st SUB-COLUMNS



BT-3 (100x200)
(3 PCS, +8500~+12500)

LT-1 (200x400)
(1 PCS, L=6900)

LT-2 (200x400)
(1 PCS, L=10000)

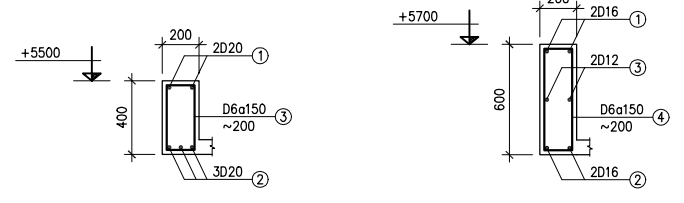


BT-1 (200x200)
(13 PCS, +2500~+8500)

CC1 (300x300)
(2 PCS, +2500~+5300)

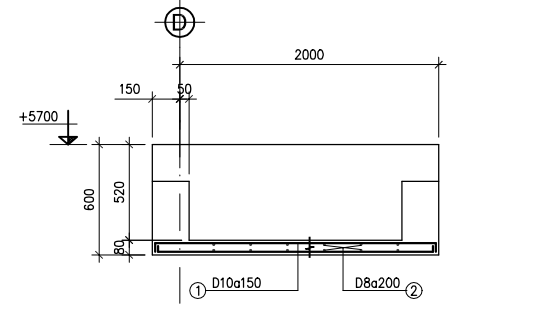
BT-2 (200x200)
(11 PCS, +8500~+12500)

CC2 (300x300)
(2 PCS, +2500~+5700)

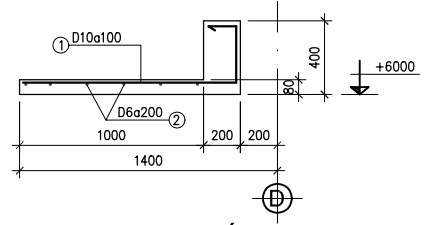


DG-1 (200x400)
(2 PCS, L=6900)

DG-2 (200x600)
(2 PCS, L=2150)



MẶT CẮT SECTION A

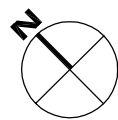
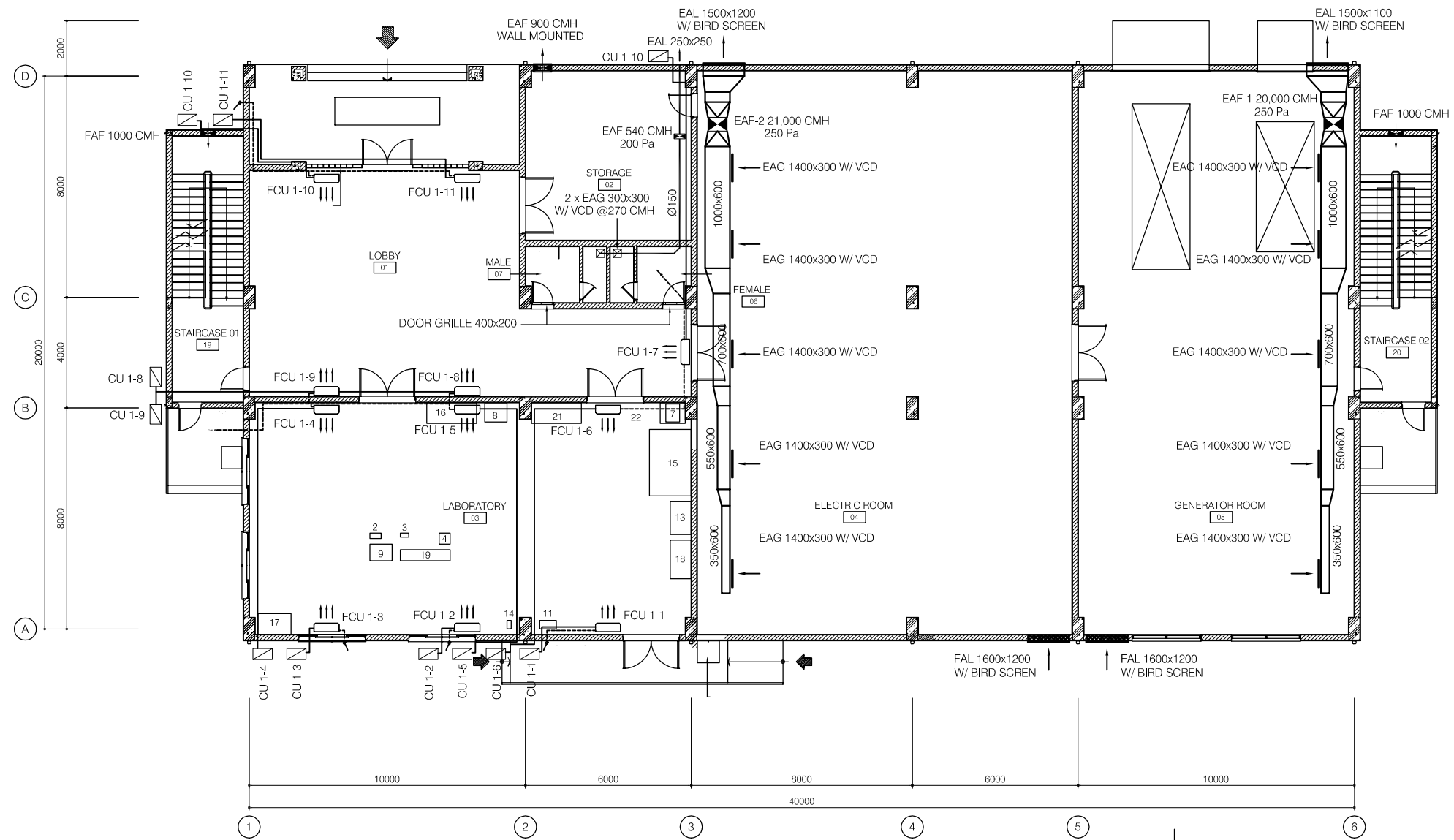


MẶT CẮT SECTION B

GHI CHÚ :
 BÊ TÔNG MẠC 300, RIÊU 10x20
 COÁT THÉP : D<10 All Ra=2300 kG/cm²
 10<=D<16 All Ra=2800 kG/cm²
 D>=16 All Ra=3600 kG/cm²

NOTES :
 CONCRETE GRADE 300, STONE 10x20
 REINFORCEMENT : D<10 All Ra=2300 kG/cm²
 10<=D<16 All Ra=2800 kG/cm²
 D>=16 All Ra=3600 kG/cm²

NO.	DATE	DESCRIPTIONS	BY	APRO.
REVISIONS				
PROJECT MANAGEMENT UNIT FOR HO CHI MINH CITY WATER ENVIRONMENT IMPROVEMENT				
THE DETAILED DESIGN STUDY ON HO CHI MINH CITY WATER ENVIRONMENT IMPROVEMENT PROJECT IN THE SOCIALIST REPUBLIC OF VIET NAM				
PACKAGE E WASTEWATER TREATMENT PLANT MAIN BUILDING PLAN & DETAIL OF SUB-COLUMNS				
SCALE : N.T.S				
JAPAN INTERNATIONAL COOPERATION AGENCY (JICA)				
PACIFIC CONSULTANTS INTERNATIONAL				
DESIGNED KIKUTA HIROSHI		CHECKED KONDO MASAMI		
DATE : JUNE 2001		DWG. No. PE-WWTP-303-21		



FIRST FLOOR - MECHANICAL PLAN

SCALE: 1/100

NOTE :

1/. COOLING CAPACITY :

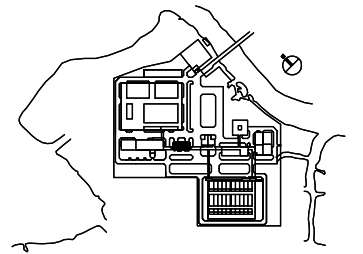
FCU 1-1,2,5,6	18000 BTU/HR (WALL MOUNTED SPLIT TYPE)
FCU 1-3,4	24000 BTU/HR (WALL MOUNTED SPLIT TYPE)
FCU 1-7,8,9	12000 BTU/HR (WALL MOUNTED SPLIT TYPE)
FCU 1-10,11	18000 BTU/HR (WALL MOUNTED SPLIT TYPE)

2/.

- SUCTION & LIQUIT PIPE SHALL BE IN TRUNKING 100x75
- INSULATION FOR GAS PIPE SHALL BE NITRIL CLOSED CELL TUBE 13mm THK
- ALL CONDENSATE DRAIN PIPE FOR EACH AC UNIT SHALL BE PVCØ21 PIPE C/W INSULATION 10mm THK

LEGEND :

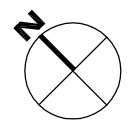
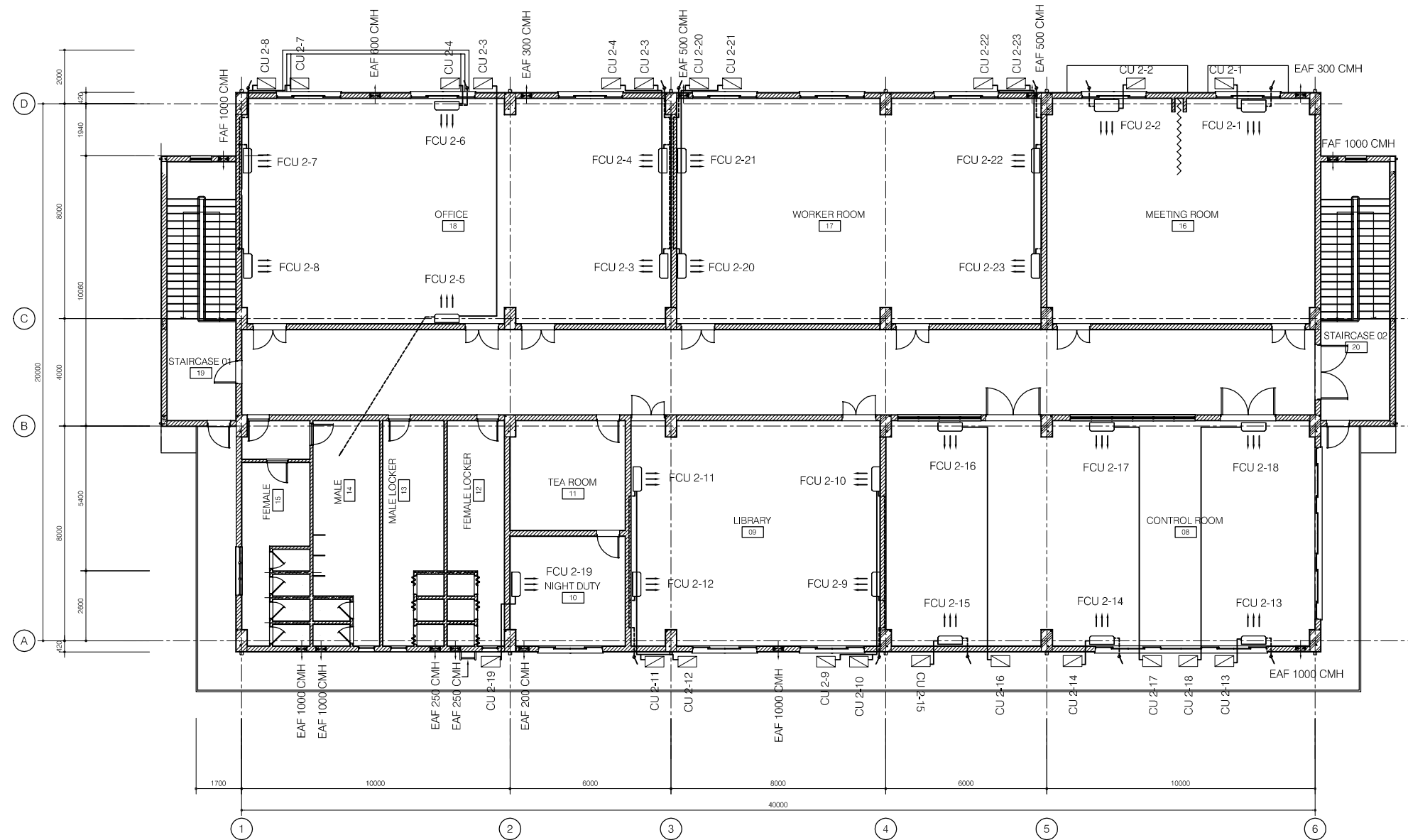
- EAG EXHAUST AIR GRILLE
- EAF EXHAUST AIR FAN
- EAL EXHAUST AIR LOUVRE
- FAL FRESH AIR LOUVRE
- W/ WITH
- AXIAL FAN
- WALL MOUNTED FAN
- NON INSULATION
- INTERNAL INSULATION 25mm THK



NO.	DATE	DESCRIPTIONS	BY	APRO.

REVISIONS	
PROJECT MANAGEMENT UNIT FOR HO CHI MINH CITY WATER ENVIRONMENT IMPROVEMENT	
THE DETAILED DESIGN STUDY ON HO CHI MINH CITY WATER ENVIRONMENT IMPROVEMENT PROJECT IN THE SOCIALIST REPUBLIC OF VIET NAM	
PACKAGE E WASTEWATER TREATMENT PLANT MAIN BUILDING FIRST FLOOR PLAN MECHANICAL PLAN	

SCALE : 1/100	
JAPAN INTERNATIONAL COOPERATION AGENCY (JICA)	
PACIFIC CONSULTANTS INTERNATIONAL	
DESIGNED KIKUTA HIROSHI	CHECKED KONDO MASAMI
DATE : JUNE 2001	DWG. No. PE-WWTP-303-22



SECOND FLOOR - MECHANICAL PLAN

SCALE: 1/100

NOTE :

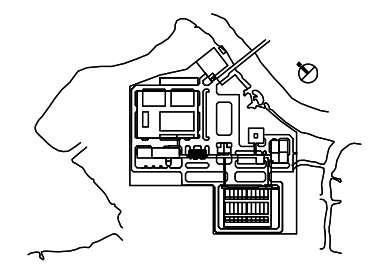
- 1/. COOLING CAPACITY :

FCU 2-1,2	30000 BTU/HR (CEILING SUSPENDED SPLIT TYPE)
FCU 2-3,4,5,6,7,8	18000 BTU/HR (WALL MOUNTED SPLIT TYPE)
FCU 2-9,10,11,12	18000 BTU/HR (WALL MOUNTED SPLIT TYPE)
FCU 2-13,14,15,16,17,18	18000 BTU/HR (WALL MOUNTED SPLIT TYPE)
FCU 2-20, 21, 22, 23	24000 BTU/HR (UNDER CEILING SPLIT TYPE)
FCU 2-19	9000 BTU/HR (WALL MOUNTED SPLIT TYPE)

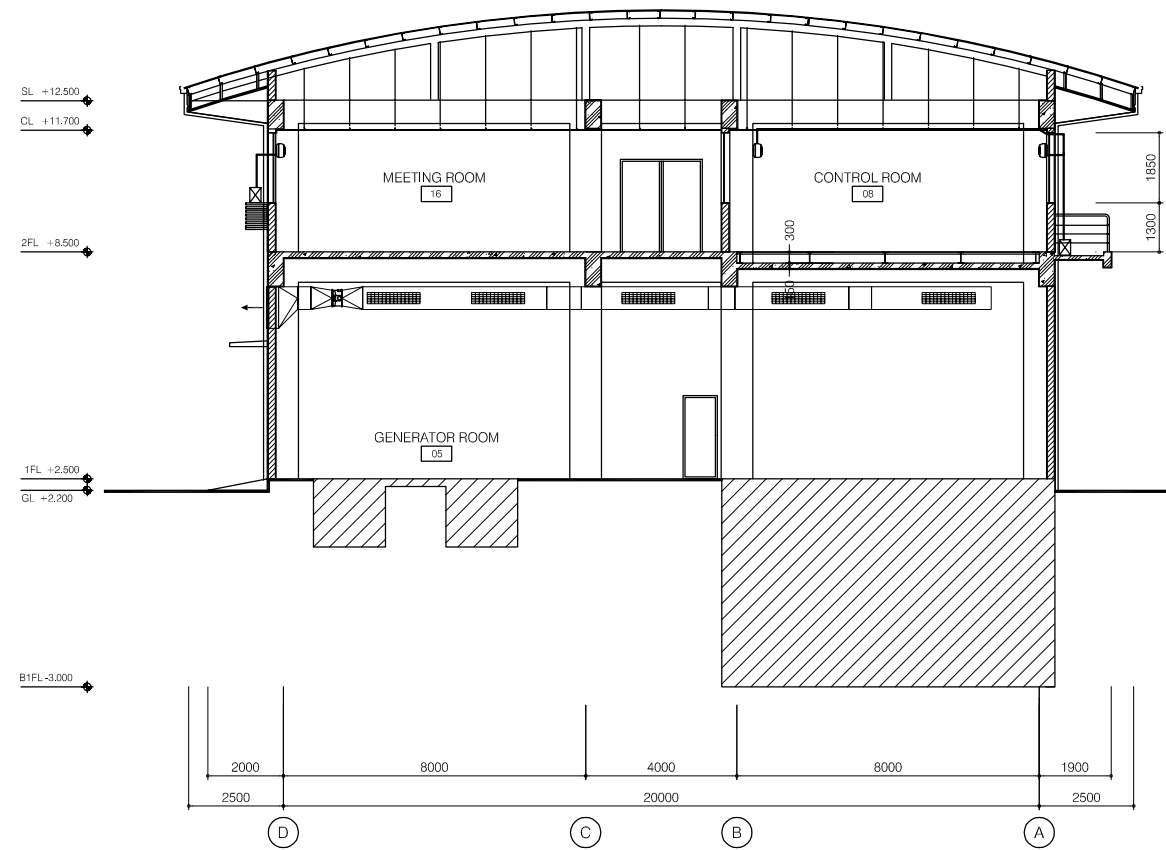
- 2/.
 - SUCTION & LIQUIT PIPE SHALL BE IN TRUNKING 100x75
 - INSULATION FOR GAS PIPE SHALL BE NITRIL CLOSED CELL TUBE 13mm THK
 - ALL CONDENSATE DRAIN PIPE FOR EACH AC UNIT SHALL BE PVCØ21 PIPE C/W INSULATION 10mmTHK

LEGEND :

- EAG EXHAUST AIR GRILLE
- EAF EXHAUST AIR FAN
- EAL EXHAUST AIR LOUVRE
- FAL FRESH AIR LOUVRE
- W/ WITH
- AXIAL FAN
- WALL MOUNTED FAN
- NON INSULATION
- INTERNAL INSULATION 25mm THK



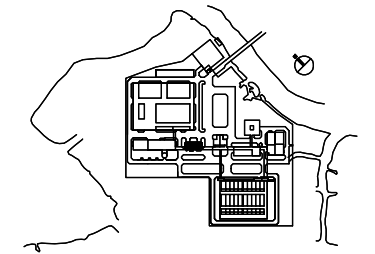
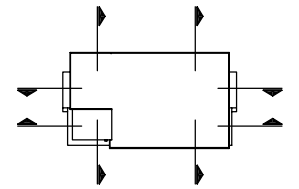
NO.	DATE	DESCRIPTIONS	BY	APRO.
REVISIONS				
PROJECT MANAGEMENT UNIT FOR HO CHI MINH CITY WATER ENVIRONMENT IMPROVEMENT				
THE DETAILED DESIGN STUDY ON HO CHI MINH CITY WATER ENVIRONMENT IMPROVEMENT PROJECT IN THE SOCIALIST REPUBLIC OF VIET NAM				
PACKAGE E WASTEWATER TREATMENT PLANT MAIN BUILDING SECOND FLOOR PLAN MECHANICAL PLAN				
SCALE : X/100				
JAPAN INTERNATIONAL COOPERATION AGENCY (JICA)				
PACIFIC CONSULTANTS INTERNATIONAL				
DESIGNED KIKUTA HIROSHI		CHECKED KONDO MASAMI		
DATE : JUNE 2001		DWG. No. PE-WWTP-303-23		



SECTION B-B
SCALE:1/100

LEGEND :

- EAG EXHAUST AIR GRILLE
- EAF EXHAUST AIR FAN
- EAL EXHAUST AIR LOUVRE
- FAL FRESH AIR LOUVRE
- W/ WITH
- ☒ AXIAL FAN
- ☐ WALL MOUNTED FAN
- ▭ NON INSULATION
- ▨ INTERNAL INSULATION 25mm THK



NO.	DATE	DESCRIPTIONS	BY	APRO.

REVISIONS

PROJECT MANAGEMENT UNIT FOR
HO CHI MINH CITY
WATER ENVIRONMENT IMPROVEMENT

THE DETAILED DESIGN STUDY ON HO CHI MINH CITY
WATER ENVIRONMENT IMPROVEMENT PROJECT
IN THE SOCIALIST REPUBLIC OF VIET NAM

PACKAGE E
WASTEWATER TREATMENT PLANT

MAIN BUILDING
MECHANICAL SECTION

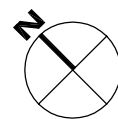
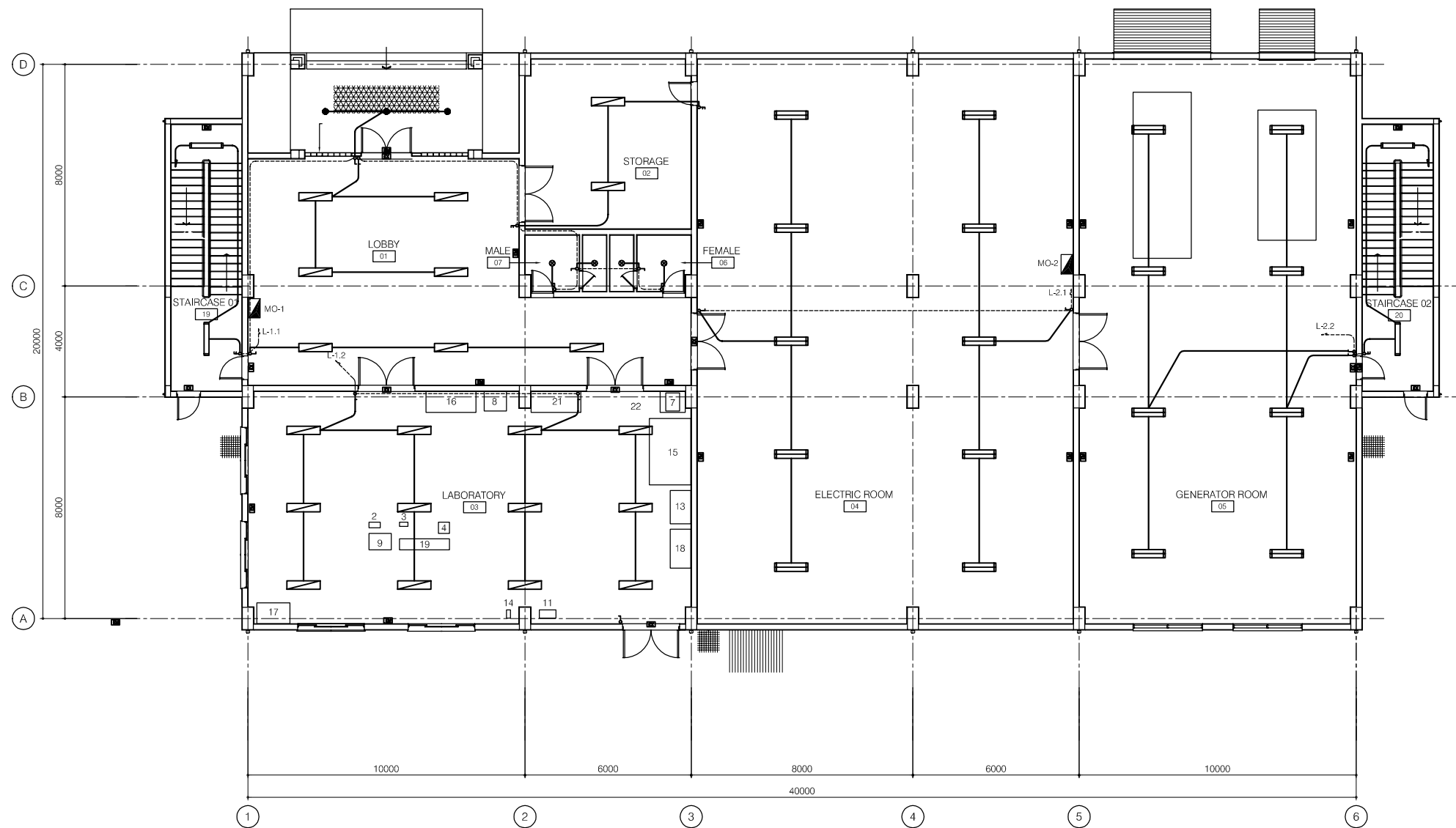
SCALE : 1/100

JAPAN INTERNATIONAL COOPERATION AGENCY (JICA)

PACIFIC CONSULTANTS INTERNATIONAL

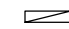




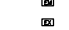
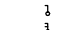





DESIGNED KIKUTA HIROSHI	CHECKED KONDO MASAMI
----------------------------	-------------------------

DATE : JUNE 2001 DWG. No. PE-WWTP-303-24



FIRST FLOOR - LIGHTING PLAN
SCALE : 1/100

LEGEND:

-  2x40W FLUORESCENT LAMP, RECESSED TYPE
-  2x40W FLUORESCENT LAMP, CEILING MOUNTED TYPE
-  1x40W FLUORESCENT LAMP, BATTEN
-  1x40W FLUORESCENT LAMP, MOUNTED TYPE
-  1x60W LAMP (FOR WC)
-  DOWNLIGHT
-  1x60W CEILING MOUNTED TYPE
-  EMERGENCY LIGHT
-  EXIT LIGHT
-  SINGLE SWITCH 220-10A
-  2 WAY SWITCH 220-10A
-  DISTRIBUTION BOARD

NO.	DATE	DESCRIPTIONS	BY	APRO.

REVISIONS

PROJECT MANAGEMENT UNIT FOR
HO CHI MINH CITY
WATER ENVIRONMENT IMPROVEMENT

THE DETAILED DESIGN STUDY ON HO CHI MINH CITY
WATER ENVIRONMENT IMPROVEMENT PROJECT
IN THE SOCIALIST REPUBLIC OF VIET NAM

PACKAGE E
WASTEWATER TREATMENT PLANT
MAIN OFFICE BUILDING
FIRST FLOOR PLAN
LIGHTING LAYOUT PLAN

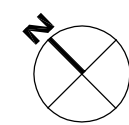
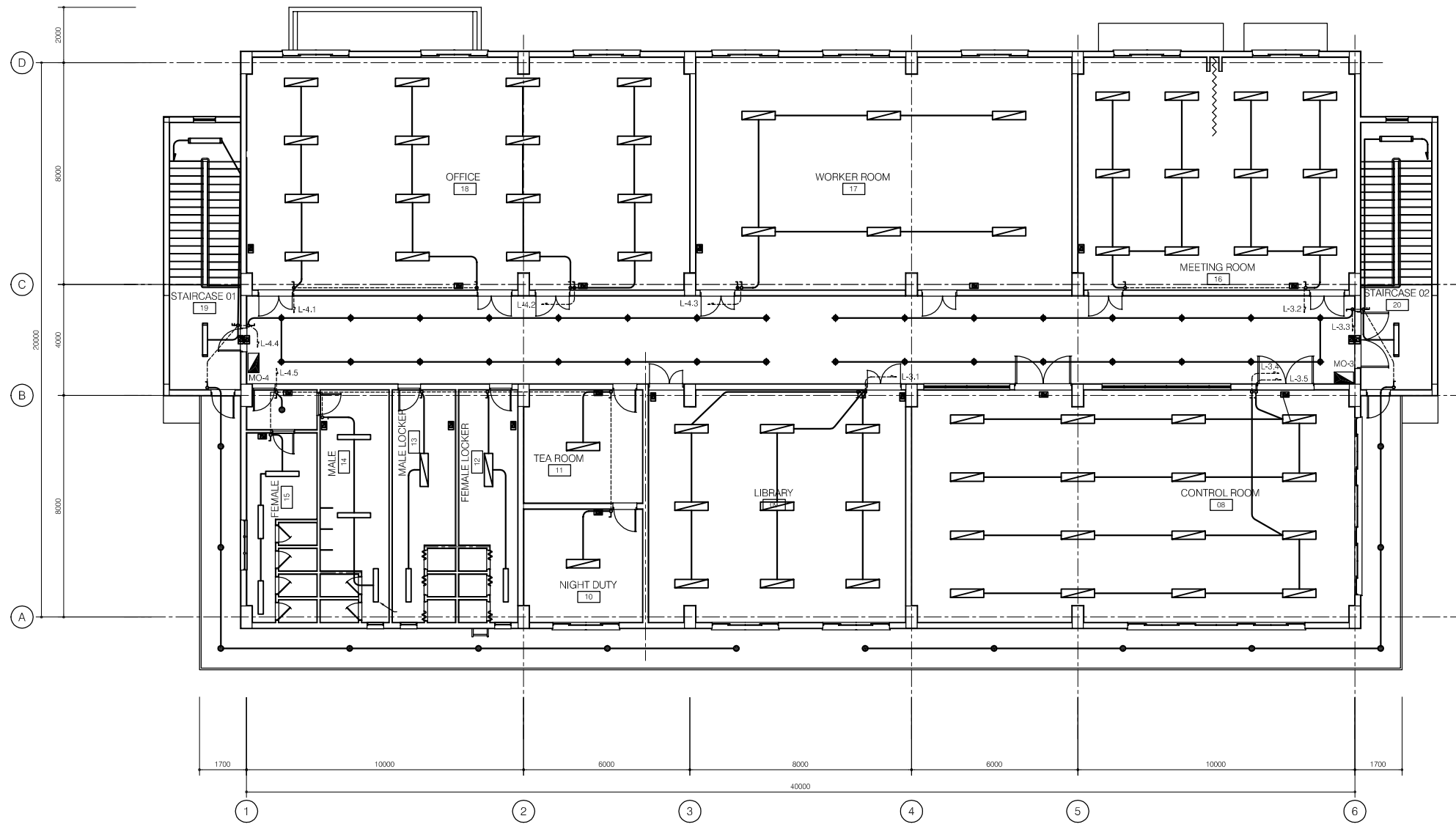
SCALE : 1/100

 JAPAN INTERNATIONAL COOPERATION
AGENCY (JICA)

 PACIFIC CONSULTANTS INTERNATIONAL

DESIGNED KIKUTA HIROSHI	CHECKED KONDO MASAMI
----------------------------	-------------------------

DATE : JUNE 2001 DWG. No. PE-WWTP-303-25



SECOND FLOOR - LIGHTING PLAN
SCALE: 1/100

- LEGEND:
- 2x40W FLUORESCENT LAMP, RECESSED TYPE
 - 2x40W FLUORESCENT LAMP, CEILING MOUNTED TYPE
 - 1x40W FLUORESCENT LAMP, BATTEN
 - 1x40W FLUORESCENT LAMP, MOUNTED TYPE
 - 1x60W LAMP (FOR WC)
 - DOWNLIGHT
 - 1x60W CEILING MOUNTED TYPE
 - EMERGENCY LIGHT
 - EXIT LIGHT
 - SINGLE SWITCH 220-10A
 - 2 WAY SWITCH 220-10A
 - DISTRIBUTION BOARD

NO.	DATE	DESCRIPTIONS	BY	APRO.

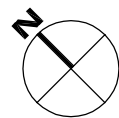
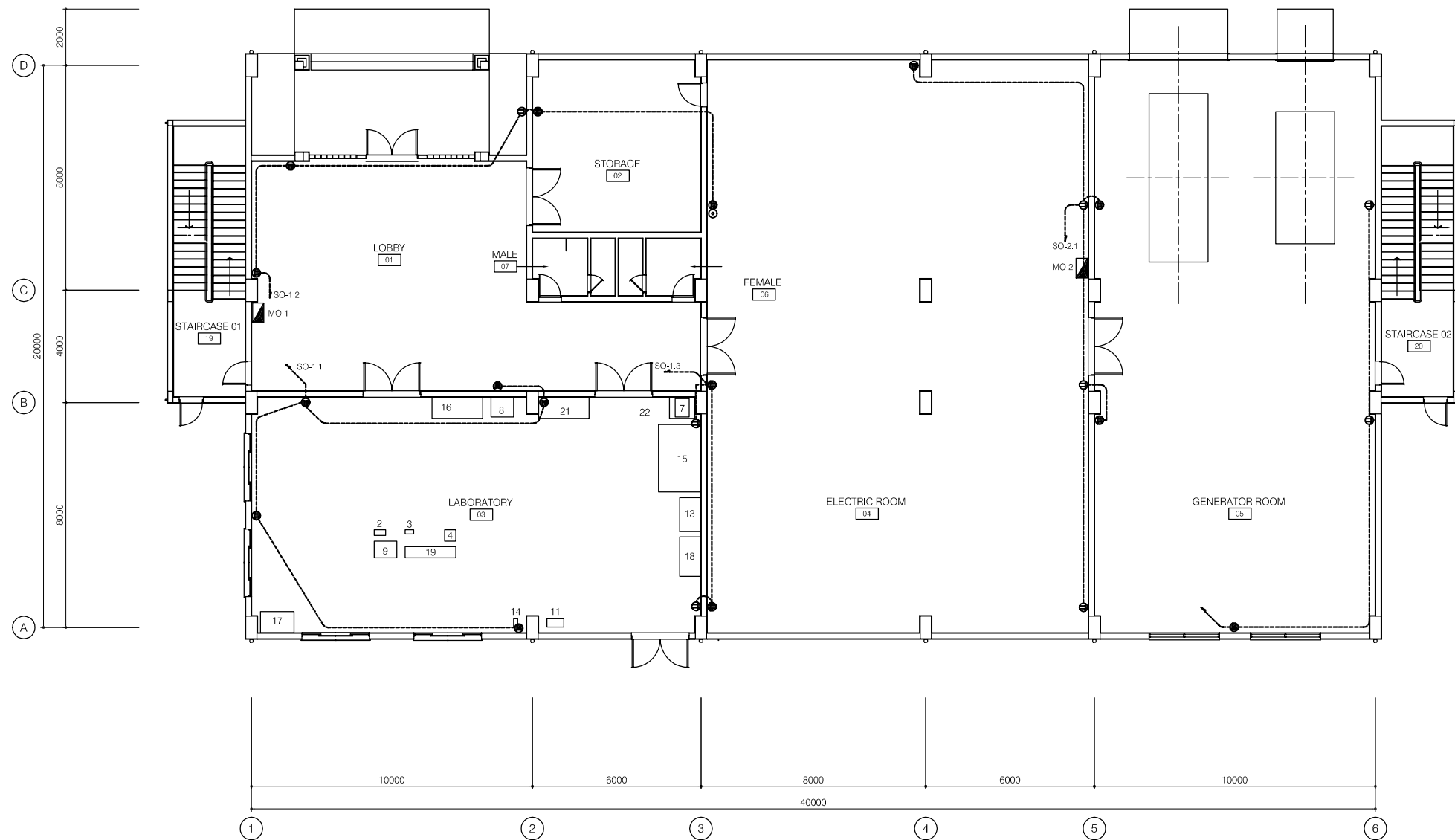
REVISIONS

PROJECT MANAGEMENT UNIT FOR
HO CHI MINH CITY
WATER ENVIRONMENT IMPROVEMENT

THE DETAILED DESIGN STUDY ON HO CHI MINH CITY
WATER ENVIRONMENT IMPROVEMENT PROJECT
IN THE SOCIALIST REPUBLIC OF VIET NAM

PACKAGE E
WASTEWATER TREATMENT PLANT
MAIN OFFICE BUILDING
SECOND FLOOR PLAN
LIGHTING LAYOUT PLAN

SCALE : 1/100	
JAPAN INTERNATIONAL COOPERATION AGENCY (JICA)	
PACIFIC CONSULTANTS INTERNATIONAL	
DESIGNED KIKUTA HIROSHI	CHECKED KONDO MASAMI
DATE : JUNE 2001	DWG. No. PE-WWTP-303-26



FIRST FLOOR - SOCKET PLAN

SCALE:1/100

LEGEND

- ⊕ DUPLEX SOCKET OUTLET 220V-13A
- ⊙ TELEPHONE SOCKET OUTLET
- ▣ DISTRIBUTION BOARD

NO.	DATE	DESCRIPTIONS	BY	APRO.

REVISIONS

PROJECT MANAGEMENT UNIT FOR
HO CHI MINH CITY
WATER ENVIRONMENT IMPROVEMENT

THE DETAILED DESIGN STUDY ON HO CHI MINH CITY
WATER ENVIRONMENT IMPROVEMENT PROJECT
IN THE SOCIALIST REPUBLIC OF VIET NAM

PACKAGE E
WASTEWATER TREATMENT PLANT
MAIN OFFICE BUILDING
FIRST FLOOR PLAN
SOCKET LAYOUT

SCALE : 1/100

JAPAN INTERNATIONAL COOPERATION AGENCY (JICA)

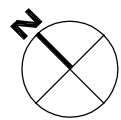
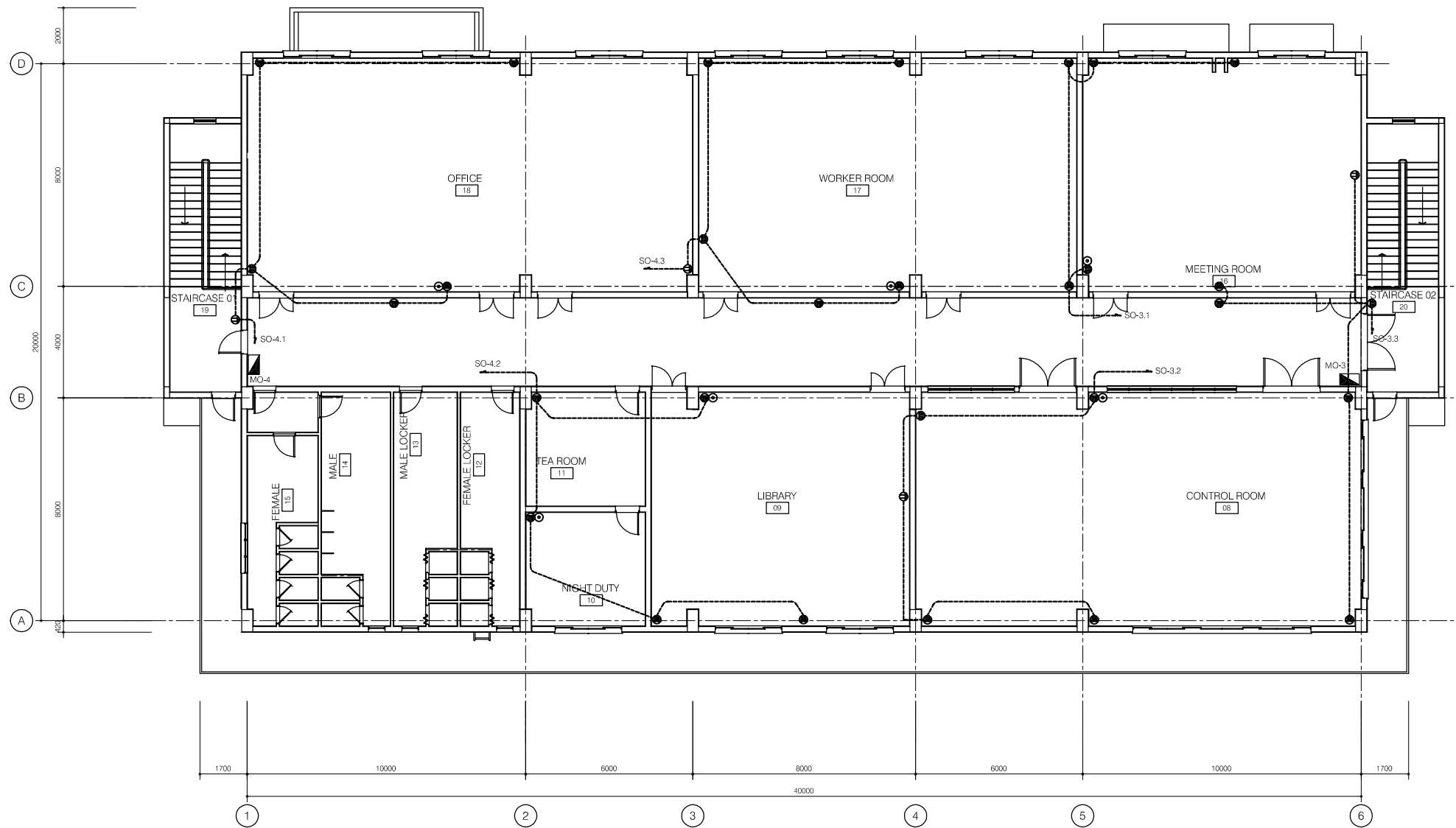
PACIFIC CONSULTANTS INTERNATIONAL

DESIGNED KIKUTA HIROSHI	CHECKED KONDO MASAMI
----------------------------	-------------------------

DATE : JUNE 2001 DWG. No. PE-WWTP-303-27

LEGEND

- ⊕ DUPLEX SOCKET OUTLET 220V-13A
- ⊙ TELEPHONE SOCKET OUTLET
- ▣ DISTRIBUTION BOARD



SECOND FLOOR - SOCKET PLAN

SCALE: 1/100

NO.	DATE	DESCRIPTIONS	BY	APRO.

REVISIONS


PROJECT MANAGEMENT UNIT FOR
HO CHI MINH CITY
WATER ENVIRONMENT IMPROVEMENT

THE DETAILED DESIGN STUDY ON HO CHI MINH CITY
WATER ENVIRONMENT IMPROVEMENT PROJECT
IN THE SOCIALIST REPUBLIC OF VIET NAM

PACKAGE E
WASTEWATER TREATMENT PLANT
MAIN OFFICE BUILDING
SECOND FLOOR PLAN
SOCKET LAYOUT

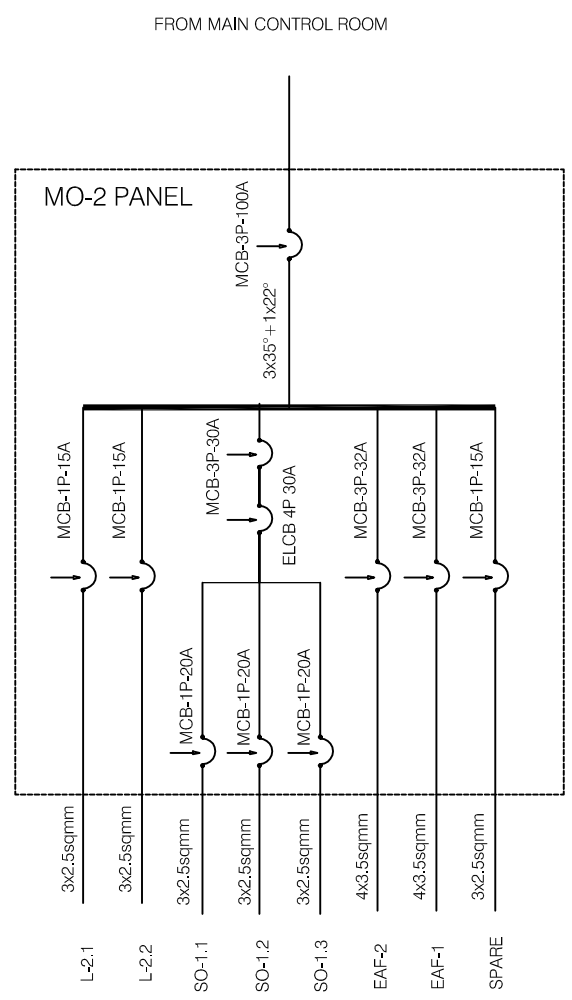
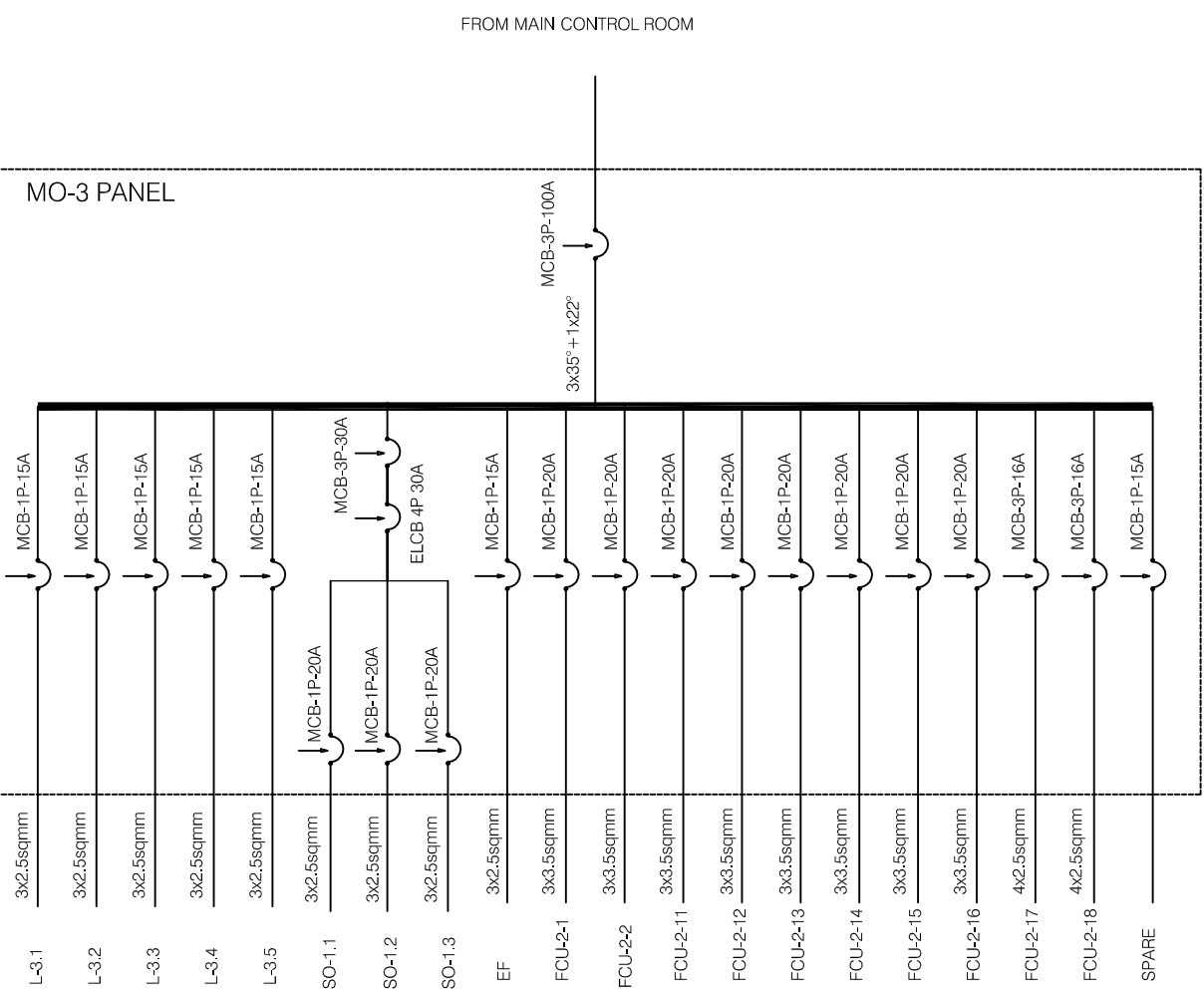
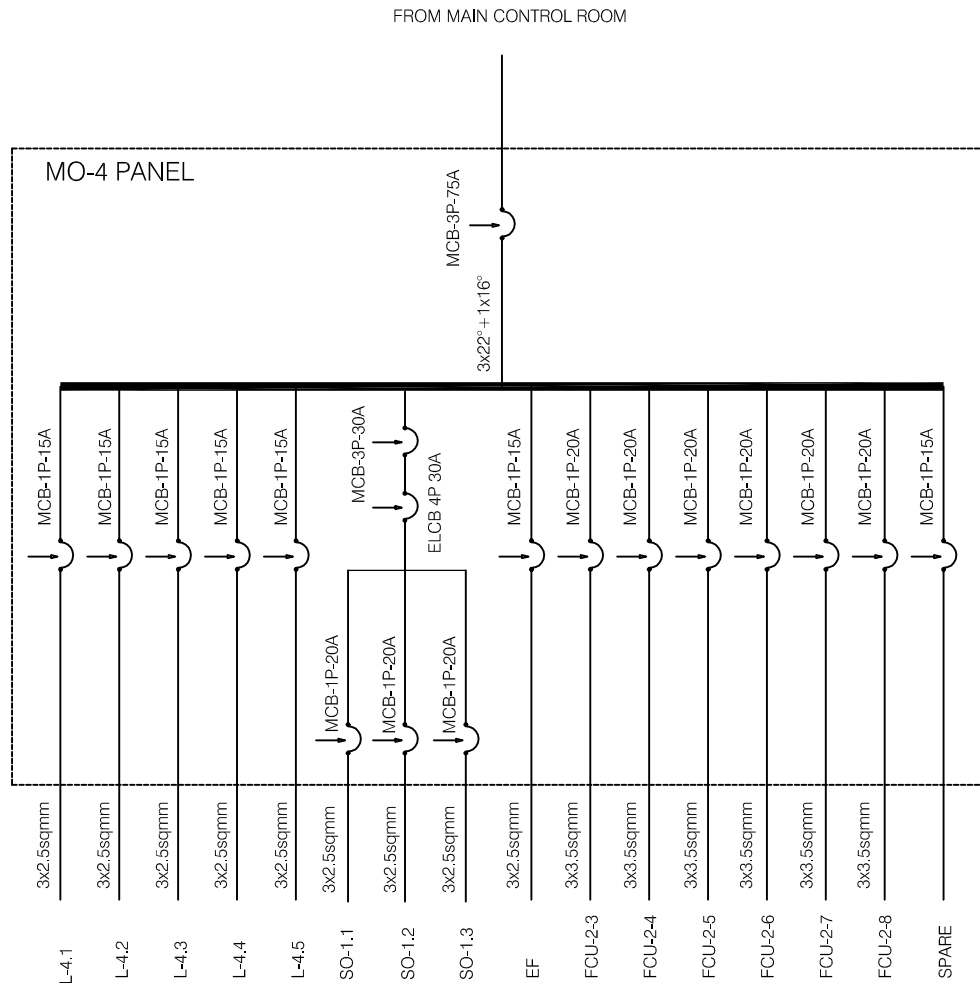
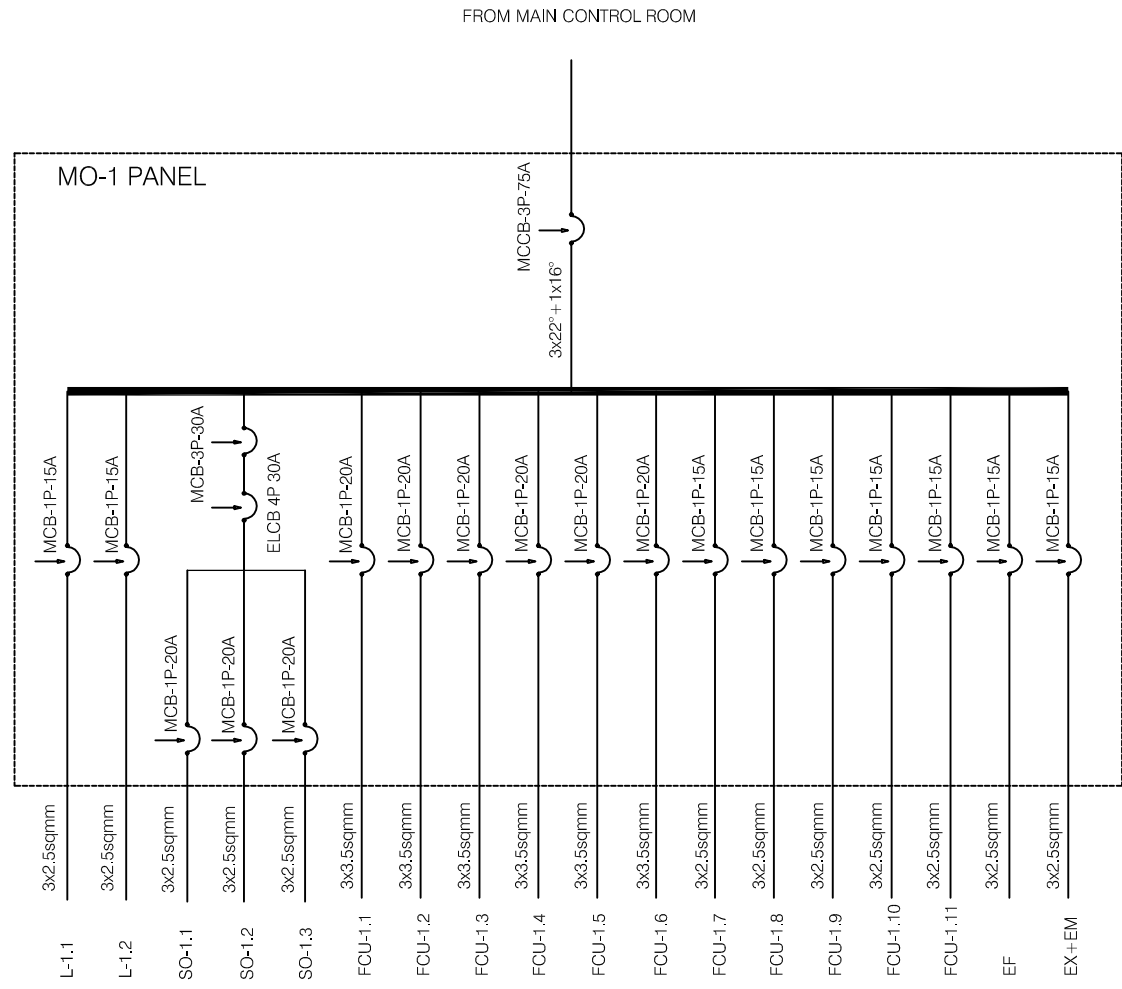
SCALE : 1/100

 JAPAN INTERNATIONAL COOPERATION
AGENCY (JICA)

 PACIFIC CONSULTANTS INTERNATIONAL

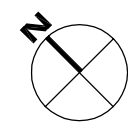
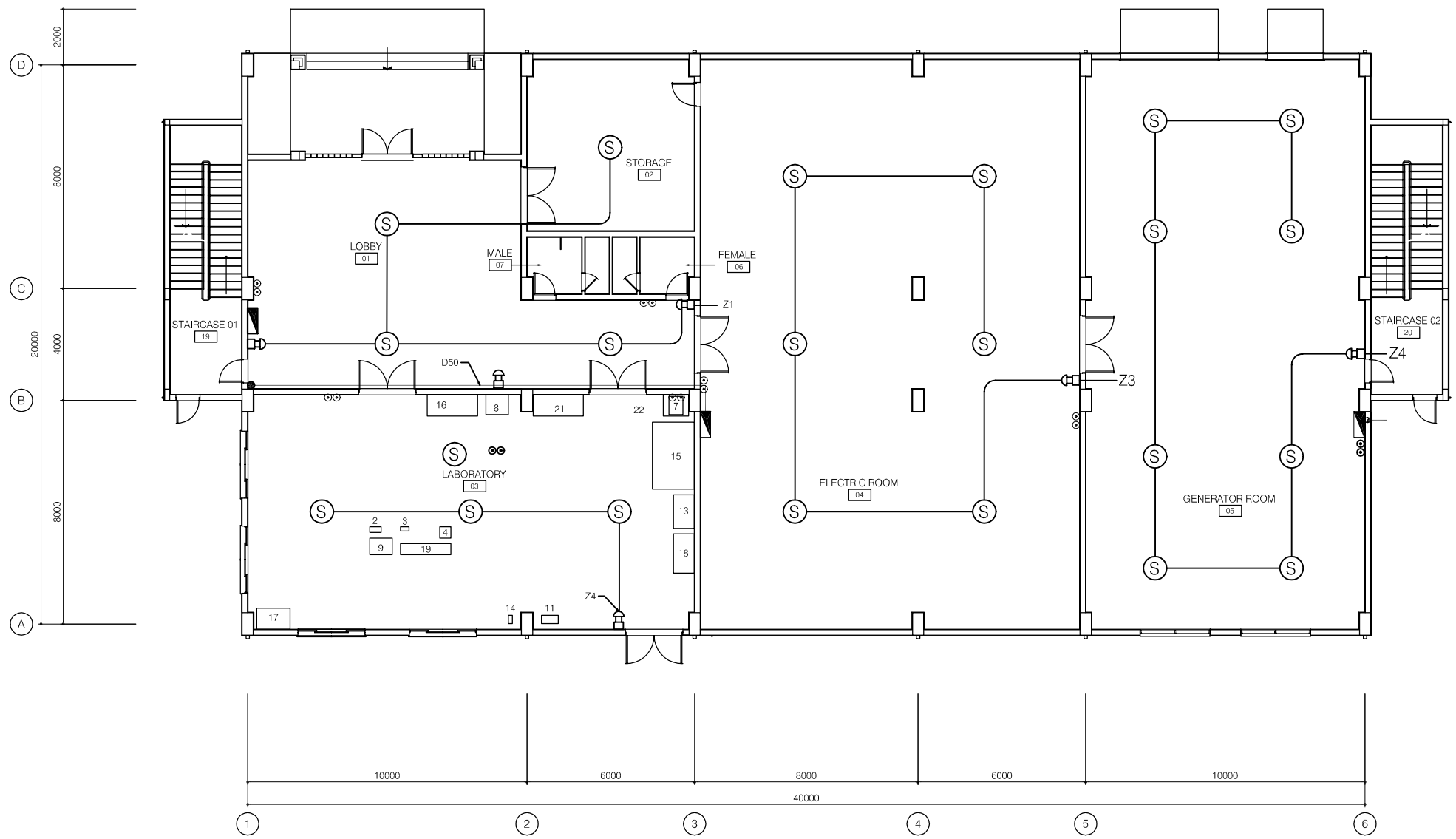
DESIGNED KIKUTA HIROSHI	CHECKED KONDO MASAMI
----------------------------	-------------------------

DATE : JUNE 2001 DWG. No. PE-WWTP-303-28



NO.	DATE	DESCRIPTIONS	BY	APRO.
REVISIONS				
PROJECT MANAGEMENT UNIT FOR HO CHI MINH CITY WATER ENVIRONMENT IMPROVEMENT				
THE DETAILED DESIGN STUDY ON HO CHI MINH CITY WATER ENVIRONMENT IMPROVEMENT PROJECT IN THE SOCIALIST REPUBLIC OF VIET NAM				
PACKAGE E WASTEWATER TREATMENT PLANT MAIN OFFICE BUILDING ELECTRICAL DIAGRAM				
SCALE : 1/100				
JAPAN INTERNATIONAL COOPERATION AGENCY (JICA)				
PACIFIC CONSULTANTS INTERNATIONAL				
DESIGNED KIKUTA HIROSHI		CHECKED KONDO MASAMI		
DATE : JUNE 2001		DWG. No. PE-WWTP-303-29		

-  RX - TX BEAM TYPE
-  EMERGENCY BUTTON
-  FIRE ALARM BELL
-  HOSE REEL BOX
-  ABC FIRE EXTINGUISHER 8KG
-  SIREN
-  SMOKE DETECTOR ION-POINT TYPE



FIRST FLOOR - FIRE ALARM PLAN
SCALE: 1/100

NO.	DATE	DESCRIPTIONS	BY	APPRO.

REVISIONS

PROJECT MANAGEMENT UNIT FOR
HO CHI MINH CITY
WATER ENVIRONMENT IMPROVEMENT

THE DETAILED DESIGN STUDY ON HO CHI MINH CITY
WATER ENVIRONMENT IMPROVEMENT PROJECT
IN THE SOCIALIST REPUBLIC OF VIET NAM

PACKAGE E
WASTEWATER TREATMENT PLANT
MAIN OFFICE BUILDING
FIRST FLOOR PLAN
FIRE ALARM PLAN

SCALE : 1/100

 JAPAN INTERNATIONAL COOPERATION AGENCY (JICA)

 PACIFIC CONSULTANTS INTERNATIONAL

DESIGNED KIKUTA HIROSHI	CHECKED KONDO MASAMI
----------------------------	-------------------------

DATE : JUNE 2001 DWG. No. PE-WWTP-303-30