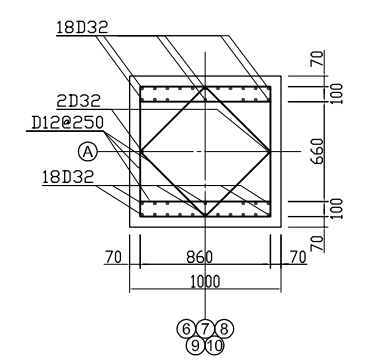
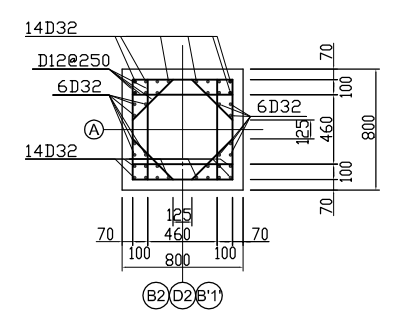


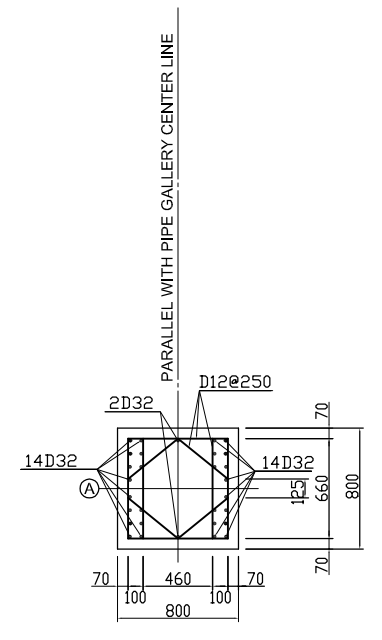
SECTION S4-S4 Scale: 1/50



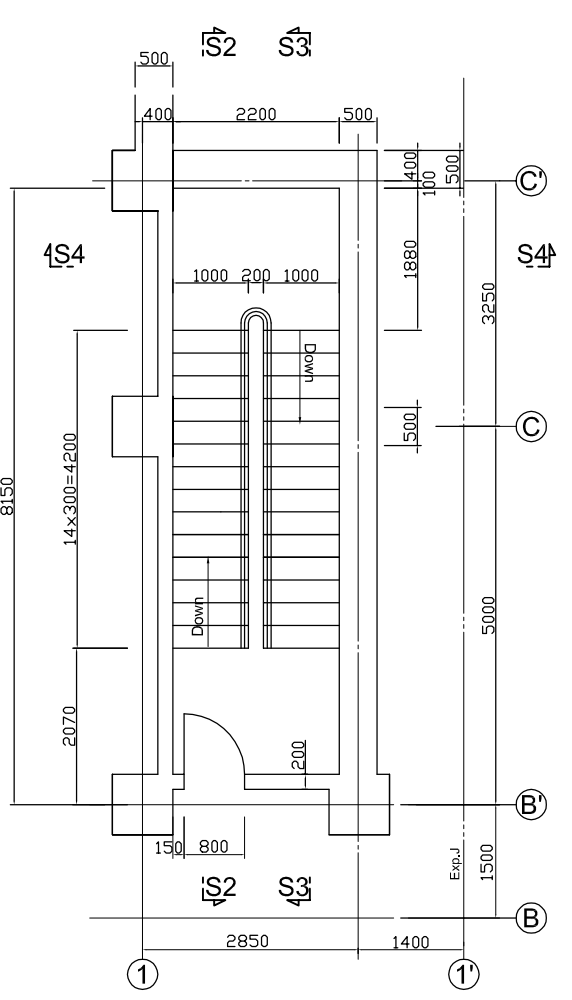
COLUMN A6, A7, A8, A9, A10 Scale: 1/25



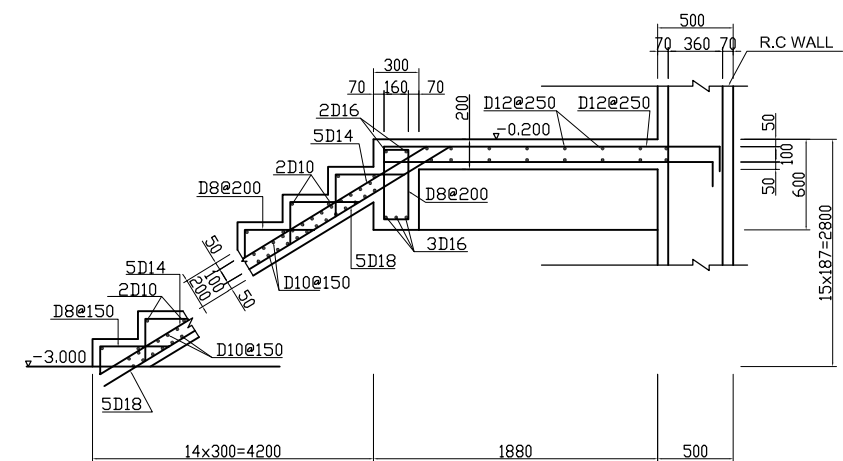
COLUMN B2, D2, E2, B'1' Scale: 1/25



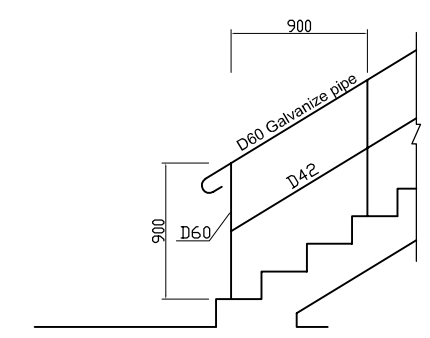
OTHER COLUMNS Scale: 1/25



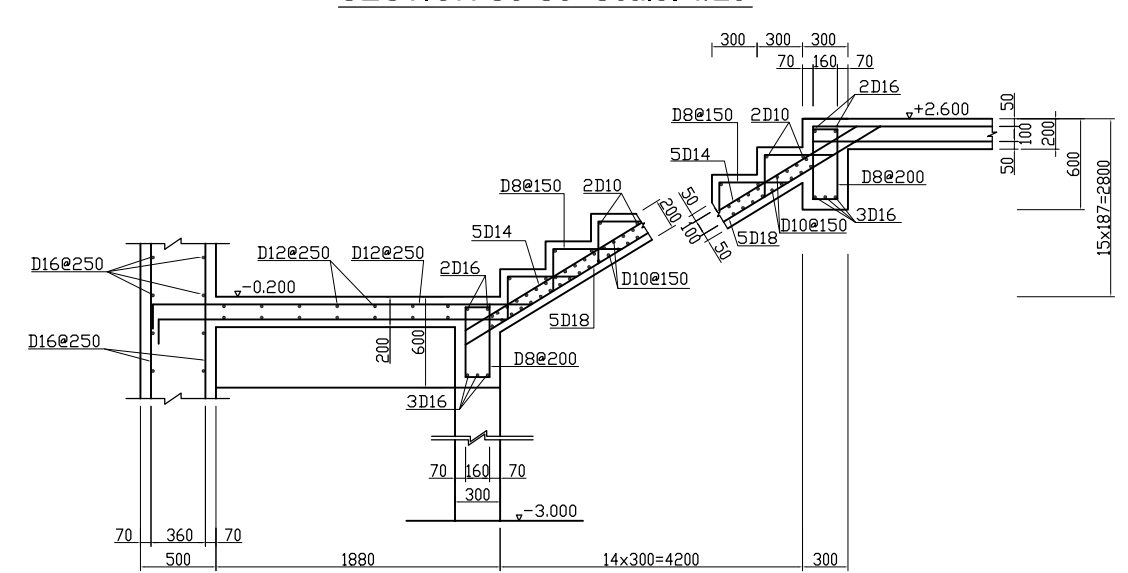
STAIR S1 Scale: 1/50



SECTION S3-S3 Scale: 1/25

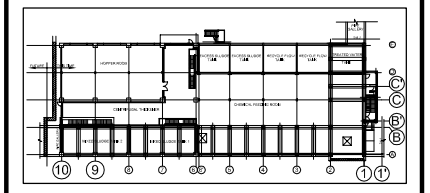


HANDRAIL Scale: 1/25



SECTION S2-S2 Scale: 1/25

KEY PLAN



NOTES :

- ALL DIMENSIONS ARE MM UNLESS STATED OTHERWISE
- CONCRETE E21
- LEVELLING CONCRETE G10
- ALL REINFORCEMENT BARS ARE DEFORMED TYPE (CT5 OR EQUIVALENT AS INDICATED IN SPECIFICATION OF PACKAGE E)
- THE SPECIFICATION TO BE REFERRED FOR MORE INFORMATION OF MATERIAL GRADES

NO.	DATE	DESCRIPTIONS	BY	APRO.

REVISIONS

PROJECT MANAGEMENT UNIT FOR
HO CHI MINH CITY
WATER ENVIRONMENT IMPROVEMENT

THE DETAILED DESIGN ON HO CHI MINH CITY
WATER ENVIRONMENT IMPROVEMENT PROJECT
IN THE SOCIALIST REPUBLIC OF VIET NAM

PACKAGE E
WASTE WATER TREATMENT PLANT
DEWATERING AND CENTRIFUGAL
THICKENER BUILDING
BAR ARRANGEMENT DRAWING
(STAIR 2)

SCALE: 1 / 50

JICA JAPAN INTERNATIONAL COOPERATION AGENCY (JICA)

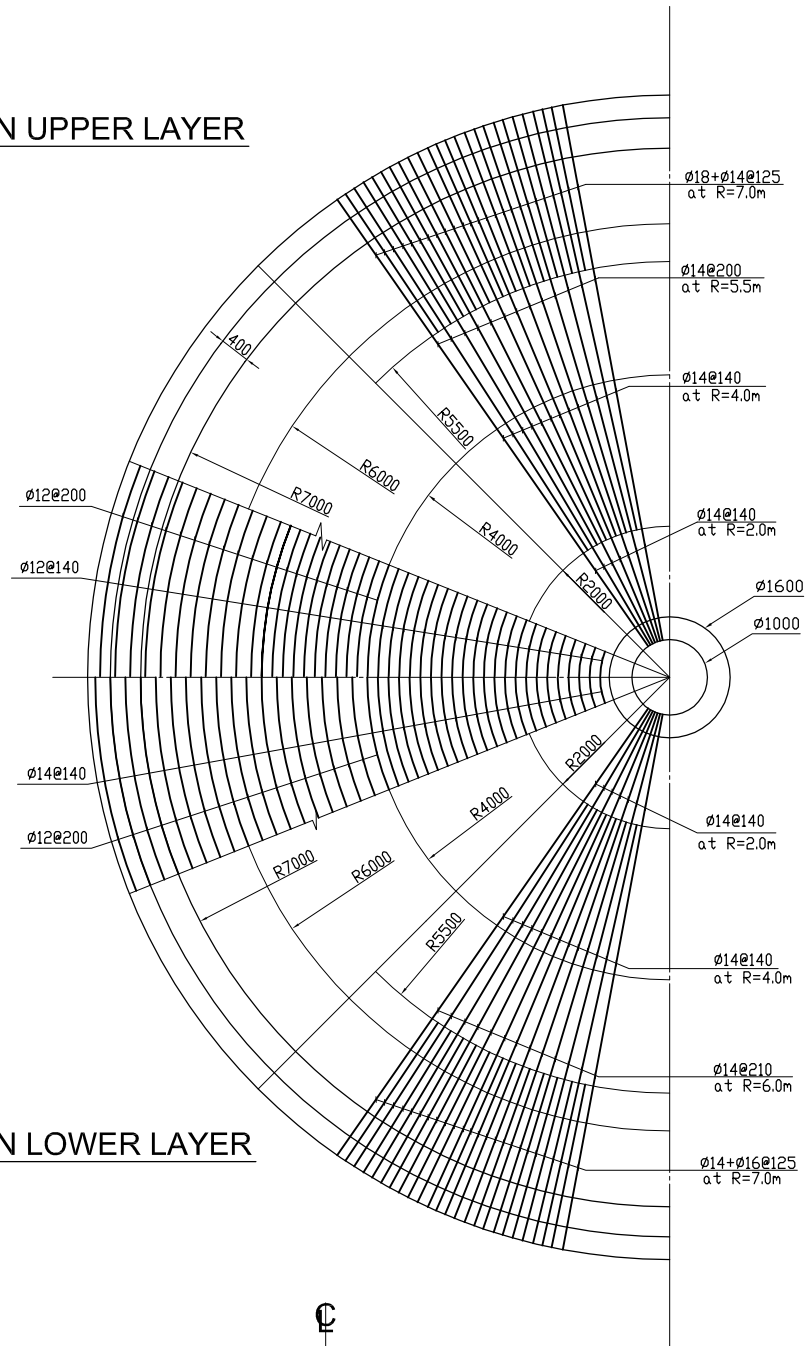
PACIFIC CONSULTANTS INTERNATIONAL

DESIGNED KIMURA TORU	CHECKED KONDO MASAMI
-------------------------	-------------------------

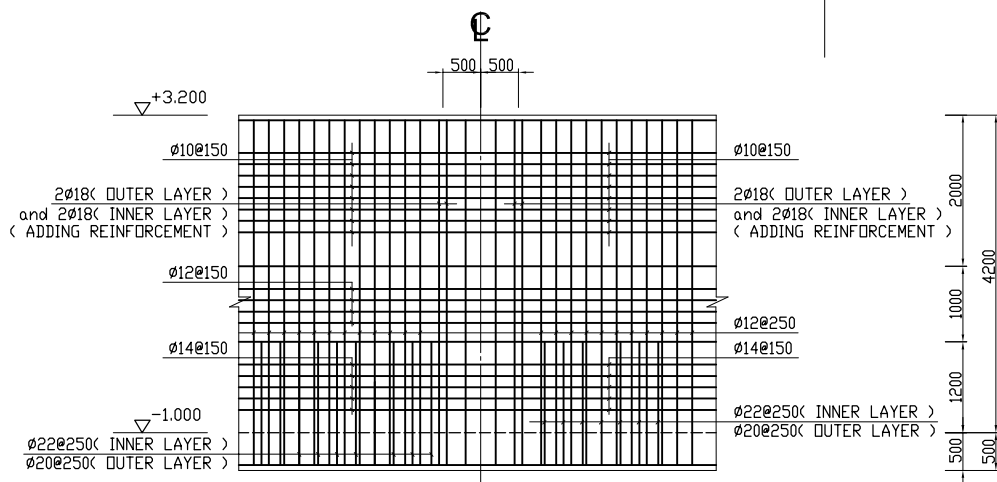
DATE : JUNE 2001 DWG. No. PE - WWTP - 275 - 10

GRAVITY THICKENER BUILDING BAR ARRANGEMENT DRAWING No.1 Scale: 1/50

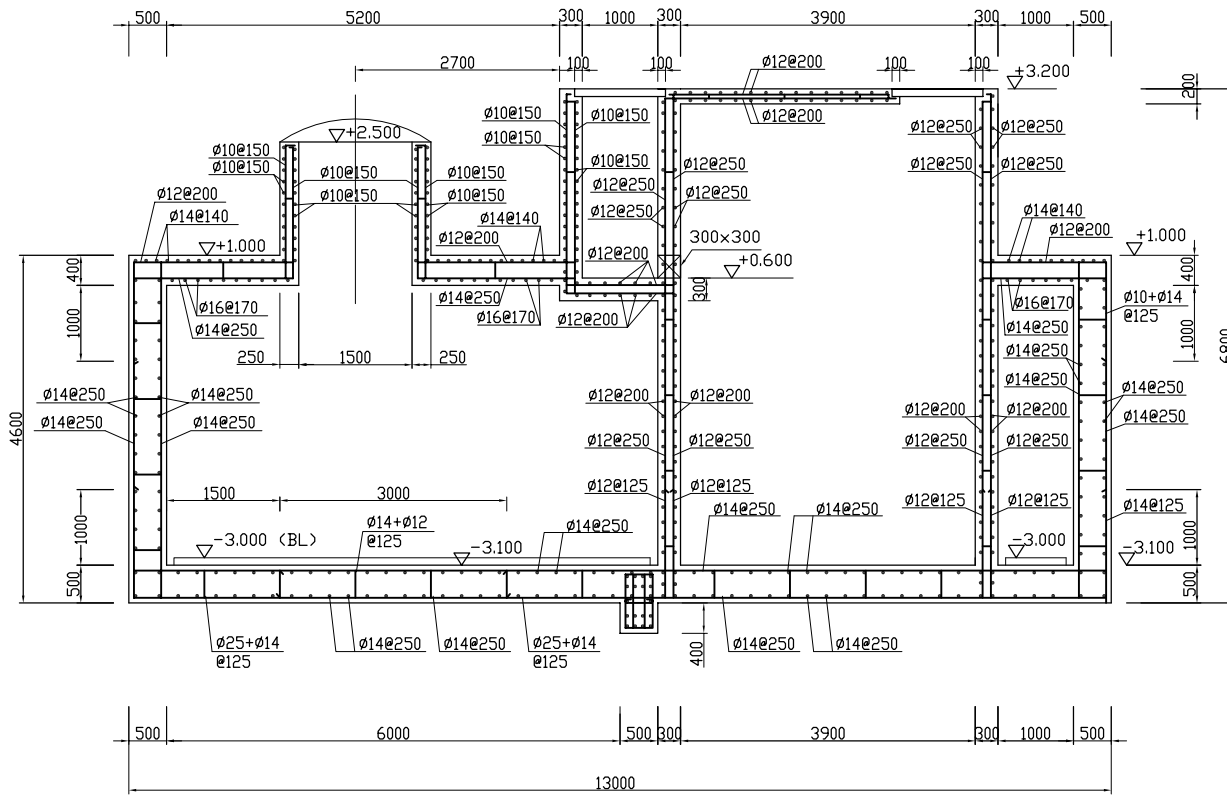
1/4 PLAN UPPER LAYER



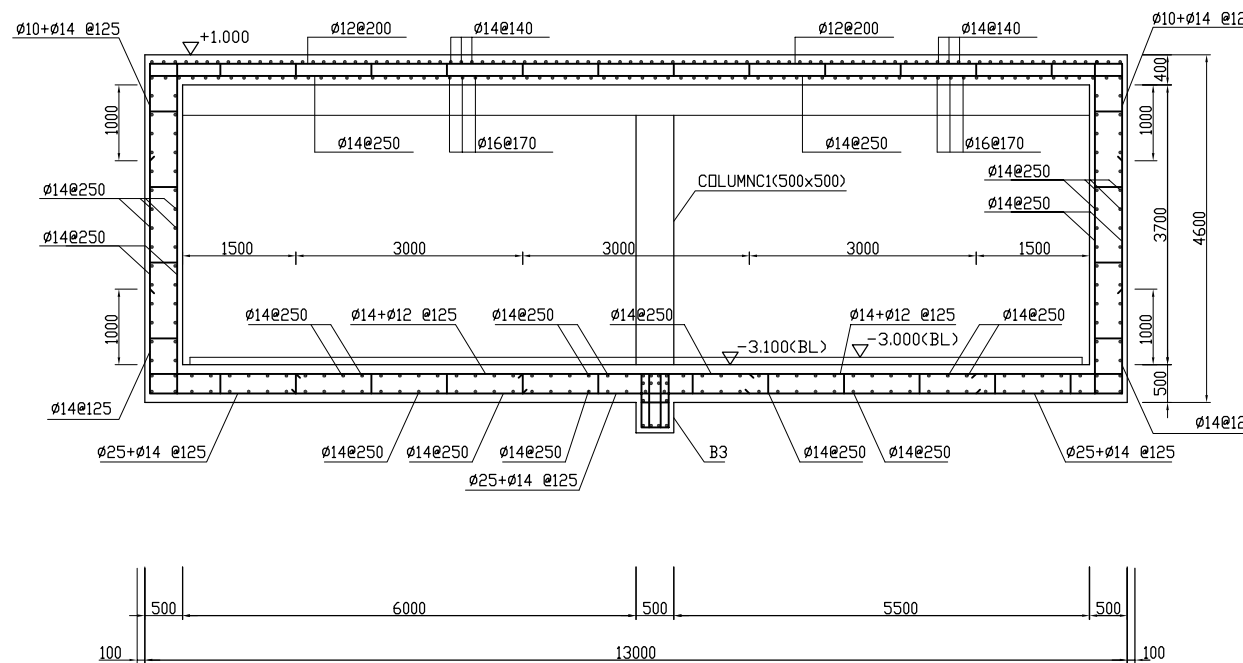
1/4 PLAN LOWER LAYER



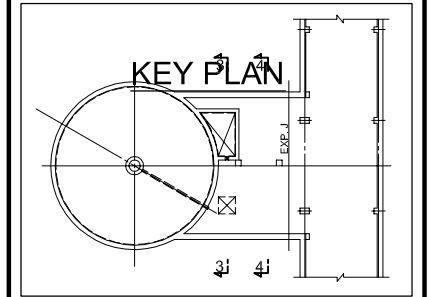
WALL REINFORCEMENT AND ADDING REINFORCEMENT AT SUPPORT OF MAINTENANCE BRIDGE



SECTION 3-3 Scale: 1 / 50



SECTION 4-4 Scale: 1 / 50



NOTES :

- ALL DIMENSIONS ARE MM UNLESS STATED OTHERWISE
- CONCRETE E21
- LEVELLING CONCRETE G10
- ALL REINFORCEMENT BARS ARE DEFORMED TYPE (CT5 OR EQUIVALENT AS INDICATED IN SPECIFICATION OF PACKAGE E)
- THE SPECIFICATION TO BE REFERRED FOR MORE INFORMATION OF MATERIAL GRADES

NO.	DATE	DESCRIPTIONS	BY	APPRO.

REVISIONS

PROJECT MANAGEMENT UNIT FOR
HO CHI MINH CITY
WATER ENVIRONMENT IMPROVEMENT

THE DETAILED DESIGN ON HO CHI MINH CITY
WATER ENVIRONMENT IMPROVEMENT PROJECT
IN THE SOCIALIST REPUBLIC OF VIET NAM

PACKAGE E
WASTE WATER TREATMENT PLANT

GRAVITY THICKENER BUILDING
BAR ARRANGEMENT DRAWING (No.1)

SCALE: 1 / 50

JICA JAPAN INTERNATIONAL COOPERATION
AGENCY (JICA)

PACIFIC CONSULTANTS INTERNATIONAL

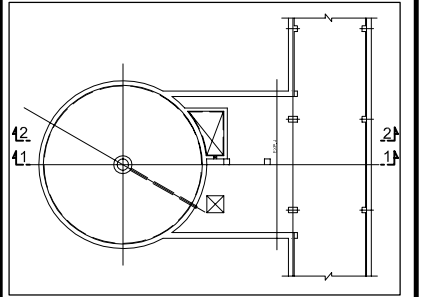
DESIGNED
KIMURA TORU

CHECKED
KONDO MASAMI

DATE : JUNE 2001 DWG. No. PE - WWTP - 276 - 01

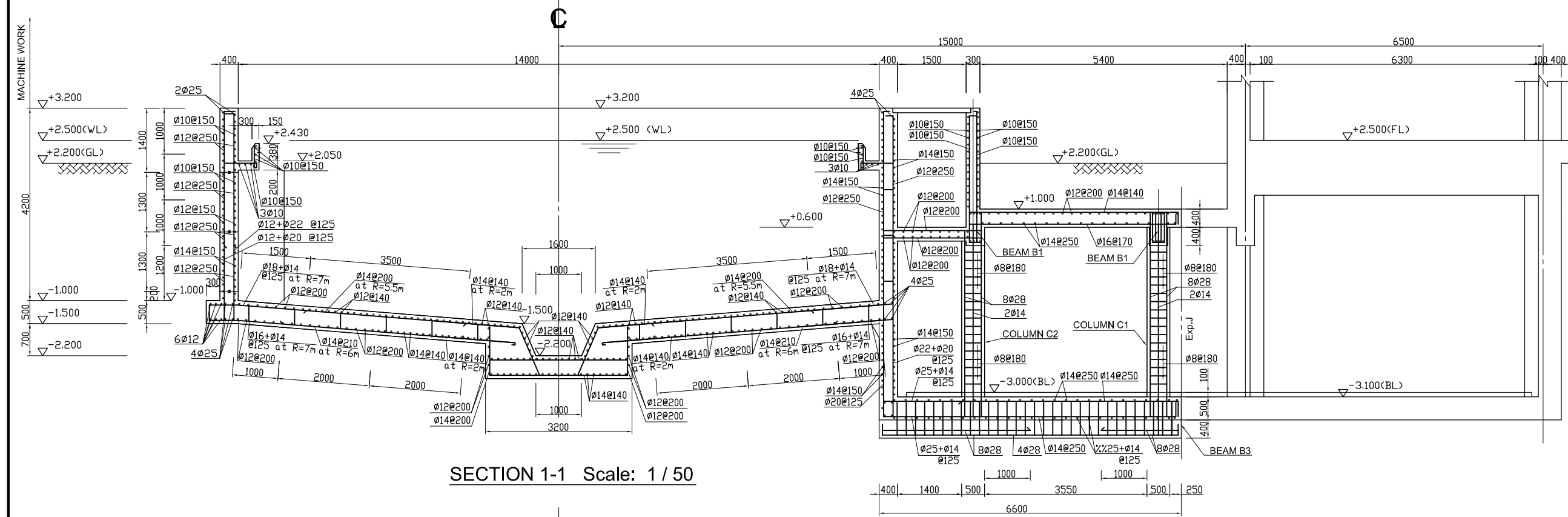
GRAVITY THICKENER BUILDING BAR ARRANGEMENT DRAWING No.2 Scale: 1/50

KEY PLAN

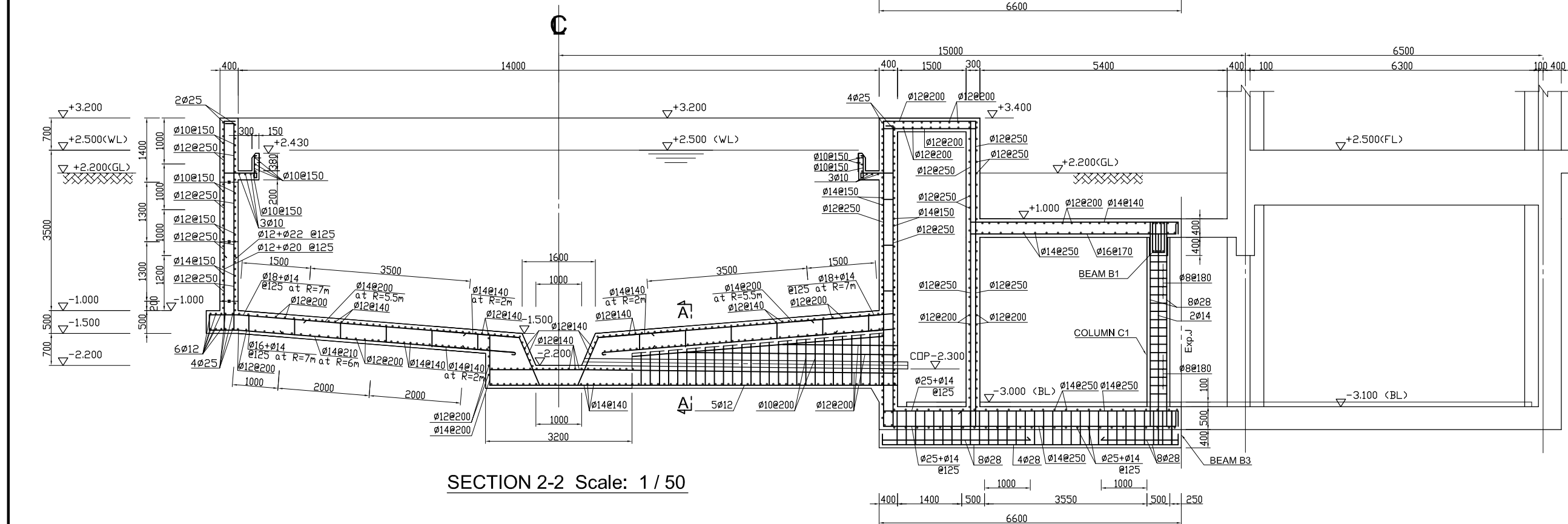


NOTES :

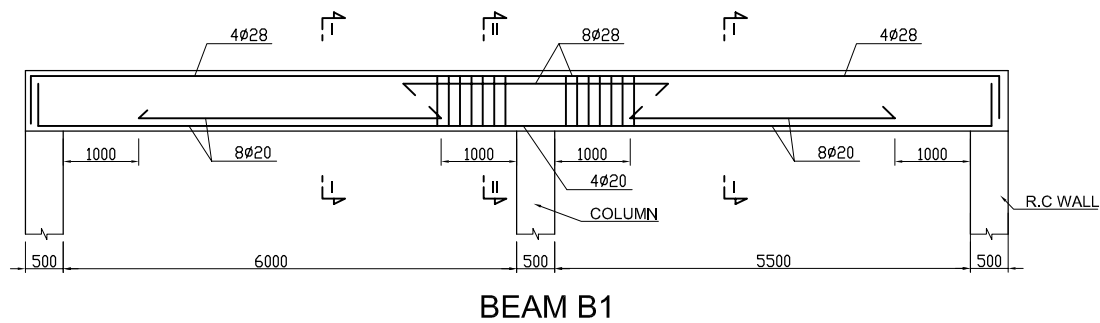
- ALL DIMENSIONS ARE MM UNLESS STATED OTHERWISE
- CONCRETE E21
- LEVELLING CONCRETE G10
- ALL REINFORCEMENT BARS ARE DEFORMED TYPE (CT5 OR EQUIVALENT AS INDICATED IN SPECIFICATION OF PACKAGE E)
- THE SPECIFICATION TO BE REFERRED FOR MORE INFORMATION OF MATERIAL GRADES



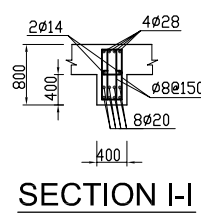
SECTION 1-1 Scale: 1 / 50



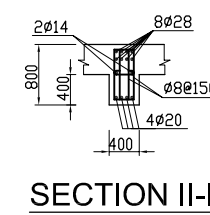
SECTION 2-2 Scale: 1 / 50



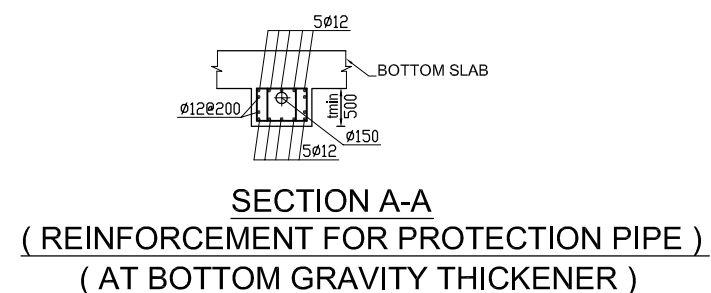
BEAM B1



SECTION I-I



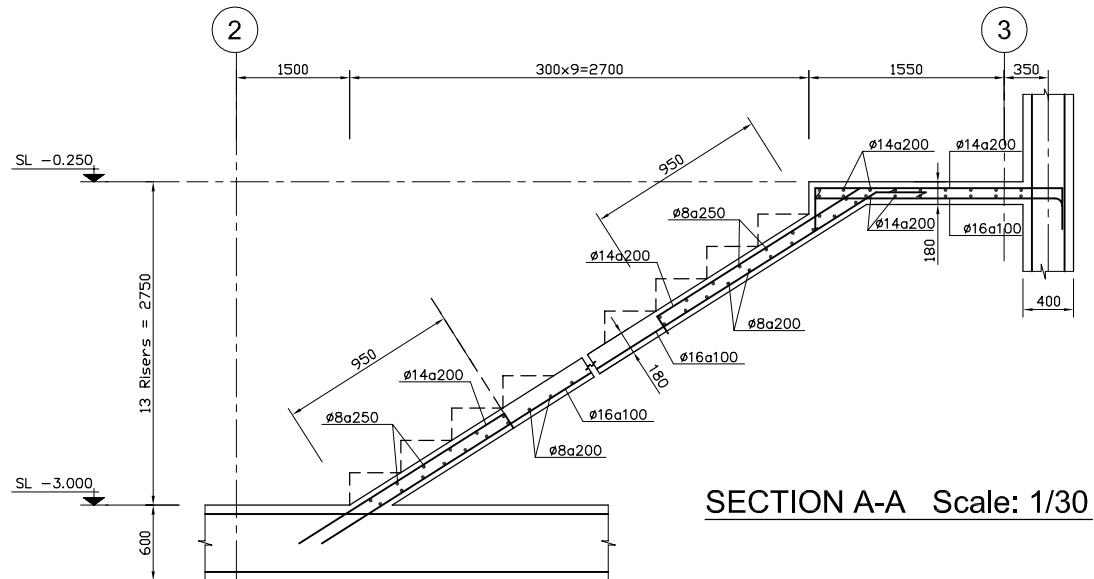
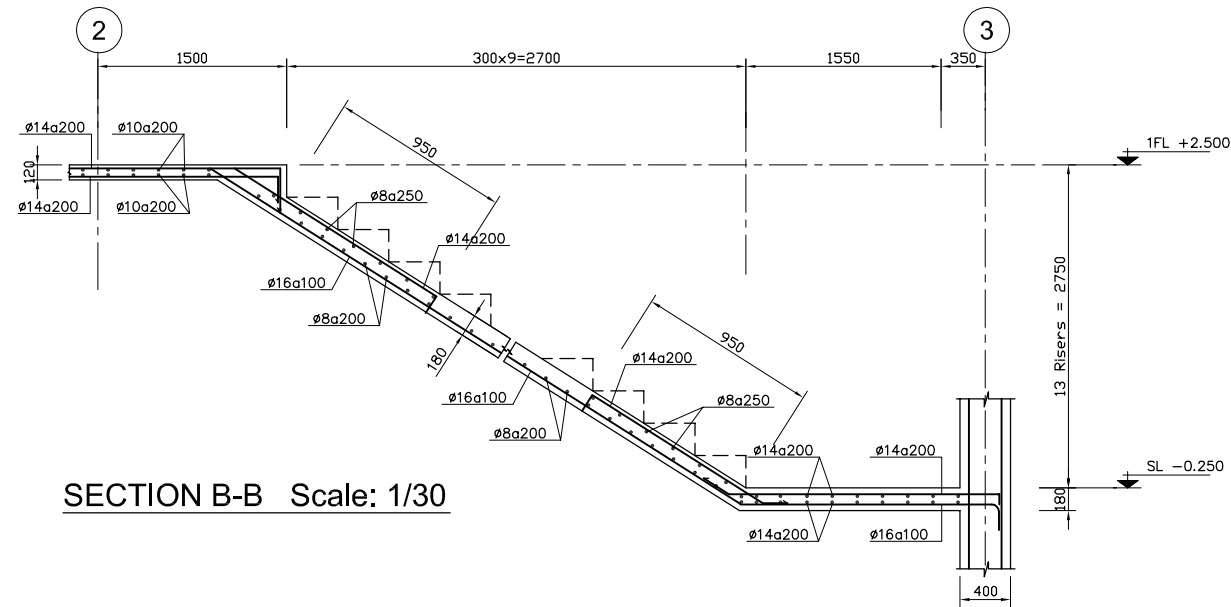
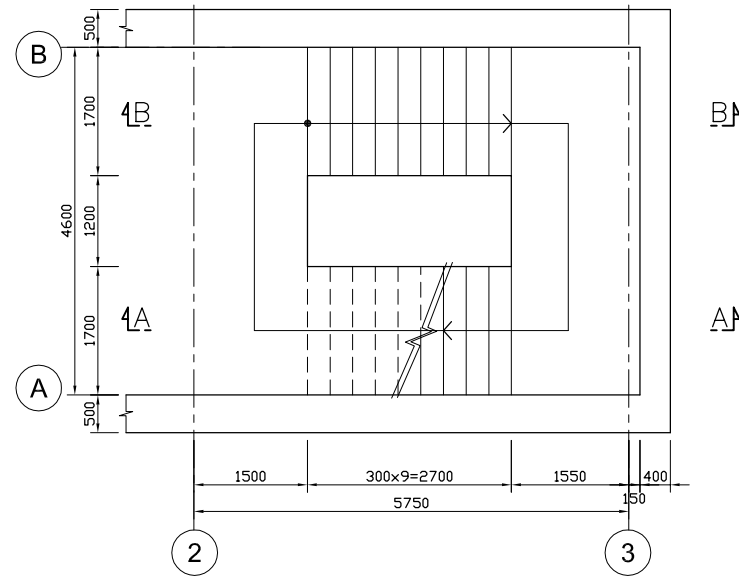
SECTION II-II



SECTION A-A
(REINFORCEMENT FOR PROTECTION PIPE)
(AT BOTTOM GRAVITY THICKENER)

NO.	DATE	DESCRIPTIONS	BY	APRO.
REVISIONS				
PROJECT MANAGEMENT UNIT FOR HO CHI MINH CITY WATER ENVIRONMENT IMPROVEMENT				
THE DETAILED DESIGN ON HO CHI MINH CITY WATER ENVIRONMENT IMPROVEMENT PROJECT IN THE SOCIALIST REPUBLIC OF VIET NAM				
PACKAGE E WASTE WATER TREATMENT PLANT				
GRAVITY THICKENER BUILDING BAR ARRANGMENT DRAWING (No.2)				
SCALE: 1 / 50				
JAPAN INTERNATIONAL COOPERATION AGENCY (JICA)		PACIFIC CONSULTANTS INTERNATIONAL		
DESIGNED KIMURA TORU	CHECKED KONDO MASAMI			
DATE: JUNE 2001	DWG. No. PE - WWTP - 276 - 02			

PLAN OF 1st FLOOR STAIRCASE Scale: 1/50



NOTES :

- ALL DIMENSIONS ARE MM UNLESS STATED OTHERWISE
- CONCRETE E21
- LEVELLING CONCRETE G10
- ALL REINFORCEMENT BARS ARE DEFORMED TYPE (CT5 OR EQUIVALENT AS INDICATED IN SPECIFICATION OF PACKAGE E)
- THE SPECIFICATION TO BE REFERRED FOR MORE INFORMATION OF MATERIAL GRADES

NO.	DATE	DESCRIPTIONS	BY	APRO.

REVISIONS

PROJECT MANAGEMENT UNIT FOR
HO CHI MINH CITY
WATER ENVIRONMENT IMPROVEMENT

THE DETAILED DESIGN STUDY ON HO CHI MINH CITY
WATER ENVIRONMENT IMPROVEMENT PROJECT
IN THE SOCIALIST REPUBLIC OF VIET NAM

PACKAGE E
WASTEWATER TREATMENT PLANT

STAIRCASE A & B
BAR ARRANGEMENT DRAWING

SCALE: 1/30, 1/50

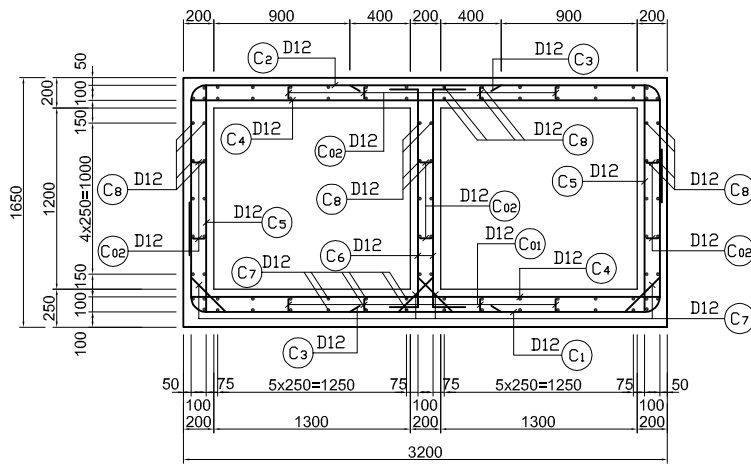
JICA JAPAN INTERNATIONAL COOPERATION
AGENCY (JICA)

PACIFIC CONSULTANTS INTERNATIONAL

DESIGNED KIMURA TORU	CHECKED KONDO MASAMI
-------------------------	-------------------------

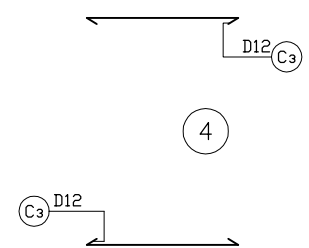
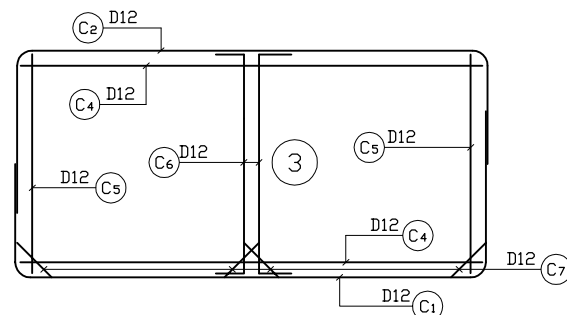
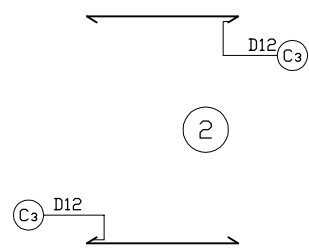
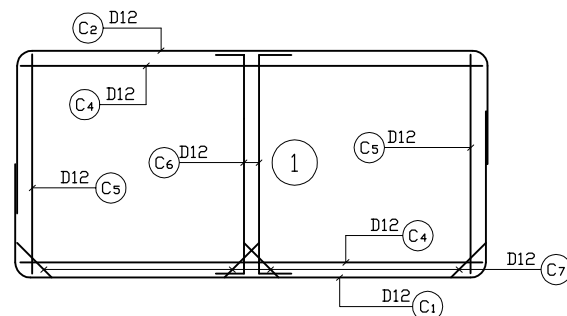
DATE : JUNE 2001 DWG. No. PE - WWTP - 277 - 01

SECTION OF CONVEYANCE SEWER TYPE 1

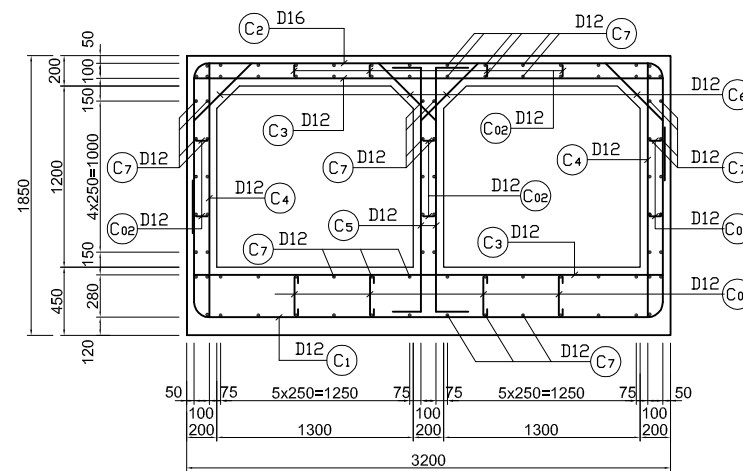


BAR SKELETON

@125

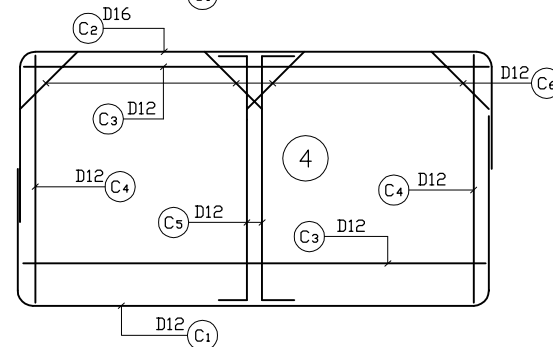
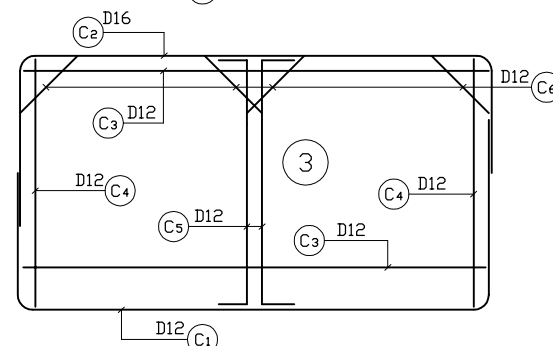
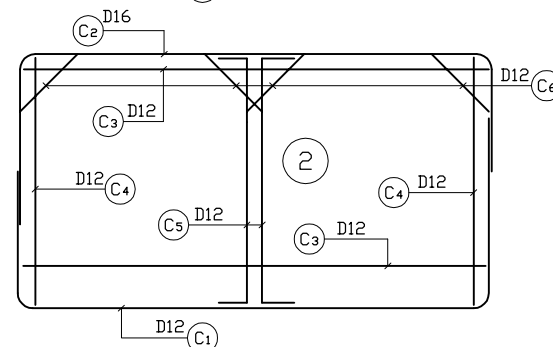
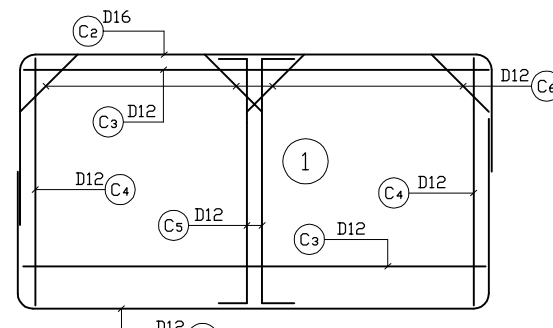


SECTION OF CONVEYANCE SEWER TYPE 2

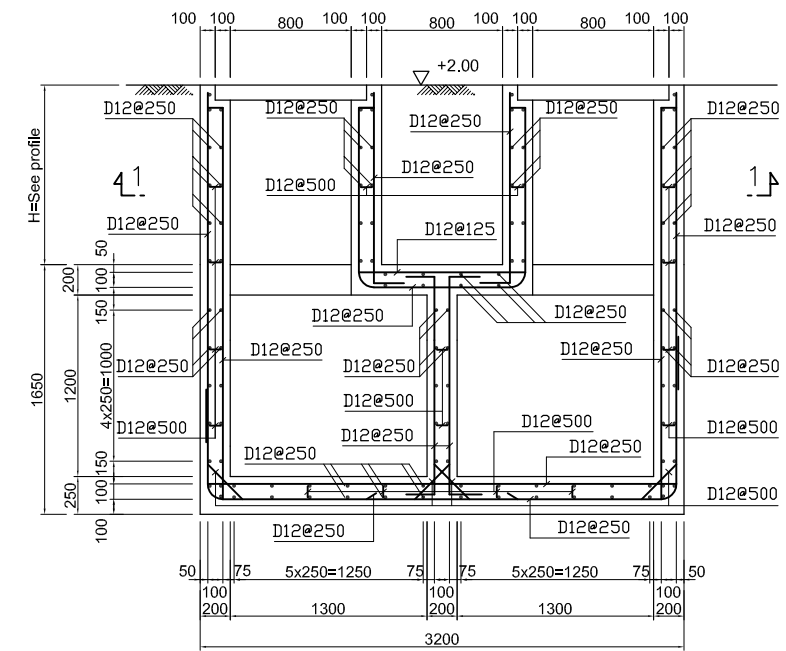


BAR SKELETON

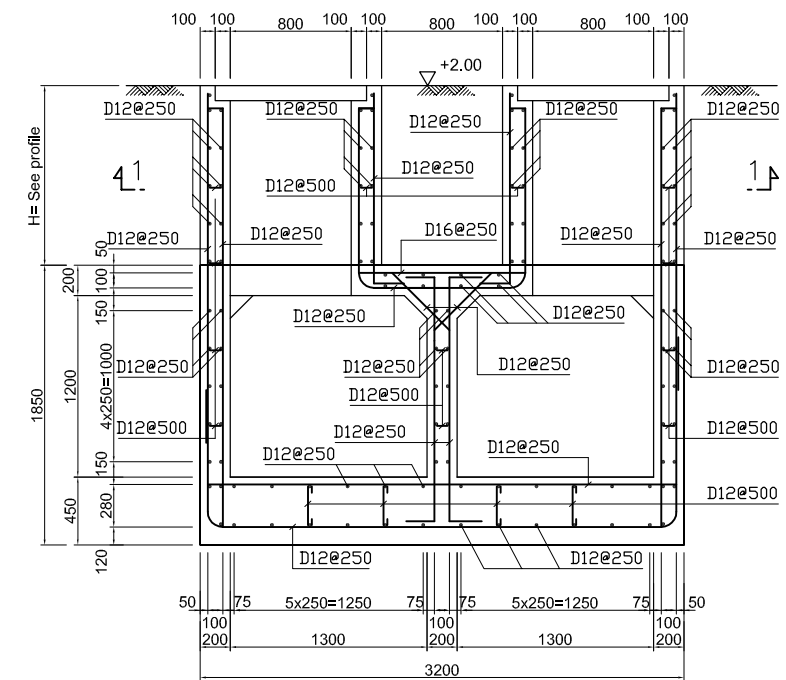
@250



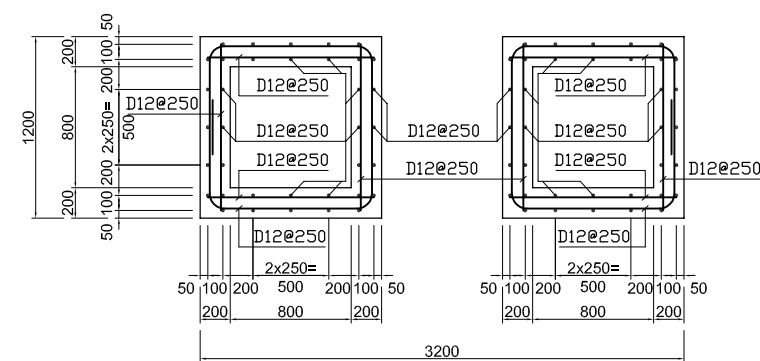
MANHOLE SECTION OF CONVEYANCE SEWER TYPE 1



MANHOLE SECTION OF CONVEYANCE SEWER TYPE 2



SECTION 1-1

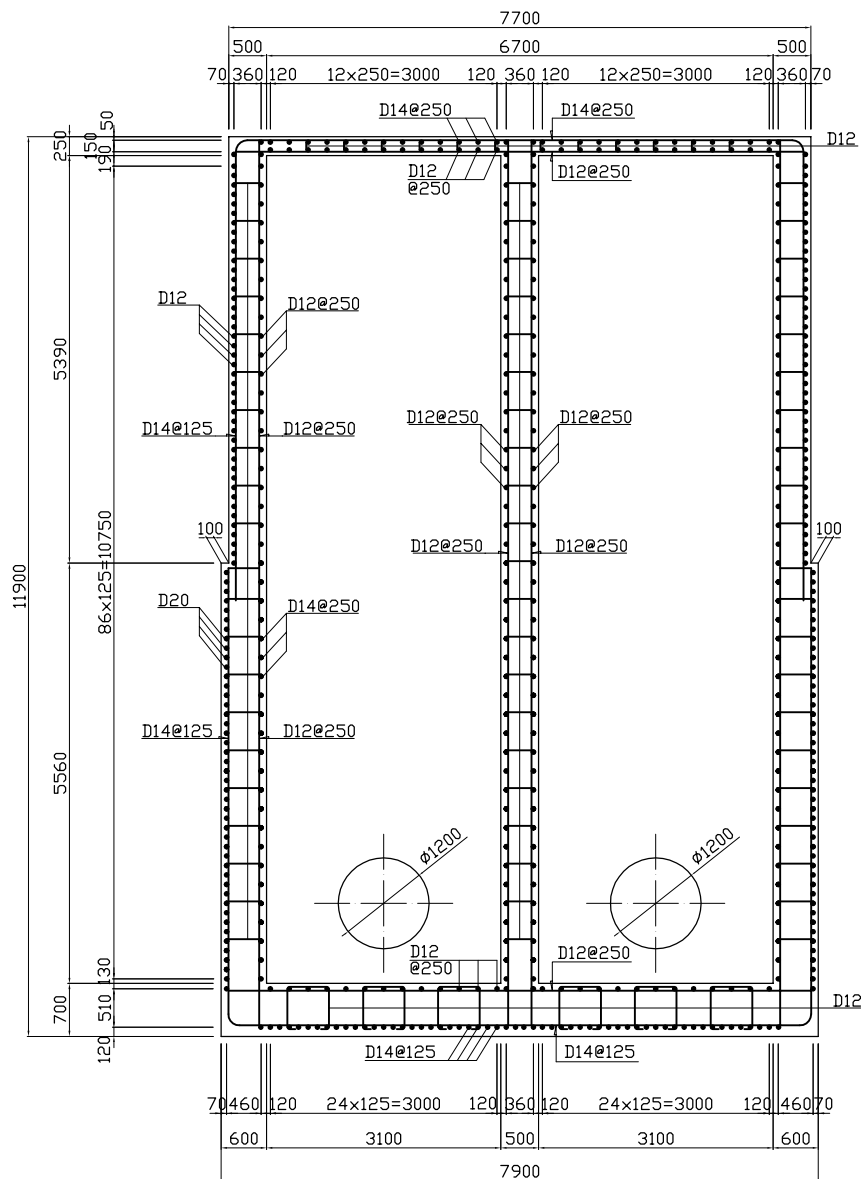


NOTES :

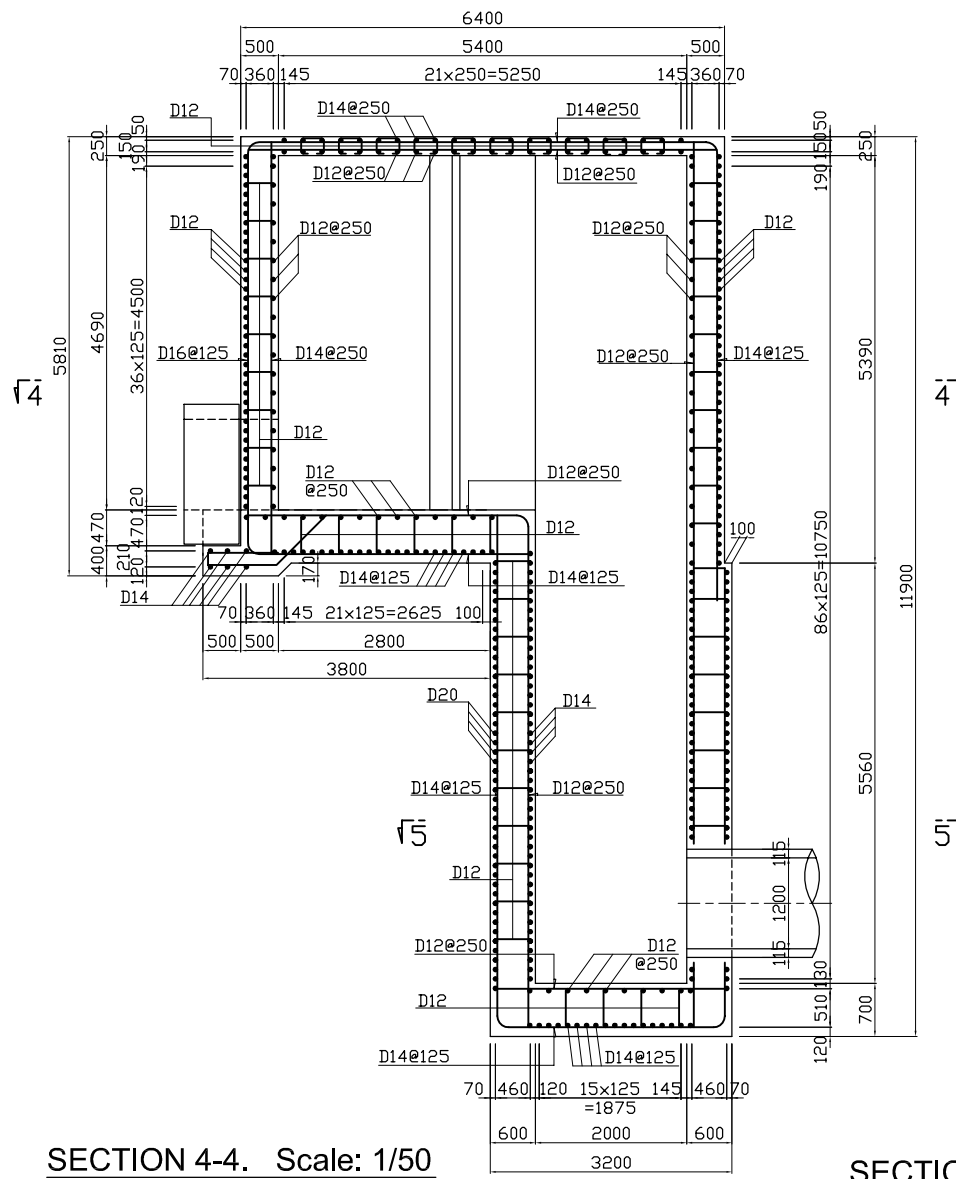
- ALL DIMENSIONS ARE MM UNLESS STATED OTHERWISE
- CONCRETE E21
- LEVELLING CONCRETE G10
- ALL REINFORCEMENT BARS ARE DEFORMED TYPE (CT5 OR EQUIVALENT AS INDICATED IN SPECIFICATION OF PACKAGE E)
- THE SPECIFICATION TO BE REFERRED FOR MORE INFORMATION OF MATERIAL GRADES

NO.	DATE	DESCRIPTIONS	BY	APRO.
REVISIONS				
PROJECT MANAGEMENT UNIT FOR HO CHI MINH CITY WATER ENVIRONMENT IMPROVEMENT				
THE DETAILED DESIGN STUDY ON HO CHI MINH CITY WATER ENVIRONMENT IMPROVEMENT PROJECT IN THE SOCIALIST REPUBLIC OF VIET NAM				
PACKAGE E CONVEYANCE SEWER CONSTRUCTION				
BAR ARRANGEMENT OF CONVEYANCE SEWER AND MANHOLE				
SCALE : 1 / 25				
JICA JAPAN INTERNATIONAL COOPERATION AGENCY (JICA)				
PACIFIC CONSULTANTS INTERNATIONAL				
DESIGNED KIMURA TORU		CHECKED KONDO MASAMI		
DATE : JUNE 2001		DWG. No. PE - WWTP - 278 - 01		

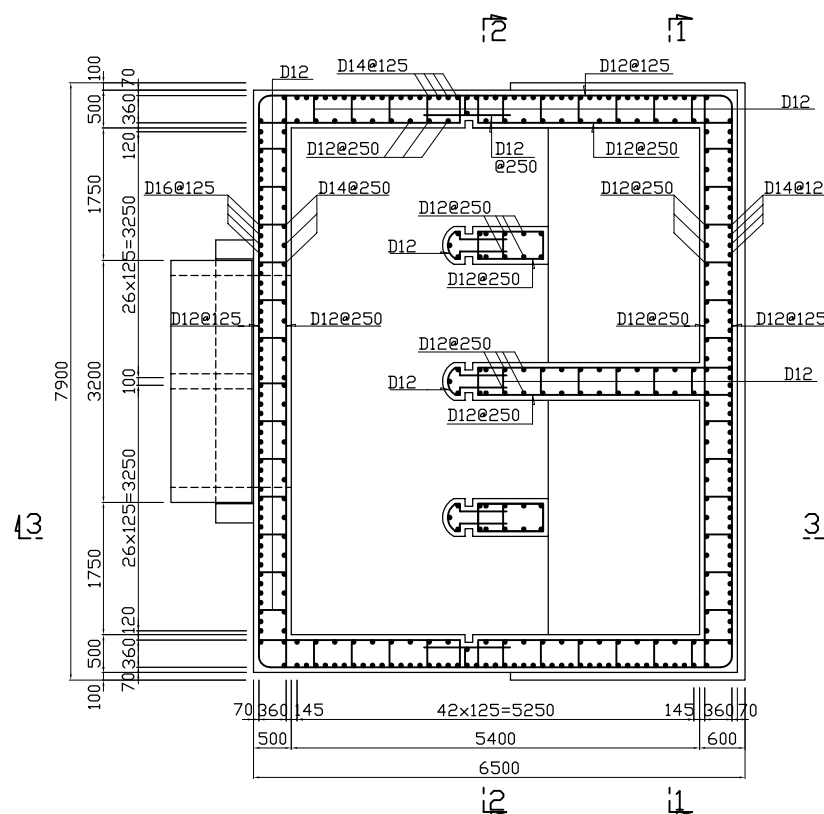
SECTION 1-1. Scale: 1/50



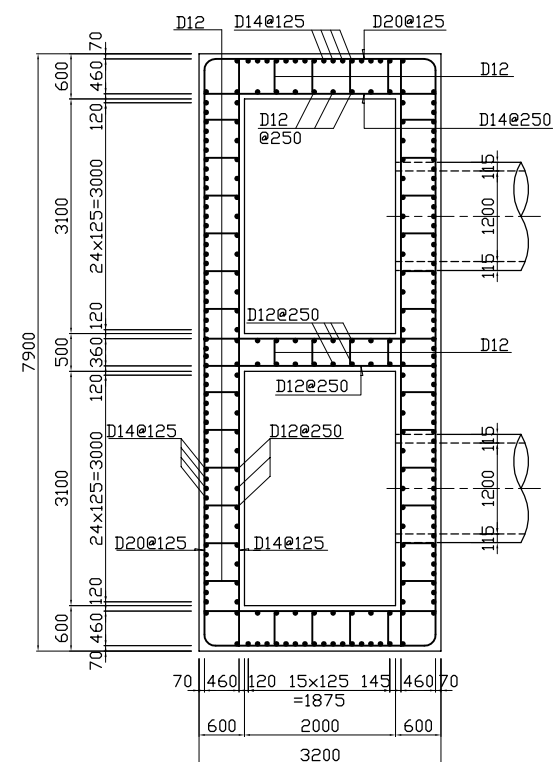
SECTION 3-3. Scale: 1/50



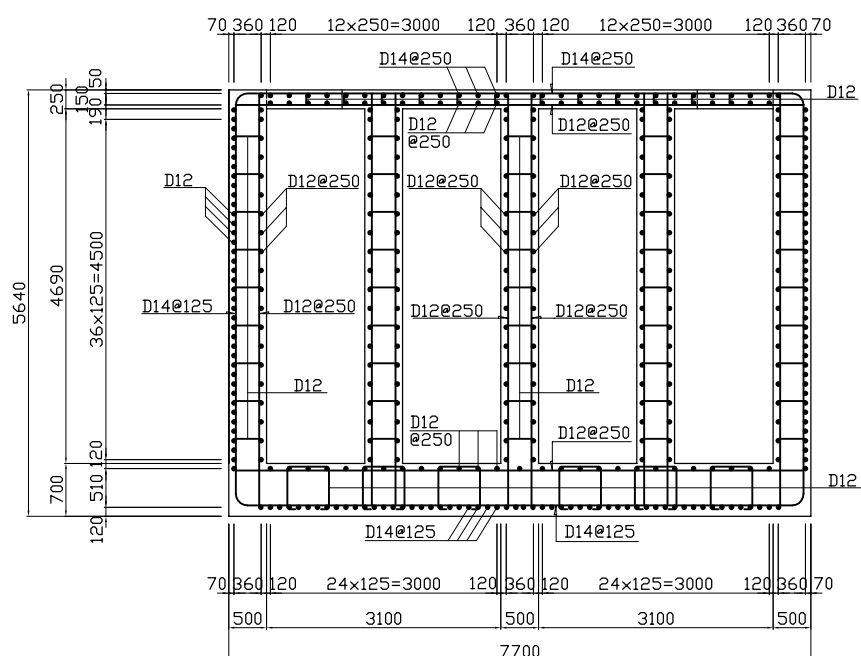
SECTION 4-4. Scale: 1/50



SECTION 5-5. Scale: 1/50



SECTION 2-2. Scale: 1/50

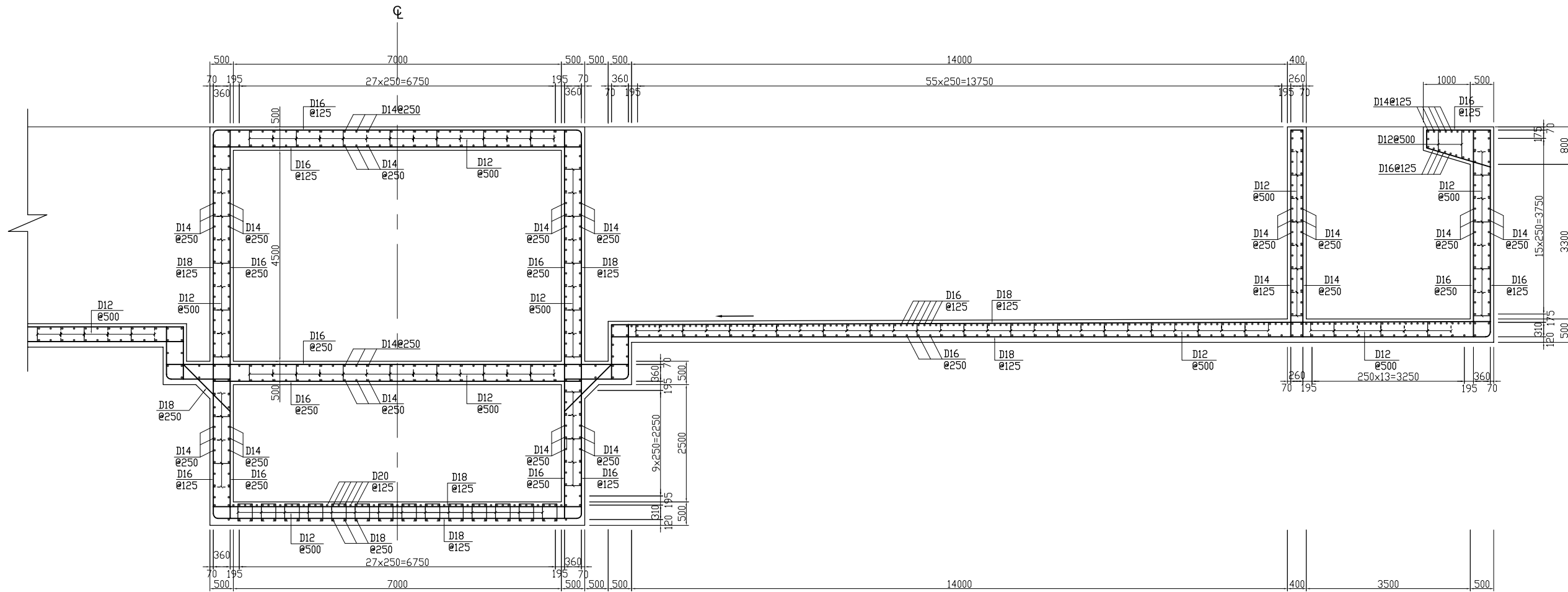


NOTES :

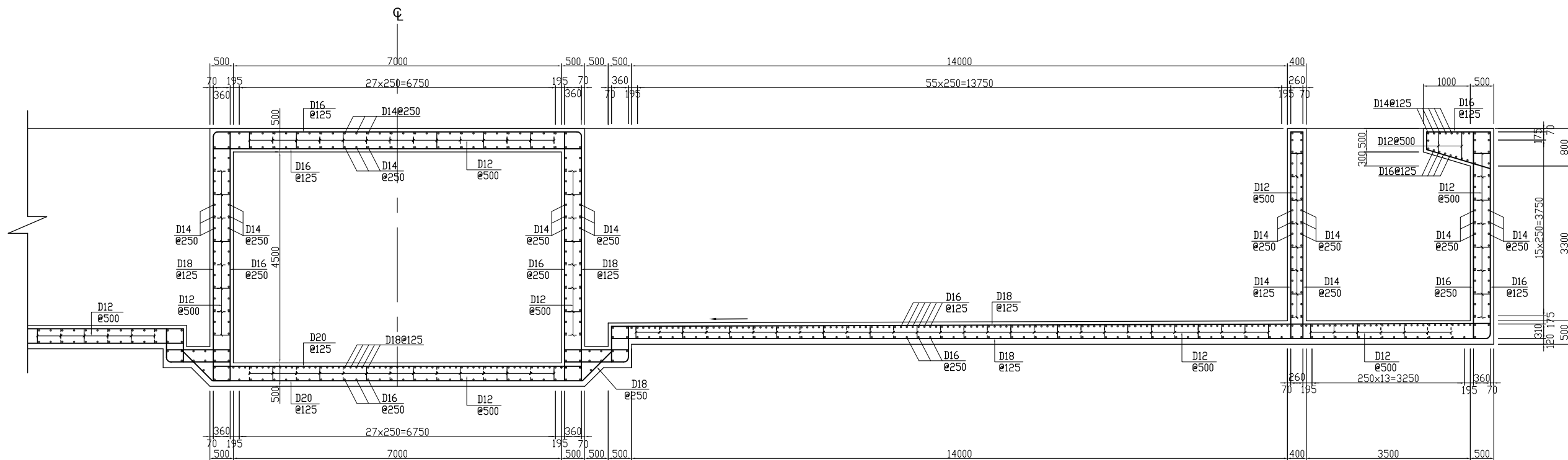
- ALL DIMENSIONS ARE MM UNLESS STATED OTHERWISE
- CONCRETE E21
- LEVELLING CONCRETE G10
- ALL REINFORCEMENT BARS ARE DEFORMED TYPE (CT5 OR EQUIVALENT AS INDICATED IN SPECIFICATION OF PACKAGE E)
- THE SPECIFICATION TO BE REFERRED FOR MORE INFORMATION OF MATERIAL GRADES

NO.	DATE	DESCRIPTIONS	BY	APRO.
REVISIONS				
PROJECT MANAGEMENT UNIT FOR HO CHI MINH CITY WATER ENVIRONMENT IMPROVEMENT				
THE DETAILED DESIGN STUDY ON HO CHI MINH CITY WATER ENVIRONMENT IMPROVEMENT PROJECT IN THE SOCIALIST REPUBLIC OF VIET NAM				
PACKAGE E CONVEYANCE SEWER CONSTRUCTION				
BAR ARRANGEMENT OF MAINTENANCE CHAMBER OF SIPHON				
SCALE : 1/50				
JICA JAPAN INTERNATIONAL COOPERATION AGENCY (JICA)				
PACIFIC CONSULTANTS INTERNATIONAL				
DESIGNED KIMURA TORU	CHECKED KONDO MASAMI			
DATE : JUNE 2001	DWG. No. PE - WWTP - 278 - 02			

COMPOST PLANT - FERMENTING VESSEL BAR ARRANGEMENT

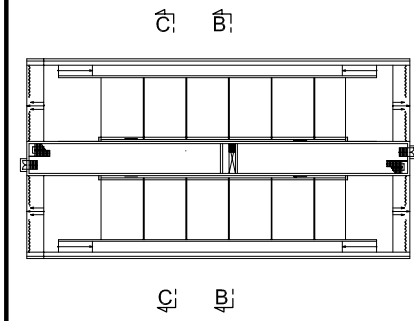


SECTION B-B Scale:1/50



SECTION C-C Scale:1/50

KEY PLAN



NOTES :

- ALL DIMENSIONS ARE MM UNLESS STATED OTHERWISE
- CONCRETE E21
- LEVELLING CONCRETE G10
- ALL REINFORCEMENT BARS ARE DEFORMED TYPE (CT5 OR EQUIVALENT AS INDICATED IN SPECIFICATION OF PACKAGE E)
- THE SPECIFICATION TO BE REFERRED FOR MORE INFORMATION OF MATERIAL GRADES

NO.	DATE	DESCRIPTIONS	BY	APRO.
-----	------	--------------	----	-------

REVISIONS

PROJECT MANAGEMENT UNIT FOR
WATER ENVIRONMENT IMPROVEMENT FOR
HO CHI MINH CITY

THE DETAILED DESIGN ON HO CHI MINH CITY
WATER ENVIRONMENT IMPROVEMENT PROJECT
IN THE SOCIALIST REPUBLIC OF VIET NAM

PACKAGE E
WASTEWATER TREATMENT PLANT
FERMENTING VESSEL
BAR ARRANGEMENT DRAWING

SCALE : 1/50

JICA JAPAN INTERNATIONAL COOPERATION
AGENCY (JICA)

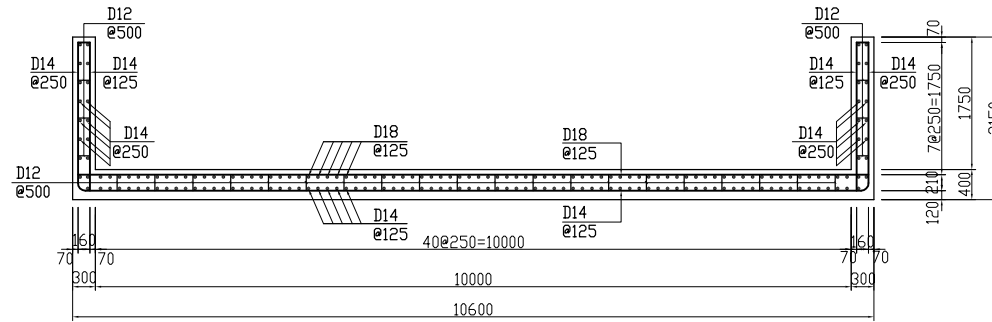
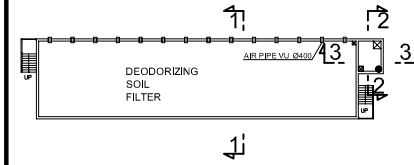
PACIFIC CONSULTANTS INTERNATIONAL

DESIGNED KIMURA TORU	CHECKED KONDO MASAMI
-------------------------	-------------------------

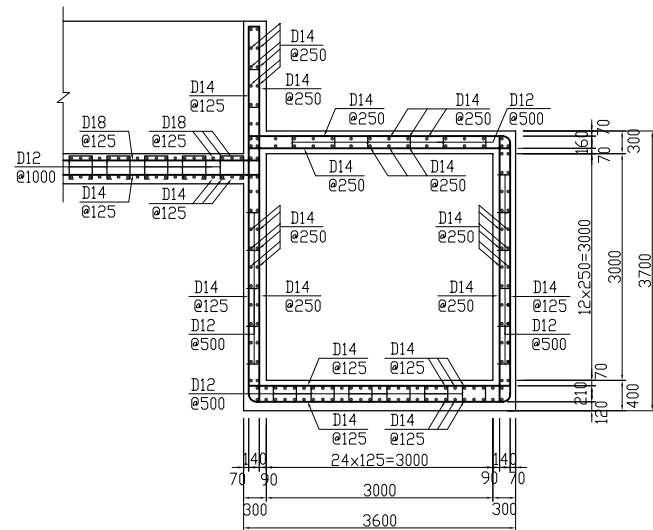
DATE : JUNE 2001 DWG. No. PE - WWTP - 279 - 01

DEODORIZING SOIL FILTER BAR ARRANGEMENT

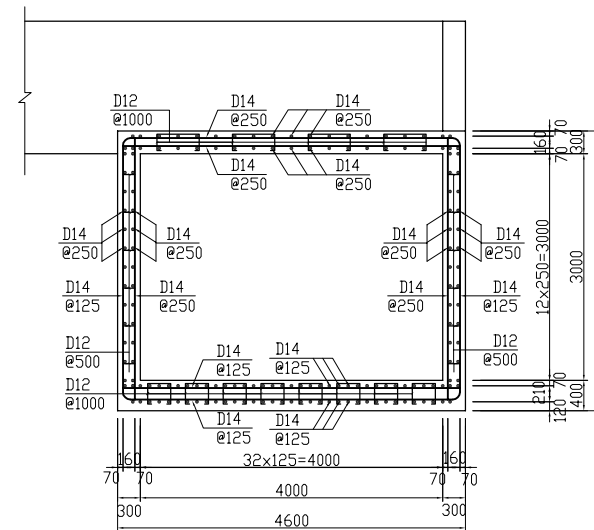
KEY PLAN



SECTION 1-1 Scale 1/50



SECTION 3-3 Scale:1/50



SECTION 2-2 Scale:1/50

NOTES :

- ALL DIMENSIONS ARE MM UNLESS STATED OTHERWISE
- CONCRETE E21
- LEVELLING CONCRETE G10
- ALL REINFORCEMENT BARS ARE DEFORMED TYPE (CT5 OR EQUIVALENT AS INDICATED IN SPECIFICATION OF PACKAGE E)
- THE SPECIFICATION TO BE REFERRED FOR MORE INFORMATION OF MATERIAL GRADES

NO.	DATE	DESCRIPTIONS	BY	APRO.

DATE	DESCRIPTIONS	BY	APRO.

REVISIONS

PROJECT MANAGEMENT UNIT FOR
WATER ENVIRONMENT IMPROVEMENT FOR
HO CHI MINH CITY

THE DETAILED DESIGN ON HO CHI MINH CITY
WATER ENVIRONMENT IMPROVEMENT PROJECT
IN THE SOCIALIST REPUBLIC OF VIET NAM

PACKAGE E
WASTEWATER TREATMENT PLANT
DEODORIZING SOIL FILTER
BAR ARRANGEMENT DRAWING

SCALE : 1/50

JICA JAPAN INTERNATIONAL COOPERATION
AGENCY (JICA)

PACIFIC CONSULTANTS INTERNATIONAL

DESIGNED
KIMURA TORU

CHECKED
KONDO MASAMI

DATE : JUNE 2001

DWG. No. PE - WWTP - 279 - 02