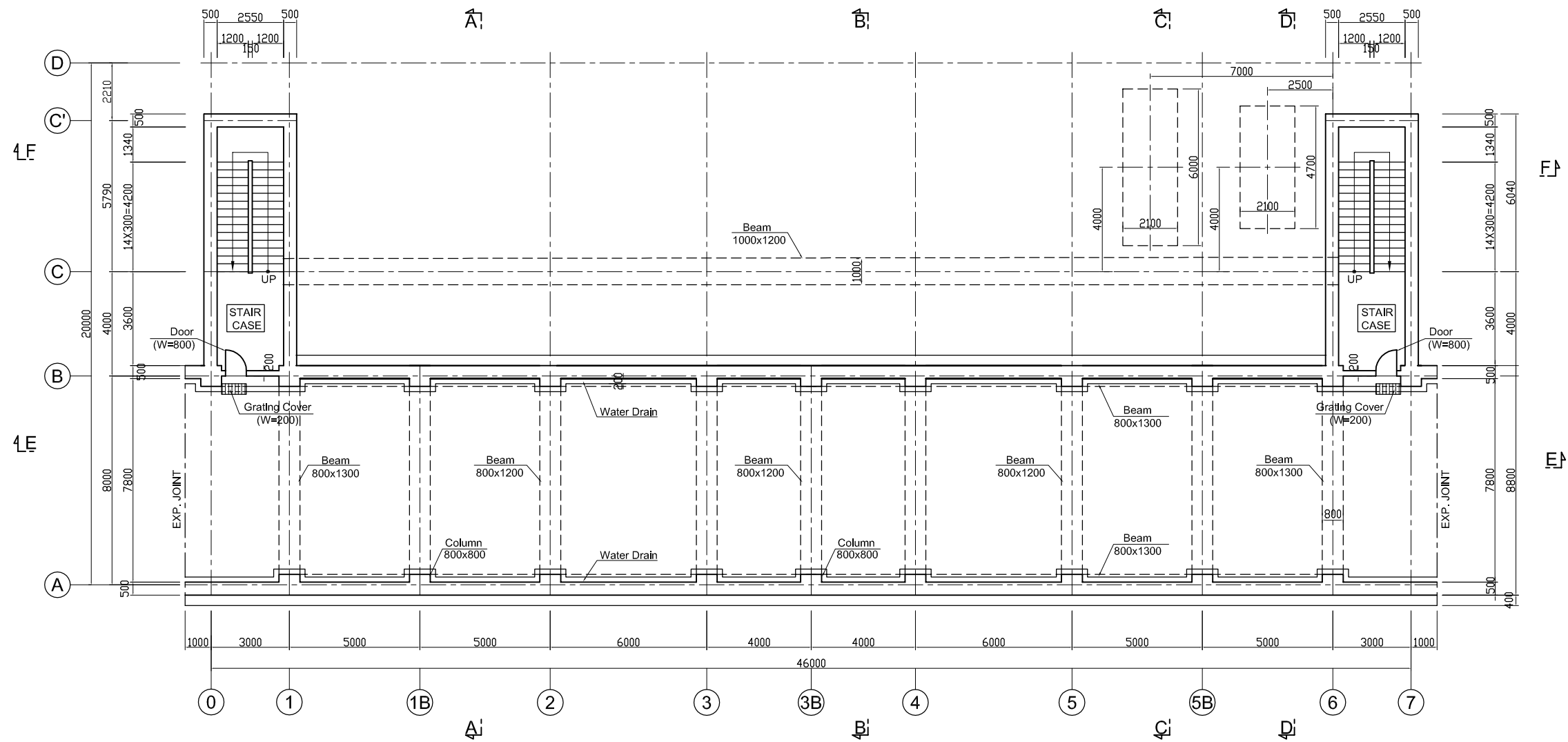
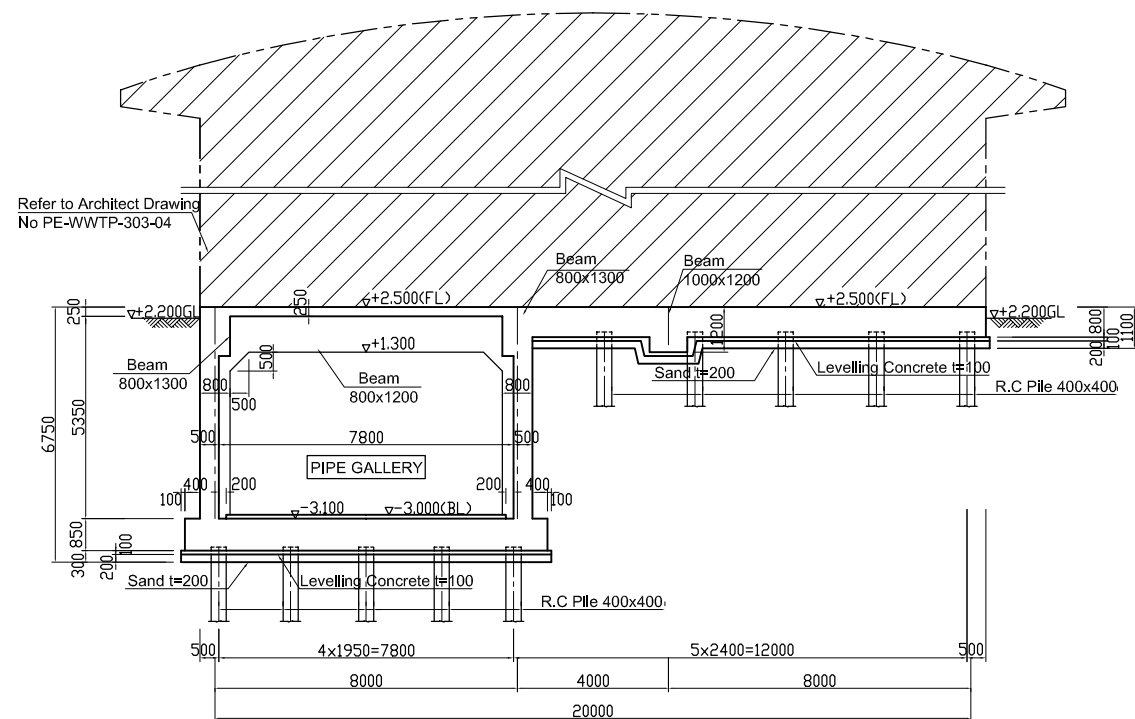


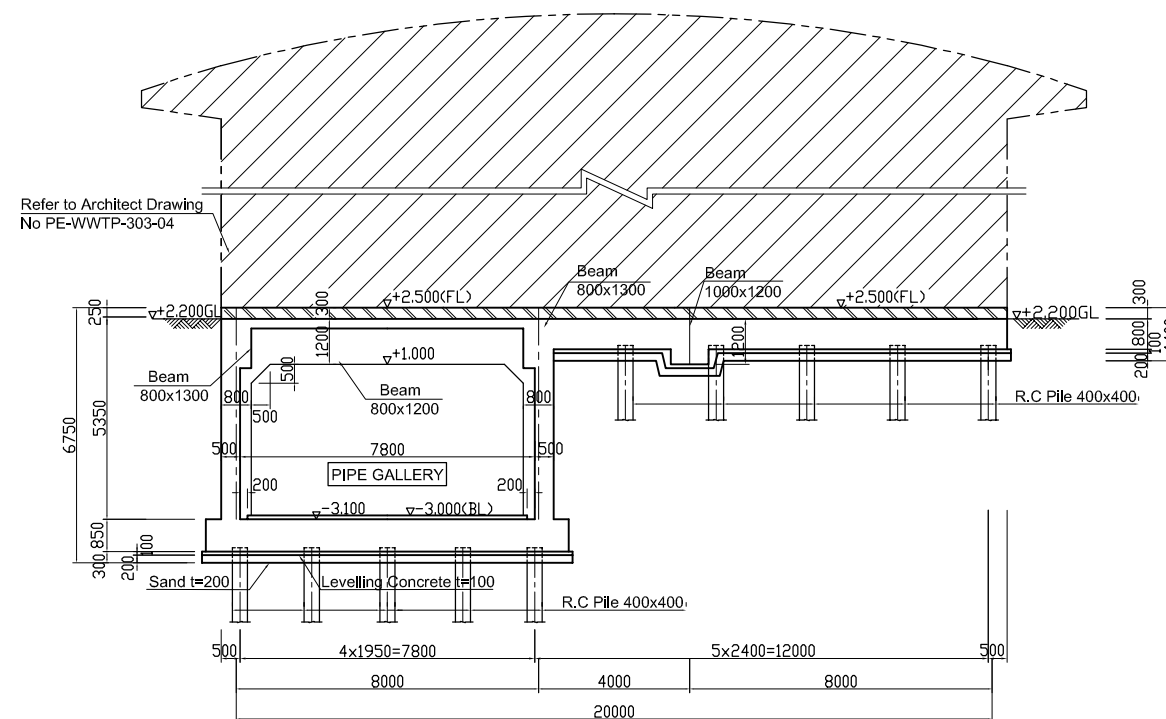
MAIN BUILDING STRUCTURES (1)



UNDER GROUND FLOOR PLAN. Scale:1/100

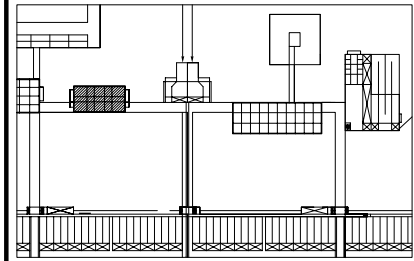


SECTION A-A. Scale:1/100



SECTION B-B. Scale:1/100

KEY PLAN



NOTES :

- ALL DIMENSIONS ARE MM UNLESS STATED OTHERWISE
- CONCRETE E21
- LEVELLING CONCRETE G10
- ALL REINFORCEMENT BARS ARE DEFORMED TYPE (CT5 OR EQUIVALENT AS INDICATED IN SPECIFICATION OF PACKAGE E)
- THE SPECIFICATION TO BE REFERRED FOR MORE INFORMATION OF MATERIAL GRADES
- PILE LOCATION SHOWN ON PILE ARRANGEMENT DWG. No. PE - WWTP - 257 - 01
- DETAILS OF R.C PILE SHOWN ON DWG. No. PE - WWTP - 265 - 01

DATE	DESCRIPTIONS	BY	APRO.

REVISIONS

PROJECT MANAGEMENT UNIT FOR
WATER ENVIRONMENT IMPROVEMENT FOR
HO CHI MINH CITY

THE DETAILED DESIGN ON HO CHI MINH CITY
WATER ENVIRONMENT IMPROVEMENT PROJECT
IN THE SOCIALIST REPUBLIC OF VIET NAM

PACKAGE E
WASTEWATER TREATMENT PLANT
MAIN BUILDING STRUCTURES
(No. 1)

SCALE : 1/100

JICA JAPAN INTERNATIONAL COOPERATION
AGENCY (JICA)

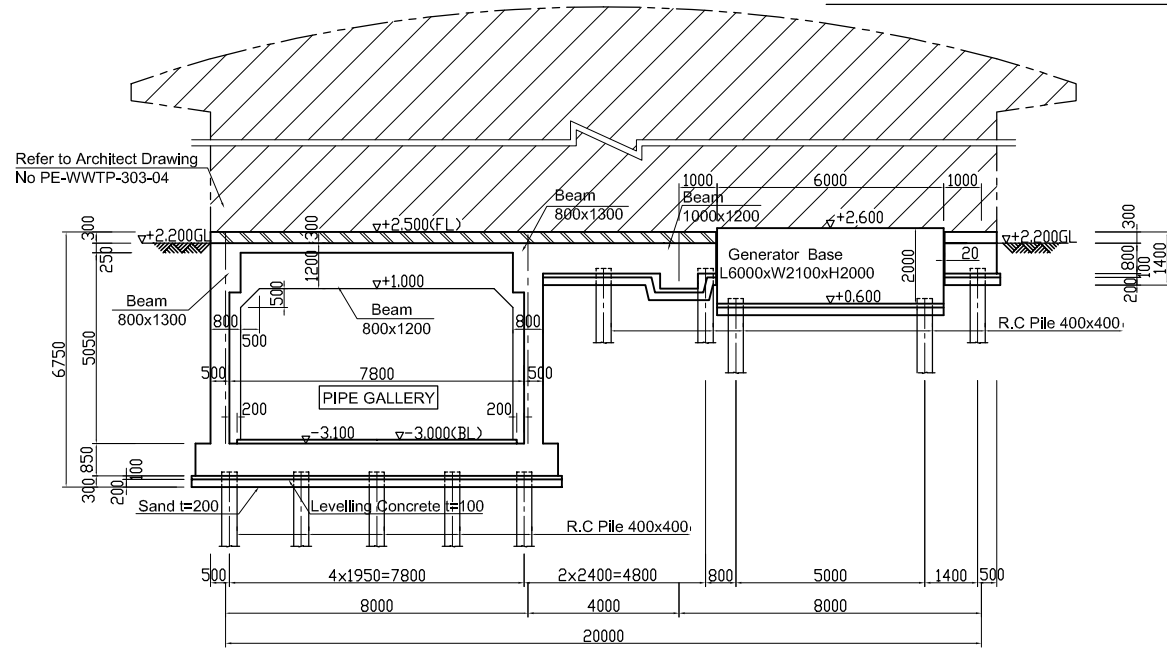
PACIFIC CONSULTANTS INTERNATIONAL

DESIGNED
KIMURA TORU

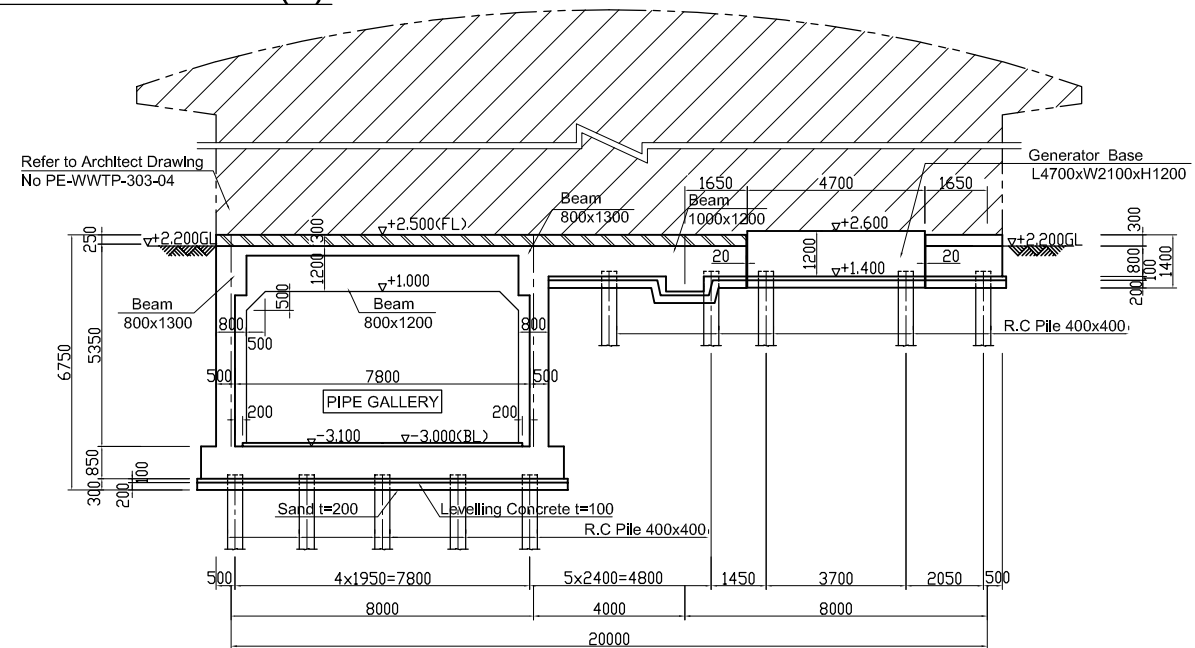
CHECKED
KONDO MASAMI

DATE : JUNE 2001 DWG. No. PE - WWTP - 273 - 01

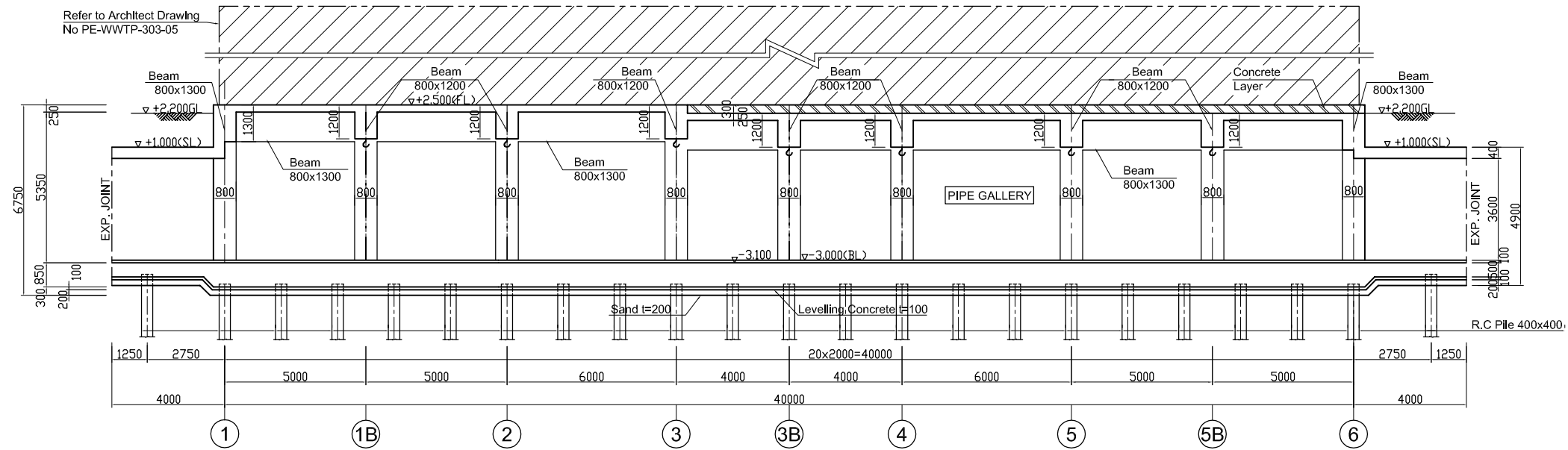
MAIN BUILDING STRUCTURES (2)



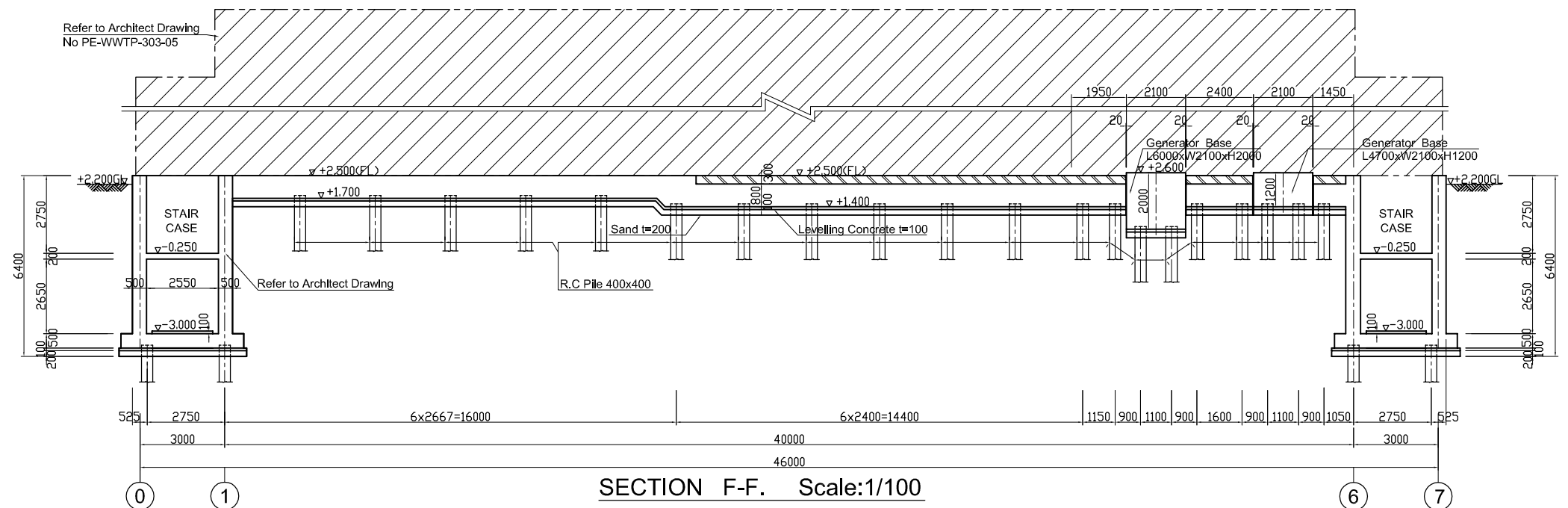
SECTION C-C. Scale:1/100



SECTION D-D. Scale:1/100

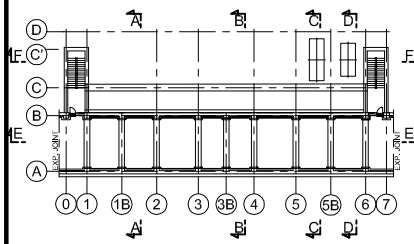


SECTION E-E. Scale:1/100



SECTION F-F. Scale:1/100

KEY PLAN



NOTES :

- ALL DIMENSIONS ARE MM UNLESS STATED OTHERWISE
- CONCRETE E21
- LEVELLING CONCRETE G10
- ALL REINFORCEMENT BARS ARE DEFORMED TYPE (CT5 OR EQUIVALENT AS INDICATED IN SPECIFICATION OF PACKAGE E)
- THE SPECIFICATION TO BE REFERRED FOR MORE INFORMATION OF MATERIAL GRADES
- PILE LOCATION SHOWN ON PILE ARRANGEMENT DWG. No. PE - WWTP - 257 - 01
- DETAILS OF R.C PILE SHOWN ON DWG. No. PE - WWTP - 265 - 01

DATE	DESCRIPTIONS	BY	APRO.

REVISIONS

PROJECT MANAGEMENT UNIT FOR
WATER ENVIRONMENT IMPROVEMENT FOR
HO CHI MINH CITY

THE DETAILED DESIGN ON HO CHI MINH CITY
WATER ENVIRONMENT IMPROVEMENT PROJECT
IN THE SOCIALIST REPUBLIC OF VIET NAM

PACKAGE E
WASTEWATER TREATMENT PLANT
MAIN BUILDING STRUCTURES
(No. 2)

SCALE : 1/100

JICA JAPAN INTERNATIONAL COOPERATION
AGENCY (JICA)

PACIFIC CONSULTANTS INTERNATIONAL

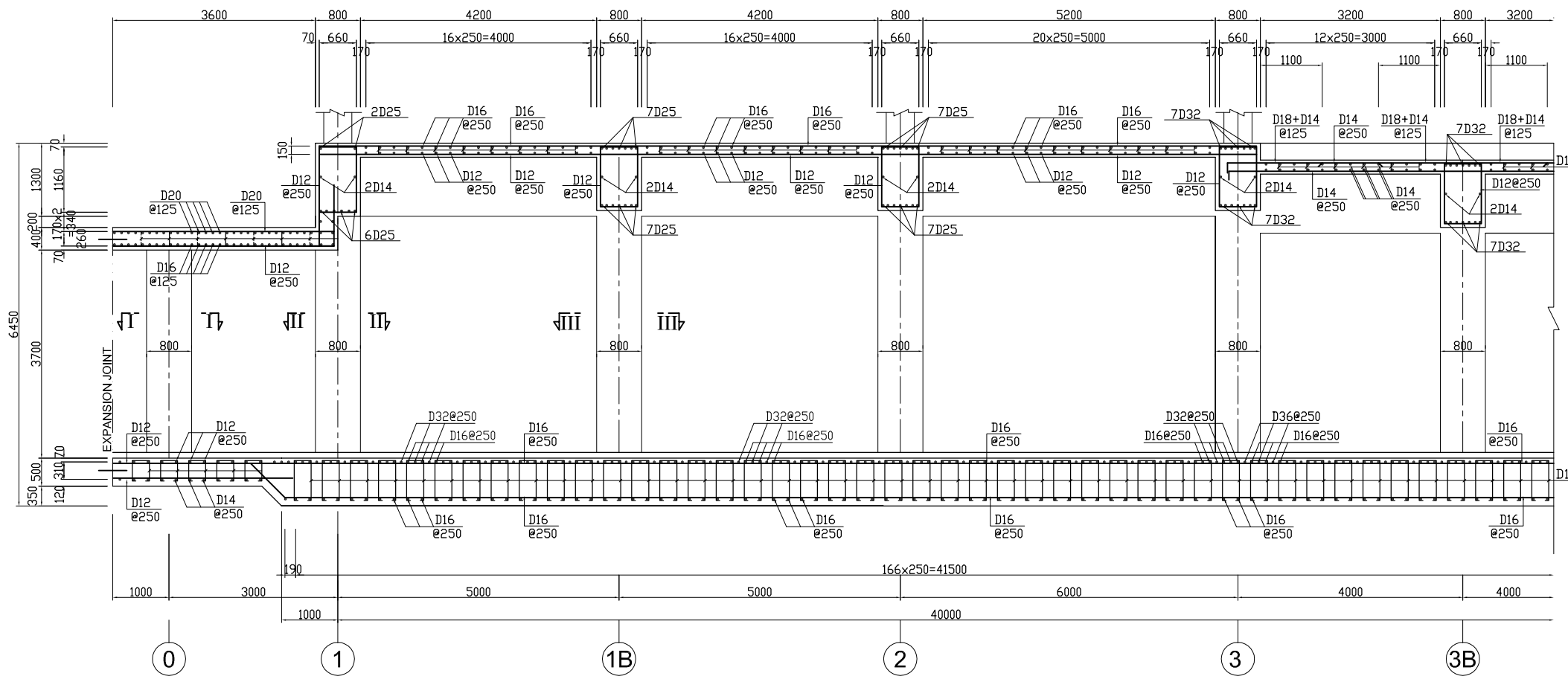
DESIGNED
KIMURA TORU

CHECKED
KONDO MASAMI

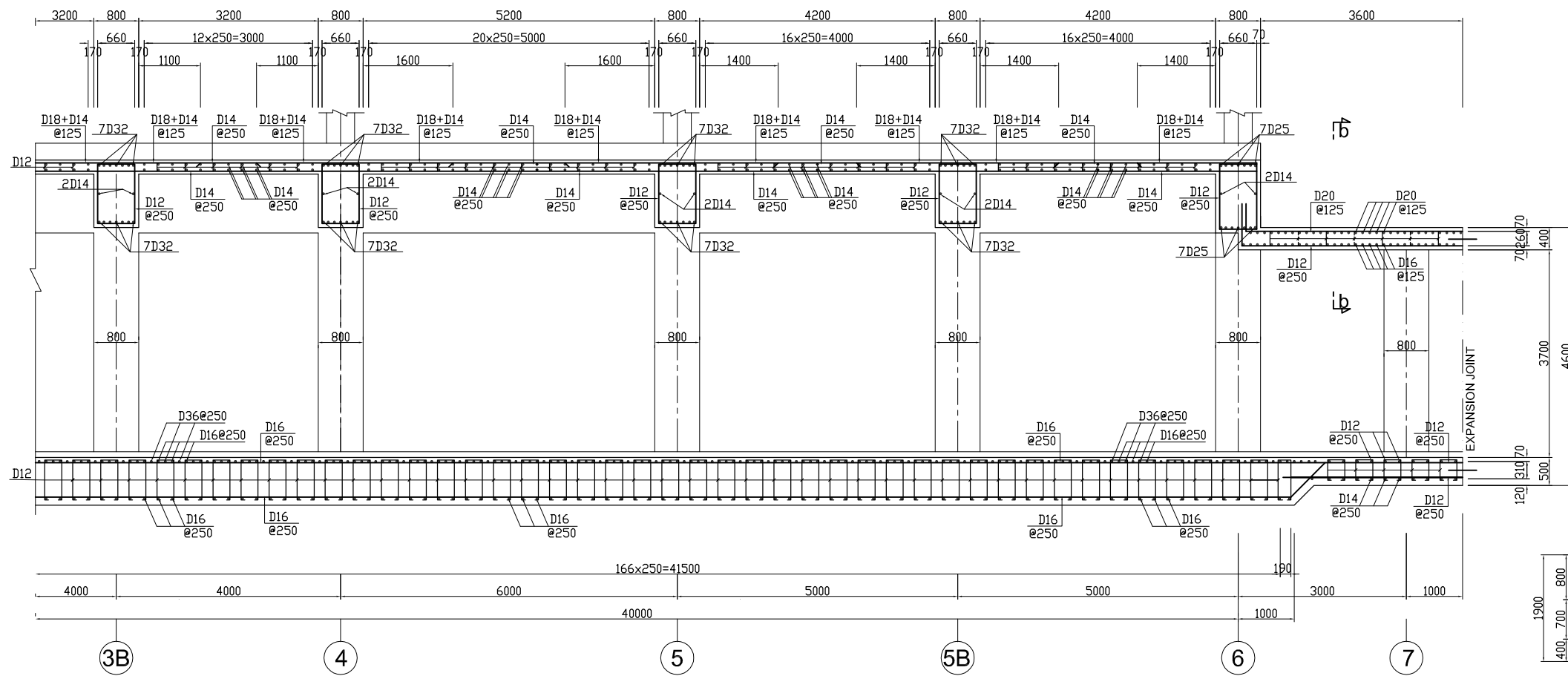
DATE : JUNE 2001

DWG. No. PE - WWTP - 273 - 02

MAIN BUILDING BAR ARRANGEMENT (1)

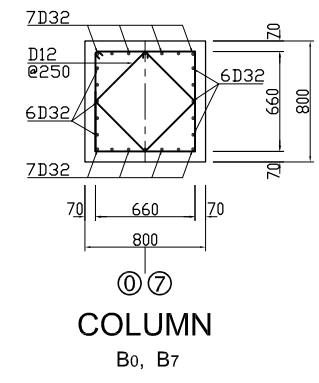


SECTION E - E (1) Scale:1/50



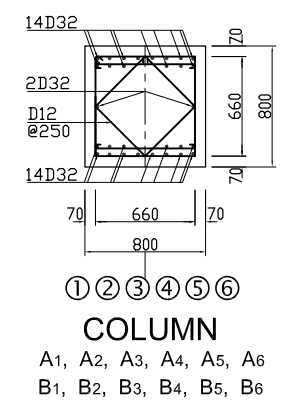
SECTION E - E (2) Scale:1/50

SECTION I - I Scale:1/25



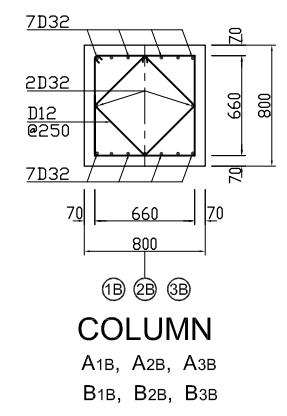
COLUMN
B0, B7

SECTION II - II Scale:1/25



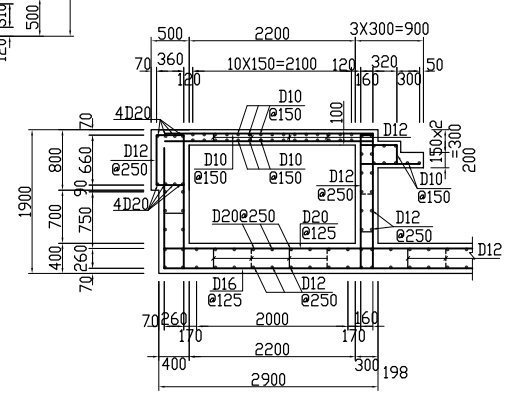
COLUMN
A1, A2, A3, A4, A5, A6
B1, B2, B3, B4, B5, B6

SECTION III - III Scale:1/25

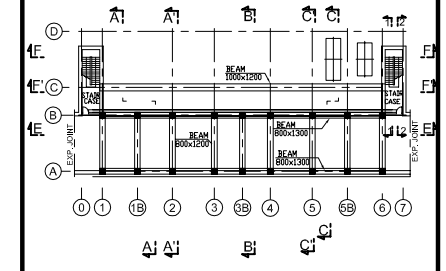


COLUMN
A1B, A2B, A3B
B1B, B2B, B3B

SECTION b - b Scale:1/50



KEY PLAN

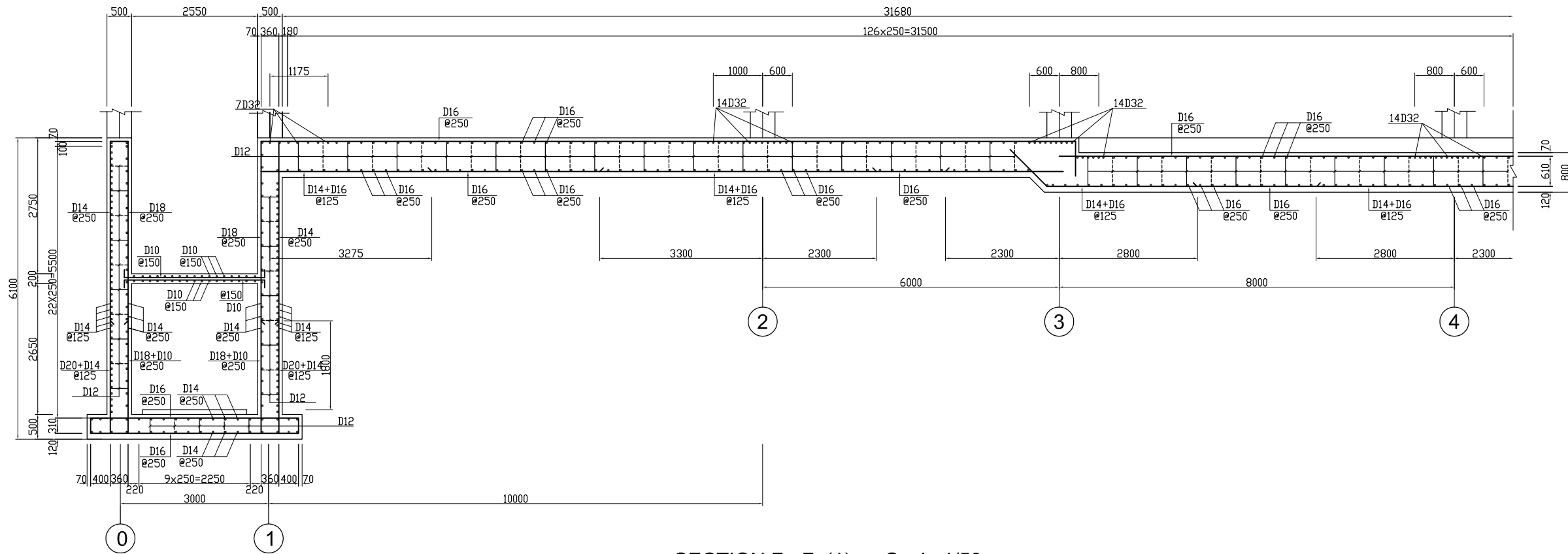


NOTES :

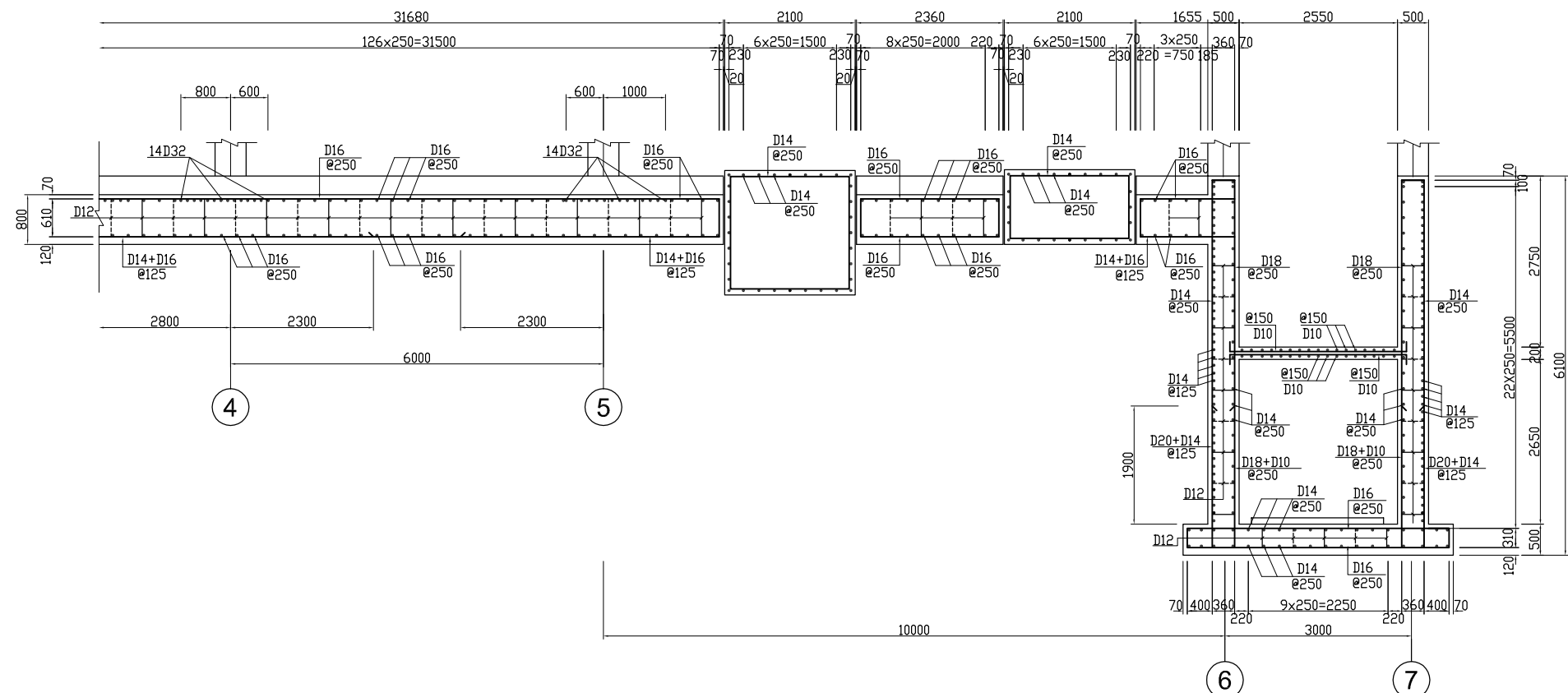
- ALL DIMENSIONS ARE MM UNLESS STATED OTHERWISE
- CONCRETE E21
- LEVELLING CONCRETE G10
- ALL REINFORCEMENT BARS ARE DEFORMED TYPE (CT5 OR EQUIVALENT AS INDICATED IN SPECIFICATION OF PACKAGE E)
- THE SPECIFICATION TO BE REFERRED FOR MORE INFORMATION OF MATERIAL GRADES

DATE	DESCRIPTIONS	BY	APRO.
REVISIONS			
PROJECT MANAGEMENT UNIT FOR WATER ENVIRONMENT IMPROVEMENT FOR HO CHI MINH CITY			
THE DETAILED DESIGN ON HO CHI MINH CITY WATER ENVIRONMENT IMPROVEMENT PROJECT IN THE SOCIALIST REPUBLIC OF VIET NAM			
PACKAGE E WASTEWATER TREATMENT PLANT MAIN BUILDING BAR ARRANGEMENT (No. 1)			
SCALE : 1/25, 1/50			
JAPAN INTERNATIONAL COOPERATION AGENCY (JICA)			
PACIFIC CONSULTANTS INTERNATIONAL			
DESIGNED KIMURA TORU	CHECKED KONDO MASAMI		
DATE : JUNE 2001	DWG. No. PE - WWTP - 273 - 03		

MAIN BUILDING BAR ARRANGEMENT (2)

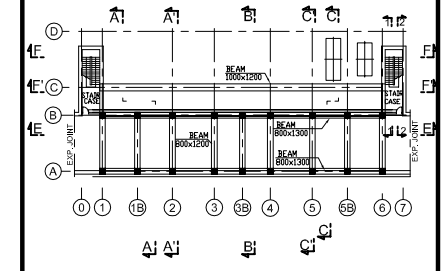


SECTION F - F (1). Scale:1/50



SECTION F - F (2). Scale:1/50

KEY PLAN

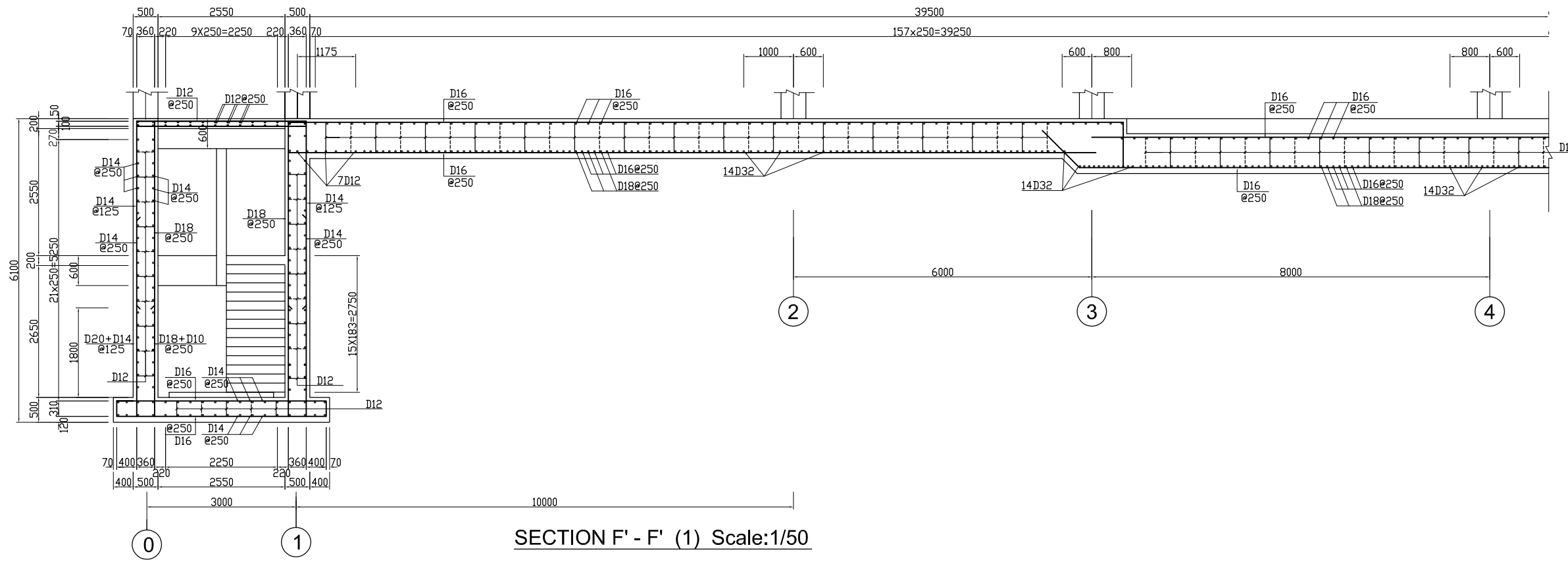


NOTES :

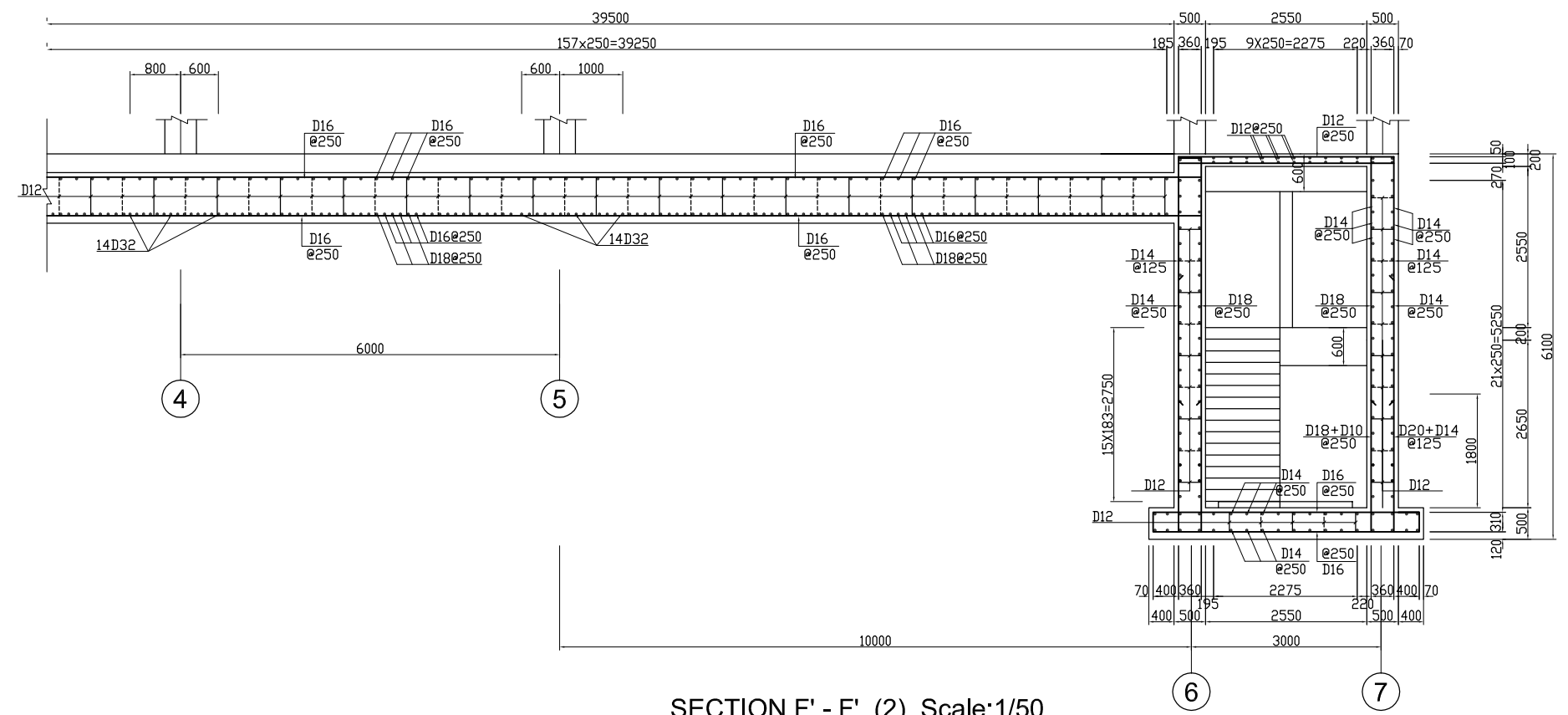
- ALL DIMENSIONS ARE MM UNLESS STATED OTHERWISE
- CONCRETE E21
- LEVELLING CONCRETE G10
- ALL REINFORCEMENT BARS ARE DEFORMED TYPE (CT5 OR EQUIVALENT AS INDICATED IN SPECIFICATION OF PACKAGE E)
- THE SPECIFICATION TO BE REFERRED FOR MORE INFORMATION OF MATERIAL GRADES

DATE	DESCRIPTIONS	BY	APRO.
REVISIONS			
PROJECT MANAGEMENT UNIT FOR WATER ENVIRONMENT IMPROVEMENT FOR HO CHI MINH CITY			
THE DETAILED DESIGN ON HO CHI MINH CITY WATER ENVIRONMENT IMPROVEMENT PROJECT IN THE SOCIALIST REPUBLIC OF VIET NAM			
PACKAGE E WASTEWATER TREATMENT PLANT MAIN BUILDING BAR ARRANGEMENT (No. 2)			
SCALE : 1/50			
JICA JAPAN INTERNATIONAL COOPERATION AGENCY (JICA)			
PACIFIC CONSULTANTS INTERNATIONAL			
DESIGNED KIMURA TORU	CHECKED KONDO MASAMI		
DATE : JUNE 2001	DWG. No. PE - WWTP - 273 - 04		

MAIN BUILDING BAR ARRANGEMENT (3)

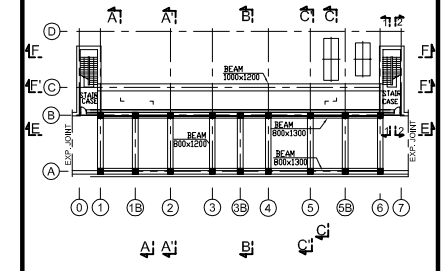


SECTION F' - F' (1) Scale:1/50



SECTION F' - F' (2) Scale:1/50

KEY PLAN

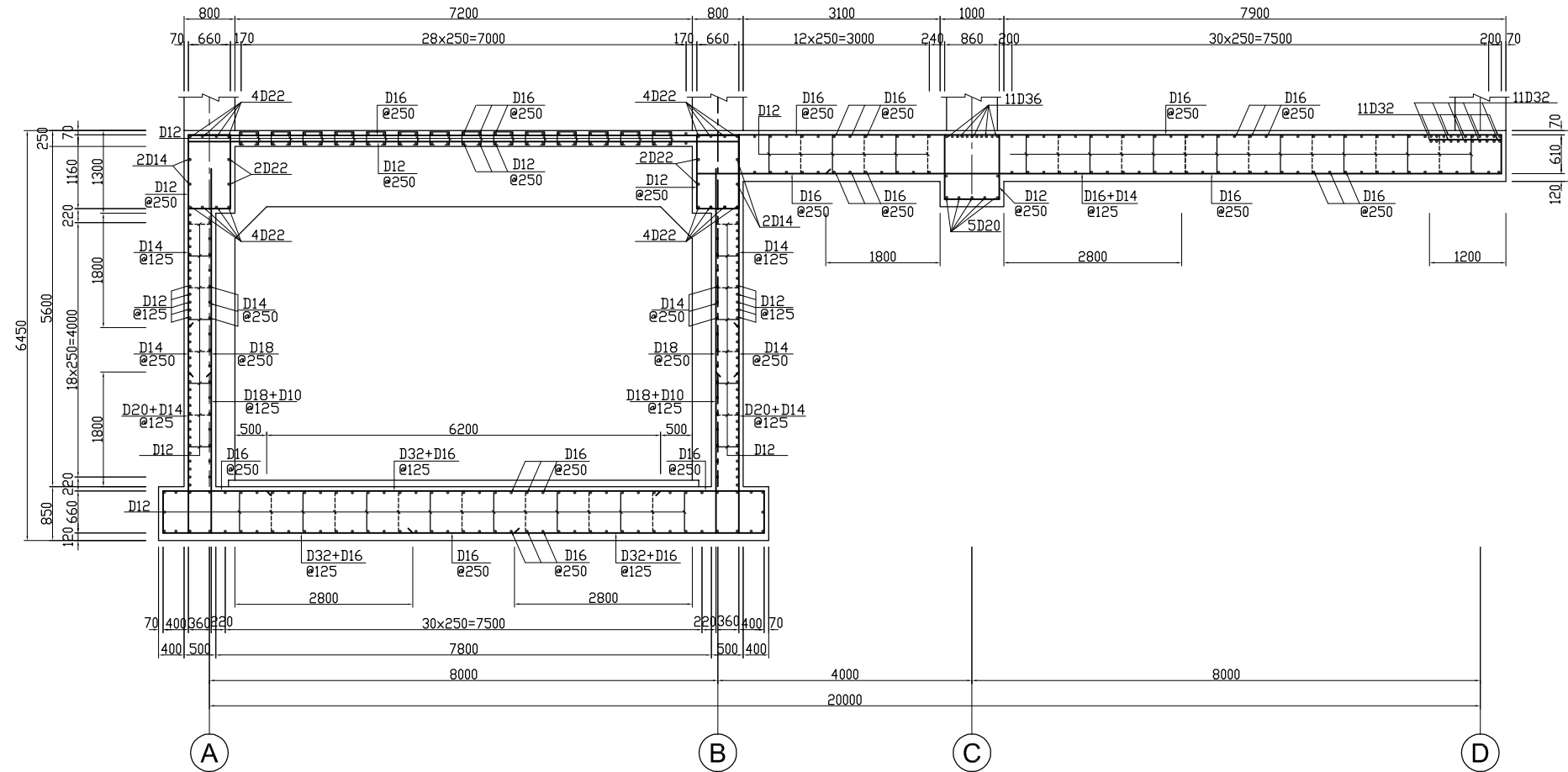


NOTES :

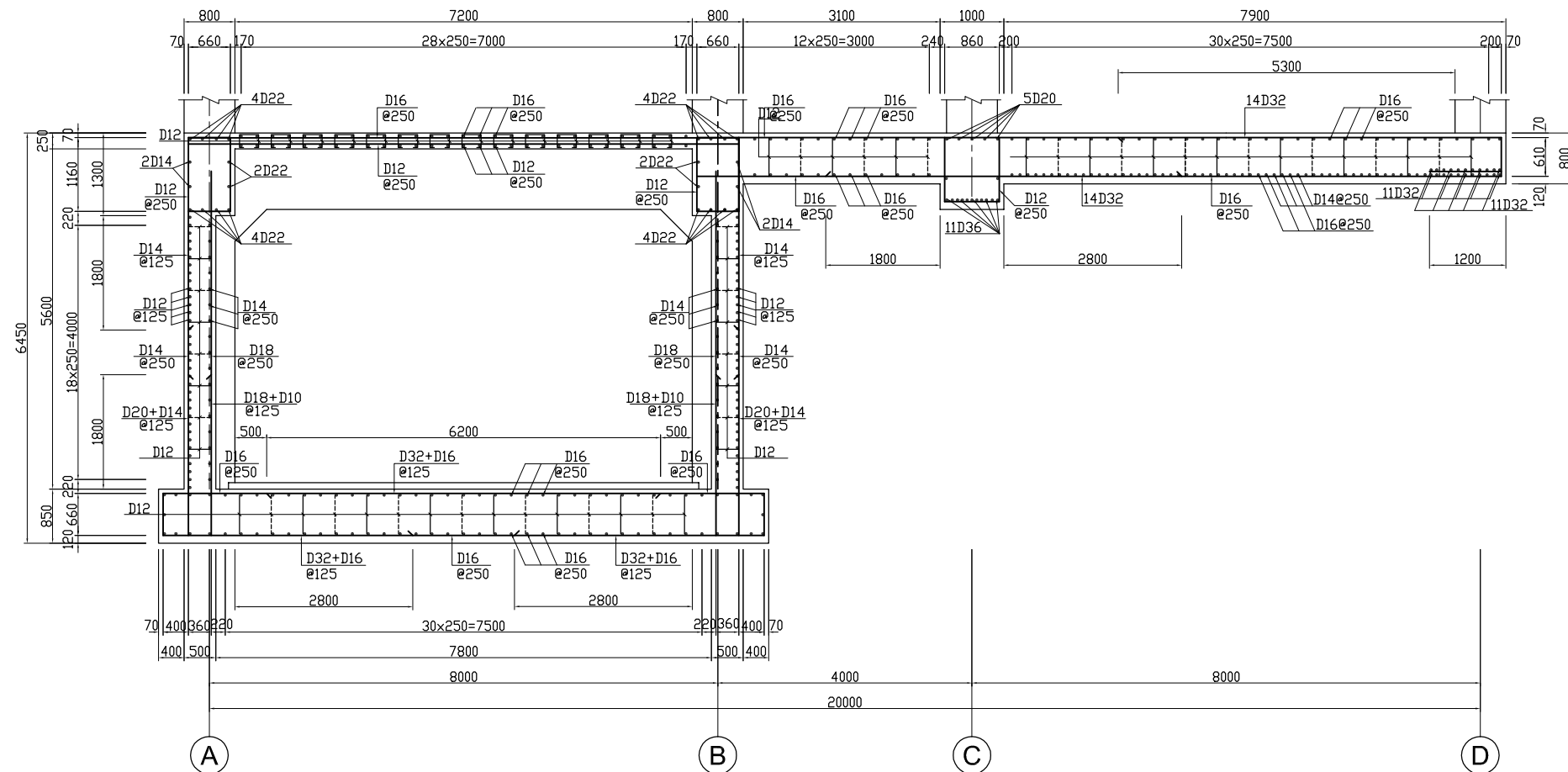
- ALL DIMENSIONS ARE MM UNLESS STATED OTHERWISE
- CONCRETE E21
- LEVELLING CONCRETE G10
- ALL REINFORCEMENT BARS ARE DEFORMED TYPE (CT5 OR EQUIVALENT AS INDICATED IN SPECIFICATION OF PACKAGE E)
- THE SPECIFICATION TO BE REFERRED FOR MORE INFORMATION OF MATERIAL GRADES

DATE	DESCRIPTIONS	BY	APRO.
REVISIONS			
PROJECT MANAGEMENT UNIT FOR WATER ENVIRONMENT IMPROVEMENT FOR HO CHI MINH CITY			
THE DETAILED DESIGN ON HO CHI MINH CITY WATER ENVIRONMENT IMPROVEMENT PROJECT IN THE SOCIALIST REPUBLIC OF VIET NAM			
PACKAGE E WASTEWATER TREATMENT PLANT MAIN BUILDING BAR ARRANGEMENT (No. 3)			
SCALE : 1/50			
JAPAN INTERNATIONAL COOPERATION AGENCY (JICA)			
PACIFIC CONSULTANTS INTERNATIONAL			
DESIGNED KIMURA TORU	CHECKED KONDO MASAMI		
DATE : JUNE 2001	DWG. No. PE - WWTP - 273 - 05		

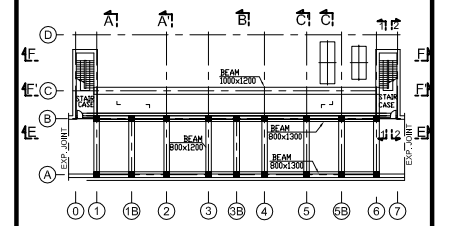
MAIN BUILDING BAR ARRANGEMENT (4)



SECTION A - A Scale:1/50



SECTION A' - A' Scale:1/50



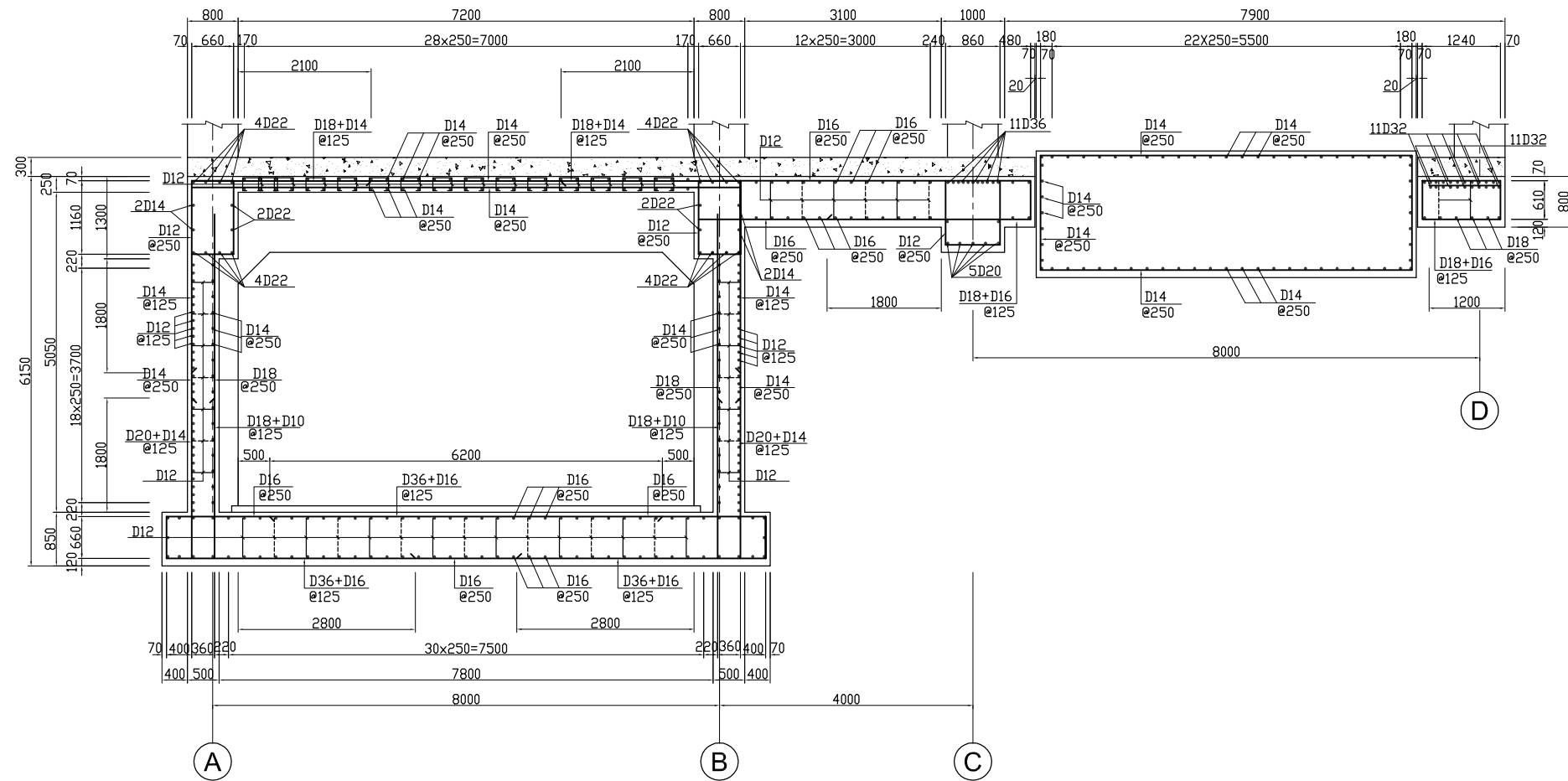
KEY PLAN

NOTES :

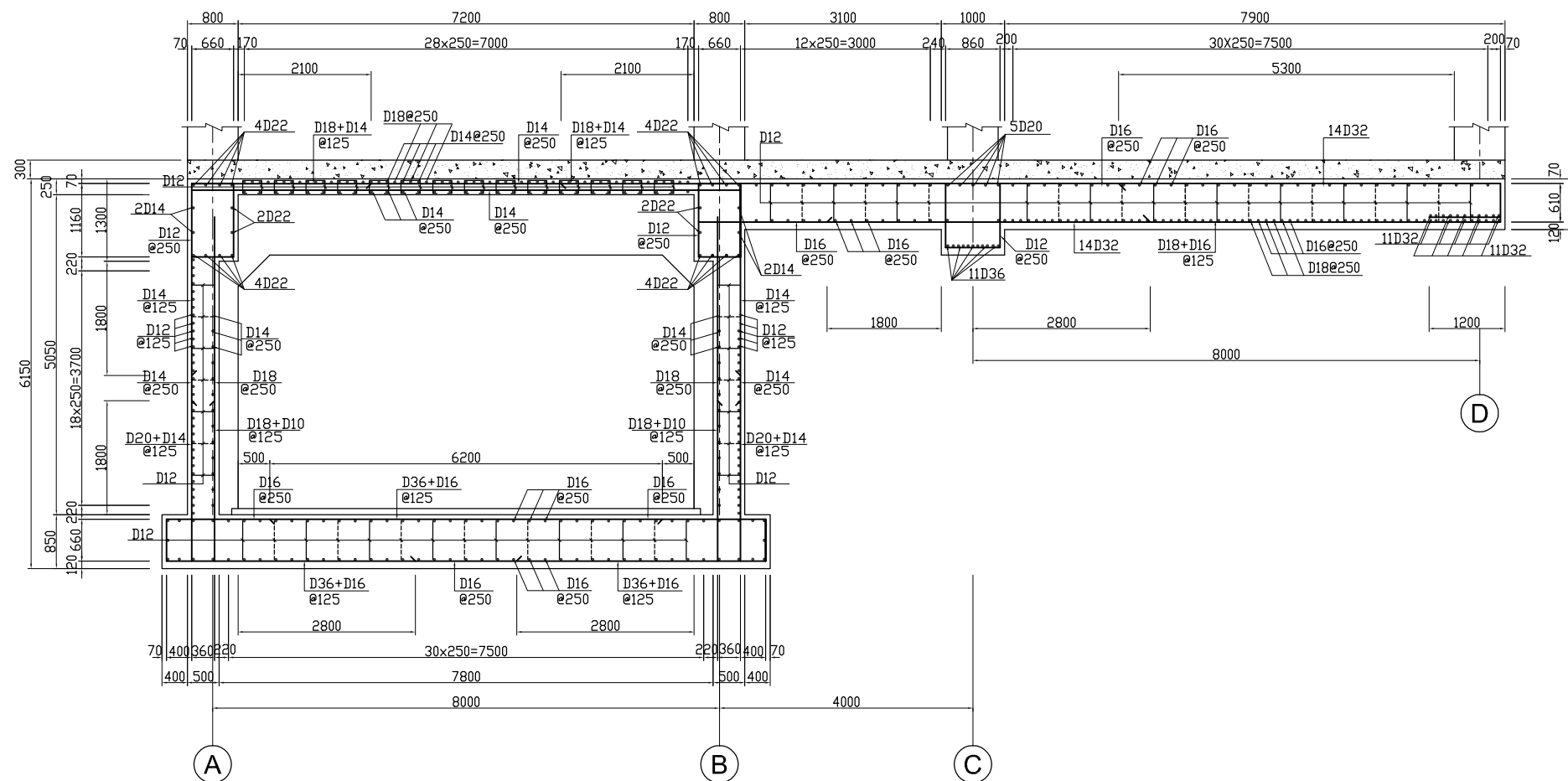
- ALL DIMENSIONS ARE MM UNLESS STATED OTHERWISE
- CONCRETE E21
- LEVELLING CONCRETE G10
- ALL REINFORCEMENT BARS ARE DEFORMED TYPE (CT5 OR EQUIVALENT AS INDICATED IN SPECIFICATION OF PACKAGE E)
- THE SPECIFICATION TO BE REFERRED FOR MORE INFORMATION OF MATERIAL GRADES

DATE	DESCRIPTIONS	BY	APRO.
REVISIONS			
PROJECT MANAGEMENT UNIT FOR WATER ENVIRONMENT IMPROVEMENT FOR HO CHI MINH CITY			
THE DETAILED DESIGN ON HO CHI MINH CITY WATER ENVIRONMENT IMPROVEMENT PROJECT IN THE SOCIALIST REPUBLIC OF VIET NAM			
PACKAGE E WASTEWATER TREATMENT PLANT MAIN BUILDING BAR ARRANGEMENT (No. 4)			
SCALE : 1/50			
JICA JAPAN INTERNATIONAL COOPERATION AGENCY (JICA)			
PACIFIC CONSULTANTS INTERNATIONAL			
DESIGNED KIMURA TORU	CHECKED KONDO MASAMI		
DATE : JUNE 2001	DWG. No. PE - WWTP - 273 - 06		

MAIN BUILDING BAR ARRANGEMENT (5)

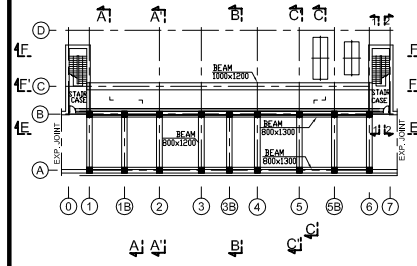


SECTION C - C Scale:1/50



SECTION C' - C' Scale:1/50

KEY PLAN

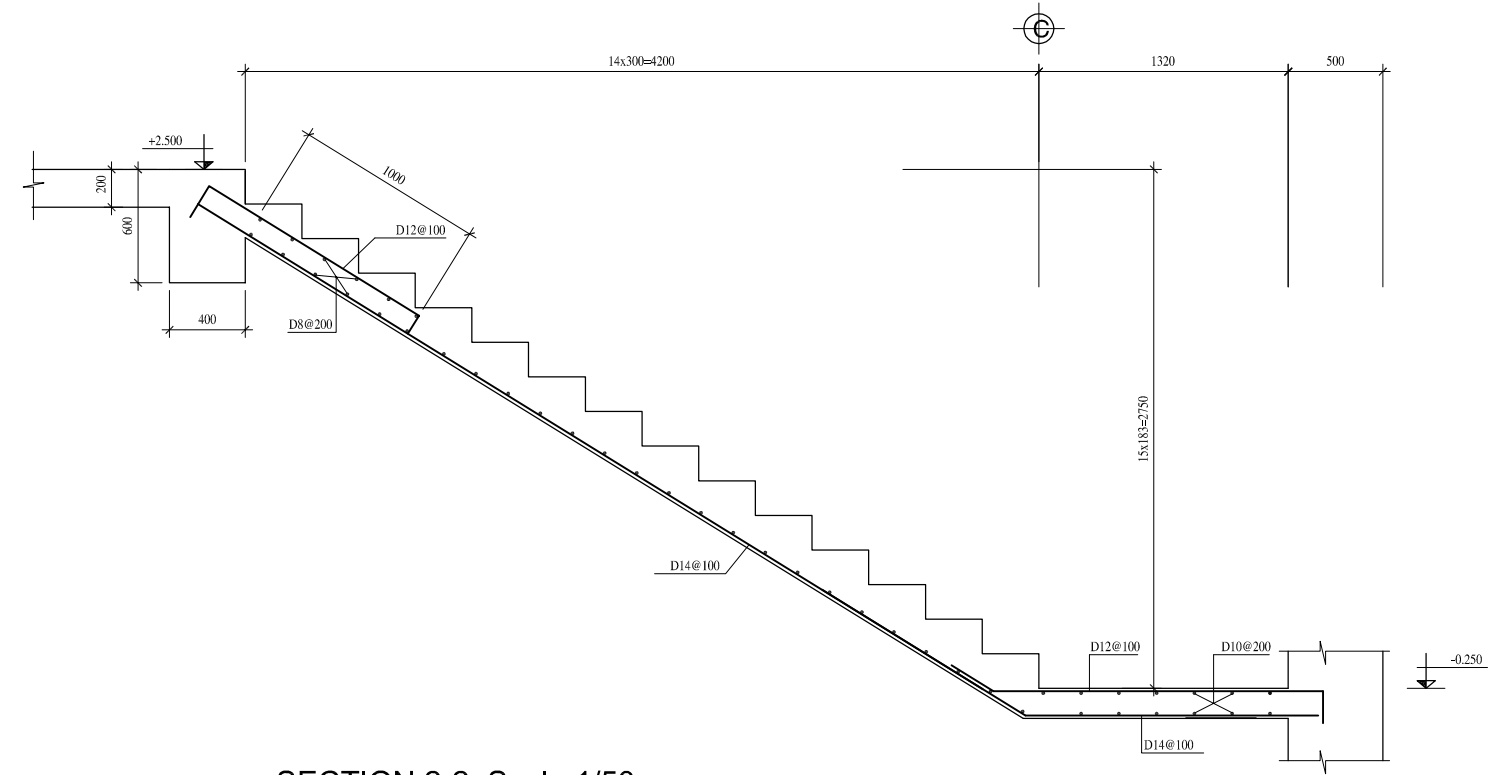


NOTES :

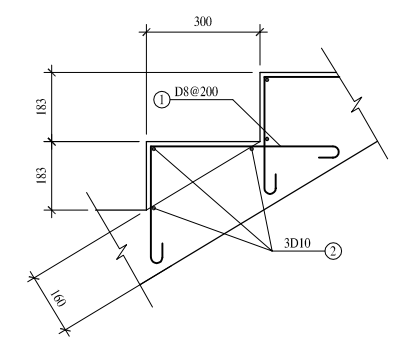
- ALL DIMENSIONS ARE MM UNLESS STATED OTHERWISE
- CONCRETE E21
- LEVELLING CONCRETE G10
- ALL REINFORCEMENT BARS ARE DEFORMED TYPE (CT5 OR EQUIVALENT AS INDICATED IN SPECIFICATION OF PACKAGE E)
- THE SPECIFICATION TO BE REFERRED FOR MORE INFORMATION OF MATERIAL GRADES

DATE	DESCRIPTIONS	BY	APRO.
REVISIONS			
PROJECT MANAGEMENT UNIT FOR WATER ENVIRONMENT IMPROVEMENT FOR HO CHI MINH CITY			
THE DETAILED DESIGN ON HO CHI MINH CITY WATER ENVIRONMENT IMPROVEMENT PROJECT IN THE SOCIALIST REPUBLIC OF VIET NAM			
PACKAGE E WASTEWATER TREATMENT PLANT MAIN BUILDING BAR ARRANGEMENT (No. 5)			
SCALE : 1/25, 1/50			
JAPAN INTERNATIONAL COOPERATION AGENCY (JICA)			
PACIFIC CONSULTANTS INTERNATIONAL			
DESIGNED KIMURA TORU	CHECKED KONDO MASAMI		
DATE : JUNE 2001	DWG. No. PE - WWTP - 273 - 07		

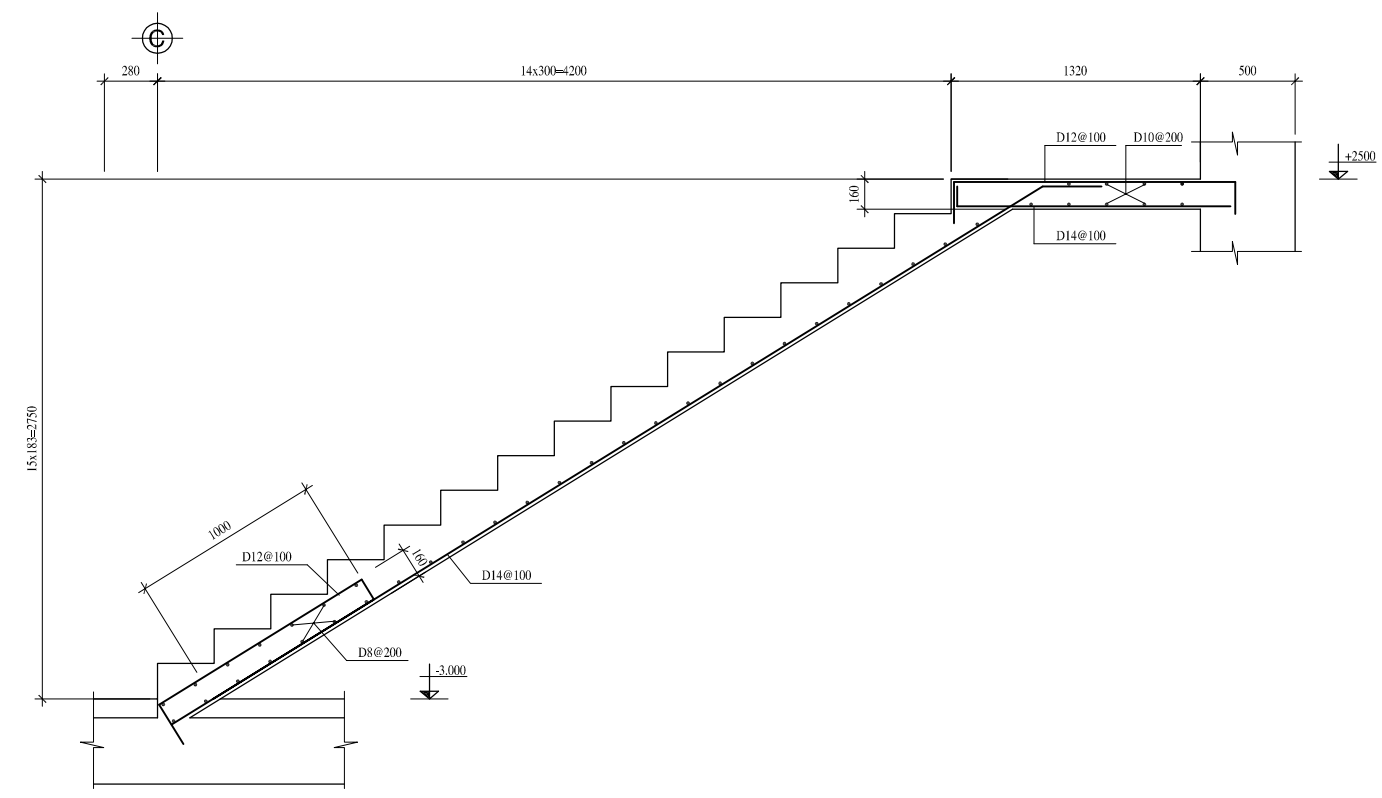
MAIN BUILDING BAR ARRANGEMENT (6)



SECTION 2-2 Scale:1/50

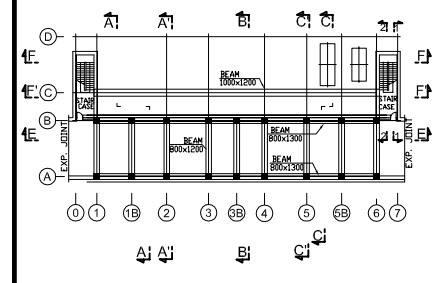


DETAIL OF STEPS Scale:1/10



SECTION 2-2 Scale:1/50

KEY PLAN



NOTES :

- ALL DIMENSIONS ARE MM UNLESS STATED OTHERWISE
- CONCRETE E21
- LEVELLING CONCRETE G10
- ALL REINFORCEMENT BARS ARE DEFORMED TYPE (CT5 OR EQUIVALENT AS INDICATED IN SPECIFICATION OF PACKAGE E)
- THE SPECIFICATION TO BE REFERRED FOR MORE INFORMATION OF MATERIAL GRADES

NO.	DATE	DESCRIPTIONS	BY	APRO.
REVISIONS				
PROJECT MANAGEMENT UNIT FOR HO CHI MINH CITY WATER ENVIRONMENT IMPROVEMENT				
THE DETAILED DESIGN STUDY ON HO CHI MINH CITY WATER ENVIRONMENT IMPROVEMENT PROJECT IN THE SOCIALIST REPUBLIC OF VIET NAM				
PACKAGE E WASTEWATER TREATMENT PLANT MAIN BUILDING BAR ARRANGEMENT (No. 6)				
SCALE : 1/10, 1/50				
JAPAN INTERNATIONAL COOPERATION AGENCY (JICA)				
PACIFIC CONSULTANTS INTERNATIONAL				
DESIGNED KIMURA TORU		CHECKED KONDO MASAMI		
DATE : JUNE 2001		DWG. No. PE-WWTP-273-08		

NO. DATE DESCRIPTIONS BY APRO.

REVISIONS

PROJECT MANAGEMENT UNIT FOR
HO CHI MINH CITY
WATER ENVIRONMENT IMPROVEMENT

THE DETAILED DESIGN STUDY ON HO CHI MINH CITY
WATER ENVIRONMENT IMPROVEMENT PROJECT
IN THE SOCIALIST REPUBLIC OF VIET NAM

PACKAGE E
WASTEWATER TREATMENT PLANT
MAIN BUILDING BAR ARRANGEMENT
(No. 6)

SCALE : 1/10, 1/50

JAPAN INTERNATIONAL COOPERATION AGENCY (JICA)

PACIFIC CONSULTANTS INTERNATIONAL

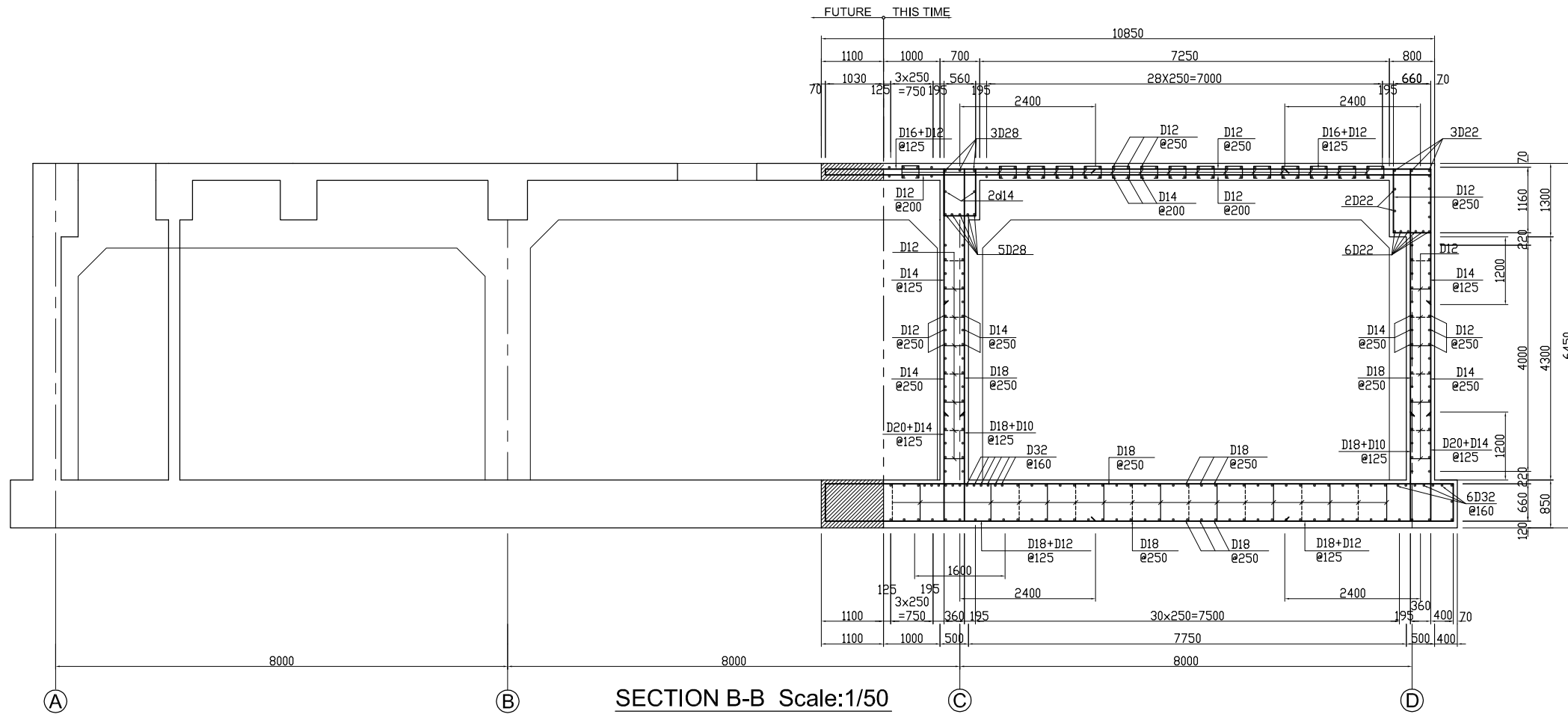
DESIGNED
KIMURA TORU

CHECKED
KONDO MASAMI

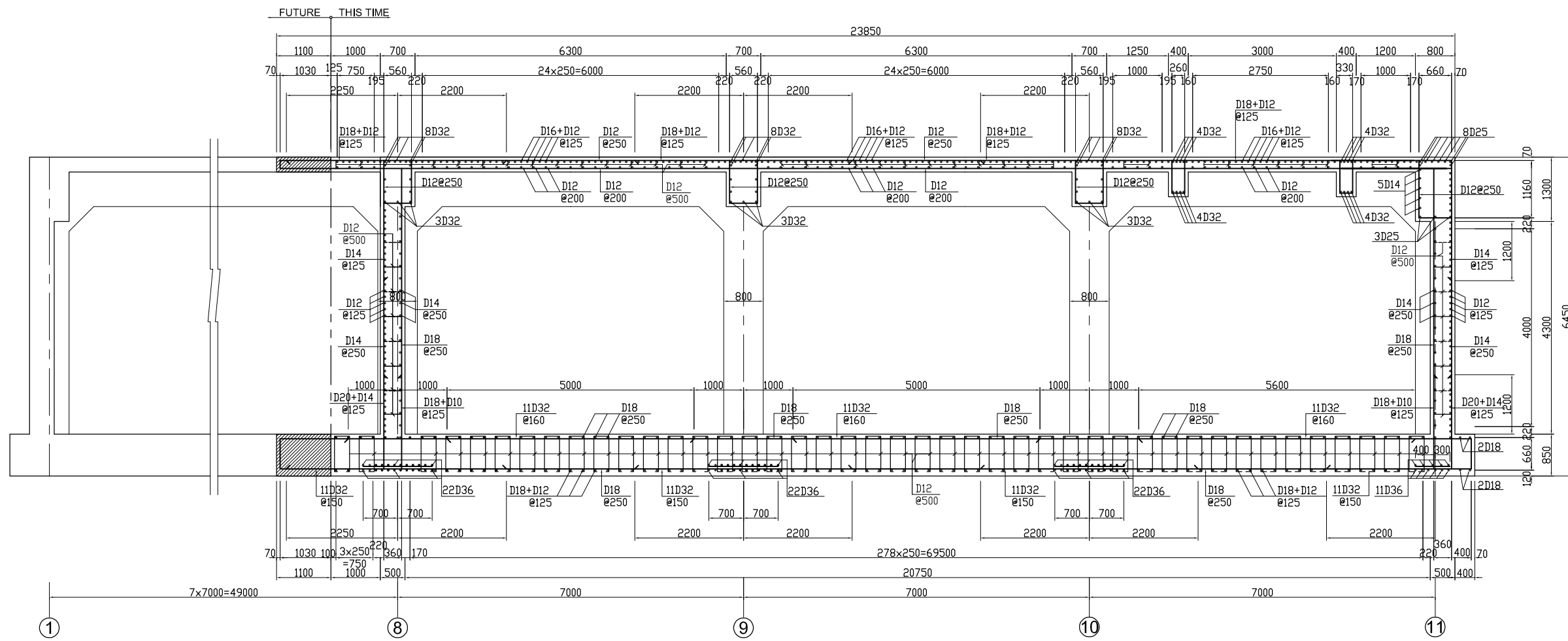
DATE : JUNE 2001

DWG. No. PE-WWTP-273-08

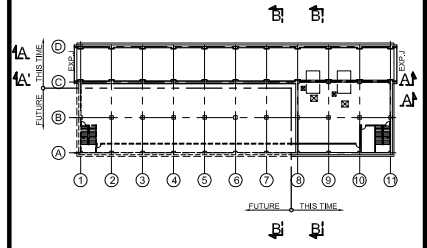
BLOWER BUILDING BAR ARRANGEMENT (1)



SECTION B-B Scale:1/50



SECTION A' - A' Scale:1/50



KEY PLAN

NOTES :

- ALL DIMENSIONS ARE MM UNLESS STATED OTHERWISE
- CONCRETE C21
- LEVELLING CONCRETE C10
- REINFORCEMENT (TENSILE STRENGTH FOR DESIGN ONLY): 1600kg/cm²
- THE SPECIFICATION TO BE REFERRED FOR MORE INFORMATION OF MATERIAL GRADES

DATE	DESCRIPTIONS	BY	APRO.
REVISIONS			
PROJECT MANAGEMENT UNIT FOR WATER ENVIRONMENT IMPROVEMENT FOR HO CHI MINH CITY			
THE DETAILED DESIGN ON HO CHI MINH CITY WATER ENVIRONMENT IMPROVEMENT PROJECT IN THE SOCIALIST REPUBLIC OF VIET NAM			
PACKAGE E WASTEWATER TREATMENT PLANT BLOWER BUILDING BAR ARRANGEMENT (No. 1)			
SCALE : 1/50			
JICA JAPAN INTERNATIONAL COOPERATION AGENCY (JICA)			
PACIFIC CONSULTANTS INTERNATIONAL			
DESIGNED KIMURA TORU	CHECKED KONDO MASAMI		
DATE : JUNE 2001	DWG. No. PE - WWTP - 274 - 02		