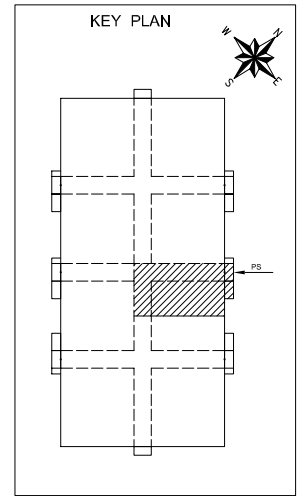
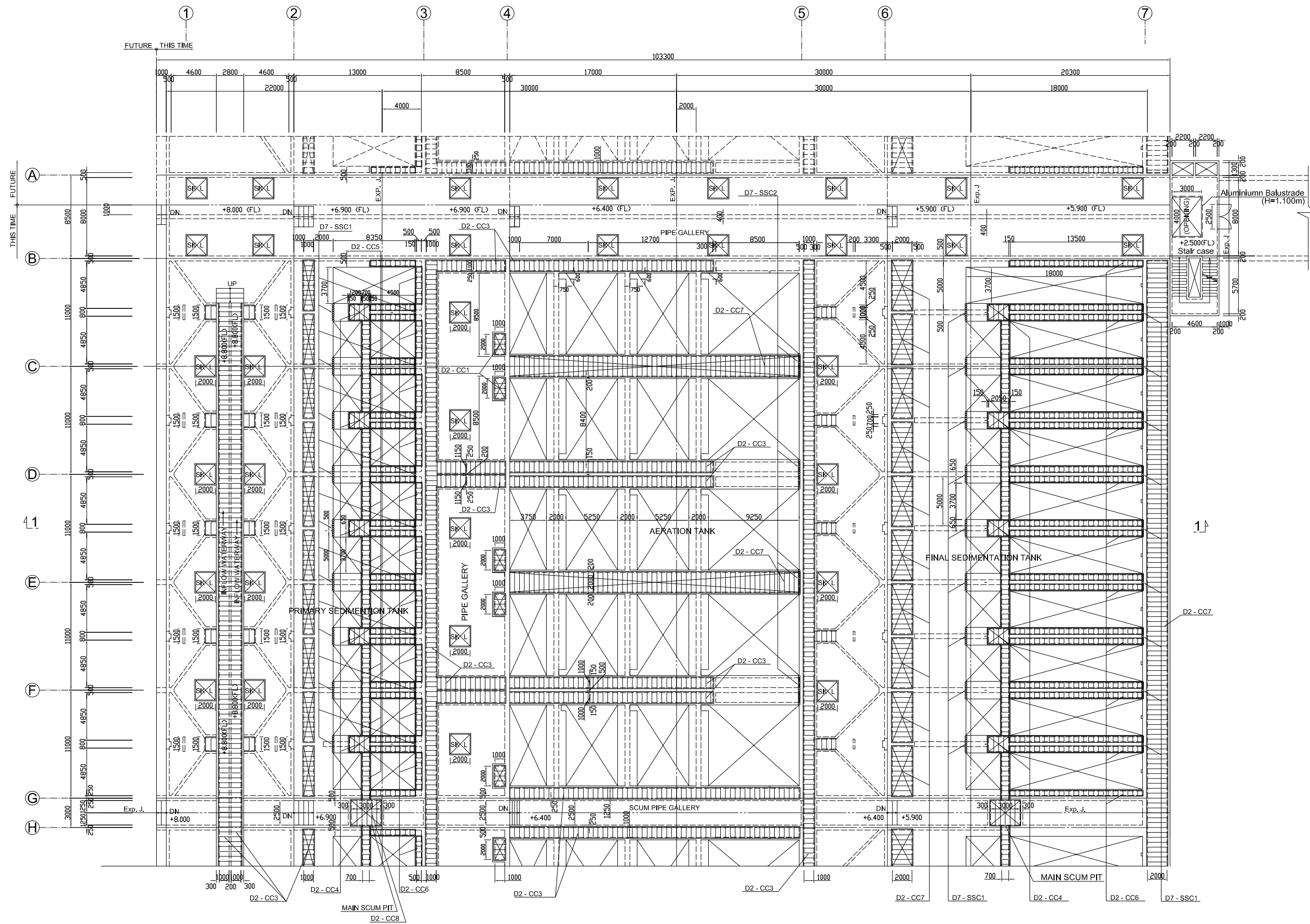


# STEEL CHAIN AND CONCRETE COVER OF KEY PLAN (No. 3 - 1) Scale: 1/200



## NOTES :

- ALL DIMENSIONS ARE MM UNLESS STATED OTHERWISE
- THE SPECIFICATION TO BE REFERRED FOR MORE INFORMATION OF MATERIAL GRADES

- OPEN AREA
- SKY LIGHT
- CONCRETE COVER

NO.	DATE	DESCRIPTIONS	BY	APRO.

### REVISIONS

PROJECT MANAGEMENT UNIT FOR  
HO CHI MINH CITY  
WATER ENVIRONMENT IMPROVEMENT

THE DETAILED DESIGN STUDY ON HO CHI MINH CITY  
WATER ENVIRONMENT IMPROVEMENT PROJECT  
IN THE SOCIALIST REPUBLIC OF VIET NAM

PACKAGE E  
WASTEWATER TREATMENT PLANT

WASTEWATER TREATMENT PLANT  
STEEL CHAIN AND CONCRETE COVER  
OF KEY PLAN (No. 3 - 1)

SCALE: 1 / 200

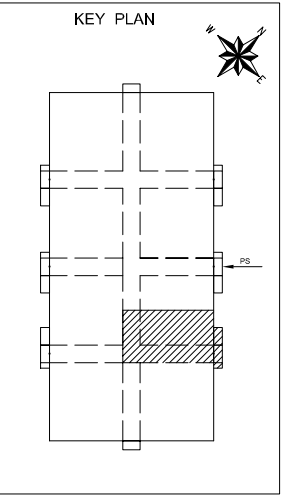
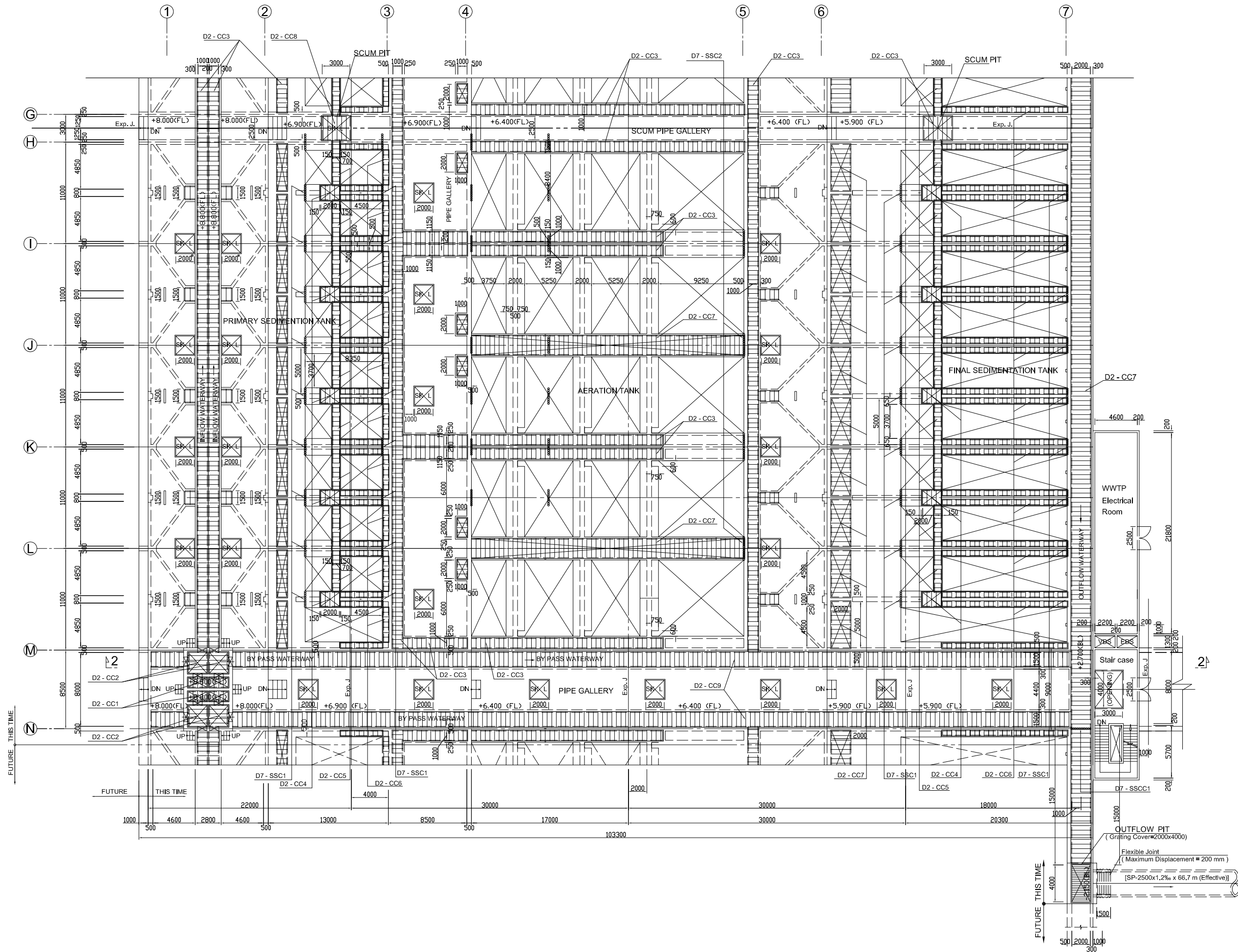
JAPAN INTERNATIONAL COOPERATION  
AGENCY ( JICA )

PACIFIC CONSULTANTS INTERNATIONAL

DESIGNED KIMURA TORU	CHECKED KONDO MASAMI
-------------------------	-------------------------

DATE : JUNE 2001      DWG. No. PE - WWTP - 229 - 09

# STEEL CHAIN AND CONCRETE COVER OF KEY PLAN (No. 3 - 2) Scale: 1/200



## NOTES :

- ALL DIMENSIONS ARE MM UNLESS STATED OTHERWISE
- THE SPECIFICATION TO BE REFERRED FOR MORE INFORMATION OF MATERIAL GRADES

- OPEN AREA
- SKY LIGHT
- COVER

NO.	DATE	DESCRIPTIONS	BY	APRO.

### REVISIONS

PROJECT MANAGEMENT UNIT FOR  
HO CHI MINH CITY  
WATER ENVIRONMENT IMPROVEMENT

THE DETAILED DESIGN STUDY ON HO CHI MINH CITY  
WATER ENVIRONMENT IMPROVEMENT PROJECT  
IN THE SOCIALIST REPUBLIC OF VIET NAM

PACKAGE E  
WASTEWATER TREATMENT PLANT

WASTEWATER TREATMENT PLANT  
STEEL CHAIN AND CONCRETE COVER  
OF KEY PLAN (No. 3 - 2)

SCALE: 1 / 200

JAPAN INTERNATIONAL COOPERATION AGENCY ( JICA )

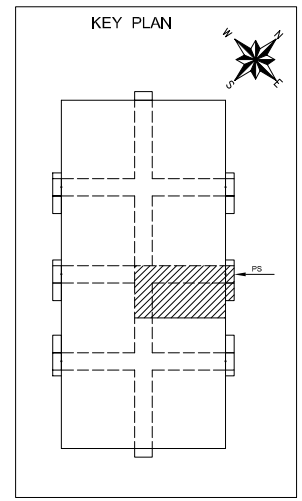
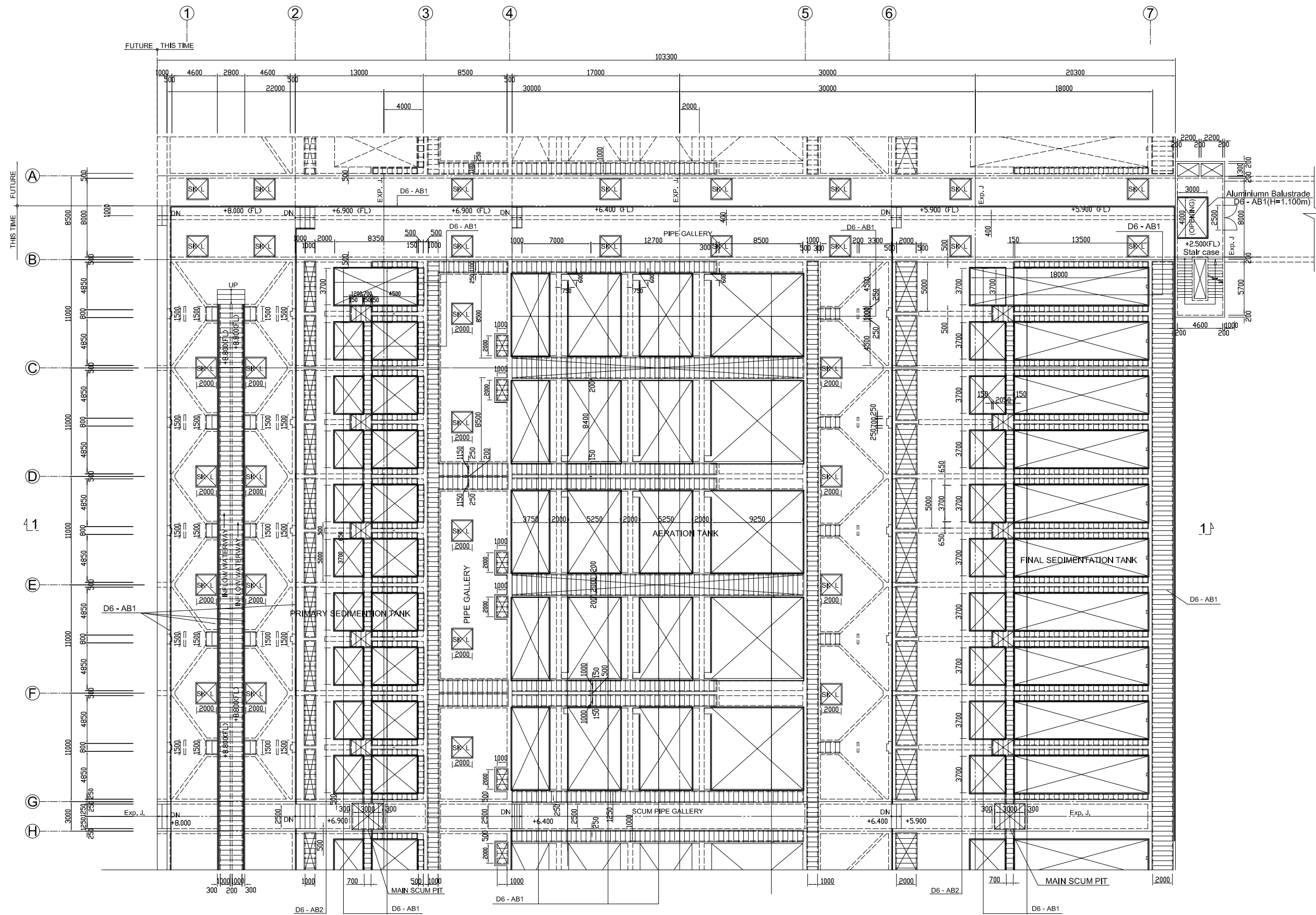
PACIFIC CONSULTANTS INTERNATIONAL

DESIGNED  
KIMURA TORU

CHECKED  
KONDO MASAMI

DATE : JUNE 2001      DWG. No. PE - WWTP - 229 - 10

# STEEL BALUSTRADE OF KEY PLAN (No. 3 - 1) Scale: 1/200



## NOTES :

- ALL DIMENSIONS ARE MM UNLESS STATED OTHERWISE
- CONCRETE E21
- LEVELLING CONCRETE G10
- ALL REINFORCEMENT BARS ARE DEFORMED TYPE (CT5 OR EQUIVALENT AS INDICATED IN SPECIFICATION OF PACKAGE E)
- THE SPECIFICATION TO BE REFERRED FOR MORE INFORMATION OF MATERIAL GRADES

- OPEN AREA
- SKY LIGHT
- COVER

NO.	DATE	DESCRIPTIONS	BY	APRO.

REVISIONS

PROJECT MANAGEMENT UNIT FOR  
HO CHI MINH CITY  
WATER ENVIRONMENT IMPROVEMENT

THE DETAILED DESIGN STUDY ON HO CHI MINH CITY  
WATER ENVIRONMENT IMPROVEMENT PROJECT  
IN THE SOCIALIST REPUBLIC OF VIET NAM

PACKAGE E  
WASTEWATER TREATMENT PLANT

WASTEWATER TREATMENT PLANT  
STEEL BALUSTRADE  
OF KEY PLAN (No. 3 - 1)

SCALE: 1 / 200

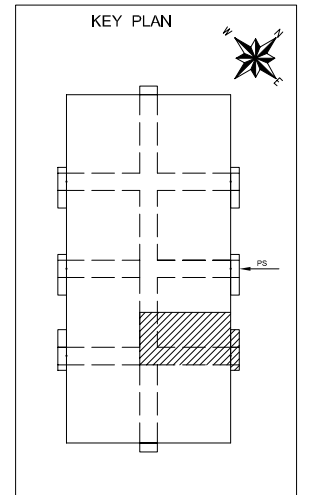
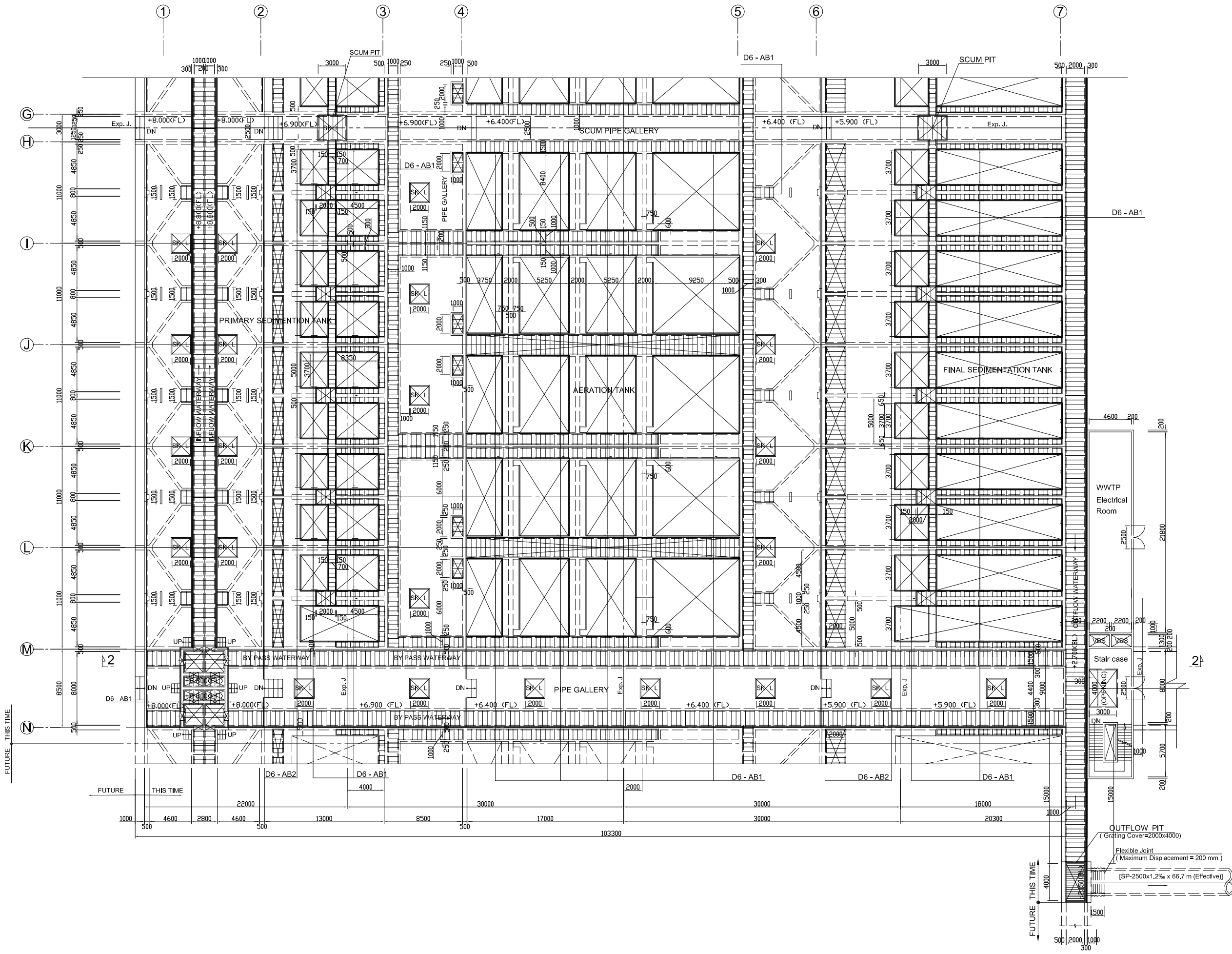
JAPAN INTERNATIONAL COOPERATION AGENCY ( JICA )

PACIFIC CONSULTANTS INTERNATIONAL

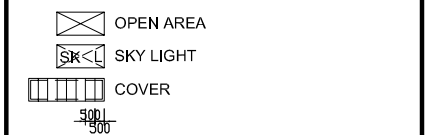
DESIGNED KIMURA TORU	CHECKED KONDO MASAMI
-------------------------	-------------------------

DATE : JUNE 2001	DWG. No. PE - WWTP - 229 - 11
------------------	-------------------------------

# STEEL BALUSTRADE OF KEY PLAN (No. 3 - 2) Scale: 1/200



- NOTES :**
- ALL DIMENSIONS ARE MM UNLESS STATED OTHERWISE
  - CONCRETE E21
  - LEVELLING CONCRETE G10
  - ALL REINFORCEMENT BARS ARE DEFORMED TYPE (CT5 OR EQUIVALENT AS INDICATED IN SPECIFICATION OF PACKAGE E)
  - THE SPECIFICATION TO BE REFERRED FOR MORE INFORMATION OF MATERIAL GRADES



NO.	DATE	DESCRIPTIONS	BY	APRO.

REVISIONS

PROJECT MANAGEMENT UNIT FOR  
HO CHI MINH CITY  
WATER ENVIRONMENT IMPROVEMENT

THE DETAILED DESIGN STUDY ON HO CHI MINH CITY  
WATER ENVIRONMENT IMPROVEMENT PROJECT  
IN THE SOCIALIST REPUBLIC OF VIET NAM

PACKAGE E  
WASTEWATER TREATMENT PLANT

WASTEWATER TREATMENT PLANT  
STEEL BALUSTRADE  
OF KEY PLAN (No. 3 - 2)

SCALE: 1 / 200

JICA JAPAN INTERNATIONAL COOPERATION AGENCY ( JICA )

PACIFIC CONSULTANTS INTERNATIONAL

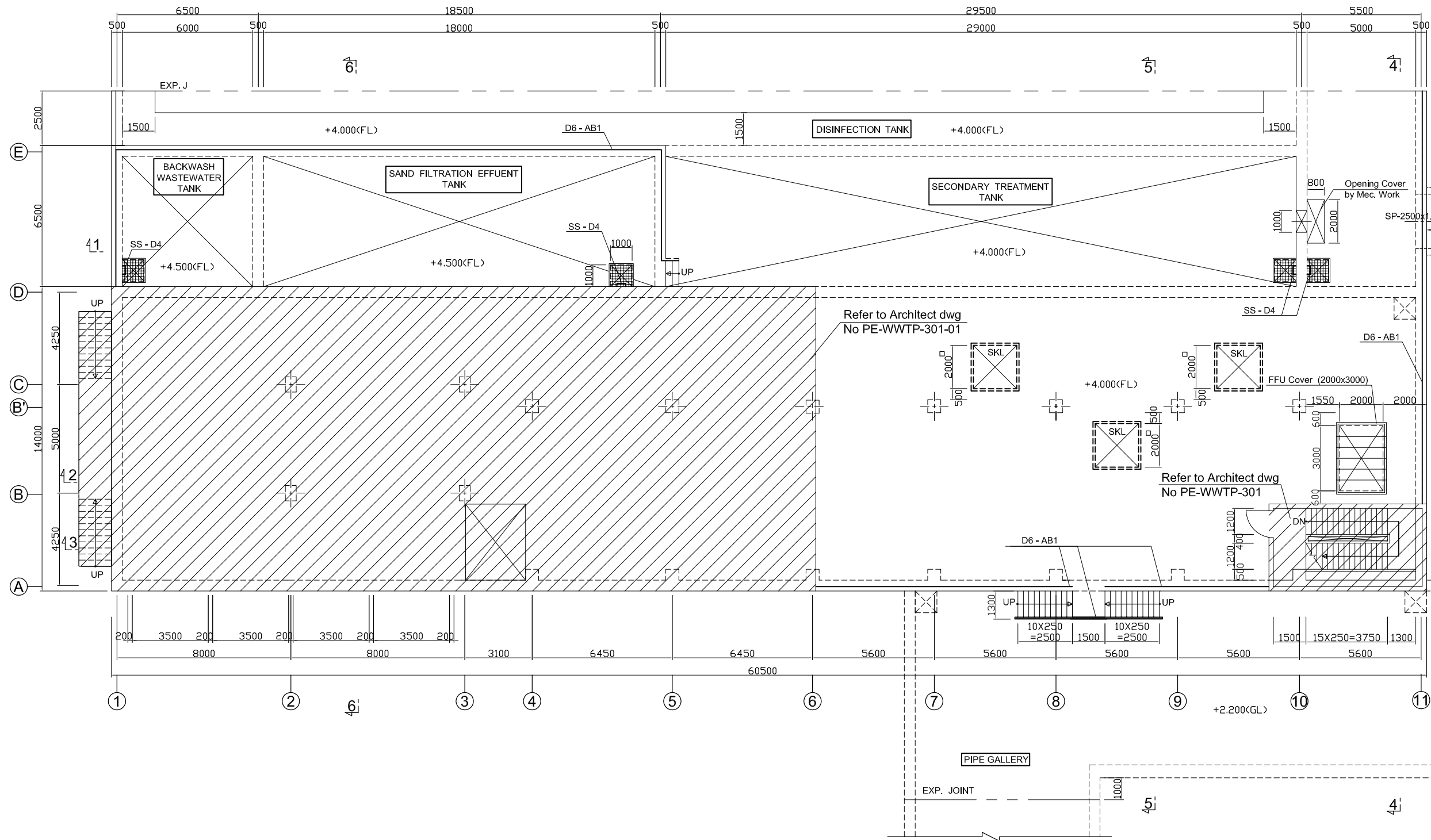
DESIGNED  
KIMURA TORU

CHECKED  
KONDO MASAMI

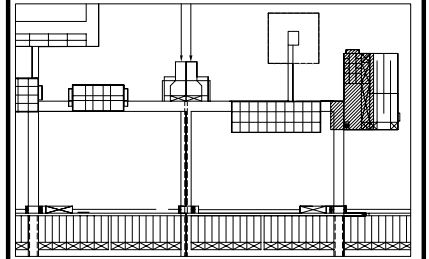
DATE : JUNE 2001

DWG. No. PE - WWTP - 229 - 12

**SKY LIGHT, STEEL CHAIN, STEEL STEP, AND STEEL BALUSTRADE  
OF WATER SUPPLY FACILITY KEY PLAN**    Scale: 1/100  
1st FLOOR PLAN



**KEY PLAN**



**NOTES :**

- ALL DIMENSIONS ARE MM UNLESS STATED OTHERWISE
- CONCRETE E21
- LEVELLING CONCRETE G10
- ALL REINFORCEMENT BARS ARE DEFORMED TYPE (CT5 OR EQUIVALENT AS INDICATED IN SPECIFICATION OF PACKAGE E)
- THE SPECIFICATION TO BE REFERRED FOR MORE INFORMATION OF MATERIAL GRADES

NO.	DATE	DESCRIPTIONS	BY	APRO.

**REVISIONS**

PROJECT MANAGEMENT UNIT FOR  
WATER ENVIRONMENT IMPROVEMENT FOR  
HO CHI MINH CITY

THE DETAILED DESIGN ON HO CHI MINH CITY  
WATER ENVIRONMENT IMPROVEMENT PROJECT  
IN THE SOCIALIST REPUBLIC OF VIET NAM

PACKAGE E  
WASTEWATER TREATMENT PLANT

**STEEL CHAIN, STEEL STEP,  
SKY LIGHT, STEEL BALUSTRADE  
OF WATER SUPPLY FACILITY  
OF KEY PLAN**

SCALE: 1/100

JICA JAPAN INTERNATIONAL COOPERATION  
AGENCY ( JICA )

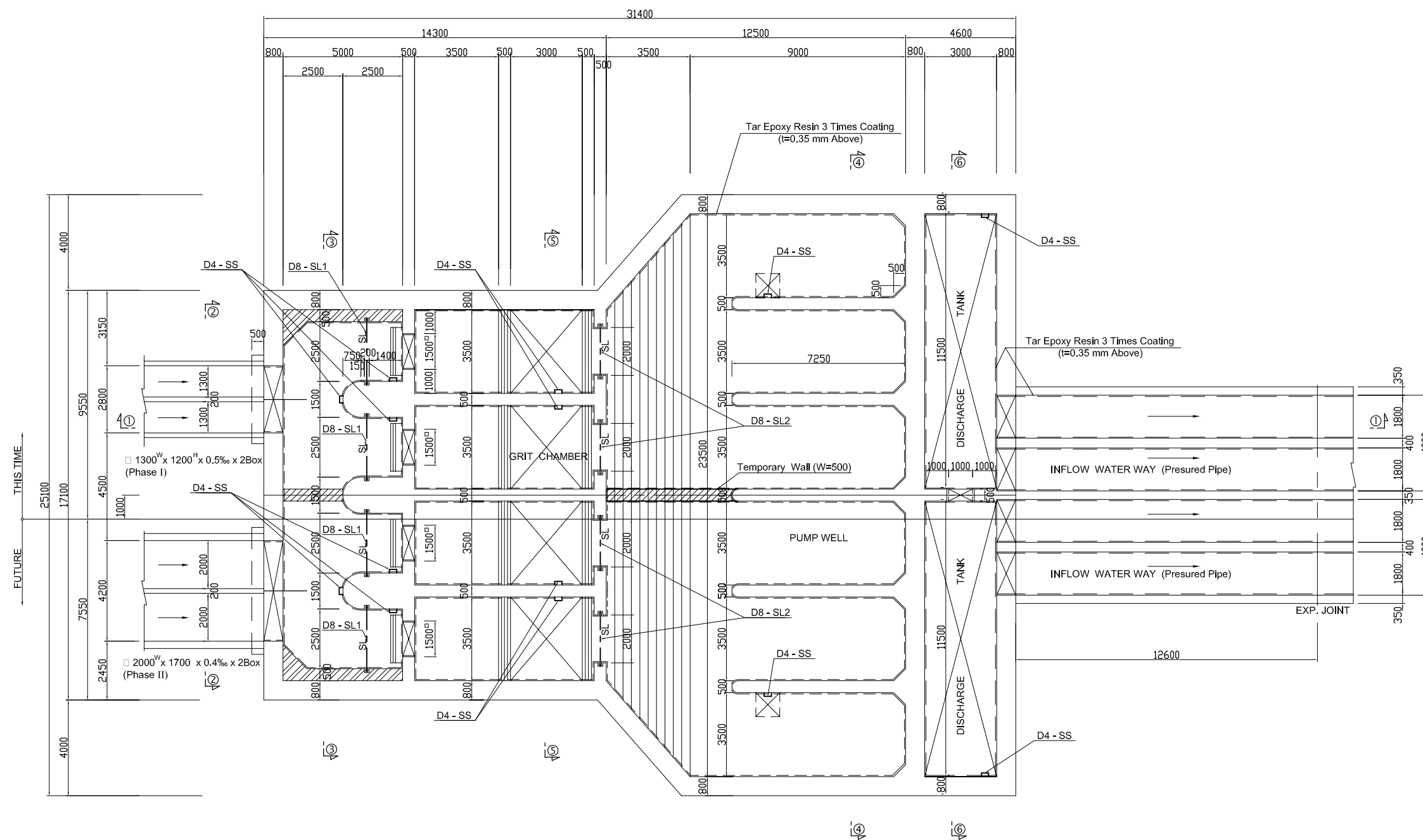
PACIFIC CONSULTANTS INTERNATIONAL

DESIGNED KIMURA TORU	CHECKED KONDO MASAMI
-------------------------	-------------------------

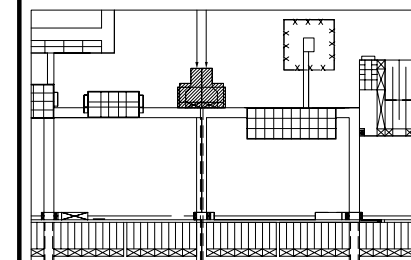
DATE : JUNE 2001    DWG. No. PE - WWTP - 229 - 13

# STOP LOG AND STEEL STEP OF LIFT PUMPING STATION KEY PLAN

WATERWAY FLOOR PLAN Scale: 1/100



## KEY PLAN



### NOTES :

- ALL DIMENSIONS ARE MM UNLESS STATED OTHERWISE
- CONCRETE E21
- LEVELLING CONCRETE G10
- ALL REINFORCEMENT BARS ARE DEFORMED TYPE (CT5 OR EQUIVALENT AS INDICATED IN SPECIFICATION OF PACKAGE E)
- THE SPECIFICATION TO BE REFERRED FOR MORE INFORMATION OF MATERIAL GRADES

DATE	DESCRIPTIONS	BY	APRO.

### REVISIONS

PROJECT MANAGEMENT UNIT FOR  
WATER ENVIRONMENT IMPROVEMENT FOR  
HO CHI MINH CITY

THE DETAILED DESIGN ON HO CHI MINH CITY  
WATER ENVIRONMENT IMPROVEMENT PROJECT  
IN THE SOCIALIST REPUBLIC OF VIET NAM

PACKAGE E  
WASTEWATER TREATMENT PLANT

STOP LOG AND STEEL STEP OF  
LIFT PUMPING STATION KEY PLAN

SCALE : 1/100

JICA JAPAN INTERNATIONAL COOPERATION  
AGENCY ( JICA )

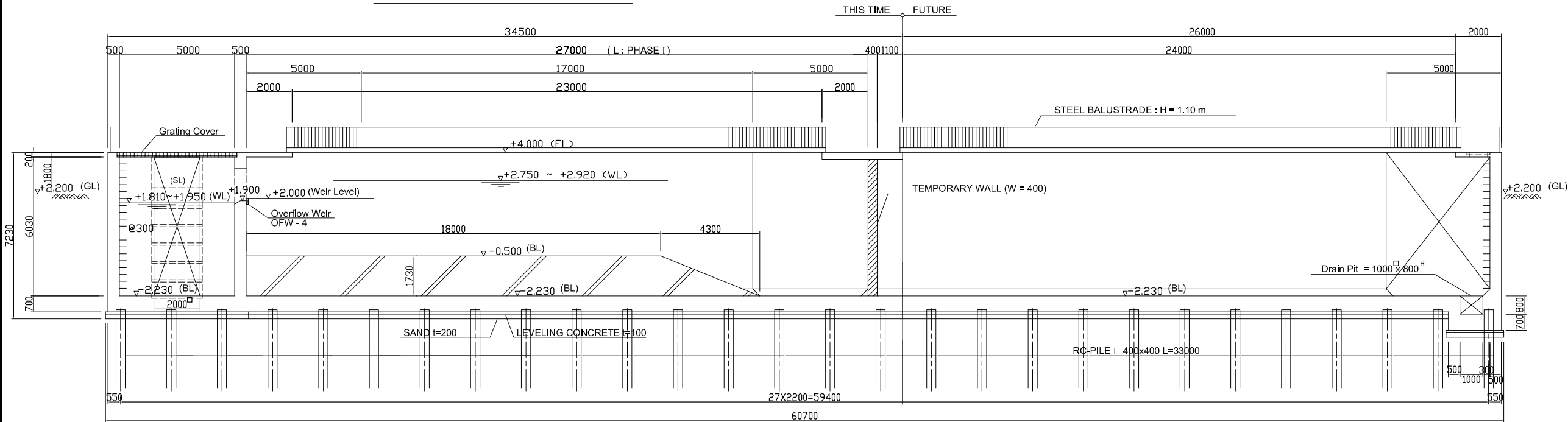
PACIFIC CONSULTANTS INTERNATIONAL

DESIGNED KIMURA TORU	CHECKED KONDO MASAMI
-------------------------	-------------------------

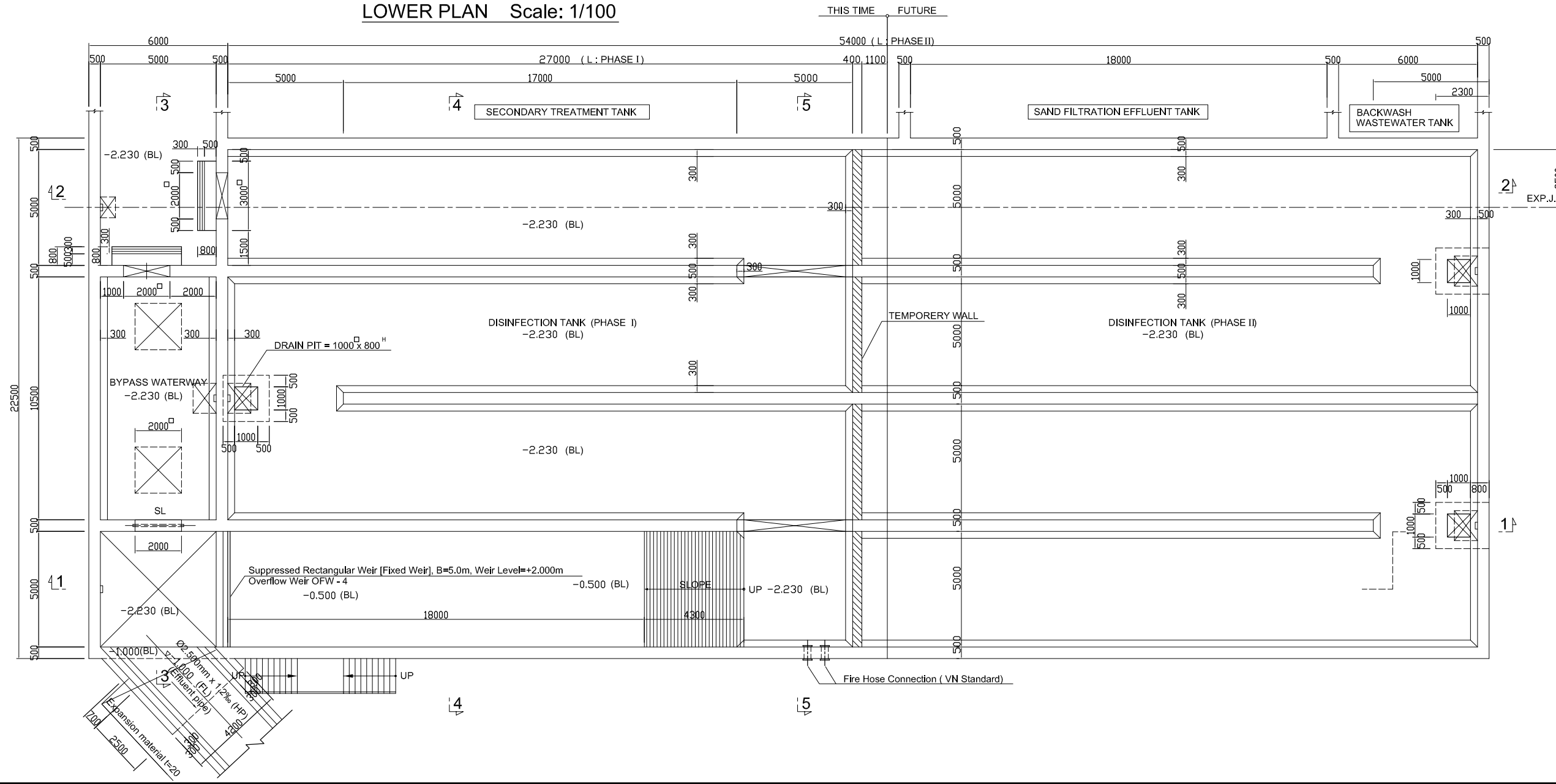
DATE : JUNE 2001 DWG. No. PE - WWTP - 229 - 14

# OVERFLOW WEIR OF DISINFECTION TANK KEY PLAN and SECTION

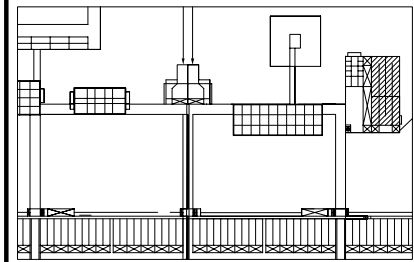
## SECTION 1 - 1 Scale: 1/100



## LOWER PLAN Scale: 1/100



## KEY PLAN



### NOTES :

- ALL DIMENSIONS ARE MM UNLESS STATED OTHERWISE
- CONCRETE E21
- LEVELLING CONCRETE G10
- ALL REINFORCEMENT BARS ARE DEFORMED TYPE (CT5 OR EQUIVALENT AS INDICATED IN SPECIFICATION OF PACKAGE E)
- THE SPECIFICATION TO BE REFERRED FOR MORE INFORMATION OF MATERIAL GRADES
- PILE LOCATION SHOWN ON PILE ARRANGEMENT DWG. No. PE - WWTP - 254 - 01
- DETAILS OF R.C PILE SHOWN ON DWG. No. PE - WWTP - 265 - 01

NO.	DATE	DESCRIPTIONS	BY	APRO.

REVISIONS

PROJECT MANAGEMENT UNIT FOR  
HO CHI MINH CITY  
WATER ENVIRONMENT IMPROVEMENT

THE DETAILED DESIGN STUDY ON HO CHI MINH CITY  
WATER ENVIRONMENT IMPROVEMENT PROJECT  
IN THE SOCIALIST REPUBLIC OF VIET NAM

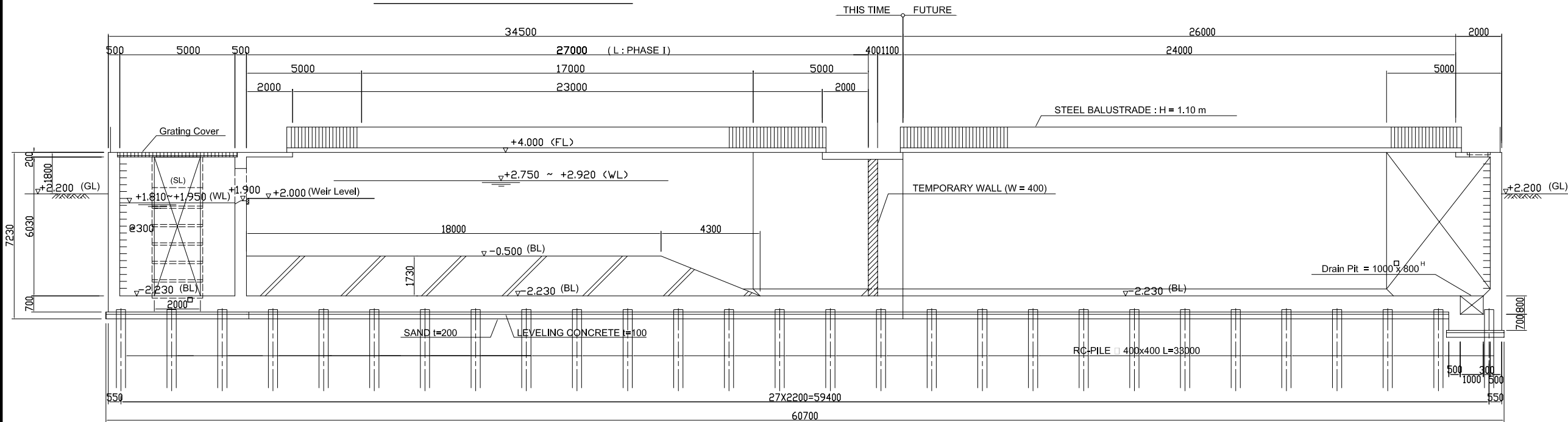
PACKAGE E  
WASTEWATER TREATMENT PLANT

**OVERFLOW WEIR OF  
DISINFECTION TANK  
KEY PLAN and SECTION**

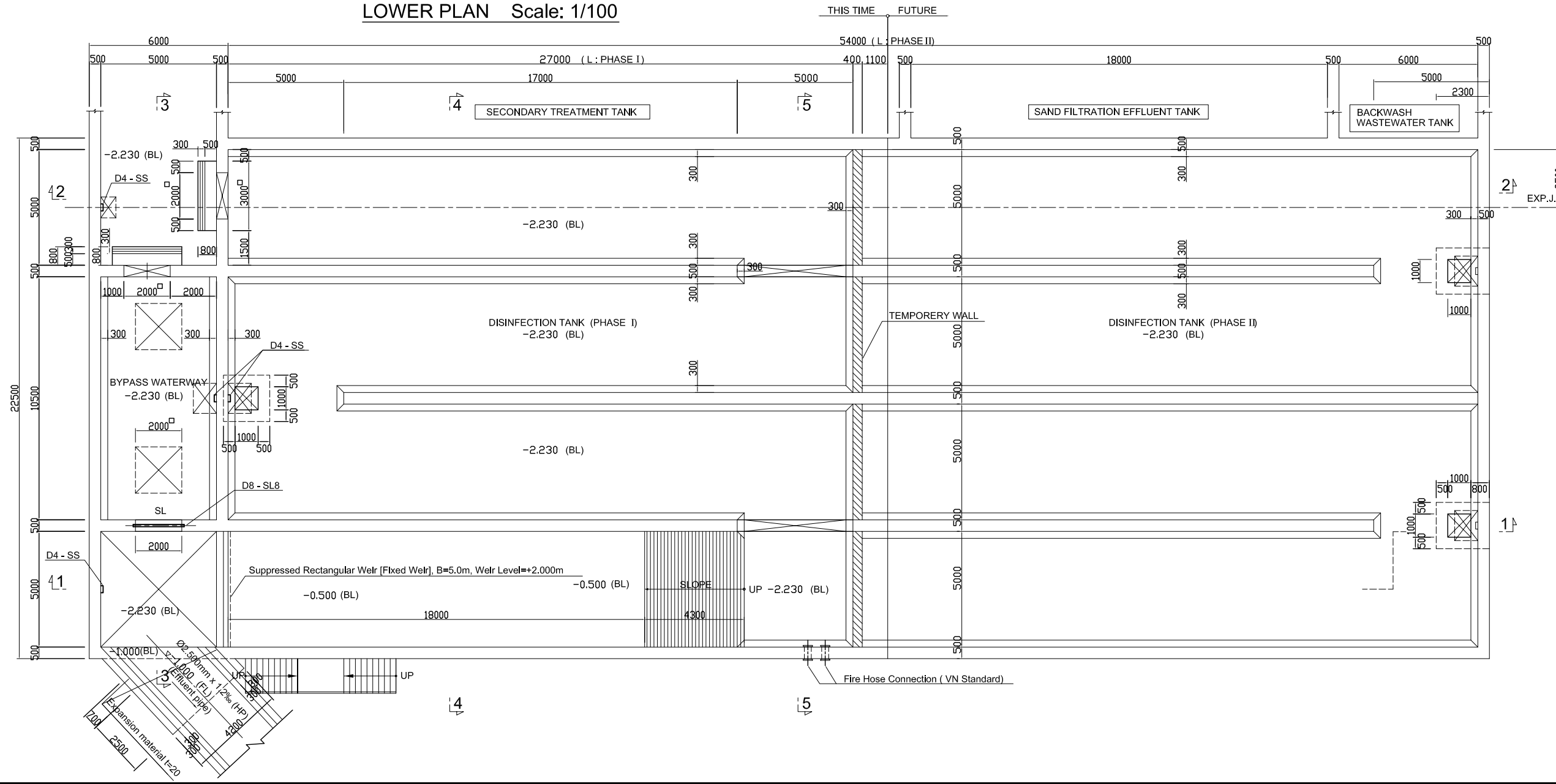
SCALE: 1 / 100	
JAPAN INTERNATIONAL COOPERATION AGENCY ( JICA )	
PACIFIC CONSULTANTS INTERNATIONAL	
DESIGNED KIMURA TORU	CHECKED KONDO MASAMI
DATE : JUNE 2001	DWG. No. PE - WWTP - 229 - 15

# STOP LOG AND STEEL STEP OF DISINFECTION TANK KEY PLAN and SECTION

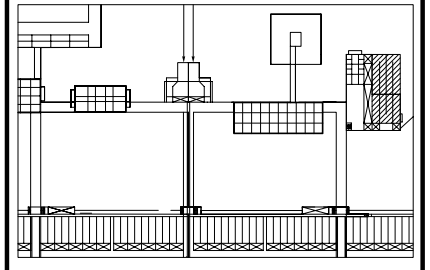
SECTION 1 - 1 Scale: 1/100



LOWER PLAN Scale: 1/100



KEY PLAN



**NOTES :**

- ALL DIMENSIONS ARE MM UNLESS STATED OTHERWISE
- CONCRETE E21
- LEVELLING CONCRETE G10
- ALL REINFORCEMENT BARS ARE DEFORMED TYPE (CT5 OR EQUIVALENT AS INDICATED IN SPECIFICATION OF PACKAGE E)
- THE SPECIFICATION TO BE REFERRED FOR MORE INFORMATION OF MATERIAL GRADES
- PILE LOCATION SHOWN ON PILE ARRANGEMENT DWG. No. PE - WWTP - 254 - 01
- DETAILS OF R.C PILE SHOWN ON DWG. No. PE - WWTP - 265 - 01

NO.	DATE	DESCRIPTIONS	BY	APRO.
REVISIONS				

PROJECT MANAGEMENT UNIT FOR  
HO CHI MINH CITY  
WATER ENVIRONMENT IMPROVEMENT

THE DETAILED DESIGN STUDY ON HO CHI MINH CITY  
WATER ENVIRONMENT IMPROVEMENT PROJECT  
IN THE SOCIALIST REPUBLIC OF VIET NAM

PACKAGE E  
WASTEWATER TREATMENT PLANT

**STOP LOG AND STEEL STEP OF DISINFECTION TANK  
KEY PLAN and SECTION**

SCALE : 1/100

JAPAN INTERNATIONAL COOPERATION AGENCY ( JICA )

PACIFIC CONSULTANTS INTERNATIONAL

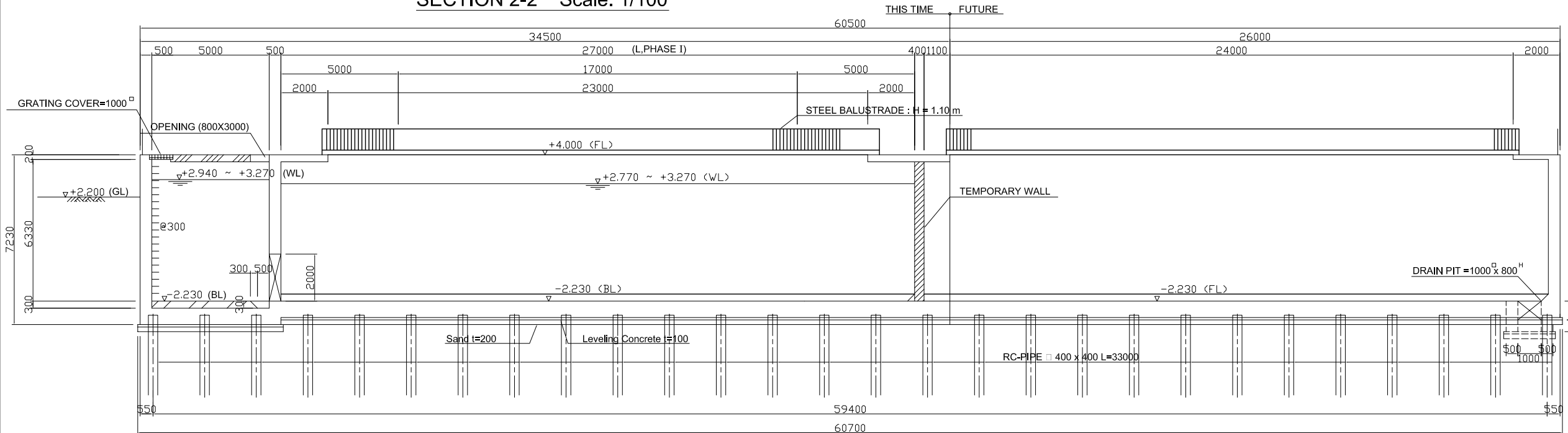
DESIGNED KIMURA TORU	CHECKED KONDO MASAMI
-------------------------	-------------------------

DATE : JUNE 2001      DWG. No. PE - WWTP - 229 - 16

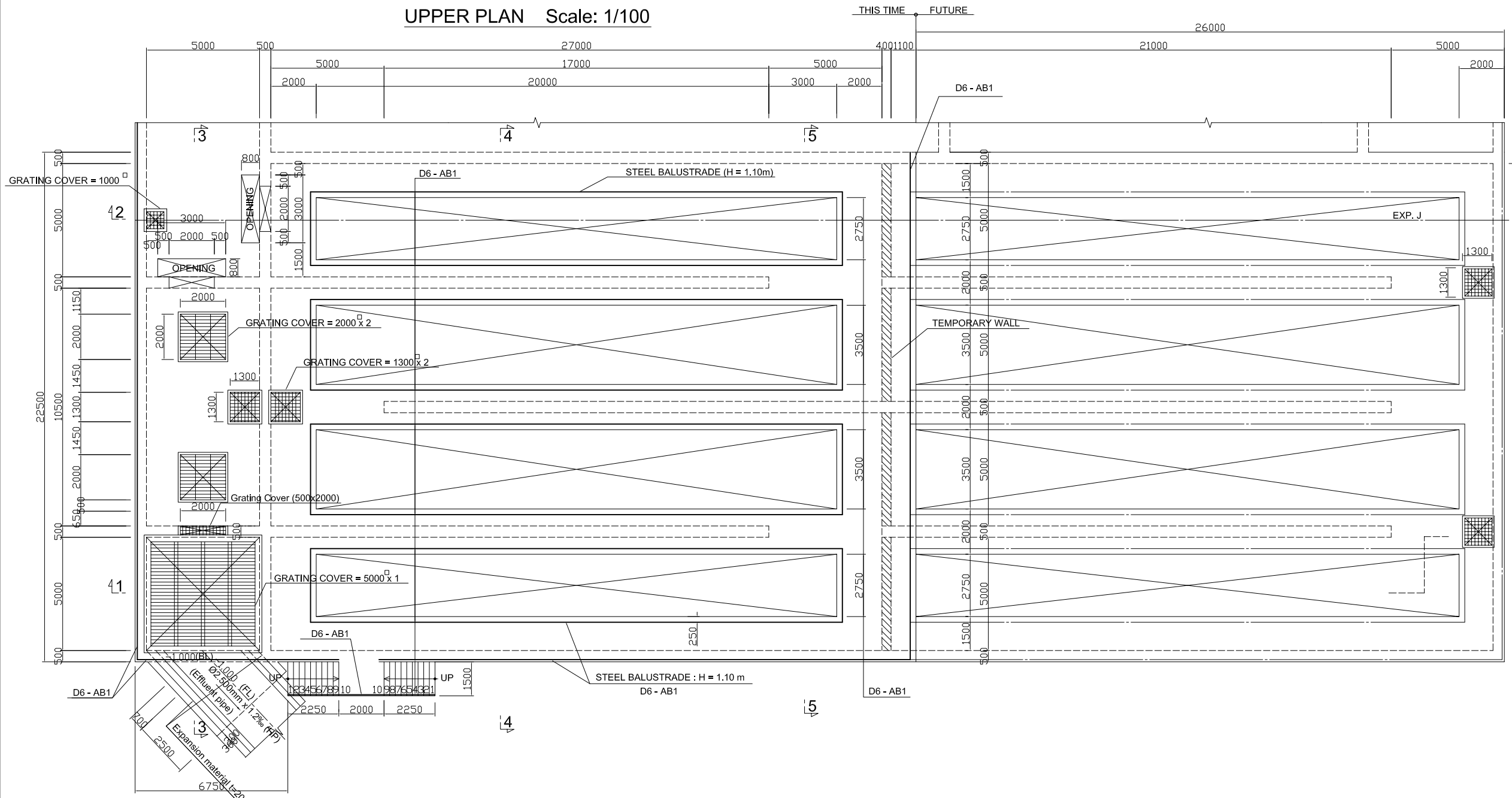


# STEEL CHAIN AND STEEL BALUSTRADE OF DISINFECTION TANK KEY PLAN and SECTION

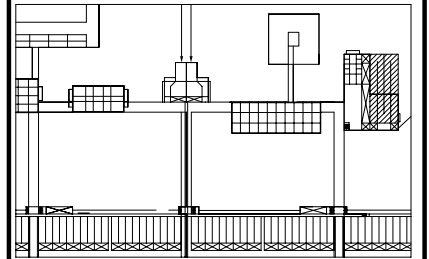
SECTION 2-2 Scale: 1/100



UPPER PLAN Scale: 1/100



## KEY PLAN



### NOTES :

- ALL DIMENSIONS ARE MM UNLESS STATED OTHERWISE
- CONCRETE E21
- LEVELLING CONCRETE G10
- ALL REINFORCEMENT BARS ARE DEFORMED TYPE (CT5 OR EQUIVALENT AS INDICATED IN SPECIFICATION OF PACKAGE E)
- THE SPECIFICATION TO BE REFERRED FOR MORE INFORMATION OF MATERIAL GRADES
- PILE LOCATION SHOWN ON PILE ARRANGEMENT DWG. No. PE - WWTP - 254 - 01
- DETAILS OF R.C PILE SHOWN ON DWG. No. PE - WWTP - 265 - 01

NO.	DATE	DESCRIPTIONS	BY	APRO.
-----	------	--------------	----	-------

#### REVISIONS

PROJECT MANAGEMENT UNIT FOR  
HO CHI MINH CITY  
WATER ENVIRONMENT IMPROVEMENT

THE DETAILED DESIGN STUDY ON HO CHI MINH CITY  
WATER ENVIRONMENT IMPROVEMENT PROJECT  
IN THE SOCIALIST REPUBLIC OF VIET NAM

PACKAGE E  
WASTEWATER TREATMENT PLANT  
**STEEL CHAIN AND STEEL BALUSTRADE  
DISINFECTION TANK  
KEY PLAN and SECTION**

SCALE: 1/100

JICA JAPAN INTERNATIONAL COOPERATION  
AGENCY (JICA)

PACIFIC CONSULTANTS INTERNATIONAL

DESIGNED  
KIMURA TORU

CHECKED  
KONDO MASAMI

DATE : JUNE 2001 DWG. No. PE - WWTP - 229 - 17