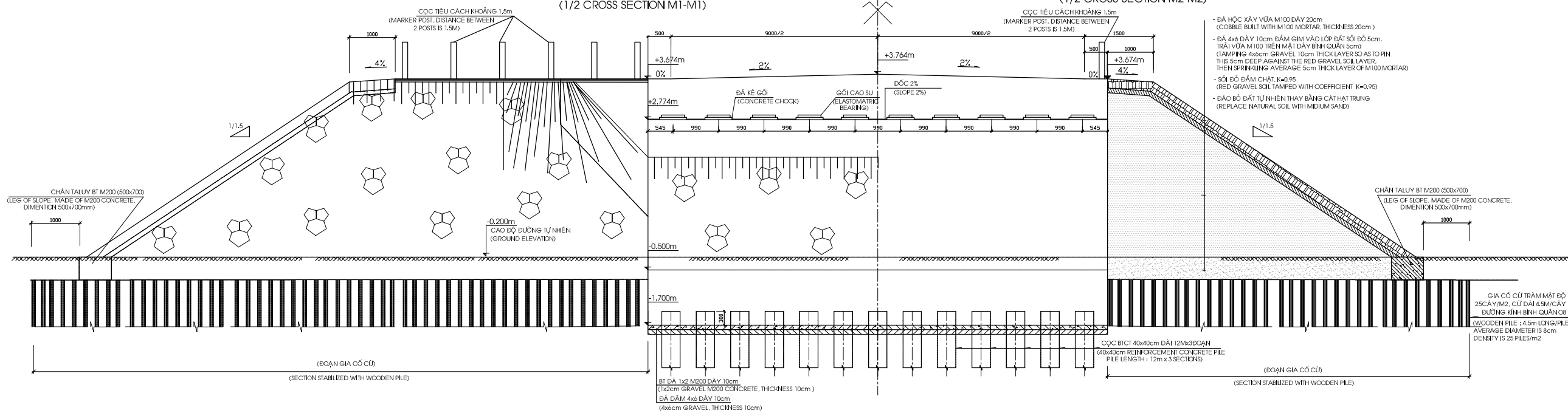


MỔ B (ABUTMENT B)

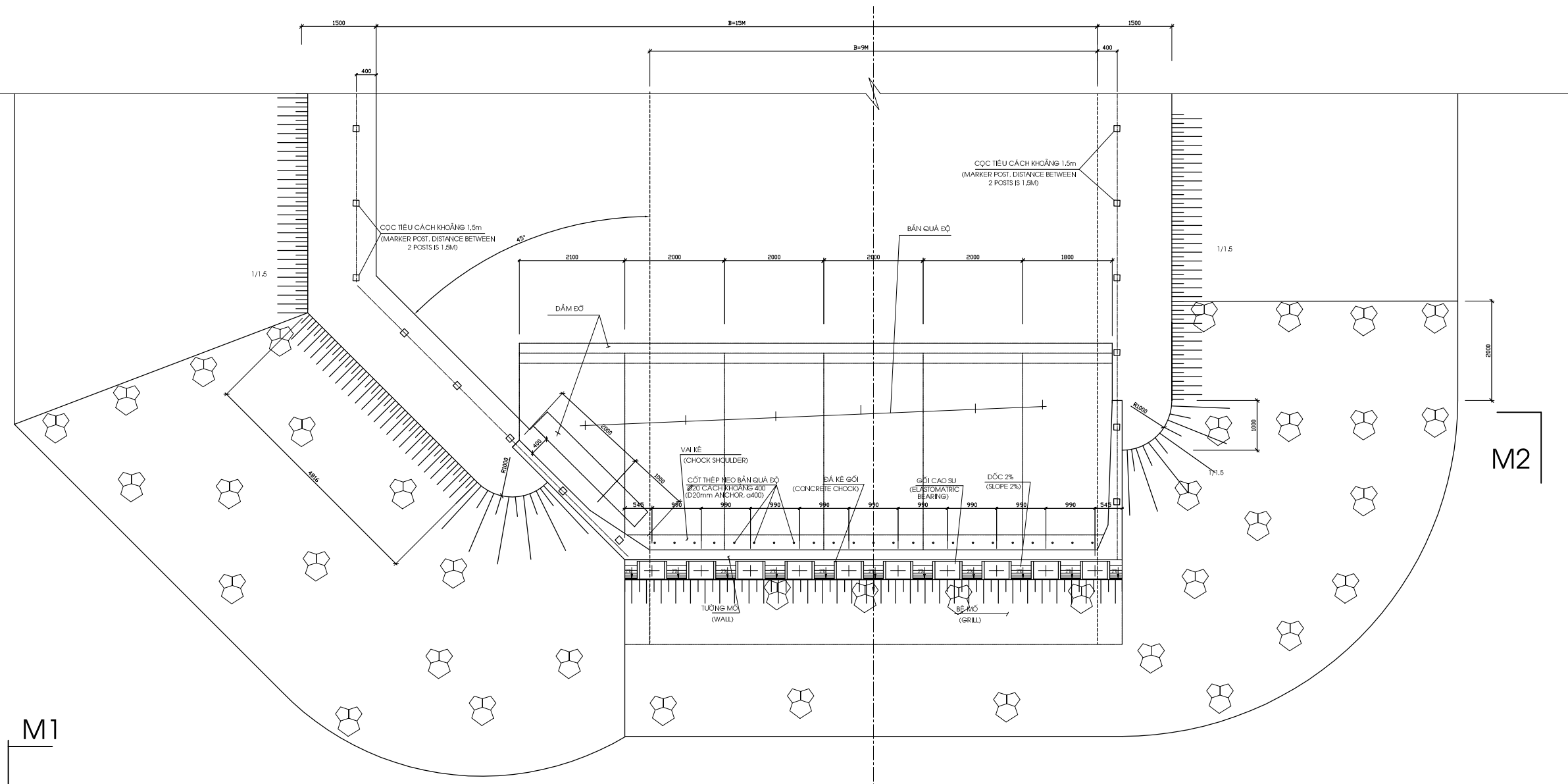
CHÍNH DIỆN MỔ (TL 1/50) FRONT SIDE (SCALE 1/50)

1/2 MẶT CẮT M1-M1 (1/2 CROSS SECTION M1-M1)

1/2 MẶT CẮT M2-M2 (1/2 CROSS SECTION M2-M2)



MẶT BẰNG CẤU TẠO MỔ B (TL 1/50) STRUCTURE PLAN ABUTMENT B (SCALE 1/50)



GHI CHÚ :

- MẶT BẰNG BỐ TRÍ CỌC GIỐNG NHƯ MỔ A
- ĐƠN VỊ DÙNG TRONG BẢN VẼ LÀ mm

FOOTNOTE :

- PILE LAYOUT PLAN IS SIMILAR TO THE ABUTMENT A
- THE UNIT USED IN THIS DRAWING IS MILLIMETRE

NO.	DATE	DESCRIPTIONS	BY	APRO.
REVISIONS				
PROJECT MANAGEMENT UNIT FOR HO CHI MINH CITY WATER ENVIRONMENT IMPROVEMENT				
THE DETAILED DESIGN ON HO CHI MINH CITY WATER ENVIRONMENT IMPROVEMENT PROJECT IN THE SOCIALIST REPUBLIC OF VIET NAM				
PACKAGE E WASTEWATER TREATMENT PLAN CẤU TẠO MỔ B STRUCTURE OF THE ABUTMENT B				
SCALE : AS SHOWN				
JAPAN INTERNATIONAL COOPERATION AGENCY (JICA)				
PACIFIC CONSULTANTS INTERNATIONAL				
DESIGNED KIMURA TORU		CHECKED KONDO MASAMI		
DATE : JUNE 2001		DWG.No.PE-WWTP-220-06		

MỔ A

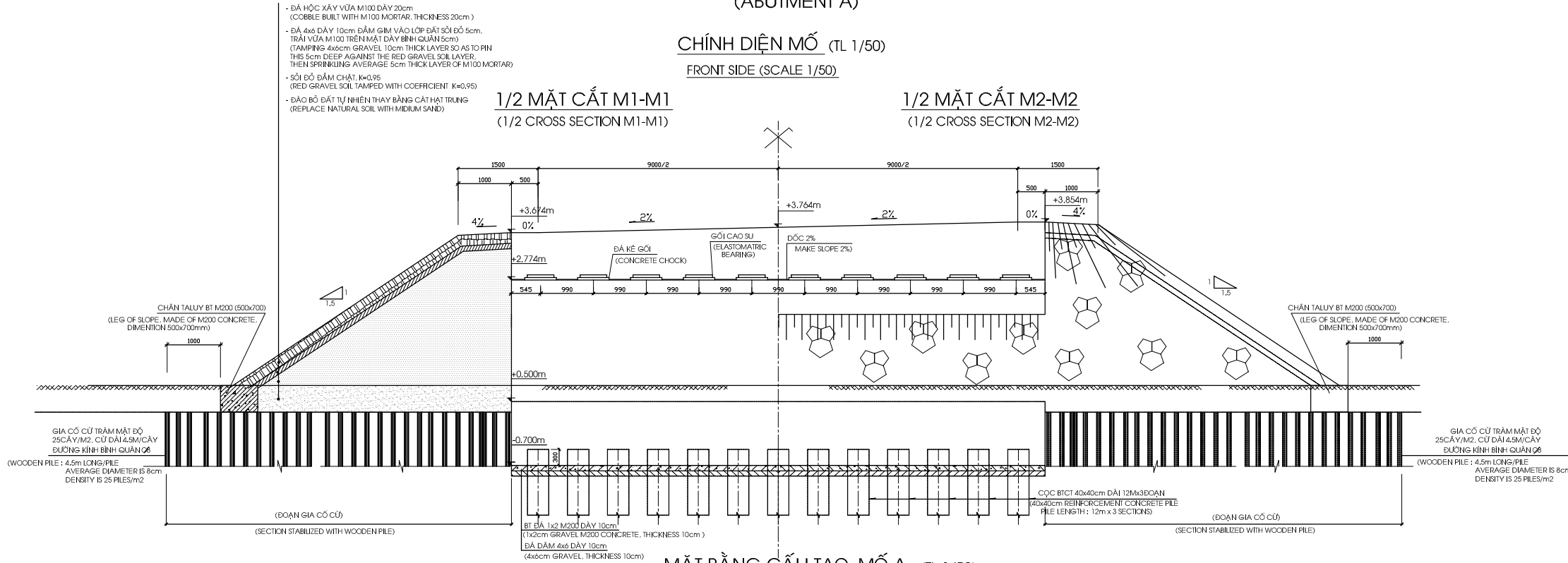
(ABUTMENT A)

CHÍNH DIỆN MỔ (TL 1/50)

FRONT SIDE (SCALE 1/50)

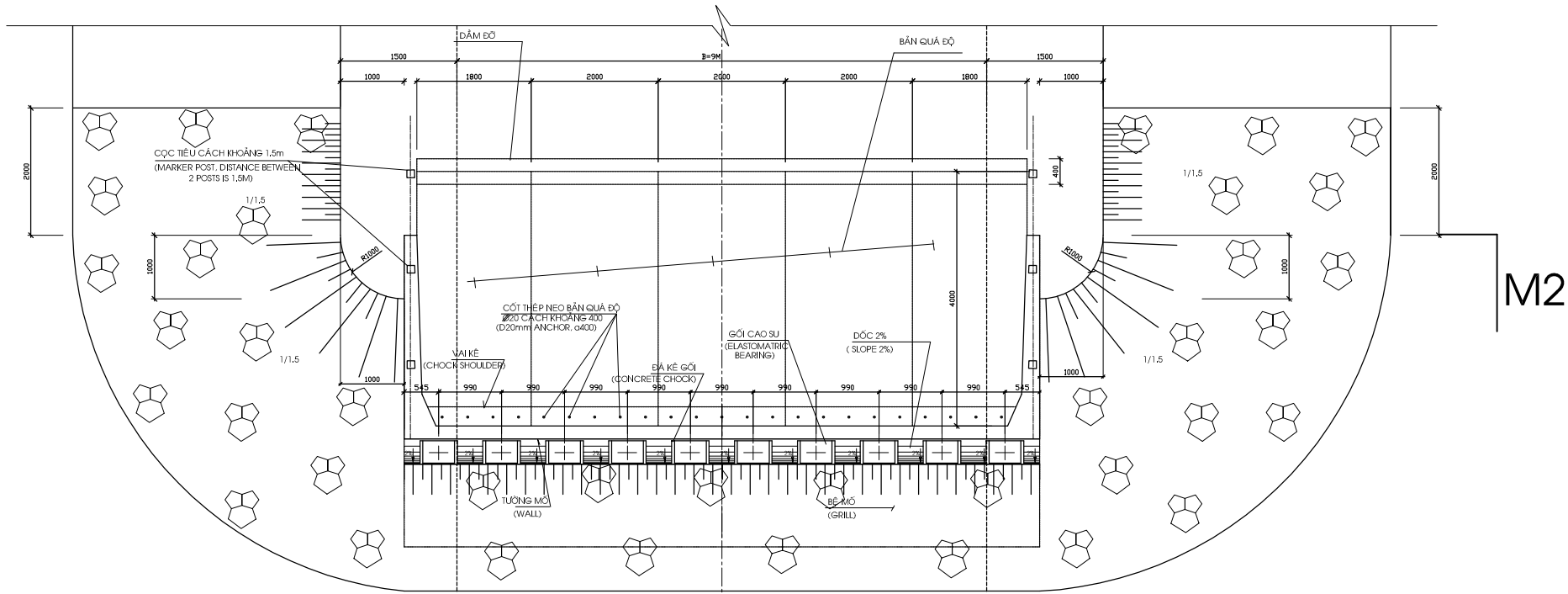
1/2 MẶT CẮT M1-M1 (1/2 CROSS SECTION M1-M1)

1/2 MẶT CẮT M2-M2 (1/2 CROSS SECTION M2-M2)



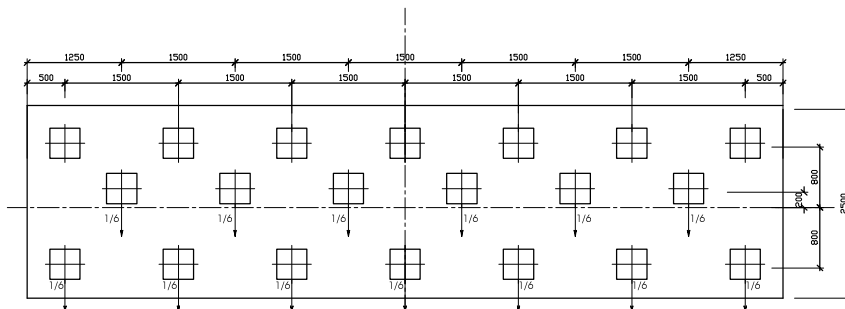
MẶT BẰNG CẤU TẠO MỔ A (TL 1/50)

STRUCTURE PLAN ABUTMENT A (SCALE 1/50)



MẶT BẰNG BỐ TRÍ CỘT (TL 1/50)

PILE LAYOUT PLAN (SCALE 1/50)



GHI CHÚ :

- ĐƠN VỊ DÙNG TRONG BẢN VẼ LÀ MM

FOOTNOTE :

- THE UNIT USED IN THIS DRAWING IS MILLIMETRE

NO.	DATE	DESCRIPTIONS	BY	APPRO.

REVISIONS

PROJECT MANAGEMENT UNIT FOR
HO CHI MINH CITY
WATER ENVIRONMENT IMPROVEMENT

THE DETAILED DESIGN ON HO CHI MINH CITY
WATER ENVIRONMENT IMPROVEMENT PROJECT
IN THE SOCIALIST REPUBLIC OF VIET NAM

PACKAGE E
WASTEWATER TREATMENT PLAN
CẤU TẠO MỔ A
STRUCTURE OF THE ABUTMENT A

SCALE : AS SHOWN

JICA JAPAN INTERNATIONAL COOPERATION
AGENCY (JICA)

PACIFIC CONSULTANTS INTERNATIONAL

DESIGNED
KIMURA TORU

CHECKED
KONDO MASAMI

DATE : JUNE 2001

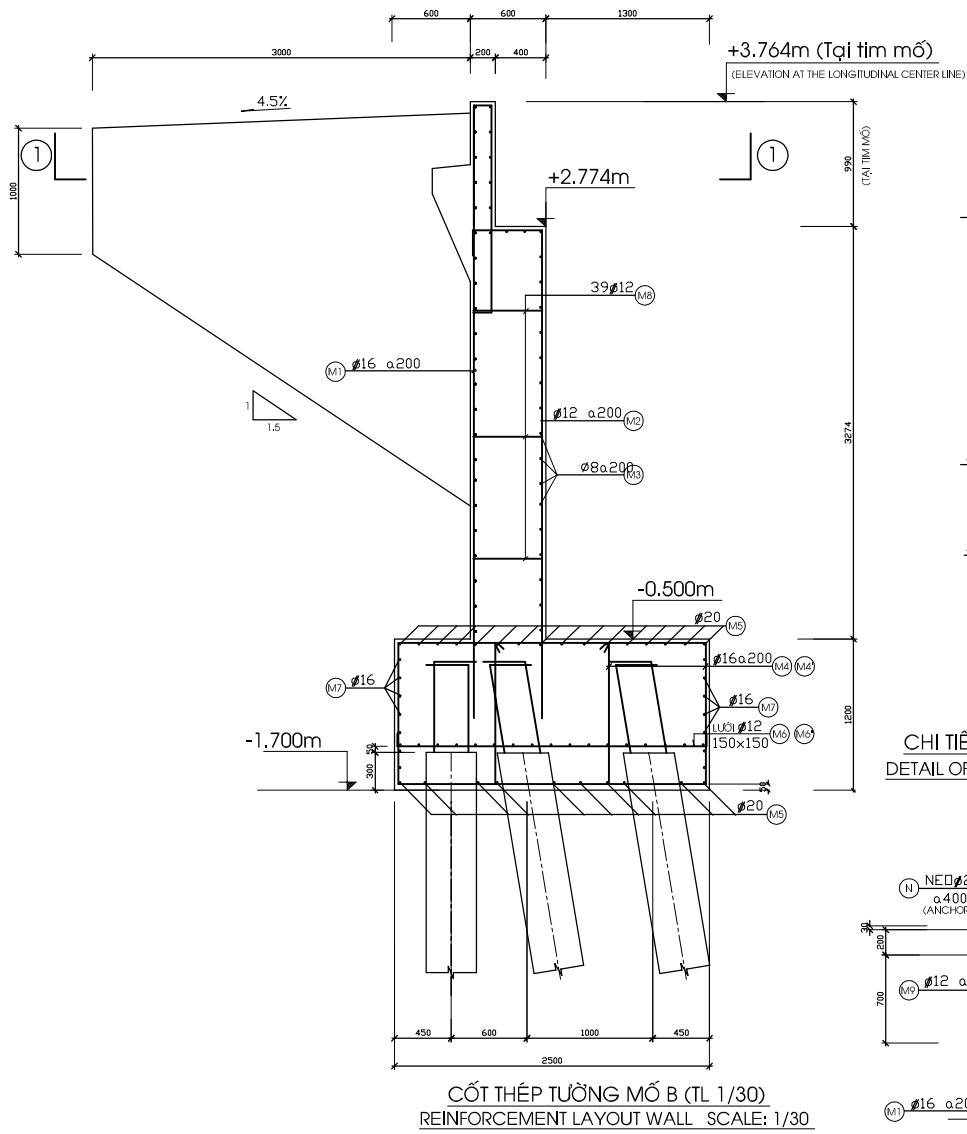
DWG.No,PE-WWTP-220-07

M1

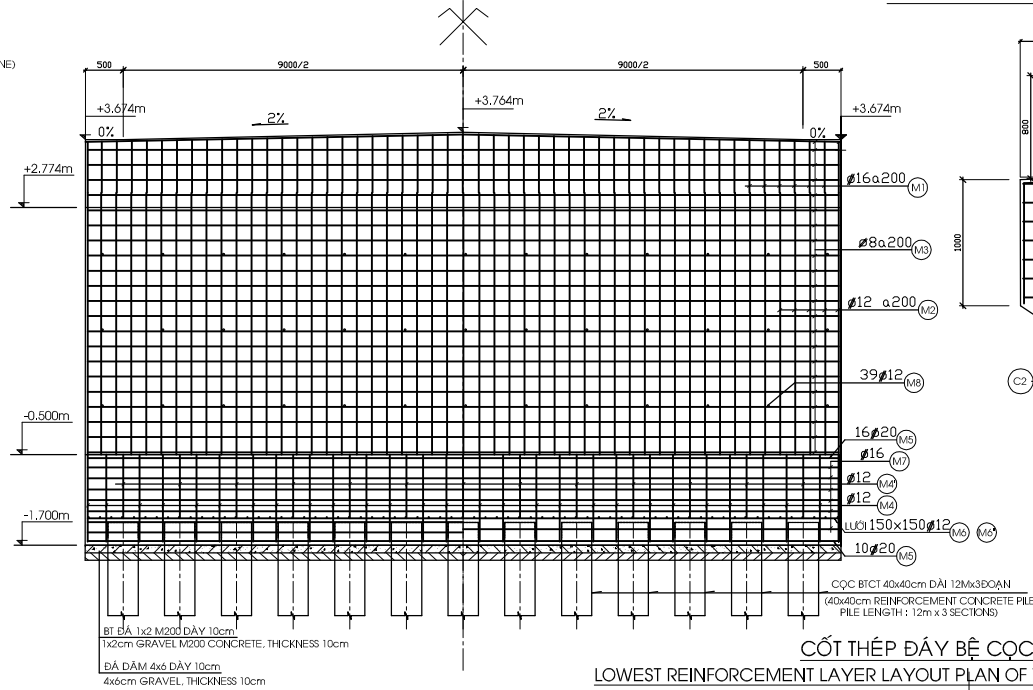
M2

MỔ B (ABUTMENT B)

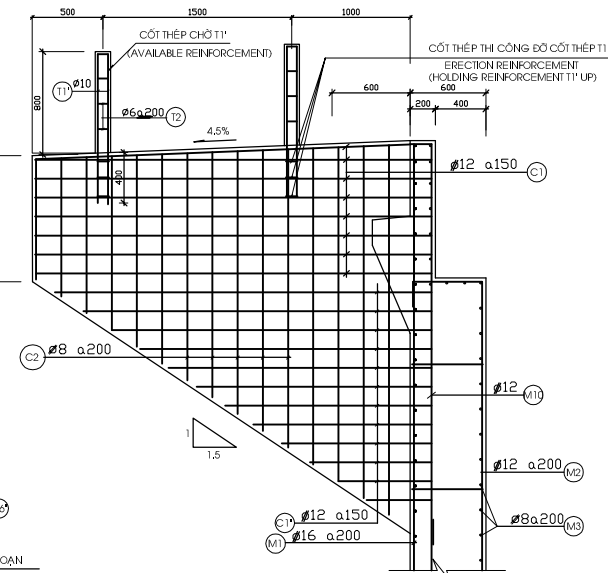
MẶT CẮT NGANG BỐ TRÍ CỐT THÉP MỔ (TL 1/30)
CROSS SECTION OF REINFORCEMENT LAYOUT OF THE ABUTMENT SCALE: 1/30



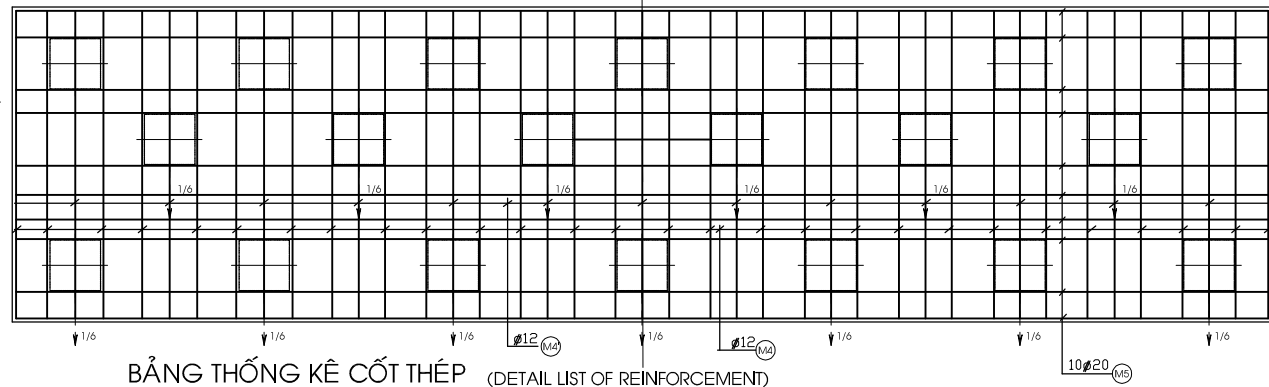
MẶT ĐÚNG CỐT THÉP MỔ (TL 1/50)
FRONT SIDE OF REINFORCEMENT LAYOUT OF THE ABUTMENT (SCALE 1/50)



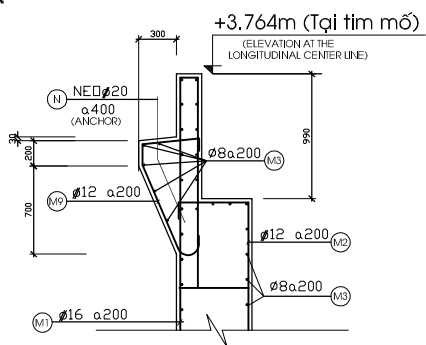
MẶT CHÍNH CỐT THÉP TƯỜNG MỔ (TL1/30)
FRONT SIDE OF REINFORCEMENT LAYOUT OF THE ABUTMENT'S WALL SCALE: 1/30



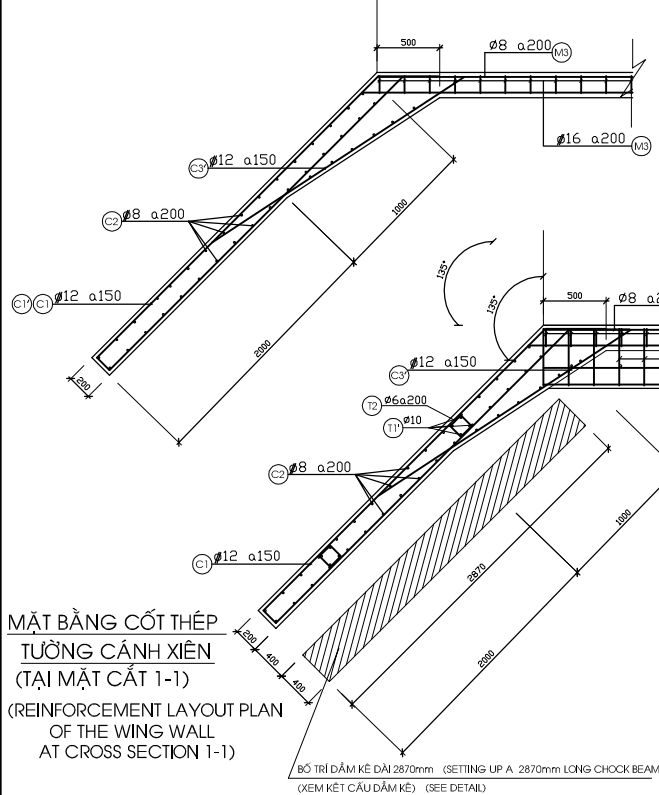
CỐT THÉP ĐÁY BỆ CỌC (TL 1/30)
LOWEST REINFORCEMENT LAYER LAYOUT PLAN OF THE ABUTMENT GRILL SCALE: 1/30



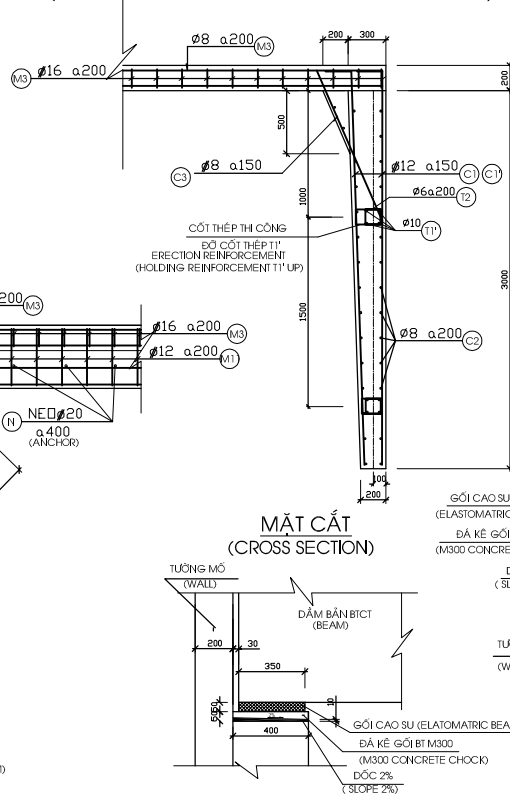
CHI TIẾT NEO BÀN QUÁ ĐỘ (TL 1/30)
DETAIL OF ANCHORING THE TRANSITION SLAP



MẶT BẰNG CỐT THÉP TƯỜNG CÁCH XIÊN
(REINFORCEMENT LAYOUT PLAN OF THE WING WALL)

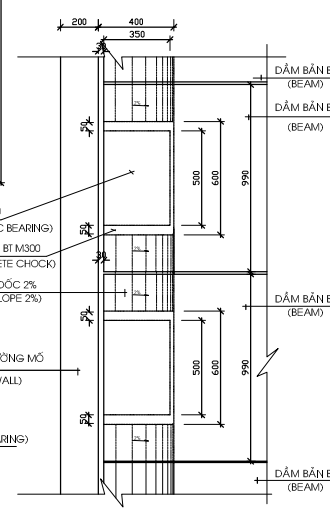


MẶT BẰNG CỐT THÉP TƯỜNG CÁCH THẲNG
(REINFORCEMENT LAYOUT PLAN OF THE SIDE WALL)

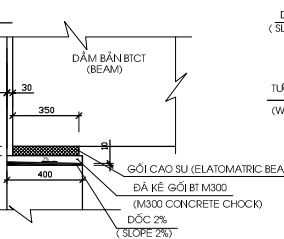


DẪM VÀ GỐI TẠI MỔ (TL1/20)
DETAIL OF BEAM & ELASTOMERIC BEARING LAYOUT AT THE ABUTMENT (SCALE 1/20)

MẶT BẰNG (PLAN)



MẶT CẮT (CROSS SECTION)



GHI CHÚ :

- CỐT THÉP > 10mm DÙNG LOẠI THép GÀM CT5
- CỐT THÉP < 10mm DÙNG LOẠI THép TRòn CT3
- BÊ TÔNG MỔ MẠC 250
- CỌC BT 40x40cm ĐƯỢC CẮT BỎ 1M PHÍA TRÊN
- BỂ NẾO CỐT THÉP ĐỌC VÀO BÊ TÔNG MỔ
- BÊ TÔNG LỚT M200
- DÙNG BÊ TÔNG ĐÁ KÉ GỐI ĐỂ ĐIỀU CHỈNH ĐỘ ĐỐC
- THEO ĐỘ ĐỐC ĐỌC CẤU CỦA DẪM CHỦ
- ĐƠN VỊ DÙNG TRONG BẢN VẼ LÀ MM

FOOTNOTE :

- TYPE OF REINFORCEMENT $\phi > 10\text{mm}$: USE DEFORMED REINFORCEMENT SYMBOLIZED CT5
- TYPE OF REINFORCEMENT $\phi < 10\text{mm}$: USE PLAIN ROUND BAR SYMBOLIZED CT3
- CONCRETE OF THE ABUTMENT IS MẠC 250
- CONCRETE FOR LINING THE GRILL OF THE ABUTMENT PART ONLY, REINFORCEMENT REMAINED AS VERTICAL-TIE SO AS TO ANCHOR PILE'S LONGITUDINAL REINFORCEMENT TO THE ABUTMENT GRILL'S CONCRETE.
- BALANCING THE CONCRETE OF CONCRETE CHECK WHEN CASTING, SO THAT ITS LONGITUDINAL SLOPE CAN FIT MAIN BEAM'S LONGITUDINAL BRIDGE SLOPE
- THE UNIT USED IN THIS DRAWING IS MILLIMETRE

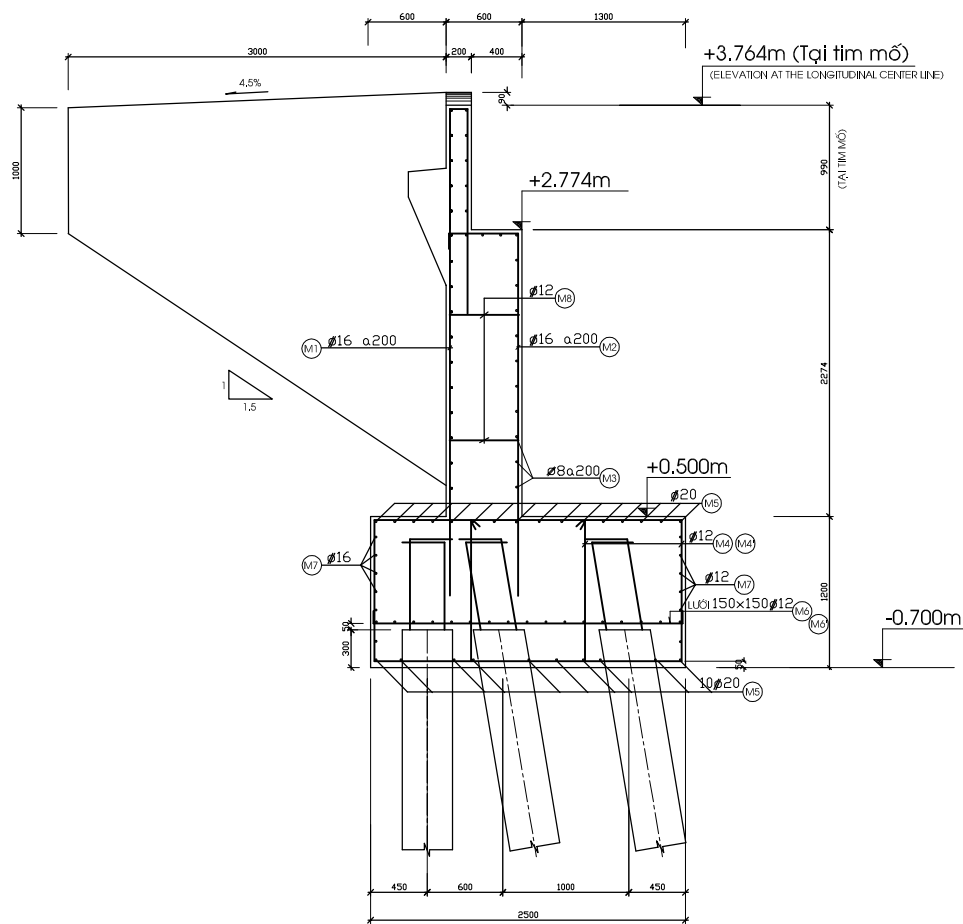
KẾT CẤU (STRUCTURE)	KÝ HIỆU (SYMBOL)	HÌNH DẠNG (FORM & DIMENSION DETAIL)	ϕ	CHIỀU DÀI 1 THÀNH (LENGTH OF A PIECE) (m)	SỐ THÀNH (SUBTOTAL OF PIECE) (PIECE)	TỔNG CHIỀU DÀI (SUBTOTAL OF LENGTH) (m)	TỈ LƯỢNG ĐƠN VỊ (THE UNIT WEIGHT) (kg/m)	TỔNG TRỌNG LƯỢNG (TOTAL OF WEIGHT) (kg)
MỔ B (ABUTMENT B)	M1	4840 1960 150	16	6680	51	340.68	1.578	540.66
	M2	3950 120 575	12	4645	51	236.90	0.888	210.36
	M3	60 9940 60	8	10060	51	513.06	0.395	202.66
	M4	1120 1670 120	16	5760	28x2	322.56	1.578	509
	M4'	820 1670 120	16	5160	13x2	134.16	1.578	211.71
	M5	9940	20	9940	26	258.44	2.466	637.31
	M6	9940	12	9940	7	69.58	0.888	61.79
	M6'	90 2440 90	12	2620	67	175.54	0.888	155.88
	M7	9940	16	9940	16	159.04	1.578	250.97
	M8	90 550 90	12	770	39	30.03	0.888	26.67
	M9	450 190 800 20 90	12	1780	54	96.12	0.888	85.36
M10	4960	12	4960	4	19.84	0.888	17.62	
N	350 370	20	720	25	18.00	2.466	44.39	
C1	140 3150	12	3290	8x4	105.28	0.888	93.49	
C1'	140 Lt=2233	12	2233	12x4	107.18	0.888	95.18	
C2	60 Lt=2058 60	8	2178	15x4	130.68	0.395	51.62	
C3	1303	12	2395	19x2	91.01	0.888	80.82	
j1	150 300 75 75	10	900	51	45.90	0.617	28.32	

NO.	DATE	DESCRIPTIONS	BY	APRO.
REVISIONS				
PROJECT MANAGEMENT UNIT FOR HO CHI MINH CITY WATER ENVIRONMENT IMPROVEMENT				
THE DETAILED DESIGN ON HO CHI MINH CITY WATER ENVIRONMENT IMPROVEMENT PROJECT IN THE SOCIALIST REPUBLIC OF VIET NAM				
PACKAGE E WASTEWATER TREATMENT PLAN CỐT THÉP MỔ B REINFORCEMENT LAYOUT OF THE ABUTMENT B				
SCALE : AS SHOWN				
JAPAN INTERNATIONAL COOPERATION AGENCY (JICA)				
PACIFIC CONSULTANTS INTERNATIONAL				
DESIGNED KIMURA TORU		CHECKED KONDO MASAMI		
DATE : JUNE 2001		DWG.No.PE-WWTP-220-08		

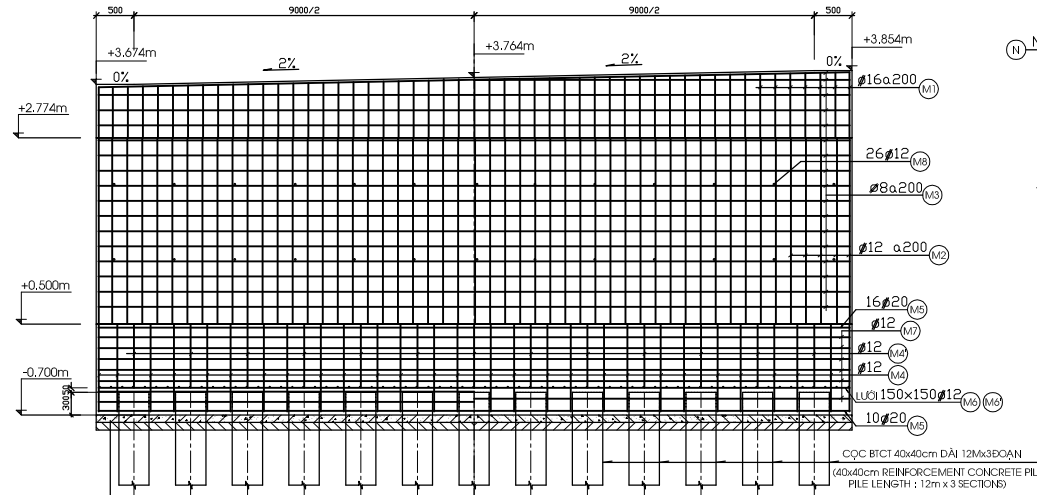
MỒ A

(ABUTMENT A)

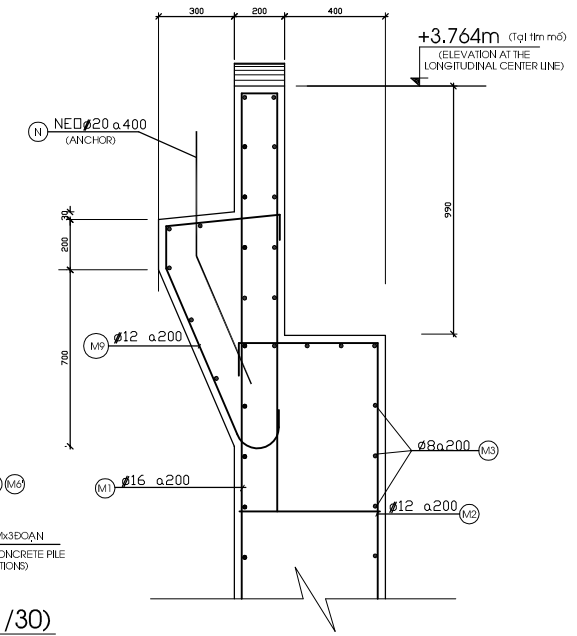
MẶT CẮT NGANG BỐ TRÍ CỐT THÉP MỒ (TL 1/30)
CROSS SECTION OF REINFORCEMENT LAYOUT OF THE ABUTMENT SCALE: 1/30



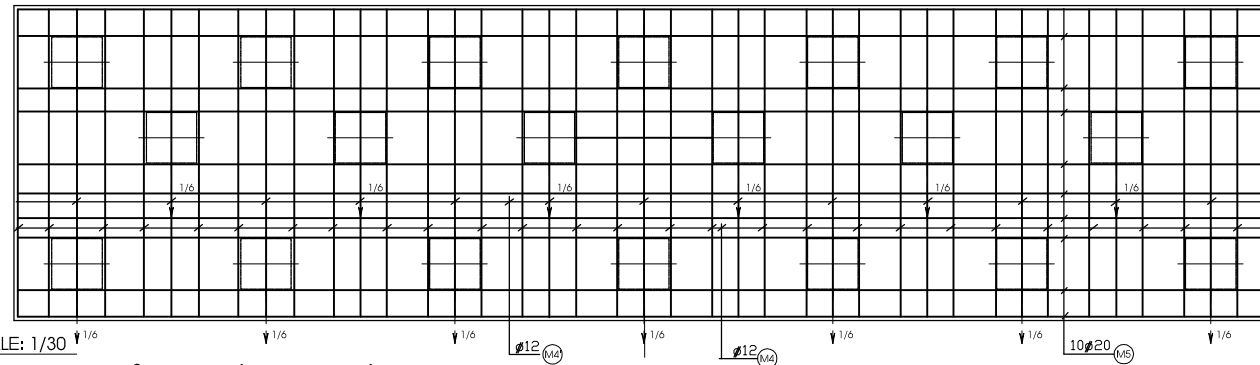
MẶT CHÍNH BỐ TRÍ CỐT THÉP (TL 1/50)
FRONT SIDE OF REINFORCEMENT LAYOUT OF THE ABUTMENT (SCALE 1/50)



CHI TIẾT NEO BÀN QUÁ ĐỘ (TL 1/15)
DETAIL OF ANCHORING THE TRANSITION SLAP SCALE: 1/15



CỐT THÉP ĐÁY BỆ CỌC (TL 1/30)
LOWEST REINFORCEMENT LAYER LAYOUT PLAN OF THE ABUTMENT GRILL SCALE: 1/30

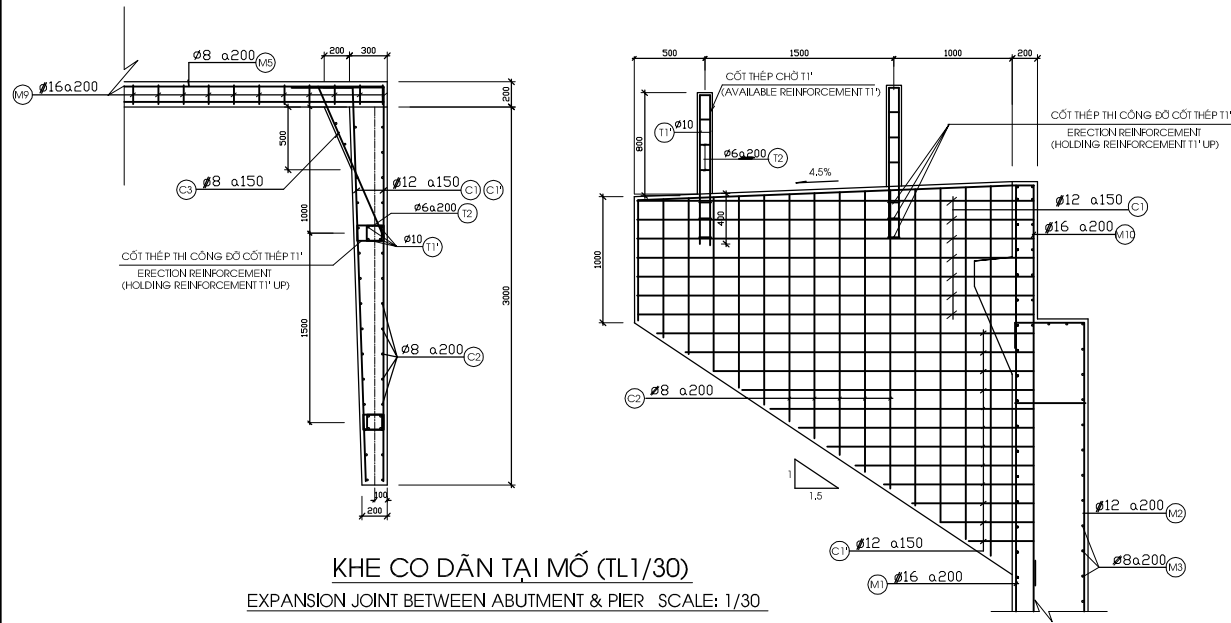


CỐT THÉP TƯỜNG MỒ A (TL 1/30)

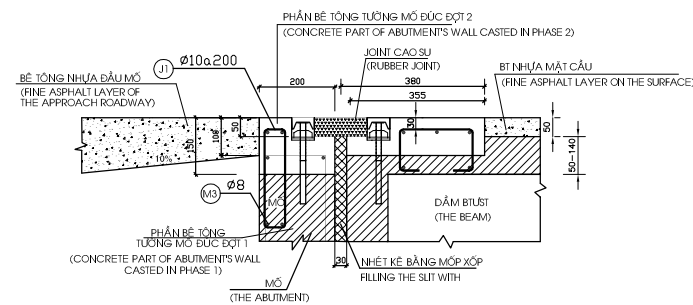
REINFORCEMENT LAYOUT PLAN OF THE SIDE WALL SCALE: 1/30

MẶT CHÍNH CỐT THÉP TƯỜNG MỒ (TL 1/30)

FRONT SIDE OF REINFORCEMENT LAYOUT OF THE ABUTMENT'S WALL SCALE: 1/30



KHE CO DẪN TẠI MỒ (TL 1/30)
EXPANSION JOINT BETWEEN ABUTMENT & PIER SCALE: 1/30



BẢNG THỐNG KÊ CỐT THÉP (DETAIL LIST OF REINFORCEMENT)

KẾT CẤU (STRUCTURE)	KÝ HIỆU (SYMBOL)	HÌNH DẠNG (FORM & DIMENSION DETAIL)	Ø	CHÉU DÀI 1 THẠNH (LENGTH OF A PEECE (m))	SỐ THÀNH (SUBTOTAL OF PEECE)	TỔNG CHÉU DÀI (SUBTOTAL OF LENGTH) (m)	T/ƯỞNG ĐƠN VỊ (THE UNIT WEIGHT) (kg/m)	TỔNG TRỌNG LƯỢNG (TOTAL WEIGHT) (kg)
MỒ A (ABUTMENT A)	M1		16	5680	51	289.68	1.578	457.11
	M2		12	3645	51	185.89	0.888	165.07
	M3		8	10060	41	412.46	0.395	162.92
	M4		16	5760	28x2	322.56	1.578	508.99
	M4'		16	5160	13x2	134.16	1.578	211.7
	M5		20	9940	26	258.44	2.466	637.31
	M6		12	9940	7	168.98	0.888	150.05
	M6'		12	2620	67	175.54	0.888	155.87
	M7		16	9940	16	159.04	1.578	250.96
	M8		12	770	26	20.02	0.888	17.77
	M9		12	1780	54	96.12	0.888	85.35
	M10		12	4960	4	19.84	0.888	17.61
	N		20	720	25	18	2.466	44.38
	C1		12	3290	8x4	105.28	0.888	93.48
C1'		12	2233	12x4	107.18	0.888	95.17	
C2		8	2178	15x4	130.68	0.395	51.61	
C3		12	2395	19x2	91.01	0.888	80.81	
J1		10	900	51	45.90	0.617	28.32	

GHI CHÚ :

- CỐT THÉP Ø > 10mm DÙNG LOẠI THÉP GẮN CT5
- CỐT THÉP Ø < 10mm DÙNG LOẠI THÉP TRON CT3
- BÊ TÔNG MỐC MẠC 250
- CỌC BÈ 40x40cm ĐƯỢC CẮT BỎ 1M PHÍA TRÊN
- ĐỂ NEO CỐT THÉP ĐỌC VÀO BÈ BÊ MỐ
- BÊ TÔNG LỚT M200
- ĐƠN VỊ DÙNG TRONG BẢN VẼ LÀ mm

FOOTNOTE :

- TYPE OF REINFORCEMENT Ø > 10mm : USE DEFORMED REINFORCEMENT SYMBOLIZED CT5
- TYPE OF REINFORCEMENT Ø < 10mm : USE PLAIN ROUND BAR SYMBOLIZED CT3
- CONCRETE OF THE ABUTMENT IS MAC 250
- CONCRETE FOR LINING THE GRILL OF THE ABUTMENT IS MAC 200
- CUTTING 1 METRE LONG PILE HEAD (CONCRETE PART ONLY). REINFORCEMENT REMAINED AS VERTICAL-TIE SO AS TO ANCHOR PILE'S LONGITUDINAL REINFORCEMENT TO THE ABUTMENT GRILL'S CONCRETE.
- THE UNIT USED IN THIS DRAWING IS MILLIMETRE

NO. DATE DESCRIPTIONS BY APPRO.

REVISIONS

PROJECT MANAGEMENT UNIT FOR
HO CHI MINH CITY
WATER ENVIRONMENT IMPROVEMENT

THE DETAILED DESIGN ON HO CHI MINH CITY
WATER ENVIRONMENT IMPROVEMENT PROJECT
IN THE SOCIALIST REPUBLIC OF VIET NAM

PACKAGE E
WASTEWATER TREATMENT PLAN
CỐT THÉP MỒ A
REINFORCEMENT LAYOUT OF
THE ABUTMENT A

SCALE : AS SHOWN

JICA JAPAN INTERNATIONAL COOPERATION
AGENCY (JICA)

PACIFIC CONSULTANTS INTERNATIONAL

DESIGNED
KIMURA TORU

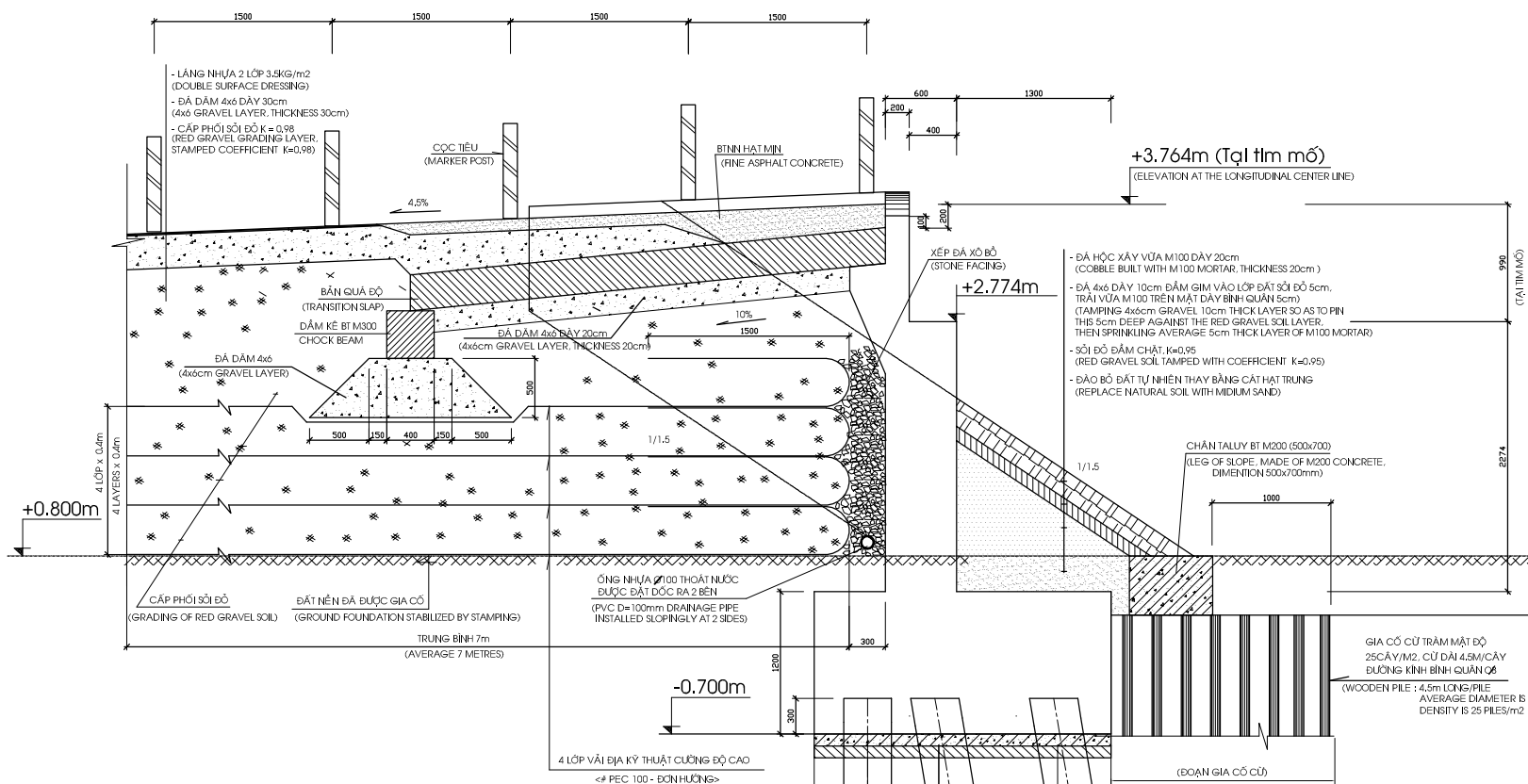
CHECKED
KONDO MASAMI

DATE : JUNE 2001

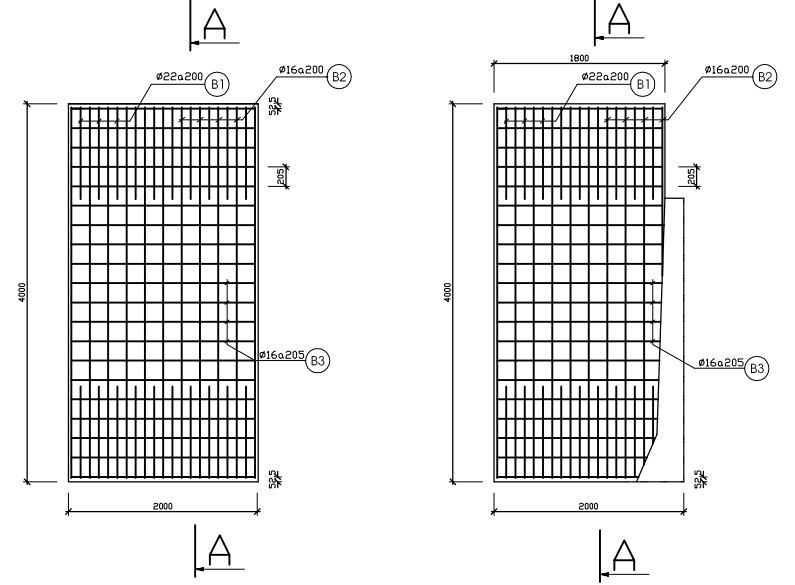
DWG.No.PE-WWTP-220-09

MẶT CẮT M1-M1 (TL 1/30)
CROSS SECTION M1-M1 SCALE: 1/30
(BỐ TRÍ VẢI ĐỊA KỸ THUẬT SAU LƯNG MỔ)
(GEOTEXTILE LAYOUT AT THE BACK OF THE ABUTMENT)

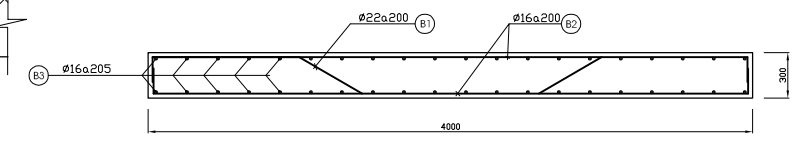
MỔ A
(ABUTMENT A)



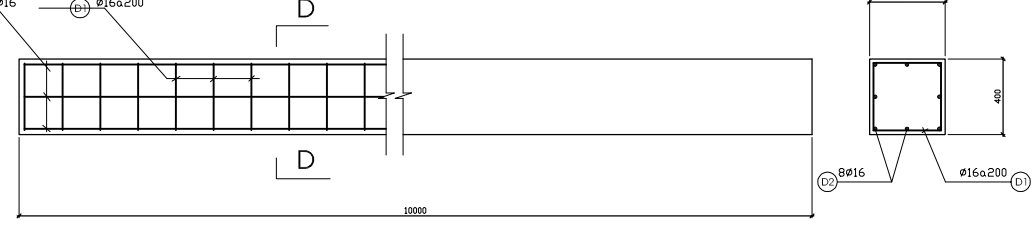
BỐ TRÍ CỐT THÉP BẢN QUÁ ĐỘ (TL 1/40)
REINFORCEMENT LAYOUT PLANE OF TRANSITION SLAP SCALE: 1/40



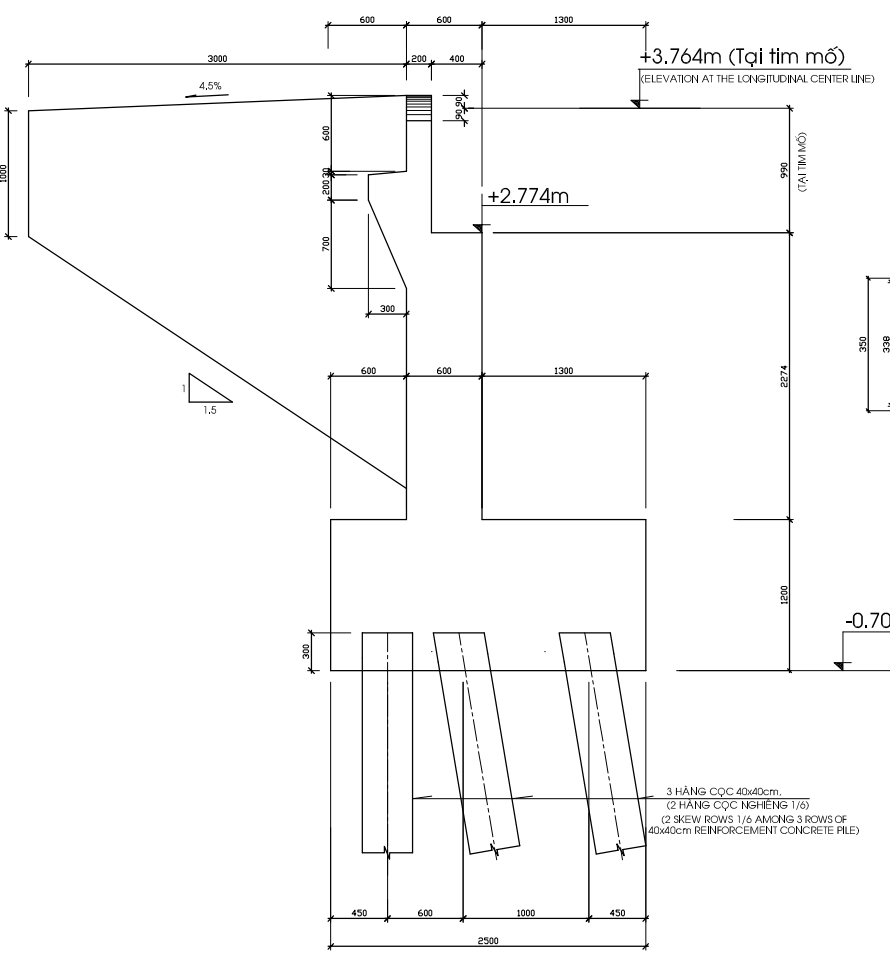
BỐ TRÍ CỐT THÉP MẶT CẮT A - A (TL 1/25)
REINFORCEMENT LAYOUT OF CROSS SECTION A-A SCALE: 1/25



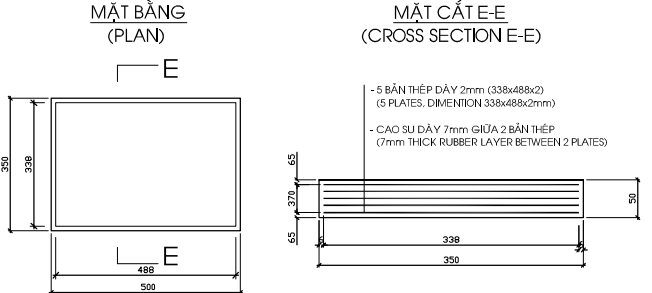
BỐ TRÍ CỐT THÉP DẦM KÊ (TL 1/20)
REINFORCEMENT LAYOUT OF CHOCK BEAM SCALE: 1/25



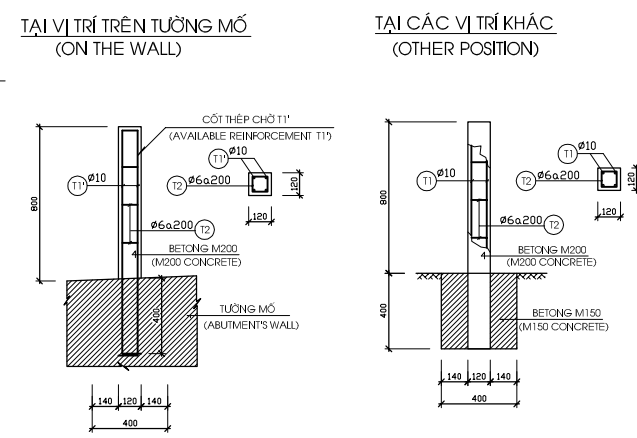
CẤU TẠO MỔ (TL1/30)
STRUCTURE DETAIL OF THE ABUTMENT SCALE: 1/30



GỖ CAO SU (TL1/10)
DETAIL OF THE ELASTOMATRIC BEARING SCALE: 1/10



CHI TIẾT CỌC TIÊU (TL1/20)
(DETAIL OF MARKER POST - SCALE 1/20)



BẢNG THỐNG KÊ CỐT THÉP (DETAIL LIST OF REINFORCEMENT)

KẾT CẤU (STRUCTURE)	KÝ HIỆU (SYMBOL)	HÌNH DẠNG (FORM & DIMENSION DETAIL)	Ø	CHIỀU DÀI 1 THANH (LENGTH OF A PIECE) (m)	SỐ THANH (SUBTOTAL OF PIECE) (PIECE)	TỔNG CHIỀU DÀI (SUBTOTAL OF LENGTH) (m)	TỈ LƯỢNG ĐƠN VỊ (THE UNIT WEIGHT) (kg/m)	TỔNG TỈ LƯỢNG (TOTAL OF WEIGHT) (kg)
1 BẢN QUÁ ĐỘ (Ở GIỮA) (1 TRANSITION SLAP IN THE MID POSITION)	B1		22	3.703	10	37.03	2.984	110.50
	B2		16	4.225	22	92.95	1.578	146.77
	B3		16	1.190	40	87.6	1.578	138.32
1 BẢN QUÁ ĐỘ (CẠNH TƯỜNG THẲNG) (1 TRANSITION SLAP BY THE SIDE WALL)	B1		22	3.703	9	37.03	2.984	99.45
	B2		16	4.225	20	92.95	1.578	133.43
	B3		16	1.190	40	87.6	1.578	75.16
DẦM KÊ (CHOCK BEAM)	D1		16	1.600	51	81.6	1.578	128.76
	D2		16	9.950	8	79.6	1.578	125.61
1 CỌC TIÊU (OTHER POSITION)	T1		10	1.200	4	4.8	0.617	2.96
	T2		6	0.370	4	1.48	0.222	0.33
1 CỌC TIÊU (ON THE WALL)	T1'		10	1.275	4	5.1	0.617	3.15
	T2		6	0.370	4	1.48	0.222	0.33

GHI CHÚ :
 - CỐT THÉP Ø > 10mm DÙNG LOẠI THÉP GÀN CTS
 - CỐT THÉP Ø < 10mm DÙNG LOẠI THÉP TRON CTS
 - ĐƠN VỊ DÙNG TRONG BẢN VẼ LÀ mm

FOOTNOTE :
 - TYPE OF REINFORCEMENT Ø > 10mm : USE DEFORMED REINFORCEMENT SYMBOLIZED CTS
 - TYPE OF REINFORCEMENT Ø < 10mm : USE PLAIN ROUND BAR SYMBOLIZED CTS
 - THE UNIT USED IN THIS DRAWING IS MILLIMETRE

NO.	DATE	DESCRIPTIONS	BY	APRO.
REVISIONS				

PROJECT MANAGEMENT UNIT FOR
 HO CHI MINH CITY
 WATER ENVIRONMENT IMPROVEMENT

PACKAGE E
 WASTEWATER TREATMENT PLAN
 BẮN TIẾP CẬN
 & GIA CỐ TRƯỚC MỔ A
 TRANSITION SLAP & STABILIZING IN FRONT OF
 THE ABUTMENT A

SCALE : AS SHOWN

JICA JAPAN INTERNATIONAL COOPERATION AGENCY (JICA)

PACIFIC CONSULTANTS INTERNATIONAL

DESIGNED: KIMURA TORU
 CHECKED: KONDO MASAMI

DATE : JUNE 2001
 DWG.No. PE-WWTP-220-10