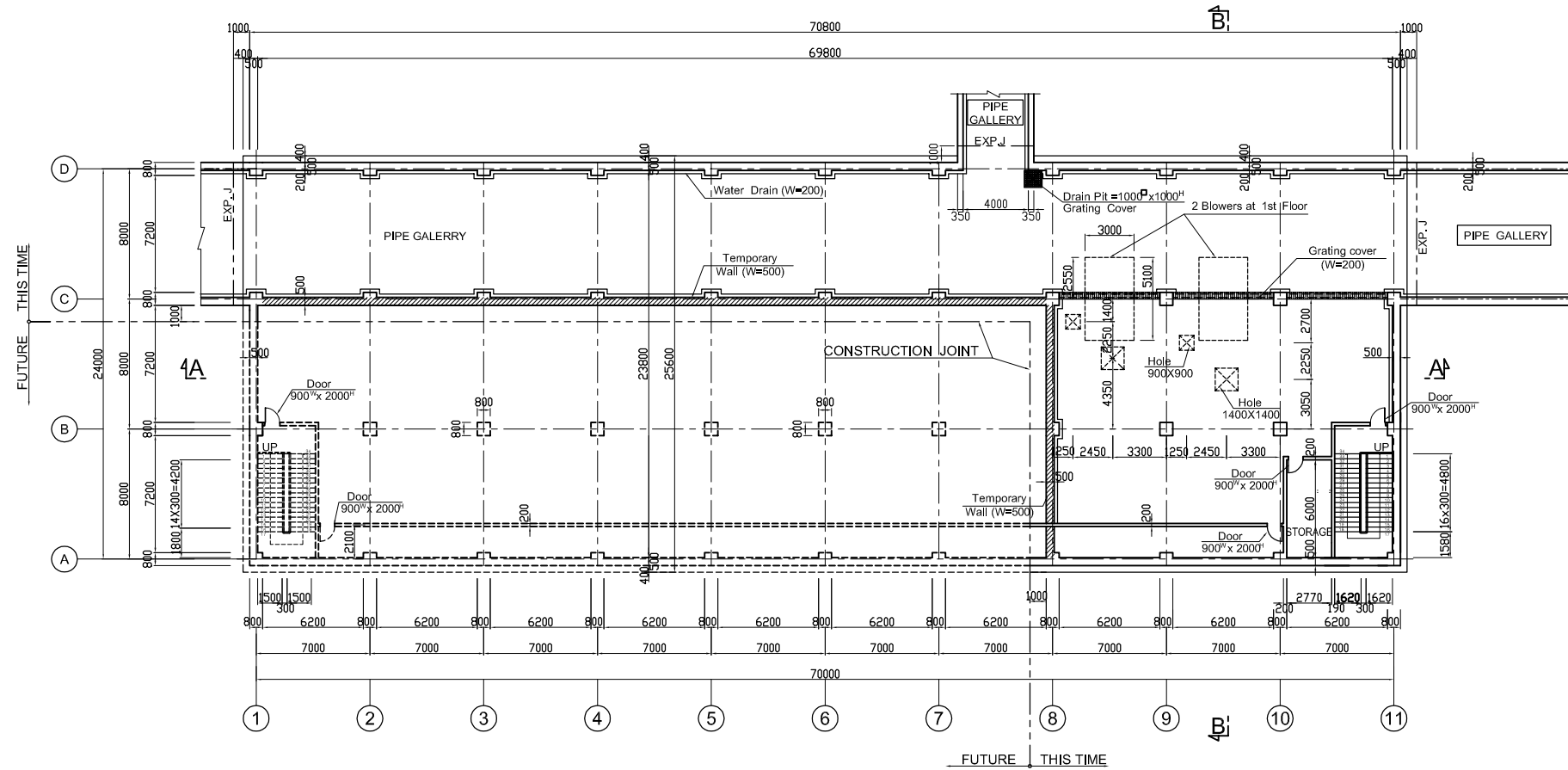
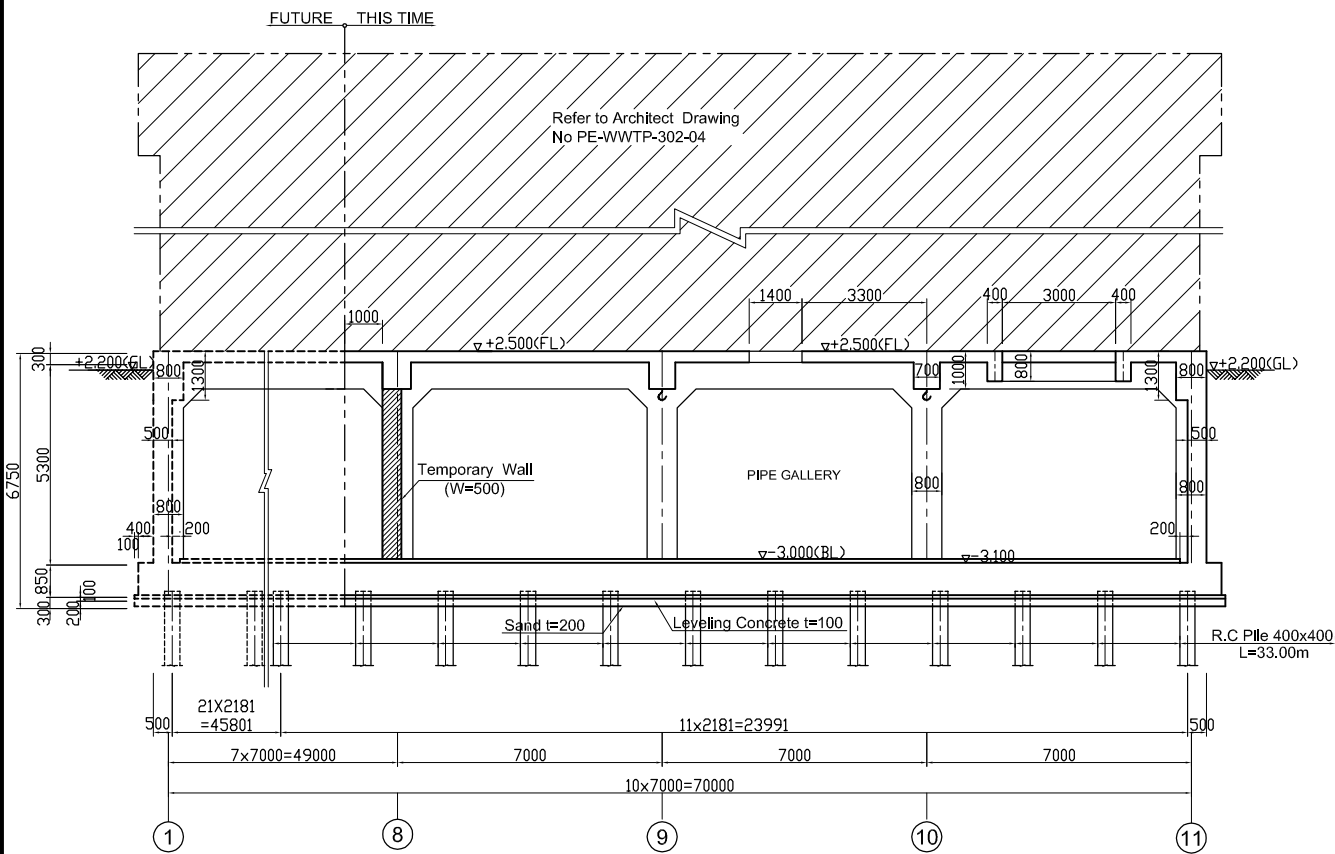


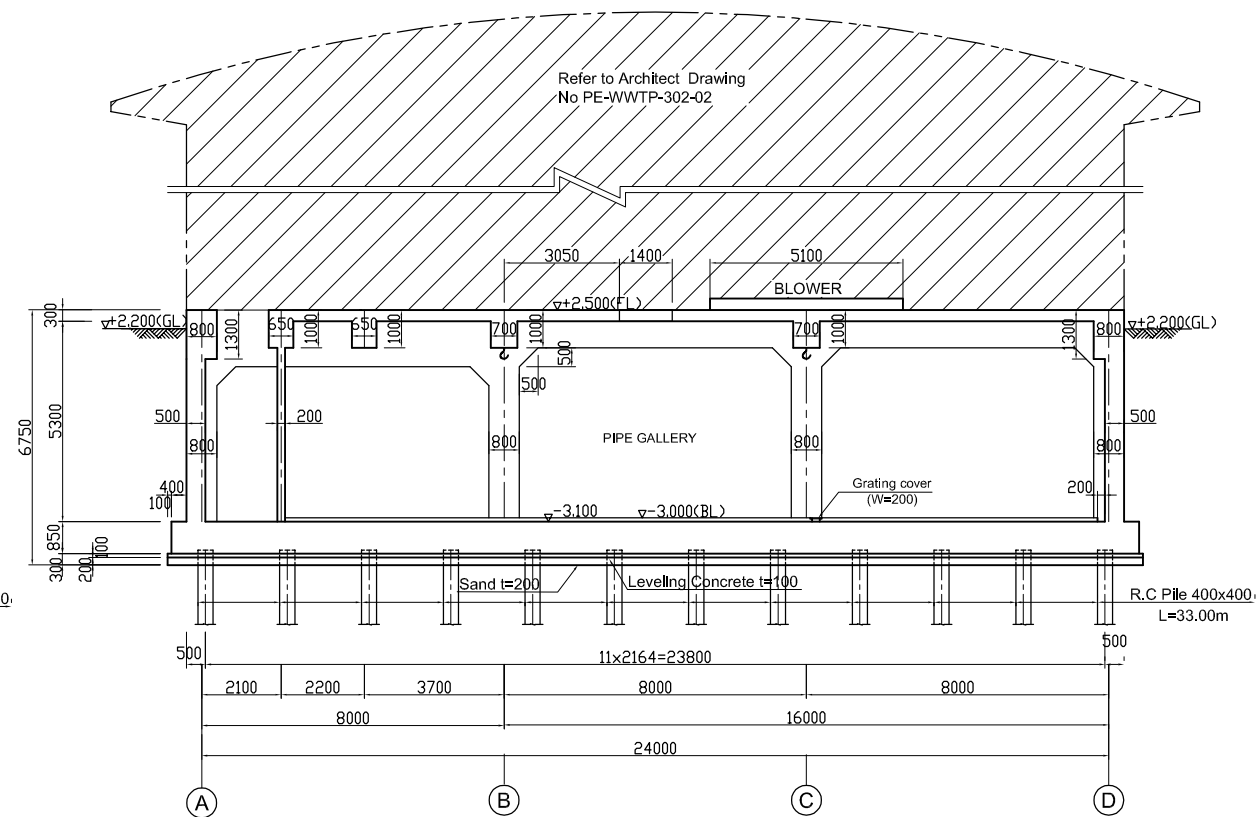
BLOWER BUILDING PLAN AND SECTION



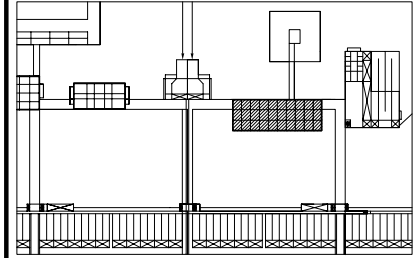
UNDER GROUND FLOOR PLAN (B1) Scale: 1/200



SECTION A-A Scale: 1/100



SECTION B-B Scale: 1/100



KEY PLAN

NOTES :

- ALL DIMENSIONS ARE MM UNLESS STATED OTHERWISE
- CONCRETE E21
- LEVELLING CONCRETE G10
- ALL REINFORCEMENT BARS ARE DEFORMED TYPE (CT5 OR EQUIVALENT AS INDICATED IN SPECIFICATION OF PACKAGE E)
- THE SPECIFICATION TO BE REFERRED FOR MORE INFORMATION OF MATERIAL GRADES
- PILE LOCATION SHOWN ON PILE ARRANGEMENT DWG. No. PE - WWTP - 258 - 01
- DETAILS OF R.C PILE SHOWN ON DWG. No. PE - WWTP - 265 - 01

DATE	DESCRIPTIONS	BY	APRO.

REVISIONS

PROJECT MANAGEMENT UNIT FOR
WATER ENVIRONMENT IMPROVEMENT FOR
HO CHI MINH CITY

THE DETAILED DESIGN ON HO CHI MINH CITY
WATER ENVIRONMENT IMPROVEMENT PROJECT
IN THE SOCIALIST REPUBLIC OF VIET NAM

PACKAGE E
WASTEWATER TREATMENT PLANT
**BLOWER BUILDING
PLAN and SECTION**

SCALE : 1/100, 1/200

JICA JAPAN INTERNATIONAL COOPERATION
AGENCY (JICA)

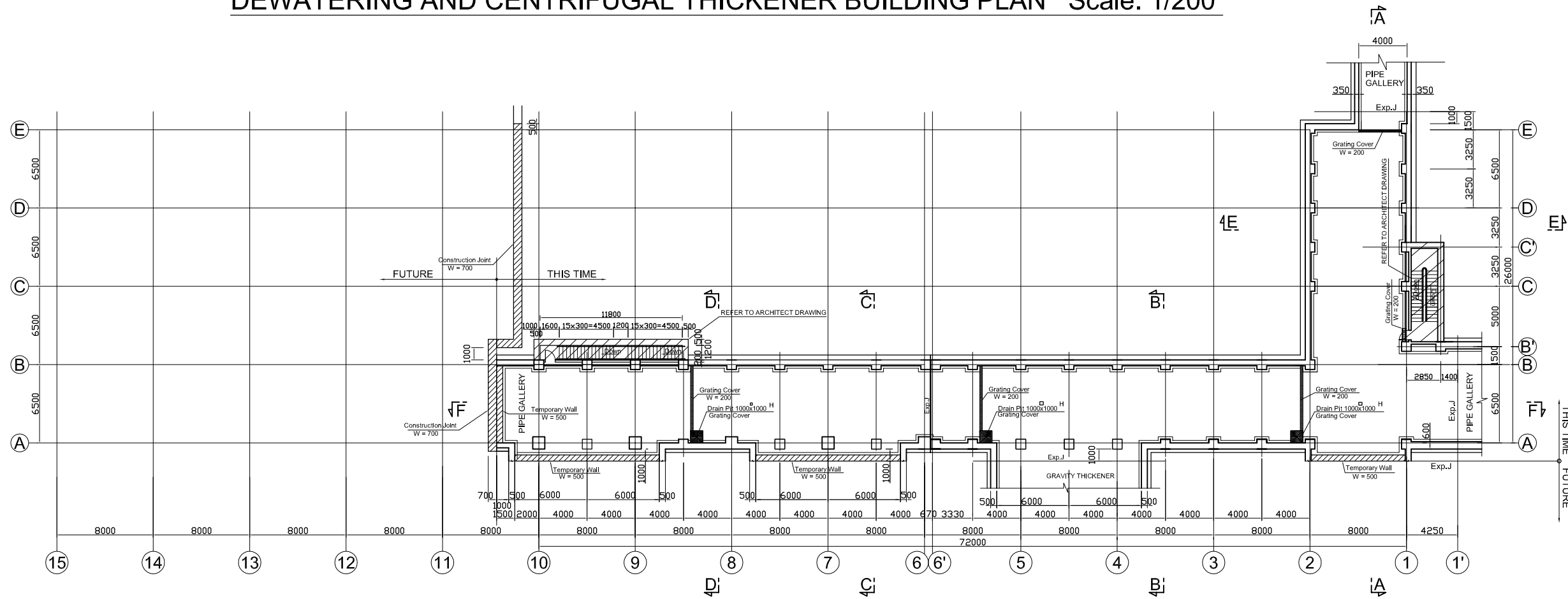
PACIFIC CONSULTANTS INTERNATIONAL

DESIGNED
KIMURA TORU

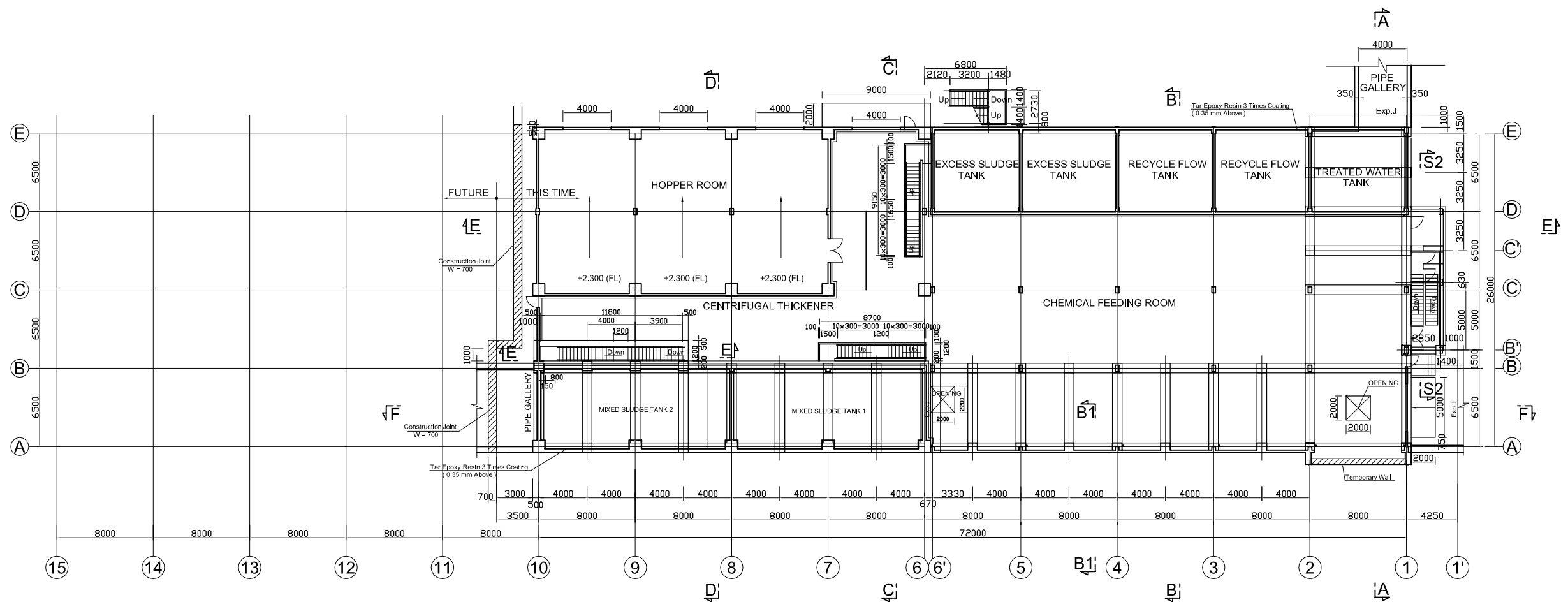
CHECKED
KONDO MASAMI

DATE : JUNE 2001 DWG. No. PE - WWTP - 212- 01

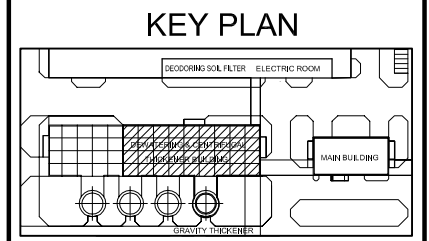
DEWATERING AND CENTRIFUGAL THICKENER BUILDING PLAN Scale: 1/200



UNDERGROUND FLOOR PLAN Scale: 1/200



FIRST FLOOR PLAN Scale: 1/200



- NOTES :**
- ALL DIMENSIONS ARE MM UNLESS STATED OTHERWISE
 - CONCRETE E21
 - LEVELLING CONCRETE G10
 - ALL REINFORCEMENT BARS ARE DEFORMED TYPE (CT5 OR EQUIVALENT AS INDICATED IN SPECIFICATION OF PACKAGE E)
 - THE SPECIFICATION TO BE REFERRED FOR MORE INFORMATION OF MATERIAL GRADES

NO.	DATE	DESCRIPTIONS	BY	APRO.

REVISIONS

PROJECT MANAGEMENT UNIT FOR
HO CHI MINH CITY
WATER ENVIRONMENT IMPROVEMENT

THE DETAILED DESIGN STUDY ON HO CHI MINH CITY
WATER ENVIRONMENT IMPROVEMENT PROJECT
IN THE SOCIALIST REPUBLIC OF VIET NAM

PACKAGE E
WASTE WATER TREATMENT PLANT
**DEWATERING AND CENTRIFUGAL
THICKENER BUILDING PLAN**

SCALE : 1 / 200

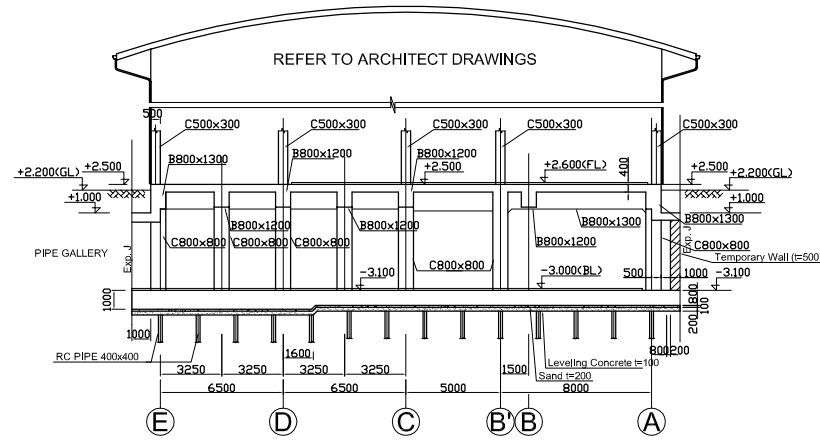
JICA JAPAN INTERNATIONAL COOPERATION AGENCY (JICA)

PACIFIC CONSULTANTS INTERNATIONAL

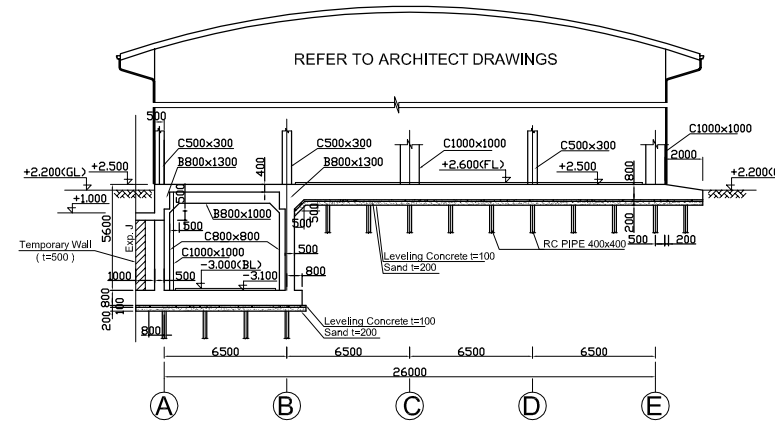
DESIGNED KIMURA TORU CHECKED KONDO MASAMI

DATE : JUNE 2001 DWG. No. PE-WWTP - 213 - 01

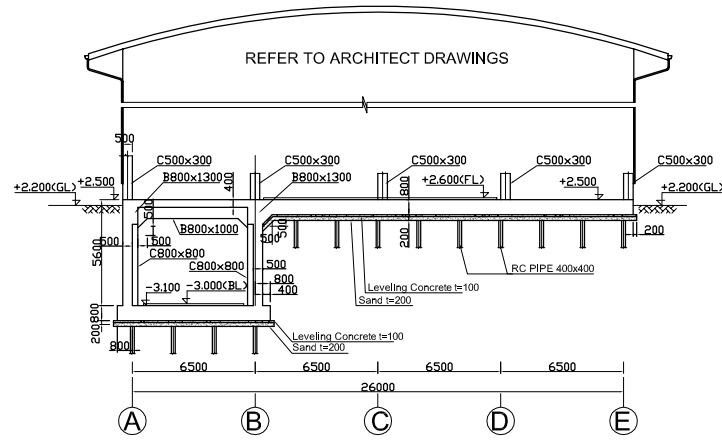
DEWATERING AND CENTRIFUGAL THICKENER BUILDING SECTION Scale: 1/200



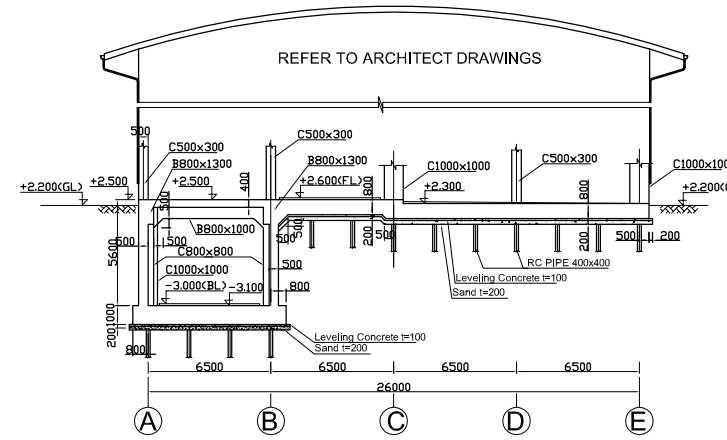
SECTION A-A Scale: 1/200



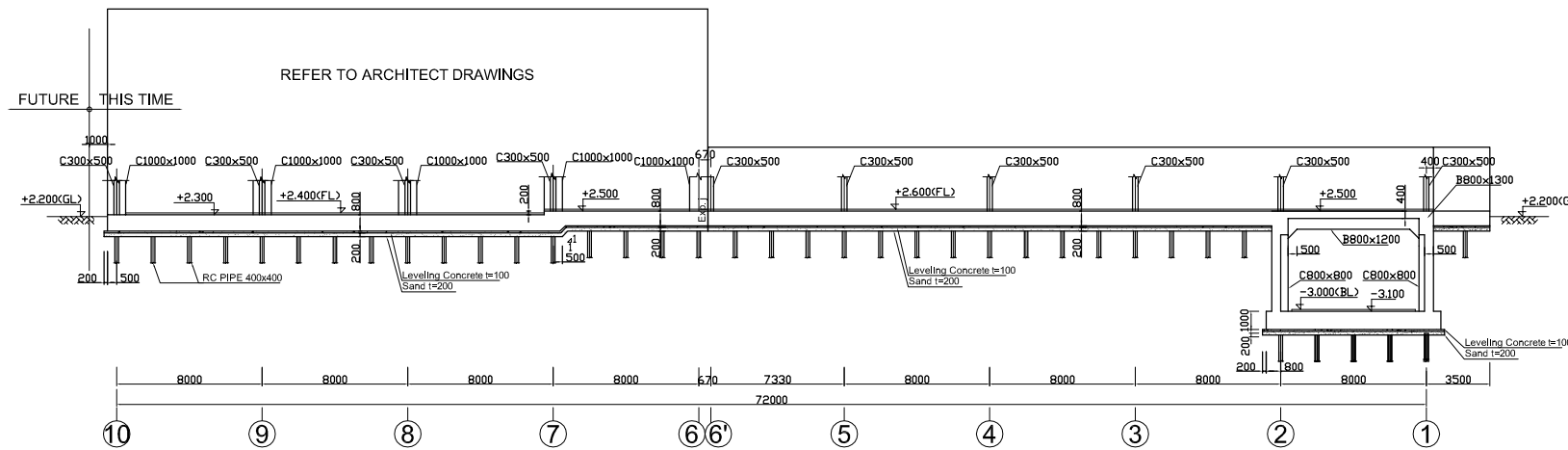
SECTION C-C Scale: 1/200



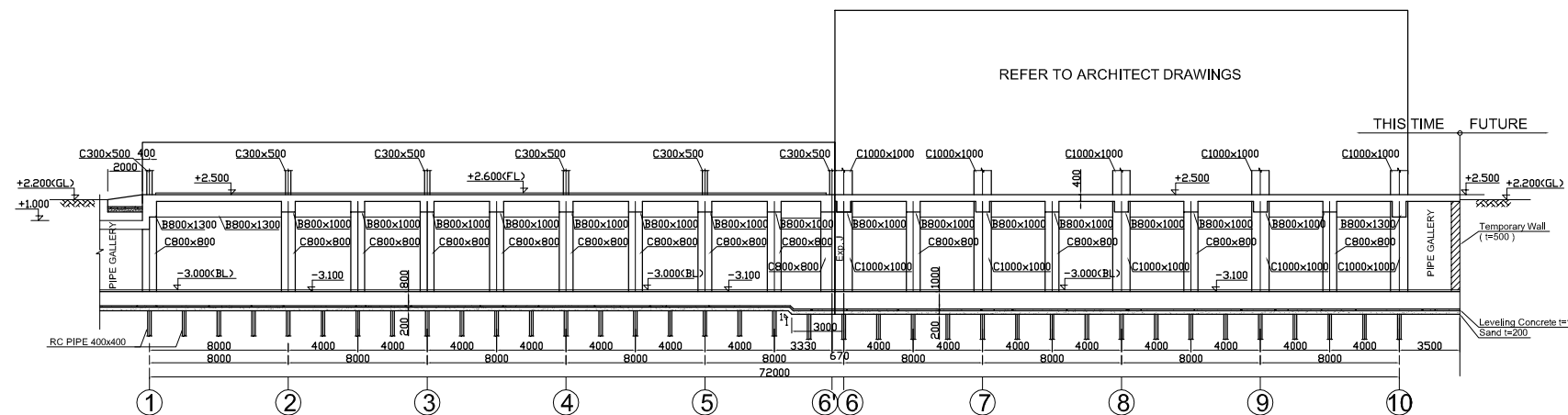
SECTION B-B Scale: 1/200



SECTION D-D Scale: 1/200

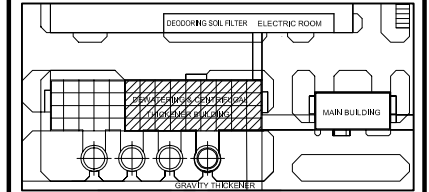


SECTION E-E Scale: 1/200



SECTION F-F Scale: 1/200

KEY PLAN



NOTES :

- ALL DIMENSIONS ARE MM UNLESS STATED OTHERWISE
- CONCRETE E21
- LEVELLING CONCRETE G10
- ALL REINFORCEMENT BARS ARE DEFORMED TYPE (CT5 OR EQUIVALENT AS INDICATED IN SPECIFICATION OF PACKAGE E)
- THE SPECIFICATION TO BE REFERRED FOR MORE INFORMATION OF MATERIAL GRADES
- PILE LOCATION SHOWN ON PILE ARRANGEMENT DWG. No. PE - WWTP - 259 - 01
- DETAILS OF R.C PILE SHOWN ON DWG. No. PE - WWTP - 265 - 01

NO.	DATE	DESCRIPTIONS	BY	APRO.

REVISIONS

PROJECT MANAGEMENT UNIT FOR
HO CHI MINH CITY
WATER ENVIRONMENT IMPROVEMENT

THE DETAILED DESIGN STUDY ON HO CHI MINH CITY
WATER ENVIRONMENT IMPROVEMENT PROJECT
IN THE SOCIALIST REPUBLIC OF VIET NAM

PACKAGE E
WASTE WATER TREATMENT PLANT

DEWATERING AND CENTRIFUGAL
THICKENER BUILDING SECTION

SCALE: 1 / 200

JICA JAPAN INTERNATIONAL COOPERATION
AGENCY (JICA)

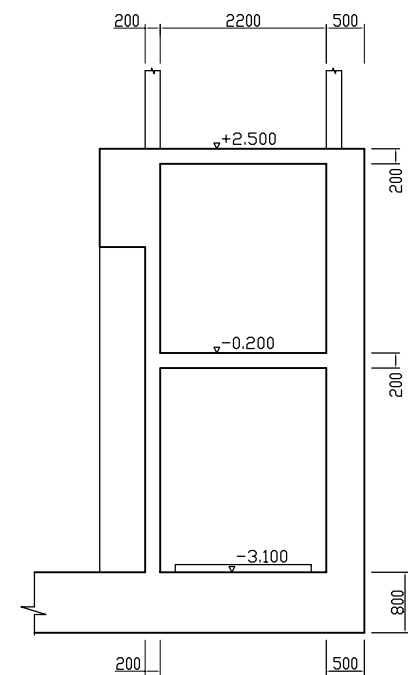
PACIFIC CONSULTANTS INTERNATIONAL

DESIGNED
KIMURA TORU

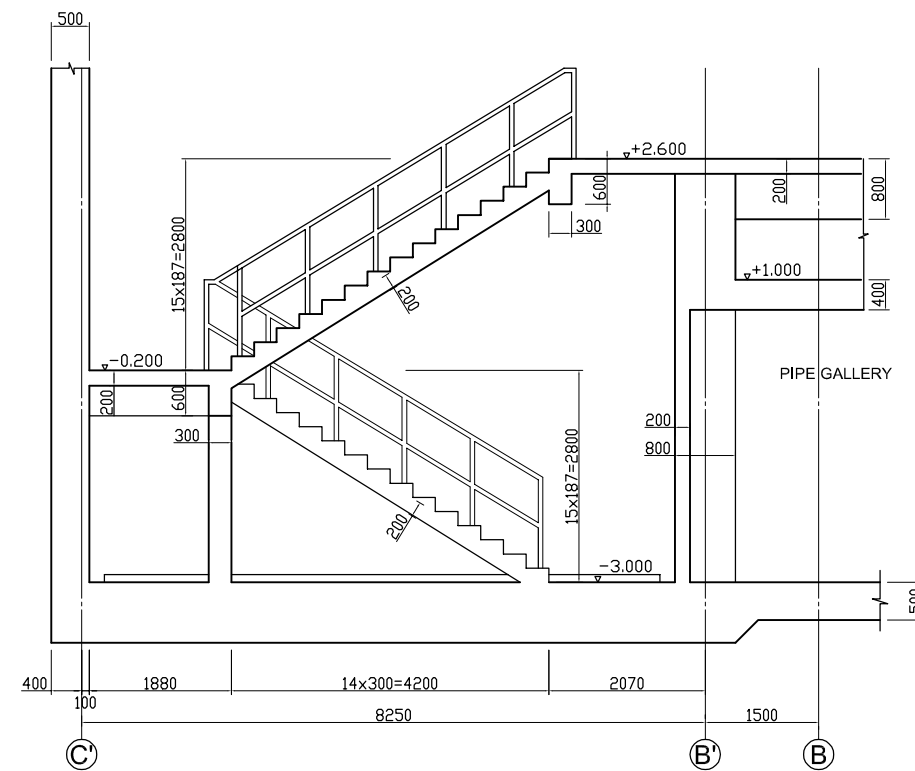
CHECKED
KONDO MASAMI

DATE : JUNE 2001 DWG. No. PE-WWTP - 213 - 02

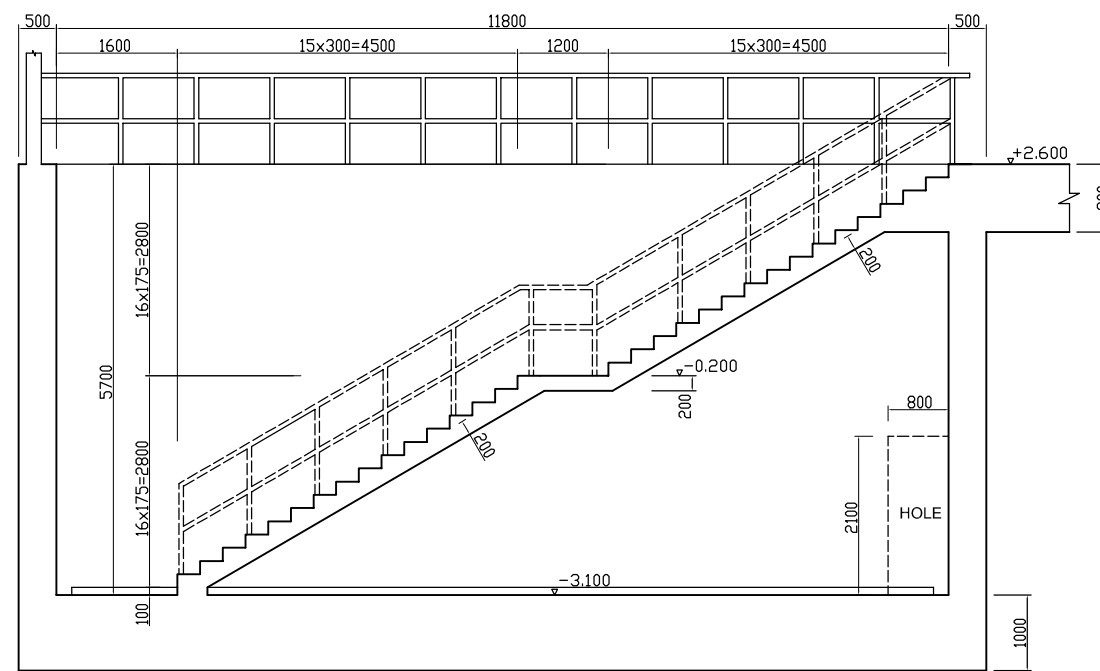
SECTION S4-S4 Scale: 1/50



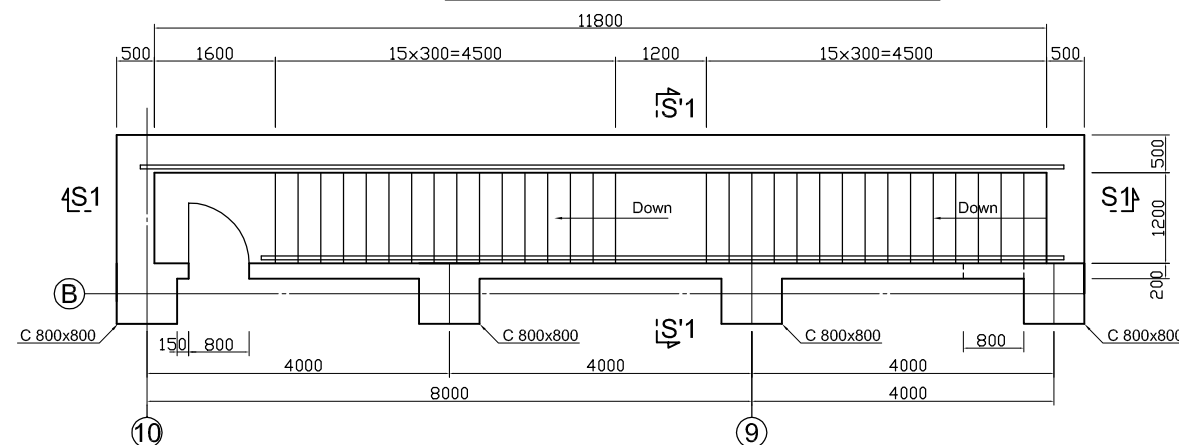
SECTION S2-S2 Scale: 1/50



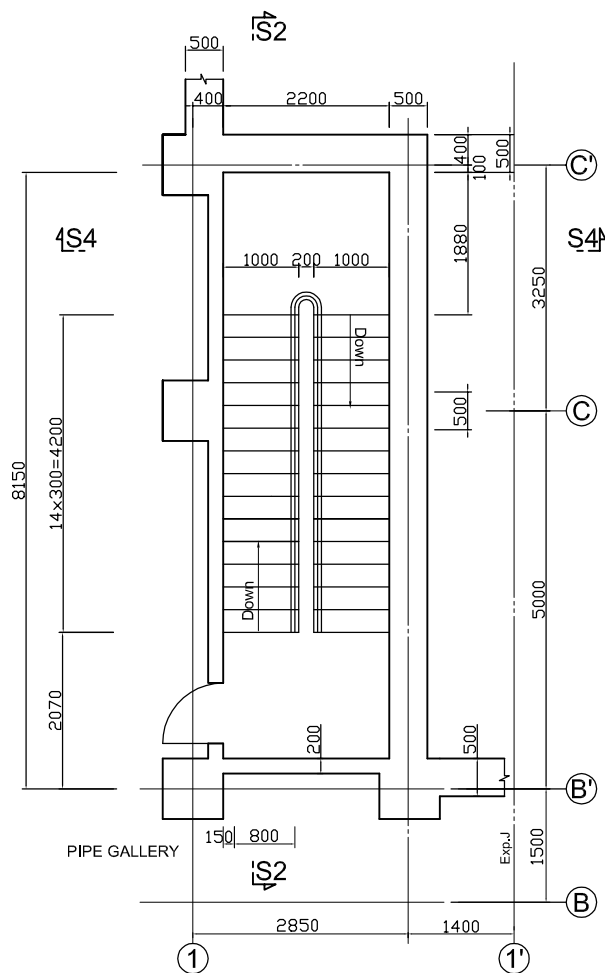
SECTION S1-S1 Scale: 1/50



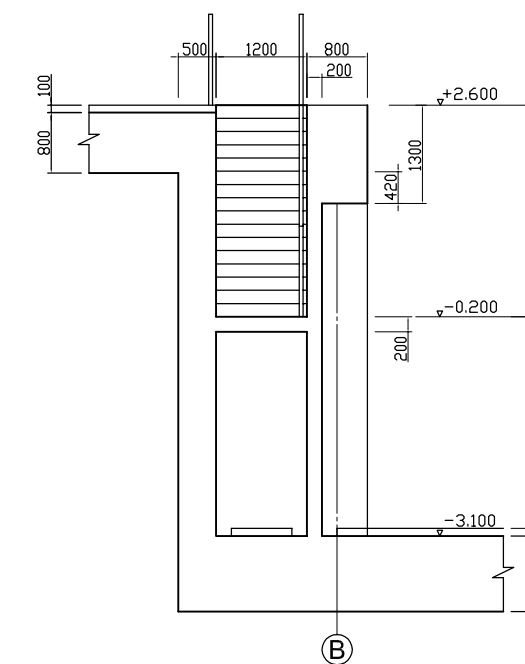
STAIRCASE S2 PLAN Scale: 1/50



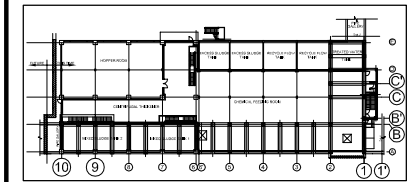
STAIR S1 PLAN Scale: 1/50



SECTION S1'-S1' Scale: 1/50



KEY PLAN



NOTES :

- ALL DIMENSIONS ARE MM UNLESS STATED OTHERWISE
- CONCRETE E21
- LEVELLING CONCRETE G10
- ALL REINFORCEMENT BARS ARE DEFORMED TYPE (CT5 OR EQUIVALENT AS INDICATED IN SPECIFICATION OF PACKAGE E)
- THE SPECIFICATION TO BE REFERRED FOR MORE INFORMATION OF MATERIAL GRADES
- PILE LOCATION SHOWN ON PILE ARRANGEMENT DWG. No. PE - WWTP - 259 - 01
- DETAILS OF R.C PILE SHOWN ON DWG. No. PE - WWTP - 265 - 01

NO.	DATE	DESCRIPTIONS	BY	APRO.
-----	------	--------------	----	-------

REVISIONS

PROJECT MANAGEMENT UNIT FOR
HO CHI MINH CITY
WATER ENVIRONMENT IMPROVEMENT

THE DETAILED DESIGN ON HO CHI MINH CITY
WATER ENVIRONMENT IMPROVEMENT PROJECT
IN THE SOCIALIST REPUBLIC OF VIET NAM

PACKAGE E
WASTE WATER TREATMENT PLANT
DEWATERING AND CENTRIFUGAL
THICKENER BUILDING
STAIRCASE PLAN AND SECTION

SCALE: 1/50

JICA JAPAN INTERNATIONAL COOPERATION
AGENCY (JICA)

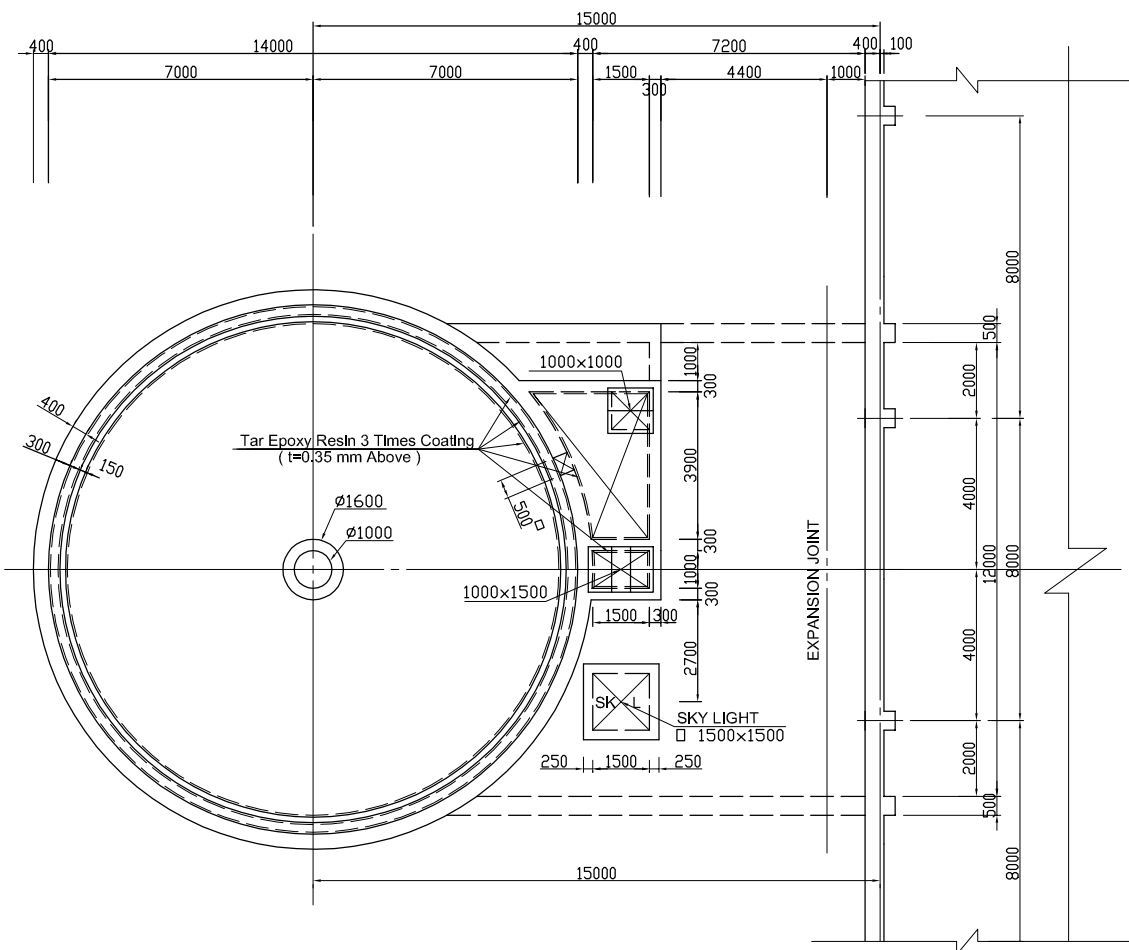
PACIFIC CONSULTANTS INTERNATIONAL

DESIGNED
KIMURA TORU

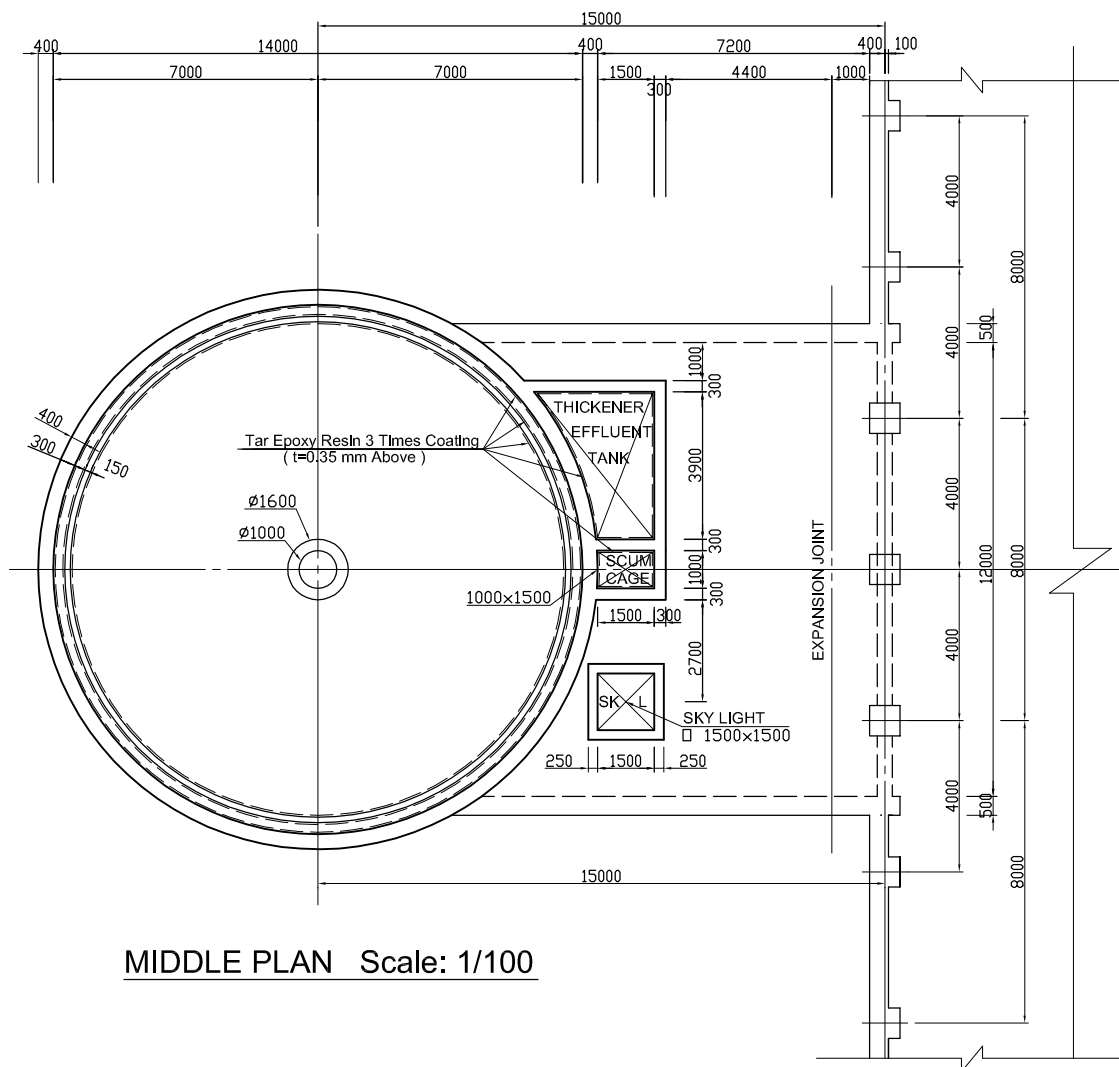
CHECKED
KONDO MASAMI

DATE : JUNE 2001 DWG. No. PE - WWTP - 213 - 03

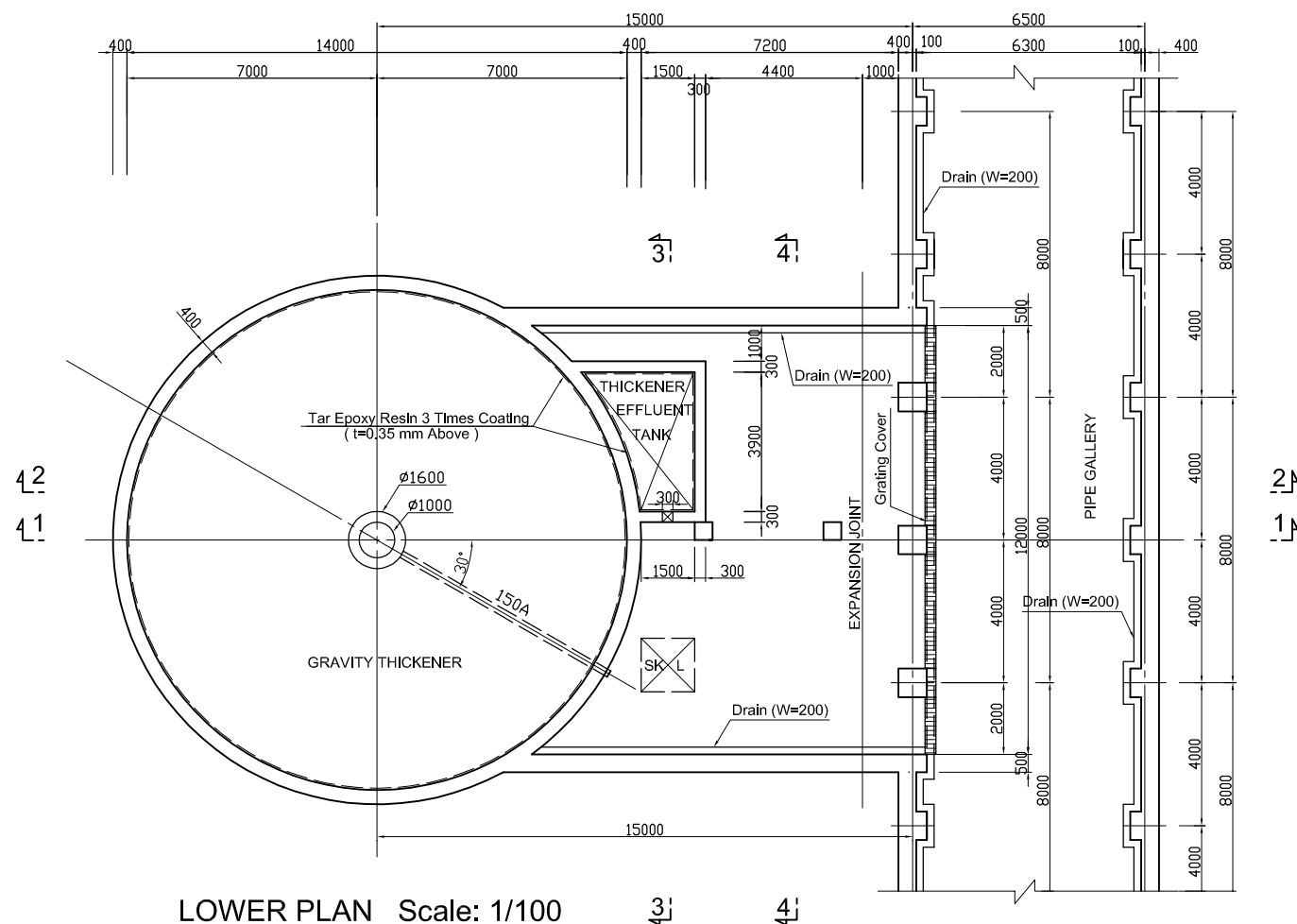
GRAVITY THICKENER PLAN Scale: 1/100



UPPER PLAN Scale: 1/100

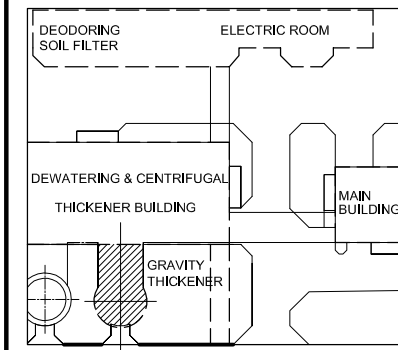


MIDDLE PLAN Scale: 1/100



LOWER PLAN Scale: 1/100

KEY PLAN



NOTES :

- ALL DIMENSIONS ARE MM UNLESS STATED OTHERWISE
- CONCRETE E21
- LEVELLING CONCRETE G10
- ALL REINFORCEMENT BARS ARE DEFORMED TYPE (CT5 OR EQUIVALENT AS INDICATED IN SPECIFICATION OF PACKAGE E)
- THE SPECIFICATION TO BE REFERRED FOR MORE INFORMATION OF MATERIAL GRADES

NO.	DATE	DESCRIPTIONS	BY	APRO.

REVISIONS

PROJECT MANAGEMENT UNIT FOR
HO CHI MINH CITY
WATER ENVIRONMENT IMPROVEMENT

THE DETAILED DESIGN ON HO CHI MINH CITY
WATER ENVIRONMENT IMPROVEMENT PROJECT
IN THE SOCIALIST REPUBLIC OF VIET NAM

PACKAGE E
WASTEWATER TREATMENT PLANT

GRAVITY THICKENER PLAN

SCALE: 1 / 100

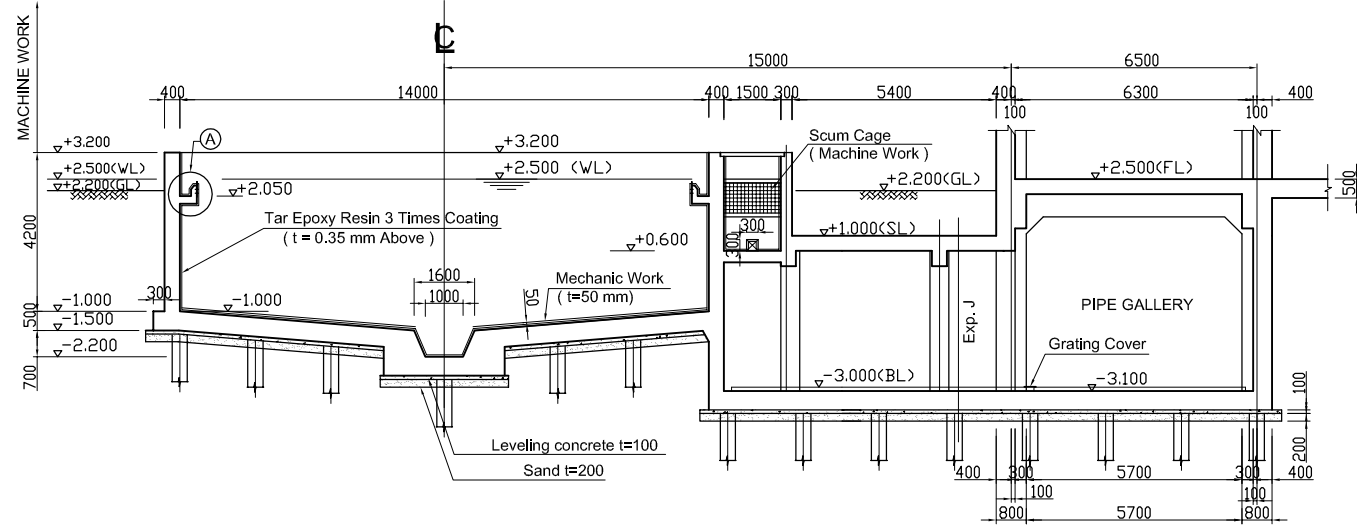
JICA JAPAN INTERNATIONAL COOPERATION AGENCY (JICA)

PACIFIC CONSULTANTS INTERNATIONAL

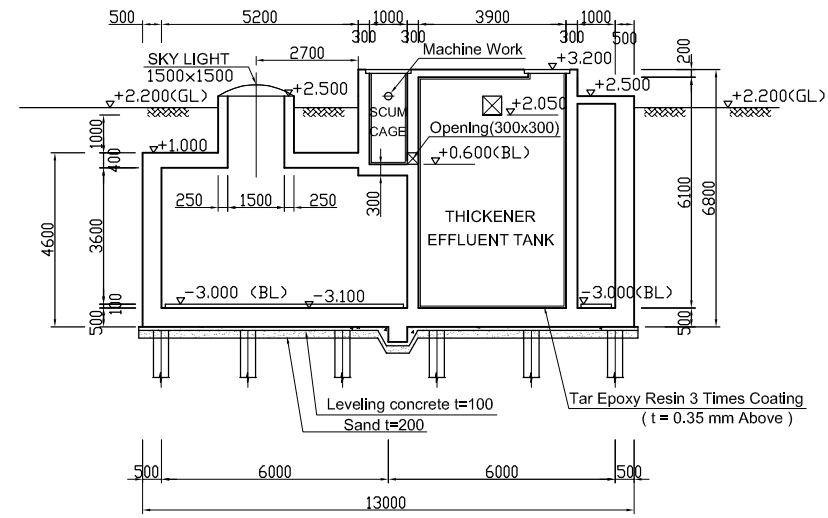
DESIGNED KIMURA TORU CHECKED KONDO MASAMI

DATE : JUNE 2001 DWG. No. PE - WWTP - 214 - 01

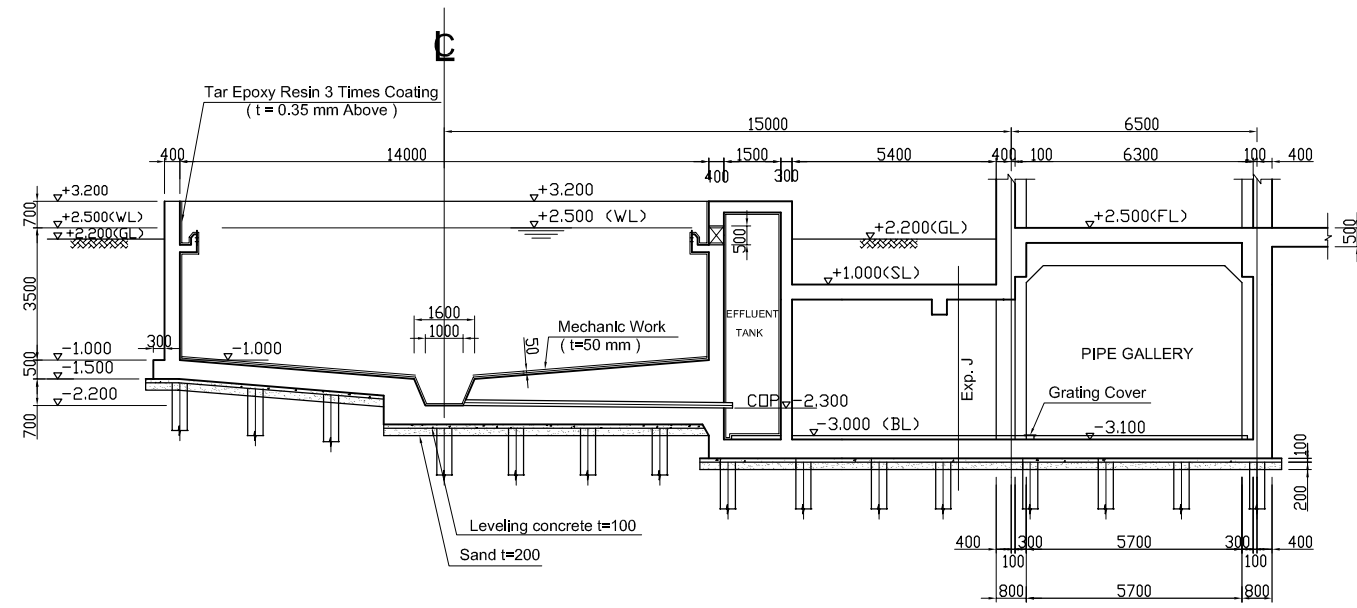
GRAVITY THICKENER SECTION Scale: 1/100



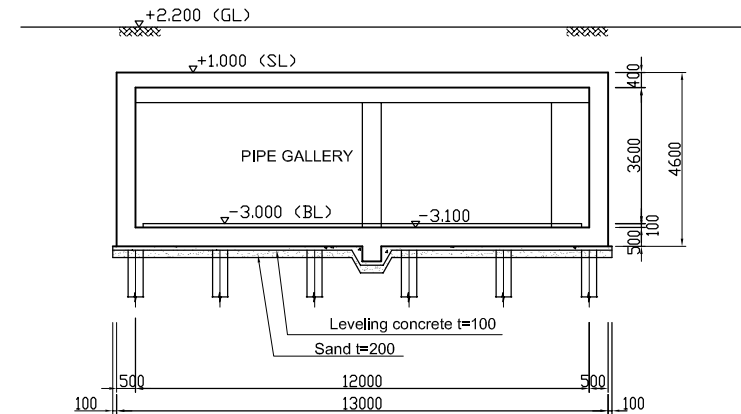
SECTION 1-1 Scale: 1/100



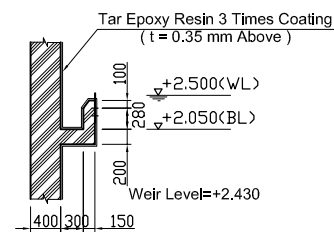
SECTION 3-3 Scale: 1/100



SECTION 2-2 Scale: 1/100

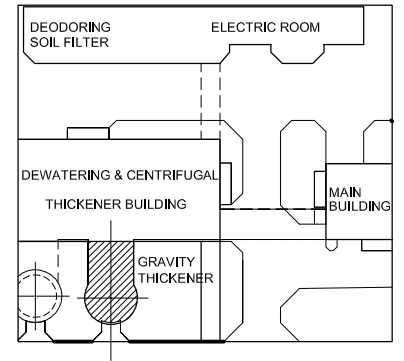


SECTION 4-4 Scale: 1/100



PART DETAIL Scale: 1/50

KEY PLAN



NOTES :

- ALL DIMENSIONS ARE MM UNLESS STATED OTHERWISE
- CONCRETE E21
- LEVELLING CONCRETE G10
- ALL REINFORCEMENT BARS ARE DEFORMED TYPE (CT5 OR EQUIVALENT AS INDICATED IN SPECIFICATION OF PACKAGE E)
- THE SPECIFICATION TO BE REFERRED FOR MORE INFORMATION OF MATERIAL GRADES
- PILE LOCATION SHOWN ON PILE ARRANGEMENT DWG. No. PE - WWTP - 260 - 01
- DETAILS OF R.C PILE SHOWN ON DWG. No. PE - WWTP - 265 - 01

NO.	DATE	DESCRIPTIONS	BY	APRO.

REVISIONS

PROJECT MANAGEMENT UNIT FOR
HO CHI MINH CITY
WATER ENVIRONMENT IMPROVEMENT

THE DETAILED DESIGN ON HO CHI MINH CITY
WATER ENVIRONMENT IMPROVEMENT PROJECT
IN THE SOCIALIST REPUBLIC OF VIET NAM

PACKAGE E
WASTE WATER TREATMENT PLANT

GRAVITY THICKENER
SECTION

SCALE: 1 / 100

JICA JAPAN INTERNATIONAL COOPERATION
AGENCY (JICA)

PACIFIC CONSULTANTS INTERNATIONAL

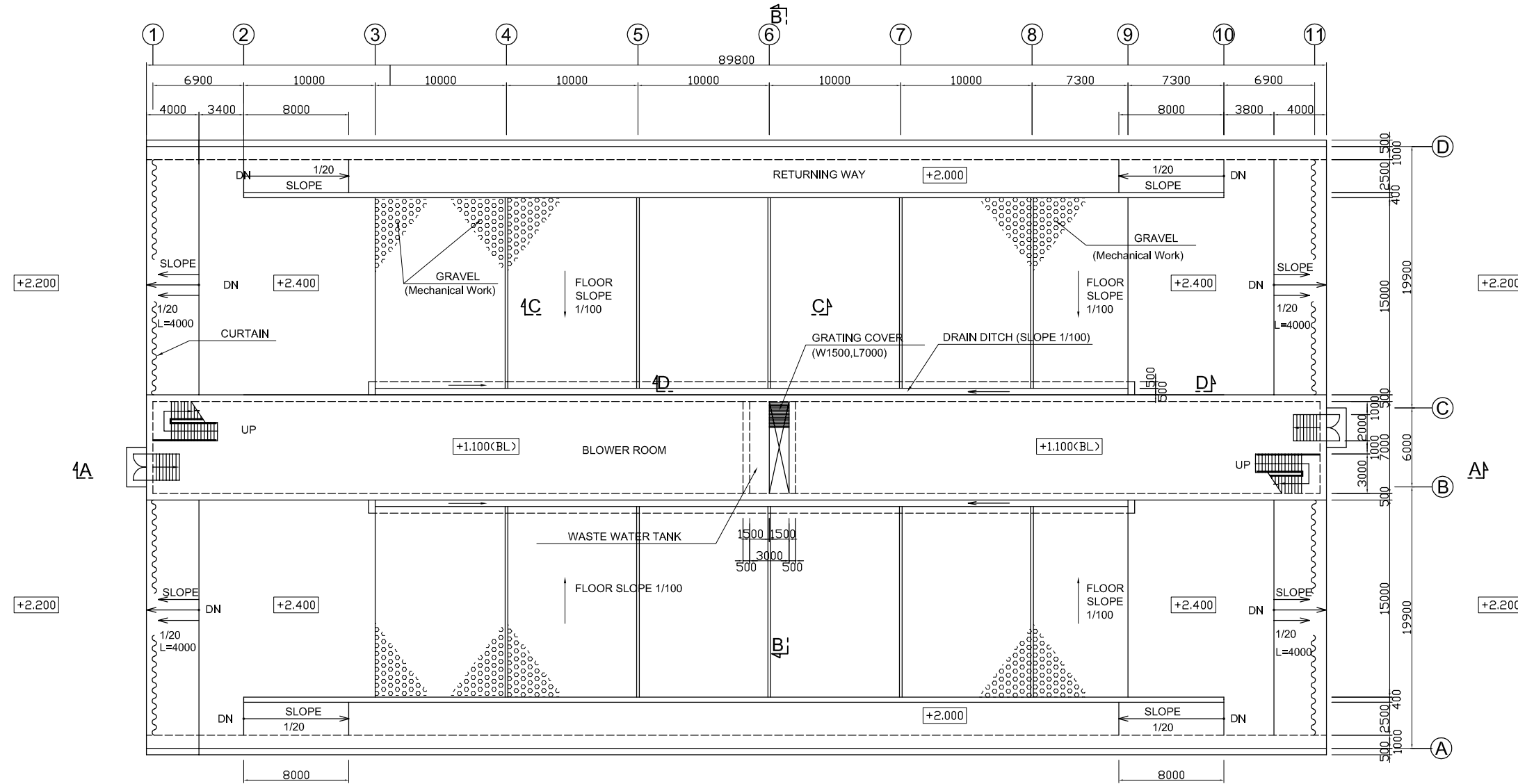
DESIGNED
KIMURA TORU

CHECKED
KONDO MASAMI

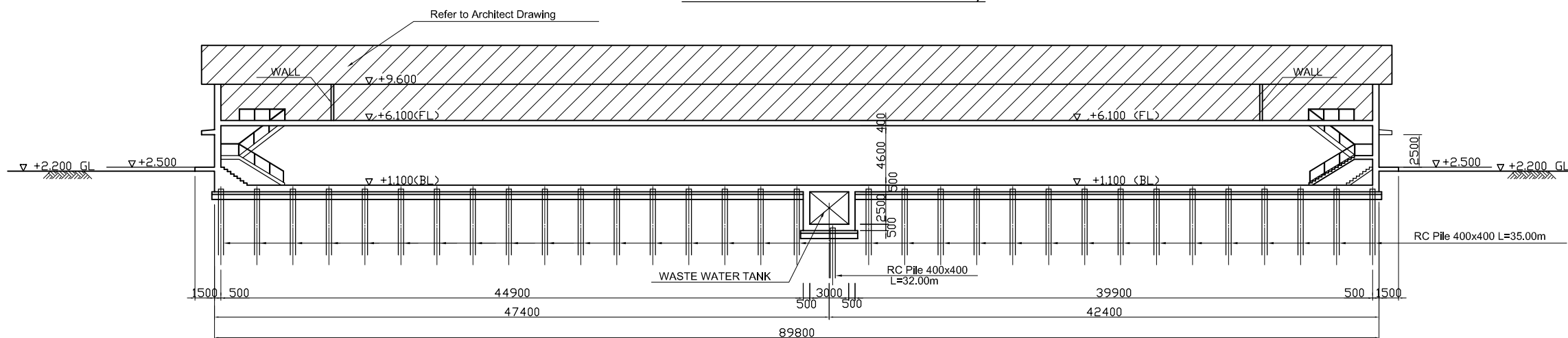
DATE : JUNE 2001 DWG. No. PE - WWTP - 214 - 02

COMPOST PLANT PLAN and SECTION (No.1)

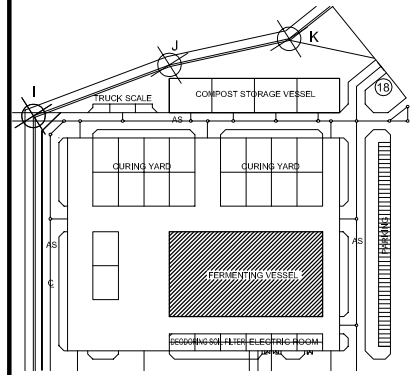
FERMENTING VESSEL PLAN Scale: 1/200



SECTION A - A Scale: 1/200



KEY PLAN



NOTES :

- ALL DIMENSIONS ARE MM UNLESS STATED OTHERWISE
- CONCRETE E21
- LEVELLING CONCRETE G10
- ALL REINFORCEMENT BARS ARE DEFORMED TYPE (CT5 OR EQUIVALENT AS INDICATED IN SPECIFICATION OF PACKAGE E)
- THE SPECIFICATION TO BE REFERRED FOR MORE INFORMATION OF MATERIAL GRADES
- PILE LOCATION SHOWN ON PILE ARRANGEMENT DWG. No. PE - WWTP - 261-01
- DETAILS OF R.C PILE SHOWN ON DWG. No. PE - WWTP - 265 - 01

NO.	DATE	DESCRIPTIONS	BY	APRO.

REVISIONS

PROJECT MANAGEMENT UNIT FOR
HO CHI MINH CITY
WATER ENVIRONMENT IMPROVEMENT

THE DETAILED DESIGN ON HO CHI MINH CITY
WATER ENVIRONMENT IMPROVEMENT PROJECT
IN THE SOCIALIST REPUBLIC OF VIET NAM

PACKAGE E
WASTEWATER TREATMENT PLANT
**COMPOST PLANT PLAN
and SECTION (No.1)**

SCALE: 1/200

JICA JAPAN INTERNATIONAL COOPERATION
AGENCY (JICA)

PACIFIC CONSULTANTS INTERNATIONAL

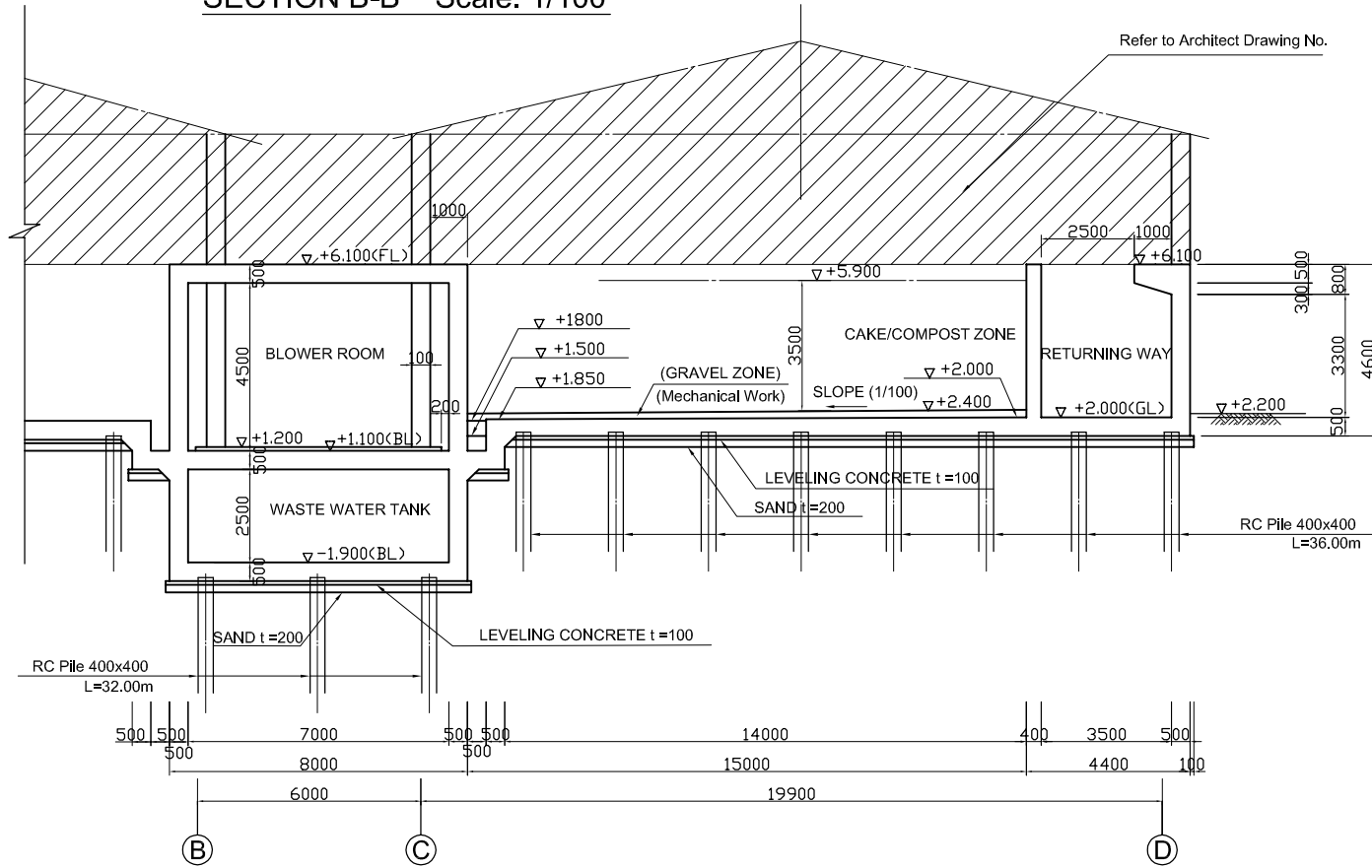
DESIGNED
KIMURA TORU

CHECKED
KONDO MASAMI

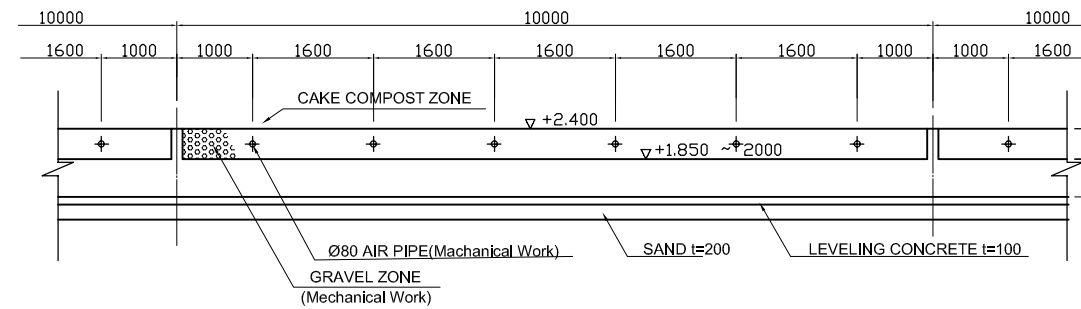
DATE : JUNE 2001 DWG. No. PE-WWTP - 215 - 01

COMPOST PLANT PLAN and SECTION (No.2) Scale: 1/100

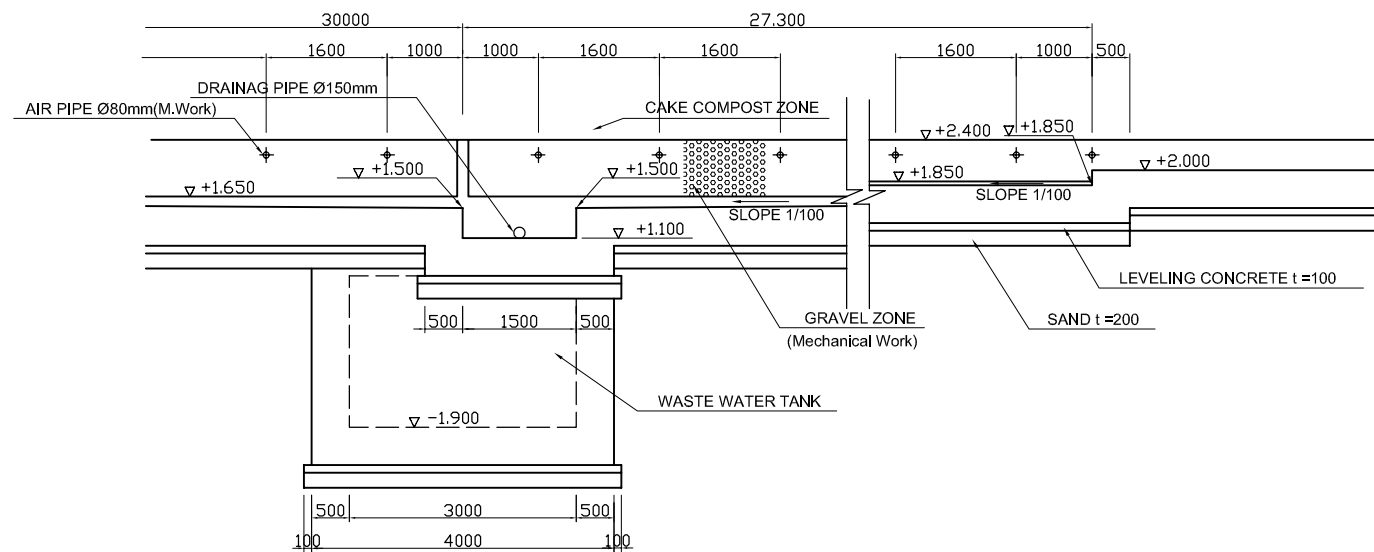
SECTION B-B Scale: 1/100



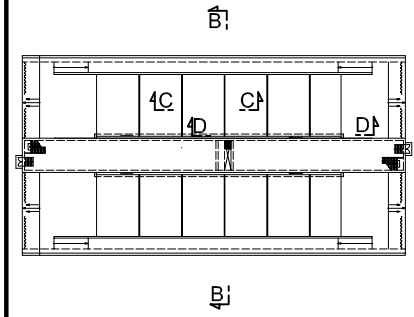
SECTION C-C Scale: 1/50



SECTION D-D Scale: 1/50



KEY PLAN



NOTES :

- ALL DIMENSIONS ARE MM UNLESS STATED OTHERWISE
- CONCRETE E21
- LEVELLING CONCRETE G10
- ALL REINFORCEMENT BARS ARE DEFORMED TYPE (CT5 OR EQUIVALENT AS INDICATED IN SPECIFICATION OF PACKAGE E)
- THE SPECIFICATION TO BE REFERRED FOR MORE INFORMATION OF MATERIAL GRADES
- PILE LOCATION SHOWN ON PILE ARRANGEMENT DWG. No. PE - WWTP - 261-01
- DETAILS OF R.C PILE SHOWN ON DWG. No. PE - WWTP - 265-01

NO.	DATE	DESCRIPTIONS	BY	APRO.

REVISIONS

PROJECT MANAGEMENT UNIT FOR
HO CHI MINH CITY
WATER ENVIRONMENT IMPROVEMENT

THE DETAILED DESIGN ON HO CHI MINH CITY
WATER ENVIRONMENT IMPROVEMENT PROJECT
IN THE SOCIALIST REPUBLIC OF VIET NAM

PACKAGE E
WASTEWATER TREATMENT PLANT
**COMPOST PLANT PLAN
and SECTION (No.2)**

SCALE : 1/50,1/100.

JICA JAPAN INTERNATIONAL COOPERATION AGENCY (JICA)

PACIFIC CONSULTANTS INTERNATIONAL

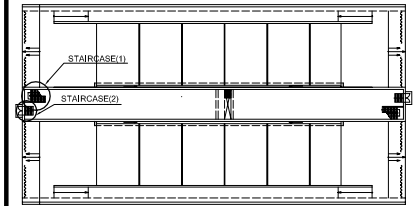
DESIGNED
KIMURA TORU

CHECKED
KONDO MASAMI

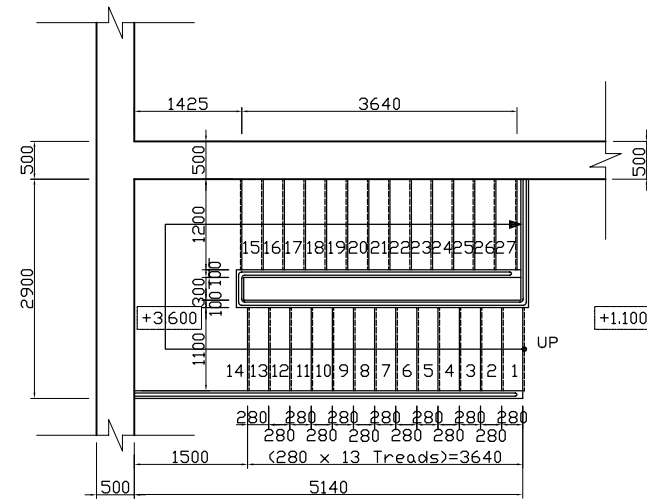
DATE : JUNE 2001 DWG. No. PE - WWTP - 215-02

COMPOST PLANT PLAN and SECTION (No.3)

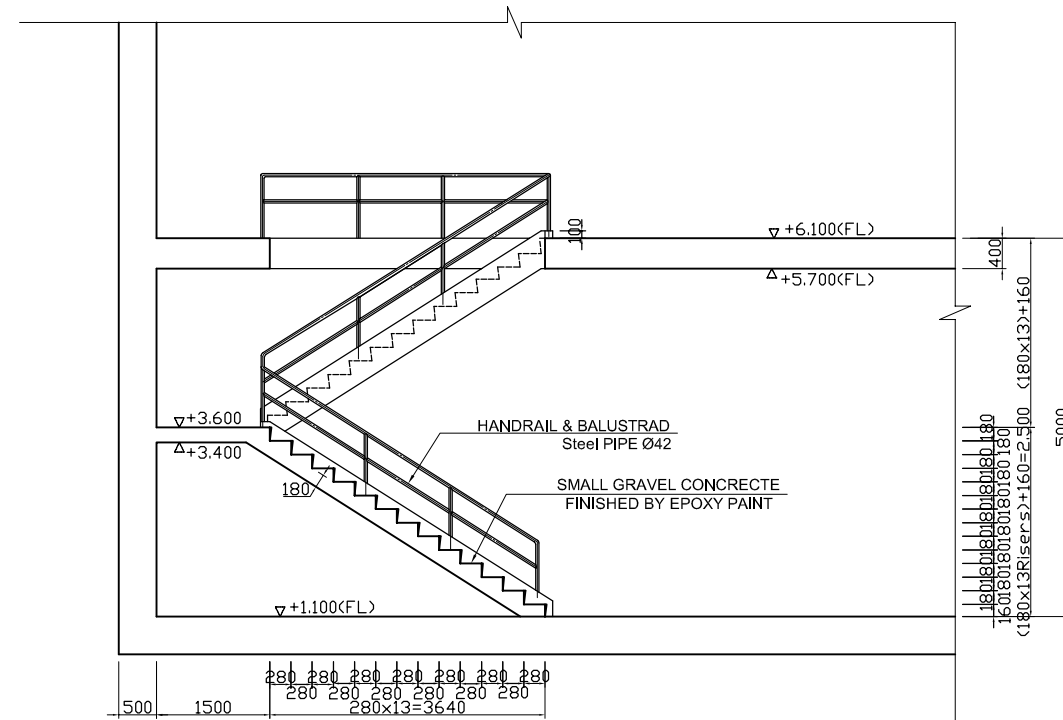
KEY PLAN



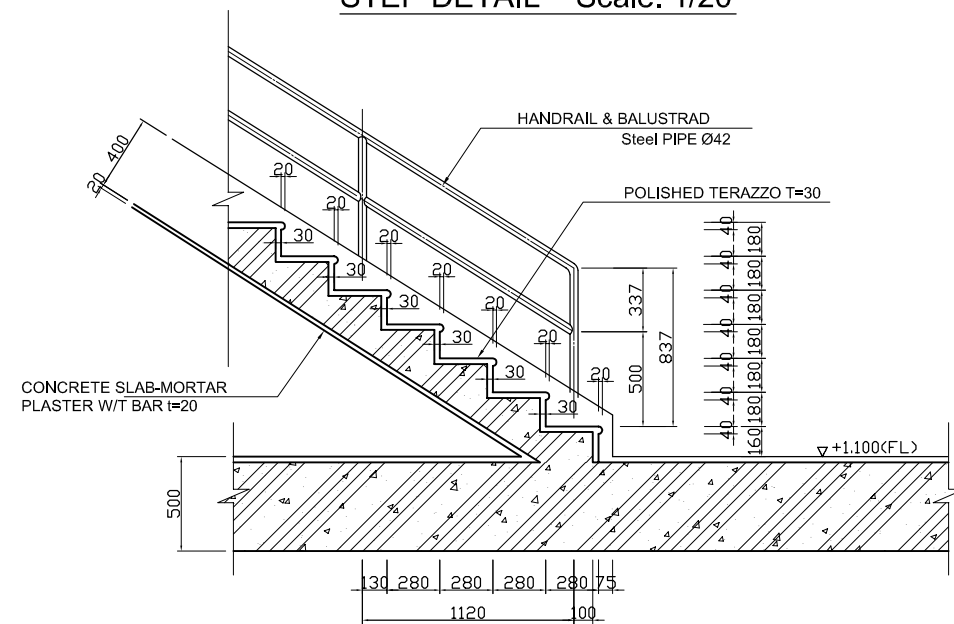
STAIRCASE PLAN (1) Scale: 1/50



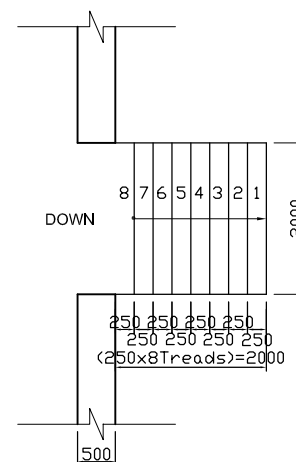
STAIRCASE SECTION (1) Scale: 1/50



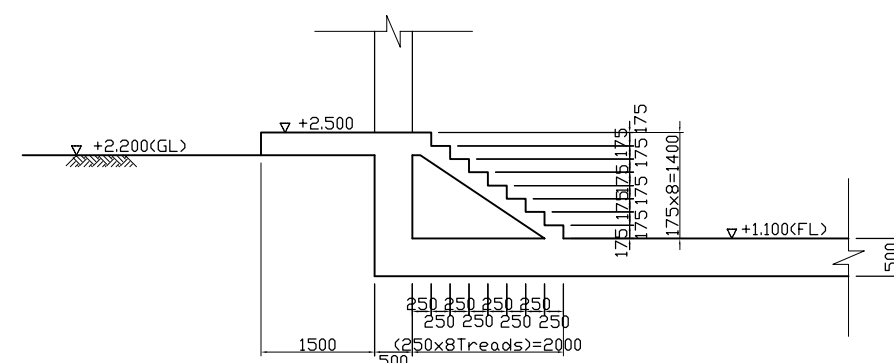
STEP DETAIL Scale: 1/20



STAIRCASE PLAN (2) Scale: 1/50



STAIRCASE SECTION (2) Scale: 1/50



NOTES :

- ALL DIMENSIONS ARE MM UNLESS STATED OTHERWISE
- CONCRETE E21
- LEVELLING CONCRETE G10
- ALL REINFORCEMENT BARS ARE DEFORMED TYPE (CT5 OR EQUIVALENT AS INDICATED IN SPECIFICATION OF PACKAGE E)
- THE SPECIFICATION TO BE REFERRED FOR MORE INFORMATION OF MATERIAL GRADES
- PILE LOCATION SHOWN ON PILE ARRANGEMENT DWG. No. PE - WWTP - 261-01
- DETAILS OF R.C PILE SHOWN ON DWG. No. PE - WWTP - 265 - 01

NO.	DATE	DESCRIPTIONS	BY	APRO.
-----	------	--------------	----	-------

REVISIONS

PROJECT MANAGEMENT UNIT FOR
HO CHI MINH CITY
WATER ENVIRONMENT IMPROVEMENT

THE DETAILED DESIGN ON HO CHI MINH CITY
WATER ENVIRONMENT IMPROVEMENT PROJECT
IN THE SOCIALIST REPUBLIC OF VIET NAM

PACKAGE E
WASTEWATER TREATMENT PLANT
**COMPOST PLANT PLAN
and SECTION (No.3)**

SCALE : 1/20, 1/50

JICA JAPAN INTERNATIONAL COOPERATION AGENCY (JICA)

PACIFIC CONSULTANTS INTERNATIONAL

DESIGNED
KIMURA TORU

CHECKED
KONDO MASAMI

DATE : JUNE 2001

DWG. No. PE - WWTP - 215 - 03