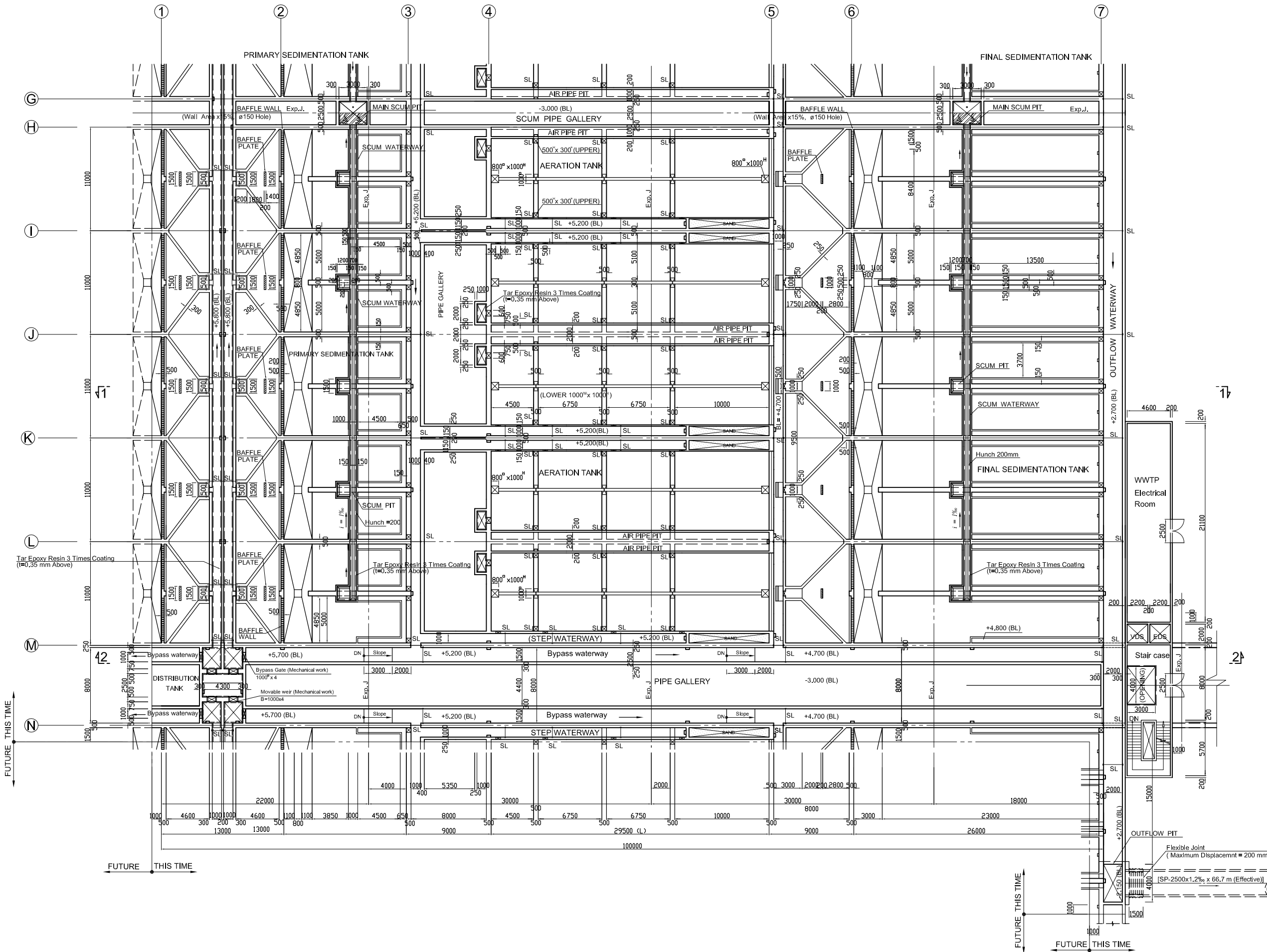
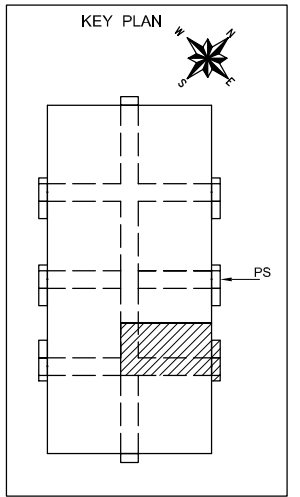


PLAN (No. 2 - 2) Scale: 1/200



NOTES :

- ALL DIMENSIONS ARE MM UNLESS STATED OTHERWISE
- CONCRETE E21
- LEVELLING CONCRETE G10
- ALL REINFORCEMENT BARS ARE DEFORMED TYPE (CT5 OR EQUIVALENT AS INDICATED IN SPECIFICATION OF PACKAGE E)
- THE SPECIFICATION TO BE REFERRED FOR MORE INFORMATION OF MATERIAL GRADES
- SL - STOP LOG

NO.	DATE	DESCRIPTIONS	BY	APRO.

REVISIONS

PROJECT MANAGEMENT UNIT FOR
HO CHI MINH CITY
WATER ENVIRONMENT IMPROVEMENT

THE DETAILED DESIGN STUDY ON HO CHI MINH CITY
WATER ENVIRONMENT IMPROVEMENT PROJECT
IN THE SOCIALIST REPUBLIC OF VIET NAM

PACKAGE E
WASTEWATER TREATMENT PLANT
WASTEWATER TREATMENT PLANT
PLAN (No. 2 - 2)

SCALE : 1 / 200

JICA JAPAN INTERNATIONAL COOPERATION
AGENCY (JICA)

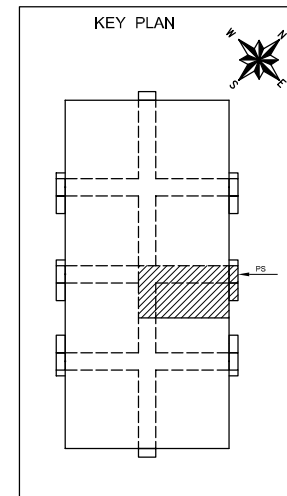
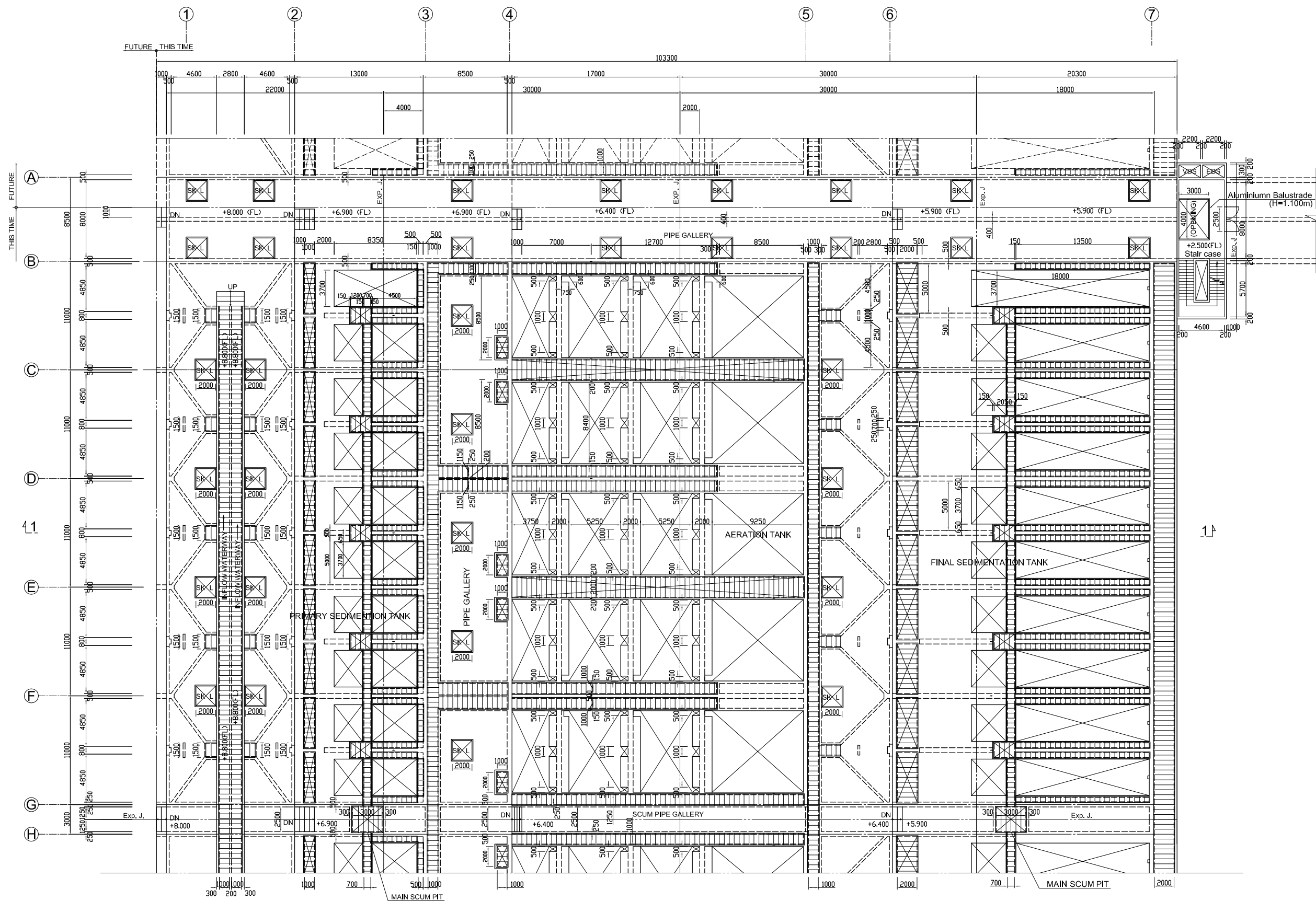
PACIFIC CONSULTANTS INTERNATIONAL

DESIGNED
KIMURA TORU

CHECKED
KONDO MASAMI

DATE : JUNE 2001 DWG. No. PE-WWTP - 203-04

PLAN (No. 3 - 1). Scale: 1/200



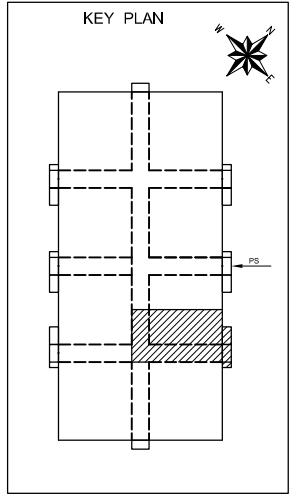
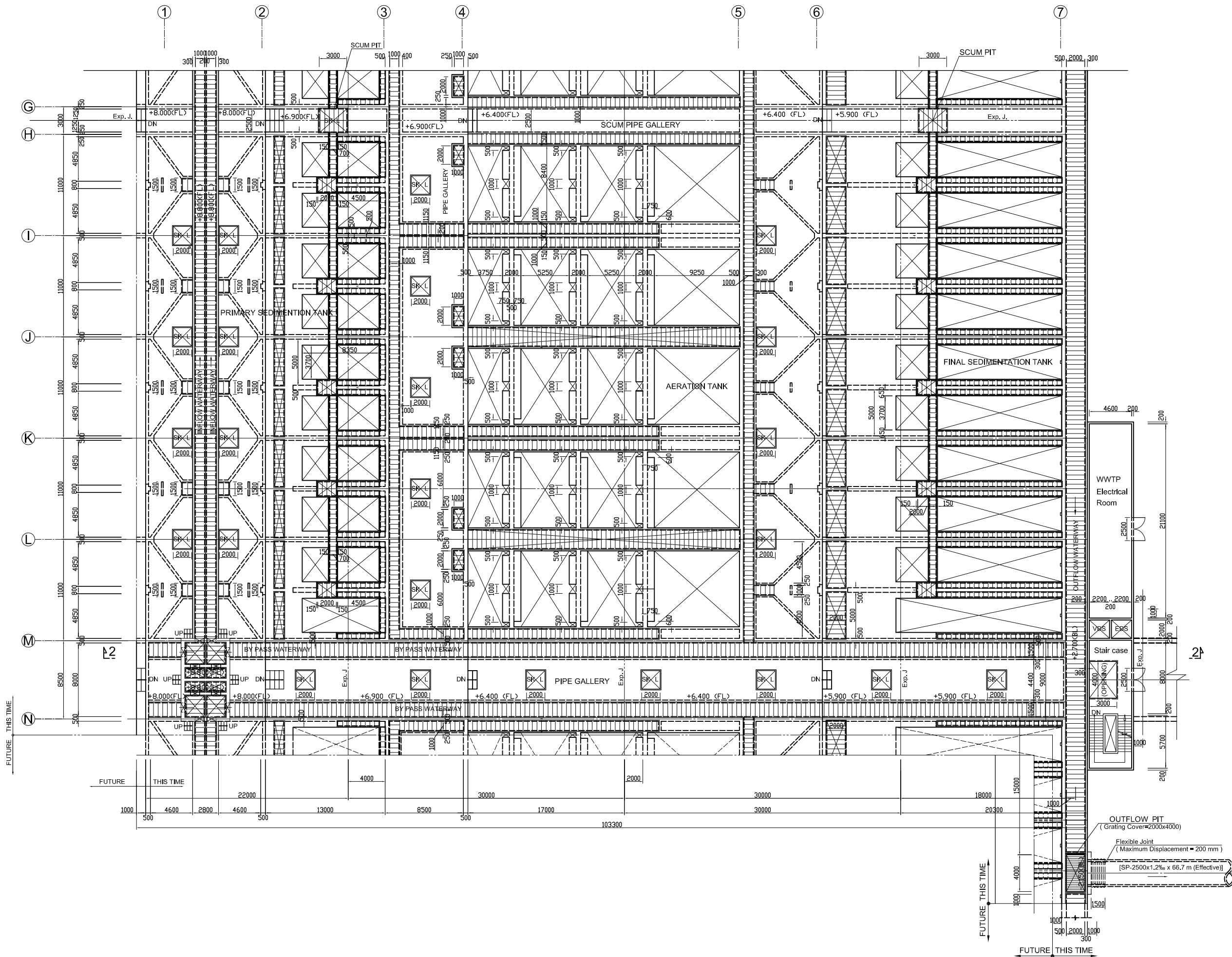
NOTES :

- ALL DIMENSIONS ARE MM UNLESS STATED OTHERWISE
- CONCRETE E21
- LEVELLING CONCRETE G10
- ALL REINFORCEMENT BARS ARE DEFORMED TYPE (CT5 OR EQUIVALENT AS INDICATED IN SPECIFICATION OF PACKAGE E)
- THE SPECIFICATION TO BE REFERRED FOR MORE INFORMATION OF MATERIAL GRADES

- OPEN AREA
- SKY LIGHT
- COVER

NO.	DATE	DESCRIPTIONS	BY	APRO.
REVISIONS				
PROJECT MANAGEMENT UNIT FOR HO CHI MINH CITY WATER ENVIRONMENT IMPROVEMENT				
THE DETAILED DESIGN STUDY ON HO CHI MINH CITY WATER ENVIRONMENT IMPROVEMENT PROJECT IN THE SOCIALIST REPUBLIC OF VIET NAM				
PACKAGE E WASTEWATER TREATMENT PLANT				
WASTEWATER TREATMENT PLANT PLAN (No. 3 - 1)				
SCALE: 1 / 200				
JAPAN INTERNATIONAL COOPERATION AGENCY (JICA)				
PACIFIC CONSULTANTS INTERNATIONAL				
DESIGNED KIMURA TORU		CHECKED KONDO MASAMI		
DATE : JUNE 2001		DWG. No. PE - WWTP - 203 - 05		

PLAN (No. 3 - 2). Scale: 1/200



NOTES :

- ALL DIMENSIONS ARE MM UNLESS STATED OTHERWISE
- CONCRETE E21
- LEVELLING CONCRETE G10
- ALL REINFORCEMENT BARS ARE DEFORMED TYPE (CT5 OR EQUIVALENT AS INDICATED IN SPECIFICATION OF PACKAGE E)
- THE SPECIFICATION TO BE REFERRED FOR MORE INFORMATION OF MATERIAL GRADES

- OPEN AREA
- SKY LIGHT
- COVER

NO.	DATE	DESCRIPTIONS	BY	APRO.

REVISIONS

PROJECT MANAGEMENT UNIT FOR
HO CHI MINH CITY
WATER ENVIRONMENT IMPROVEMENT

THE DETAILED DESIGN STUDY ON HO CHI MINH CITY
WATER ENVIRONMENT IMPROVEMENT PROJECT
IN THE SOCIALIST REPUBLIC OF VIET NAM

PACKAGE E
WASTEWATER TREATMENT PLANT

WASTEWATER TREATMENT PLANT
PLAN (No. 3 - 2)

SCALE: 1 / 200

JICA JAPAN INTERNATIONAL COOPERATION
AGENCY (JICA)

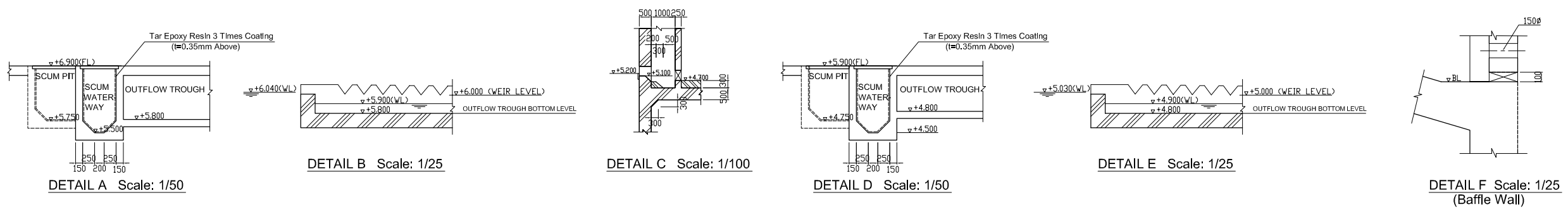
PACIFIC CONSULTANTS INTERNATIONAL

DESIGNED
KIMURA TORU

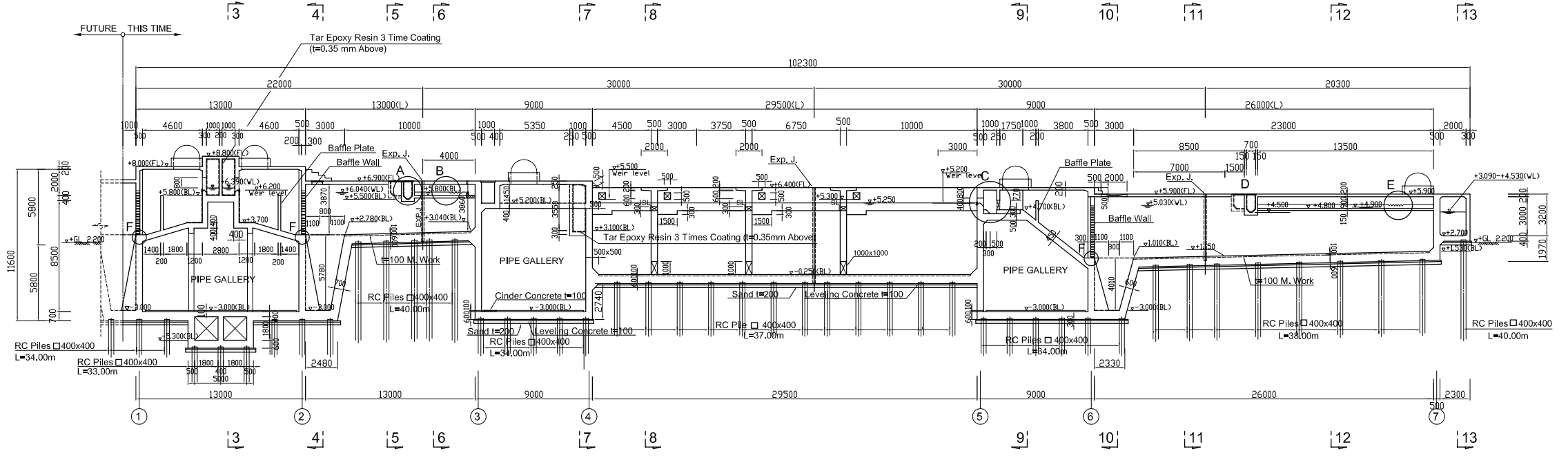
CHECKED
KONDO MASAMI

DATE : JUNE 2001

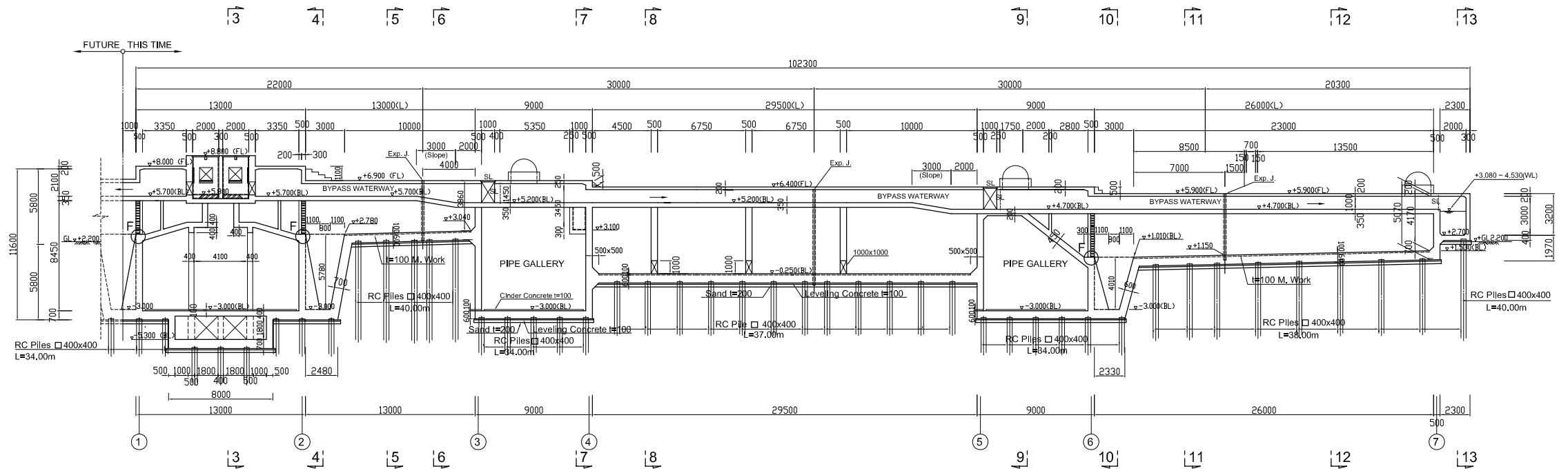
DWG. No. PE - WWTP - 203 - 06



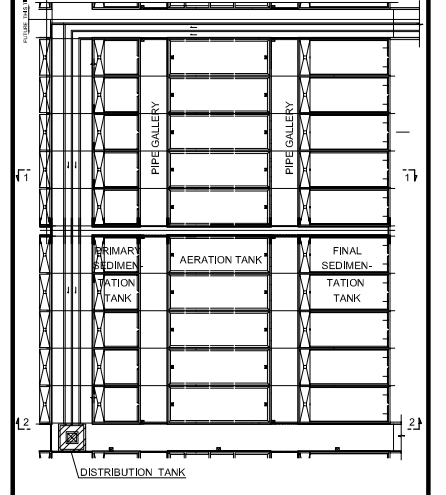
SECTION 1 - 1. Scale: 1/200



SECTION 2 - 2. Scale: 1/200



KEY PLAN



NOTES :

- ALL DIMENSIONS ARE MM UNLESS STATED OTHERWISE
- CONCRETE E21
- LEVELLING CONCRETE G10
- ALL REINFORCEMENT BARS ARE DEFORMED TYPE (CT5 OR EQUIVALENT AS INDICATED IN SPECIFICATION OF PACKAGE E)
- THE SPECIFICATION TO BE REFERRED FOR MORE INFORMATION OF MATERIAL GRADES
- PILE LOCATION SHOWN ON PILE ARRANGEMENT DWG. No. PE - WWTP - 252-01, 02
- DETAILS OF R.C PILE SHOWN ON DWG. No. PE - WWTP - 265 - 01

NO.	DATE	DESCRIPTIONS	BY	APPRO.

REVISIONS

PROJECT MANAGEMENT UNIT FOR
HO CHI MINH CITY
WATER ENVIRONMENT IMPROVEMENT

THE DETAILED DESIGN STUDY ON HO CHI MINH CITY
WATER ENVIRONMENT IMPROVEMENT PROJECT
IN THE SOCIALIST REPUBLIC OF VIET NAM

PACKAGE E
WASTEWATER TREATMENT PLANT
WASTEWATER TREATMENT PLANT
SECTION 1 - 1 & 2 - 2

SCALE : 1/200

JICA JAPAN INTERNATIONAL COOPERATION AGENCY (JICA)

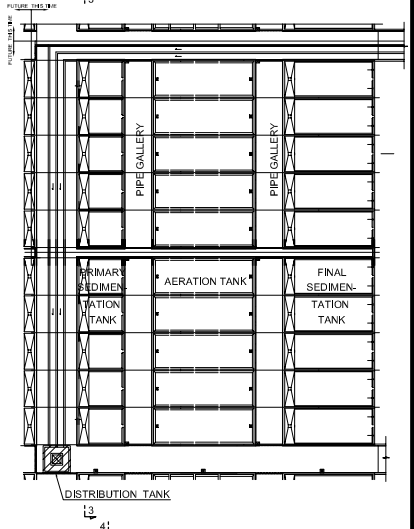
PACIFIC CONSULTANTS INTERNATIONAL

DESIGNED
KIMURA TORU

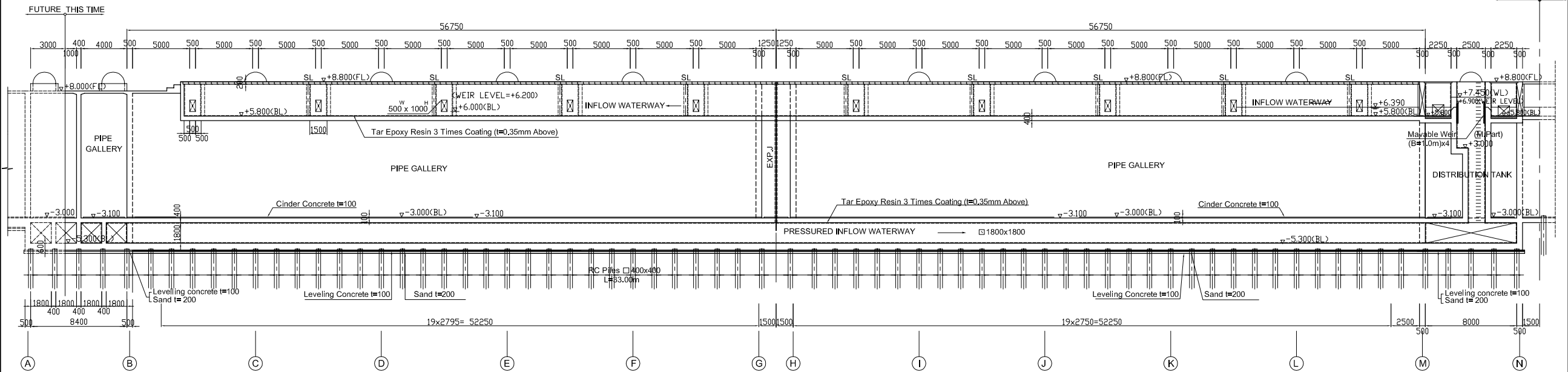
CHECKED
KONDO MASAMI

DATE : JUNE 2001 DWG. No. PE - WWTP - 204-01

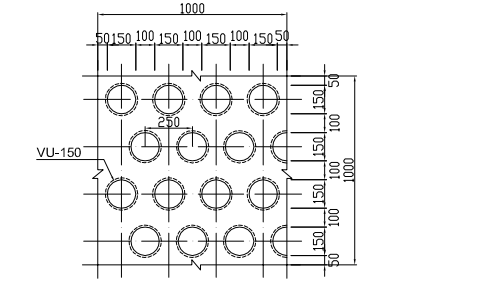
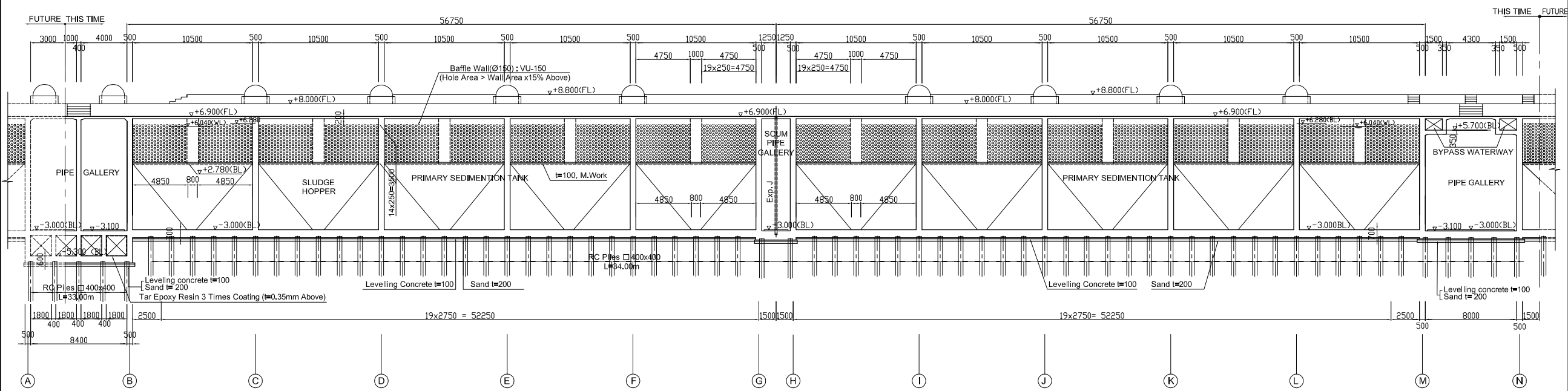
KEY PLAN



SECTION 3 - 3. Scale: 1/200



SECTION 4 - 4. Scale: 1/200



BAFFLE WALL DETAIL. Scale: 1/20
(PRIMARY AND FINAL SEDIMENTATION TANK)

- NOTES :**
- ALL DIMENSIONS ARE MM UNLESS STATED OTHERWISE
 - CONCRETE E21
 - LEVELLING CONCRETE G10
 - ALL REINFORCEMENT BARS ARE DEFORMED TYPE (CT5 OR EQUIVALENT AS INDICATED IN SPECIFICATION OF PACKAGE E)
 - THE SPECIFICATION TO BE REFERRED FOR MORE INFORMATION OF MATERIAL GRADES
 - PILE LOCATION SHOWN ON PILE ARRANGEMENT DWG. No. PE - WWTP - 252-01, 02
 - DETAILS OF R.C PILE SHOWN ON DWG. No. PE - WWTP - 265 - 01

NO.	DATE	DESCRIPTIONS	BY	APRO.
REVISIONS				

PROJECT MANAGEMENT UNIT FOR
HO CHI MINH CITY
WATER ENVIRONMENT IMPROVEMENT

THE DETAILED DESIGN STUDY ON HO CHI MINH CITY
WATER ENVIRONMENT IMPROVEMENT PROJECT
IN THE SOCIALIST REPUBLIC OF VIET NAM

PACKAGE E
WASTEWATER TREATMENT PLANT
WASTEWATER TREATMENT PLANT
SECTION 3 - 3 & 4 - 4

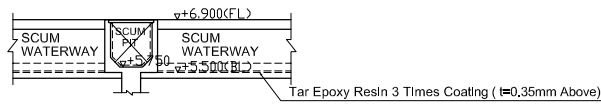
SCALE : 1/200

JICA JAPAN INTERNATIONAL COOPERATION AGENCY (JICA)

PACIFIC CONSULTANTS INTERNATIONAL

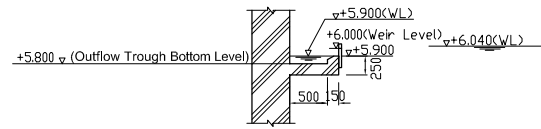
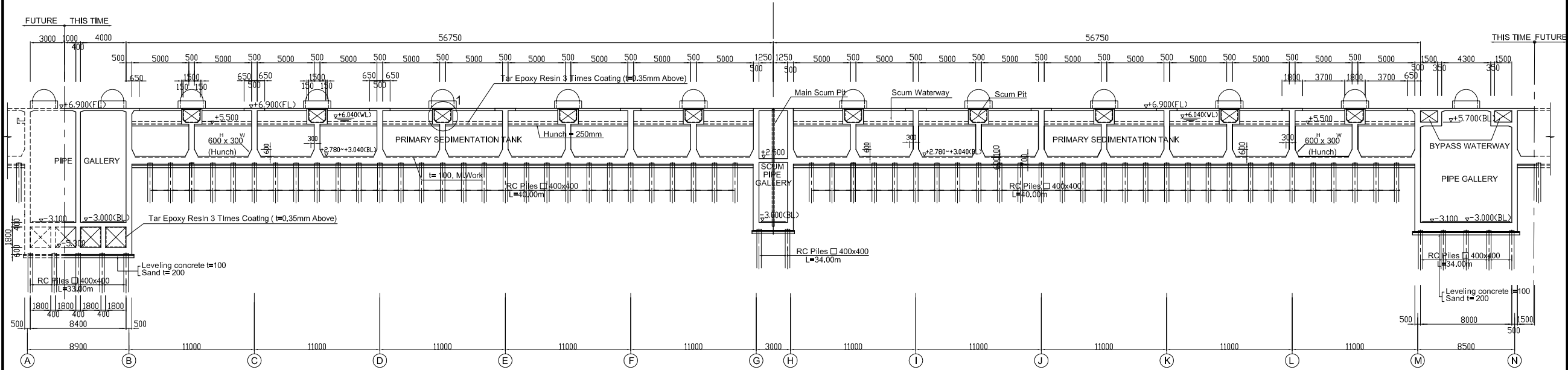
DESIGNED: KIMURA TORU
CHECKED: KONDO MASAMI

DATE : JUNE 2001 DWG. No. PE - WWTP - 204-02



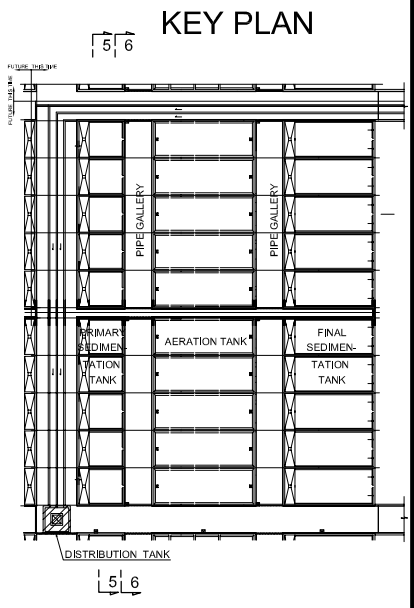
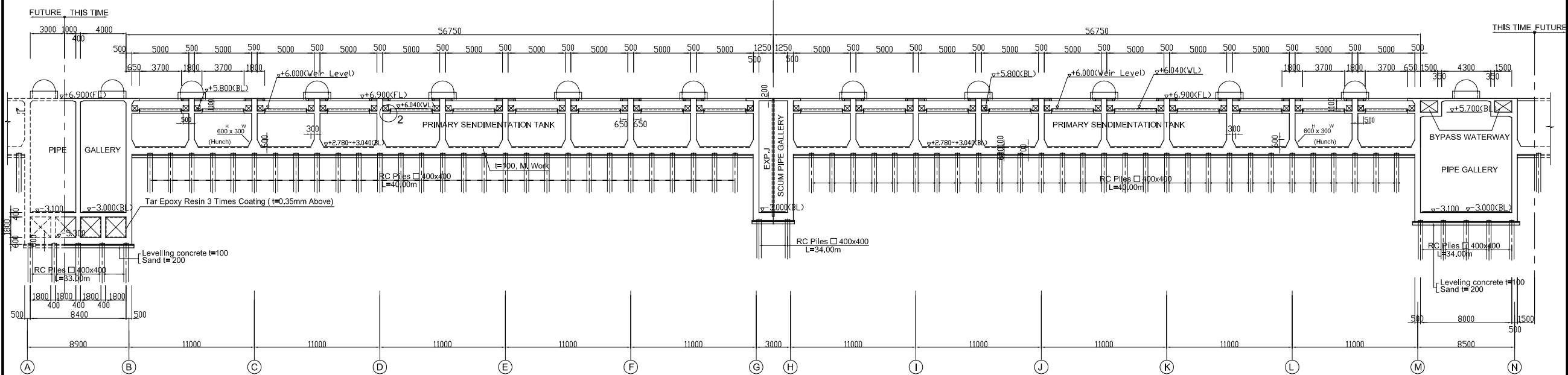
DETAIL 1 Scale: 1/100

SECTION 5-5. Scale: 1/200



DETAIL 2. Scale: 1/50

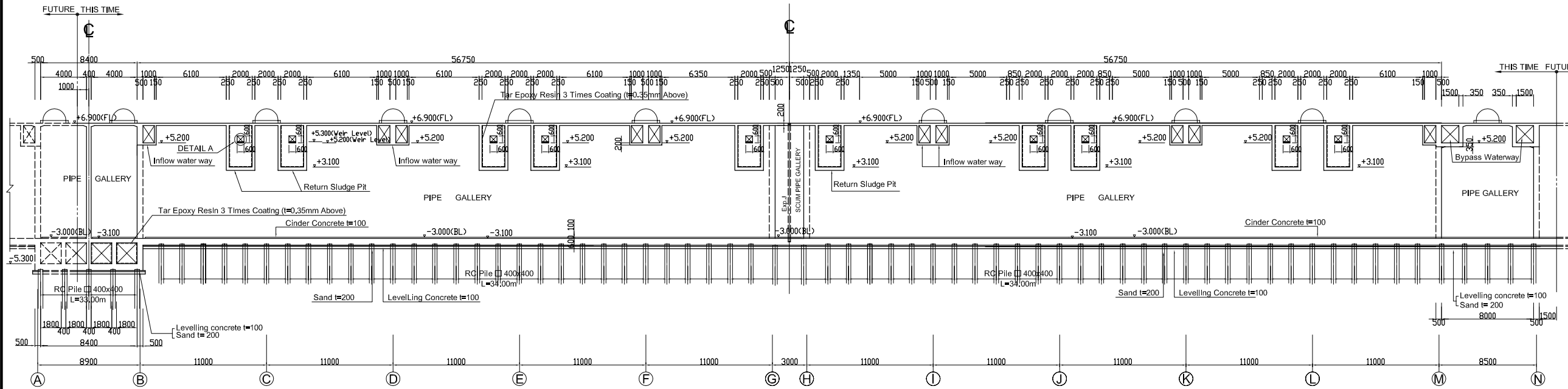
SECTION 6-6. Scale: 1/200



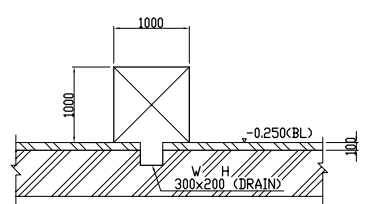
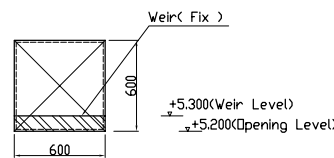
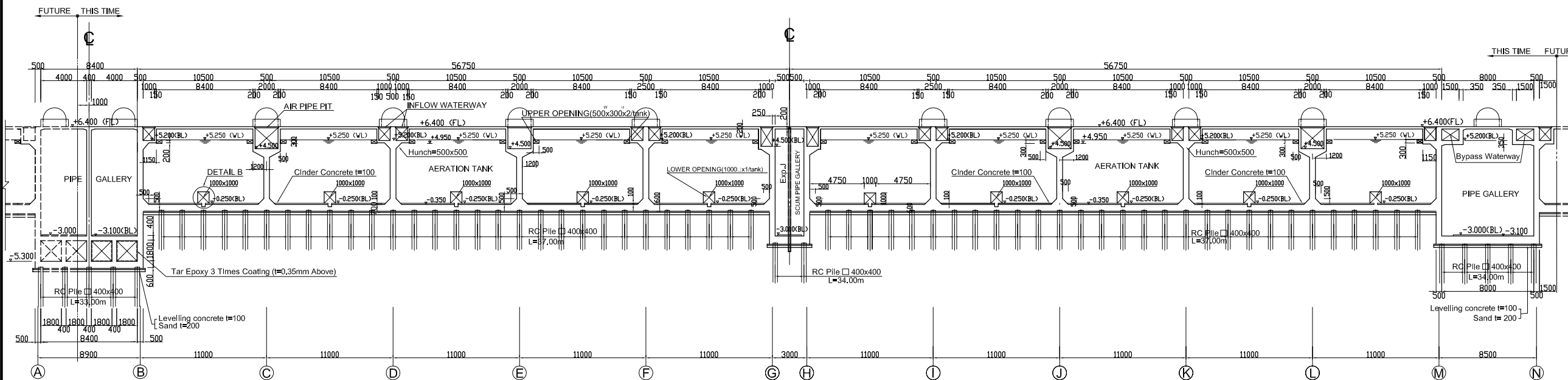
- NOTES :**
- ALL DIMENSIONS ARE MM UNLESS STATED OTHERWISE
 - CONCRETE E21
 - LEVELLING CONCRETE G10
 - ALL REINFORCEMENT BARS ARE DEFORMED TYPE (CT5 OR EQUIVALENT AS INDICATED IN SPECIFICATION OF PACKAGE E)
 - THE SPECIFICATION TO BE REFERRED FOR MORE INFORMATION OF MATERIAL GRADES
 - PILE LOCATION SHOWN ON PILE ARRANGEMENT DWG. No. PE - WWTP - 252-01.02
 - DETAILS OF R.C PILE SHOWN ON DWG. No. PE - WWTP - 265 - 01

NO.	DATE	DESCRIPTIONS	BY	APRO.
REVISIONS				
PROJECT MANAGEMENT UNIT FOR HO CHI MINH CITY WATER ENVIRONMENT IMPROVEMENT				
THE DETAILED DESIGN STUDY ON HO CHI MINH CITY WATER ENVIRONMENT IMPROVEMENT PROJECT IN THE SOCIALIST REPUBLIC OF VIET NAM				
PACKAGE E WASTEWATER TREATMENT PLANT WASTEWATER TREATMENT PLANT SECTION 5-5 & 6-6				
SCALE : 1/200				
JAPAN INTERNATIONAL COOPERATION AGENCY (JICA)				
PACIFIC CONSULTANTS INTERNATIONAL				
DESIGNED KIMURA TORU		CHECKED KONDO MASAMI		
DATE : JUNE 2001		DWG. No. PE - WWTP - 204-03		

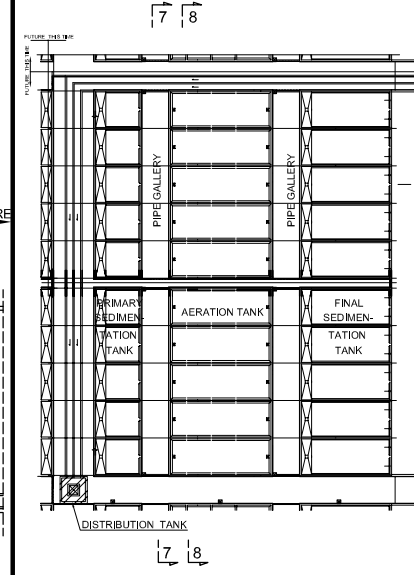
SECTION 7-7. Scale: 1/200



SECTION 8-8. Scale: 1/200



KEY PLAN



NOTES :

- ALL DIMENSIONS ARE MM UNLESS STATED OTHERWISE
- CONCRETE E21
- LEVELLING CONCRETE G10
- ALL REINFORCEMENT BARS ARE DEFORMED TYPE (CT5 OR EQUIVALENT AS INDICATED IN SPECIFICATION OF PACKAGE E)
- THE SPECIFICATION TO BE REFERRED FOR MORE INFORMATION OF MATERIAL GRADES
- PILE LOCATION SHOWN ON PILE ARRANGEMENT DWG. No. PE - WWTP - 252-01,02
- DETAILS OF R.C PILE SHOWN ON DWG. No. PE - WWTP - 265 - 01

NO.	DATE	DESCRIPTIONS	BY	APRO.
REVISIONS				

PROJECT MANAGEMENT UNIT FOR
HO CHI MINH CITY
WATER ENVIRONMENT IMPROVEMENT

THE DETAILED DESIGN STUDY ON HO CHI MINH CITY
WATER ENVIRONMENT IMPROVEMENT PROJECT
IN THE SOCIALIST REPUBLIC OF VIET NAM

PACKAGE E
WASTEWATER TREATMENT PLANT
WASTEWATER TREATMENT PLANT
SECTION 7-7 & 8-8

SCALE : 1/200

JICA JAPAN INTERNATIONAL COOPERATION AGENCY (JICA)

PACIFIC CONSULTANTS INTERNATIONAL

DESIGNED
KIMURA TORU

CHECKED
KONDO MASAMI

DATE : JUNE 2001 DWG. No. PE - WWTP - 204 -04