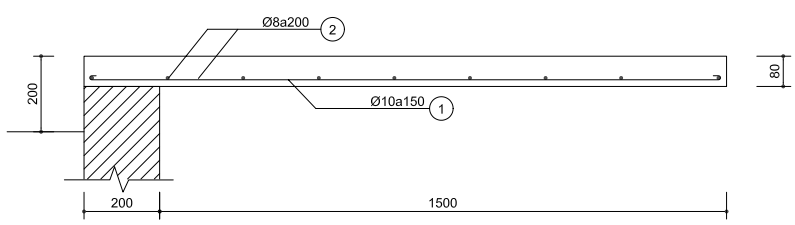
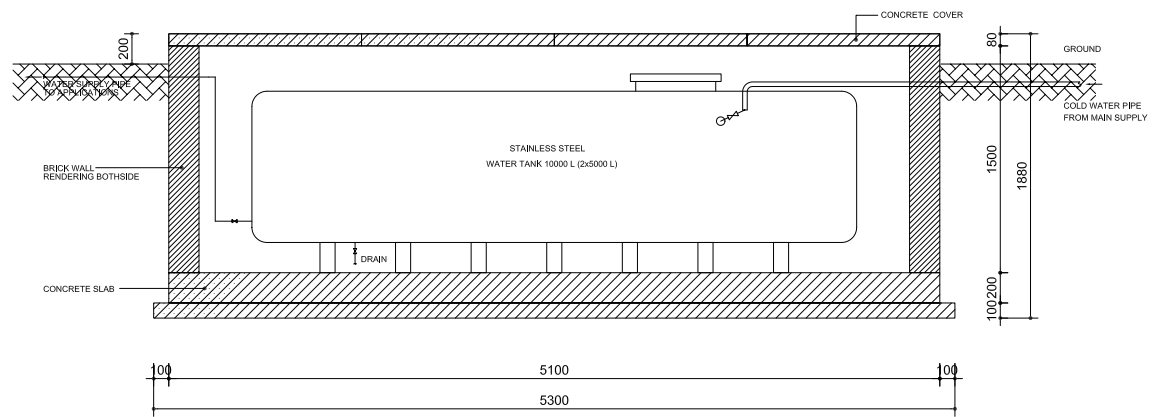


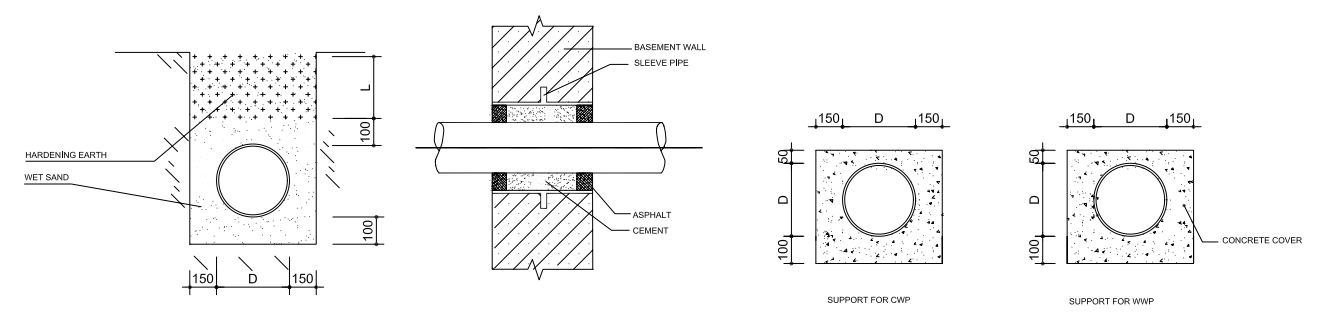
**SECTION A-A - BOTTOM SLAB**  
SCALE: 1/10



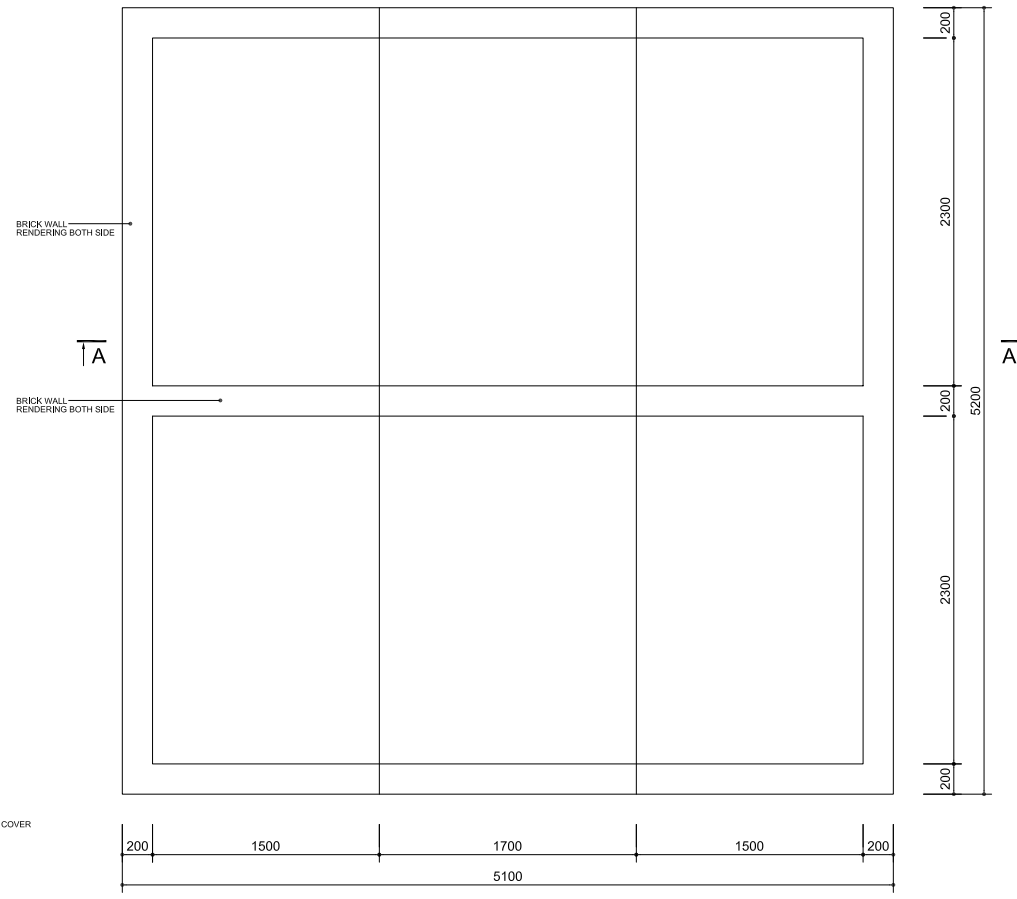
**CROSS SECTION - CONC. COVER**  
SCALE: 1/10



**SECTION A-A**  
SCALE: 1/25



**UNDER-GROUND PIPING    PIPE PENETRATE WALL AT BASEMENT    SUPPORT FOR UNDERGROUND PIPE**



**PLAN OF UNDER GROUND WATER TANK PIT 10000L**  
SCALE: 1/25

NO.	DATE	DESCRIPTIONS	BY	APRO.

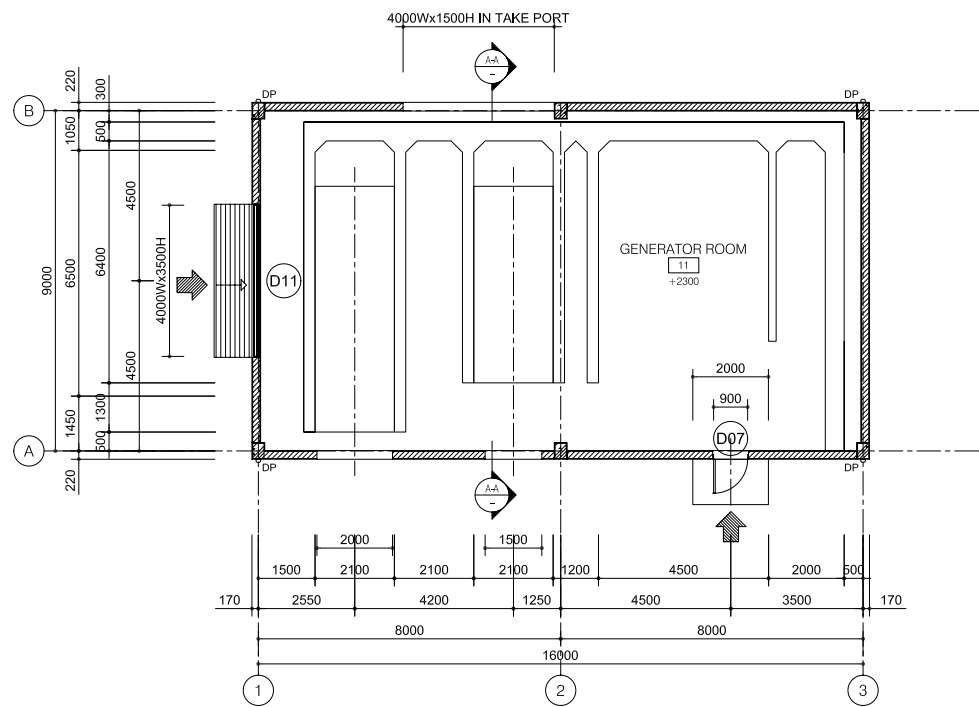
REVISIONS

PROJECT MANAGEMENT UNIT FOR  
HO CHI MINH CITY  
WATER ENVIRONMENT IMPROVEMENT

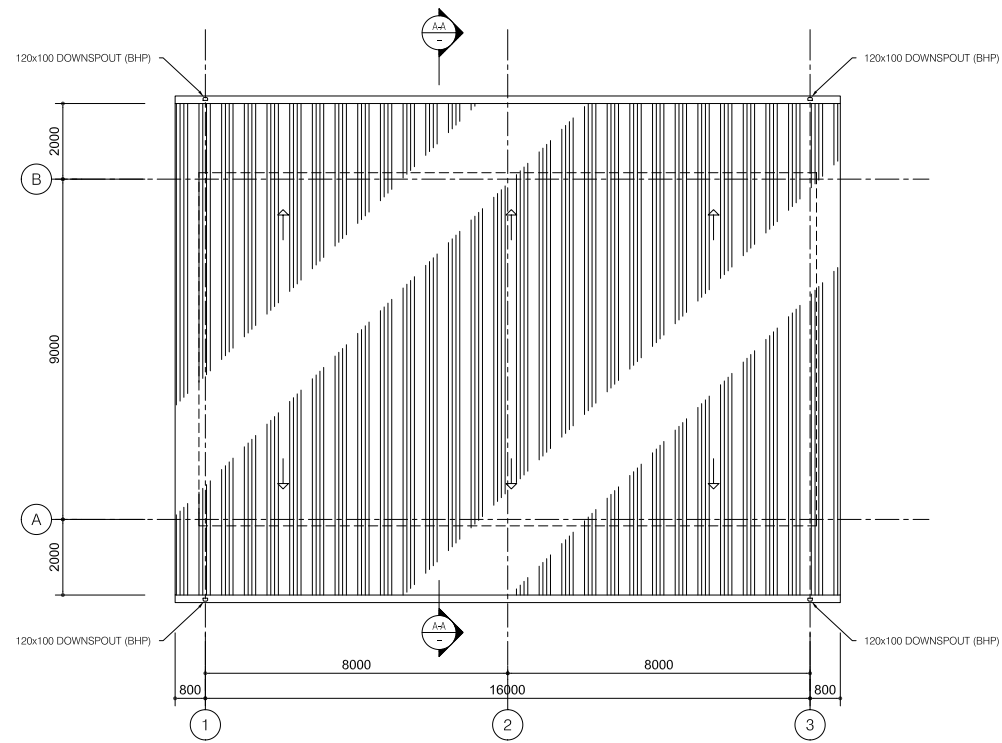
THE DETAILED DESIGN STUDY ON HO CHI MINH CITY  
WATER ENVIRONMENT IMPROVEMENT PROJECT  
IN THE SOCIALIST REPUBLIC OF VIET NAM

PACKAGE C  
INTERMEDIATE WASTEWATER PUMPING STATION  
UNDERGROUND WATER TANK AND  
PIPING DETAILS

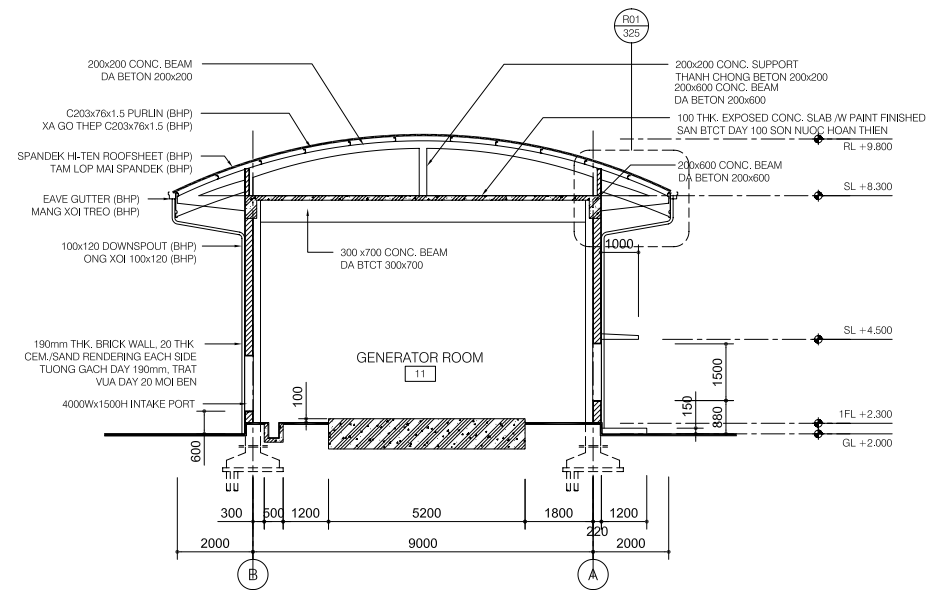
SCALE : 1/10 , 1/25	
JAPAN INTERNATIONAL COOPERATION AGENCY ( JICA )	
PACIFIC CONSULTANTS INTERNATIONAL	
DESIGNED KIMURA TORU	CHECKED KONDO MASAMI
DATE : JUNE 2001	DWG. No. PC-IWPS-329



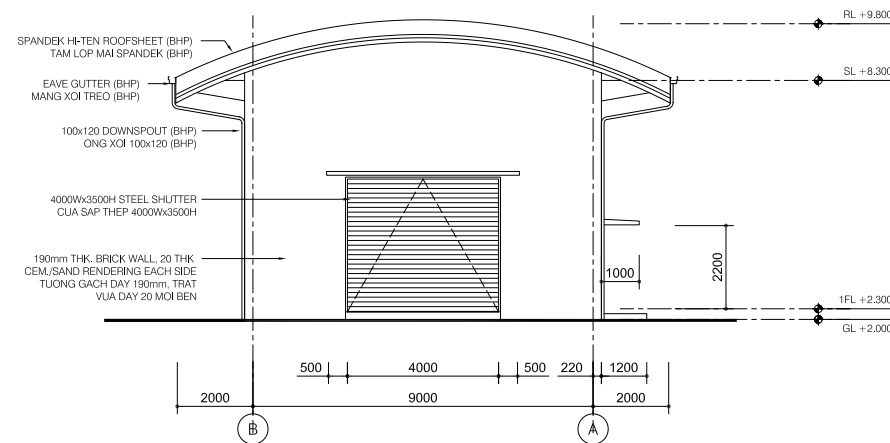
**FIRST FLOOR PLAN**



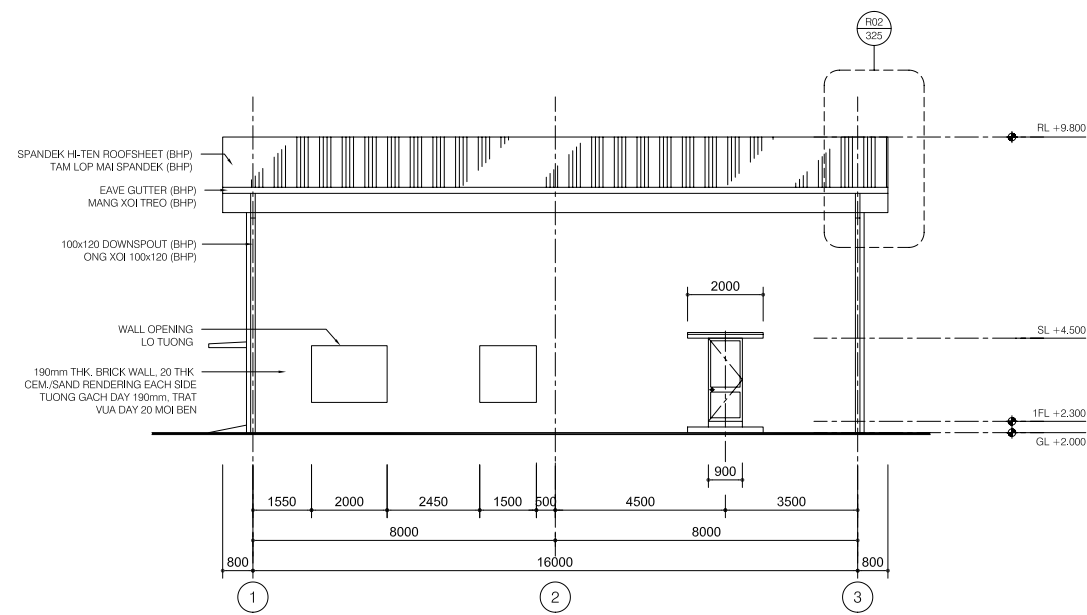
**ROOF PLAN**



**CROSS SECTION A-A**



**ELEVATION LINE 1**

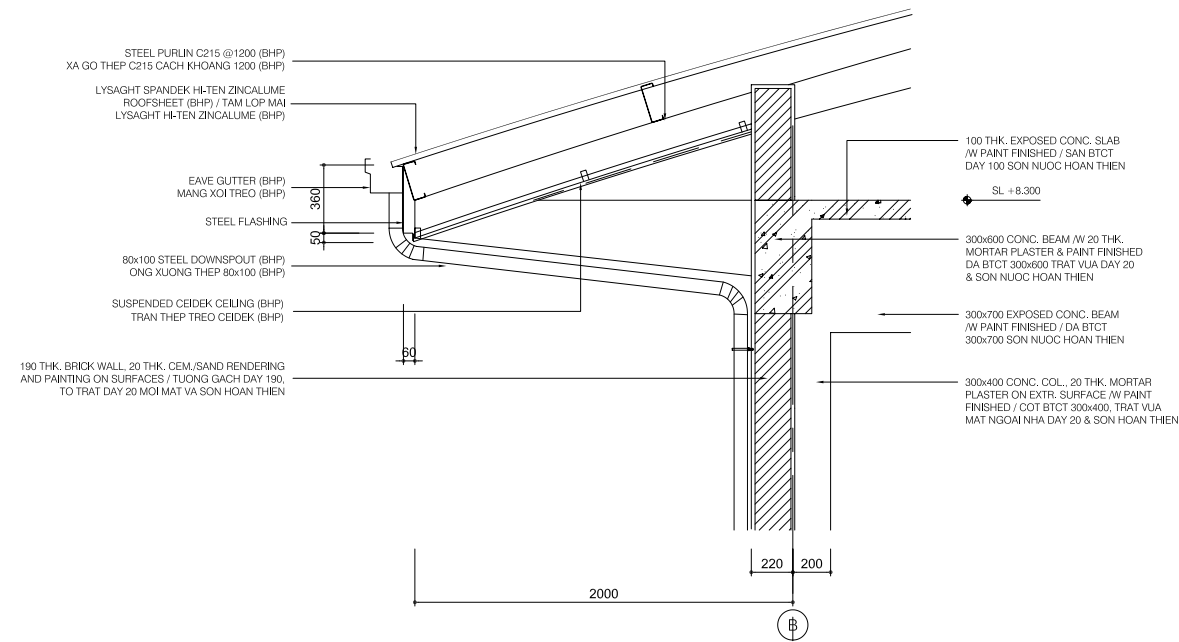


**ELEVATION LINE A**

**LEGEND**

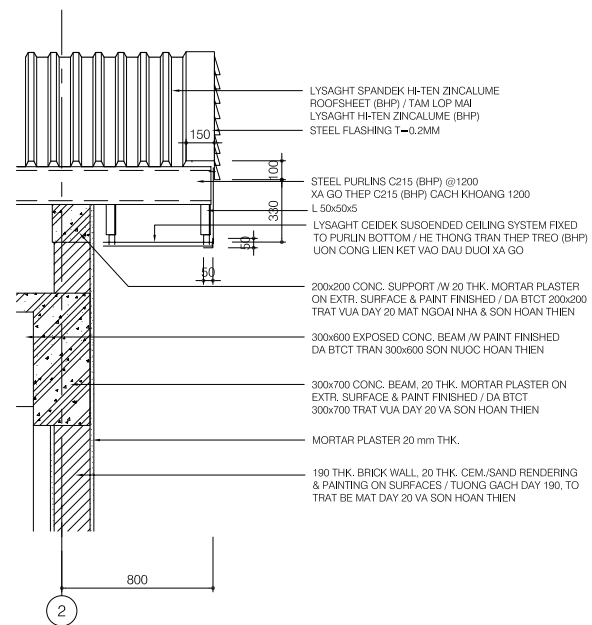
- 190mm THK. BRICK WALL, 20THK CEM./SAND RENDERING ON SURFACE / TUONG GACH DAY 190mm, TRAT VUA DAY 20 MOI MAT
- 90mm THK. BRICK WALL, 20THK CEM./SAND RENDERING ON SURFACE / TUONG GACH DAY 90mm, TRAT VUA DAY 20 MOI MAT

NO.	DATE	DESCRIPTIONS	BY	APRO.
REVISIONS				
PROJECT MANAGEMENT UNIT FOR HO CHI MINH CITY WATER ENVIRONMENT IMPROVEMENT				
THE DETAILED DESIGN STUDY ON HO CHI MINH CITY WATER ENVIRONMENT IMPROVEMENT PROJECT IN THE SOCIALIST REPUBLIC OF VIET NAM				
PACKAGE C INTERMEDIATE WASTEWATER PUMPING STATION <b>GENERATOR BUILDING PLANS, SECTION &amp; ELEVATIONS</b>				
SCALE : 1/100				
JAPAN INTERNATIONAL COOPERATION AGENCY ( JICA )				
PACIFIC CONSULTANTS INTERNATIONAL				
DESIGNED KIMURA TORU		CHECKED KONDO MASAMI		
DATE : JUNE 2001		DWG. No. PC-IWPS-330		



**SECTION DETAIL R01**

SCALE: 1/20



**SECTION DETAIL R02**

SCALE: 1/20


NO.	DATE	DESCRIPTIONS	BY	APRO.
-----	------	--------------	----	-------

REVISIONS				
PROJECT MANAGEMENT UNIT FOR HO CHI MINH CITY WATER ENVIRONMENT IMPROVEMENT				

THE DETAILED DESIGN STUDY ON HO CHI MINH CITY  
WATER ENVIRONMENT IMPROVEMENT PROJECT  
IN THE SOCIALIST REPUBLIC OF VIET NAM

PACKAGE C  
INTERMEDIATE WASTEWATER PUMPING STATION  
**GENERATOR BUILDING  
DETAILS OF WALL AND ROOF**

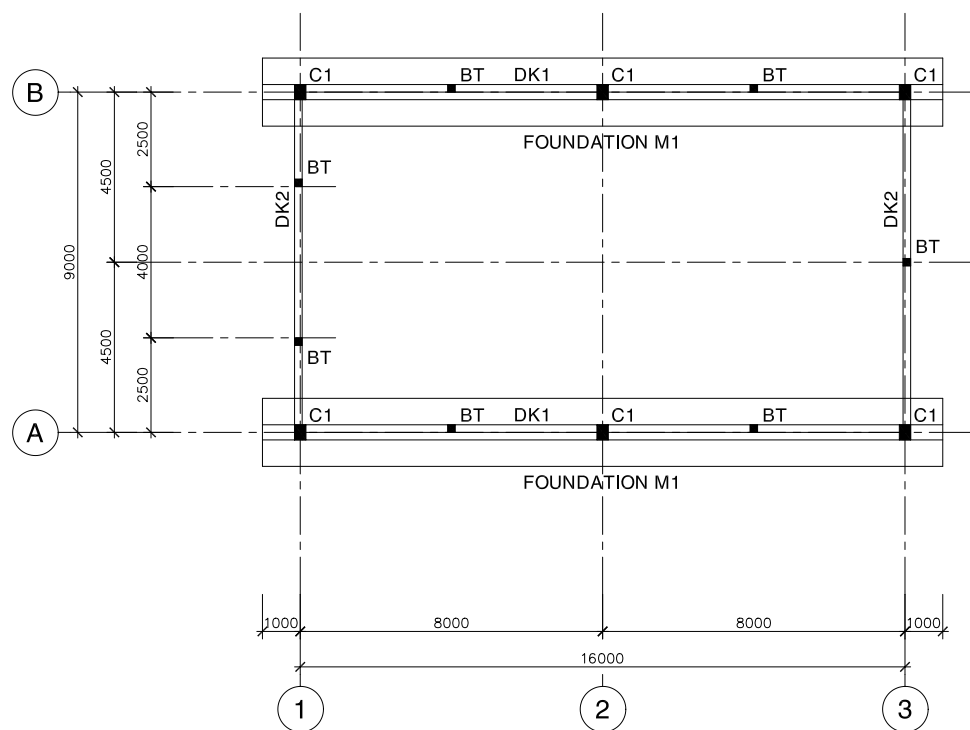
SCALE : AS SHOWN

JAPAN INTERNATIONAL COOPERATION  
AGENCY ( JICA )

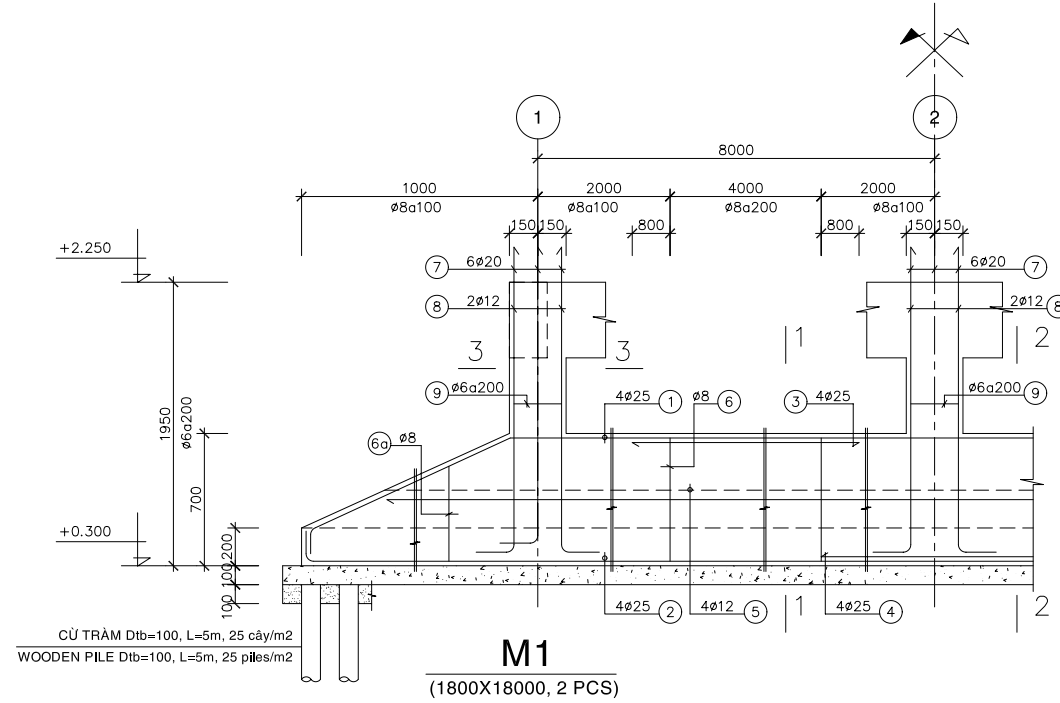
PACIFIC CONSULTANTS INTERNATIONAL

DESIGNED KIMURA TORU	CHECKED KONDO MASAMI
-------------------------	-------------------------

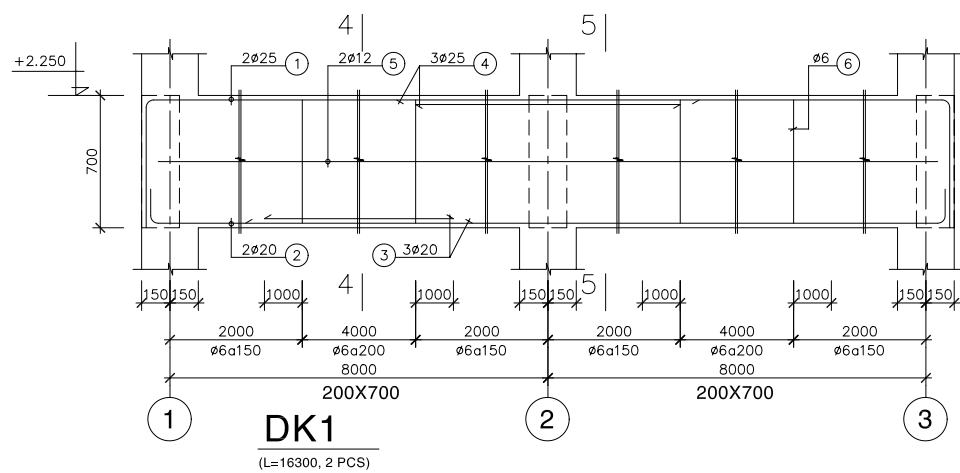
DATE : JUNE 2001      DWG. No. PC-IWPS-331



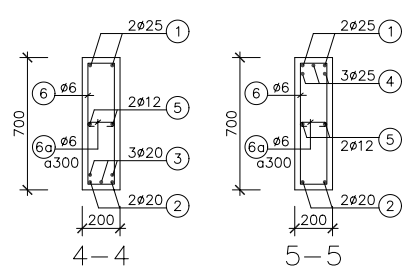
**MẶT BẰNG MÓNG, CỘT & ĐÀ KIỀNG**  
**PLAN OF FOUNDATION, COLUMN & G-BEAM**



**M1**  
 (1800X18000, 2 PCS)

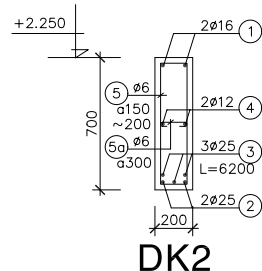


**DK1**  
 (L=16300, 2 PCS)



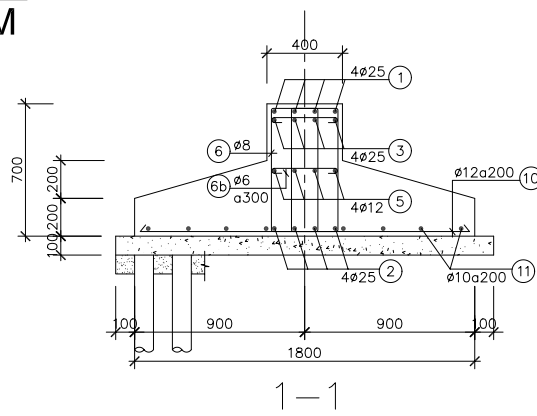
4-4

5-5

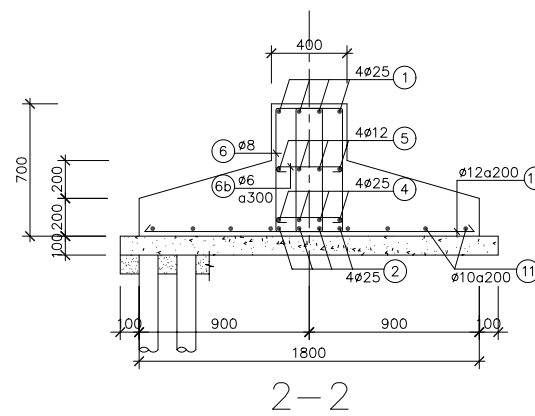


**DK2**

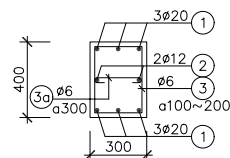
(L=9400, 2 PCS)



1-1

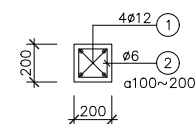


2-2



**COLUMN C1**

(FROM +2.300~+8.300, 6 PCS)



**SUB-COLUMN BT**

(FROM +2.300~+8.300, 7 PCS)

**GHI CHÚ:**  
 - BÊ TÔNG LỚT ĐÁ 40x60, MÁC 100  
 - BÊ TÔNG ĐÁ 10x20, MÁC 300  
 - CỐT THÉP Ra=2000 Kg/cm<sup>2</sup>

**NOTE :**  
 - LEAN CONCRETE STONE 40x60, GRADE 100  
 - CONCRETE STONE 10x20, GRADE 300  
 - REINFORCEMENT Ra=2000 Kg/cm<sup>2</sup>

NO.	DATE	DESCRIPTIONS	BY	APRO.

REVISIONS

PROJECT MANAGEMENT UNIT FOR  
 HO CHI MINH CITY  
 WATER ENVIRONMENT IMPROVEMENT

THE DETAILED DESIGN STUDY ON HO CHI MINH CITY  
 WATER ENVIRONMENT IMPROVEMENT PROJECT  
 IN THE SOCIALIST REPUBLIC OF VIET NAM

PACKAGE C  
 SEWAGE PUMPING STATION

GENERATOR BUILDING  
 PLAN & SECTION OF FOUNDATION,  
 COLUMNS & BEAMS

SCALE : 1/20 , 1/100

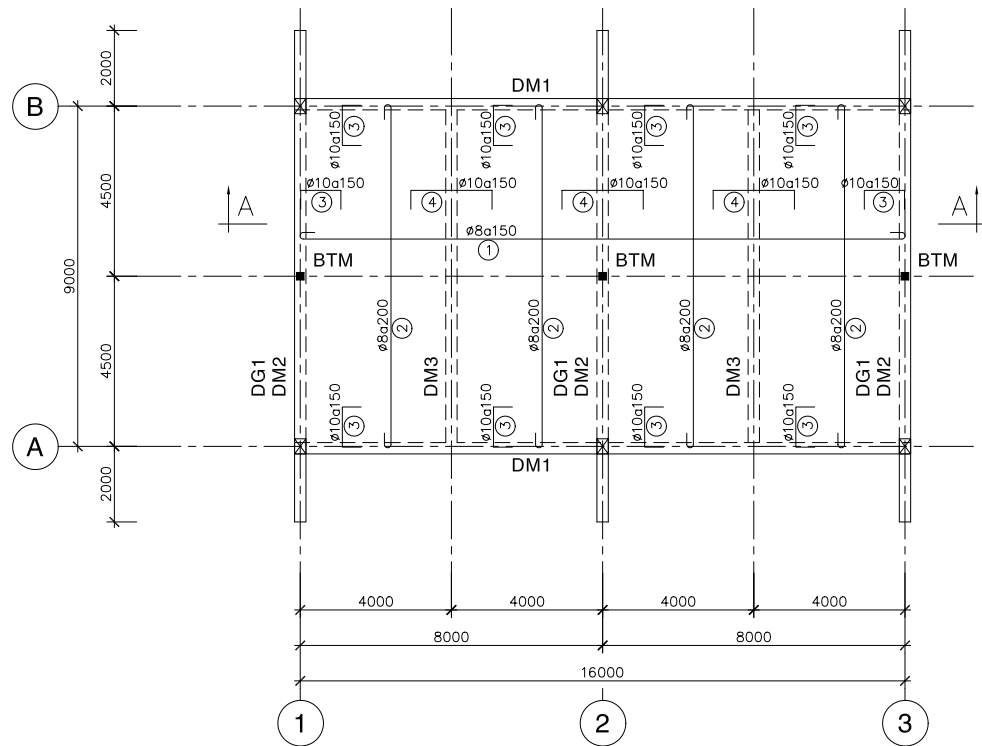
JICA JAPAN INTERNATIONAL COOPERATION  
 AGENCY ( JICA )

PACIFIC CONSULTANTS INTERNATIONAL

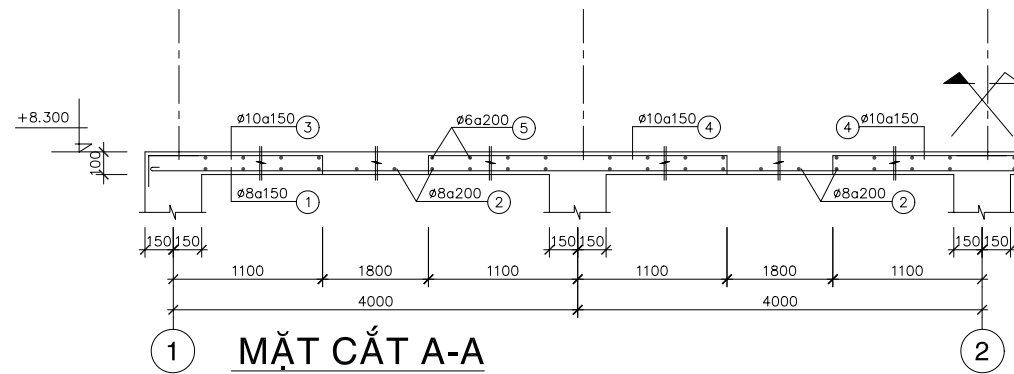
DESIGNED  
 KIMURA TORU

CHECKED  
 KONDO MASAMI

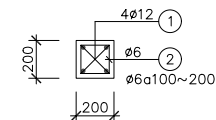
DATE : JUNE 2001 DWG. No. PC-IWPS-332



**MẶT BẰNG DẦM & SÀN MÁI**  
**PLAN OF ROOF SLAB & BEAM**

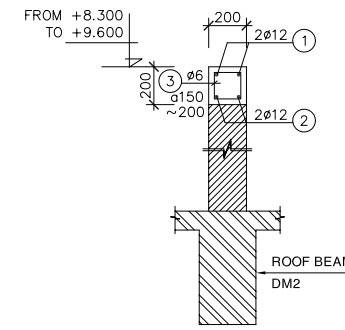


**MẶT CẮT A-A**  
**SECTION A-A**



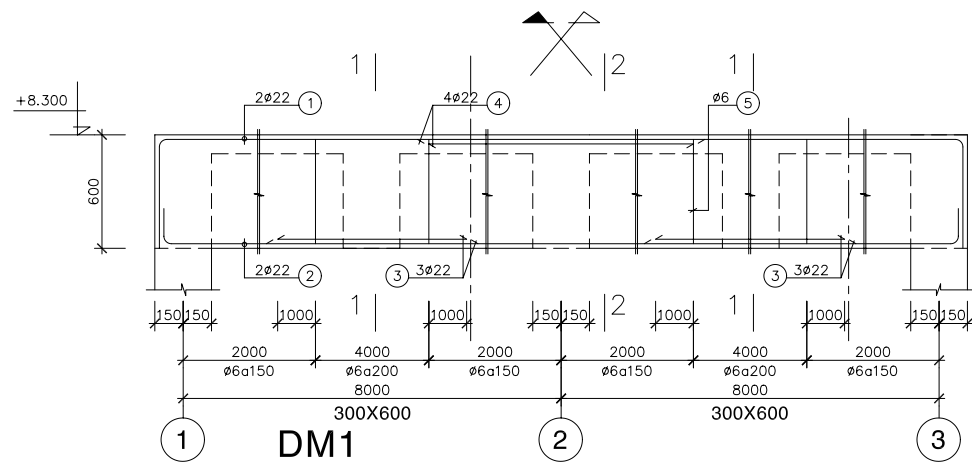
**SUB-COLUMN BTM**

(FROM +8.300~+9.600, 3 PCS)



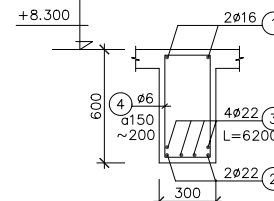
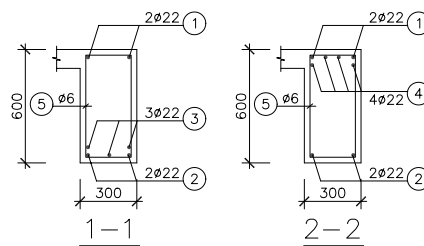
**DG1**

(3 PCS)



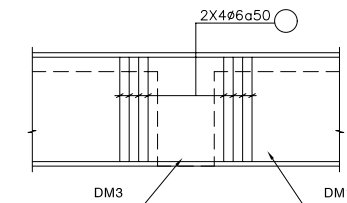
**DM1**

(L=16300, 2 PCS)

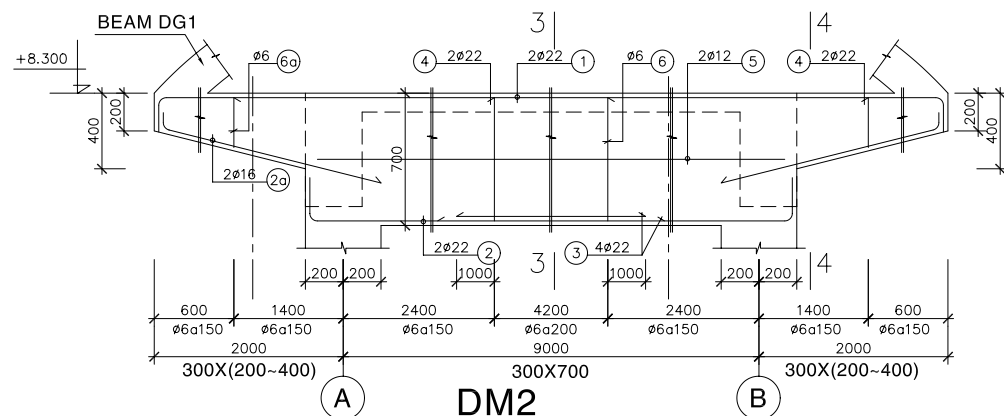


**DM3**

(L=9400, 2 PCS)

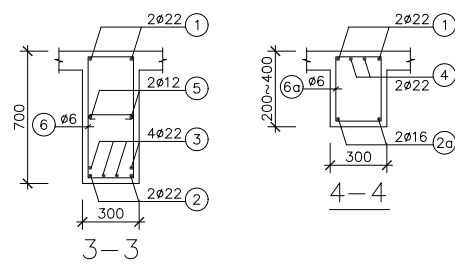


**CT GIA CƯỜNG DẦM TRỰC GIAO**  
**CONNECTION BEAM TO BEAM**



**DM2**

(L=12000, 3 PCS)



**GHI CHÚ:**  
- BÊ TÔNG LỚT ĐÁ 40x60, MÁC 100  
- BÊ TÔNG ĐÁ 10x20, MÁC 300  
- CỐT THÉP Ra=2000 Kg/cm<sup>2</sup>

**NOTE :**  
- LEAN CONCRETE STONE 40x60, GRADE 100  
- CONCRETE STONE 10x20, GRADE 300  
- REINFORCEMENT Ra=2000 Kg/cm<sup>2</sup>

NO.	DATE	DESCRIPTIONS	BY	APRO.

**REVISIONS**

PROJECT MANAGEMENT UNIT FOR  
HO CHI MINH CITY  
WATER ENVIRONMENT IMPROVEMENT

THE DETAILED DESIGN STUDY ON HO CHI MINH CITY  
WATER ENVIRONMENT IMPROVEMENT PROJECT  
IN THE SOCIALIST REPUBLIC OF VIET NAM

PACKAGE C  
INTERMEDIATE WASTEWATER PUMPING STATION

**GENERATOR BUILDING**  
**PLAN & SECTION OF**  
**ROOF SLAB BEAMS AND COLUMNS**

SCALE : N.T.S.

JICA JAPAN INTERNATIONAL COOPERATION  
AGENCY ( JICA )

PACIFIC CONSULTANTS INTERNATIONAL

DESIGNED  
KIMURA TORU

CHECKED  
KONDO MASAMI

DATE : JUNE 2001 DWG. No. PC-IWPS-333