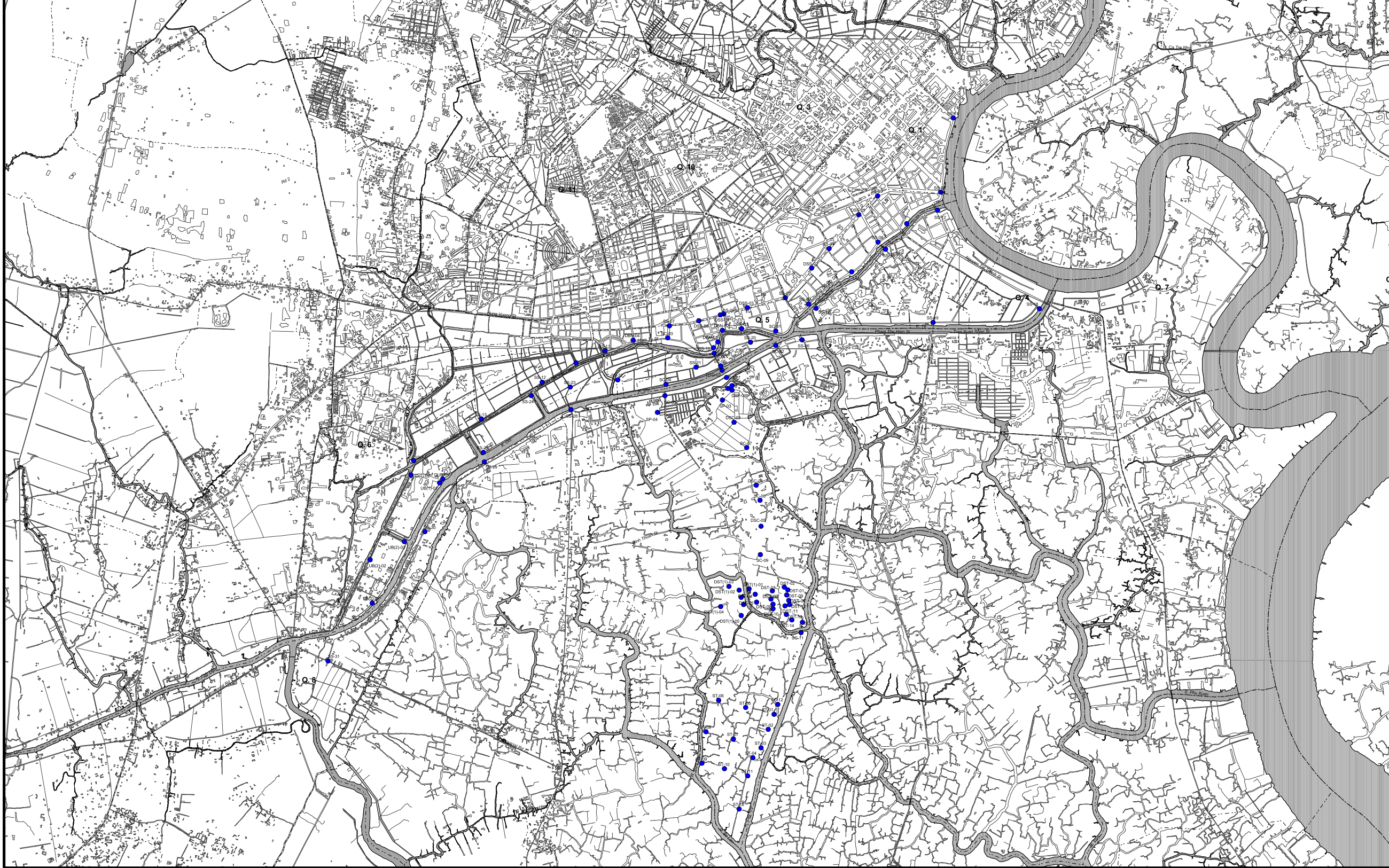


No	Year	Month	Time (min)	Length (m)	Dist	No	Year	Month	Time (min)	Length (m)	Dist	No	Year	Month	Time (min)	Length (m)	Dist
99-04	1999	7	2:20	30		DS11-01	2000	6	2:30	30		99-21	1999	7	2:25	30	
17-01	1978	7	1:10	30		FFA-01	1978	6	1:10	30		10-01	1978	7	1:55	30	
24-01	1979	7	1:15	30		LLA-01	1979	6	1:15	30		20-01	1979	7	1:40	30	
32-01	1979	7	1:20	30		LKA-01	1979	6	1:20	30		21-01	1979	7	1:45	30	
33-01	1979	7	1:25	30		LI-01	1979	6	1:25	30		22-01	1979	7	1:50	30	
34-01	1979	7	1:30	30		LI-02	1979	6	1:30	30		23-01	1979	7	1:55	30	
35-01	1979	7	1:35	30		LI-03	1979	6	1:35	30		24-01	1979	7	2:00	30	
36-01	1979	7	1:40	30		LI-04	1979	6	1:40	30		25-01	1979	7	2:05	30	
37-01	1979	7	1:45	30		LI-05	1979	6	1:45	30		26-01	1979	7	2:10	30	
38-01	1979	7	1:50	30		LI-06	1979	6	1:50	30		27-01	1979	7	2:15	30	
39-01	1979	7	1:55	30		LI-07	1979	6	1:55	30		28-01	1979	7	2:20	30	
40-01	1979	7	2:00	30		LI-08	1979	6	2:00	30		29-01	1979	7	2:25	30	
41-01	1979	7	2:05	30		LI-09	1979	6	2:05	30		30-01	1979	7	2:30	30	
42-01	1979	7	2:10	30		LI-10	1979	6	2:10	30		31-01	1979	7	2:35	30	
43-01	1979	7	2:15	30		LI-11	1979	6	2:15	30							
44-01	1979	7	2:20	30		LI-12	1979	6	2:20	30							
45-01	1979	7	2:25	30		LI-13	1979	6	2:25	30							
46-01	1979	7	2:30	30		LI-14	1979	6	2:30	30							
47-01	1979	7	2:35	30		LI-15	1979	6	2:35	30							
48-01	1979	7	2:40	30		LI-16	1979	6	2:40	30							
49-01	1979	7	2:45	30		LI-17	1979	6	2:45	30							
50-01	1979	7	2:50	30		LI-18	1979	6	2:50	30							
51-01	1979	7	2:55	30		LI-19	1979	6	2:55	30							
52-01	1979	7	3:00	30		LI-20	1979	6	3:00	30							
53-01	1979	7	3:05	30		LI-21	1979	6	3:05	30							
54-01	1979	7	3:10	30		LI-22	1979	6	3:10	30							
55-01	1979	7	3:15	30		LI-23	1979	6	3:15	30							
56-01	1979	7	3:20	30		LI-24	1979	6	3:20	30							
57-01	1979	7	3:25	30		LI-25	1979	6	3:25	30							
58-01	1979	7	3:30	30		LI-26	1979	6	3:30	30							
59-01	1979	7	3:35	30		LI-27	1979	6	3:35	30							
60-01	1979	7	3:40	30		LI-28	1979	6	3:40	30							
61-01	1979	7	3:45	30		LI-29	1979	6	3:45	30							
62-01	1979	7	3:50	30		LI-30	1979	6	3:50	30							
63-01	1979	7	3:55	30		LI-31	1979	6	3:55	30							
64-01	1979	7	4:00	30		LI-32	1979	6	4:00	30							
65-01	1979	7	4:05	30		LI-33	1979	6	4:05	30							
66-01	1979	7	4:10	30		LI-34	1979	6	4:10	30							
67-01	1979	7	4:15	30		LI-35	1979	6	4:15	30							
68-01	1979	7	4:20	30		LI-36	1979	6	4:20	30							
69-01	1979	7	4:25	30		LI-37	1979	6	4:25	30							
70-01	1979	7	4:30	30		LI-38	1979	6	4:30	30							
71-01	1979	7	4:35	30		LI-39	1979	6	4:35	30							
72-01	1979	7	4:40	30		LI-40	1979	6	4:40	30							
73-01	1979	7	4:45	30		LI-41	1979	6	4:45	30							
74-01	1979	7	4:50	30		LI-42	1979	6	4:50	30							
75-01	1979	7	4:55	30		LI-43	1979	6	4:55	30							
76-01	1979	7	5:00	30		LI-44	1979	6	5:00	30							
77-01	1979	7	5:05	30		LI-45	1979	6	5:05	30							
78-01	1979	7	5:10	30		LI-46	1979	6	5:10	30							
79-01	1979	7	5:15	30		LI-47	1979	6	5:15	30							
80-01	1979	7	5:20	30		LI-48	1979	6	5:20	30							
81-01	1979	7	5:25	30		LI-49	1979	6	5:25	30							
82-01	1979	7	5:30	30		LI-50	1979	6	5:30	30							
83-01	1979	7	5:35	30		LI-51	1979	6	5:35	30							
84-01	1979	7	5:40	30		LI-52	1979	6	5:40	30							
85-01	1979	7	5:45	30		LI-53	1979	6	5:45	30							
86-01	1979	7	5:50	30		LI-54	1979	6	5:50	30							
87-01	1979	7	5:55	30		LI-55	1979	6	5:55	30							
88-01	1979	7	6:00	30		LI-56	1979	6	6:00	30							
89-01	1979	7	6:05	30		LI-57	1979	6	6:05	30							
90-01	1979	7	6:10	30		LI-58	1979	6	6:10	30							
91-01	1979	7	6:15	30		LI-59	1979	6	6:15	30							
92-01	1979	7	6:20	30		LI-60	1979	6	6:20	30							
93-01	1979	7	6:25	30		LI-61	1979	6	6:25	30							
94-01	1979	7	6:30	30		LI-62	1979	6	6:30	30							
95-01	1979	7	6:35	30		LI-63	1979	6	6:35	30							
96-01	1979	7	6:40	30		LI-64	1979	6	6:40	30							
97-01	1979	7	6:45	30		LI-65	1979	6	6:45	30							
98-01	1979	7	6:50	30		LI-66	1979	6	6:50	30							
99-01	1979	7	6:55	30		LI-67	1979	6	6:55	30							
100-01	1979	7	7:00	30		LI-68	1979	6	7:00	30							



NO.	DATE	DESCRIPTIONS	BY	APPRO.

REVISIONS

PROJECT MANAGEMENT UNIT FOR  
HO CHI MINH CITY  
WATER ENVIRONMENT IMPROVEMENT

THE DETAILED DESIGN ON HO CHI MINH CITY  
WATER ENVIRONMENT IMPROVEMENT PROJECT  
IN THE SOCIALIST REPUBLIC OF VIET NAM

PACKAGE C  
INTERCEPTOR SEWER CONSTRUCTION

**GEOLOGICAL DATA AND INFORMATION**

SCALE : 1 / 30000

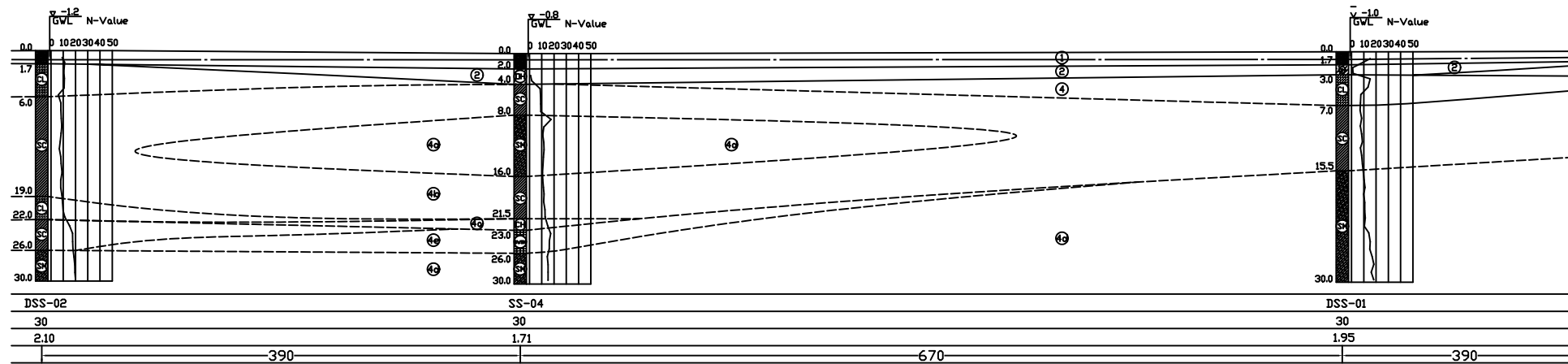
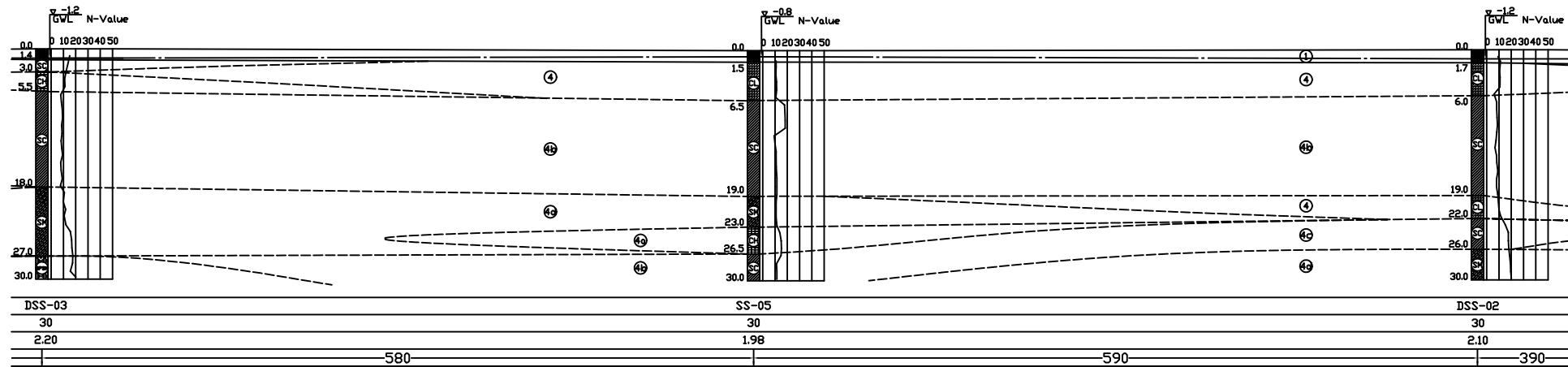
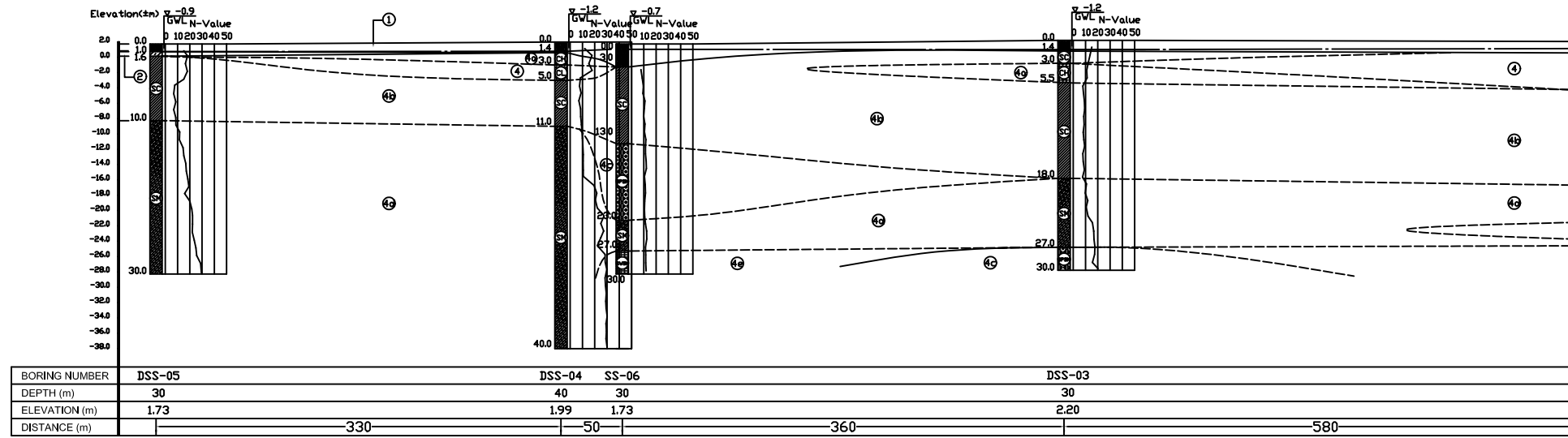
JAPAN INTERNATIONAL COOPERATION AGENCY ( JICA )

PACIFIC CONSULTANTS INTERNATIONAL

DESIGNED SATO NOBUYUKI	CHECKED KONDO MASAMI
---------------------------	-------------------------

DATE : JUNE 2001      DWG. No. PC - ISC.IWPS - 103





Scale: Vertical 1:400  
Horizontal 1:2000

**LEGEND**

- Ground made: Soft, blackish grey SANDY CLAY
- Very loose, blackish grey CLAYEY SAND
- Medium dense, yellowish whitish grey CLAYEY SAND
- Very soft, high plasticity, blackish grey ORGANIC CLAY
- Stiff, low plasticity, yellowish grey CLAY
- Medium dense, yellowish brownish grey SILTY SAND
- Soft, high plasticity, blackish grey ORGANIC CLAY
- Very stiff, high plasticity yellowish grey CLAY
- Medium dense whitish grey POORLY GRADED SAND
- Hard, high plasticity yellowish grey SANDY CLAY

NO.	DATE	DESCRIPTIONS	BY	APPRO.

REVISIONS

PROJECT MANAGEMENT UNIT FOR  
HO CHI MINH CITY  
WATER ENVIRONMENT IMPROVEMENT

THE DETAILED DESIGN ON HO CHI MINH CITY  
WATER ENVIRONMENT IMPROVEMENT PROJECT  
IN THE SOCIALIST REPUBLIC OF VIET NAM

PACKAGE C  
INTERCEPTOR SEWER CONSTRUCTION  
GEOLOGICAL PROFILE FOR  
INTERCEPTOR SEWER AND  
INTERMEDIATE WASTEWATER  
PUMPING STATION (1)

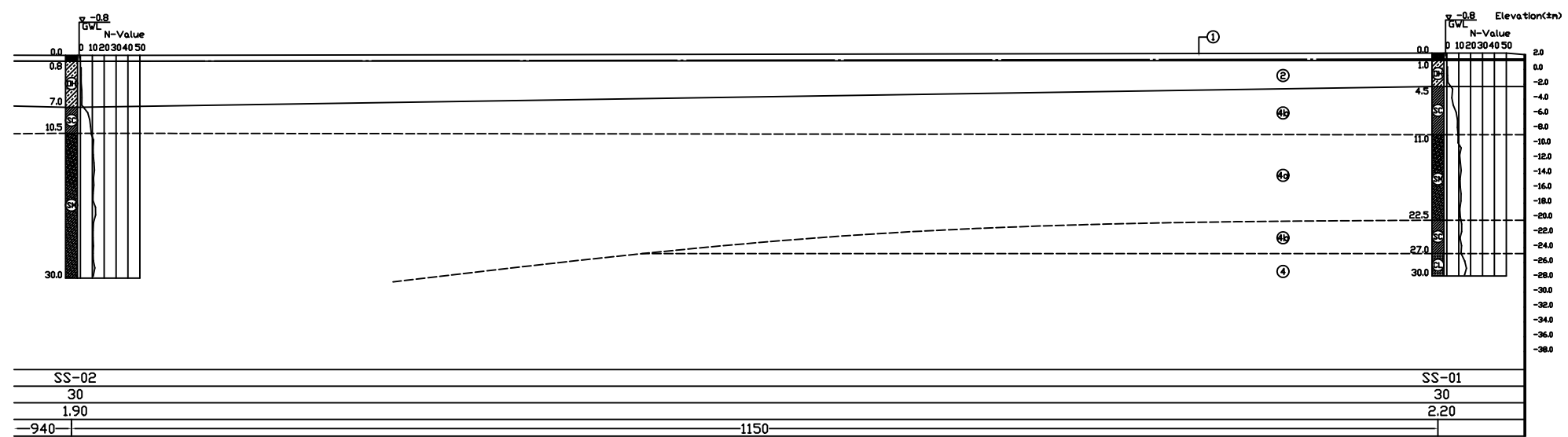
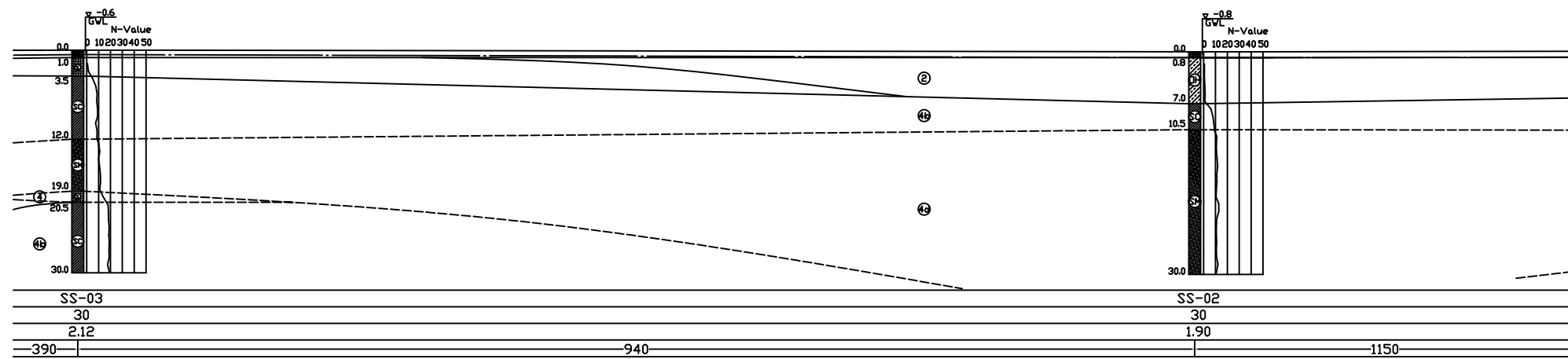
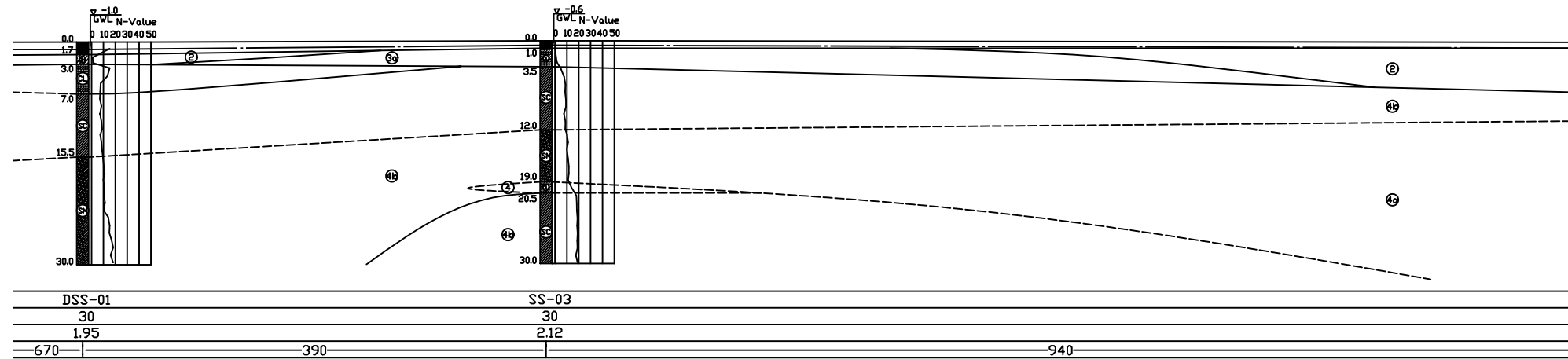
SCALE : AS SHOWN

JAPAN INTERNATIONAL COOPERATION  
AGENCY ( JICA )

PACIFIC CONSULTANTS INTERNATIONAL

DESIGNED SATO NOBUYUKI	CHECKED KONDO MASAMI
---------------------------	-------------------------

DATE : JUNE 2001      DWG. No. PC - ISC,IWPS - 104



Scale: Vertical 1:400  
Horizontal 1:2000

**LEGEND**

- Ground made: Soft, blackish grey SANDY CLAY
- Very loose, blackish grey CLAYEY SAND
- Medium dense, yellowish whitish grey CLAYEY SAND
- Very soft, high plasticity, blackish grey ORGANIC CLAY
- Stiff, low plasticity, yellowish grey CLAY
- Medium dense, yellowish brownish grey SILTY SAND
- Soft, high plasticity, blackish grey ORGANIC CLAY
- Very stiff, high plasticity yellowish grey CLAY
- Medium dense whitish grey POORLY GRADED SAND
- Hard, high plasticity yellowish grey SANDY CLAY

NO.	DATE	DESCRIPTIONS	BY	APRO.

REVISIONS

PROJECT MANAGEMENT UNIT FOR  
HO CHI MINH CITY  
WATER ENVIRONMENT IMPROVEMENT

THE DETAILED DESIGN ON HO CHI MINH CITY  
WATER ENVIRONMENT IMPROVEMENT PROJECT  
IN THE SOCIALIST REPUBLIC OF VIET NAM

PACKAGE C  
INTERCEPTOR SEWER CONSTRUCTION  
GEOLOGICAL PROFILE FOR  
INTERCEPTOR SEWER AND  
INTERMEDIATE WASTEWATER  
PUMPING STATION (2)

SCALE : AS SHOWN

JAPAN INTERNATIONAL COOPERATION  
AGENCY ( JICA )

PACIFIC CONSULTANTS INTERNATIONAL

DESIGNED SATO NOBUYUKI	CHECKED KONDO MASAMI
---------------------------	-------------------------

DATE : JUNE 2001      DWG. No. PC - ISC,IWPS - 105