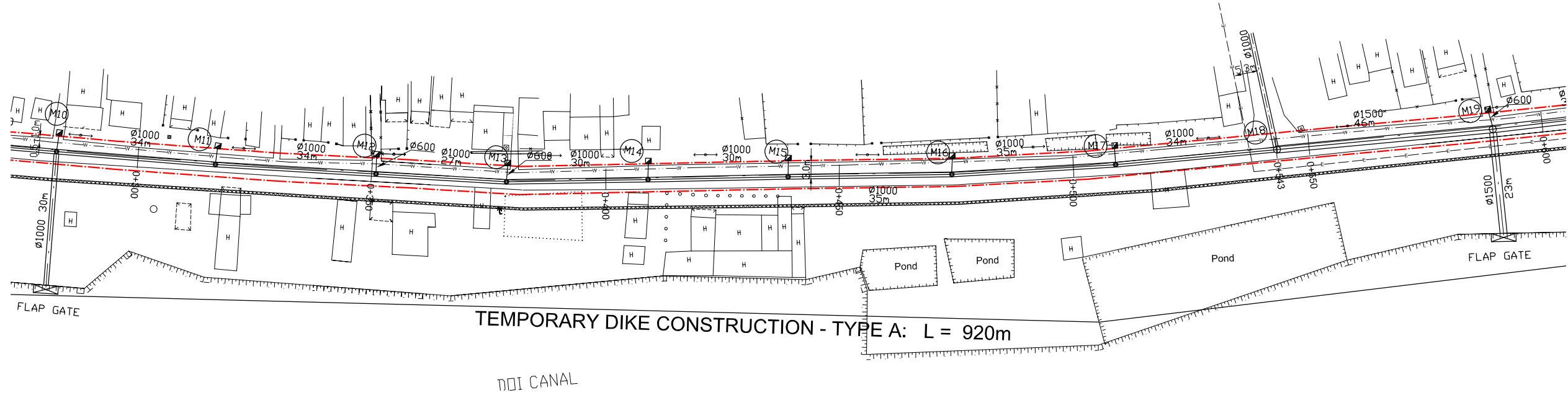


KEY MAP



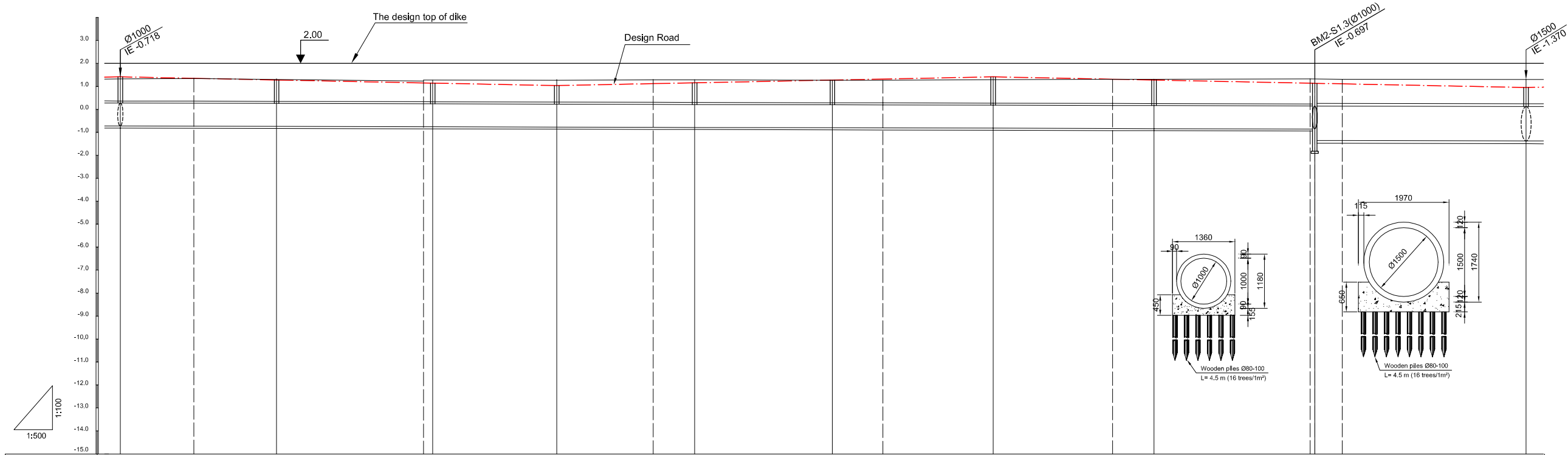
LEGEND

- Sewer Line
- Planned Sewer
- Existing Sewer
- Telephone Cable
- Electric Cable
- Water Pipe
- Outlet Without Flap Gate
- Outlet With Flap Gate
- Temporary dike
- Design Road
- No. 1 Manhole
- No. 2 Manhole
- No. 3 Manhole
- No. 4 Manhole
- Special Manhole
- Inlet
- Existing Manhole
- Existing Inlet
- Telephone Cable Inspection Chamber
- Electric Cable Inspection Chamber
- Fire Hydrant



TEMPORARY DIKE CONSTRUCTION - TYPE A: L = 920m

DDI CANAL



Location of Survey	0+300	0+350	0+400	0+450	0+500	0+550												
Manhole Number	M10	M11	M12	M13	M14	M15	M16	M17	M18	M19								
Diameter (mm)	Ø1000	Ø1000	Ø1000	Ø1000	Ø1000	Ø1000	Ø1000	Ø1000	Ø1000	Ø1500								
Gradient (%)	0.5‰	0.5‰	0.5‰	0.5‰	0.5‰	0.5‰	0.5‰	0.5‰	0.5‰	0.5‰								
Length (m)	34.00	34.00	27.00	30.00	30.00	35.00	35.00	35.00	35.00	46.00								
Gradient of Road (%)	95.00		4.0‰			95.00		116.00		4.0‰								
Road design Elevation (m)	1.421	1.357	1.285	1.157	1.149	1.041	1.125	1.161	1.281	1.325	1.421	1.317	1.281	1.145	1.141	1.117	0.957	
Existing Ground Elevation (m)	1.33	1.35	1.31	1.24	1.157	1.149	1.27	1.29	1.29	1.27	1.281	1.27	1.30	1.32	1.32	1.33	1.33	1.31
Earth Covering (m)	1.067	1.002	0.946	0.819	0.825	0.727	0.816	0.867	0.992	1.048	1.157	1.058	1.039	0.903	0.901	0.867	0.712	
Invert Elevation (m)	-0.718	-0.726	-0.735	-0.751	-0.752	-0.766	-0.776	-0.781	-0.796	-0.801	-0.813	-0.826	-0.831	-0.848	-0.848	-1.351	-1.370	
Total Accumulation Length (m)	284.0	300.0	318.0	350.0	352.0	379.0	400.0	409.0	439.0	450.0	474.0	500.0	509.0	543.0	544.0	550.0	590.0	

NO.	DATE	DESCRIPTIONS	BY	APRO.

REVISIONS

PROJECT MANAGEMENT UNIT FOR
HO CHI MINH CITY
WATER ENVIRONMENT IMPROVEMENT

THE DETAILED DESIGN STUDY ON HO CHI MINH CITY
WATER ENVIRONMENT IMPROVEMENT PROJECT
IN THE SOCIALIST REPUBLIC OF VIET NAM

PACKAGE B
PUMP DRAINAGE IMPROVEMENT
BEN ME COC (2) AREA
**PLAN AND PROFILE OF SEWER,
ROAD AND TEMPORARY DIKE (9)**
BM2 - S1 (M10-M19)

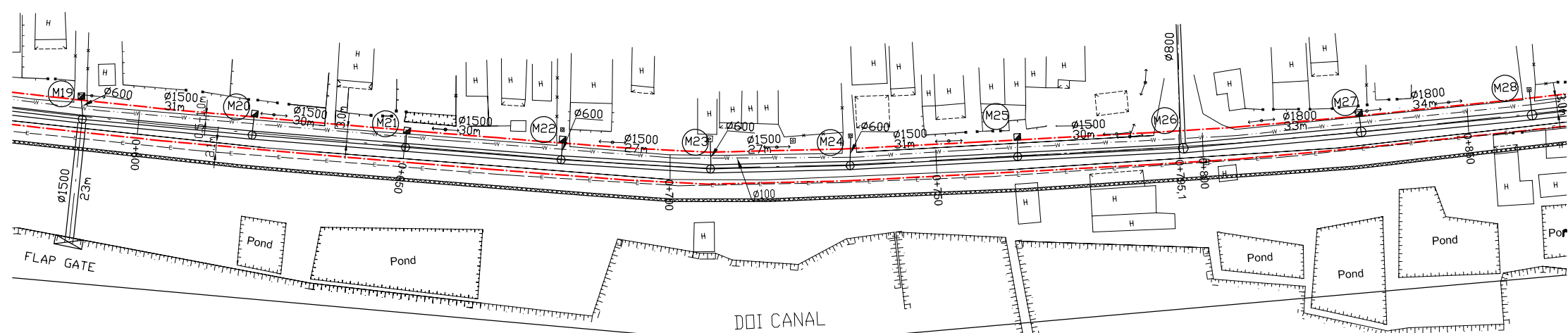
SCALE : AS SHOWN

JICA JAPAN INTERNATIONAL COOPERATION
AGENCY (JICA)

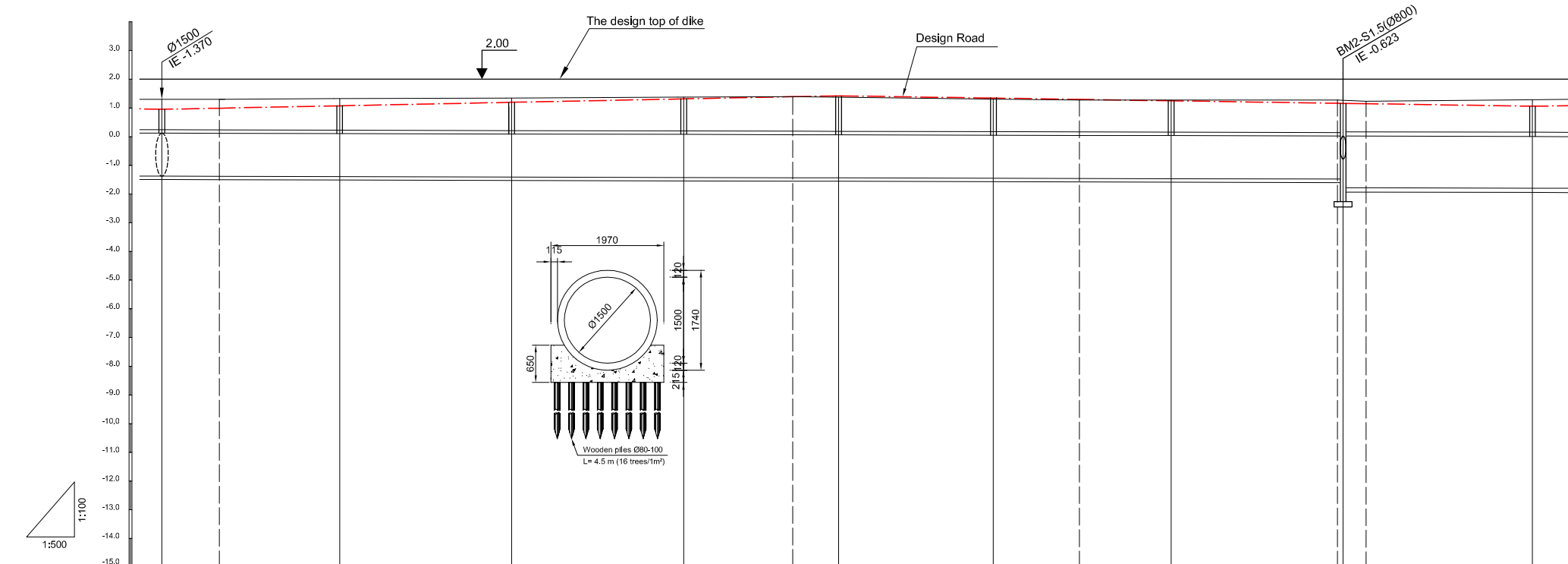
PACIFIC CONSULTANTS INTERNATIONAL

DESIGNED CHECKED

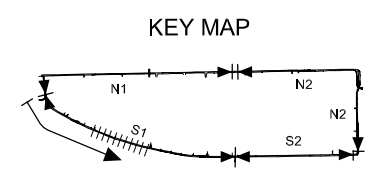
DATE : DWG. No. PB - PDI - BMC2- 209



TEMPORARY DIKE CONSTRUCTION - TYPE A: L = 920m



Location of Survey	0+600		0+700		0+750		0+800							
Manhole Number	M19	M20	M21	M22	M23	M24	M25	M26	M27					
Diameter (mm)	Ø1500	Ø1500	Ø1500	Ø1500	Ø1500	Ø1500	Ø1500	Ø1500	Ø1800					
Gradient (%)	0.5‰	0.5‰	0.5‰	0.5‰	0.5‰	0.5‰	0.5‰	0.5‰	0.5‰					
Length (m)	31.00	30.00	30.00	27.00	27.00	31.00	30.00	33.00						
Gradient of Road (%)	4.0‰				118.00		121.00		3.0‰					
Road design Elevation (m)	0.957	0.997	1.081	1.201	1.321	1.397	1.429	1.348	1.303	1.255	1.168	1.165	1.153	1.066
Existing Ground Elevation (m)	1.31	1.31	1.33	1.35	1.38	1.40	1.38	1.32	1.28	1.28	1.28	1.24	1.24	1.29
Earth Covering (m)	0.712	0.763	1.082	0.997	1.126	1.206	1.252	1.178	1.141	1.108	1.021	1.020	0.992	0.916
Invert Elevation (m)	-1.370	-1.376	-1.386	-1.401	-1.416	-1.426	-1.429	-1.443	-1.451	-1.458	-1.473	-1.773	-1.775	-1.789
Total Accumulation Length (m)	590.0	600.0	621.0	650.0	681.0	700.0	708.0	735.0	750.0	766.0	796.0	800.0	829.0	



LEGEND

- Sewer Line
- Planned Sewer
- Existing Sewer
- Telephone Cable
- Electric Cable
- Water Pipe
- Outlet Without Flap Gate
- Outlet With Flap Gate
- Temporary dike
- Design Road
- No. 1 Manhole
- No. 2 Manhole
- No. 3 Manhole
- No. 4 Manhole
- Special Manhole
- Inlet
- Existing Manhole
- Existing Inlet
- Telephone Cable Inspection Chamber
- Electric Cable Inspection Chamber
- Fire Hydrant

NO.	DATE	DESCRIPTIONS	BY	APRO.

REVISIONS

PROJECT MANAGEMENT UNIT FOR
HO CHI MINH CITY
WATER ENVIRONMENT IMPROVEMENT

THE DETAILED DESIGN STUDY ON HO CHI MINH CITY
WATER ENVIRONMENT IMPROVEMENT PROJECT
IN THE SOCIALIST REPUBLIC OF VIET NAM

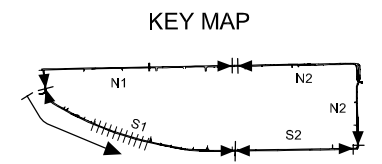
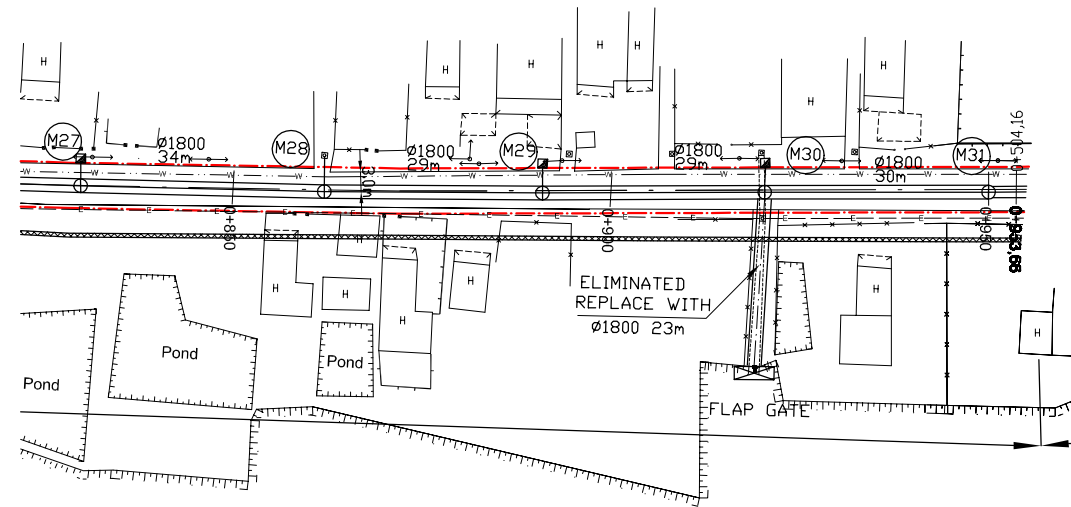
PACKAGE B
PUMP DRAINAGE IMPROVEMENT
BEN ME COC (2) AREA
**PLAN AND PROFILE OF SEWER,
ROAD AND TEMPORARY DIKE (10)**
BM2 - S1 (M19-M27)

SCALE : AS SHOWN

JAPAN INTERNATIONAL COOPERATION AGENCY (JICA)

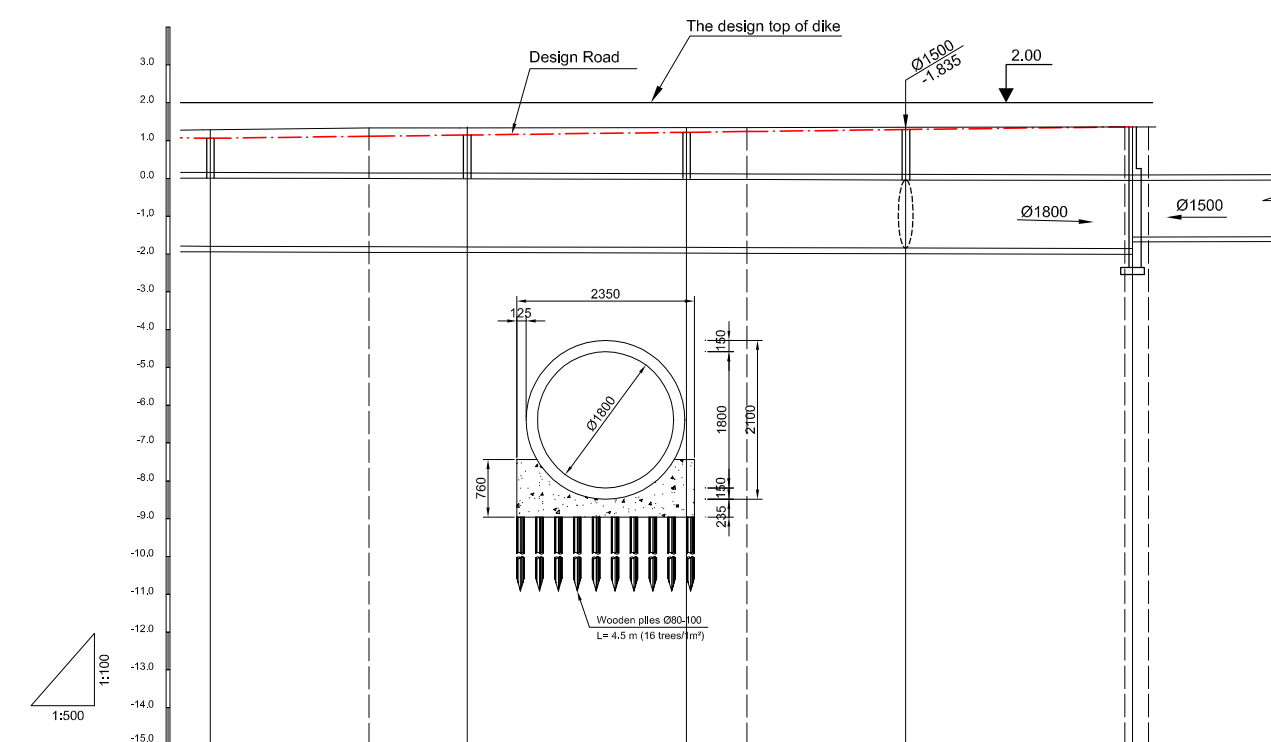
PACIFIC CONSULTANTS INTERNATIONAL

DESIGNED	CHECKED
DATE :	DWG. No. PB - PDI - BMC2- 210



LEGEND

- Sewer Line
- Sewer Line
- Planted Sewer
- Existing Sewer
- Telephone Cable
- Electric Cable
- Water Pipe
- Outlet Without Flap Gate
- Outlet With Flap Gate
- Temporary dike
- Design Road
- No. 1 Manhole
- No. 2 Manhole
- No. 3 Manhole
- No. 4 Manhole
- Special Manhole
- Inlet
- Existing Manhole
- Existing Inlet
- Telephone Cable Inspection Chamber
- Electric Cable Inspection Chamber
- Fire Hydrant



Location of Survey	0+850		0+900				
Manhole Number	M27	M28	M29	M30	M31		
Diameter (mm)	Ø1800	Ø1800	Ø1800	Ø1800	Ø1800		
Gradient (‰)	0.5‰	0.5‰	0.5‰	0.5‰	0.5‰		
Length (m)	34.00	29.00	29.00	30.00			
Gradient of Road (‰)	2.5‰		122.00				
Road design Elevation (m)	1.066	1.119	1.152	1.224	1.244	1.297	1.369
Existing Ground Elevation (m)	1.29	1.34	1.34	1.35	1.35	1.36	1.37
Earth Covering (m)	0.916	0.975	0.923	1.099	1.129	1.197	1.270
Invert Elevation (m)	-1.789	-1.800	-1.806	-1.821	-1.825	-1.835	-1.850
Total Accumulation Length (m)	829.0	850.0	863.0	892.0	900.0	921.0	950.0
							951.0
							953.1

NO.	DATE	DESCRIPTIONS	BY	APRO.
-----	------	--------------	----	-------

REVISIONS

PROJECT MANAGEMENT UNIT FOR
HO CHI MINH CITY
WATER ENVIRONMENT IMPROVEMENT

THE DETAILED DESIGN STUDY ON HO CHI MINH CITY
WATER ENVIRONMENT IMPROVEMENT PROJECT
IN THE SOCIALIST REPUBLIC OF VIET NAM

PACKAGE B
PUMP DRAINAGE IMPROVEMENT
BEN ME COC (2) AREA

**PLAN AND PROFILE OF SEWER,
ROAD AND TEMPORARY DIKE (11)**

BM2 - S1 (M27-M31)

SCALE : AS SHOWN

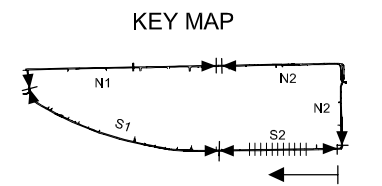
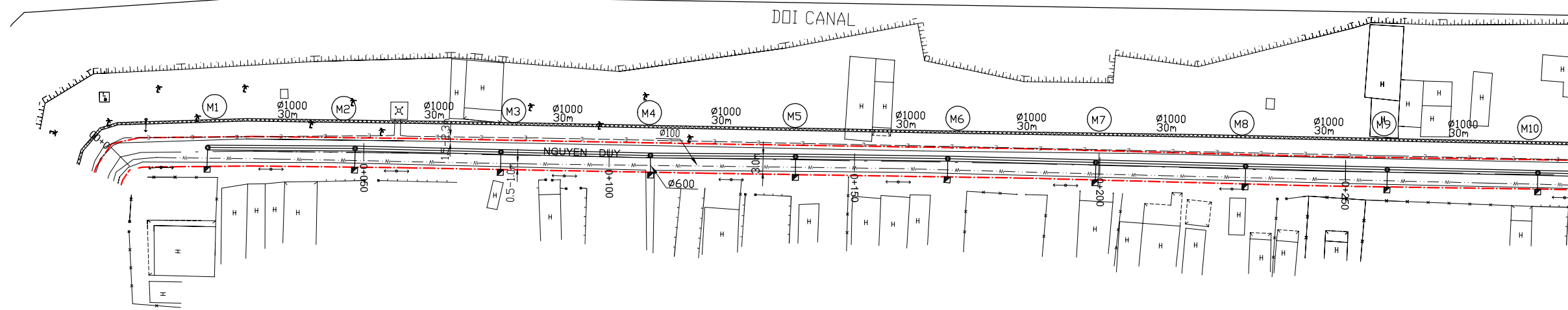
JAPAN INTERNATIONAL COOPERATION AGENCY (JICA)

PACIFIC CONSULTANTS INTERNATIONAL

DESIGNED _____ CHECKED _____

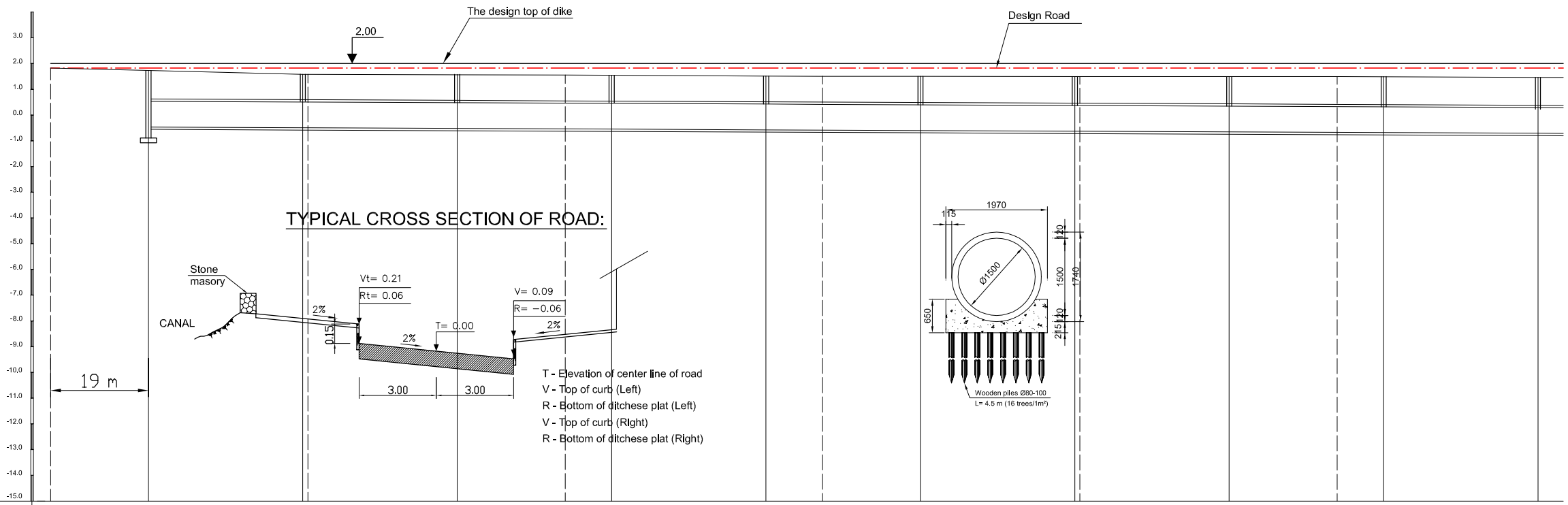
DATE : _____ DWG. No. PB - PDI - BMC2- 211

TEMPORARY DIKE CONSTRUCTION - TYPE A: L= 510m



LEGEND

- Sewer Line
- Planted Sewer
- Existing Sewer
- Telephone Cable
- Electric Cable
- Water Pipe
- Outlet Without Flap Gate
- Outlet With Flap Gate
- Temporary dike
- Design Road
- No. 1 Manhole
- No. 2 Manhole
- No. 3 Manhole
- No. 4 Manhole
- Special Manhole
- Inlet
- Existing Manhole
- Existing Inlet
- Telephone Cable Inspection Chamber
- Electric Cable Inspection Chamber
- Fire Hydrant



Location of Survey	0+00	0+50	0+100	0+150	0+200	0+250										
Manhole Number	M1	M2	M3	M4	M5	M6	M7	M8	M9	M10						
Diameter (mm)	Ø1000	Ø1000	Ø1000	Ø1000	Ø1000	Ø1000	Ø1000	Ø1000	Ø1000	Ø1000						
Gradient (‰)	0.9‰	0.9‰	0.9‰	0.9‰	0.9‰	0.9‰	0.9‰	0.9‰	0.9‰	0.9‰						
Length (m)	30.00	30.00	30.00	30.00	30.00	30.00	30.00	30.00	30.00	30.00						
Gradient of Road (‰)	169.00		4.0‰				4.0‰				120.00					
Road design Elevation (m)	1.830	1.754	1.634	1.514	1.430	1.394	1.274	1.230	1.154	1.274	1.278	1.394	1.478	1.514	1.634	
Existing Ground Elevation (m)	1.83	1.74	1.59	1.59	1.57	1.56	1.55	1.52	1.51	1.51	1.50	1.50	1.50	1.49	1.47	
Earth Covering (m)		1.124	1.031	1.028	0.938	0.873	0.845	0.752	0.718	0.659	0.806	0.811	0.953	1.056	1.100	1.247
Invert Elevation (m)		-0.460	-0.487	-0.488	-0.514	-0.533	-0.541	-0.568	-0.578	-0.595	-0.622	-0.623	-0.649	-0.668	-0.676	-0.703
Total Accumulation Length (m)	0.0	30.0	31.0	60.0	81.0	90.0	120.0	131.0	150.0	180.0	181.0	210.0	231.0	240.0	270.0	

NO.	DATE	DESCRIPTIONS	BY	APRO.

REVISIONS

PROJECT MANAGEMENT UNIT FOR
HO CHI MINH CITY
WATER ENVIRONMENT IMPROVEMENT

THE DETAILED DESIGN STUDY ON HO CHI MINH CITY
WATER ENVIRONMENT IMPROVEMENT PROJECT
IN THE SOCIALIST REPUBLIC OF VIET NAM

PACKAGE B
PUMP DRAINAGE IMPROVEMENT
BEN ME COC (2) AREA
**PLAN AND PROFILE OF SEWER,
ROAD AND TEMPORARY DIKE (12)**
BM2 - S2 (M1-M10)

SCALE : AS SHOWN

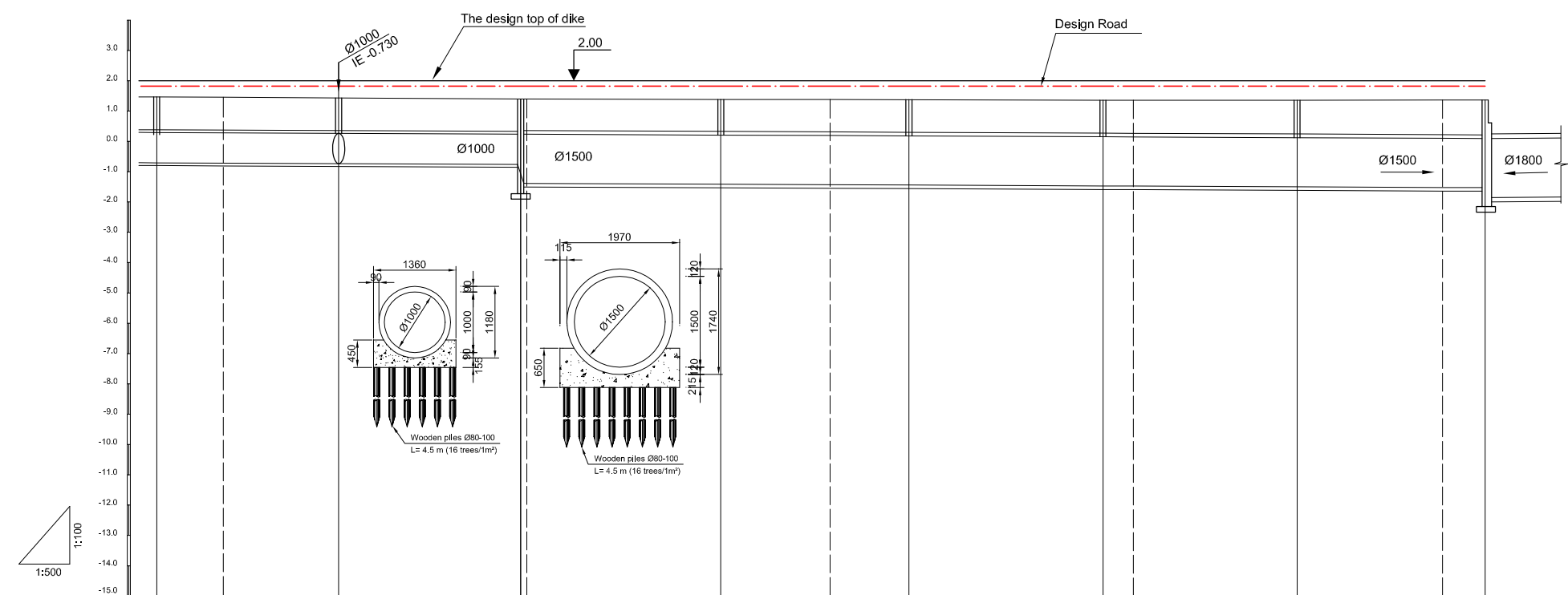
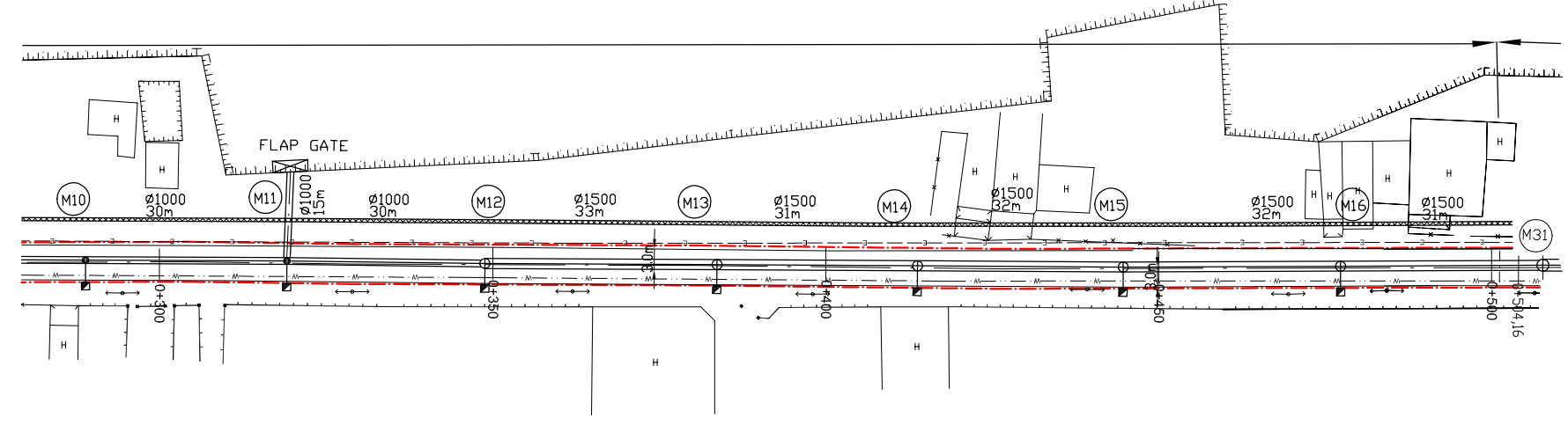
JAPAN INTERNATIONAL COOPERATION AGENCY (JICA)

PACIFIC CONSULTANTS INTERNATIONAL

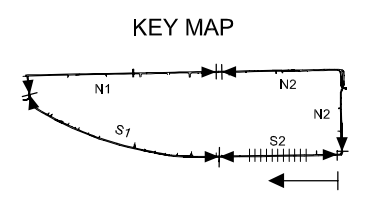
DESIGNED: _____ CHECKED: _____

DATE: _____ DWG. No. PB - PDI - BMC2- 212

TEMPORARY DIKE CONSTRUCTION - TYPE A: L = 510m



Location of Survey	0+300		0+350		0+400		0+450		0+500					
Manhole Number	M10	M11	M12	M13	M14	M15	M16	M17	M18	M31				
Diameter (mm)	Ø1000	Ø1000	Ø1500	Ø1500	Ø1500	Ø1500	Ø1500	Ø1500	Ø1500	Ø1800				
Gradient (‰)	0.9‰	0.9‰	0.9‰	0.9‰	0.9‰	0.9‰	0.9‰	0.9‰	0.9‰	0.9‰				
Length (m)	30.00	30.00	33.00	31.00	32.00	32.00	31.00							
Gradient of Road (‰)	124.00		4.0‰		2.4‰		96.00							
Road design Elevation (m)	1.634	1.590	1.514	1.394	1.380	1.262	1.190	1.138	1.215	1.227	1.292	1.35	1.367	
Existing Ground Elevation (m)	1.47	1.46	1.44	1.40	1.380	1.39	1.39	1.38	1.36	1.36	1.36	1.37	1.37	
Earth Covering (m)	1.247	1.213	1.154	1.061	1.028	0.929	0.873	0.833	0.938	0.955	1.044	1.124	1.147	
Invert Elevation (m)	-0.703	-0.713	-0.730	-0.757	-0.758	-1.287	-1.303	-1.315	-1.343	-1.348	-1.372	-1.394	-1.400	-1.850
Total Accumulation Length (m)	270.0	281.0	300.0	330.0	331.0	363.0	381.0	394.0	426.0	431.0	458.0	482.0	489.0	



LEGEND

	Sewer Line
	Sewer Line
	Planted Sewer
	Existing Sewer
	Telephone Cable
	Electric Cable
	Water Pipe
	Outlet Without Flap Gate
	Outlet With Flap Gate
	Temporary dike
	Design Road
	No. 1 Manhole
	No. 2 Manhole
	No. 3 Manhole
	No. 4 Manhole
	Special Manhole
	Inlet
	Existing Manhole
	Existing Inlet
	Telephone Cable Inspection Chamber
	Electric Cable Inspection Chamber
	Fire Hydrant

NO.	DATE	DESCRIPTIONS	BY	APRO.

REVISIONS

PROJECT MANAGEMENT UNIT FOR
HO CHI MINH CITY
WATER ENVIRONMENT IMPROVEMENT

THE DETAILED DESIGN STUDY ON HO CHI MINH CITY
WATER ENVIRONMENT IMPROVEMENT PROJECT
IN THE SOCIALIST REPUBLIC OF VIET NAM

PACKAGE B
PUMP DRAINAGE IMPROVEMENT
BEN ME COC (2) AREA
**PLAN AND PROFILE OF SEWER,
ROAD AND TEMPORARY DIKE (13)**
BM2 - S2 (M10-M17)

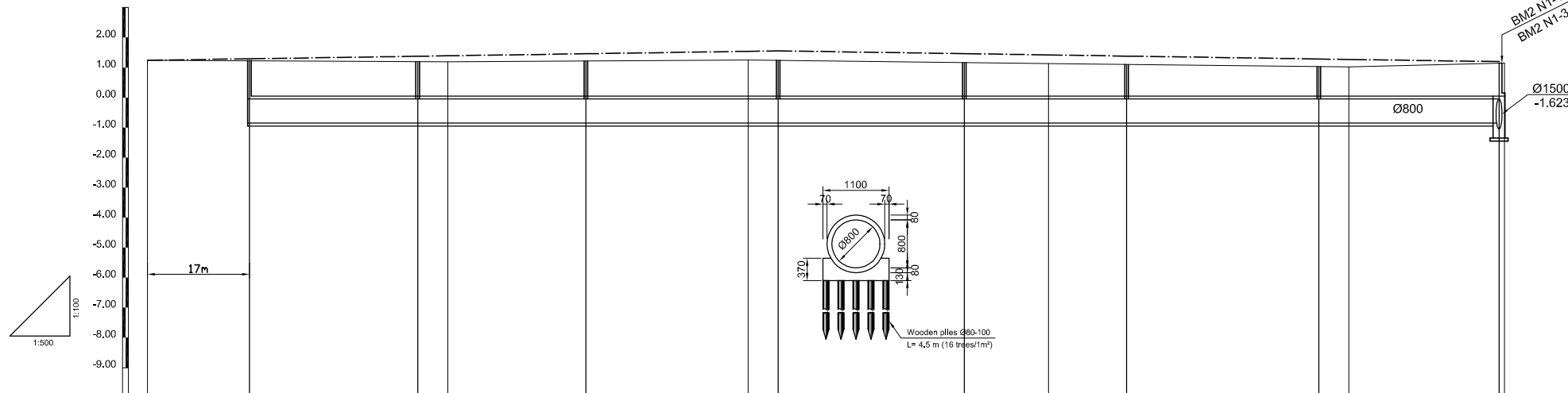
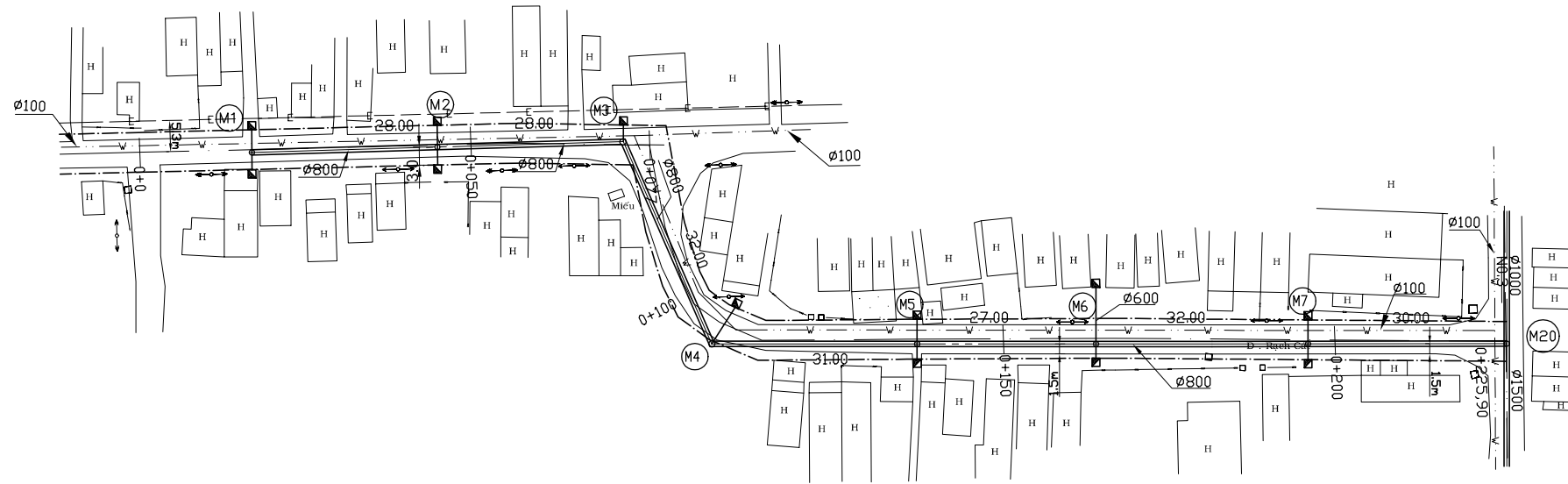
SCALE : AS SHOWN

JAPAN INTERNATIONAL COOPERATION AGENCY (JICA)

PACIFIC CONSULTANTS INTERNATIONAL

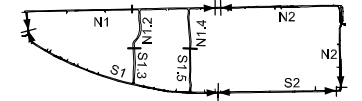
DESIGNED	CHECKED
----------	---------

DATE : _____ DWG. No. PB - PDI - BMC2- 213



Location of survey	0+00		0+50		0+100		0+150		0+200					
Manhole Number	M1	M2	M3	M4	M5	M6	M7	M20 (BM2 N1-3)						
Diameter (mm)	Ø800	Ø800	Ø800	Ø800	Ø800	Ø800	Ø800	Ø800						
Gradient (‰)	1.4	1.4	1.4	1.4	1.4	1.4	1.4	1.4						
Length (m)	17.00	28.00	28.00	32.00	31.00	27.00	32.00	30.00						
Gradient of Road (‰)	3‰		105.00			120.00		3‰						
Road design Elevation (m)	1.240	1.291	1.375	1.390	1.459	1.540	1.555	1.462	1.420	1.381	1.285	1.270	1.195	
Ground Elevation (m)	1.24	1.21	1.19	1.19	1.22	1.25	1.23	1.16	1.13	1.10	1.03	1.02	1.15	
Earth Covering (m)		1.041	1.165	1.186	1.287	1.406	1.428	1.381	1.356	1.338	1.287	1.276	1.238	
Invert Elevation (m)		-0.630	-0.670	-0.676	-0.708	-0.746	-0.753	-0.799	-0.816	-0.837	-0.882	-0.886	-0.923	-0.924
Total Accumulation Length (m)	0.00	28.00	33.00	56.00	83.00	88.00	119.00	132.00	146.00	178.00	183.00	208.00	208.90	

KEY MAP



LEGEND

- Sewer Line
- Sewer Line
- Planned Sewer
- Existing Sewer
- Telephone Cable
- Electric Cable
- Water Pipe
- Outlet Without Flap Gate
- Outlet With Flap Gate
- Design Road
- No. 1 Manhole (<600mm)
- No. 2 Manhole (<1000mm)
- No. 3 Manhole (<1500mm)
- No. 4 Manhole (<2000mm)
- Spacial Manhole
- Inlet
- Existing Manhole
- Existing Inlet
- Telephone Cable Inspection Chamber
- Electric Cable Inspection Chamber
- Fire Hydrant

NO.	DATE	DESCRIPTIONS	BY	APRO.
-----	------	--------------	----	-------

REVISIONS

PROJECT MANAGEMENT UNIT FOR
HO CHI MINH CITY
WATER ENVIRONMENT IMPROVEMENT

THE DETAILED DESIGN STUDY ON HO CHI MINH CITY
WATER ENVIRONMENT IMPROVEMENT PROJECT
IN THE SOCIALIST REPUBLIC OF VIET NAM

PACKAGE B
PUMP DRAINAGE IMPROVEMENT
BEN ME COC (2) AREA
**PLAN AND PROFILE OF SEWER,
ROAD AND TEMPORARY DIKE (14)**
(BM2 - N1.2)

SCALE : V= 1:100
V= 1:500

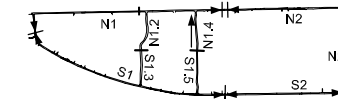
JICA JAPAN INTERNATIONAL COOPERATION AGENCY (JICA)

PACIFIC CONSULTANTS INTERNATIONAL

DESIGNED _____ CHECKED _____

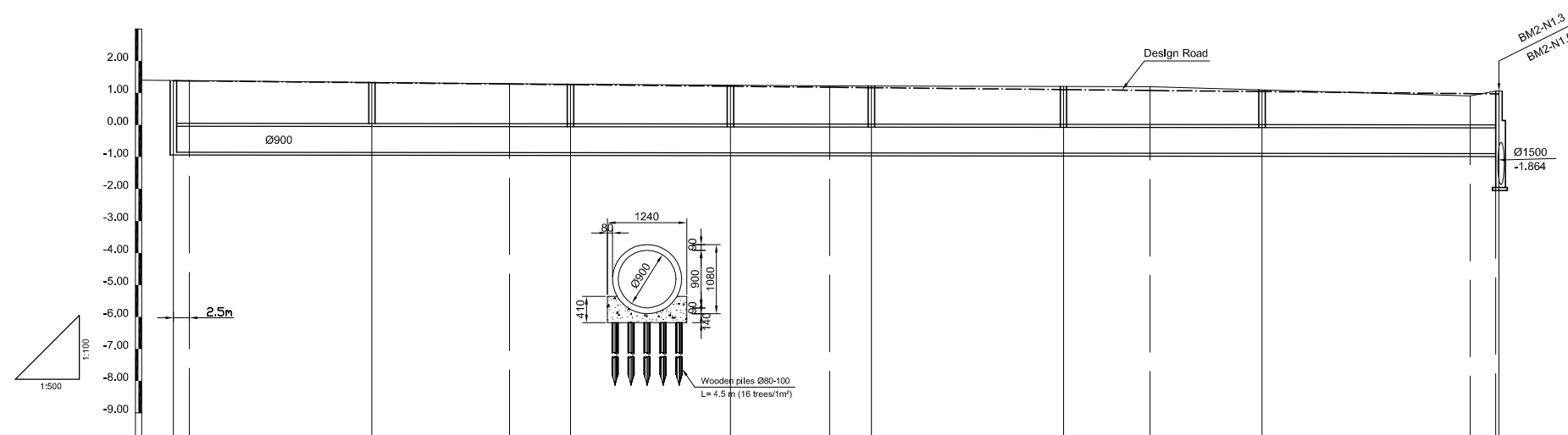
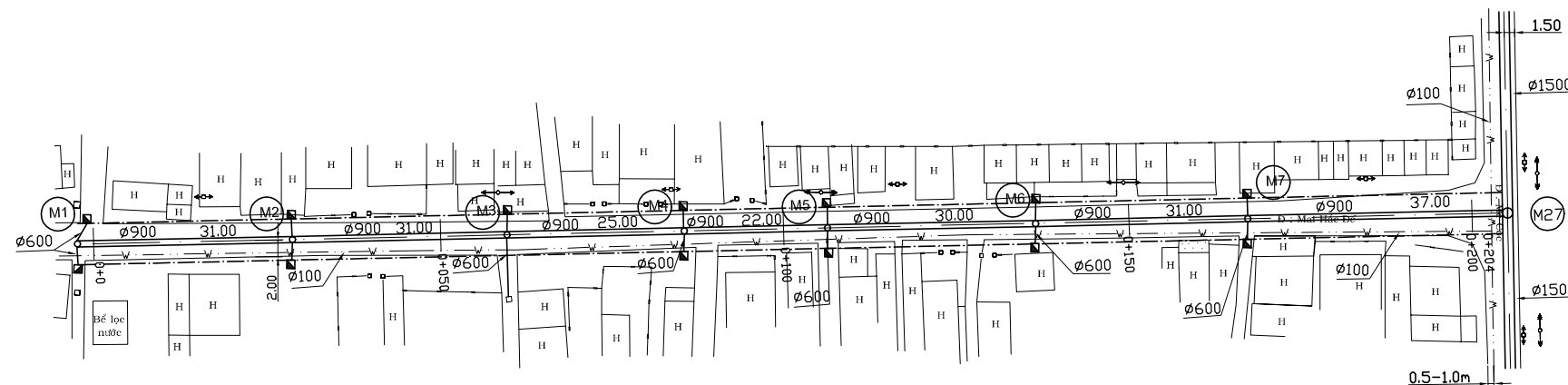
DATE : _____ DWG. No. PB - PDI - BMC2- 214

KEY MAP



LEGEND

	Sewer Line
	Sewer Line
	Planned Sewer
	Existing Sewer
	Telephone Cable
	Electric Cable
	Water Pipe
	Outlet Without Flap Gate
	Outlet With Flap Gate
	Design Road
	No. 1 Manhole (<600mm)
	No. 2 Manhole (<1000mm)
	No. 3 Manhole (<1500mm)
	No. 4 Manhole (<2000mm)
	Spatial Manhole
	Inlet
	Existing Manhole
	Existing Inlet
	Telephone Cable Inspection Chamber
	Electric Cable Inspection Chamber
	Fire Hydrant



Location of survey	0+00	0+50	0+100	0+150	0+200						
Manhole Number	M1	M2	M3	M4	M5	M6	M7	M27(BM2-N1.5)			
Diameter (mm)	Ø900	Ø900	Ø900	Ø900	Ø900	Ø900	Ø900	Ø900			
Gradient (‰)	1.2‰	1.2‰	1.2‰	1.2‰	1.2‰	1.2‰	1.2‰	1.2‰			
Length (m)	31.00	31.00	25.00	22.00	30.00	31.00	37.00				
Gradient of Road (‰)	207							2‰			
Road design Elevation (m)	1.400 1.394	1.338	1.296	1.276	1.226	1.194	1.182	1.122	1.094	1.060	0.994 0.986
Ground Elevation (m)	1.40	1.35	1.29	1.28	1.24	1.22	1.22	1.20	1.20	1.10	0.91 1.06
Earth Covering (m)	3.004	2.989	2.954	2.956	2.946	2.944	2.952	2.968	2.984	2.906	2.754 -0.86
Invert Elevation (m)	-0.612 -0.614	-0.649	-0.674	-0.686	-0.716	-0.734	-0.742	-0.778	-0.794	-0.816	-0.854 -0.86
Total Accumulation Length (m)	0.00 3.00	31.00	53.00	62.00	87.00	103.00	109.00	139.00	153.00	170.00	203.00 207.00

NO.	DATE	DESCRIPTIONS	BY	APRO.
-----	------	--------------	----	-------

REVISIONS

PROJECT MANAGEMENT UNIT FOR
HO CHI MINH CITY
WATER ENVIRONMENT IMPROVEMENT

THE DETAILED DESIGN STUDY ON HO CHI MINH CITY
WATER ENVIRONMENT IMPROVEMENT PROJECT
IN THE SOCIALIST REPUBLIC OF VIET NAM

PACKAGE B
PUMP DRAINAGE IMPROVEMENT
BEN ME COC (2) AREA
PLAN AND PROFILE OF SEWER,
ROAD AND TEMPORARY DIKE (15)
(BM2 - N1.4)

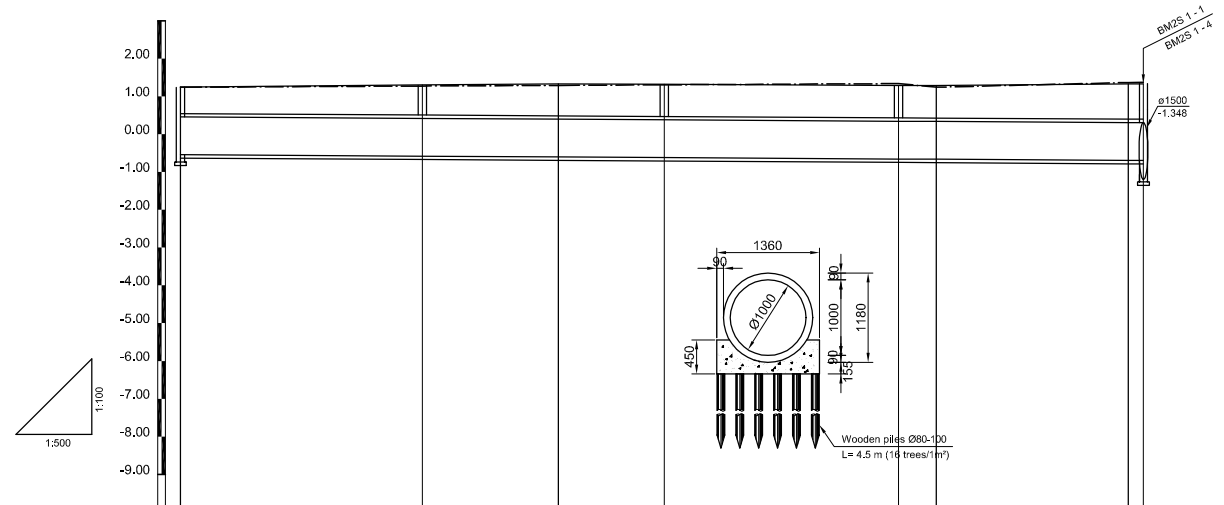
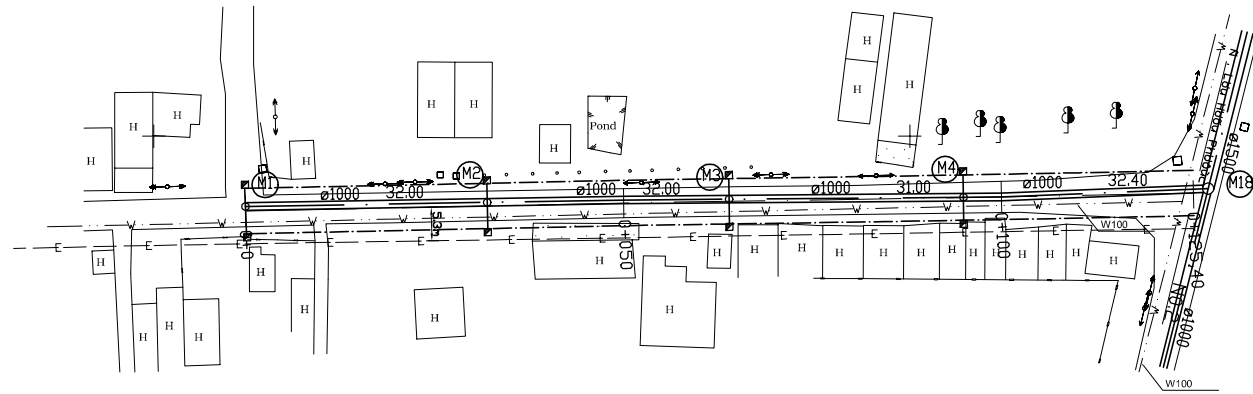
SCALE : V= 1:100
V= 1:500

JICA JAPAN INTERNATIONAL COOPERATION AGENCY (JICA)

PACIFIC CONSULTANTS INTERNATIONAL

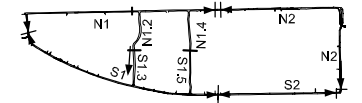
DESIGNED CHECKED

DATE : DWG. No. PB - PDI - BMC2- 215



Location of survey	0+00	0+50		0+100		
Manhole Number	M1	M2		M3	M4	M18(BM2 S1-1)
Diameter (mm)	Ø1000	Ø1000		Ø1000	Ø1000	Ø1000
Gradient (‰)	1.2‰	1.2‰		1.2‰	1.2‰	1.2‰
Length (m)	32	32		31	32.4	
Gradient of Road (‰)	1.0‰					
Road design Elevation (m)	1.240	1.272	1.290	1.304	1.335	1.365
Ground Elevation (m)	1.24	1.30	1.33	1.32	1.29	1.33
Earth Covering (m)	0.786	0.684	0.935	0.943	0.950	1.025
Invert Elevation (m)	-0.546	-0.564	-0.605	-0.623	-0.66	-0.695
Total Accumulation Length (m)	0.00	32.00	50.00	64.00	95.00	125.40
					100.00	127.40

KEY MAP



LEGEND

	Sewer Line
	Sewer Line
	Planned Sewer
	Existing Sewer
	Telephone Cable
	Electric Cable
	Water Pipe
	Outlet Without Flap Gate
	Outlet With Flap Gate
	Design Road
	No. 1 Manhole (<600mm)
	No. 2 Manhole (<1000mm)
	No. 3 Manhole (<1500mm)
	No. 4 Manhole (<2000mm)
	Spacial Manhole
	Inlet
	Existing Manhole
	Existing Inlet
	Telephone Cable Inspection Chamber
	Electric Cable Inspection Chamber
	Fire Hydrant

NO.	DATE	DESCRIPTIONS	BY	APRO.

REVISIONS

PROJECT MANAGEMENT UNIT FOR
HO CHI MINH CITY
WATER ENVIRONMENT IMPROVEMENT

THE DETAILED DESIGN STUDY ON HO CHI MINH CITY
WATER ENVIRONMENT IMPROVEMENT PROJECT
IN THE SOCIALIST REPUBLIC OF VIET NAM

PACKAGE B
PUMP DRAINAGE IMPROVEMENT
BEN ME COC (2) AREA
PLAN AND PROFILE OF SEWER,
ROAD AND TEMPORARY DIKE (16)
(BM2 - S1.3)

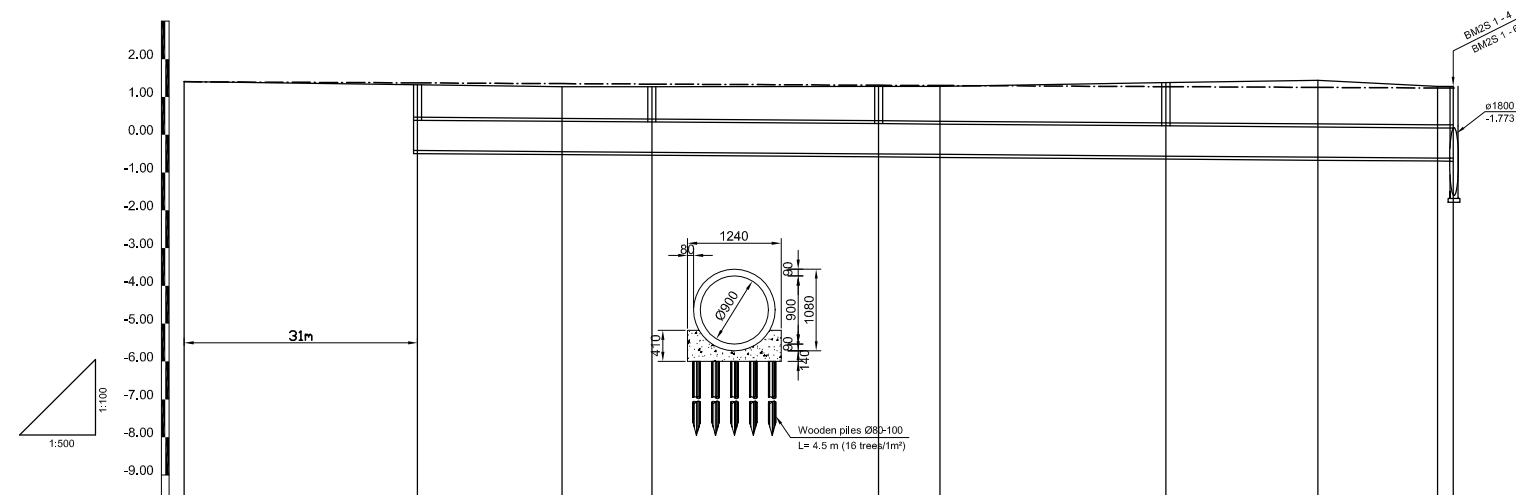
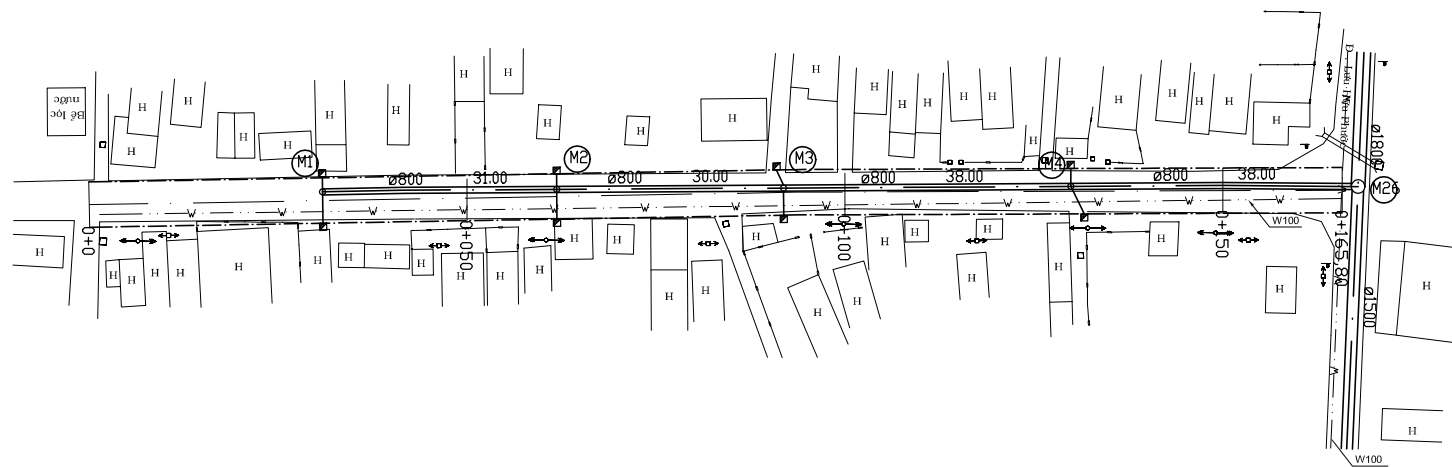
SCALE : V= 1:100
V= 1:500

JICA JAPAN INTERNATIONAL COOPERATION
AGENCY (JICA)

PACIFIC CONSULTANTS INTERNATIONAL

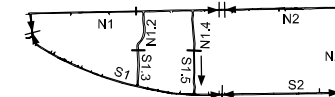
DESIGNED CHECKED

DATE : DWG. No. PB - PDI - BMC2- 216



Location of survey	0+00	0+50	0+100	0+150						
Manhole Number	M1	M2	M3	M4	M26(BM2S 1-4)					
Diameter (mm)	Ø800	Ø800	Ø800	Ø800						
Gradient (‰)	1.5‰	1.5‰	1.5‰	1.5‰						
Length (m)	31	30	38	38						
Gradient of Road (‰)	168.00			1‰						
Road design Elevation (m)	1.400	1.369	1.350	1.338	1.308	1.300	1.270	1.250	1.234	1.232
Ground Elevation (m)	1.40	1.32	1.27	1.27	1.28	1.28	1.38	1.44	1.28	1.28
Earth Covering (m)		0.739	0.717	0.734	0.789	0.802	0.946	1.037	0.900	0.903
Invert Elevation (m)		-0.419	-0.447	-0.464	-0.509	-0.522	-0.566	-0.597	-0.62	-0.623
Total Accumulation Length (m)	0.00	19.00	31.00	61.00	69.00	99.00	119.00	134.80	137.00	137.00

KEY MAP



LEGEND

- Sewer Line
- Planned Sewer
- Existing Sewer
- Telephone Cable
- Electric Cable
- Water Pipe
- Outlet Without Flap Gate
- Outlet With Flap Gate
- Design Road
- No. 1 Manhole (<600mm)
- No. 2 Manhole (<1000mm)
- No. 3 Manhole (<1500mm)
- No. 4 Manhole (<2000mm)
- Special Manhole
- Inlet
- Existing Manhole
- Existing Inlet
- Telephone Cable Inspection Chamber
- Electric Cable Inspection Chamber
- Fire Hydrant

NO.	DATE	DESCRIPTIONS	BY	APRO.
-----	------	--------------	----	-------

REVISIONS

PROJECT MANAGEMENT UNIT FOR
HO CHI MINH CITY
WATER ENVIRONMENT IMPROVEMENT

THE DETAILED DESIGN STUDY ON HO CHI MINH CITY
WATER ENVIRONMENT IMPROVEMENT PROJECT
IN THE SOCIALIST REPUBLIC OF VIET NAM

PACKAGE B
PUMP DRAINAGE IMPROVEMENT
BEN ME COC (2) AREA
PLAN AND PROFILE OF SEWER,
ROAD AND TEMPORARY DIKE (17)
(BM2 - S1.5)

SCALE : V= 1:100
V= 1:500

JICA JAPAN INTERNATIONAL COOPERATION
AGENCY (JICA)

PACIFIC CONSULTANTS INTERNATIONAL

DESIGNED _____ CHECKED _____

DATE : _____ DWG. No. PB - PDI - BMC2- 217