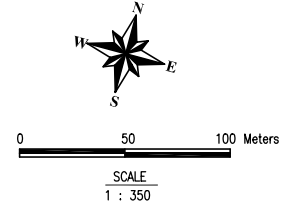
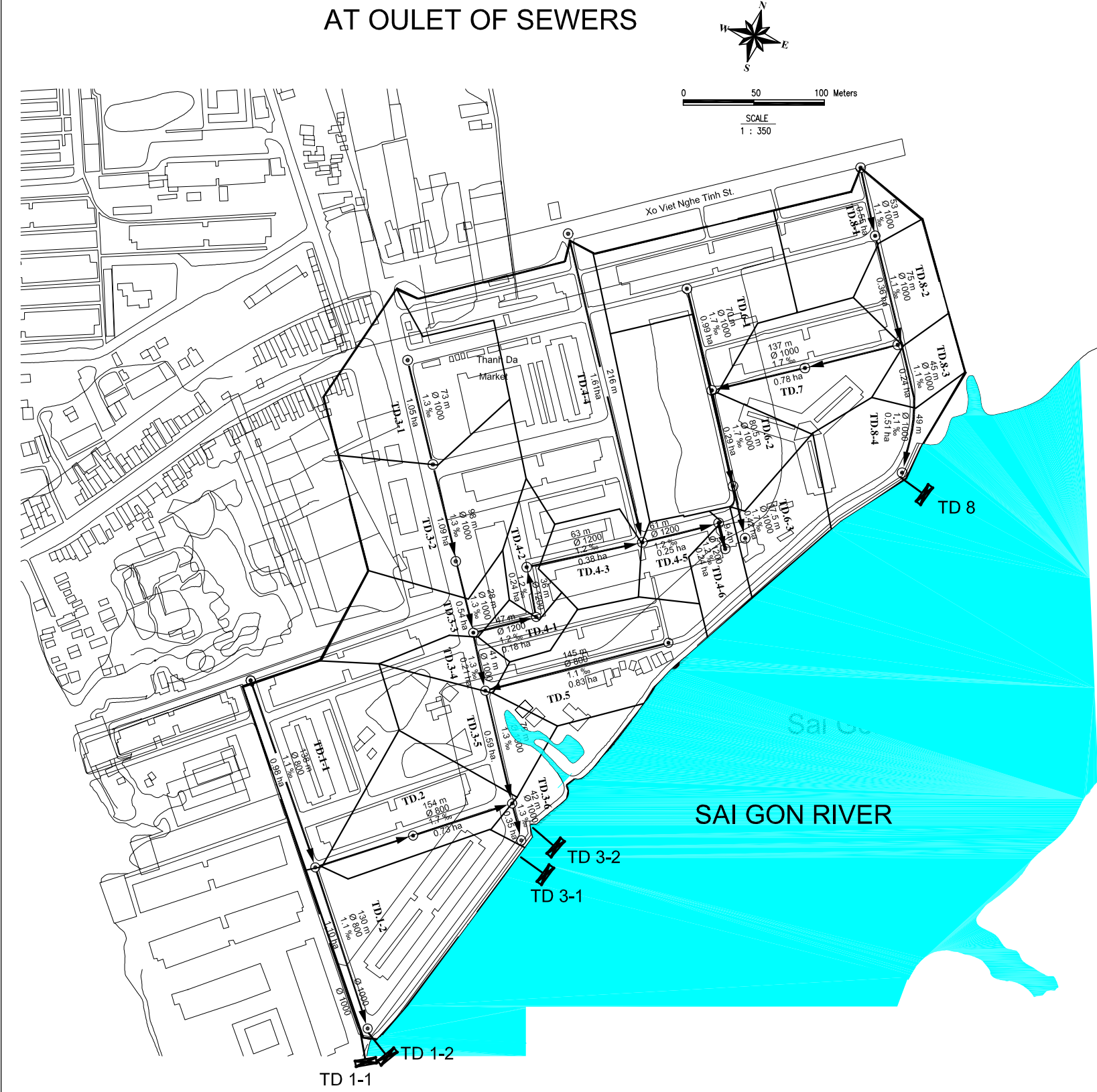
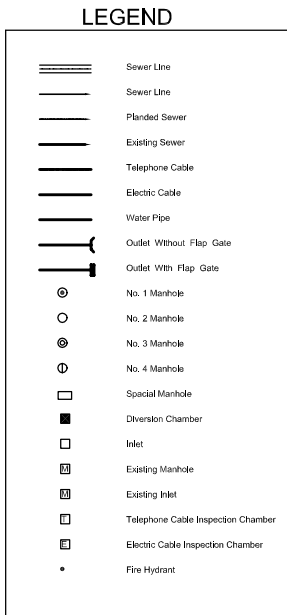
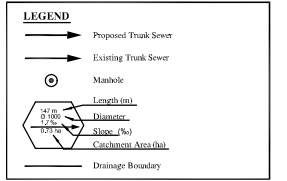
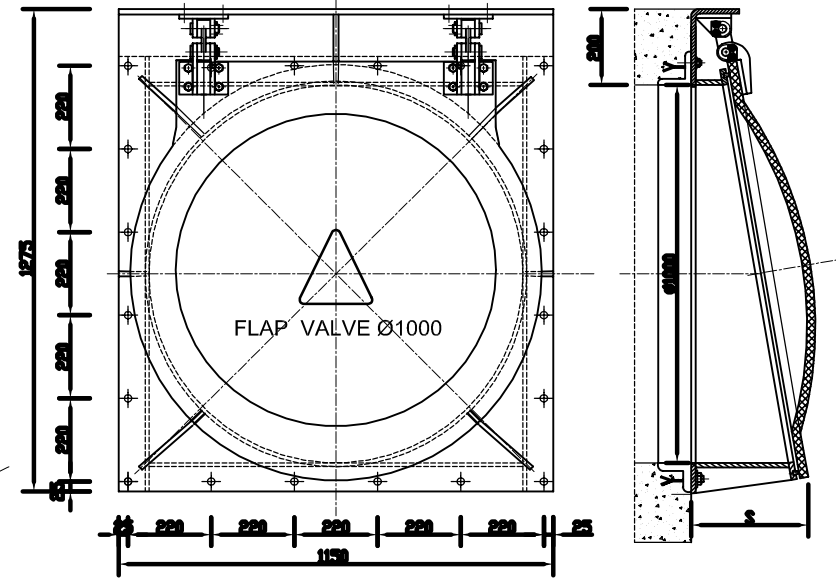


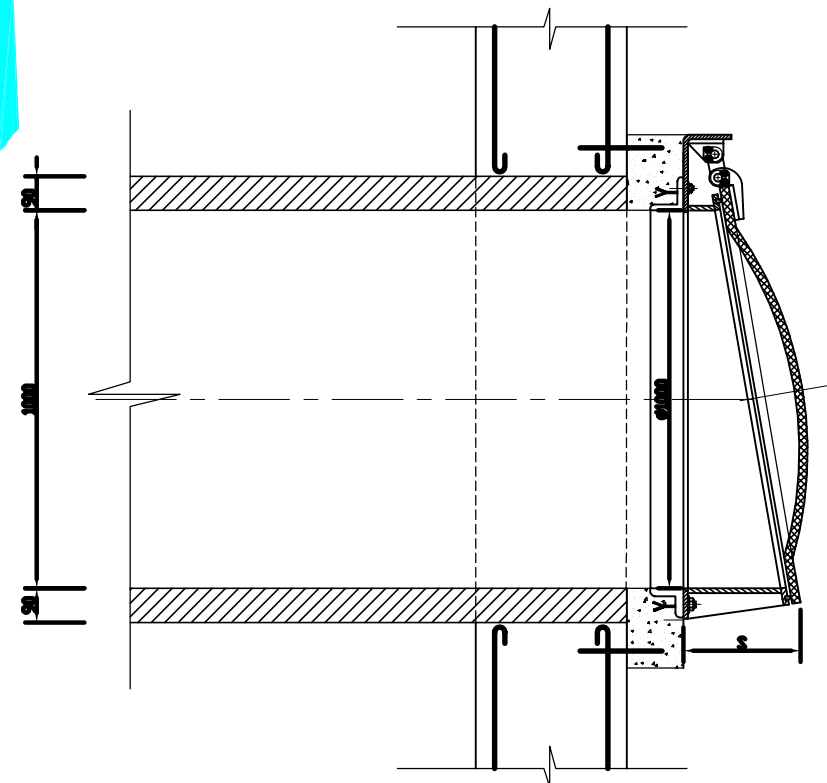
LOCATION OF EXISTING FLAP GATE AT OULET OF SEWERS



FLAP GATE Ø1000:



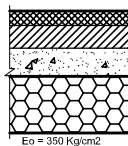
REPLACEMENT OF FLAP GATE Ø1000

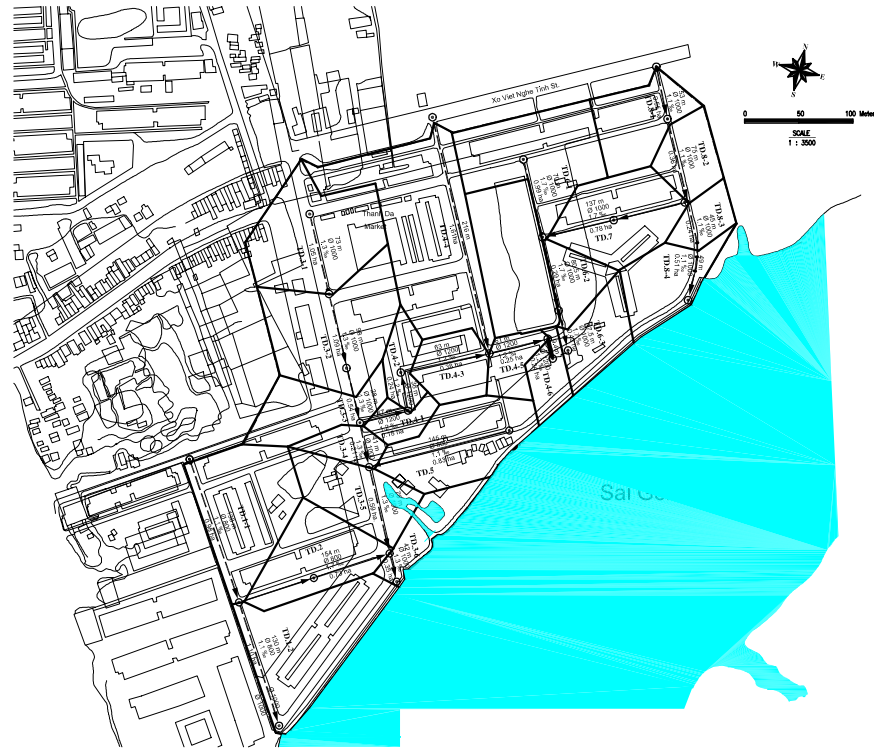
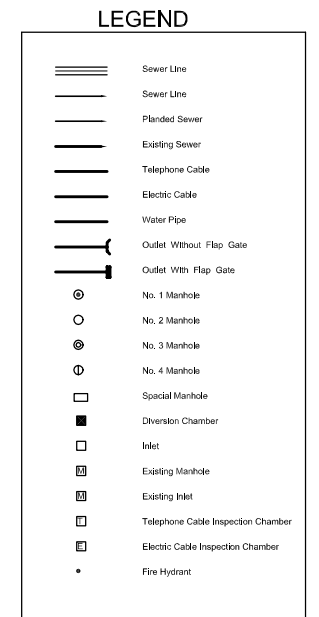
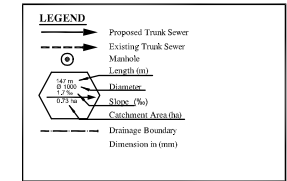


NO.	DATE	DESCRIPTIONS	BY	APRO.
REVISIONS				
PROJECT MANAGEMENT UNIT FOR HO CHI MINH CITY WATER ENVIRONMENT IMPROVEMENT				
THE DETAILED DESIGN STUDY ON HO CHI MINH CITY WATER ENVIRONMENT IMPROVEMENT PROJECT IN THE SOCIALIST REPUBLIC OF VIET NAM				
PACKAGE B PUMP DRAINAGE IMPROVEMENT				
REPLACEMENT OF EXISTING FLAP GATE				
SCALE : AS SHOWN				
JAPAN INTERNATIONAL COOPERATION AGENCY (JICA)				
PACIFIC CONSULTANTS INTERNATIONAL				
DESIGNED		CHECKED		
DATE :		DWG. No. PB - PDI - TD - 218		

PAVEMENT STRUCTURE OF THANH DA

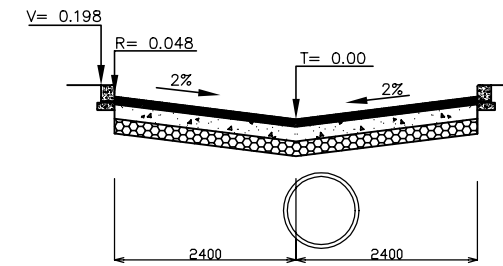
GENERAL PLAN

No	Name of road	Existing wide (m)			Length of curb (m)	Detail Quantity of Pavement with existing wide in Thanh Da Area					Pavement area (m2)	RECONSTRUCTION PAVEMENT (LOCAL STREET)	
		Road bed	Pavement (Existing)	Side walk		A.C Wearing (m3/ton)	A.C Binder (m3/ton)	Agg. 2-4 Base (m3)	Agg.4-6 Subbase (m3)	Tack Coat (Litres)			Prime Coat (Litres)
1	THANH DA				2x709.0	152.0/334.0	152.0/334.0	582.0	613.0	1532.0	4595.0	3063.0	Type P3: demand elastic modulus $E_{yc} = 1600 \text{ kg/cm}^2$ 
2	TD.7, TD.6-2, TD.6-3	10.90	4.40	5.80+0.90	2x206.00	45.0/99.0	45.0/99.0	172.0	181.0	453.0	1359.0	906.0	
3	TD.4-1, TD.4-3, TD.4-5, TD.4-6	7.36	4.17	2.33+1.30	2x222.00	46.0/101.0	46.0/101.0	176.0	185.0	463.0	1389.0	926.0	
4	TD.5	4.80	4.80	0.00	2x134.00	32.0/70.0	32.0/70.0	122.0	129.0	322.0	965.0	643.0	
5	TD.2	10.60	4.00	0.60+6.00	2x147.00	29.0/64.0	29.0/64.0	112.0	118.0	294.0	882.0	588.0	49 cm IS TOTAL THICKNESS OF PAVEMENT



TYPICAL CROSS SECTION OF ROAD. Scale: 1:50

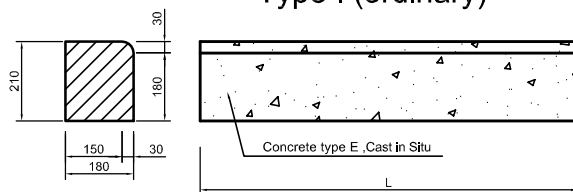
TYPICAL CROSS SECTION OF ROAD: S3



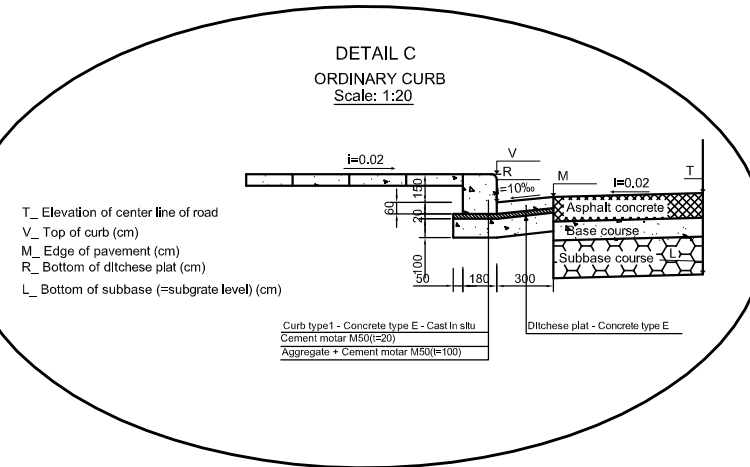
THANH DA AREA
Scale: 1:3500

a) CURB Scale: 1:10

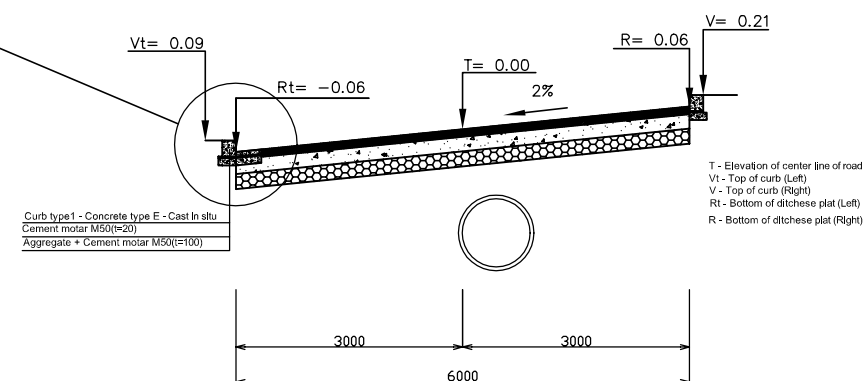
Type I (ordinary)



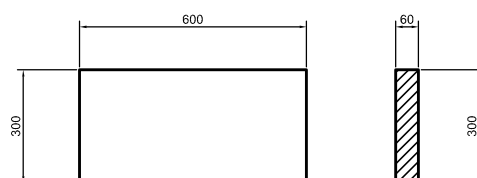
DETAIL C
ORDINARY CURB
Scale: 1:20



TYPICAL CROSS SECTION OF ROAD: S2



b) DITCHESE PLATE (L DITCHESE)



NO.	DATE	DESCRIPTIONS	BY	APRO.

REVISIONS

PROJECT MANAGEMENT UNIT FOR
HO CHI MINH CITY
WATER ENVIRONMENT IMPROVEMENT

THE DETAILED DESIGN STUDY ON HO CHI MINH CITY
WATER ENVIRONMENT IMPROVEMENT PROJECT
IN THE SOCIALIST REPUBLIC OF VIET NAM

PACKAGE B
PUMP DRAINAGE IMPROVEMENT
**ROAD WORKS IN
THANH DA AREA**

SCALE : AS SHOW

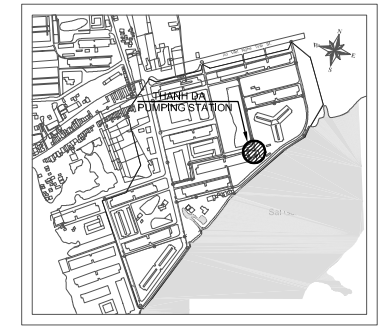
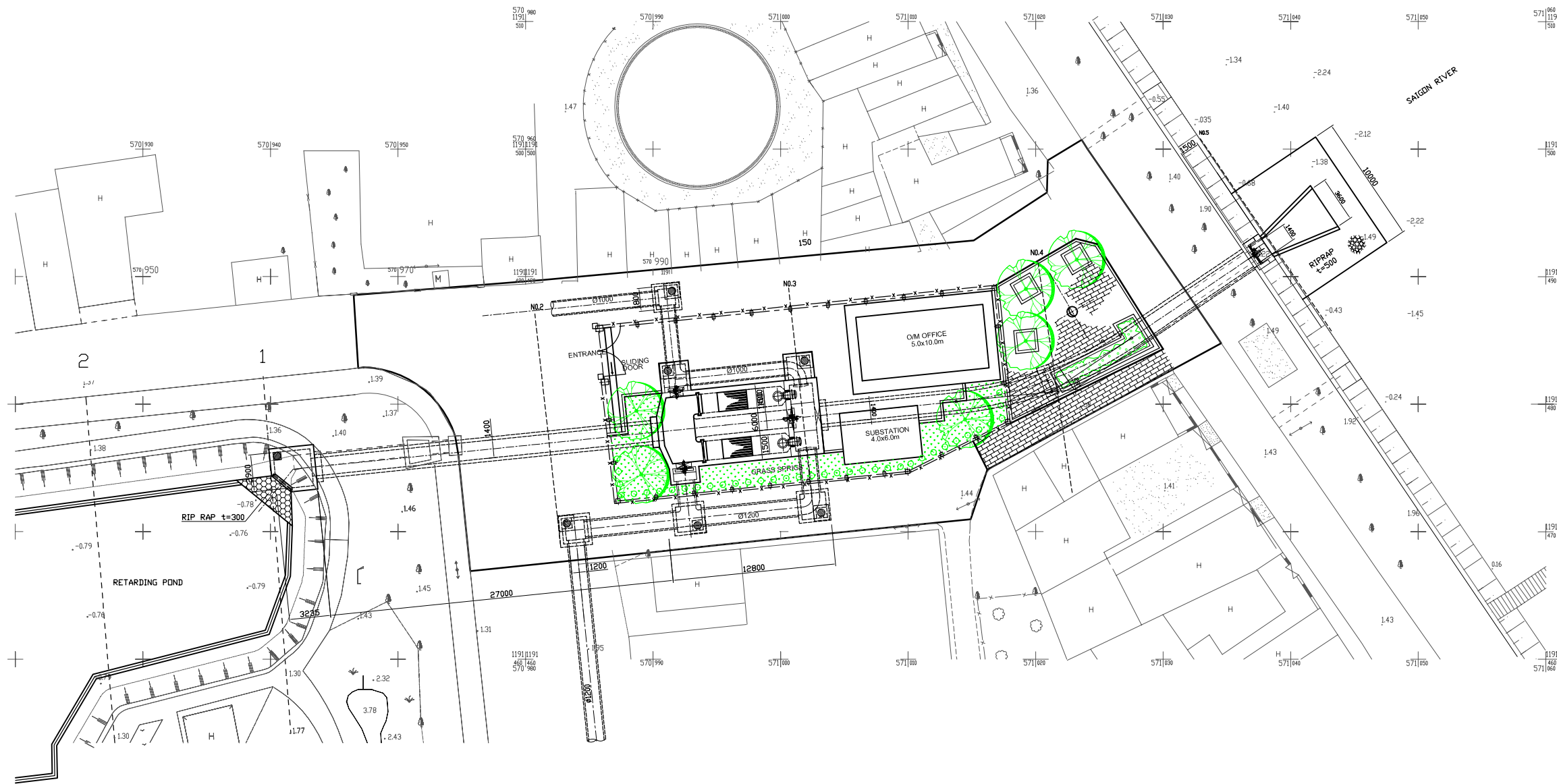
JICA JAPAN INTERNATIONAL COOPERATION
AGENCY (JICA)

PACIFIC CONSULTANTS INTERNATIONAL

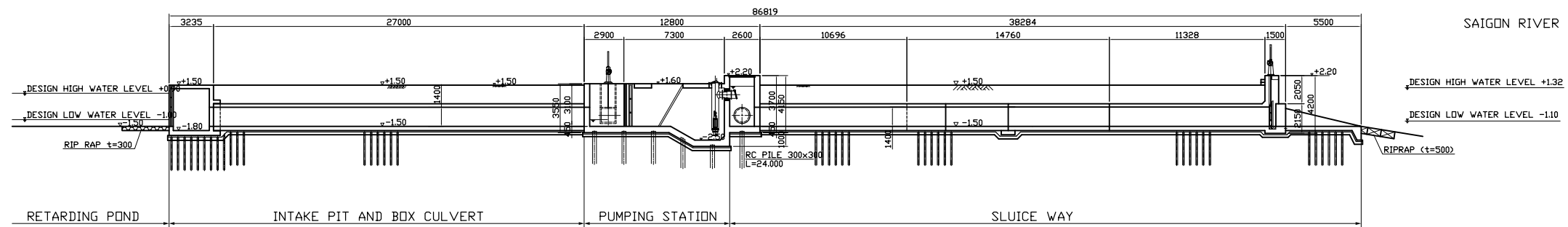
DESIGNED _____ CHECKED _____

DATE : _____ DWG. No. PB - PDI - TD - 219

PLAN S = 1 : 200



PROFILE



NO.	DATE	DESCRIPTIONS	BY	APRO.

REVISIONS

PROJECT MANAGEMENT UNIT FOR
HO CHI MINH CITY
WATER ENVIRONMENT IMPROVEMENT

THE DETAILED DESIGN STUDY ON HO CHI MINH CITY
WATER ENVIRONMENT IMPROVEMENT PROJECT
IN THE SOCIALIST REPUBLIC OF VIET NAM

PACKAGE B
PUMP DRAINAGE IMPROVEMENT
THANH DA PUMPING STATION
GENERAL LAYOUT OF
THANH DA PUMPING STATION

SCALE = 1 : 200

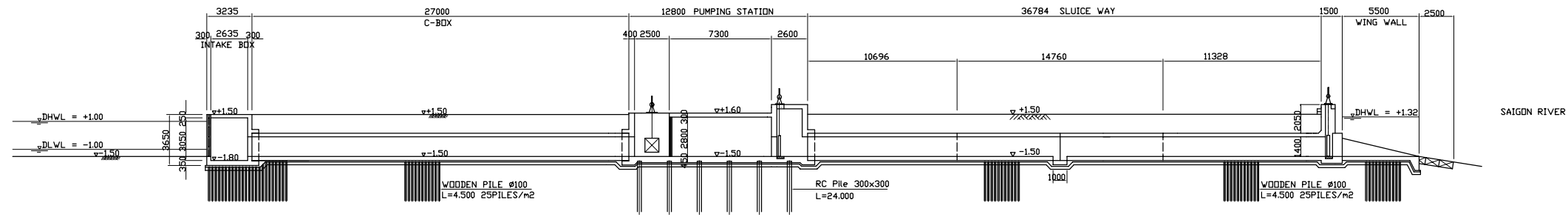
JICA JAPAN INTERNATIONAL COOPERATION
AGENCY (JICA)

PACIFIC CONSULTANTS INTERNATIONAL

DESIGNED CHECKED

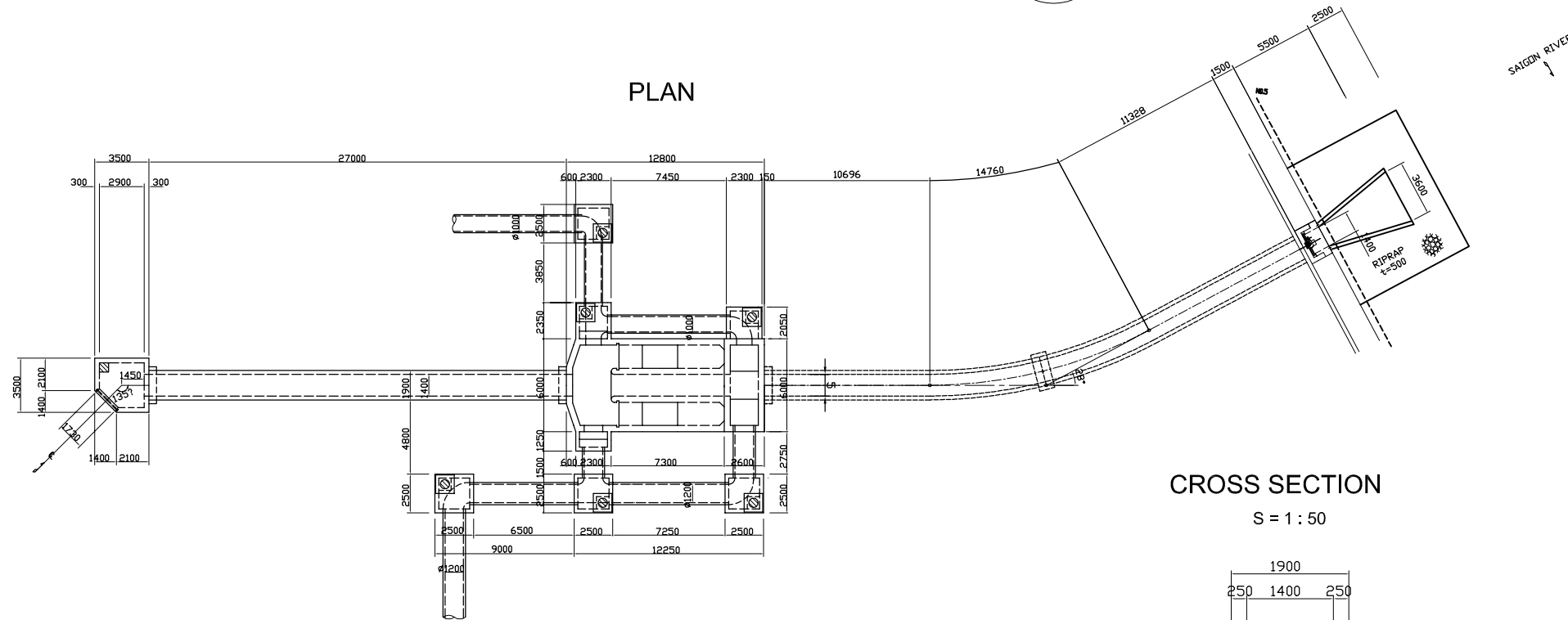
DATE : DWG. No. PB - PDI - TD - 220

PROFILE



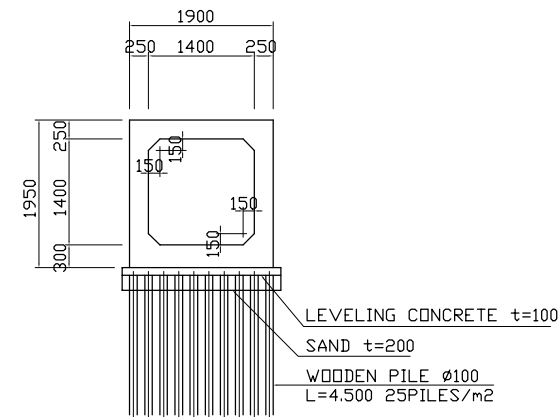
IA=28°
R=30.000
TL=7.4798
CL=14.6608
SL=0.9184

PLAN



CROSS SECTION

S = 1 : 50



NO.	DATE	DESCRIPTIONS	BY	APRO.
-----	------	--------------	----	-------

REVISIONS

PROJECT MANAGEMENT UNIT FOR
HO CHI MINH CITY
WATER ENVIRONMENT IMPROVEMENT

THE DETAILED DESIGN STUDY ON HO CHI MINH CITY
WATER ENVIRONMENT IMPROVEMENT PROJECT
IN THE SOCIALIST REPUBLIC OF VIET NAM

PACKAGE B
PUMP DRAINAGE IMPROVEMENT
THANH DA PUMPING STATION
PLAN AND PROFILE OF
THANH DA PUMPING STATION

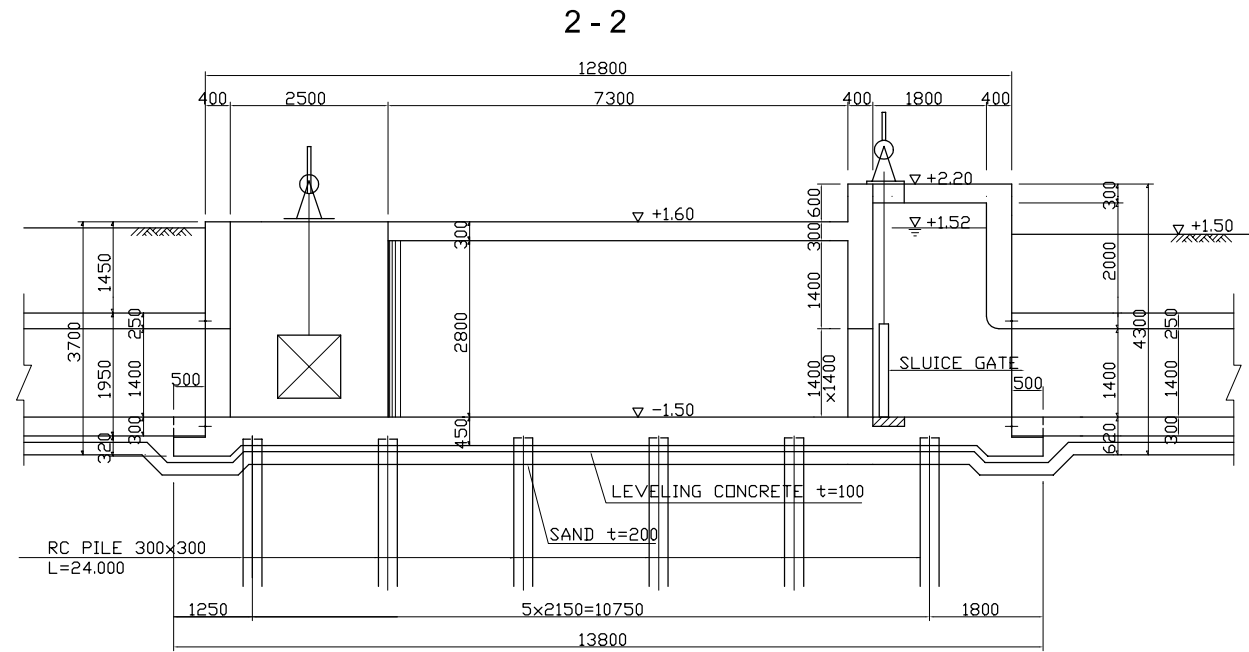
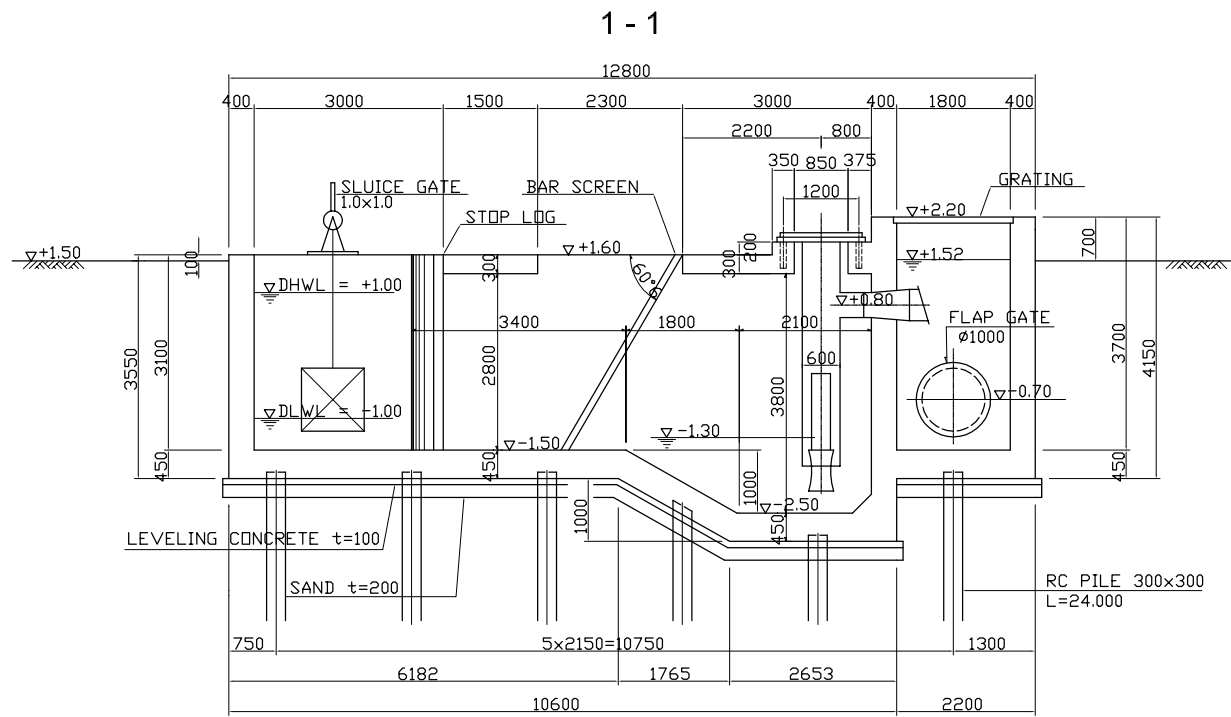
SCALE = 1 : 200

JICA JAPAN INTERNATIONAL COOPERATION
AGENCY (JICA)

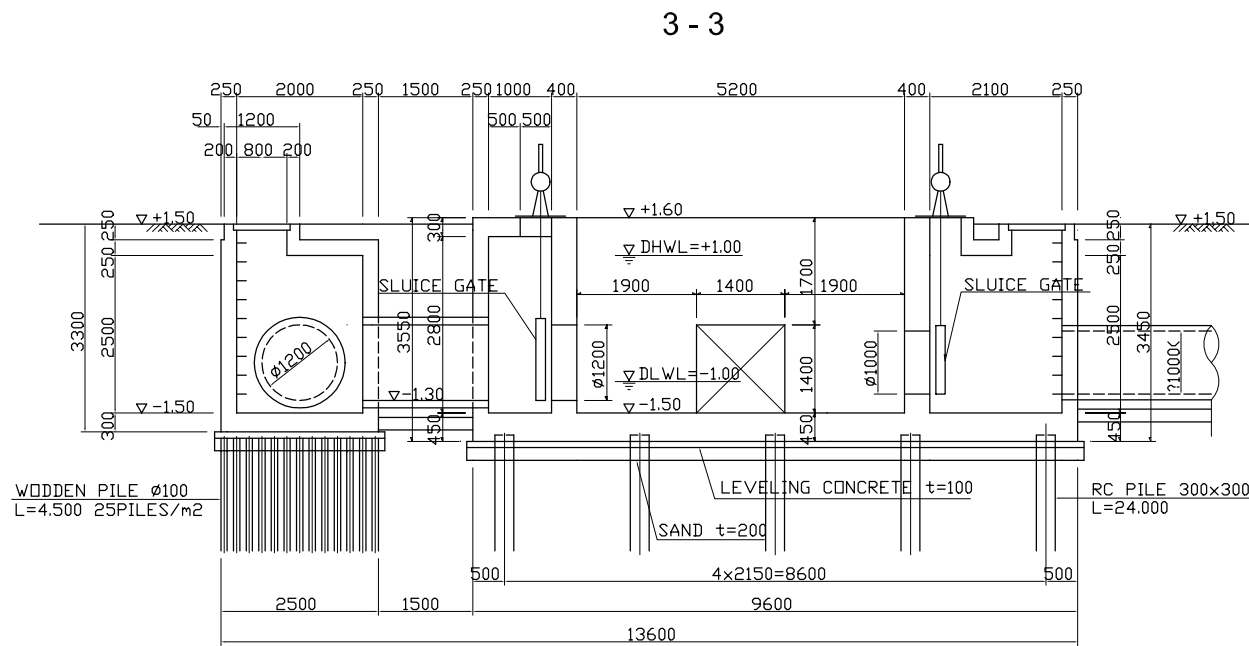
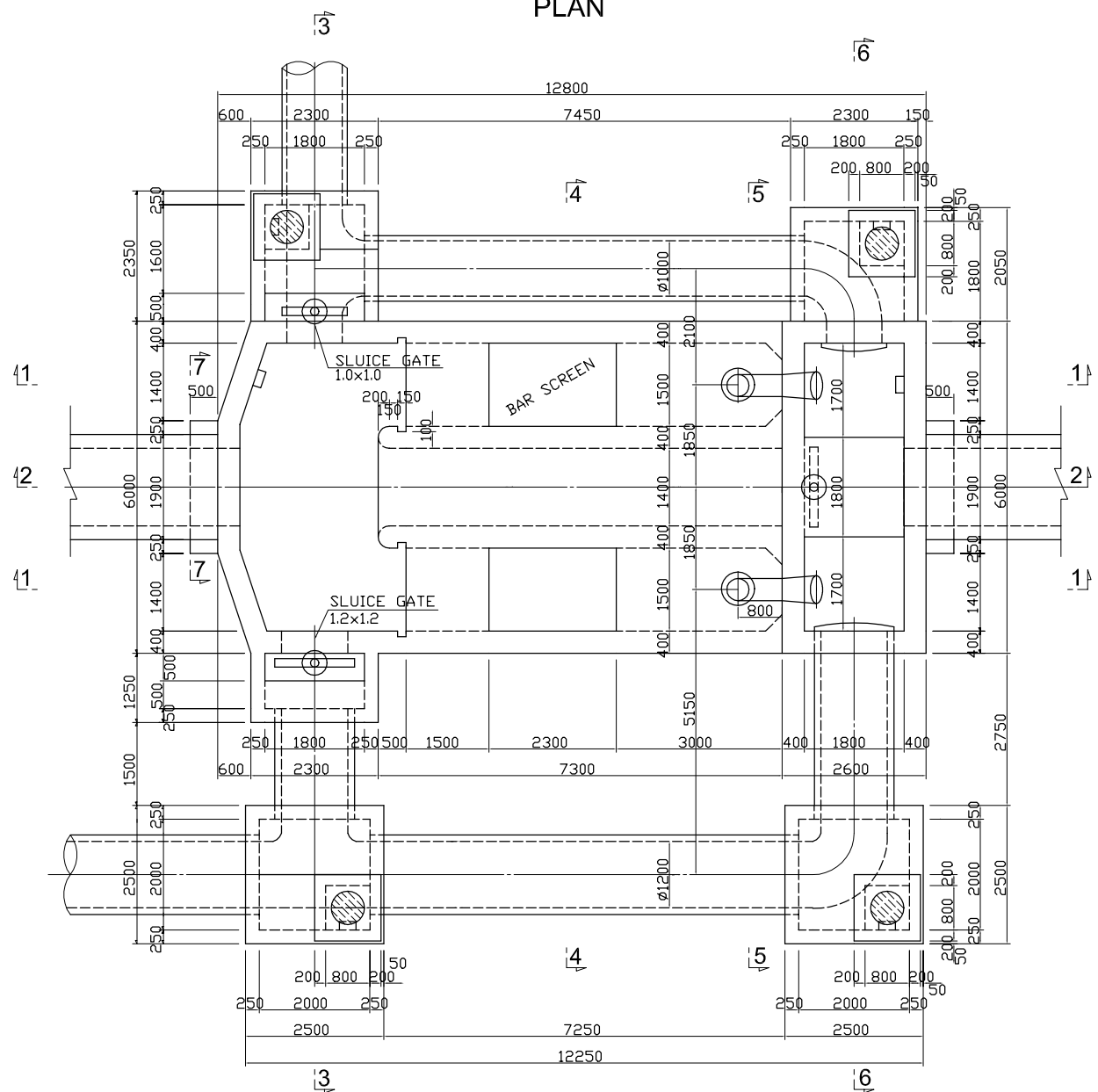
PACIFIC CONSULTANTS INTERNATIONAL

DESIGNED CHECKED

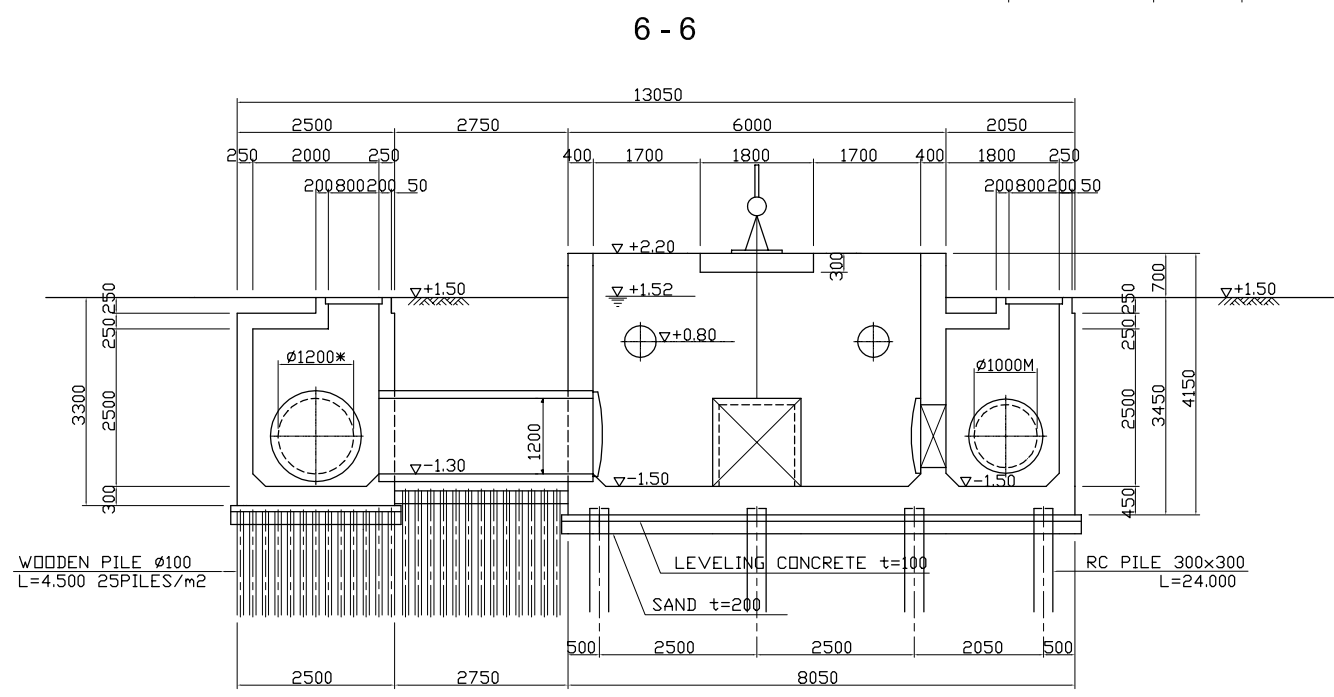
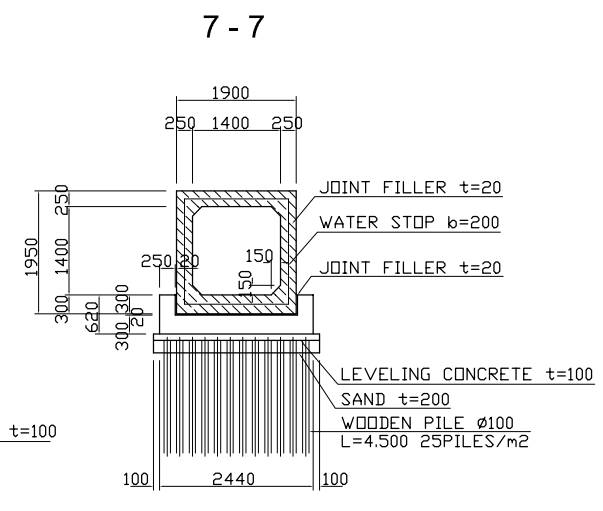
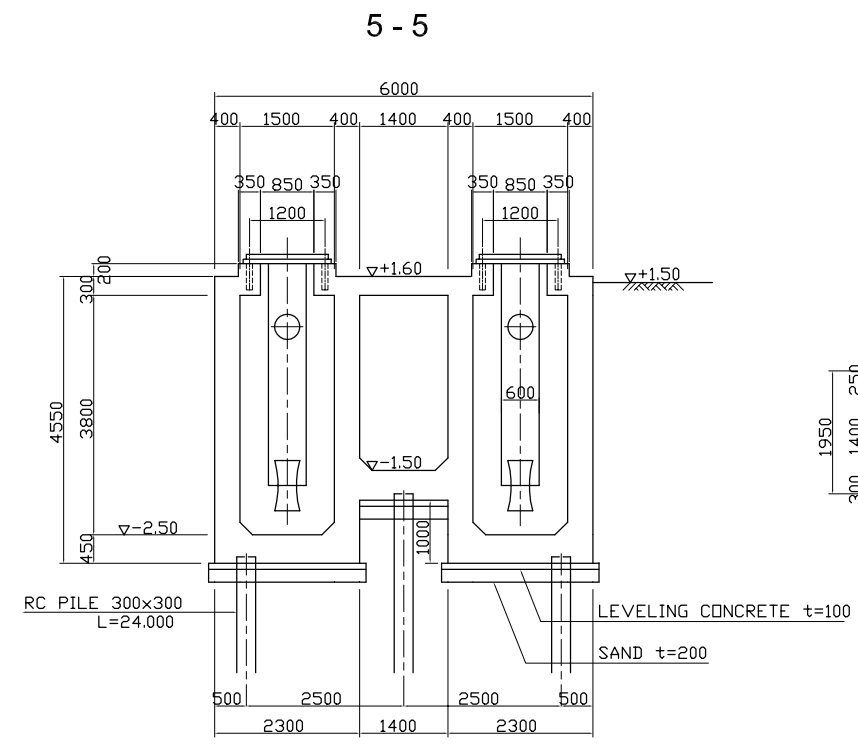
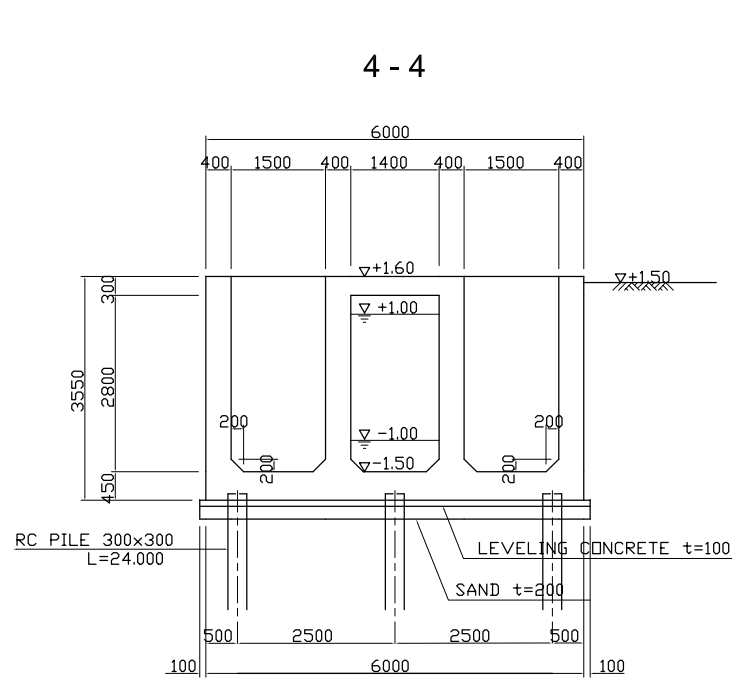
DATE : DWG. No. PB - PDI - TD - 221



PLAN



NO.	DATE	DESCRIPTIONS	BY	APPRO.
REVISIONS				
PROJECT MANAGEMENT UNIT FOR HO CHI MINH CITY WATER ENVIRONMENT IMPROVEMENT				
THE DETAILED DESIGN STUDY ON HO CHI MINH CITY WATER ENVIRONMENT IMPROVEMENT PROJECT IN THE SOCIALIST REPUBLIC OF VIET NAM				
PACKAGE B PUMP DRAINAGE IMPROVEMENT THANH DA PUMPING STATION PLAN AND SECTION OF INLET, PUM PIT AND DISCHARGE BASIN (1)				
SCALE = 1 : 60				
JAPAN INTERNATIONAL COOPERATION AGENCY (JICA)				
PACIFIC CONSULTANTS INTERNATIONAL				
DESIGNED		CHECKED		
DATE :		DWG. No. PB - PDI - TD - 222		



NO.	DATE	DESCRIPTIONS	BY	APRO.
-----	------	--------------	----	-------

REVISIONS

PROJECT MANAGEMENT UNIT FOR
HO CHI MINH CITY
WATER ENVIRONMENT IMPROVEMENT

THE DETAILED DESIGN STUDY ON HO CHI MINH CITY
WATER ENVIRONMENT IMPROVEMENT PROJECT
IN THE SOCIALIST REPUBLIC OF VIET NAM

PACKAGE B
PUMP DRAINAGE IMPROVEMENT
THANH DA PUMPING STATION
PLAN AND SECTION OF
PUMP PIT AND DISCHARGE BASIN (2)

SCALE = 1 : 60

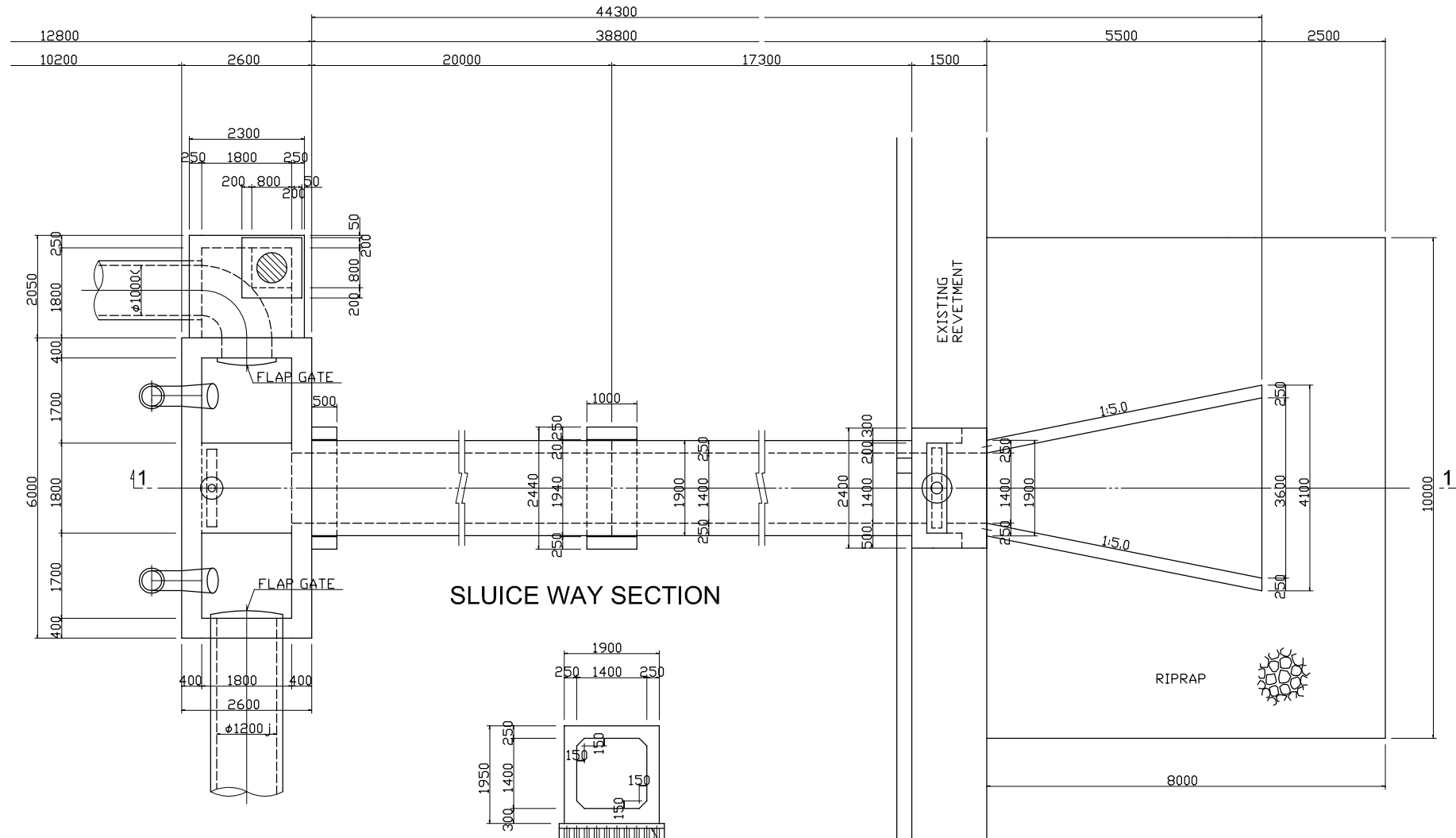
JAPAN INTERNATIONAL COOPERATION
AGENCY (JICA)

PACIFIC CONSULTANTS INTERNATIONAL

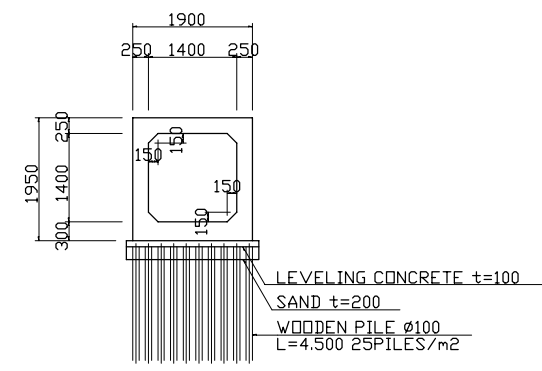
DESIGNED _____ CHECKED _____

DATE : _____ DWG. No. PB - PDI - TD - 223

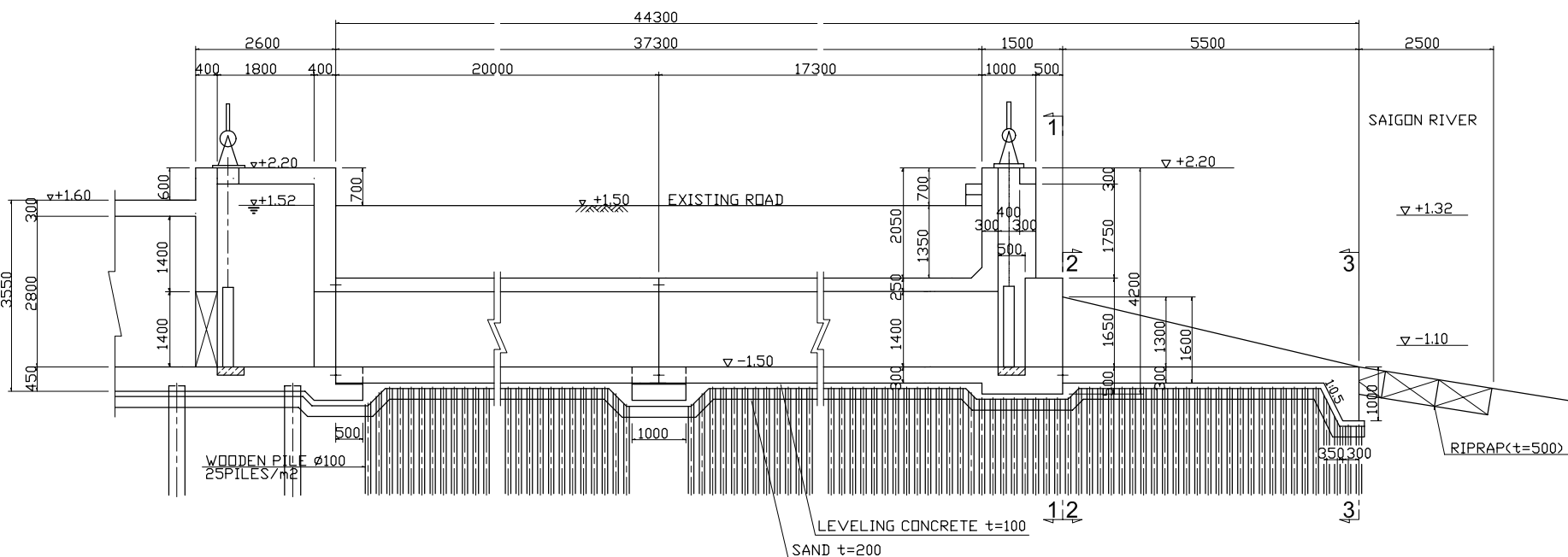
PLAN



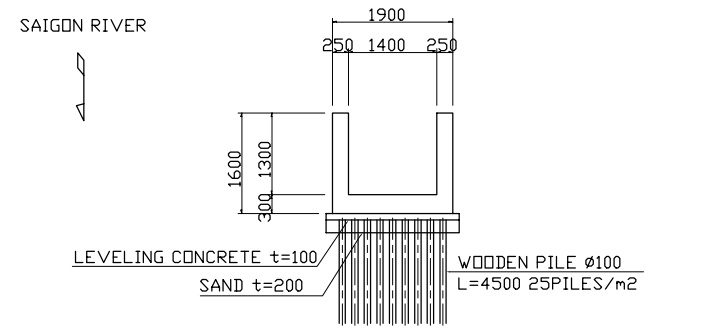
SLUICE WAY SECTION



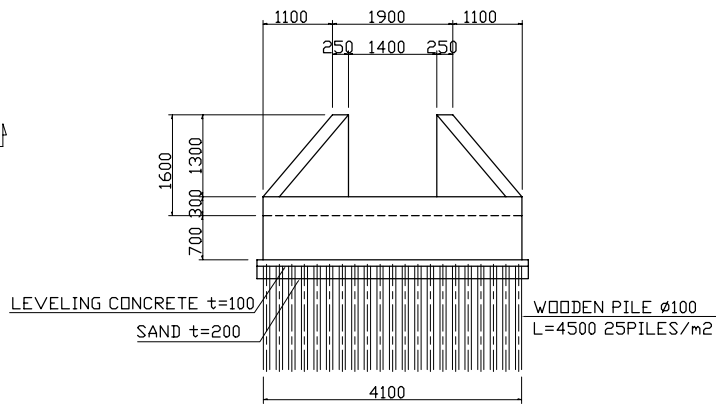
PROFILE



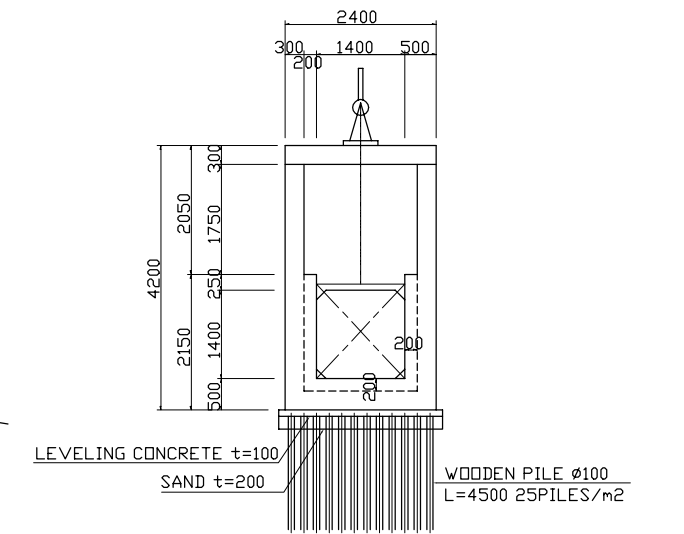
2 - 2





3 - 3

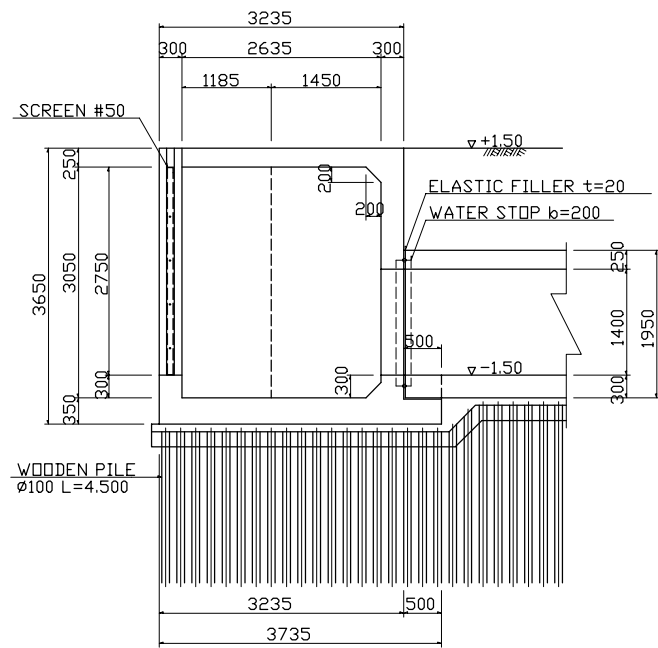


1 - 1

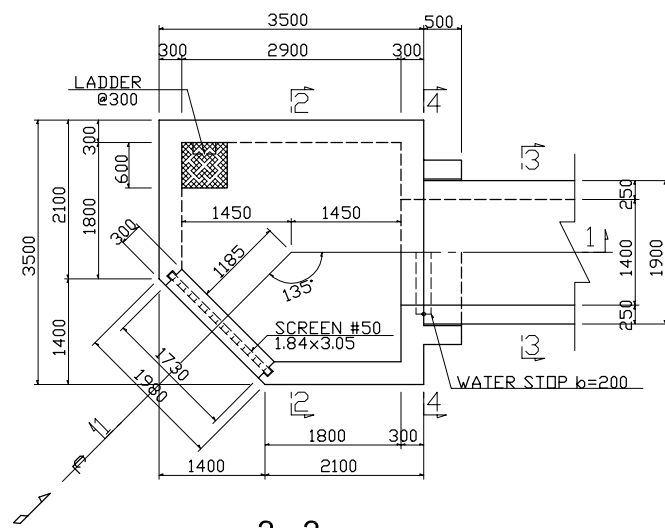


NO.	DATE	DESCRIPTIONS	BY	APRO.
REVISIONS				
PROJECT MANAGEMENT UNIT FOR HO CHI MINH CITY WATER ENVIRONMENT IMPROVEMENT				
THE DETAILED DESIGN STUDY ON HO CHI MINH CITY WATER ENVIRONMENT IMPROVEMENT PROJECT IN THE SOCIALIST REPUBLIC OF VIET NAM				
PACKAGE B PUMP DRAINAGE IMPROVEMENT THANH DA PUMPING STATION PLAN AND SECTION OF DISCHARGE BASIN AND SLUICE WAY				
SCALE = 1/60				
 JAPAN INTERNATIONAL COOPERATION AGENCY (JICA)				
 PACIFIC CONSULTANTS INTERNATIONAL				
DESIGNED		CHECKED		
DATE :		DWG. No. PB - PDI - TD - 224		

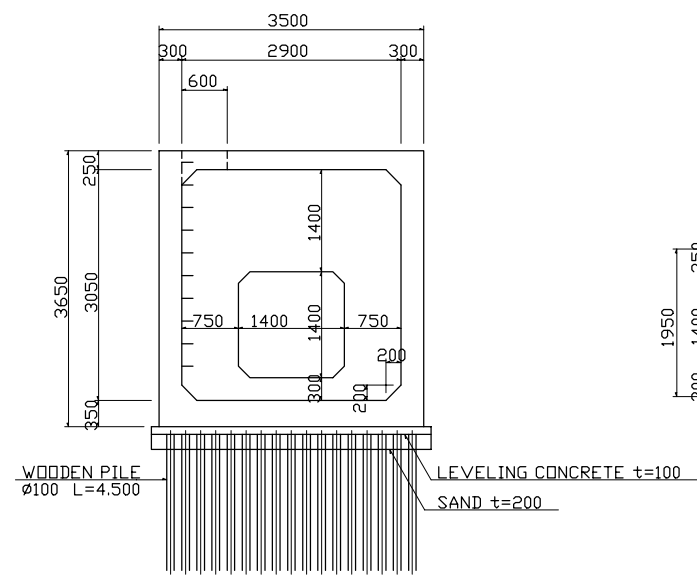
STRUCTURAL S=1:50
1 - 1



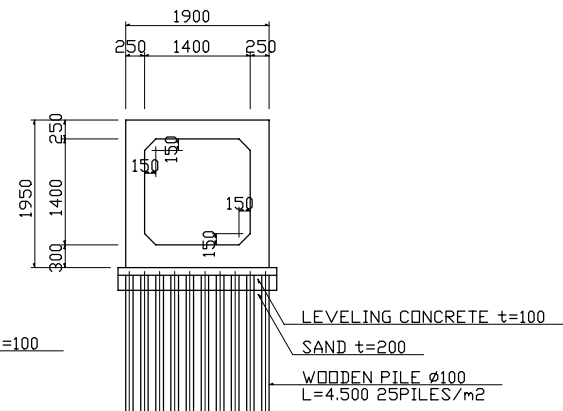
PLAN



2 - 2

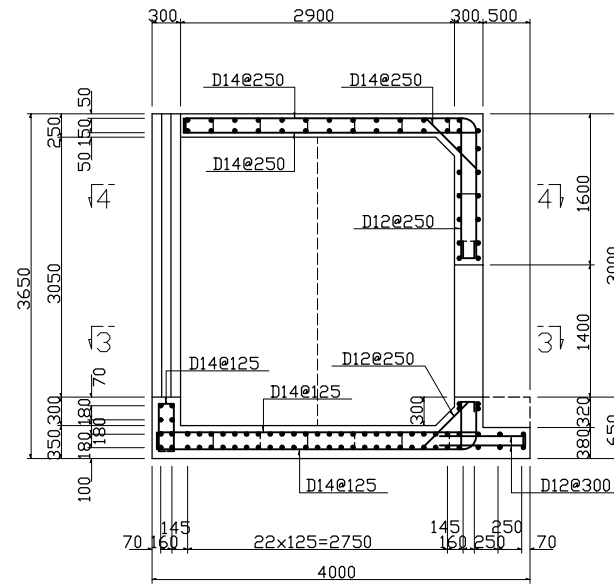


SLUICE WAY
3 - 3

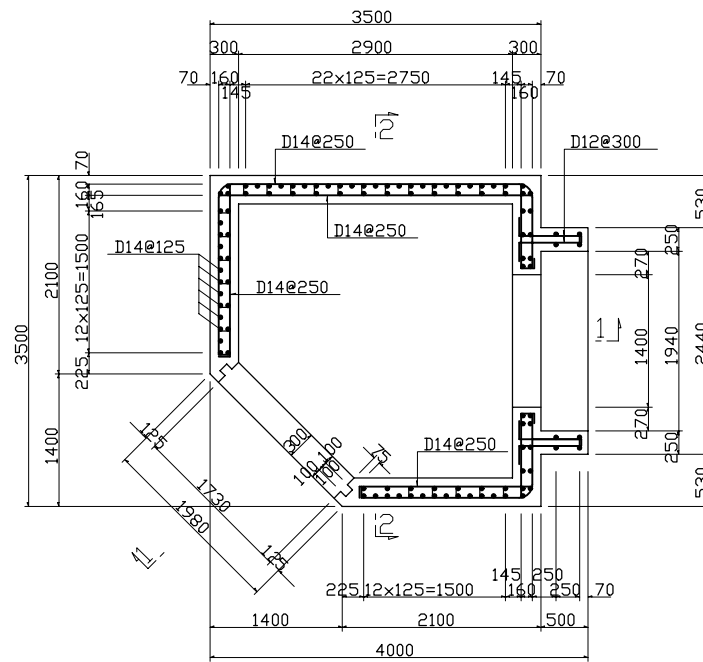


BAR ARRANGEMENT S=1:40

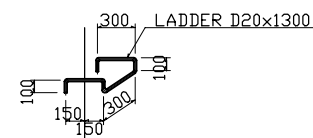
1 - 1



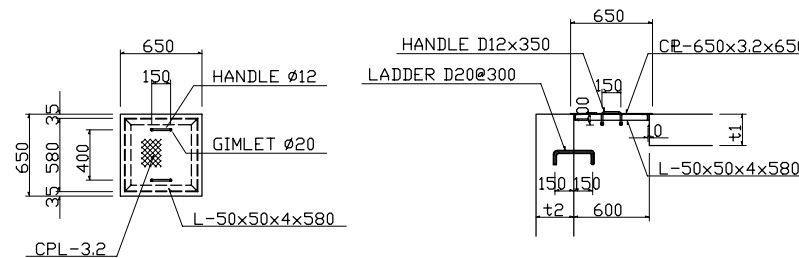
3 - 3



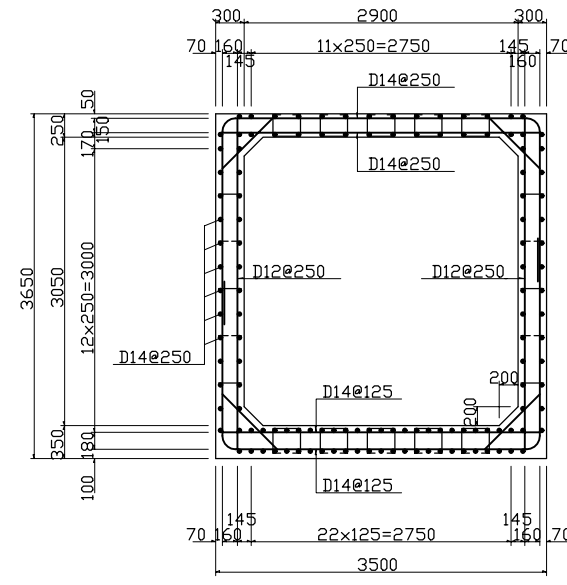
DETAIL OF LADDER S=1:30



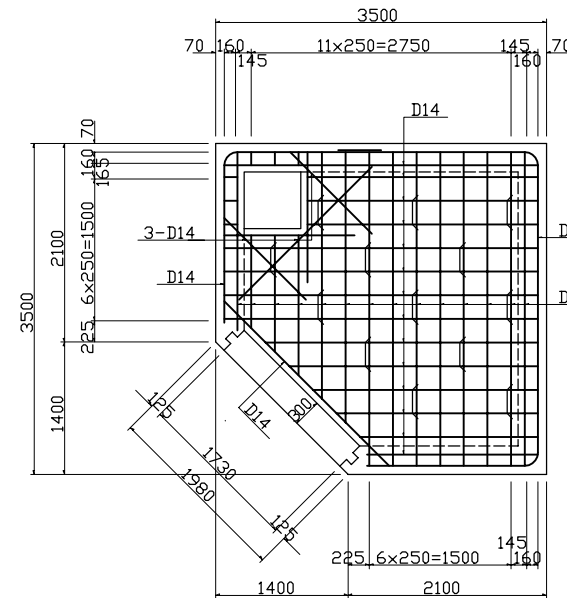
COVER OF MANHOLE S=1:30



2 - 2

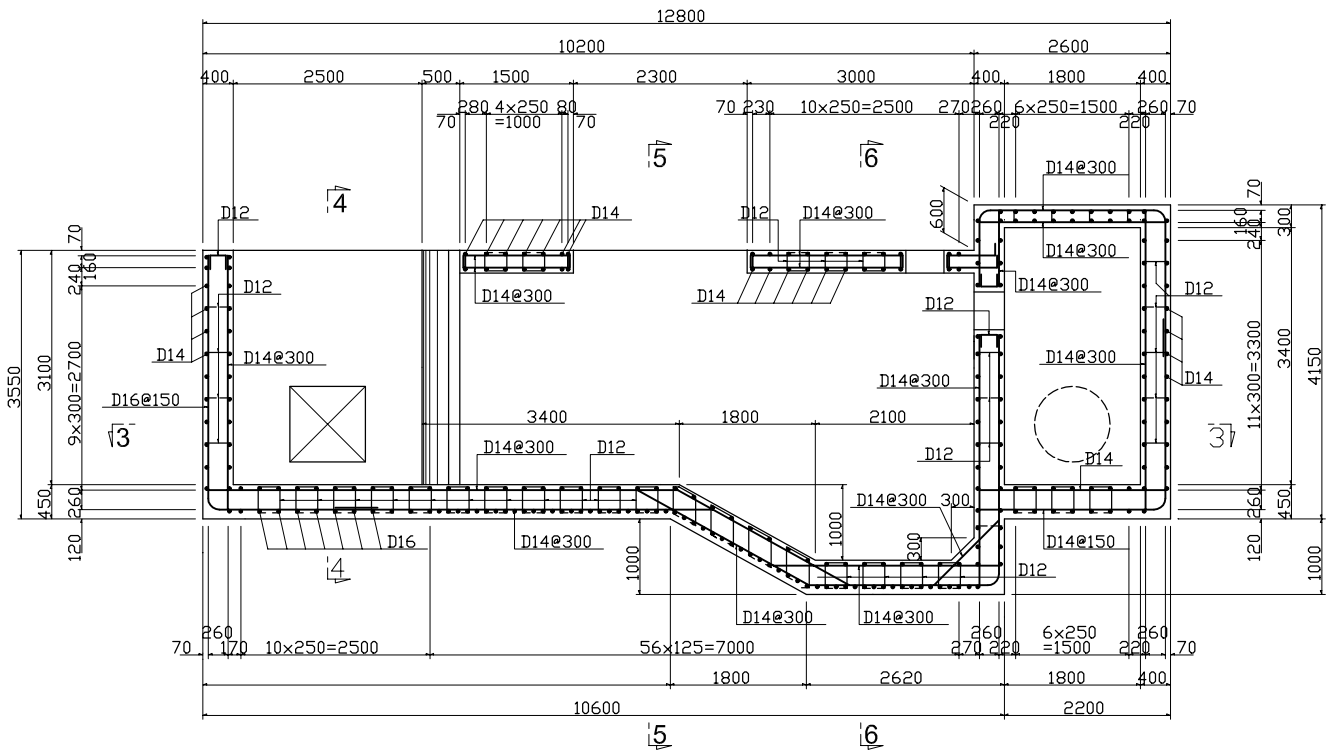


4 - 4

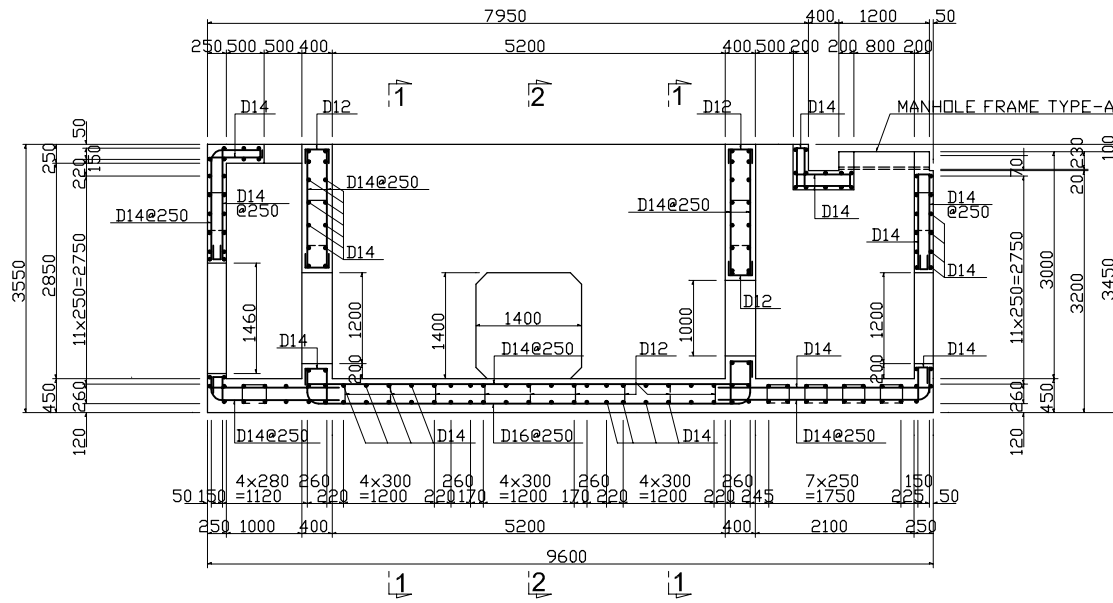


NO.	DATE	DESCRIPTIONS	BY	APRO.
REVISIONS				
PROJECT MANAGEMENT UNIT FOR HO CHI MINH CITY WATER ENVIRONMENT IMPROVEMENT				
THE DETAILED DESIGN STUDY ON HO CHI MINH CITY WATER ENVIRONMENT IMPROVEMENT PROJECT IN THE SOCIALIST REPUBLIC OF VIET NAM				
PACKAGE B PUMP DRAINAGE IMPROVEMENT THANH DA PUMPING STATION				
PLAN, SECTION AND BAR ARRANGEMENT OF INLET PIT AND BOX CULVERT				
SCALE = AS SHOWN				
JAPAN INTERNATIONAL COOPERATION AGENCY (JICA)				
PACIFIC CONSULTANTS INTERNATIONAL				
DESIGNED		CHECKED		
DATE :		DWG. No. PB - PDI - TD - 225		

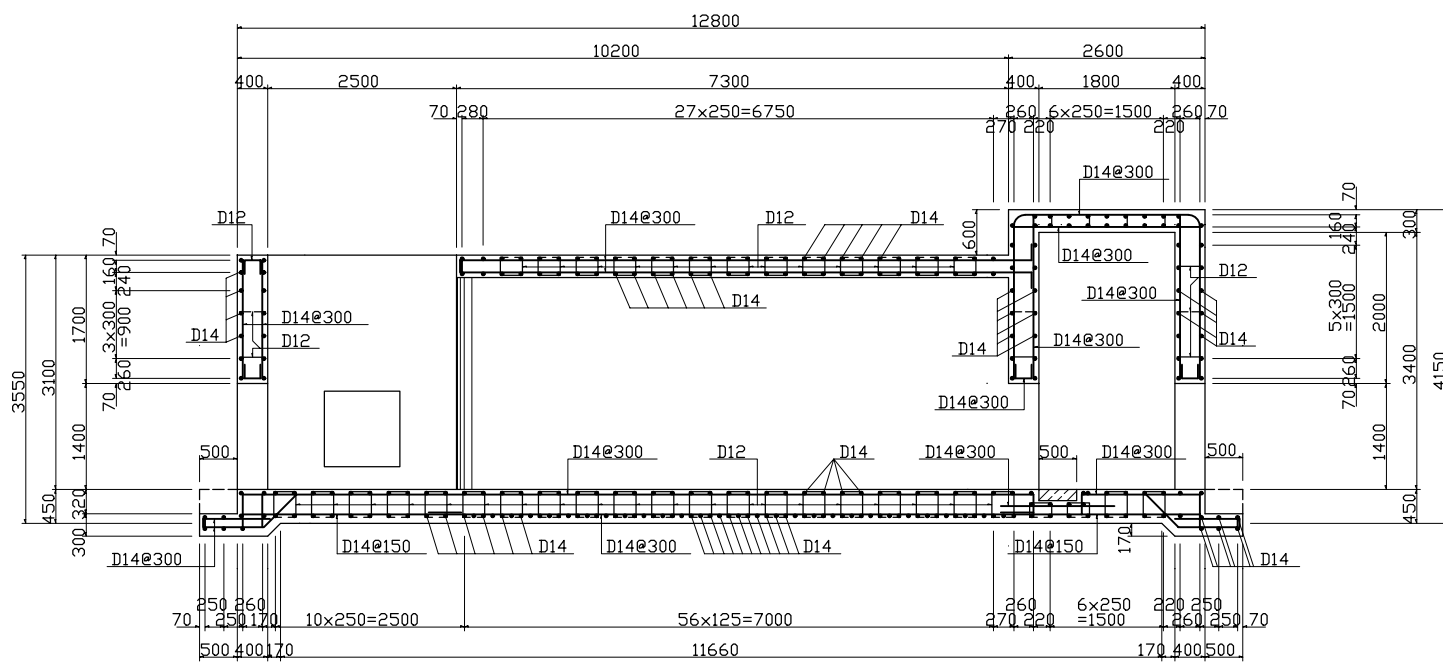
1 - 1





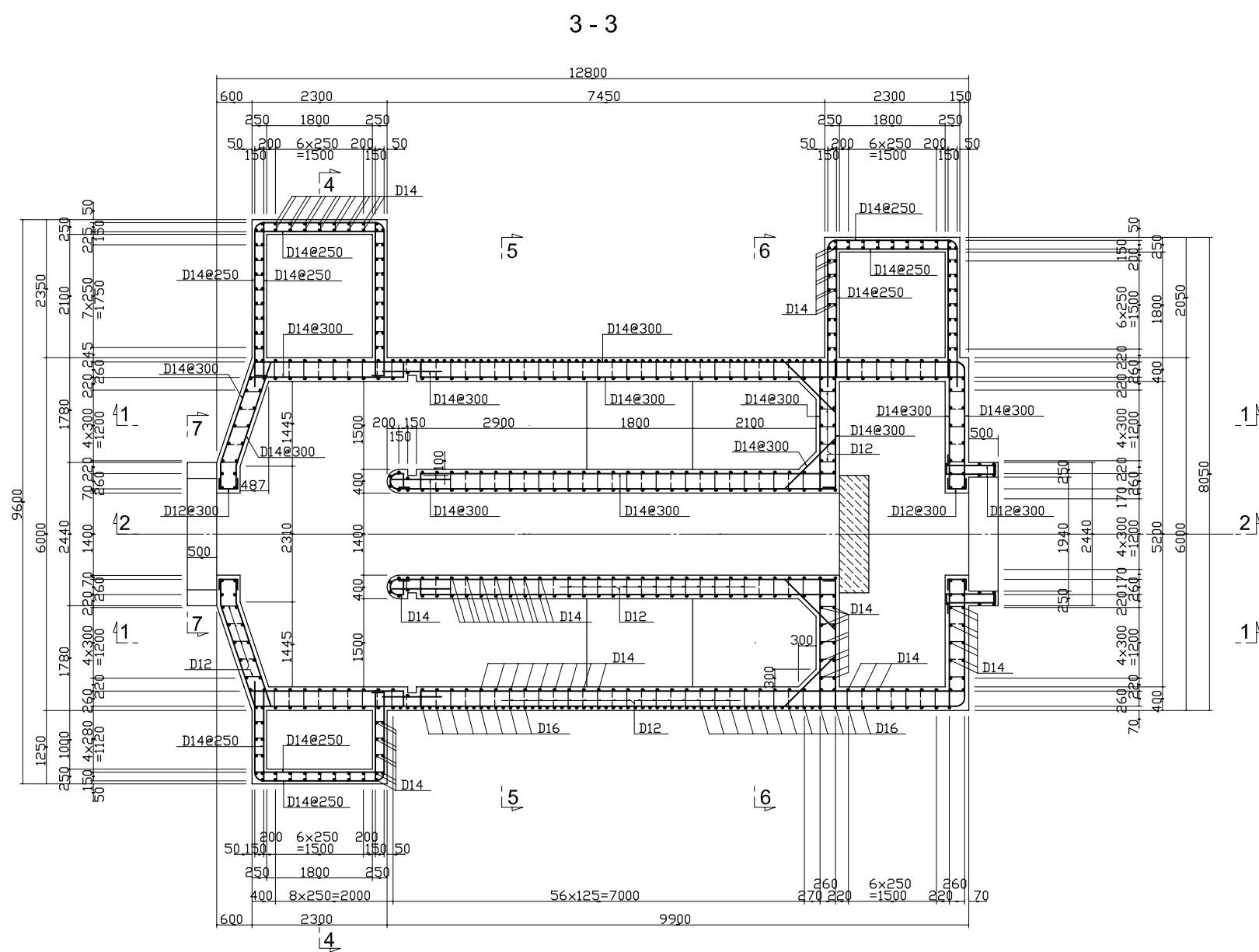
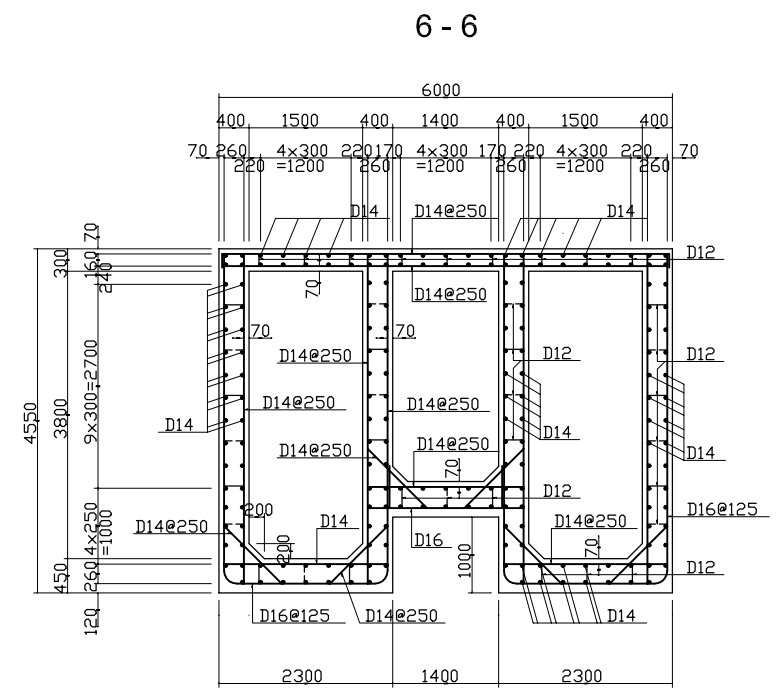
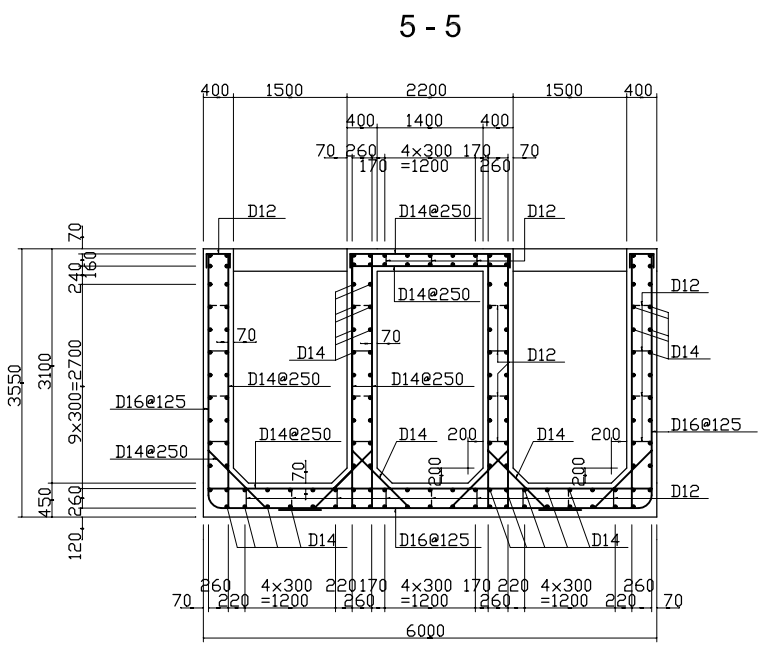
4 - 4





2 - 2



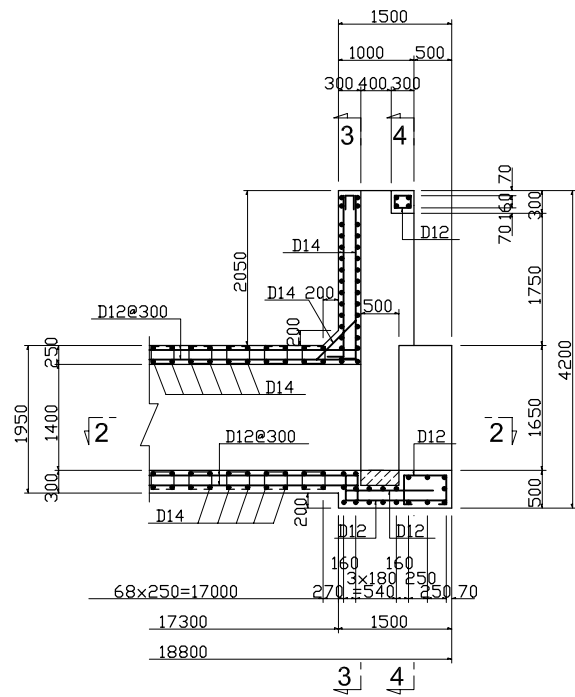
NO.	DATE	DESCRIPTIONS	BY	APRO.
REVISIONS				
PROJECT MANAGEMENT UNIT FOR HO CHI MINH CITY WATER ENVIRONMENT IMPROVEMENT				
THE DETAILED DESIGN STUDY ON HO CHI MINH CITY WATER ENVIRONMENT IMPROVEMENT PROJECT IN THE SOCIALIST REPUBLIC OF VIET NAM				
PACKAGE B PUMP DRAINAGE IMPROVEMENT THANH DA PUMPING STATION BAR ARRANGEMENT OF INLET, PUMPIT AND DISCHARGE BASIN (1/2)				
SCALE = 1 / 50				
 JAPAN INTERNATIONAL COOPERATION AGENCY (JICA)				
 PACIFIC CONSULTANTS INTERNATIONAL				
DESIGNED		CHECKED		
DATE :		DWG. No. PB - TDI - TD - 226		



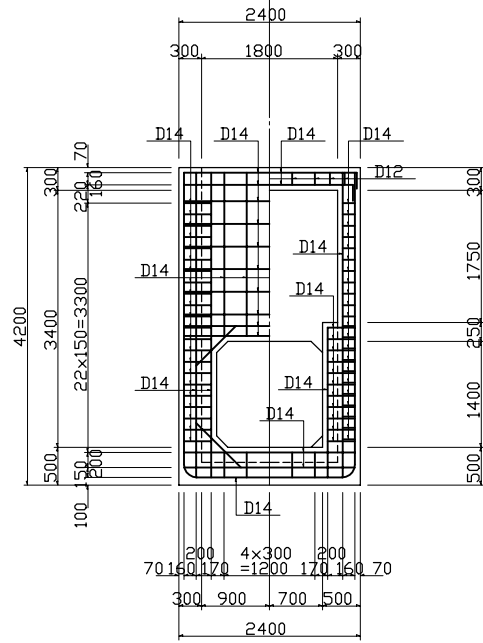
NO.	DATE	DESCRIPTIONS	BY	APRO.
REVISIONS				
PROJECT MANAGEMENT UNIT FOR HO CHI MINH CITY WATER ENVIRONMENT IMPROVEMENT				
THE DETAILED DESIGN STUDY ON HO CHI MINH CITY WATER ENVIRONMENT IMPROVEMENT PROJECT IN THE SOCIALIST REPUBLIC OF VIET NAM				
PACKAGE B PUMP DRAINAGE IMPROVEMENT THANH DA PUMPING STATION BAR ARRANGEMENT OF INLET, PUMP PIT AND DISCHARGE BASIN (2/2)				
SCALE = 1 / 50				
 JAPAN INTERNATIONAL COOPERATION AGENCY (JICA)				
 PACIFIC CONSULTANTS INTERNATIONAL				
DESIGNED			CHECKED	
DATE :		DWG. No. PB - PDI - TD - 227		

SLUICE WAY

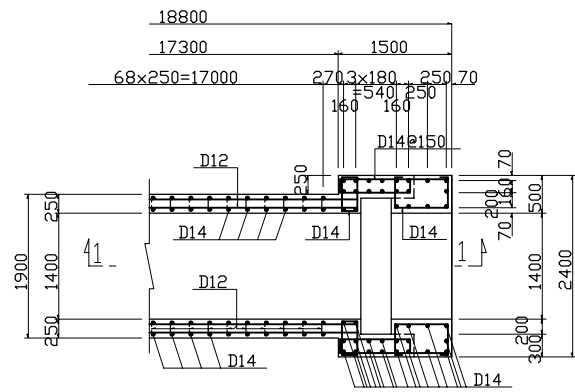
1 - 1



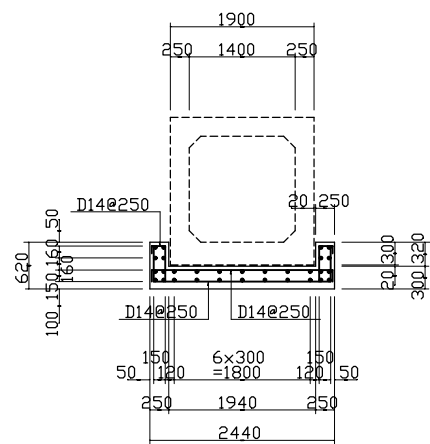
3 - 3 4 - 4



2 - 2

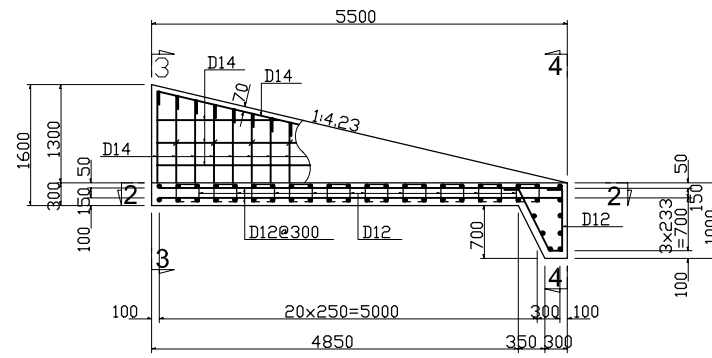


7 - 7

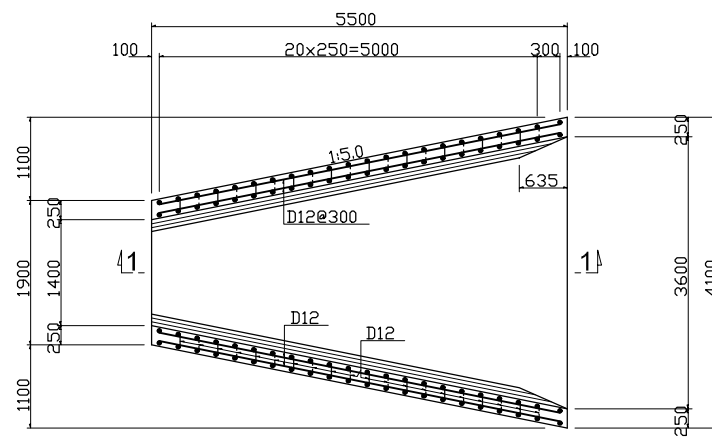


WING WALL

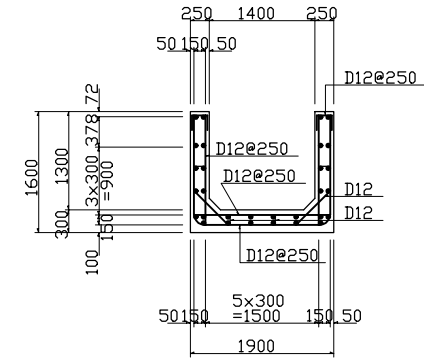
1 - 1



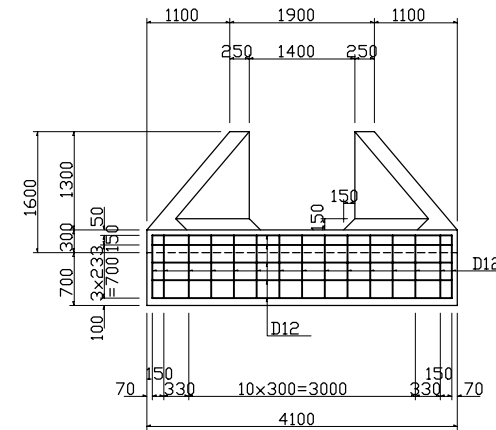
2 - 2



3 - 3

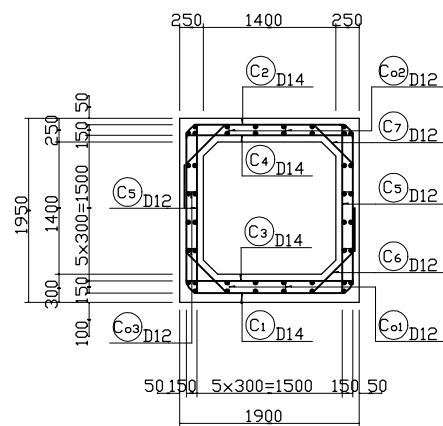


4 - 4

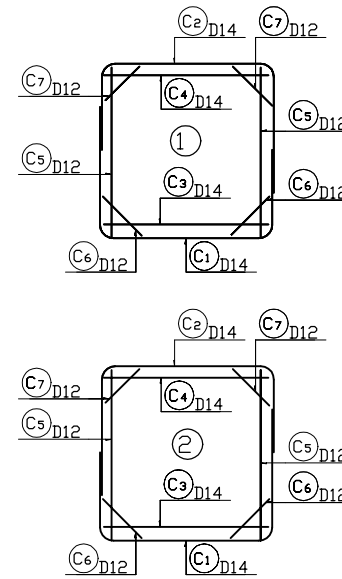


SLUICE WAY S=1:40

CROSS SECTION

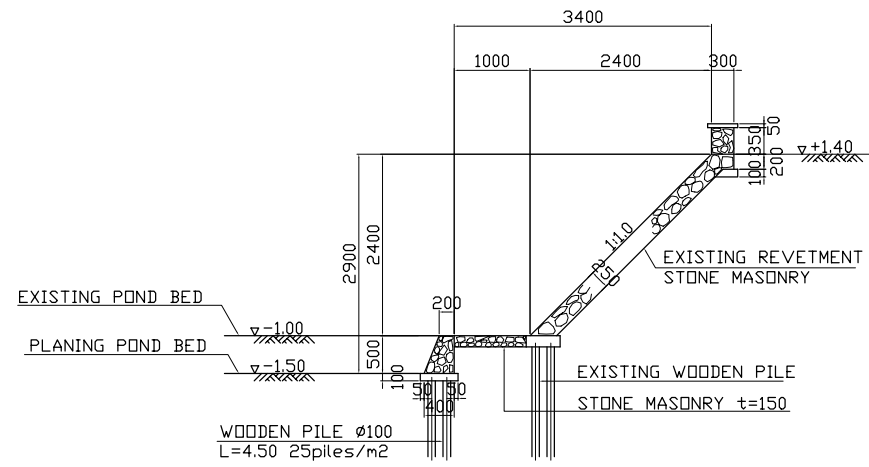


BAR SKELETON @250

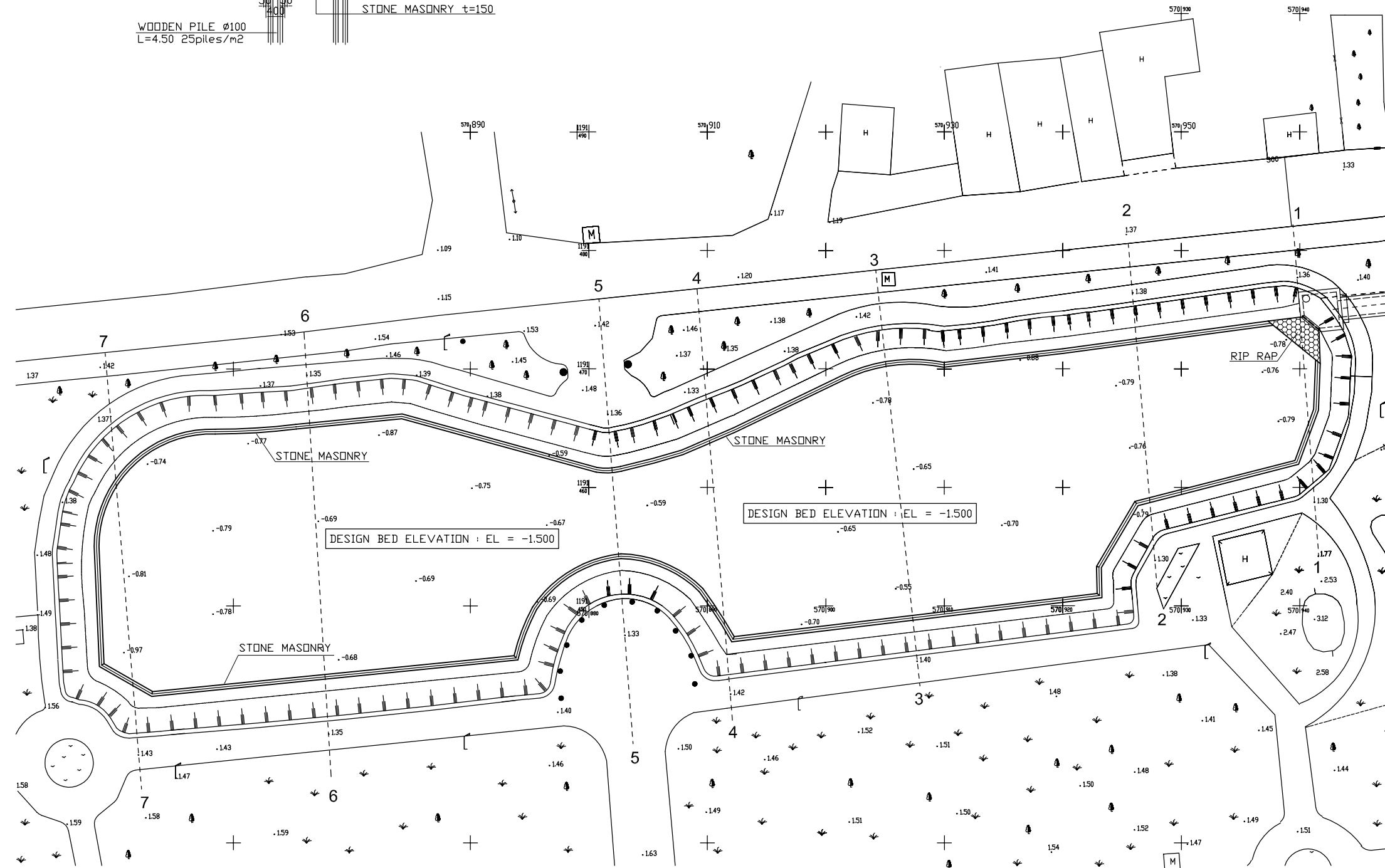
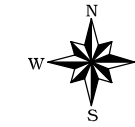


NO.	DATE	DESCRIPTIONS	BY	APRO.
REVISIONS				
PROJECT MANAGEMENT UNIT FOR HO CHI MINH CITY WATER ENVIRONMENT IMPROVEMENT				
THE DETAILED DESIGN STUDY ON HO CHI MINH CITY WATER ENVIRONMENT IMPROVEMENT PROJECT IN THE SOCIALIST REPUBLIC OF VIET NAM				
PACKAGE B PUMP DRAINAGE IMPROVEMENT THANH DA PUMPING STATION BAR ARRANGEMENT OF SLUICE WAY				
SCALE = AS SHOWN				
JAPAN INTERNATIONAL COOPERATION AGENCY (JICA)				
PACIFIC CONSULTANTS INTERNATIONAL				
DESIGNED		CHECKED		
DATE :		DWG. No. PB - PDI - TD - 228		

TYPICAL SECTION OF REVETMENT S = 1 : 50



PLAN S = 1 : 200



NO.	DATE	DESCRIPTIONS	BY	APRO.

REVISIONS

PROJECT MANAGEMENT UNIT FOR
HO CHI MINH CITY
WATER ENVIRONMENT IMPROVEMENT

THE DETAILED DESIGN STUDY ON HO CHI MINH CITY
WATER ENVIRONMENT IMPROVEMENT PROJECT
IN THE SOCIALIST REPUBLIC OF VIET NAM

PACKAGE B
PUMP DRAINAGE IMPROVEMENT
THANH DA RETARDING POND

LAYOUT OF THANH DA RETARDING POND
AND TYPICAL SECTION OF REVETMENT

SCALE = AS SHOWN

JICA JAPAN INTERNATIONAL COOPERATION
AGENCY (JICA)

PACIFIC CONSULTANTS INTERNATIONAL

DESIGNED _____ CHECKED _____

DATE : _____ DWG. No. PB - PDI - TD - 229

