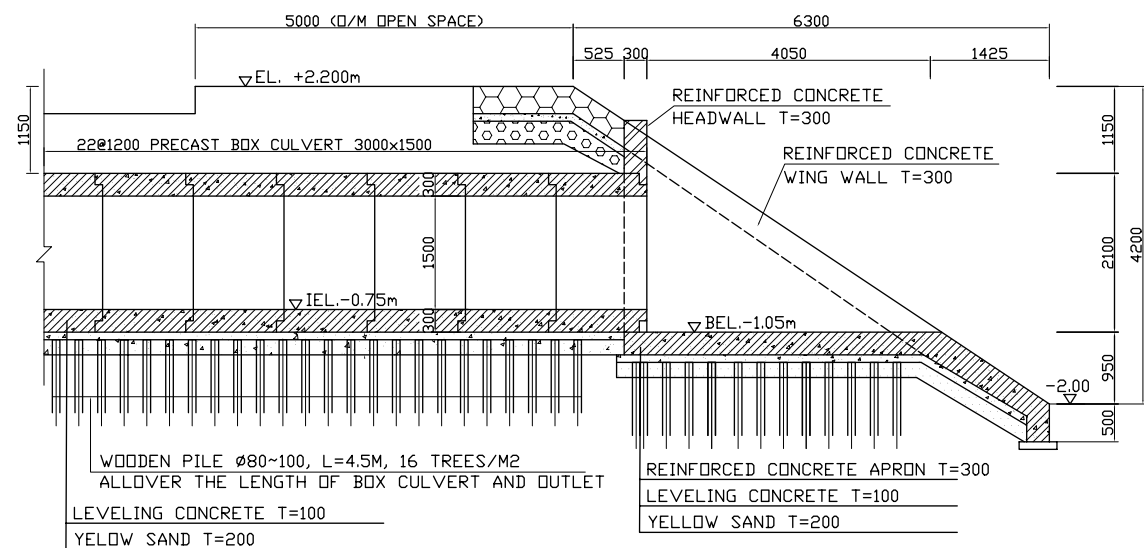
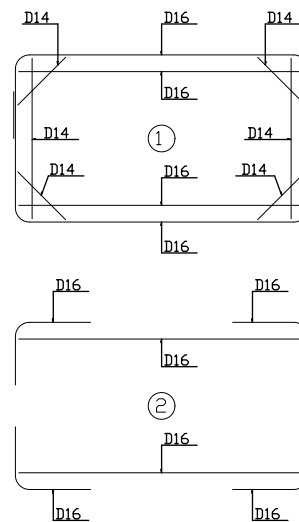
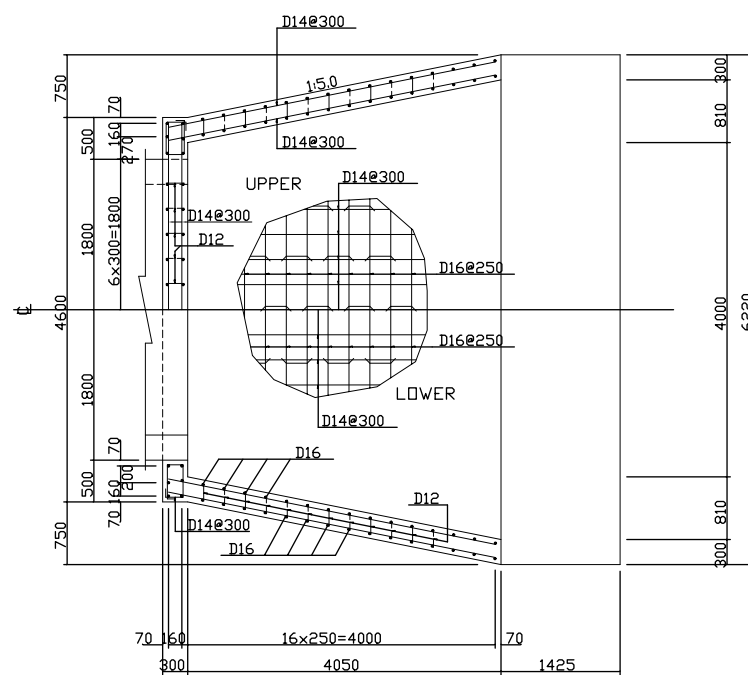


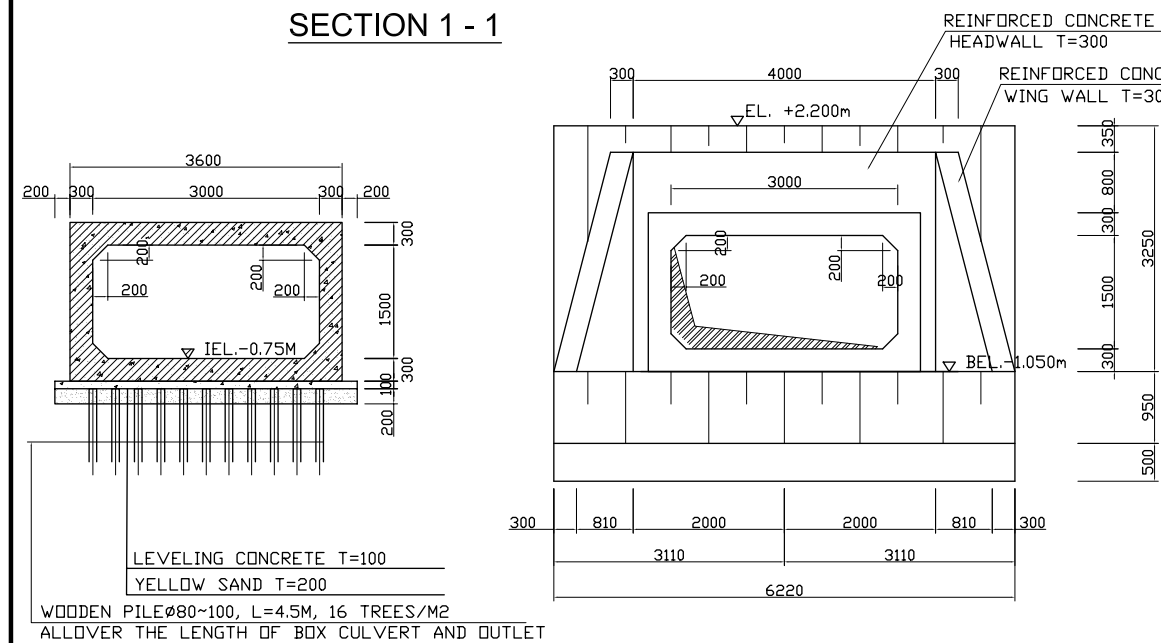
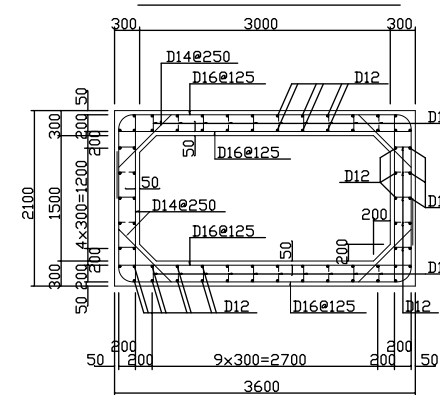
BAR SKERETON @125



SECTION C-C



BOX CULVERT CROSS SECTION



NO.	DATE	DESCRIPTIONS	BY	APRO.

REVISIONS

PROJECT MANAGEMENT UNIT FOR
HO CHI MINH CITY
WATER ENVIRONMENT IMPROVEMENT

THE DETAILED DESIGN STUDY ON HO CHI MINH CITY
WATER ENVIRONMENT IMPROVEMENT PROJECT
IN THE SOCIALIST REPUBLIC OF VIET NAM

PACKAGE A
TAU HU - BEN NGHE CANAL IMPROVEMENT
OUTLET OF SEWER
BN - R9

SCALE 1:50

JICA JAPAN INTERNATIONAL COOPERATION
AGENCY (JICA)

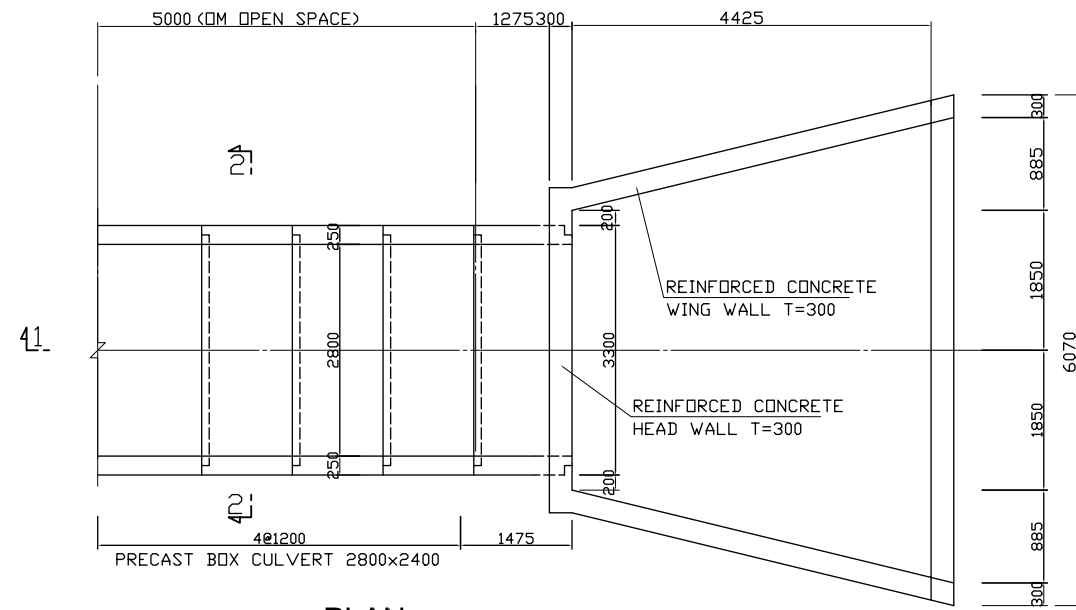
PACIFIC CONSULTANTS INTERNATIONAL

DESIGNED TOKUMASU TOSHIAKI	CHECKED KONDO MASAMI
-------------------------------	-------------------------

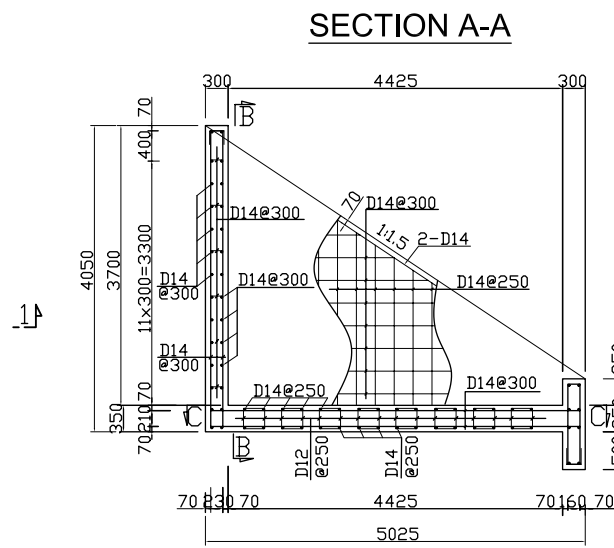
DATE : JUNE 2001 DWG. No. PA - THBNCI - 249

SECTION 2-2

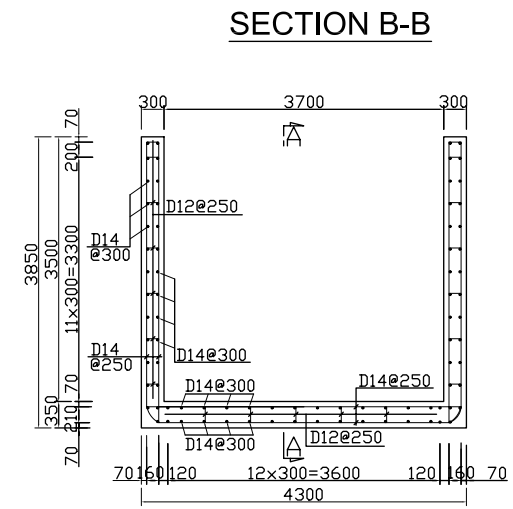
FRONT OF VIEW



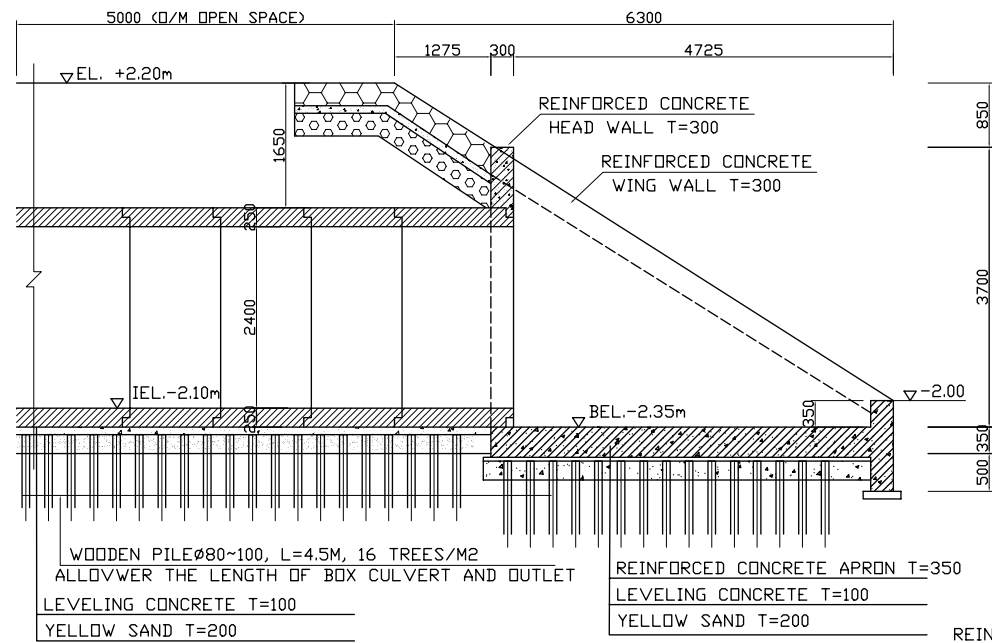
PLAN



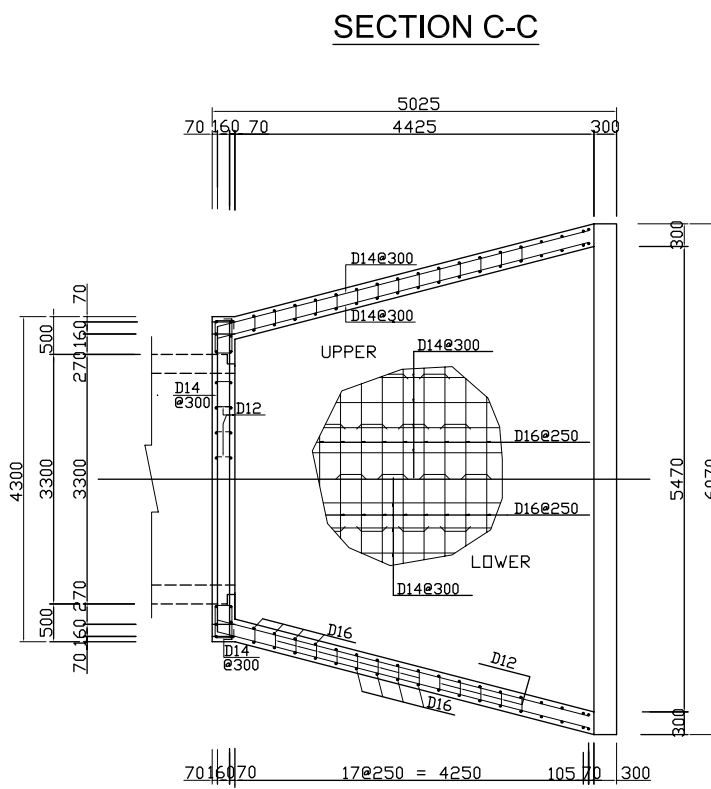
SECTION A-A



SECTION B-B



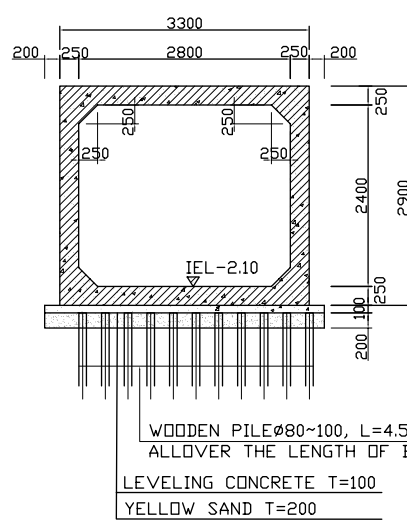
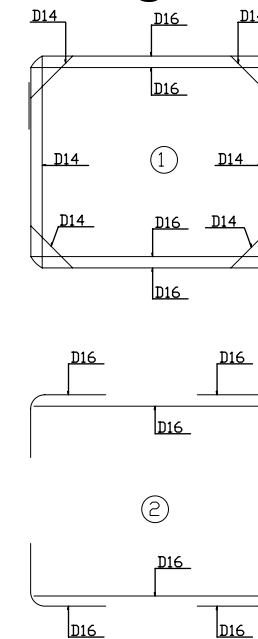
SECTION 1-1



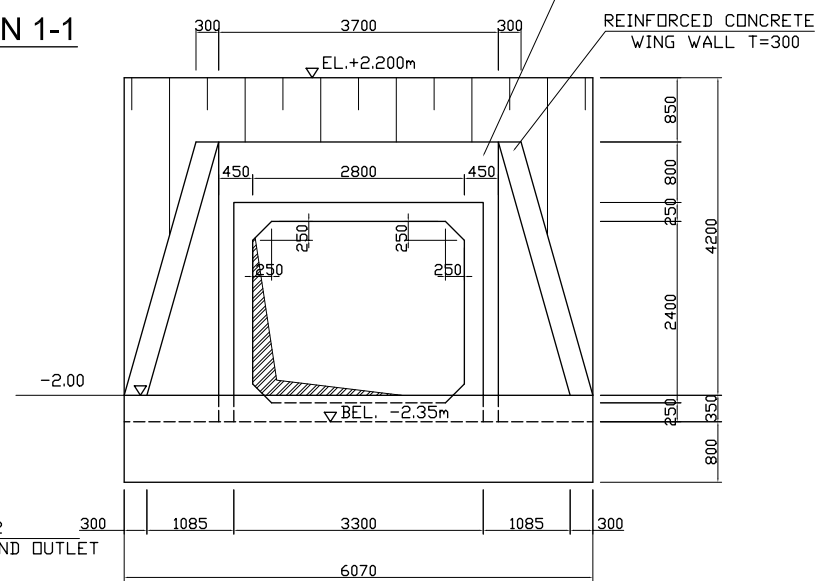
SECTION C-C

BAR SKERETON

@125

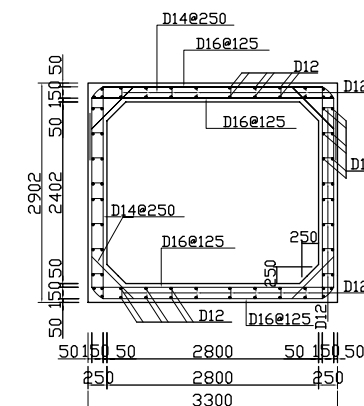


SECTION 2-2



FRONT OF VIEW

BOX CULVERT CROSS SECTION



NO.	DATE	DESCRIPTIONS	BY	APRO.

REVISIONS

PROJECT MANAGEMENT UNIT FOR
HO CHI MINH CITY
WATER ENVIRONMENT IMPROVEMENT

THE DETAILED DESIGN STUDY ON HO CHI MINH CITY
WATER ENVIRONMENT IMPROVEMENT PROJECT
IN THE SOCIALIST REPUBLIC OF VIET NAM

PACKAGE A
TAU HU - BEN NGHE CANAL IMPROVEMENT
OUTLET OF SEWER
TH-L10

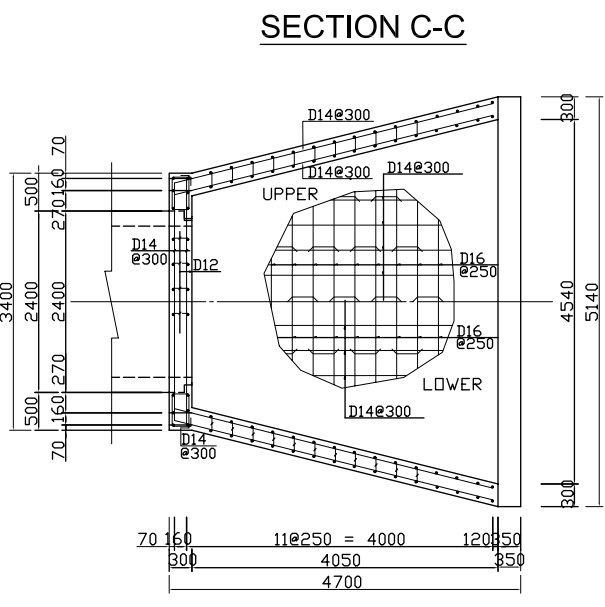
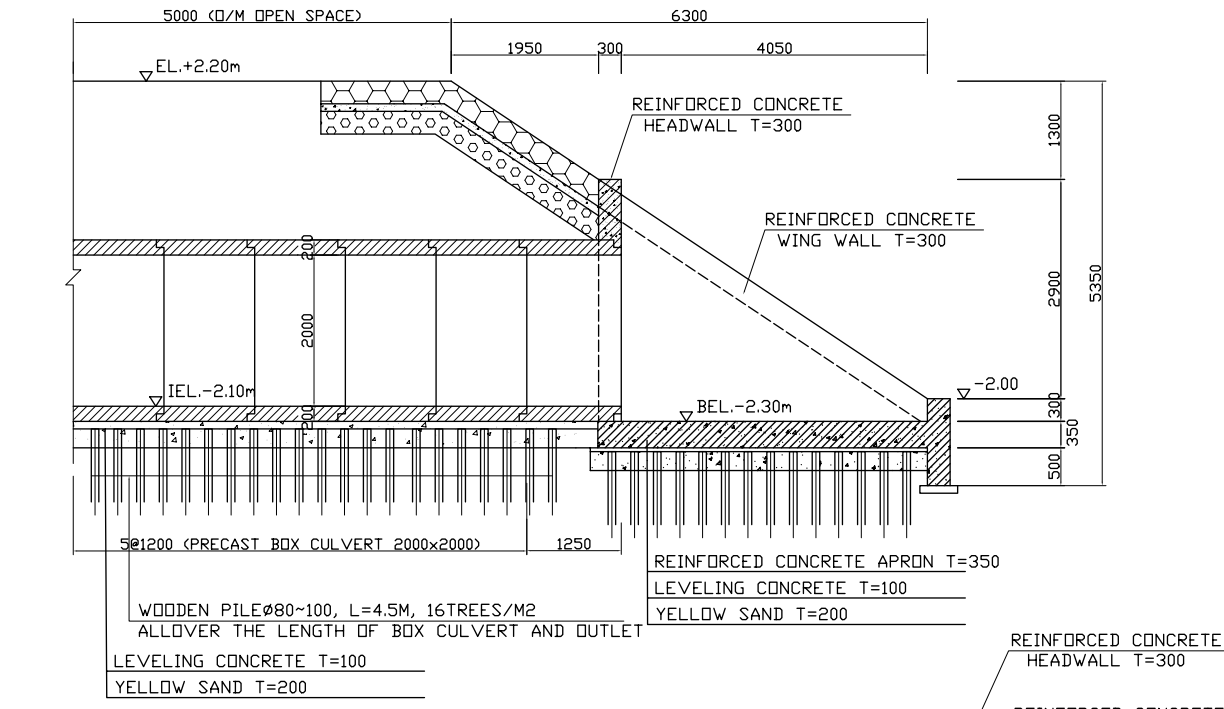
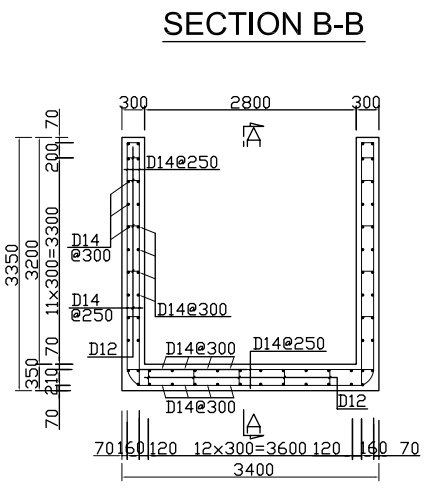
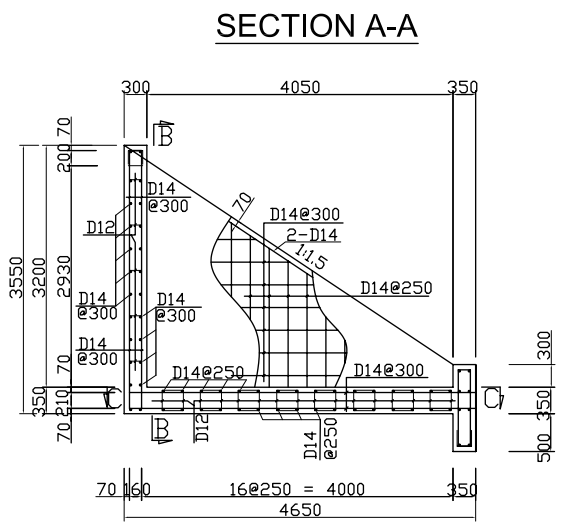
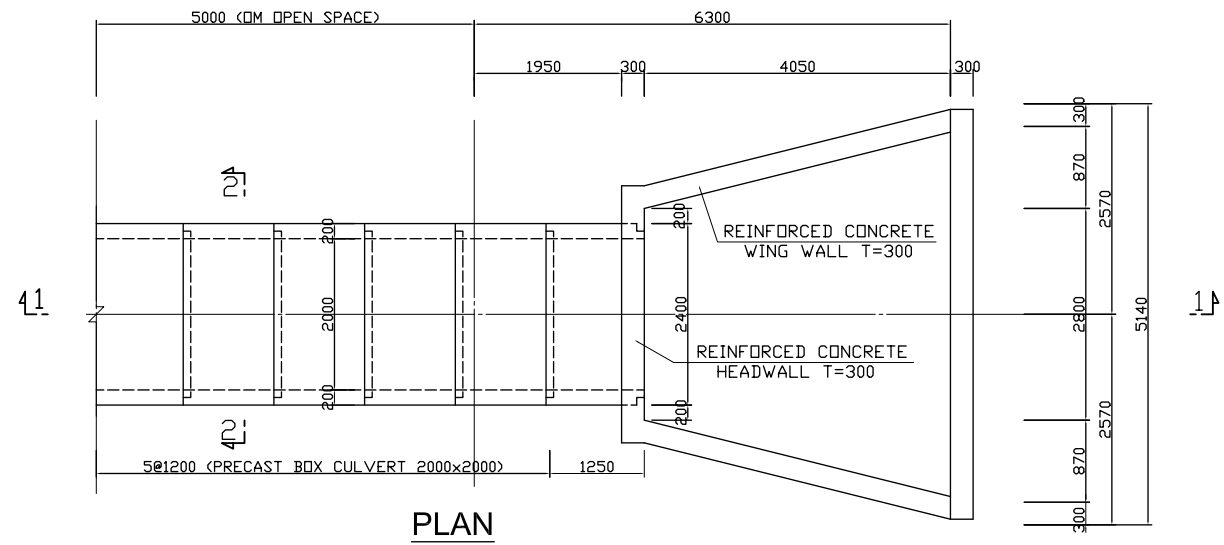
SCALE 1:50

JICA JAPAN INTERNATIONAL COOPERATION
AGENCY (JICA)

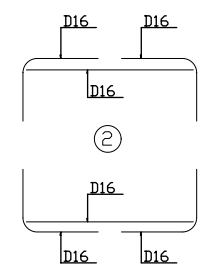
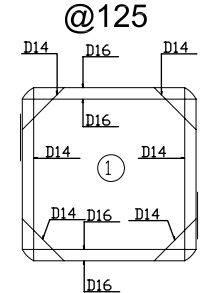
PACIFIC CONSULTANTS INTERNATIONAL

DESIGNED TOKUMASU TOSHIAKI CHECKED KONDO MASAMI

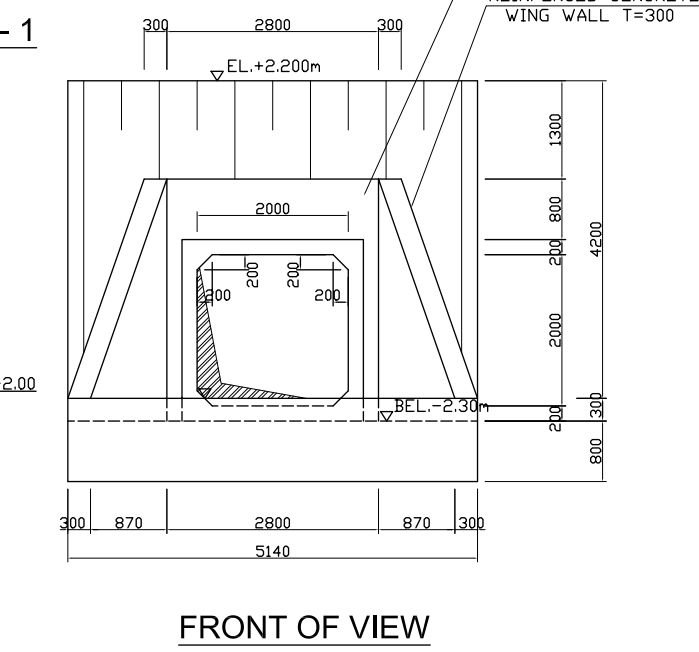
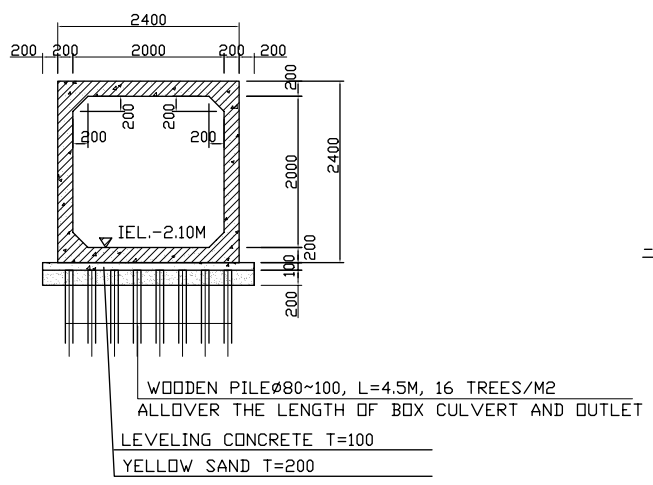
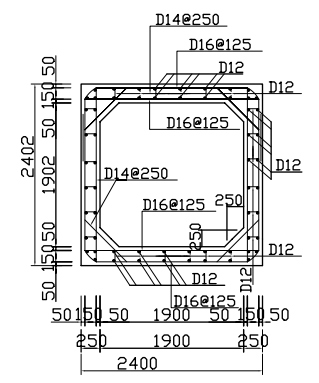
DATE : JUNE 2001 DWG. No. PA - THBNCI - 250



BAR SKERETON



BOX CULVERT CROSS SECTION



LEGEND This Drawing Will Be Applied For Both Out Let BN-L13 and BN-L17

NO.	DATE	DESCRIPTIONS	BY	APRO.

REVISIONS

PROJECT MANAGEMENT UNIT FOR
HO CHI MINH CITY
WATER ENVIRONMENT IMPROVEMENT

THE DETAILED DESIGN STUDY ON HO CHI MINH CITY
WATER ENVIRONMENT IMPROVEMENT PROJECT
IN THE SOCIALIST REPUBLIC OF VIET NAM

PACKAGE A
TAU HU - BEN NGHE CANAL IMPROVEMENT

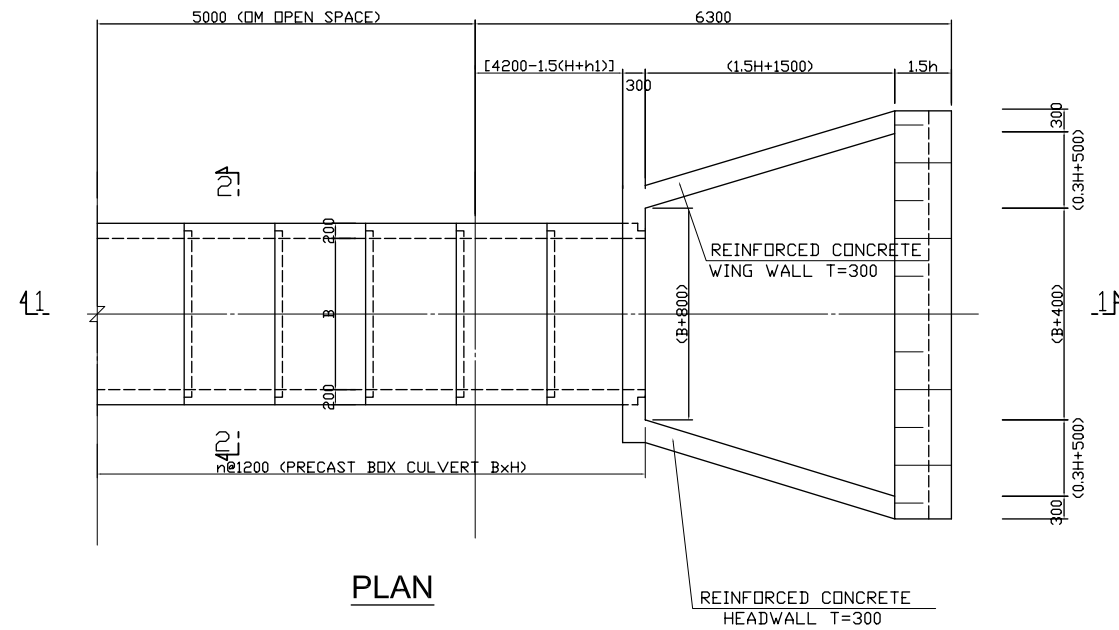
OUTLET OF SEWERS
BN - L13, BN - L17

SCALE 1:50

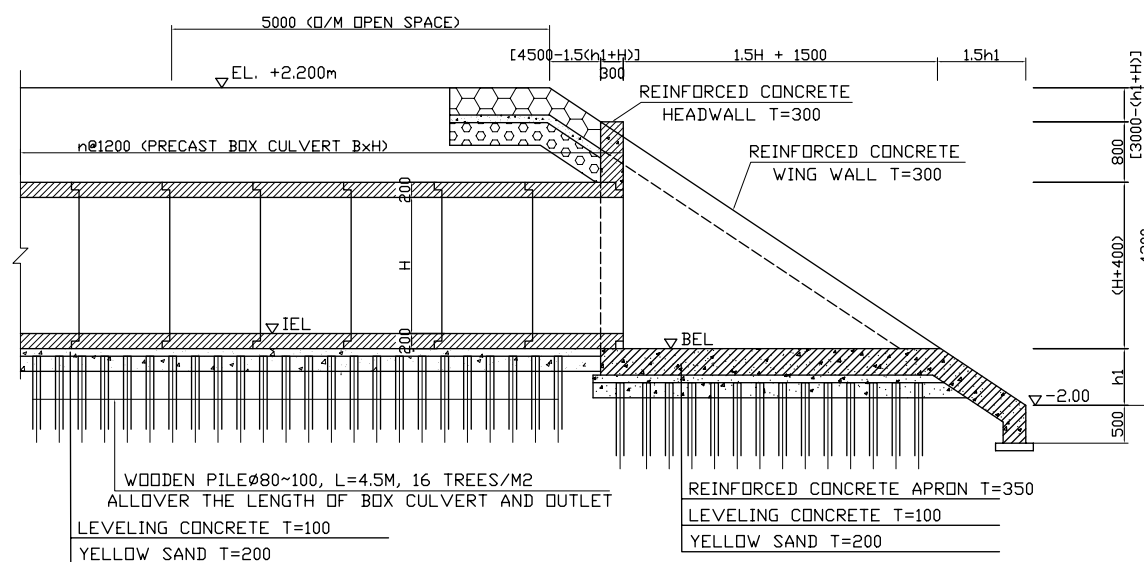
JICA JAPAN INTERNATIONAL COOPERATION AGENCY (JICA)

PACIFIC CONSULTANTS INTERNATIONAL

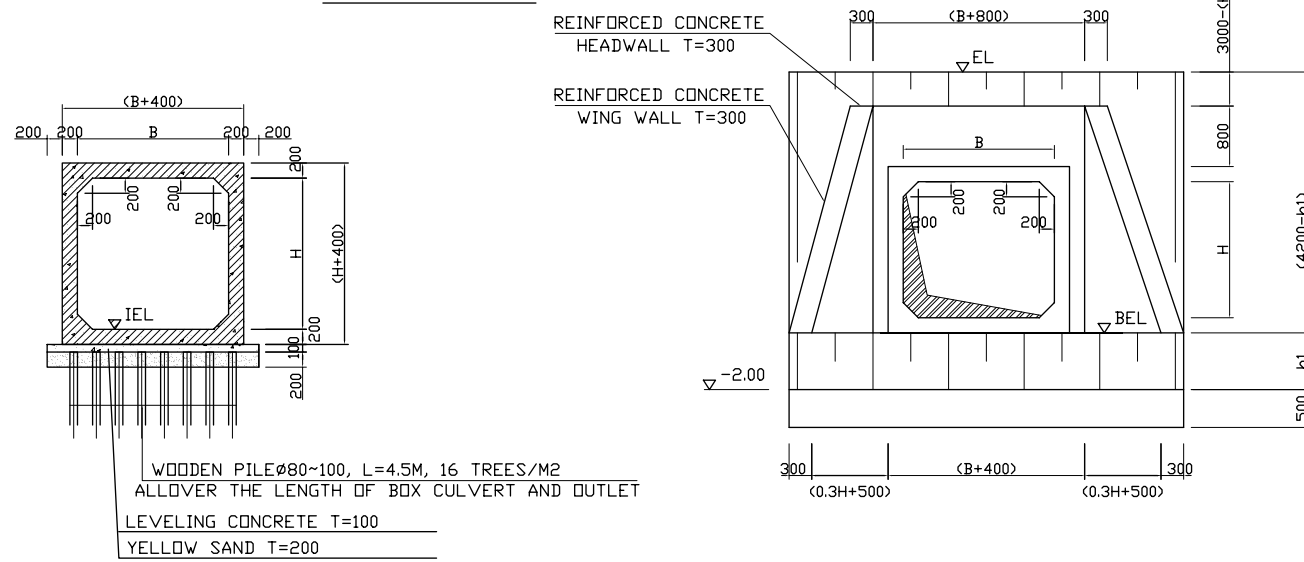
DESIGNED TOKUMASU TOSHIAKI	CHECKED KONDO MASAMI
DATE : JUNE 2001	DWG. No. PA - THBNCI - 251



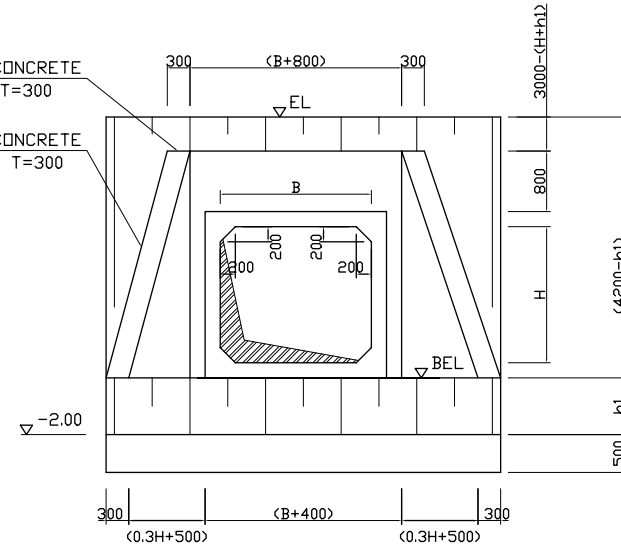
PLAN



SECTION 1 - 1

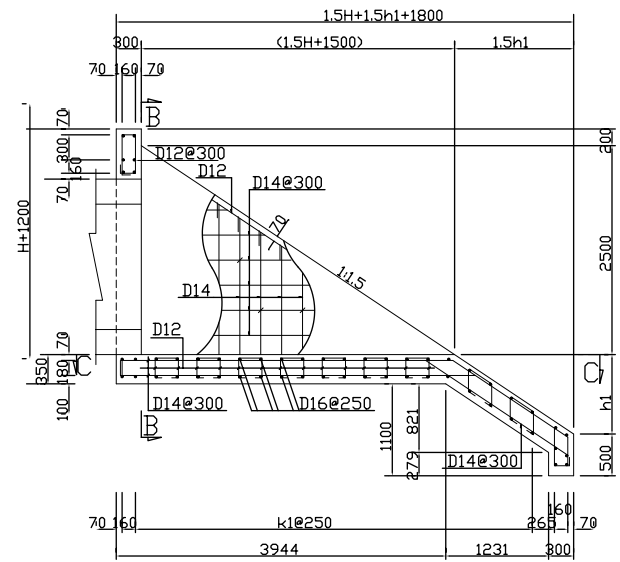


SECTION 2-2

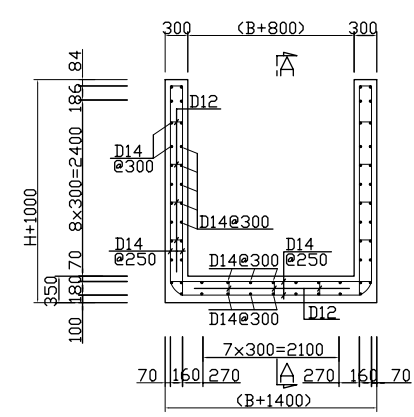


FRONT OF VIEW

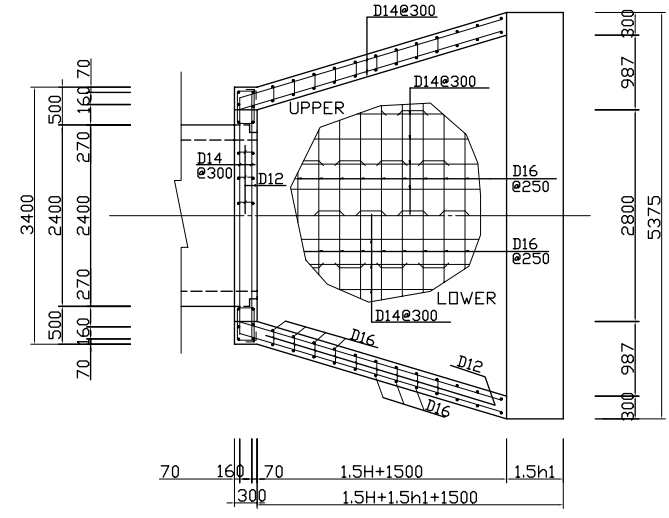
SECTION A-A



SECTION B-B



SECTION C-C



LEGEND

THIS OUTLET STRUCTURE SHALL BE APPLIED FOR OUTLETS BN-L4, BN-L5, BN-L7, TH-L6 THE DIMENSION FOR EACH IS MENTIONED AS BELLOW

DIMENSION TABLE

No. of OUTLET	B	H	h1 (mm)	n	k1	IEL (m)	BEL (m)	Remark
BN - L4	1600	2000	50	5	18	-1.75	-1.95	
BN - L5	1800	2000	750	5	18	-1.05	-1.25	
BN - L7	1500	1500	0	21	15	-1.85	-2.05	
TH - L6	1500	1500	700	5	15	-1.10	-1.30	

NO.	DATE	DESCRIPTIONS	BY	APRO.

REVISIONS

PROJECT MANAGEMENT UNIT FOR HO CHI MINH CITY WATER ENVIRONMENT IMPROVEMENT

THE DETAILED DESIGN STUDY ON HO CHI MINH CITY WATER ENVIRONMENT IMPROVEMENT PROJECT IN THE SOCIALIST REPUBLIC OF VIET NAM

PACKAGE A TAU HU - BEN NGHE CANAL IMPROVEMENT

OUTLET OF SEWER BN-L4, BN-L5, BN-L7, TH-L6

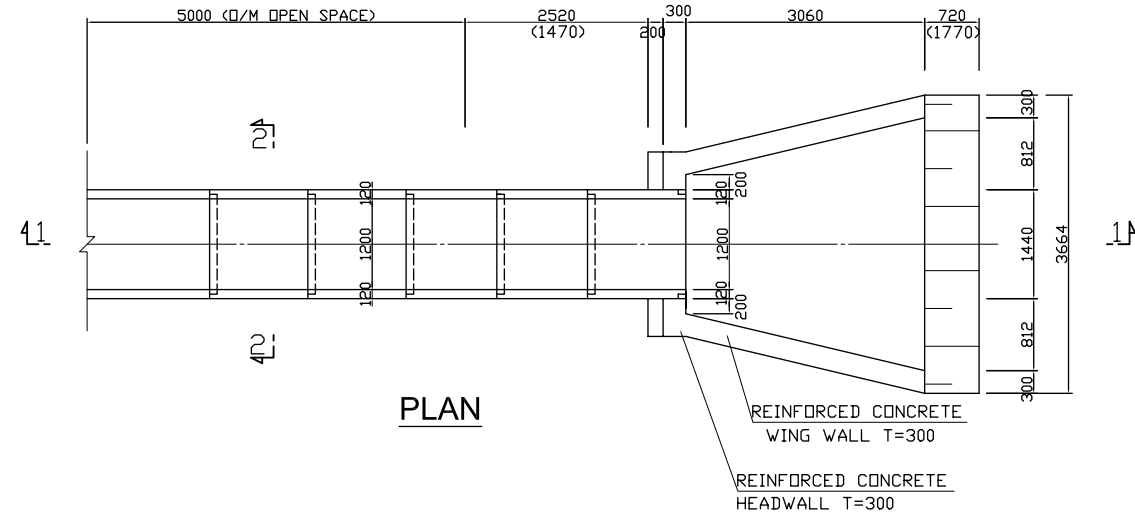
SCALE 1:50

JICA JAPAN INTERNATIONAL COOPERATION AGENCY (JICA)

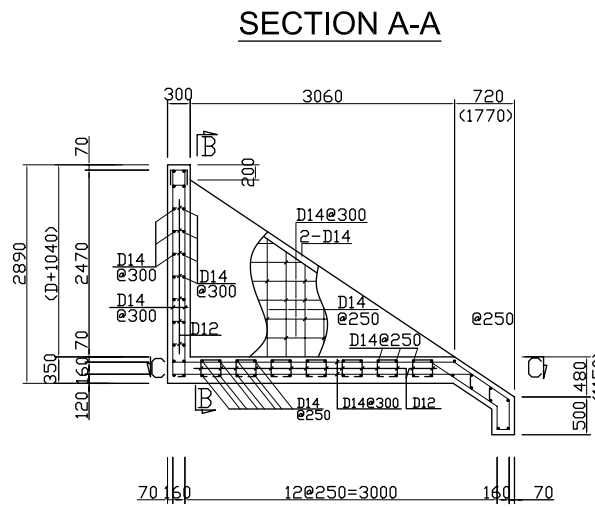
PACIFIC CONSULTANTS INTERNATIONAL

DESIGNED TOKUMASU TOSHIAKI CHECKED KONDO MASAMI

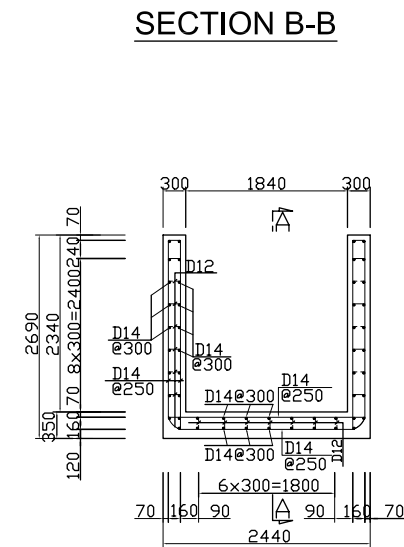
DATE : JUNE 2001 DWG. No. PA - THBNCI - 252



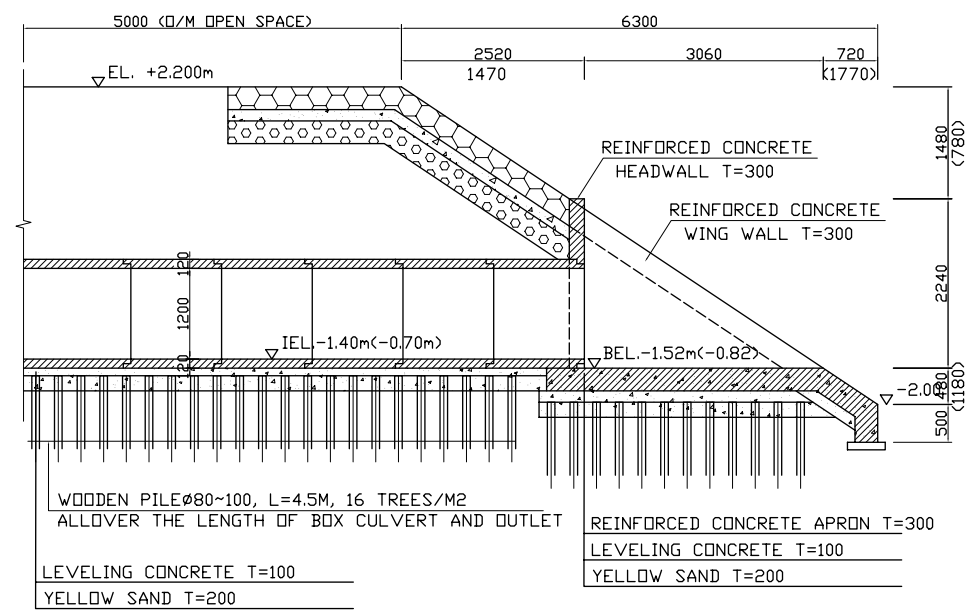
PLAN



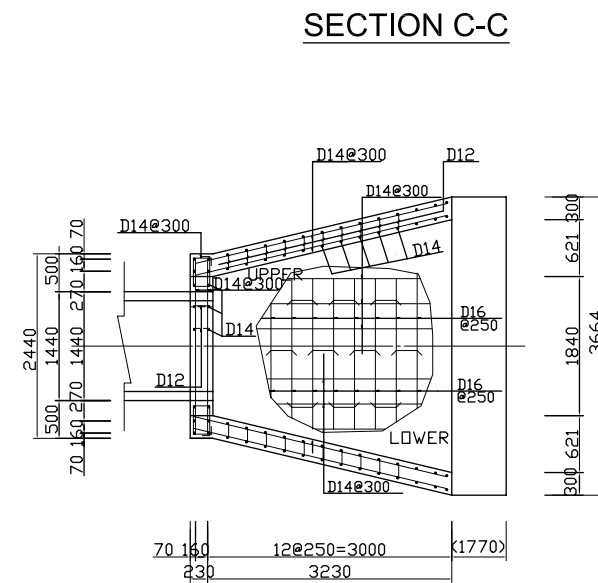
SECTION A-A



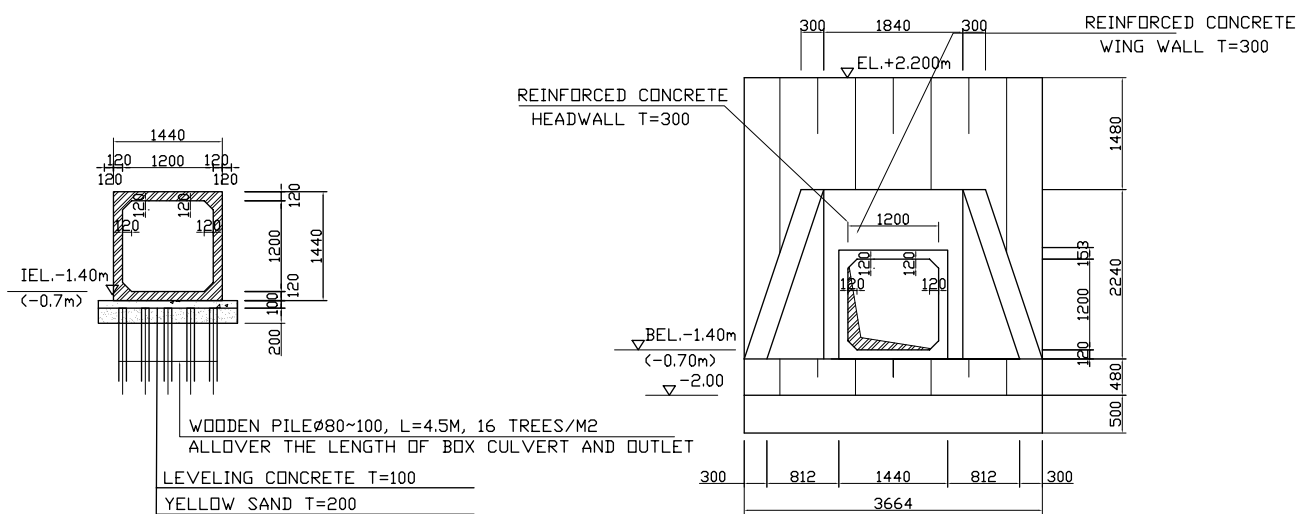
SECTION B-B



SECTION 1 - 1



SECTION C-C



FRONT OF VIEW

SECTION 2-2

LEGEND

THIS STRUCTURE IS DESIGNED FOR BOTH OUTLETS TH - L9, TH - 14
THE VALUE INSIDE THE BRACKETS IS OF TH - L14

NO.	DATE	DESCRIPTIONS	BY	APRO.

REVISIONS

PROJECT MANAGEMENT UNIT FOR
HO CHI MINH CITY
WATER ENVIRONMENT IMPROVEMENT

THE DETAILED DESIGN STUDY ON HO CHI MINH CITY
WATER ENVIRONMENT IMPROVEMENT PROJECT
IN THE SOCIALIST REPUBLIC OF VIET NAM

PACKAGE A
TAU HU - BEN NGHE CANAL IMPROVEMENT
OUTLET OF SEWER
TH-L9, TH-L14

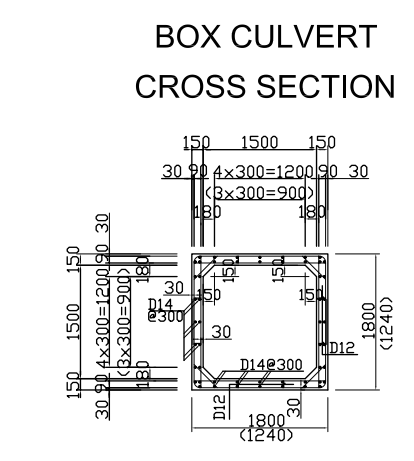
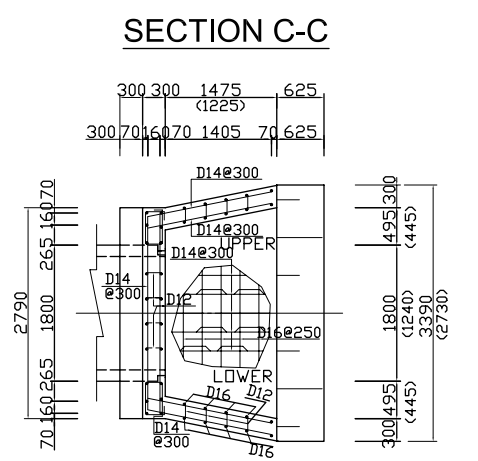
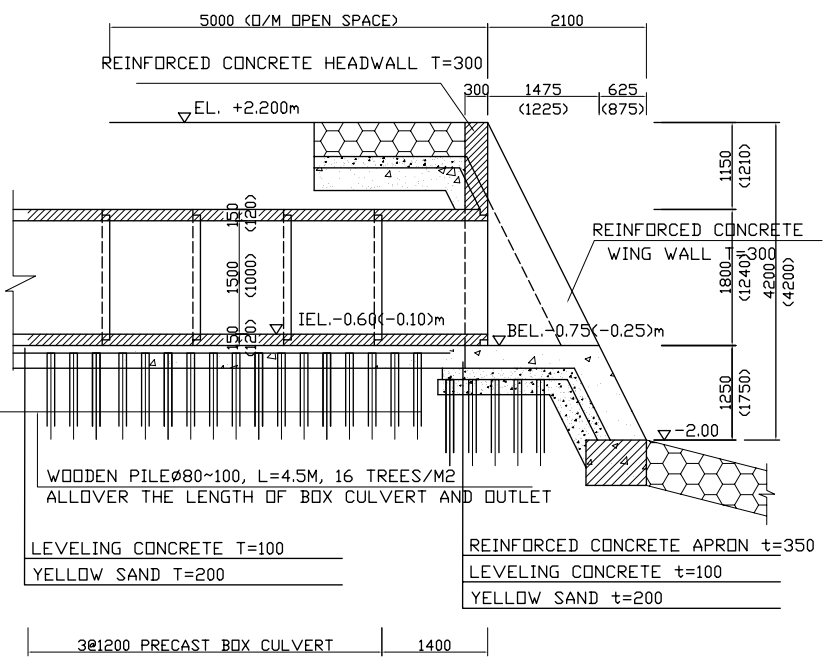
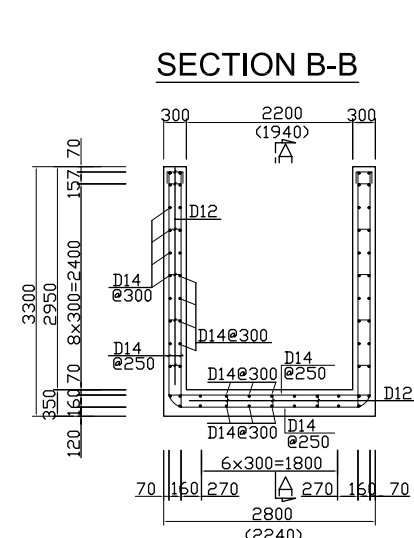
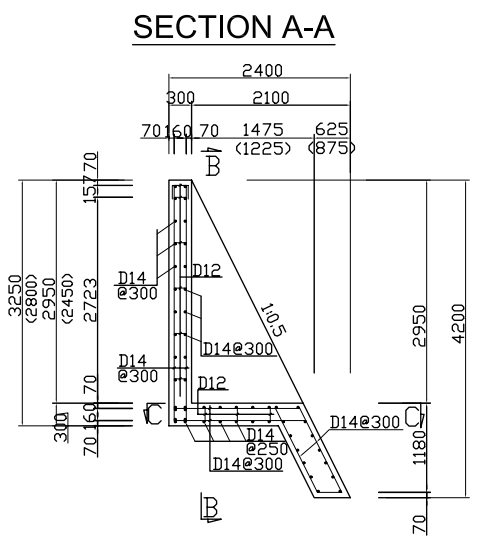
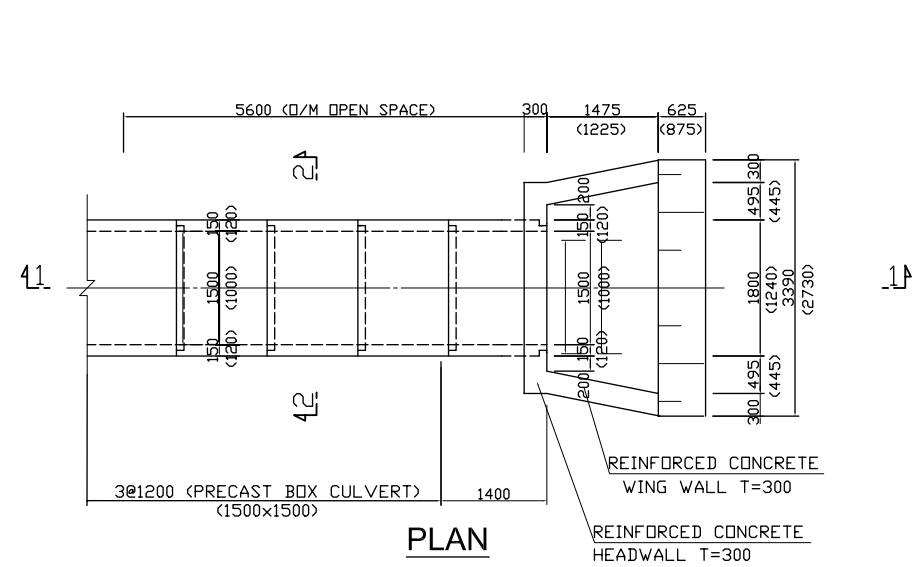
SCALE 1:50

JICA JAPAN INTERNATIONAL COOPERATION
AGENCY (JICA)

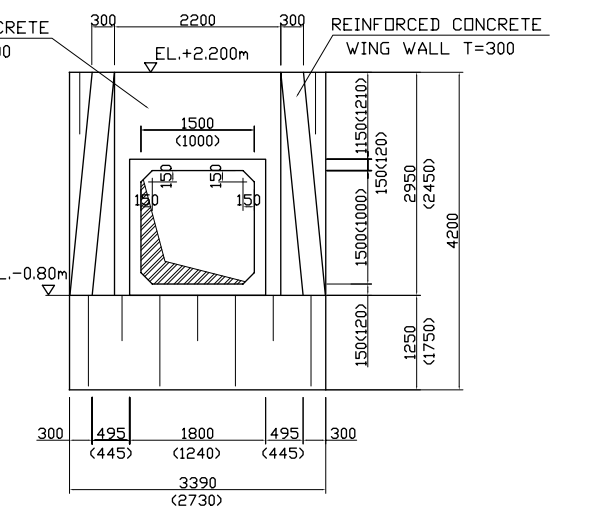
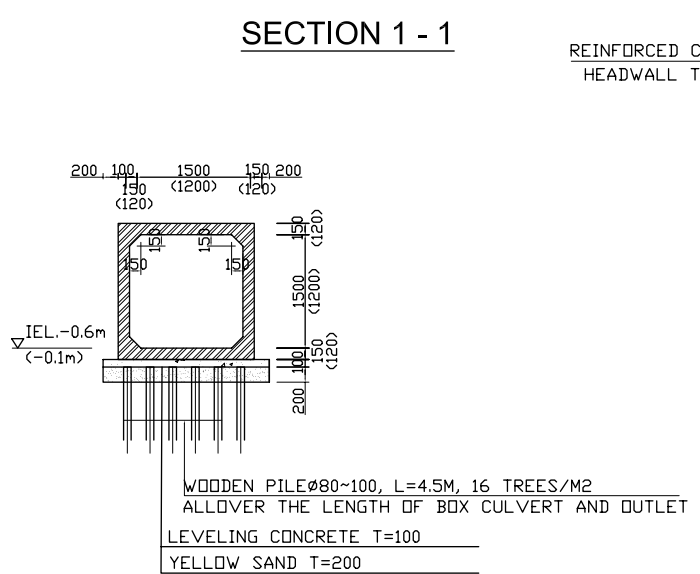
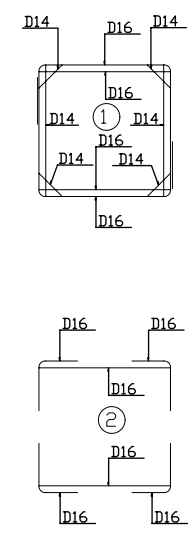
PACIFIC CONSULTANTS INTERNATIONAL

DESIGNED TOKUMASU TOSHIAKI
CHECKED KONDO MASAMI

DATE : JUNE 2001 DWG. No. PA - THBNCI - 253



BAR SKERETON @125

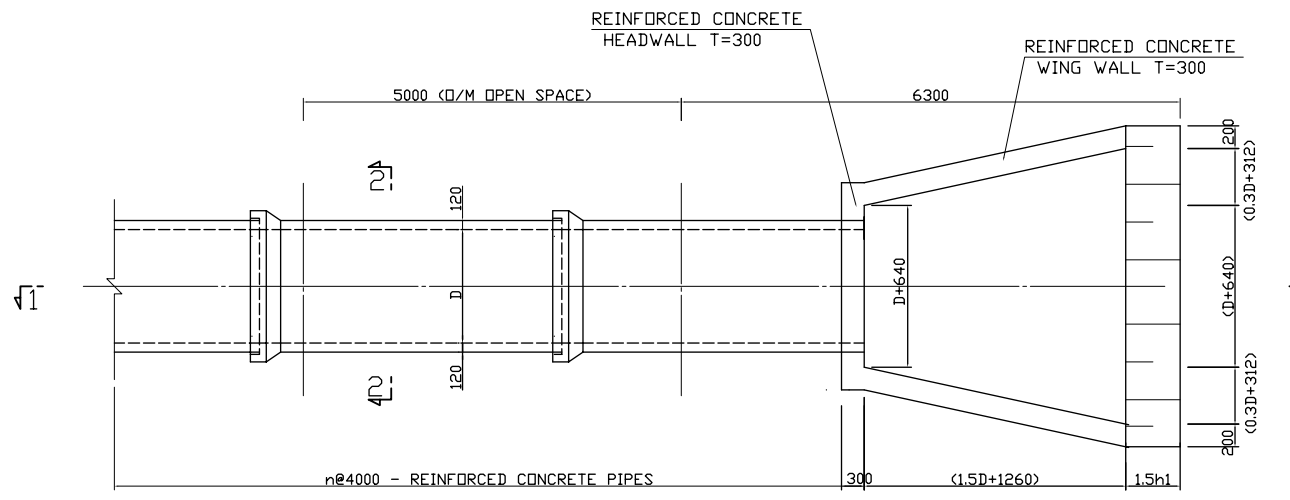


LEGEND

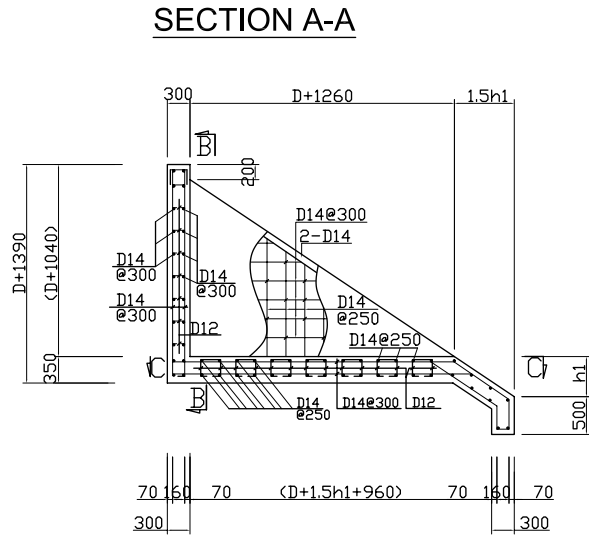
THE VALUE INSIDE BRACKETS IS OF TH - L22

NO.	DATE	DESCRIPTIONS	BY	APPRO.

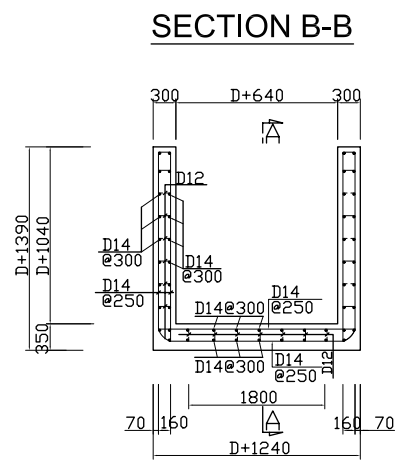
REVISIONS	
PROJECT MANAGEMENT UNIT FOR HO CHI MINH CITY WATER ENVIRONMENT IMPROVEMENT	
THE DETAILED DESIGN STUDY ON HO CHI MINH CITY WATER ENVIRONMENT IMPROVEMENT PROJECT IN THE SOCIALIST REPUBLIC OF VIET NAM	
PACKAGE A TAU HU - BEN NGHE CANAL IMPROVEMENT OUTLET OF SEWERS TH - L18, TH-L22	
SCALE	1:50
JICA JAPAN INTERNATIONAL COOPERATION AGENCY (JICA)	
PACIFIC CONSULTANTS INTERNATIONAL	
DESIGNED TOKUMASU TOSHIKI	CHECKED KONDO MASAMI
DATE : JUNE 2001	DWG. No. PA - THBNCI - 254



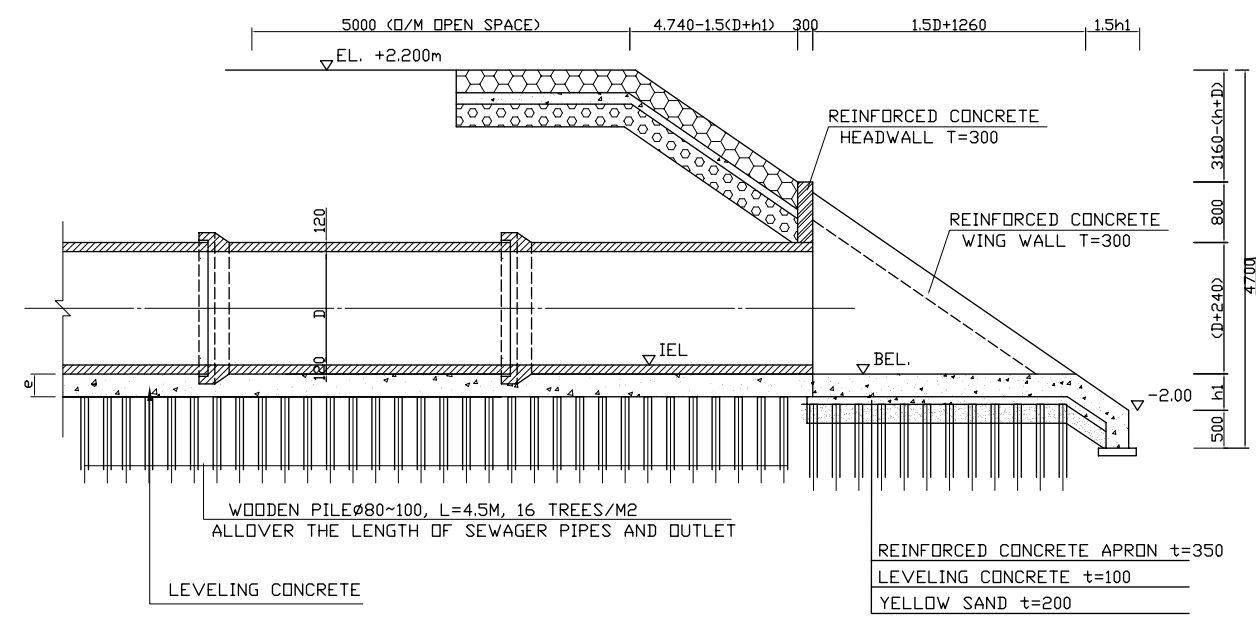
PLAN



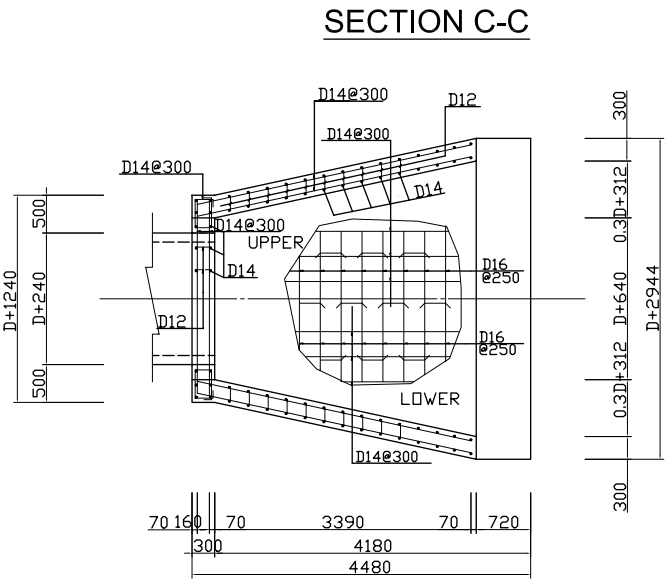
SECTION A-A



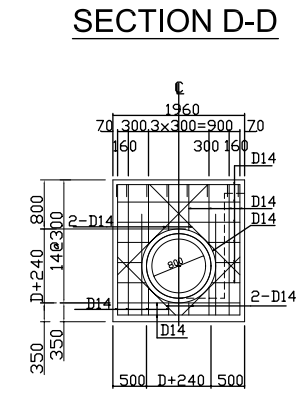
SECTION B-B



SECTION 1-1



SECTION C-C



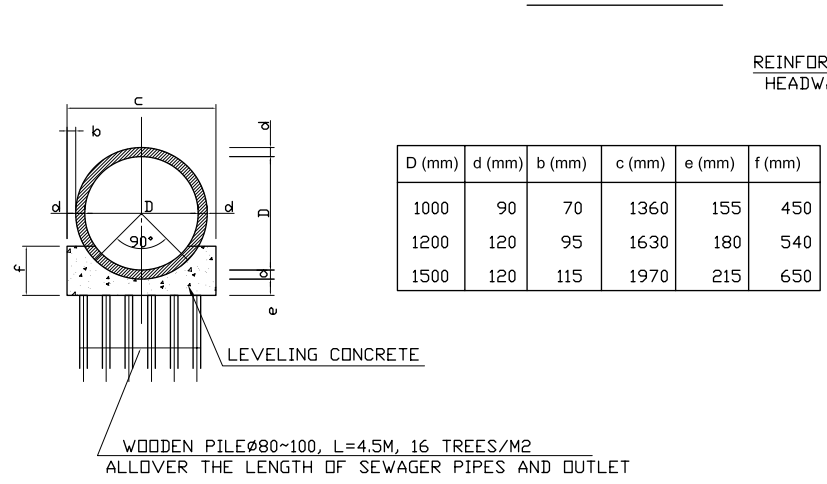
SECTION D-D

LEGEND

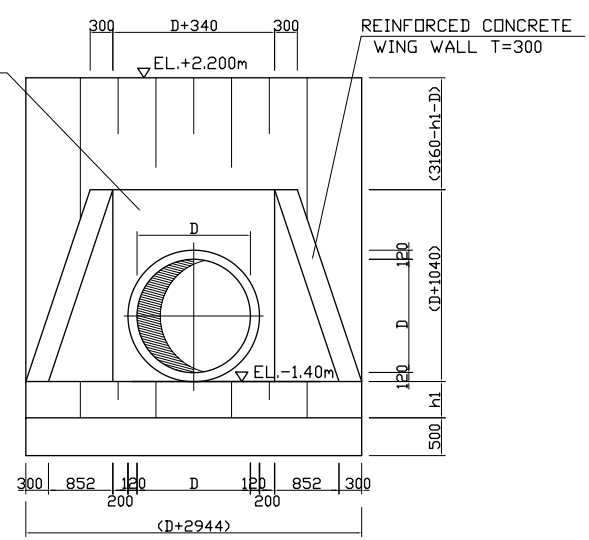
* THIS TYPICAL OUTLET STRUCTURE IS APPLIED FOR CIRCULAR SHAPE OUT LET WITH THE DIAMETERS FROM 1000 TO 1500MM
 * THE LIST OF DIMENSION OF THESE OUTLETS ARE MENTIONED ON THE BELLOW TABLE
 * n: NUMBER OF SEWER PIPE SEGMENT

DIMENSION TABLE

No OF OUTLET	D(mm)	h1(mm)	n	K1	IEL(m)	BEL(m)
BN-L12	1500	320	6	8	-1.56	-1.68
BN-R7	1200	1120	1	7	-0.76	-0.88
BN-L2	1000	1160	4	7	-0.72	-0.84
BN-L3	1000	1380	6	7	-0.50	-0.62
BN-L8	1000	110	7	7	-1.77	-1.89
BN-L9	1000	560	3	7	-1.32	-1.44
BN-L14	1000	700	6	7	-1.18	-1.30
TH-L12	1000	1230	2	7	-0.65	-0.77
TH-L13	1000	1380	5	7	-0.50	-0.62
TH-R2	1000	1850	7	7	-0.03	-0.15
BN-L10	1000	930	4	7	-0.95	-1.07
TH-L17	1000	1820	1	7	-0.06	-0.18
TH-L23	1000	1850	2	7	-0.03	-0.15
TH-R5	1000	600	1	7	-1.28	-1.4
TH-R10	1000	1460	1	7	-0.42	-0.54
TH-R19	1000	1430	1	7	-0.45	-0.57
TH-L11	1500	450	1	7	-1.43	-1.55
BN-L16	1000	2510	7	7	0.63	0.51
BN-R10	1000	740	1	7	-1.14	-1.26
BN-R17	1000	1720	4	7	-0.16	-0.28
TH-L3	1000	1940	4	7	0.06	-0.06
TH-L4	1000	1490	8	7	-0.39	-0.51
TH-L5	1000	1480	11	7	-0.40	-0.52
TH-L7	1000	1610	6	7	-0.27	-0.39



SECTION 2-2



FRONT OF VIEW

NO.	DATE	DESCRIPTIONS	BY	APRO.
REVISIONS				
PROJECT MANAGEMENT UNIT FOR HO CHI MINH CITY WATER ENVIRONMENT IMPROVEMENT				
THE DETAILED DESIGN STUDY ON HO CHI MINH CITY WATER ENVIRONMENT IMPROVEMENT PROJECT IN THE SOCIALIST REPUBLIC OF VIET NAM				
PACKAGE A TAU HU - BEN NGHE CANAL IMPROVEMENT OUTLET OF SEWERS PIPE DIA. FROM 1000 TO 1500 mm (REVEMENT TYPE A)				
SCALE 1:50				
JICA		JAPAN INTERNATIONAL COOPERATION AGENCY (JICA)		
PACIFIC CONSULTANTS INTERNATIONAL				
DESIGNED TOKUMASU TOSHIKI		CHECKED KONDO MASAMI		
DATE : JUNE 2001		DWG. No. PA - THBNCI - 255		