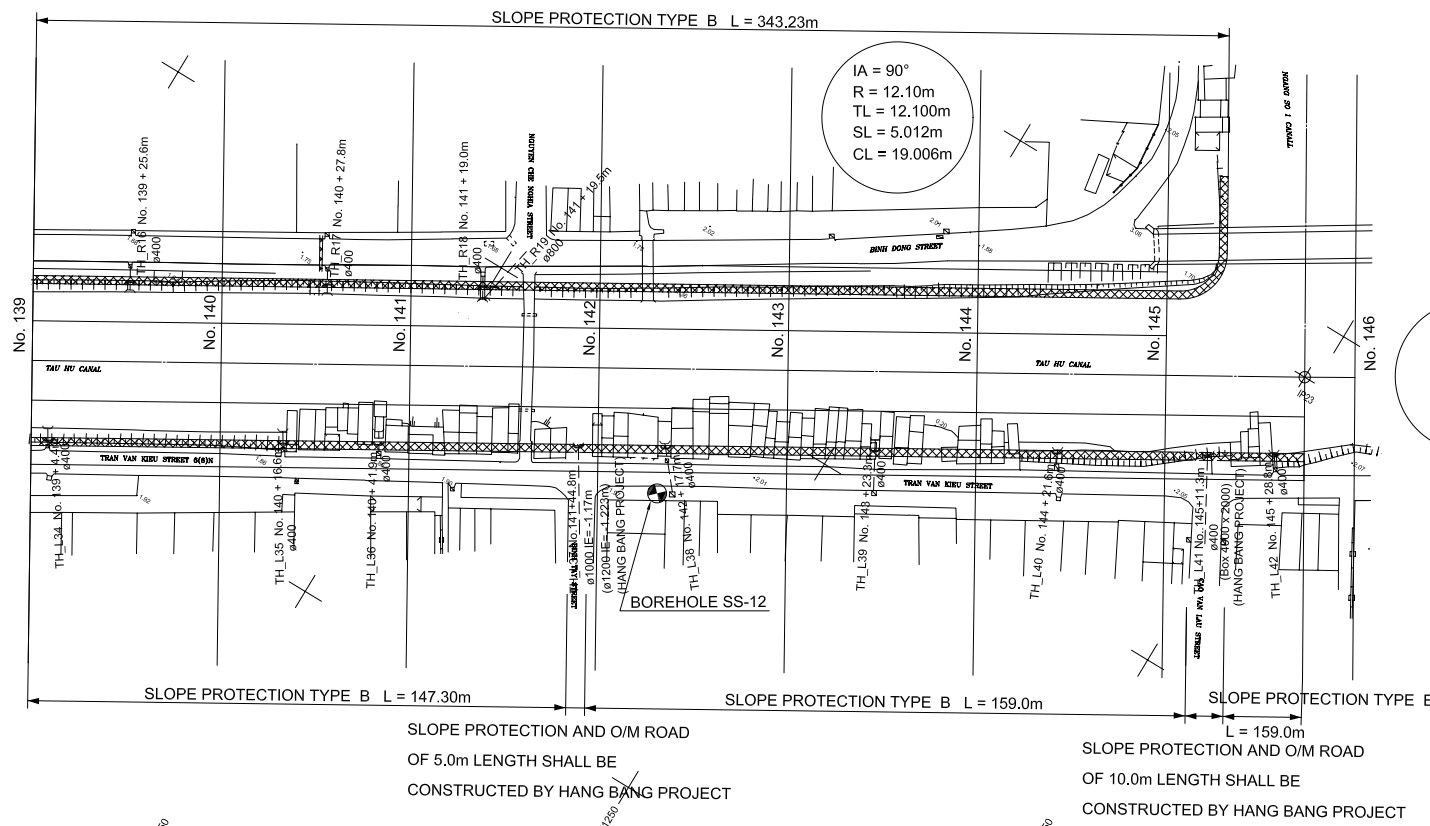
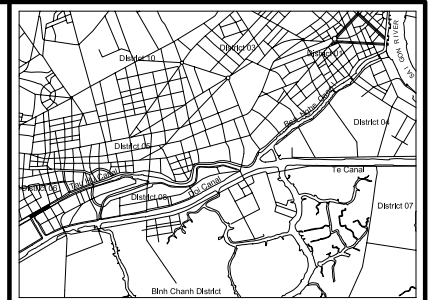
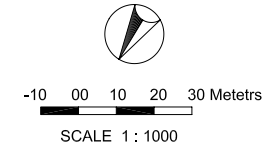
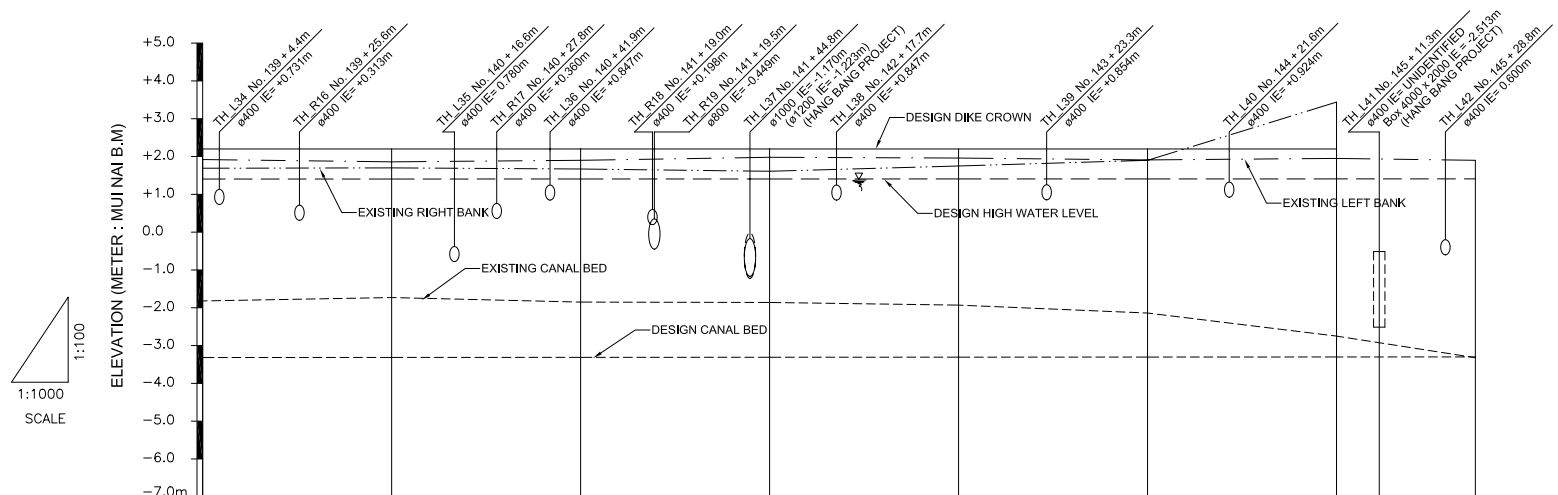


NO.	DATE	DESCRIPTIONS	BY	APRO.
REVISIONS				
PROJECT MANAGEMENT UNIT FOR HO CHI MINH CITY WATER ENVIRONMENT IMPROVEMENT				
THE DETAILED DESIGN STUDY ON HO CHI MINH CITY WATER ENVIRONMENT IMPROVEMENT PROJECT IN THE SOCIALIST REPUBLIC OF VIET NAM				
PACKAGE A TAU HU - BEN NGHE CANAL IMPROVEMENT				
PLAN AND PROFILE (No. 127 ~ No. 139)				
SCALE : AS SHOW				
JAPAN INTERNATIONAL COOPERATION AGENCY ( JICA )				
PACIFIC CONSULTANTS INTERNATIONAL				
DESIGNED TOKUMASU TOSHIAKI		CHECKED KONDO MASAMI		
DATE : JUNE 2001		DWG. No. PA - THBNCI - 213		

# PLAN



# PROFILE



Station No.	Design		Existing		Accumulate Distance (m)
	Dike Crown	High Water Level	Left Bank	Right Bank	
No.139	2.200	1.405	1.924	1.690	6950
No.140	2.200	1.405	1.864	1.704	7000
No.141	2.200	1.406	1.900	1.674	7050
No.142	2.200	1.406	1.984	1.614	7100
No.143	2.200	1.407	1.964	1.748	7150
No.144	2.200	1.407	1.912	1.904	7200
No.145	2.200	1.408	1.948	3.440	7250
IP23-7286.72	2.200	1.408	1.904	-	7286.72

NO.	DATE	DESCRIPTIONS	BY	APPRO.

### REVISIONS

PROJECT MANAGEMENT UNIT FOR  
 HO CHI MINH CITY  
 WATER ENVIRONMENT IMPROVEMENT

THE DETAILED DESIGN STUDY ON HO CHI MINH CITY  
 WATER ENVIRONMENT IMPROVEMENT PROJECT  
 IN THE SOCIALIST REPUBLIC OF VIET NAM

PACKAGE A  
 TAU HU - BEN NGHE CANAL IMPROVEMENT

**PLAN AND PROFILE**  
 (No. 139 ~ No. 146)

SCALE : AS SHOW

JICA JAPAN INTERNATIONAL COOPERATION AGENCY (JICA)

PACIFIC CONSULTANTS INTERNATIONAL

DESIGNED: TOKUMASU TOSHIKI  
 CHECKED: KONDO MASAMI

DATE : JUNE 2001 DWG. No. PA - THBNCI - 214