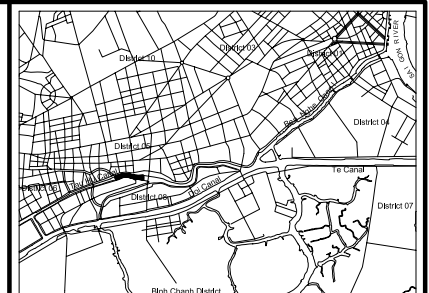
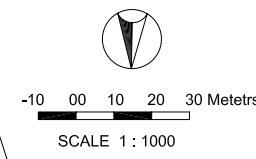
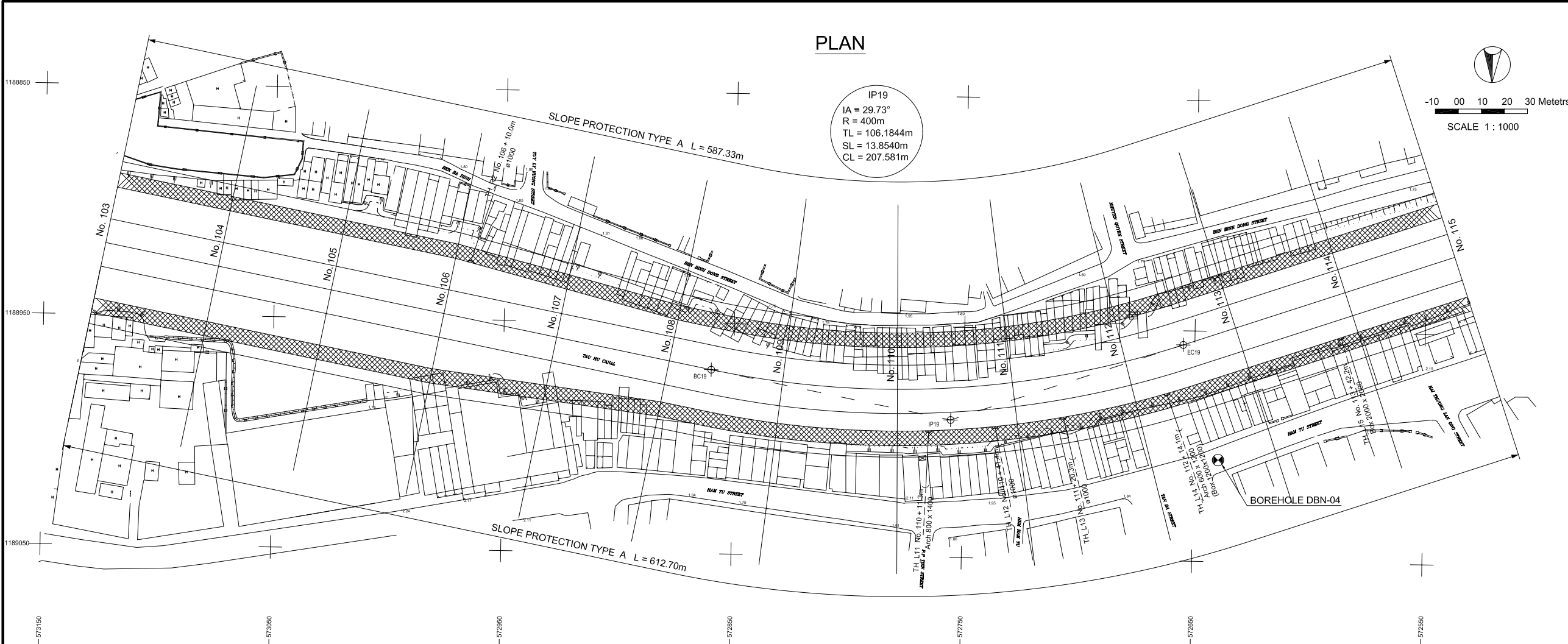


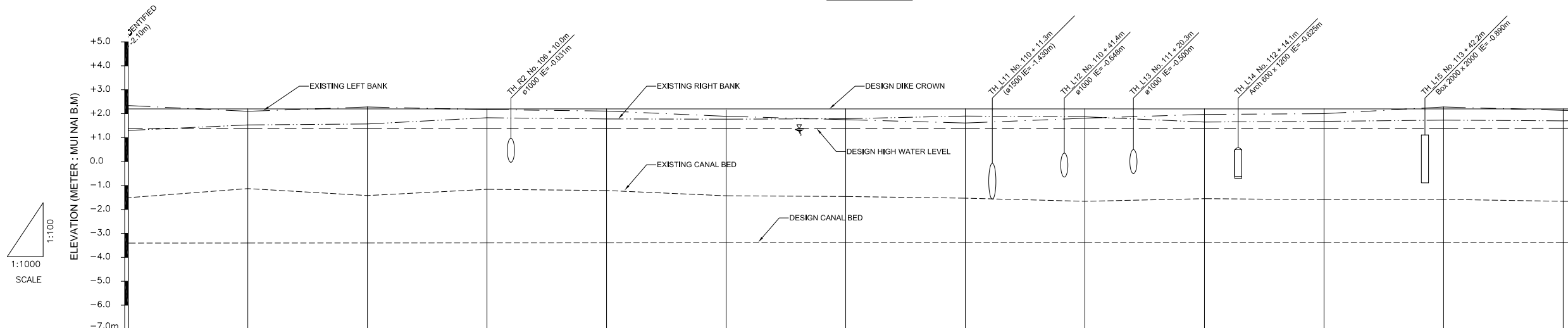
NO.	DATE	DESCRIPTIONS	BY	APPRO.
REVISIONS				
PROJECT MANAGEMENT UNIT FOR HO CHI MINH CITY WATER ENVIRONMENT IMPROVEMENT				
THE DETAILED DESIGN STUDY ON HO CHI MINH CITY WATER ENVIRONMENT IMPROVEMENT PROJECT IN THE SOCIALIST REPUBLIC OF VIET NAM				
TAU HU - BEN NGHE CANAL IMPROVEMENT				
PLAN AND PROFILE (No. 91 ~ No. 103)				
SCALE : AS SHOW				
JAPAN INTERNATIONAL COOPERATION AGENCY (JICA)				
PACIFIC CONSULTANTS INTERNATIONAL				
DESIGNED TOKUMASU TOSHIKI		CHECKED KONDO MASAMI		
DATE : JUNE 2001		DWG. No. PA - THBNCI - 210		

PLAN



LOCATION MAP
Scale 1:65,000

PROFILE



Station No.	Design				Existing			Accumulate Distance (m)
	Dike Crown	High Water Level	Canal Bed	Left Bank	Right Bank	Canal Bed		
No.103	2.200	1.387	-3.407	2.340	1.300	-1.514	5150	
No.104	2.200	1.387	-3.404	2.104	1.525	-1.132	5200	
No.105	2.200	1.388	-3.402	2.284	1.567	-1.424	5250	
No.106	2.200	1.388	-3.399	2.174	1.830	-1.164	5300	
No.107	2.200	1.389	-3.397	2.110	1.784	-1.213	5350	
No.108	2.200	1.389	-3.394	1.890	1.770	-1.434	5400	
No.109	2.200	1.390	-3.392	1.750	1.794	-1.464	5450	
No.110	2.200	1.390	-3.389	1.900	1.610	-1.534	5500	
No.111	2.200	1.391	-3.387	1.810	1.870	-1.664	5550	
No.112	2.200	1.391	-3.384	1.970	1.648	-1.546	5600	
No.113	2.200	1.392	-3.382	2.000	1.680	-1.593	5650	
No.114	2.200	1.392	-3.379	2.284	1.725	-1.584	5700	
No.115	2.200	1.390	-3.377	2.140	1.698	-1.664	5750	

NO.	DATE	DESCRIPTIONS	BY	APRO.

REVISIONS

PROJECT MANAGEMENT UNIT FOR
HO CHI MINH CITY
WATER ENVIRONMENT IMPROVEMENT

THE DETAILED DESIGN STUDY ON HO CHI MINH CITY
WATER ENVIRONMENT IMPROVEMENT PROJECT
IN THE SOCIALIST REPUBLIC OF VIET NAM

PACKAGE A
TAU HU - BEN NGHE CANAL IMPROVEMENT

PLAN AND PROFILE
(No. 103 ~ No. 115)

SCALE : AS SHOW

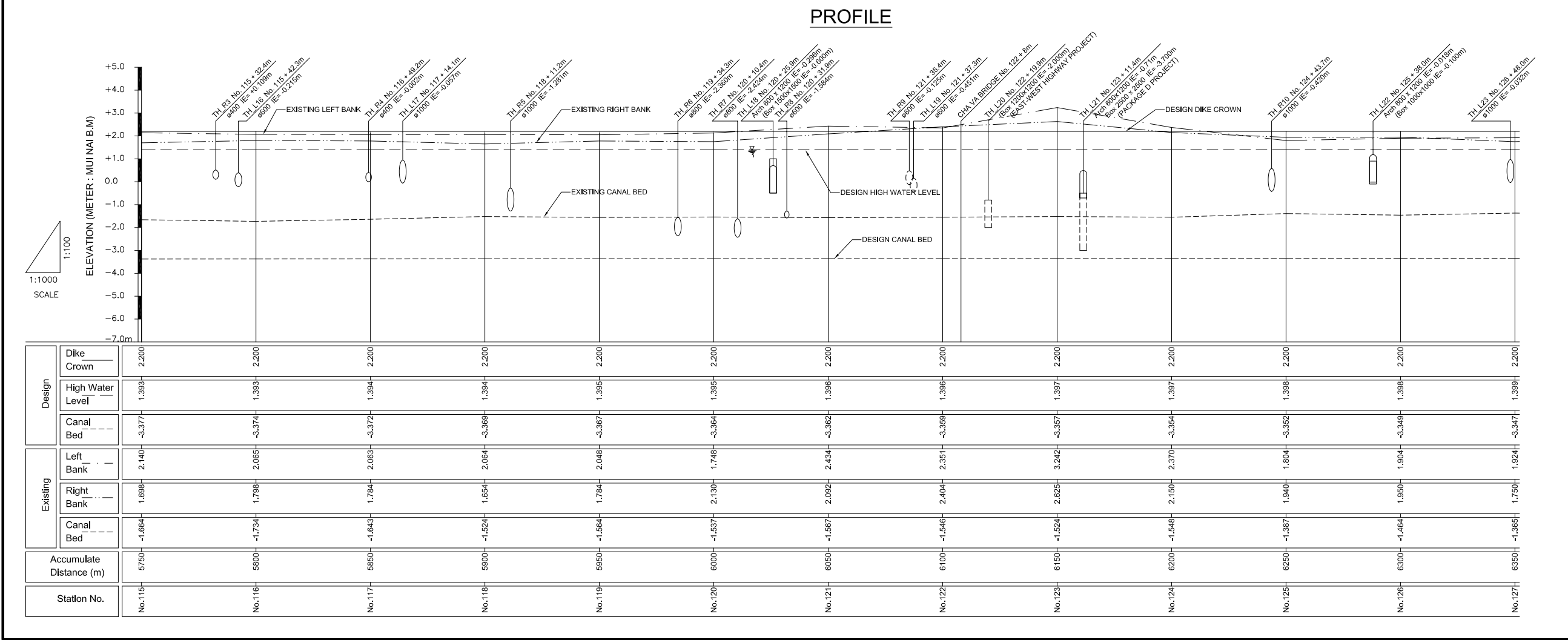
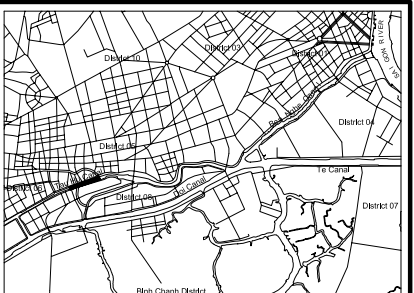
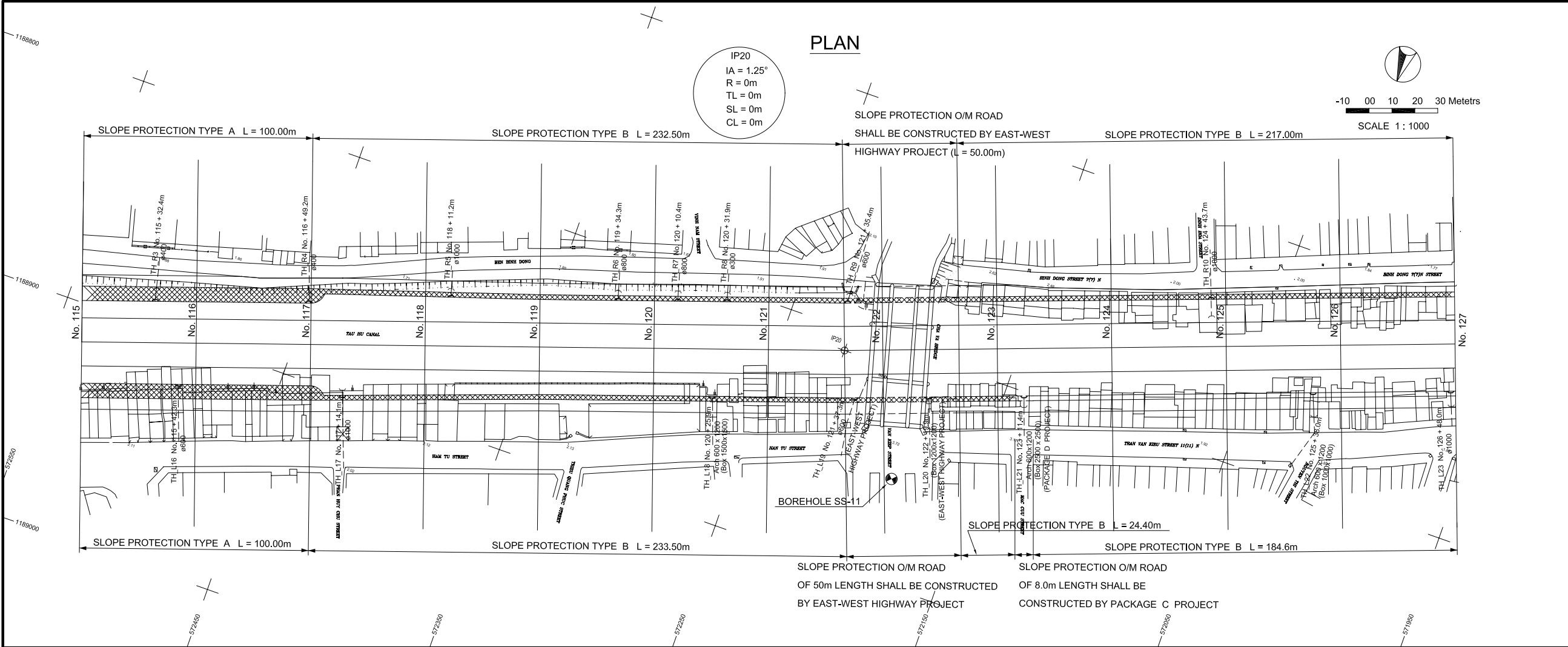
JICA JAPAN INTERNATIONAL COOPERATION AGENCY (JICA)

PACIFIC CONSULTANTS INTERNATIONAL

DESIGNED
TOKUMASU TOSHIKI

CHECKED
KONDO MASAMI

DATE : JUNE 2001 DWG. No. PA - THBNCI - 211



NO.	DATE	DESCRIPTIONS	BY	APRO.
REVISIONS				
PROJECT MANAGEMENT UNIT FOR HO CHI MINH CITY WATER ENVIRONMENT IMPROVEMENT				
THE DETAILED DESIGN STUDY ON HO CHI MINH CITY WATER ENVIRONMENT IMPROVEMENT PROJECT IN THE SOCIALIST REPUBLIC OF VIET NAM				
PACKAGE A TAU HU - BEN NGHE CANAL IMPROVEMENT				
PLAN AND PROFILE (No. 115 ~ No. 127)				
SCALE : AS SHOW				
JAPAN INTERNATIONAL COOPERATION AGENCY (JICA)				
PACIFIC CONSULTANTS INTERNATIONAL				
DESIGNED TOKUMASU TOSHIKI		CHECKED KONDO MASAMI		
DATE : JUNE 2001		DWG. No. PA - THBNCI - 212		