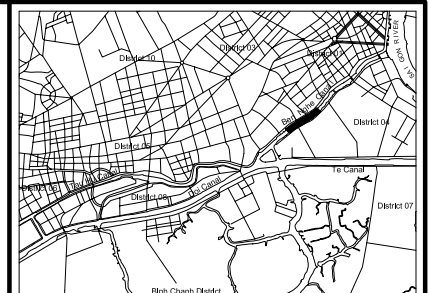
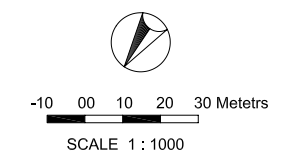
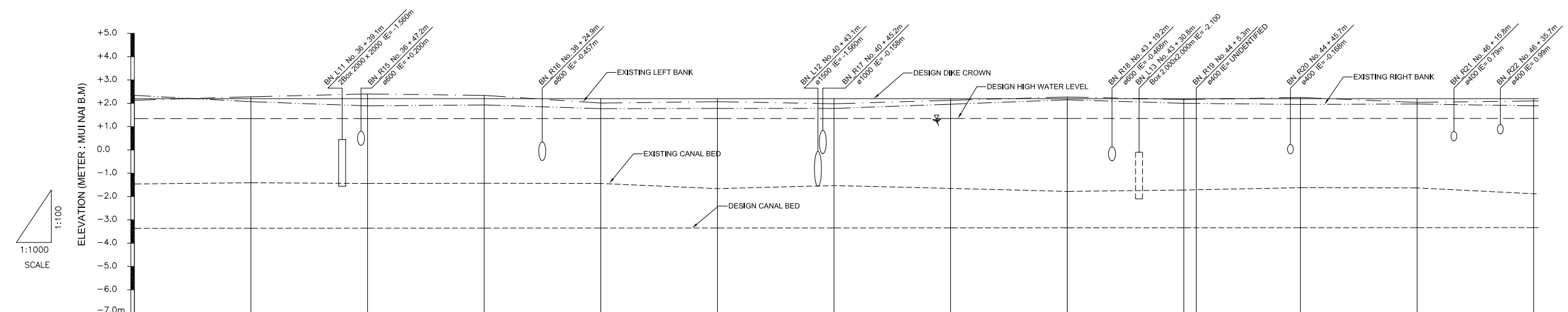
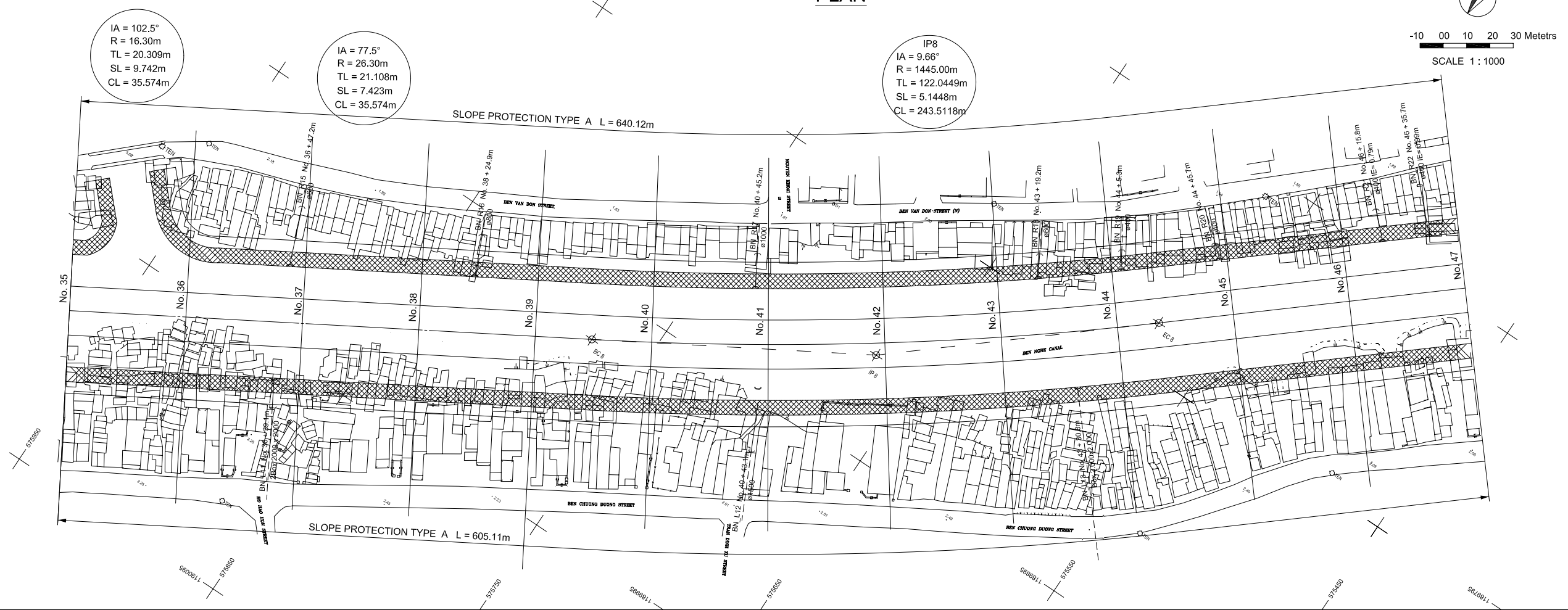


PLAN



LOCATION MAP
Scale 1:65,000



NO.	DATE	DESCRIPTIONS	BY	APRO.

REVISIONS

PROJECT MANAGEMENT UNIT FOR
HO CHI MINH CITY
WATER ENVIRONMENT IMPROVEMENT

THE DETAILED DESIGN STUDY ON HO CHI MINH CITY
WATER ENVIRONMENT IMPROVEMENT PROJECT
IN THE SOCIALIST REPUBLIC OF VIET NAM

PACKAGE A
TAU HU - BEN NGHE CANAL IMPROVEMENT

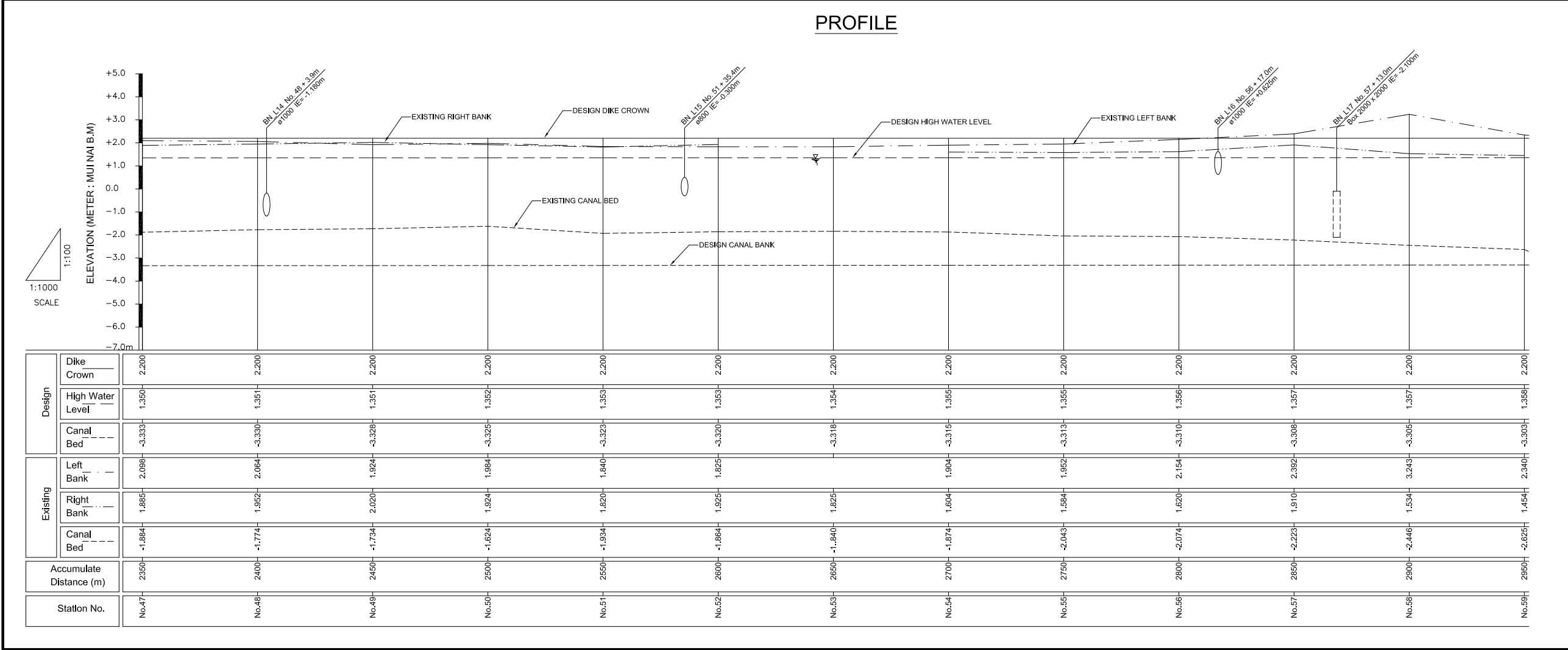
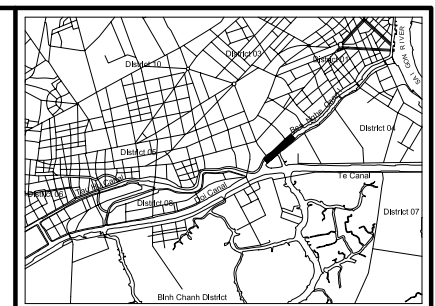
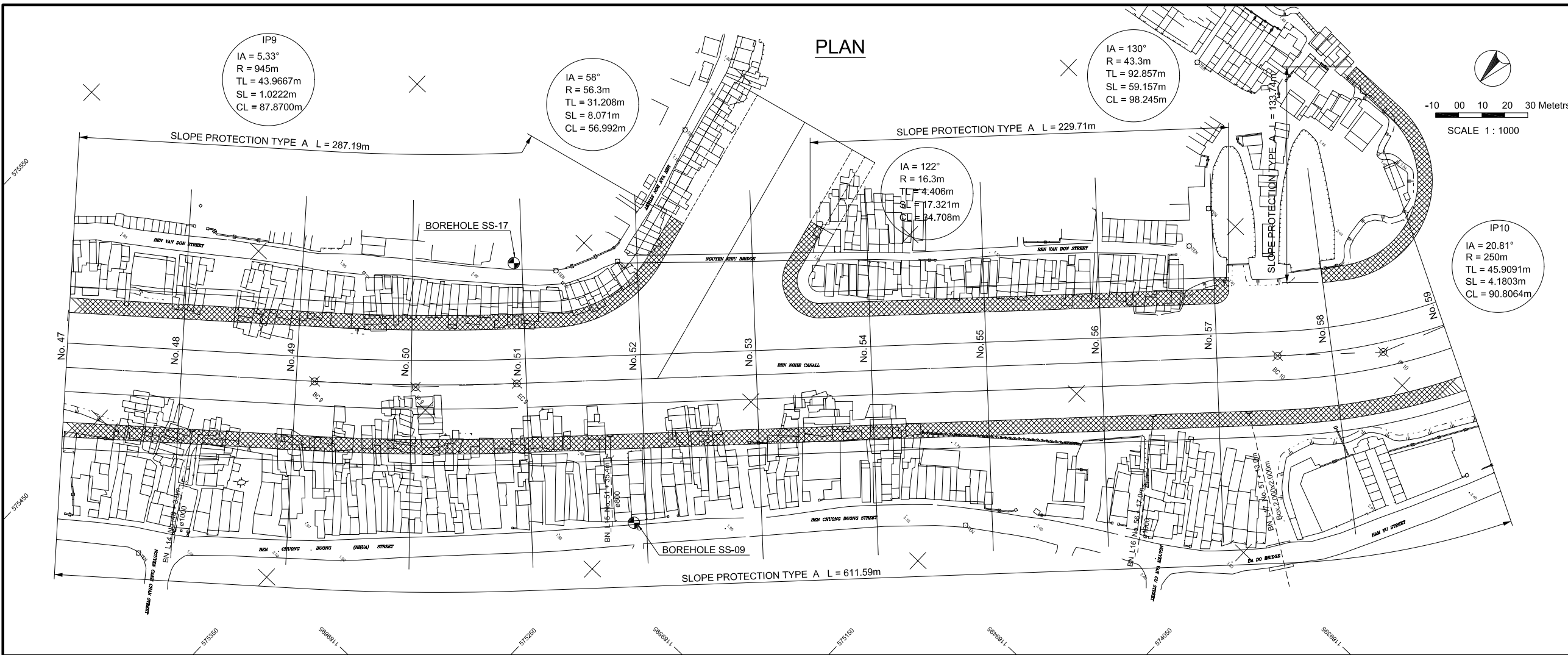
PLAN AND PROFILE
(No. 35 ~ No. 47)

SCALE : AS SHOW

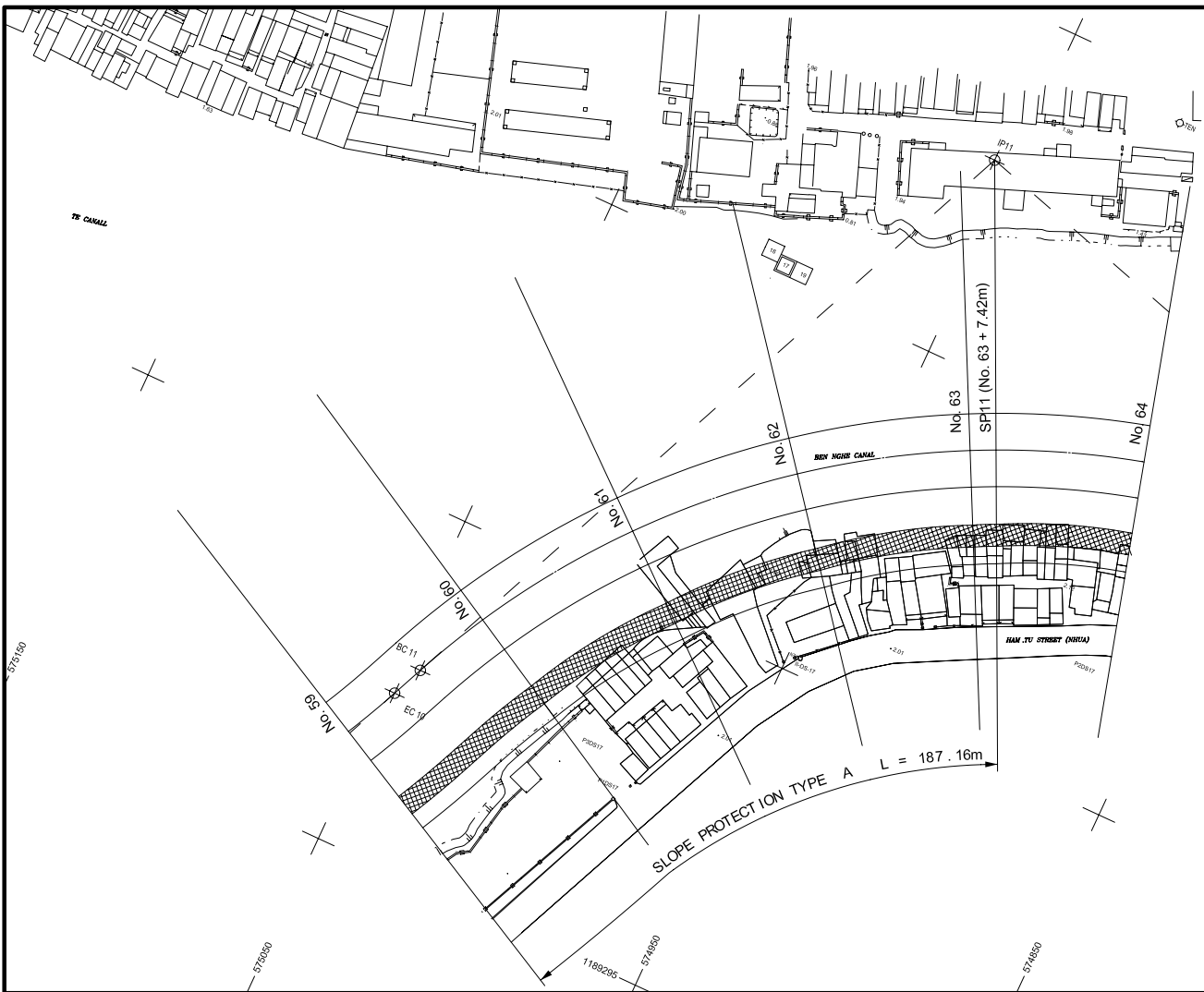
JICA JAPAN INTERNATIONAL COOPERATION AGENCY (JICA)

PACIFIC CONSULTANTS INTERNATIONAL

DESIGNED: TOKUMASU TOSHIKI
CHECKED: KONDO MASAMI

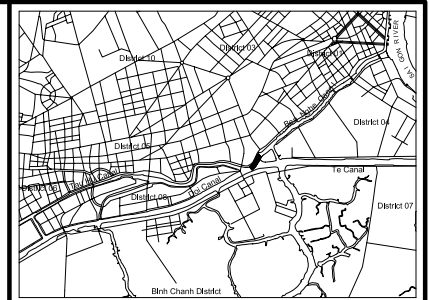
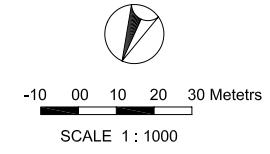


NO.	DATE	DESCRIPTIONS	BY	APRO.
REVISIONS				
PROJECT MANAGEMENT UNIT FOR HO CHI MINH CITY WATER ENVIRONMENT IMPROVEMENT				
THE DETAILED DESIGN STUDY ON HO CHI MINH CITY WATER ENVIRONMENT IMPROVEMENT PROJECT IN THE SOCIALIST REPUBLIC OF VIET NAM				
PACKAGE A TAU HU - BEN NGHE CANAL IMPROVEMENT				
PLAN AND PROFILE (No. 47 ~ No. 59)				
SCALE : AS SHOW				
JAPAN INTERNATIONAL COOPERATION AGENCY (JICA)				
PACIFIC CONSULTANTS INTERNATIONAL				
DESIGNED TOKUMASU TOSHIKI		CHECKED KONDO MASAMI		
DATE : JUNE 2001		DWG. No. PA - THBNCI - 205		

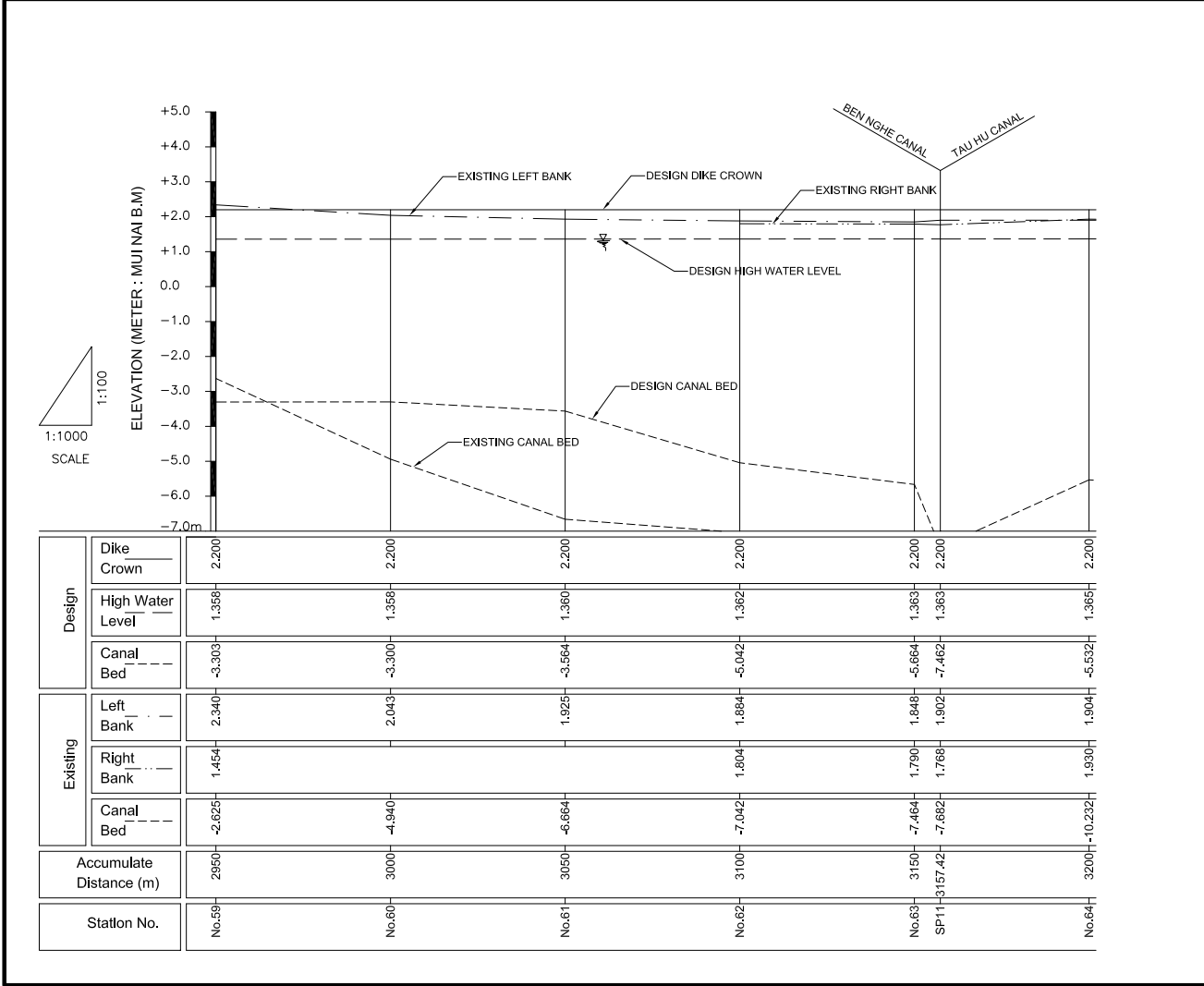


PLAN

IP11
 IA = 82.69°
 R = 250m
 TL = 219.9932m
 SL = 83.0120m
 CL = 360.8198m



LOCATION MAP
 Scale 1 : 65,000



PROFILE

NO.	DATE	DESCRIPTIONS	BY	APRO.

REVISIONS

PROJECT MANAGEMENT UNIT FOR
 HO CHI MINH CITY
 WATER ENVIRONMENT IMPROVEMENT

THE DETAILED DESIGN STUDY ON HO CHI MINH CITY
 WATER ENVIRONMENT IMPROVEMENT PROJECT
 IN THE SOCIALIST REPUBLIC OF VIET NAM

PACKAGE A
 TAU HU - BEN NGHE CANAL IMPROVEMENT
PLAN AND PROFILE
 (No. 59 ~ No. 64)

SCALE : AS SHOW

JICA JAPAN INTERNATIONAL COOPERATION AGENCY (JICA)

PACIFIC CONSULTANTS INTERNATIONAL

DESIGNED: TOKUMASU TOSHIKI
 CHECKED: KONDO MASAMI

DATE : JUNE 2001 DWG. No. PA - THBNCI - 206