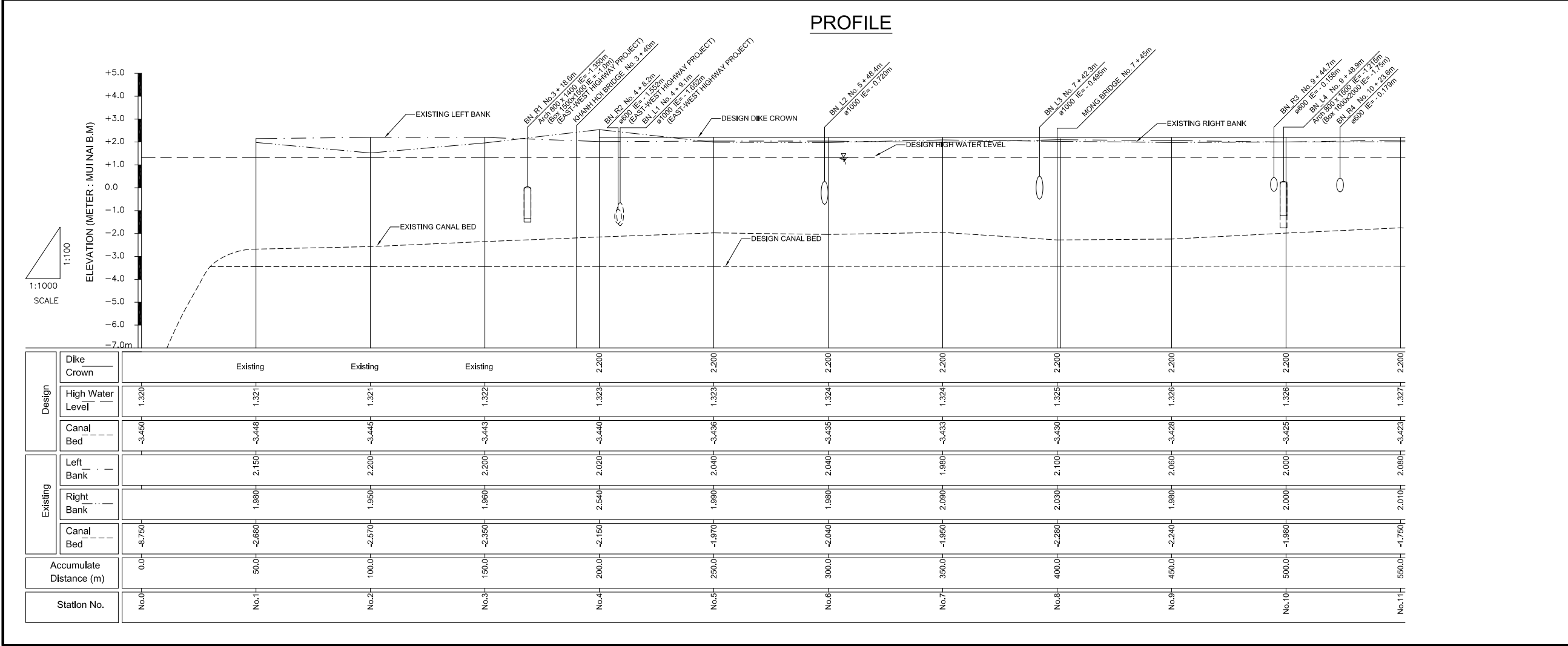
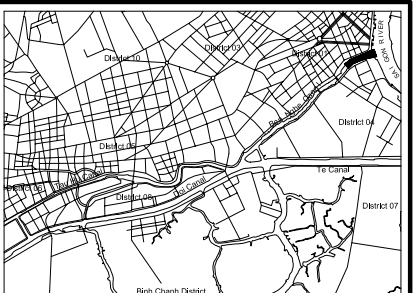
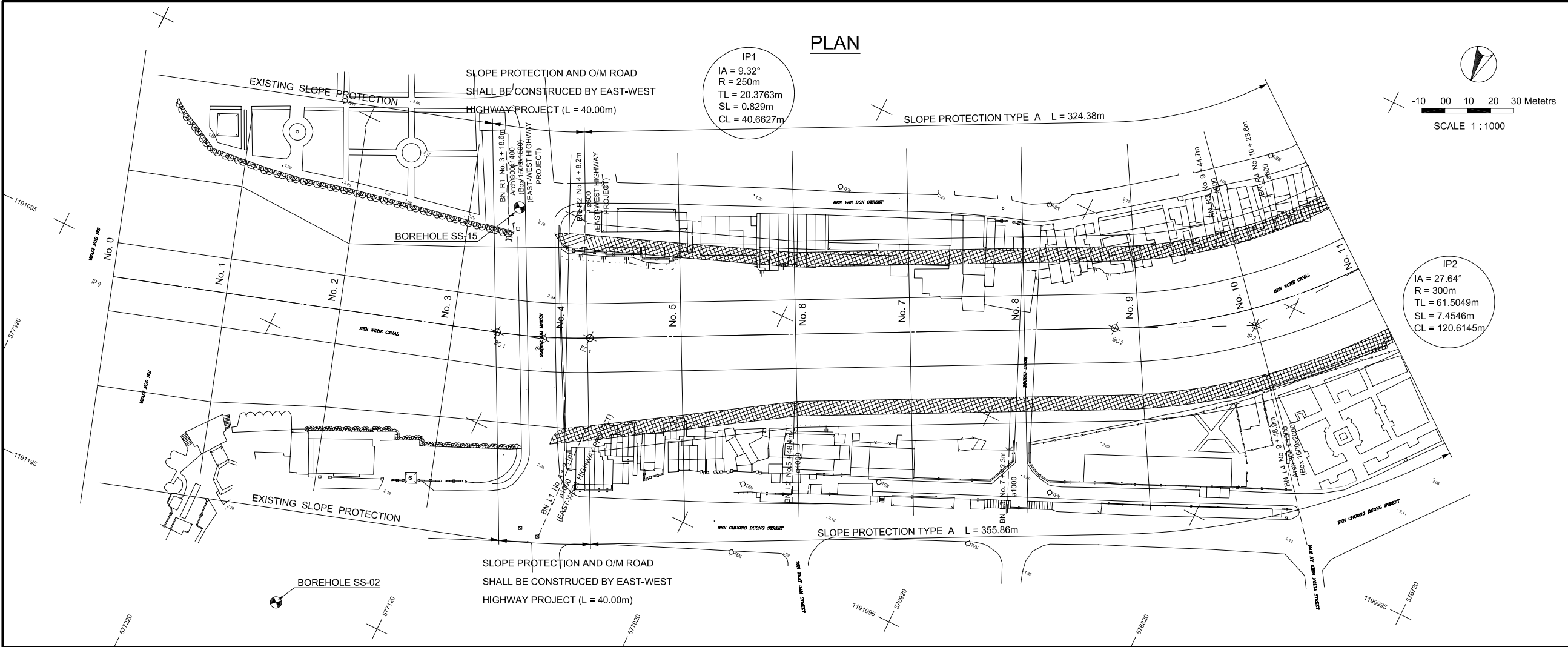


## **CIVIL WORKS**



NO.	DATE	DESCRIPTIONS	BY	APPRO.

REVISIONS

PROJECT MANAGEMENT UNIT FOR  
HO CHI MINH CITY  
WATER ENVIRONMENT IMPROVEMENT

THE DETAILED DESIGN STUDY ON HO CHI MINH CITY  
WATER ENVIRONMENT IMPROVEMENT PROJECT  
IN THE SOCIALIST REPUBLIC OF VIET NAM

PACKAGE A  
TAU HU - BEN NGHE CANAL IMPROVEMENT

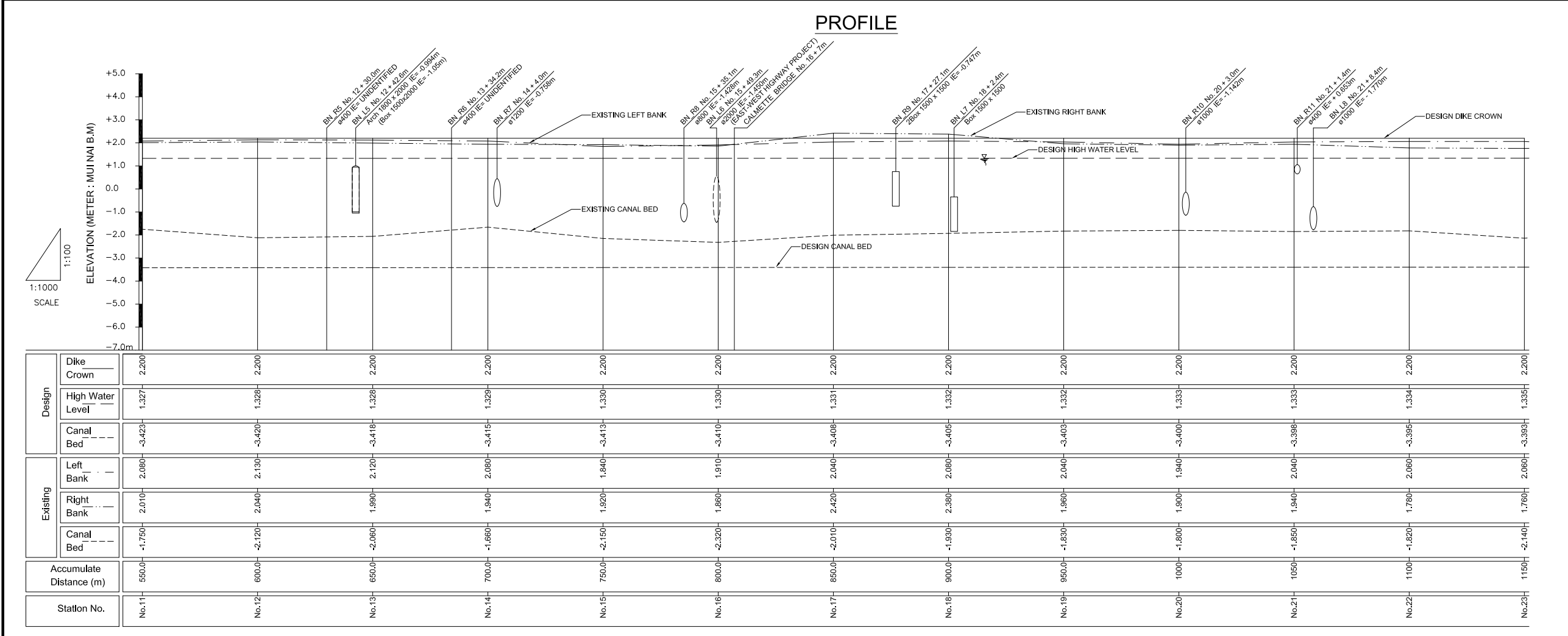
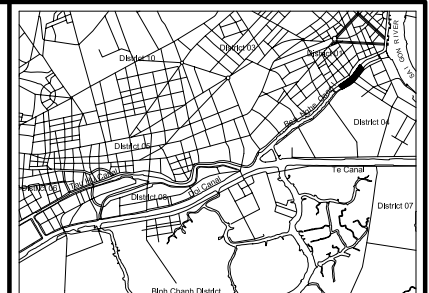
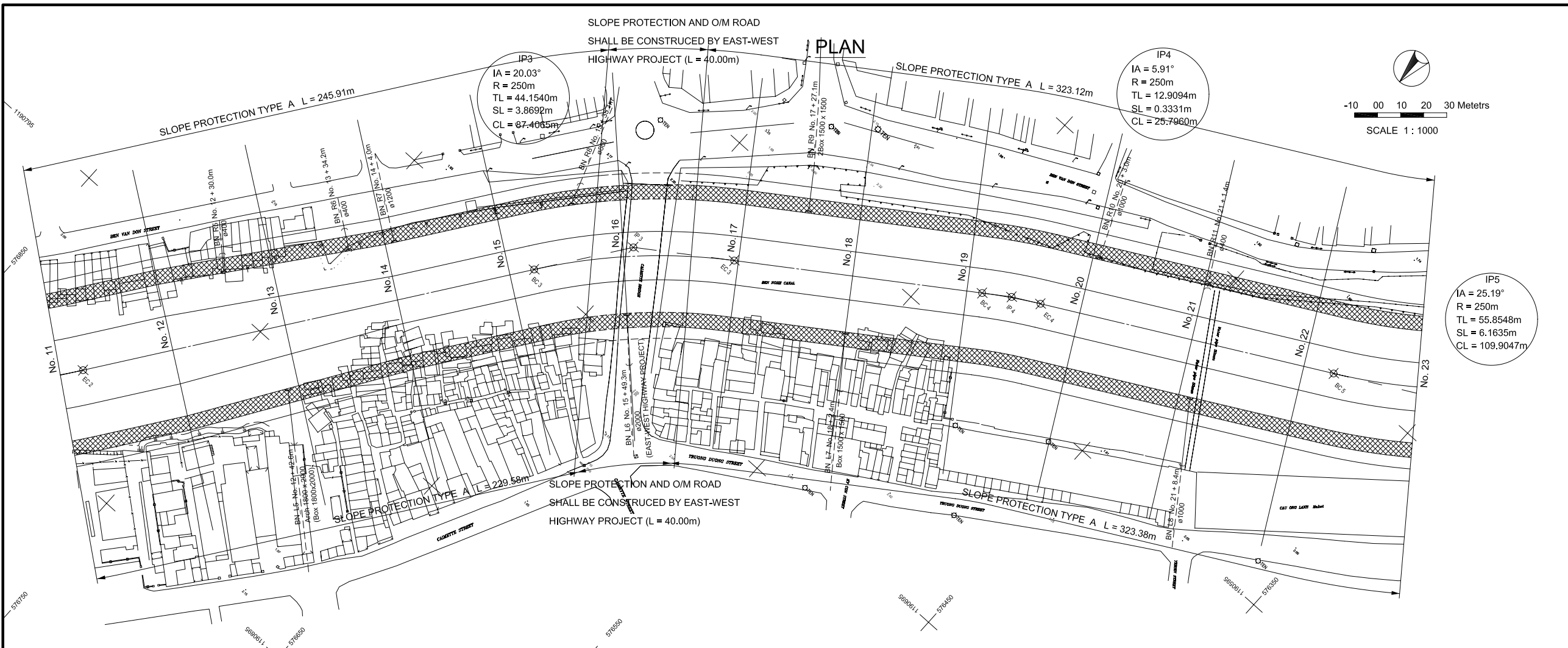
**PLAN AND PROFILE**  
(No. 0 ~ No. 11)

SCALE : AS SHOW

JAPAN INTERNATIONAL COOPERATION  
AGENCY (JICA)

PACIFIC CONSULTANTS INTERNATIONAL

DESIGNED TOKUMASU TOSHIKI	CHECKED KONDO MASAMI
DATE : JUNE 2001    DWG. No. PA - THBNCI - 201	



NO.	DATE	DESCRIPTIONS	BY	APRO.
REVISIONS				

PROJECT MANAGEMENT UNIT FOR  
HO CHI MINH CITY  
WATER ENVIRONMENT IMPROVEMENT

THE DETAILED DESIGN STUDY ON HO CHI MINH CITY  
WATER ENVIRONMENT IMPROVEMENT PROJECT  
IN THE SOCIALIST REPUBLIC OF VIET NAM

PACKAGE A  
TAU HU - BEN NGHE CANAL IMPROVEMENT  
**PLAN AND PROFILE**  
(No. 11 ~ No. 23)

SCALE : AS SHOW

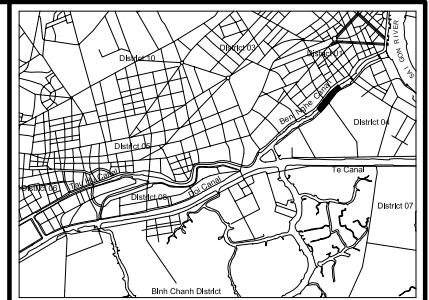
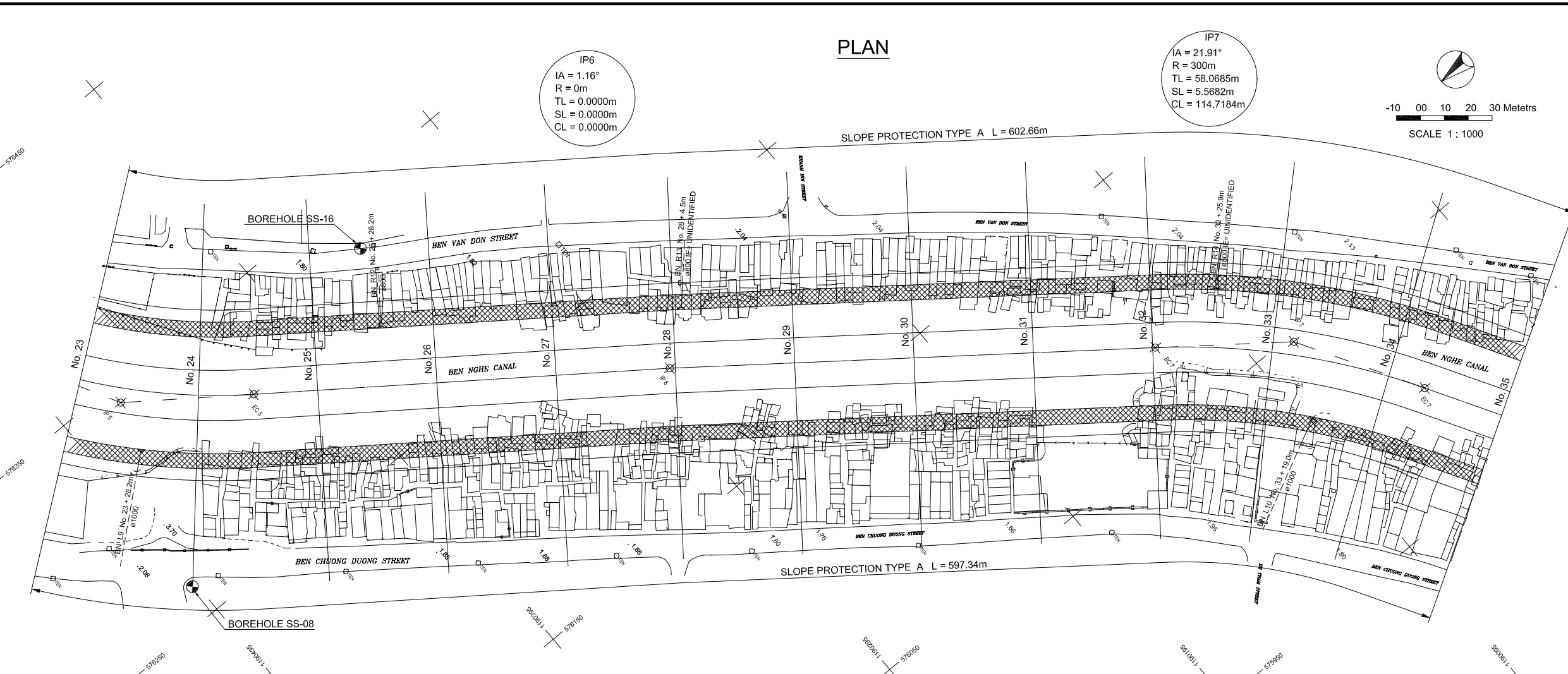
JICA JAPAN INTERNATIONAL COOPERATION AGENCY (JICA)

PACIFIC CONSULTANTS INTERNATIONAL

DESIGNED: TOKUMASU TOSHIKI  
CHECKED: KONDO MASAMI

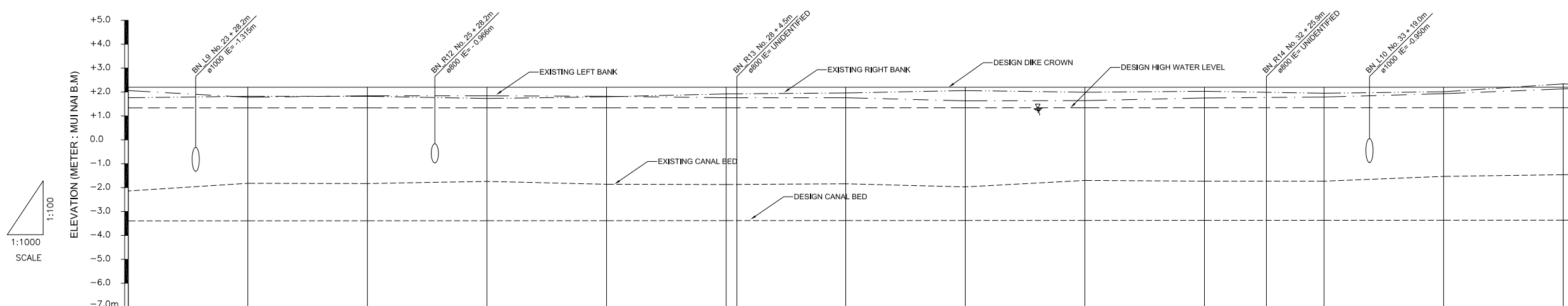
DATE : JUNE 2001 DWG. No. PA - THBNCI - 202

# PLAN



LOCATION MAP  
Scale 1:65,000

# PROFILE



Station No.	Design			Existing			Accumulate Distance (m)
	Dike Crown	High Water Level	Canal Bed	Left Bank	Right Bank	Canal Bed	
No.23	2.200	1.335	-3.393	2.060	1.760	-2.140	1150
No.24	2.200	1.335	-3.390	1.780	1.820	-1.820	1200
No.25	2.200	1.336	-3.388	1.840	1.820	-1.830	1250
No.26	2.200	1.337	-3.385	1.840	1.730	-1.740	1300
No.27	2.200	1.337	-3.383	1.820	1.800	-1.860	1350
No.28	2.200	1.338	-3.380	1.760	1.920	-1.870	1400
No.29	2.200	1.339	-3.378	1.760	1.960	-1.840	1450
No.30	2.200	1.339	-3.375	1.625	2.064	-1.974	1500
No.31	2.200	1.340	-3.373	1.640	1.994	-1.704	1550
No.32	2.200	1.341	-3.370	1.748	2.030	-1.725	1600
No.33	2.200	1.341	-3.368	1.790	1.952	-1.734	1650
No.34	2.200	1.342	-3.365	1.925	2.012	-1.534	1714.59
No.35	2.200	1.342	-3.363	2.134	2.340	-1.464	1750

NO.	DATE	DESCRIPTIONS	BY	APPRO.

### REVISIONS

PROJECT MANAGEMENT UNIT FOR  
HO CHI MINH CITY  
WATER ENVIRONMENT IMPROVEMENT

THE DETAILED DESIGN STUDY ON HO CHI MINH CITY  
WATER ENVIRONMENT IMPROVEMENT PROJECT  
IN THE SOCIALIST REPUBLIC OF VIET NAM

### PACKAGE A TAU HU - BEN NGHE CANAL IMPROVEMENT PLAN AND PROFILE (No. 23 ~ No. 35)

SCALE : AS SHOW

JICA JAPAN INTERNATIONAL COOPERATION AGENCY (JICA)

PACIFIC CONSULTANTS INTERNATIONAL

DESIGNED: TOKUMASU TOSHIKI  
CHECKED: KONDO MASAMI

DATE: JUNE 2001 DWG. No. PA - THBNCI - 203