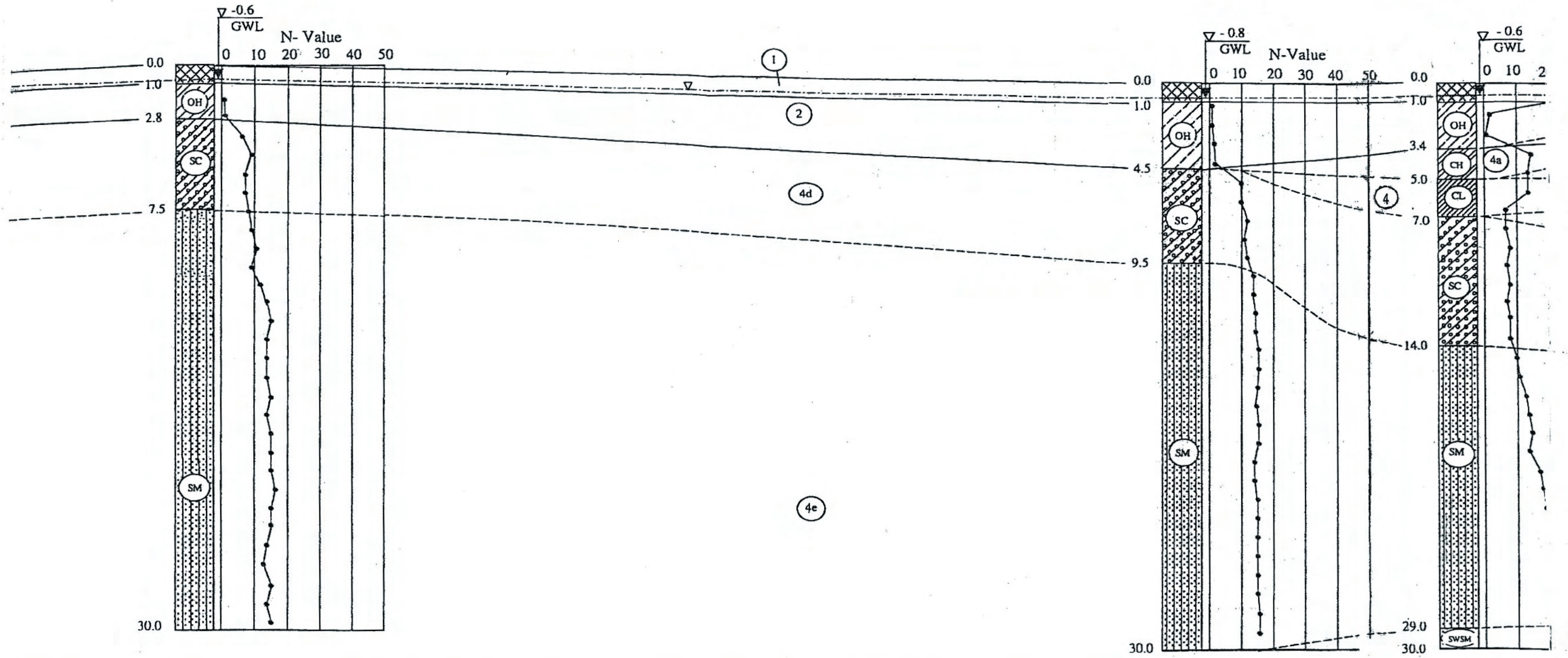


Tau Hu - Ben Nghe C  
 SCALE: Vertical 1/2  
 Horizontal 1/2

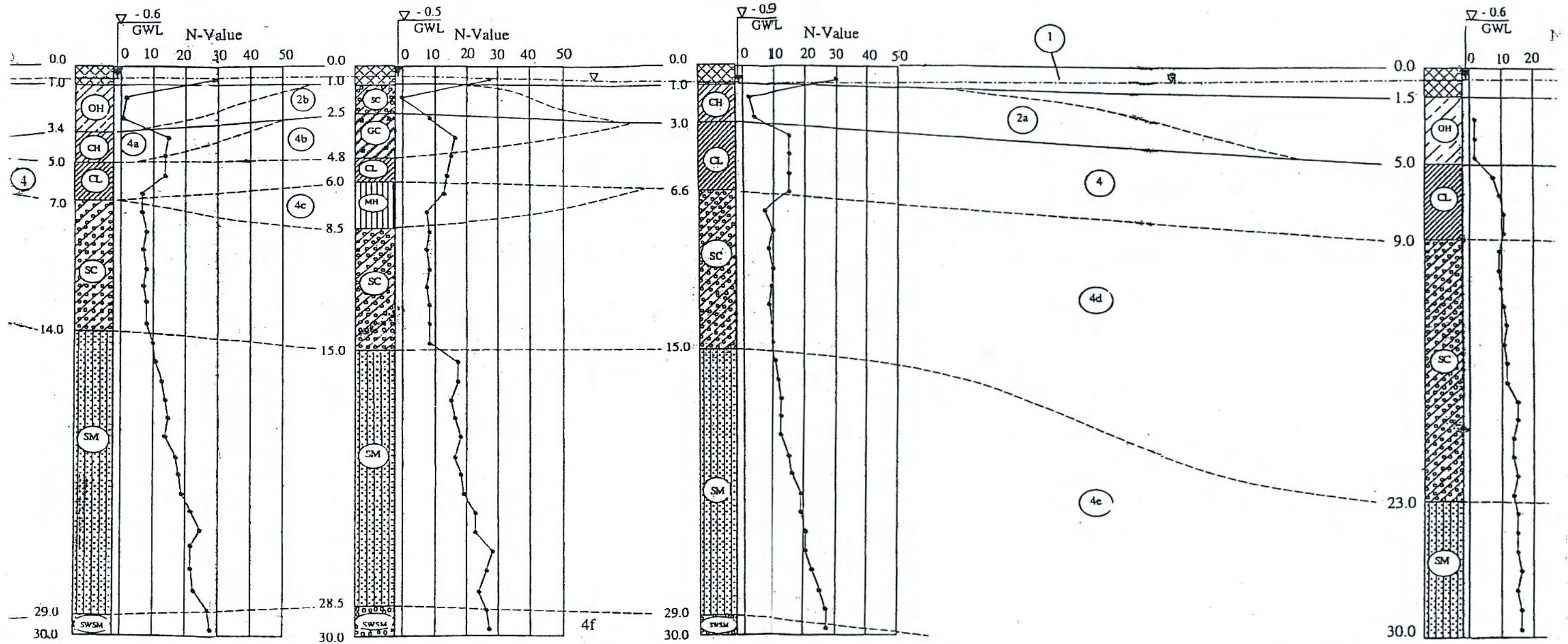


SC-03	SS-10	DBN-01
30	30	30
2.80	1.61	2.00
690	110	

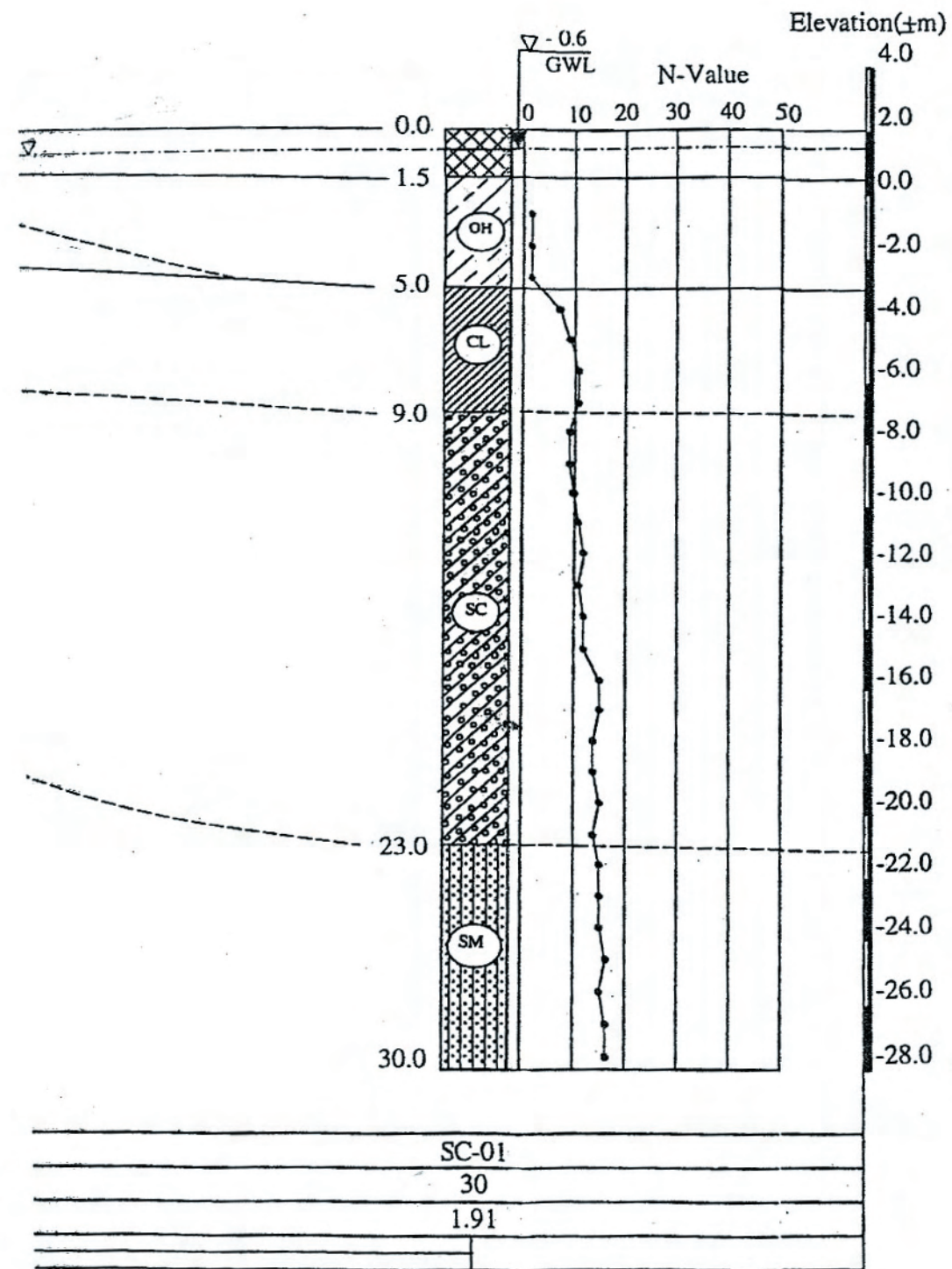
au Hu - Ben Nghe Canal

SCALE: Vertical 1/200

Horizontal 1/2500



DBN-01	DBN-02	DBN-03	SC-01
30	30	30	30
2.00	2.00	2.19	1.91
150	290	500	



### LEGEND

-  Ground made : Clayey sand or gravelly sand with cobble of stone, concrete
-  Very soft, high plasticity, blackish grey ORGANIC CLAY
-  Medium stiff, high plasticity, yellowish brown CLAY
-  Loose, blackish grey, CLAYEY SAND
-  Stiff, low plasticity, yellowish grey SANDY CLAY
-  Stiff, high plasticity, reddish yellow SILTY CLAY
-  Medium dense, yellowish brown CLAYEY graven with SAND
-  Medium stiff, high plasticity, yellowish white SAND
-  Loose, yellowish whitish grey SAND
-  Medium dense, yellowish brownish grey SILTY SAND
-  Medium dense, yellow, well graded SAND with SILY