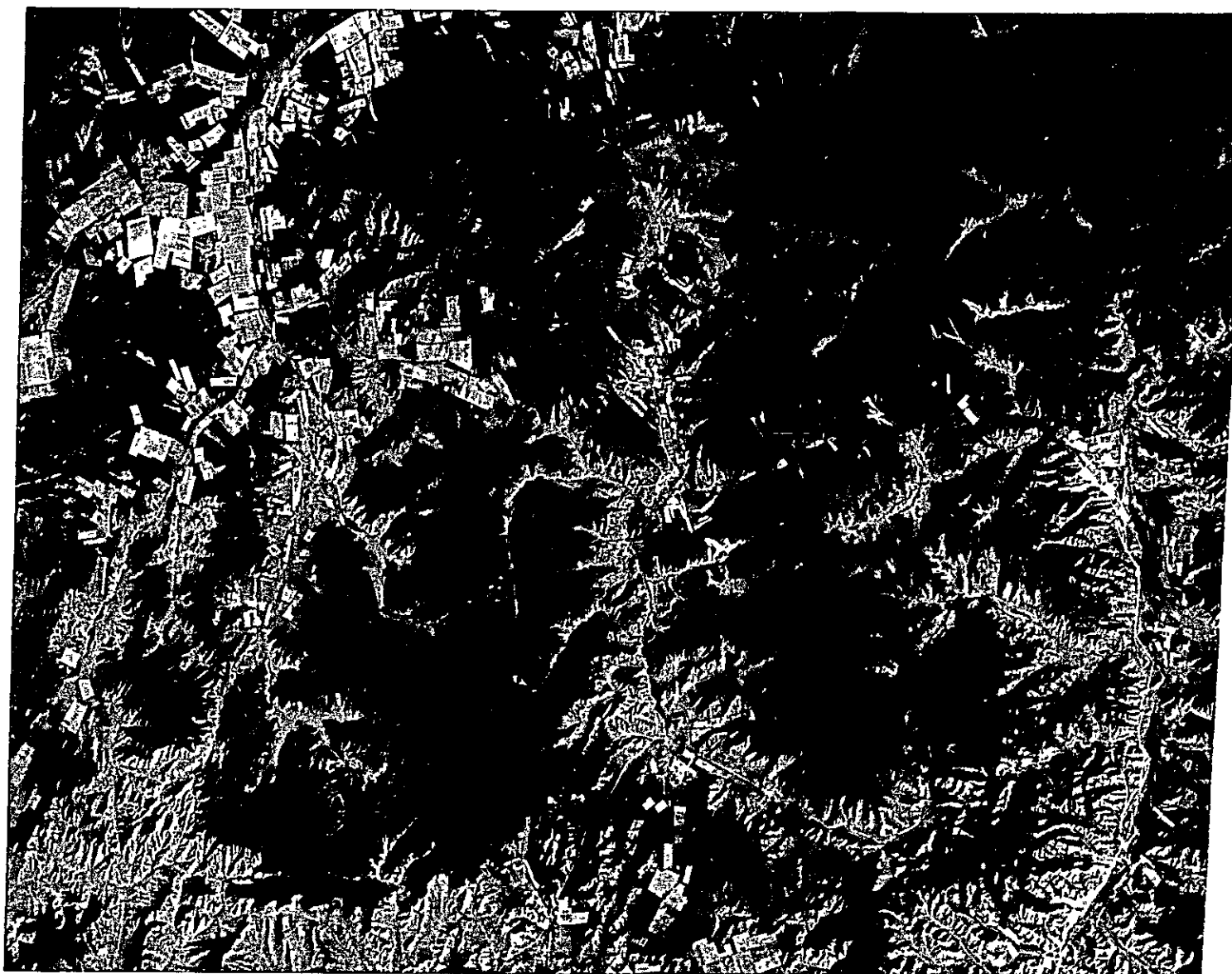


LANDSAT Image (Scene 133-26, Date: Sep. 17 '90)



Scale 1:250,000

10			1
11	7	4	2
12	8	5	3
	9	6	

Legend

- Pinus sibirica Forest
- Larix sibirica Forest
- Pinus sylvestris Forest
- Broad-leaved Forest
- Grassland
- Farm Land
- Settlement
- Open-air Mining
- Water Body

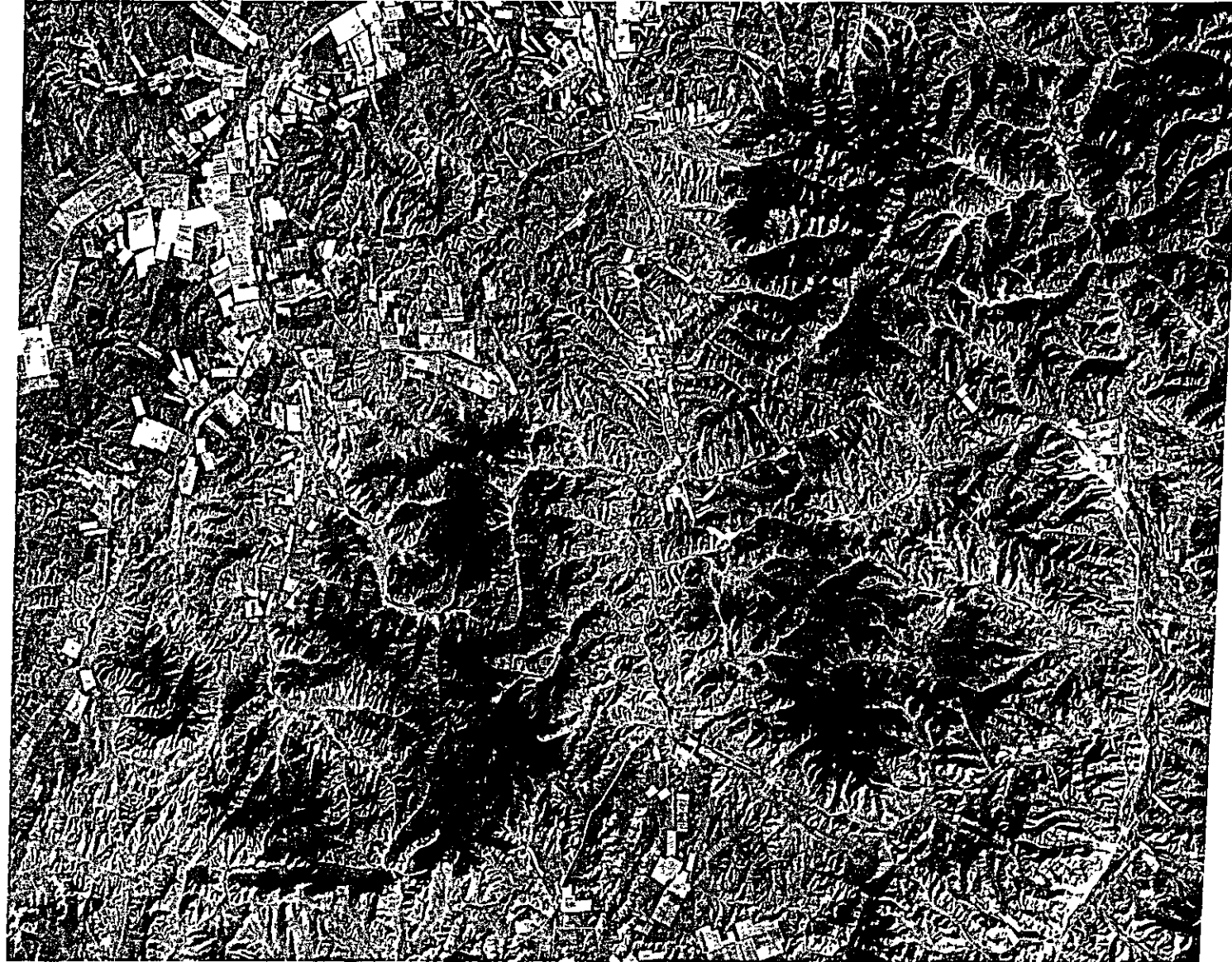
This map was completed in January, 1995 based on the interpretation of LANDSAT images shown on the following table

Path/Row	Date of Data Collection
130-28	Sep. 24 '89, Dec. 09 '89
131-29	Jun. 18 '91, Oct. 17 '91
132-26	Sep. 07 '89, Sep. 10 '90
132-25	Aug. 21 '89, May 12 '90
	Sep. 17 '90
132-24	Jun. 18 '89, Sep. 17 '90
133-25	Sep. 27 '89, Nov. 19 '90
133-24	Nov. 19 '90, Oct. 15 '91

1:886 (mirrored text)

The Forest Resources Management Study in Selenge Aimak, Mongolia

LANDSAT Image(scene 132-26-IV, date Sep.17'90)



0 5 10 km

Scale 1:250,000

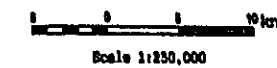
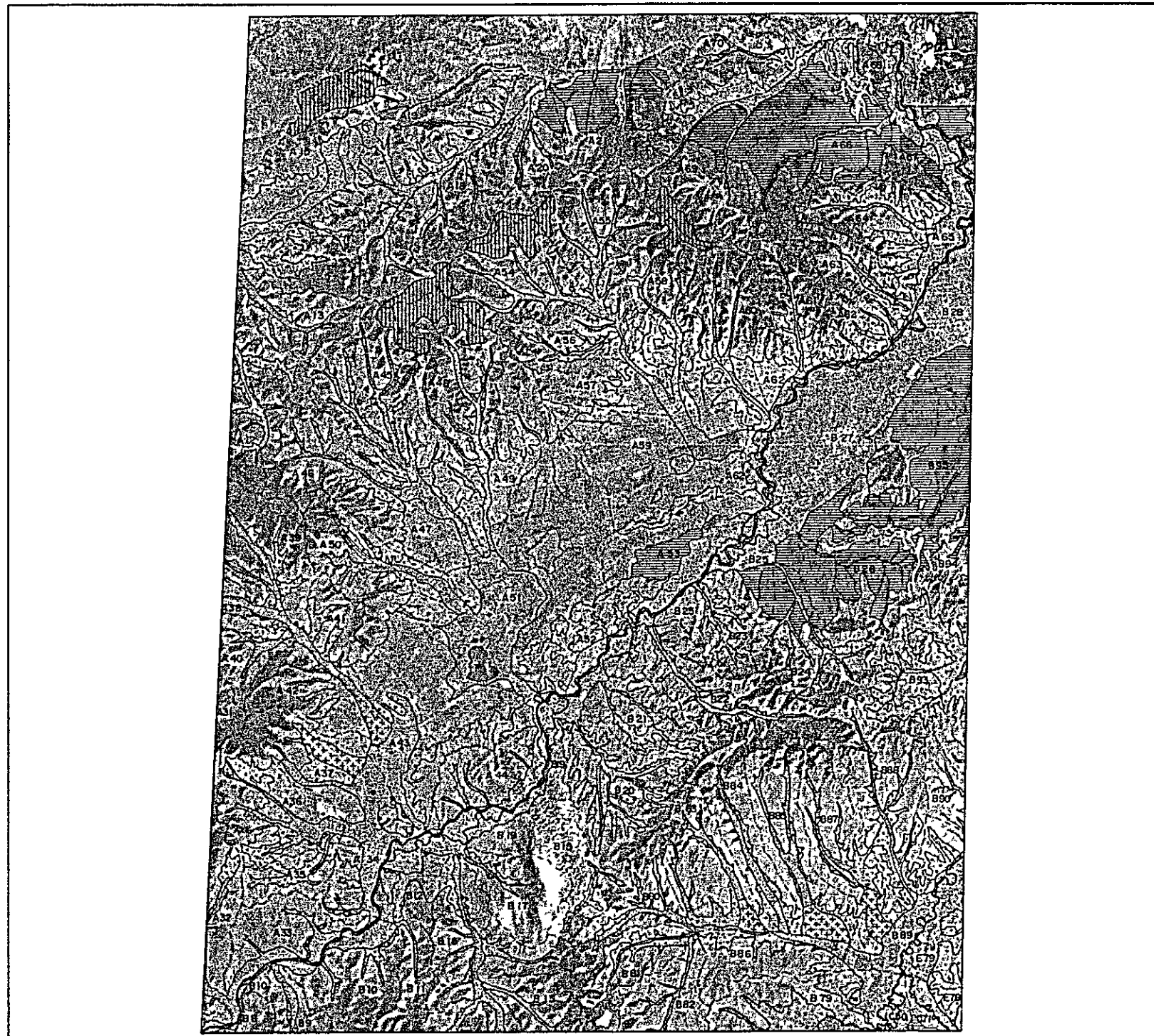
10			1
11	7	4	2
12	8	5	3
	9	6	

(mirrored text)

Research Institute of Forestry & Wildlife (RIFW)
Ministry of Nature and Environment, Mongolia

Japan International Cooperation Agency (JICA)
Japan Forest Technical Association (JAFTA)
Asia Air Survey Co., Ltd

LANDSAT Image (Cover Map 2) (Topography No. 7) '89



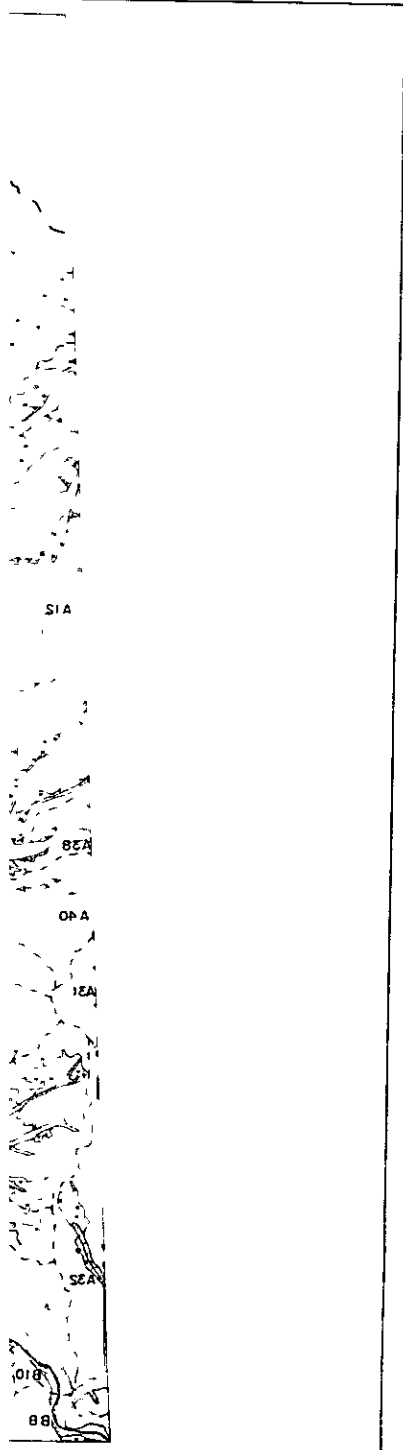
10				1
11	7	4		2
12	8	5		3
	9	6		

Legend

- Mountainous Forest
- Large Leaf Broad Forest of Summit
- Plateau/Tundra Forest
- Deciduous Forest
- Alluvial Fan
- Flood Plain
- Wetland
- Openair Mining
- Water Body Drainage Basin and its Number
- - - Boundary of Selenge Aimek

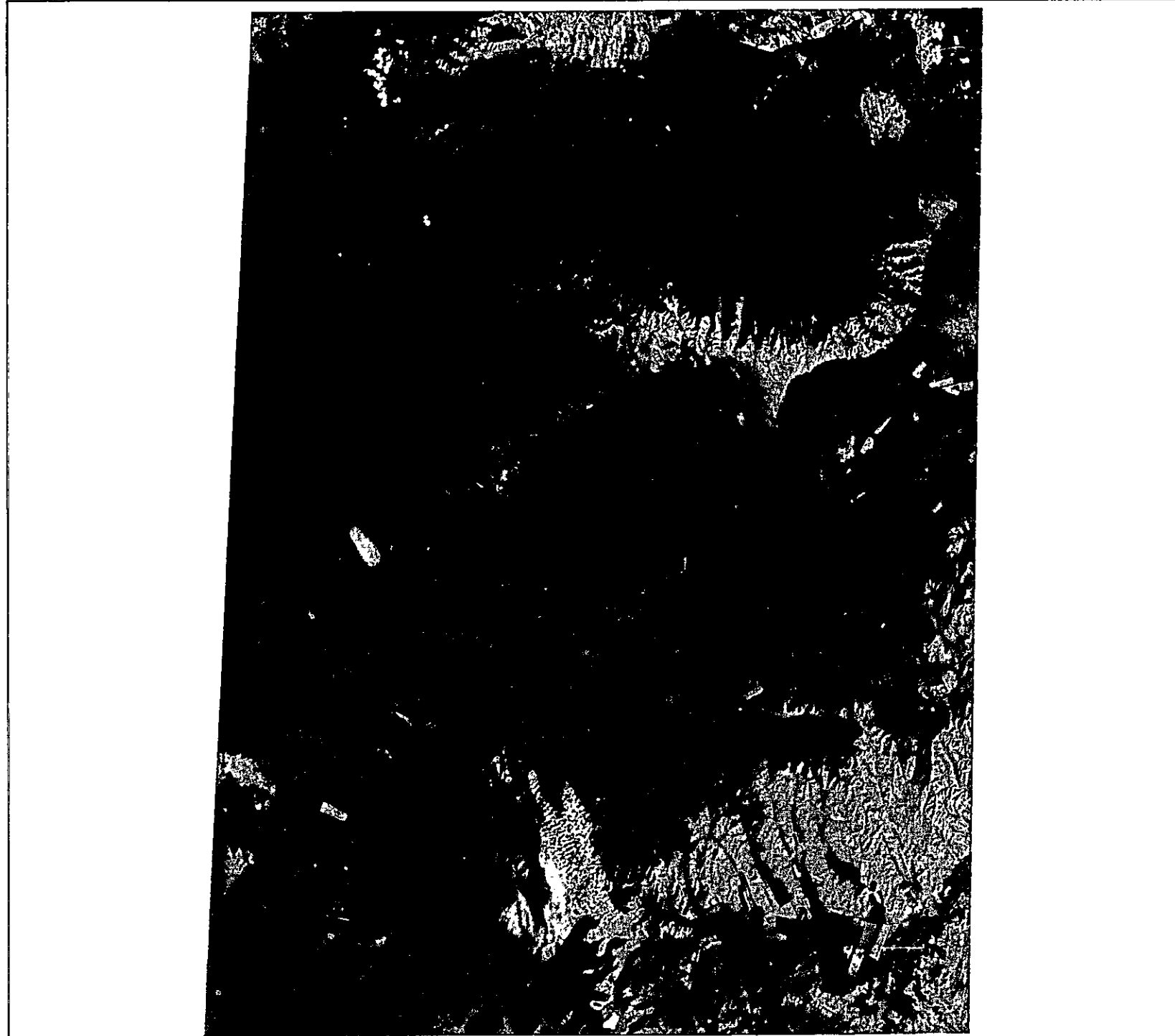
This map was completed in January, 1990 based on the interpretation of LANDSAT images shown on the following table

Path/Row	Date of Data Collection
120-71	Jan. 21 '89, Dec. 29 '89
121-71	Jan. 19 '89, Oct. 17 '89
122-71	Jan. 27 '89, Nov. 19 '89
123-71	Jan. 21 '89, May 11 '89, Nov. 11 '89
124-71	Jan. 18 '89, Sep. 17 '89
125-71	Jan. 22 '89, Nov. 19 '89
126-71	Jan. 19 '89, Oct. 13 '89



Research Institute of Forestry & Wildlife (RIFW)
Ministry of Nature and Environment, Mongolia

LANDSAT Image (Scene 132-25, Vegetation Aug. 7, '89)

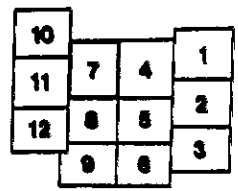


Research Institute of Forestry & Wildlife (RIFW)
Ministry of Nature and Environment, Mongolia

Japan International Cooperation Agency (JICA)
Japan Forest Technical Association (JFTA)
Asia Air Survey Co., Ltd.



Scale 1:200,000



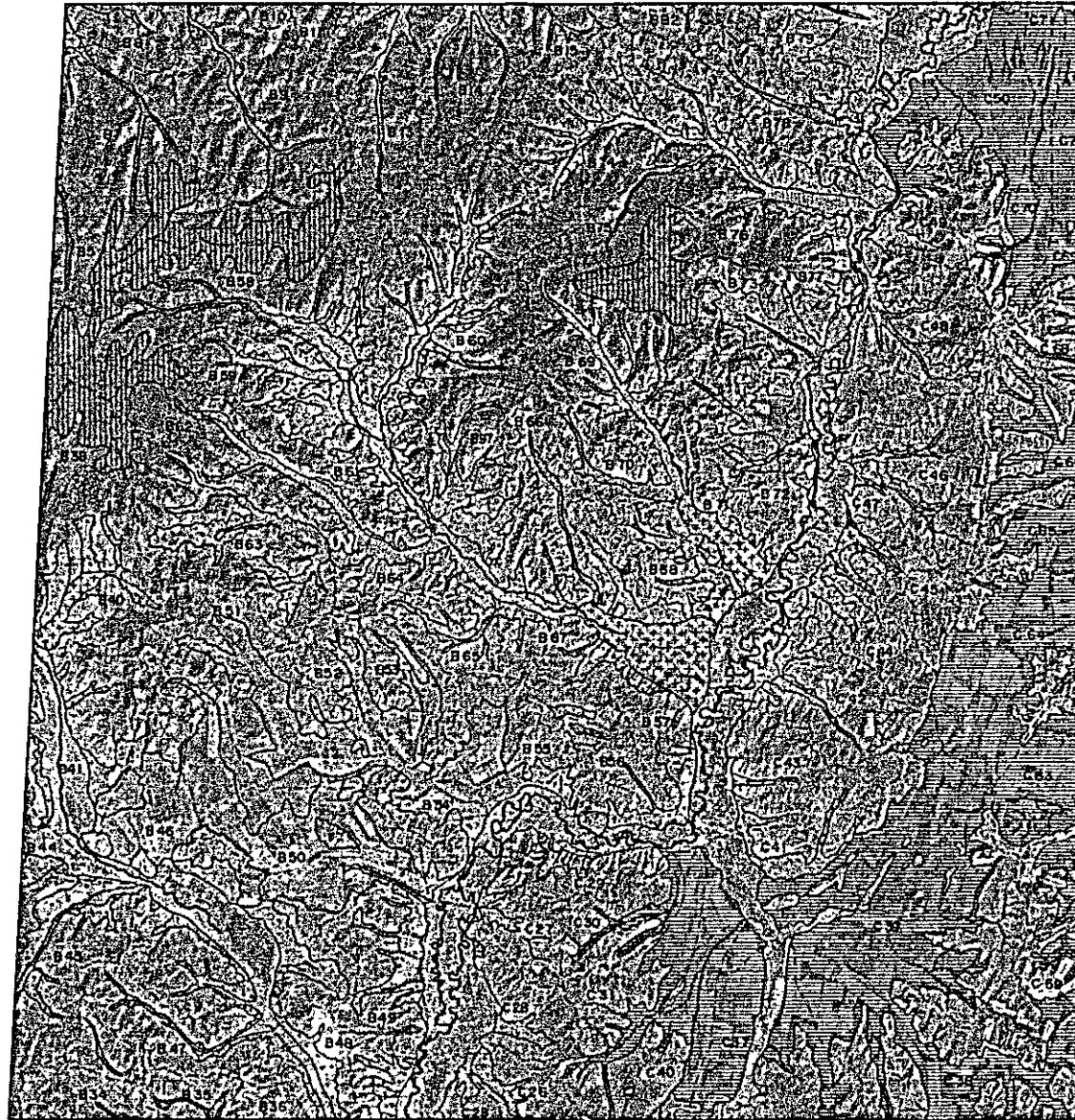
Legend

- Pinus sibirica* Forest
- Larix sibirica* Forest
- Pinus sylvestris* Forest
- Broad-leaved Forest
- Grassland
- Pasture Land
- Settlement
- Open-air Mining
- Water Body

This map was completed in January, 1995 based on the interpretation of LANDSAT images shown on the following table

Path-Row	Date of Data Collection
132-26	Jan. 24 '88, Sep. 05 '89
132-25	Jan. 19 '91, Oct. 17 '92
132-26	Jan. 07 '93, Sep. 28 '93
132-25	Aug. 21 '94, May 11 '95
	May 17 '96
132-26	Jan. 17 '98, Sep. 17 '98
132-25	Jan. 29 '98, Nov. 19 '98
132-26	Nov. 11 '98, Oct. 11 '99

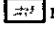

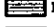
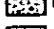
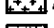
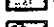


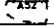
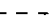
LANDSAT Image (Cover Map (Vegetation No. 8) '90)



0 5 10 km
Scale 1:250,000

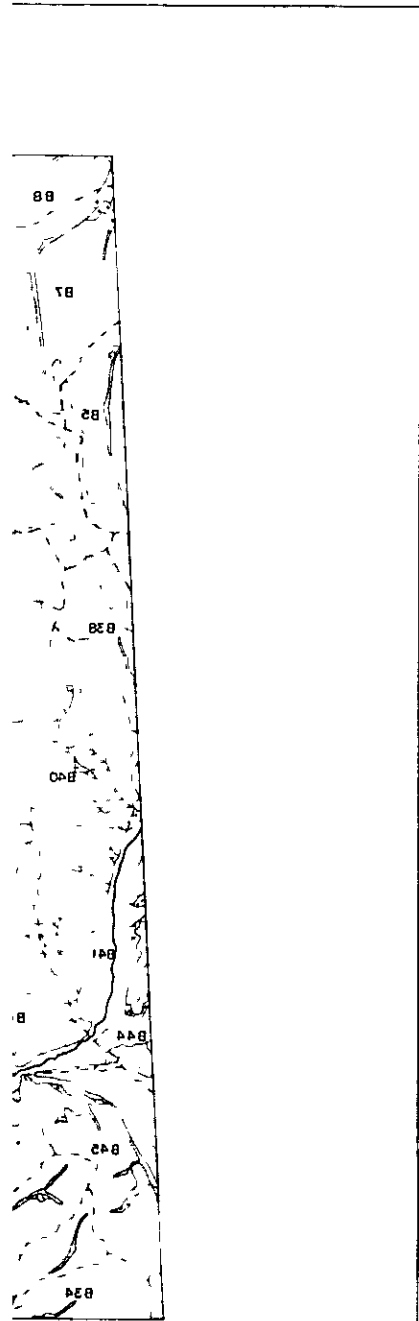
10			1
11	7	4	2
12	8	5	3
	9	6	

Legend

-  Khinkh-in-khiltz Forest
-  Low-to-Mid/Summit Forest
-  Plateau/Thicket Forest
-  Dabkh-lakh-olj Forest
-  Khimakh-Fan
-  Floodplain
-  Water Body
-  Openair Mining
-  Water Body (Drainage Basin and its Number)
-  Boundary of Selenge Aimak

This map was completed in January, 1995 based on the interpretation of LANDSAT images shown in the following table

Path-Row	Date of Data Collection
120-26	Jan. 24 '90, Dec. 05 '89
121-29	Jan. 16 '91, Oct. 17 '91
121-28	Jan. 27 '89, Sep. 18 '90
122-25	Aug. 21 '88, Nov. 11 '90, Nov. 27 '90
122-26	Jan. 16 '89, Sep. 17 '90
122-25	Jan. 27 '89, Nov. 11 '90
122-28	Nov. 17 '90, Oct. 13 '92



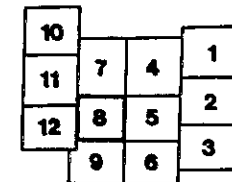
Research Institute of Forestry & Wildlife (RIFW)
Ministry of Nature and Environment, Mongolia

LANDSAT Image (Scene 132-26 Vegetation Sep. 17 '90)



0 5 10 km

Scale 1:250,000



Legend

- Pinus sibirica* Forest
- Larix sibirica* Forest
- Pinus sylvestris* Forest
- Broad-leaved Forest
- Grassland
- Farm Land
- Settlement
- Open-air Mining
- Water Body

This map was completed in January, 1993 based on the interpretation of LANDSAT images shown on the following table.

Image No.	Date of Data Collection
132-26	Jan. 21 '89, Dec. 05 '89
132-27	Jan. 16 '89, Oct. 17 '89
132-28	Aug. 07 '89, Sep. 10 '89
132-29	Aug. 21 '89, May 12 '90
	Sep. 17 '90
132-26	Jan. 18 '89, Sep. 17 '90
132-27	Dec. 29 '89, Nov. 10 '90
132-28	Dec. 19 '90, Oct. 15 '92

Research Institute of Forestry & Wildlife (RIFW)
Ministry of Nature and Environment, Mongolia

Japan International Cooperation Agency (JICA)
Japan Forest Technical Association (JAFTA)
Asia Air Survey Co., Ltd.

МОНГОЛ Улсын Газар Засаг Засаг захиргаагаар зохиогдсон зураг



МОНГОЛ Улсын Газар Засаг Засаг захиргаагаар зохиогдсон зураг
a MONGOLIAN map prepared by the State Geographical Institute

The Forest Resources Management Study in Selenge Aimag, Mongolia

LANDSAT Image (scene 132-26-I, date Sep.17'90)



5 0 5 10 km

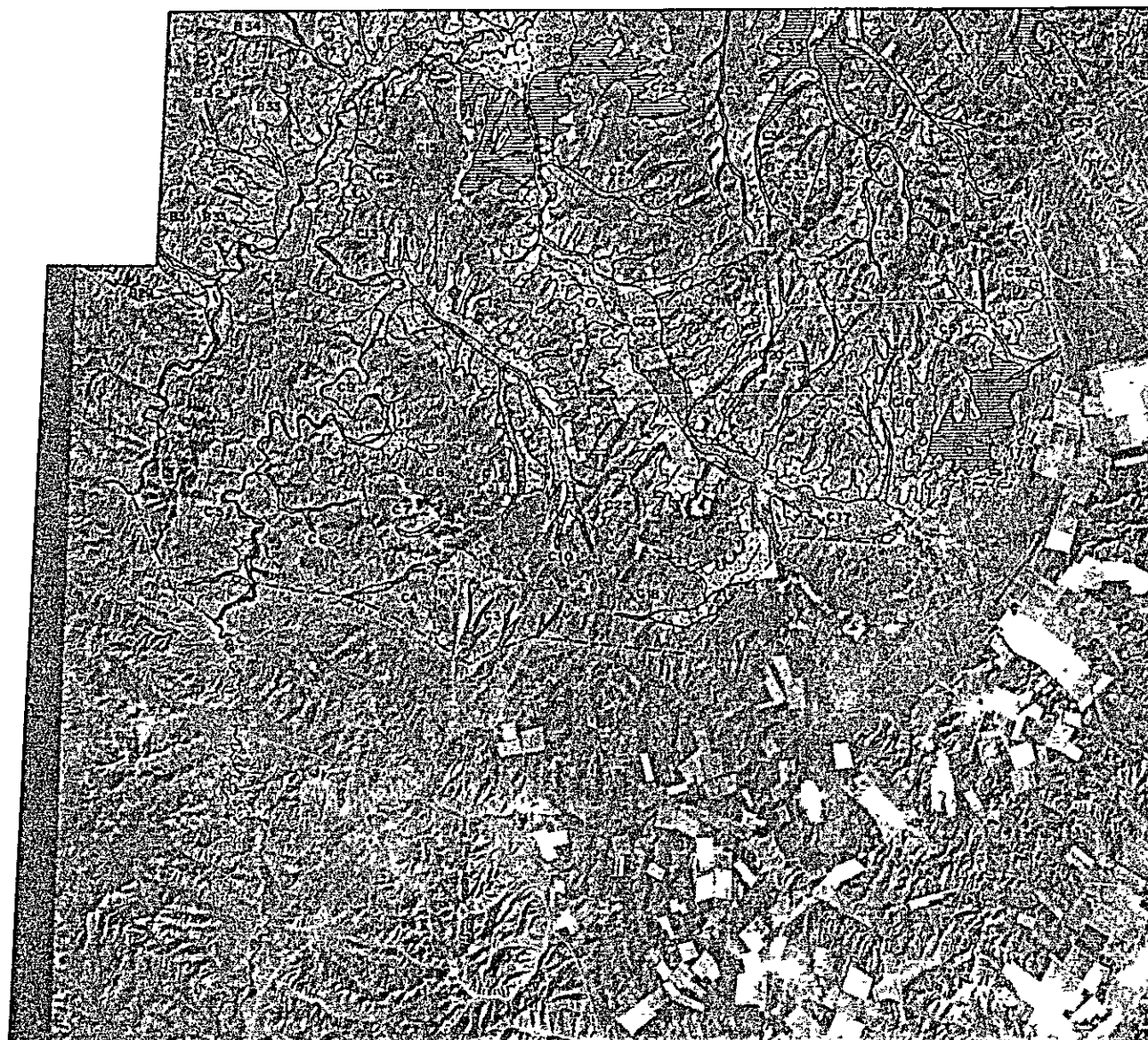
Scale 1:250,000

10			1
11	7	4	2
12	8	5	3
	9	6	

Research Institute of Forestry & Wildlife (RIFW)
Ministry of Nature and Environment, Mongolia

Japan International Cooperation Agency (JICA)
Japan Forest Technical Association (JAFTA)
Asia Air Survey Co., Ltd

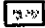



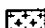
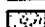
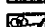
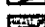

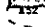

LANDSAT Image (Cover Map 2) (Photograph No. 97) '90



0 1 km
Scale 1:250,000

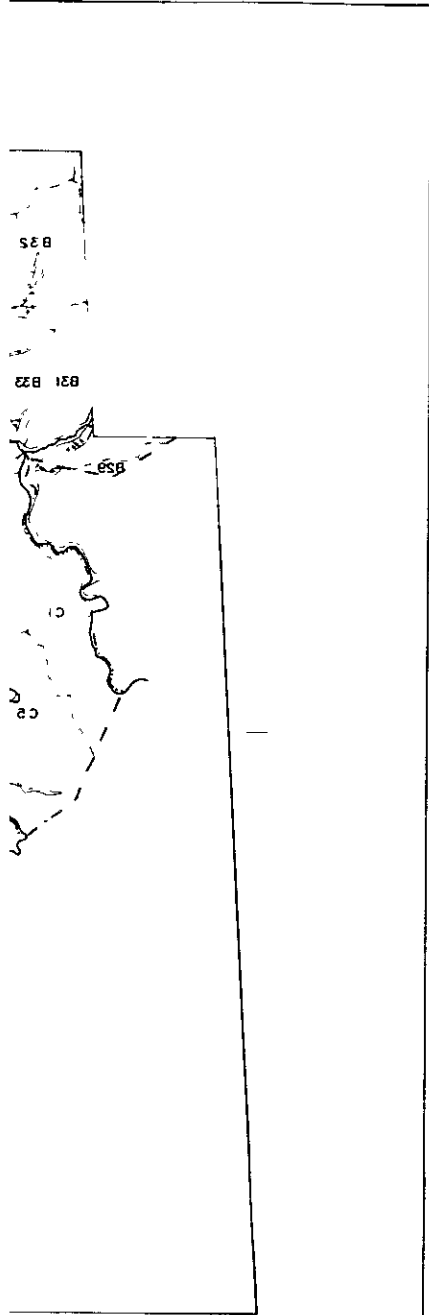
10			1
11	7	4	2
12	8	5	3
	9	6	

Legend

-  Khantsir Hills Forest
-  Ulaan Uul/Sur/Bogost of Summit
-  Ulaan Uul/Sur/Bogost Forest
-  Ulaan Uul/Sur/Bogost Forest
-  Khantsir Hills Forest
-  Plateau Forest
-  Watercourse
-  Openair Mining
-  Khantsir Hills Forest
-  Ulaan Uul/Sur/Bogost of Summit
-  Boundary of Selenge Aimag

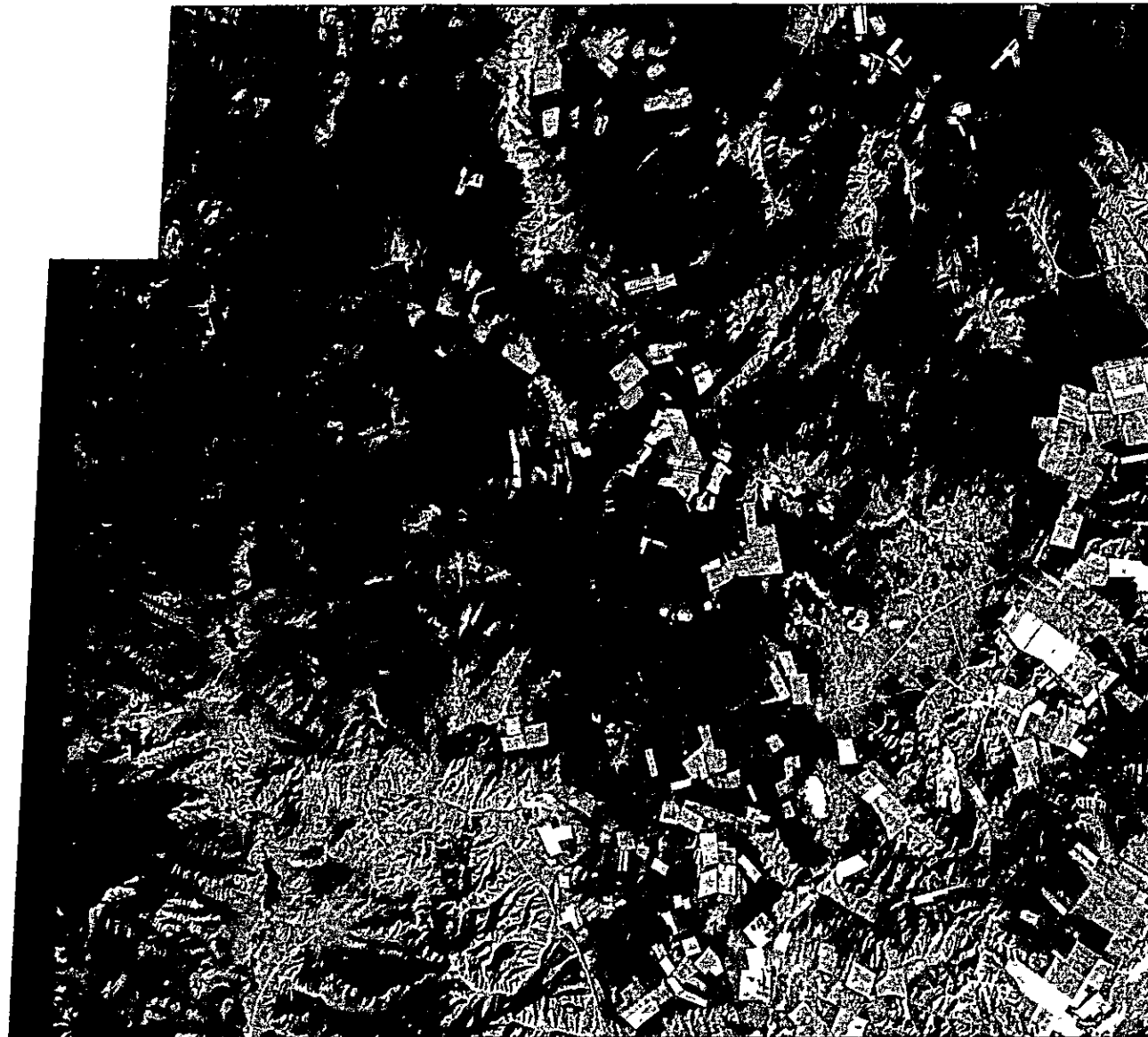
This map was completed in January, 1995 based on the interpretation of LANDSAT images shown in the following table

Path-Row	Date of Data Collection
123-26	Apr. 24 '79, Apr. 25 '79
123-25	Apr. 18 '79, Apr. 17 '79
123-26	Apr. 27 '79, Apr. 18 '79
123-25	Apr. 21 '79, Apr. 12 '79
123-26	Apr. 18 '79, Apr. 17 '79
123-25	Apr. 28 '79, Apr. 18 '79
123-26	Apr. 19 '79, Oct. 15 '79



Research Institute of Forestry & Wildlife (RIFW)
Ministry of Nature and Environment, Mongolia

LANDSAT Image (Scene No. 132-25, Date: Sep. 17 '90)



Research Institute of Forestry & Wildlife (RIFW)
Ministry of Nature and Environment, Mongolia

Japan International Cooperation Agency (JICA)
Japan Forest Technical Association (JAMTA)
Asia Air Survey Co., Ltd.



Scale 1:250,000

10			1
11	7	4	2
12	8	5	3
	9	6	

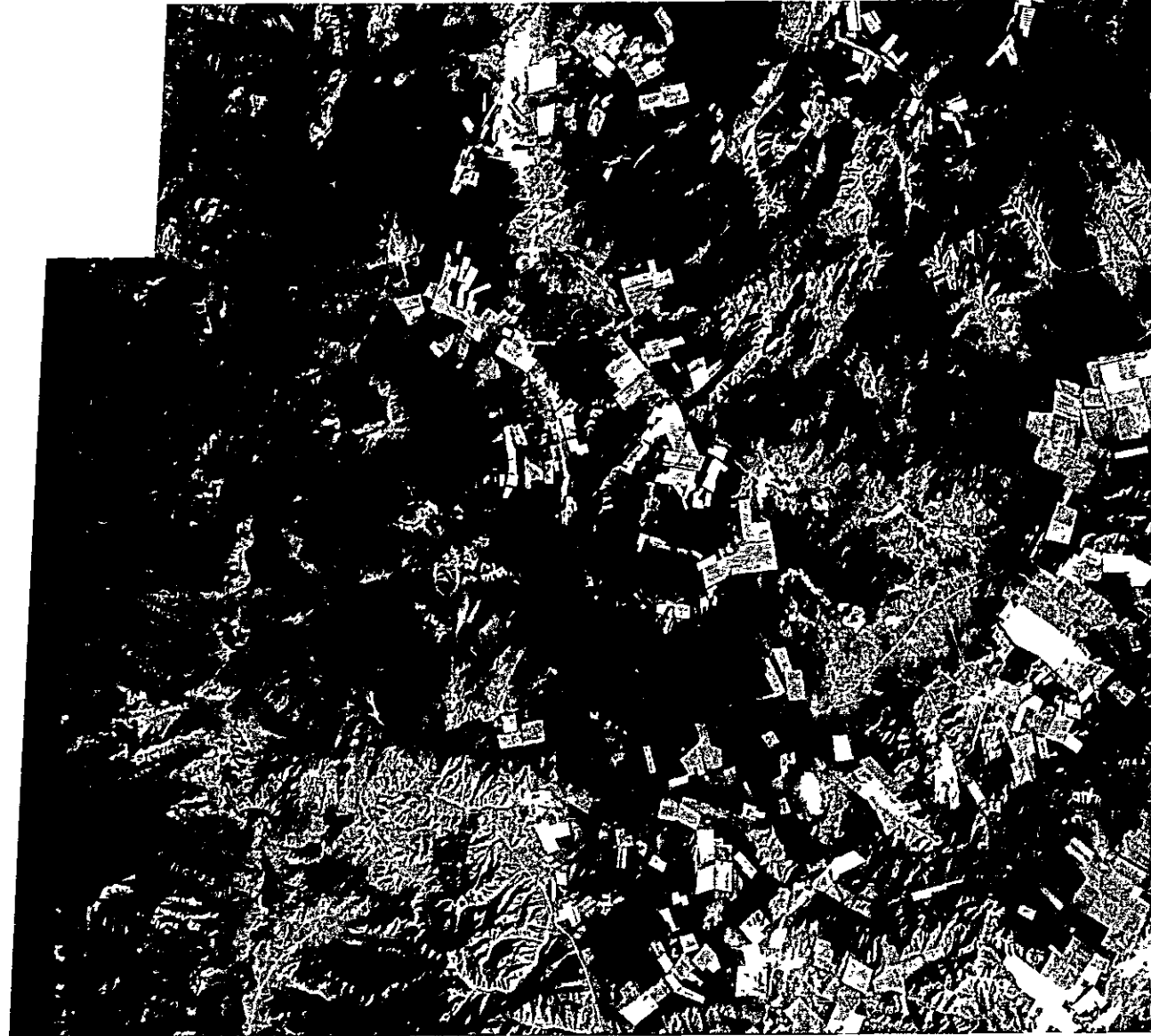
Legend

- Pinus sibirica* Forest
- Larix sibirica* Forest
- Pinus sylvestris* Forest
- Broad-leaved Forest
- Grassland
- Farm Land
- Settlement
- Open-air Mining
- Water Body

This map was completed in January, 1995
based on the interpretation of LANDSAT
images shown on the following table.

Scene No.	Date of Data Collection
132-26	Sep. 24 '90, Sep. 29 '90
132-25	Aug. 19 '90, Oct. 11 '90
132-26	Sep. 07 '90, Sep. 10 '90
132-25	Aug. 21 '90, Sep. 12 '90
	Sep. 17 '90
132-26	Aug. 18 '90, Sep. 17 '90
132-25	Sep. 21 '90, Sep. 19 '90
132-26	Nov. 11 '90, Oct. 15 '91

LANDSAT Image(scene 132-26-III, date Sep.17'90)



0 5 10 km

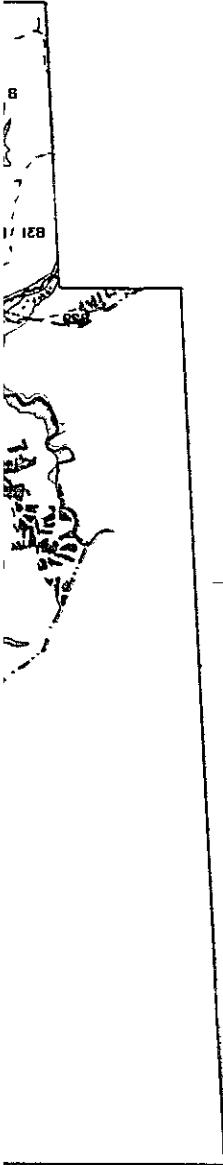
Scale 1:250,000

10			1
11	7	4	2
12	8	5	3
	9	6	

Research Institute of Forestry & Wildlife (RIFW)
Ministry of Nature and Environment, Mongolia

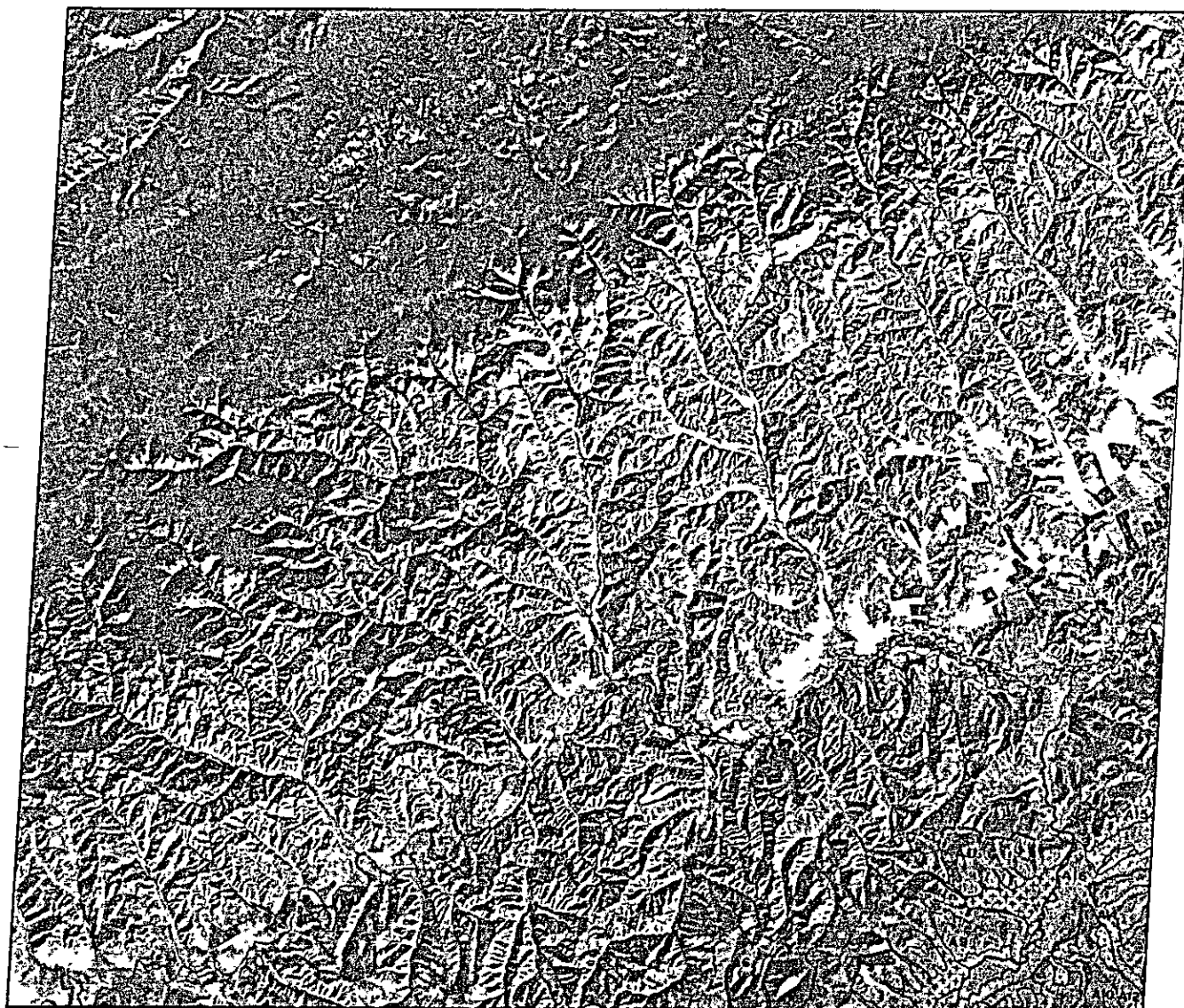
Japan International Cooperation Agency (JICA)
Japan Forest Technical Association (JAPFA)
Asia Air Survey Co., Ltd

... ..



... ..

LANDSAT Image (Cover Map 2 (Photograph No. 20) 89)



Scale 1:250,000

10			
11	7	4	1
12	8	5	2
	9	6	3

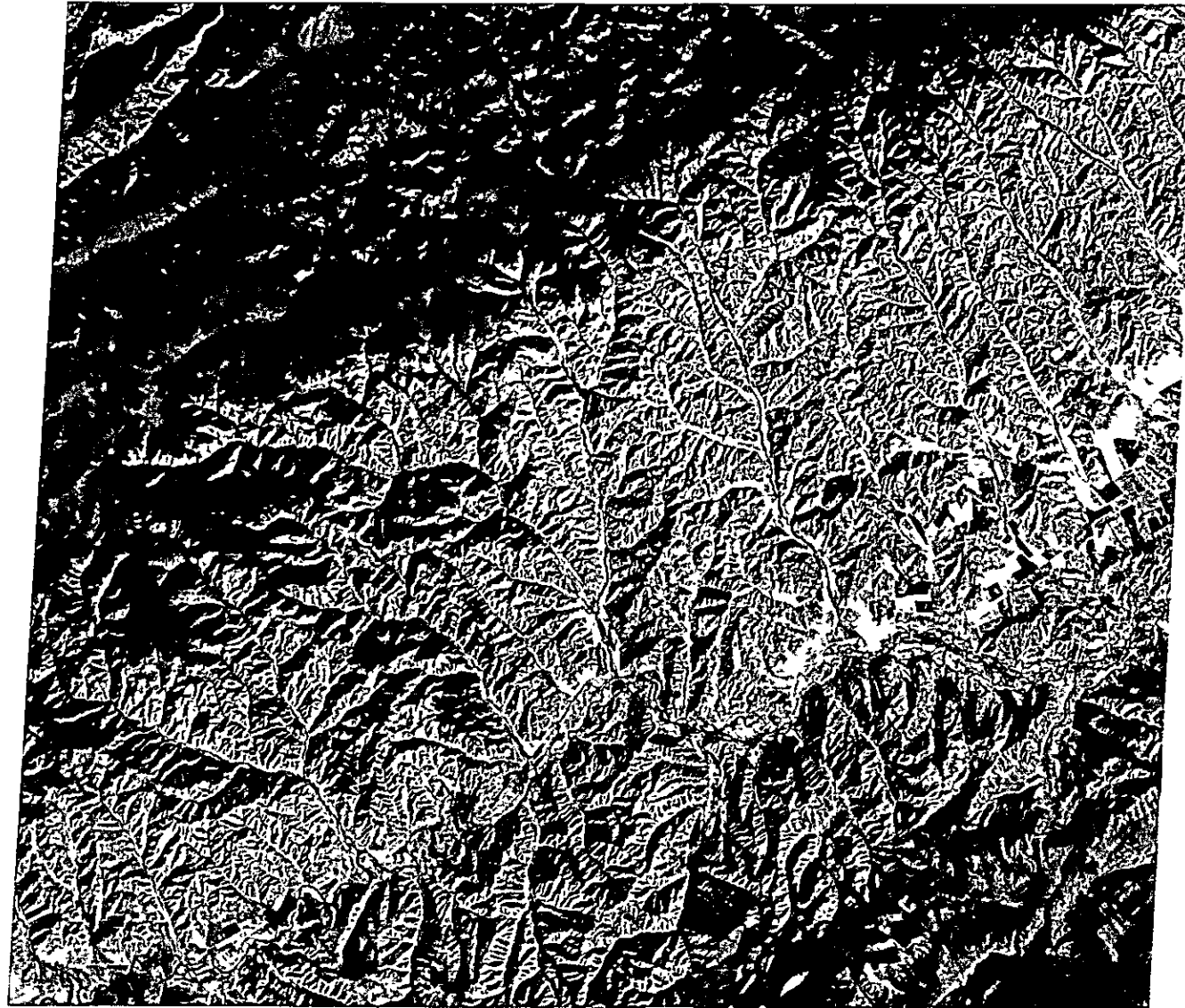
Legend

- Munkhkhudui Forest
- Low-to-Mid Slope Forest of Summit
- Ulaanuyurtov's Forest
- Dakhivishvoh Forest
- Shuvshvoh Forest
- Floodplain
- Water Body
- Openair Mining
- Water Body and its Number
- Boundary of Selenge Aimaq

This map was completed in January, 1995 based on the interpretation of LANDSAT images shown on the following table

Path/Row	Date of Data Collection
122-25	Aug. 24 '89, Dec. 05 '91
121-25	Jan. 18 '91, Oct. 17 '91
121-26	Aug. 07 '89, Dec. 18 '90
122-25	Aug. 23 '89, May 12 '90, Sep. 17 '90
122-26	Jan. 18 '89, Sep. 17 '90
122-27	Dec. 28 '89, Mar. 18 '90
122-28	Nov. 18 '90, Oct. 11 '91

LANDSAT Image (Scene No. 133-25 Vegetation Sep. 29 '89)



Scale 1:250,000

10			
11	7	4	1
12	8	5	2
	9	6	3

Legend

- Pinus sibirica Forest
- Larix sibirica Forest
- Pinus sylvestris Forest
- Broad-leaved Forest
- Grassland
- Fallow Land
- Settlement
- Open-air Mining
- Water Body

This map was completed in January, 1990 based on the interpretation of LANDSAT images shown on the following table

Scene No.	Date of Data Collection
133-25	Aug. 21 '89, Sep. 02 '89
133-25	Aug. 18 '89, Oct. 11 '89
133-25	Aug. 07 '89, Sep. 10 '89
133-25	Aug. 21 '89, Sep. 11 '89
133-25	Aug. 17 '89
133-25	Aug. 12 '89, Sep. 17 '89
133-25	Aug. 22 '89, Sep. 18 '89
133-25	Aug. 19 '89, Oct. 11 '89

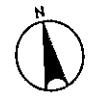
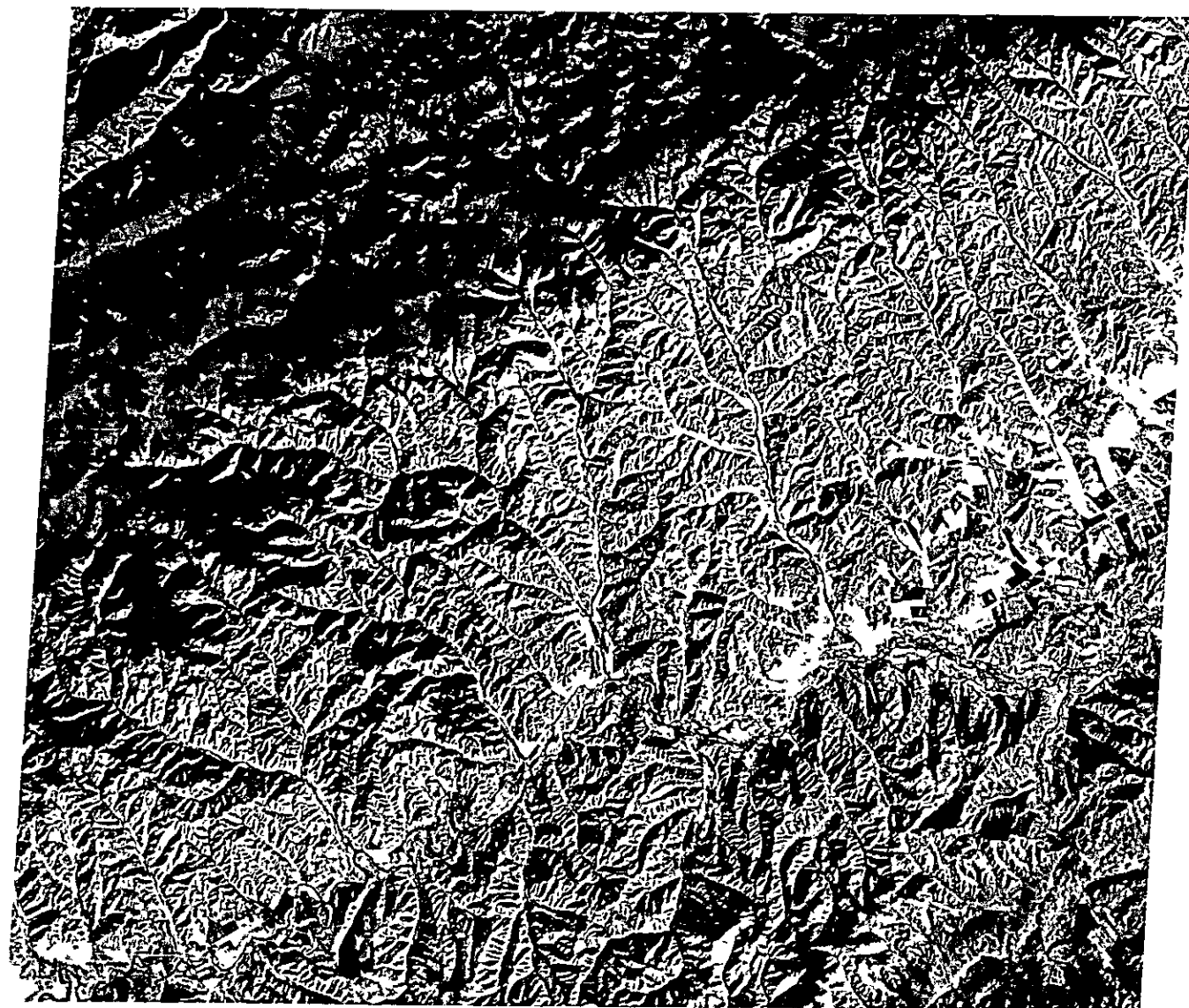
Research Institute of Forestry & Wildlife (RIFW)
Ministry of Nature and Environment, Mongolia

Japan International Cooperation Agency (JICA)
Japan Forest Technical Association (JAFTA)
Asia Air Survey Co., Ltd.

The Forest Resources Management Study in Selenge Aimag, Mongolia

Research Institute of Forestry & Wildlife (RIFW)
Ministry of Nature and Environment, Mongolia

LANDSAT Image(scene 133-25- II, date Sep.29'89)



Scale 1:250,000

10			1
11	7	4	2
12	8	5	3
	9	6	

The Forest Resources Management Study in Selenge Aimak, Mongolia

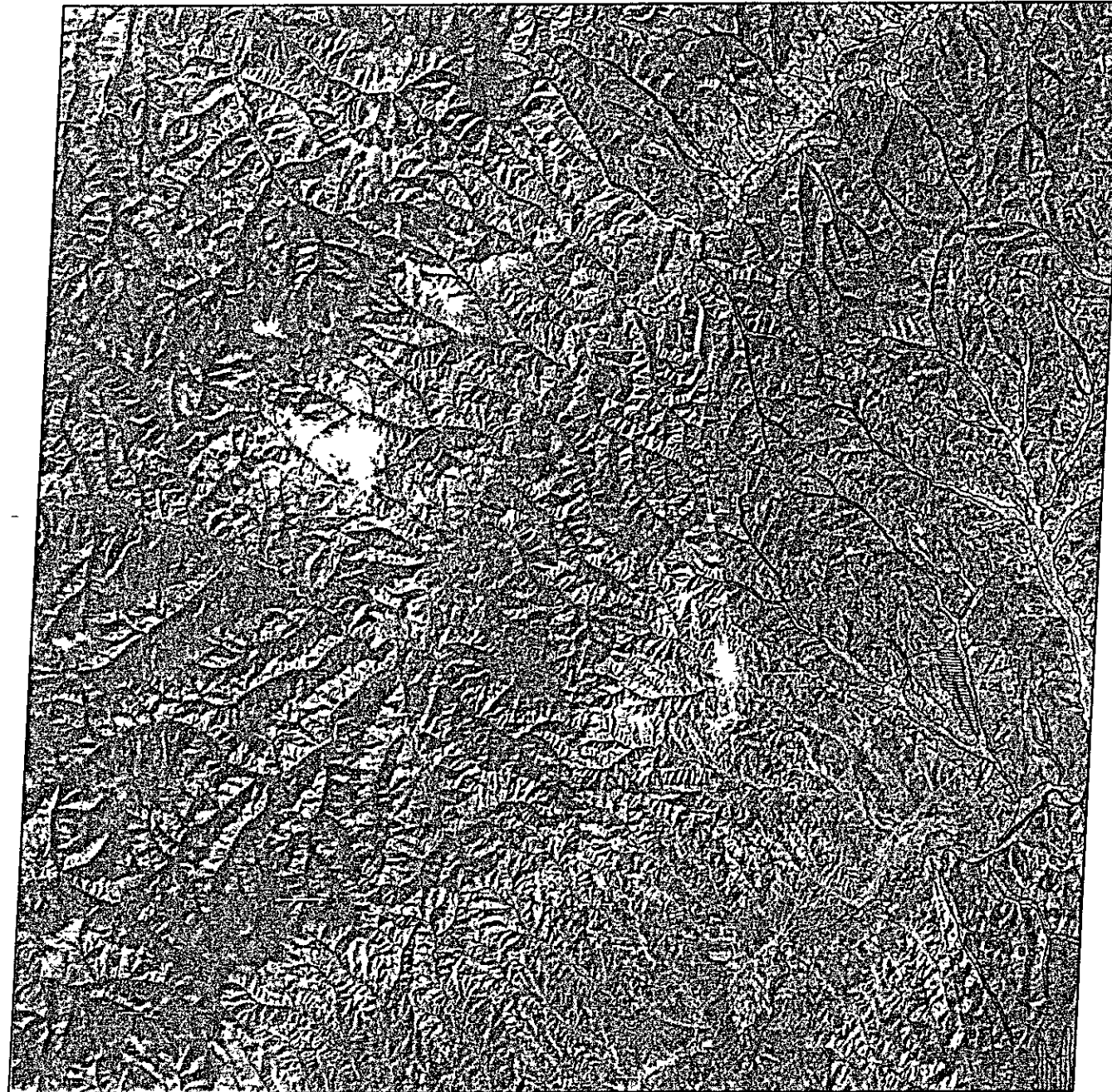
Research Institute of Forestry & Wildlife (RIFW)
Ministry of Nature and Environment, Mongolia

Japan International Cooperation Agency (JICA)
Japan Forest Technical Association (JAFTA)
Asia Air Survey Co., Ltd

Хийгэгдсэн гэрээний баримт бичгийн үндсэн дээр

Хийгэгдсэн гэрээний баримт бичгийн үндсэн дээр
Хийгэгдсэн гэрээний баримт бичгийн үндсэн дээр

LANDSAT Image (Cover Map - Topography No. 29) 89



Scale 1:250,000

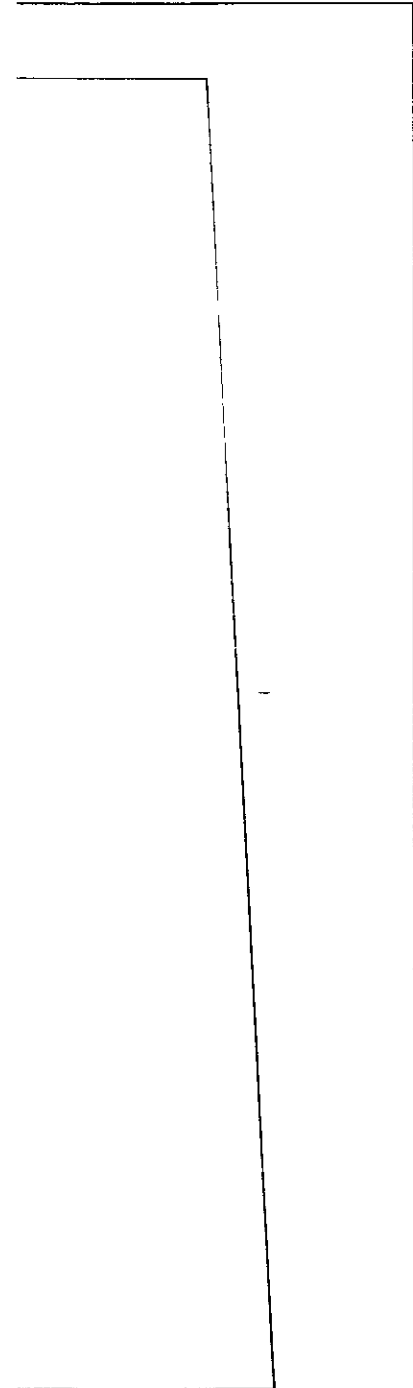
10			1
11	7	4	2
12	8	5	3
	9	6	

Legend

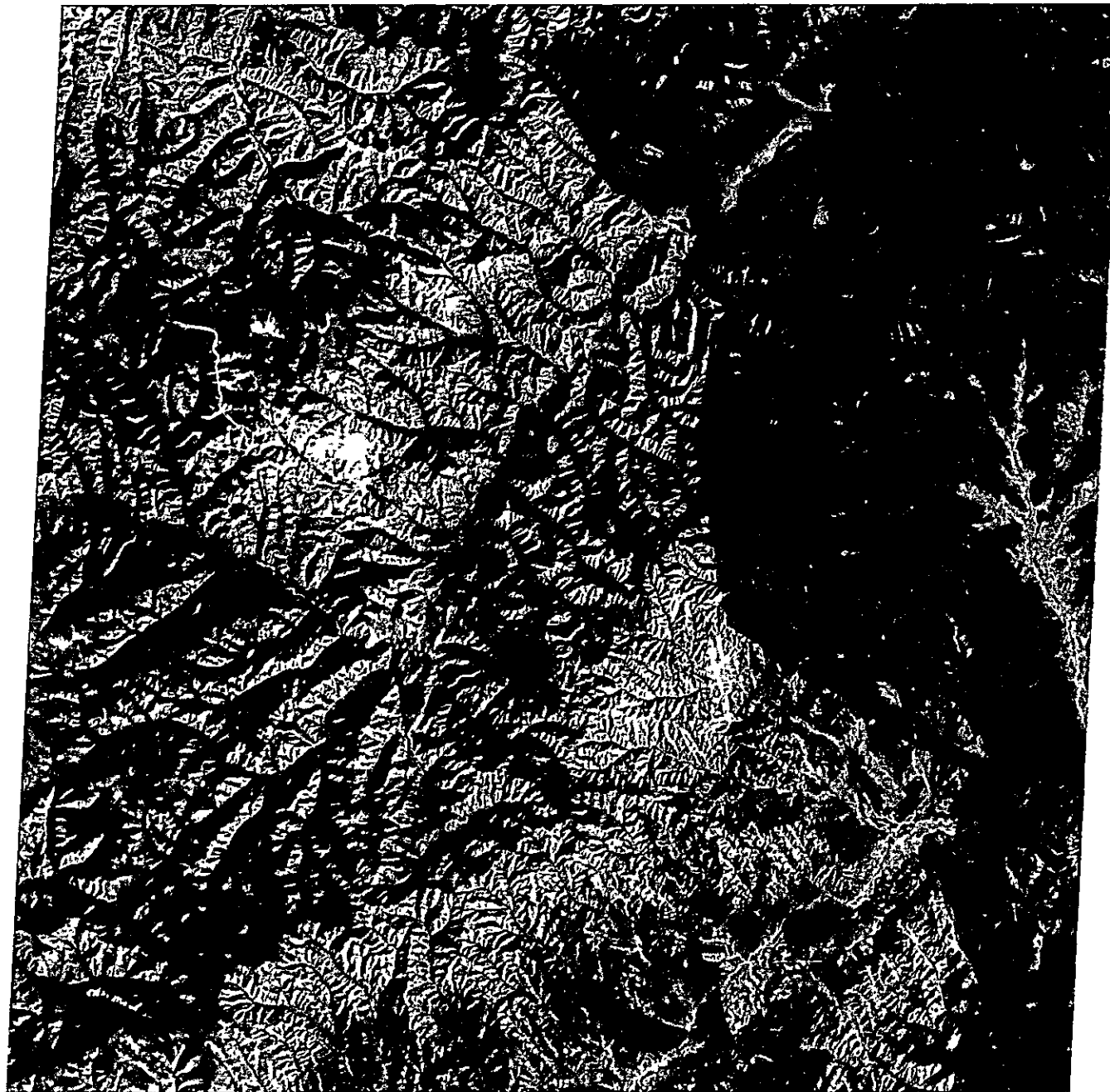
- Khantsir Hills Forest
- Low-to-Mid/Six Forest of Summit
- Datsnujiboo's Forest
- Dabidylak Forest
- Khaylakhan
- Wundurhin
- Waterbody
- Opliyair Mining
- Hinggo Basin and its Number
- Boundary of Selenge Aimak

This map was completed in January, 1995 based on the interpretation of LANDSAT images shown on the following table

Path-Row	Date of Data Collection
129-26	Aug. 24 '89, Dec. 05 '89
121-25	Jan. 18 '91, Oct. 17 '91
121-26	Aug. 07 '89, Sep. 10 '90
122-25	Aug. 21 '88, May 12 '90
	Sep. 17 '90
122-26	Jan. 14 '89, Sep. 17 '90
122-25	Aug. 29 '89, Nov. 18 '90
122-26	Nov. 19 '90, Oct. 15 '91



LANDSAT Image (Scene 132-25 Vegetation Sep. 29 '89)



Scale 1:250,000

10			1
11	7	4	2
12	8	5	3
	9	6	

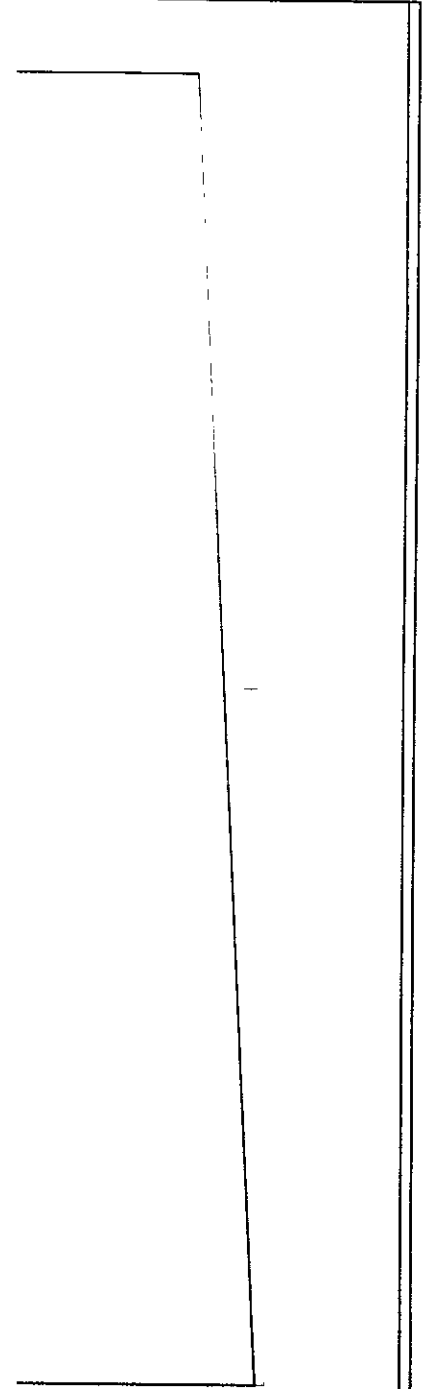
Legend

- Pinus sibirica* Forest
- Larix sibirica* Forest
- Pinus sylvestris* Forest
- Broad-leaved Forest
- Grassland
- Farm Land
- Settlement
- Open-air Mining
- Water Body

This map was completed in January, 1990 based on the interpretation of LANDSAT images shown on the following table.

Path/Row	Date of Data Collection
130-26	Jun. 24 '89, Sep. 08 '89
131-25	Jun. 18 '89, Oct. 17 '89
131-26	Jun. 07 '89, Sep. 18 '89
132-25	Aug. 21 '89, May 13 '90
	Sep. 17 '90
132-26	Jun. 18 '89, Sep. 17 '89
133-25	Jun. 22 '89, May 13 '90
132-26	Jun. 18 '89, Oct. 13 '89

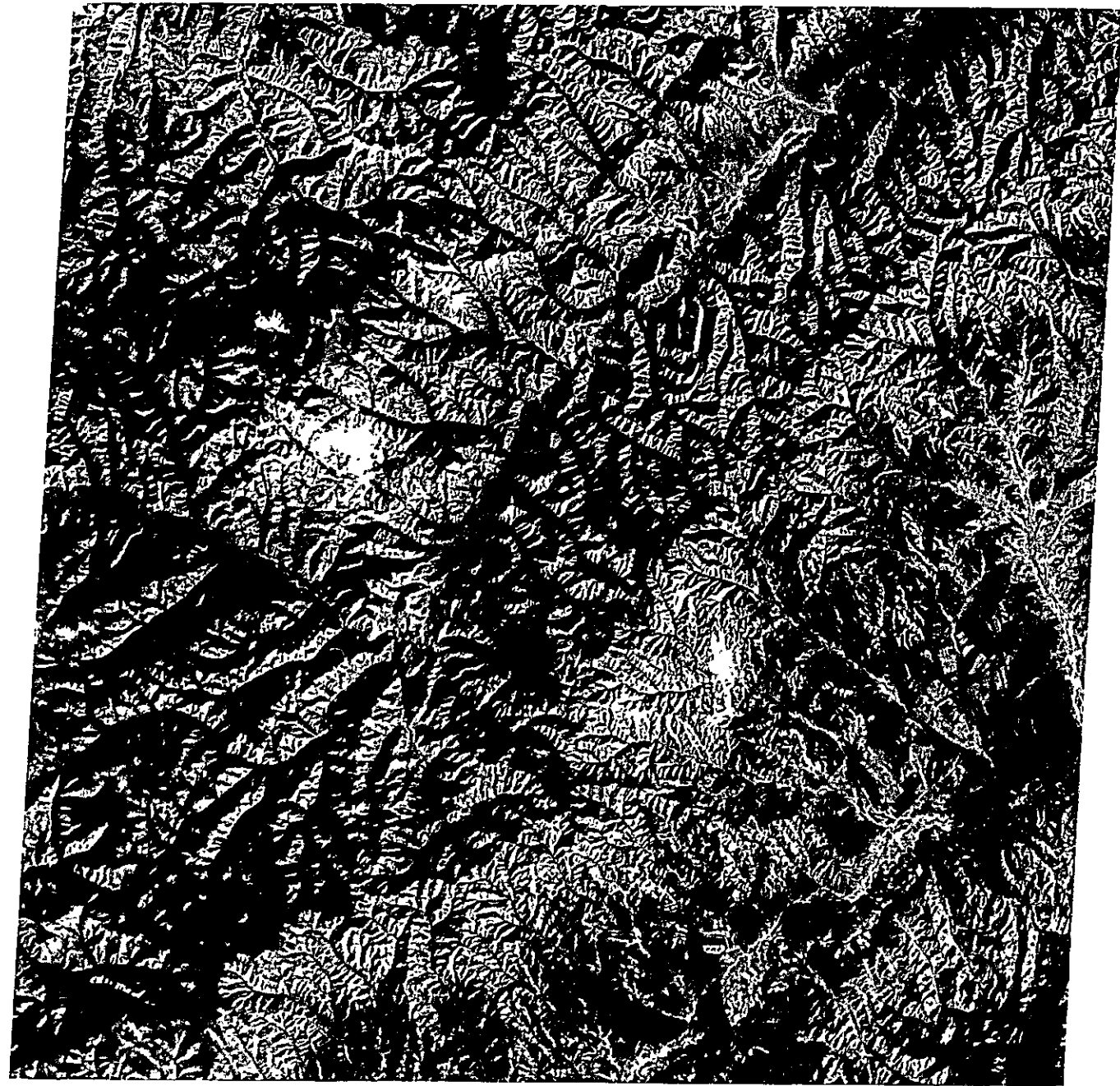
Хүнийгээс бусад амьтангийн үйлдвэрлэл, өсөлтийг судлахад зориулсан



МОНГОЛЫН Уулс, тэнгэр, ус, газрын байгалийн байгалийн байгууллага
Уулс, тэнгэр, ус, газрын байгалийн байгууллага

The Forest Resources Management Study in Selenge Aimag, Mongolia

LANDSAT Image(scene 133-25-IV, date Sep.29'89)



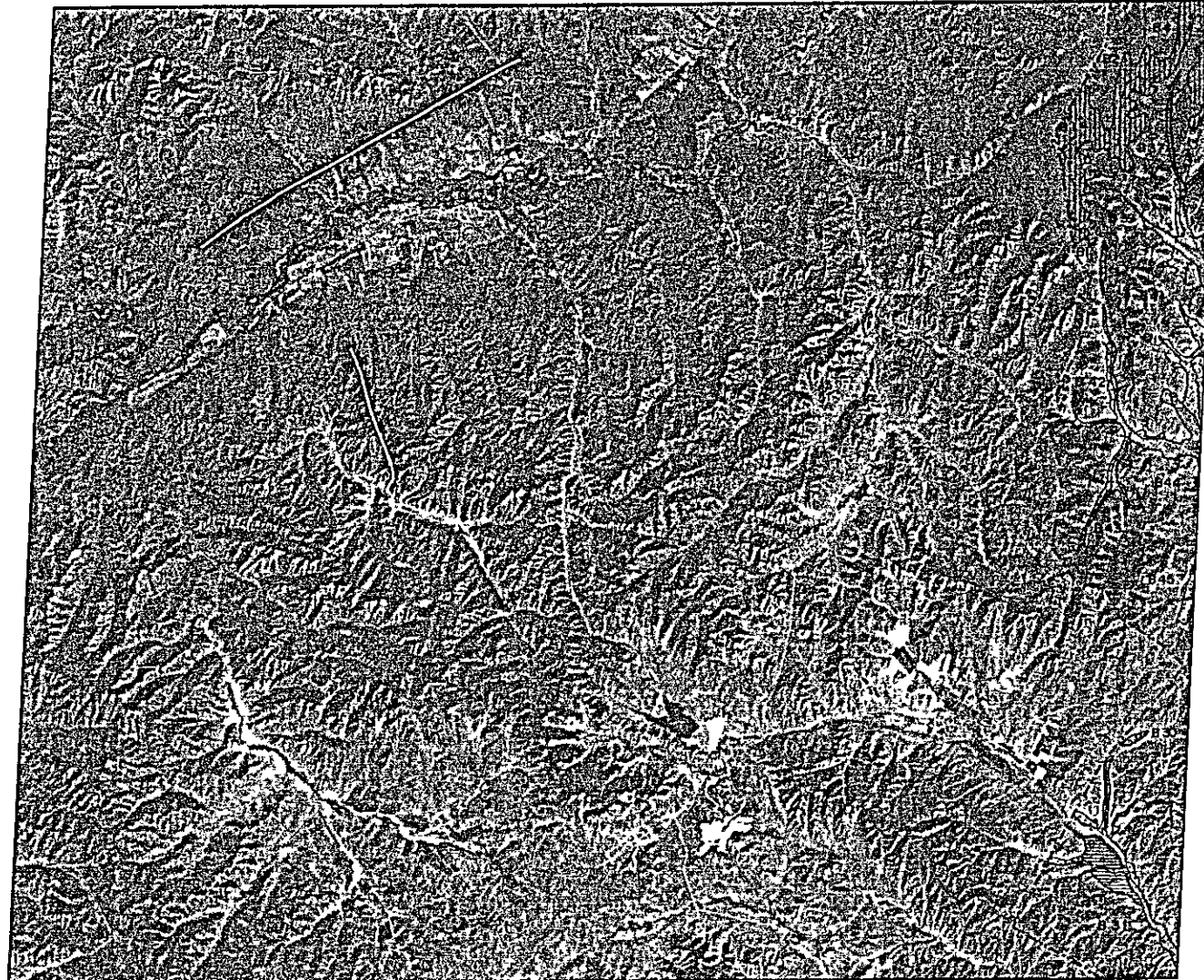
5 0 5 10 km
Scale 1:250,000

10				1
11	7	4		2
12	8	5		3
	9	6		

Research Institute of Forestry & Wildlife (RIFW)
Ministry of Nature and Environment, Mongolia

Japan International Cooperation Agency (JICA)
Japan Forest Technical Association (JFTA)
Asia Air Survey Co., Ltd

LANDSAT Image (Cover Map - Vegetation No. 12) 92)



Scale 1:250,000

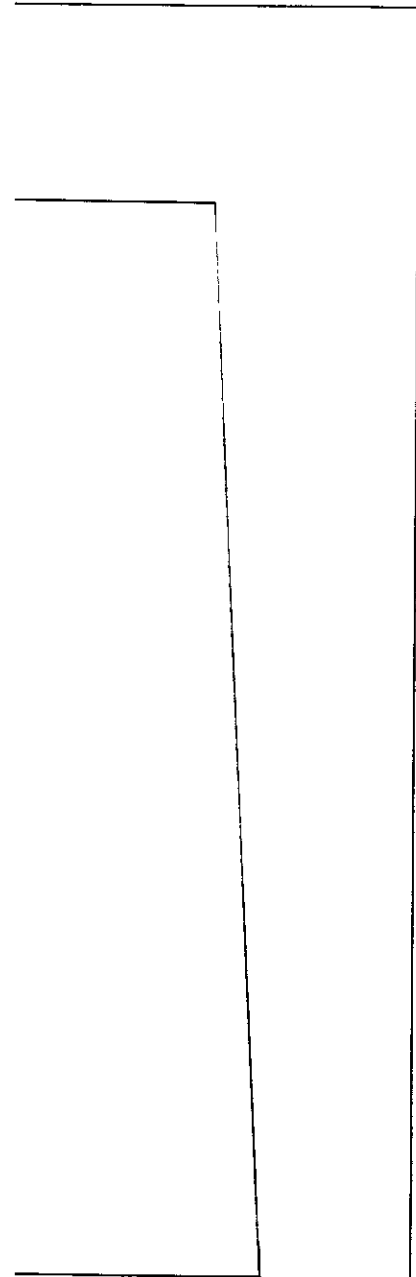
10			1
11	7	4	2
12	8	5	3
	9	6	

Legend

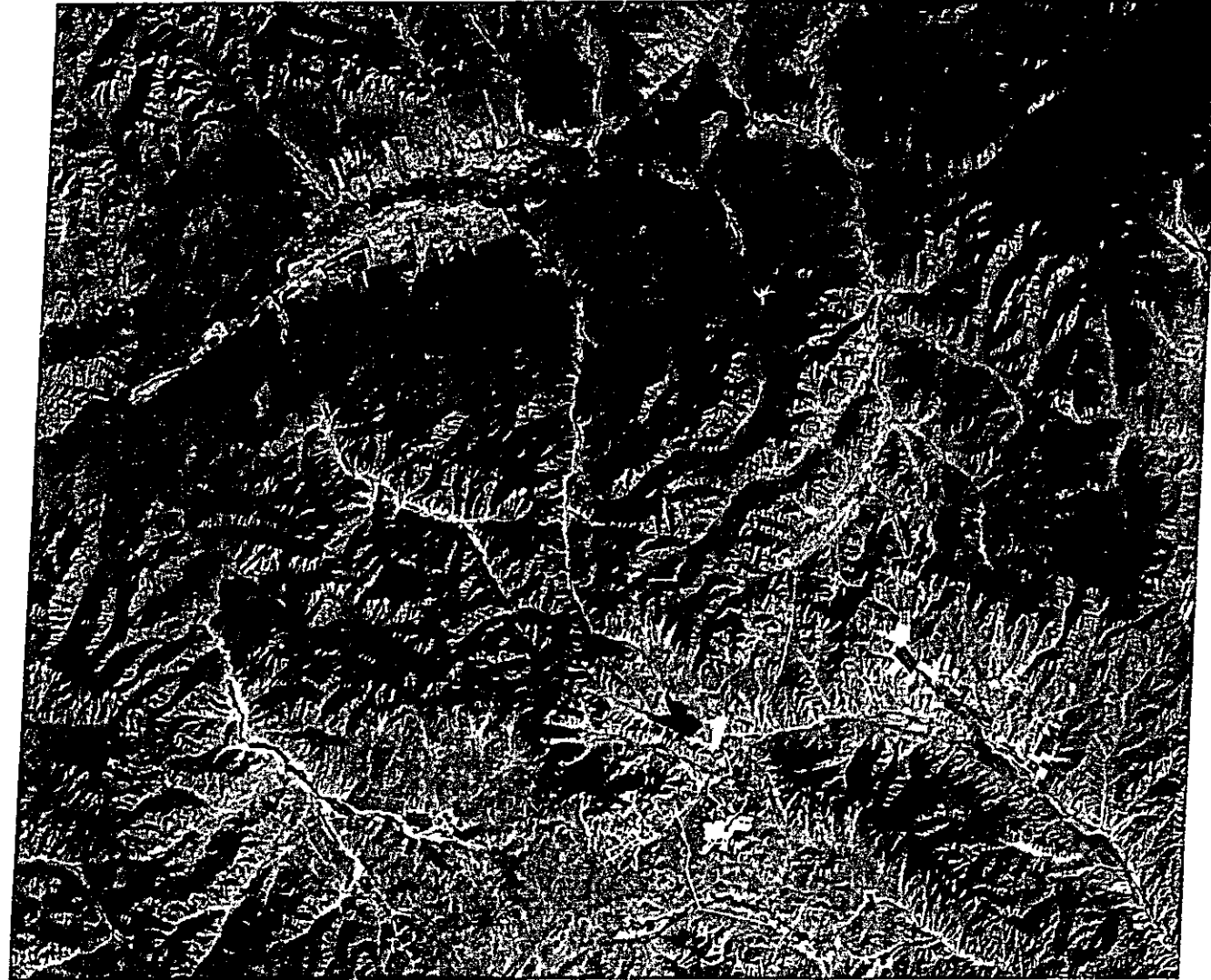
- Mountainous Forest
- Low-to-Mid Slope Forest of Summit
- Plateau/Chimney's Forest
- Oak-bark Forest
- Khimulak Forest
- Khondokhin Forest
- Water Body
- Open-air Mining
- Water Body and its Number
- Boundary of Selenge Aimak

This map was compiled in January, 1985 based on the interpretation of LANDSAT images shown on the following table

Image No.	Date of Data Collection
120-24	Dec. 24 '89, Dec. 25 '89
121-25	Jan. 15 '90, Oct. 17 '89
121-26	Dec. 27 '89, Sep. 19 '89
122-25	Aug. 21 '89, Sep. 12 '89
	Nov. 17 '89
122-26	Jan. 13 '90, Sep. 17 '89
123-25	Dec. 21 '89, Nov. 19 '89
123-26	Nov. 19 '89, Oct. 13 '89



LANDSAT Image (Cover Map - Vegetation) (06.12.92)



Scale 1:250,000

10			1
11	7	4	2
12	8	5	3
	9	6	

Legend

- Pinus sibirica* Forest
- Larix sibirica* Forest
- Pinus sylvestris* Forest
- Broad-leaved Forest
- Grassland
- Pasture Land
- Settlement
- Open-air Mining
- Water Body

This map was completed in January, 1993 based on the interpretation of LANDSAT images shown on the following table.

Image No.	Date of Data Collection
132-28	Aug. 21 '92, Sep. 05 '92
132-29	Aug. 18 '92, Sep. 17 '92
132-30	Aug. 27 '92, Sep. 18 '92
132-31	Aug. 21 '92, Sep. 11 '92
132-32	Aug. 17 '92
132-33	Aug. 18 '92, Sep. 17 '92
132-34	Aug. 27 '92, Sep. 18 '92
132-35	Aug. 17 '92, Oct. 11 '92

