

Japan International Cooperation Agency
Ministry of Nature and Environment, Mongolia

THE FOREST RESOURCES MANAGEMENT STUDY

IN

SOLONGE AIMAAG, MONGOLIA

LAND COVER MAPS

JANUARY, 1985

JICA LIBRARY
J1165027121

Japan Forest Technical Association (JFTA)

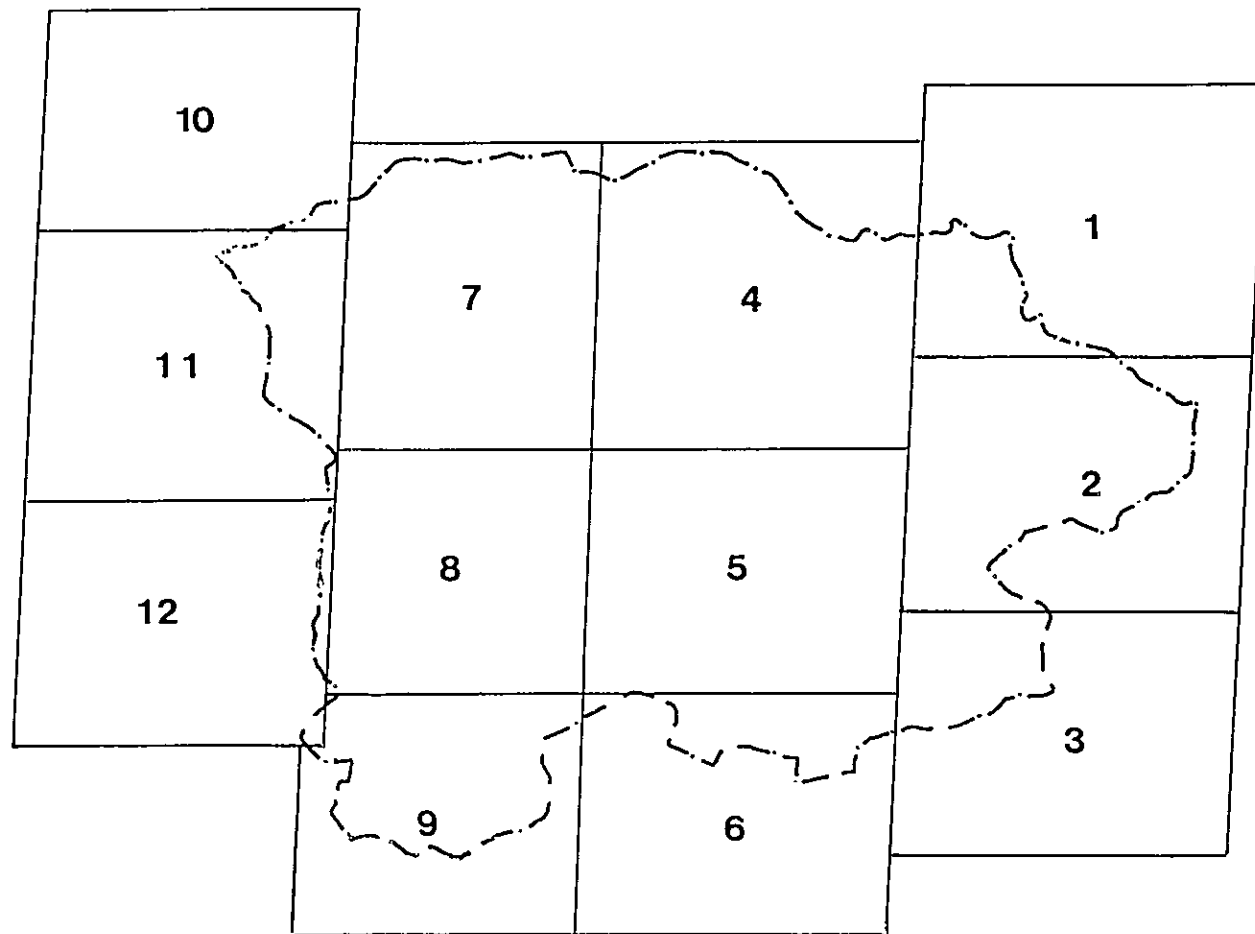
Asia Air Survey Co., Ltd.



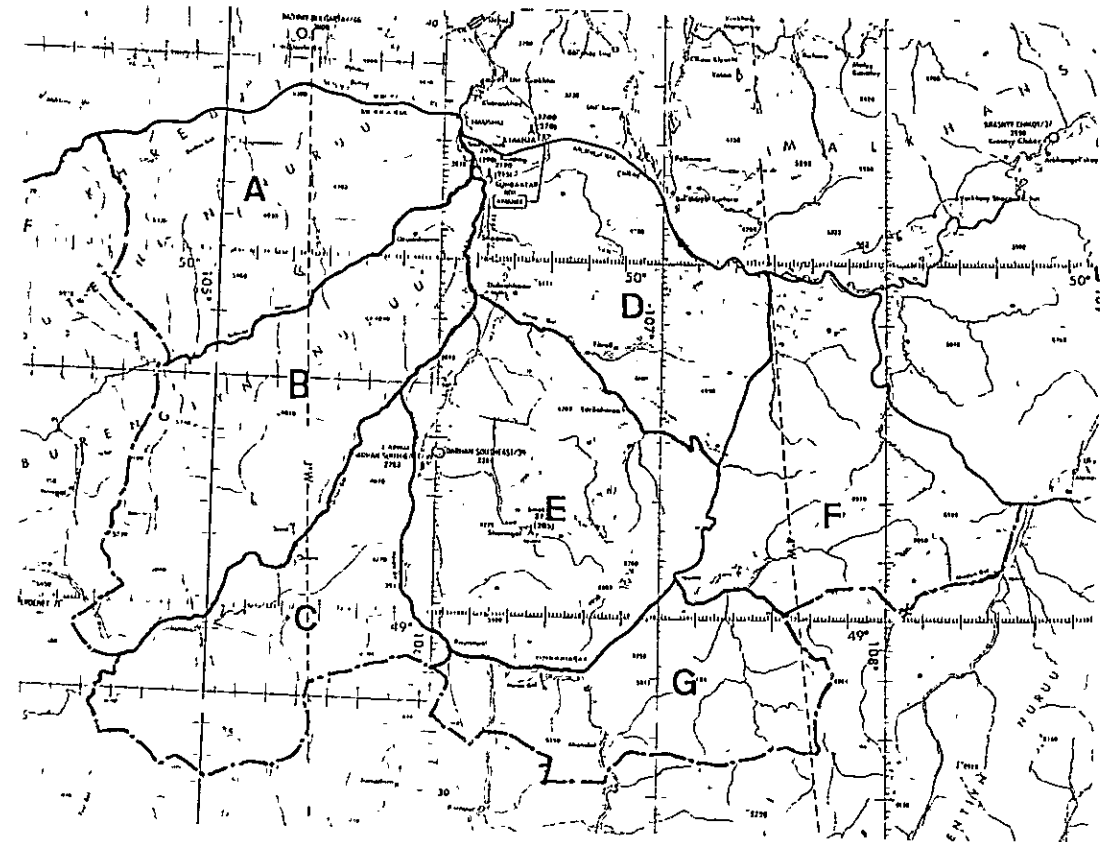
The forest resources management study
in Solong Aimaag, Mongolia

LAND COVER MAPS

LL115
81
AFA



Coverage of Land Cover Map



Zoning of Study Area

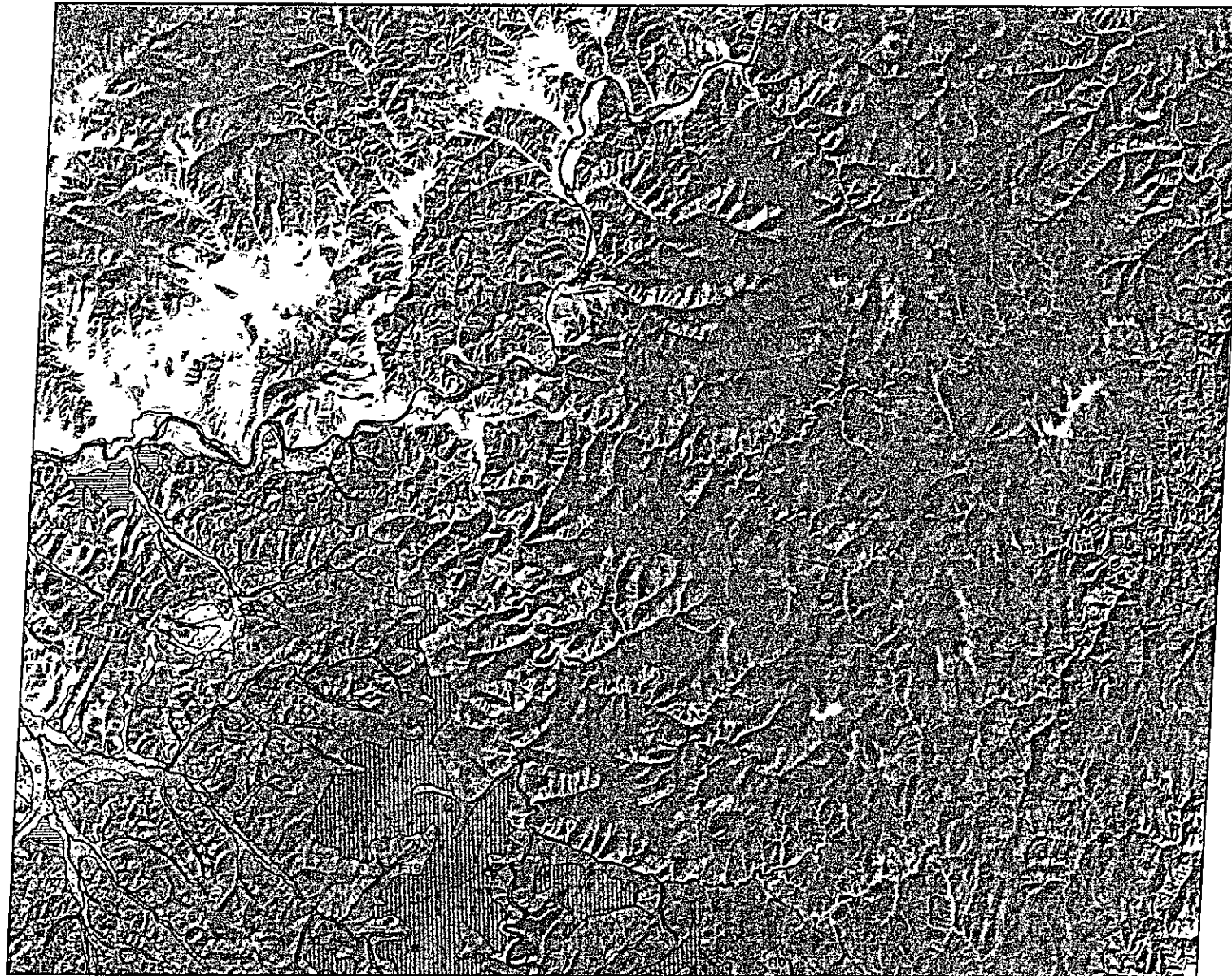
TABLE OF CONTENTS

1. Landsat Image with Land Cover Overlay Map (Twelve Pieces, Scale 1:250,000)
2. Land Cover Map (Topographic Map) (Twelve Pieces, Scale 1:250,000)
3. Land Cover Map (Vegetation Map) (Twelve Pieces, Scale 1:250,000)
4. Compiled Land Cover Map (Topographic Map, Scale 1:500,000)
5. Compiled Land Cover Map (Vegetation Map, Scale 1:500,000)
6. Technical Report



1165027(2)

LANDSAT Image (Cover Map - (Topography No. 1) '92)



Scale 1:250,000

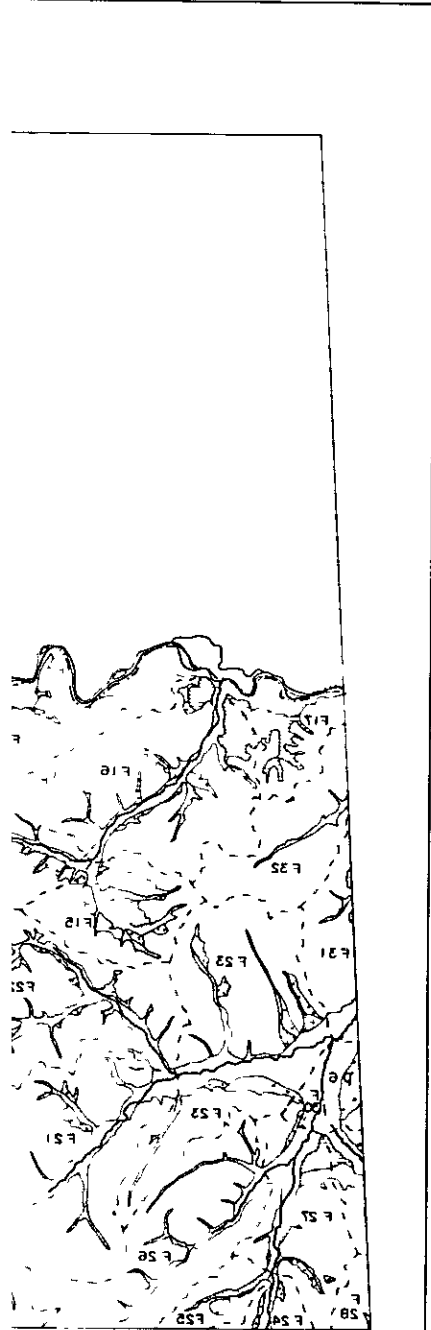
10				1
11	7	4		2
12	8	5		3
	9	6		

Legend

- Mountain/Alpine Forest
- Lower/High Forest of Summit
- Steppe/Deciduous Forest
- Oak/Alpine Forest
- Alluvial Fan
- Flood Plain
- Wetland
- Open-air Mining
- Salt Basin and its Number
- Boundary of Selenge Aimak

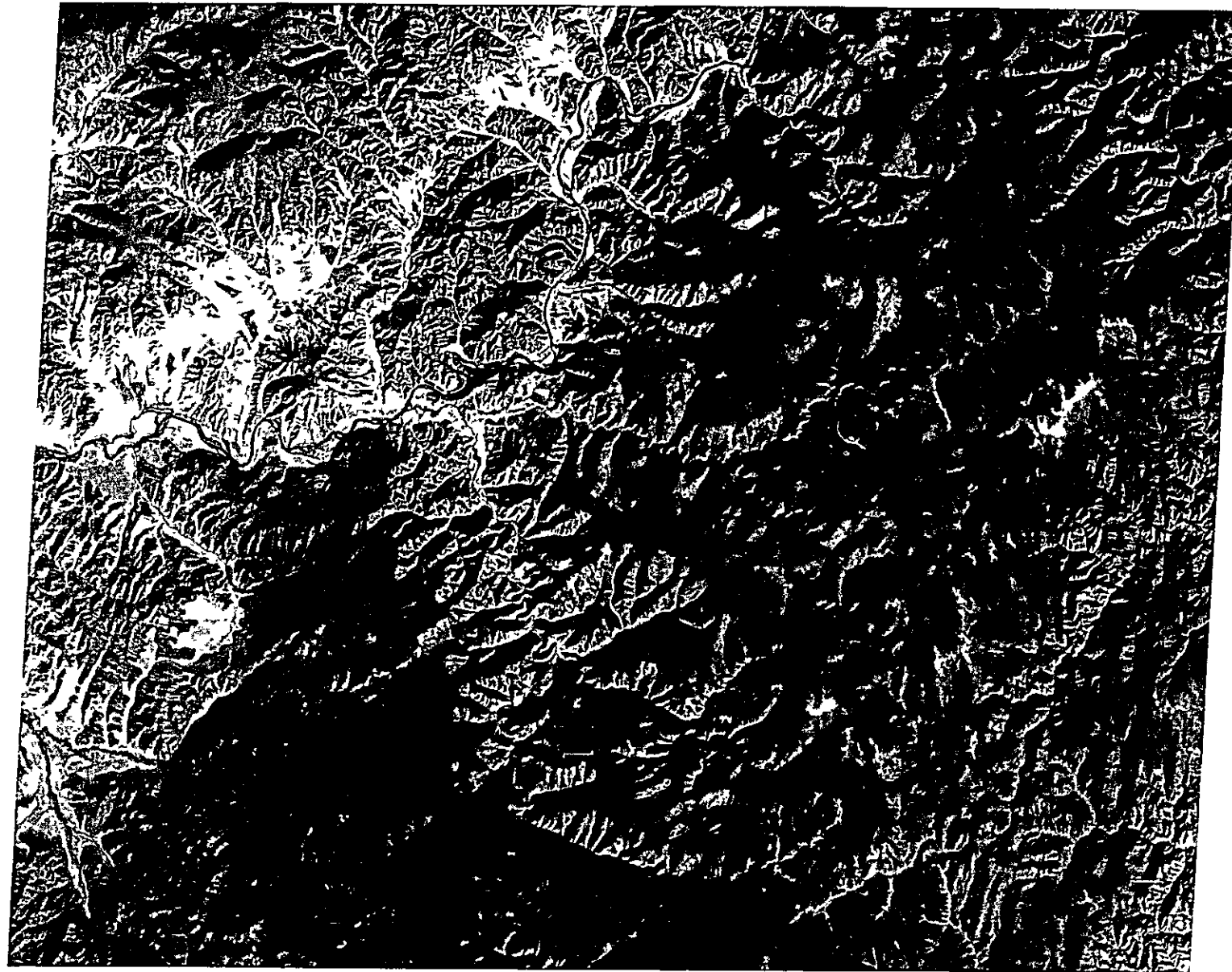
This map was completed in January, 1992 based on the interpretation of LANDSAT images shown on the following table

Date	Area of Data Collection
120-20	Dec. 24 '89 - Dec. 25 '89
121-21	Dec. 18 '91 - Oct. 17 '91
122-22	Dec. 27 '89 - Dec. 12 '90
123-23	Aug. 21 '90 - May 12 '90
124-24	Dec. 17 '90
125-25	Dec. 18 '89 - Dec. 17 '90
126-26	Dec. 22 '89 - Dec. 11 '90
127-27	Dec. 12 '90 - Oct. 11 '91



Research Institute of Forestry & Wildlife (RIFW)
Ministry of Nature and Environment, Mongolia

LANDSAT Image (Scene No. 17 '92)



Research Institute of Forestry & Wildlife (RIFW)
Ministry of Nature and Environment, Mongolia

Japan International Cooperation Agency (JICA)
Japan Forest Technical Association (JAFTA)
Asia Air Survey Co., Ltd.



Scale 1:250,000

10			
11	7	4	1
12	8	5	2
	9	6	3

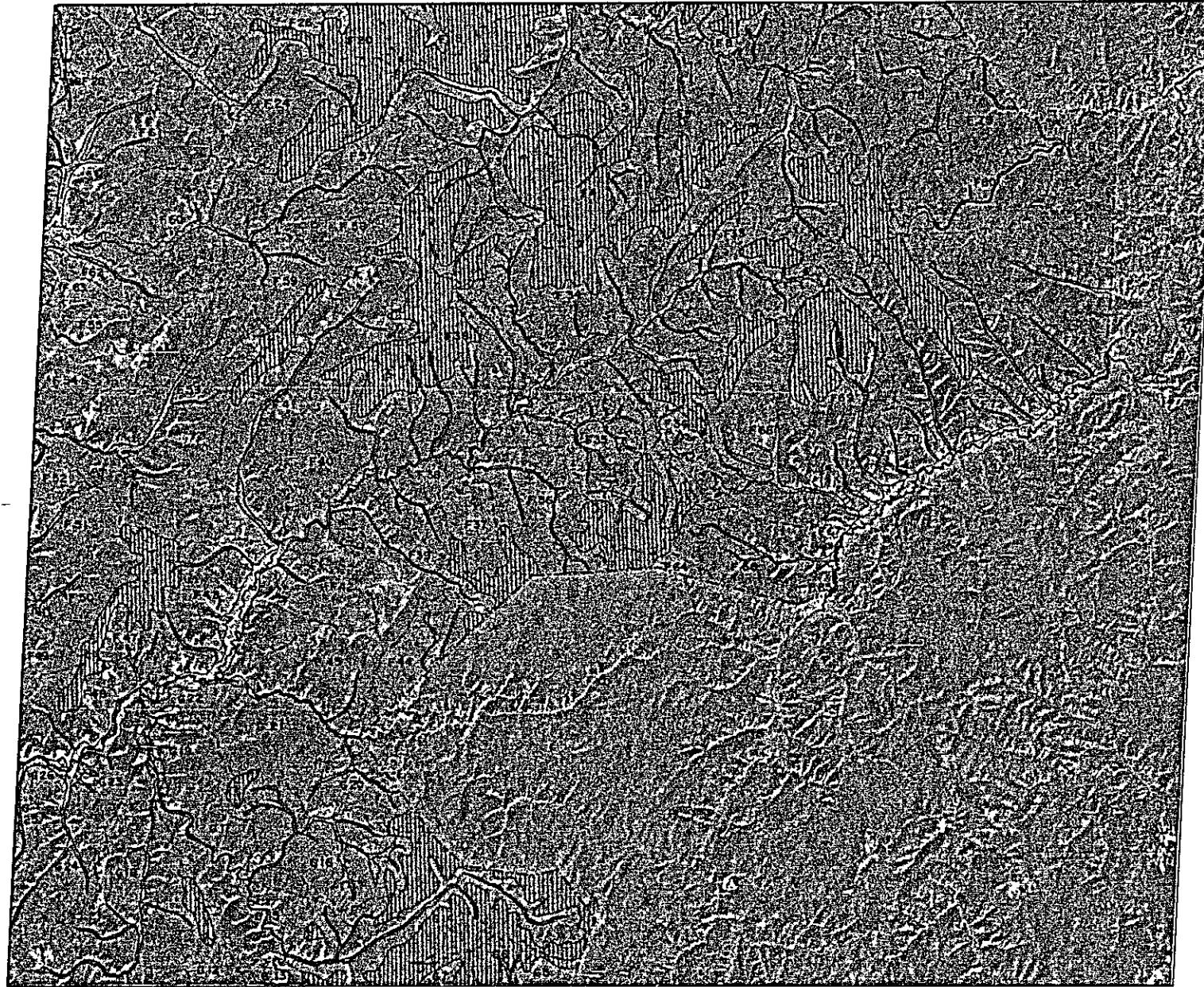
Legend

- Pinus sibirica* Forest
- Larix sibirica* Forest
- Pinus sylvestris* Forest
- Broad-leaved Forest
- Grassland
- Farm Land
- Settlement
- Open-air Mining
- Water Body

This map was completed in January, 1993
based on the interpretation of LANDSAT
images shown on the following table

Path/Row	Date of Data Collection
130-26	Sep 24 '89, Dec 05 '89
131-25	Jun 18 '91, Oct 17 '92
131-26	Sep 07 '89, Sep 10 '90
132-25	Aug 21 '89, May 12 '90
	Sep 17 '90
132-26	Jun 18 '89, Sep 17 '90
132-25	Sep 29 '89, Nov 19 '90
132-26	Nov 19 '90, Oct 15 '92

LANDSAT Image (Cover Map) (Vegetation No. 20 '90)



Scale 1:250,000

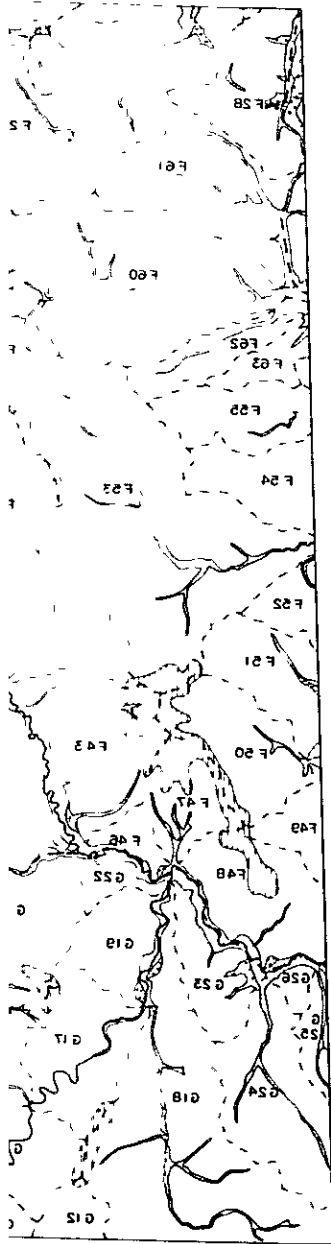
10			1
11	7	4	2
12	8	6	3
	9	6	

Legend

- Mountainous Forest
- Lower Mountain Forest of Summit
- Plateau, Over 900m Forest
- Gobi and Steppe Forest
- Alluvial Fan
- Plain
- Water Body
- Open-pit Mining
- Water Basin and its Number
- Boundary of Selenge Aimag

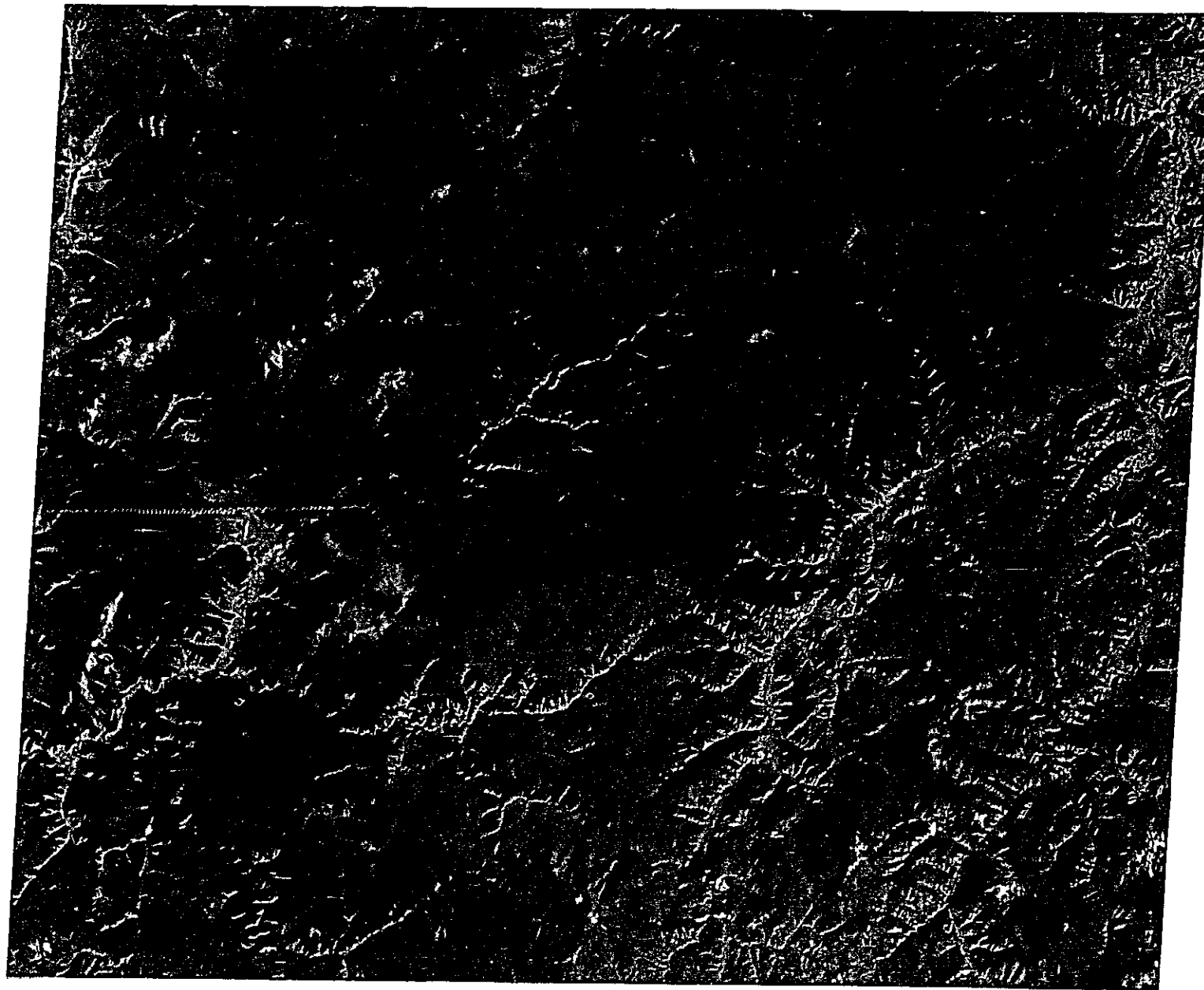
This map was completed in January, 1990 based on the interpretation of LANDSAT images shown on the following table.

Path/Row	Date of Data Collection
120-20	Aug. 21 '89 - Sep. 08 '89
121-20	Aug. 18 '89 - Oct. 17 '89
121-20	Aug. 07 '89 - Sep. 16 '89
120-20	Aug. 21 '89 - Sep. 15 '89
122-20	Aug. 18 '89 - Sep. 17 '89
122-20	Aug. 21 '89 - Sep. 22 '89
122-20	Nov. 12 '89 - Oct. 15 '89



Research Institute of Forestry & Wildlife (RIFW)
Ministry of Nature and Environment, Mongolia

LANDSAT Image (Cover Map - Vegetation Sep. 20 '90)



Research Institute of Forestry & Wildlife (RIFW)
Ministry of Nature and Environment, Mongolia

Japan International Cooperation Agency (JICA)
Japan Forest Technical Association (JAFITA)
Aisa Air Survey Co., Ltd.



Scale 1:250,000

10			
11	7	4	1
12	8	5	2
	9	6	3

Legend

- Pinus sibirica Forest
- Larix sibirica Forest
- Pinus sylvestris Forest
- Broad-leaved Forest
- Grassland
- Farm Land
- Settlement
- Open-air Mining
- Water Body

This map was completed in January, 1995
based on the interpretation of LANDSAT
images shown on the following table

Path/Row	Date of Data Collection
122-28	Sep. 24 '89, Dec. 08 '89
121-28	Jan. 18 '91, Oct. 17 '91
121-28	Sep. 07 '90, Sep. 19 '90
122-28	Aug. 21 '90, May 12 '90
	Sep. 17 '90
122-28	Jan. 16 '91, Sep. 17 '90
122-28	Sep. 29 '89, May 16 '90
122-28	Nov. 17 '90, Oct. 13 '91

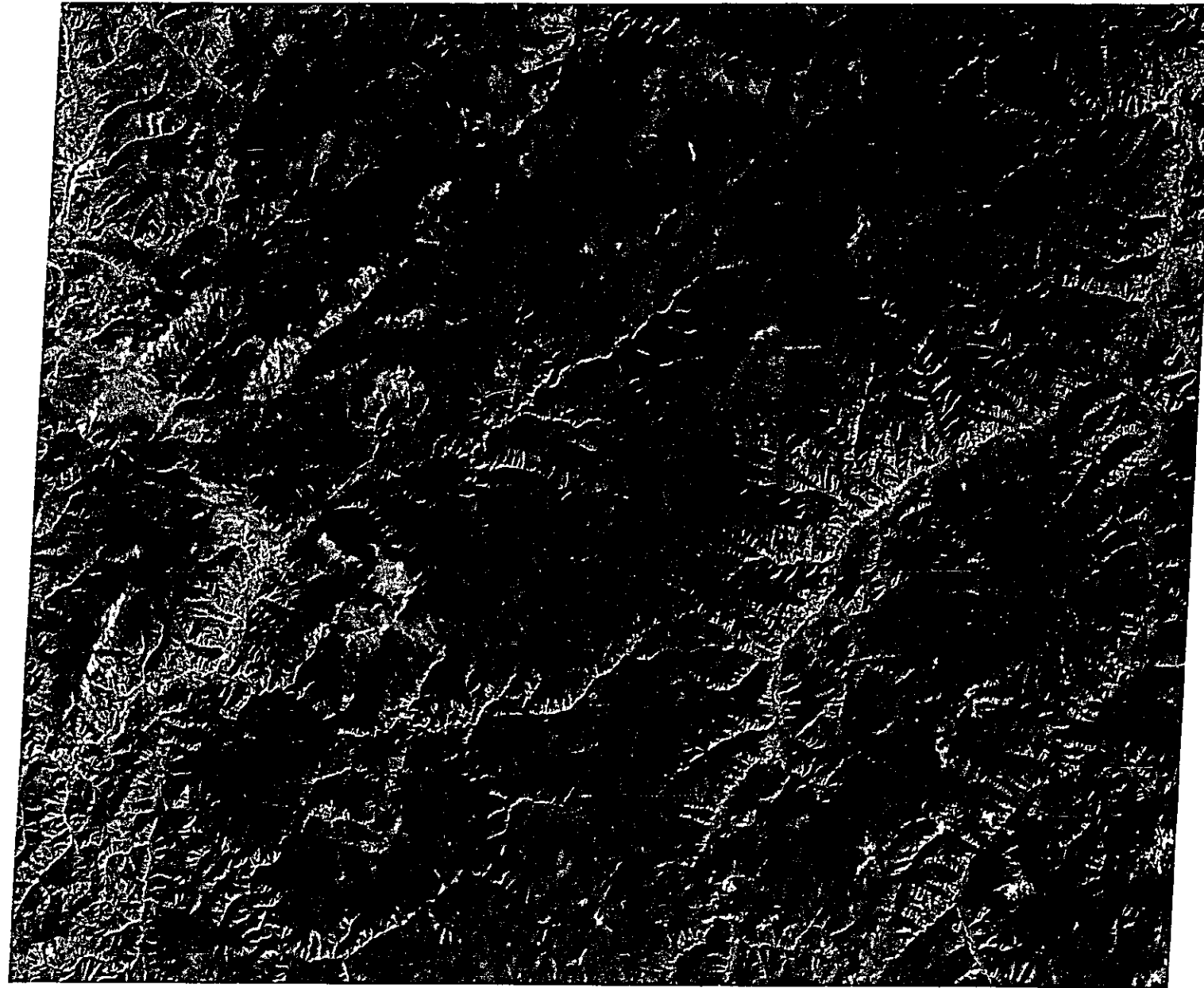
Хүний амьжиргаа болон орчин цагийн хөгжлийн үндэс болж байгаагаар төсвийн зарцуулалт



Хүний амьжиргаа болон орчин цагийн хөгжлийн үндэс болж байгаагаар төсвийн зарцуулалт

The Forest Resources Management Study in Selenge Aimak, Mongolia

LANDSAT Image(scene 131-26-I, date Sep.10'90)



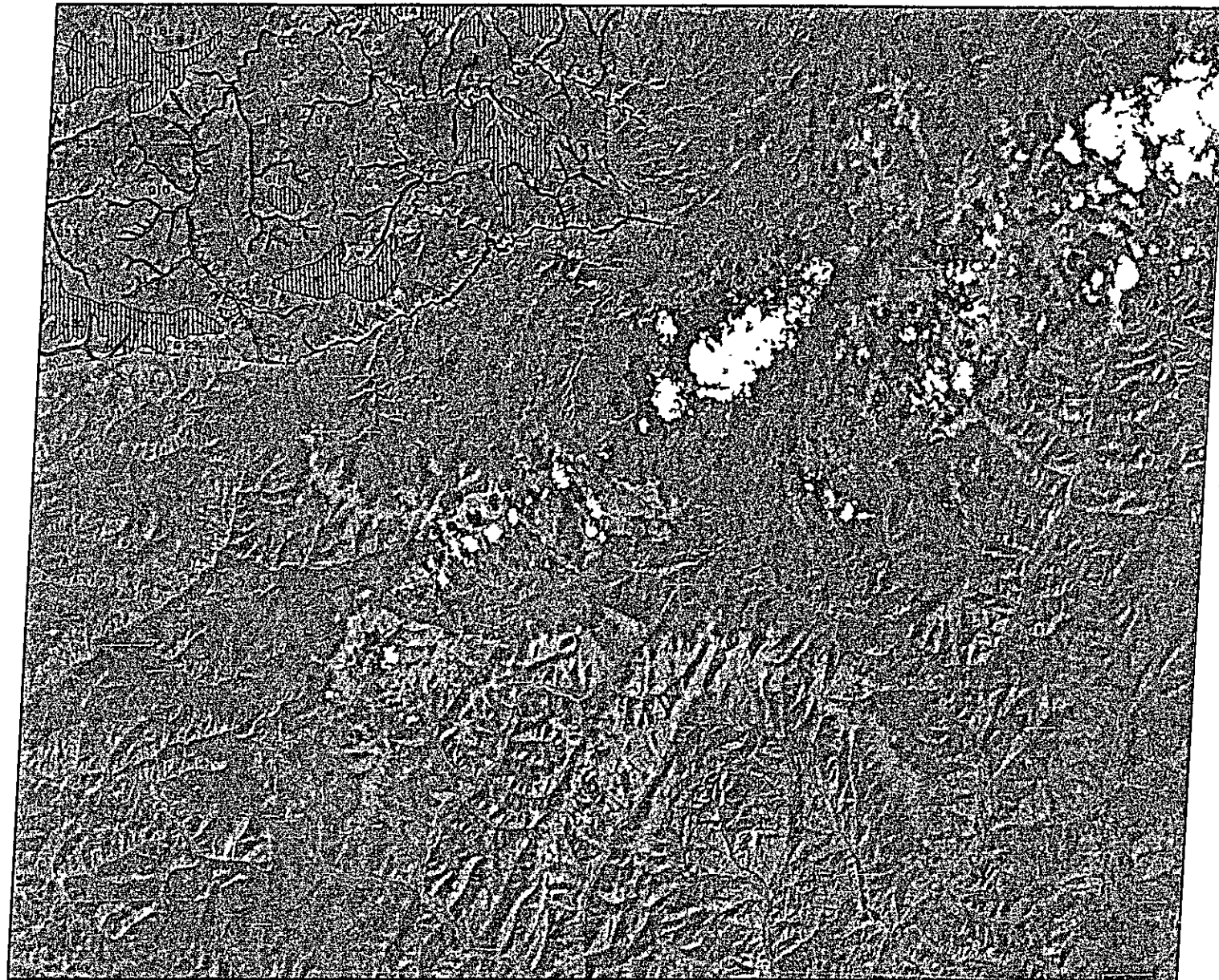
5 0 5 10 km
Scale 1:250,000

10			1
11	7	4	2
12	8	5	3
	9	6	

Research Institute of Forestry & Wildlife (RIFW)
Ministry of Nature and Environment, Mongolia

Japan International Cooperation Agency (JICA)
Japan Forest Technical Association (JAPFA)
Asia Air Survey Co., Ltd

LANDSAT Image (Cover Map) (Vegetation No. 30) '90



Scale 1:250,000

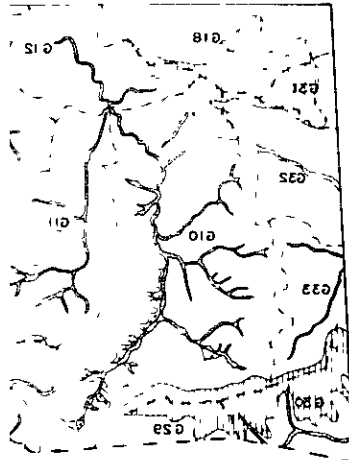
10			
11	7	4	1
12	8	5	2
	9	6	3

Legend

- Mountain-like Forest
- Large Leaf Broad Forest of Summit
- Plateau/Conifer Forest
- Oak-birch Forest
- Khirshuk Forest
- Floodplain
- Wetland
- Open-air Mining
- Water Body and its Number
- Boundary of Selenge Aimak

This map was completed in January, 1995 based on the interpretation of LANDSAT images shown on the following table

Path	Row	Date of Data Collection
123-24	Row 24	Dec. 21 '89
121-23	Row 23	Oct. 17 '91
121-23	Row 23	Sep. 18 '90
122-23	Row 23	May. 13 '90
122-23	Row 23	May. 17 '90
122-23	Row 23	May. 17 '90
122-23	Row 23	Nov. 18 '90
122-23	Row 23	Oct. 11 '92

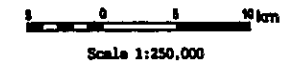


Research Institute of Forestry & Wildlife (RIFW)
Ministry of Nature and Environment, Mongolia

LANDSAT Image (Scene No. 132-26 Vegetation Sep. 30 '90)



Research Institute of Forestry & Wildlife (RIFW)
Ministry of Nature and Environment, Mongolia



10			
11	7	4	1
12	8	5	2
	9	6	3

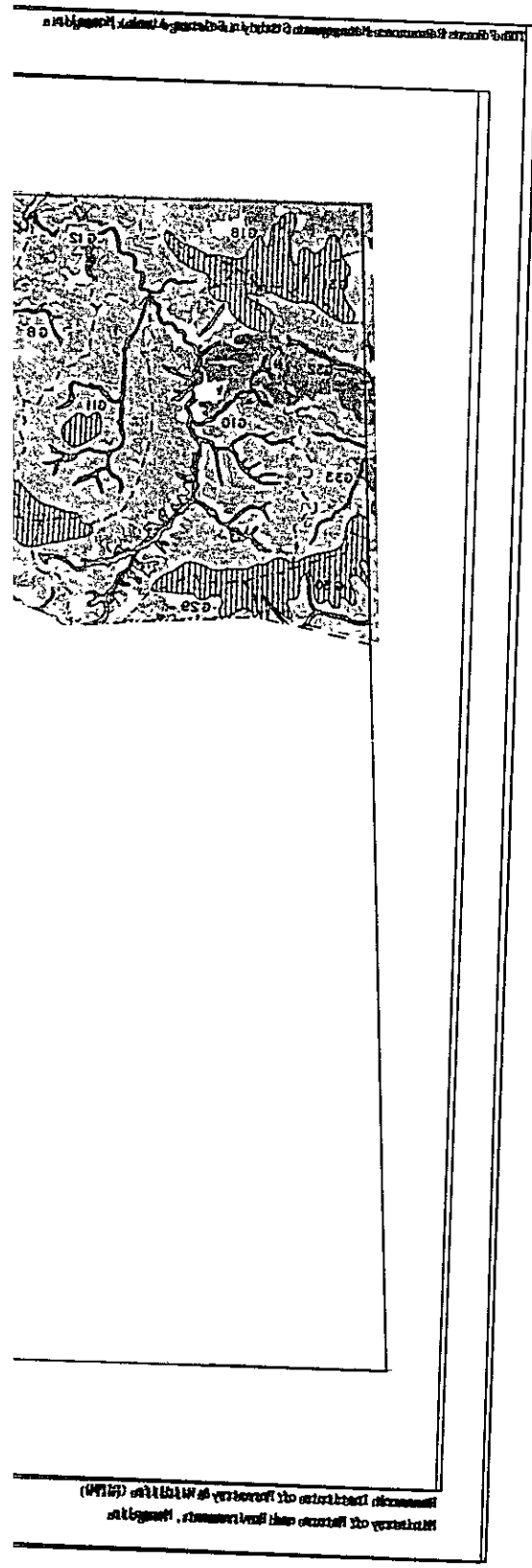
Legend

- Pinus sibirica* Forest
- Larix sibirica* Forest
- Pinus sylvestris* Forest
- Broad-leaved Forest
- Grassland
- Farm Land
- Settlement
- Open-air Mining
- Water Body

This map was completed in January, 1995
based on the interpretation of LANDSAT
images shown on the following table

Scene No.	Date of Data Collection
130-26	Jan. 24 '89, Dec. 09 '89
131-26	Jan. 18 '91, Oct. 17 '91
131-26	Jan. 07 '89, Sep. 10 '90
132-26	Aug. 21 '89, May 12 '90
	Sep. 17 '90
132-26	Jan. 18 '89, Sep. 17 '90
133-26	Sep. 29 '89, Nov. 19 '90
133-26	Nov. 19 '89, Oct. 13 '91

Japan International Cooperation Agency (JICA)
Japan Forest Technical Association (JAPFA)
Asia Air Survey Co., Ltd.



The Forest Resources Management Study in Solongo Aimaak, Mongolia

LANDSAT Image(scene 131-26-III, date Sep.10'90)



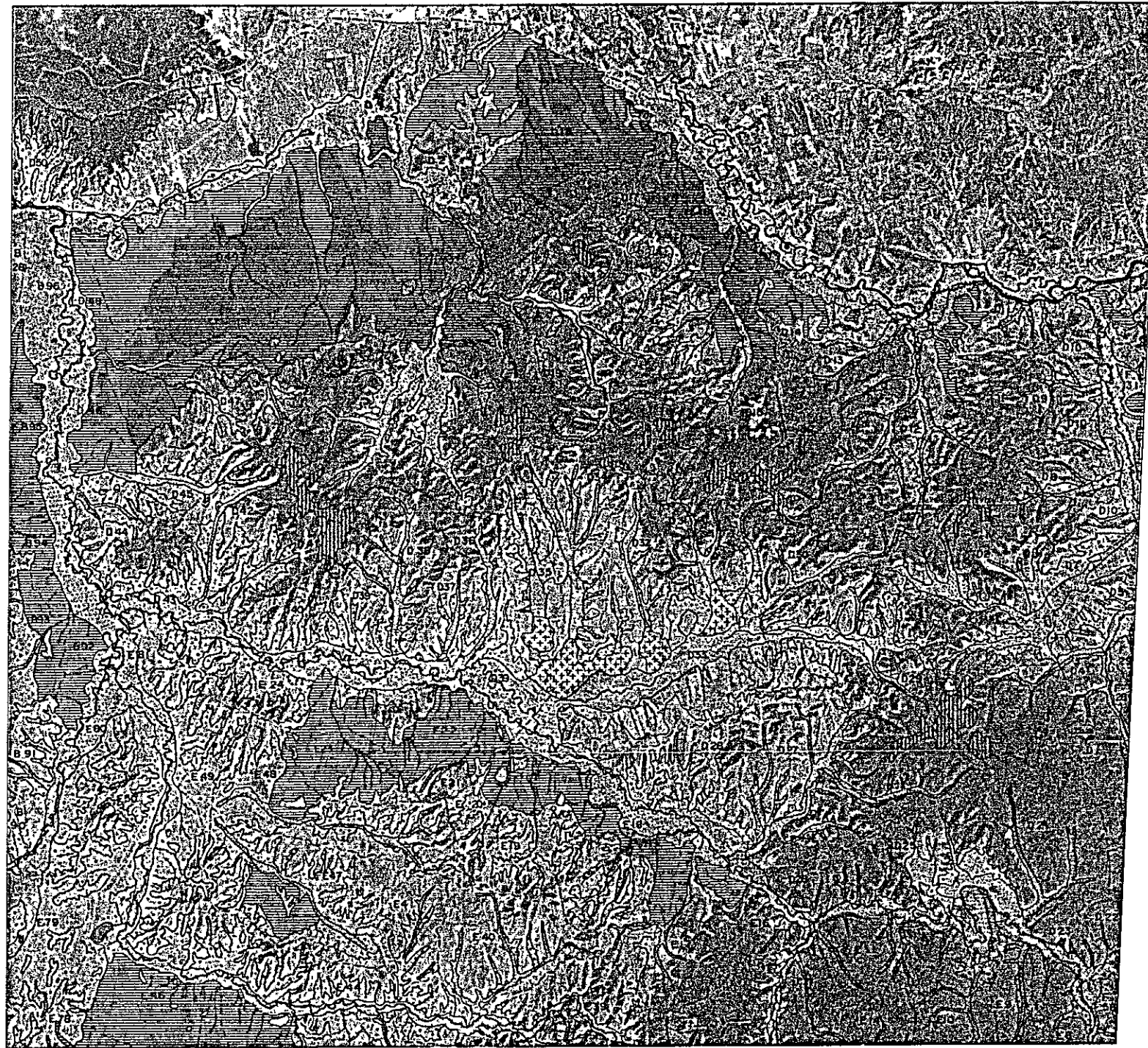
Scale 1:250,000

10			1
11	7	4	2
12	8	5	3
	9	6	

Research Institute of Forestry & Wildlife (RIFW)
Ministry of Nature and Environment, Mongolia

Japan International Cooperation Agency (JICA)
Japan Forest Technical Association (JAFTA)
Asia Air Survey Co., Ltd.

LANDSAT Image (Cover Map (Topography No. 2) '89)



Scale 1:250,000

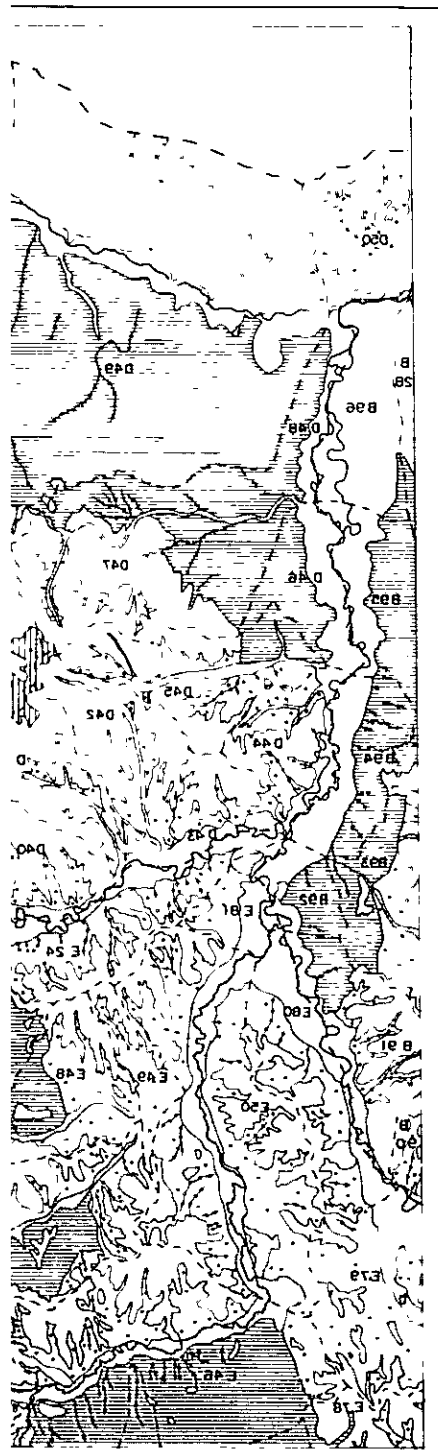
10			1
11	7	4	2
12	8	5	3
	9	6	

Legend

- Mountainous Forest
- Low-lying Forest of Summit
- Watershed Forest
- Cobblestone Forest
- Alluvial Fan
- Flood Plain
- Watercourse
- Open-pit Mining
- Water Body Drainage Basin and its Number
- - - Boundary of Solenge Aimag

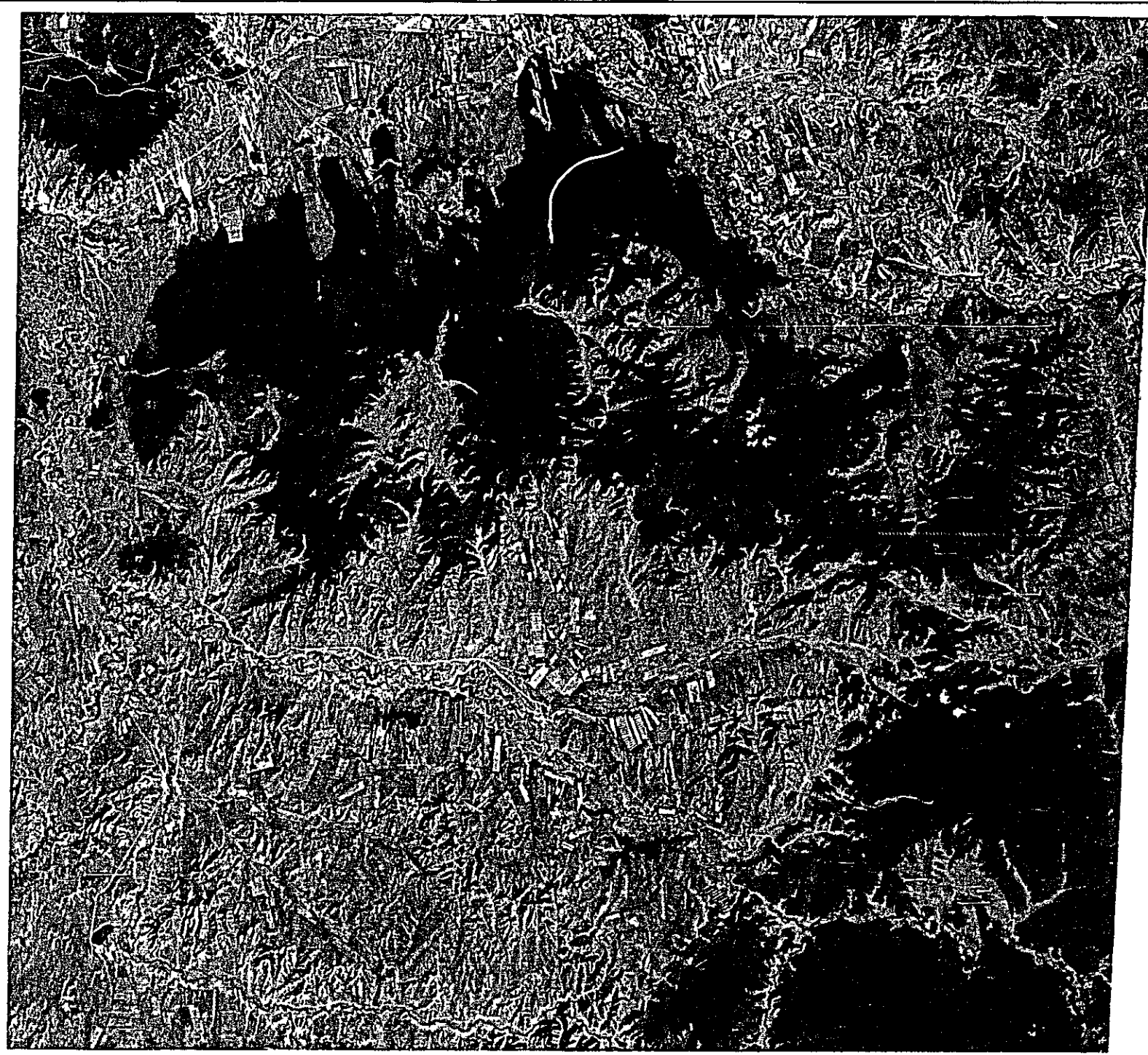
This map was completed in January, 1989 based on the interpretation of LANDSAT images shown on the following table

Box No.	Date of Data Collection
10-12	Jan. 21 '89, Feb. 29 '89
11-12	Jan. 11 '89, Feb. 11 '89
11-12	Jan. 27 '89, Feb. 11 '89
12-25	Aug. 21 '89, May 11 '90
	Jan. 11 '89
12-25	Jan. 11 '89, Feb. 11 '89
12-25	Jan. 27 '89, Feb. 11 '89
12-25	Jan. 11 '89, Feb. 11 '89



Research Institute of Forestry & Wildlife (RIFW)
Ministry of Nature and Environment, Mongolia

LANDSAT Image (Scene Map-25 Vegetation Aug. 21 '89)

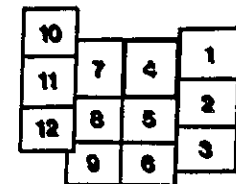


Research Institute of Forestry & Wildlife (RIFW)
Ministry of Nature and Environment, Mongolia

Japan International Cooperation Agency (JICA)
Japan Forest Technical Association (JAFPA)
Asia Air Survey Co., Ltd.



Scale 1:250,000



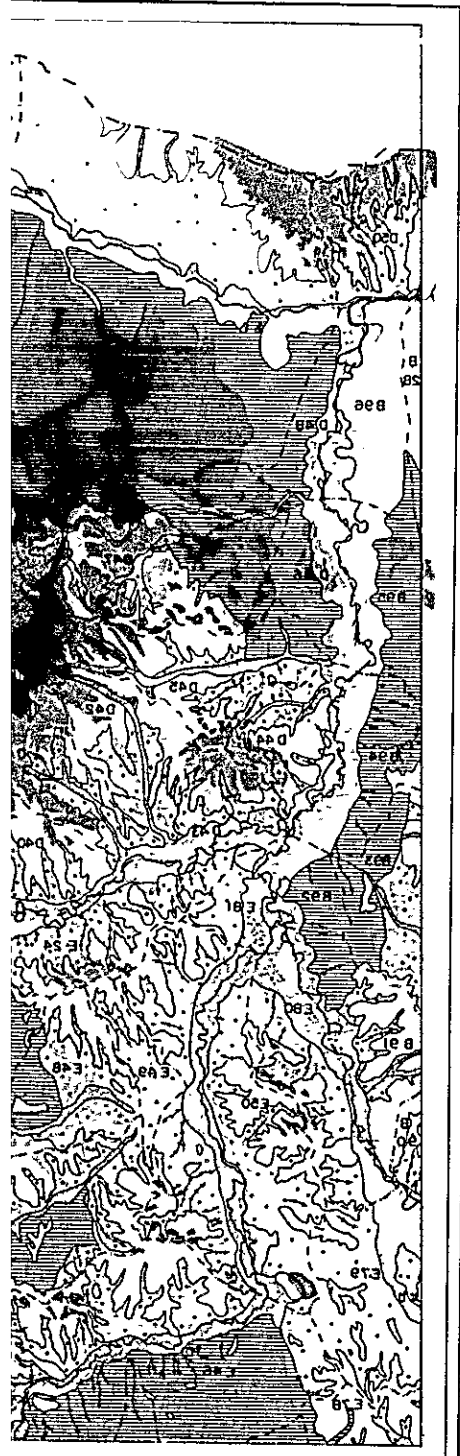
Legend

- Pinus sibirica* Forest
- Larix sibirica* Forest
- Pinus sylvestris* Forest
- Broad-leaved Forest
- Grassland
- Farm Land
- Settlement
- Open-pit Mining
- Water Body

This map was completed in January, 1995
based on the interpretation of LANDSAT
images shown on the following table

Path-Row	Date of Data Collection
120-28	Aug. 24 '89, Dec. 05 '89
121-28	Jan. 18 '91, Oct. 17 '92
121-28	Aug. 07 '89, Sep. 19 '90
122-28	Aug. 21 '89, May 12 '90
	Sep. 17 '90
124-28	Jan. 18 '89, Sep. 17 '90
123-28	Sep. 21 '89, Mar. 18 '90
122-28	Mar. 18 '90, Oct. 15 '92

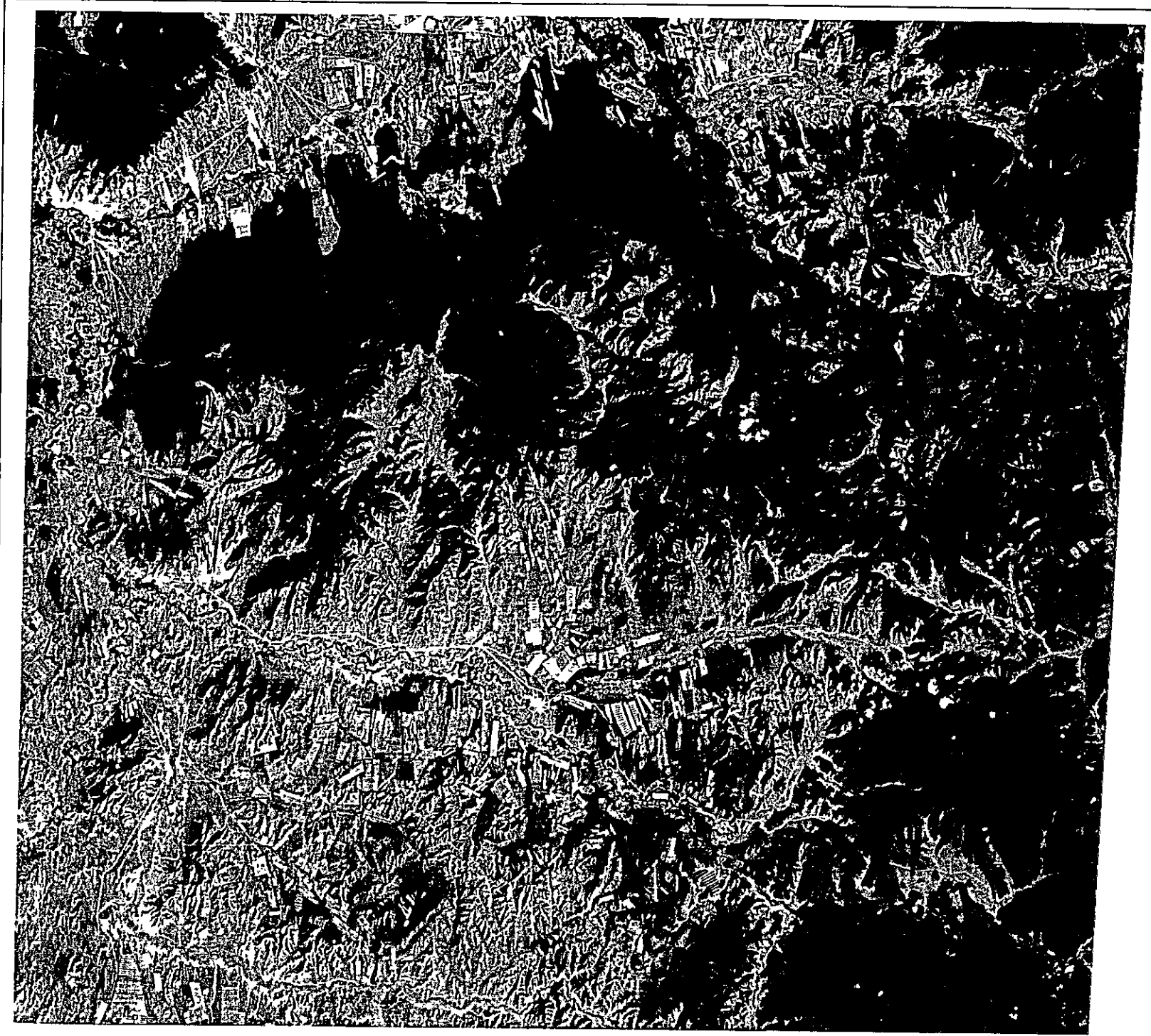
1. 2. 3. 4. 5. 6. 7. 8. 9. 10. 11. 12. 13. 14. 15. 16. 17. 18. 19. 20. 21. 22. 23. 24. 25. 26. 27. 28. 29. 30. 31. 32. 33. 34. 35. 36. 37. 38. 39. 40. 41. 42. 43. 44. 45. 46. 47. 48. 49. 50. 51. 52. 53. 54. 55. 56. 57. 58. 59. 60. 61. 62. 63. 64. 65. 66. 67. 68. 69. 70. 71. 72. 73. 74. 75. 76. 77. 78. 79. 80. 81. 82. 83. 84. 85. 86. 87. 88. 89. 90. 91. 92. 93. 94. 95. 96. 97. 98. 99. 100.



1. 2. 3. 4. 5. 6. 7. 8. 9. 10. 11. 12. 13. 14. 15. 16. 17. 18. 19. 20. 21. 22. 23. 24. 25. 26. 27. 28. 29. 30. 31. 32. 33. 34. 35. 36. 37. 38. 39. 40. 41. 42. 43. 44. 45. 46. 47. 48. 49. 50. 51. 52. 53. 54. 55. 56. 57. 58. 59. 60. 61. 62. 63. 64. 65. 66. 67. 68. 69. 70. 71. 72. 73. 74. 75. 76. 77. 78. 79. 80. 81. 82. 83. 84. 85. 86. 87. 88. 89. 90. 91. 92. 93. 94. 95. 96. 97. 98. 99. 100.

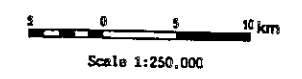
The Forest Resources Management Study in Selenge Aimak, Mongolia

LANDSAT Image (scene 132-25-IV, date Aug. 21 '89)



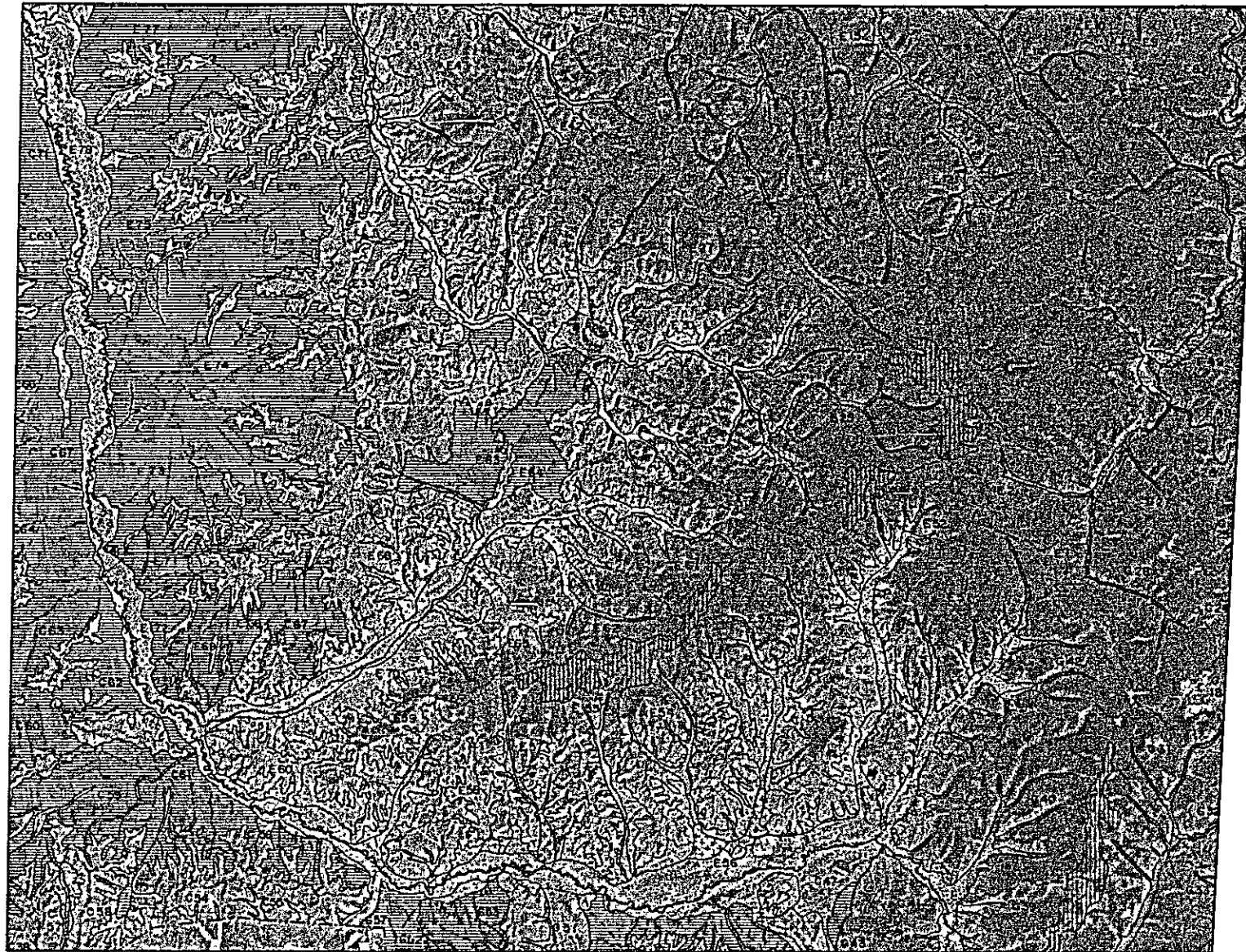
Research Institute of Forestry & Wildlife (RIFW)
Ministry of Nature and Environment, Mongolia

Japan International Cooperation Agency (JICA)
Japan Forest Technical Association (JAFTA)
Asie Air Survey Co., Ltd.



| | | | |
|----|---|---|---|
| 10 | | | 1 |
| 11 | 7 | 4 | 2 |
| 12 | 8 | 5 | 3 |
| | 9 | 6 | |

LANDSAT Image (Cover Map-7 (Vegetation) No. 57 '90)



0 5 10 km
Scale 1:250,000

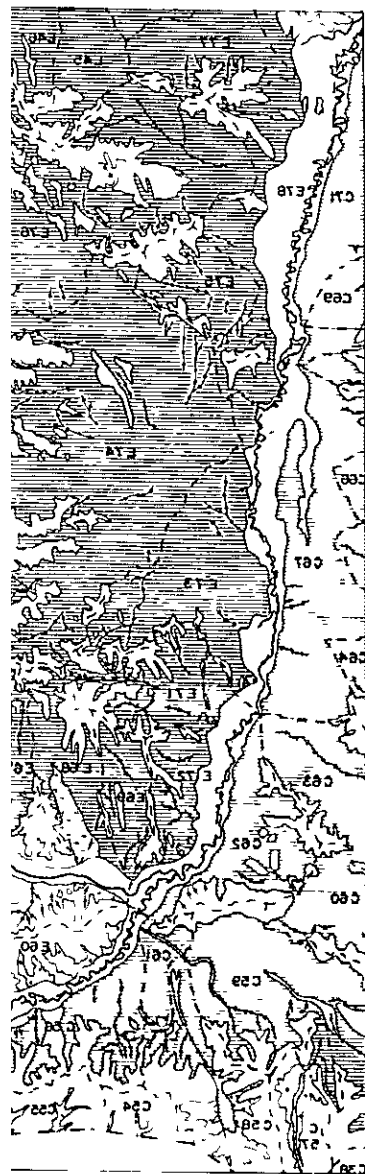
| | | | |
|----|---|---|---|
| 10 | | | |
| 11 | 7 | 4 | 1 |
| 12 | 8 | 5 | 2 |
| | 9 | 6 | 3 |

Legend

- Mountain-Hills Forest
- Low-to-Mid/Surf Forest of Summit
- Ulaan-Ulaan Forest
- Gobi-Gobi Forest
- Khirgishan
- Fossil Basin
- Watercourse
- Openair Mining
- Water Body Draining Basin and its Number
- Boundary of Selenge Aimak

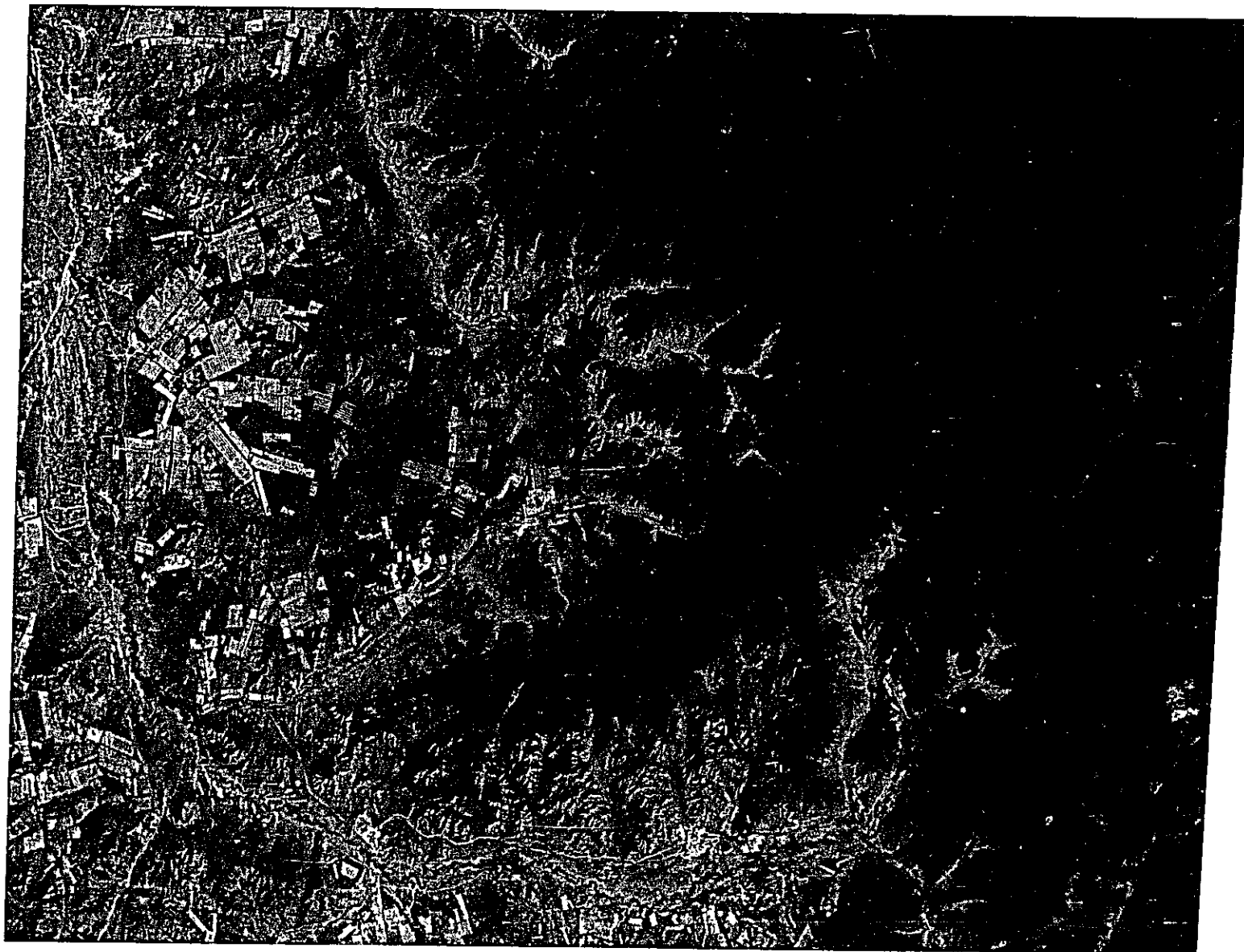
This map was completed in January, 1995 based on the interpretation of LANDSAT images shown on the following table.

| Path/Row | Date of Data Collection |
|----------|--------------------------------------|
| 120-20 | Aug. 24 '89, Dec. 05 '89 |
| 121-20 | Jan. 19 '91, Oct. 17 '91 |
| 122-20 | Aug. 07 '89, Sep. 10 '90 |
| 123-20 | Aug. 21 '89, May 12 '90, Sep. 27 '90 |
| 124-20 | Jan. 19 '89, Sep. 17 '90 |
| 125-20 | Sep. 29 '89, Nov. 19 '90 |
| 126-20 | Nov. 19 '90, Oct. 13 '91 |



Research Institute of Forestry & Wildlife (RIFW)
Ministry of Nature and Environment, Mongolia

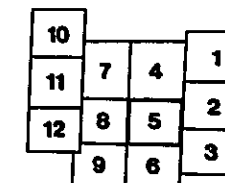
LANDSAT Image (Scene 132-26) (Date: Sep. 17 '90)



Research Institute of Forestry & Wildlife (RIFW)
Ministry of Nature and Environment, Mongolia



Scale 1:250,000



Legend

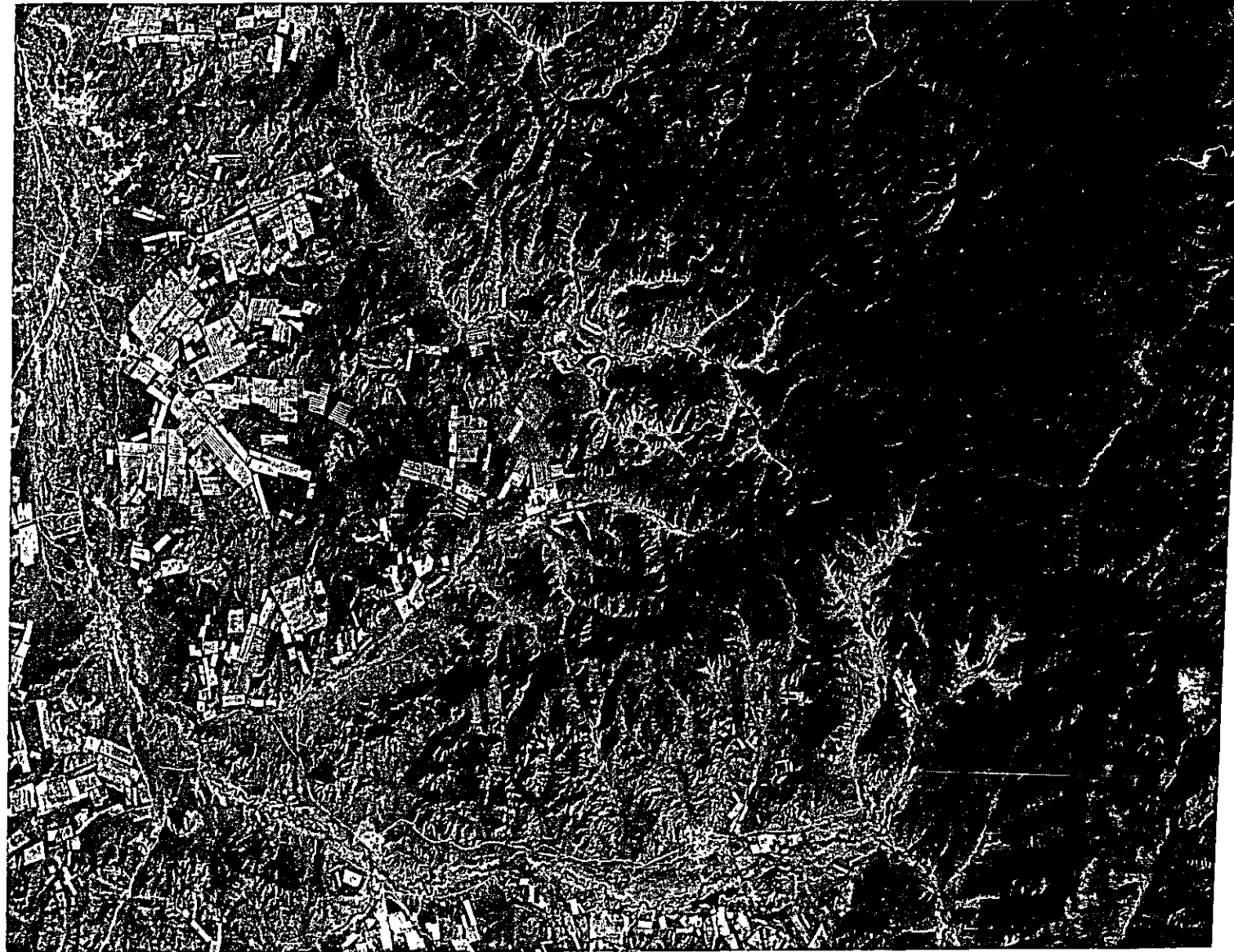
- Pinus sibirica* Forest
- Larix sibirica* Forest
- Pinus sylvestris* Forest
- Broad-leaved Forest
- Grassland
- Farm Land
- Settlement
- Open-air Mining
- Water Body

This map was completed in January, 1995
based on the interpretation of LANDSAT
images shown on the following table

| Grid No. | Date of Data Collection |
|----------|--------------------------|
| 132-26 | Sep. 17 '89, Dec. 05 '89 |
| 132-25 | Jan. 15 '91, Oct. 17 '92 |
| 132-28 | Sep. 07 '89, Sep. 10 '90 |
| 132-25 | Aug. 21 '89, May 12 '90 |
| | Sep. 17 '90 |
| 132-26 | Jan. 18 '93, Sep. 17 '90 |
| 132-25 | Sep. 27 '89, Nov. 18 '90 |
| 132-28 | Nov. 19 '90, Oct. 19 '91 |

Japan International Cooperation Agency (JICA)
Japan Forest Technical Association (JAFPA)
Asia Air Survey Co., Ltd.

LANDSAT Image(scene 132-26-II, date Sep.17'90)

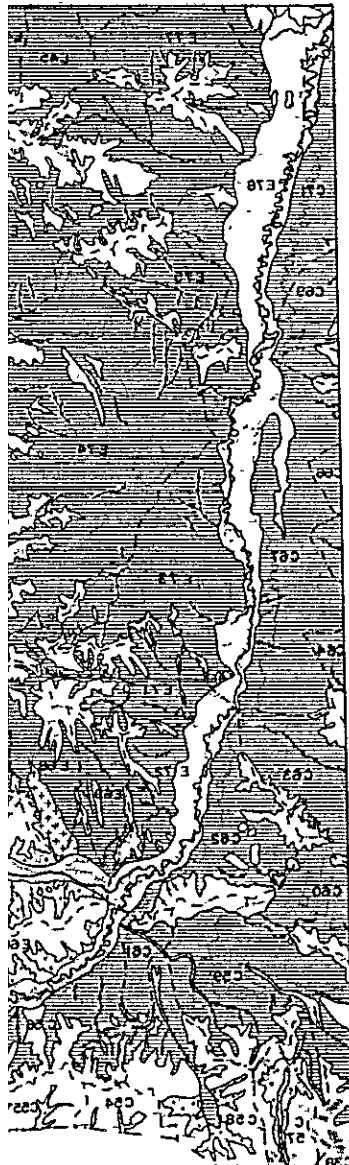


5 0 5 10 km
Scale 1:250,000

| | | | |
|----|---|---|---|
| 10 | | | 1 |
| 11 | 7 | 4 | 2 |
| 12 | 8 | 5 | 3 |
| | 9 | 6 | |

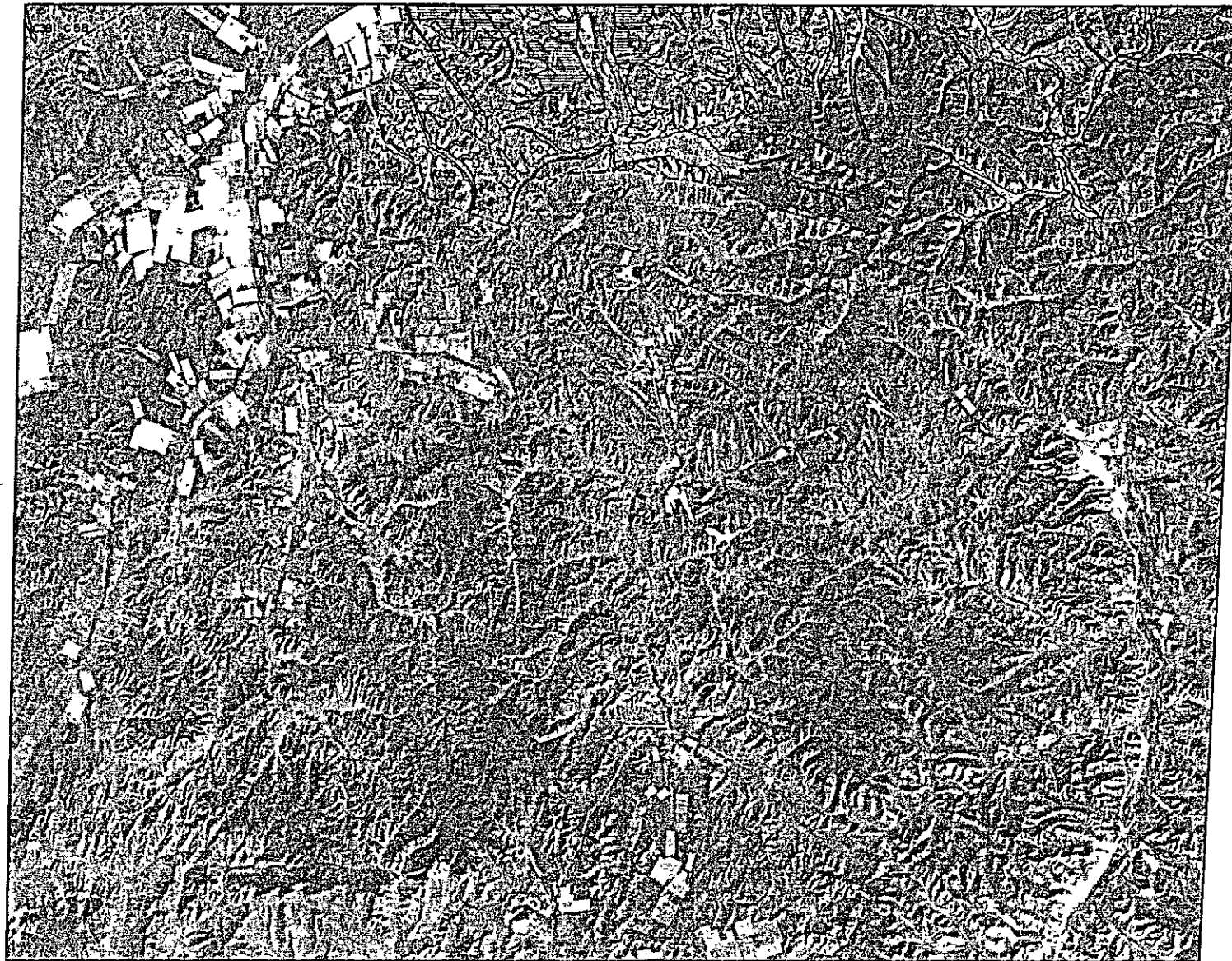
Research Institute of Forestry & Wildlife (RIFW)
Ministry of Nature and Environment, Mongolia

Japan International Cooperation Agency (JICA)
Japan Forest Technical Association (JAFTA)
Asia Air Survey Co., Ltd



Research Institute of Forestry & Wildlife (RIFW)
Ministry of Nature and Environment, Mongolia

LANDSAT Image (Cover Map (Topography No. 5) '90)



Scale 1:250,000

| | | | | |
|----|---|---|--|---|
| 10 | | | | 1 |
| 11 | 7 | 4 | | 2 |
| 12 | 8 | 5 | | 3 |
| | 9 | 6 | | |

Legend

- Mountain-Hill Forest
- Low-to-Mid Slope Forest of Summit
- Plateau/Terrace Forest
- Oak-birch Forest
- Khirshik Forest
- Flood Plain
- Water Body
- Open-air Mining
- Water Body (Pond) Resin and its Reservoir
- Boundary of Selenge Aimek

This map was completed in January, 1995 based on the interpretation of LANDSAT images shown on the following table

| Path-Row | Date of Data Collection |
|----------|--------------------------|
| 130-28 | Sep. 24 '89, Dec. 05 '89 |
| 131-28 | Jan. 18 '91, Oct. 17 '91 |
| 131-28 | Sep. 07 '89, Sep. 10 '90 |
| 132-25 | Aug. 21 '89, May 11 '90 |
| | May 17 '90 |
| 132-28 | Jan. 18 '89, Sep. 17 '90 |
| 133-25 | Sep. 27 '89, May 19 '90 |
| 133-28 | Nov. 19 '90, Oct. 15 '92 |