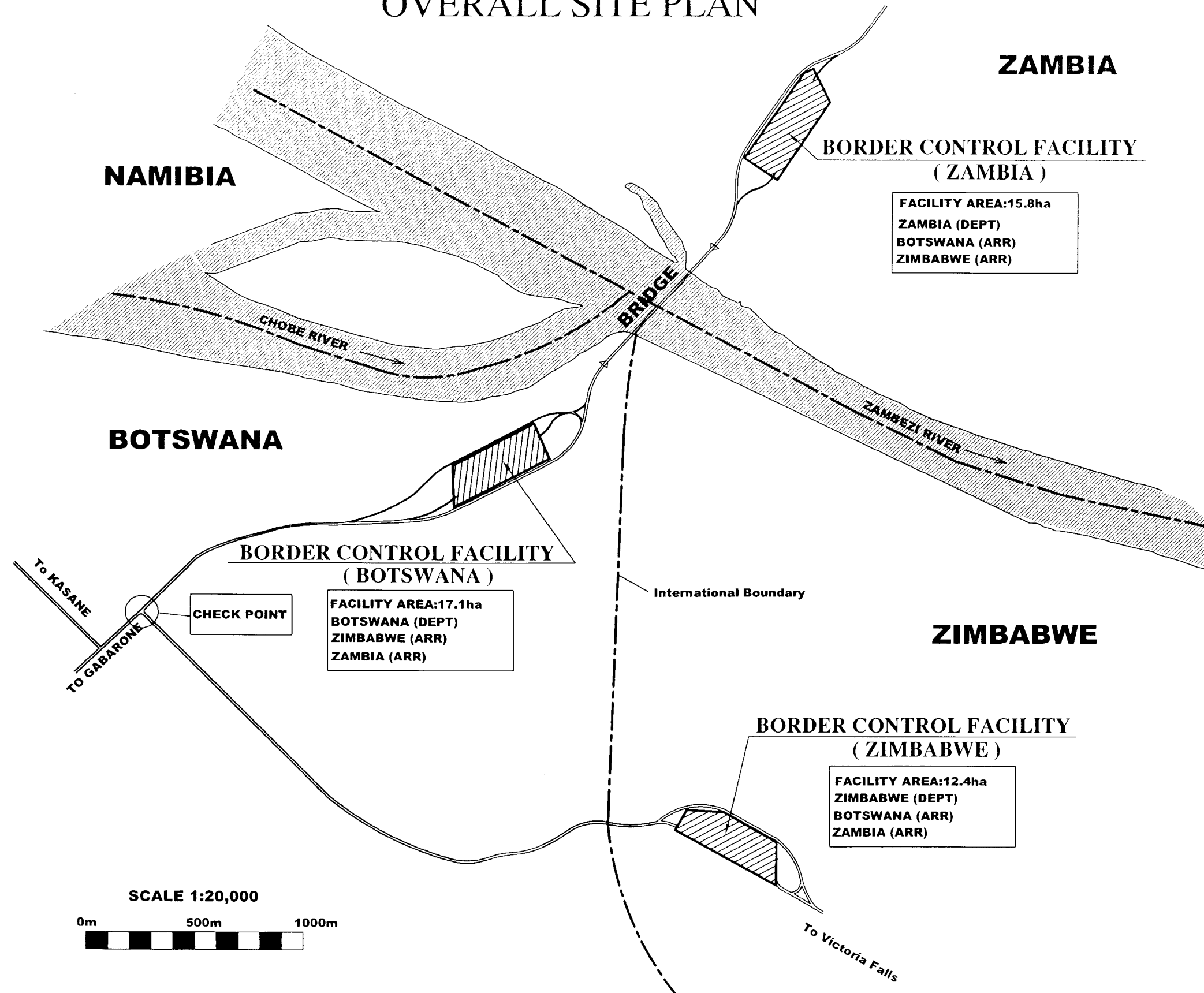



BORDER CONTROL FACILITIES (PACKAGE-2) OVERALL SITE PLAN



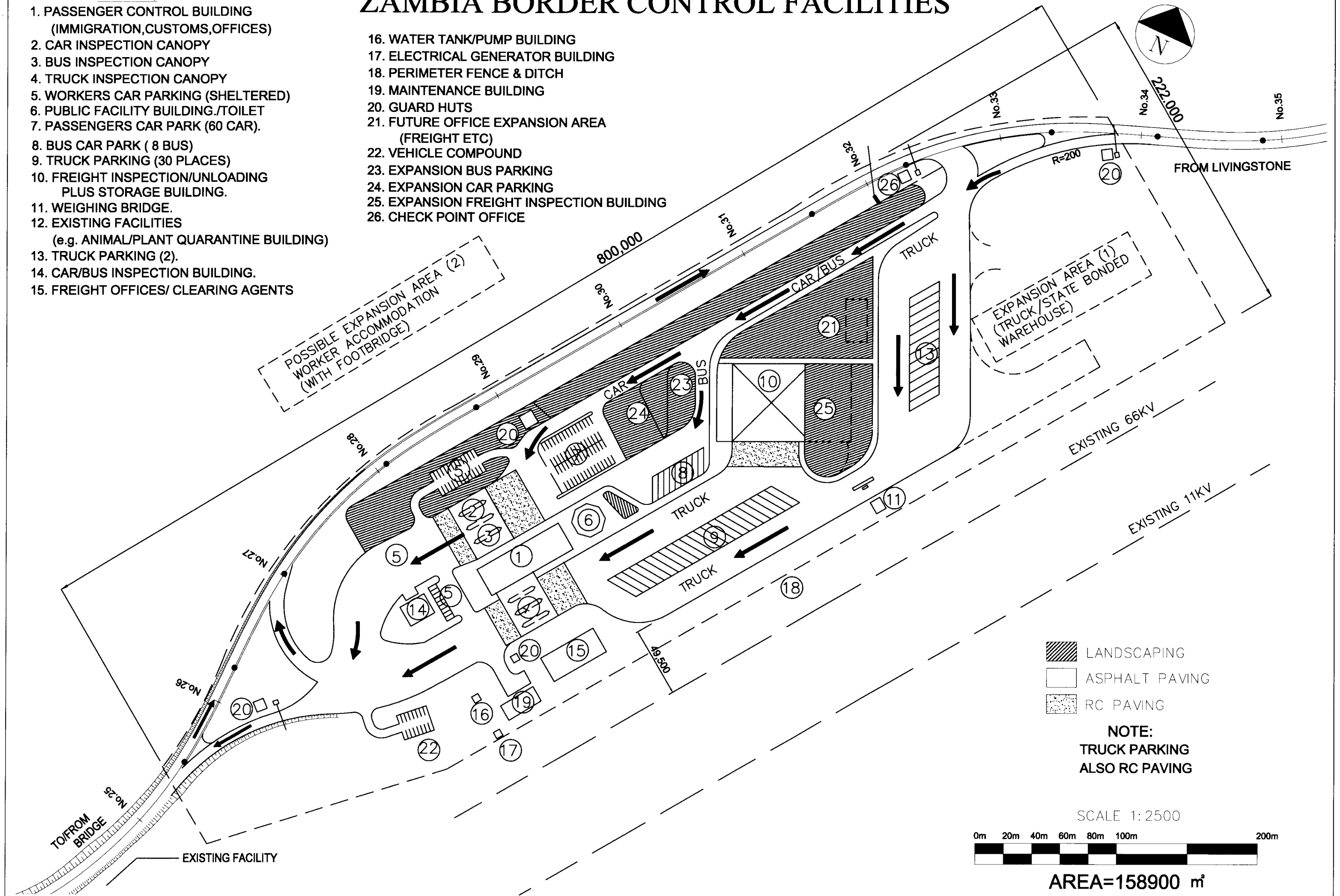
PROJECT NAME	IMPLEMENTATION AGENCY	EXECUTING AGENCY	JICA STUDY TEAM	DRAWING TITLE	DWG NO.
THE FEASIBILITY STUDY ON THE PROPOSED KAZUNGULA BRIDGE OVER THE ZAMBEZI RIVER BETWEEN BOTSWANA AND ZAMBIA	 JAPAN INTERNATIONAL COOPERATION AGENCY (JICA)	MINISTRY OF WORKS, TRANSPORT AND COMMUNICATIONS REPUBLIC OF BOTSWANA MINISTRY OF WORKS AND SUPPLY REPUBLIC OF ZAMBIA	NIPPON KOEI CO.,LTD. ORIENTAL CONSULTANTS CO.,LTD	BORDER CONTROL FACILITIES (PACKAGE-2) OVERALL SITE PLAN	BF/001

NOTES:

1. PASSENGER CONTROL BUILDING
(IMMIGRATION,CUSTOMS,OFFICES)
2. CAR INSPECTION CANOPY
3. BUS INSPECTION CANOPY
4. TRUCK INSPECTION CANOPY
5. WORKERS CAR PARKING (SHELTERED)
6. PUBLIC FACILITY BUILDING./TOILET
7. PASSENGERS CAR PARK (60 CAR).
8. BUS CAR PARK (8 BUS)
9. TRUCK PARKING (30 PLACES)
10. FREIGHT INSPECTION/UNLOADING
PLUS STORAGE BUILDING.
11. WEIGHING BRIDGE.
12. EXISTING FACILITIES
(e.g. ANIMAL/PLANT QUARANTINE BUILDING)
13. TRUCK PARKING (2).
14. CAR/BUS INSPECTION BUILDING.
15. FREIGHT OFFICES/ CLEARING AGENTS

ZAMBIA BORDER CONTROL FACILITIES

16. WATER TANK/PUMP BUILDING
17. ELECTRICAL GENERATOR BUILDING
18. PERIMETER FENCE & DITCH
19. MAINTENANCE BUILDING
20. GUARD HUTS
21. FUTURE OFFICE EXPANSION AREA
(FREIGHT ETC)
22. VEHICLE COMPOUND
23. EXPANSION BUS PARKING
24. EXPANSION CAR PARKING
25. EXPANSION FREIGHT INSPECTION BUILDING
26. CHECK POINT OFFICE



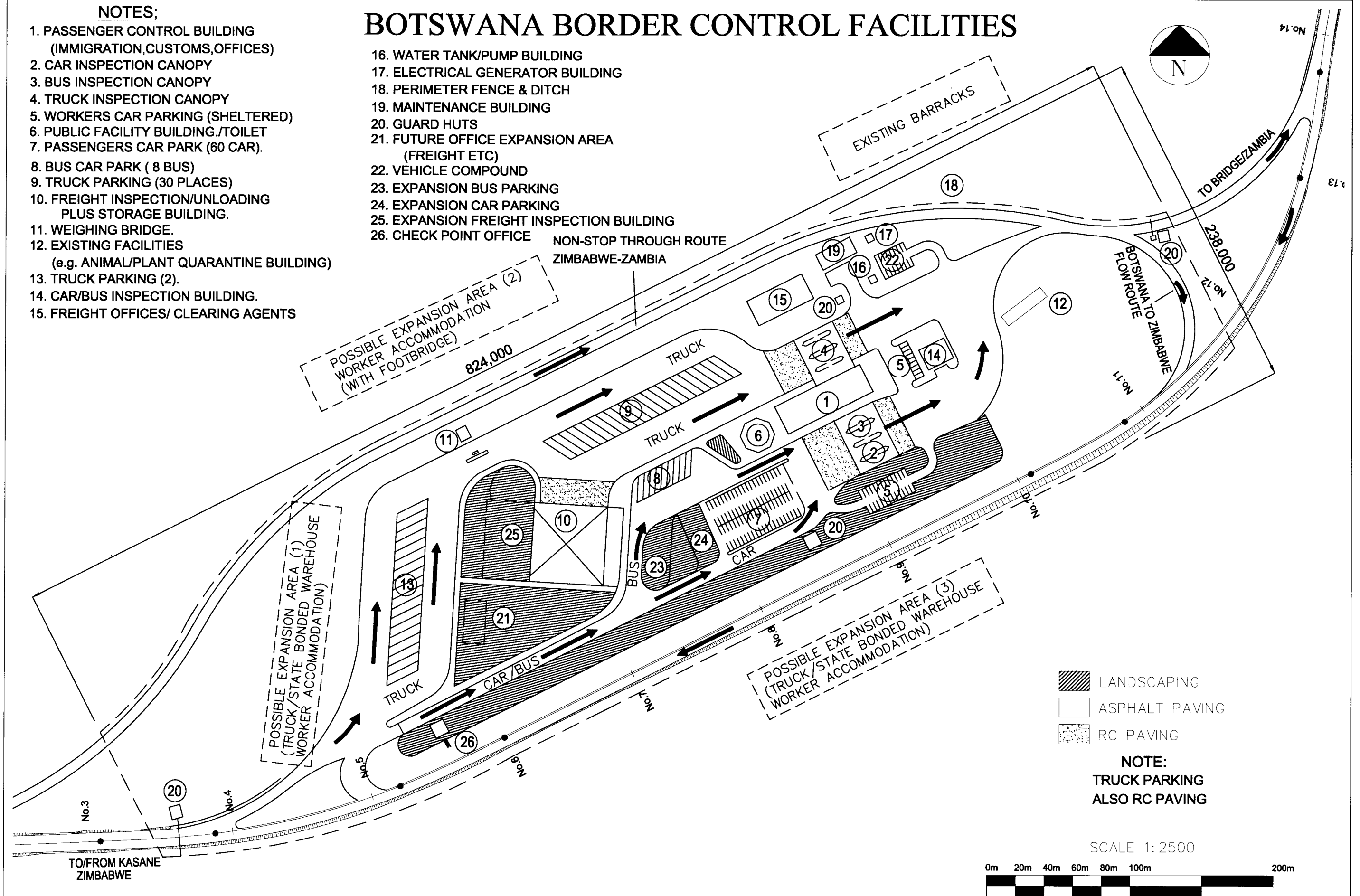
PROJECT NAME	IMPLEMENTATION AGENCY	EXECUTING AGENCY	JICA STUDY TEAM	DRAWING TITLE	DWG NO.
THE FEASIBILITY STUDY ON THE PROPOSED KAZUNGULA BRIDGE OVER THE ZAMBEZI RIVER BETWEEN BOTSWANA AND ZAMBIA	JICA JAPAN INTERNATIONAL COOPERATION AGENCY (JICA)	MINISTRY OF WORKS, TRANSPORT AND COMMUNICATIONS REPUBLIC OF BOTSWANA MINISTRY OF WORKS AND SUPPLY REPUBLIC OF ZAMBIA	NIPPON KOEI CO.,LTD. ORIENTAL CONSULTANTS CO.,LTD	ZAMBIA BORDER CONTROL FACILITIES	BF/002

NOTES;

1. PASSENGER CONTROL BUILDING
(IMMIGRATION,CUSTOMS,OFFICES)
2. CAR INSPECTION CANOPY
3. BUS INSPECTION CANOPY
4. TRUCK INSPECTION CANOPY
5. WORKERS CAR PARKING (SHELTERED)
6. PUBLIC FACILITY BUILDING./TOILET
7. PASSENGERS CAR PARK (60 CAR).
8. BUS CAR PARK (8 BUS)
9. TRUCK PARKING (30 PLACES)
10. FREIGHT INSPECTION/UNLOADING
PLUS STORAGE BUILDING.
11. WEIGHING BRIDGE.
12. EXISTING FACILITIES
(e.g. ANIMAL/PLANT QUARANTINE BUILDING)
13. TRUCK PARKING (2).
14. CAR/BUS INSPECTION BUILDING.
15. FREIGHT OFFICES/ CLEARING AGENTS

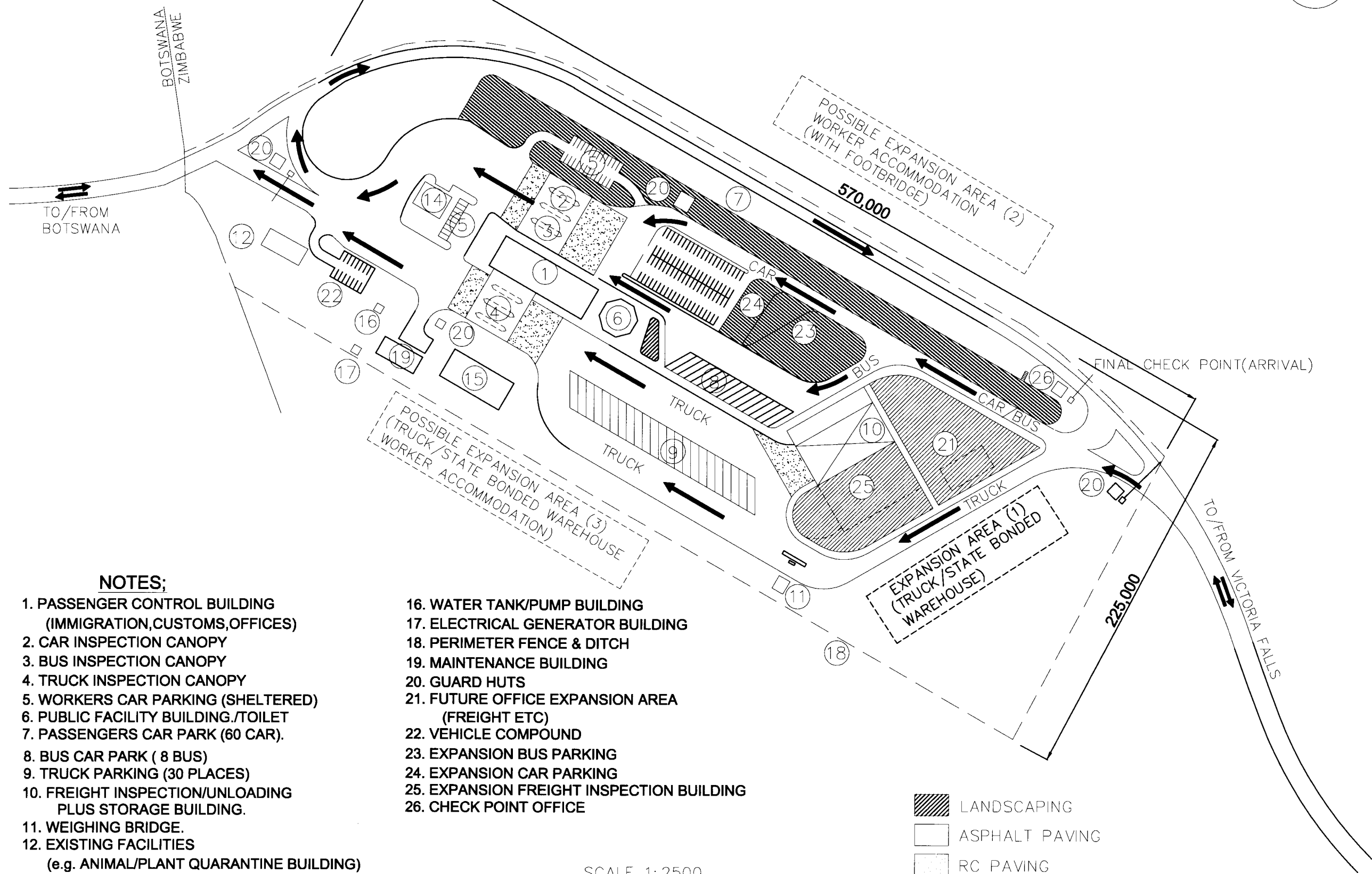
BOTSWANA BORDER CONTROL FACILITIES

16. WATER TANK/PUMP BUILDING
17. ELECTRICAL GENERATOR BUILDING
18. PERIMETER FENCE & DITCH
19. MAINTENANCE BUILDING
20. GUARD HUTS
21. FUTURE OFFICE EXPANSION AREA
(FREIGHT ETC)
22. VEHICLE COMPOUND
23. EXPANSION BUS PARKING
24. EXPANSION CAR PARKING
25. EXPANSION FREIGHT INSPECTION BUILDING
26. CHECK POINT OFFICE



PROJECT NAME	IMPLEMENTATION AGENCY	EXECUTING AGENCY	JICA STUDY TEAM	DRAWING TITLE	DWG NO.
THE FEASIBILITY STUDY ON THE PROPOSED KAZUNGULA BRIDGE OVER THE ZAMBEZI RIVER BETWEEN BOTSWANA AND ZAMBIA	JICA JAPAN INTERNATIONAL COOPERATION AGENCY (JICA)	MINISTRY OF WORKS, TRANSPORT AND COMMUNICATIONS REPUBLIC OF BOTSWANA MINISTRY OF WORKS AND SUPPLY REPUBLIC OF ZAMBIA	NIPPON KOEI CO.,LTD. ORIENTAL CONSULTANTS CO.,LTD	BOTSWANA BORDER CONTROL FACILITIES	BF/003

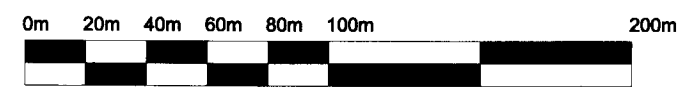
ZIMBABWE BORDER CONTROL FACILITIES



NOTES;

- | | |
|--|---|
| 1. PASSENGER CONTROL BUILDING
(IMMIGRATION,CUSTOMS,OFFICES) | 16. WATER TANK/PUMP BUILDING |
| 2. CAR INSPECTION CANOPY | 17. ELECTRICAL GENERATOR BUILDING |
| 3. BUS INSPECTION CANOPY | 18. PERIMETER FENCE & DITCH |
| 4. TRUCK INSPECTION CANOPY | 19. MAINTENANCE BUILDING |
| 5. WORKERS CAR PARKING (SHELTERED) | 20. GUARD HUTS |
| 6. PUBLIC FACILITY BUILDING./TOILET | 21. FUTURE OFFICE EXPANSION AREA
(FREIGHT ETC) |
| 7. PASSENGERS CAR PARK (60 CAR). | 22. VEHICLE COMPOUND |
| 8. BUS CAR PARK (8 BUS) | 23. EXPANSION BUS PARKING |
| 9. TRUCK PARKING (30 PLACES) | 24. EXPANSION CAR PARKING |
| 10. FREIGHT INSPECTION/UNLOADING
PLUS STORAGE BUILDING. | 25. EXPANSION FREIGHT INSPECTION BUILDING |
| 11. WEIGHING BRIDGE. | 26. CHECK POINT OFFICE |
| 12. EXISTING FACILITIES
(e.g. ANIMAL/PLANT QUARANTINE BUILDING) | |
| 13. TRUCK PARKING (2). | |
| 14. CAR/BUS INSPECTION BUILDING. | |
| 15. FREIGHT OFFICES/ CLEARING AGENTS | |

SCALE 1:2500

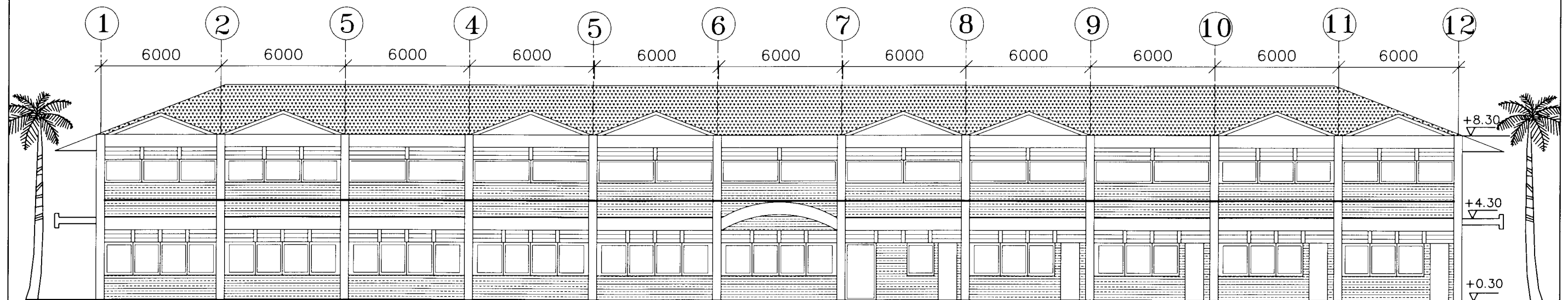


- LANDSCAPING
- ASPHALT PAVING
- RC PAVING

NOTE:
TRUCK PARKING
ALSO RC PAVING

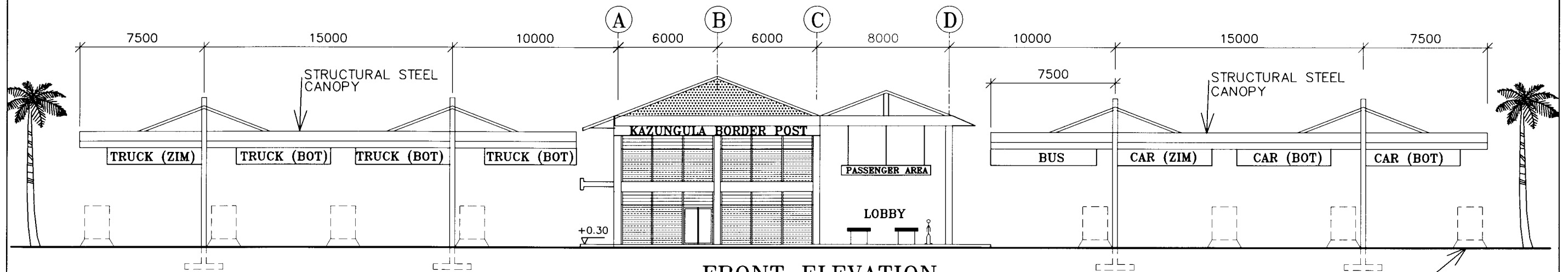
AREA=127400 m²

PROJECT NAME	IMPLEMENTATION AGENCY	EXECUTING AGENCY	JICA STUDY TEAM	DRAWING TITLE	DWG NO.
THE FEASIBILITY STUDY ON THE PROPOSED KAZUNGULA BRIDGE OVER THE ZAMBEZI RIVER BETWEEN BOTSWANA AND ZAMBIA	JAPAN INTERNATIONAL COOPERATION AGENCY (JICA)	MINISTRY OF WORKS, TRANSPORT AND COMMUNICATIONS REPUBLIC OF BOTSWANA MINISTRY OF WORKS AND SUPPLY REPUBLIC OF ZAMBIA	NIPPON KOEI CO.,LTD. ORIENTAL CONSULTANTS CO.,LTD	ZIMBABWE BORDER CONTROL FACILITIES	BF/004



SIDE ELEVATION

SCALE 1: 200
0mm 5000mm

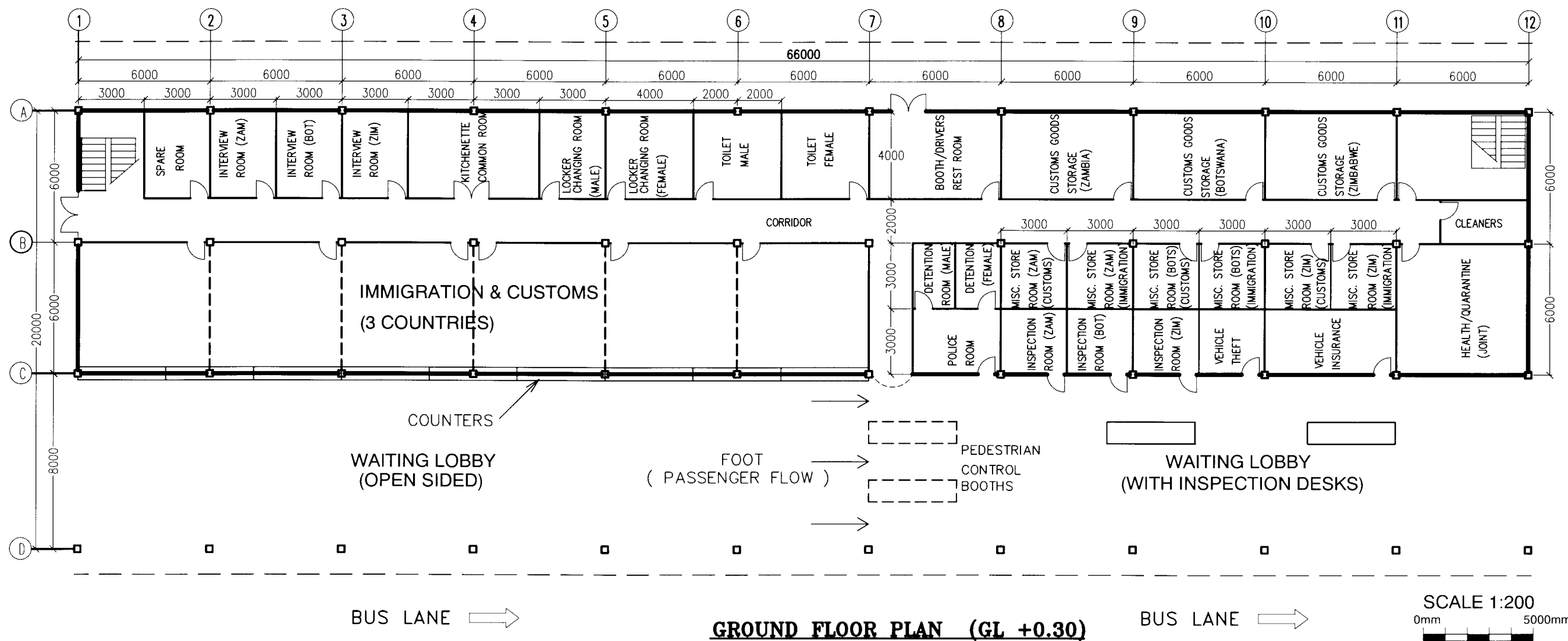
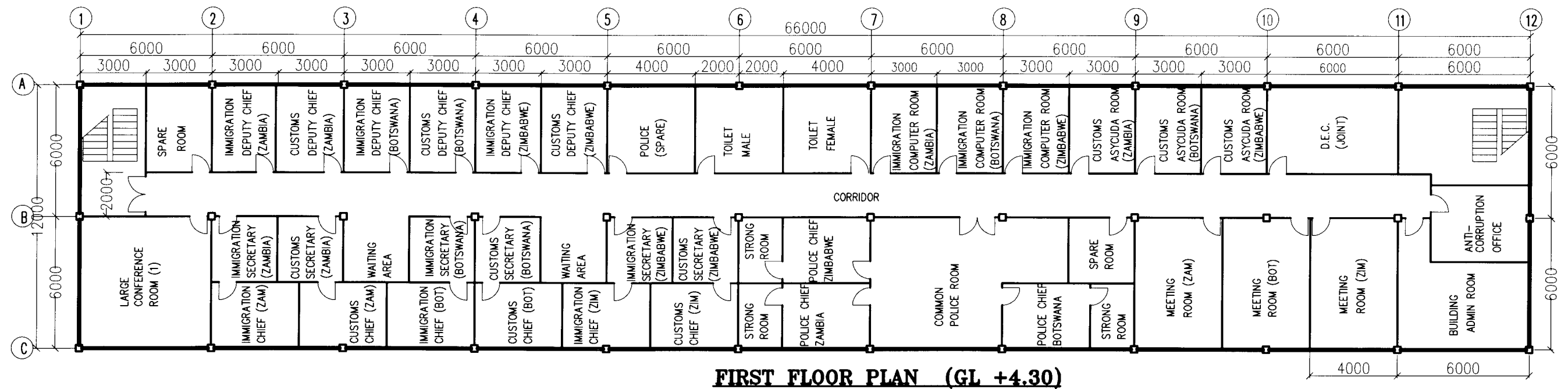



FRONT ELEVATION

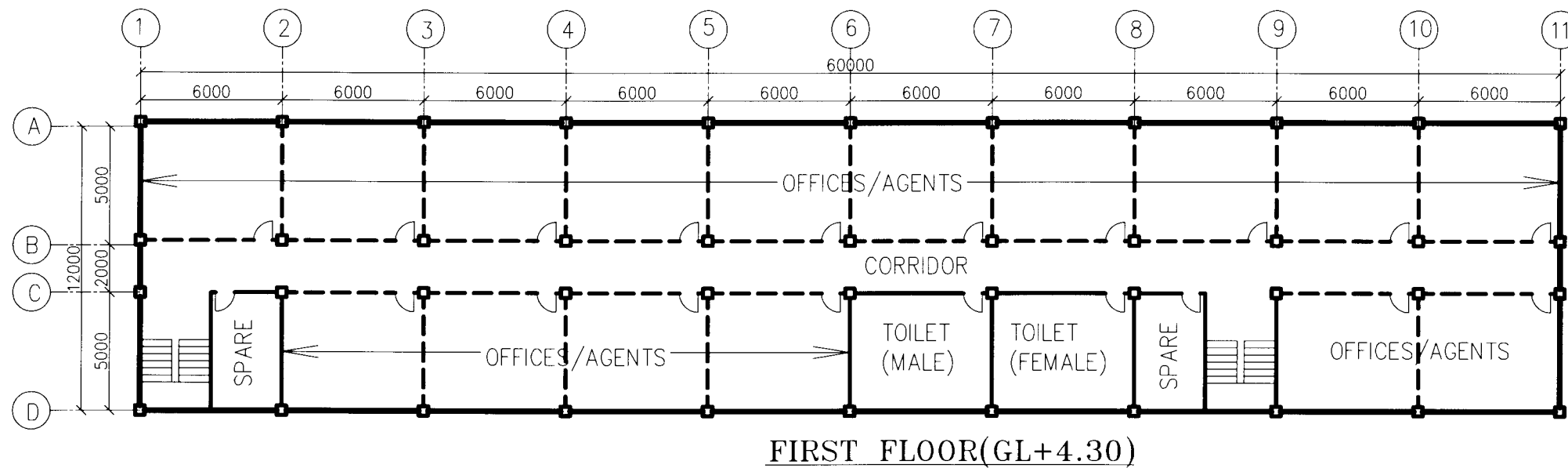
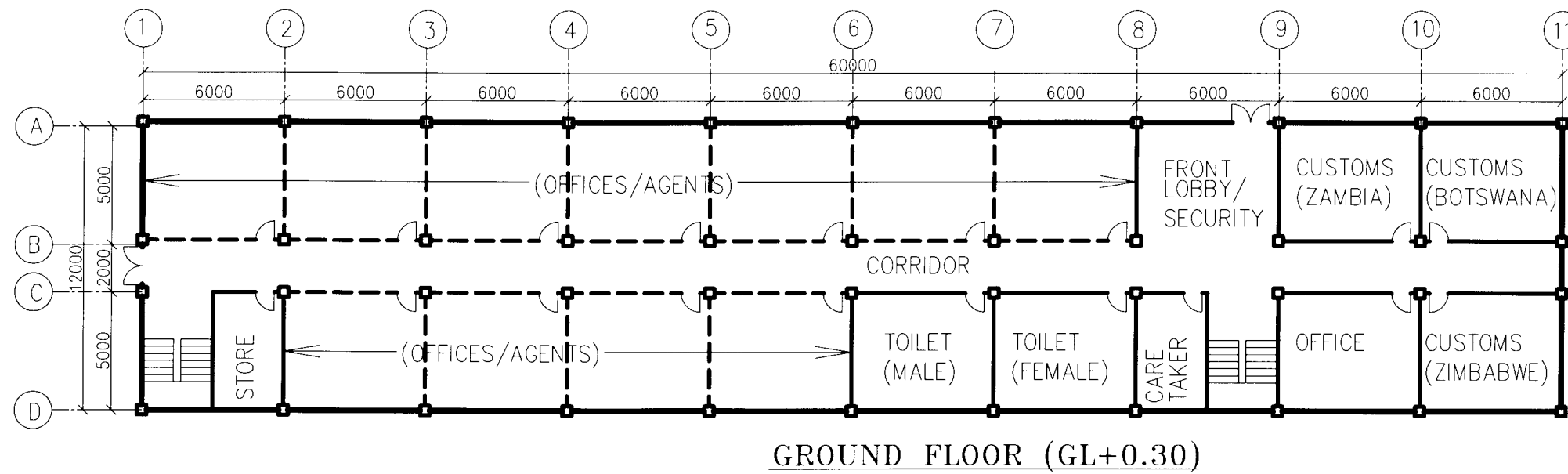
SCALE 1: 250
0mm 5000mm

FUTURE POSSIBLE BOOTHS

PROJECT NAME	IMPLEMENTATION AGENCY	EXECUTING AGENCY	JICA STUDY TEAM	DRAWING TITLE	DWG NO.
THE FEASIBILITY STUDY ON THE PROPOSED KAZUNGULA BRIDGE OVER THE ZAMBEZI RIVER BETWEEN BOTSWANA AND ZAMBIA	JICA JAPAN INTERNATIONAL COOPERATION AGENCY (JICA)	MINISTRY OF WORKS, TRANSPORT AND COMMUNICATIONS REPUBLIC OF BOTSWANA MINISTRY OF WORKS AND SUPPLY REPUBLIC OF ZAMBIA	NIPPON KOEI CO.,LTD. ORIENTAL CONSULTANTS CO.,LTD	PASSENGER CONTROL BUILDING (ELEVATIONS)	BF/005

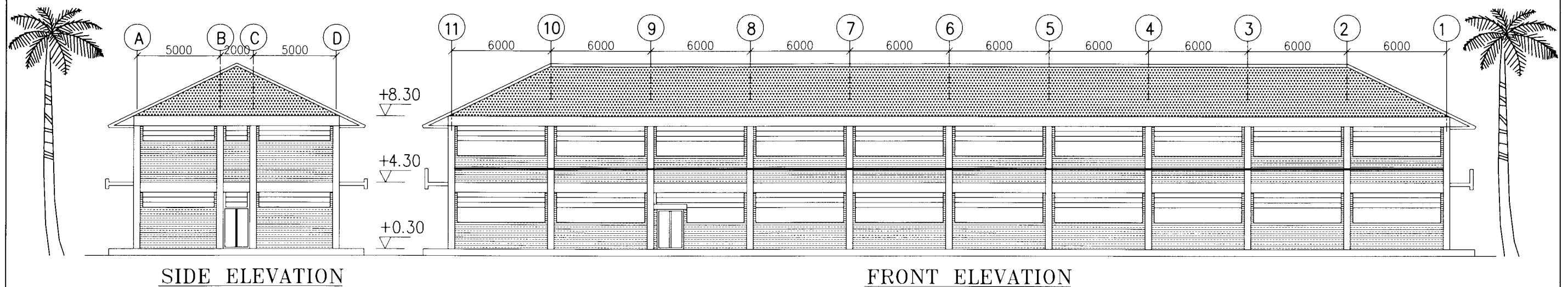


PROJECT NAME	IMPLEMENTATION AGENCY	EXECUTING AGENCY	JICA STUDY TEAM	DRAWING TITLE	DWG NO.
THE FEASIBILITY STUDY ON THE PROPOSED KAZUNGULA BRIDGE OVER THE ZAMBEZI RIVER BETWEEN BOTSWANA AND ZAMBIA	 JAPAN INTERNATIONAL COOPERATION AGENCY (JICA)	MINISTRY OF WORKS, TRANSPORT AND COMMUNICATIONS REPUBLIC OF BOTSWANA MINISTRY OF WORKS AND SUPPLY REPUBLIC OF ZAMBIA	NIPPON KOEI CO.,LTD. ORIENTAL CONSULTANTS CO.,LTD	PASSENGER CONTROL BUILDING (FLOOR PLANS)	BF/006

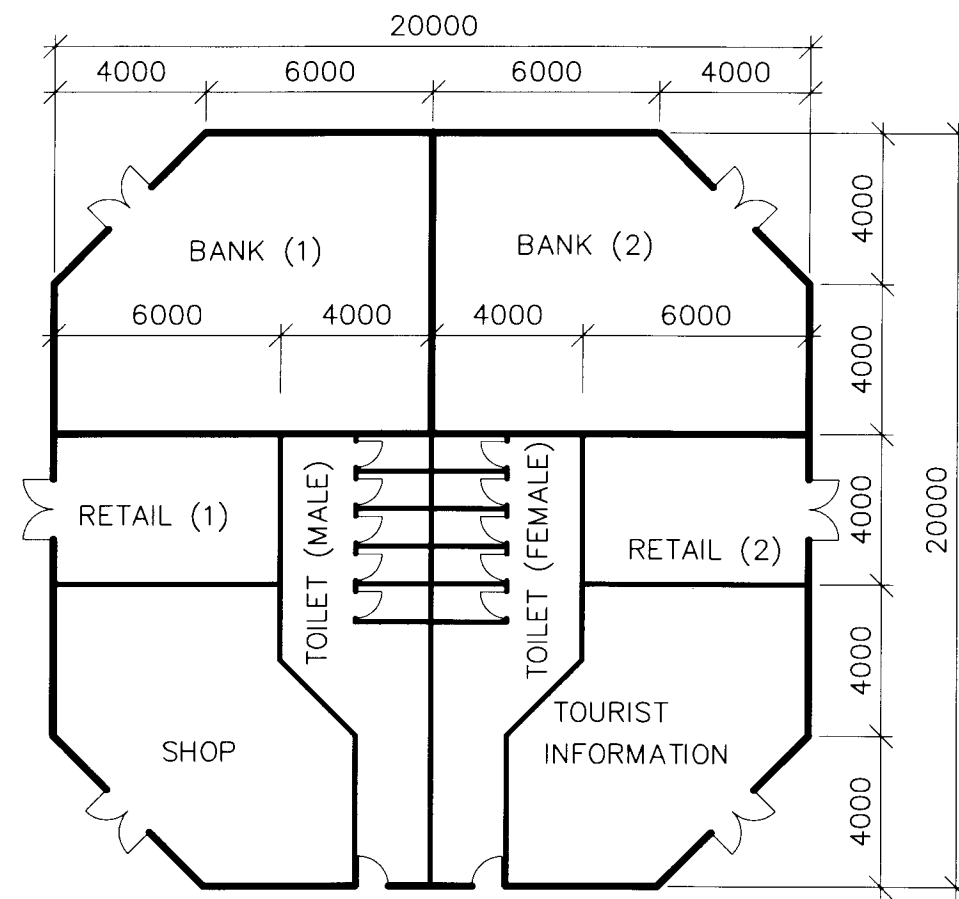


SCALE
(ALL AT 1:250)

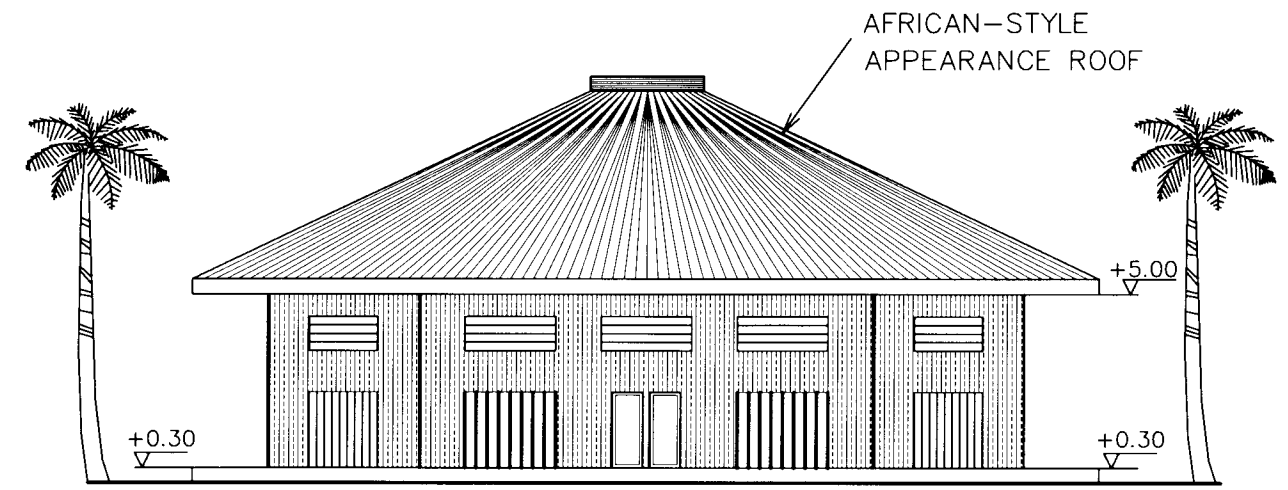
0mm 5000mm



PROJECT NAME	IMPLEMENTATION AGENCY	EXECUTING AGENCY	JICA STUDY TEAM	DRAWING TITLE	DWG NO.
THE FEASIBILITY STUDY ON THE PROPOSED KAZUNGULA BRIDGE OVER THE ZAMBEZI RIVER BETWEEN BOTSWANA AND ZAMBIA	JICA JAPAN INTERNATIONAL COOPERATION AGENCY (JICA)	MINISTRY OF WORKS, TRANSPORT AND COMMUNICATIONS REPUBLIC OF BOTSWANA MINISTRY OF WORKS AND SUPPLY REPUBLIC OF ZAMBIA	NIPPON KOEI CO.,LTD. ORIENTAL CONSULTANTS CO.,LTD	PROPOSED FREIGHT OFFICE AND AGENTS BUILDING.	BF/007




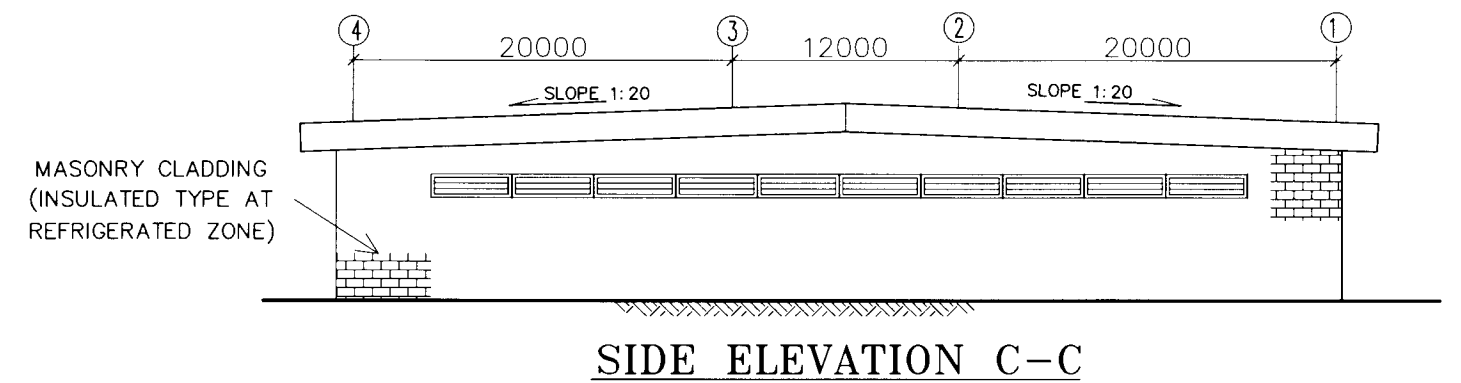
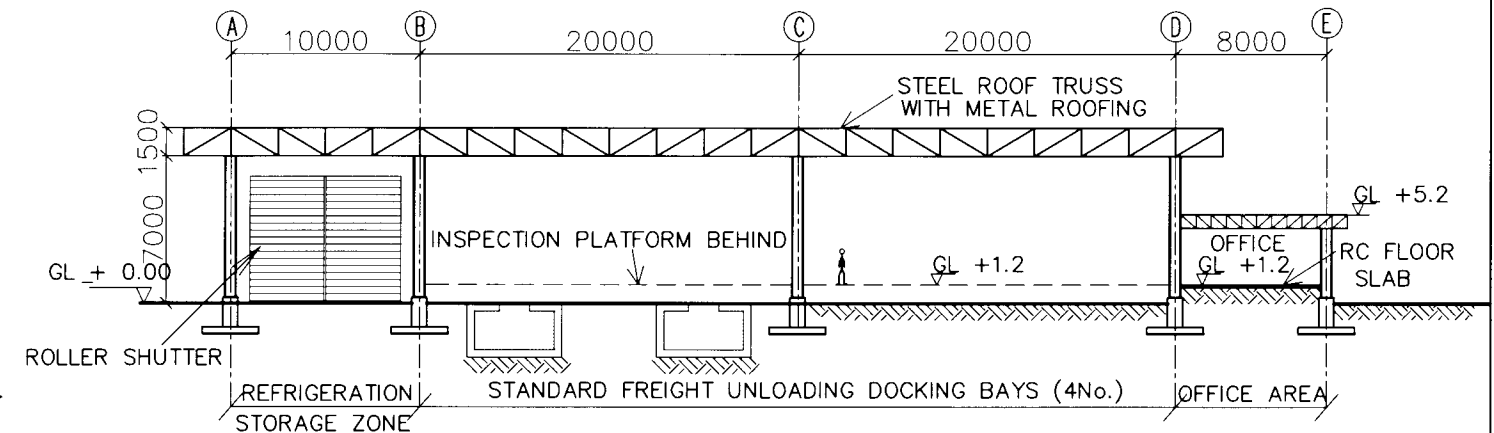
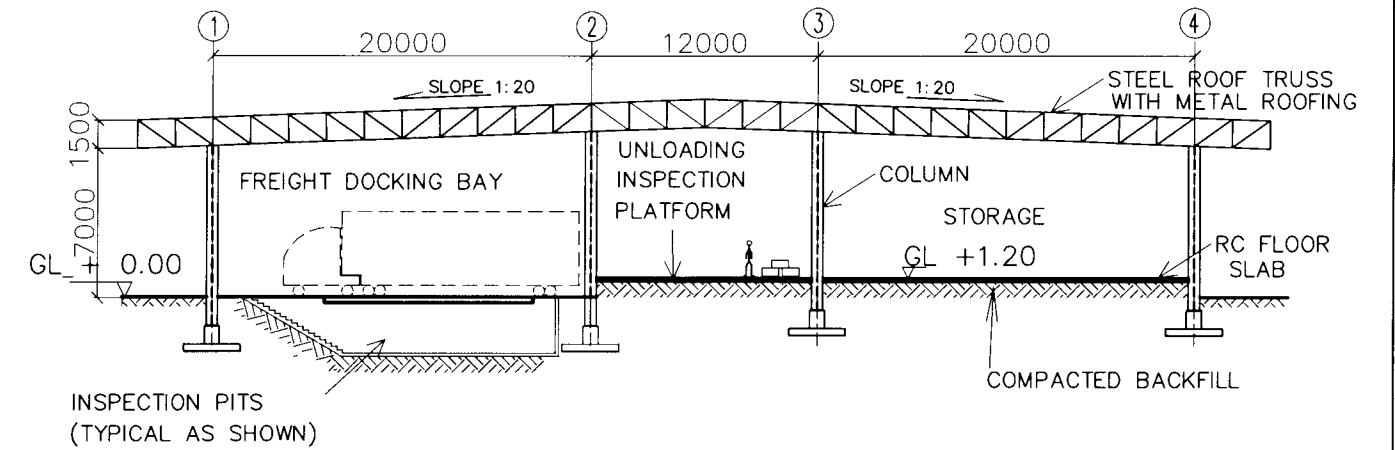
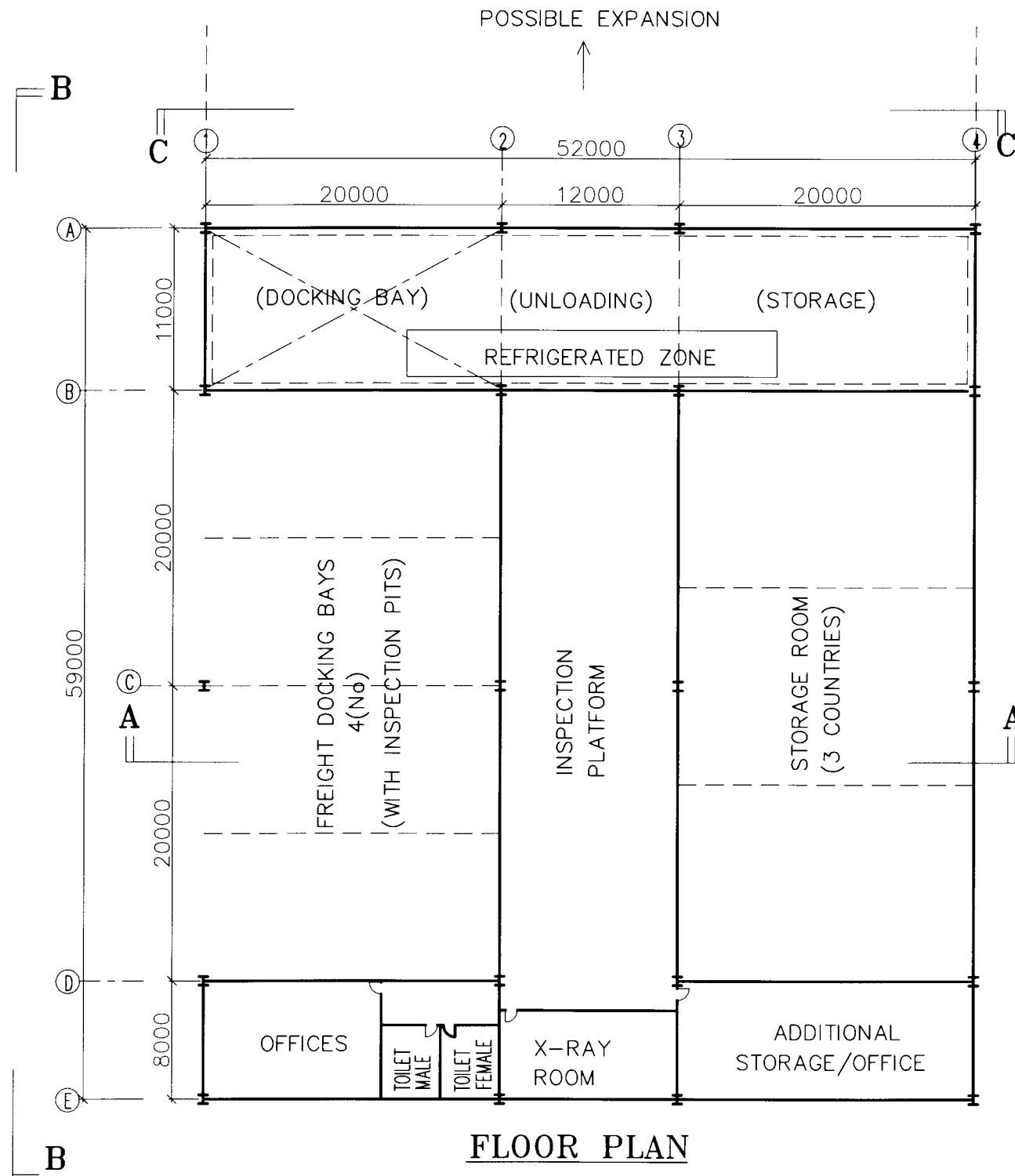
GROUND FLOOR PLAN



SIDE ELEVATION

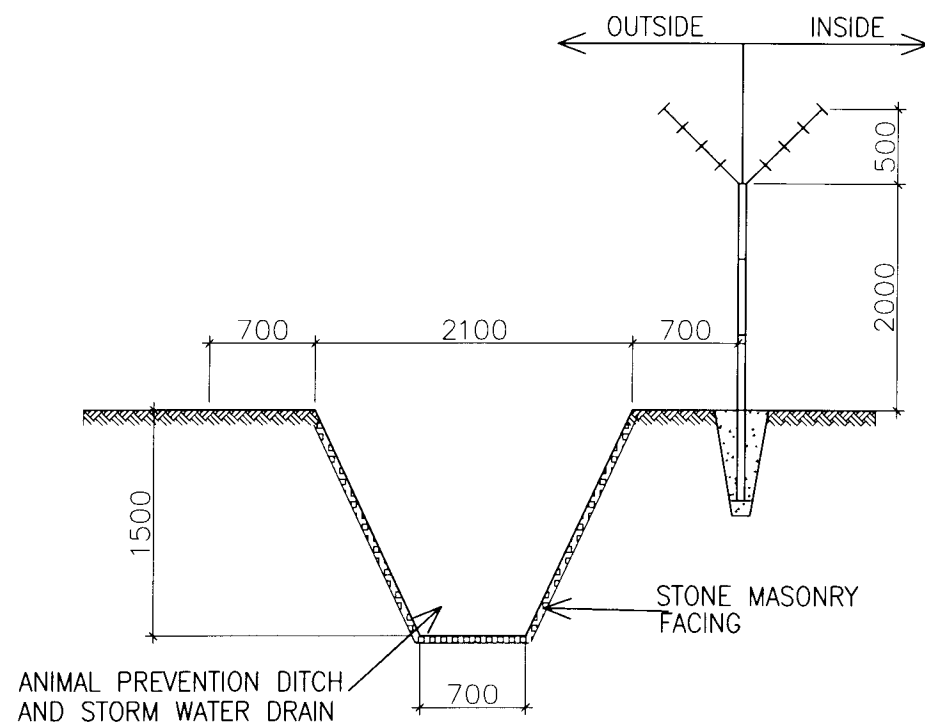
SCALE 1: 200
0mm 5000mm

PROJECT NAME	IMPLEMENTATION AGENCY	EXECUTING AGENCY	JICA STUDY TEAM	DRAWING TITLE	DWG NO.
THE FEASIBILITY STUDY ON THE PROPOSED KAZUNGULA BRIDGE OVER THE ZAMBEZI RIVER BETWEEN BOTSWANA AND ZAMBIA	 JAPAN INTERNATIONAL COOPERATION AGENCY (JICA)	MINISTRY OF WORKS, TRANSPORT AND COMMUNICATIONS REPUBLIC OF BOTSWANA MINISTRY OF WORKS AND SUPPLY REPUBLIC OF ZAMBIA	NIPPON KOEI CO.,LTD. ORIENTAL CONSULTANTS CO.,LTD	PUBLIC FACILITY BUILDING	BF/008

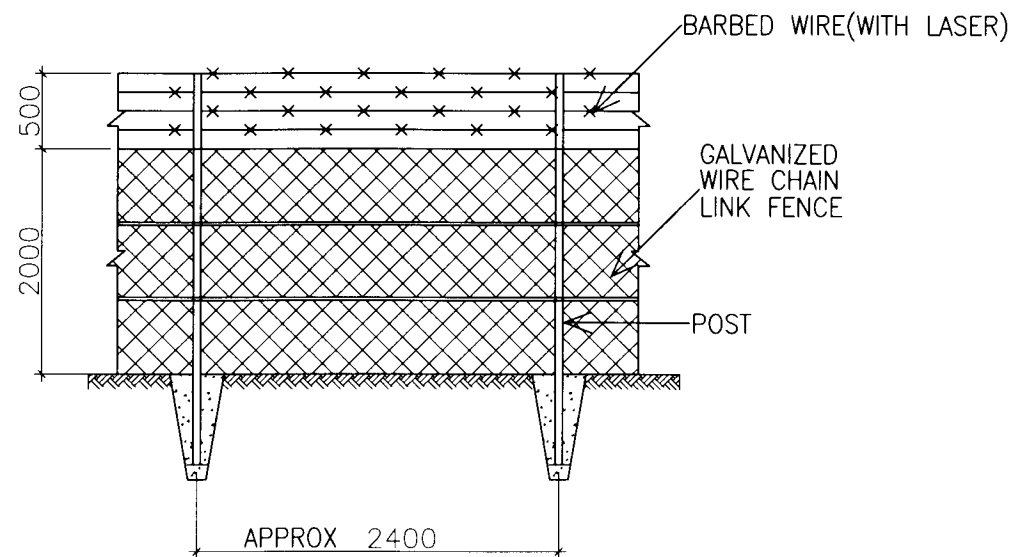


SCALE 1:400
0mm 500mm 1000mm

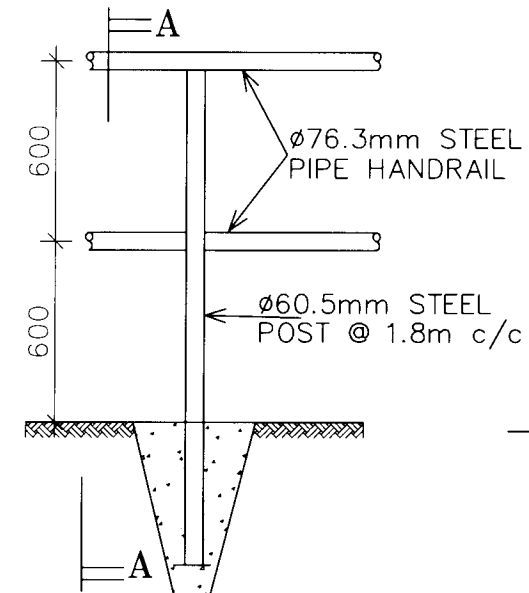
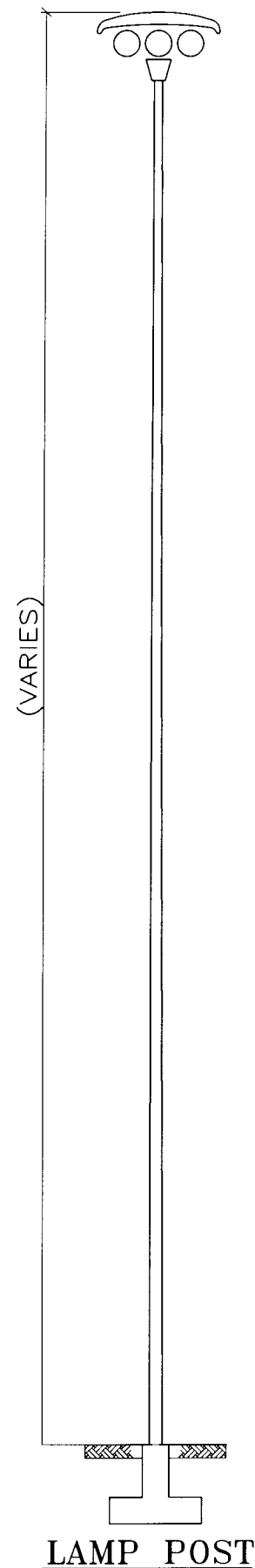
PROJECT NAME	IMPLEMENTATION AGENCY	EXECUTING AGENCY	JICA STUDY TEAM	DRAWING TITLE	DWG NO.
THE FEASIBILITY STUDY ON THE PROPOSED KAZUNGULA BRIDGE OVER THE ZAMBEZI RIVER BETWEEN BOTSWANA AND ZAMBIA	JICA JAPAN INTERNATIONAL COOPERATION AGENCY (JICA)	MINISTRY OF WORKS, TRANSPORT AND COMMUNICATIONS REPUBLIC OF BOTSWANA MINISTRY OF WORKS AND SUPPLY REPUBLIC OF ZAMBIA	NIPPON KOEI CO.,LTD. ORIENTAL CONSULTANTS CO.,LTD	TRUCK UNLOADING AND FREIGHT STORAGE BUILDING	BF/009



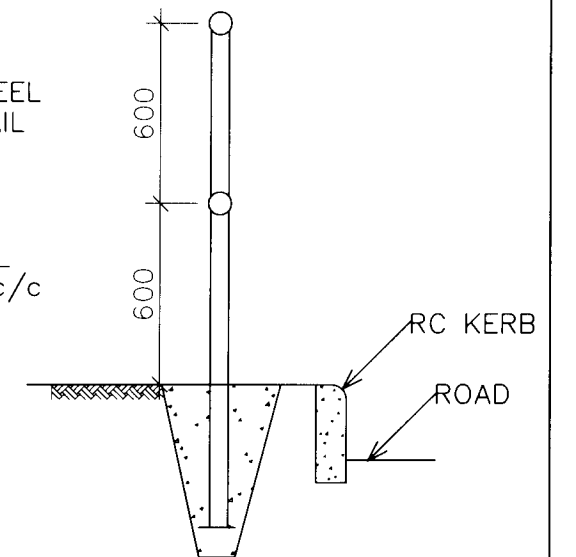
SECURITY FENCE/PERIMETER DITCH (SECTION)
SCALE 1:50



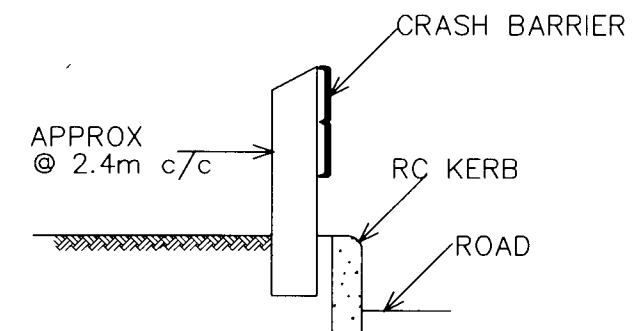
SECURITY FENCE (ELEVATION)
SCALE 1:50



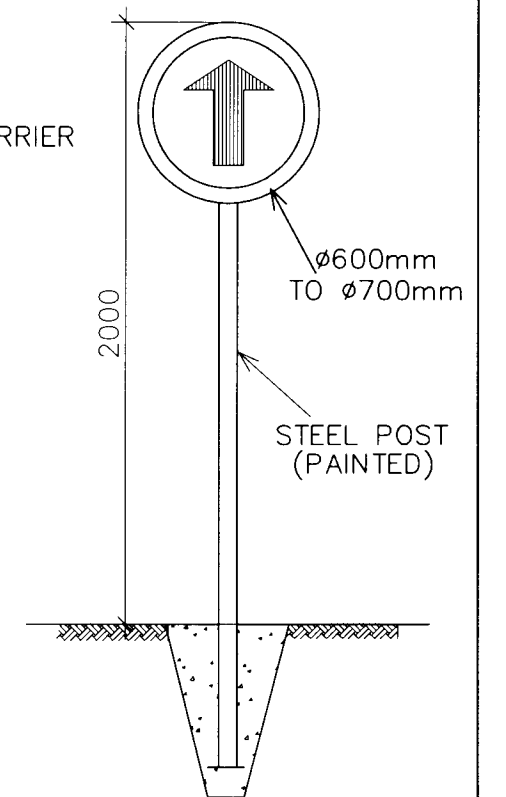
TYPICAL HANDRAIL
SCALE 1:25



SECTION A- A
SCALE 1:25



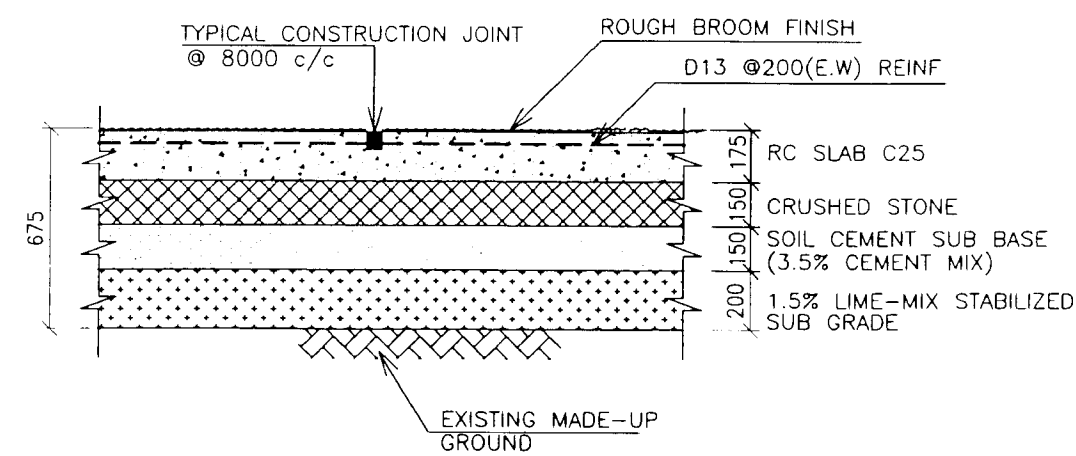
TYPICAL ROADSIDE CRASH BARRIER
SCALE 1:25



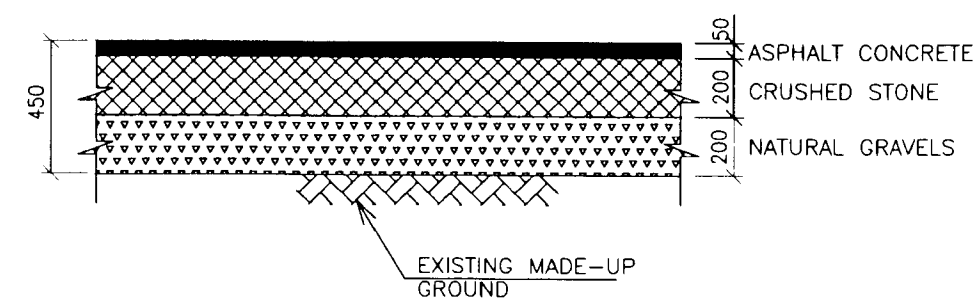
STANDARD ROAD SIGN
SCALE 1:25

PROJECT NAME	IMPLEMENTATION AGENCY	EXECUTING AGENCY	JICA STUDY TEAM	DRAWING TITLE	DWG NO.
THE FEASIBILITY STUDY ON THE PROPOSED KAZUNGULA BRIDGE OVER THE ZAMBEZI RIVER BETWEEN BOTSWANA AND ZAMBIA	JICA JAPAN INTERNATIONAL COOPERATION AGENCY (JICA)	MINISTRY OF WORKS, TRANSPORT AND COMMUNICATIONS REPUBLIC OF BOTSWANA MINISTRY OF WORKS AND SUPPLY REPUBLIC OF ZAMBIA	NIPPON KOEI CO.,LTD. ORIENTAL CONSULTANTS CO.,LTD	FENCING & ROAD FURNITURE (TYPICAL DETAILS)	BF/010


TYPICAL RC SLAB PAVING (ZAMBIA,BOTSWANA,ZIMBABWE)



ASPHALT SURFACE PAVEMENT (ZAMBIA,BOTSWANA,ZIMBABWE)



SCALE 1:25

PROJECT NAME	IMPLEMENTATION AGENCY	EXECUTING AGENCY	JICA STUDY TEAM	DRAWING TITLE	DWG NO.
THE FEASIBILITY STUDY ON THE PROPOSED KAZUNGULA BRIDGE OVER THE ZAMBEZI RIVER BETWEEN BOTSWANA AND ZAMBIA	 JAPAN INTERNATIONAL COOPERATION AGENCY (JICA)	MINISTRY OF WORKS, TRANSPORT AND COMMUNICATIONS REPUBLIC OF BOTSWANA MINISTRY OF WORKS AND SUPPLY REPUBLIC OF ZAMBIA	NIPPON KOEI CO.,LTD. ORIENTAL CONSULTANTS CO.,LTD	PARKING AREA TYPICAL PAVING DETAILS	BF/011