

AGENCE JAPONAISE DE COOPERATION INTERNATIONALE (JICA)
DIRECTION GÉNÉRALE
DU GÉNIE RURAL
MINISTÈRE DE L'AGRICULTURE
RÉPUBLIQUE TUNISIENNE

ÉTUDE DE CONCEPTION DÉTAILLÉE
POUR
LE PROJET D'AMÉLIORATION EN LAIDES
DES
CARRÉS
DE
VOIRIE DE LA ZONE DE CONCEPTION DÉTAILLÉE

JICA LIBRARY

J1164530(6)

JICA
417
618
SSS
BRARY

**AGENCE JAPONAISE DE COOPERATION INTERNATIONALE(JICA)
DIRECTION GÉNÉRALE
DU GÉNIE RURAL
MINISTÈRE DE L'AGRICULTURE
RÉPUBLIQUE TUNISIENNE**

**ÉTUDE DE CONCEPTION DÉTAILLÉE
POUR
LE PROJET D'APPROVISIONNEMENT EN EAU DES
ZONES RURALES
EN RÉPUBLIQUE TUNISIENNE**

**RAPPORT FINAL
VOLUME III RAPPORT DE CONCEPTION DÉTAILLÉE**

PARTIE 2 PLANS DE PROFIL

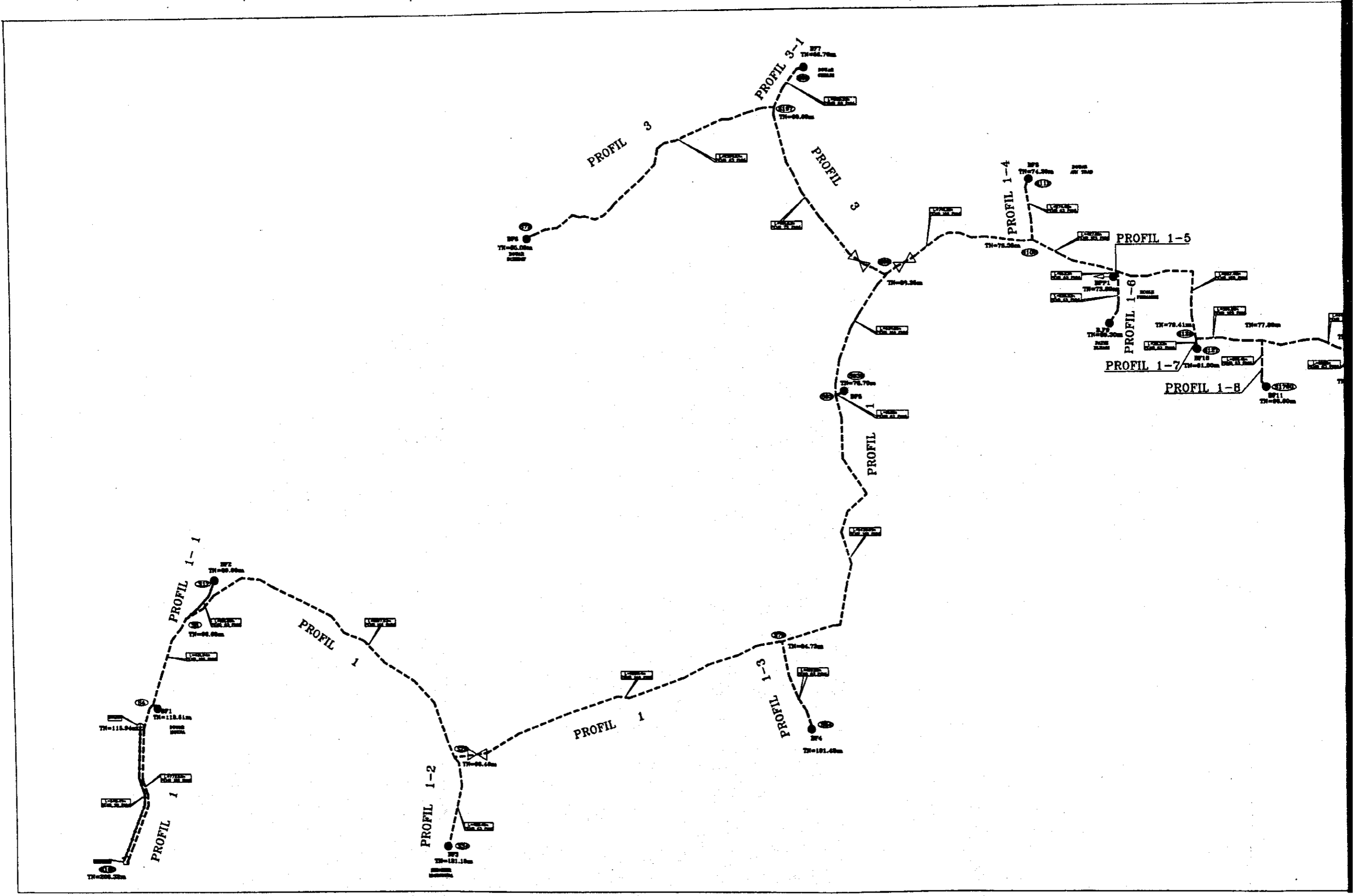
**GOUVERNORAT BIZERTE
RAPPORT SUR TERGULECHE**

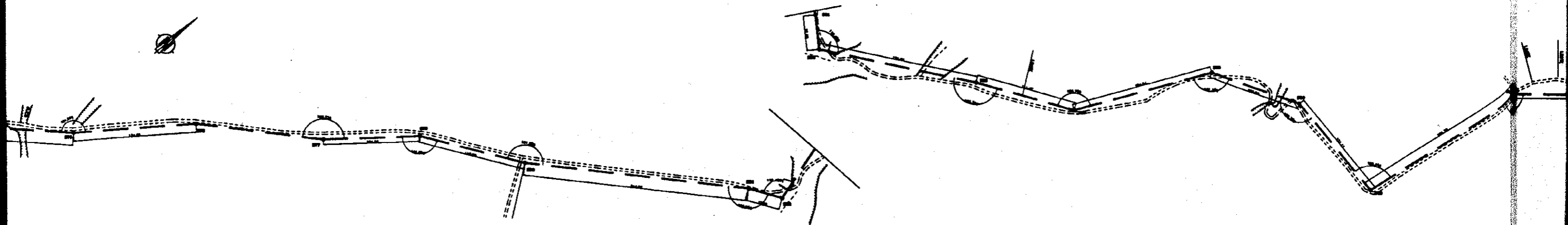
MARS 2001

**NIPPON KOEI CO.,LTD.
TAIYO CONSULTANTS CO.,LTD.**

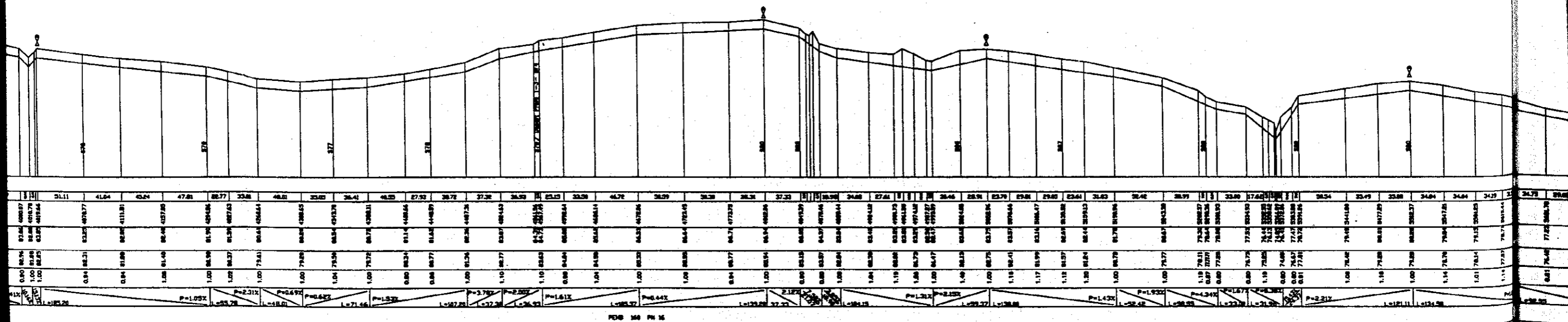


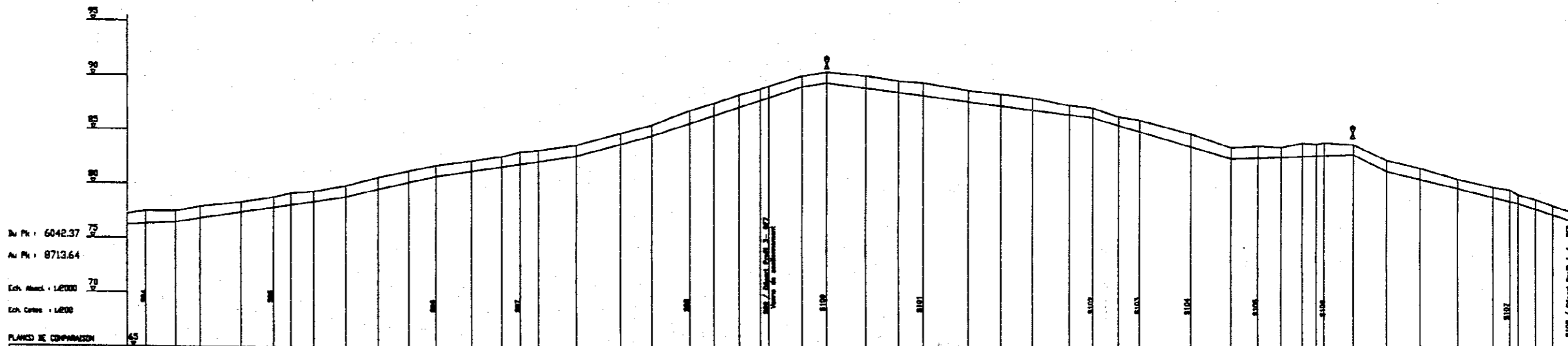
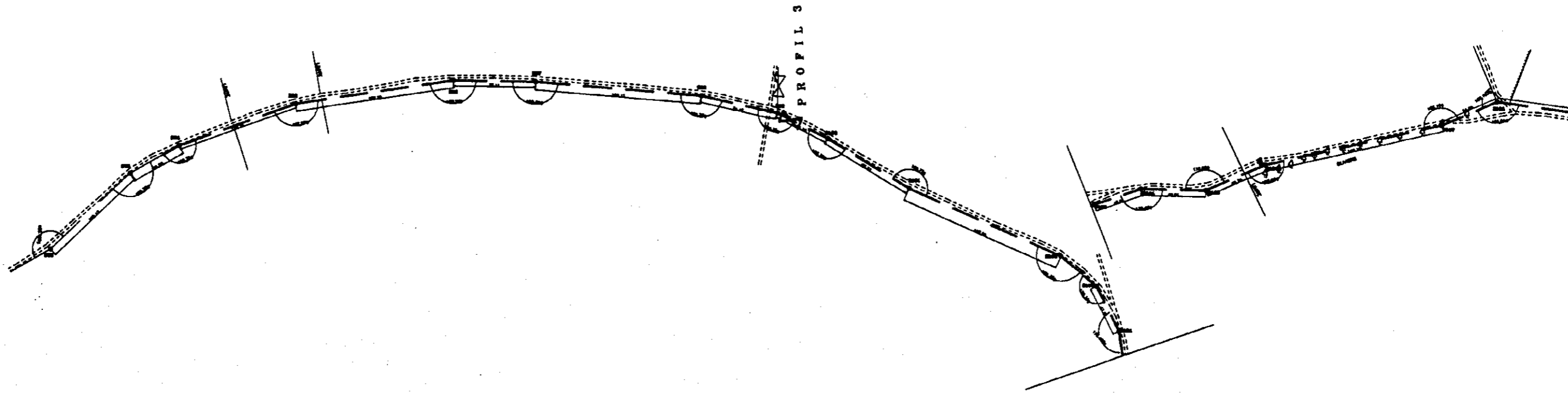
1164530(6)





PROFIL 1 (suite)

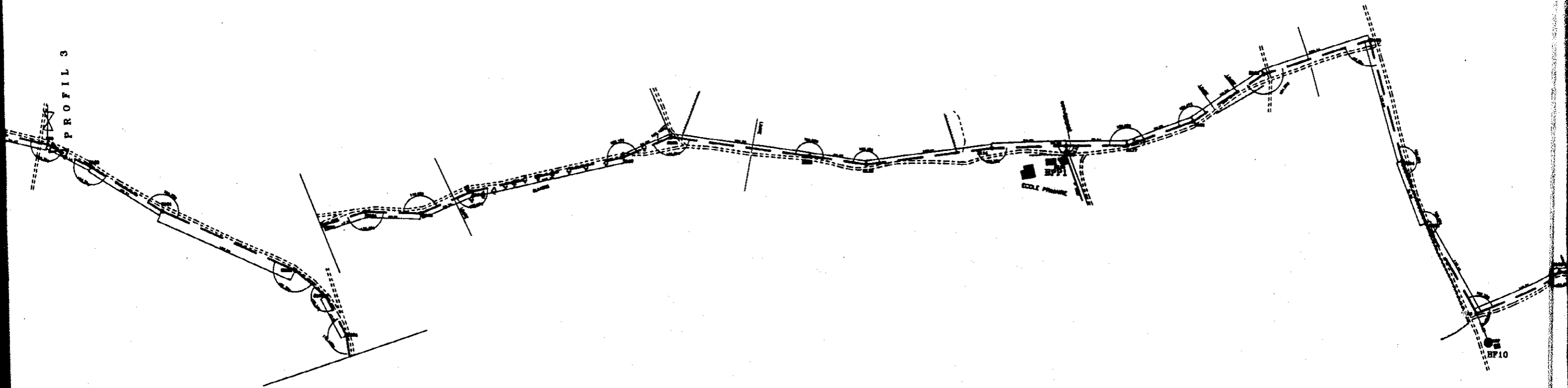




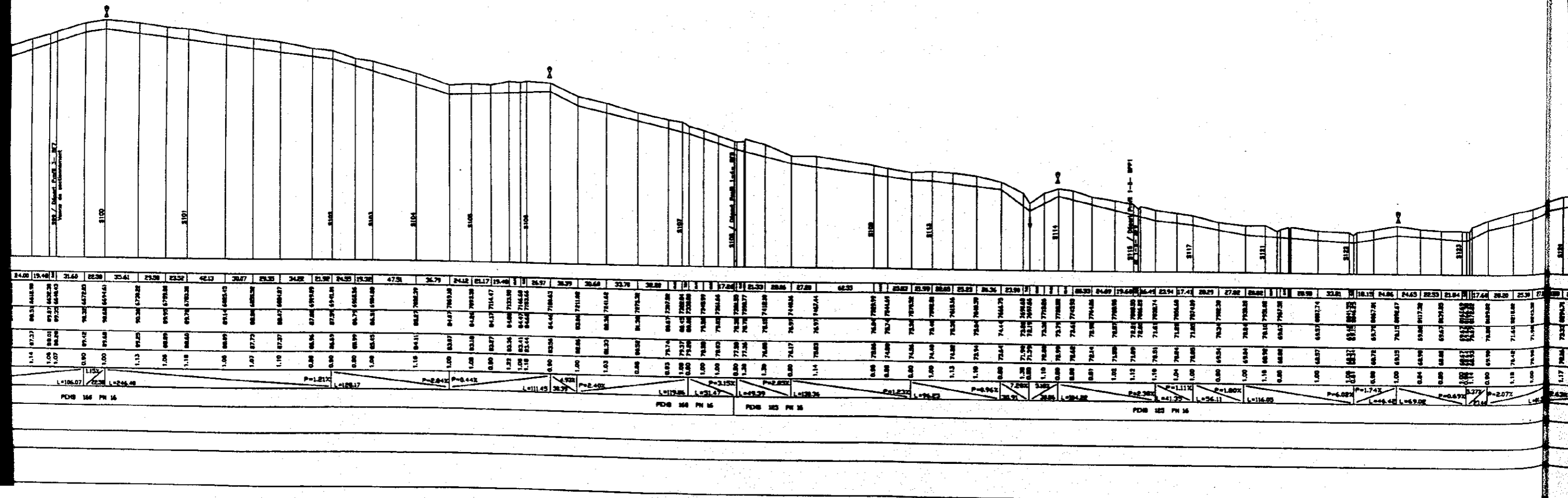
Bv Pk : 6042.37
 Av Pk : 8713.64
 Ech. Alim. : 1/2000
 Ech. Carte : 1/200

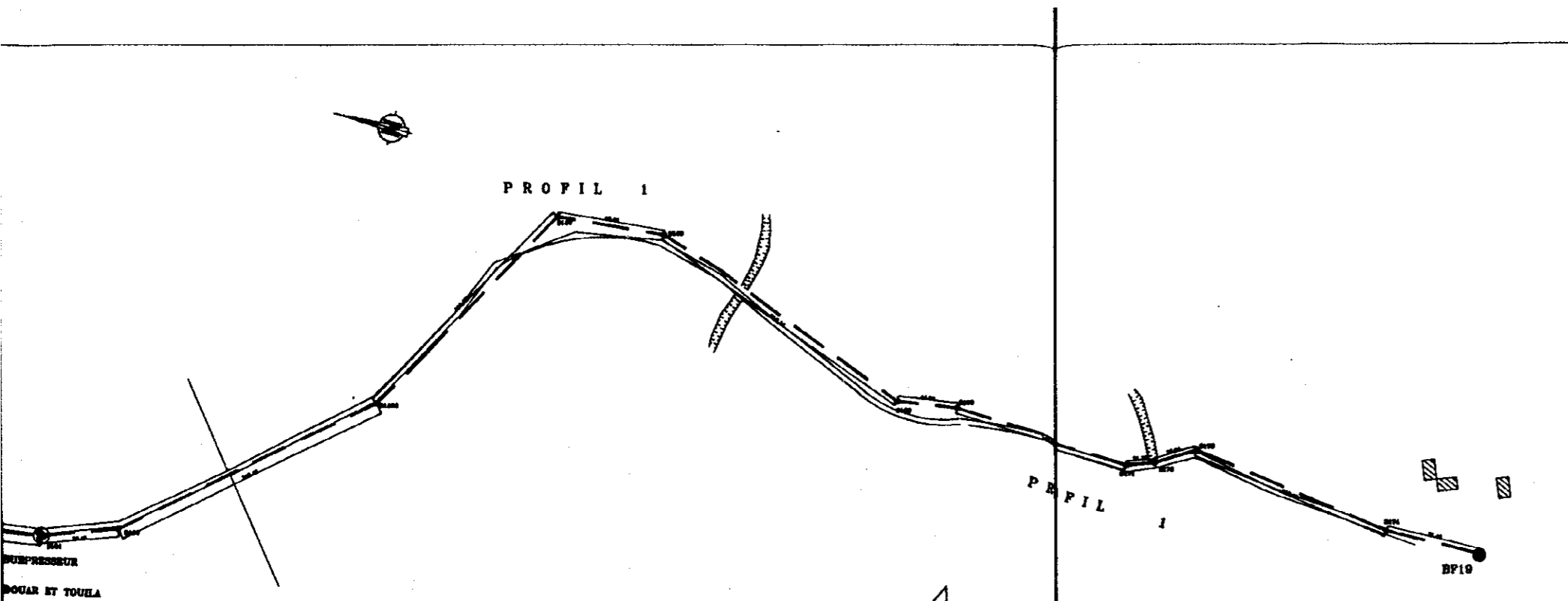
PLANS DE COMPARAISON

NUMERO DES PROFILS	26.97	27.71	28.00	27.93	29.46	29.85	30.66	31.00	30.78	29.00	23.64	27.00	26.67	26.00	23.27	41.47	29.20	25.70	28.94	24.00	19.00	31.60	22.20	20.61	29.00	23.52	42.13	30.27	29.20	24.20	21.90	24.90	19.20	47.51	26.79	24.12	21.17	15.40	26.97	26.70	30.60	23.70	32.20	17.24																																																																																																																																																																																																																																																																																																																																																																																																																																																																																																																																																																																																																																																																																																																																																																																																																											
DISTANCES PARTIELLES	66.97	27.71	28.00	27.93	29.46	29.85	30.66	31.00	30.78	29.00	23.64	27.00	26.67	26.00	23.27	41.47	29.20	25.70	28.94	24.00	19.00	31.60	22.20	20.61	29.00	23.52	42.13	30.27	29.20	24.20	21.90	24.90	19.20	47.51	26.79	24.12	21.17	15.40	26.97	26.70	30.60	23.70	32.20	17.24																																																																																																																																																																																																																																																																																																																																																																																																																																																																																																																																																																																																																																																																																																																																																																																																																											
DISTANCES CUMULEES	66.97	94.68	122.68	150.61	179.07	208.92	239.58	270.58	301.36	332.34	363.52	394.99	426.66	458.53	490.80	523.27	555.94	588.84	621.98	655.38	689.04	722.94	757.14	791.75	826.75	862.04	897.62	933.49	969.66	1006.13	1042.93	1080.13	1117.74	1155.75	1194.16	1232.97	1272.17	1311.77	1351.77	1392.17	1432.97	1474.17	1515.77	1557.77	1600.17	1642.97	1686.17	1729.77	1773.77	1818.17	1862.97	1908.17	1953.77	2000.17	2047.17	2094.77	2142.97	2191.77	2241.17	2291.17	2341.77	2392.97	2444.77	2497.17	2550.17	2603.77	2658.17	2713.17	2768.77	2825.17	2882.17	2939.77	2998.17	3057.17	3116.77	3177.17	3238.17	3299.17	3360.17	3422.17	3484.17	3547.17	3611.17	3675.17	3740.17	3806.17	3873.17	3940.17	4008.17	4077.17	4147.17	4218.17	4290.17	4363.17	4437.17	4512.17	4588.17	4665.17	4743.17	4822.17	4902.17	4983.17	5065.17	5148.17	5232.17	5317.17	5403.17	5490.17	5578.17	5667.17	5757.17	5848.17	5940.17	6033.17	6127.17	6222.17	6318.17	6415.17	6513.17	6612.17	6712.17	6813.17	6915.17	7018.17	7122.17	7227.17	7333.17	7440.17	7548.17	7657.17	7767.17	7878.17	7990.17	8103.17	8217.17	8332.17	8448.17	8565.17	8683.17	8802.17	8922.17	9043.17	9165.17	9288.17	9412.17	9537.17	9663.17	9790.17	9918.17	10047.17	10177.17	10308.17	10440.17	10573.17	10707.17	10842.17	10978.17	11115.17	11253.17	11392.17	11532.17	11673.17	11815.17	11958.17	12102.17	12247.17	12393.17	12540.17	12688.17	12837.17	12987.17	13138.17	13290.17	13443.17	13597.17	13752.17	13908.17	14065.17	14223.17	14382.17	14542.17	14703.17	14865.17	15028.17	15192.17	15357.17	15523.17	15690.17	15858.17	16027.17	16197.17	16368.17	16540.17	16713.17	16887.17	17062.17	17238.17	17415.17	17593.17	17772.17	17952.17	18133.17	18315.17	18498.17	18682.17	18867.17	19053.17	19240.17	19428.17	19617.17	19807.17	19998.17	20190.17	20383.17	20577.17	20772.17	20968.17	21165.17	21363.17	21562.17	21762.17	21963.17	22165.17	22368.17	22572.17	22777.17	22983.17	23190.17	23398.17	23607.17	23817.17	24028.17	24240.17	24453.17	24667.17	24882.17	25098.17	25315.17	25533.17	25752.17	25972.17	26193.17	26415.17	26638.17	26862.17	27087.17	27313.17	27540.17	27768.17	27997.17	28227.17	28458.17	28690.17	28923.17	29157.17	29392.17	29628.17	29865.17	30103.17	30342.17	30582.17	30823.17	31065.17	31308.17	31552.17	31797.17	32043.17	32290.17	32538.17	32787.17	33037.17	33288.17	33540.17	33793.17	34047.17	34302.17	34558.17	34815.17	35073.17	35332.17	35592.17	35853.17	36115.17	36378.17	36642.17	36907.17	37173.17	37440.17	37708.17	37977.17	38247.17	38518.17	38790.17	39063.17	39337.17	39612.17	39888.17	40165.17	40443.17	40722.17	41002.17	41283.17	41565.17	41848.17	42132.17	42417.17	42703.17	42990.17	43278.17	43567.17	43857.17	44148.17	44440.17	44733.17	45027.17	45322.17	45618.17	45915.17	46213.17	46512.17	46812.17	47113.17	47415.17	47718.17	48022.17	48327.17	48633.17	48940.17	49248.17	49557.17	49867.17	50178.17	50490.17	50803.17	51117.17	51432.17	51748.17	52065.17	52383.17	52702.17	53022.17	53343.17	53665.17	53988.17	54312.17	54637.17	54963.17	55290.17	55618.17	55947.17	56277.17	56608.17	56940.17	57273.17	57607.17	57942.17	58278.17	58615.17	58953.17	59292.17	59632.17	59973.17	60315.17	60658.17	61002.17	61347.17	61693.17	62040.17	62388.17	62737.17	63087.17	63438.17	63790.17	64143.17	64497.17	64852.17	65208.17	65565.17	65923.17	66282.17	66642.17	67003.17	67365.17	67728.17	68092.17	68457.17	68823.17	69190.17	69558.17	69927.17	70297.17	70668.17	71040.17	71413.17	71787.17	72162.17	72538.17	72915.17	73293.17	73672.17	74052.17	74433.17	74815.17	75198.17	75582.17	75967.17	76353.17	76740.17	77128.17	77517.17	77907.17	78298.17	78690.17	79083.17	79477.17	79872.17	80268.17	80665.17	81063.17	81462.17	81862.17	82263.17	82665.17	83068.17	83472.17	83877.17	84283.17	84690.17	85098.17	85507.17	85917.17	86328.17	86740.17	87153.17	87567.17	87982.17	88398.17	88815.17	89233.17	89652.17	90072.17	90493.17	90915.17	91338.17	91762.17	92187.17	92613.17	93040.17	93468.17	93897.17	94327.17	94758.17	95190.17	95623.17	96057.17	96492.17	96928.17	97365.17	97803.17	98242.17	98682.17	99123.17	99565.17	100008.17	100452.17	100897.17	101343.17	101790.17	102238.17	102687.17	103137.17	103588.17	104040.17	104493.17	104947.17	105402.17	105858.17	106315.17	106773.17	107232.17	107692.17	108153.17	108615.17	109078.17	109542.17	110007.17	110472.17	110938.17	111405.17	111873.17	112342.17	112812.17	113283.17	113755.17	114228.17	114702.17	115177.17	115653.17	116130.17	116608.17	117087.17	117567.17	118048.17	118530.17	119013.17	119497.17	120082.17	120568.17	121055.17	121543.17	122032.17	122522.17	123013.17	123505.17	123998.17	124492.17	124987.17	125483.17	125980.17	126478.17	126977.17	127477.17	127978.17	128480.17	128983.17	129487.17	129992.17	130498.17	131005.17	131513.17	132022.17	132532.17	133043.17	133555.17	134068.17	134582.17	135097.17	135613.17	136130.17	136648.17	137167.17	137687.17	138208.17	138730.17	139253.17	139777.17	140302.17	140828.17	141355.17	141883.17	142412.17	142942.17	143473.17	144005.17	144538.17	145072.17	145607.17	146143.17	146680.17	147218.17	147757.17	148297.17	148838.17	149380.17	149923.17	150467.17	151012.17	151558.17	152105.17	152653.17	153202.17	153752.17	154303.17	154855.17	155408.17	155962.17	156517.17	157073.17	157630.17	158188.17	158747.17	159307.17	159868.17	160430.17	160993.17	161557.17	162122.17	162688.17	163255.17	163823.17	164392.17	164962.17	165533.17	166105.17	166678.17	167252.17	167827.17	168403.17	168980.17	169558.17	170137.17	170717.17	171298.17	171880.17	172463.17	173047.17	173632.17	174218.17	174805.17	175393.17	175982.17	176572.17	177163.17	177755.17	178348.17	178942.17	179537.17	180133.17	180730.17	181328.17	181927.17	182527.17	183128.17	183730.17	184333.17	184937.17	185542.17	186148.17	186755.17	187363.17	187972.17	188582.17	189193.17	189805.17	190418.17	191032.17	191647.17	192263.17	192880.17	193498.17	194117.17	194737.17	195358.17	195980.17	196603.17	197227.17	197852.17	198478.17	199105.17	199733.17	200362.17	200992.17	201623.17	202255.17	202888.17	203522.17	204157.17	204793.17	205430.17	206068.17	206707.17	207347.17	207988.17	208630.17	209273.17	209917.17	210562.17	211208.17	211855.17	212503.17	213152.17	213802.17	214453.17	215105.17	215758.17	216412.17	217067.17	217723.17	218380.17	219038.17	219697.17	220357.17	221018.17	221680.17	222343.17	223007.17	223672.17	224338.17	225005.17	225673.17	226342.17	227012.17	227683.17	228355.17	229028.17	229702.17	230377.17	231053.17	231730.17	232408.17	233087.17	233767.17	234448.17	235130.17	235813.17	236497.17	237182.17	237868.17	238555.17	239243.17	239932.17	240622.17	241313.17	242005.17	242698.17	243392.17	244087.17	244783.17	245480.17	246178.17	246877.17	247577.17	248278.17	248980.17	249683.17	250387.17	251092.17	251798.17	252505.17	253213.17	253922.17	254632.17	255343.17	256055.17	256768.17	257482.17	258197.17	258913.17	259630.17	260348.17	261067.17	261787.17	262508.17	263230.17	263953.17	264677.17	265402.17	266128.17	266855.17	267583.17	268312.17	269042.17	269773.17	270505.17	271238.17	271972.17	272707.17	273443.17	274180.17	274918.17	275657.17	276397.17	277138.17	277880.17	278623.17	279367.17	280112.17	280858.17	281605.17	282353.17	283102.17	283852.17	284603.17	285355.17	286108.17	286862.17	287617.17	288373.17	289130.17	289888.17	290647.17	291407.17	292168.17	292930.17	293693.17	294457.17	295222.17	295988.17	296755.17	297523.17	298292.17	299062.17	299833.17	300605.17	301378.17	302152.17	302927.17	303703.17	304480.17	305258.17	306037.17	306817.17	307598.17	308380.17	309163.17	309947.17	310732.17	311518.17	312305.17	313093.17	313882.17	314672.17	315463.17	316255.17	317048.17	317842.17	318637.17	319433.17	320230.17	321028.17	321827.17	322627.17	323428.17	324230.17	325033.17	325837.17	326642.17	327448.17	328255.17	329063.17	329872.17	330682.17	331493.17	332305.17	333118.17	333932.17	334747.17	335563.17	336380.17</



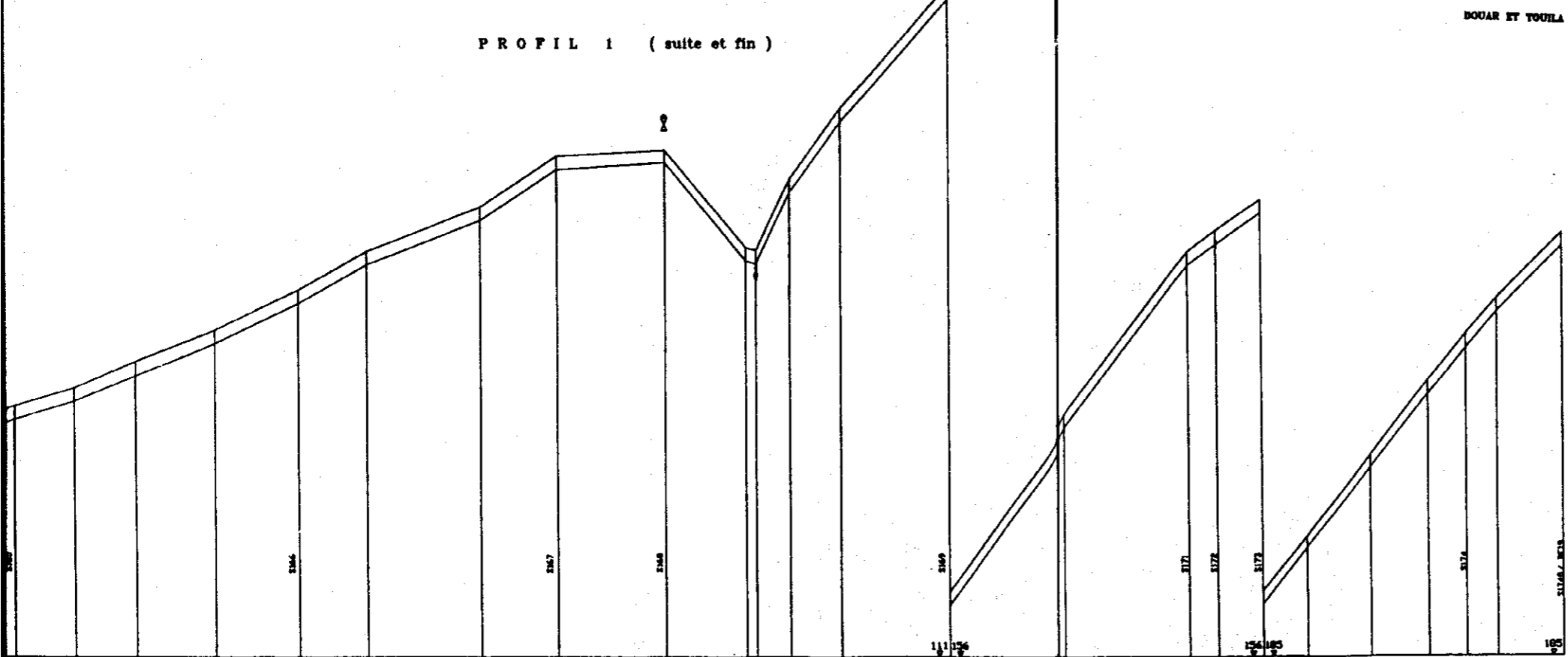
PROFIL 1 (suite)



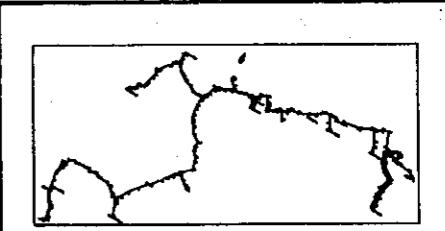


LEGENDE DU RESEAU PROJETE

○	Point d'eau existant
○	Site de captage projeté
○	Station de pompage projeté
○	Tranche de conduite
○	Conduite de réajustement projeté
○	Conduite de distribution projeté
○	Tranche de canalisation
○	Station de pompage
○	Tranche de canalisation et de réajustement
○	Tranche de canalisation existante
○	Point de mesure
○	Tranche de canalisation particulière projeté
○	Tranche de canalisation particulière existante
○	Station de pompage
○	Tranche de réajustement
○	P de base
○	Station
○	Tranche



43.75	44.84	39.89	43.59	39.82	46.21	37.99	48.59	42.83	37.28	37.69	48.18	48.49	43.44	41.39	38.94	38.91	47.31	43.88	38.88	23.14	48.25
1.00	1.00	1.00	1.00	1.00	1.00	1.00	1.00	1.00	1.00	1.00	1.00	1.00	1.00	1.00	1.00	1.00	1.00	1.00	1.00	1.00	1.00
P=2.84%	P=4.23%	L=102.57	P=4.68%	P=5.73%	P=3.84%	L=98.81	P=6.03%	P=6.64%	L=98.79	L=62.83	P=11.80%	P=11.80%	P=11.80%	P=7.19%	P=2.52%	L=121.46	P=11.71%	P=14.87%	L=14.87%	P=14.87%	P=14.87%
PDB 63 PH 14																					

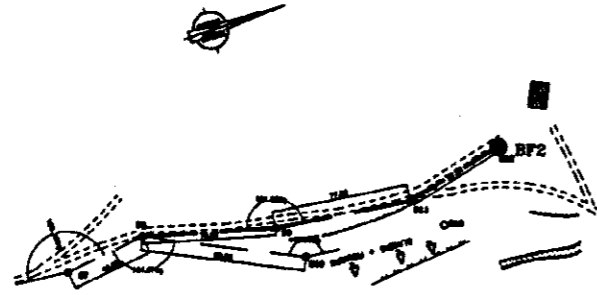


REPUBLIQUE TUNISIENNE
 MINISTERE DE L'AGRICULTURE
 CRDA : DE BIZERTE

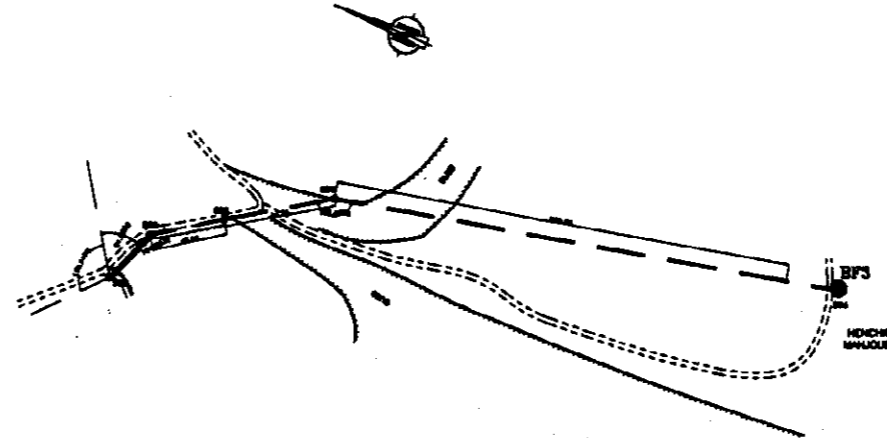
PLAN N° : PLAN
 REGION : Ben Amer
 CONTRÔLE : BIZERTE
 DATE : Avril 2000

PROJET : TENGUECHES
 ETUDE DE BASE
 ALIMENTATION EN EAU POTABLE
 DES ZONES RURALES
 TRACÉ EN PLAN / PROFIL 1 (suite et fin) 6/9

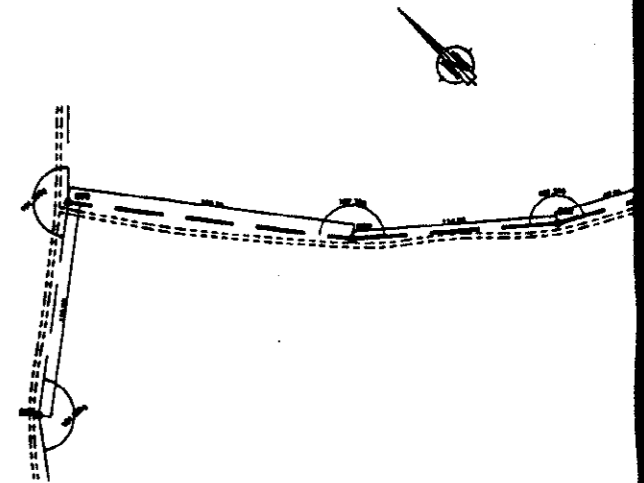
PROFIL 1-1



PROFIL 1-2

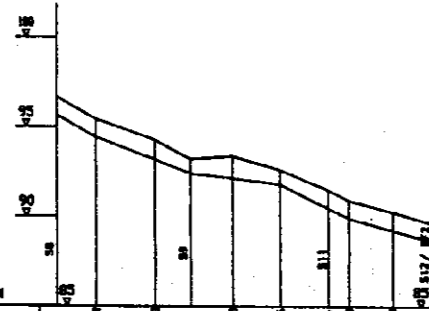


PROFIL 1-



PROFIL 1-1

Planche No : 1
 Du Pk : 0.00
 Au Pk : 211.50
 Ech. Absc : 1:2000
 Ech. Cotes : 1:200

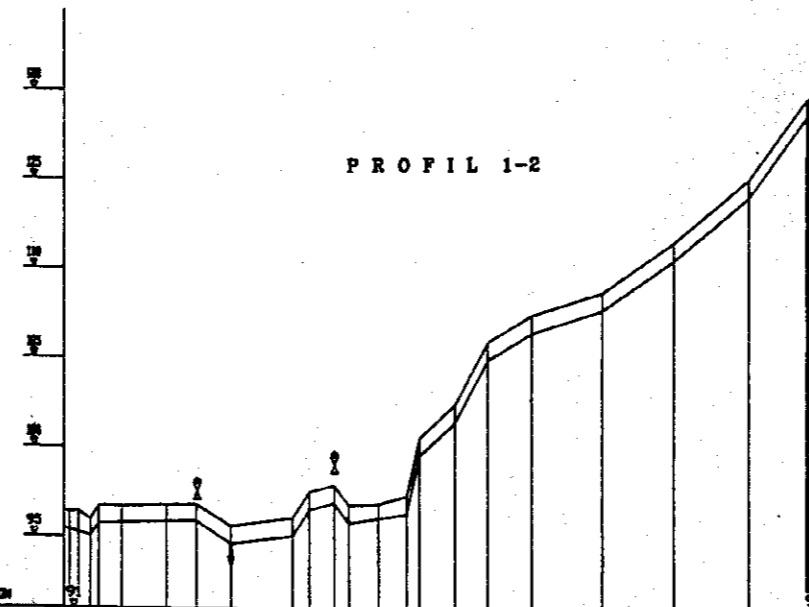


PLANS DE COMPARAISON

NOM DES PROFILS										
DISTANCES PARTIELLES	00.00	22.30	23.26	23.90	24.61	27.87	31.96	37.44		
DISTANCES CUMULEES	0.00	22.30	45.56	69.46	94.07	121.94	153.90	191.34	228.78	266.22
COTES TERRAIN NATUEL	42.5	43.5	43.8	44.0	44.2	44.5	44.8	45.0	45.2	45.5
COTES PROJET	43.5	44.5	44.8	45.0	45.2	45.5	45.8	46.0	46.2	46.5
PENTE	1.00	1.00	1.11	0.80	0.46	0.80	0.64	0.50	0.46	0.67
DECLIVITE TERRAIN	P=3.76%		P=1.15%		P=4.94%		P=2.67%			
BAIENNE	PCH 63 PH 16					PCH 63 PH 16				
ALIGNEMENT & COURBES										

PROFIL 1-2

Du Pk : 0.00
 Au Pk : 428.40
 Ech. Absc : 1:2000
 Ech. Cotes : 1:200

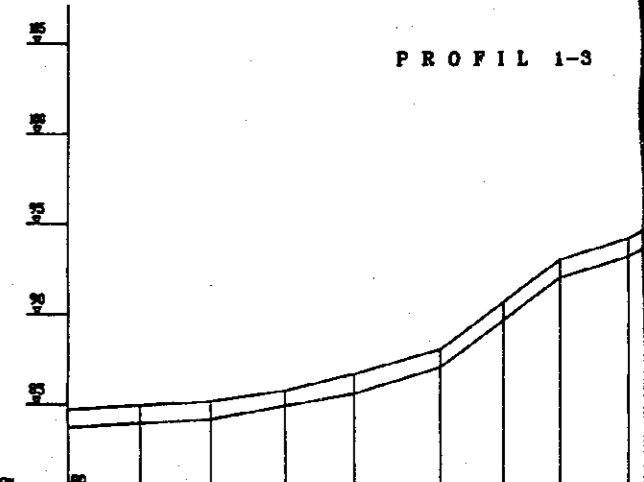


PLANS DE COMPARAISON

NOM DES PROFILS																				
DISTANCES PARTIELLES	00.00	24.00	17.00	19.00	24.00	21.00	13.00	11.00	11.00	11.00	11.00	11.00	11.00	11.00	11.00	11.00	11.00	11.00	11.00	11.00
DISTANCES CUMULEES	0.00	24.00	41.00	60.00	84.00	105.00	118.00	129.00	140.00	151.00	162.00	173.00	184.00	195.00	206.00	217.00	228.00	239.00	250.00	261.00
COTES TERRAIN NATUEL	40.5	41.0	41.5	42.0	42.5	43.0	43.5	44.0	44.5	45.0	45.5	46.0	46.5	47.0	47.5	48.0	48.5	49.0	49.5	50.0
COTES PROJET	41.5	42.5	43.5	44.5	45.5	46.5	47.5	48.5	49.5	50.5	51.5	52.5	53.5	54.5	55.5	56.5	57.5	58.5	59.5	60.5
PENTE	1.00	1.00	1.00	1.00	1.00	1.00	1.00	1.00	1.00	1.00	1.00	1.00	1.00	1.00	1.00	1.00	1.00	1.00	1.00	1.00
DECLIVITE TERRAIN	P=4.17%		P=2.33%		P=5.88%		P=9.09%		P=7.14%		P=8.42%		P=13.00%		P=13.00%		P=13.00%		P=13.00%	
BAIENNE	PCH 63 PH 16										PCH 63 PH 16									
ALIGNEMENT & COURBES																				

PROFIL 1-3

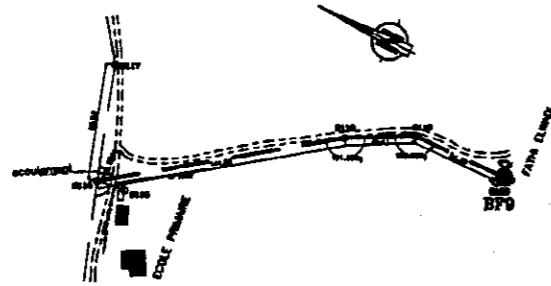
Du Pk : 0.00
 Au Pk : 419.55
 Ech. Absc : 1:2000
 Ech. Cotes : 1:200



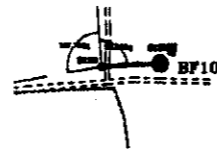
PLANS DE COMPARAISON

NOM DES PROFILS										
DISTANCES PARTIELLES	00.00	46.63	39.19	48.24	38.89	48.86	35.10	31.67	36.35	
DISTANCES CUMULEES	0.00	46.63	85.82	134.06	172.95	221.81	256.91	288.58	324.93	361.28
COTES TERRAIN NATUEL	40.5	41.0	41.5	42.0	42.5	43.0	43.5	44.0	44.5	45.0
COTES PROJET	41.5	42.5	43.5	44.5	45.5	46.5	47.5	48.5	49.5	50.5
PENTE	1.10	1.00	1.00	0.84	0.56	1.10	0.57	0.50	0.50	0.50
DECLIVITE TERRAIN	P=0.80%		P=1.87%		P=3.16%		P=7.32%		P=3.15%	
BAIENNE	PCH 63 PH 16					PCH 63 PH 16				
ALIGNEMENT & COURBES										

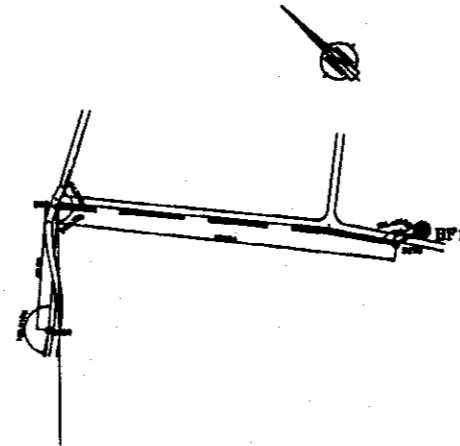
PROFIL 1-7



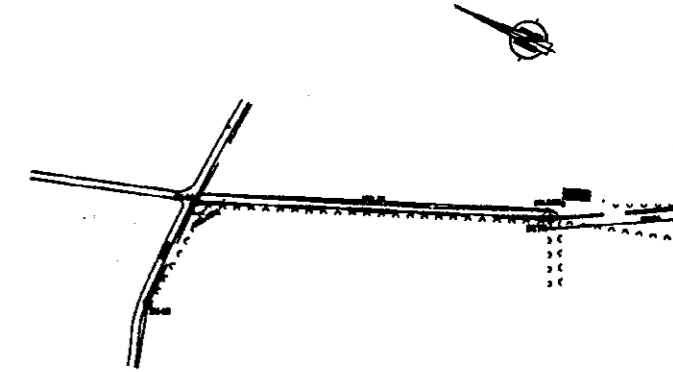
PROFIL 1-7



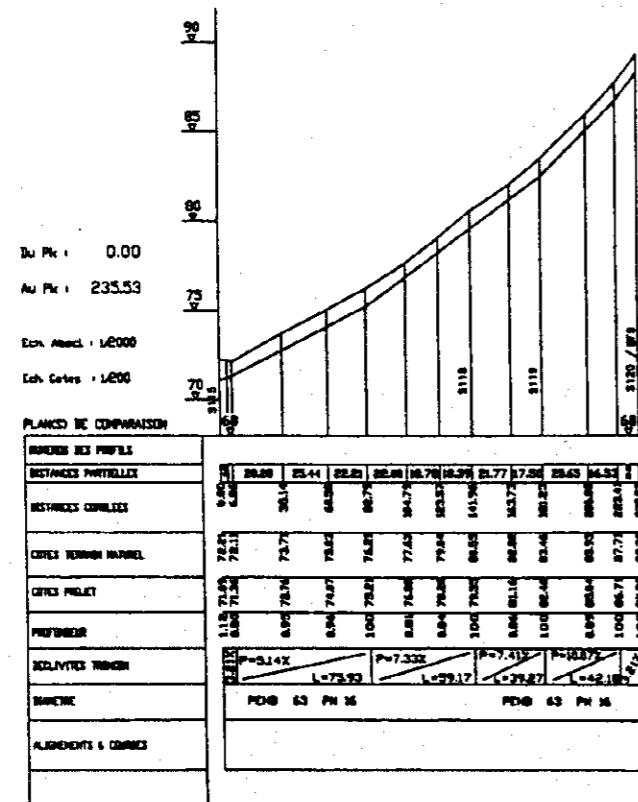
PROFIL 1-8



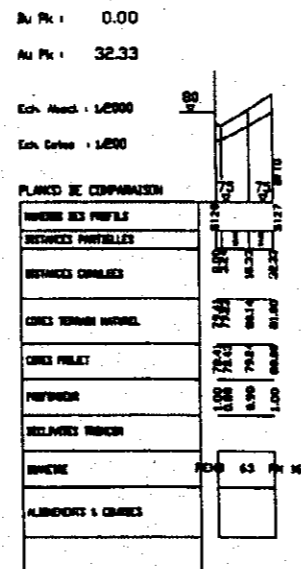
PROFIL 1-9



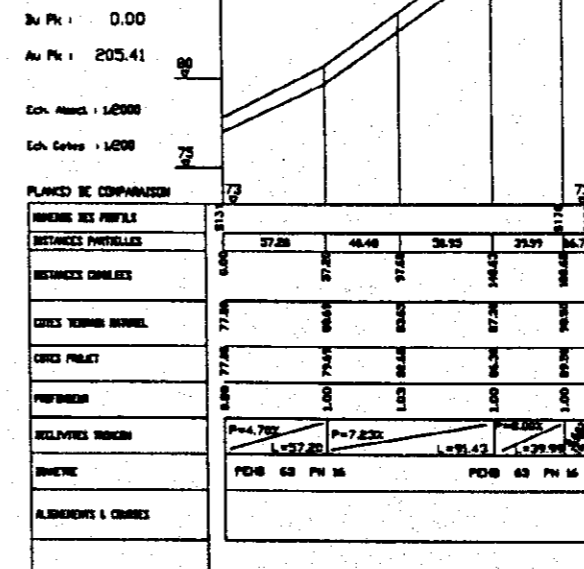
PROFIL 1-6



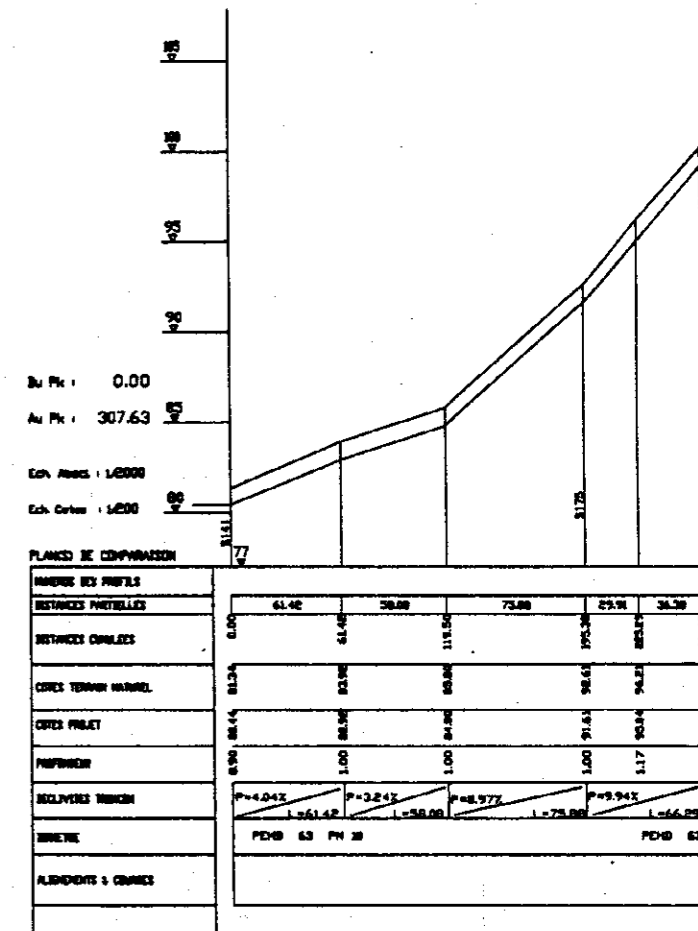
PROFIL 1-7



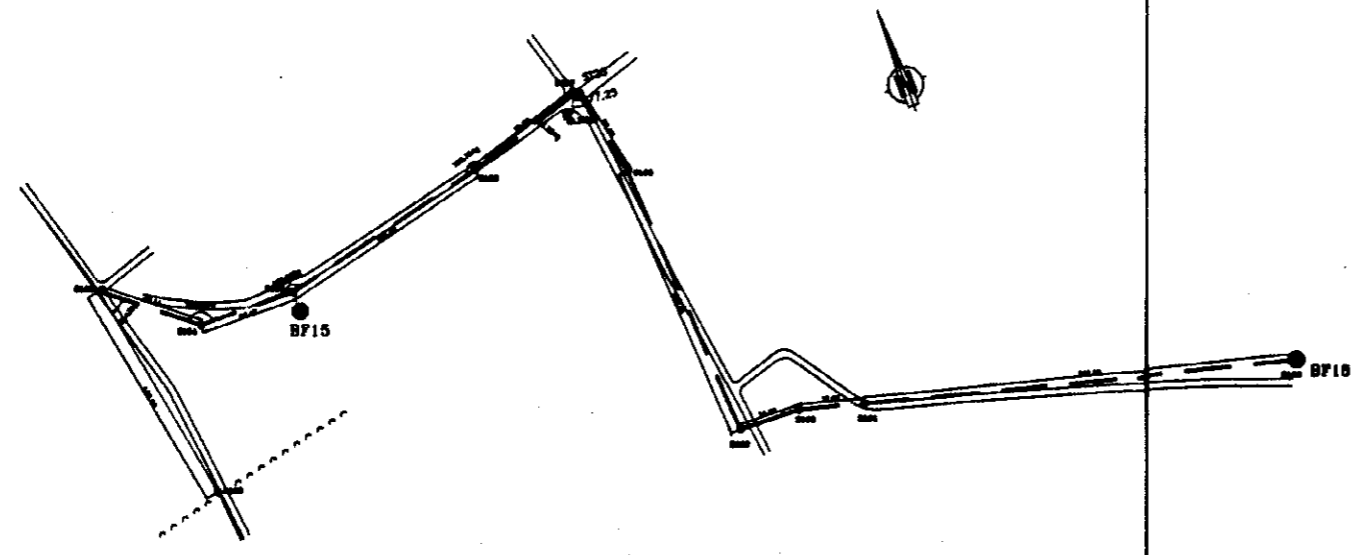
PROFIL 1-8



PROFIL 1-9



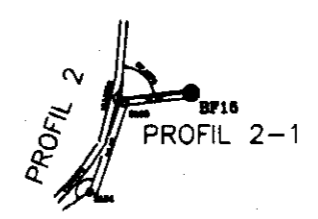
PROFIL 2



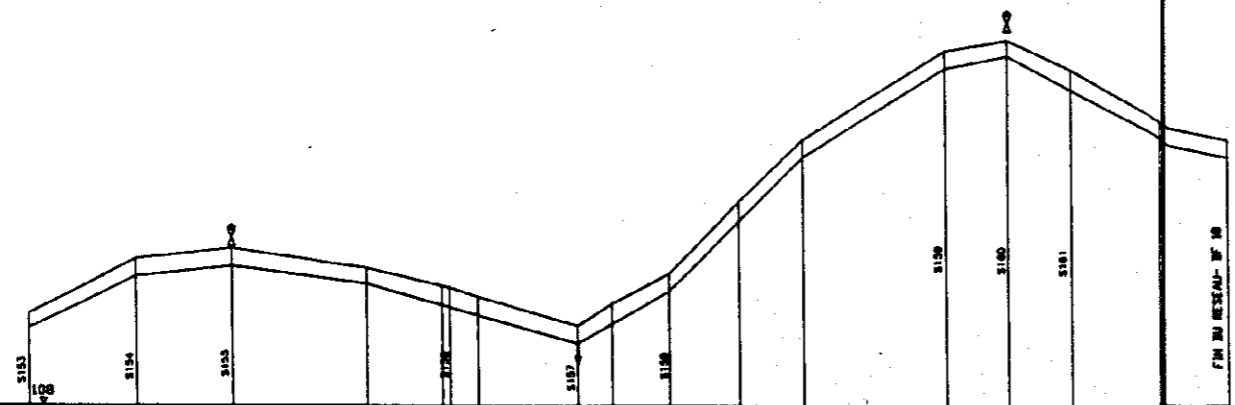
LEGENDE DE SYMBOLES

—	Profil d'axe
---	Profil de terrain
---	Profil de construction
---	Profil de nivellement
---	Profil de nivellement provisoire
---	Profil de nivellement définitif
---	Profil de nivellement provisoire
---	Profil de nivellement définitif
---	Profil de nivellement provisoire
---	Profil de nivellement définitif
---	Profil de nivellement provisoire
---	Profil de nivellement définitif
---	Profil de nivellement provisoire
---	Profil de nivellement définitif
---	Profil de nivellement provisoire
---	Profil de nivellement définitif
---	Profil de nivellement provisoire
---	Profil de nivellement définitif
---	Profil de nivellement provisoire
---	Profil de nivellement définitif
---	Profil de nivellement provisoire
---	Profil de nivellement définitif
---	Profil de nivellement provisoire
---	Profil de nivellement définitif

PROFIL 2-1



PROFIL 2



De Pk : 0.00
 Au Pk : 1035.70
 Ech. Horiz : 1/2000
 Ech. Vert : 1/200

PLANS DE COMPARAISON

NOMER DES PROFILS														
DISTANCES PARTIELLES														
DISTANCES COMPLETES														
COTES TERRAIN NATUREL														
COTES PROJET														
PENTES														
SOLIVITES FINCH														
SINCRITE														
ALIGNEMENTS & COURBES														

PROFIL 2-1

De Pk : 0.00
 Au Pk : 37.24
 Ech. Horiz : 1/2000
 Ech. Vert : 1/200

PLANS DE COMPARAISON

NOMER DES PROFILS	
DISTANCES PARTIELLES	
DISTANCES COMPLETES	
COTES TERRAIN NATUREL	
COTES PROJET	
PENTES	
SOLIVITES FINCH	
SINCRITE	
ALIGNEMENTS & COURBES	



REPUBLIQUE TUNISIENNE
 MINISTERE DE L'AGRICULTURE
 CRDA : DE SIZERTE

PLAN N° : PLAN PROJET : TENDALON

DESIGN : Ben Amer ETUDE DE BASE

COURSE : 2000 ALIMENTATION EN EAU POTABLE

ECHELLE : 1/2000 DES ZONES RURALES

DATE : Aout 2000 TRACES EN PLAN / PROFILS 1 et 2-1

SYMB : 1/2000

