



**Plate 56**  
*Murun West district, Tsagaan tolgoi (No.89)*

Over view of the investigated site.



**Plate 57**  
*Murun West district, Tsagaan tolgoi (No.89)*

Quartz mass (silica cap?).



**Plate 58**  
*Murun West district, Tsagaan tolgoi (No.89)*

Brecciated quartz vein.



**Plate 59**  
*Murun West district, Tsagaan tolgoi (No.89)*

Potassic altered granite (drilling core).



**Plate 60**  
*Murun West district, Ulaannuur (No.90)*

Panoramic view of the investigated area.



**Plate 61**  
*Murun West district, Ulaannuur (No.90)*

Silicified rock distributed in the investigated site.



**Plate 62**  
*Tsagaan uul district, Khaisiin belchir (No.91)*

Over view of the investigated site.



**Plate 63**  
*Tsagaan uul district, Khaisiin belchir (No.91)*

Outcrop of pelitic shist with quartz vein.



**Plate 64**  
*Tsagaan uul district, Tsagaan uul (No.92)*

Panoramic view of the investigated area



**Plate 65**  
*Tsagaan uul district, Tsagaan uul (No.92)*

Old trench in the survey site.



**Plate 66**  
*Tsagaan uul district, Nariin azarga (No.93)*

Over view of the investigated site.



**Plate 67**  
*Tsagaan uul district, Nariin azarga (No.93)*

Outcrop of limestone.

129

235



**Plate 68**  
*Tsagaan uul district, Deed ulaan tolgoi (No.94)*

Over view of the investigated site.



**Plate 69**  
*Tsagaan uul district, Deed ulaan tolgoi (No.94)*

Outcrop of granite with quartz vein.



**Plate 70**  
*Tsagaan uul district, Deed ulaan tolgoi (No.93)*

Panoramic view of the investigated site.



**Plate 71**  
*Tsagaan uul district, Ulaan zavsar (No.95)*

Over view of the investigated site.



**Plate 72**  
*Tsagaan uul district, Gurvan buudal uul (No.96)*

Over view of the investigated site.



**Plate 73**  
*Tsagaan uul district, Gurvan buudal uul (No.96)*

Outcrop of meta-sediment with quartz vein.



**Plate 74**  
*Tsagaan uul district, Khunikh tsakhir (No.97)*

Over view of the investigated site.



**Plate 75**  
*Tsagaan uul district, Khunikh tsakhir (No.97)*

Old trench located in the survey site.



**Plate 76**  
*Tsagaan uul district, Khunikh tsakhir (No.97)*

Outcrop of altered rock (greisen) with quartz fragment.



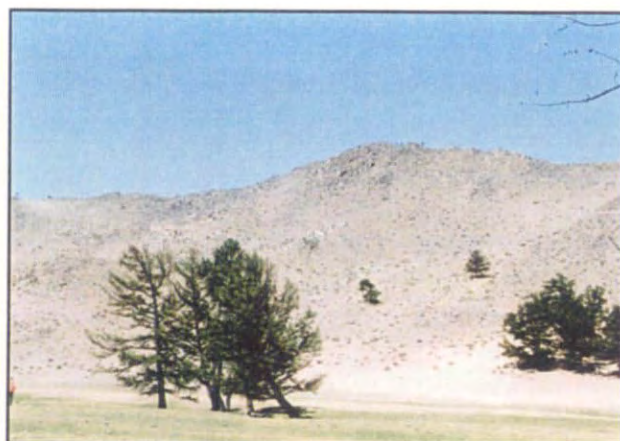
**Plate 77**  
*Tosontsengel district, Zost uul (No.98)*

Old trench located in the survey site.



**Plate 78**  
*Tosontsengel district, Zost uul (No.98)*

Old pit. Limestone is distributed around this pit.



**Plate 79**  
*Tosontsengel district, Khuurai sair (No.99)*

Over view of the investigated site.

130

2  
3  
7



**Plate 80**  
*Tosontsengel district, Khuurai sair (No.99)*

View of the investigated site.



**Plate 81**  
*Tosontsengel district, Khuurai sair (No.99)*

Silicified rock with azurite.



**Plate 82**  
*Tosontsengel district, Naranbulag (No.100)*

Over view of the investigated site.



**Plate 83**  
*Tosontsengel district, Naranbulag (No.100)*

Old trench in the servy site.



**Plate 84**  
*Tosontsengel district, Occurrence124-B-4,5 (No.101)*

View of the investigated site.



**Plate 85**  
*Tosontsengel district, Occurrence124-B-4,5 (No.101)*

Altered gabbro (epidotization).



**Plate 86**  
*Tosontsengel district, Quartzite (No.102)*

Over view of the investigated site.



**Plate 87**  
*Tosontsengel district, Quartzite (No.102)*

Old trench located in the survey site.



**Plate 88**  
*Tosontsengel district, Davaa (No.103)*

Over view of the investigated site.



**Plate 89**  
*Tosontsengel district, Davaa (No.103)*

Outcrop of granite with quartz network vein.

13/E

2005