

Photos



Route 7 Paved road



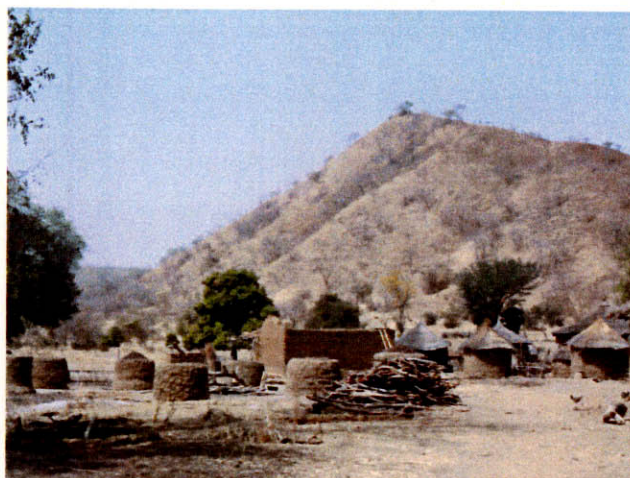
Footpath and road for bicycle
On the top of laterite crust



Lower part of Baoule river
(north of Dioila)



Branch of Bagoé river (south of Dioila)
Stagnant water



Inselberg (hill of perititic schist)
Kouloukoro



Plateau of laterite crust
Diamou

Photo 1 Environnement naturel



MJMB-E2: preparation for drilling



MJMB-E2: drilling

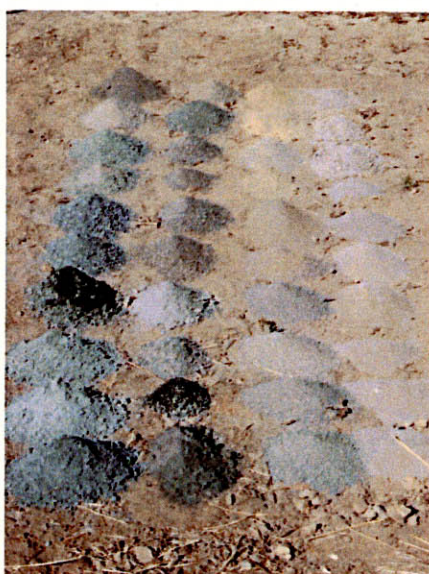


MJMB-E2: drilling



MJMB-E2: drilling

Small amount of underground water is coming from the bottom of hole (36~37m in depth)



Cuttings of MJMB-E2 (0~40m)
Metasediments of Birrimien super group from the top to the bottom



Cuttings of MJMB-E3 (0~31m)
Unconsolidated sediments from the top to 15m deep, granodiorite to the bottom



MJMB-E3: panorama



MJMB-E3:
PVC casing is inserted.



MJMB-E3:
Gravel sand is inserted between
bore hole and casing.



MJMB-E3:
Pumping test by air-rift begins.
Ground water is coming from the pipe.



MJMB-E3:
Measurement for water amount pumped
The amount is about 3 t/h.



MJMB-E3:
Recovery test



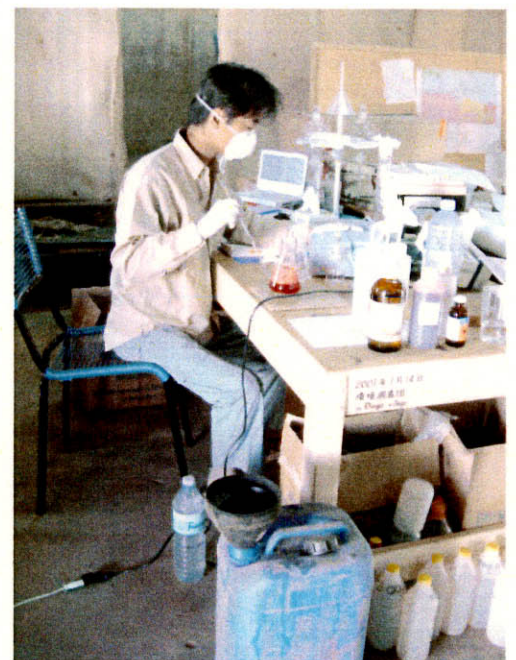
Water sampler is moved down in the hole of MJMB-E3.
Inner diameter of PVC casing is 126mm.



Underground water is collected from the hole of MJMB-E3.
Equipment in the right side can measure pH, temperature, conductivity, DO and turbidity.



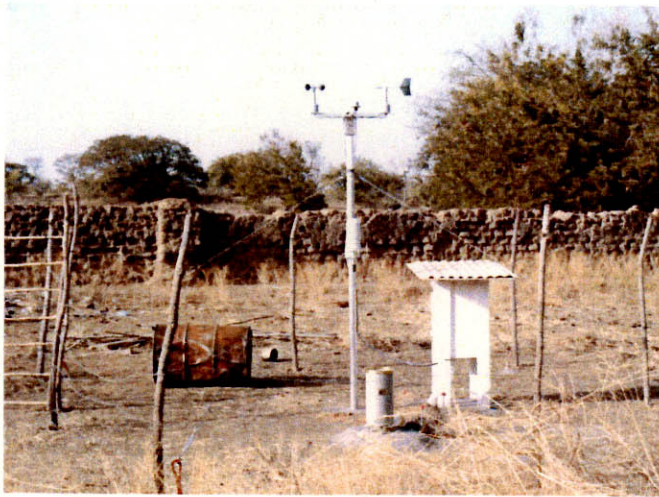
Analysis for water (pre-treatment for Ni)
Waiting for reaction time in the separating funnel.



Analysis for water (pre-treatment for B)
Reaction in the erlenmeyer flask after mixture of water sample, sulfuric acid and reagent.
Chloric gas is produced in the flask.



Analysis for water (pre-treatment for Ni)
Ejecting liquid reacted in the separating funnel to the container for measurement.



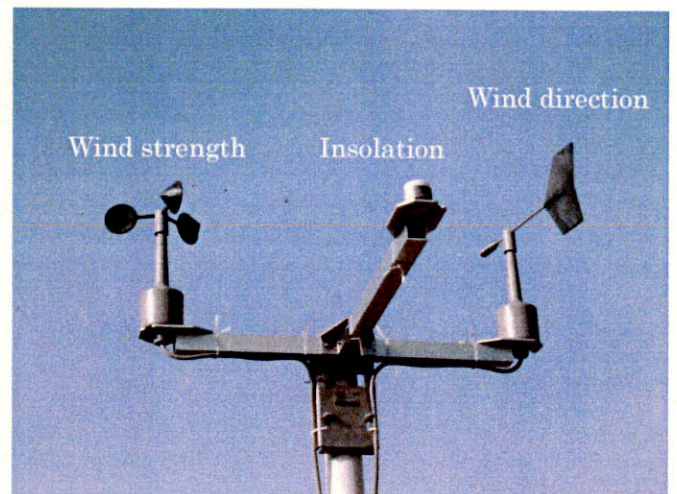
Weather station



Weather station



Data logger and battery



Wind strength, insolation and wind direction (from left)



Precipitation



Temperature and humidity

Photo 5 Observation meteorologique



Soil sampling (SS004)



Stream sediment sampling (FS34)
Upper part of Banifing river (wagi)



Soil sampling (SS005)



Stream sediment sampling (FS04)
Wagi



Soil sampling (SS007)
Top of laterite plateau



Stream sediment sampling (FS08)
Wagi partly stagnant water



Tall trees and grass



Short trees and grass



Branch of Banifing river (wagi)
Density of vegetation is high along the river.



Burn for making cultivation (Ladang)



Upper part of Banifing river
Cultivation in the river bed



Cultivation for millet



Panorama (young tree)



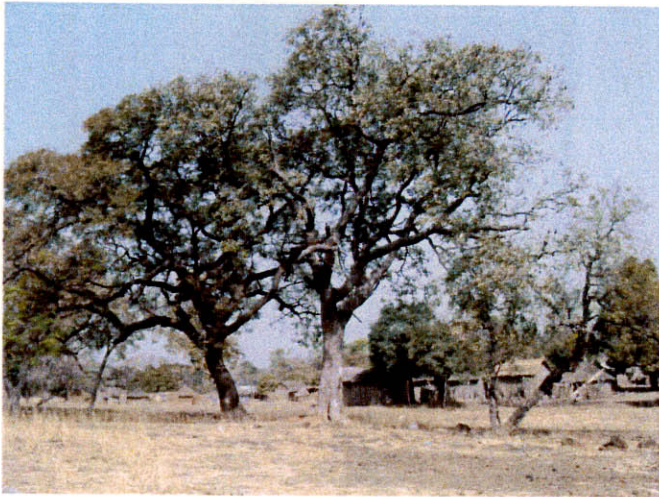
Trunk



Leaves and splinters



Leaves and splinters



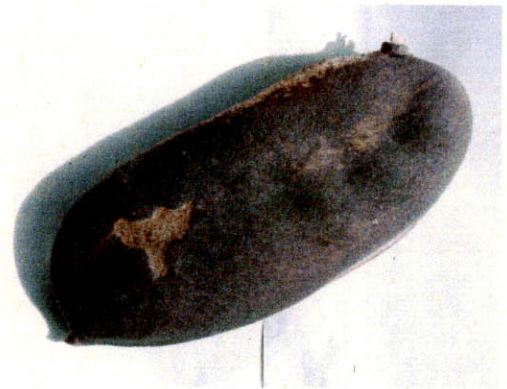
Panorama (center tree)



Trunk



Leaves and fruits



Surface of fruit



Inside of fruit

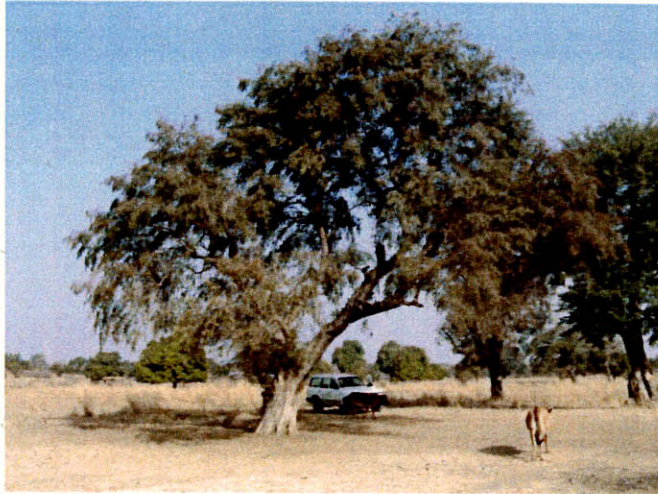


Inside of fruit and seeds



Seeds

Photo 9 Arbres dont l'abattage est interdit 2: *Ficus africana* (Lingue)



Panorama



Trunk



Leaves and flowers



Flowers



Branches and flowers



Panorama (leaves and flowers fell)



Trunk



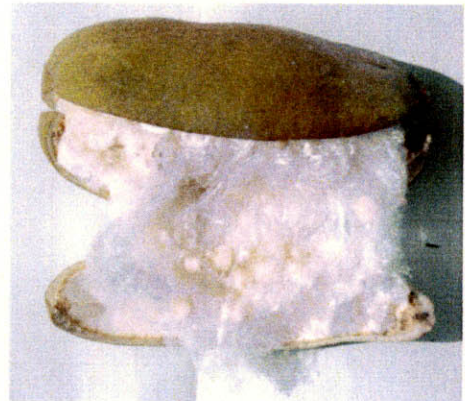
Red flower



Fruit

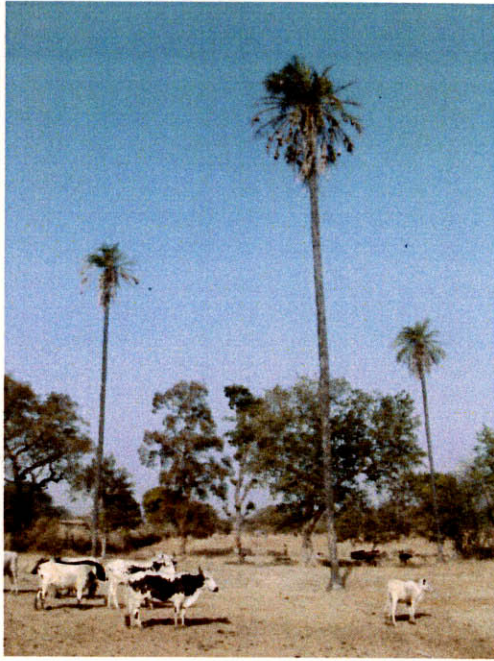


Fruit

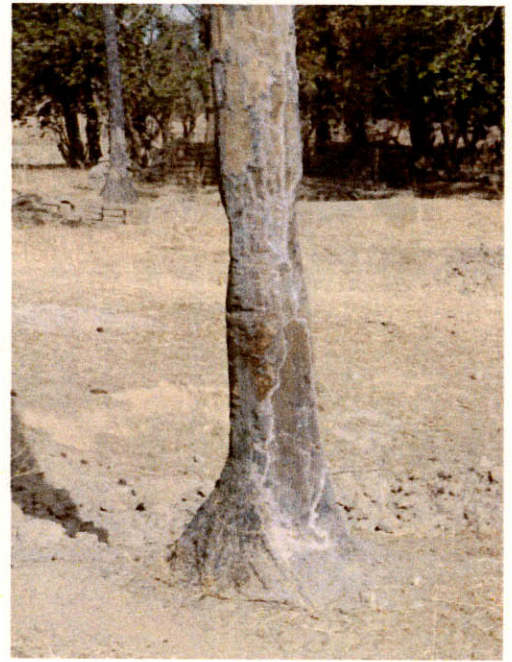


Inside of fruit
Fiber and seeds

Photo 11 Arbres dont l'abattage est interdit 4: Bombax costatum (Bamu)



Panorama (tall trees)



Trunk



Top part of tree



Fruit



Fruit (close-up)



Panorama



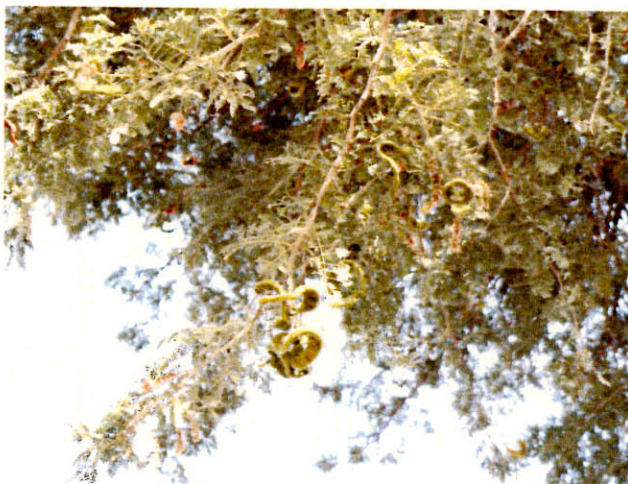
Trunk



Branch and leaves



Nests of bird



Fruit (green and brown)



Fruit



Panorama



Middle part of tree



Trunk



Branch, leaves and fruits



Rounded fruits