

630

640

650

660

670

680

690

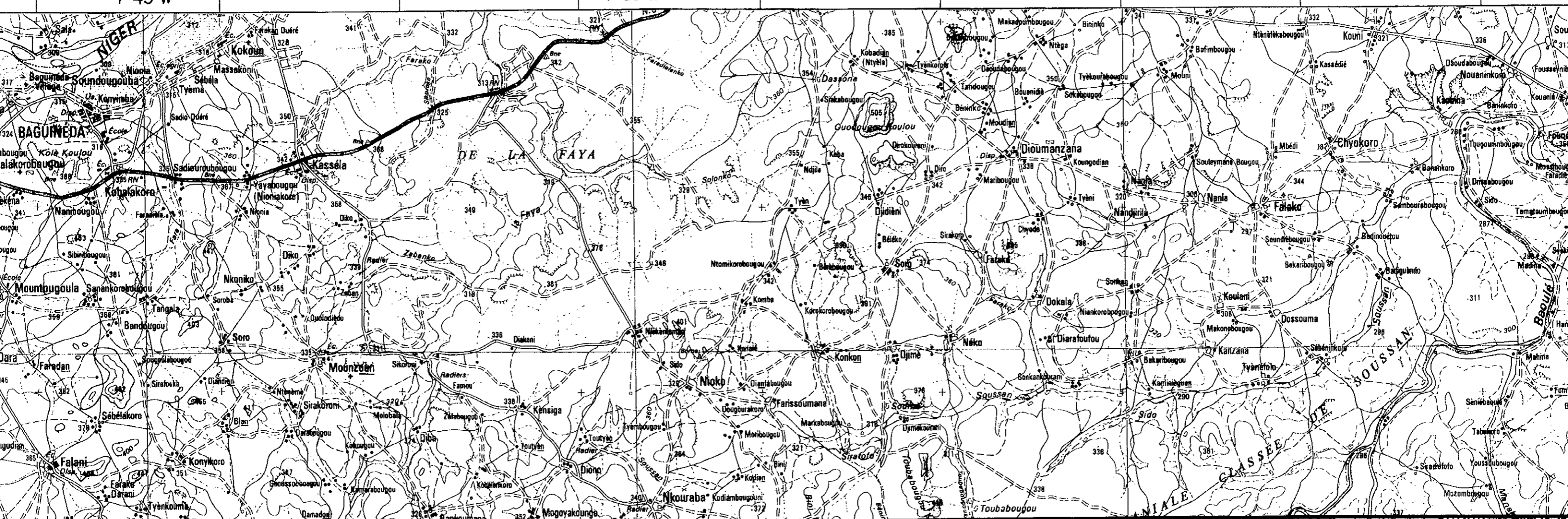
700

710

7°45'W

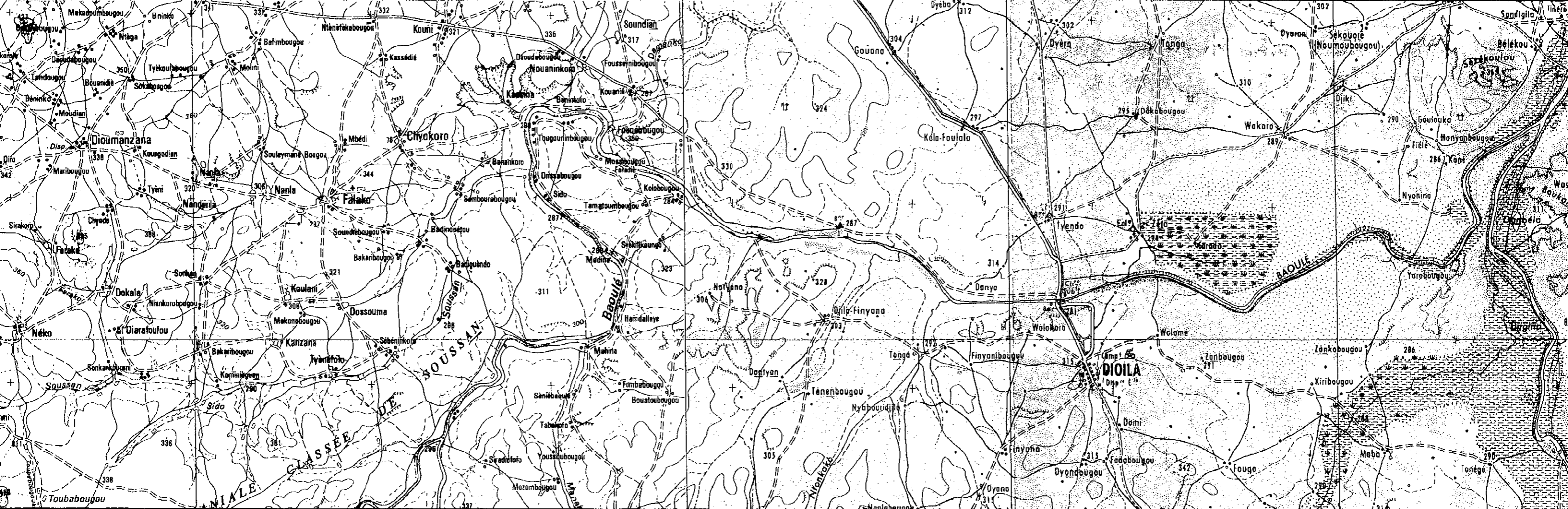
7°30'W

7°15'W



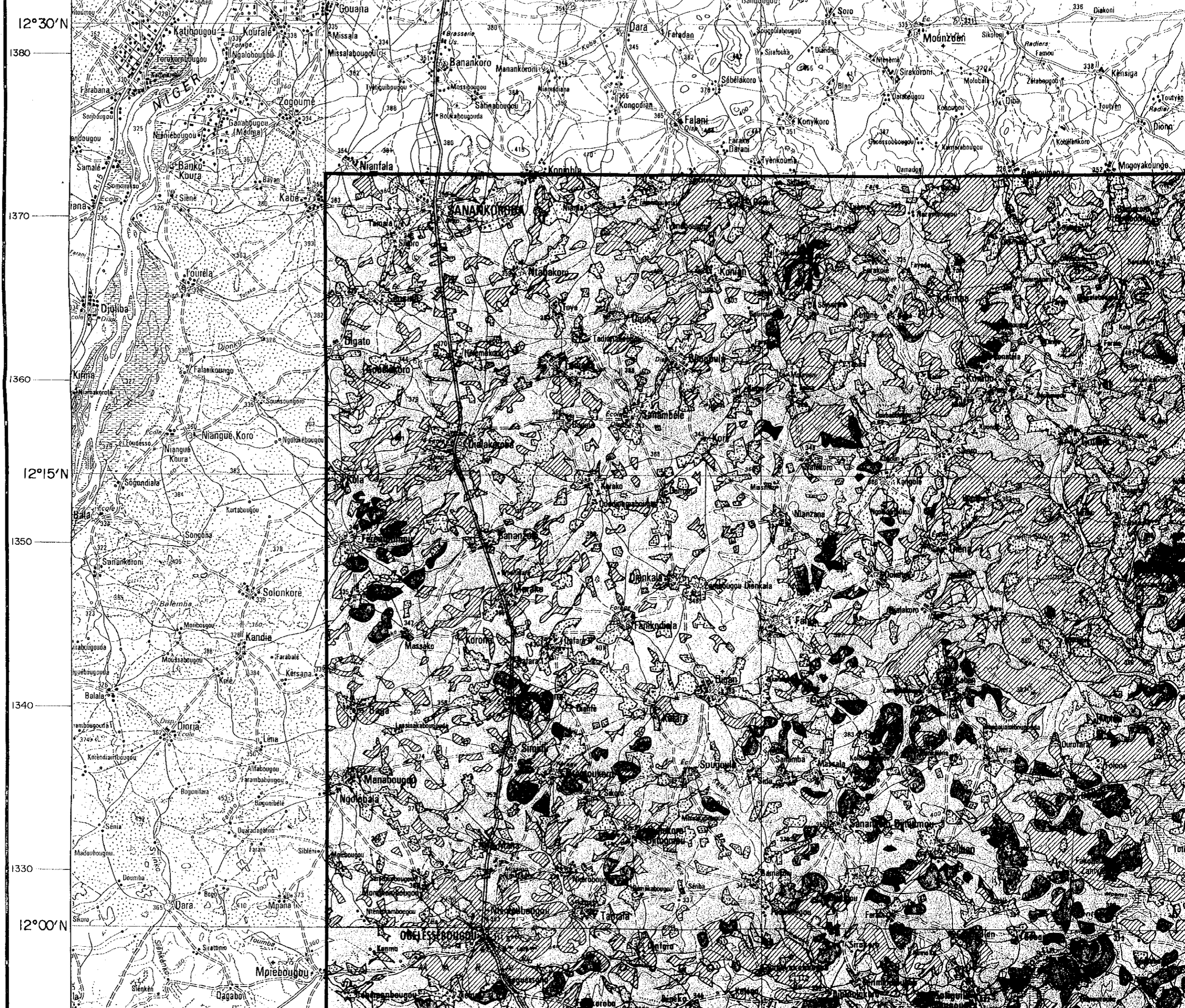


680 690 700 710 720 730 740 750 760  
7°15'W 7°00'W 6°45'W

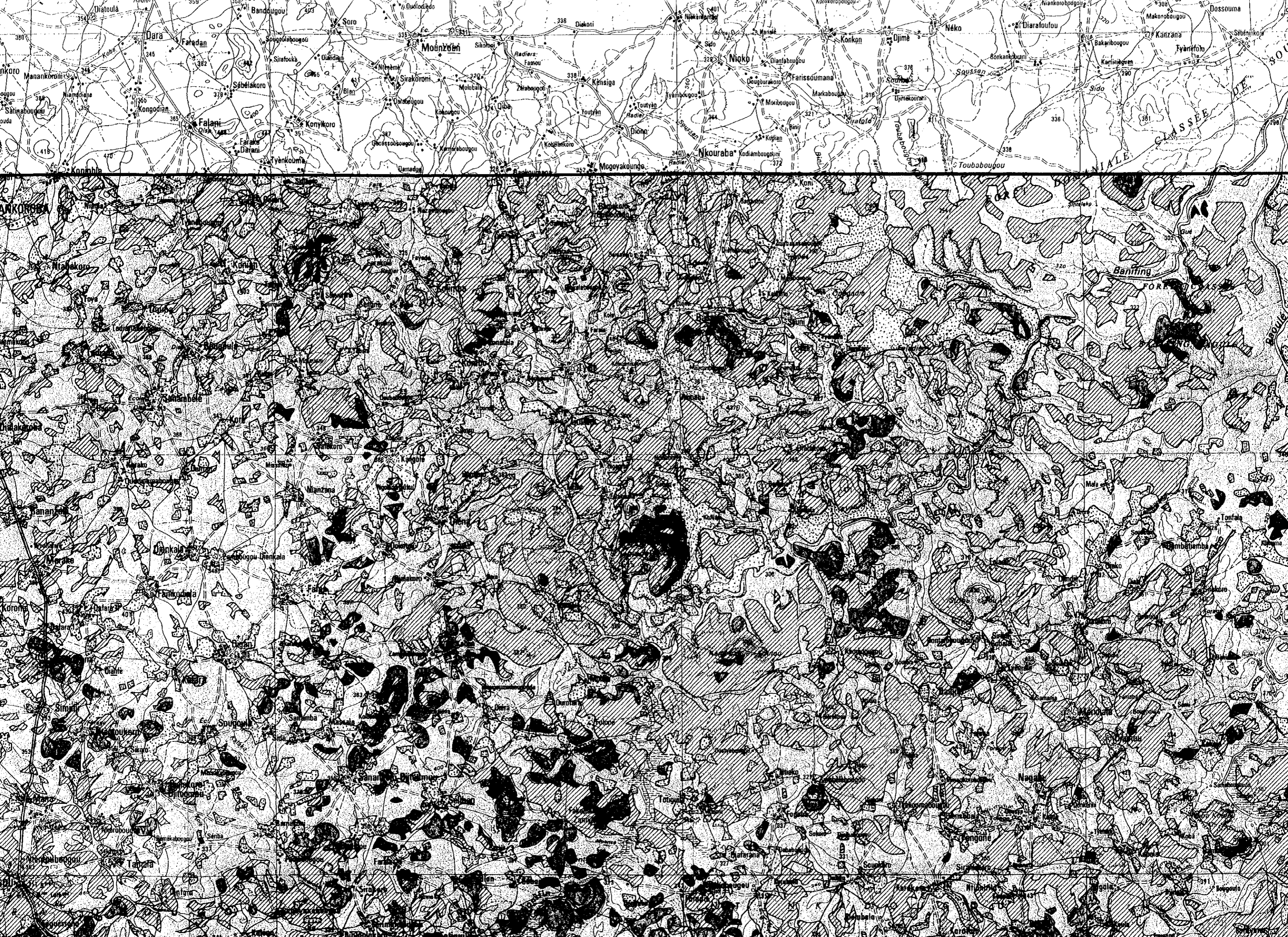




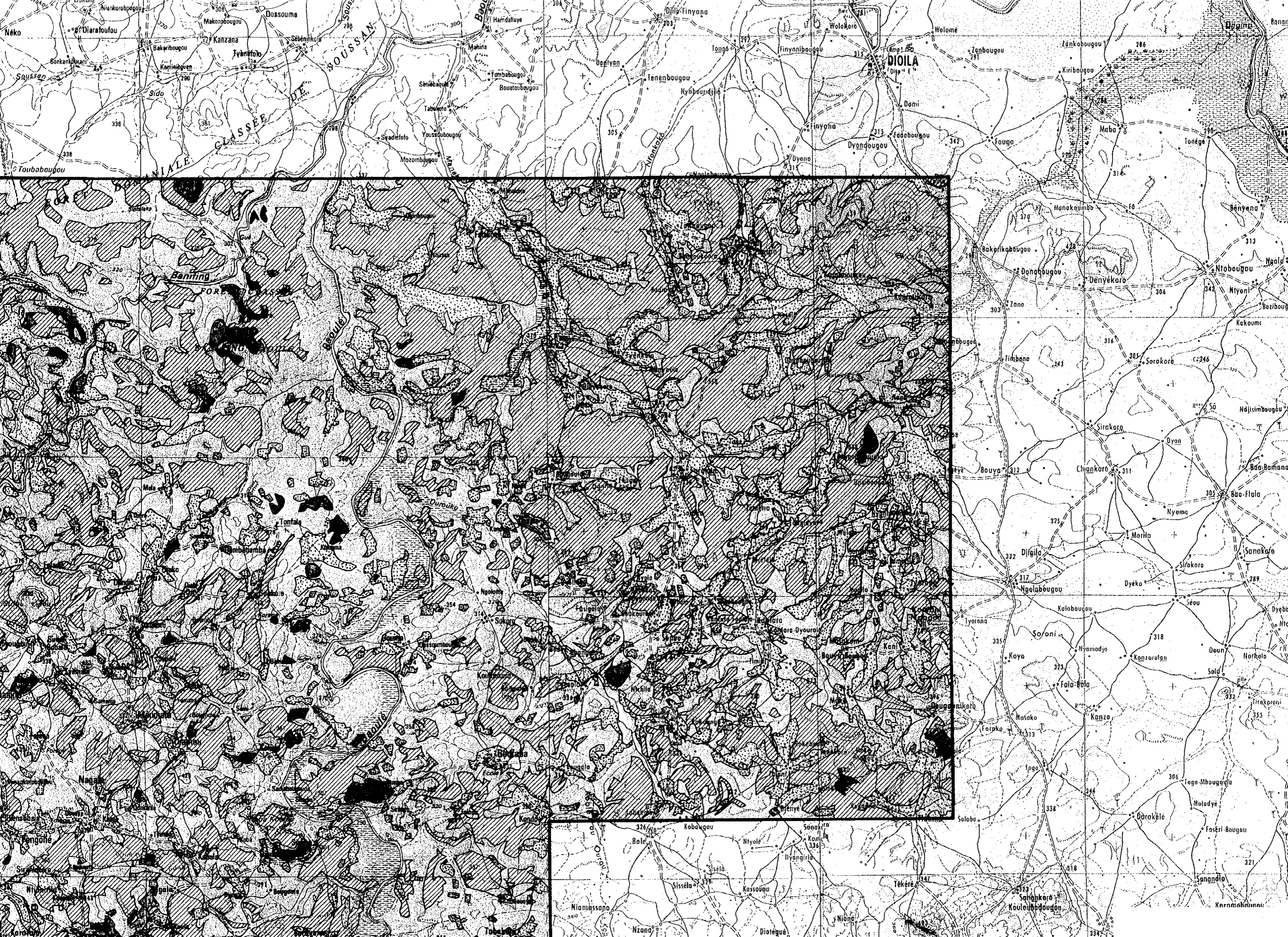




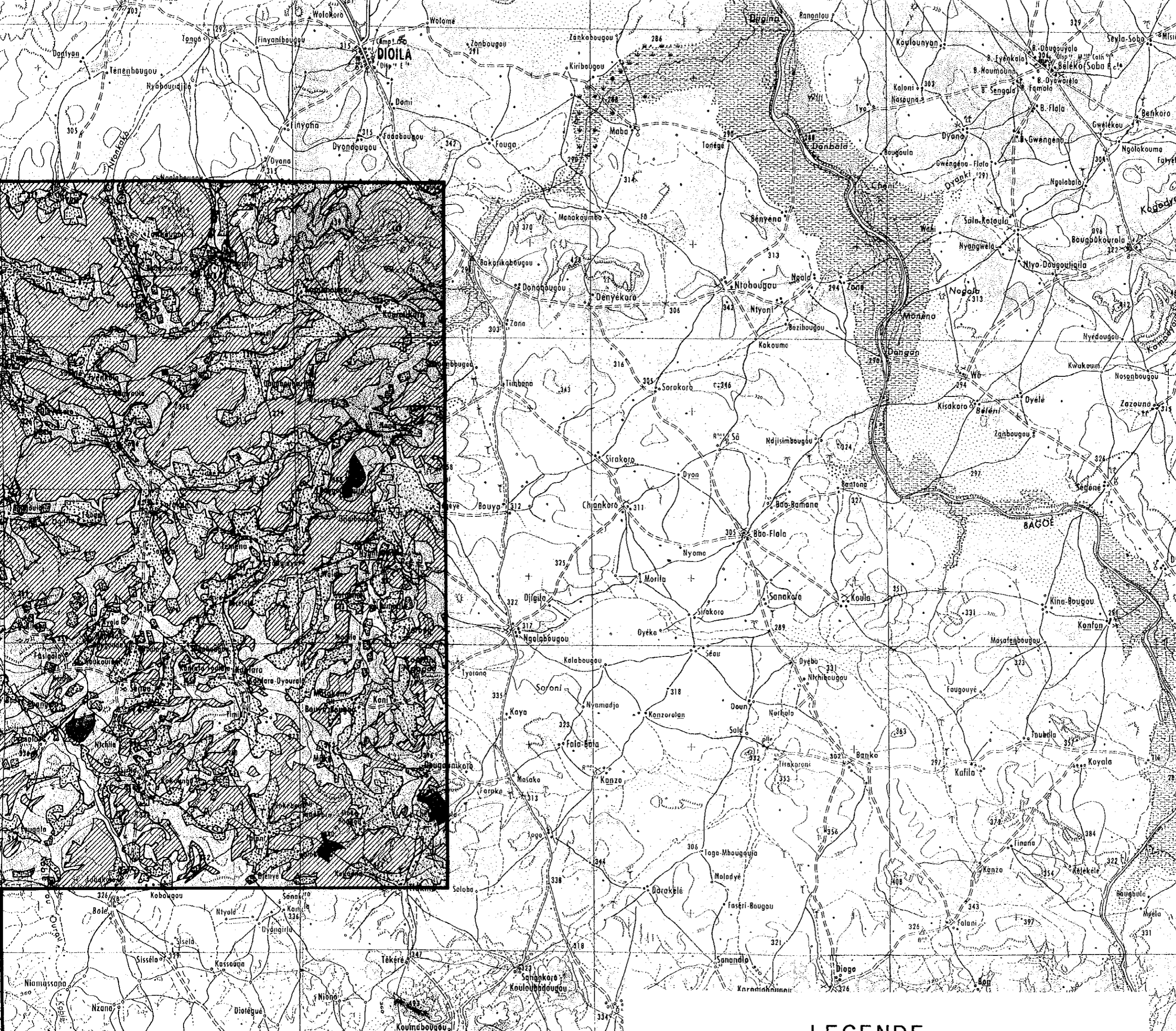








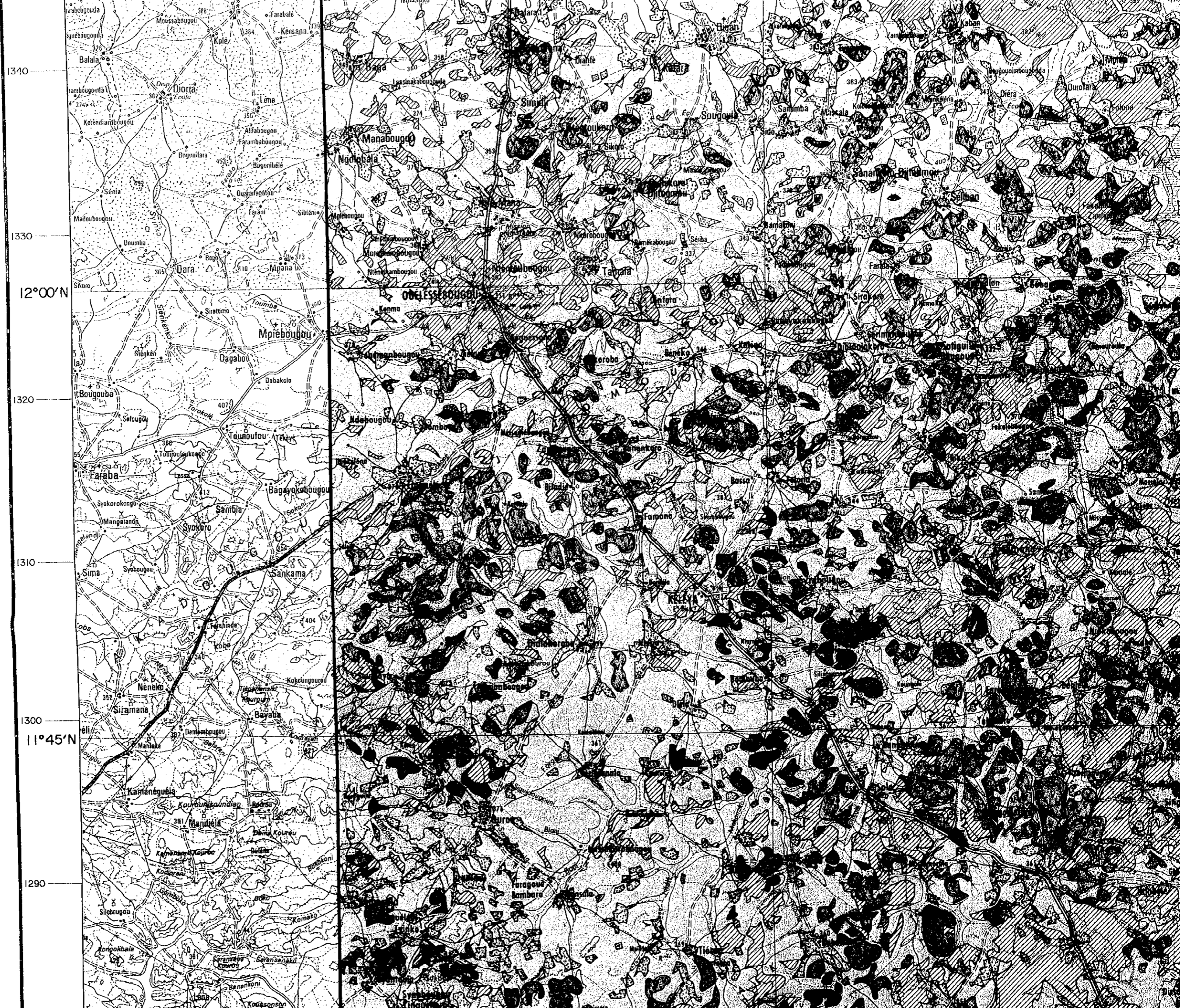




12° 30' N  
1380  
1370  
1360  
12° 15' N  
1350  
1340  
1330  
12° 00' N

LEGENDE

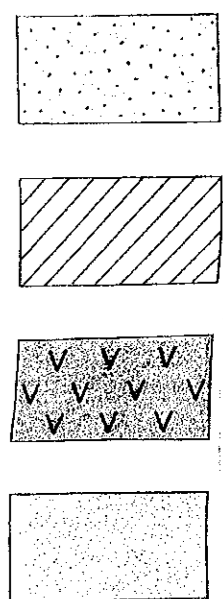
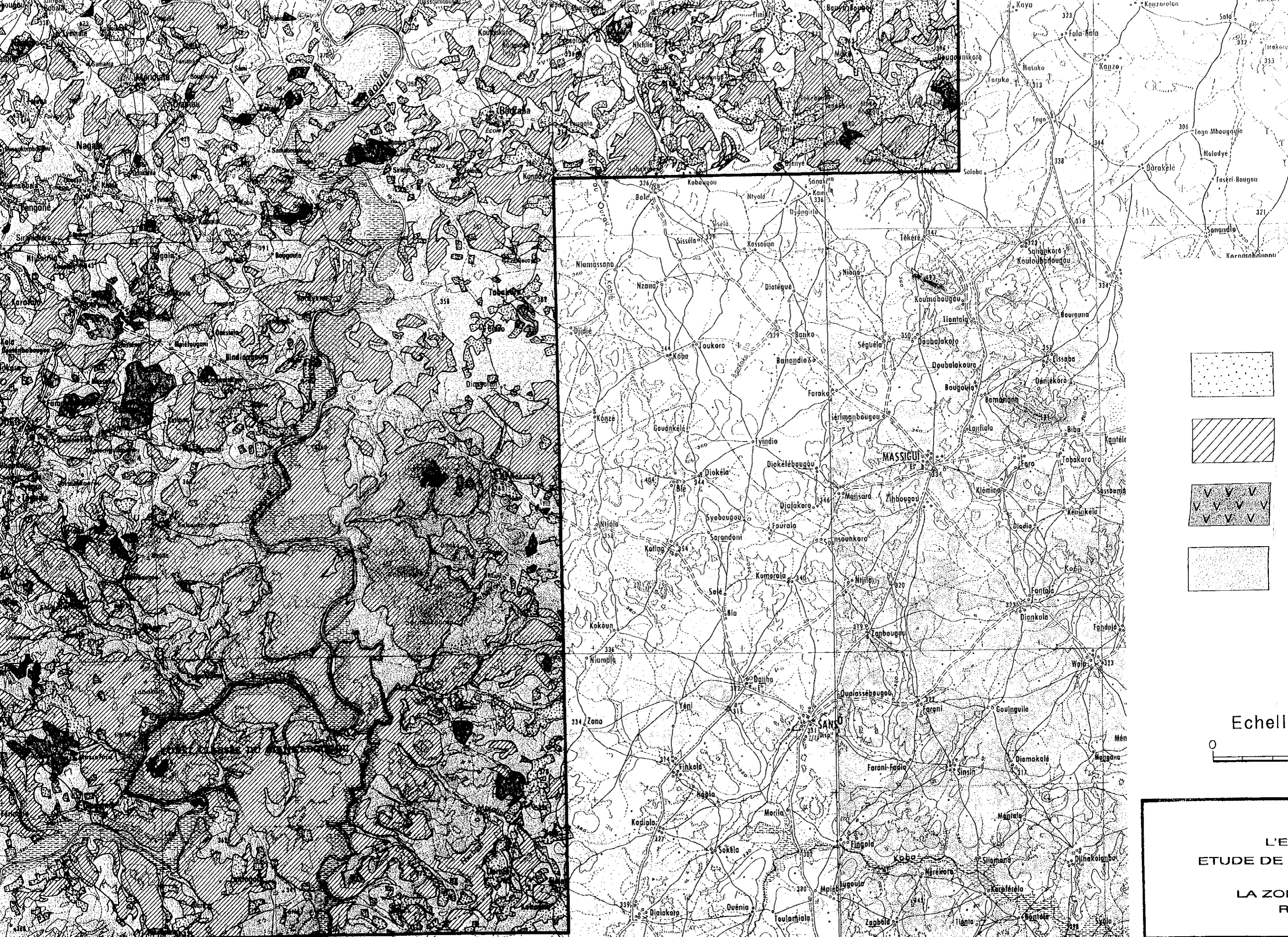








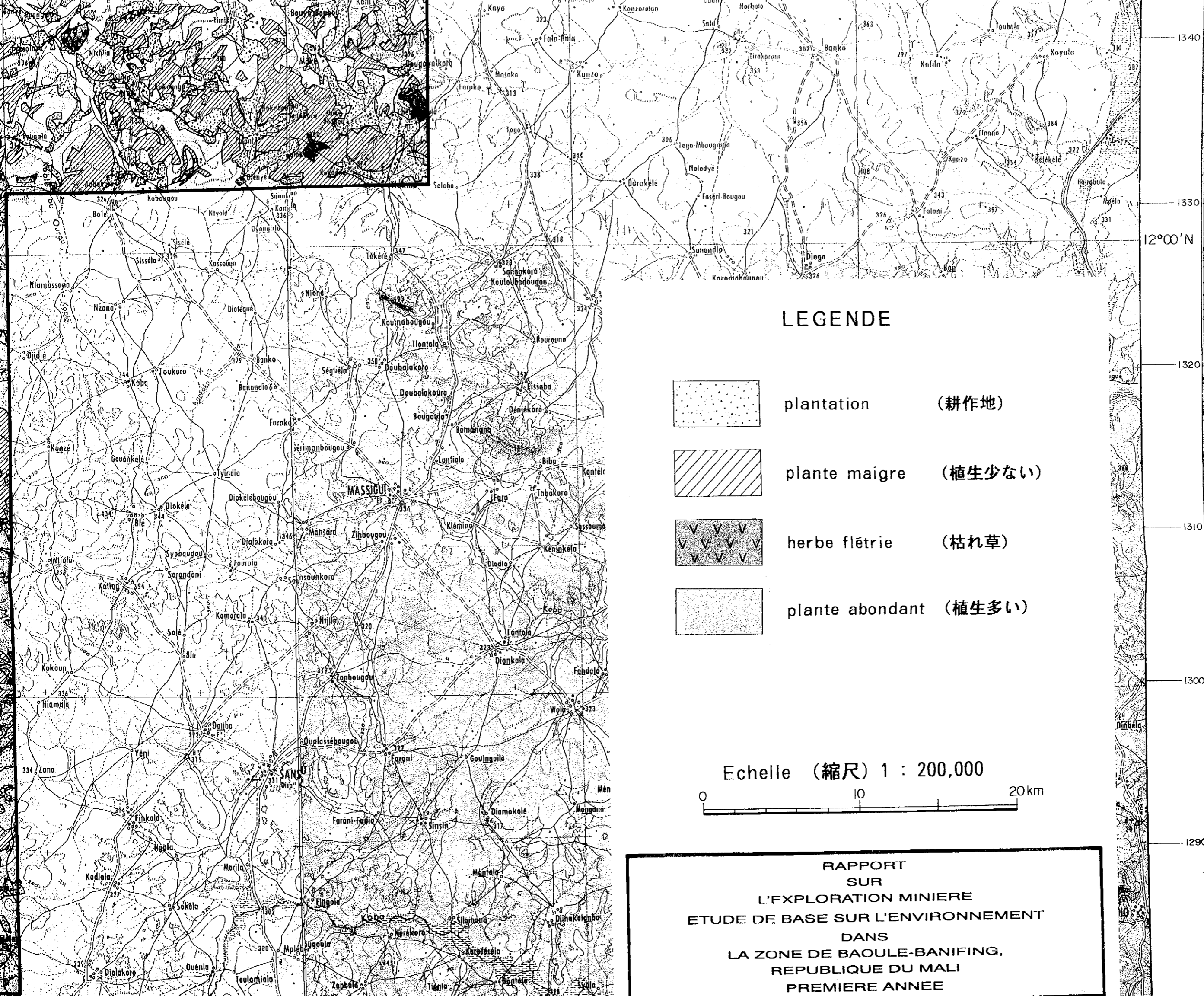




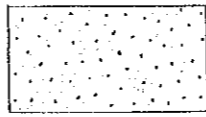
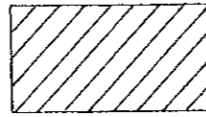
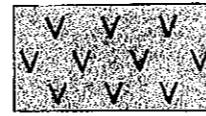
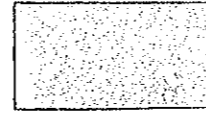
Echelle  
0

L'ETUDE DE  
LA ZONE

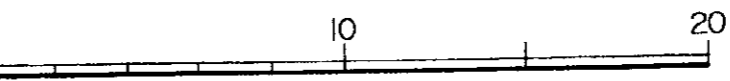




**LEGENDE**

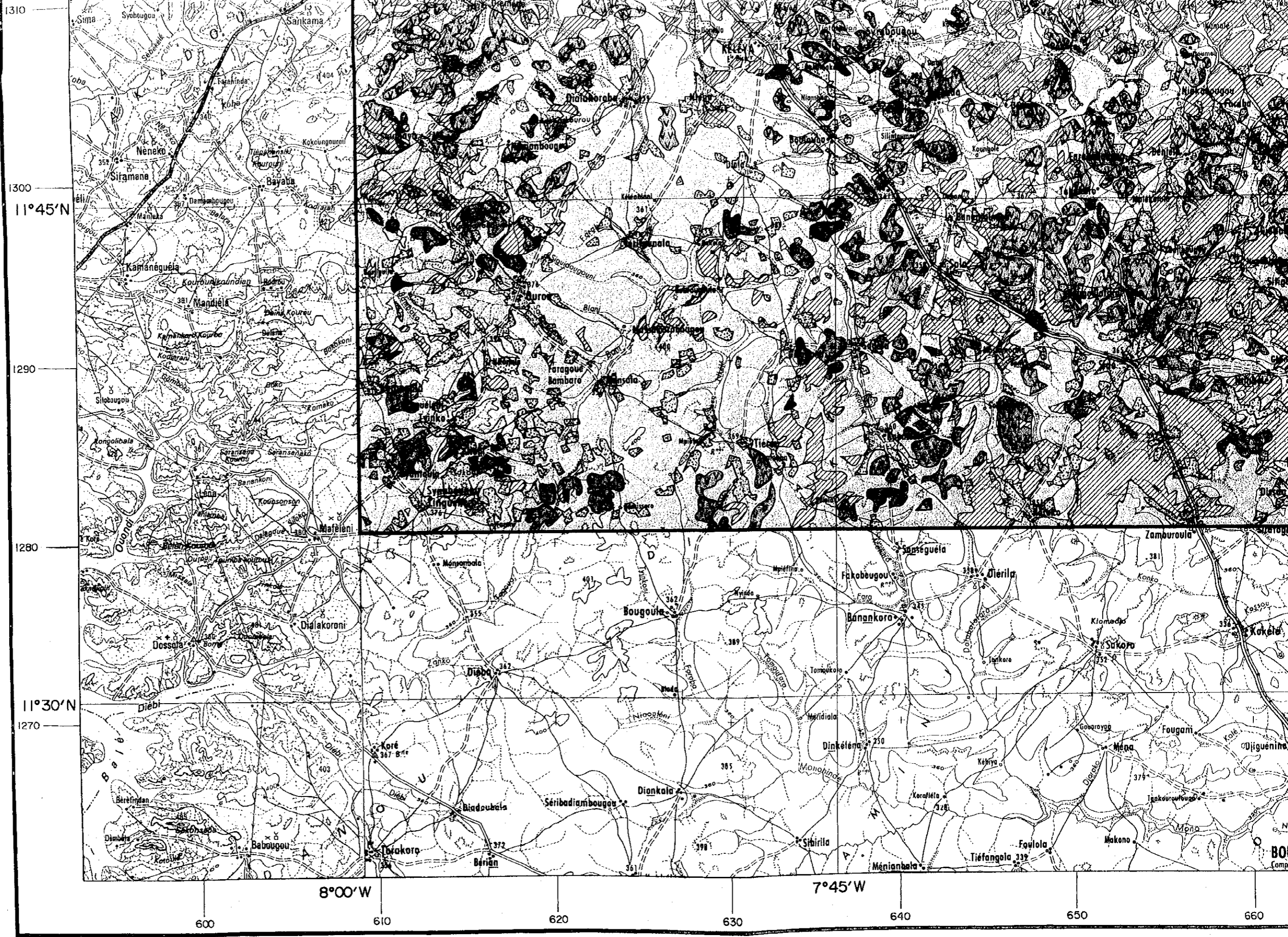
- 
 plantation (耕作地)
- 
 plante maigre (植生少ない)
- 
 herbe flêtrie (枯れ草)
- 
 plante abondant (植生多い)

Echelle (縮尺) 1 : 200,000

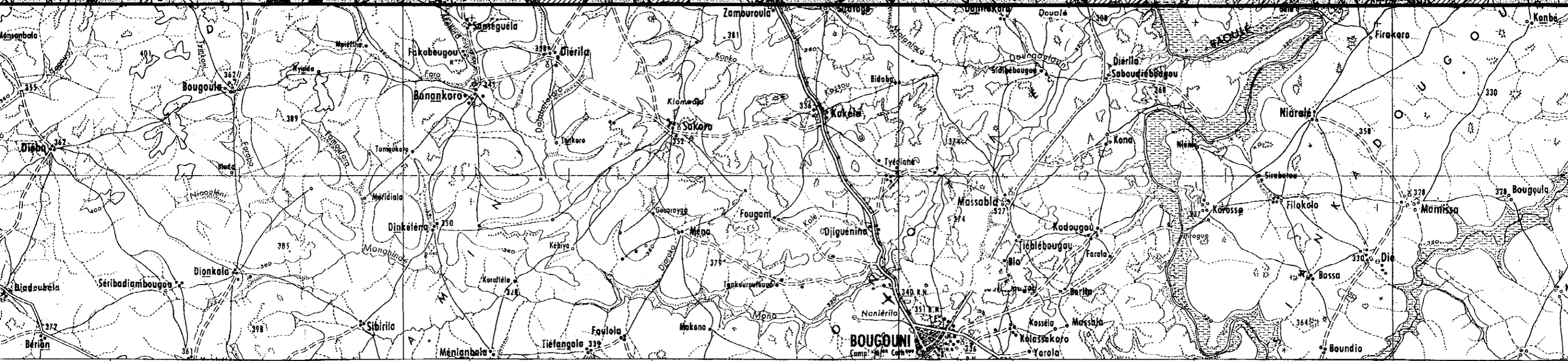
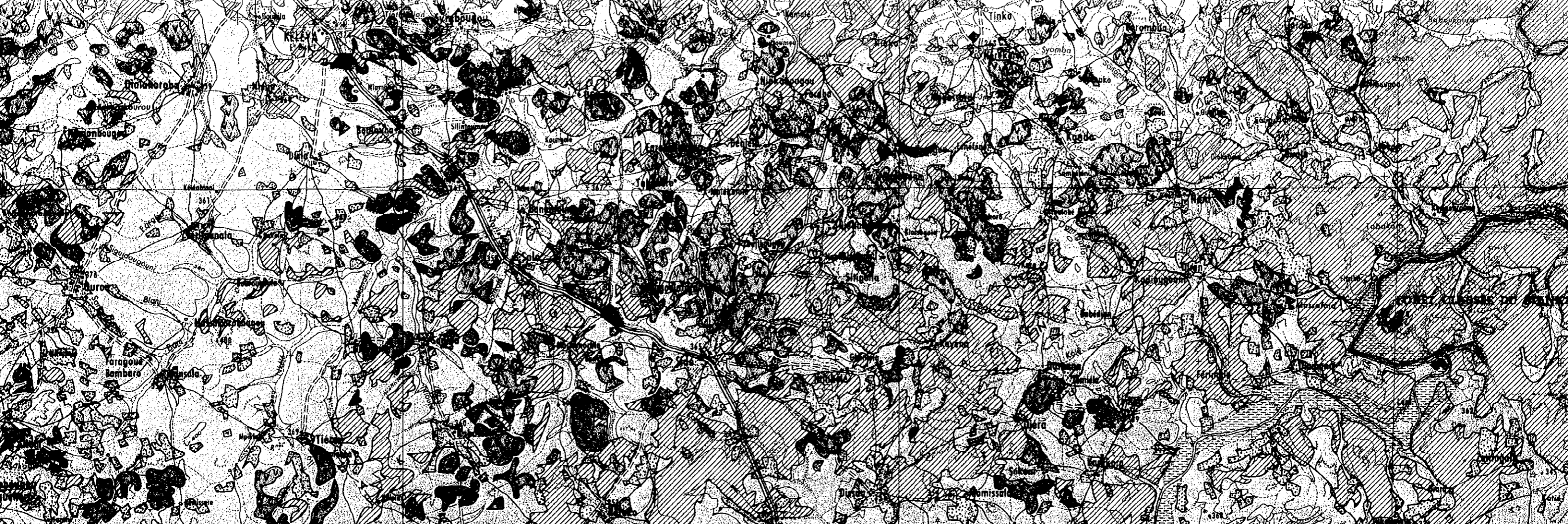


**RAPPORT  
 SUR  
 L'EXPLORATION MINIERE  
 ETUDE DE BASE SUR L'ENVIRONNEMENT  
 DANS  
 LA ZONE DE BAIOULE-BANIFING,  
 REPUBLIQUE DU MALI  
 PREMIERE ANNEE**









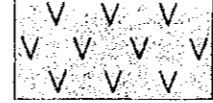
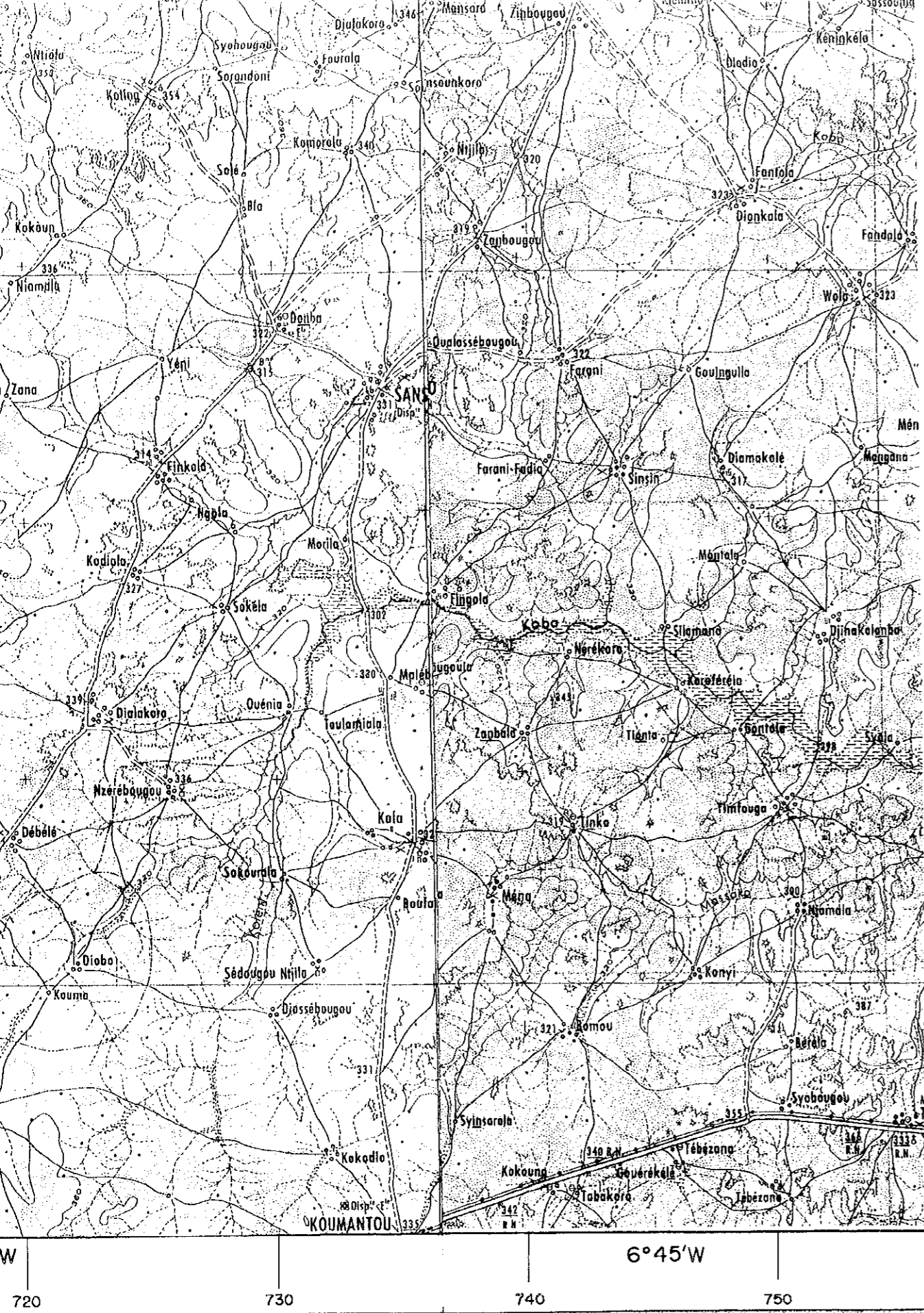
620 630 640 650 660 670 680 690 700

7°45'W 7°30'W 7°15'W

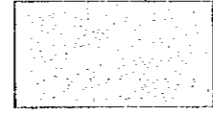






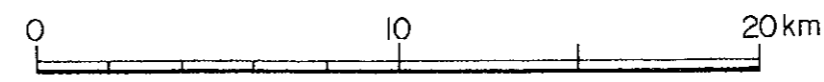


herbe flêtrie (枯れ草)



plante abondant (植生多い)

Echelle (縮尺) 1 : 200,000



RAPPORT  
 SUR  
 L'EXPLORATION MINIERE  
 ETUDE DE BASE SUR L'ENVIRONNEMENT  
 DANS  
 LA ZONE DE BAOULE-BANIFING,  
 REPUBLIQUE DU MALI  
 PREMIERE ANNEE

---

**Carte 1 (別添図 1)**

---

**Classification de flore**  
**(植物相区分)**

---

L'AGENCE JAPONAISE POUR LA COOPERATION INTERNATIONALE  
 L'AGENCE JAPONAISE MINIERE DES METAUX

---

**MARS 2001**

